



42A126E0302 24 ROBB

010

This file contains work performed by Cincinnati-Porcupine  
Mines Ltd. on claim:

P.50546	Hole #C.P.6;	August, 1964
	C.P.7;	September, 1964
	C.P.8;	March, 1966

NOTE: This file contains large location plan for holes:

- C.P.3
- C.P.-6, 7, 8 (this report)
- C.P. - 9, 10, ~~11~~
- C.P.-~~17~~18 (Report #27)
- C.P.- 19 (Report #31)
- C.P.- 21 (Report #33)

P. 50546

DIAMOND DRILL HOLE RECORD, DDH No. C-2-6PROPERTY Stankovits-Proprietary "B" grid

CLAIM

SHEET No. 1LATITUDE S - 20 NBEARING Collar 2-57 deg. N 200°-53 deg. NSTARTED August 30, 1964DEPARTURE 1 - 90WDIP. Collar 50 deg, 200°-50 deg., 400°-48 deg.COMPLETED Sept. 4, 1964ELEVATION Collar 945' above sea level

HORIZ. \_\_\_\_\_ VERT. \_\_\_\_\_

DEPTH 598.0DRILLED BY Continental Diamond Drilling

DEPTH - FEET	FORMATION	SAMPLE NO.	FROM	TO	WIDTH	VALUES				ECONOMIC GEOLOGY MINERALIZATION
0 - 145'	Casing	862	200.8	203.7	2.9					80% grey quartz silicification 7%
	0-30 cord, 3.0 - 140. clay, 140-145 casing in rock									fine pyrite & pyrrhotite disseminated through rock.
145.0-197.2	Andesite-fine greenish-gray with white flecks, a few pillow rims, strongly epid- dolized only minor pyrite.	863	215.4	216.8	1.4					White quartz at centre grades into the wallrock as grey silicified ande- site, minor pyrite.
197.2-198.5	Quartz-diorite dyke- about 7% fine disseminated pyrite.									
198.5-221.8	Andesite- a few very narrow bands of included chert and silicified andesite. about 5% pyrite throughout as disseminated cubes- minor pyrrhotite.									
221.8-322.5	Fine to medium grained gabbro with sharp contacts at 45 deg. to core.									
322.5-323.0	Fine grained Andesite									
323.0-598.0	Gabbro, Medium to coarse grained contains (very few) pyrite cubes chiefly Sphalerite and sphalerite, magnetite is rare. Fine grained contact phases, 323, 353, 581-598.									

ENGINEER: J. Steers

REPORT # 11

DIAMOND DRILL HOLE RECORD, DDH No C.P. 77

PROPERTY Continental Petroleum "B" grid

CLAIM P-50546

SHEET No. 1

LATITUDE 11 00 S

BEARING Collar N-57 deg E.

STARTED September 8, 1966

DEPARTURE 2 00 W

DIP. Collar - 47 deg.

COMPLETED

ELEVATION 984' above sea level

HORIZ. \_\_\_\_\_ VERT. \_\_\_\_\_

DEPTH 1005'

DRILLED BY Continental Diamond Drilling

DEPTH - FEET	FORMATION	SAMPLE NO.	FROM	TO	WIDTH	VALUES		ECONOMIC GEOLOGY MINERALIZATION
0-202	Casing							
202-205	Amphibole - fig. schistose, med.-dk, green chlorit, carbonated-schistosity parallel to core axis.							
205-208	Lost core							
208-266	As above - very greenish tale along foliation planes - foliation distorted and broken by micro-fractures 10% carbonate 224 - foliation 10% core axis 249 - " 35% core axis 225 - 250 20 - 30% carbonate rock bleached - "salt & pepper" an. carb.							
266-266	Lost core							
253-255	Lost core							
256.5-258.5	lost core							

ENGINEER: *[Signature]*

# DIAMOND DRILL HOLE RECORD, DDH No CR-17

PROPERTY \_\_\_\_\_

CLAIM \_\_\_\_\_

 SHEET No. 2

LATITUDE \_\_\_\_\_

BEARING \_\_\_\_\_

STARTED \_\_\_\_\_

DEPARTURE \_\_\_\_\_

DIP. \_\_\_\_\_

COMPLETED \_\_\_\_\_

ELEVATION \_\_\_\_\_

HORIZ. \_\_\_\_\_

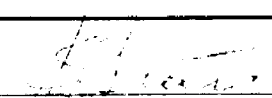
VERT. \_\_\_\_\_

DEPTH \_\_\_\_\_

DRILLED BY \_\_\_\_\_

DEPTH - FEET	FORMATION	SAMPLE NO.	FROM	TO	WIDTH	VALUES		ECONOMIC GEOLOGY MINERALIZATION
	256 2" Qts. vein-cut by calcite stringer (Barren)							
<del>264-278</del>	264. dk green chloritic, foliation poor to absent-considerably carbonitized.							
	263 - foliation 30 deg. core.							
	278-300 Foliation poorly defined numerous qts. & qtz carb. stringers.							264-278 Light disseminated pyrite
	300 increase in carbonate some qtz. stringers offset by foliation -30deg. core.							
	Increasing carbonate-bleaching core-							
	11 foliation - a few scattered pyrite veins							

ENGINEER: \_\_\_\_\_



# DIAMOND DRILL HOLE RECORD, DDH No

C.P. **77**

PROPERTY \_\_\_\_\_

CLAIM \_\_\_\_\_

SHEET No. **3**

LATITUDE \_\_\_\_\_

BEARING \_\_\_\_\_

STARTED \_\_\_\_\_

DEPARTURE \_\_\_\_\_

DIP. \_\_\_\_\_

COMPLETED \_\_\_\_\_

ELEVATION \_\_\_\_\_

HORIZ. \_\_\_\_\_

VERT. \_\_\_\_\_

DEPTH \_\_\_\_\_

DRILLED BY \_\_\_\_\_

DEPTH - FEET	FORMATION	SAMPLE NO.	FROM	TO	WIDTH	VALUES	ECONOMIC GEOLOGY MINERALIZATION
	325-330 Salt & Pepper texture due to carbonate alteration minor diss. py.						
338-346	1" qtz. running in core. Wall rock altered chloritized silicified, no mineralization						
346-355	Grey green, carbonatized, chloritic, schistose andesite. 30deg. core axis.						
355-411.5	Dark greenish chloritic foliated and carbonitized and epidotized.						
	355-359 distorted calcite arygdules.						
	365-375 alteration extreme foliation highly developed and distorted.						
	andesite mainly epidote & chlorite and carbonate foliation 30 deg. vcore						

ENGINEER: \_\_\_\_\_

# DIAMOND DRILL HOLE RECORD, DDH No C.P. # 7

PROPERTY \_\_\_\_\_ CLAIM \_\_\_\_\_ SHEET No. 4

LATITUDE \_\_\_\_\_ BEARING \_\_\_\_\_ STARTED \_\_\_\_\_

DEPARTURE \_\_\_\_\_ DIP. \_\_\_\_\_ COMPLETED \_\_\_\_\_

ELEVATION \_\_\_\_\_ HORIZ. \_\_\_\_\_ VERT. \_\_\_\_\_ DEPTH \_\_\_\_\_

DRILLED BY \_\_\_\_\_

DEPTH - FEET	FORMATION	SAMPLE NO.	FROM	TO	WIDTH	VALUES	ECONOMIC GEOLOGY MINERALIZATION
375	Foliation not pronounced alteration- chlorite, epidote disseminated carbonate badly broken, irregular chlorite patches and waxy green epidote given mottled fragmental appearance spotty silicification.						380.5 2" silicified andesite with spotty pyrite.
411.5-473	Argydules at contact. grey green well foliated silicified andesite with dark green chloritic bands. Minor epidotization numerous calcite veinlets " foliation & at 90 deg. foliation. Bealched by carbonate & quartz. stretched calcite argydules. Scattered pyrite mineralization with quartz veins						475.5 1/2" quartz vein with scattered chalcoc and hematite.

ENGINEER: \_\_\_\_\_



# DIAMOND DRILL HOLE RECORD, DDH No C.P. # 7

PROPERTY \_\_\_\_\_

CLAIM \_\_\_\_\_

 SHEET No. 6

LATITUDE \_\_\_\_\_

BEARING \_\_\_\_\_

STARTED \_\_\_\_\_

DEPARTURE \_\_\_\_\_

DIP. \_\_\_\_\_

COMPLETED \_\_\_\_\_

ELEVATION \_\_\_\_\_

HORIZ. \_\_\_\_\_

VERT. \_\_\_\_\_

DEPTH \_\_\_\_\_

DRILLED BY \_\_\_\_\_

DEPTH - FEET	FORMATION	SAMPLE NO.	FROM	TO	WIDTH	VALUES	ECONOMIC GEOLOGY MINERALIZATION
	Light pyrite scattered throughout heavily carbonitized.						
	Deformed calcite <del>575-588</del> amygdules						
	757-580 Very light disseminated pyrite						
600-605	Deformed calcite amygdules						563-571 Light disseminated pyrite with 1/8" stringers pyrite 1% mineralized. 588 trace CP
605-635	Carbonitized foliated Foliation 35 degree core, very minor disseminated pyrite.						
635-660	More massive vague foliation very light pyrite chloritic carbonitized.						
	661-664 heavily carbonitized.						
660-684	amygdoloidal vague foliation						
684-698	More massive chloritized, carbonitized foliage 30 degree core.						

ENGINEER: \_\_\_\_\_



# DIAMOND DRILL HOLE RECORD, DDH No C.P. 17

PROPERTY \_\_\_\_\_ CLAIM \_\_\_\_\_ SHEET No. **7**

LATITUDE \_\_\_\_\_ BEARING \_\_\_\_\_ STARTED \_\_\_\_\_

DEPARTURE \_\_\_\_\_ DIP. \_\_\_\_\_ COMPLETED \_\_\_\_\_

ELEVATION \_\_\_\_\_ HORIZ. \_\_\_\_\_ VERT. \_\_\_\_\_ DEPTH \_\_\_\_\_

DRILLED BY \_\_\_\_\_

DEPTH - FEET	FORMATION	SAMPLE NO.	FROM	TO	WIDTH	VALUES	ECONOMIC GEOLOGY MINERALIZATION
<del>698-1003</del>	argilloloidal-vaguely foliated chloritic carbonitized.						
	692- pyrite stringers rapid variation						
	"vices" quartz, epidote hematite						
	Foliation increasing well developed						
	30 deg. core carbonate alteration intense						
	quartz carbonate epidote possible						
	pillow rim?						

ENGINEER: \_\_\_\_\_

# DIAMOND DRILL HOLE RECORD, DDH No

S.P. # 8

PROPERTY Cincinnati-Percupine, Robb Township

CLAIM P. 50541

SHEET No. 1

LATITUDE 10-N

BEARING Grid North

STARTED March 15, 1966

DEPARTURE 12+00-W

DIP. - 50 @ collar, 61 @ 200, 56 @ 400, 52 @ 500

COMPLETED March 22, 1966

ELEVATION \_\_\_\_\_

HORIZ. \_\_\_\_\_

VERT. \_\_\_\_\_

DEPTH 595

DRILLED BY Continental Diamond Drilling

DEPTH - FEET	FORMATION	SAMPLE NO.	FROM	TO	WIDTH	VALUES	ECONOMIC GEOLOGY MINERALIZATION
0 - 156	Casing						
156 - 170	Andesite, fine grained, chloritic medium green, chilled near contact, contact 47 deg core.						
170 - 181	Hydro-dacite, fine-grained, dark grey green, vaguely foliated, light disseminated pyrite near upper contact - appear porphyritic because of spotty quartz-carbonate alteration.						
181 - 258.6	Andesite, contact very sharp 38 deg core As above, with incipient carbonate alteration, light disseminated pyrite and foliation 25 deg core						
215.5 - 218.5	} coarse, quartz calcite } veins with minor pyrite and chloritized andesite fragments.						
225 - 239							

ENGINEER

*E. J. [Signature]*

# DIAMOND DRILL HOLE RECORD, DDH No

C.P. # 8

PROPERTY \_\_\_\_\_

CLAIM \_\_\_\_\_

SHEET No. **2**

LATITUDE \_\_\_\_\_

BEARING \_\_\_\_\_

STARTED \_\_\_\_\_

DEPARTURE \_\_\_\_\_

DIP. \_\_\_\_\_

COMPLETED \_\_\_\_\_

ELEVATION \_\_\_\_\_

HORIZ. \_\_\_\_\_ VERT. \_\_\_\_\_

DEPTH \_\_\_\_\_

DRILLED BY \_\_\_\_\_

DEPTH - FEET	FORMATION	SAMPLE NO.	FROM	TO	WIDTH	VALUES	ECONOMIC GEOLOGY MINERALIZATION
258.6-285.5	Rhyo-dacite, very fine grained matrix with a few minute quartz eyes, dark grey green, with numerous flesh to buff coloured rhyolitic inclusions, incipient carbonitization.						
285.5-292	Andesite - contact carbonitized, sheared 40 deg core.						
292 - 336	Rhyolite as 258 - 285, from 310 no inclusions lower contact approx. 46 deg. core						
336 - 381	Andesite, chloritic, lightly carbonitized, foliation vague contact, sheared, carbonitized 40 deg core.						
381 - 463	Rhyolite as before						
	434-438, 440 - 441, 449-451, irregular quartz carbonate veins.						
	444 - inclusions or fragments in rhyolite matrix.						

*[Handwritten Signature]*

# DIAMOND DRILL HOLE RECORD, DDH No

C.P. # 8

PROPERTY \_\_\_\_\_

CLAM \_\_\_\_\_

SHEET No. 3

LATITUDE \_\_\_\_\_

BEARING \_\_\_\_\_

STARTED \_\_\_\_\_

DEPARTURE \_\_\_\_\_

DIP \_\_\_\_\_

COMPLETED \_\_\_\_\_

ELEVATION \_\_\_\_\_

HORIZ. \_\_\_\_\_

VERT. \_\_\_\_\_

DEPTH \_\_\_\_\_

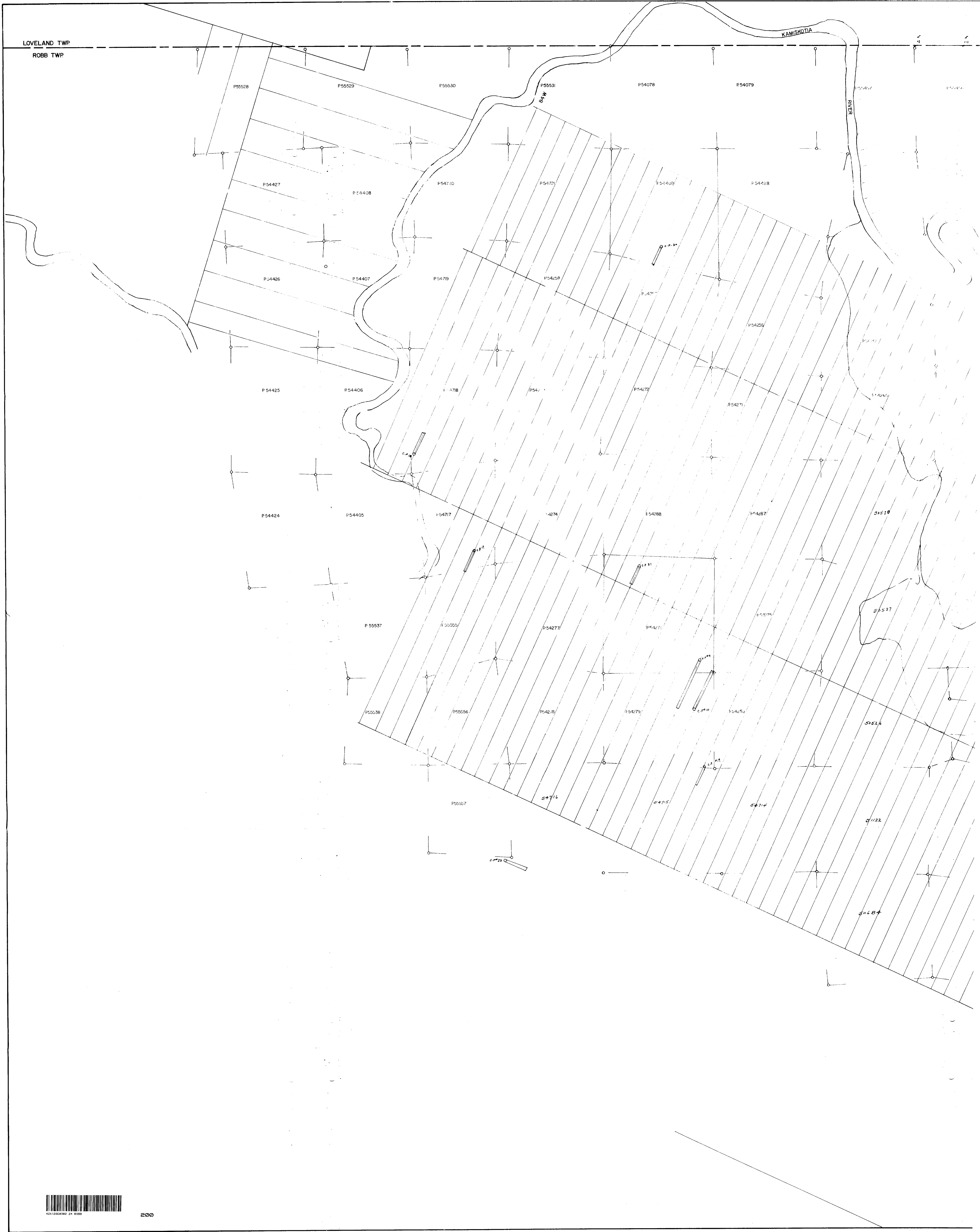
DRILLED BY \_\_\_\_\_

DEPTH - FEET	FORMATION	SAMPLE NO.	FROM	TO	WASH	GRAV	GAL	ZINC	SILICA	ECONOMIC GEOLOGY MINERALIZATION
463 - 595	Rhyolitic to intermediate tuffs, strongly foliated, heavily carbonitized, vague suggestions of bedding, light (2 - 3%) pyrite and pyrrhotite mineralization with trace chalcopyrite. Foliation average 46 deg. core. 492 - tuffaceous, fragmental nature more apparent, considerably carbonitized, sericitic foliation planes, 1-2% clear to blue white quartz phenocrysts irregular pyrite and pyrrhotite distribution trace chalcopyrite	3501	502	507	70	70	70	Nil	70	3-4% pyrite and pyrrhotite in acid tuff
	Vague bedding 40-50deg. core. from 560 - 595 mineralization very light approx. 1%.	3504	528	533	70	70	70	Nil	70	8% pyrite and pyrrhotite in acid tuff
	595 END									

ENGINEER: *[Signature]*

LOVELAND TWP  
ROBB TWP

KAMISKOTIA RIVER



**CRONE J.E.M. PROFILE**

+5  
0  
-5  
-10  
-15

480 C.P.S.  
1800 C.P.S.

**S-57°-W** →

**SURFACE**

**CP-6**  
ELEV. 948

SAND

CLAY

CONDUCTORS

100'

ANDESITE PILLOW LAVA (EPIDOTIZED)

QUARTZ DIORITE DYKE

ANDESITE PILLOW LAVA (EPIDOTIZED)  
(5% DISS. PYRITE)

200'

GABBRO (FINE TO MED. GRAINED)

ANDESITE

GABBRO (FINE GRAIN, CONTACT PHASE)

300'

GABBRO (COARSE GRAINED)



210

400'

*Robb #24*

**CINCINNATI-PORCUPINE MINES LTD.**  
**D.D. HOLE CP-6**  
**ON "B" DETAIL GRID**  
**ROBB TWP**  
**SCALE 1"=40'**

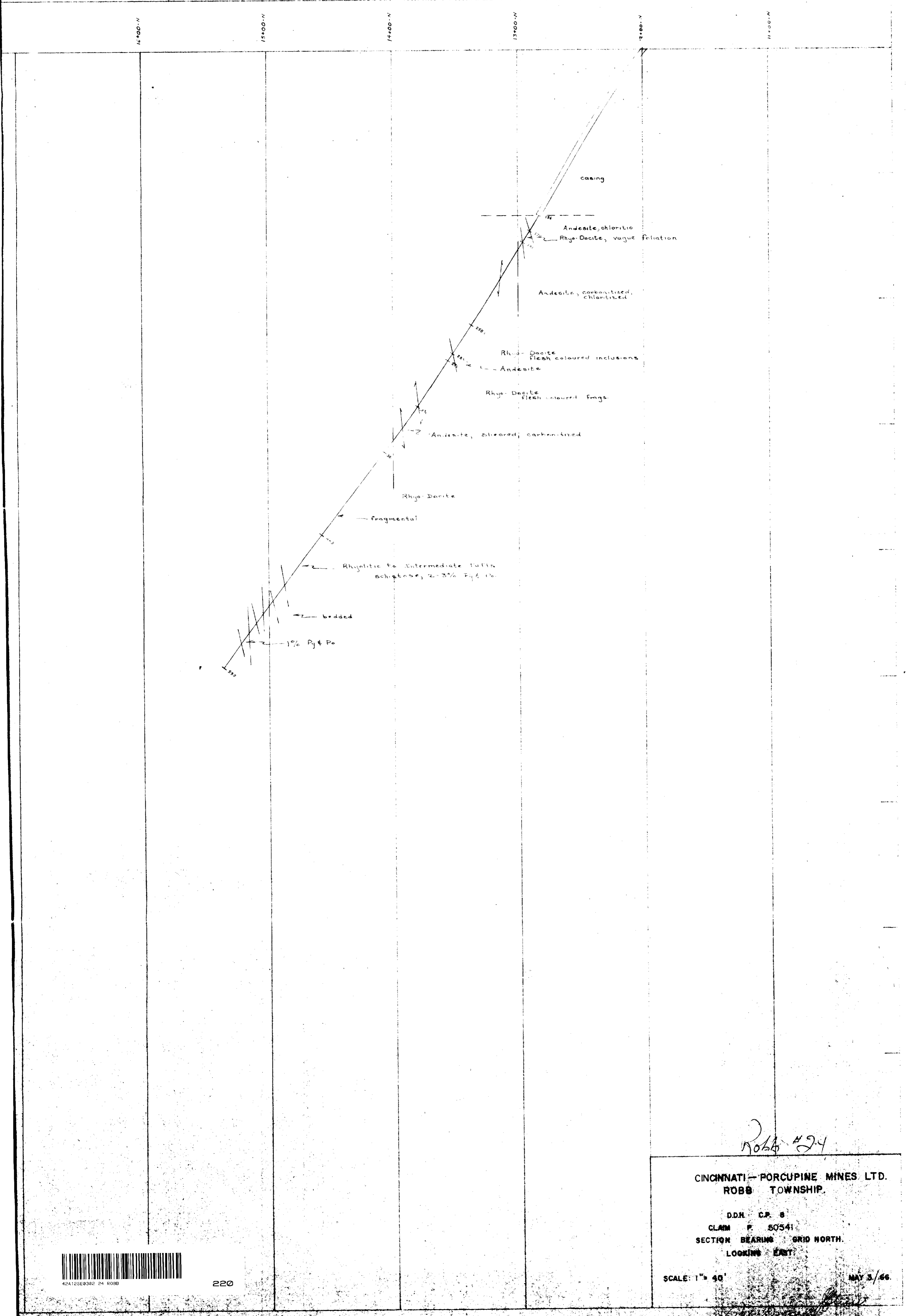
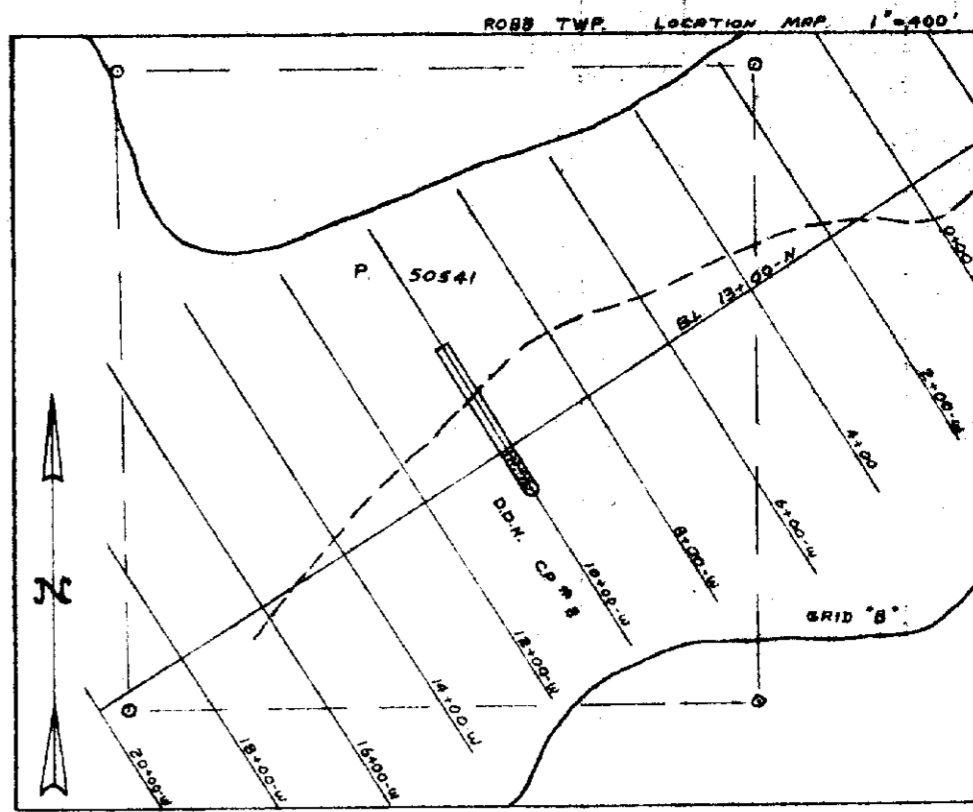
GABBRO (FINE GR. CONTACT PH.)  
598.0

SEPT. 3, 1964

*14x17"*

*[Signature]*

1/2



Robb #24

CINCINNATI-PORCUPINE MINES LTD.  
ROBB TOWNSHIP.

D.D.N. C.P. 8  
CLAIM F. 50541  
SECTION BEARING GRID NORTH.  
LOOKING EAST.

SCALE: 1" = 40'

MAY 3/66



4241268392 24 ROBB

CRONE J.E.M. PROFILE

480 C.P.S.  
1800 C.P.S.

+ 5

0

-5

N-57°-E

SURFACE

ELEV. 984. C.P. 7

-47°

Carbonized, chloritic  
andesite

Dark green, chloritic  
andesite

Distorted calcite  
amygdules

alteration extreme  
foliation distorted  
amygdular @ contact

Silicified andesite

diabase

Amygdular andesite: chloritic,  
bleached, silicified, epidotized  
carbonized

Carbonized, chloritic andesite  
amygdular in part

1005

Robb #24

CINCINNATI-PORCUPINE MINES LTD.  
D.D. HOLE CP-7  
ON "B" DETAIL GRID  
ROBB TWP.  
SCALE 1"=40'



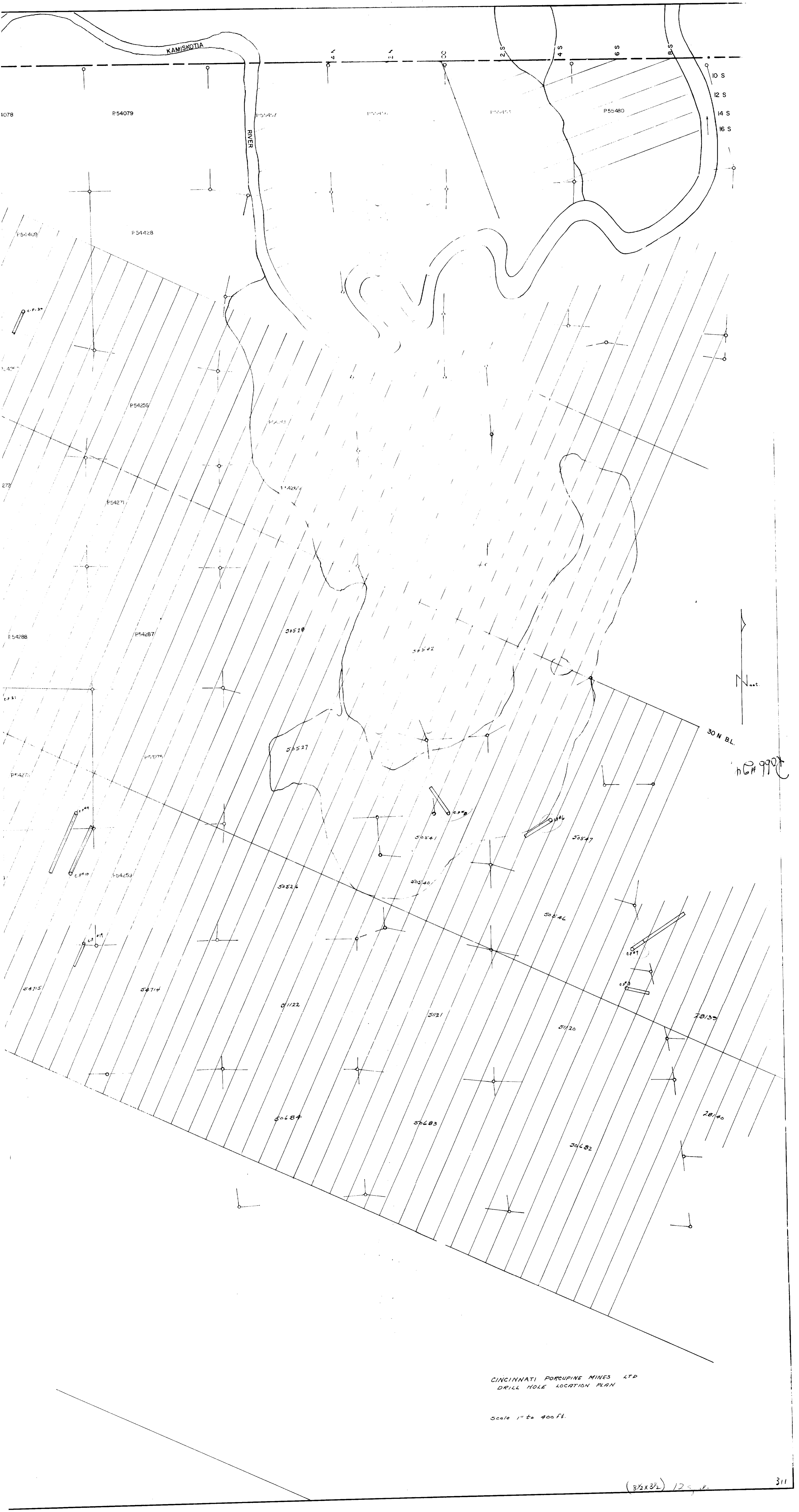
424122E0382 24 0000

230

(212) 459 ft.

3/11





CINCINNATI PORCUPINE MINES LTD  
 DRILL HOLE LOCATION PLAN

Scale 1" to 400 ft.