



42A12SE0314 35 ROBB

010

ORT NO. 35

*This file contains work performed by Duvan Copper Co. Ltd.  
on Claims:*

P. 50684

Hole # 1

September, 1962

P. 51122

Hole # 2

Sept-Oct., 1962

# DIAMOND DRILL RECORD

PROPERTY DUVAN COPPER COMPANY LIMITED HOLE NO. 1

SHEET NUMBER 1 SECTION FROM \_\_\_\_\_ TO \_\_\_\_\_ STARTED Sept 20, 1962  
 LATITUDE 900. N P 50684 DATUM \_\_\_\_\_ COMPLETED Sept 25, 1962  
 DEPARTURE LING 276 BEARING North ULTIMATE DEPTH 511'  
 ELEVATION \_\_\_\_\_ DIP -50 PROPOSED DEPTH \_\_\_\_\_

DEPTH FEET	FORMATION	SAMPLE NO.	WIDTH OF SAMPLE	GOLD \$	SLUDGE GOLD \$		
0	117	Casing					
117	162	Diorite					
162	169	Andesite fine grained					
169	175	Lampophyre Oyke - black fine grained					
175	185.5	Andesite (fragmentals)					
185.5	188	Lampophyre Dyke					
188	198	Andesite					
198	199.5	Lampophyre Dyke					
199.5	264	Andesite 223 - 224 - a few cubes of pyrite					
264	287	Diorite 264 - 265 - some disseminated pyrite					
287	318	Andesite					
318	351	Diorite - coarse					
351	375	Andesite - chloritic, sheared, numerous carbonated ribbons; stringers of pyrite along shearing					
375	420	Andesite - massive					
420	463	Dioritic Greenstone? 439 - 440 barren quartz					
463	511	Diabase					
END OF HOLE		511 feet					

N.M.P., TORONTO-STOCK FORM NO. 801 REV. 12/51

DRILLED BY ..... SIGNED .....

# DIAMOND DRILL RECORD

PROPERTY DUVAN COPPER COMPANY LIMITED HOLE NO. 2

SHEET NUMBER 1 SECTION FROM \_\_\_\_\_ TO \_\_\_\_\_ STARTED Sept 28, 1962  
 LATITUDE \_\_\_\_\_ DATUM \_\_\_\_\_ COMPLETED Oct 4, 1962  
 DEPARTURE 1750. N P51122 BEARING North ULTIMATE DEPTH 673'  
 ELEVATION LINE 27.6 DIP -50 degrees PROPOSED DEPTH \_\_\_\_\_

DEPTH FEET	FORMATION	SAMPLE NO.	WIDTH OF SAMPLE	GOLD g	SLUDGE GOLD g		
0	185	Casing					
185	218	Greenstone - grey tuffaceous					
218	232	Greenstone - green chloritic, sheared at 45° fine seams of pyrite					
232	291	Greenstone - grey massive					
291	305	Greenstone - green chloritic					
305	336.5	Greenstone - grey tuffaceous 332-335 qtz & fine pyrite	51	330-332	2.0	tr	
336.5	340	Greenstone - chloritic					
340	343	Greenstone - silicified mineralized, fine pyrite	52	341.5-343.5	2.0	nil	
		359 - 360 quartz barren					
343	372	Greenstone - chloritic					
372	631	Greenstone - tuffaceous - 45° to core					
631	673	Greenstone					
END OF HOLE		673 feet					

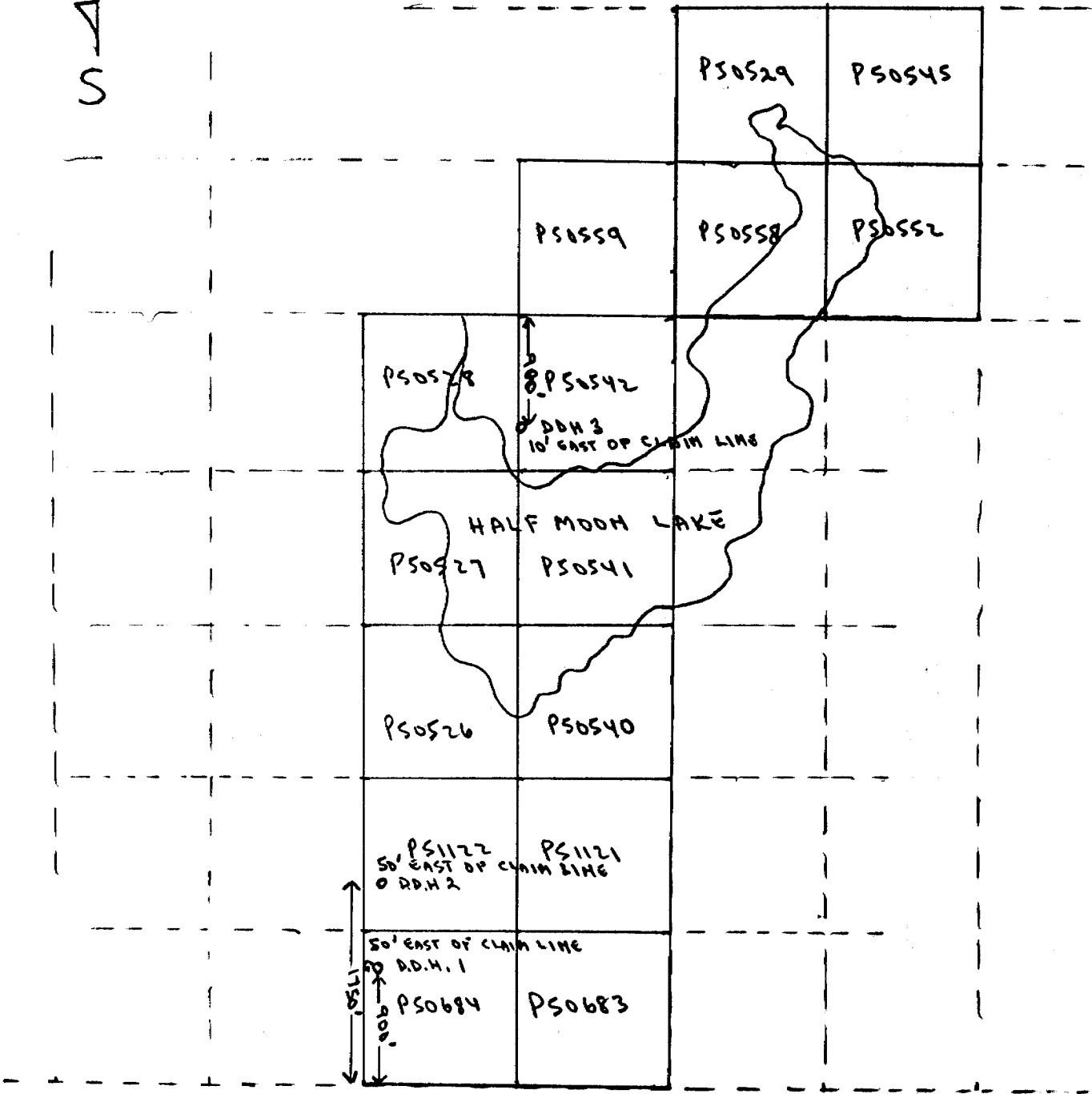
DRILLED BY .....

SIGNED .....



# ROBB TWP

SCALE 1" = 20 CHAINS



Robb