

Diamond Drilling



42A12SE0416 33 GODFREY

010

Township of GODFREY

Report NO 33

Work performed by: Texasgulf Limited

Claim NO	Hole NO	Footage	Date	Note
P 410464	G-51-2	(839.0'	May/75	(1)

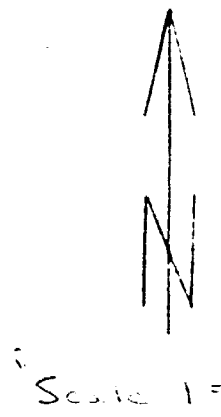
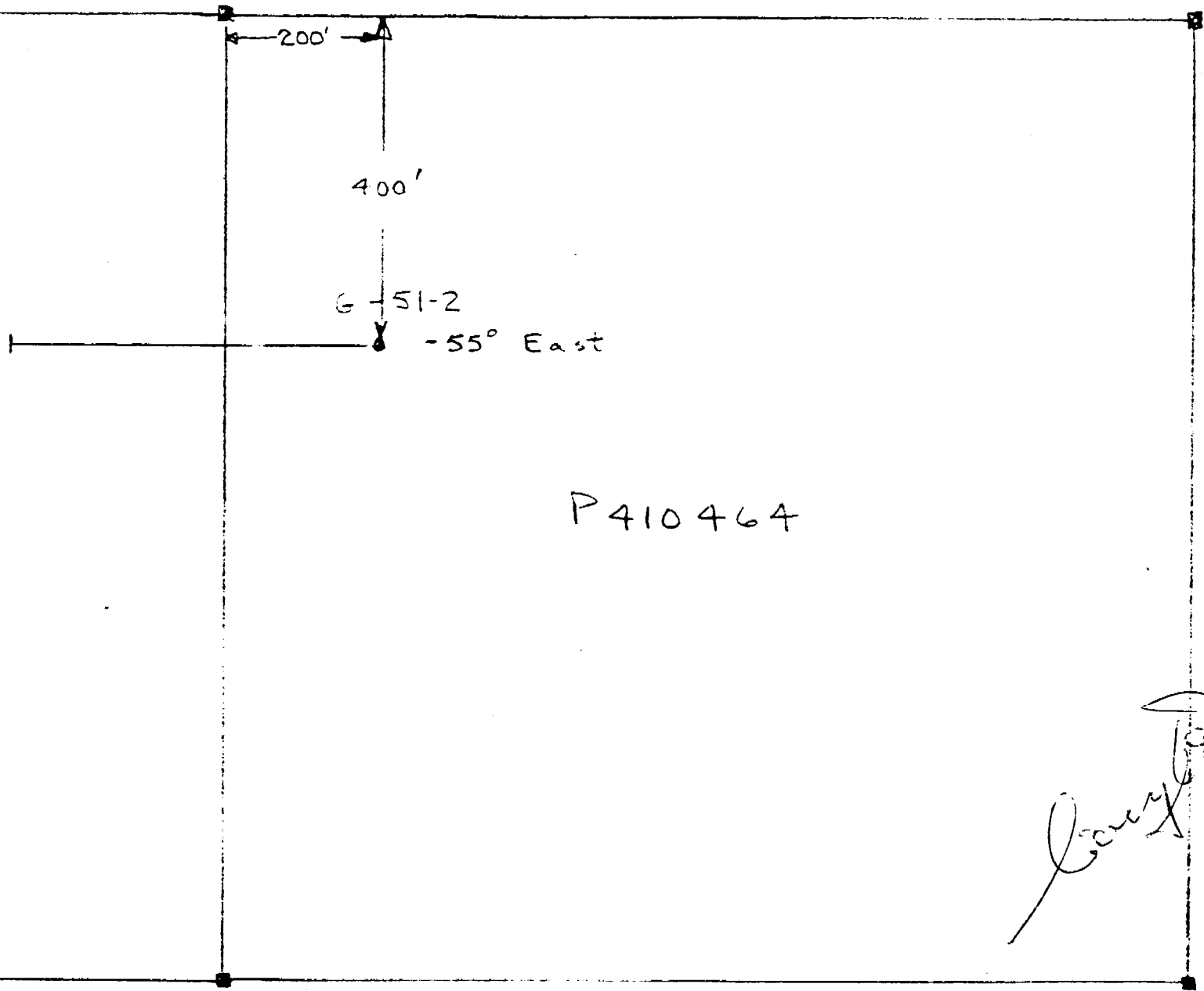
Notes:

(1) #127-77

GODFREY TWP.
#127-77
TEXASGULF

P410424

P410464



Gene [Signature]

Location Map for Diamond Drill Hole
G-51-2 - Godfrey Twp (Lot 11 S $\frac{1}{4}$, Con V)

D. D. HOLE No. G-51-2

Loc. 4+00S Dip collar: -55 Bearing collar: Due East Length: 839
 2+00E 300': -59 : Collar el.:
 600' -58 : Bottom el.:

Drilled by: Bradley Bros Core size: AQ Begun: May 16/75 Ended: May 23/75 Logged by J.J. Watkins

Samples	Footage drilled			Geology
	From	To	Len.	
xxxx	0	20	20	CASING
	20	33.5	13.5	ANDESITE: medium greyish green, fine grained, fairly uniform in composition and texture, weakly chloritic from 22 to 23'; moderately silicified @ 30° to C.A., from 24 to 245; silicified with 10% diss. cubic pyrite, at 27'; 2" of finely banded cherty (?) material at 45° to C.A. Sulphid: 2% diss. cubic pyrite. Lower contact indistinct.
	33.3	39	5.5	RHYOLITE TUFFWACKE: medium grey, fine grained, finely granular, sercitic rhyolite fragments with hazy contacts towards upper contacts, weakly chloritic. Sulphide: minor diss. cubic pyrite. Lower contact broken.
	39	104.3	65.3	ANDESITE: medium to dark greyish green, fine grained, volcanoclastic with light green, subround fragments up to 1" from 44 to 48 (flow top breccia), amygdaloidal section throughout elongated at various angles to C.A., weakly chloritic becoming moderately chloritic with depth. Sulphide: minor diss. cubic pyrite throughout, @ 85': 1" silicified zone with 1% blotchy chalcopyrite. Lower contact broken.
	104.3	111.5	7.2	TUFFWACKE: medium grey, fine grained, finely granular well developed quartz eyes throughout, occasional sunround hazy fragment up to 1/2", irregular quartz stringers throughout. Sulphide: 1% diss. cubic pyrite with trace of chalcopyrite. Lower contact gradational

D. D. Hole No. G-51-2

Handwritten signature

Loc. : Dip collar : Bearing collar : Length :
 : : : Collar el. :
 : : : Bottom el. :
 Drilled by: Core size: Begun: Ended: Logged by:

Samples	Footage drilled			Geology
	From	To	Len.	
xxxx	111.5	140	28.5	ANDESITE: medium grey green, fine grained, uniform, amygdaloidal throughout, weakly chloritic, from 125 to 127, fine rod shaped carbonate crystal, from 131 to 133.5; 30% irregular creamy white quartz stringers. Sulphides: from 111.5 to 131 - 2% Py as cubic dissemination and amygdule fillings. from 131 to 137; 2% Cp as irregular blotches associated silicification. Lower contact gradational.
	140	142	2	TUFFWACKE: as before, quartz eyes throughout, minor disseminated Py. Lower contact gradational.
	142	571	429	ANDESITE: medium becoming light grey green with depth, fine grained, amygdaloidal throughout, weakly chloritic near upper contact becoming lighter and carbonated to 257 feet; possible pillow rims throughout, from 251.5 to 253.5; diorite dike, fine grained with sharp contacts @ 60° to C.A. from 257 to 315; moderately chloritic; from 315 to 571; medium grey green, weakly chloritic with fine carbonate laths and effervescent throughout. Sulphide: at 156.2 - 2" of 3% Cp in amygdules. from 163 to 175: 3% as 2% Sph and 1% Cp as fine diss. Sph. and blotchy Cp. from 175 to 240: minor finely diss. Sph and Cp from 240 to 310: 3% as 2% Sph and 1% Cp finely diss., from 270 to 280; - 2% Cp as blotches. from 310 to 360: <1% fine diss. Sph. and Cp.

[Handwritten signature]

D. D. HOLE No.

Loc.

Dip collar :

Bearing collar :

Length :

Collar el. :

Bottom el. :

Drilled by:

Core size:

Begun:

Ended:

Logged by:

Samples	Footage drilled			Geology
	From	To	Len.	
xxxx				from 364 to 387: 5% as 1.5% Cp, 1% Sph and 2.5% Ph.
				from 503.5 to 524: 2% as 1% Cp and 1% Po as fine disseminations and as fine stringers at 20 to C.A; from 524 to 571: < 1% diss Cp and Po with minor Sph. Lost core: 499 to 500
	571	839	268	<u>RHYOLITE TUFF WITH LAPILLI TUFF SECTIONS:</u> medium grey, fine grained, lapilli tuff section with creamy white and yellowish green sericitic fragments up to 1 cm in a weakly chloritic matrix containing quartz eyes; from 571 to 574.5: appears graded, topping up the hole, 577.5 to 586 and 616 to 629: hazy fragments; from 629 to 696: becoming more massive, probably still fragmental, sericitic patches and irregular stringers developed throughout. from 696 to 639: fragment size increases to a coarse lapilli with possible more massive tuffaceous sections, weakly chloritic from 630 to 639; from 696 to 839: less sericitic, fragmental feature still evident, banding evident @ 50° to C.A., becoming weakly chloritic from 830 to 839. Sulphides: from 571 to 577: 1% diss. Cp and Po from 611 to 613: 1% diss. Cp. from 628 to 628.5: 5% diss. Cp. from 630 to 639: trace of fine diss. Cp.
		839		END OF HOLE

J. J. Waters

D. D. Hole No. G-51-2

Long