



42A12SE0418 2.1828 GODFREY

010

TEXASGULF CANADA LIMITED
REPORT ON GEOPHYSICAL WORK
IN
GODFREY TOWNSHIP

Geophysical surveys consisting of proton precession magnetometer and horizontal loop electromagnetic traverses were performed over this group of three (3) contiguous claims, located in northwestern Godfrey Township.

Claims P-410424 and P410646 were formerly patented claims P-27830 and P-27829 respectively, located in the south quarter of Lot 11 Concession V, claim P-410425 is in the NW $\frac{1}{4}$, S $\frac{1}{2}$, Lot 11, Concession V.

Access to the claim group is easiest by helicopter, landing on Steep Lake. Highway 576 passes within two miles to the northeast of the property.

PREVIOUS WORK:

Consolidated Brewis carried out an extensive exploration program on a large block of claims in the area in 1964.

Magnetic and electromagnetic surveys were carried out and twenty diamond drill holes were drilled. Of these, thirteen holes were drilled close to the north-south claim line dividing claims P410424 and P-410646 along a weakly mineralized zone. Hole number twelve, the best hole, intersected 0.89% Cu over twenty-five feet. However, hole number thirteen, drilled to intersect the mineralized zone one hundred feet below hole number twelve, cut only five feet of mineralization.

JUNE 1975
W.A. GASTEIGER

SURVEY RESULTS:

The present surveys were on east-west grid lines to best traverse the apparent north-south strike.

HORIZONTAL LOOP SURVEY

Since most of the claim group is either outcrop or under shallow overburden, only a 200 foot TX - RX coil separation was used in the horizontal loop survey.

No conductors were found. Any irregular in phase readings are due to coil misorientation, as the quadrature readings indicate no anomalous responses. As the zone drilled by Consolidated Brewis seems to pinch out fairly quickly with depth, wider coil separation would not be warranted.

MAGNETIC SURVEY

The magnetic survey defines a number of the geologic contacts that are evident in the outcrops.

The magnetic high running from about 6W on Line 12S to 3W on Line 12N corresponds to a diabase dike. The area of high magnetics covering most of claim P-410425 and the north-west corner of claim P-410424 is due to a gabbro intrusive. The low susceptibility rocks within the gabbro complex in the northwest corner of P 410425 are composed of felsic material and can be classified as quartz porphyry and quartz-feldspar porphyry.

The rest of the claim group is underlain by rocks of low magnetic susceptibility. These are andesites and rhyolites. The isolated mag highs along the south half of the baseline are due to concentrations of

pyrrhotite along the mineralized zone.

RECOMMENDATIONS:

The E.M. survey indicates no accumulations of massive sulphides and previous drilling indicates a shallow body of subeconomic concentrations of disseminated and stringer type sulphides. However, the area is encouraging and detailed mapping along with a thorough compilation of the previous drilling may indicate areas in which to try a few short diamond drill holes to test the mineralized zone and the reliability of previous results.

WAG/gc


W. A. Gasteiger

9.1290



Ministry of Natur

GEOPHYSICAL - GEOLOGIC TECHNICAL DATA



42A12SE0418 2.1828 GODFREY

900

TO BE ATTACHED AS AN APPENDIX TO TECHNICAL REPORT
FACTS SHOWN HERE NEED NOT BE REPEATED IN REPORT
TECHNICAL REPORT MUST CONTAIN INTERPRETATION, CONCLUSIONS ETC.

Type of Survey(s) Geophysical
Township or Area Godfrey Township
Claim Holder(s) Texasgulf Canada Limited
P.O. Box 175, Suite 5000, Commerce Court, Toronto
Survey Company As Above M5L 1E7
Author of Report W. A. Gasteiger
Address of Author P.O. Box 1140, Timmins, Ontario
Covering Dates of Survey July /74 to June /75
(linecutting to office)
Total Miles of Line Cut 5.5

MINING CLAIMS TRAVERSED
List numerically

Table with columns for prefix (P), number, and claim number. Entries include 410424, 410425, and 410464.

If space insufficient, attach list

SPECIAL PROVISIONS CREDITS REQUESTED
Geophysical
- Electromagnetic 20
- Magnetometer 40
- Radiometric dn
- Other
Geological
Geochemical

AIRBORNE CREDITS (Special provision credits do not apply to airborne surveys)

Magnetometer Electromagnetic Radiometric
(enter days per claim)

DATE: June 17/75 SIGNATURE: W. A. Gasteiger
Author of Report or Agent

Res. Geol. L.D. Qualifications 2.1798

Table with columns: File No., Type, Date, Claim Holder. Entry: 63.1298, mag & E.M., 1964, Consolidated Brevia Minerals Ltd.

TOTAL CLAIMS 3

GEOPHYSICAL TECHNICAL DATA

GROUND SURVEYS -- If more than one survey, specify data for each type of survey

E.M.: 248 E.M. 248
Number of Stations Mag: 451 Number of Readings Mag: 477
Station interval 100' (50' detail) Line spacing 200'
Profile scale E.M. 1" = 20%
Contour interval Mag. 100 gamma contours

MAGNETIC

Instrument Geometrics G 816, Proton Precession, Total Field
Accuracy - Scale constant - 1 gamma
Diurnal correction method Magnetic field strength established along base line by
Base Station check-in interval (hours) reading 200' loops with 100' stations. Base line
values subsequently used to correct survey data.
Base Station location and value At base line on Line 0+00, 59896 gammas

ELECTROMAGNETIC

Instrument Geonics EM-17
Coil configuration Horizontal Loop
Coil separation + 200'
Accuracy - 2%
Method: [] Fixed transmitter [] Shoot back [x] In line [] Parallel line
Frequency 1600 Hz
(specify V.L.F. station)

Parameters measured In-phase and Quadrature components at Secondary Field as percent
of Transmitted Field.

GRAVITY

Instrument
Scale constant
Corrections made
Base station value and location
Elevation accuracy

INDUCED POLARIZATION RESISTIVITY

Instrument
Method [] Time Domain [] Frequency Domain
Parameters - On time Frequency
- Off time Range
- Delay time
- Integration time
Power
Electrode array
Electrode spacing
Type of electrode

Jamieson Twp. (M.288)

Gap Radar Sta.
Dept. of National Defence
Withdrawn from Staking
Sec.34(D) of Mining Act. File 169051

THE TOWNSHIP
OF

2.1828

GODFREY

DISTRICT OF
COCHRANE

PORCUPINE
MINING DIVISION

SCALE: 1-INCH = 40 CHAINS

LEGEND

- PATENTED LAND ● or (P)
- CROWN LAND SALE C.S.
- LEASES □ or (L)
- LOCATED LAND Loc.
- LICENSE OF OCCUPATION L.O.
- MINING RIGHTS ONLY M.R.O.
- SURFACE RIGHTS ONLY S.R.O.
- ROADS
- IMPROVED ROADS
- KING'S HIGHWAYS
- RAILWAYS
- POWER LINES
- MARSH OR MUSKOGEE
- MINES
- CANCELLED C.
- PATENTED S.R.O.

NOTES

400' surface rights reservation along the shores of all lakes and rivers.

Flooding rights on either side of the Mattagami to H.E.P.C.

This township lies within the Municipality of CITY of TIMMINS.

- MINING LANDS -
DATE OF ISSUE
JUN 24 1975
MINISTRY
OF NATURAL RESOURCES

PLAN NO. M.284

ONTARIO
MINISTRY OF NATURAL RESOURCES
SURVEYS AND MAPPING BRANCH

Turnbull Twp. (M.316)

VI

V

IV

III

II

I

Coronation

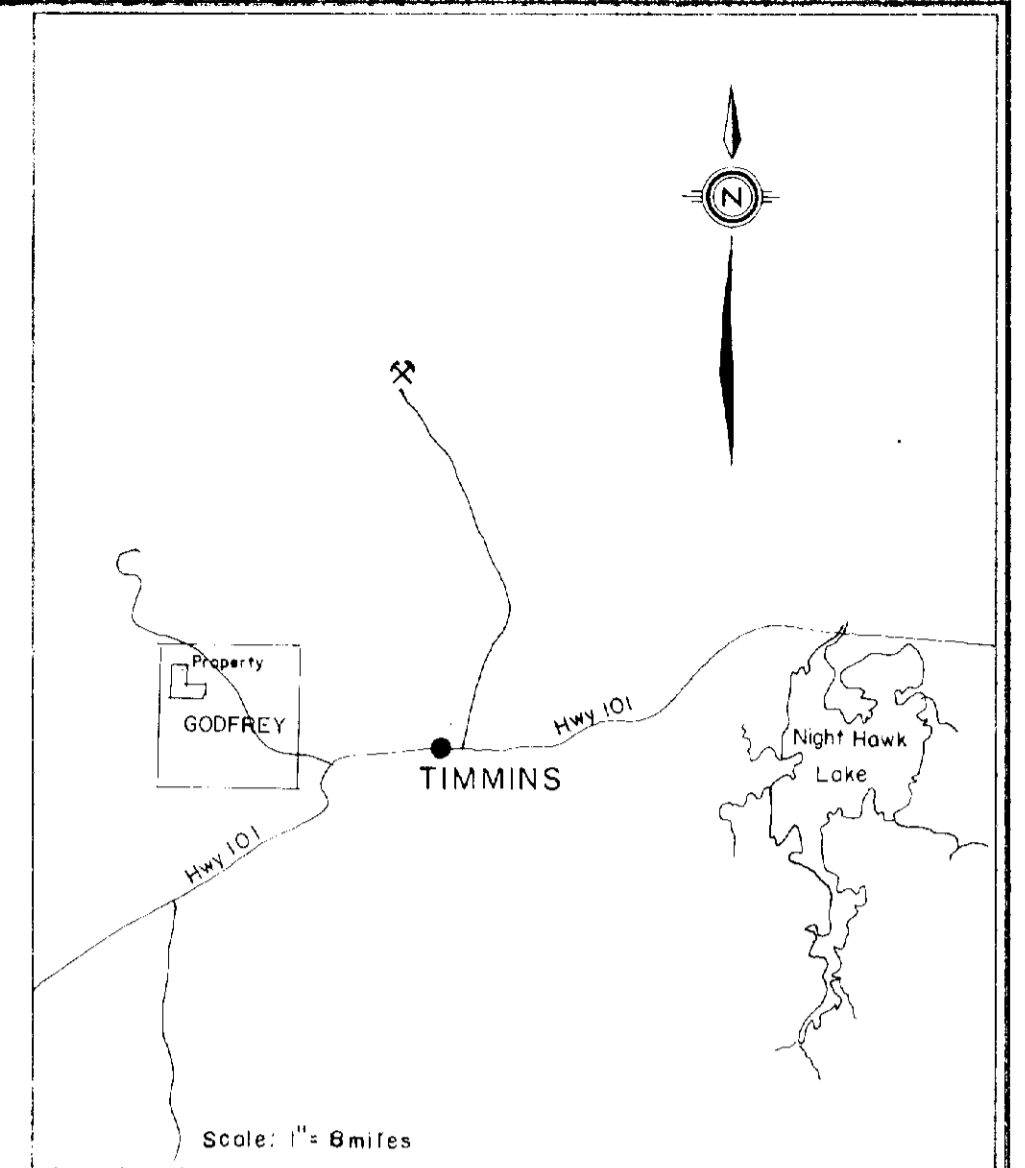
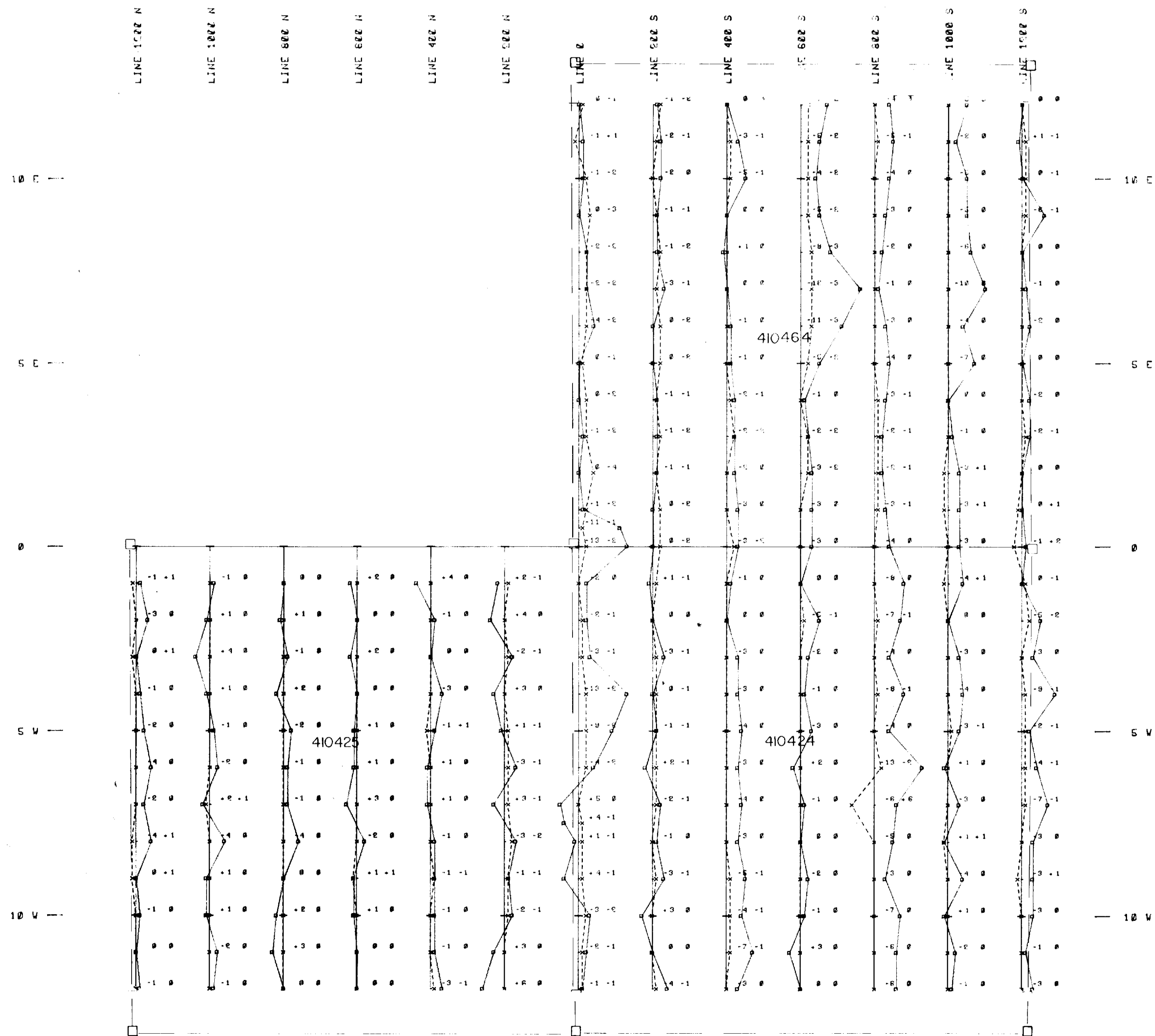
Mountjoy Twp. (M.302)

Lot 12 11 10 9 8 7 6 5 4 3 2 1

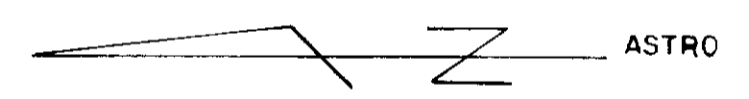
Bristol Twp. (M.264)



42A12SE0418 2.1828 GODFREY



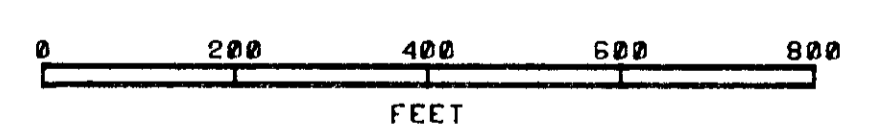
KEY MAP



LEGEND

IN-PHASE READINGS
 QUADRATURE READINGS

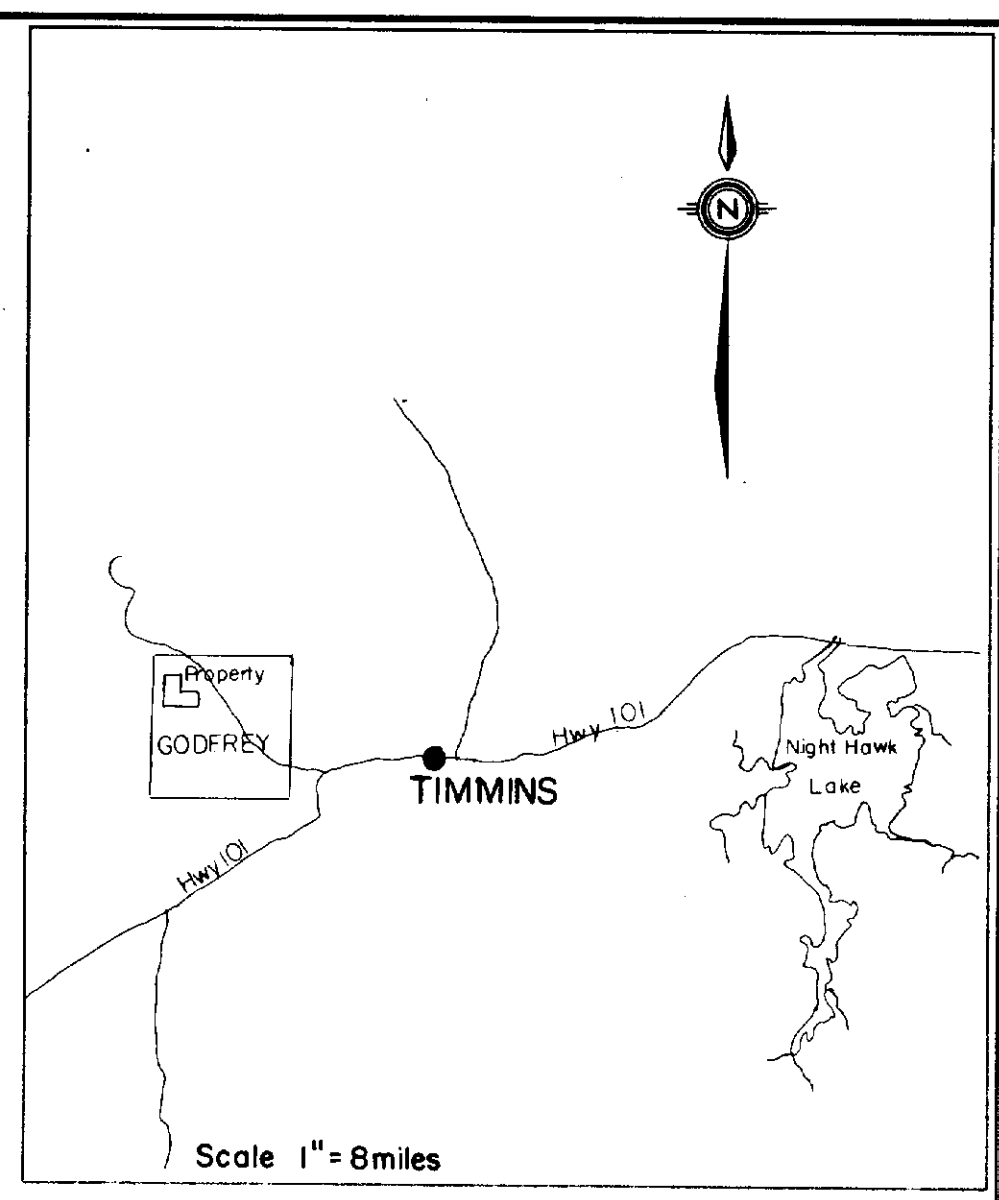
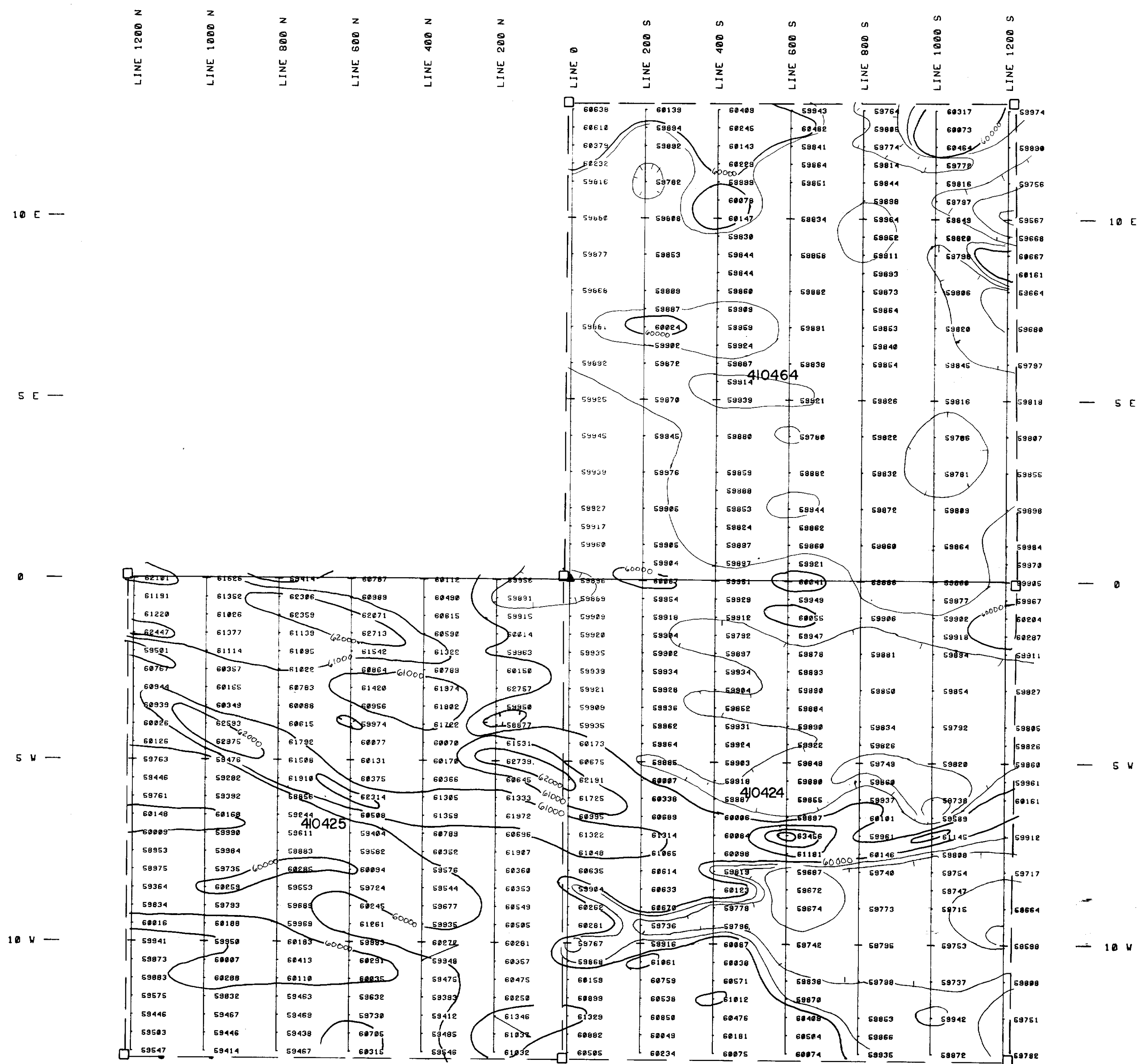
INSTRUMENT : GEONICS EM 17
 FREQUENCY : 1600 HZ
 COIL SPACING : 200 FEET
 PROFILE SCALE : 1" = 20'



Texasgulf Canada Ltd.	
HORIZONTAL LOOP SURVEY	
GODFREY 51	
WORK BY	DATE
	Nov. 1974



M. A. Bastien



KEY MAP

ASTRO

LEGEND

INSTRUMENT : GEOMETRICS G816
 TYPE : PROTON PRECESSION. TOTAL FIELD
 READINGS IN GAMMAS
 ▲ Magnetic Base Station



Texasgulf Canada Ltd.	
MAGNETIC SURVEY	
GODFREY 51 21024	
WORK BY	DATE
	Nov. 1974



W. A. Banting