



42A12SE0437 27 GODFREY

010

# Diamond Drilling

Township of Godfrey

Report N<sup>o</sup>: 27

Work performed by: Mespi Mines Ltd.

Claim N <sup>o</sup>	Hole N <sup>o</sup>	Footage	Date	Note
P 101155	M-70-2	564'	Jan/70	(1)
P 101159	M-70-3	654'	Jan/70	(1)
	M-70-4	622'	Feb/70	(1)

## Notes:

Autopositive enclosed

(1) 171/70

# DIAMOND DRILL RECORD

**PROPERTY** MESPI MINES LIMITED **HOLE NO.** M-70-2  
**TOWNSHIP** Godfrey Township **PAGE NO.** 1  
**LOCATION** LINE 0/1E **CORE LOCATION** Office **STARTED** January 24, 1970  
 P101155 **DATUM** **COMPLETED** January 29, 1970  
**BEARING** Grid E (S45°E) **DEPTH** 564'  
**ELEVATION** **DIP** Collar -45°

DEPTH FEET	FORMATION	SAMPLE NO.	WIDTH OF SAMPLE				
0 - 50	CASING						
50 - 248.5	DIABASE						
	Medium to coarse grained, massive, equigranular, gabbroic rock. Gradational change to aphanitic from 225' to 248.5'						
248.5 - 551	FELSIC CRYSTAL TUFF						
	Light to medium grey, inequigranular rock consisting of pink to grey fragments of feldspar (locally grey-green colour due to epidote alteration) in a very fine grained, dark grey matrix. Fragments are definitely not phenocrysts. Full range of size from fine to coarse grained, angular to sub-rounded.						
	Locally fine grained, massive tuff bands at 40° to c.a.						
551 - 554	FELSIC DIKE						
	Aphanitic chilled contacts, fine grained central zone. Medium grey colour, probably dacitic. Minor carbonate veining						

#171/70 Godfrey Jp  
 Mespi Mines Ltd

Drilled By Bradley Bros.

Signed *John I. George*  
 SHIELD GEOPHYSICS LIMITED



# DIAMOND DRILL RECORD

**PROPERTY** MESPI MINES LIMITED **HOLE NO.** M-70-3  
**TOWNSHIP** Godfrey Township **PAGE NO.** 1  
**LOCATION** LINE 0/6E **CORE LOCATION** Office **STARTED** January 31, 1970  
P101159 **DATUM** Collar **COMPLETED** February 5, 1970  
**BEARING** Grid E (S45°E) **DEPTH** 654'  
**ELEVATION** \_\_\_\_\_ **DIP** Collar -50°

DEPTH FEET	FORMATION	SAMPLE NO.	WIDTH OF SAMPLE				
0 - 85	CASING						
85 - 103	DIORITIC INTRUSIVE (?) Medium to dark grey, medium grained rock consisting of grey feldspar and chloritized mafic minerals. Some secondary quartz. Quartz-carbonate veinlets throughout. 98 - 99.5: Dissem. py						
103 - 126	Gradational alteration of dioritic rocks due to fault zone at 106'. Increased carbonate alteration.						
106 - 146	FAULT ZONE 106 - 127: Soft, limonite stained fault gouge with occasional zone of high altered diorite. 127 - 146: Green, sheared, fine grained, chloritic rock. Locally brecciated. Quite porous due to weathering and solution phenomena.						
146 - 215	INTERMEDIATE TO MAFIC METAVOLCANIC ROCKS Dark grey green, very fine grained, soft, chloritic rock with minor dissem. pyrite						

Drilled By Bradley Bros.

Signed *[Signature]*  
SHIELD GEOPHYSICS LIMITED

# DIAMOND DRILL RECORD

**PROPERTY** \_\_\_\_\_ MESPI MINES LIMITED **HOLE NO.** M-70-3  
**TOWNSHIP** \_\_\_\_\_ Godfrey Township **PAGE NO.** 2

**LOCATION** \_\_\_\_\_ **CORE LOCATION** \_\_\_\_\_ **STARTED** \_\_\_\_\_  
 \_\_\_\_\_ **DATUM** \_\_\_\_\_ **COMPLETED** \_\_\_\_\_  
 \_\_\_\_\_ **BEARING** \_\_\_\_\_ **DEPTH** \_\_\_\_\_  
**ELEVATION** \_\_\_\_\_ **DIP** \_\_\_\_\_

DEPTH FEET	FORMATION	SAMPLE NO.	WIDTH OF SAMPLE			
	151 - 153: Weathered zone very porous					
	160.5 - 162: Minor breccia zone					
	165.5 - 172: Porous weathered zone					
	173 - 199: Up to 10% carbonate and epidote veining					
	199 - 214.5: Numerous, fine, white carbonate veinlets					
	214.5 - 215: Breccia zone					
215 - 276	<u>INTERMEDIATE TO FELSIC METAVOLCANIC ROCKS</u> Medium grey, fine grained, soft, locally siliceous rock					
	233 - 234.5: Fractured zone with carbonate fracture-filling					
	234.5 - 242: Agglomeratic/pillowed section					
	242 - 276: Minor local brecciation					
276 - 292.5	<u>INTERMEDIATE TO MAFIC METAVOLCANIC ROCKS</u> Medium to fine grained, medium grey green, soft, chloritic rock with dissem. cubic pyrite					
292.5 - 307	As 215 - 276					

Drilled By Bradley Bros.

Signed  \_\_\_\_\_  
**SHIELD GEOPHYSICS LIMITED**

# DIAMOND DRILL RECORD

**PROPERTY** \_\_\_\_\_ MESPI MINES LIMITED **HOLE NO.** M-70-3  
**TOWNSHIP** \_\_\_\_\_ Godfrey Township **PAGE NO.** 3

**LOCATION** \_\_\_\_\_ **CORE LOCATION** \_\_\_\_\_ **STARTED** \_\_\_\_\_  
 \_\_\_\_\_ **DATUM** \_\_\_\_\_ **COMPLETED** \_\_\_\_\_  
 \_\_\_\_\_ **BEARING** \_\_\_\_\_ **DEPTH** \_\_\_\_\_  
**ELEVATION** \_\_\_\_\_ **DIP** \_\_\_\_\_

DEPTH FEET	FORMATION	SAMPLE NO.	WIDTH OF SAMPLE	Cu %	Zn %	Ag. oz.
	307' Amygdular flow top?					
307 - 323	FELSIC METAVOLCANIC ROCKS					
	307 - 323: Fine grained, grey, soft, dacitic tuff?					
	323 - 373: Rhyodacitic tuff-breccia and agglomerate. Moderate hardness, medium to light grey, very fine grained.					
	373 - 374: Welded Tuff? Numerous medium grained, zoned shards.					
	381 - 392: Rhyodacitic agglomerate/breccia. Medium to light grey, very fine grained, siliceous rock. Massive to coarse breccia.					
	Chloritic alteration increases from 381 to 392. At 392, rock appears andesitic					
	381 - 384.5: Split core. Dissem. sphalerate less than 1% overall					
	381' 1½" - 383' 7½"	351	2.5'	0.03	0.10	Tr.
	383' 7½" - 384' 7½"	352	1'	Tr.	Tr.	Tr.

Drilled By Bradley Bros.

Signed \_\_\_\_\_

**SHIELD GEOPHYSICS LIMITED**

# DIAMOND DRILL RECORD

PROPERTY MESPI MINES LIMITED HOLE NO. M-70-3  
 TOWNSHIP Godfrey Township PAGE NO. 4

LOCATION \_\_\_\_\_ CORE LOCATION \_\_\_\_\_ STARTED \_\_\_\_\_  
 \_\_\_\_\_ DATUM \_\_\_\_\_ COMPLETED \_\_\_\_\_  
 \_\_\_\_\_ BEARING \_\_\_\_\_ DEPTH \_\_\_\_\_  
 ELEVATION \_\_\_\_\_ DIP \_\_\_\_\_

DEPTH FEET	FORMATION	SAMPLE NO.	WIDTH OF SAMPLE	Cu %	Zn %	Ag. oz.
392 - 425	CHLORITIZED FELSIC METAVOLCANIC ROCKS					
	Mottled colour, blebs of chloritic material and light grey felsic material					
	392' 3" - 394' 9" Split core. Minor sphalerite	353	2.5	0.05	1.33	0.02
	405.5 - 410: Split Core Sphalerite throughout					
	Overall less than 5%					
	410 - 413: Split Core Sphalerite and chalcoppyrite dissem. throughout. Approximately 5% sph. and 1% cpy.					
	405.5 - 407	354	1.5'	Tr.	0.05	Tr.
	407 - 410	16	3'	0.03	0.74	Tr.
	410 - 413	17	3'	0.29	2.84	0.04
425 - 602	FELSIC (Dacitic?) METAVOLCANIC ROCKS					
	Fine grained, massive to pillowed/agglomeratic, medium grey, medium hard, locally amygdular. Local massive sections are probably tuff.					
	425.5: Small splash of cpy					
	451 : 2" White quartz vein.					

Drilled By Bradley Bros.

Signed 

# DIAMOND DRILL RECORD

**PROPERTY** MESPI MINES LIMITED **HOLE NO.** M-70-3  
**TOWNSHIP** Godfrey Township **PAGE NO.** 5

**LOCATION** \_\_\_\_\_ **CORE LOCATION** \_\_\_\_\_ **STARTED** \_\_\_\_\_  
 \_\_\_\_\_ **DATUM** \_\_\_\_\_ **COMPLETED** \_\_\_\_\_  
 \_\_\_\_\_ **BEARING** \_\_\_\_\_ **DEPTH** \_\_\_\_\_  
**ELEVATION** \_\_\_\_\_ **DIP** \_\_\_\_\_

DEPTH FEET	FORMATION	SAMPLE NO.	WIDTH OF SAMPLE	Cu %	Zn %	Ag. oz.
	467 - 467.5: 25% pyrite. The section from 466.5 to 468 appears chloritic.					
	468 - 469: 8" white to grey quartz-carbonate vein					
	496 - 501: Split Core, Sphalerte and chalcopryite throughout section. From 496 - 498 minor py and po occur. From 499 - 500.5 Up to 10% po with less than 5% combined sph and cpy	18	5'	0.33	0.32	0.05
602 - 654	<u>IMMEDIATE TO MAFIC METAVOLCANIC/INTRUSIVE ROCKS</u> Fine grained at 602 becoming variably medium to coarse grained at 617 to 654. Medium to dark grey, massive equigranular, locally sheared, locally altered to epidote. Quartz and quartz-carbonate veining throughout. Definitely not diabase. If intrusive it could be related to volcanism or the mafic intrusives in the Godfrey area.					
654'	End of Hole					

Drilled By Bradley Bros.

Signed \_\_\_\_\_  
**SHIELD GEOPHYSICS LIMITED**



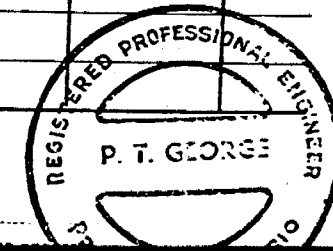
# DIAMOND DRILL RECORD

PROPERTY MESPI MINES LIMITED HOLE NO. 4  
 TOWNSHIP Godfrey Township PAGE NO. 1  
 LOCATION Line 2N 7+60W CORE LOCATION Office STARTED February 8, 1970  
P 101159 DATUM Collar COMPLETED February 24, 1970  
 BEARING Grid E (S45°E True) DEPTH 622'  
 ELEVATION \_\_\_\_\_ DIP -45

DEPTH FEET	FORMATION	SAMPLE NO.	WIDTH OF SAMPLE				
0 - 115.5	CASING: Boulders 106 - 115.5'						
115.5 - 130.5	INTERMEDIATE METAVOLCANIC ROCKS (TUFF?) Fine grained, massive, dark grey, variably silicified rocks. Core weathered and fractured.						
	123.5 - 125.2: Brecciated and silicified zone.						
130.5 - 151	FAULT ZONE (?) Brecciated, oxidized zone in metavolcanic rocks.						
	123.5 - 125.2: breccia, silicified						
	130.5 - 135: fractured, brecciated, silicified oxidized						
	135 - 142.5: massive to fractured						
	142.5 - 151: Fractured, oxidized zone; much ground core.						
151 - 154	As 115 - 130.5						
154 - 157	FELDSPAR PORPHYRY (TUFF) Fine to medium grained, inequigranular, grey to pink rock. Variably sheared and oxidized.						

Drilled By Bradley Bros.

Signed P. T. George



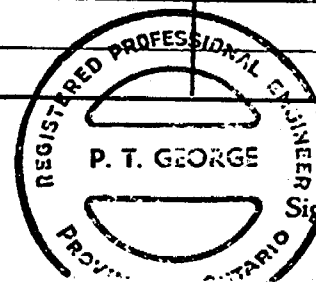
# DIAMOND DRILL RECORD

PROPERTY MESPI MINES LIMITED HOLE NO. 4  
 TOWNSHIP Godfrey Township PAGE NO. 2

LOCATION \_\_\_\_\_ CORE LOCATION \_\_\_\_\_ STARTED \_\_\_\_\_  
 \_\_\_\_\_ DATUM \_\_\_\_\_ COMPLETED \_\_\_\_\_  
 \_\_\_\_\_ BEARING \_\_\_\_\_ DEPTH \_\_\_\_\_  
 ELEVATION \_\_\_\_\_ DIP \_\_\_\_\_

DEPTH FEET	FORMATION	SAMPLE NO.	WIDTH OF SAMPLE	oz/ton Au	oz/ton Ag	% Cu	% Zn
157 - 181	INTERMEDIATE PYROCLASTIC						
	Fine grained matrix containing medium to coarse grained angular to rounded fragments						
	171 - 174: Quartz-carbonate veining.						
	Minor cpy in vein and wallrocks at 171.5						
181 - 203	INTERMEDIATE TO FELSIC FLOW						
	Fine grained, light grey, moderately hard, locally vague selvages, possibly agglomerate.						
203 - 227.5	TUFF						
	Dark grey, very fine grained, faintly banded at 35° to c.a.						
	208 - 212.5: Up to 50% quartz veining. Minor cpy in wallrocks. Minor cpy and sph in silicified zones at 209 - 209.5 and 212 - 212.5.						
	212.5 - 213: Light grey handed cherty tuff at 35° to c.a.						
	208 - 210: split core		2'	Tr	Tr	.06	nil

Drilled By Bradley Bros.



Signed

*P. T. George*  
 SHIELD GEOPHYSICS LIMITED

# DIAMOND DRILL RECORD

**PROPERTY** MESPI MINES LIMITED **HOLE NO.** 4  
**TOWNSHIP** Godfrey Township **PAGE NO.** 3

**LOCATION** \_\_\_\_\_ **CORE LOCATION** \_\_\_\_\_ **STARTED** \_\_\_\_\_  
 \_\_\_\_\_ **DATUM** \_\_\_\_\_ **COMPLETED** \_\_\_\_\_  
 \_\_\_\_\_ **BEARING** \_\_\_\_\_ **DEPTH** \_\_\_\_\_  
**ELEVATION** \_\_\_\_\_ **DIP** \_\_\_\_\_

DEPTH FEET	FORMATION	SAMPLE NO.	WIDTH OF SAMPLE	oz/ton Au	oz/ton Ag	% Cu	% Zn
	210 - 212.5: split core		2.5'	Tr	Tr	.16	.08
227.5 - 241	INTERMEDIATE TO MAFIC VOLCANIC FLOW Fine to coarse grained, grain size varies throughout section, dark to medium grey rock consisting primarily of feldspar, amphibole and pyroxene.						
	228.- 230.5: split core		2.5'	Tr	.06	.93	nil
241 - 277.5	INTERMEDIATE FLOW/TUFF Fine grained, grey, massive rock 277 - 277.5 Amygdular section (flow top?) possibly indicating tops down hole.						
277.5 - 289	INTERMEDIATE TO FELSIC TUFF Very fine grained, grey, faintly banded at 35° - 45° to c.a. 281.5 - 289: fractured and silicified zone						
289 - 302	FELSIC TO INTERMEDIATE AGGLOMERATE/FLOW Fine grained, silicified, with local amygdular agglomeratic sections. Minor chlorite alteration and occasional grey quartz vein.						

Drilled By Bradley Bros.

Signed *[Signature]*



# DIAMOND DRILL RECORD

**SEE HOLE**

PROPERTY MESPI MINES LIMITED HOLE NO. 4

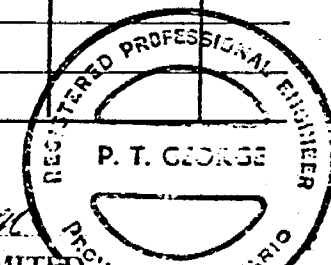
TOWNSHIP Godfrey Township PAGE NO. 4

LOCATION \_\_\_\_\_ CORE LOCATION \_\_\_\_\_ STARTED \_\_\_\_\_  
 \_\_\_\_\_ DATUM \_\_\_\_\_ COMPLETED \_\_\_\_\_  
 \_\_\_\_\_ BEARING \_\_\_\_\_ DEPTH \_\_\_\_\_  
 ELEVATION \_\_\_\_\_ DIP \_\_\_\_\_

DEPTH FEET	FORMATION	SAMPLE NO.	WIDTH OF SAMPLE	oz/ton Au	oz/ton Ag	% Cu	% Zn
	289 - 289.8: split core, 1 - 2% dissem. cpy.		0.8'	Tr	Tr	.19	nil
	294.2 - 294.8: split core, dissem. po and cpy in grey quartz vein		0.6'	.005	.07	1.17	nil
302 - 308	INTERMEDIATE FLOW Dark grey green, slightly chloritic fine grained, equigranular, locally brecciated rock.						
308 - 425	FELSIC TO INTERMEDIATE TUFF Very fine grained, equigranular to inequigranular with fine to medium grained fragments, medium grey, silic rock having a massive to fragmental texture. Local carbonate stringers and local carbonatized and silicified zones Local amygduloidal sections probably are bombs or lapilli.						
425 - 581	PILLOWED/AGGLOMERATIC FELSIC VOLCANICS Light grey, very fine grained, siliceous rocks with amygdular contacts at 6" to 2' intervals Local tuffaceous sections.						

Drilled By Bradley Bros.

Signed P. T. George

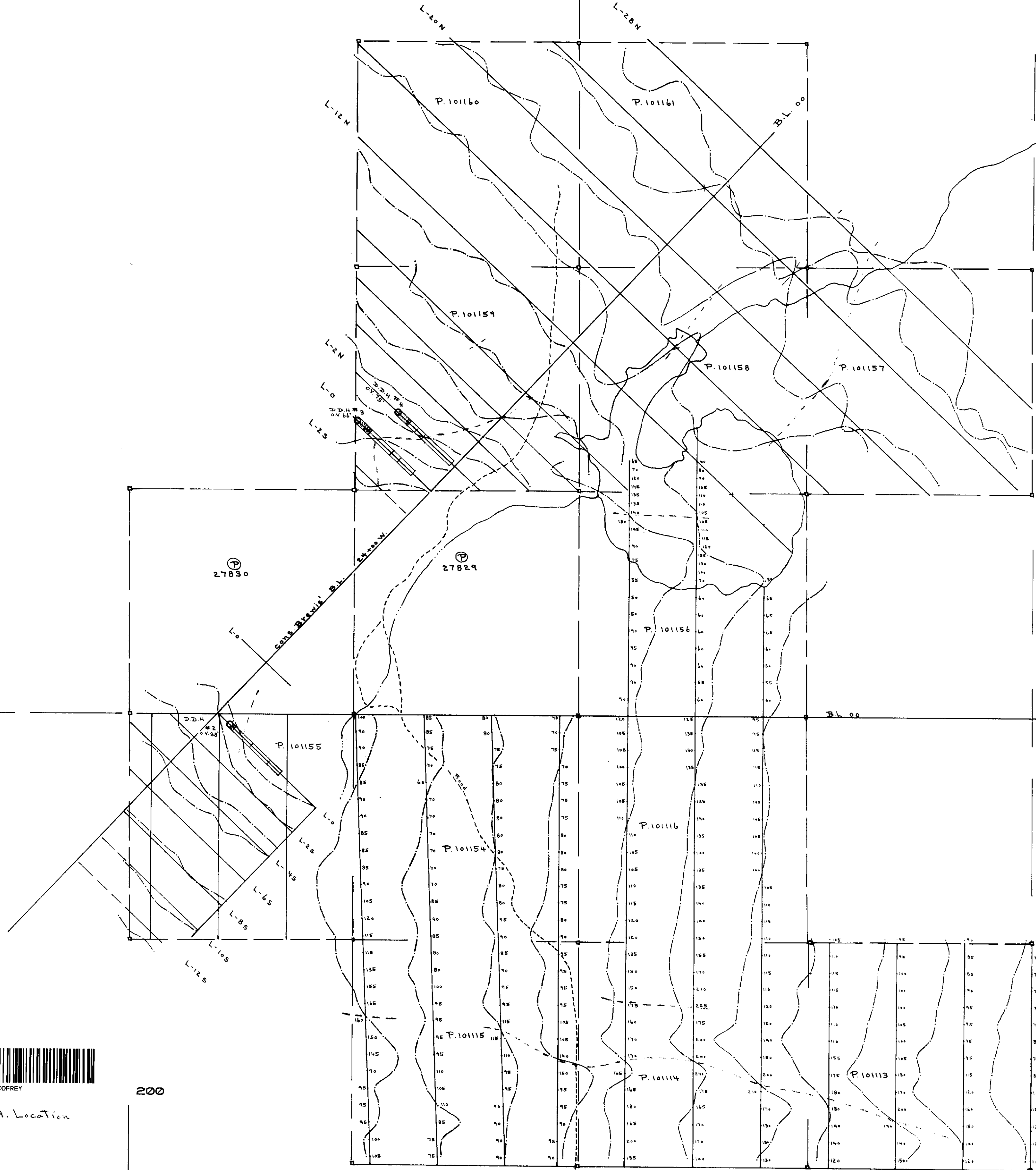




CON. 6  
CON. 5

CON. 5  
CON. 4

Turnbull Twp  
Godfrey Twp



Mespi Mines Ltd.  
Godfrey Twp.  
Crone Radem V.L.F.  
Electro-Magnetic Survey & D.D.H. Location  
Map scale: 1"=400'  
Profile scale: 1"=40'  
Field strength plotted at station



200

Godfrey Twp, Legend  
D.D. # 27

- 16° south dip angle
- Field strength reading (maximum coupling)
- conductor axis
- 16° North Dip angle

Trans. Station  
Cutler Mine  
Note: no field strength on NW 5/8 lines