



42A12SE0552 11 MASSEY

010

MASSEY TOWNSHIP REPORT #11

This file contains work performed by Globe Exploration on claims:

P.70153	Hole #1; 500'	March, 1965
P.70146	Hole #2; 158'	March, 1965
	2A; 494'	April, 1965
P.70145	Hole #3; 502'	April, 1965
	1654'	

DIAMOND DRILL RECORD

P. 70142

PROPERTY Globe Explorations HOLE No. 1
 SHEET NUMBER 1 SECTION FROM 0' TO 113.9' STARTED March 16, 1965.
 LATITUDE _____ DATUM Claim P-70153 COMPLETED March 26, 1965.
 DEPARTURE Collared at L. 45W., BEARING North ULTIMATE DEPTH 500 ft.
500 ft. north of base line.
 ELEVATION _____ DIP -45° PROPOSED DEPTH 500 ft.

DEPTH FEET	FORMATION	SAMPLE NO.	FROM	TO	WIDTH	ASSAY VALUES			
0 - 87'	Casing								
87.0-95.0	Banded greywacke-fractured high quartz- occasional scattered pyrite or pyrotite.								
95.0-97.3	Diabase stringers or seams in dark grey greenstone or greywacke.								
97.3-97.5	Quartz seam 1/2".								
97.5-99.5	Dark green diorite or andesitic rock. Many slips and seams.								
99.5-111.4	Greywacke - grey-some quartz stringers. Very very low mineralization.								
111.4-113.9	Altered greywacke-silicified and micaceous-many slips & quartz seams. Pyrite Pyrotite & Chalco mineralization (G 1)								
		G1	111.4	113.9	2.5				

NORTHERN MINER FORM 505 REV. 54

DRILLED BY Bradley Bros. Ltd., Noranda, P.Q.

SIGNED *[Signature]*

DIAMOND DRILL RECORD

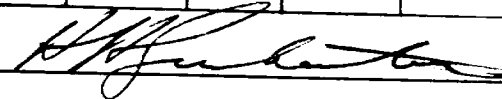
PROPERTY Globe Explorations HOLE No. 1
 SHEET NUMBER 2 SECTION FROM 113.9' TO 160.0' STARTED March 16, 1965.
 LATITUDE _____ DATUM Claim P-70153 COMPLETED March 26, 1965.
 DEPARTURE Collared at L. 45W., BEARING North ULTIMATE DEPTH 500 ft.
500 ft. north of base line. ELEVATION _____ DIP -45° PROPOSED DEPTH 500 ft.

DEPTH FEET	FORMATION	SAMPLE NO.	FROM	TO	WIDTH	ASSAY VALUES			
113.9-117.6	Altered & silicified greywacke- high quartz content-very hard & compact.								
117.6-118.4	Zone of mineralization -Pyrotite (G 2)	G2	117.6	118.4	.8				
118.4-123.2	Greywacke as above.								
123.2-125.0	Mineralized zone-Altered with quartz stringers, pyrotite, pyrite & chalco- At 45° to core & various angles - Hard - (G 3)	G3	123.2	125.0	1.8				
125.0-143.1	Very fine grained Greywacke approaching gabbroic structure. Dense-compact - seams at 45° to core-some epidote.								
143.1-145.2	Dalmanite - some quartz stringers.								
145.2-150.0	Dense compact greywacke-banded. Slight seams of pyrotite at 162-153.6-no chalco.								

NORTHERN MINER FORM 905 REV./54

DRILLED BY Bradley Bros. Ltd., Noranda, P.Q.

SIGNED



DIAMOND DRILL RECORD

PROPERTY Globe Explorations HOLE No. 1
 SHEET NUMBER 3 SECTION FROM 160.0' TO 180.4' STARTED March 16, 1965.
 LATITUDE _____ DATUM Claim P-70153 COMPLETED March 26, 1965.
 DEPARTURE Collared at L. 45W., BEARING North ULTIMATE DEPTH 500 ft.
500 ft. north of base line.
 ELEVATION _____ DIP -45° PROPOSED DEPTH 500 ft.

DEPTH FEET	FORMATION	SAMPLE NO.	FROM	TO	WIDTH	ASSAY VALUES			
160.0-161.0	Silicified zone with much quartz - low mineralization - (pyrotite)								
161.0-163.6	Quartz & Greywacke - altered & silicified, mineralized with pyrite, pyrotite & chalco.								
	(G 4)	G 4	161.0	163.6	2.6				
163.6-177.4	Silicified-quartz & greywacke - some mineral banded, chlorite slips, very strong quartz 169'-173'.								
177.4-178.2	Mineral zone as above.								
178.2-179.9	Quartz as before.								
179.9-180.4	Micaceous greywacke - dark grey green - Dalmationite - some mineral in slips & blobs.								

NORTHERN MINER FORM 505 REV./54

DRILLED BY Bradley Bros. Ltd., Noranda, P. Q.

SIGNED _____

[Handwritten Signature]

DIAMOND DRILL RECORD

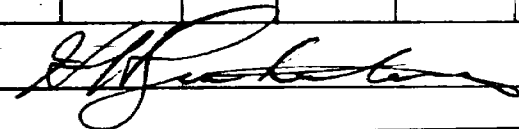
PROPERTY Globe Explorations HOLE No. 1
 SHEET NUMBER 4 SECTION FROM 184.4' TO 224.3' STARTED March 16, 1965.
 LATITUDE _____ DATUM Claim P-70153 COMPLETED March 26, 1965.
 DEPARTURE Collared at L. 45W., BEARING North ULTIMATE DEPTH 500 ft.
500 ft. north of base line. PROPOSED DEPTH 500 ft.
 ELEVATION _____ DIP -45°

DEPTH FEET	FORMATION	SAMPLE NO.	FROM	TO	WIDTH	ASSAY VALUES			
188.4-194.1	Mineralized zone-heavily mineralized- in quartz vein pyrite, pyrotite, chalco (G 5)	G5	188.4	194.1	5.7				
194.1-209.3	Quartz vein with altered & carbonitized slips-some greywacke, alternates with quartz veins-some scattered mineraliz- ation. Mineral seam (pyrotite) at 202.3 to 202.6.								
209.3-211.0	Mineralized zone-pyrotite, & chalco in quartz stringers (G 6)	G6	209.3	211.0	1.7				
211.0-222.7	Quartz & greywacke-some low mineralization Highly bedded and altered.								
222.7-224.3	Mineralized zone (G7)	G7	222.7	224.3	1.6				

NORTHERN MINER FORM 509 REV./54

DRILLED BY Bradley Bros. Ltd., Noranda, P. Q.

SIGNED _____



DIAMOND DRILL RECORD

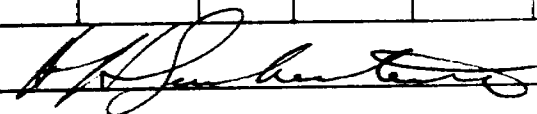
PROPERTY Globe Explorations HOLE No. 1
 SHEET NUMBER 5 SECTION FROM 224.3' TO 280.0' STARTED March 16, 1965.
 LATITUDE _____ DATUM Claim P-70153 COMPLETED March 26, 1965.
 DEPARTURE Collared at L. 45W., BEARING North ULTIMATE DEPTH 500 ft.
500 ft. north of base line. DIP -45° PROPOSED DEPTH 500 ft.
 ELEVATION _____

DEPTH FEET	FORMATION	SAMPLE NO.	FROM	TO	WIDTH	ASSAY VALUES			
224.3-241.0	Quartz & greywacke as before-silicified and altered.								
241.0-243.0	Pale green greywacke-low to no quartz.								
243.0-253.6	Grey greywacke-low quartz-low scattered mineralization.								
253.6-259.4	Dalmationite (Greywacke)								
259.4-280.0	Altered silicified greywacke-quartz infusions, banded. Grades in colour from light to medium grey. Low to no mineralization - some quartz stringers. Not many slips.								

NORTHERN MINER FORM 505 REV./54

DRILLED BY Bradley Bros., Noranda P. Q.

SIGNED



DIAMOND DRILL RECORD

PROPERTY Globe Explorations HOLE No. 1
 SHEET NUMBER _____ SECTION FROM 279.0^h TO 323.0^h STARTED March 16, 1965.
 LATITUDE _____ DATUM Claim P-70153 COMPLETED March 26, 1965.
 DEPARTURE Collared at L. 45W., BEARING North ULTIMATE DEPTH 500 ft.
500 ft. north of base line.
 ELEVATION _____ DIP -45° PROPOSED DEPTH 500 ft.

DEPTH FEET	FORMATION	SAMPLE NO.	FROM	TO	WIDTH	ASSAY VALUES			
279.0-281.0	Greywacke-banded-some pyrite crystals.								
281.0-287.0	Greywacke with 30% quartz intrusive bending at 15°.								
287.0-288.0	Banded quartz, Amphibolite & Greywacke, spotted.								
288.0-294.0	Greywacke and quartz banded.								
294.0-298.0	Compact unbanded greywacke.								
298.0-303.0	Banded greywacke & quartz.								
303.0-307.0	Compact Greywacke.								
308.0-313.0	Quartz banding in greywacke-50% quartz stringers.								
313.0-315.0	Quartz seam - impure.								
315.0-323.0	Greywacke & quartz varies from 3% to 30% quartz.								

NORTHERN MINER FORM 505 REV./54

DRILLED BY Bradley Bros. Ltd., Noranda, P. Q.

SIGNED

DIAMOND DRILL RECORD

PROPERTY Globe Explorations HOLE No. 1
 SHEET NUMBER SECTION FROM 323.00 TO 373.00 STARTED March 16, 1965.
 LATITUDE DATUM Claim P-70153 COMPLETED March 26, 1965.
 DEPTH TYPE Collared at L. 45W., BEARING North ULTIMATE DEPTH 500 ft.
300 ft. north of base line. ELEVATION DIP -45° PROPOSED DEPTH 500 ft.

DEPTH FEET	FORMATION	SAMPLE NO.	FROM	TO	WIDTH	ASSAY VALUES			
323.0-324.0	Pyrrhotite in greywacke - no chalco.								
324.0-331.6	Silicified greywacke - 60% quartz.								
331.6-332.8	Pyrrhotite blebs & stringers in sil- icified greywacke.								
332.8-349.0	Greywacke with intense quartz silicif- ication & banding-varies in texture & colour.								
349.0-353.0	Greywacke, quartz & feldspar slips & seams-silicified-pinker-granitic sec- tion - pink and white.								
353.0-355.0	Dark green greywacke with distinct quartz seams and blebs.								
355.0-373.0	Silicified greywacke, quartz & altered greenstone in bands up to 6" at 40%. Grey in colour.								

NORTHERN MINER FORM 505 REV./54

Bradley Bros. Ltd., Noranda, P.Q.

DRILLED BY _____

SIGNED _____

DIAMOND DRILL RECORD

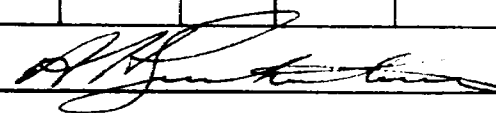
PROPERTY Globe Explorations HOLE No. 1
 SHEET NUMBER SECTION FROM 373.0' TO 434.8' STARTED March 16, 1965.
 LATITUDE DATUM Claim P-70153 COMPLETED March 26, 1965.
 DEPARTURE Collared at L. 45W., BEARING North ULTIMATE DEPTH 500 ft.
500 ft. north of base line. DIP -45° PROPOSED DEPTH 500 ft.
 ELEVATION

DEPTH FEET	FORMATION	SAMPLE NO.	FROM	TO	WIDTH	ASSAY VALUES			
373.0-378.0	Granitic rock - strong pink & white feldspar & quartz.								
378.0-387.4	Greywacke with quartz stringers.								
387.4-390.7	Quartz & granitic rock white & pink. Granular.								
390.7-393.0	Altered greywacke.								
393.0-398.0	Granitic rock with quartz stringers.								
398.0-400.0	Very fine grained greywacke - compact with pink alteration seams.								
400.0-406.4	Pink granite with greenstone blebs.								
406.4-408.1	Greywacke.								
408.1-415.4	Pink granite-occas. seams of greenstone.								
415.4-417.0	Silicified greenstone (greywacke)								
417.0-434.8	Greywacke-occas. quartz stringers.								

NORTHERN MINER FORM 503 REV./54

DRILLED BY Bradley Bros. Ltd., Noranda, P. Q.

SIGNED



DIAMOND DRILL RECORD

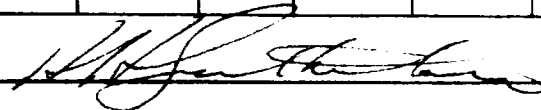
PROPERTY Globe Explorations HOLE No. 1
 SHEET NUMBER _____ SECTION FROM 434.8' TO 481.8' STARTED March 16, 1965.
 LATITUDE _____ DATUM Claim P-70153 COMPLETED March 26, 1965.
 DEPARTURE Collared at L. 45W., BEARING North ULTIMATE DEPTH 500 ft.
500 ft. north of base line. DIP -45° PROPOSED DEPTH 500 ft.
 ELEVATION _____

DEPTH FEET	FORMATION	SAMPLE NO.	FROM	TO	WIDTH	ASSAY VALUES			
434.8-435.7	Quartz stringers with feldspar-6" wide.								
435.7-436.7	Silicified greywacke with quartz stringers.								
436.7-437.6	Pegmatite dikelets-red, white & grey.								
437.6-451.0	Porphyry - white feldspar crystals in greenstone (amphibolite)(dolmationite reversed.)								
451.0-452.6	Silicified greenstone.								
452.6-455.0	Porphyry as before.								
455.0-463.8	Silicified banded greenstone or greywacke-high quartz. Occas. blebs and seams of porphyry.								
463.8-481.0	Green & white porphyry with occas. patches of silicified greenstone.								
481.0-481.8	Porphyry as before - schistosed.								

NORTHERN MINES ~~BY~~ Baley Bros. Ltd., Noranda, P. Q.

DRILLED BY _____

SIGNED _____



DIAMOND DRILL RECORD

PROPERTY Globe Explorations HOLE No. 1
 SHEET NUMBER _____ SECTION FROM 481.8' TO 500.0' STARTED March 16, 1965.
 LATITUDE _____ DATUM Claim P-70153 COMPLETED March 26, 1965.
 DEPARTURE Collared at L. 45W., BEARING North ULTIMATE DEPTH 500 ft.
500 ft. north of base line. DIP -45° PROPOSED DEPTH 500 ft.
 ELEVATION _____

DEPTH FEET	FORMATION	SAMPLE NO.	FROM	TO	WIDTH	ASSAY VALUES			
481.8-490.4	Quartz & silicified banded greywacke. Many quartz seams & veins.								
490.4-492.1	Greenstone banded & grades into Greenstone porphyry.								
492.1-500.0	Quartz zone silicified & altered- impure with granite & greenstone. 80% quartz.								
	END OF HOLE.								

NORTHERN MINER FORM 905 REV./54

DRILLED BY Bradley Bros. Ltd., Noranda, P. Q.

SIGNED 

GLOBE EXPLORATION & MINING CO. LTD.

Claim No. P-70146, Massey Twp.

Ontario.

D. D. H. No. 2A.

Footage Drilled	Formation	Remarks
196'-203'	Greyish granite gneiss with minor pyrite, a few streaks of pyrrhotite with specks of chalcopryrite.	Assay for gold.
297'-300'	Sulphide mineralization in more or less silicious banded material, probably gneiss. Sulphides are mostly pyrrhotite, some pyrite, local specks of chalcopryrite associated with pyrrhotite.	Assay for gold and silver.
326'-330'	Silicified greenstone or greywacke with some quartz-porphyroblastic sections. Minor specks of sulphides.	Assay for gold.
335'-341.5'	Silicified greenstone or greywacke with some quartz-porphyroblastic sections, specks of pyrite and a few streaks of pyrrhotite with minor chalcopryrite.	Assay for gold and silver.
347'-352'	Porphyroblastic and gneissic grey silicious rock with fine, disseminating and streaks of sulphides. Heavy-to-70%.	Assay for gold, silver and nickel.

S. S. S. S.

DIAMOND DRILL RECORD

Hole No. **2A** Sheet No. **1**

Property **Globe Exploration & Mining Co. Ltd.,**
 Location **Massey Twp., Ont., Claim No. F-70146.**

Dip
 -45°
 -47° at
 bottom of hole.

Elev. Collar **L. 30W., 545 ft. north of Base Line, drill North.**
 Datum
 Date Started **April 1st, 1965.**
 Date Completed **April 8th, 1965.**
 Drilled by **Bradley Bros. Ltd., Noranda, P. Q.**
 Logged by **S. S. Szetu.**

Latitude
 Departure
 Bearing

Total Footage **494**

Footage		Formation	Sample Number	Sample Footage	Sample Width	Gold Sample	Gold Sludge	Remarks
From	To							
0'	32'	Casing						
32'	49'	Banded greywacke, minor streaks of sulphides.						
49'	51.5'	Porphyroblastic and fine-grained massive grey rock, (greywacke?), with minor fine, disseminating sulphide.						
51.5'	82'	Greywacke.						
82'	138'	Greywacke with bands at 30° to core.						
138'	147.5'	More or less porphyroblastic altered zone.						
147.5'	164'	Greywacke.						
164'	176.6'	Grey granite gneiss.						
176.6'	183.5'	Fine-to-medium-grained diorite.						
183.5'	196'	Greyish granite gneiss.						
196'	277'	Greyish granite gneiss with some sulphide - mostly Pyrite; 196'-203' - a few local streaks of pyrrhotite with specks of chalcopyrite. Porphyroblastic from 243'-246'; Quartz from 233'-234', 266'-266.5'.						
277'	280'	Same, with disseminated-to-heavy sulphide.						
280'	286.5'	Granite gneiss, very minor sulphide.						
286.5'	297'	Coarse-to-fine-grained granite gneiss, local specks of pyrite.						
297'	300'	Mineralized silicious gneiss, mostly pyrrhotite, some pyrite, local specks of chalcopyrite.						
301'	325'	Fine-to-coarse-grained grey granite; coarse at 306-311', 318-321', 323.5-324'.						
325'	326'	Altered basic intrusive, specks of pyrite.						
326'	330'	Same, silicified with porphyroblastic-quartz, minor sulphides.						

Date of Examination

S. S. Szetu

DIAMOND DRILL RECORD

Hole No. **2A** Sheet No. **2.**

Property **Globe Exploration & Mining Co. Ltd.,**
 Location **Massey Twp., Ont., Claim No. P-70146.**

Latitude
 Departure
 Bearing

Dip

-45°
 -47° at
 bottom of hole.

Total Footage **494**

Elev. Collar **L. 30W., 545 ft. north of Base Line, drill North.**
 Datum
 Date Started **April 1st, 1965.**
 Date Completed **April 8th, 1965.**
 Drilled by **Bradley Bros. Ltd., Noranda, P. Q.**
 Logged by **S. S. Szetu.**

Footage		Formation	Sample Number	Sample Footage	Sample Width	Gold Sample	Gold Sludge	Remarks
From	To							
330'	335'	Altered basic intrusive, local porphyroblastic-quartz and specks of sulphides.						
335'	341.5'	Porphyroblastic, silicious, fine-grained volcanic or greywacke with specks and up to 5% sulphides, minor streaks of pyrrhotite with local minute chalcopyrite.						
341.5'	352'	Fine-grained basic rock with local disseminated pyrite. Porphyroblastic, silicious grey gneiss with disseminating and streaks of sulphides, up to 70%, mostly pyrrhotite.						
352'	392'	Dark grey porphyroblastic gneiss, very local disseminated sulphides; 374-375' - blocky; 375'-392' - blocky, porphyroblastic in places; granitic quartz vein at 385.2'-386'.						
392'	397'	Dark-grey or medium-grained porphyry.						
397'	399'	Porphyroblastic gneiss.						
399'	424'	Dark-grey, medium-grained porphyry, with short sections of black, fine-grained inclusions at 403-404', 414-418.5'; quartz vein at 404'-404.5'.						
424'	435'	Porphyritic diorite with specks of sulphides all through.						
435'	445'	Granitic gneiss, local porphyritic in dark, fine-grained part.						
445'	457.5'	Fine and medium-grained grey diorite.						
457.5'	480.5'	Pink granite.						

DIAMOND DRILL RECORD

Hole No. **3.** Sheet No. **1**

Property **Globe Exploration & Mining Co. Ltd.,**

Drill North

Location **Claim F71145, Line 15W., 400 ft. North of Base Line, at -45°
Massey Twp., Ont.**

-50° at 480'

Latitude

Departure

Bearing

Total Footage **512**

Elev. Collar

Datum

Date Started **April 10th, 1965.**

Date Completed **April 22nd, 1965.**

Drilled by **Bradley Bros. Ltd., Noranda, P.Q.**

Logged by **S. S. Szeta**

Footage		Formation	Sample Number	Sample Footage	Sample Width	Gold Sample	Gold Sludge	Remarks
From	To							
0'	14'	Casing.						
14'	123'	Medium-grained, massive diorite.						
123'	128.5'	Fine-grained, border-phase diorite.						
128.5'	154.5'	Banded-greywacke.						
154.5'	166.6'	Fine-grained diorite, calcite along slips and local specks of sulphide.						
166.6'	188'	More or less banded-greywacke.						
188'	209'	Same, altered; in places; porphyritic at 200.6'-202'.						
209'	216.6'	Fine-grained diorite, shearing at 211'-212';						
		213' altered, with some biotite.						
216.6'	250.6'	More or less banded-greywacke;						
		249.5'-250.6' - mineralised.						
250.6'	258.2'	Medium-to-coarse-grained diorite.						
258.2'	263.6'	Silicified basic rock with minor streaks and disseminated pyrite.						
263.6'	277'	Altered grey diorite; 272'-272.6' - more sulphite (pyrite).						
277'	283'	Some sulphide in prophyroblastic diorite, local foliation of silicious material.						
283'	296'	Slightly foliated, slightly porphyritic and rhyolitic grano-diorite, with specks of garnet in places and disseminated pyrite.						
296'	322'	Fine and medium-grained sections of dark dioritic intrusive, with specks of pyrite; porphyroblastic in places. Porphyritic-quartz at 310'-310.6'.						

Date of Examination

S. S. Szeta

DIAMOND DRILL RECORD

Hole No. **3** Sheet No. **2**

Property **Globe Exploration & Mining Co. Ltd., Massey Twp. Drill North**
 Location **Claim P-70145, Line 15W., 430 ft. North of Base Line, at -45°**
-50° at 480'
 Dip _____
 Latitude _____
 Departure _____
 Bearing _____
 Total Footage **502**

Elev. Collar _____
 Datum _____
 Date Started **April 10th, 1965.**
 Date Completed **April 22nd, 1965.**
 Drilled by **Bradley Bros. Ltd., Noranda, P.Q.**
 Logged by **S. S. Szeu.**

Footage		Formation	Sample Number	Sample Footage	Sample Width	Gold Sample	Gold Sludge	Remarks
From	To							
322'	333.5'	Silicious grey, fine-grained dioritic rock with local streaks and blubs of pyrite and pyrrhotite, local porphyroblastic quartz, local calcareous slips with fine pyrite.						
333.5'	336.5'	Porphyroblastic, black dioritic rock with fine disseminated pyrrhotite.						
336.5'	356'	Fine-grained, grey granite, local fine sulphides, specks of chalcopyrite. Partly fine-grained hornblende granite and diorite; several short porphyritic sections.						
356'	364'	Fine-grained, dark-grey diorite, calcareous veinlets at 363.5'.						
364'	366.5'	Porphyritic and porphyroblastic diorite with feldspar phenocrysts and specks of pyrrhotite.						
366.5'	369'	Fine-grained diorite.						
369'	373'	Porphyroblastic diorite with black hornblende and wormy feldspar, specks of sulphides; quartz veinlets at 372'-373'.						
373'	384'	Fine-grained, black diorite, with about 50% wormy feldspars. Porphyroblastic, in places.						
384'	389'	Silicious grey rock (diorite?); heavy pyrrhotite from 385.8'-387.8'; micaceous from 387.8'-389'.						
389'	411.5'	More or less silicious grey rock (diorite?), with local porphyroblasts of feldspar. Streaks of pyrrhotite and disseminated pyrrhotite, minor pyrite at: 390.2'-390.8'; 391'-392'; 402'-402.8'; 405.8'-406'. heavy pyrrhotite at: 411.0'-411.2'.						
411.5'	422'	Fine-to-medium-grained gabbro, with a few pegmatitic veinlets.						

Date of Examination _____

S. S. Szeu

GLOBE EXPLORATION & MINING CO. LTD.

Claim No. P-70145, Massey Twp.

Ontario.

D. D. H. No. 3.

Sample No.	Footage Drilled	Formation	Remarks
(1)	249.5'-250.6'	Fine pyrite, disseminated heavily in banded greywacke, minor pyrrhotite, specks of chalcopyrite.	Assay for gold.
(2)	258.2'-263.6'	Streak and disseminating strong-to-weak pyrrhotite, minor pyrite in porphyroblastic rock.	Assay for nickel and gold.
(3)	277' - 283'	Streak and disseminating strong-to-weak pyrrhotite, minor pyrite in porphyroblastic diorite.	Assay for nickel and gold.
(4)	385.8'-387.8'	Streak and disseminating strong-to-weak pyrrhotite, minor pyrite in porphyroblastic and rhyolitic granodiorite, plus some visible copper.	Assay for nickel, gold and copper.

SLS Sutherland

(322) 777

LEGEND

- Claim post and claim boundary.
- Higher ground.
- Swamp.
- Magnetic control station.
- Picket line cut and chained.
- Magnetic readings obtained and plotted at the east side of picket line.
- Magnetic contour.
- Below 0 gamma.
- 0 - 300 "
- 300 - 600 "
- 600 - 1000 "
- 1000 - 2000 "
- Above 2000 gammas.

- Electromagnetic readings observed by using a Ronko Mark IV Unit with a 200 ft. cable at station of receiver.
- In-phase readings plotted at west, out-of-phase readings plotted at east side of picket line.
- Scale of profile: 1/10" = 1% of phase change.
- Direction of traverse, receiver leading.
- Electromagnetic Conductor.
- Proposed diamond drill hole (completed April 1965).
- Inferred faults.



GEOLOGICAL SURVEY DATA ON IO-CLAIM PROPERTY

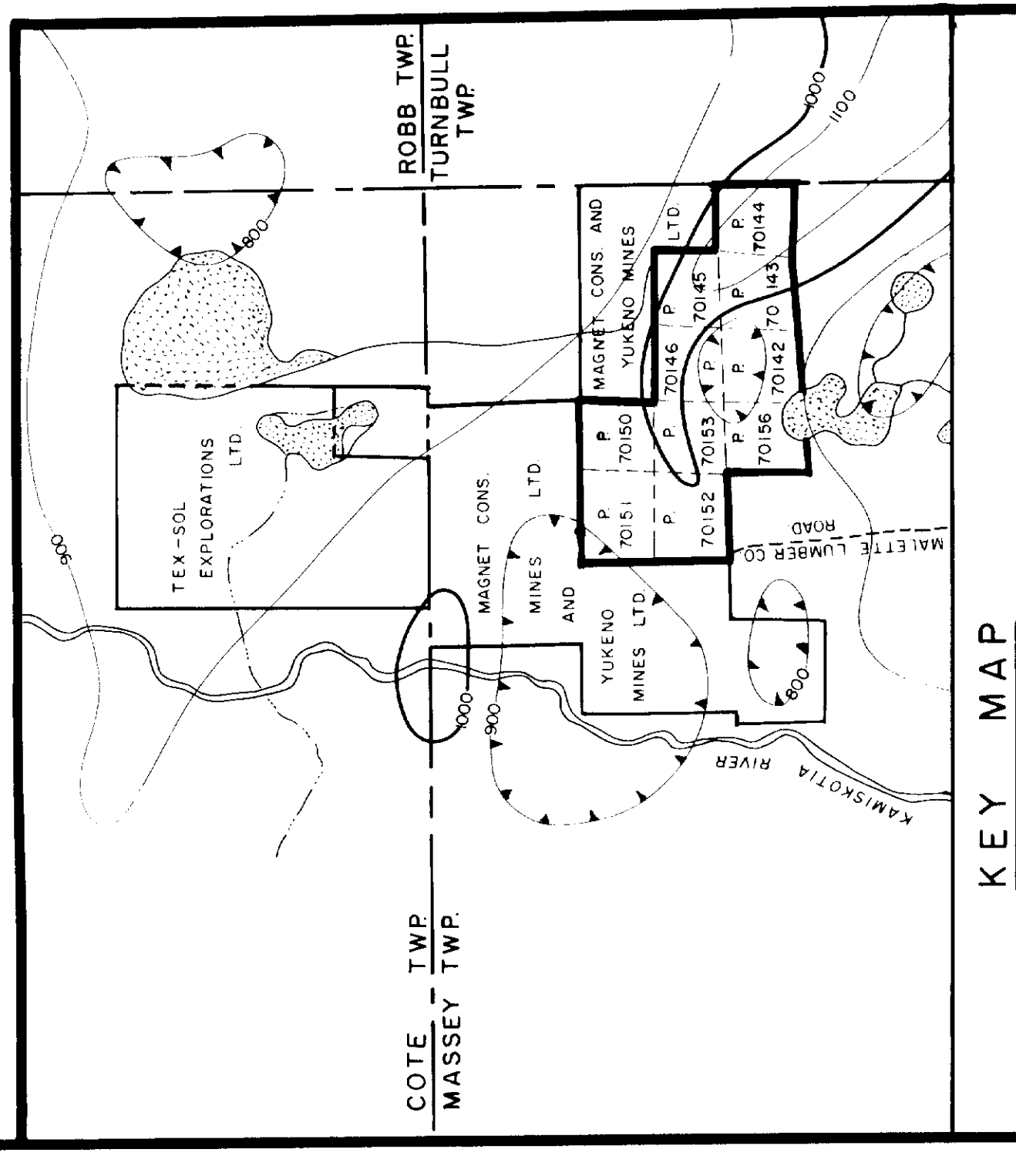
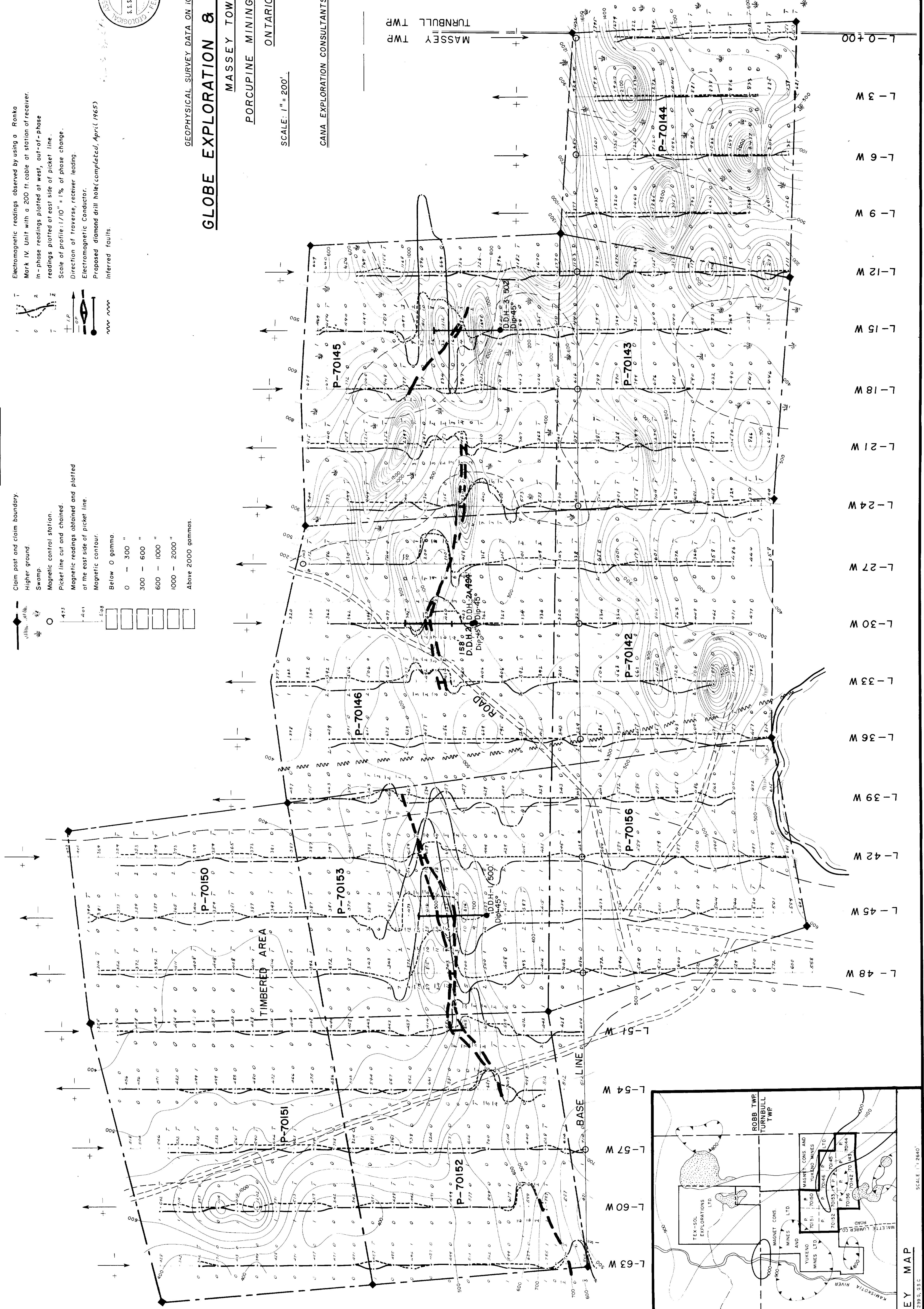
GLOBE EXPLORATION & MINING CO. LTD.

MASSEY TOWNSHIP,
PORCUPINE MINING DIVISION
ONTARIO

SCALE: 1" = 200'

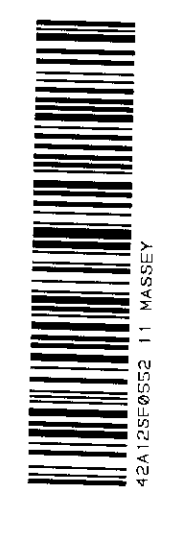
FEBRUARY, 1965.

CANA EXPLORATION CONSULTANTS LIMITED.



KEY MAP

SCALE 1" = 2000'



2000