

2.22004

DIAMOND DRILL CORE LOG-SUMMARY SHEET

Project: Steep Lake - Godfrey Twp PN 8147  
Date: July 14 to 17, 2001  
Logged by: Robert Calhoun  
Drilling Co: Colbert Drilling

DDH: EGG51-26

Claim Number: P410464 (P27829)

COLLAR LOCATION:

SURVEYS: none

UTM COORDINATES

GRID COORDINATES

	<u>Depth</u>	<u>Azimuth</u>	<u>Dip</u>
Setup:	0.0	00°	-45°

Northing: 5372857  
Easting: 457366  
Elevation: 0.0 meters  
TD: 87.0 meters

**DRILLING DATES**

Started: July 14, 2001  
Finished: July 17, 2001



2. 290 04

DIAMOND DRILL SUMMARY LOG

Project: Steep Lake - Godfrey Twp. PN 8147  
 Date: July 14, 2001  
 Logged By: R. F. Calhoun

DDH: EGG51-26

GEOLOGIC SUMMARY

FROM		TO	DESCRIPTION	INTERVAL			SIGNIFICANT ASSAY AVERAGES				
(m)	(m)			From (m)	To (m)	Width (m)	Cu ppm	Zn ppm	Pb ppm	Ag g/t	Au ppb
0.0	1.3		Overburden, casing								
1.3	18.8		Mafic Volcanic								
18.8	39.1		Mafic Breccia								
39.1	44.6		Felsic Breccia								
44.6	54.55		Felsic Lapilli Tuff								
54.55	87.0		Mafic Volcanic								
	87.0		End of Hole								

COMMENTS

2. 220 04

# Diamond Drill Log

Property: Steep Lake - Godfrey Twp PN8147 Hole Number: EGG51-26Claim Number: P410464 (P27829)Location: UTM 457366E/5372857NFinal Depth: 87.0 metersLogged By: Robert CalhounAzimuth: 00°Dates Drilled: July 14-17, 2001Drilled By: Colbert DrillingDip: -45°Dates Logged: July 17-18, 2001Signature: 

## Assays

From	To	Description	Sample #	From	To	Length (meter)	Cu ppm	Zn ppm	Pb ppm	Ag g/ton	Au ppb
0.0	1.3	Overburden, casing									
1.3	18.8	Mafic Volcanic -fine grained, medium to dark green, massive with leucoxene and calcite grains in the matrix. Fractures are filled with calcite at various angles to the core ranging from 20° to 80° to core axis. Fillings are hair-like laminae to 3mm. The unit contains dominantly pyrite as fine disseminations local clusters and lesser fracture controlled laminae. There is local sphalerite/chalcopyrite, very minor as noted at 16.8-17.0m as a small veinlet of sphalerite and disseminated chalcopyrite grains less than 1mm in size.									
18.8	39.1	Mafic Breccia -this unit is composed of mainly fragments with little matrix generally but where present the matrix is dark green, chloritic. The unit is highly variable in colour due to alteration of fragments ranging from dark green to light grey to cream/buff coloured, sericitic. The fragments range from lapilli to probable block size, weakly stretched locally and sub-rounded, light grey, quartz phytic with dark grey quartz eyes. Sulfides, dominated by pyrite, are minor generally but locally can exceed 2-3% as disseminations, clusters and probable fracture controlled laminae, discontinuous. One section from 31.6-32.3m contains sphalerite/chalcopyrite as disseminations and two large	52844	31.6	32.3	0.7	667	270	NA	0.5	27

3173004

# Diamond Drill Log

Hole # EGG51-26

				Assays							
From	To	Description	Sample #	From	To	Length (meter)	Cu ppm	Zn ppm	Pb ppm	Ag g/ton	Au ppb
39.1	44.6	<p>clots of sphalerite with chalcopyrite clusters in the center. The lower section of the unit from 36.0-39.1m has an increase in cream/buff coloured fragments with chlorite surrounding them. This makes the designation of the contact difficult.</p> <p><b>Felsic Breccia</b> -fine grained, medium grey green matrix with local chlorite. There are cream/buff coloured sericitic fragments comprising the bulk of the unit. This unit is similar to the lower contact zone of the previous unit. This unit has sulfides dominantly pyrite as fine disseminations, minor clusters. The pyrite is ubiquitous, 2-3%. Disseminations are very fine to &lt;1mm in size.</p>									
44.6	54.55	<p><b>Felsic Lapilli Tuff</b> -fine grained, medium grey matrix with lesser cream/buff sericitic sections. The matrix has lapilli of the following types: sub-rounded quartz porphyritic, medium grey to light grey lapilli to 3-4cm, smaller light grey sub-rounded to angular and lesser pale cream grey variably sized angular to weakly stretched noted to 3cm in size. The main feature of this unit is the dramatic increase in pyrite content. The matrix of the tuff also has abundant quartz phenocrysts to eyes. The pyrite in the unit is 8-10% overall and locally is 25-30%. The pyrite occurs as fine disseminations, discontinuous laminae to veinlets and cluster inter-growths. Occasionally the clusters are comprised of coarse cubes</p> <p>44.6-47.7m - 5-8% pyrite 47.7-48.6m - 20-25% pyrite as cluster inter-growths. 48.6-52.1m - 10-15% pyrite. Locally the pyrite has dusty brownish colouration which may indicate fine sphalerite disseminations. No chalcopyrite noted. Felsic to 54.55m. 52.1-54.55m - pyrite 3-5% disseminated, minor cubes. Local clusters Lower contact is at 43° to core axis.</p>	52845 52846 52847 52848 52849	46.2 47.7 48.6 50.1 51.1	47.7 48.6 50.1 51.1 52.1	1.5 0.9 1.5 1.0 1.0	45 36 61 66 59	102 69 95 103 101	NA NA NA NA NA	0.4 1.4 0.3 0.4 0.3	5 46 19 2 nil

2. 220 04

## Diamond Drill Log

Hole # EGG51-26

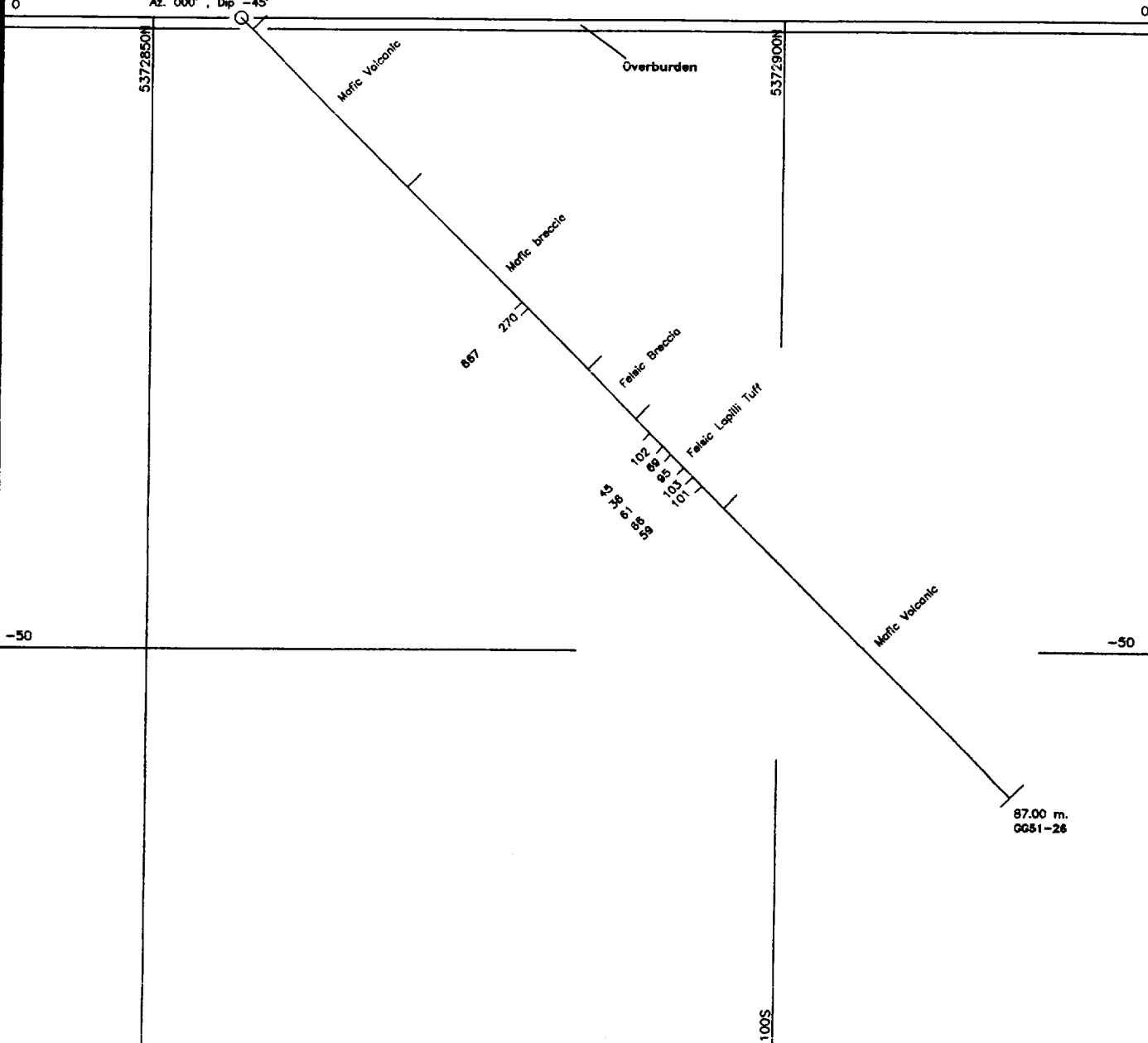
							Assays				
From	To	Description	Sample #	From	To	Length (meter)	Cu ppm	Zn ppm	Pb ppm	Ag g/ton	Au ppb
54.55	87.0	<p>Mafic volcanic -fine grained, medium green to grey green. Unit begins as laminated flow with small section of pillowed volcanics to massive mafic flow. Internal contacts are at 50° to core axis as at 57.7m. The massive mafic contact has pyrite 1-3% as disseminations and fine laminae with smaller local sections of 5-8 % as discontinuous veinlets, clusters and disseminations. The more abundant sulfides are associated with disrupted sections, hyaloclastic sections and bleached veined areas. Calcite is as small veinlets, fracture controlled at various core angles from 10° to 80°. Pyrrhotite is minor towards end of the hole. 70.2-77.5m - flow structures with veining and possible auto-breccia with a fragmental section from 75.6-77.5m.</p> <p>87.0 End of Hole</p> <p>No Acid tests</p>									

Az. 000°

P 410464

# 2. 220 04

GG51-26  
457366E, 5372657N  
Az. 000°, Dip -45°



<b>EXPLORERS ALLIANCE CORPORATION</b>			
Exploration		Timmins, ONTARIO	
<b>STEEP LAKE PROJECT</b>			
GODFREY TOWNSHIP			
<b>SECTION 457366 E</b>			
<b>DDH GG51-26</b>			
Assays Cu ppm, Zn ppm			
TRACED:	DATE:	NTS: 42-A/12 & 05	PROJECT: 8147
DRAWN: del DRAFTING	DATE: 26/08/2001	MAP No:	FILE: GG5126
SUPERVISED: R Colthoun	DATE: 27/08/2001	SCALE 1: 500 (metres)	
REVISED:	DATE:	0 10 20 30 40 50	

## Work Report Summary

Transaction No: W0160.30655 Status: APPROVED  
 Recording Date: 2001-SEP-04 Work Done from: 2001-JUL-14  
 Approval Date: 2001-OCT-19 to: 2001-JUL-17

Client(s):

130679 FALCONBRIDGE LIMITED  
 146892 HUOT, JOHN PETER

Survey Type(s):

ASSAY PDRILL

Work Report Details:

Claim#	Perform	Perform Approve	Applied	Applied Approve	Assign	Assign Approve	Reserve	Reserve Approve	Due Date
G 6000333	\$4,963	\$4,963	\$0	\$0	\$4,800	4,800	\$163	\$163	
P 1201465	\$0	\$0	\$1,200	\$1,200	\$0	0	\$0	\$0	2002-SEP-01
P 1204734	\$0	\$0	\$400	\$400	\$0	0	\$0	\$0	2002-SEP-01
P 1207545	\$0	\$0	\$3,200	\$3,200	\$0	0	\$0	\$0	2002-SEP-01
	\$4,963	\$4,963	\$4,800	\$4,800	\$4,800	\$4,800	\$163	\$163	

Status of claim is based on information currently on record.



42A12SE2018 2.22004 GODFREY

900

Date: 2001-OCT-22

GEOSCIENCE ASSESSMENT OFFICE  
933 RAMSEY LAKE ROAD, 6th FLOOR  
SUDBURY, ONTARIO  
P3E 6B5

FALCONBRIDGE LIMITED  
SUITE 1200, 95 WELLINGTON STREET WEST  
TORONTO, ONTARIO  
M5J 2V4 CANADA

Tel: (888) 415-9845  
Fax: (877) 670-1555

**Submission Number:** 2.22004  
**Transaction Number(s):** W0160.30655

Dear Sir or Madam

**Subject: Approval of Assessment Work**

We have approved your Assessment Work Submission with the above noted Transaction Number(s). The attached Work Report Summary indicates the results of the approval.

At the discretion of the Ministry, the assessment work performed on the mining lands noted in this work report may be subject to inspection and/or investigation at any time.

If you have any question regarding this correspondence, please contact JIM MCAULEY by email at james.mcauley@ndm.gov.on.ca or by phone at (705) 670-5855.

Yours Sincerely,



Ron Gashinski  
Supervisor, Geoscience Assessment Office

**Cc:** Resident Geologist

Falconbridge Limited  
(Claim Holder)

John Peter Huot  
(Claim Holder)

Assessment File Library

Falconbridge Limited  
(Assessment Office)

Lionel Bonhomme  
(Agent)





# MINING LAND TENURE MAP

Date / Time of Issue Sep 11 2001 10:22h Eastern  
TOWNSHIP / AREA GODFREY PLAN G-3991

ADMINISTRATIVE DISTRICTS / DIVISIONS  
Mining Division Porcupine  
Land Titles/Registry Division COCHRANE  
Ministry of Natural Resources District TIMMINS

### TOPOGRAPHIC

- Approximate Boundaries
- Township
- Concession, Lot
- Private Park
- Iron Reserve
- City and File
- Control - Aerial Aerial Photograph
- Sheet
- Mine Features
- Roadway
- Road
- Trail
- Natural Gas Pipeline
- Hydro Line
- Control Conduit
- Wooded Area
- Watercourse / Natural / Artificial / Dam / Canal

### LAND TENURE

- Feehold Patent
  - Surface And Mining Rights
  - Surface Rights Only
  - Mining Rights Only
- Leasehold Patent
  - Surface And Mining Rights
  - Surface Rights Only
  - Mining Rights Only
- Licence of Occupation
  - Surface And Mining Rights
  - Surface Rights Only
  - Mining Rights Only
- Land Use Permit
- Growth Conclude
- Water Power Lease Agreement
- Mining Claim

### LAND TENURE WITHDRAWALS

- Area Withdrawn from Operation
  - When: Surface Rights Only
  - When: Surface Rights Only, Mining Rights Only
  - When: Surface Rights Only, Mining Rights Only, Water Power Lease Agreement
  - When: Mining Rights Only

### IMPORTANT NOTICES

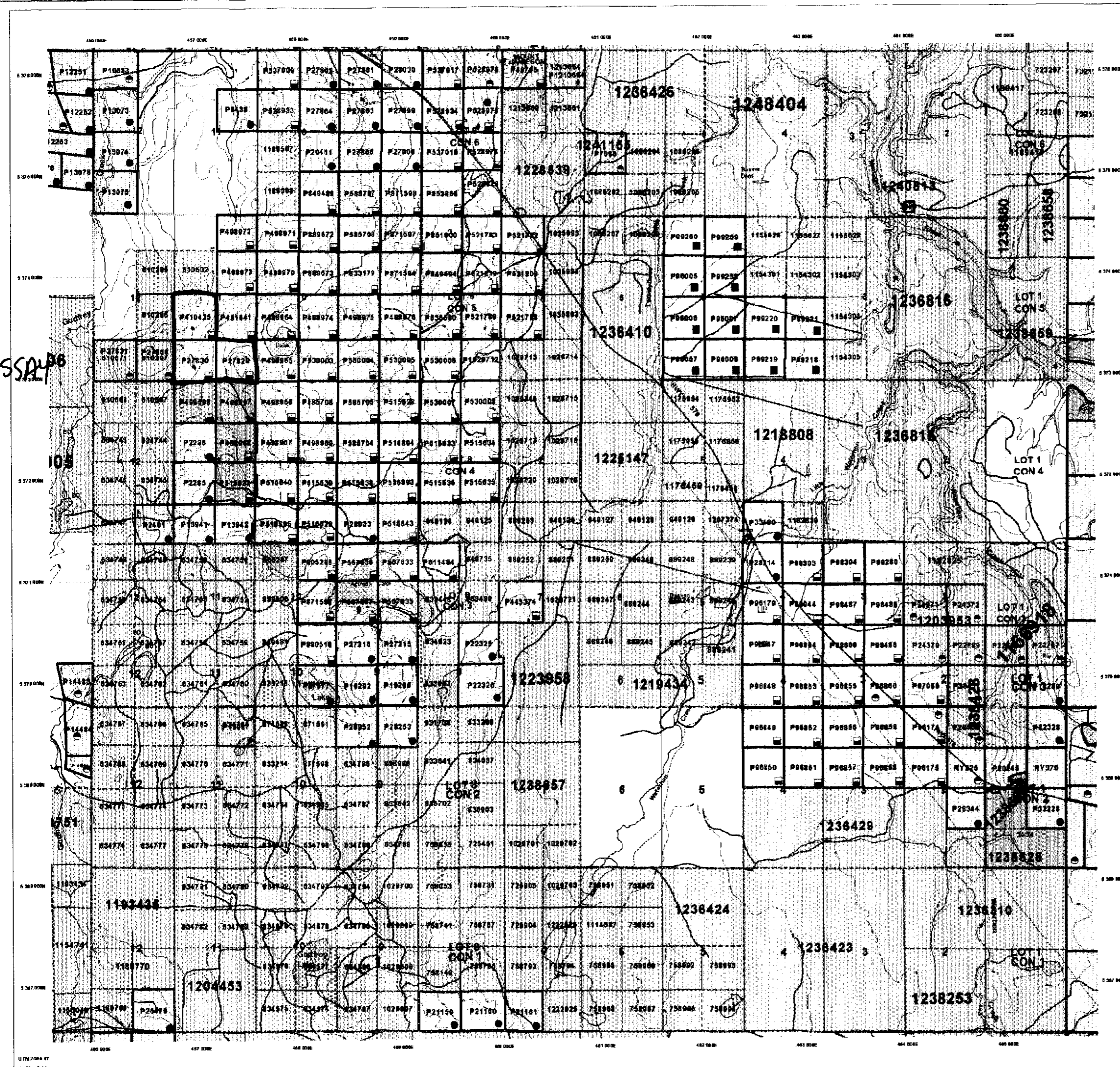


### LAND TENURE WITHDRAWAL DESCRIPTIONS

Location	Type	Date	Description
2242	Water	Jan 1 2001	THARPER'S CLAIM BILL
2242	Water	Jan 1 2001	FLOODING RIGHTS ON FITTER SIDE OF THE WATGAMMERS TO THE P.C.
2242	Water	Jan 1 2001	RESERVED FOR RECREATIONAL PURPOSES UNDER P.L.A. FILE 108542
1074	Water	Jan 1 2001	PENDING APPLICATION UNDER THE PUBLIC LANDS ACT NOTICE RECEIVED BY NOV 22 SEE LAND ROLL FILE FOR DETAILS
1075	Water	Jan 1 2001	RESERVED FOR RECREATIONAL PURPOSES UNDER P.L.A. FILE 108542
1076	Water	Jan 1 2001	PENDING APPLICATION UNDER THE PUBLIC LANDS ACT NOTICE RECEIVED BY NOV 22 SEE LAND ROLL FILE FOR DETAILS
1077	Water	Jan 1 2001	RESERVED FOR RECREATIONAL PURPOSES UNDER P.L.A. FILE 108542
1078	Water	Jan 1 2001	RESERVED FOR RECREATIONAL PURPOSES UNDER P.L.A. FILE 108542

### IMPORTANT NOTICES

Areas which subject to withdrawal, limitations or conditions associated with mineral prospecting, mining and mineral development activities.



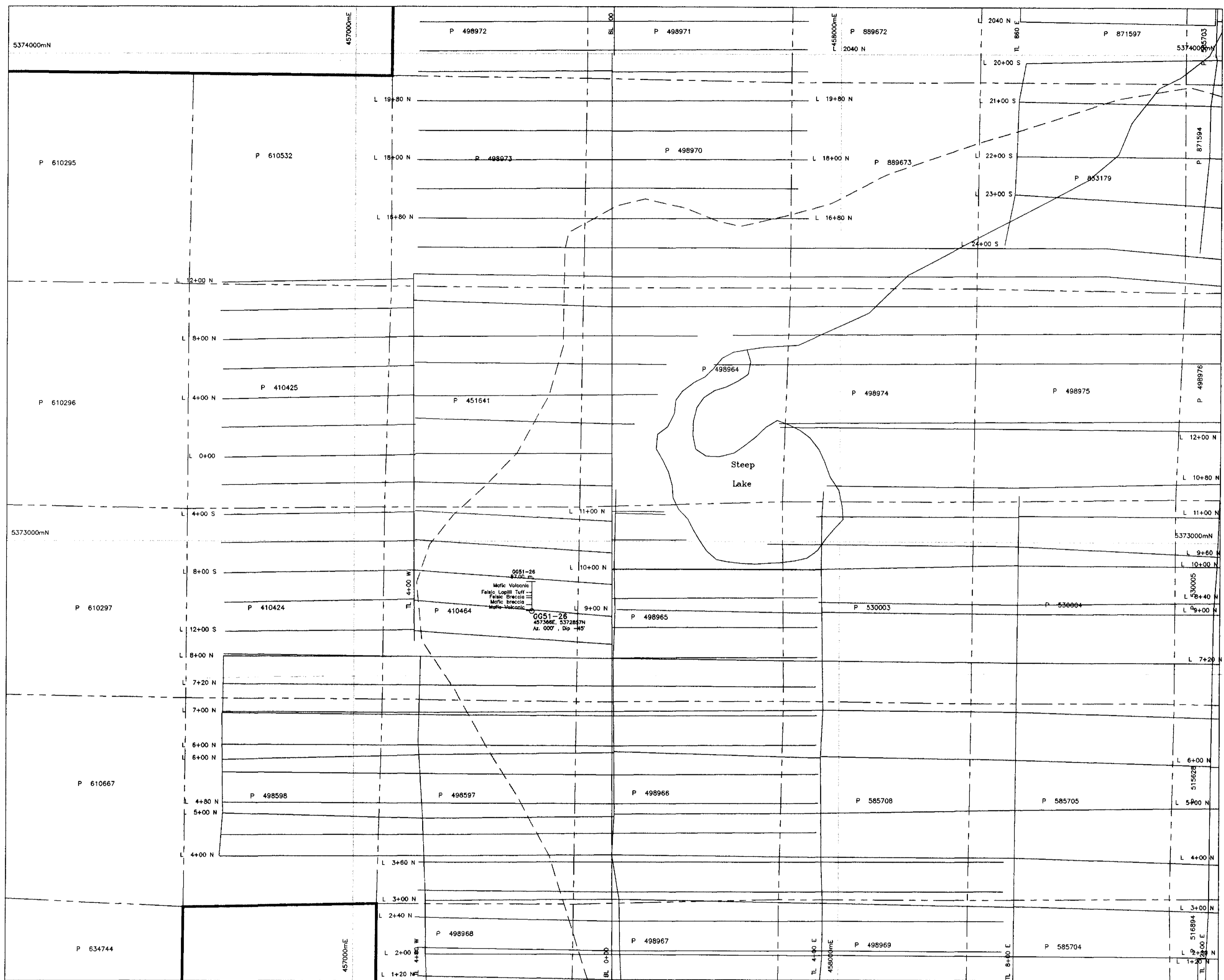
2.22.004  
PDRILL, ASSAY

42A12SE2018 2.22004 GODFREY 200

### General Information and Limitations

Copyright © 2001  
Provincial Mining Recordation Office  
Ministry of Northern Development and Mines  
1000 Main Street, Suite 1000  
Timmins, Ontario P4R 1A6  
Tel: (705) 852-1000  
Fax: (705) 852-1001  
E-mail: info@mining.gov.on.ca

This map is a reproduction of the original map and does not constitute a warranty of accuracy. The Province of Ontario is not responsible for any errors or omissions in this map. The Province of Ontario is not responsible for any errors or omissions in this map. The Province of Ontario is not responsible for any errors or omissions in this map.



EXPLORERS ALLIANCE CORPORATION			
Exploration		Timmins, ONTARIO	
STEEP LAKE PROJECT GODFREY Twp.			
<b>DIAMOND DRILL HOLES PLAN</b> <b>GG51-26</b>			
TRACED:	DATE:	NTS: 42-A/12 & 05	PROJECT:
DRAWN: del DRAFTING	DATE: 22/06/2001	MAP No:	FILE: STEEPLKE
SUPERVISED: R Colhoun	DATE: 22/06/2001	SCALE: 1:5000 (metres)	
REVISED: del DRAFTING	DATE: 28/08/2001		