



42A13NW0008 14 FORD

010

Diamond Drilling

Township of FORD

Report NO: 14

Work performed by: MIDRAY MINERALS LIMITED

Claim NO	Hole NO	Footage	Date	Note
P 77711	64-1	522'	Nov/64	
P 77714	64-2	358'	Nov/64	
	64-3	202'	Dec/64	
	64-4	405'	Dec/64	

Notes:

P 77713

P 77715

MIDRAY MINERALS LTD.

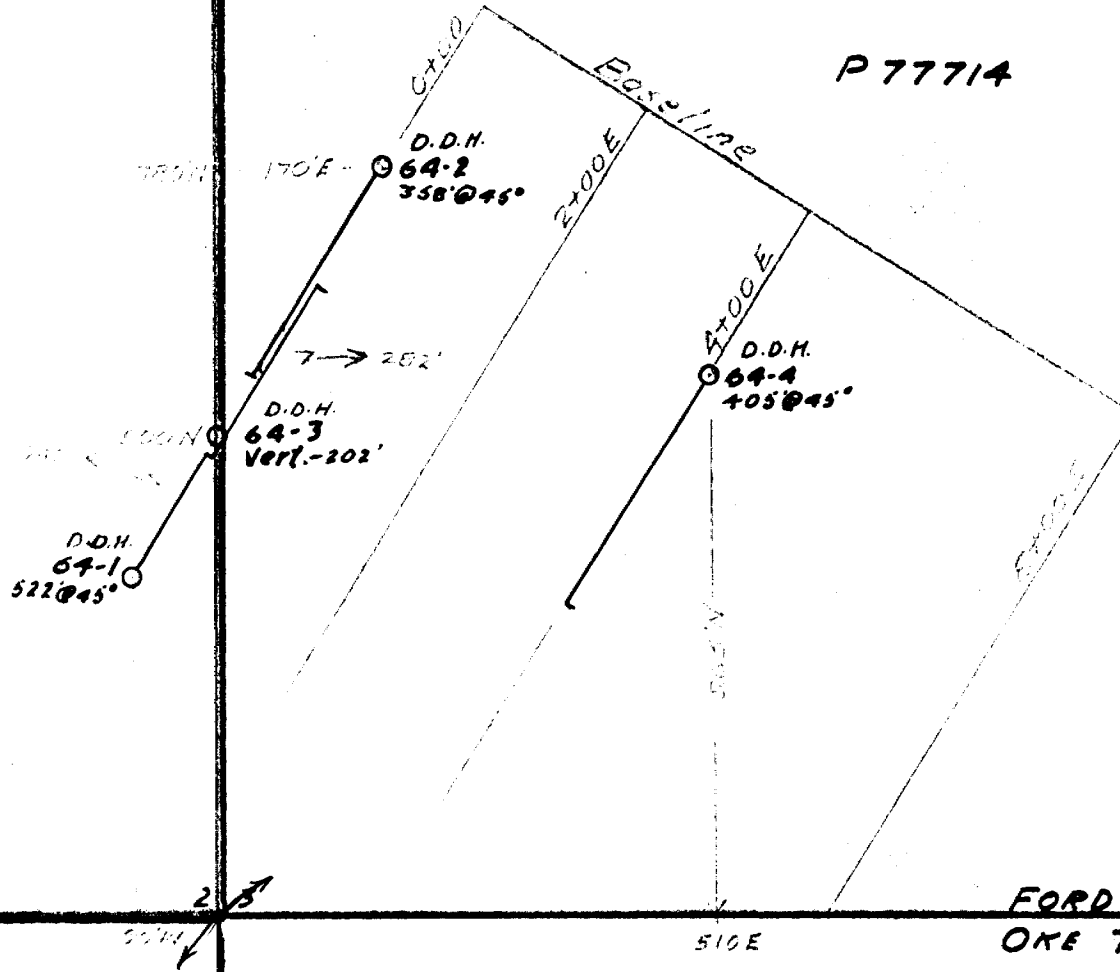
FORD TWP.

PORUPINE MINING DIV.

Scale 1" = 200'

P 77711

P 77714



S126961

FORD TWP  
OKT TWP.

# DIAMOND DRILL RECORD

PROPERTY

Midray Minerals Ltd.

HOLE NO. 64-3

SHEET NUMBER 1

SECTION FROM \_\_\_\_\_ TO \_\_\_\_\_

STARTED Dec. 2/64

LATIT DE Line 0+00E-5+25 S.

DATUM \_\_\_\_\_

COMPLETED Dec. 5/64

DEPARTURE \_\_\_\_\_

BEARING \_\_\_\_\_

ULTIMATE DEPTH 202'

ELEVATION \_\_\_\_\_

DIP Vert.

PROPOSED DEPTH \_\_\_\_\_

DEPTH FEET	FORMATION	SAMPLE NO.	WIDTH OF SAMPLE	GOLD \$	AG	NI
0.0	74.0 Casing					
	84.0 Rhlolite - f.gr.,gy., med. dissem po.,py.					
	74 - 79	3109	5.0	0.001	0.6	Nil
	79 - 84	3110	5.0	0.001	Nil	0.03
105.2	Diorite - med.gr.,gnish., med. chlor. med.shrg.,loc.med.py., c/a 45°					
114.0	Diorite - f.med.gr.,gy.,med.py.-105.2-109.0	3111	3.8	Nil	0.2	0.03
	109.0-114.0	3112	5.0	Nil	0.8	0.05
132.3	Diorite - med.gr.,gnish.,med.chlor.,med.shrg. wk.med.py.,dissem & in blebs,c/a 45°					
136.4	Diorite - str.alt.,str.,py.po.-contact @ 30°	3113	4.1	Nil	1.0	0.12
162.7	Diorite - f.-med.gr., str.silic.,loc.wk. py.					
189.0	Diorite - med.gr.,gnish.,med.chlor.,med.shg.wk.py.					
196.0	Andesite - f.gr.,gy.,str.silic.,wk.f.py.					
201.0	Diorite - med.gr.,gnish.,med.chlor.,med.shrg. c/a 45°					
202.0	Andesite - f.gr.,gy.,str.silic.,wk.fr, py.					
	202.0' - End of Hole					

DRILLED BY \_\_\_\_\_

SIGNED

*[Signature]*

# DIAMOND DRILL RECORD

P. 77711

PROPERTY Midray Minerals Ltd.  
(Ford Twp.)

HOLE NO. 64-1

SHEET NUMBER 1

SECTION FROM \_\_\_\_\_ TO \_\_\_\_\_

STARTED No. v 22, 1964

LATITUDE Line 0+00-7+00 S

DATUM \_\_\_\_\_

COMPLETED Nov. 27, 1964

DEPARTURE \_\_\_\_\_

BEARING N 32° E

ULTIMATE DEPTH 522'

ELEVATION \_\_\_\_\_

DIP 45°

PROPOSED DEPTH \_\_\_\_\_

DEPTH FEET	FORMATION	SAMPLE NO.	WIDTH OF SAMPLE	GOLD \$	SLUDGE GOLD \$
0.0 - 118.0	Casing - 0-6- Muskeg 6-115- clay & sand - few boulders 115-118- Bedrock				
134.0	Diorite - f.med.gr., gnish., shrd., str.chlor. phlog., v.wk.py., c/a 35° - 45°				
137.0	Andesite- f.gr., gy., str.carb., c/a on shrg., - 30° - 45°				
161.5	Diorite - f.med.gr., gnish., str.chlor. shrd., v.wk. py.				
165.0	Andesite- gy., f.gr., siliceous, Qtz., strgrs. some chlor., med. py.				
169.6	Bed's? - f.gr., gy., silic., wk.f.py., tuffaceous c/a 20°				
208.2	Diorite - f.med.gr., gnish., str., chlor., med. shrg., loc. wk. py.				
218.0	Quartz - gy., impure, shrd., strgrs., chlor., occ. f. strgr., py., c/a 30°				
225.0	Diorite - f.med.gr., gnish., str. chlor., wk.py., wk. shrg.				
239.2	Andesite- f.gr., gy., str.sil., wk. to med. f.py. c/a 30° - 45°				

# DIAMOND DRILL RECORD

PROPERTY Midray Minerals Limited  
(Ford Twp.)

HOLE NO. 64-1

SHEET NUMBER 2 SECTION FROM \_\_\_\_\_ TO \_\_\_\_\_ STARTED \_\_\_\_\_  
 LATITUDE \_\_\_\_\_ DATUM \_\_\_\_\_ COMPLETED \_\_\_\_\_  
 DEPARTURE \_\_\_\_\_ BEARING \_\_\_\_\_ ULTIMATE DEPTH \_\_\_\_\_  
 ELEVATION \_\_\_\_\_ DIP \_\_\_\_\_ PROPOSED DEPTH \_\_\_\_\_

DEPTH FEET	FORMATION	SAMPLE NO	WIDTH OF SAMPLE	GOLD \$	SLUDGE GOLD \$
239.2 - 252.0	Diorite - f.med.gr., gnish., str.chlor., wk.py., wk. shrg.				
268.0	Andesite-gy., f.gr., str.silic., shrd., loc. med. py.				
522.0	Diorite -f.med.gr., gnish., str.-med.chlor. consid. brown phlog., highly silic. sections 255' - 287' ltd.gy., highly alt., soft, mag. section 322 - 334				
522' - End of Hole					
Dip					
Read Corr.					
Gollar                      45°					
200'                      50½°      43½°					
400'                      48°        41°					

DRILLED BY \_\_\_\_\_

SIGNED \_\_\_\_\_



# DIAMOND DRILL RECORD

PROPERTY Midray Minerals Ltd.

HOLE NO. 64.2

SHEET NUMBER 1

SECTION FROM \_\_\_\_\_ TO \_\_\_\_\_

STARTED Nov. 28, 1964

LATITUDE Line 0+00 E - 2+00 S

DATUM \_\_\_\_\_

COMPLETED Dec. 1, 1964

DEPARTURE \_\_\_\_\_

BEARING S 32 W

ULTIMATE DEPTH 358

ELEVATION \_\_\_\_\_

DIP 45°

PROPOSED DEPTH \_\_\_\_\_

DEPTH FEET	FORMATION	SAMPLE NO.	WIDTH OF SAMPLE	GOLD \$	<del>YEL MORE GOLD \$</del> Silver	CU	NI
0.0 - 84.0	Casing						
103.0	Diorite - f.med.gr.,gnish.,wk.shrg.,str. chlor.,occ.bleb wh.qtz.,wk.loc.py., med. garnet						
112.0	And. - f.gr.,gy.,wk.py., wk. garnet						
230.0	Diorite - med.gr.,gnish., med. chlor.,wk. shrg., wk.py. with med.loc.py.,occ.bleb.wh. qtz.,patchy silic.,some garnet						
231.2	" - str.chlor. - 15% py., po.	3103	1.2	nil	nil	--	nil
236.0	" - blueish alt., wk. shrg., some garnets - wk., py., c/a 45°	.					
238.5	" - str.,chlor. alt.,str.shrg. @ 45° med. py. po.	3104	2.5	nil	nil	--	TR
242.2	" - f.med.gr.,gnish., med. chlor., wk. py.,some garnets						
244.0	" - med.gr., str.chlor.alt.,med. py. po.,some garnets	3105	2.2	nil	nil	--	nil
246.0	" - med.gr.,gnish., med. chlor., wk. shrg., garnets						
250.5	" - g.g.,gnish.,med.silic.,str. po., wk.shrg., c/a 80°	3106	4.5	nil	nil	---	nil

DRILLED BY \_\_\_\_\_

SIGNED \_\_\_\_\_

# DIAMOND DRILL RECORD

PROPERTY Midray Minerals Limited HOLE NO. 64-2

SHEET NUMBER 2 SECTION FROM \_\_\_\_\_ TO \_\_\_\_\_ STARTED \_\_\_\_\_  
 LATITUDE \_\_\_\_\_ DATUM \_\_\_\_\_ COMPLETED \_\_\_\_\_  
 DEPARTMENT \_\_\_\_\_ BEARING \_\_\_\_\_ ULTIMATE DEPTH \_\_\_\_\_  
 ELEVATION \_\_\_\_\_ DIP \_\_\_\_\_ PROPOSED DEPTH \_\_\_\_\_

DEPTH FEET	FORMATION	SAMPLE NO.	WIDTH OF SAMPLE	GOLD \$	SILVER \$	CU	NI
250.5 - 268.0	Diorite - f.gr., gnish., wk. chlor., wk. garnets, wk. py.po.						
272.0	" - f.gr., med. chlor., str. silic., med. str. po. py., wk. cp., c/a shrg. 80°	3107	4.0	nil	nil	nil	nil
277.0	" - As above - no cp.	3108	5.0	nil	nil	0.08	TR
318.0	Gabbro - (Anorthositic) C. gr., gn. & wh., shrd., fragmental, talcose						
358.0	Diorite - f. med. gr., gnish., med. chlor.						
358.0 - End of Hole							

DRILLED BY \_\_\_\_\_

SIGNED *R. J. Bennett*

# DIAMOND DRILL RECORD

PROPERTY Midray Minerals Ltd.

HOLE NO. 64-4

SHEET NUMBER 1

SECTION FROM \_\_\_\_\_ TO \_\_\_\_\_

STARTED Dec. 7/64

LATITUDE Line 4 + 00 E-2-00 S

DATUM \_\_\_\_\_

COMPLETED Dec. 12/64

DEPARTURE \_\_\_\_\_

BEARING 532° W

ULTIMATE DEPTH 405'

ELEVATION \_\_\_\_\_

DIP 45°

PROPOSED DEPTH \_\_\_\_\_

DEPTH FEET	FORMATION	SAMPLE NO.	WIDTH OF SAMPLE	GOLD \$	SLUDGE GOLD \$
0.0 - 97.0	Casing				
134.0	Adesite - f.-med.gr., gy., occ. strgr. wh. qtz.				
143.0	Diorite - gnish., str. chlor. alt., talcose - magnetic				
152.5	Andesite - f.gr., gy., str. silic. & carb. altalt., Brown phlog.				
153.0	Basalt - f.gr., v. dark, no alt.				
158.0	Diorite - gnish - talcose				
162.5	Diorite - med.gr., gnish., med. shrg.				
182.0	Andesite - lt.gy., talcose str. loc. silic. & carb. alt.				
280.0	Andesite - med.gr., gy., locally talcose				
350.0	Gabbro - med.gr., wk. to med. chlor. alt.				
405.0	Andesite? - f.-med.gr.gy.				
	405' - End of Hole				

DRILLED BY \_\_\_\_\_

SIGNED \_\_\_\_\_

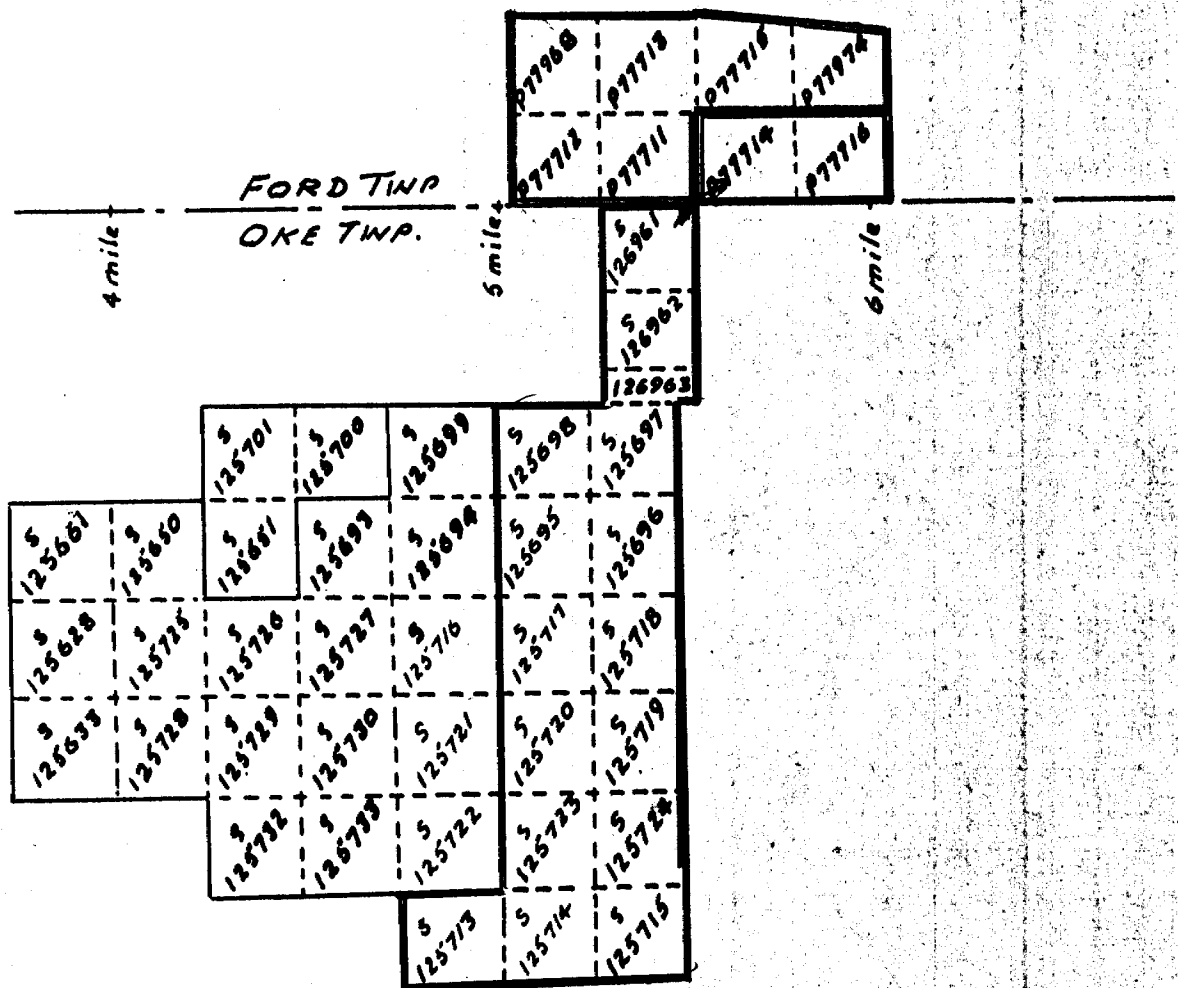
*[Handwritten Signature]*





42A13NW0008 14 FORD

900



KEY MAP ACCOMPANYING  
 ASSESS. WORK REPORTS  
MIDRAY MINERALS LTD.

CLAIMS  
 FORD & OKE TOWNSHIPS

Scale: 1" = 40 chs