



42A13NW0051 13 LAIDLAW

010

Diamond Drilling

Township of Laidlaw

Report N^o 13

Work performed by: Art O'Donnell

Claim N ^o	Hole N ^o	Footage	Date	Note
P 75763	7	322'	July/66	

Notes:

DIAMOND DRILL RECORD

<u>Property</u>	: - Laidlaw Twp. (P-75763)	<u>Hole No.</u>	: - 7
<u>Location</u>	: - 108 W	<u>Sheet No.</u>	: - 1
<u>Latitude</u>	: - 18 + 30 B	<u>Date Started</u>	: - July 24, 1966
<u>Angle of Hole</u>	: - 50°	<u>Date Finished</u>	: - July 28, 1966
<u>Bearing</u>	: - 180° AST	<u>Depth of Hole</u>	: - 322'
<u>Drilled by</u>	: - Boyles Bros. (Quebec) Ltd.	<u>Logged by</u>	: - Art O'Donnell A. J. Damm H

0 - 212.0	Casing
212.0 - 217.0	Soapstone with sparse disseminated pyrrhotite.
217.0 - 217.5	Graphite. Could be conductor although narrow.
217.5 - 322.0	Soapstone - greyish white, soft with a greasy feeling, containing sparse fine grained disseminated pyrrhotite (Nickeliferous). The entire section is uniform however, it appears that there is more pyrrhotite mineralisation towards the end of the hole. To observe the mineralisation, it is generally necessary to use a mineral glass. est. 0.10% to 0.15% Nickel over entire core length.
	223.5 - 225.0 Coarse crystallized carbonate stringer.
322.0	END OF HOLE.

ASSAYS

<u>SAMPLE #</u>	<u>from</u>	<u>to</u>	<u>Width</u>	<u>AN</u>	<u>AR</u>	<u>CU</u>	<u>NI</u>	<u>Zn</u>
473	270.0	275.0	5.01'	N11	0.02	0.03	0.20	N11
474	225.0	235.0	10.0'	N11	0.03	0.02	0.14	N11
475	235.0	245.0	10.0'	N11	0.02	0.02	0.13	N11
476	245.0	255.0	10.0'	N11	Tr.	0.02	0.12	N11
477	315.0	317.5	2.5'	--	--	--	0.15	--

GROUND SURFACE.

18+25.5

108.W.

SURFACE LOCATION OF CONDUCTOR

(Astronomical)



GRAPHITE

Au - Ag - Cu - Ni - Zn Au - Ag - Cu - Ni - Zn

NIL TR 0.07 0.14 NIL NIL TR 0.07 0.14 NIL

VL 0.03 0.02 0.43 NIL 10.0

NIL 0.02 0.02 0.12 NIL 10.0

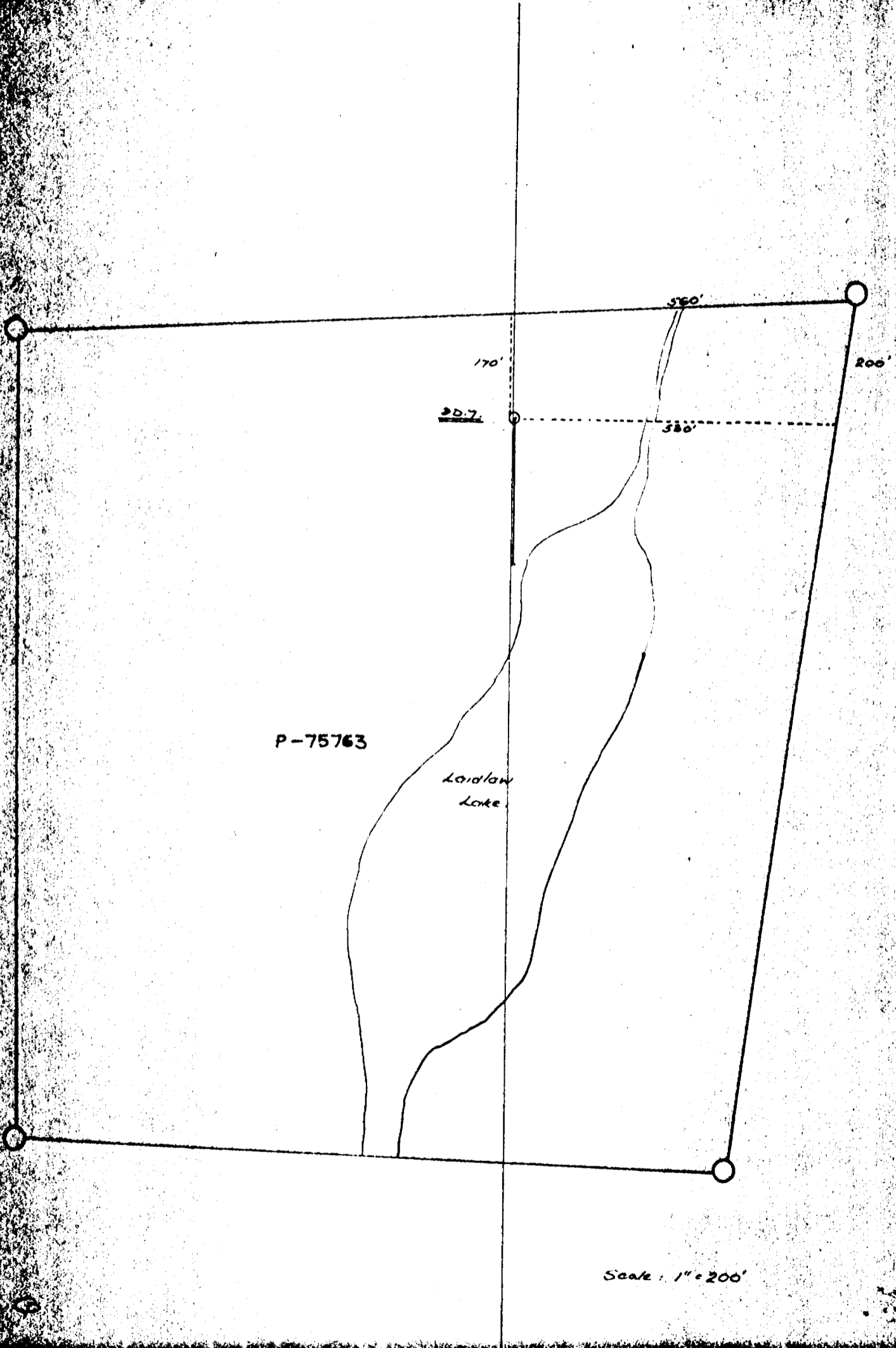
NIL 0.02 0.03 0.20 NIL 5.0

NIL 0.15 2.5

SCAPSTONE

P.75763
LADLAW TWP
D.D.H. #7
-50° 322.0'
Scale: 1" = 50.0'

4



Scale: 1" = 200'