

Diamond Drilling



42A13SE0019 16 GEARY

010

Township of GEARY

Report NO 16

Work performed by: Walter Foster

Claim NO	Hole NO	Footage	Date	Note
P 476770	CG-77-1B	522.0'	Sept/77	(1)
	CG-77-2	647.0'	Sept/77	(1)
	CG-77-4	451.0'	Oct/77	(1)
P 476769	CG-77-3	680.0'	Oct/77	(1)

2300'

Notes:

(1) #59-78

DIAMOND DRILL RECORD

NAME OF PROPERTY Geary - Young Dev. / Continental Copper
 HOLE NO. CG77-1B LENGTH 522"
 LOCATION L6W : 25+80S Geary Twp grid
 LATITUDE _____ DEPARTURE _____
 ELEVATION _____ AZIMUTH 0° DIP 60°
 STARTED Sept 13-77 FINISHED Sept 19-77

FOOTAGE	DIP	AZIMUTH	FOOTAGE	DIP	AZIMUTH
<u>collr</u>	<u>60°</u>	<u>0°</u>			
<u>300</u>	<u>57°</u>				
<u>500</u>	<u>47°</u>				

HOLE NO. CG77-1B SHEET NO. 1

REMARKS AQ

LOGGED BY L. G. Hobbs

FOOTAGE		DESCRIPTION	SAMPLE			ASSAYS				
FROM	TO		NO.	% SULPHIDES	FOOTAGE		%	%	OZ/TON	OZ/TON
					FROM	TO				
0	155	<u>Casing:</u>								
155	405.5	<u>Volcanics:</u> Rel. light colour. Highly carb. Section starts highly sheared. Numerous ϕ Calcite veins @ 45° often w. xlline py. + epidote (non conductive) @ 309' - Magnetite in a more basic section. @ 360-367 brown alteration (like siderite)			365	366	1.0			
405.5	425	<u>Sheared Volcanics:</u> Many ϕ veins often w. py. No conductor								
425	522	<u>Volcanics:</u> as above. carb'n in veins only.								
522	522	<u>End of hole</u>								
		<u>Lost core:</u> 158-158.6 197-199.1 161-163.5 202-203 166.5-170 203.5-204.5 172-173.5 174-175 176.5-178								

EM. 6-1168

LANGRIDGE LIMITED,

DIAMOND DRILL RECORD

NAME OF PROPERTY Geary - Young Dev. / Continental Copper
 HOLE NO. CG77-2 LENGTH 647
 LOCATION 12+20S, 8+60W Geary Trap grid
 LATITUDE _____ DEPARTURE _____
 ELEVATION _____ AZIMUTH 71° DIP 60°
 STARTED Sept 27-77 FINISHED Oct 1-77

FOOTAGE	DIP	AZIMUTH	FOOTAGE	DIP	AZIMUTH
collar	60°	71°			
250	52°				
527	57½°				

HOLE NO. CG77-2 SHEET NO. 1

REMARKS AQ

LOGGED BY L. G. Gibbs

FOOTAGE		DESCRIPTION	SAMPLE				ASSAYS			
FROM	TO		NO.	% SULPHIDES	FOOTAGE		%	%	OZ/TON	OZ/TON
					FROM	TO				
0	140.6	<u>Casing</u>								
140.6	198	<u>Diorite</u> : Grey, equigranular med-fine gr. massive. Felds laths in darker grey-green groundmass (chloritized). Shows slightly larger white skeletal xls (cubic). V. slight carb. Non magnetic. Cut by Q calc veins often w. Pyrr. + Cp + Py. Much less than 1% S in rock mass itself. @ 155.6 - 156.3 Bin Q vein + biotite Po, Cp. CA 245° @ 178.5 - 1 in same @ 181 - " "								
198	214	<u>Sheared Diorite</u> : More chloritic, softer, well carb. Darker. Shg @ 20°-30° @ 202 - 2" Q vein at 10° w minor Py Po hornite. @ 213.9 - 1" Q vein w Py. Cp.								
214	380.25	<u>Diorite</u> : as above @ 311 - 4" vein @ 35° containing black hard min. Tourmaline? Sphene? @ 328 - 2" ditto								

EM. 6-1168

LANGRIDGE LIMITED,

DIAMOND DRILL RECORD

NAME OF PROPERTY Geary - Young Dev. Continental Copper
 HOLE NO. CG 77-4 LENGTH 451
 LOCATION Line 6W, 16+00 S Geary Twp grid.
 LATITUDE _____ DEPARTURE _____
 ELEVATION _____ AZIMUTH 0° DIP 57°
 STARTED Oct 4-77 FINISHED Oct 22-77

FOOTAGE	DIP	AZIMUTH	FOOTAGE	DIP	AZIMUTH
collar	57°				
250	52 1/2°				
450	46°				

HOLE NO. CG 77-4 SHEET NO. 1
 REMARKS AQ
 LOGGED BY L.G. Holscher

FOOTAGE		DESCRIPTION	SAMPLE				ASSAYS			
FROM	TO		NO.	% SULPHIDES	FOOTAGE		%	%	OZ/TON	OZ/TON
					FROM	TO				
0	132	<u>Casing:</u>								
132	185	<u>Peridotite (?)</u> F.g. massive greenish. Magnetite locally dark oval shadow xls ringed w. light green altin products. Some serpentine bands. Slight elliptical py. Little carbon.								
185	266.3	<u>Volcanics:</u> (andesite?) Finer gr. than above. Indistinct cont. 51 sh.d @ 45° Amygdaloidal sections @ 198-204 209-211 213.5-214.5 Generally non carbid. except discrete veinlets. Only locally weakly magnetic.								
266.3	268.7	<u>Dike:</u> (lamprophyre) Black, biotitic highly carbid. Fine sulph. Non Mag.								
268.7	451	<u>Volcanics:</u> as above. Chloritized. Sh.d @ 45°±. Some Q veins up to 3/4" wide (w. magnetite at 304') v. little S. @ 300.3' One conductive veinlet of Py (=CP)								

EM. 6-1168

LANGRIDGE LIMITED,

DIAMOND DRILL RECORD

NAME OF PROPERTY _____
 HOLE NO. _____ LENGTH _____
 LOCATION _____
 LATITUDE _____ DEPARTURE _____
 ELEVATION _____ AZIMUTH _____ DIP _____
 STARTED _____ FINISHED _____

FOOTAGE	DIP	AZIMUTH	FOOTAGE	DIP	AZIMUTH

HOLE NO. CG77-4 SHEET NO. 2

REMARKS AQ

LOGGED BY L. G. Holden

FOOTAGE		DESCRIPTION	SAMPLE				ASSAYS				
FROM	TO		NO.	% SULPHIDES	FOOTAGE			%	%	OZ/TON	OZ/TON
					FROM	TO	TOTAL				
268.7	451	(cont'd) amygdaloidal sections. Carbon increasing lower in section. Bleached white highly shd sections @ 421 - 423 449 - 451 (assoc. brecciation)									
451		<u>End of hole.</u>									
		L.C. 200.7 - 202 203 - 204									
		80 ft Hx casing left in hole.									

EM. 6 - 1168

LANGRIDGE LIMITED,

DIAMOND DRILL RECORD

NAME OF PROPERTY _____
 HOLE NO. _____ LENGTH _____
 LOCATION _____
 LATITUDE _____ DEPARTURE _____
 ELEVATION _____ AZIMUTH _____ DIP _____
 STARTED _____ FINISHED _____

FOOTAGE	DIP	AZIMUTH	FOOTAGE	DIP	AZIMUTH

HOLE NO. CG77-3 SHEET NO. 2.

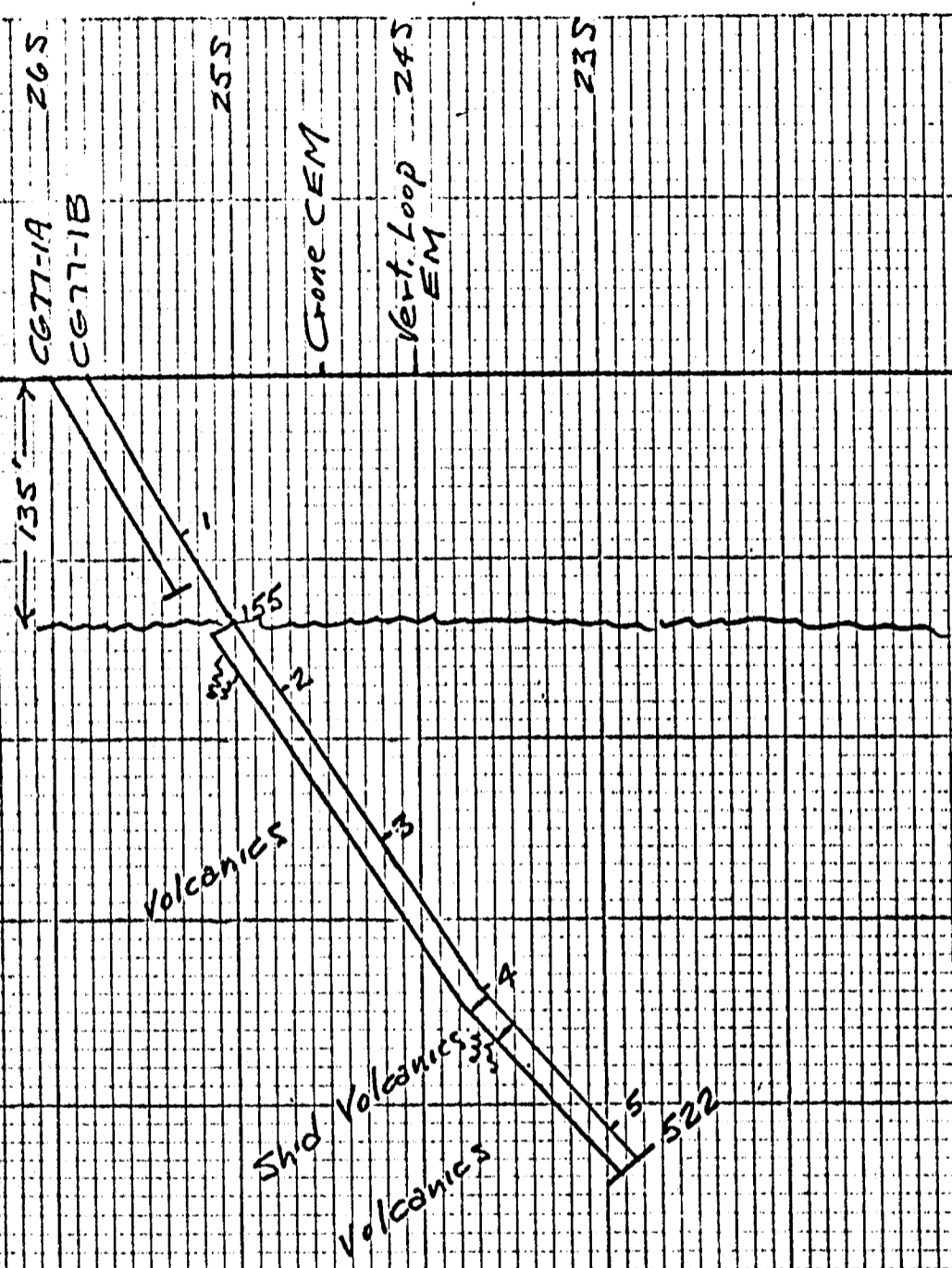
REMARKS AQ

LOGGED BY L.G. Hobbs

FOOTAGE		DESCRIPTION	SAMPLE			ASSAYS				
FROM	TO		NO.	% SULPHIDES	FOOTAGE		%	%	OZ/TON	OZ/TON
					FROM	TO				
494	517	<u>Talc Schist: Cubic py min'n at u.c.</u> <u>Some cubic py throughout.</u>								
517	639	<u>Chloritic Schist: Banding @ 55° similar</u> <u>to section 122-159.</u>								
639	640	<u>Diorite: intrusive: rel sharp u.c., l.c.</u>								
640	680	<u>Chloritic Schist: well carb'd.</u>								
	680	<u>End of hole.</u>								

EM. 6-1168

LANGRIDGE LIMITED,



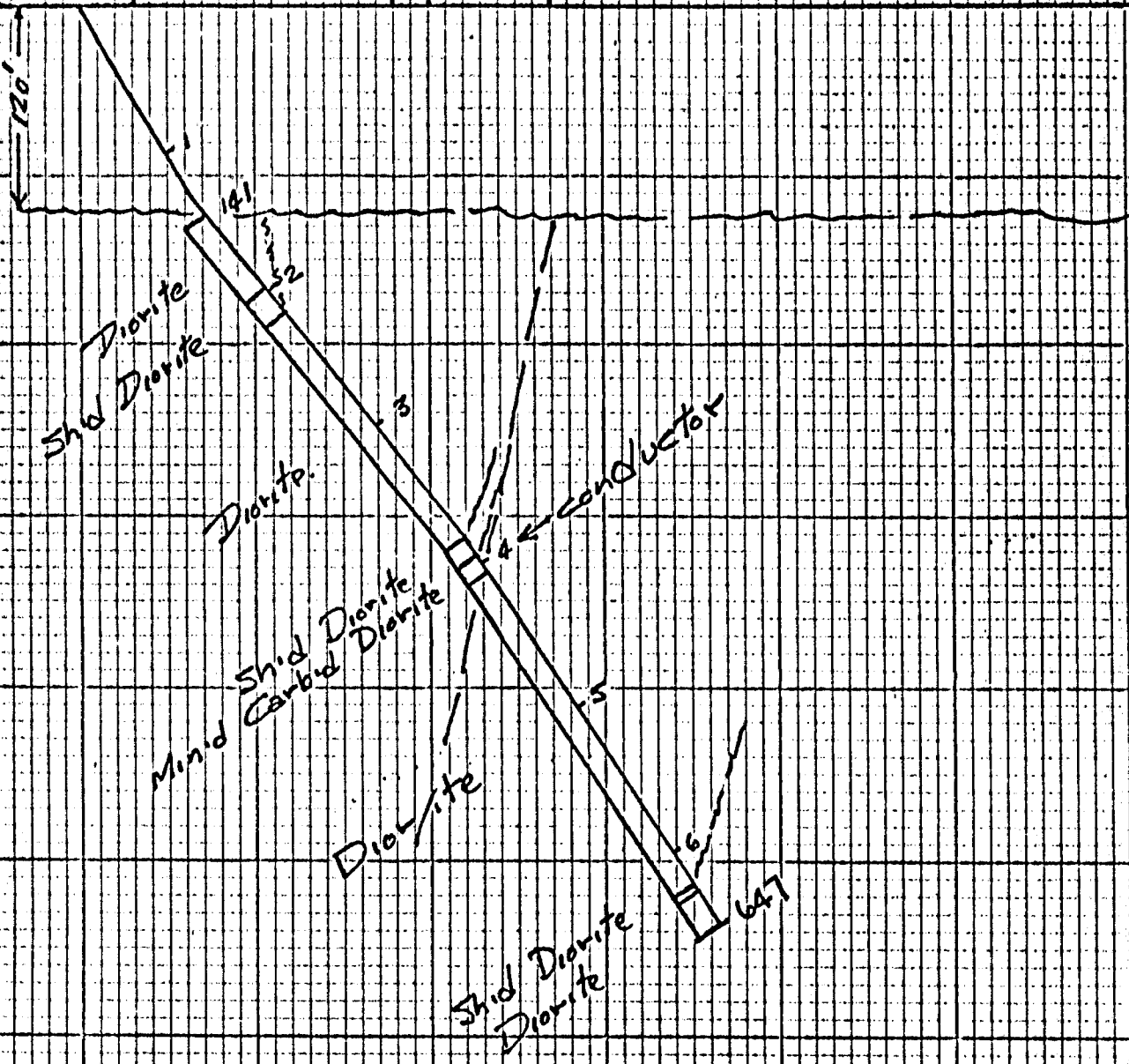
Section
 DDH CG77 1A, 1B
 Scale: 1 in = 100 ft.
 Oct. 1977 L.G.H.

CG 77-2

← gravity →

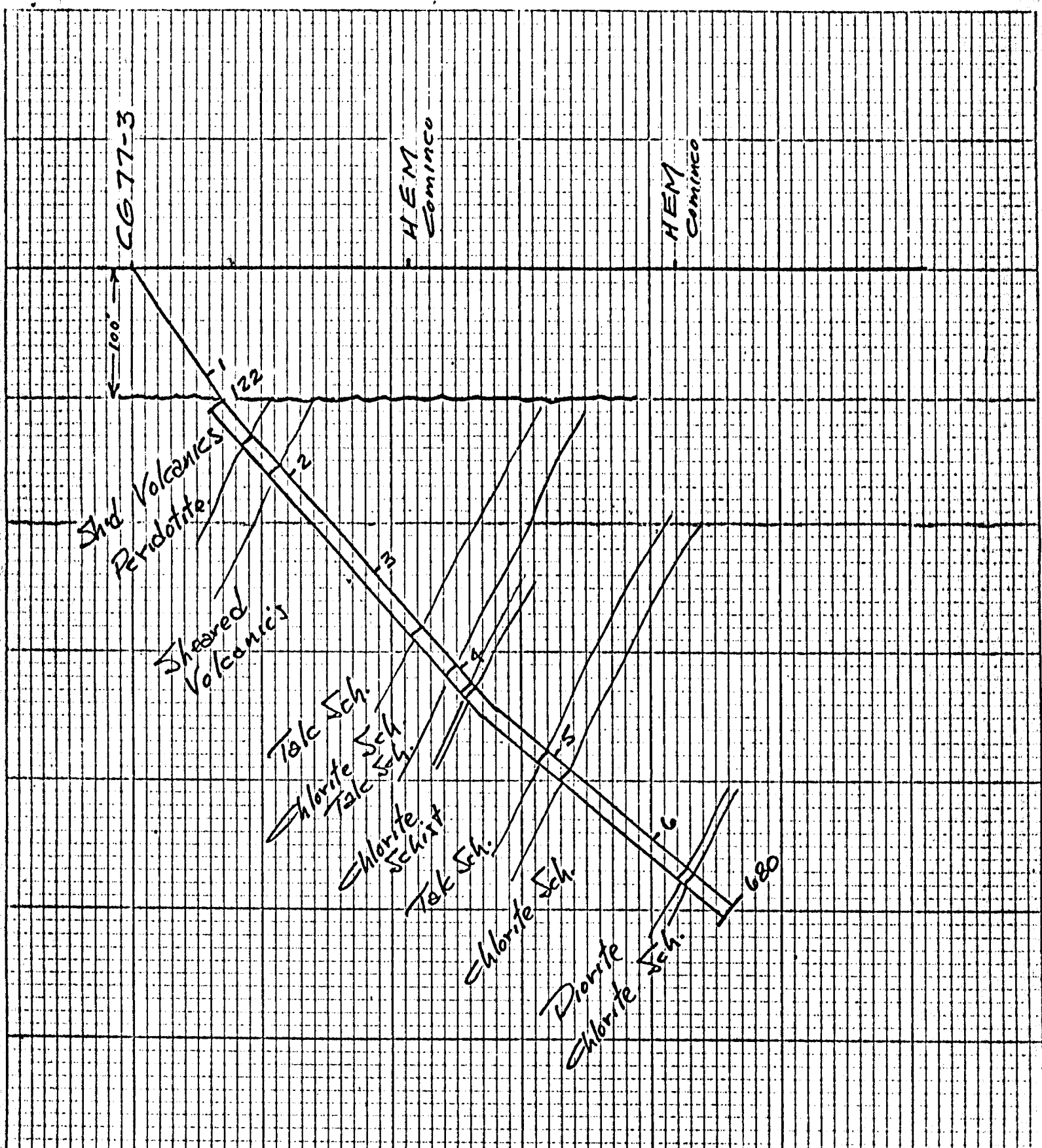
Torrey

Cominco MEM

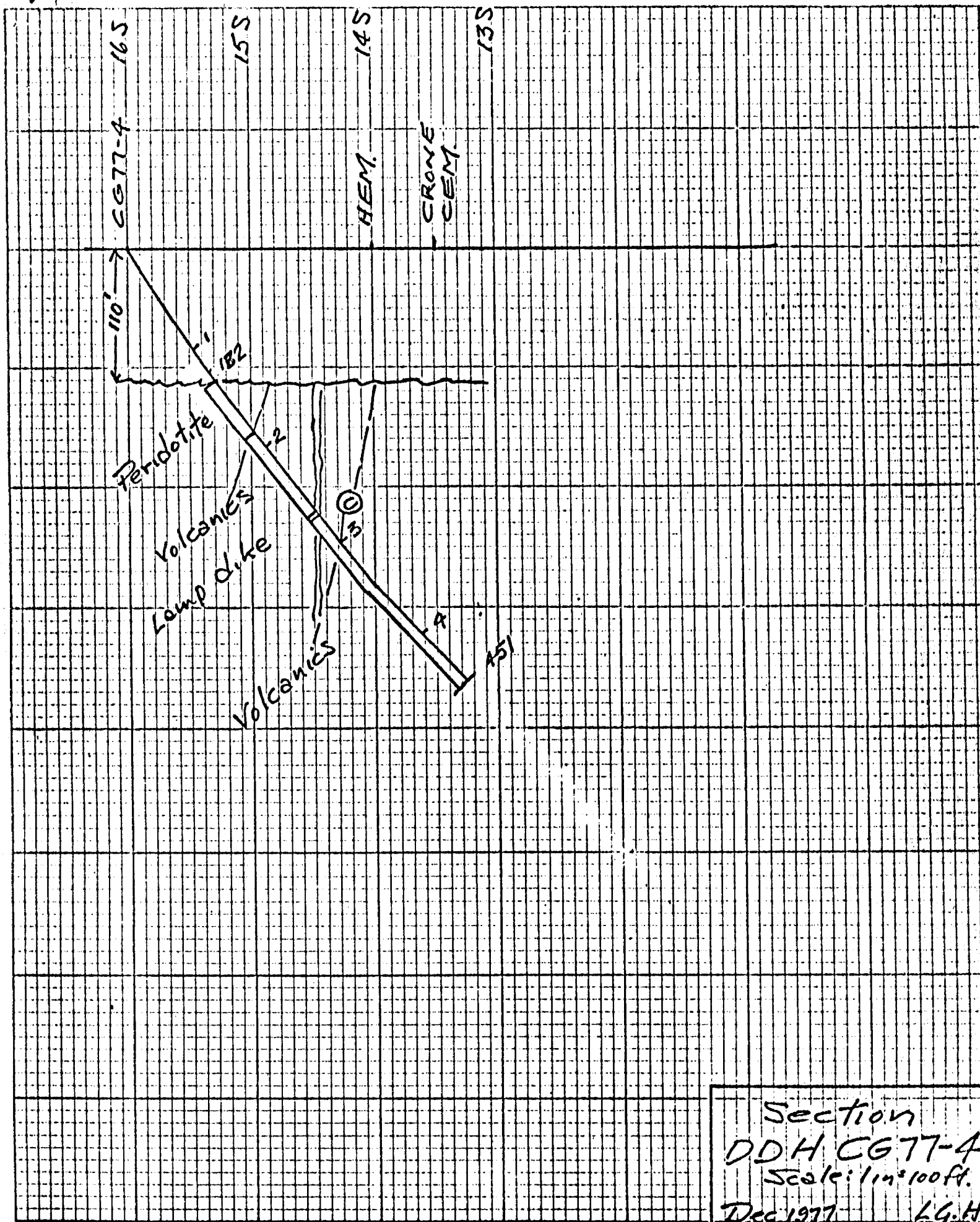


TESTS	
COLLAR	60°
250'	52°
527'	57 1/2°

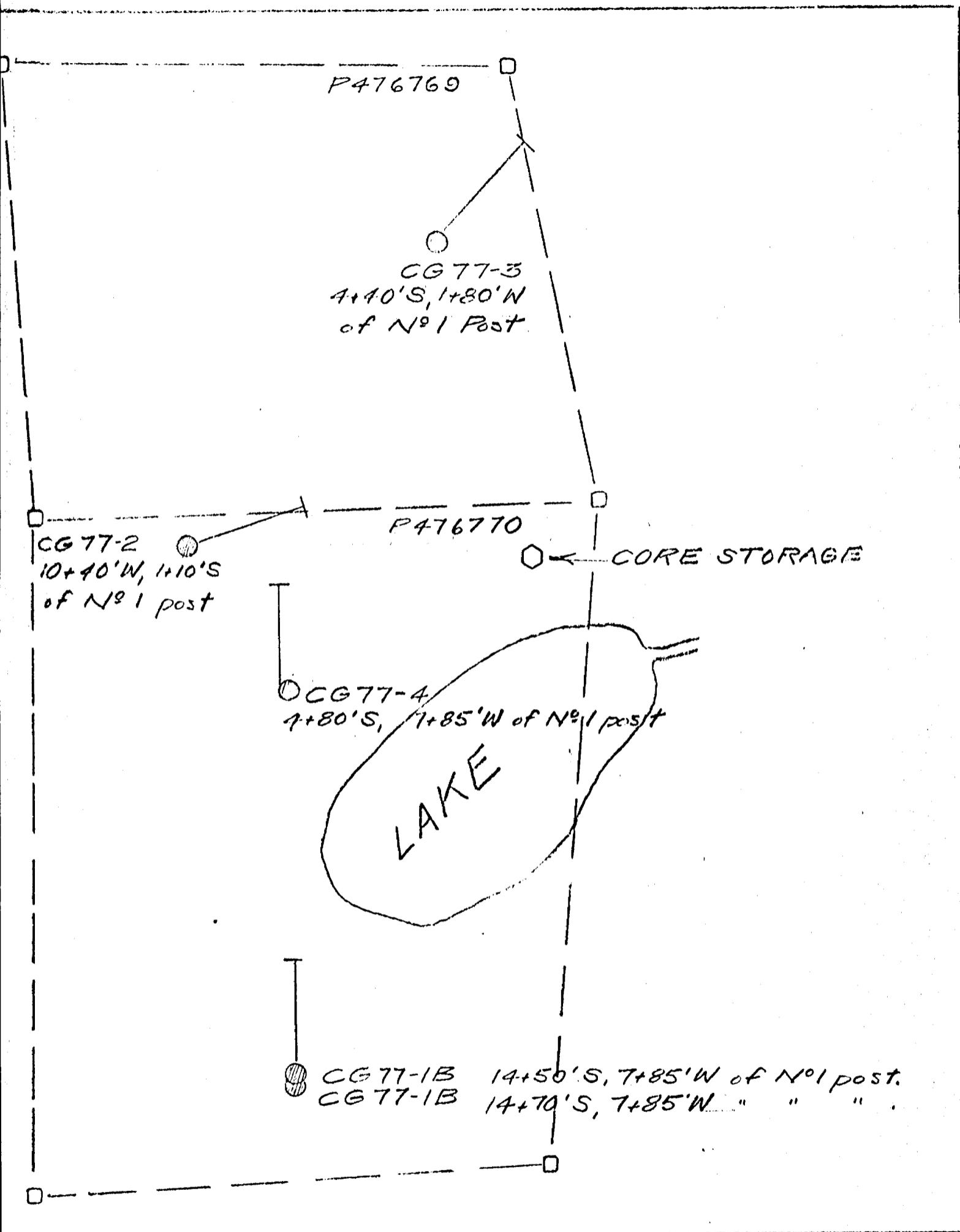
Section
 DDH CG 77-2
 Scale: 1 in = 100 ft.
 Oct 1977 L.G.H.



Section
 DDH CG 77-3
 Scale: 1 in = 100 ft.
 Dec 1977 L.G.H.



Section
 DDH CG77-4
 Scale: 1 in = 100 ft.
 Dec 1977 L.G.H.



Location Sketch
 Drill holes CG 77-1A, 1B, 2, 3, 4
 Gairy Twp, Ont.
 May 1978 L. G. Hobbs

Scale: 1 in = 300 ft.

#59-78 WALTER FOSTER