



42A13SE0056 19 THORBURN

010

Diamond Drilling

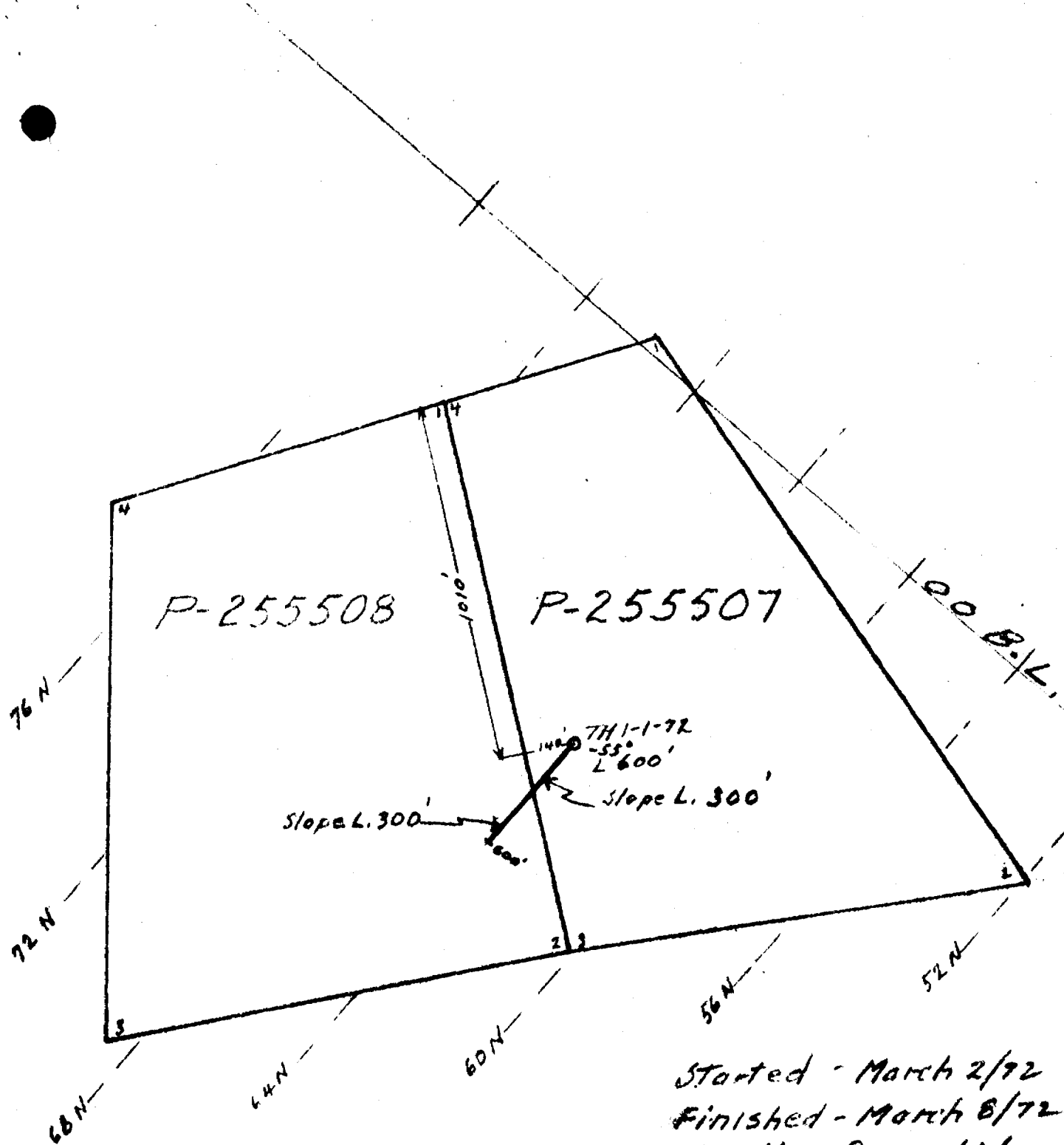
Township OF THORBURN

Report NO: 19

Work performed by: HOLLINGER MINES

Claim NO	Hole NO	Footage	Date	Note
P. 255507	TH1-1-72		Mar/72	(1)

Notes: (1) 64/72 (Geary)



Started - March 2/72
Finished - March 8/72
Bradley Bros. Ltd.
Wire Line - AQ Core.

PLAN OF DDH # TH1-1-72
THORBURN #1 GROUP, THORBURN TWP.
Scale - 1" = 400'

W. H. Hansen
HOLLINGER LINES LIMITED
TIMMINS, ONTARIO

Location of Collar from #4 - P-255507 South 1010', East 140'

FORM 922 XL 64 N
 NORTH _____
 EAST. 9 + 75 W
 ELEV. Surface
 AZIM. 225°
 DIP Collar @ 55° @ 200' - 54.5°;
 @ 400' - 50.5°; @ 600' - 37°

DIAMOND DRILL REPORT

HOLE NO. TH1-1-72
 COMMENCED March 2, 1972
 FINISHED March 8, 1972
 PURPOSE OF HOLE Test EM and mag.

PROPERTY THORBURN #1 GROUP
 Claim P-255507 Thorburn Township

Drilled by Bradley Bros.

FROM	TO	DESCRIPTION	CORE SAMPLES					DESCRIPTION OF SAMPLE
			FROM	TO	RECOV.	WIDTH	ASSAY	
0	112	Casing.						
112	235.6	Altered pyroxenite or pyroxene gabbro - The first 50' is coarse grained and individual pyroxene crystals can be seen in a matrix containing calcite, magnesite and some serpentine. Near the end of the zone the rock becomes much more chloritic and the lower contact is fine grained - contact broken. Generally samples taken are non-magnetic, but around 192 there are some disseminated crystals of magnetite. Usually there is some pyrite - @ 115 there are a few specks of cp.						
235.6	262.5	Zone of amygdaloidal andesite - amygdales are rounded with calcite only rarely do they contain mineralization. 255-260 highly altered zone with lots of yellow green sericite, carbonate some blue grey quartz - minor blebs po. There are a few zones where there is local iron staining - appears to most affect the more altered bands. Lower contact gradational.						
262.5	386	Strongly graphitic zone - tuff with						

NORTH _____
 EAST _____
 ELEV. _____
 AZIM. _____
 DIP _____

DIAMOND DRILL REPORT

PROPERTY THORBURN #1 GROUP
 Thorburn Twp.

HOLE NO. TH1-1-72

COMMENCED _____

FINISHED _____

PURPOSE OF _____

HOLE _____

FROM	TO	DESCRIPTION	CORE SAMPLES					DESCRIPTION OF SAMPLE
			FROM	TO	RECOV.	WIDTH	ASSAY	
		some interstitial dacite.						
		Some banding @ 50°. The graphitic						Lost Core
		horizons have some primary bands of						314.1 - 316
		pyrite and secondary occurrences						316.9 - 318.1
		along qtz-CO ₂ stringers and concretionals						321 - 322
		with some vugs in qtz-CO ₂ blobs.						322.4 - 323.2
		There is some secondary growth of py						326.1 - 327.5
		XLs in some of the blobs.						336.9 - 338
		The dacite is dark grey with graphite						346.2 - 347.5
		- harder - pyritic - only locally						389 - 390
		fragments are seen.						Cu, Zn, Ni, Ag, Au.
		269-295 strongly graphitic 30-40% py	275	280		5		GRT - 40% py.
		295-318.6 GRT - lesser graphite.						
		318.6 - 325.3 GRT - lot of dissem.						
		primary py. - porous - soft.						
		325.3 - 335.4 - dacitic - 20% py	320	325	3.2	5		GRT - abs - 40% py
		335.4 - 338 graphitic, brecc. 40% py						
		338-349 dacite - 40% diss py.						
		in blobs and XLs.						
		349 - 350 graphite w. py	340	345		5		Dacite - 40% py
		350 - 356.2 dacite - as 338-349						
		356.2 - 363.5 GRT 30% py						
		363.5 - 377.5 dacite amg in places.						
		377.5-386 strongly graphitic 40% py	380	385		5		Graphitic - 40% py
		porous, some vugs w. graph. + py.						

FORM 922
 NORTH _____
 EAST _____
 ELEV. _____
 AZIM. _____
 DIP _____

DIAMOND DRILL REPORT

HOLE NO. THL-1-72
 COMMENCED _____
 FINISHED _____
 PURPOSE OF _____
 HOLE _____

PROPERTY THORBURN #1 GROUP
Thorburn Twp.

FROM	TO	DESCRIPTION	CORE SAMPLES					DESCRIPTION OF SAMPLE
			FROM	TO	RECOV.	WIDTH	ASSAY	
386	455.5	Andesite with some short graphitic zones - the contacts with the graphite are much more abrupt than previously seen in the dacite.						Lost Core 402.7 - 403.7
		The andesite is much darker green and chloritic than the dacite - some sericite. Mineralized with pyrite.						
		386 - 404.2 andesite 20% py near end of this zone. 402-404 the andesite is very soft and highly altered contact w. GRT @ 50°.						
		404.2 - 407.2 GRT 20% py						
		407.2 - 425 first 2' dacite - later dark andesite - weakly amygdaloidal to 413.5 then grading to a carbonatized andesite.						
		425 - 426.2 GRT w. py.						
		426.2 - 433.8 altered andesite w. some very small specks of graphite sericite, chlorite, carbonate + minor talc, very minor py, contacts @ 60°.						
		433.8 - 436.7 GRT w. py						
		436.7 - 439.1 dark green andesite w. cubic py contacts @ 60°.						
		439.1 - 439.5 GRT w. py						
		439.5 - 455.5 Andesite - amygdaloidal						

FORM 922
 NORTH _____
 EAST. _____
 ELEV. _____
 AZIM. _____
 DIP _____

DIAMOND DRILL REPORT

HOLE NO. TH1-1-72
 COMMENCED _____
 FINISHED _____
 PURPOSE OF _____
 HOLE _____

PROPERTY THORBURN #1 GROUP
 Thorburn Twp.

FROM	TO	DESCRIPTION	CORE SAMPLES					DESCRIPTION OF SAMPLE
			FROM	TO	RECOV.	WIDTH	ASSAY	
<u>GEOCHEMISTRY & THIN SECTION</u>								
TS. 7848	@ 125	Pyroxene gabbro, coarse grained w. py						
7849	@ 150	" medium " w. py						
TS. 7850	@ 175	" " " w. py						
7851	@ 200	" " " w. py						
7852	@ 225	" fine grained chloritic						
TS. 7853	@ 250	Amygdaloidal dacite - rusty.						
7854	@ 275	Graphitic tuff - nodular py.						
TS. 7855	@ 300	" " - lesser graphite.						
7856	@ 325	" " - pyritic - primary.						
TS. 7857	@ 350	" " - w. pyrite.						
7858	@ 375	Grey dacite - pyrite.						
TS. 7859	@ 400	Andesite.						
7860	@ 425	Carbonatized andesite.						
TS. 7861	@ 450	Amygdaloidal andesite.						
7862	@ 475	Ultrabasic - CO ₃ facies.						
TS. 7863	@ 500	" " " w. py						
7864	@ 525	" " "						
7865	@ 550	" " " serp.						
7866	@ 575	" " "						
TS. 7867	@ 600	" " "						
7874	@ 110	Grab sample of pyroxene gabbro.						

Dr. R. Alexander

HOLLINGER MINES LIMITED
 TIMMINS, ONTARIO