



42A13SE0097 63.1967 REID

~~63.1967~~
63.1967

010

INTRODUCTION

During the period from March 8 to 19, 1966, an electromagnetic survey was carried out on a group of seven contiguous claims located to the east of a large group of claims owned by Mespi Mines in central Reid Township.

The claims are recorded in the name of Mespi Mines Limited, 1705 Victory Building, 80 Richmond Street, West, Toronto, Ontario, and are numbered as follows:

P. 83383,4,5,6,7,8,9.

LOCATION AND ACCESS

The claims are located in central Reid township about $1\frac{1}{2}$ miles west of the Mattagami River and some 12 miles northwest of Timmins, Ontario.

Motorized toboggans were used to provide access between Mespi's semi-permanent camp on Thorburn Lake and the claim group. The camp was serviced by helicopter and fixed wing aircraft.

PREVIOUS WORK

The claim group has been covered by two combined magnetic and electromagnetic airborne surveys.

Canadian Aero Mineral Surveys flew the ground in 1963 for B.W. Lang of Toronto using $1/8$ mile flight line spacings and lines bearing northwest.

The area was reflowed in May 1964 in a northeasterly direction by Hunting Survey Corporation for Mespi Mines Ltd.

This group was previously held by Chipman Lake Mines Limited and lines were cut on the group from an easterly bearing baseline. No records of any further work are available.

INSTRUMENTS USED AND SURVEY METHOD

A Crone dual frequency transceiver unit was used for the survey. The in-line method and a 300 foot coil separation were employed. Stations were read at 100 foot intervals. The dip angles shown on the accompanying plan are resultant dip angles and are plotted at the mid-point between the coils.

6.7 miles of line were cut and 289 stations established.

SURVEY RESULTS

No anomalous results were recorded within the area.

GEOLOGY

There are two small outcrops of a fine grained, massive, dark coloured basic rock on the claim group. These outcrops are probably a fine grained facies of the gabbroic intrusion encountered in drill holes to the west of the group.

CONCLUSIONS AND RECOMMENDATIONS

No anomalous results were recorded on this ground so that no further work is recommended. The claims should be kept in good standing until it is established whether or not the anomalous zones to the west of this group extend onto the claim group.

Respectfully submitted

MESPI MINES LIMITED


J.E. Steers, Geologist.

JES/jf

Crone J.E.M. Dual Frequency unit

Each coil is a combined transmitter - receiver

Frequencies - High 1800 C.P.S.

Low 480 C.P.S.

Input to transmitter: - 0.6 x 12 Watts

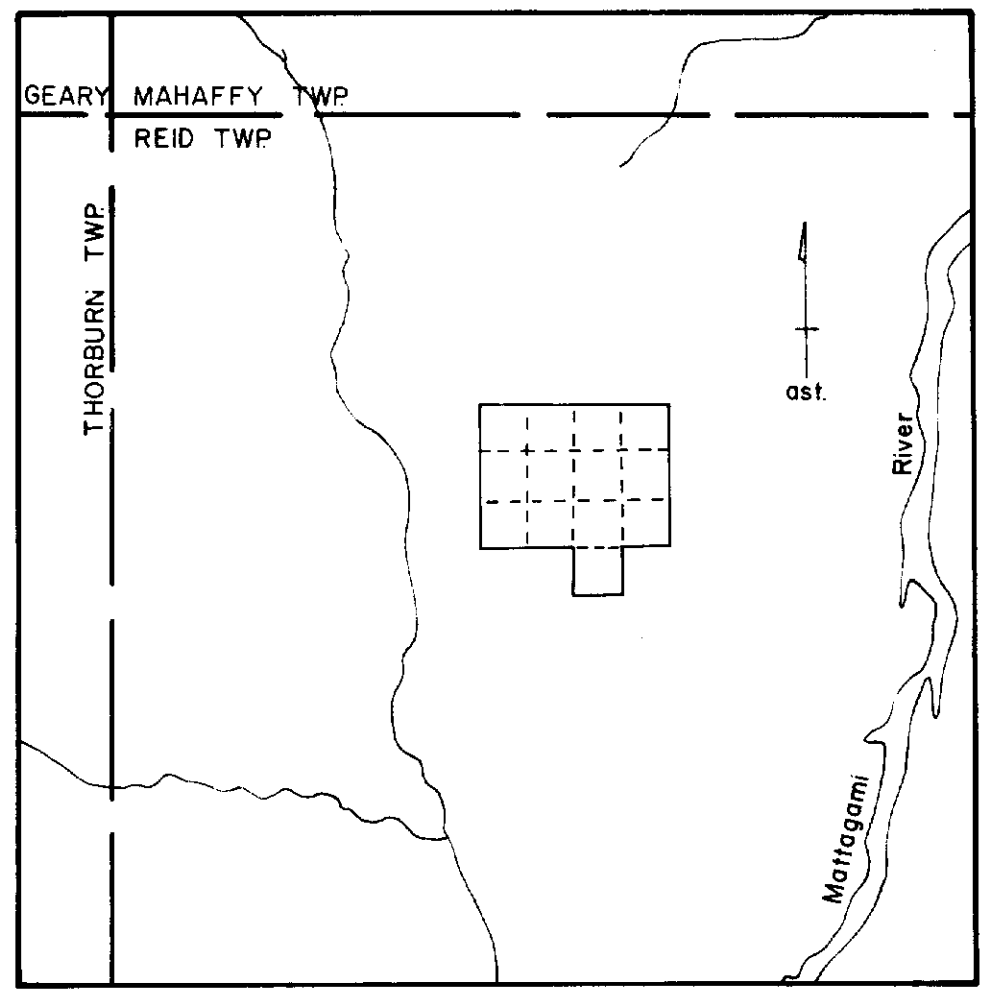
Receiver sensitivity - 1800 C.P.S. approx. 0.10 microvolt

480 C.P.S. approx. 0.10 microvolt

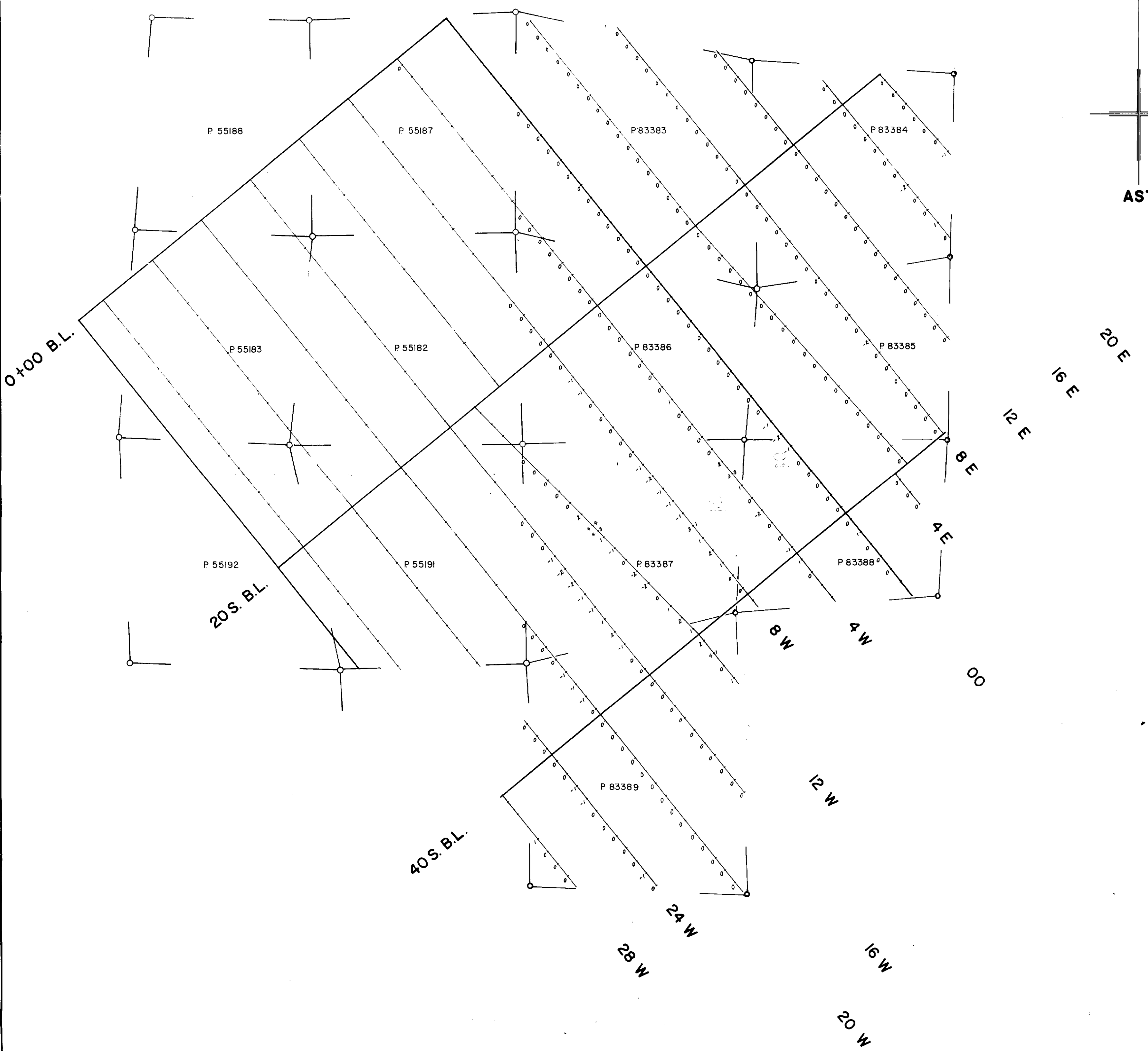
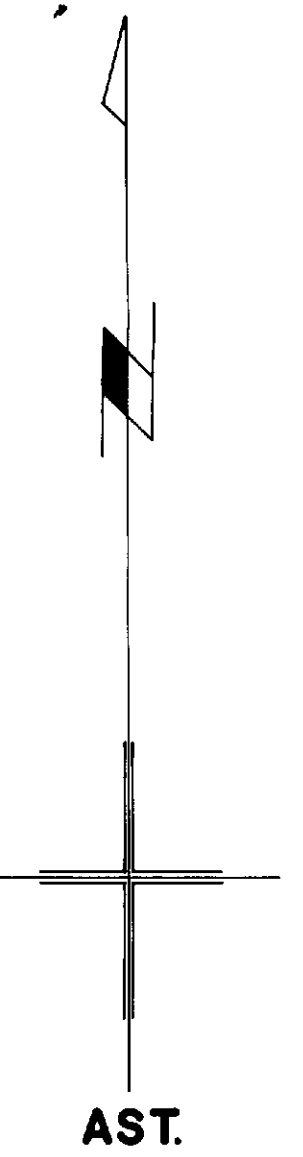
Methods of operation. J.E.M. (shoot back)

(Ref. Interpretation Theory in Applied Geophysics Grant &

West - McGraw Hill - Page 448)



Scale 1" = 1 Mile



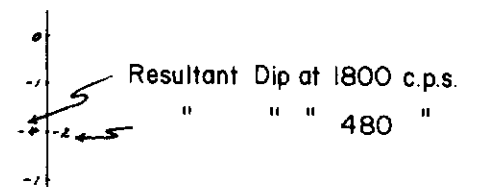
**MESPI MINES LTD.
ELECTRO-MAGNETIC SURVEY
REID TWP.**

INSTRUMENT: CRONE J.E.M.

DUAL FREQUENCY: IN-LINE METHOD
COILS 300' APART

MAP SCALE: 1" = 400'

LEGEND



Drawn by: W.B. Oughell
Approved by: *[Signature]*

SURVEY DATE: March 16-19, 1966



42A133E0097 63.1967 REID