



42A13SE0131 25 REID

010

Diamond Drilling

Township of REID

Report NO: 25

Work performed by: Mespil Mines Limited

Claim NO	Hole NO	Footage	Date	Note
P 55184	R-1	682.0'	Mar/66	
P 55182	R-4	512.0'	Apr/66	
	R-2	583.0'	Mar/66	
	R-3	448.0'	Mar/66	
P 55189 ✓	R-5	511.0'	No Date	
P 55194	R-7	469.0'	No Date	
P 55195	R-8	258.0'	No Date	
P 55186 ✓	R-9	302.0'	July/66	
P 55198	R-10	693.0'	No Date	
P 83389	R-12	615.0'	Aug/66	
	R-13	599.0'	No Date	
	R-14	552.0'	No Date	
P 85160	R-15	675.0'	Nov/66	
P 85170	R-16B	552.0'	No Date	
P 85172	R-17	572.0'	Nov/66	

Notes:

Mahaffy Twp

Thorburn Twp

		1108	1109	1110	1111	1112	1113	1114	1115		
		1116	1117	1118	1119	1120	1121	1122	1123		
		1124	1125	1126	1127	1128	1129	1130	1131		
		1132	1133	1134	1135	1136	1137	1138	1139		
		1140	1141	1142	1143	1144	1145	1146	1147		
		1148	1149	1150	1151	1152	1153	1154	1155		
		1156	1157	1158	1159	1160	1161	1162	1163		
		1164	1165	1166	1167	1168	1169	1170	1171		
		1172	1173	1174	1175	1176	1177	1178	1179		
		1180	1181	1182	1183	1184	1185	1186	1187		
		1188	1189	1190	1191	1192	1193	1194	1195		
		1196	1197	1198	1199	1200	1201	1202	1203		
		1204	1205	1206	1207	1208	1209	1210	1211		
		1212	1213	1214	1215	1216	1217	1218	1219		
		1220	1221	1222	1223	1224	1225	1226	1227		
		1228	1229	1230	1231	1232	1233	1234	1235		
		1236	1237	1238	1239	1240	1241	1242	1243		
		1244	1245	1246	1247	1248	1249	1250	1251		
		1252	1253	1254	1255	1256	1257	1258	1259		
		1260	1261	1262	1263	1264	1265	1266	1267		
		1268	1269	1270	1271	1272	1273	1274	1275		
		1276	1277	1278	1279	1280	1281	1282	1283		
		1284	1285	1286	1287	1288	1289	1290	1291		
		1292	1293	1294	1295	1296	1297	1298	1299		
		1300	1301	1302	1303	1304	1305	1306	1307		

Haffy Twp.

58596	58622	58648	58674	58700	58726	58752	58778	58804	58830	58856	58882	58908	58934	58960	58986	59012	59038	59064	59090	59116	59142	59168	59194	59220	59246	59272	59298	59324	59350	59376	59402	59428	59454	59480	59506	59532	59558	59584	59610	59636	59662	59688	59714	59740	59766	59792	59818	59844	59870	59896	59922	59948	59974	60000	60026	60052	60078	60104	60130	60156	60182	60208	60234	60260	60286	60312	60338	60364	60390	60416	60442	60468	60494	60520	60546	60572	60598	60624	60650	60676	60702	60728	60754	60780	60806	60832	60858	60884	60910	60936	60962	60988	61014	61040	61066	61092	61118	61144	61170	61196	61222	61248	61274	61300	61326	61352	61378	61404	61430	61456	61482	61508	61534	61560	61586	61612	61638	61664	61690	61716	61742	61768	61794	61820	61846	61872	61898	61924	61950	61976	62002	62028	62054	62080	62106	62132	62158	62184	62210	62236	62262	62288	62314	62340	62366	62392	62418	62444	62470	62496	62522	62548	62574	62600	62626	62652	62678	62704	62730	62756	62782	62808	62834	62860	62886	62912	62938	62964	62990	63016	63042	63068	63094	63120	63146	63172	63198	63224	63250	63276	63302	63328	63354	63380	63406	63432	63458	63484	63510	63536	63562	63588	63614	63640	63666	63692	63718	63744	63770	63796	63822	63848	63874	63900	63926	63952	63978	64004	64030	64056	64082	64108	64134	64160	64186	64212	64238	64264	64290	64316	64342	64368	64394	64420	64446	64472	64498	64524	64550	64576	64602	64628	64654	64680	64706	64732	64758	64784	64810	64836	64862	64888	64914	64940	64966	64992	65018	65044	65070	65096	65122	65148	65174	65200	65226	65252	65278	65304	65330	65356	65382	65408	65434	65460	65486	65512	65538	65564	65590	65616	65642	65668	65694	65720	65746	65772	65798	65824	65850	65876	65902	65928	65954	65980	66006	66032	66058	66084	66110	66136	66162	66188	66214	66240	66266	66292	66318	66344	66370	66396	66422	66448	66474	66500	66526	66552	66578	66604	66630	66656	66682	66708	66734	66760	66786	66812	66838	66864	66890	66916	66942	66968	66994	67020	67046	67072	67098	67124	67150	67176	67202	67228	67254	67280	67306	67332	67358	67384	67410	67436	67462	67488	67514	67540	67566	67592	67618	67644	67670	67696	67722	67748	67774	67800	67826	67852	67878	67904	67930	67956	67982	68008	68034	68060	68086	68112	68138	68164	68190	68216	68242	68268	68294	68320	68346	68372	68398	68424	68450	68476	68502	68528	68554	68580	68606	68632	68658	68684	68710	68736	68762	68788	68814	68840	68866	68892	68918	68944	68970	68996	69022	69048	69074	69100	69126	69152	69178	69204	69230	69256	69282	69308	69334	69360	69386	69412	69438	69464	69490	69516	69542	69568	69594	69620	69646	69672	69698	69724	69750	69776	69802	69828	69854	69880	69906	69932	69958	69984	70010	70036	70062	70088	70114	70140	70166	70192	70218	70244	70270	70296	70322	70348	70374	70400	70426	70452	70478	70504	70530	70556	70582	70608	70634	70660	70686	70712	70738	70764	70790	70816	70842	70868	70894	70920	70946	70972	70998	71024	71050	71076	71102	71128	71154	71180	71206	71232	71258	71284	71310	71336	71362	71388	71414	71440	71466	71492	71518	71544	71570	71596	71622	71648	71674	71700	71726	71752	71778	71804	71830	71856	71882	71908	71934	71960	71986	72012	72038	72064	72090	72116	72142	72168	72194	72220	72246	72272	72298	72324	72350	72376	72402	72428	72454	72480	72506	72532	72558	72584	72610	72636	72662	72688	72714	72740	72766	72792	72818	72844	72870	72896	72922	72948	72974	72999
-------	-------	-------	-------	-------	-------	-------	-------	-------	-------	-------	-------	-------	-------	-------	-------	-------	-------	-------	-------	-------	-------	-------	-------	-------	-------	-------	-------	-------	-------	-------	-------	-------	-------	-------	-------	-------	-------	-------	-------	-------	-------	-------	-------	-------	-------	-------	-------	-------	-------	-------	-------	-------	-------	-------	-------	-------	-------	-------	-------	-------	-------	-------	-------	-------	-------	-------	-------	-------	-------	-------	-------	-------	-------	-------	-------	-------	-------	-------	-------	-------	-------	-------	-------	-------	-------	-------	-------	-------	-------	-------	-------	-------	-------	-------	-------	-------	-------	-------	-------	-------	-------	-------	-------	-------	-------	-------	-------	-------	-------	-------	-------	-------	-------	-------	-------	-------	-------	-------	-------	-------	-------	-------	-------	-------	-------	-------	-------	-------	-------	-------	-------	-------	-------	-------	-------	-------	-------	-------	-------	-------	-------	-------	-------	-------	-------	-------	-------	-------	-------	-------	-------	-------	-------	-------	-------	-------	-------	-------	-------	-------	-------	-------	-------	-------	-------	-------	-------	-------	-------	-------	-------	-------	-------	-------	-------	-------	-------	-------	-------	-------	-------	-------	-------	-------	-------	-------	-------	-------	-------	-------	-------	-------	-------	-------	-------	-------	-------	-------	-------	-------	-------	-------	-------	-------	-------	-------	-------	-------	-------	-------	-------	-------	-------	-------	-------	-------	-------	-------	-------	-------	-------	-------	-------	-------	-------	-------	-------	-------	-------	-------	-------	-------	-------	-------	-------	-------	-------	-------	-------	-------	-------	-------	-------	-------	-------	-------	-------	-------	-------	-------	-------	-------	-------	-------	-------	-------	-------	-------	-------	-------	-------	-------	-------	-------	-------	-------	-------	-------	-------	-------	-------	-------	-------	-------	-------	-------	-------	-------	-------	-------	-------	-------	-------	-------	-------	-------	-------	-------	-------	-------	-------	-------	-------	-------	-------	-------	-------	-------	-------	-------	-------	-------	-------	-------	-------	-------	-------	-------	-------	-------	-------	-------	-------	-------	-------	-------	-------	-------	-------	-------	-------	-------	-------	-------	-------	-------	-------	-------	-------	-------	-------	-------	-------	-------	-------	-------	-------	-------	-------	-------	-------	-------	-------	-------	-------	-------	-------	-------	-------	-------	-------	-------	-------	-------	-------	-------	-------	-------	-------	-------	-------	-------	-------	-------	-------	-------	-------	-------	-------	-------	-------	-------	-------	-------	-------	-------	-------	-------	-------	-------	-------	-------	-------	-------	-------	-------	-------	-------	-------	-------	-------	-------	-------	-------	-------	-------	-------	-------	-------	-------	-------	-------	-------	-------	-------	-------	-------	-------	-------	-------	-------	-------	-------	-------	-------	-------	-------	-------	-------	-------	-------	-------	-------	-------	-------	-------	-------	-------	-------	-------	-------	-------	-------	-------	-------	-------	-------	-------	-------	-------	-------	-------	-------	-------	-------	-------	-------	-------	-------	-------	-------	-------	-------	-------	-------	-------	-------	-------	-------	-------	-------	-------	-------	-------	-------	-------	-------	-------	-------	-------	-------	-------	-------	-------	-------	-------	-------	-------	-------	-------	-------	-------	-------	-------	-------	-------	-------	-------	-------	-------	-------	-------	-------	-------	-------	-------	-------	-------	-------	-------	-------	-------	-------	-------	-------	-------	-------	-------	-------	-------	-------	-------	-------	-------	-------	-------	-------	-------	-------	-------	-------	-------	-------	-------	-------	-------	-------	-------	-------	-------	-------	-------	-------	-------	-------	-------	-------	-------	-------	-------	-------	-------	-------	-------	-------	-------	-------	-------	-------	-------	-------	-------	-------	-------

DITCH

Handwritten signature/initials

Handwritten signature/initials

THORNTON TWP.

PAID
TOP

PAID
COVERED BY 5

PAID
COVERED BY 5

PAID
COVERED BY 5

DIAMOND DRILL HOLE RECORD, DDH No 2. # - 1

PROPERTY Raid Township CLAIM P-56184 SHEET No. 2
 LATITUDE 43 BEARING North (Ast.) STARTED March 1, 1966
 DEPARTURE 3 50 S DIST. - 50 @ collar, 60 @ 230, 63 @ 600 COMPLETED March 2, 1966
 ELEVATION _____ HORIZ. _____ VERT. _____ DEPTH 662

DRILLED BY Continental Diamond Drilling

DEPTH - FEET	FORMATION	SAMPLE NO.	FROM	TO	WIDTH	Au	VALUES			ECONOMIC GEOLOGY MINERALIZATION
							Ag	Cu	% Zn	
0 - 226	Casing									
226 - 600	Gabbro, medium grained, diabasic texture feldspar to mafics ratio 60-40, 5-10% magnetite, a few flecks of pyrrhotite, occasional knot olivene, badly fractured all fractures highly chloritized and slickensided, occasionally small quartz phenocrysts visible. 460-600 finer grained contact facies extremely badly fractured, local carbo- nitization, occasionally film of pyrite along fractures.									
	589-590 Massive graphite in contacts	4181	589	590	1.0	Tr	Tr	0.07	0.02	nil
	between brecciated gabbro and rhyolitic volcanics.	4182	600	605	5.0	Tr		0.07		nil
		4183	605	610	5.0	Tr	0.05	0.11	0.02	nil Light chalcopyrite
600 - 660	Graphite with short sections of fractu-	4184	610	615	5.0	Tr	0.05	0.11	0.03	nil Light chalcopyrite

ENGINEER: _____

155182

DIAMOND DRILL HOLE RECORD, DDH No 2.5-1

PROPERTY _____ CLAIM _____ SHEET No. 2

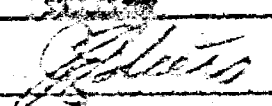
LATITUDE _____ BEARING _____ STARTED _____

DEPARTURE _____ DIP _____ COMPLETED _____

ELEVATION _____ HORIZ. _____ VERT. _____ DEPTH _____

DRILLED BY _____

DEPTH - FEET	FORMATION	SAMPLE NO.	FROM	TO	WIDTH	VALUES				ECONOMIC GEOLOGY MINERALIZATION
						As	Ag	Cu	Fe	
	red rhyolite, heavy pyrite, hornblende	43.85	615	620	5.0	0.005	0.0%	0.20	0.0%	0.7%, 20% hornblende, white, chalcopyrite
	and light chalcocopyrite mineralization	43.86	620	625	5.0	0.005	0.13	0.33	0.05	0.07, 20% hornblende, white, chalcopyrite
660 - 675	Rhyolite, fine grained, light grey with 10% pyrite, and pyrite disseminated and structure filling.	43.87	625	630	5.0	0.005	0.07	0.47	0.10	43. 30-37% <i>ditto</i>
		43.88	630	635	5.0	Tr	0.09	0.10	0.06	0.27, 10% hornblende, white and light chalcocopyrite, also hornblende white with trace of chalcocopyrite, white, glass
675 - 682	Basic intrusive? Chilled contact zone fine grained, dark green, massive,	43.89	635	640	5.0	Tr	0.13	0.12	0.06	0.18, minor sulphides, 15% granular quartz and calcite
	682 - END	43.90	640	645	5.0	Tr	0.0%	0.10	0.0%	43. 10% sulphides, 15% quartz & calcite
		43.91	645	650	5.0	Tr	0.03	0.24	0.0%	0.25, <i>ditto</i>
		43.92	650	655	5.0	0.005	0.21	0.12	0.06	0.25 <i>ditto</i>
		43.93	655	660	5.0	Tr	0.03	0.20	0.0%	0.25 as above but with minor surface brown, various sulphides
		43.94	660	665	5.0	Tr	0.05	0.05	0.51	43. Hornblende, & 10% white and hornblende, disseminated and fragments

ENGINEER: 

DIAMOND DRILL HOLE RECORD, DDH No

2. # - 1

PROPERTY _____

CLAY

SHEET No. 3

LATITUDE _____

BEARING _____

STARTED _____

DEPARTURE _____

DIP _____

COMPLETED _____

ELEVATION _____

HORIZ. _____

VERT. _____

DEPTH _____

DRILLED BY _____

PRINTED NAME

DEPTH, FEET

FORMATION

SAMPLE
NO.

FROM

TO

WIDTH

AV

VALUES

Ag

Cu

Ni

Zn

ECONOMIC GEOLOGY MINERALIZATION

43.95 665 670 5.0 Tr 0.03 0.04 Tr nil. Same as before

12.86 670 675 5.0 Tr 0.06 0.02 0.01 nil. ditto

ENGINEER: _____

Johnston

DIAMOND DRILL HOLE RECORD, DDH No

R. # 2

PROPERTY Reid Township CLAIM P. 55182 SHEET No. 3
 LATITUDE 27 E BEARING 4 - 10 deg. E (Act) STARTED March 13, 1966
 DEPARTURE 17 S DIP. - 50 @ collar, 62 @ 210, 54 @ 583 COMPLETED March 22, 1966
 ELEVATION _____ HORIZ. _____ VERT. _____ DEPTH 583
 DRILLED BY Continental Diamond Drilling

DEPTH - FEET	FORMATION	SAMPLE NO.	FROM	TO	WIDTH	VALUES			ECONOMIC GEOLOGY MINERALIZATION
						Fe	Py	Ch	
0 - 224	Casing								
224 - 310	Diorite, medium grained, light greenish, mafics chloritized, creamy feldspar, spar to mafic ratio 70:30. last 20 feet finer grained, silicified.								
310 - 316	Carbonaceous sediment, chloritic, sheared, lumps of graphite and pyrite and pyrrhotite 60% mixed pyrite and pyrrhotite	3503	310	316	6.0				conductor
316 - 319	Pyroclitic tuffs, well bedded 45 deg. core irregular splashes fracture filling pyrrhotite & pyrite.								
319 - 583	Grey to grey green rhyolitic tuffs and grey grits @ 383 contact between grit and coarser tuff 48 deg core. 418 - 441 fracture filling pyrrhotite & disseminated pyrrhotite, irregularly distributed avg. 6%. 441-455 pyrrhotite avg. 1-2%								

583 - END

ENGINEER: _____

J. Steers

DIAMOND DRILL HOLE RECORD, DDH No. E. 3

PROPERTY Reid Township CLAM P. 52.02 SHEET No. 3
 LATITUDE 31.3 BEARING S - 34 deg. W (Gold Bearing) STARTED March 25/66
 DEPARTURE 11. 00 - 5 DIP 50 @ 0, -57 @ 200, + 56 @ 320 COMPLETED March 27/66
 ELEVATION _____ HORIZ. _____ VERT. _____ DEPTH 448
 DRILLED BY Continental Diamond Drilling

DEPTH - FEET	FORMATION	SAMPLE NO.	FROM	TO	WIDTH	VALUES					ECONOMIC GEOLOGY MINERALIZATION
						Fe	Co	Cu	Mn	Zn	
0 - 220	Casing										
220 - 228	Massive graphite and narrow bands of carbonaceous tuffe, highly sheared and chloritized. Foliation 35 -40 deg core.										
228 - 345	Diorite (mass S) medium grained, grey-green, chloritic and sericitic, numerous chloritic and graphitic fractures, some fracture planes coated with film pyrite.										
345 - 347	Graphite, lumps of pyrite and altered diorite @ 347 contact 53 deg core axis.										
347 - 349	Altered diorite narrow graphite lenses and fractures @ 349, 2' of massive pyrite										
349 - 363	Acidic volcanics, massive pyrite, graphite.										
	353-354, 1' massive pyrite	3512	349	353	4.0	5005	1.02	0.02	0.01	nil	
	362-363, 1' core ground	3513	353	355	2.0	4.12	0.62	0.02	0.02	nil	
363 - 369	Diorite as above										

ENGINEER: [Signature]

DIAMOND DRILL HOLE RECORD, DDH No 8.3

SHEET No. 2

PROPERTY _____

CLAIM _____

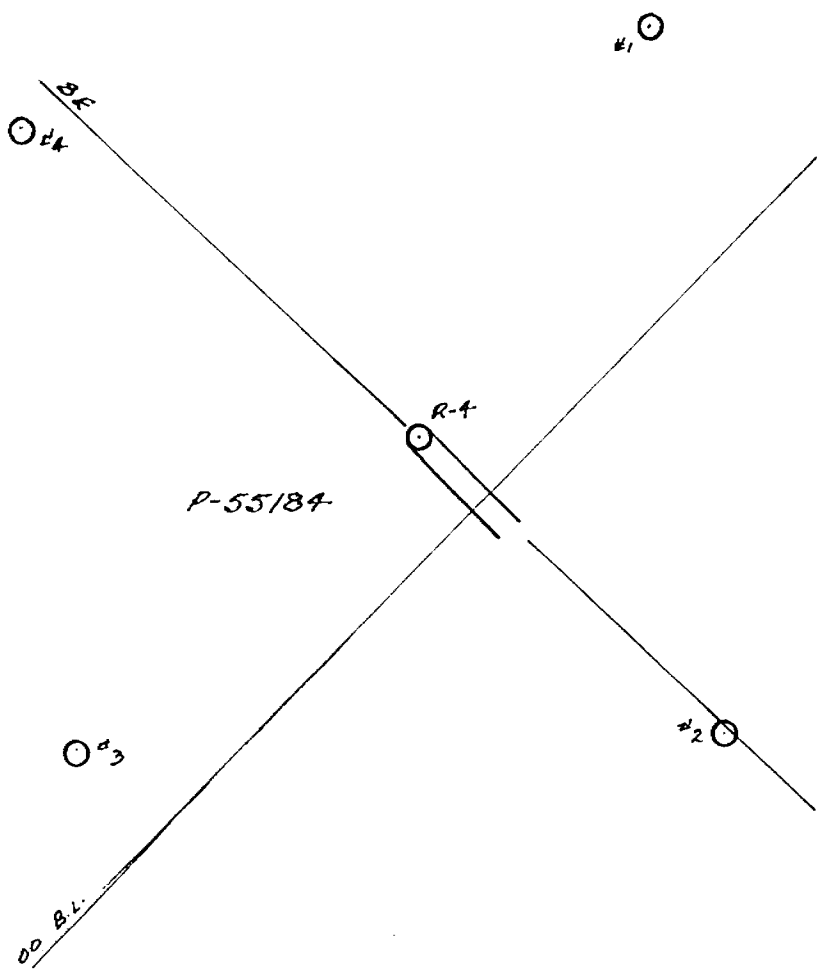
LATITUDE _____ BEARING _____ STARTED _____
 DEPARTURE _____ D.P. _____ COMPLETED _____
 ELEVATION _____ HORIZ. _____ VERT. _____ DEPTH _____

DRILLED BY _____

DEPTH - FEET	FORMATION	SAMPLE NO.	FROM	TO	WIDTH	VALUES					ECONOMIC GEOLOGY MINERALIZATION
						Pb	Hg	Cu	Mn	Zn	
368 - 369	Fine grained siliceous, carbonaceous well bedded sediments bedding 12 deg to core										
369 - 448	Rhyolite, fine grained, light grey to grey-green, highly fractured, fractures filled with pyrite, sulphide content approx. 10%.	3514	369	374	5.0	Tr	Tr	0.02	Tr	nil	
448 - END		3515	374	380	6.0	Tr	Tr	0.05	Nil	nil	
		3516	380	385	5.0	Tr	Tr	0.04	Nil	nil	

ENGINEER:

P-55184



Location Map
R-4
Reid Twp.
Scale 1" to 400'

DIAMOND DRILL HOLE RECORD, DDH No. 3. # 1

3. # 1

SHEET No. 2

PROPERTY: *...* CLAY: *...*
 COORDINATES: *...*
 BEARING: *...*
 STARTED: *April 1/66*
 DEPARTURE: *...*
 COMPLETED: *April 12/66*
 ELEVATION: *...*
 HORIZ.: *...* VERT.: *...*
 DEPTH: *522*

DRILLED BY: *...*

DEPTH FEET	DESCRIPTION	SAMPLE NO.	FROM	TO	WIDTH	VALUES	ECONOMIC GEOLOGY MINERALIZATION
0 - 216	Blank						
216 - 428	White, yellow, pinkish, crystalline 5'-10' shaly, silty, micaceous, gray, 5' micaceous with normal and basal dolomite, approx. 1% fine grained quartz, very highly fractured, all fractures planes disintegrated. 428-429 chert, 429, 2" micaceous fragments with surface disintegrating, along fracture.	3563	428	430	5.0		(2.5 ft. ground)
428 - 435	Quartzite with 10% sized garnet and chlorite quartzite	3564	430	435	5.0		(3.5 ft. ground)
435.5 - 450	Silicified shales, very fine grained highly fractured micaceous graphitic shales	3565	435	440	5.0		
450 - 456	Carbonaceous fragments, carbonitized, foliations parallel to core	3566	440	445	5.0		

ENGINEER: *J. Lewis*

DIAMOND DRILL HOLE RECORD, DDH No. B. # 4

PROPERTY _____ CLAIM _____
 LATITUDE _____ BEARING _____ STARTED _____
 DEPARTURE _____ DIP _____ COMPLETED _____
 ELEVATION _____ HORIZ. _____ VERT. _____ DEPTH _____
 DRILLED BY _____

DEPTH, FEET	FORMATION	SAMPLE NO.	FROM	TO	WIDTH	VALUES	ECONOMIC GEOLOGY MINERALIZATION
456 - 467	Mete-tuff? fine grained, light grey, argillaceous and somewhat micaceous, 2-3% fine microcrystalline pyrophyllite.						
467 - 469	Gabbro, contact facies chilled and bleached, showing porphyritic with hornblende lathes. @ 468 - 4" graphite @ 20 deg to core.						
	512 END						

ENGINEER: *[Signature]*

DIAMOND DRILL HOLE RECORD, DDH No. 1017

SHEET No. 1

DATE	TIME	DEPTH	DIP	STARTING	STOPPED

DEPTH	DESCRIPTION	REMARKS
0 - 10	Surface, topsoil, and vegetation.	
10 - 20	Lightly weathered granite.	
20 - 30	Medium weathered granite.	
30 - 40	Dark grey, medium grained granite.	
40 - 50	Dark grey, medium grained granite.	
50 - 60	Dark grey, medium grained granite.	
60 - 70	Dark grey, medium grained granite.	
70 - 80	Dark grey, medium grained granite.	
80 - 90	Dark grey, medium grained granite.	
90 - 100	Dark grey, medium grained granite.	
100 - 110	Dark grey, medium grained granite.	
110 - 120	Dark grey, medium grained granite.	
120 - 130	Dark grey, medium grained granite.	
130 - 140	Dark grey, medium grained granite.	
140 - 150	Dark grey, medium grained granite.	
150 - 160	Dark grey, medium grained granite.	
160 - 170	Dark grey, medium grained granite.	
170 - 180	Dark grey, medium grained granite.	
180 - 190	Dark grey, medium grained granite.	
190 - 200	Dark grey, medium grained granite.	

ENGINEER *R. L. [Signature]*

DIAMOND DRILL HOLE RECORD, DDH No. R. # 5

PROPERTY _____ CLAIM _____ SHEET No. _____

LATITUDE _____ BEARING _____ STARTED _____

DEPARTURE _____ DIP _____ COMPLETED _____

ELEVATION _____ HORIZ. _____ VERT. _____ DEPTH _____

DRILLED BY _____

DEPTH - FEET	FORMATION	SAMPLE NO.	FROM	TO	WIDTH	VALUES	ECONOMIC GEOLOGY MINERALIZATION
369 - 374	Chlorite, carbonated micritic schist.						
374 - 511	Amphibole (hornblende) chloritized, bleached pale grey-green.						
	511 END						

ENGINEER: *JF Steers*

DIAMOND DRILL HOLE RECORD, DDH No R. # 7

PROPERTY Reid Township CLAIM P- 55194 SHEET No. 1
 LATITUDE Line 10 W BEARING Grid N STARTED June 15/66
 DEPARTURE 3 00 S DIP. - 50 deg @ collar, 61 @ 180, 62 @ 469 COMPLETED June 28/66
 ELEVATION _____ HORIZ. _____ VERT. _____ DEPTH 469
 DRILLED BY Continental Diamond Drilling

DEPTH - FEET	FORMATION	SAMPLE NO.	FROM	TO	WIDTH	VALUES	ECONOMIC GEOLOGY MINERALIZATION
0 - 187	Casing						
187 - 296	Diorite, fine-grained, medium green, equigranular, @ 228 becoming coarse grained more mafic and amphibolitized with long circular fibrous, actinolite crystals, sparse disseminated pyrrhotite, a few fractures filled with pyrrhotite and hematite, trace chalcopryite.						
277 - 296	Contact facies chilled, bleached, highly fractured, fractures filled with pyrite pyrrhotite, hematite and graphite.						
296 - 311	Graphite with local pyrite and trace chalcopryite and local goethite and hematite						
311 - 469	Meta-diorite.						
	311-339 Contact facies, highly fractured and a few lithic fragments of siliceous						

P-55194

ENGINEER: *Stevens*

DIAMOND DRILL HOLE RECORD, DDH No. R. # 7

PROPERTY _____ CLAIM _____ SHEET No. 2

LATITUDE _____ BEARING _____ STARTED _____
 DEPARTURE _____ DIP. _____ COMPLETED _____
 ELEVATION _____ HORIZ. _____ VERT. _____ DEPTH _____
 DRILLED BY _____

DEPTH - FEET	FORMATION	SAMPLE NO.	FROM	TO	WIDTH	VALUES	ECONOMIC GEOLOGY MINERALIZATION
	material, feldspars altered and badly						
	broken enclosed in soft pale greenish						
	talcose? matrix.						
	339 Medium green, 60 - 40 feldspar mafic						
	ratio. Mafics seem to be entirely actinolite						
	light greenish, fibrous, ascicular crystals.						
	469 END						

ENGINEER:

DIAMOND DRILL HOLE RECORD, DDH No R. # 8

PROPERTY _____ CLAIM _____ SHEET No. 1
 LATITUDE Line 26 00 W BEARING Grid S STARTED _____
 DEPARTURE 6 00 N DIP. - 50 deg @ collar COMPLETED _____
 ELEVATION _____ HORIZ. _____ VERT. _____ DEPTH 258
 DRILLED BY Continental Diamond Drilling

DEPTH - FEET	FORMATION	SAMPLE NO.	FROM	TO	WIDTH	VALUES				ECONOMIC GEOLOGY MINERALIZATION
0 - 205	Casing									
205 - 258	Andesite, fine grained, light grey-green, heavily carbonitized, sparse disseminated pyrite.									
	258 END									

ENGINEER: *J. Steers*

DIAMOND DRILL HOLE RECORD, DDH No

R-9

P. 55-183

PROPERTY Reid Township, (Detail Grid "A")

CLAIM _____

SHEET No. 1

LATITUDE Line 6N

BEARING Grid E

STARTED July 2/66

DEPARTURE 1 50 W

DIP. -50 deg. @ collar, -63 deg. @ 292

COMPLETED July 12/66

ELEVATION _____

HORIZ. _____ VERT. _____

DEPTH 302

DRILLED BY Continental Diamond Drilling

DEPTH - FEET	FORMATION	SAMPLE NO.	FROM	TO	WIDTH	VALUES				ECONOMIC GEOLOGY MINERALIZATION
0 - 160	Overburden									
160 - 212	Andesite, fine grained, medium green chloritic, highly fractured, trace of Pyrite.									
212 - 302	Overburden Large quantities of water @ 292 302 - Hole abandoned, casing broken @ 292.									

ENGINEER:

DIAMOND DRILL HOLE RECORD, DDH No R-10

PROPERTY Reid Township CLAIM _____ SHEET No. 2
 LATITUDE Line 14 West BEARING Grid North STARTED _____
 DEPARTURE 14 00 South DIP. - 50 @ collar, 64 @ 300, 62 @ 690 COMPLETED _____
 ELEVATION _____ HORIZ. _____ VERT. _____ DEPTH 693
 DRILLED BY Continental Diamond Drilling

DEPTH - FEET	FORMATION	SAMPLE NO.	FROM	TO	WIDTH	VALUES				ECONOMIC GEOLOGY MINERALIZATION
0 - 190	Casing									
190 - 693	Peridotite-serpentinized medium to coarse grained with 30-50% serpentine & talc- fractures coated with serpentine & talc whole highly magnetic, core extremely fractured, core ground 239-241; 248-250; 253-256; 257-258.									
	510-693 Extremely magnetic with fractures highly conductive. Extreme serpentine development with up to 30% magnetite and some graphite mixed with magnetite.									
	693 - END.									

55-199
(Handwritten signature/initials)

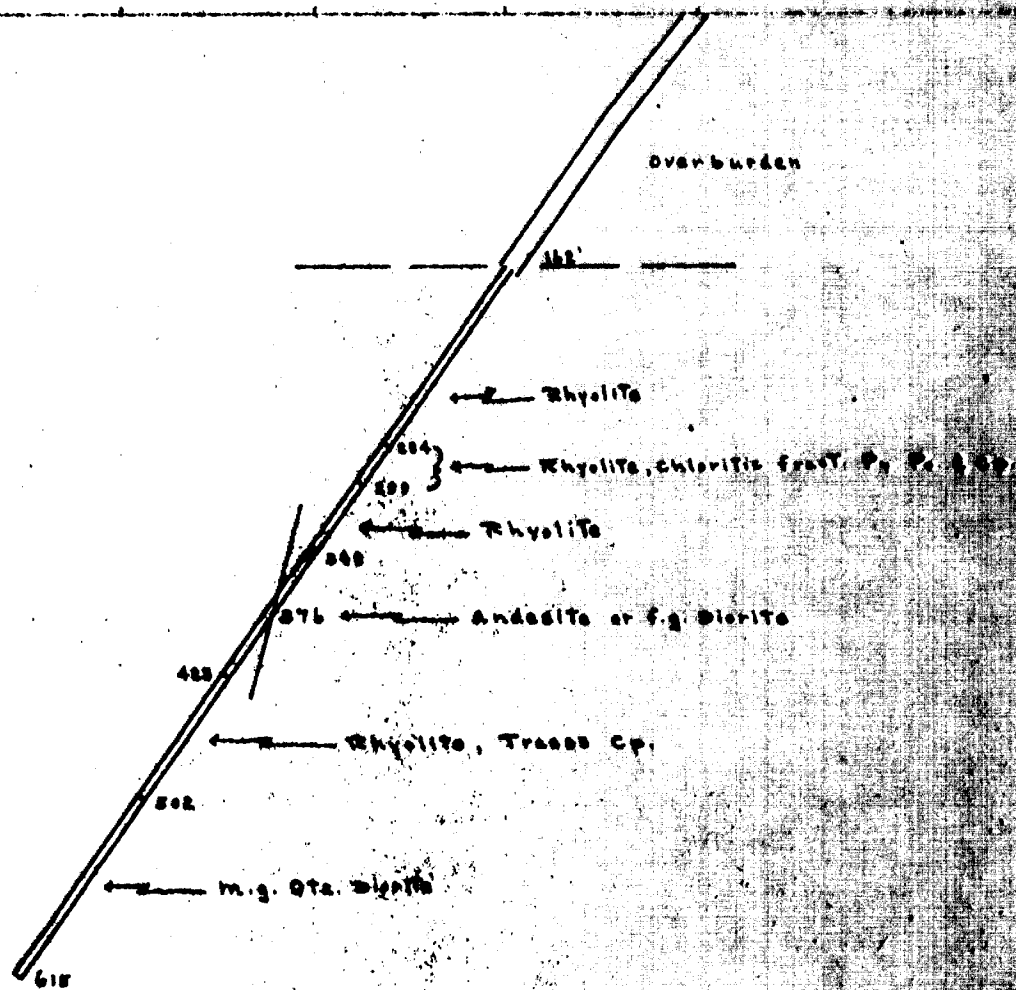
2-N

1-N

B.L.

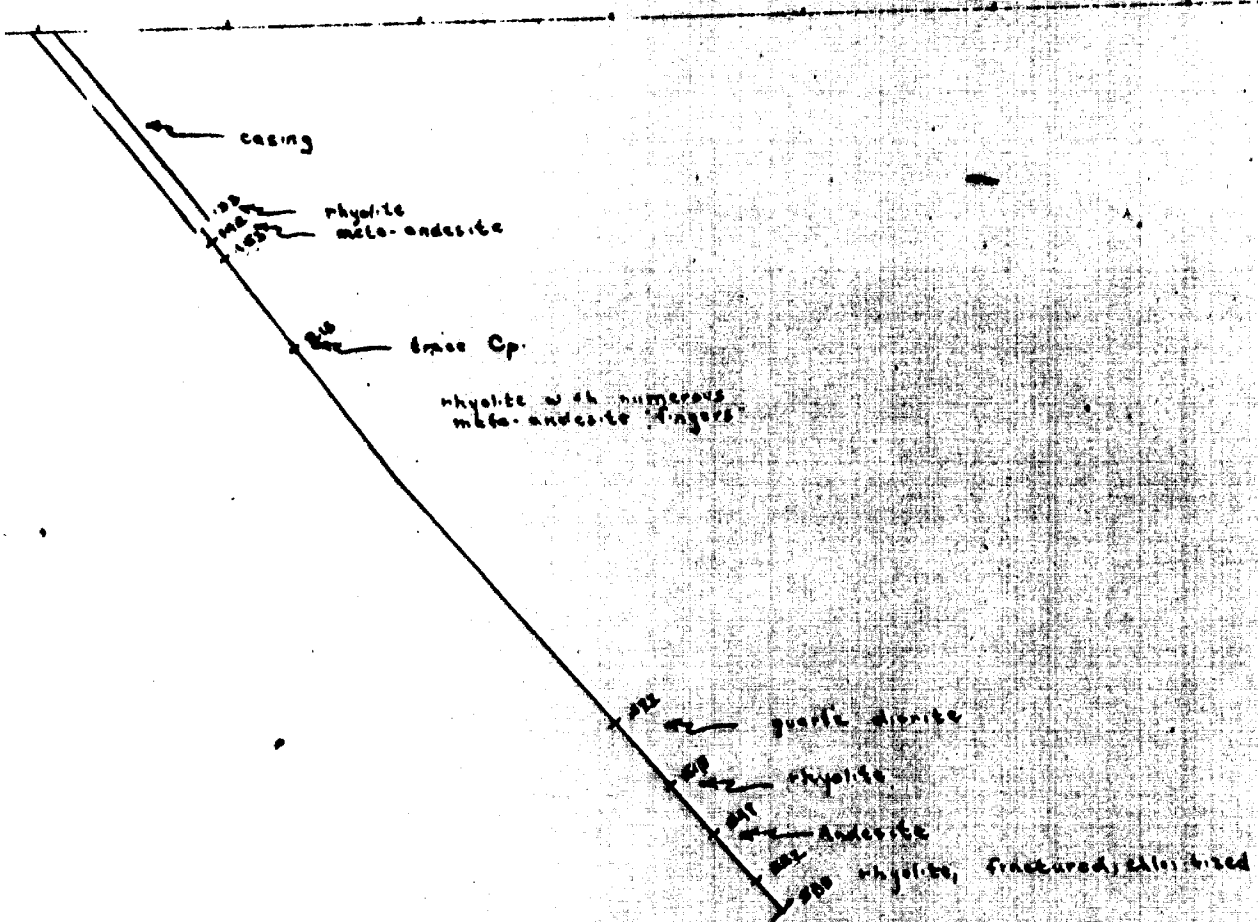
1-S

2-S



P-83389
Reed

027 13273333



casing

rhyolite
meta-andesite

10000 Cp.

rhyolite with numerous
meta-andesite "fingers"

quartz monite

rhyolite

Andesite

rhyolite, fractured, chloritized

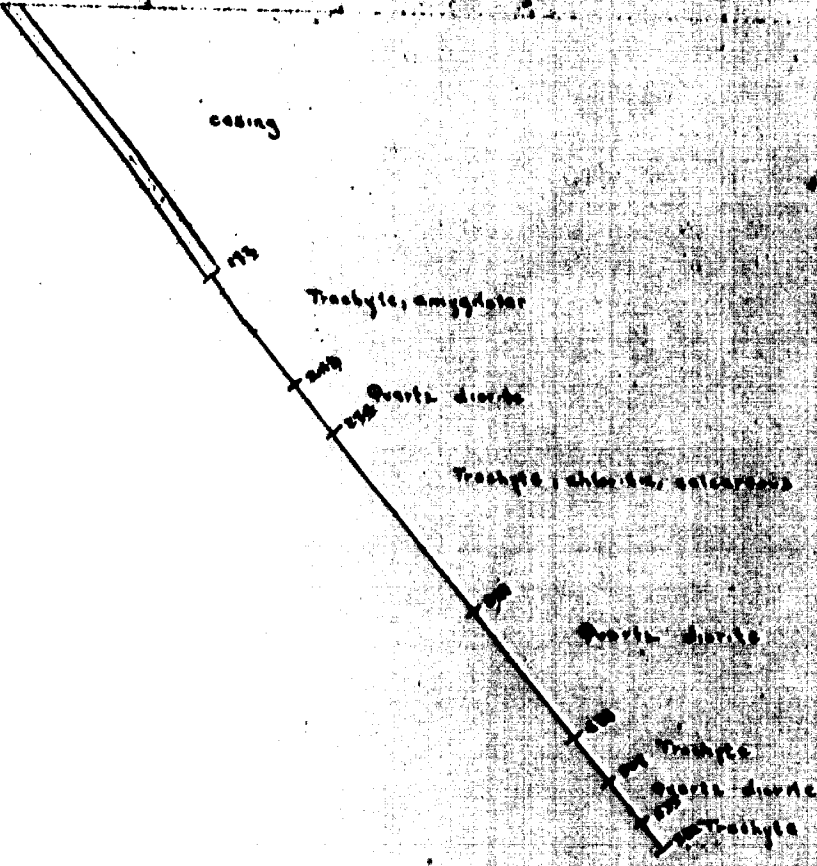
M. P. 3330

200 South

100 South

100 East

100 North



DIAMOND DRILL HOLE RECORD, DDH No

R-12

PROPERTY Reid Township

CLAIM 83389

SHEET No. 1

LATITUDE 6400 W

BEARING Grid N

STARTED Aug 27/66

DEPARTURE 2100 S

DIP. -60° @ collar, -55° @ 150, -55° @ 500

COMPLETED Sept 11/66

ELEVATION _____

HORIZ. _____ VERT. _____

DEPTH _____

DRILLED BY Continental Diamond Drilling

DEPTH - FEET	FORMATION	SAMPLE NO.	FROM	TO	WIDTH	VALUES			ECONOMIC GEOLOGY MINERALIZATION
						Au.	Ag.	Cu.	
0 - 162	Casing								
162 - 348	Rhyo-Dacite, fine grained pale greenish, a few tiny quartz phenocrysts, vaguely foliated with chloritic development.	3579	284.5	289.5	5.0	0.02	0.16	1.03	
162 - 180	6' core ground locally rock vesicular, locally gritty	3580	289.5	294.5	5.0	Tr.	Tr.	0.08	Chloritic fracture zones with 7-1
162 - 275	heavily carbonitized.	3581	294.5	299.0	5.0	Tr.	0.06	0.24	Pyrite, Pyrrhotite, Chalcopyrite.
275 - 325	Bleached, chloritized, badly fractured.								
348 - 376	Andesite becoming medium grained diorite mildly carbonitized lower contact 20 deg. core axis								
376 - 423	Andesite fine grained massive medium green								
423 - 502	Phyo-dacite as above with occasional chalcopyrite trace.								
502 - 615	Quartz diorite, fine to medium grained, massive equigranular somewhat carbonitized.								
615 - END.									

ENGINEER _____

DIAMOND DRILL HOLE RECORD, DDH No R - 13

PROPERTY Reil TownshipCLAIM P-83389SHEET No. 1LATITUDE 1240 WBEARING Grid NSTARTED DEPARTURE 240 SDIP. -50° @ collar, -55 1/2° @ 133, -50° @ 550COMPLETED ELEVATION HORIZ. VERT. DEPTH DRILLED BY Continental Diamond Drilling

DEPTH - FEET	FORMATION	SAMPLE NO.	FROM	TO	WIDTH	VALUES				ECONOMIC GEOLOGY MINERALIZATION
0 - 133	Casing									
133 - 142	Rhyolite, fine grained, light grey green carbonitized.									
142 - 153	Meta-andesite? mottled dark, light green chloritic highly carbonitized.									
153 - 472	Rhyolite as above.									
	163 - 166 Meta-andesite or Diorite as above									
	185-187; 194-197 Meta andesite.									
	rhyolite, locally spherulitic vague foliation 45-50 deg to core.									
	204 - 213 Meta-andesite.									
	213 rhyolite tuffaceous with trace chalcopryite									
	264 - 273 Meta-andesite @ 315-316 brecciated									
	lower contact sharp 70 deg. core.									
	325 - 345 Meta-andesite.									
	360 - 362 Chilled dikelet.									

ENGINEER: R. Steers

DIAMOND DRILL HOLE RECORD, DDH No

R - 14

PROPERTY Reid Township

CLAIM _____

SHEET No. 1

LATITUDE ~~27°~~ 8400W

BEARING Grid N

STARTED _____

DEPARTURE ~~2700S~~ 1475S

DIP. Secular, 54° @ 100, 58° @ 500

COMPLETED _____

ELEVATION _____

HORIZ. _____ VERT. _____

DEPTH _____

DRILLED BY Continental Diamond Drilling

DEPTH - FEET	FORMATION	SAMPLE NO.	FROM	TO	WIDTH	VALUES			ECONOMIC GEOLOGY MINERALIZATION
0 - 172	Casing								
172 - 243	Trachyte, fine grained to aphanitic locally vesicular (appears to have been angular but amygdules dissolved) locally chloritic with considerable quartz, carbonate alteration.								
182 - 184	Rhyolite? pale creamy white with chloritic patches and minor carbonate locally aphanitic patches chilled looking bleached rapidly becoming fine grained and highly calcareous.								
243 - 274	Quartz diorite, fine-medium grained equigranular, calcareous, local minor pyrite.								
250 - 252	hematite staining along fractures, trace chalcopyrite.								
274 - 391	Trachyte, medium grey-green chloritic.								

ENGINEER [Signature]

DIAMOND DRILL HOLE RECORD, DDH No

R - 14

PROPERTY _____

CLAIM _____

SHEET No. 2

LATITUDE _____

BEARING _____

STARTED _____

DEPARTURE _____

DIP. _____

COMPLETED _____

ELEVATION _____

HORIZ. _____

VERT. _____

DEPTH _____

DRILLED BY _____

DEPTH - FEET	FORMATION	SAMPLE NO.	FROM	TO	WIDTH	VALUES				ECONOMIC GEOLOGY MINERALIZATION
	locally bleached silicified, calcareous.									
	304 - 313 a few quartz diorite tongues-									
	lightly pyritized with trace chalcopyrite									
	305 - highly brecciated, somewhat									
	chloritized.									
391 - 478	Quartz diorite as before contacts chilled									
	irregular.									
	401 - 408 Calcite vienlet									
478 - 507	Trachyte, dacite as before									
507 - 535	Quartz diorite as before									
535 - 552	Trachyte as before									
	552 - END									

[Handwritten Signature]

DIAMOND DRILL HOLE RECORD, DDH No. R-15

 PROPERTY Reid Twp.

 CLAIM P. 85160

SHEET No. _____

 LATITUDE Line 34 N

 BEARING Grid South

 STARTED Nov. 1, 1966

 DEPARTURE 9 50 N of 20 00 N B.L.

 DIP. - 50

 COMPLETED Nov. 7, 1966

ELEVATION _____

HORIZ. _____ VERT. _____

 DEPTH 675

 DRILLED BY Continental Diamond Drilling

DEPTH - FEET	FORMATION	SAMPLE NO.	FROM	TO	WIDTH	VALUES				ECONOMIC GEOLOGY MINERALIZATION
0-175	Casing									
175-363	Diabase:- 175-200, chilled, very dark, fine grained, a few epidote knots. 200-350, medium grained, generally ophitic texture, well developed, occasional epidote knot. 350-363, chilled again.									
363-600	Felsitic tuffs, incipient foliation, 30°-40° core, pale grey green to yellow green, pervasive hematite stain 575-600, a few highly conductive pyrrhotite fractures.									
600-675	Felsite:- fine grained, dark grey, uniformly carbonitized, hardness about 4.									
	675 end.									

P. 85160

ENGINEER: _____



DIAMOND DRILL HOLE RECORD, DDH No R-16 B 7

PROPERTY Reid Twp CLAIM _____ SHEET No. _____

LATITUDE line 6 west BEARING Grid South STARTED _____

DEPARTURE 5 to N DIP. -60° @ collar, -60° @ 210, -62° @ 258' COMPLETED _____

ELEVATION — HORIZ. _____ VERT. _____ DEPTH _____

DRILLED BY Continental Diamond Drilling

DEPTH - FEET	FORMATION	SAMPLE NO.	FROM	TO	WIDTH	VALUES				ECONOMIC GEOLOGY MINERALIZATION
0 - 204	Casing									
204 - 350	Talc-chlorite-hematite schist, foliation parallel to core axis, narrow seams hematite parallel to chlorite-talc lamina.									
	221-224 core ground									
	225-227 core ground									
	230-232 core ground									
	233-234 core ground									
	237-242 core ground									
	256-258 core ground									
	locally minor pyrite, from 250 some disseminated carbonaceous material foliation-nearly obliterated									
	316-319.5 core ground									
	320-357 fragmental recovery, carbonaceous									

ENGINEER: _____

DIAMOND DRILL HOLE RECORD, DDH No

R - 16 B ?

PROPERTY _____

CLAIM _____

SHEET No. 2

LATITUDE _____

BEARING _____

STARTED _____

DEPARTURE _____

DIP. _____

COMPLETED _____

ELEVATION _____

HORIZ. _____

VERT. _____

DEPTH _____

DRILLED BY _____

DEPTH - FEET	FORMATION	SAMPLE NO.	FROM	TO	WIDTH	VALUES				ECONOMIC GEOLOGY MINERALIZATION
	foliation planes highly conductive									
350 - 420	Talc chlorite calcite-quartz schist- pale pearly grey with thin hematite and graphite partings									
	@ 440 bedding 25 deg. to core.									
	443 - 473 heavily carbonaceous highly conductive bedding parallel to 10 deg. E888 axis.									
	Lost core 457-459, 460-463. a few lumps & stringers of pyrite.									
	473 - 480 dark grey fine grained mica- eous tuff?									
480-552	Rhyolitic tuff, pale greenish grey-quartz carbonate tuff, minor pyrite, fracture planes coated with sugary quartz and he- avy goethite staining locally matrix hematite minor pyrite. 552 END									

ENGINEER: _____

[Signature]

CLAIM

30 MIN.

SHEET No. 2

LATITUDE

BEARING

STARTED

Nov 26 1966

DEPARTURE

DIP. 30° @ contact, 55° @ 90', 50° @ 50'

COMPLETED

Dec 10 1966

ELEVATION

HORIZ. VERT.

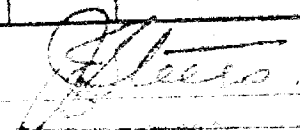
DEPTH

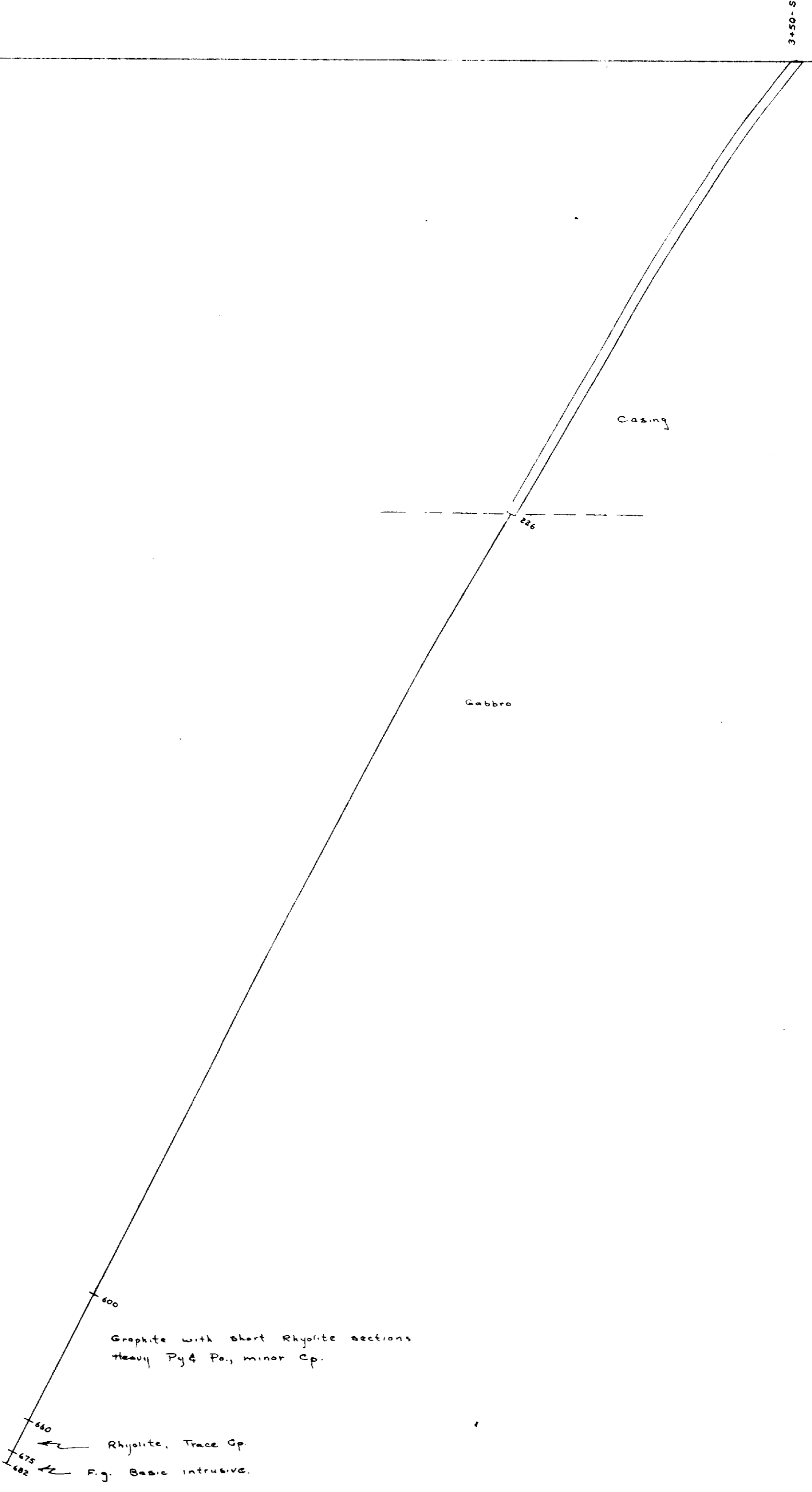
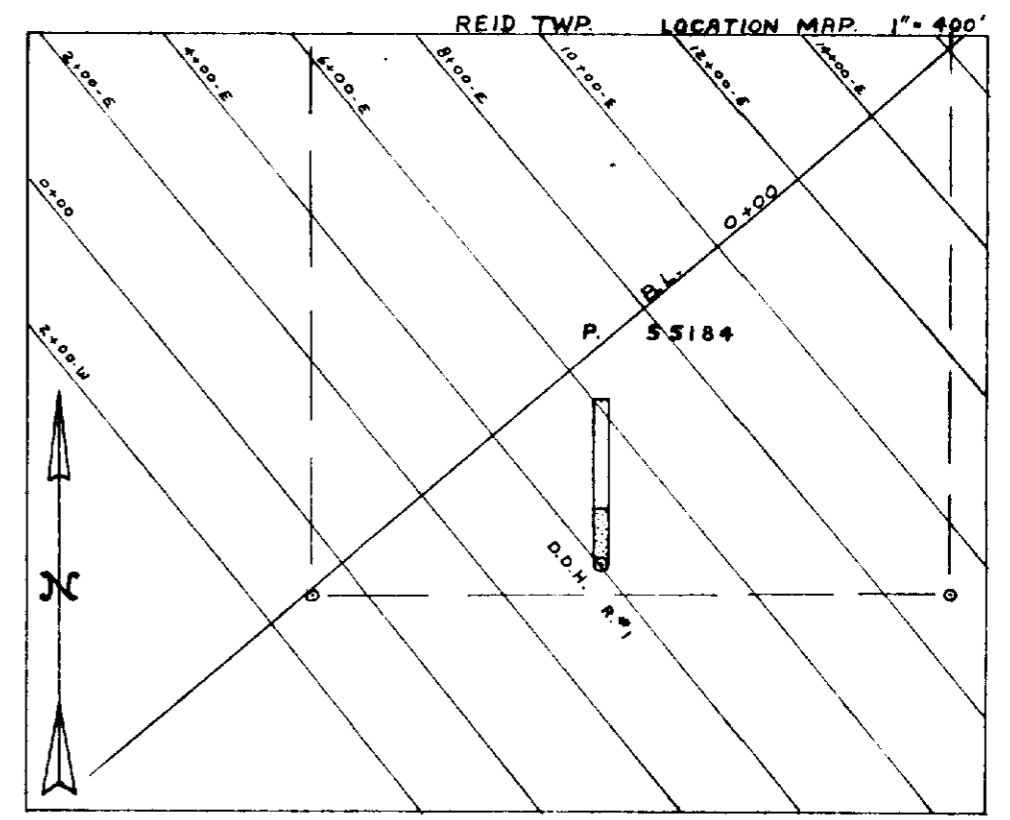
572

DRILLED BY

DEPTH - FEET	FORMATION	SAMPLE NO.	FROM	TO	WIDTH	VALUES	ECONOMIC GEOLOGY MINERALIZATION
0 - 90	Casing						
90-288	Serpentinized peridotite, fine grained equigranular dark green to black, highly magnetic, carbonitized, with talc-serpentine, carbonate development along fractures, numerous quartz-carbonate veinlets.						
288-312	Contact area, gradational change.						
312-519	Meta-andesite becoming medium grained equigranular fresh looking quartz diorite.						
519-526	Mafic dike, fine grained with dark matrix with approx. 5% altered feldspar phenocrysts upper lower contacts 30 deg. to core.						
526-545.5	Quartz diorite as before						
545.5-572	Andesite porphyry or porphyry phase of quartz diorite with fine grained matrix.						
	572 - END						

ENGINEER.





MESPI MINES LTD.
REID TOWNSHIP.

DDH. R. #1.

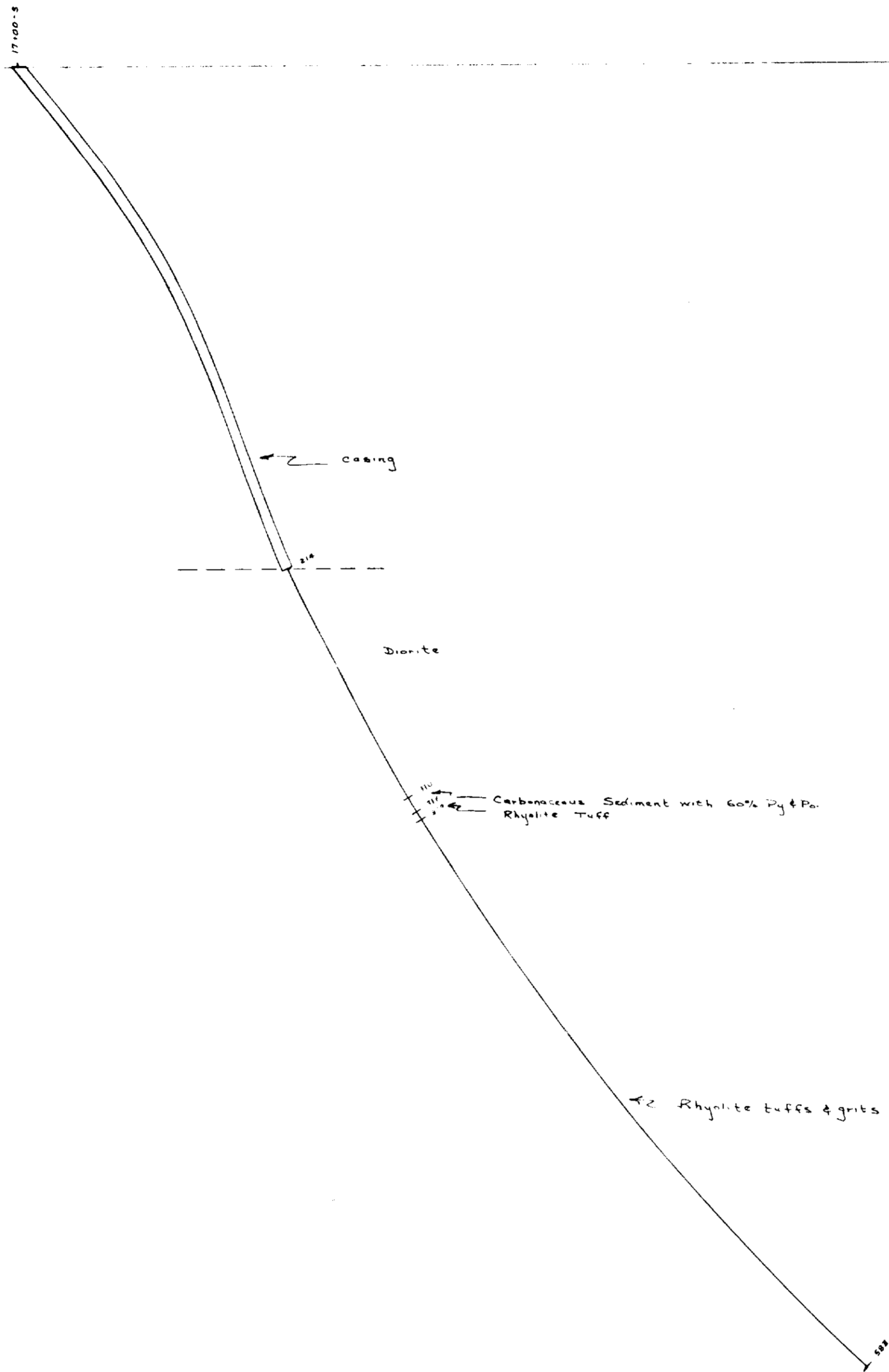
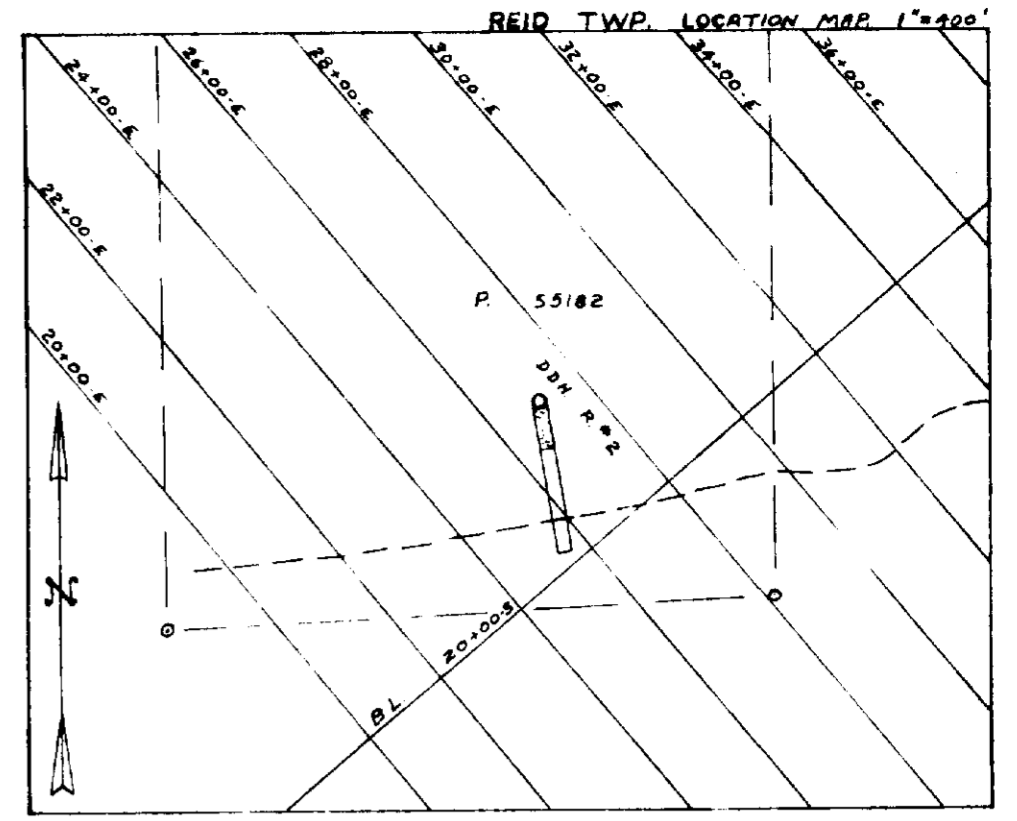
CLAIM P. 55184

SECTION BEARING NORTH (AST)
LOOKING EAST.

SCALE . 1" = 40'



42A135E0131 25 REID



MESPI MINES LTD.
 REID TOWNSHIP.

DDH. R #2.
 CLAIM P. 55182
 SECTION BEARING SOUTH -10° E. (AST.)
 LOOKING EAST.

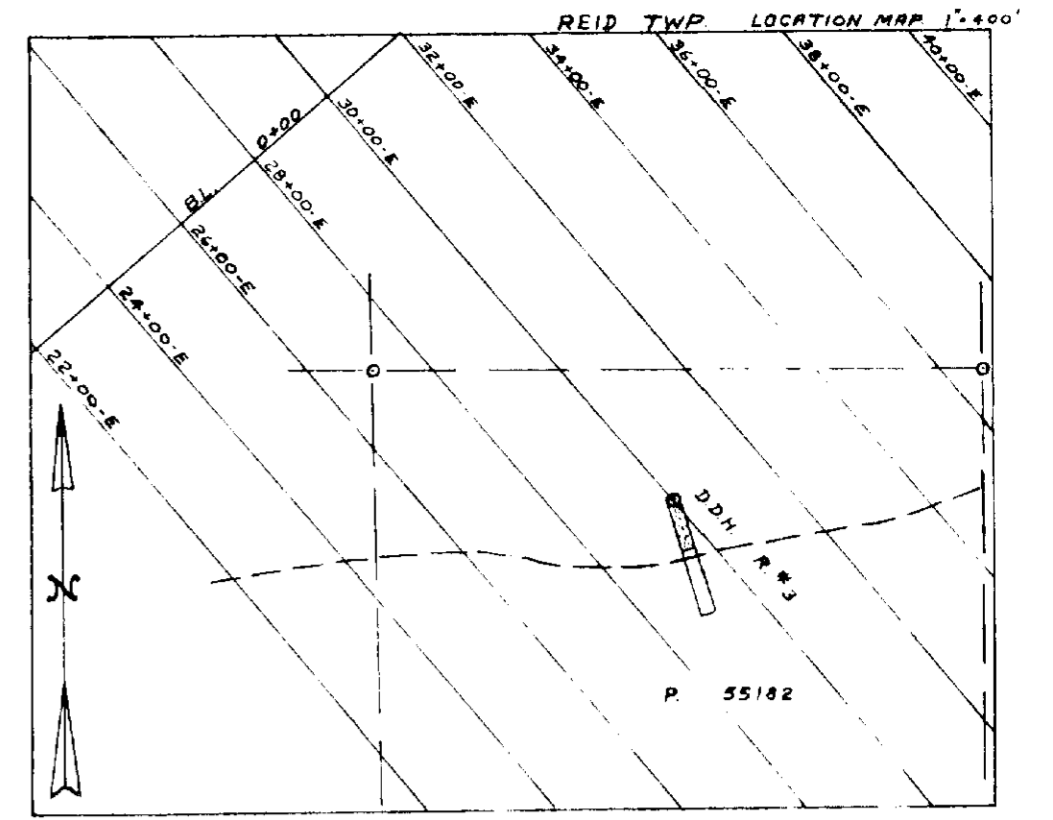
SCALE: 1" = 40'

MAY. 4/66.

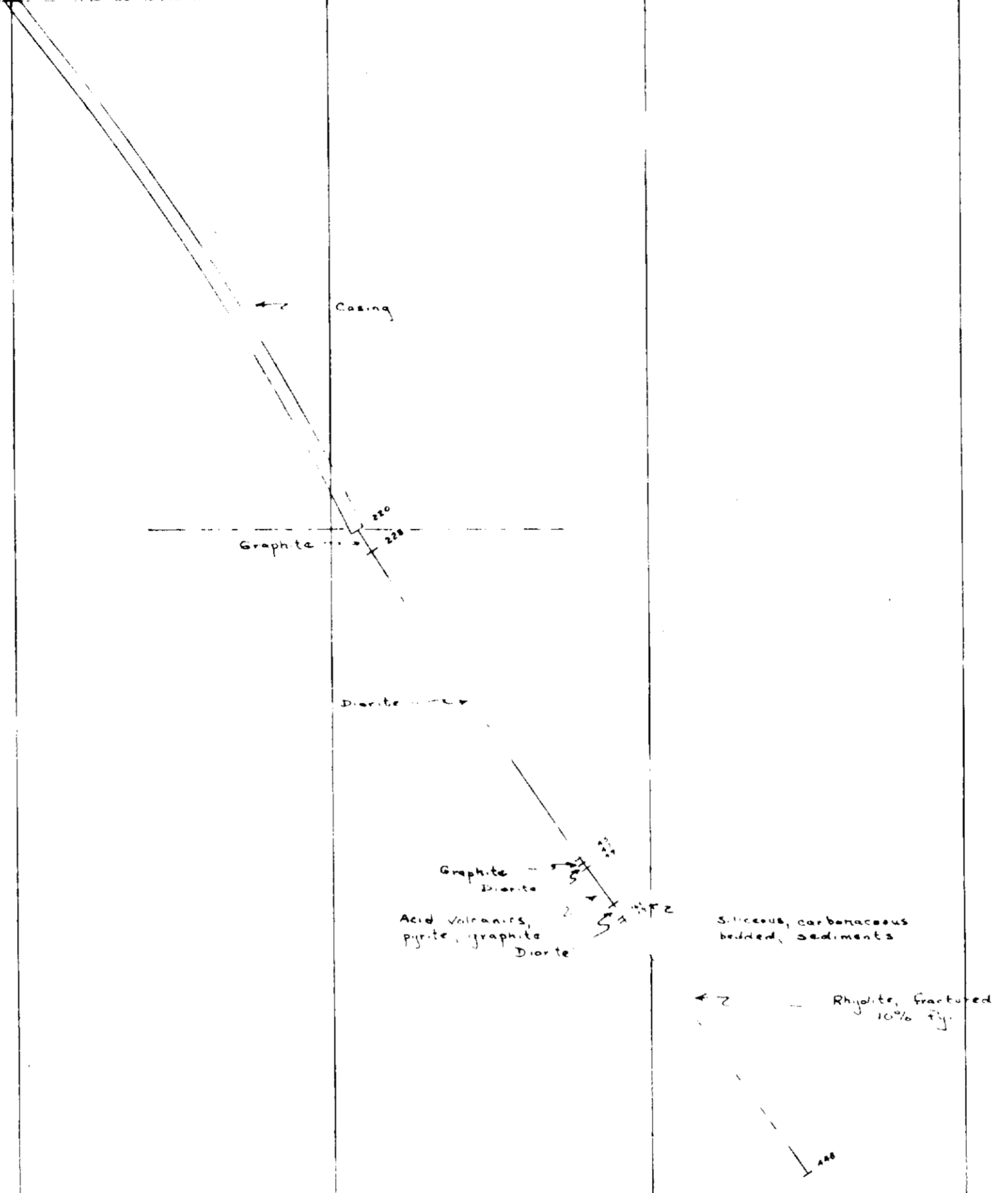
J. Glass



42A135E0131 25 REID



10+00.0 12+00.0 13+00.0 14+00.0 15+00.0



MESPI MINES LTD.
 REID TOWNSHIP.

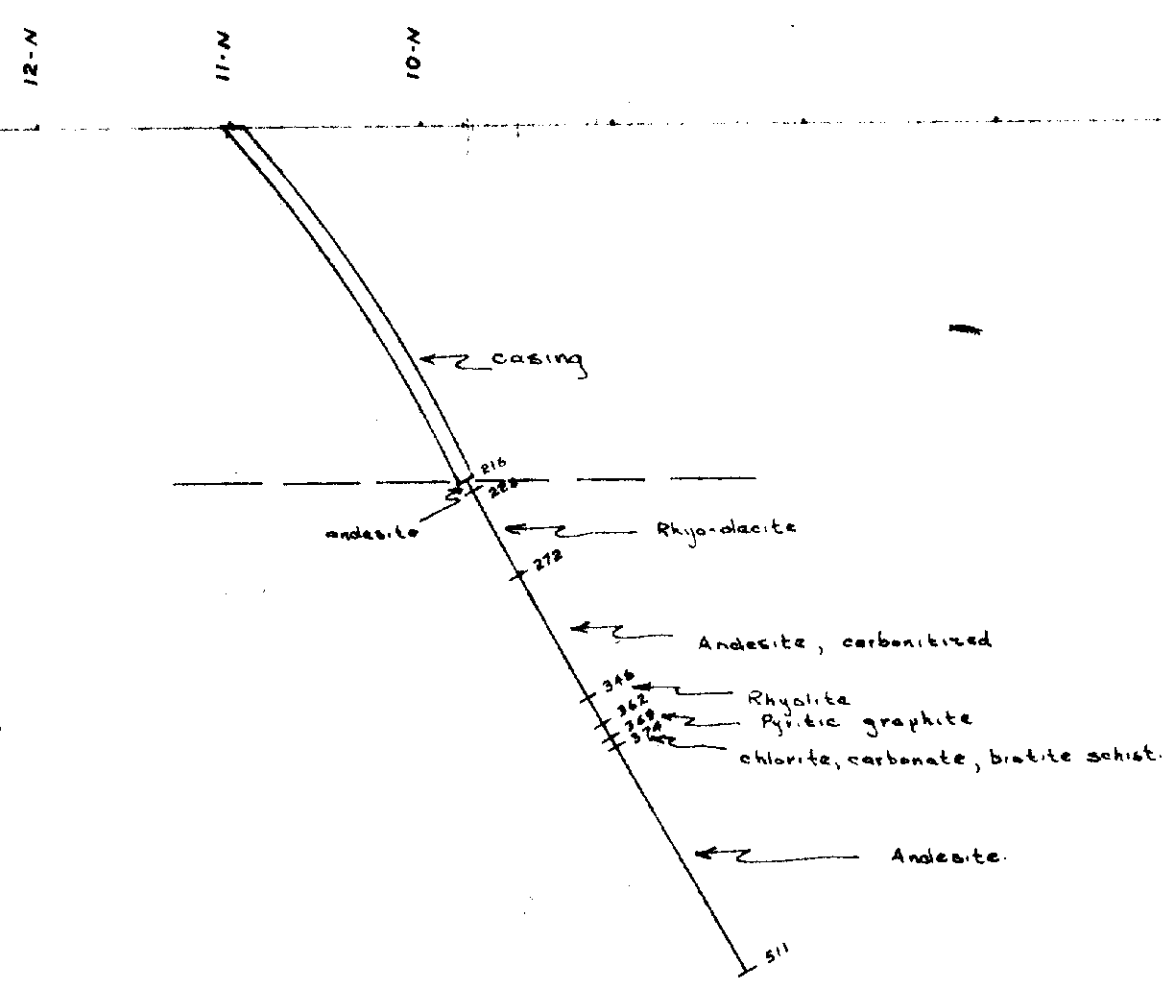
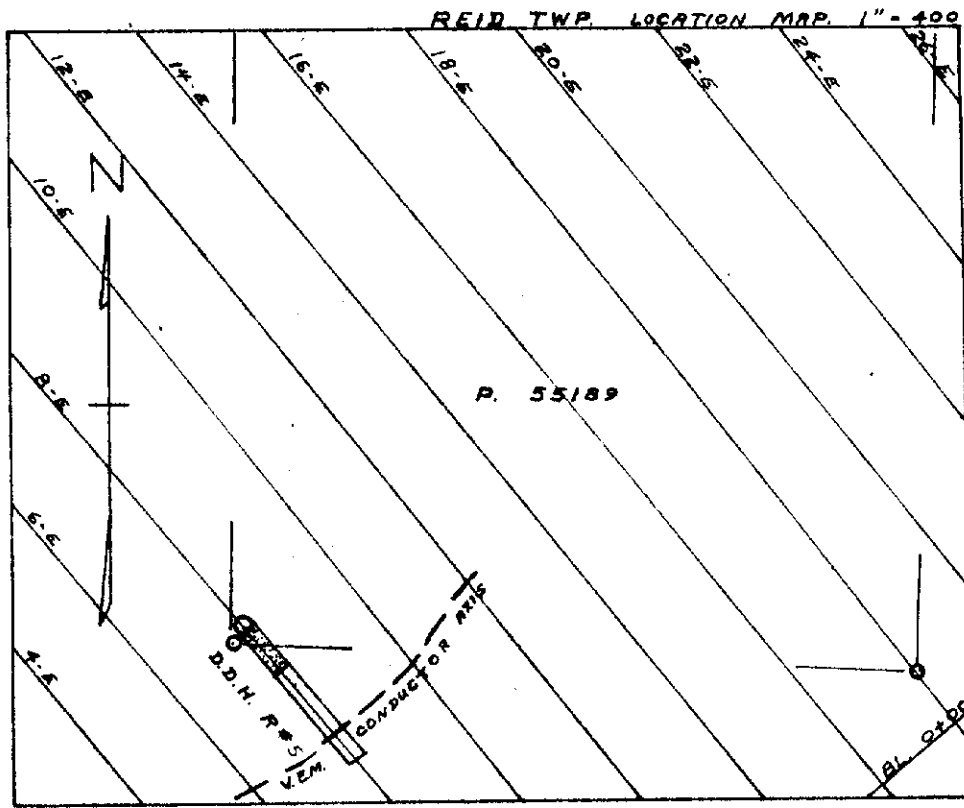
D.D.H. R.# 3
 CLAIM P 55182
 SECTION BEARING S-34° W. (Grid bearing.)
 LOOKING EAST

SCALE: 1" = 40'

MAY 3/66

J. H. H. H.





P. 55189

MESPI MINES LTD.
 REID TOWNSHIP.

DD.H R # 5
 CLAIM P. 55189
 SECTION BEARING GRID SOUTH
 LOOKING EAST

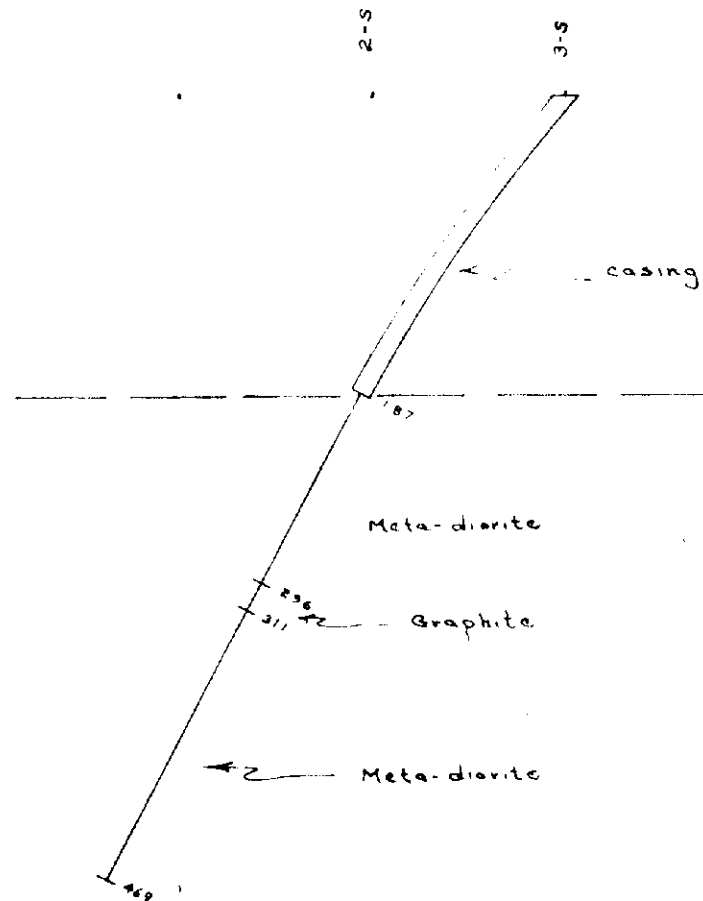
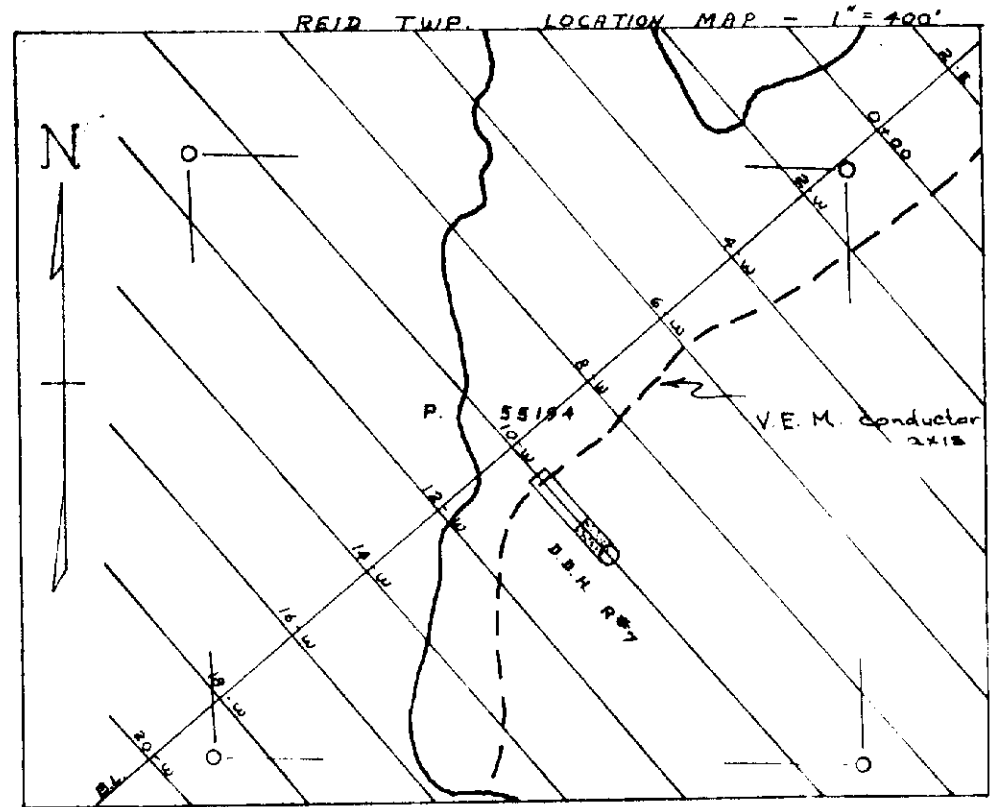
SCALE 1" = 100'

DATE: JULY, 27. 66.

[Signature]



42A135E0131 25 REID



MESPI MINES LTD.
 REID TOWNSHIP.

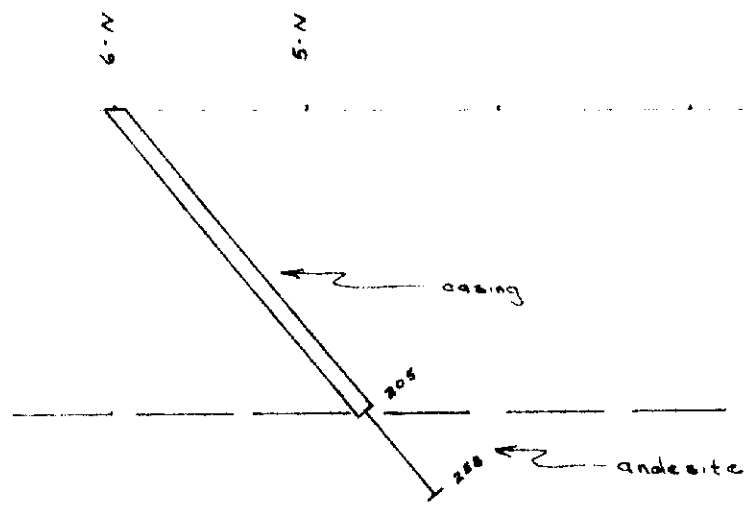
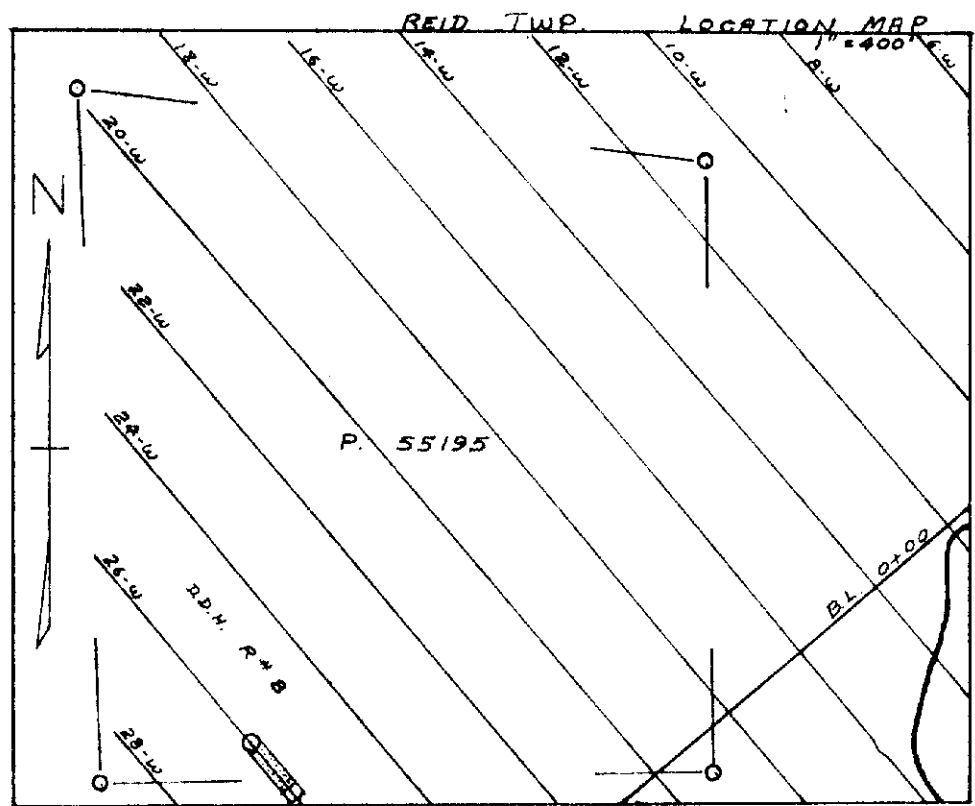
DDH R#7
 CLAIM P. 55194
 SECTION BEARING GRID NORTH.
 LOOKING EAST

SCALE 1" = 100'

DATE JULY, 27/68,
J. Steers



42A135E0131 25 REID

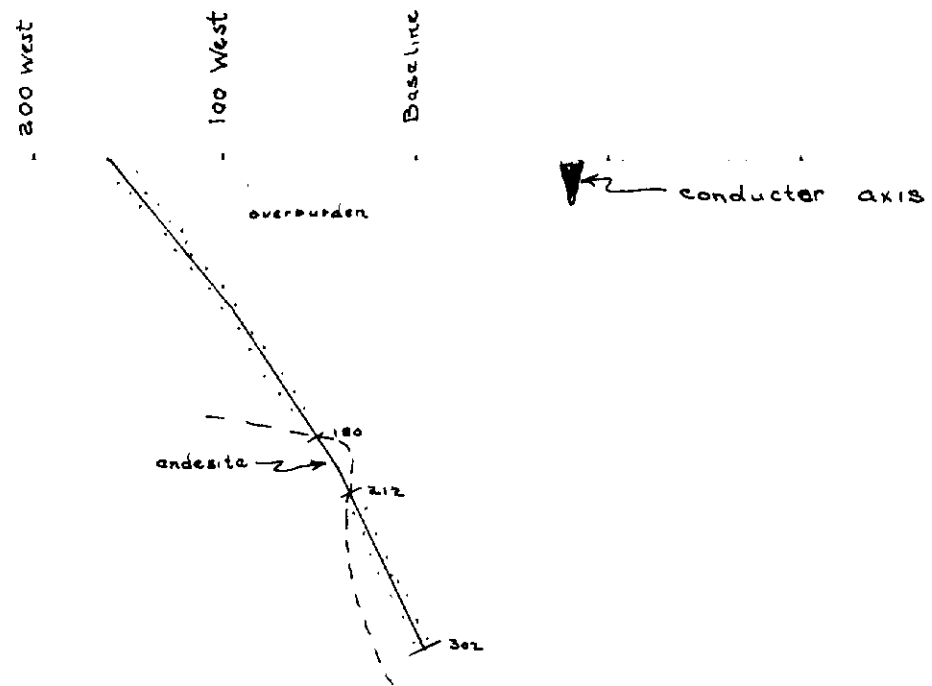
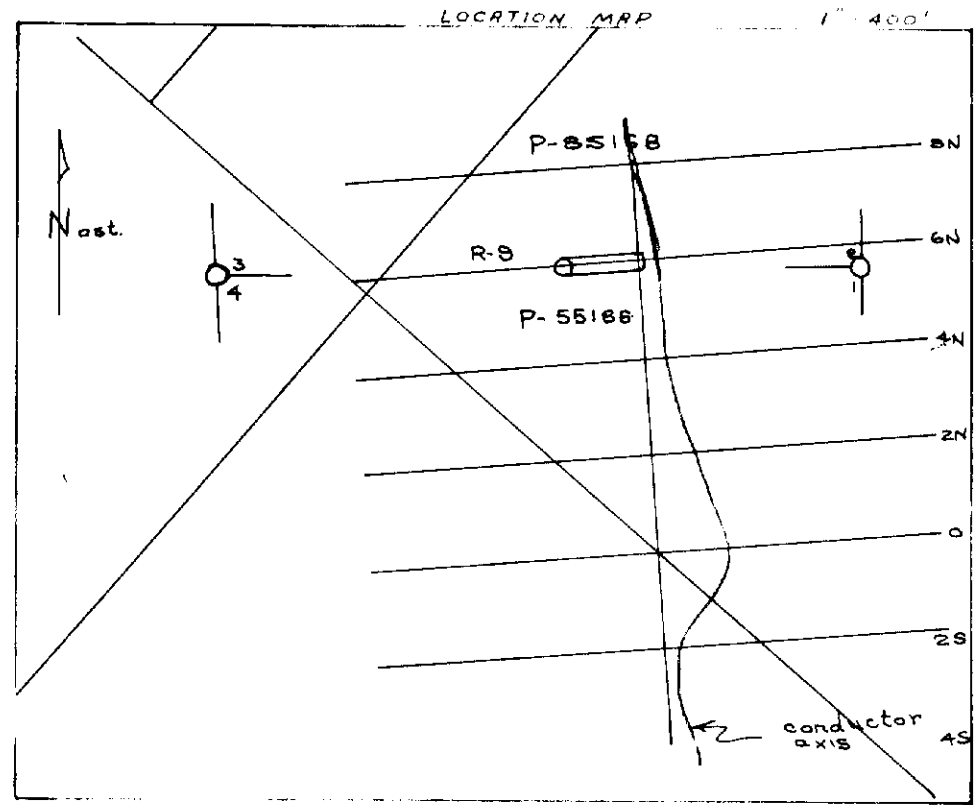


P. 55195

MESPI MINES LTD.
 REID TOWNSHIP.
 DDH. R#8
 CLAIM P. 55195
 SECTION BEARING GRID SOUTH
 LOOKING EAST
 SCALE 1" = 100'
 DATE: JULY, 27/66.
J. Steers



42A135E0131 25 REID



MESPI MINES LTD.
TOWNSHIP.

DLH # R-9
CLAIM P. 55186
SECTION BEARING GRID EAST

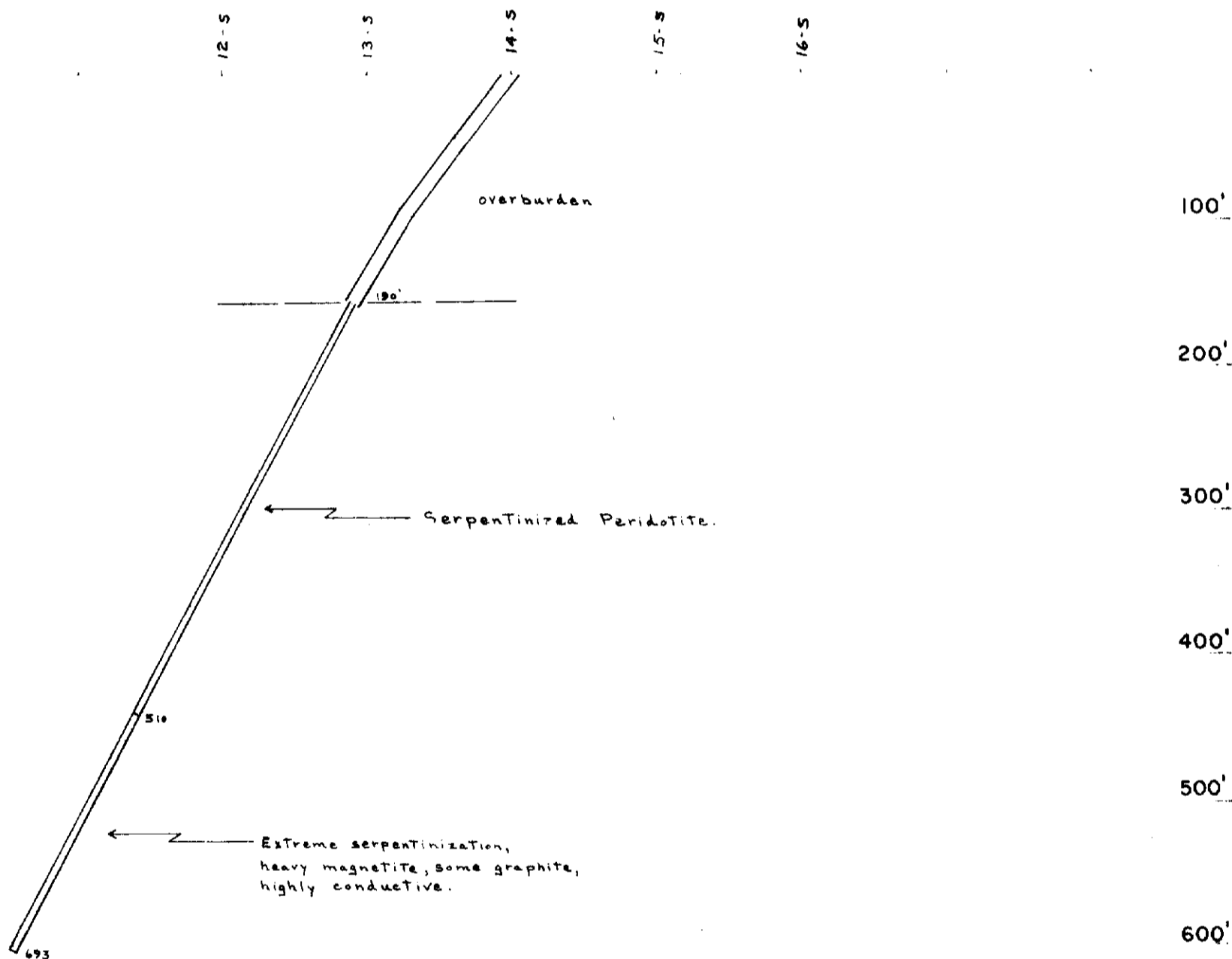
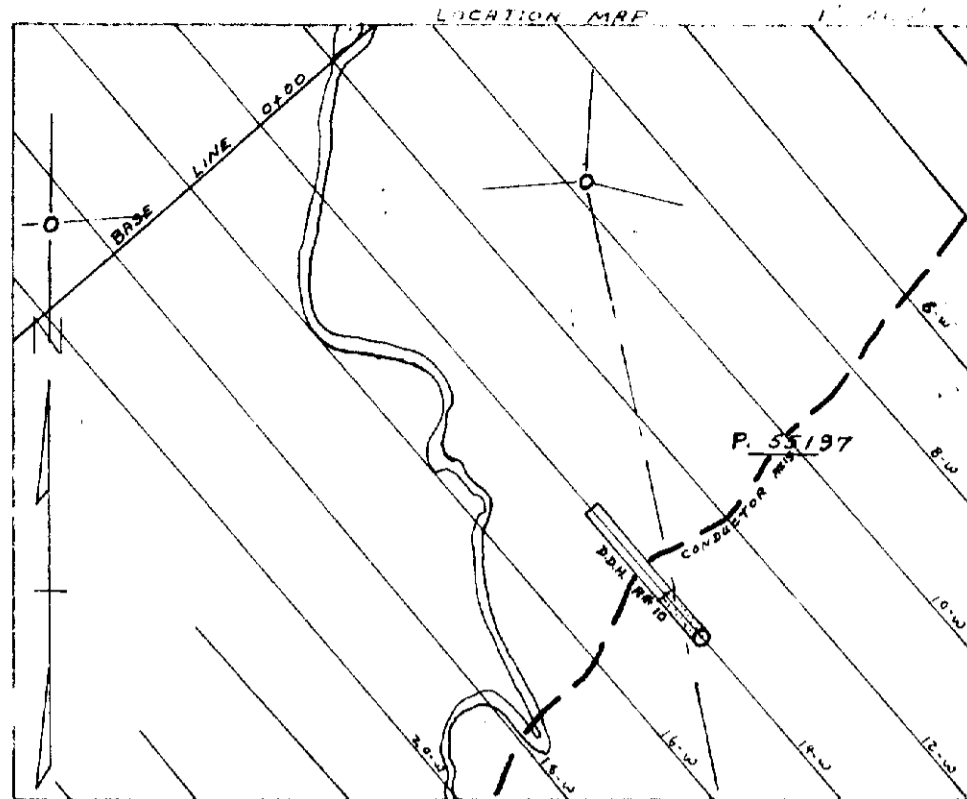
SCALE 1" = 100'

DATE Oct. 15/4

J. Steets



42A135E0131 25 REID

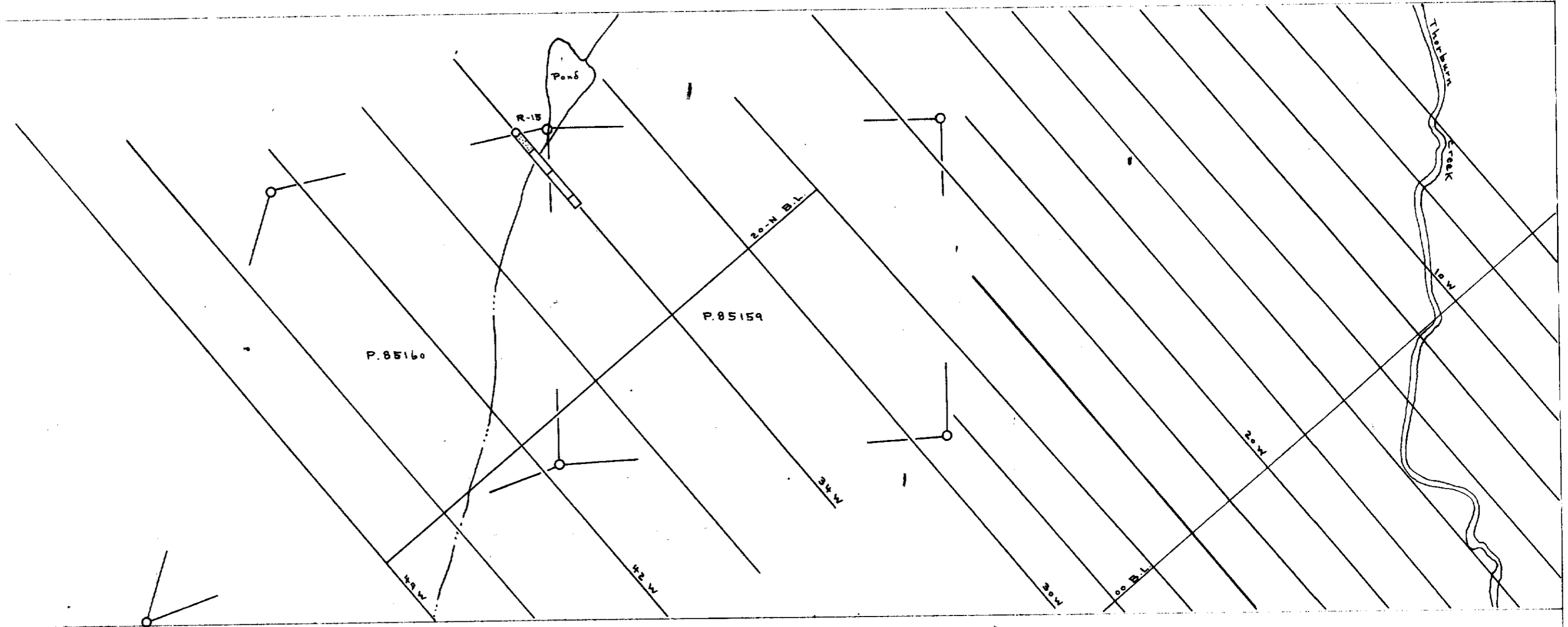


MESPI MINES LTD.
 REID TOWNSHIP.

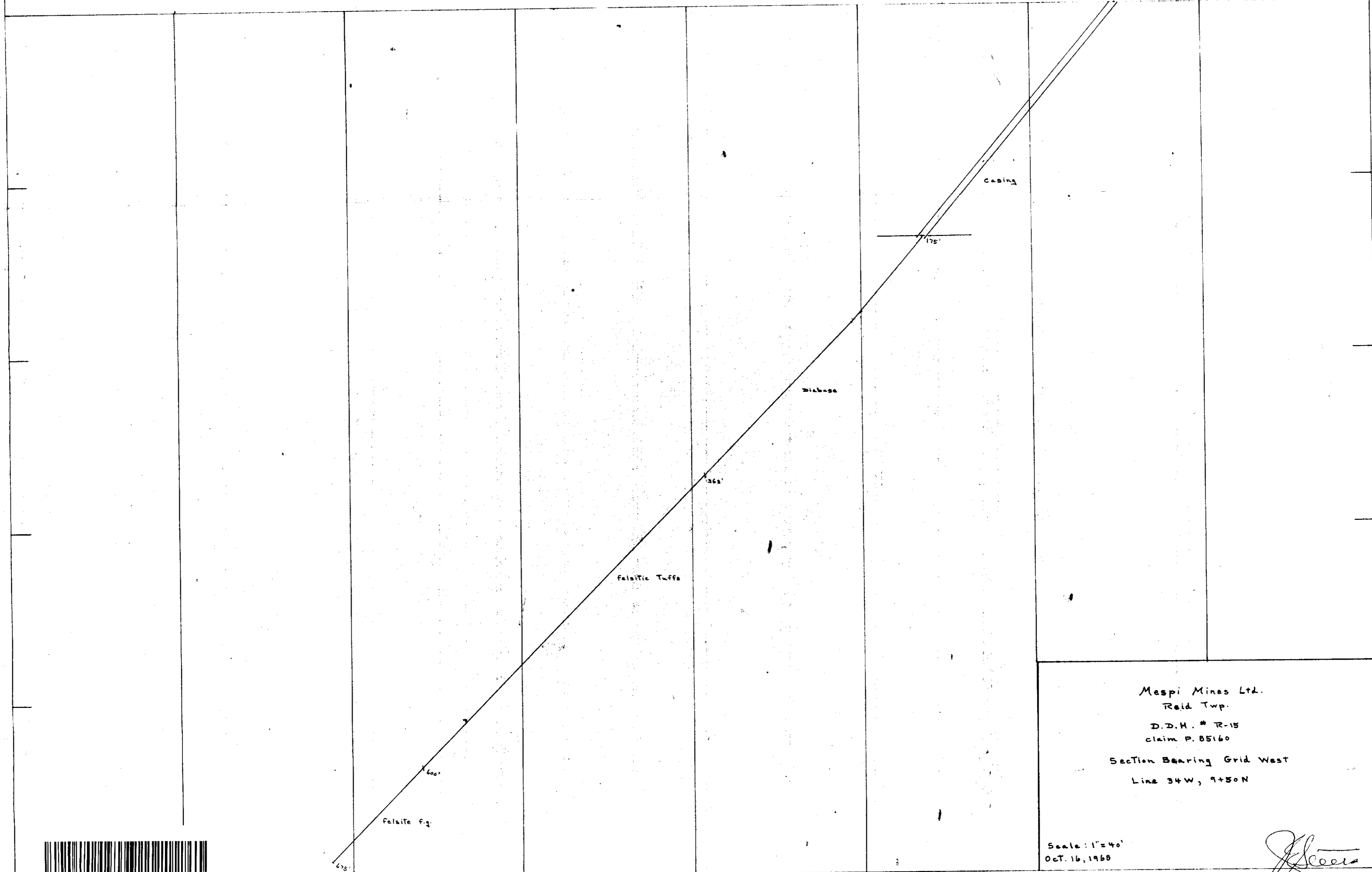
 DDH # R-10
 CLAIM P. 55198
 SECTION BEARING GRID NORTH
 LOOKING EAST
 LINE 14+00 W, 14-S
 SCALE 1" = 100'
 DATE SEPT. 1966
Esters



Location Map
Reid Twp.
1" = 400'



N 85° 15' E
N 85° 15' E
N 85° 15' E



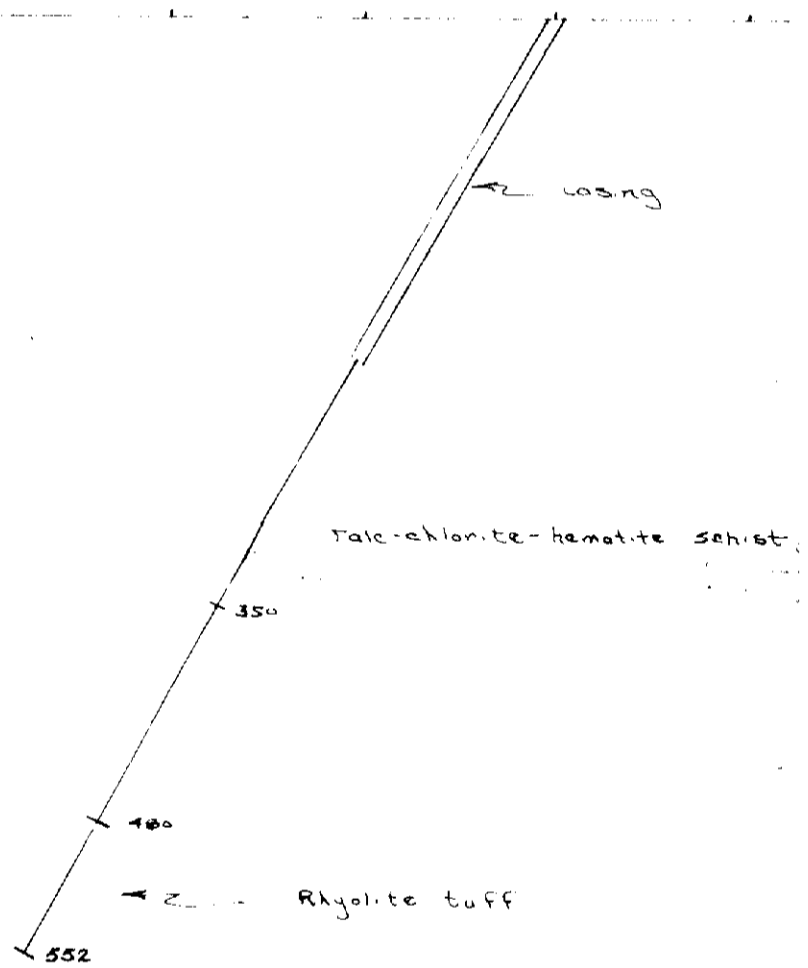
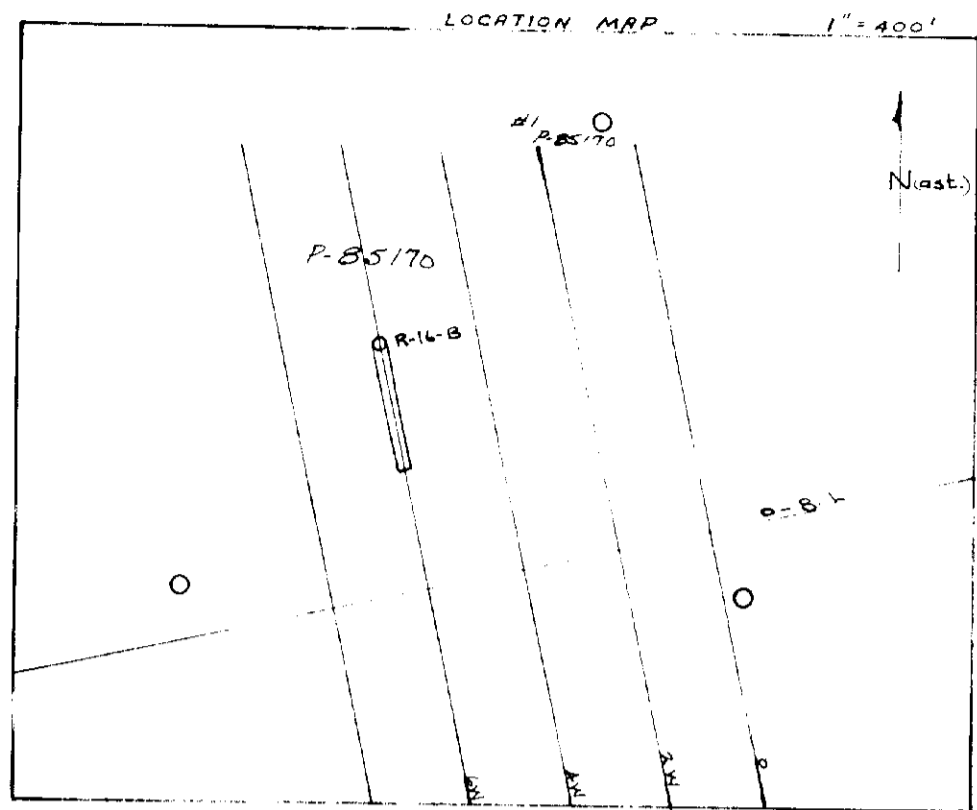
Mespi Mines Ltd.
Reid Twp.
D.D.H. # R-15
claim P. 85160
Section Bearing Grid West
Line 34W, 9+50N

Scale: 1" = 40'
Oct. 16, 1988

J. Steen



42A135E0131 25 REID



P-55125

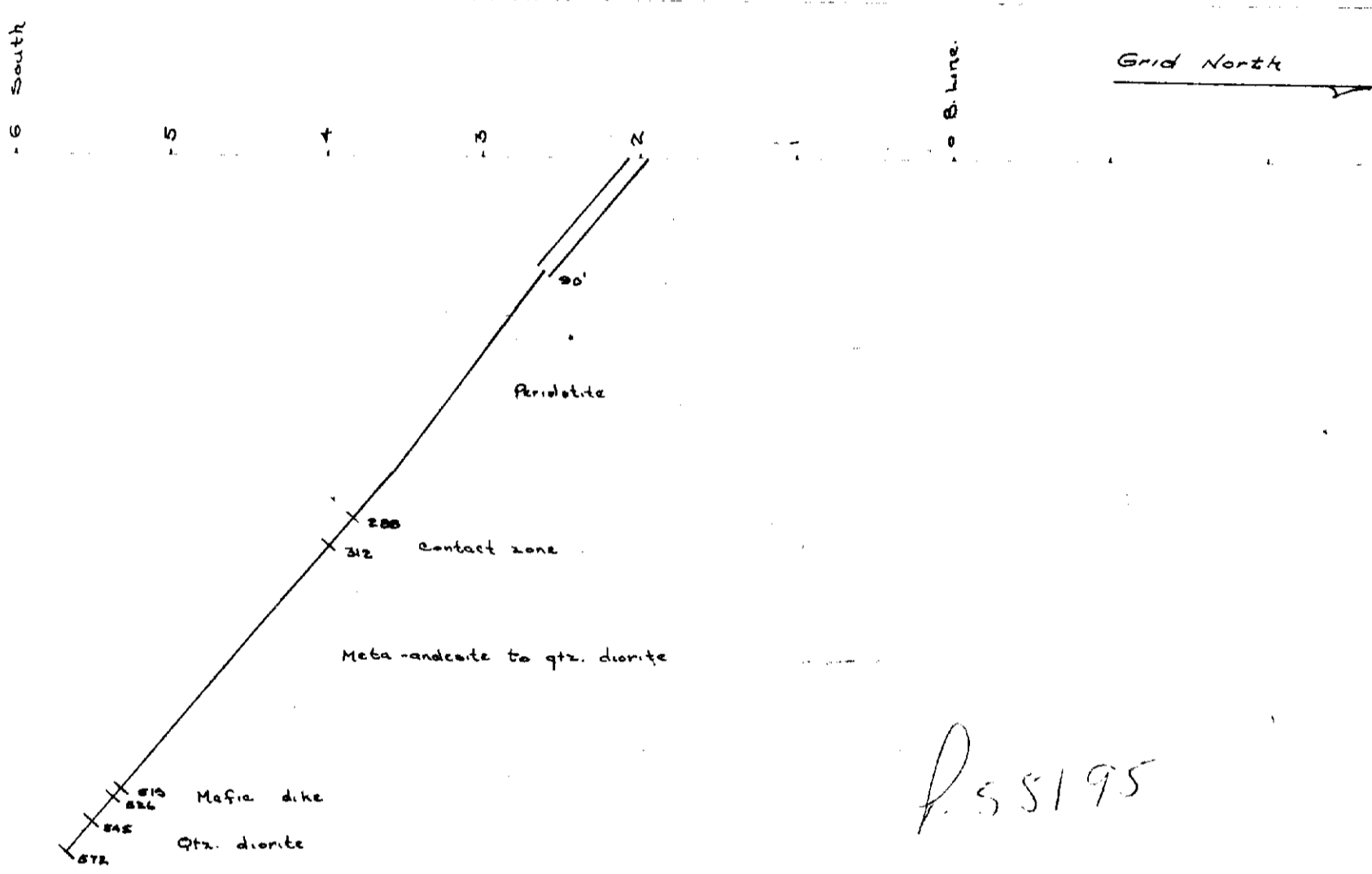
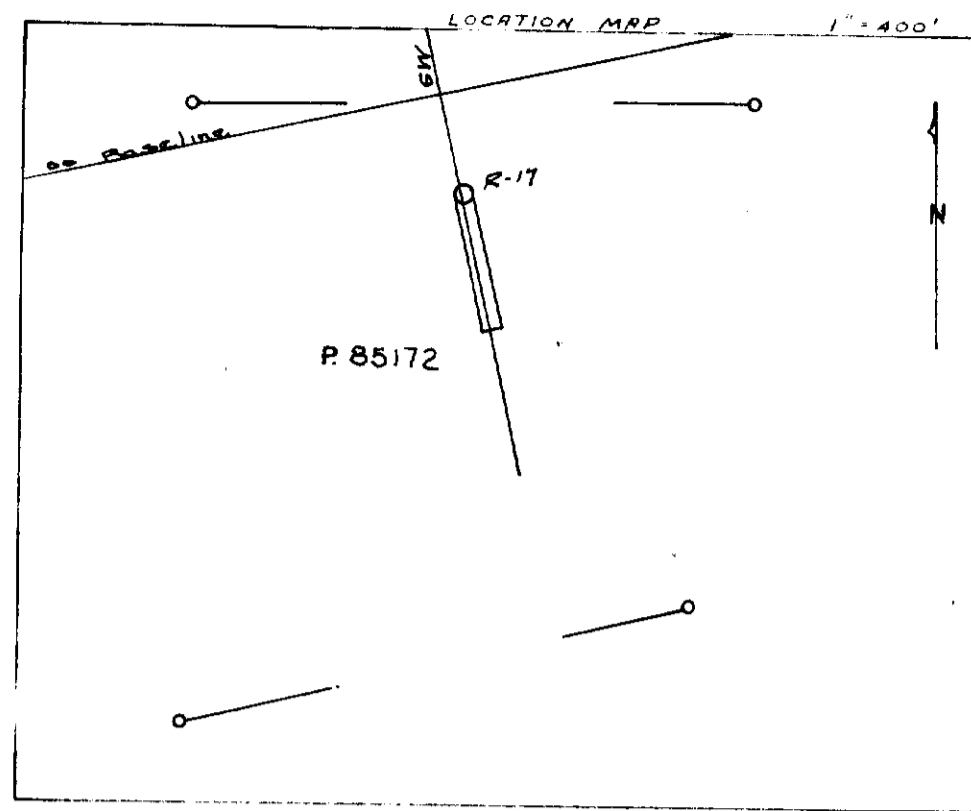
MESPI MINES LTD.
TOWNSHIP.

D.L.H. # R-16, A-16-B
CLAIM P. 85170
SECTION BEARING - Grid North

SCALE 1" = 100' DATE: Nov 10 2006



42A13SE0131 25 REID



MESPI MINES LTD.
 REID TOWNSHIP.
 D.L.H. # R-17
 CLAIM P. 85172
 SECTION BEARING Grid North.
 SCALE 1" = 100'
 DATE Jan 10 1967
Reid



42A135E0131 25 REID