



42A14NE0024 27 REAUME

010

Diamond Drilling

Township of REAUME

Report NO 27

Work performed by: Geophysical Engineering Limited

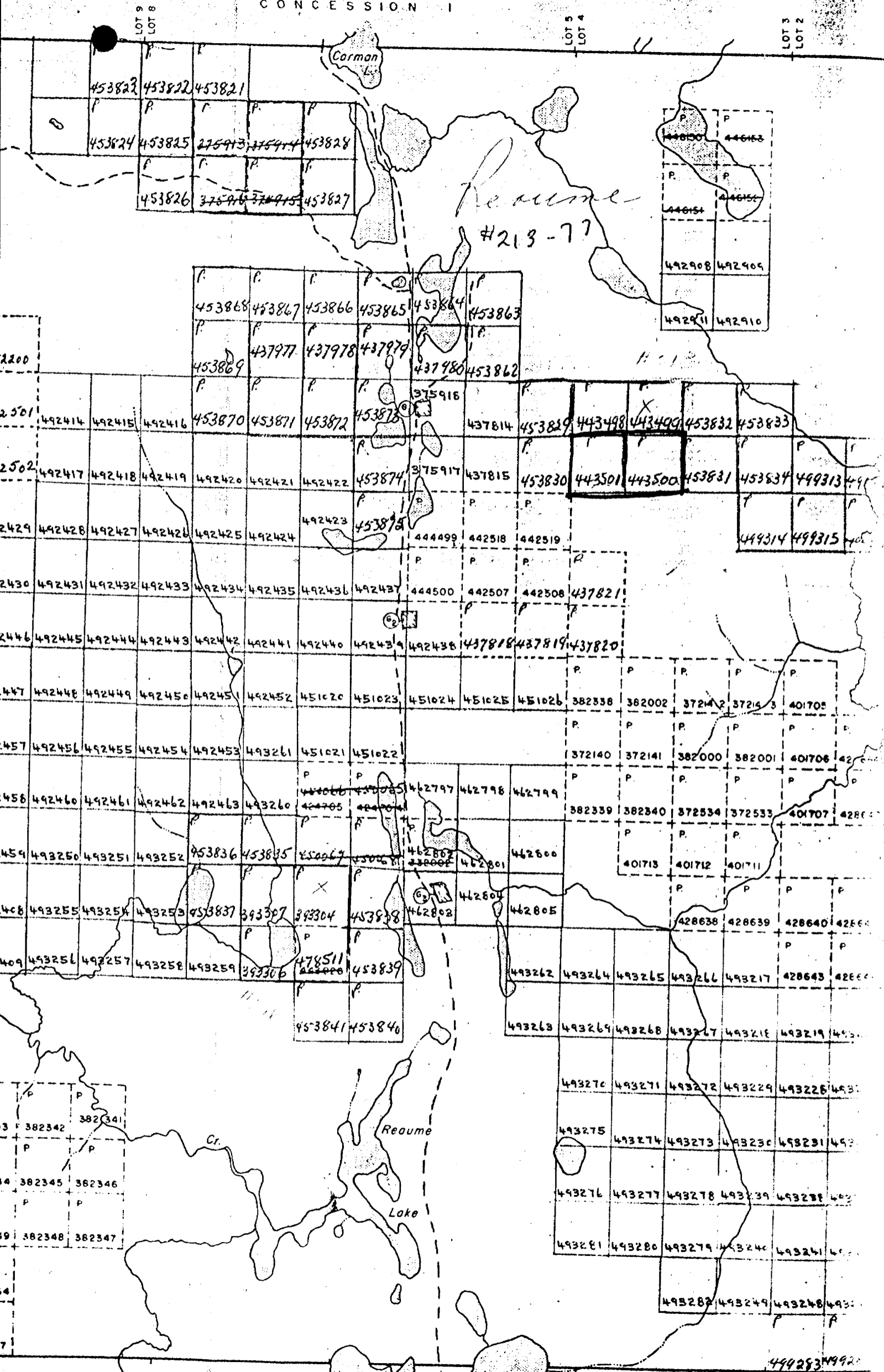
Claim NO	Hole NO	Footage	Date	Note
P 443500 & 443501	PP4-3	336.0'	Mar/77	(1)

Notes:

(1) #213-77

FOURNIER T.P. M. 411

CONCESSION I



GEOPHYSICAL ENGINEERING LIMITED

DIAMOND DRILL LOG

Hole PP4-3
Sheet 1 of 1

Job <u>984 PP4 N.T.S. 42 A/14</u>	Objective <u>To test</u>	Core location <u>North Bay</u>	Tests	Location Sketch
Property <u>Group PP4-12</u>	Drilling Co. <u>Bradley Brothers Limited</u>	<u>Ontario</u>		
Township <u>Reame</u>	Commenced <u>March 10, 1977</u>	Distance to water <u>4000'</u>	A: Collar <u>250</u>	443498 443499
Location: Lat. <u>12°35'S</u>	Completed <u>March 15, 1977</u>	Casing lost	Dip <u>50°</u>	
Dep. <u>2°00'E</u>	Length <u>336.0</u>	Core Size <u>AQ</u>	Azimuth <u>0</u>	443501 443500
Elev. _____				
Longed <u>T. Neelands</u>				
Remarks <u>Conductor intersected at 241.1-261.0</u>				

Footage		Rock Type	Description	Sample No.	From	To	Length Feet	Assays									
From	To							Cu ppm	Pb ppm	Zn ppm	Ni ppm	Mn ppm	Ag ppm	Au ppb			
0	120.0	CASING															
120.0	188.1	BASALT	Light-green, medium hardness. Intermediate to mafic silica content; aphanitic. Flow banding at 172.0, 50° to core axis. Carbonate filled fractures, 2 per metre. Low grade chlorite alteration. 5% carbonate content. 1% pyrrhotite and pyrite in fractures and blebs.	1425	120.0	145.0	25.0										
188.1	193.3	SEDIMENTS	Interbedded grey, green and black beds of siltstone and shale (50% graphitic shale). Core angles 45° - 50° to core axis. Beds vary in thickness 1mm - 4cm. Carbonate content 15%. 188.1-188.7 60% pyrrhotite and pyrite (3:2) 188.7-193.3 3% pyrrhotite and pyrite combined.	1424	188.1	188.7	0.6	1000	24	32	258	840	2.0	460			
193.3	241.1	BASALT	As from 120.0-188.1, except more fine grained. Increase in fracturing to 4 per metre. Quartz vein 224.0 to 225.2. Carbonated (20%) between 192.0 and 197.0.														
241.1	261.0	SEDIMENTS	Interbedded grey and black beds; 30% black graphitic shale (some beds 10cm thick). Core angles between 30° and 50° to core axis. At 256.0 - fault 15cm wide. Minor sulphides 241.3-243.1, 10% pyrrhotite and pyrite; 251.7-252.4, 5% pyrrhotite. 256.4-259.7, 3% pyrrhotite, 2% pyrite.	1426 1427 1428	241.3 251.7 256.4	243.1 252.4 259.7	1.8 0.7 3.3	1020 580 440	21 21 25	800 24 11	222 165 195	240 355 440	1.2 1.5 1.1	115 25 20			
261.0	336.0	BASALT	As from 120.0-188.1, except 1 fracture per metre Contains thin graphitic sediments; 300.0-301.2, 311.7-312.3 and 317.5-318.4.	1429	270.0	295.0	25.0										
336.0		END OF HOLE.															
				1425	120.0	145.0	25.0	46.3	14.41	15.42	9.37	9.63					
				1429	270.0	295.0	25.0	47.1	11.22	11.18	16.55	9.67					
				1425				0.72	2.89	1.07	0.09	0.19	0.44				
				1429				0.87	1.23	0.50	0.10	0.15	0.30				
				1425				CO ₂ %									
				1429				0.84									
								7.58									



RE A U M E T W P.



2500' to lake
0+00

(BL) Az. 090°

P. 443498

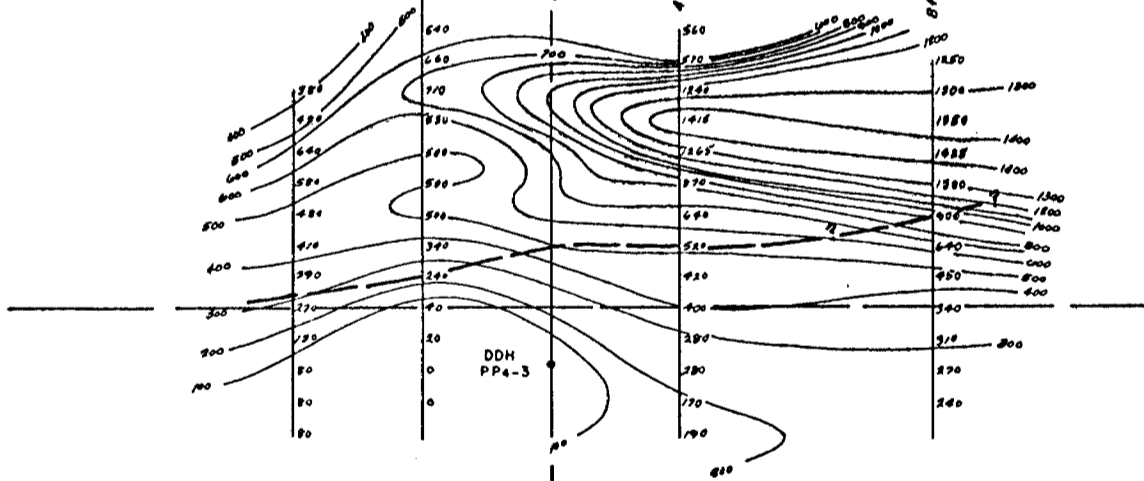
P. 443499

2+00W

2+00E

4+00E

8+00E



P. 443501

P. 443500

METRES 0 50 100
 FEET 0 200'

Instrument: Fluxgate MF-1 Mag.
 Operator : Grant

DIGHEM SYNDICATE
 AREA PP4 - ANOMALY 435A
 MAG. SURVEY
 DATE APR. 1976. JOB 984