



42A14NE0032 17 REAUME

010

Diamond Drilling

Township OF REAUME

Report N^o: 17

Work performed by: E. F. CARR (CERRO MG.)

Claim N ^o	Hole N ^o	Footage	Date	Note
P.102025	J1	386'	May/70	(1)
	✓5	516'	May/70	(1)
	J6	357'	June/70	(1)
P.102071	J2	357'	May/70	(1)
P.102069	J3	364'	May/70	(1)
		<u>1980'</u>		

Notes:
(1)

133/70 -- autopositive enclosed

CERRO MINING COMPANY OF CANADA LIMITED

DIAMOND DRILL LOG

SHEET 1 OF 2
 D.D. HOLE NO. 1
 PROJECT NO. 10,049
 PROPERTY Peare
 DIVISION Eastern

GEOLOGIST P. E. GIBLIN
 COLLAR COORDINATES 2+05 N 7+15 W E
 COORDINATES _____
 BEARING 5.25°N INCLINATION -50°

COLLAR ELEVATION _____
 WATER LEVEL ELEV _____
 CASING IN PLACE REMOVED
 DATE STARTED May 10/70
 DATE COMPLETED May 14/70
 TOTAL DEPTH 386'

CORE SIZE	INTERVAL		LENGTH OF RUN	CORE LENGTH	% REC.	SAMP		SAMPLE		Sample Length	ASSAYS			Inclination		TRO-PARI		Geology	DESCRIPTION
	FROM	TO				C	S	FROM	TO		Record Dip	Correct Dip	Bearing	DIP					
AQ	0	112																	Overburden: sand, gravel, boulders
	112	220.1										118'	58°	50°					Peridotite: medium to coarse-grained, dark blue grey in color. Cut by numerous serpentine-coated slips, most commonly at 30° and 40° to core axis. Brecciated and silicified 147.3-147.4, banding in silicified zone at 20° to core axis. At about 190' gradual change to grey-green colour occurs, accompanied by abundant disseminated carbonate. Minor fine-grained pyrite and occasional rare speck of chalcopyrite on slip surface. Occasional quartz-carbonate veins less than 1" thick.
	220.1	229.2																	Graphite zone: interbedded graphitic shale, chert, and greywacke. Graphitic shale predominates, comprises about 80% of zone. Lenses of pyrite, less than 1/4" thick, comprises about 5% of rock, parallel to bedding. Bedding at 80° to core. Graded bedding in greywack indicates tons are un-hole.
	229.2	241.7																	Acid to intermediate metavolcanics; fine-grained to aphanitic, light grey-green in colour, brecciated in part, cut by narrow veins of quartz-carbonate less than 1/4" thick.
	241.7	242.5																	Graphitic shale; carries about 5% pyrite in lenses parallel banding, banding at 60° to core.
	242.5	244.0																	Acid metavolcanics.
	244.0	246.2																	Graphitic shale; fragments of acid metavolcanics in shale.
	246.2	247.7																	Acid metavolcanics.
	247.7	248.6																	Shale and grit; banding at 60°-80° to core.
	248.6	300.0										300'	58°	50°					Acid metavolcanics; 1" thick quartz-carbonate vein, minor pyrite, 40° to core at 276.7. Smaller quartz-carbonate veinlets, with minor pyrite and rare specks of chalcopyrite cut rock most commonly at 30° and 45° to core, comprises 1% to 5% of rock, estimated Cu content is trace. Colour is darker gray 28N-291.
	300.0	301.0																	Graphitic zone: coarse-grained graphite and carbonate material.
	301.0	386																	Acid metavolcanics: brecciated 302.0-305.0, quartz-carbonate veins common, particularly at 302.0-305.0 and 324.0-326.8.

P. E. Giblin

CERRO MINING COMPANY of CANADA LIMITED

DIAMOND DRILL LOG

SHEET 1 OF 2
 D.D. HOLE NO. 2
 PROJECT NO. 10,040
 PROPERTY Peabody
 DIVISION EASTERN

GEOLOGIST P.L. Giblin
 COLLAR COORDINATES 22 + 35 N. 28 + 00 W E.
 GRID COORDINATES _____
 BEARING South INCLINATION 37°

COLLAR ELEVATION _____
 WATER LEVEL ELEV _____
 CASING IN PLACE
 REMOVED

DATE STARTED May 16, 1970
 DATE COMPLETED May 18, 1970
 TOTAL DEPTH 357'

CORE SIZE	INTERVAL		LENGTH OF RUN	CORE LENGTH	% REC.	SAMP		SAMPLE		Sample Length	ASSAYS				Inclination		TRO-PARI		Geology	DESCRIPTION
	FROM	TO				C	S	FROM	TO		NI				Record Dip	Correct Dip	Bearing	DIP		
A3	0	145																		Overburden: sand, gravel, boulders.
	145	151.9																		Gabbro: light green-gray colour, massive, medium-grained Brecciated with carbonate veining 147.0-147.4. Becomes finer-grained, darker after 147.4. Fractures parallel core axis 151.4-151.9.
	151.9	228.3													155° 57° 49°					Peridotite: medium-grained, blue-gray colour, traces disseminated pyrite and pyrrhotite, minor magnetite. Talcosa slips at 70° to core 174.5-158.0. Trace of chalcocite on fractures at 10° to core at 160.5. Carbonate veins common 170-175. Vuggy quartz veins 221.5-221.7 and 222.8-222.9. Green-gray, fine-grained schistose at 65° to core from 223.6-227.8.
								262.9	262.5	0.5	0.01									Thin bands of pyrite with traces of chalcocite, aggregating 0.1 inches thick at 242.5, 70° to core, Brecciated, quartz-carbonate veins common 242.5-244.2 and 245.5-246.1. Quartz vein 246.4-243.0.
	298.3	299.6																		Graphite zone: graphitic shale with about 5% pyrite, minor quartz veining, a few narrow graywacke inter beds. Bedding at 45° to core.
	299.6	338.7																		Peridotite: medium-grained, gray-green. Graphitic shear with minor disseminated pyrite 302.9-302.8, angle varies from 50° to parallel to core. Graphitic shears: 312.8-312.9, 60° to core. 315.0-315.2, 60° to core. 318.9-319.2, 50° to core. Latter section carries about 5% pyrite in narrow leascs parallel banding. Minor pyrite in 1/4" thick quartz vein at 333.3.
																				Rock schistose 337.5-338.7.

PROPERTY NAME:	
DRILL HOLE NUMBER:	
FROM:	
TO:	

PLG

CERRO MINING COMPANY of CANADA LIMITED

DIAMOND DRILL LOG

SHEET 2 OF 2
 D.D. HOLE NO. 2
 PROJECT NO. 10,049
 PROPERTY BOADAS
 DIVISION EASTERN

GEOLOGIST P.R. Giblin
 COLLAR COORDINATES 22 + 35 N. 28 + 00 W.
 GRID COORDINATES _____
 BEARING South INCLINATION 50°

COLLAR ELEVATION _____ DATE STARTED May 16, 1970
 WATER LEVEL ELEV _____ DATE COMPLETED May 19, 1970
 CASING _____ TOTAL DEPTH 557'

IN PLACE
 REMOVED

CORE SIZE	INTERVAL		LENGTH OF RUN	CORE LENGTH	% REC.	SAMP. C S	SAMPLE		Sample Length	ASSAYS				Inclination		TRO-PARI		Geology	DESCRIPTION
	FROM	TO					FROM	TO		Ni	Zn	Ac	As	Record Dip	Correct Dip	Bearing	DIP		
1/2	338.7	347.2					345.0	346.0	1.0	0.19	0.02	Nil							Basic metavolcanic: fine-grained, dark gray to black, schistose, carries about 5% disseminated pyrite and pyrrhotite, a few narrow lenses of pyrite.
	347.2	353.0					351.0	351.0	1.0	0.15	0.01	Tr.	Tr.						Graphitic zone: interbedded graphitic shale and chert, carries about 5% pyrite in lenses sub-parallel bedding, banding at 50° to core. Few specks chalcocyanite at 348.5, estimated Cu grade is trace. Very minor chalcocyanite remainder of section, see sample 350.0-351.0.
	353.0	357																	Basic to intermediate metavolcanics: carry about 5% disseminated pyrite and pyrrhotite.
																			Graphitic zones: 354.4-354.5, at 50° to core. 356.2-356.4, about 10% pyrite in irregular masses.
	End of Hole.																		

PROPERTY NAME: **REVENUE**
 DRILL HOLE NUMBER: **S**
 FROM: **0**
 TO: **357**

P.R. Giblin

CERRO MINING COMPANY of CANADA LIMITED

DIAMOND DRILL LOG

SHEET 1 OF 3
 D.D. HOLE NO. 3
 PROJECT NO. 10,049
 PROPERTY Barrow
 DIVISION EASTERN

GEOLOGIST P.E. Giblin
 COLLAR COORDINATES 51 + 65 N. 22 + 00 E.
 COORDINATES _____
 BEARING South INCLINATION 33°

COLLAR ELEVATION _____ DATE STARTED May 29, 1970
 WATER LEVEL ELEV _____ DATE COMPLETED May 26, 1970
 CASING _____ TOTAL DEPTH 364'
 IN PLACE
 REMOVED

CORE SIZE	INTERVAL		LENGTH OF RUN	CORE LENGTH	% REC.	SAMP.		SAMPLE		Sample Length	ASSAYS				Inclination		TRO-PART		Geology	DESCRIPTION
	FROM	TO				C	S	FROM	TO		Si	Zn	Fe	Al	Record Dip	Correct Dip	Bearing	DIP		
	0	227																		Overburden: sand, gravel, boulders.
	227	231.1																		Basic metavolcanic: fine-grained, light to dark green in colour, schistose. Frequently brecciated and vuggy. Core badly fractured. Graphitic slugs common at 10° to 30° to core axis. Narrow pyrite bands parallel schistosity, comprise about 1% of rock. Schistosity at 10° to core.
	231.1	236.0																		Lost core.
	236.0	237.5																		Intermediate metavolcanic: light gray, fine-grained, schistose, carries 1 to 2% pyrite as disseminated grains and thin lenses. Graphitic from 236.2-236.4, with about 5% pyrite and traces of chalcovrite, banding at 40° to core.
	237.5	246.6																		Lost core.
	246.6	247.3																		Granite schist, with 5 to 10% pyrite, schistosity mainly at 35° to core.
	247.2	256.5						248.6	249.0	0.1	0.02	0.03								Intermediate metavolcanic: schistosity at 25° to core. Frequently vuggy. Carries about 5% pyrite and pyrrhotite.
	256.5	258.5																		Graphitic zone: graphitic shale, minor chert, minor quartz veining, less than 5% pyrite, schistosity at 45° to core.
	258.5	258.7																		Intermediate metavolcanic.
	258.7	260.0																		Lost core.
	260.0	264.0																		Intermediate metavolcanic: schistosity at 45° to core. Core badly broken.
	264.0	265.0																		Lost core.
	265.0	265.2																		Intermediate metavolcanic.

PROPERTY NAME: _____
 DRILL HOLE NUMBER: _____
 FROM: _____

PEG

CERRO MINING COMPANY OF CANADA LIMITED

DIAMOND DRILL LOG

SHEET 3 OF 3
 D.D. HOLE NO. 3
 PROJECT NO. 15,010
 PROPERTY Kenias
 DIVISION EASTERN

GEOLOGIST P.F. Giblin
 COLLAR COORDINATES 34 + 65 N 20 + 10 W E
 GRID COORDINATES _____
 BEARING South INCLINATION -50°

COLLAR ELEVATION _____ DATE STARTED May 20, 1970
 WATER LEVEL ELEV _____ DATE COMPLETED May 26, 1970
 CASING _____ TOTAL DEPTH 364'

IN PLACE
 REMOVED

CORE SIZE	INTERVAL		LENGTH OF RUN	CORE LENGTH	% REC.	SAMP		SAMPLE		Sample Length	ASSAYS				Inclination		TRO-PARI		Geology	DESCRIPTION
	FROM	TO				C	S	FROM	TO		Si	Zn	Ag	Au	Record Dip	Correct Dip	Bearing	DIP		
309.1	317.5																			Granite.
317.5	317.7																			Quartz vein.
317.7	318.0																			Granitic shale and chert: 5 to 10% pyrite.
318.0	320.0																			Lost core.
320.0	327.2																			Granitic shale, minor chert interbeds; carries about 5% pyrite in lenses parallel schistosity, latter is at 65° to core. Trace of chalcopyrite at 320.9.
327.2	329.9																			Intermediate metavolcanic.
329.9	331.5																			Lost core.
331.5	337.0																			Intermediate metavolcanic.
337.0	338.9																			Lost core.
338.9	343.2																			Intermediate metavolcanic.
343.2	346.3																			Lost core.
346.3	347.0																			Intermediate metavolcanic.
347.0	351.3																			Granite schist: schistosity at 25° to core, brecciated, minor quartz veining, carries 1 to 2% pyrite.
351.3	351.8																			Intermediate metavolcanic.
351.8	355.8																			Lost core.
355.8	364.0																			Intermediate metavolcanic: 1/2' thick granitic sugar
End of Hole.																				brecciated, numerous quartz- veins, carries 50-80% pyrite.

TO: 364'
 FROM: 0'
 DRILL HOLE NUMBER: 3
 PROPERTY NAME: 15,010
 REAR VIEW

P.F. Giblin

CERRO MINING COMPANY of CANADA LIMITED

DIAMOND DRILL LOG

SHEET 1 OF 1
 D.D. HOLE NO. 6
 PROJECT NO. 10,049
 PROPERTY McArae
 DIVISION EASTERN

GEOLOGIST P.H. Gilpin
 COLLAR COORDINATES 5 + 4.0 N. 6 + 10 W. E.
 GRID COORDINATES _____
 BEARING South INCLINATION -45°

COLLAR ELEVATION _____
 WATER LEVEL ELEV _____
 CASING _____ IN PLACE REMOVED
 DATE STARTED June 2, 1970
 DATE COMPLETED June 9, 1970
 TOTAL DEPTH 357'

CORE SIZE	INTERVAL		LENGTH OF RUN	CORE LENGTH	% REC.	SAMP.		SAMPLE		Sample Length	ASSAYS			Inclination		TRO-PARI		Geology	DESCRIPTION
	FROM	TO				C	S	FROM	TO		Record Dip	Correct Dip	Bearing	DIP					
37	0	82.5																	Overburden: sand, gravel, boulders.
	82.5	151.0											93°	52°	45°				Gabbro: light, green-gray colour, medium-grained, massive. Fractures 10° to core 87-93, fracture zone 30° to core 106.3-106.4 with quartz-feldspar veining. 1/2 inch thick quartz-feldspar veining 35° to core at 115.7, and at 127.0. Fracture 15° to core at 149.0 Fault gouge: 1/2 inch thick at 151.0.
	151.0	357.0																	Peridotite: deep, blue-gray colour, coarse-grained. Very fine-grained granite dike 189.5-189.6. Shears: 6° to 10° to core, 195.0-195.7. 15° to core 199.8-209.8. 45° to core 240.5-249.9. 55° to core 257.0. 45° to core 261.2-261.7. 45° to core 264.9. 37° to core 265.4-266.5. From 287 to end - carbonate-serpentine and quartz-carbonate veins are common, comprise about 1% of core, most commonly at 10°, 45°, and 70° to core. Few specks of nyrite on slip surfaces at 300.1 and 349.9.
																			End of hole.

PROPERTY NAME: TREANNE
 DRILL HOLE NUMBER: 6
 FROM: 0
 TO: 357'

P.H. Gilpin

CERRO MINING COMPANY OF CANADA LIMITED

DIAMOND DRILL LOG

SHEET 1 OF 2

GEOLOGIST P. E. GIBLIN

COLLAR COORDINATES 6+00 N 3+82W E

GRID COORDINATES _____

BEARING South INCLINATION -45°

COLLAR ELEVATION _____

WATER LEVEL ELEV _____

CASING _____ IN PLACE REMOVED

DATE STARTED May 20/70

DATE COMPLETED June 2/70

TOTAL DEPTH 516'

D.D. HOLE NO. 5

PROJECT NO. 10,049

PROPERTY Leasure

DIVISION Eastern

CORE SIZE	INTERVAL		LENGTH OF RUN	CORE LENGTH	% REC.	SAMP		SAMPLE		Sample Length	ASSAYS			Inclination		TRO-PARI		Geology	DESCRIPTION
	FROM	TO				C	S	FROM	TO		NI	Record Dip	Correct Dip	Bearing	DIP				
AQ	0	64																	Overburden: sand, gravel, boulders
	64	180.0											75'	54°	46°				Gabbro: light, green-grey in color, medium grained, massive. Fracture at 10° to core, 83. Quartz veins over 1/4" width in fracture zone at 113' to 200 to core, carry few specks chalcopyrite, estimated 1/2 grade trace Cu. Quartz-feldspar veins, each about 2" thick at 121, 124, 161. Fracture at 152.5, 10° to core, few small specks chalcopyrite, estimated grade trace Cu. From 170.5 to 174.0, rock sheared, most commonly at 10° to 20° to core, with narrow talc-serpentine veinlets which carry a few disseminated specks of chalcopyrite at 171.5 and a few tiny lenses of chalcopyrite from 172.5-172.9. Estimated grade is trace Cu. Few specks chalcopyrite on fractures at 174.9 and 175.2, estimated grade trace Cu. About 173.5 a gradational change starts, color darkens, rock becomes coarser-grained.
	180.01	373.4																	Peridotite: dark blue-grey, coarse-grained, disseminated magnetite common, carries 1-2% disseminated pyrite and pyrrhotite. Badly fractured along numerous serpentine-coated slips from 205.0-224.5, commonly parallel core axis. Few specks of pyrite on slips at 213 & 216.5. Talc-carbonate veining, 240.4-240.7. Fractures 25° to core 241.7 and 242.5. Speck of chalcopyrite in narrow carbonate veinlet at 288.7. Fractures 0° to 10° to core, 289.7-290.7; 15° to 20° to core, 293.0-294.1. Fractures 0° to core 303.5. Fractures 0° to core 308.0-308.8, 30° to core 340.6-341.0, 30° to core 341.0-341.5. Carbonate veining. Few specks pyrite and chalcopyrite at 346.5 and 350.0, estimated grade trace Cu. Shear zone at 50° to core 354.5-355.1 and 373.0-373.2.

PEG

GERRO MINING COMPANY of CANADA LIMITED

DIAMOND DRILL LOG

 SHEET 2 OF 2

 D.D. HOLE NO. 5

 PROJECT NO. 10,049

 PROPERTY Reame

 DIVISION Eastern

 GEOLOGIST P. E. GIDLIN

 COLLAR COORDINATES 6+00 N. 3+85W &

GRID COORDINATES _____

 BEARING South INCLINATION -45°

COLLAR ELEVATION _____

WATER LEVEL ELEV _____

 CASING _____ IN PLACE REMOVED

 DATE STARTED May 29/70

 DATE COMPLETED June 2/70

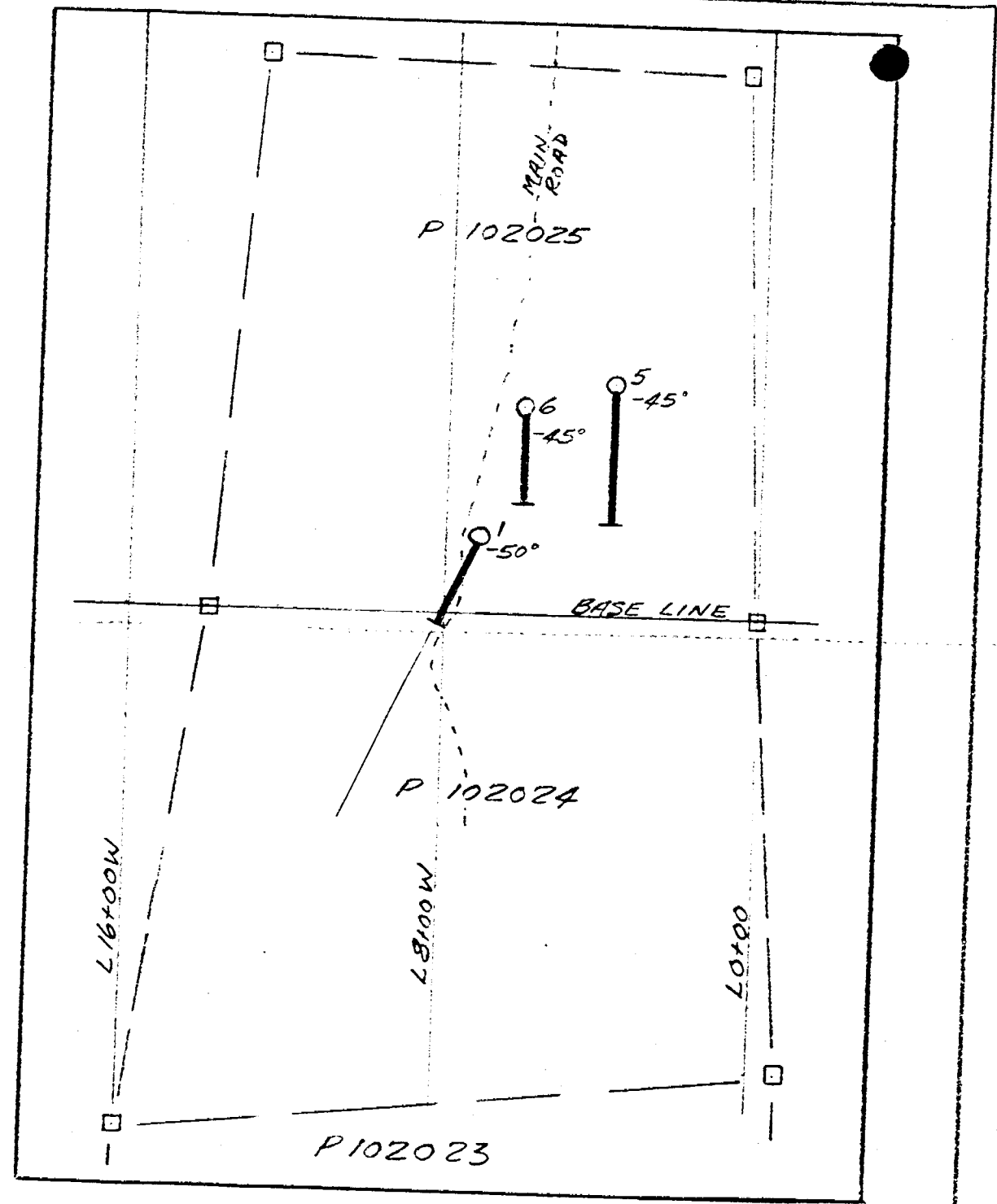
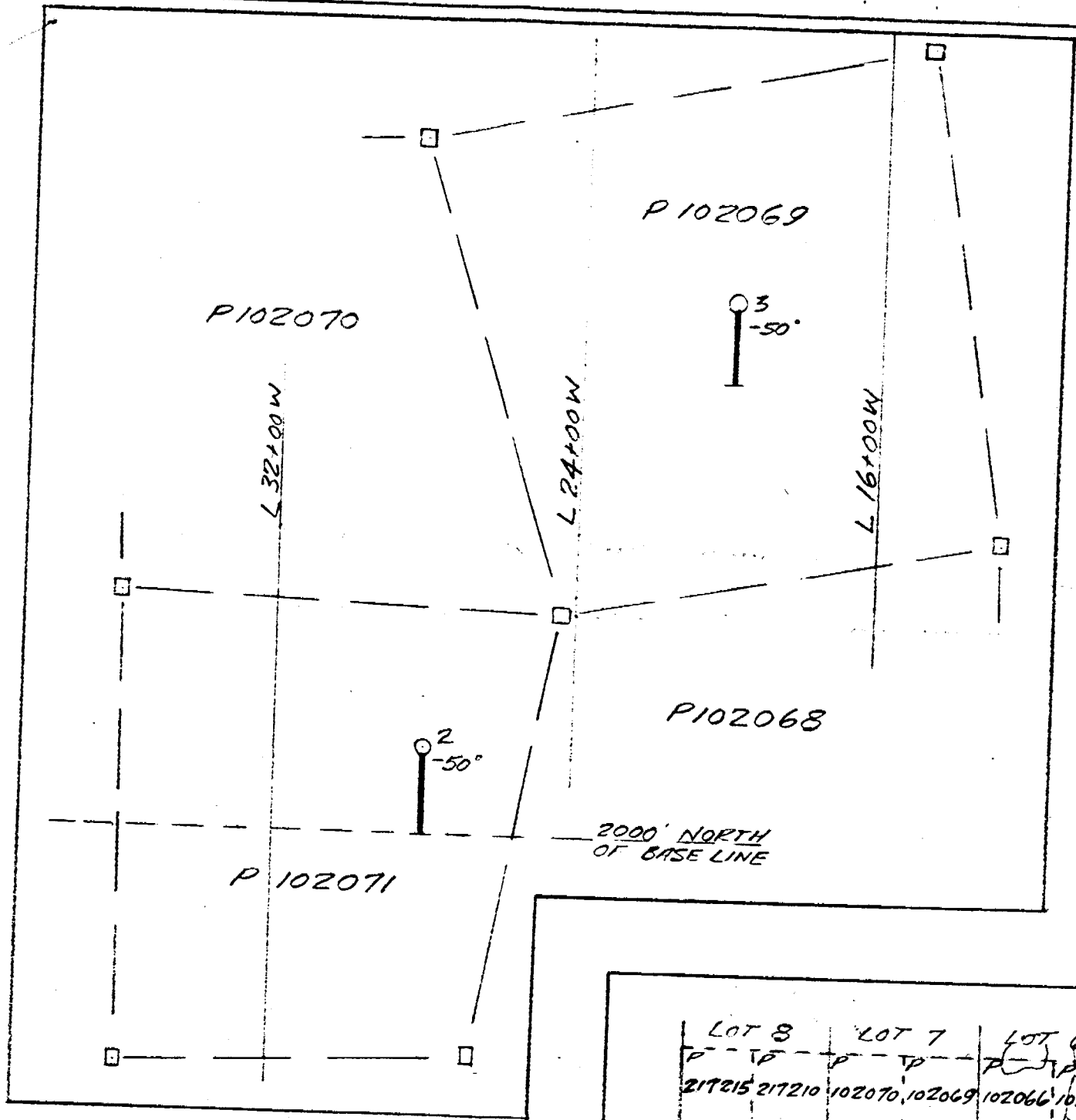
 TOTAL DEPTH 516'

CORE SIZE	INTERVAL		LENGTH OF RUN	CORE LENGTH	% REC.	SAMP. C S	SAMPLE		Sample Length	ASSAYS				Inclination		TRO-PARI		Geology	DESCRIPTION
	FROM	TO					FROM	TO						Record Dip	Correct Dip	Bearing	DIP		
	373.4	377.9																	Granite: gray, fine to medium-grained, carries considerable carbonate, chilled contacts, upper at 35° to core, lower at 50° to core.
	377.9	412.8																	Peridotite: deep blue-grey color, coarse-grained, magnetite common. Numerous fractures at variety of angles 375.3-377.2 1/2" thick carbonate vein 40° to core at 379.0 Finer grained, green-gray from 390.7 to 391.0 Magnetite veinlets, 5, each 0.1" thick at 402.5 Fractures: 30° to core at 402.7 45° to core at 404.3
	412.8	413.0																	Granite: gray, fine-grained, upper contact 60° to core, lower contact 45° to core.
	413.0	516																	Peridotite: deep blue-grey, coarse-grained, 1/4 pyrite and pyrrhotite. Fracture 20° to core at 441.0 Narrow carbonate veins common at wide variety of angles. Veinlets of asbestos occur from 450 to end, comprise less than 1% of rock, are generally less than 1/20" thick, one at 492.7 is 1/10" thick, 40° to core 1/2" thick carbonate vein, 70° to core at 500.8.
							473.7	474.0	0.3	0.16									

PROPERTY NAME: REAME
 DRILL HOLE NUMBER: 5
 FROM: 0.
 TO: 216.

P. E. Gidlín

#133/70 Reame Twp
E. F. Carr



CON. IV	LOT 8		LOT 7		LOT 6		LOT 5	
	P	P	P	P	P	P	P	P
	217215	217210	102070	102069	102066	102076	102079	
	217214	217211	102071	102068	102067	102077	102078	
	217213	217212	102072	102071	102021	102025	102026	102031
			102073	102022	102024	102027	102030	102033
			102074	102075	102023	102028	102029	102034

CLAIM PLAN - REAUME TWP. ONT.
SCALE 2" = 1 MILE

E. F. CARR CLAIM GROUP
REAUME TWP. ONT.

DRILL HOLE PLAN

SCALE 1" = 400'

AUG. 1970

#17