



42A14NE0047 63.1372 REAUME

010

REPORT
OF
GEOPHYSICAL SURVEYS, REAUME TOWNSHIP
GROUP NO. 2
FOR
COULEE LEAD AND ZINC MINES LIMITED
TIMMINS AREA
PORCUPINE MINING DIVISION, ONTARIO

*902-55 Young St.
Toronto*

SUMMARY

Coulee Lead and Zinc Mines Limited hold 24 unpatented contiguous claims in the north central portion of Reaume Township. The northern 18 of these claims were surveyed with magnetometer and electromagnetic equipment. The rocks in this area are generally basic Keewatin volcanics intruded by basic and ultrabasic masses.

The magnetometer survey outlined a broad band of magnetically high readings, within this there are five distinct peaks. There appears to be a north - south striking fault or displacement that crosses the baseline at Line 28 W. Isolated from this main magnetic feature is a magnetic high at 24 + 00 N Line 4 W. Three moderately conductive zones are superimposed on the main magnetic anomaly. These zones are considered as drill targets. Two other conductors were outlined.

REPORT
OF
GEOPHYSICAL SURVEYS, REAUME TOWNSHIP
GROUP NO. 2
FOR
COULEE LEAD AND ZINC MINES LIMITED
TIMMINS AREA
PORCUPINE MINING DIVISION, ONTARIO

I INTRODUCTION

The presence of copper intersections were known in Reaume Township as the result of earlier exploration work carried out in search for asbestos, so following the Texas Gulf Sulphur base metal discovery in Kidd Township, to the west, promising ground was acquired.

In order to explore this basemetal situation magnetic and electromagnetic surveys were carried out over an 18 claim portion the Coulee Group No. 2. These claims were located in the north central portion of the Township.

II PROPERTY, LOCATION AND ACCESS

The northern portion containing the following 18 claims was surveyed.

P - 60815 - 60832 inclusive (18 claims)

The group is located 32 miles northeast of Timmins and about 20 miles northwest of Iroquois Falls. These claims form approximately all of Lots 3 and 4, Concession IV and a portion of Lot 4, Concession V, Reaume Township (subdivision annulled).

Access to the property is either from Highway No. 11 which passes approximately 6 miles east of these properties then along a secondary road that comes within a mile or two of the property, or by helicopter from Timmins.

III GENERAL GEOLOGY

There is a large number of rock outcrops in Reaume Township and this portion of the Township is underlain by volcanic rocks basic in composition. These older rocks are intruded by diorites and gabbros along with some associated ultrabasics, peridotites and diorites.

Preliminary geologic and reconnaissance magnetic surveys indicate these basic igneous masses are cut and displaced by several north - south striking faults. No outcrops were reported on the claim group.

IV GEOPHYSICAL SURVEYS

The magnetic and electromagnetic surveys were carried out over a grid that strikes east - west across the property.

North - south traverse lines were cut at 400 foot intervals. The survey results are shown on the two accompanying maps (scale 1" = 200 feet) and are discussed below:

MAGNETOMETER SURVEY

The magnetic survey results are contoured on the accompanying map. The maximum relief is about 7000 gamma. There are two magnetic features.

There is a broad band of magnetics straddling the baseline from the east to west with a relief of 4000 gamma. Within the band there are 5 magnetic highs each in excess of 6000 gamma. This is considered to be made up of basic intrusives. It shows left hand faulting at Line 24 W, baseline. This north - south fault is likely related to a similar fault on the Headway Red Lake Gold Mines Limited property to the north. Termination or dislocation of conductors against this feature tend to confirm its presence.

The second feature is an isolated magnetic closure at 24 + 00 N Line 4 W with a relief of 1400 gamma. This plug-like anomaly is likely a basic intrusive related to the main intrusives in the area.

ELECTROMAGNETIC SURVEY

A dip-angle survey was run along the traverse lines and the results plotted in profile form. The 1000 cycle per second pro-

files are shown in solid lines. Three moderately conductive zones were located lying within the magnetic (or intrusive) band. An additional conductive zone was located to the north.

ZONE 'A'

This zone was traced from Line 24 W to Line 40 W. There is some flexure or displacement at the interpreted fault on Line 28 W. The zone appears best on Lines 36 W and 40 W. Line 36 W is a recommended location to drill the zone.

ZONE 'B'

This conductive zone angles across the magnetic band, it was traced from Line 32 W to Line 56 W. It is best defined on Lines 36 W, 40 W and 44 W. Line 40 W is a recommended location to test the zone.

ZONE 'C'

This zone is shorter than the previous two. It appears to terminate against the interpreted fault. The recommended location for a test of this zone is Line 16 W. A weak zone parallels this zone about 700 feet to the south.

ZONE 'D'

This zone is located on Lines 8 W and 12 W. It is best defined on Line 12 W.

V CONCLUSIONS AND RECOMMENDATIONS

A broad band of magnetics were traced across the property and are interpreted as basic intrusives. Within this band three zones, 'A', 'B' and 'C' were located. An interpreted north - south fault interrupts all of these geophysical features.

In addition, one magnetic anomaly and one electromagnetic zone lie in the northeast portion of the surveyed area.

It is recommended that when a drilling programme is undertaken Zones 'A', 'B' and 'C' be drilled.

An additional hole in the isolated magnetic feature to the northeast is recommended at that time.

Respectfully submitted,

SCOPE MINING AND EXPLORATION
CONSULTANTS LIMITED



Tom Gledhill, P.Eng.
Geophysicist.

TORONTO, ONTARIO

OCTOBER 9th, 1964.

APPENDIX

GROUP NO. 2

COULEE LEAD AND ZINC MINES LIMITED

I SUMMARY

Later in October 1964 the six southern most claims were surveyed with a similar type electromagnetic survey. Three conductive zones 'E', 'F' and 'G' were located. Zone 'E' was the most promising of these three zones.

It is recommended that zone 'E' be considered of equal rank to zone 'A', 'B' and 'C' and drilled as part of the same drill program.

II ELECTROMAGNETIC SURVEY

ZONE 'E' is the eastern portion of a long zone that was traced onto the Headway ground to the west. It has best definition on Line 16 W. It is here it should be tested.

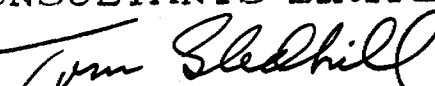
ZONE 'F' is a short zone located on Lines 8 W and 12 W. At present it appears to be of secondary importance.

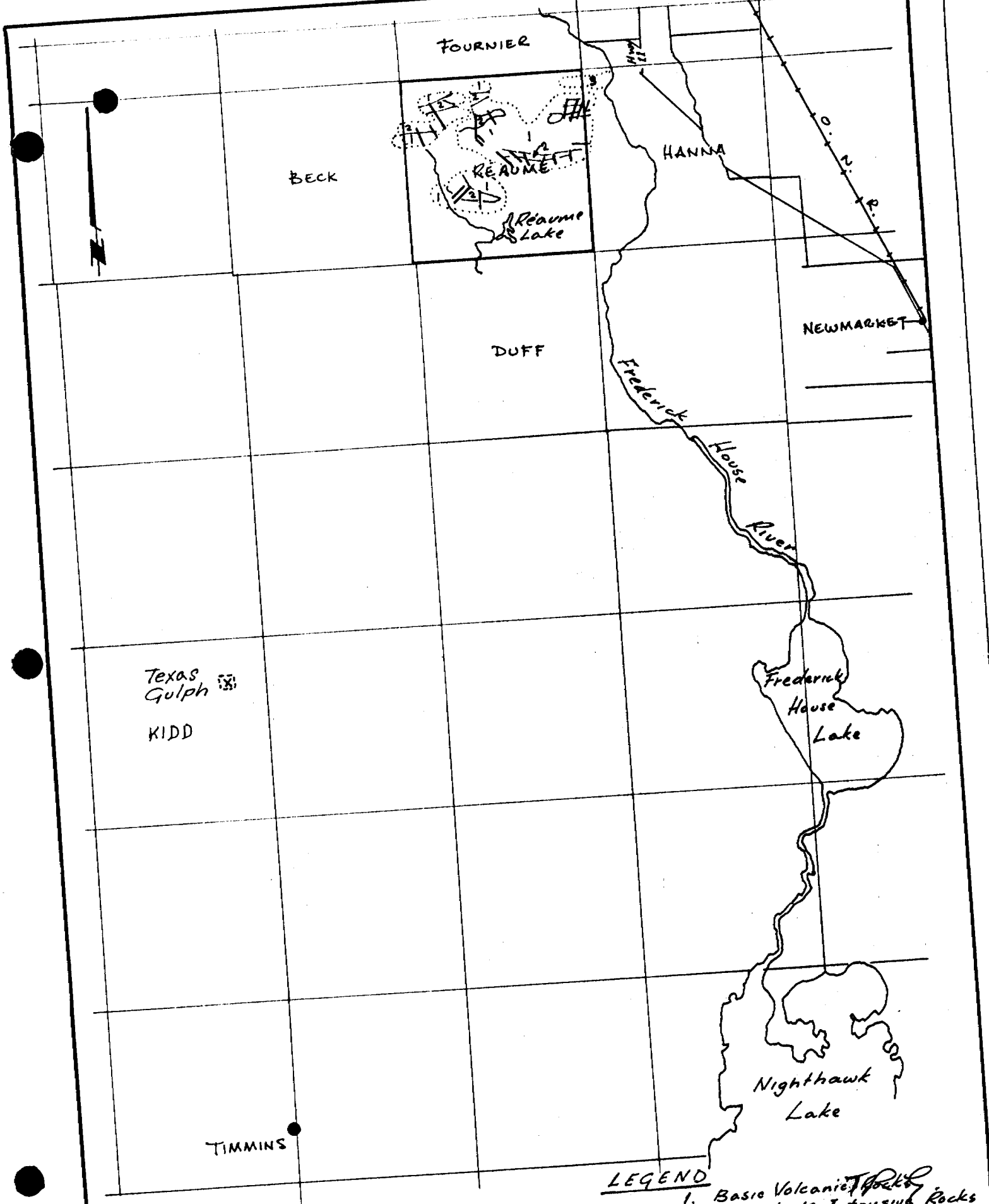
ZONE 'G' This zone could be the faulted offset of Zone 'E' and should be evaluated after Zone 'E' has been tested.

Respectfully submitted,

SCOPE MINING AND EXPLORATION
CONSULTANTS LIMITED

TORONTO, ONTARIO
NOVEMBER 9th, 1964.


Tom Gledhill, P. Eng.
Geophysicist



LOCATION MAP

Scale: 1 inch to 4 miles.

June 1964.

LEGEND

1. Basic Volcanic Rocks
2. Basic & u/B Intrusive Rocks
3. Acid & Int. Volcanic Rocks
- Faults.

FOURNIER TWP.

60259	60258	60257	60269	60270	60276
60262	60263	60264	60268	60271	60274
60261	60260	60266	60267	60272	60273

R. VI.

RÉAUME TWP.

R. V.

60815 60820

60816 60821 60825 60829

60817 60822 60826 60830

60818 60823 60827 60831

60819 60824 60828 60832

R. IV.

60833 60840

60844 60848

64613 64612

R. III.

7

6

5

4

3

2

1

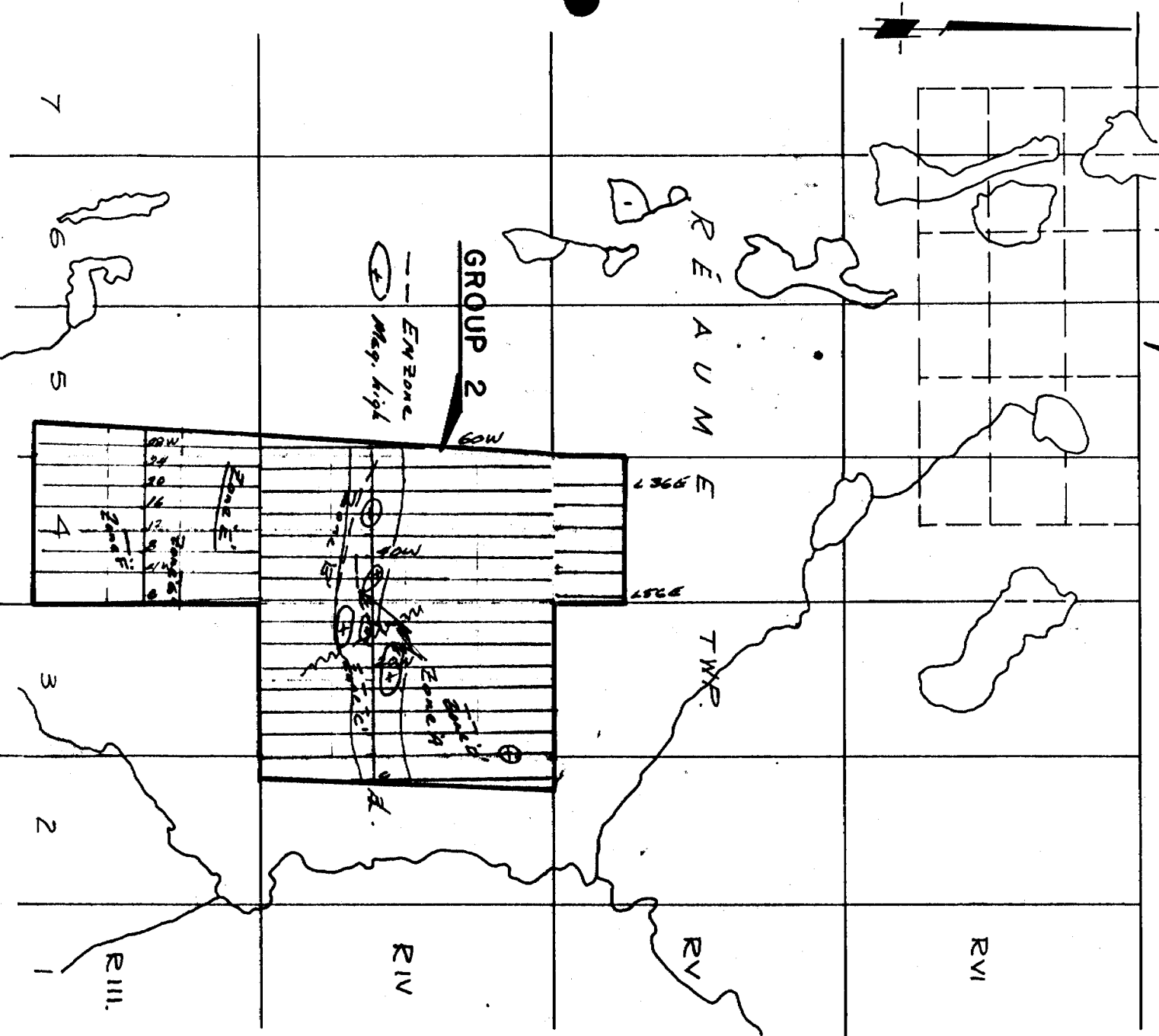
COULEE LEAD & ZINC MINES LIMITED

CLAIMS PLAN

Scale: 1 inch to 40 chains

TRG
June 1964

GROUP 1
FOURNIER TWP



COULEE LEAD & ZINC MINES LIMITED
GROUP 2
SUMMARY MAP

Scale:- 1inch to a half mile

TRE
Oct. 1964

Use one type of survey only



42A14NE0047 63.1372 REAUME

900

COULEE # 2

All dates 1964

Assessment Work Breakdown

- 1. Type of Survey MAGNETIC
- 2. Township or Area Reaume Township, Porcupine Mining Division,
- 3. Mining claim numbers 18 Claims - P - 60815-32 incl. (18 Electromagnetic and
..... Magnetic)
- 4. Number of miles of line cut 20.3
- * 5. Type of instrument used Sharpe MF-1 Fluxgate Magnetometer
- * 6. Scale constant or sensitivity 5 gamma/scale division
- * 7. Number of stations established Mag. = 1072
- 8. Summary of days worked (details on reverse side)
 Total technical (include consultants, draughting etc.) 28
 Total line-cutting see electromagnetic survey
- Total man-days (technical plus line-cutting) 28 x 7 = 196 man days
- Assessment days credit per claim 196/18 = 11 days per claim

9. Dated Jan. 13, 1965

Signed

Tom Gledhill
Tom Gledhill

* Complete only if applicable

Complete list of names, addresses and dates on reverse side

Assessment Work Breakdown

1. Technical

<u>Type of Work</u>	<u>Name & Address</u>	<u>Dates Worked</u>	<u>Hours</u>	<u>Days</u>
Magnetic Survey	(Geo.F.Beier) c/o Scope Mining & Exploration Consultants Limited, (John Sanders)	Sept. 13-18 incl.	72	9
	(A. Fleming)	Sept. 5	12	1.5
	(T. Kerr)	Sept. 5	12	1.5
	2200 - 372 Bay St., Tor.1, Ont.			
Totals			168	21.0

Consultants

<u>Name & Address</u>	<u>Dates Worked (specify in field or office)</u>	<u>Hours</u>	<u>Days</u>
Tom Gledhill (office)	2200 - 372 Bay St., Tor.1 - Oct. 1 & 2	16	2
T.M. Kerr (Office)	2200 - 372 Bay St., Tor.1 - Oct. 1 & 2	16	2
Totals		32	4

Draughtsman, Typing, others (specify)

<u>Name & Address</u>	<u>Type of Work</u>	<u>Dates Worked</u>	<u>Hours</u>	<u>Days</u>
M. Thomas) c/o Scope Mining & Exploration Cons. Ltd.	Drafting	Oct. 3, 4	16	2
M. Waite) Ltd. 2200 - 372 Bay St., Toronto 1, Ont.	Typing	Oct. 7	8	1
Totals			24	3

2. Line-Cutting

<u>Name</u>	<u>Address</u>	<u>Dates Worked</u>	<u>Hours</u>	<u>Days</u>
(SEE ELECTROMAGNETIC SURVEY)				
Totals				

Use one type of survey only

Submit in duplicate

COULEE # 2

All dates 1964

Assessment Work Breakdown

- 1. Type of Survey ELECTROMAGNETIC
- 2. Township or Area Reaume Township
- 3. Mining claim numbers 24 Claims (P-60844 - 46 inclusive (3))
- (P-60853 (1)) 6 Claims
- (P-64612-13 (2))
- (P-60815 - 32 inclusive (18)) 18 Claims
- 4. Number of miles of line cut 29.5 24 Claims
- * 5. Type of instrument used McPhar - Vertical loop - dip angle 1000 cps 5000 cps
- * 6. Scale constant or sensitivity 1/2° @ 1000 feet 1000 cps
- * 7. Number of stations established 1662 stations

8. Summary of days worked (details on reverse side)

Total technical (include consultants, draughting etc.) 67.5 x 7 472.5

Total line-cutting 111 x 1 111 days

Total man-days (technical plus line-cutting) 583.5 days

Assessment days credit per claim 583.5/24 claims 24.3 days/claim

9. Dated Jan. 13/65 Signed Tom Gledhill

Tom Gledhill

* Complete only if applicable

Complete list of names, addresses and dates on reverse side

Assessment Work Breakdown1. Technical

<u>Type of Work</u>	<u>Name & Address</u>	<u>Dates Worked</u>	<u>Hours</u>	<u>Days</u>
Electromagnetic Survey - Geo. F. Beier) c/o Scope - Sept. 19-30	Mining &)	incl.	144	18
- John Sanders) Exp. Cons. " " "	Ltd.,)	" " "	144	18
- A. Fleming) 2200-372 Bay - Sept. 6-7	St., Tor. 1,)	incl.	24	3
- T. Kerr) Ontario. - " " ")	" " "	24	3
- Tom Gledhill) - Oct. 16-18)	incl.	36	4.5
- Albert Talon) - " " ")	" " "	36	4.5
Totals			408	51.0

Consultants

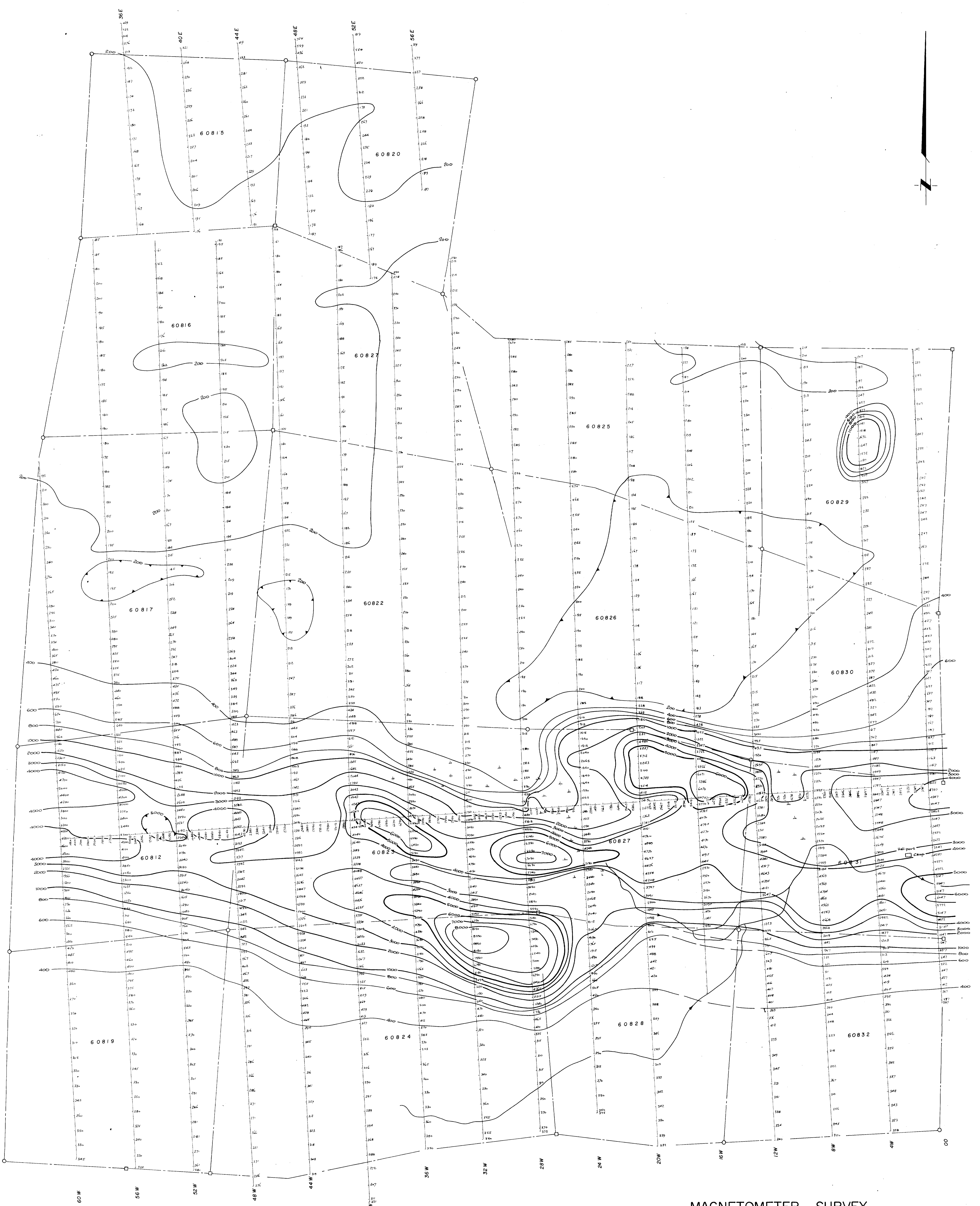
<u>Name & Address</u>	<u>Dates Worked (specify in field or office)</u>	<u>Hours</u>	<u>Days</u>
Tom Gledhill (Office) 2200 - 372 Bay St.,	- Oct. 5, 6, 7, 8, 9, Nov. 5, 6	56	7
T.M. Kerr (Office) TORONTO 1, Ont.	Oct. 5, 6	16	2
Totals		72	9

Draughtsman, Typing, others (specify)

<u>Name & Address</u>	<u>Type of Work</u>	<u>Dates Worked</u>	<u>Hours</u>	<u>Days</u>
M. Thomas) c/o Scope Min. - Drafting	& Expl. Cons.	Oct. 5, 6, 7 Nov. 7, 8, 9	36	4.5
M. Waite) Ltd., 2200 - - Typing	372 Bay St.,	Oct. 8, 9, Nov. 9	24	3
Totals			60	7.5

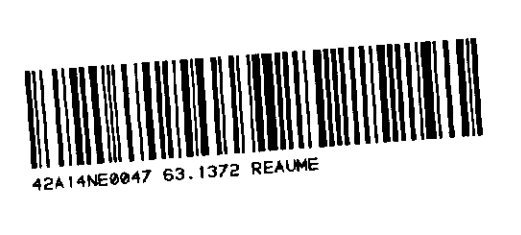
2. Line-Cutting

<u>Name</u>	<u>Address</u>	<u>Dates Worked</u>	<u>Hours</u>	<u>Days</u>
Shamus Young -	South Porcupine	Sept. 9 - Oct. 15	444	55.5
Edmund Brierre	" "	Sept. 9 - Oct. 15	444	55.5
Totals			888	111.0



Legend
 5000 = Contour interval
 1000 = Contour interval
 200 = Contour interval
 Magnetic Low

MAGNETOMETER SURVEY
 FOR
 COULEE LEAD AND ZINC MINES LIMITED
 GROUP I REAUME TWP ONTARIO
 SCALE 1" = 200' SEPT. 1964



200

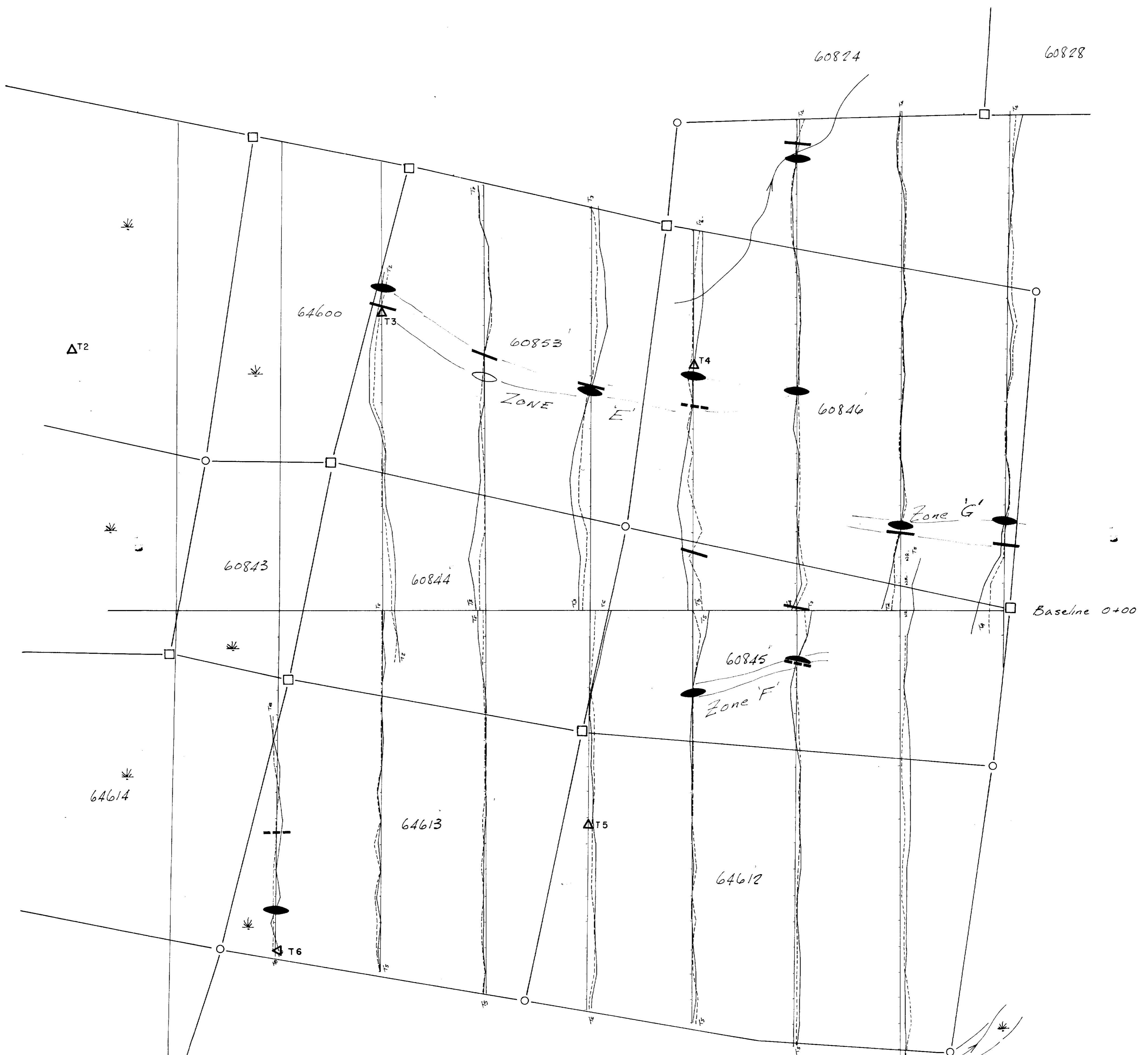
631372
 SCOPE CONSULTANTS, TORONTO



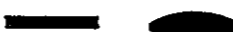



ELECTROMAGNETIC SURVEY
 FOR
 COULEE LEAD AND ZINC MINES LIMITED
 GROUP I REAUME TWP ONTARIO
 SCALE 1" = 200' SEPT. 1964

63.1372
 SCOPE CONSULTANTS, TORONTO 174.

N 25 T
 N 28 T
 N 24 W
 N 20 W
 N 16 W
 N 12 W
 N 8 W
 N 4 W
 L 0



LEGEND

-  CONDUCTOR
-  QUESTIONABLE CONDUCTOR
-  TRANSMITTER LOCATION
-  PROFILE Scale 1" = 20'

ELECTROMAGNETIC SURVEY
 for
 COULEE LEAD & ZINC MINES LTD.

REAUME TWP. ONTARIO 63 1272
 Scale 1" = 200' TRG
 October 1964

