



42A14NE0079 12 HANNA

010

Diamond Drilling

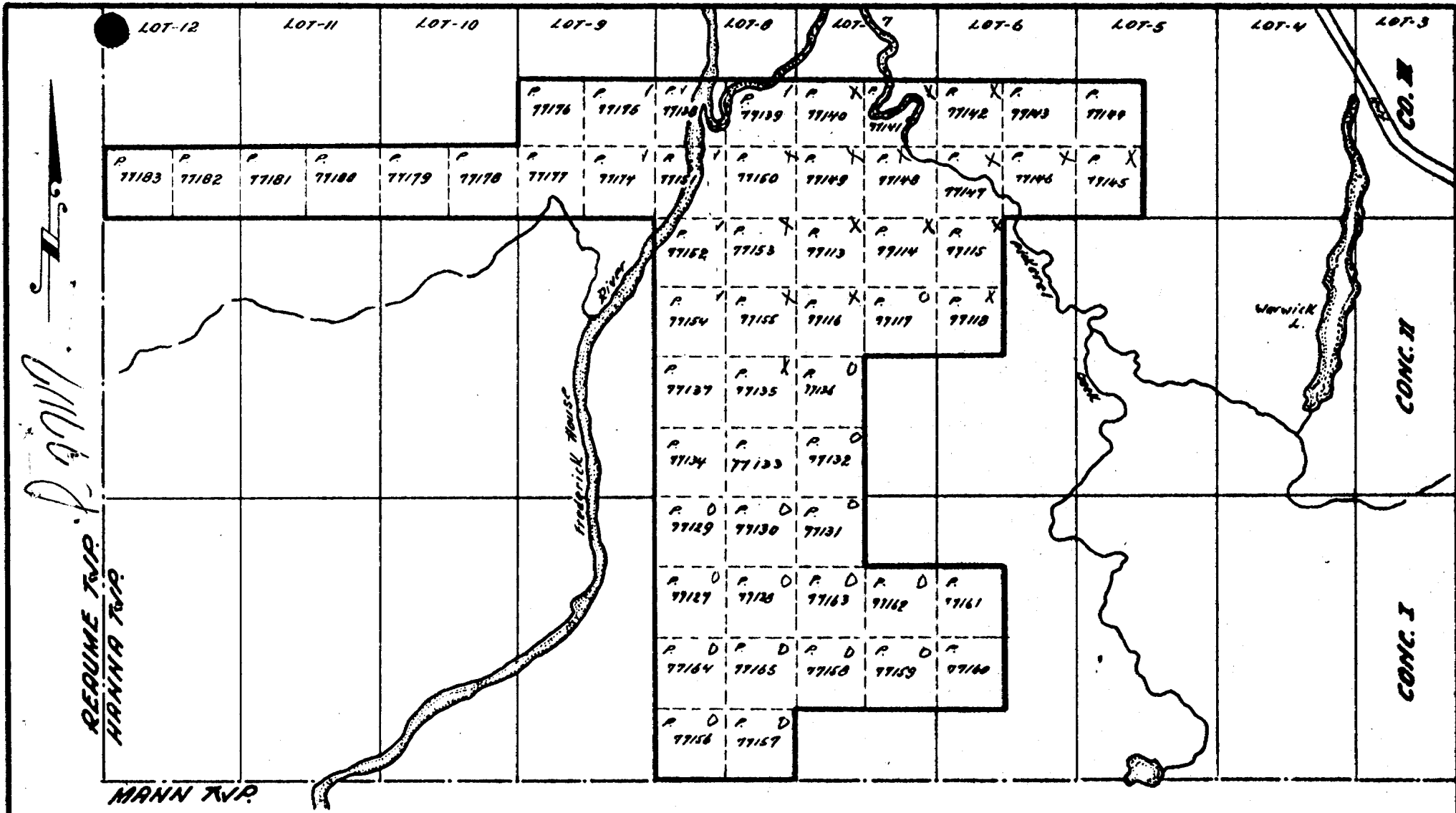
Township of Hanna

Report No: # 12

Work performed by: Cromarty Exploration Co. Limited

Claim No	Hole No	Footage	Date	Note
P.77117	C5-1	656'	Apr/65	(1)
	C5-2	432'	Apr/65	(1)
P.77115	C5-2A	555'	May/65	(1)
P.77147	C5-3	531'	May/65	(1)

Notes: (1) (June/74)



CROMARTY EXPLORATION COMPANY LIMITED
HANNA CLAIM GROUP
 HANNA TOWNSHIP
 ONTARIO

SCALE: 1" = 1/2 mile DATE: October, 1964.

REARME TWP.
 HANNA TWP.
 MANN TWP.

CONC. II
 CONC. I

EXPLORATION DEPARTMENT

Property Hanna Claims
 Location P - 77117
 Claim No. _____
 Location of Core _____

MCINTYRE
 PORCUPINE MINES LIMITED

DIAMOND DRILL LOG

Hole No. C5 #1 Sheet No. 3
 Length of Hole _____
 Date Started _____ Completed _____
 Core Logged by _____
 Date _____
 Elevation _____ Datum _____
 Co-ordinates of Collar
 North _____
 East _____

At _____ Surveys _____
 Dip _____ Bearing _____

From	To	Description of Core	Sample No.	FOOTAGE		Width	CORE ASSAYS												
				From	To														
481.5	503.5	(cont'd.)																	
		484.5-486.5 Pyrrhotite & chalcopyrite - 2% sulphides.	3317																
503.5	541	Peridotite: As before																	
541	571	Andesite: As before. Sharp contacts. Schistosity 10° to Core Axis. Sparse pyrite.																	
571	656	Peridotite: As before.																	
		601-618 Numerous hairline to 1 ft. sections of quartz-carbonized plus pyrrhotite.	3318																
END OF HOLE																			

EXPLORATION DEPARTMENT

MCINTYRE
PORCUPINE MINES LIMITED

DIAMOND DRILL LOG

Property Hanna Twp. Claims

Location

Claim No.

Location of Core

P - 77114 : 220 ft.
P - 77115 : 335 ft.
555 ft.

	At	Surveys	Dip	Bearing

Hole No. C5 #2a Sheet No. 2

Length of Hole

Date Started Completed

Core Logged by

Date

Elevation Datum

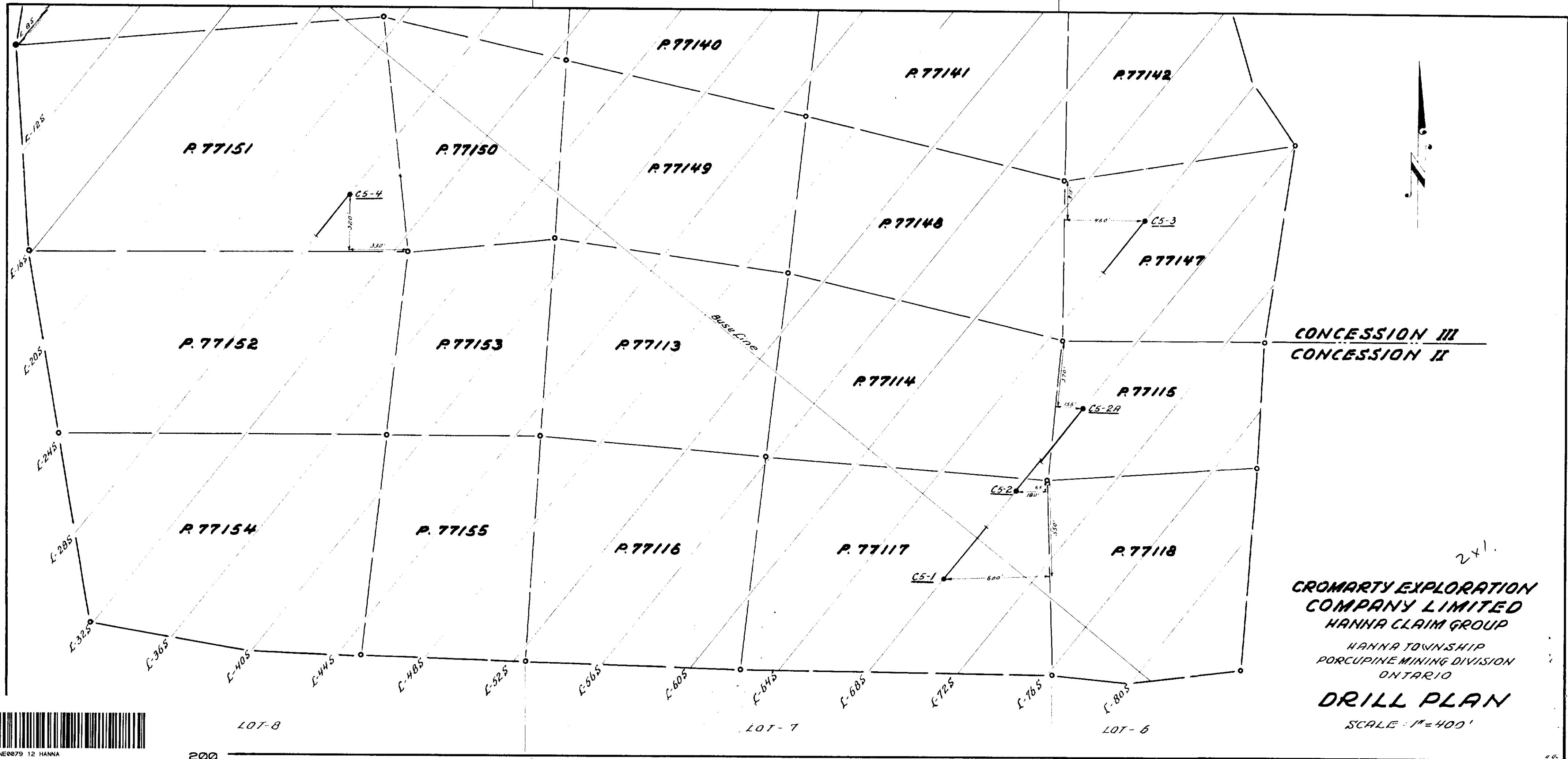
Co-ordinates of Collar

North

East

From	To	Description of Core	Sample No.	FOOTAGE		Width	CORE ASSAYS								
				From	To										
461	490	<u>Crenulated Zone:</u> Highly contorted med. gray tuff. 1/8" layers of bk. graphite & silica & 1/2" tuff layers.													
		461-475 10% py.	3476												
		463-465 <u>Feldspar Porphyry dike. Contacts 30° to C.A.</u> 1/4" white Feldspar phenocrysts; med. gray matrix. 2% diss. py.	3477 3478 3479												
		475-490 1% " " Highly carbonatized.													
490	505	<u>Tuff:</u> Med. gray. Cse. Text. 1% diss. py.													
		504 6" Feldspar porphyry as before.													
505	555	<u>Andesite:</u> Med. olive green. Talcosse & soft. Schistose 80° to C.A. Very little diss. min. less than 0.5%. Highly carbonatized. Rock corresponds to that cut in d.d.h. C5 #2 labelled serpentinite shear & short sections have same appearance.													
		505-520 Many conformable dk. silica injections 1/8" in width.													

" END OF HOLE "



42A14NE0079 12 HANNA

200

2x1
**CROMARTY EXPLORATION
 COMPANY LIMITED**
 HANNA CLAIM GROUP
 HANNA TOWNSHIP
 PORCUPINE MINING DIVISION
 ONTARIO
DRILL PLAN
 SCALE: 1" = 400'

N-40° E

LOCATION: Grid No 1
L-685-300'W

C5-1

Surface

100'

100'

200'

200'

300'

300'

400'

400'

500'

500'



LEGEND:

- 2 peridotite
- L andesite



42A14NE0079 12 HANNA

210

CROMARTY EXPLORATION COMPANY LIMITED
HANNA CLAIM GROUP

HANNA TOWNSHIP
 PORCUPINE MINING DIVISION
 ONTARIO

SECTION DRILL HOLE C5-1

SCALE: 1" = 40'

DATE: MAY, 1965.

11477

N-40°-E

LOCATION
Grid No 1-Line 685
350'E

LOCATION
Grid No 1-Line 685
950'E

C5-2

Surface

C5-2A

100'

100'

200'

200'

300'

300'

400'

400'

LEGEND:

- 3 Tuff
- 2 Peridotite
- Andesite

Ag 0.04
1'0
Ag 0.02
1'0
Cu 0.06 - Ag 0.02
3'0
Cu 0.16 - Ag 0.04
4'0

Cu 0.07
3'0

Cu 0.22
0'3

Cu 0.52 - Ag 0.04
0'3

Sr 1.4
0'6

**CROMARTY EXPLORATION COMPANY LIMITED
HANNA CLAIM GROUP**

HANNA TOWNSHIP
PORCUPINE MINING DIVISION
ONTARIO

SECTION DRILL HOLES C5-2 & C5-2A

SCALE: 1" = 40'

DATE: June, 1965.



42A14NE0079 12 HANNA

LOCATION:
Grid No 1- Line 645
2000' E

S-40° W

C5-3 surface

100'

100'

200'

200'



300'

300'

400'

400'

LEGEND:

-  Gabbro
-  Andesite

Cu - Ni - Ag
 007 - Ni - Tr
 3'0
 008 - 008 - Tr
 3'0
 008 - 008 - Tr
 3'0
 008 - Tr
 4'0
 008 - Tr
 3'0
 007 - Ni
 3'0

331'0

147/8

CROMARTY EXPLORATION COMPANY LIMITED
HANNA CLAIM GROUP

HANNA TOWNSHIP
PORCUPINE MINING DIVISION
ONTARIO

SECTION DRILL HOLE C5-3

SCALE: 1" = 40'

DATE: June, 1965.

