



42A14NE0080 10 HANNA

010

Diamond Drilling

Township of Hanna

Report No: # 10

Work performed by: New Lorie Mines Limited

Claim No	Hole No	Footage	Date	Note
P.67444	L-1	594'	1965	(1)
P.67440	L-2	502'	1965	(1)
P.67448	L-3	561'	1965	(1)
		<u>1157'</u>		

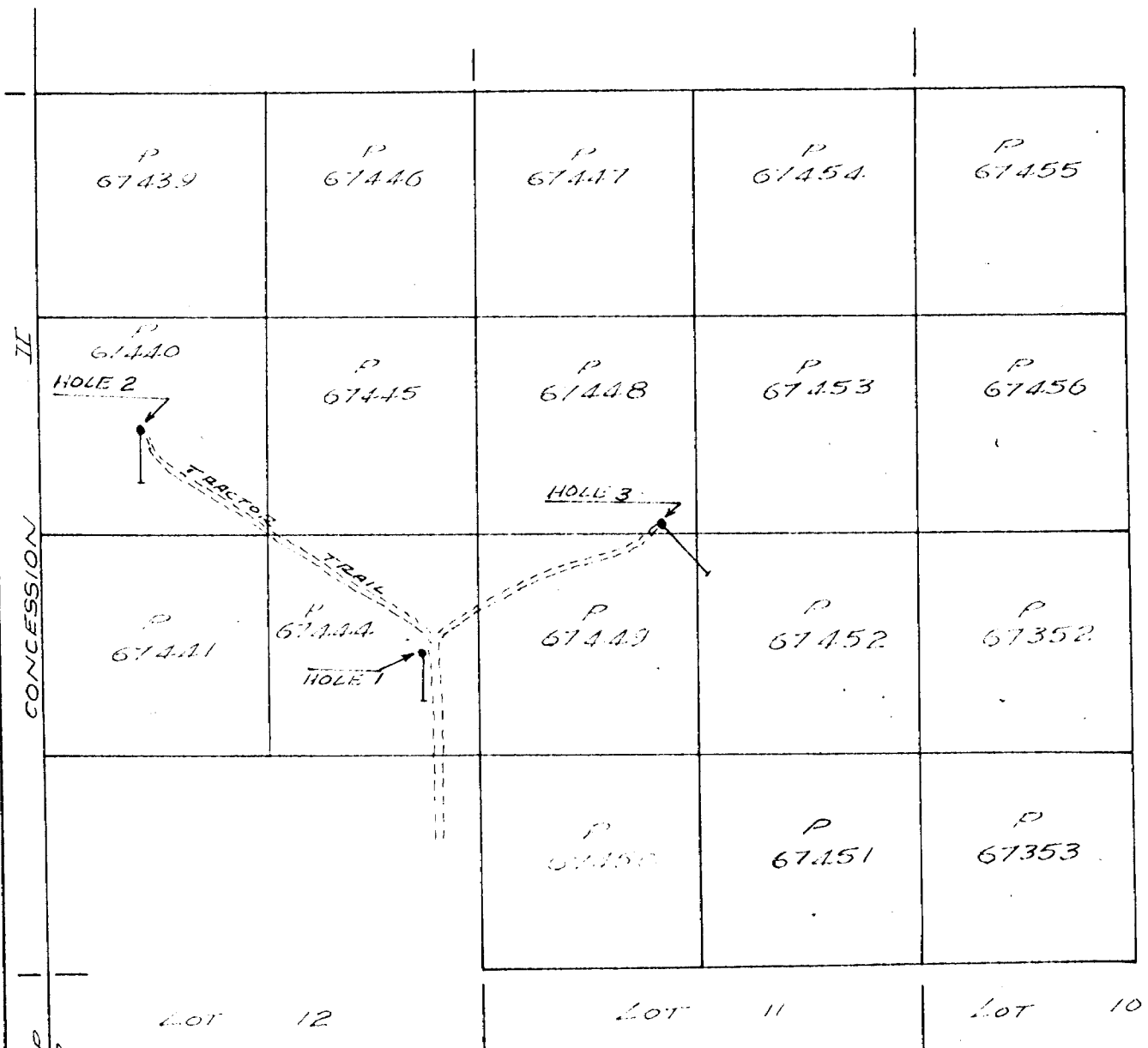
Notes: (1) (June /74)

NEW LORIE MINES LTD.

HANNA TWP. PORCUPINE DIST.

PLAN OF 1965 DRILL PROGRAM

SCALE: 1" = 1000'



II
CONCESSION

REAUME TWP
HANNA TWP

N

XERO COPY

DIAMOND DRILL RECORD

PROPERTY New Lorie Mines Limited - HANNA TWP

LOCATION: LAT. 20 / 00N
 DEP. 43 / 00W

ELEVATION OF COLLAR.....

DATUM.....

DIRECTION AT START: BEARING Due S Ast.
 DIP Collar -55°

LOGGED BY L.G.P. HOR. COMP.....

PURPOSE OF HOLE..... VER. COMP.....

TESTS

Ft.	Dip.	Ast. Bearing	Ft.	Dip.	Ast. Bearing	Core	
						Ft. Received	p.c. Recovery
590'	59°						

HOLE NUMBER L-1

SHEET NO. 1

SECTION FROM 0 TO 594

STARTED.....

COMPLETED.....

ULTIMATE DEPTH 594

PROPOSED DEPTH.....

DRILLED BY Continental Dia. Drill Co.

HONEY PRINTING SERVICE, TORONTO-4604

XERO COPY

Distance		ROCK	DESCRIPTION	Sample No.	Length Ft.	ANALYSIS						
From	To					Au.	Ag.	Pb.	Zn.	Cu.		Ave.
0	220.0	Casing										
220.0	412.0	Dacite Flows	Light grey, uniformly fine grained, some flow tops visible. These seem to be facing north.									
412.0	423.0	Bedded tuffs	Intensely graphitic, varying amounts (2 - 10%) py. throughout.									
423.0	465.5	Feldspar porphyry	Light grey, sheared and sericitized. Grades into darker somewhat more basic material uniformly porphyritic. Lower contact at 40° to C.A.	5013	2.3	Nil	Nil					
465.5	486.0	Greywacke(?)	Dense, fine grained uniform greyrock, fractured brecciated									
486.0	496.5	Feldspar Porphyry	Irregular contacts, approx. 80° to C.A.									
496.5	514.0	Greywacke(?)	Somewhat sheared, sericitized, 1' lost core at 511' and again at 513'	5012	0.7	Nil	Nil					
514.0	549.0	Feldspar Porphyry	As 423 - 465.5									
549.0	594.0	Greywacke	Some breccia, irregular quartz-carbonate stringers, occasional small amount py.									
			594' - END OF HOLE									

XERO COPY

DIAMOND DRILL RECORD

PROPERTY New Lorie Mines Limited - HANNA TWP
 LOCATION: LAT. 33 / 00N
 DEP. 60 / 00W
 ELEVATION OF COLLAR _____
 DATUM _____
 DIRECTION AT START: BEARING Due S. Ast.
 DIP -55°
 LOGGED BY _____ HOR. COMP. _____
 PURPOSE OF HOLE _____ VER. COMP. _____

TESTS

Ft.	Dip.	Ast. Bearing	Ft.	Dip.	Ast. Bearing	Core	
						Ft. Received	p.c. Recovery
500'	-49°						

HOLE NUMBER L-2
 SHEET NO. 1 of 1
 SECTION FROM 0 TO 502
 STARTED _____
 COMPLETED _____
 ULTIMATE DEPTH 502
 PROPOSED DEPTH _____

DRILLED BY Continental Diamond Drill Co.

HONEY PRINTING SERVICE, TORONTO—4604

Distance		ROCK	DESCRIPTION	Sample No.	Length Ft.	ANALYSIS									
From	To					Au.	Ag.	Pb.	Zn.	Cu.			Ave.		
0	135.0	Casing													
135.0	309.0	Dacite	Interbedded flow breccias, tuffs, agglomerates, small amounts of graphite. Rock about dacite in composition. A great many fracture filling veinlets of quartz-carbonate.	5021	2.7	Nil	Nil								
309.0	321.0	Dacite flow	Light grey, fine grained. Some areas show feldspar porphyry.												
321.0	322.0	Tuffs	Graphitic, approx. 5 - 6% py.												
322.0	324.0	Dacite	As 135 - 309												
324.0	330.0	Tuffs	Graphitic, 3 - 10% py.												
330.0	347.0	Agglomerate	Some graphite.												
347.0	377.0	Tuffs	Pyritiferous, graphitic.	5016	2.0	0.08	Nil	Nil							
				5017	1.5	Nil	Nil								
				5018	2.0	Nil	Nil								
377.0	383.0	Feldspar porphyry dyke	Feldspar-Porphyry, 3-5% disseminated py.	5020	2.0	Nil	Nil								
				5019	2.0	Nil	Nil								
383.0	385.0	Gabbro	Chilled edge phase.												
385.0	502.0	Gabbro	Coarse grained grey gabbro. Large lath-like feldspar crystals comprising 25% of rock. Crystals up to 1" in length.												
			502' - END OF HOLE												

XERO COPY

XERO COPY

XERO COPY

PROPERTY New Lorie Mines Limited - HADNA TWP

DIAMOND DRILL RECORD

HOLE NUMBER L-3

LOCATION: LAT. 27 4 00N
 DEP. 28 7 00W

TESTS

Ft.	Dip.	Ast. Bearing	Ft.	Dip.	Ast. Bearing	Core	
						Ft. Received	p.c. Recovery
738	-63°						

SHEET NO. 1 of 2

ELEVATION OF COLLAR.....

SECTION FROM 0 TO 561

DATUM.....

STARTED.....

DIRECTION AT START: BEARING S 45 E Ast.
 DIP. -55°

COMPLETED.....

LOGGED BY J.A.S. HOR. COMP.....

ULTIMATE DEPTH 740

PURPOSE OF HOLE..... VER. COMP.....

DRILLED BY Continental Diamond Drill Co.

PROPOSED DEPTH.....

HONEY PRINTING SERVICE, TORONTO-4404

Distance		ROCK	DESCRIPTION	Sample No.	Length Ft.	ANALYSIS						
From	To					Au.	Ag.	Pb.	Zn.	Cu.	Avc.	
0	186.0	Casing	Overburden									
186.0	294.0	Feldspar porphyry	Grey feldspar porphyry slightly sheared, sericitic alteration. Fine py. along shear planes. Variable py. content 0-2%	5023	5.0	Nil	Nil					
294.0	298.0	Greywacke(?)	Buff to grey colour. Dense, fine grained uniform textured rock, slight suggestion of bedding.									
298.0	299.0	Feldspar porphyry	As 186 - 294 but less sericitic.									
299.0	304.0	Greywacke(?)	As 299 - 304.									
304.0	305.0	Feldspar porphyry	As 298 - 299.									
305.0	491.0	Greywacke(?)	Colour and texture as before with numerous veinlets and stringers quartz-carbonate with a little disseminated py.	5022	1.5	Nil	Nil					
491.0	494.0	Feldspar porphyry	As 186 - 294 but less py. content.									
494.0	529.0	Greywacke(?)	Becoming greener and more chloritic. Quartz feldspar veinlets at odd intervals.									
529.0	555.5	Feldspar porphyry	As 491 - 494.									
555.5	557.0	Quartz diorite	Dyke, finely disseminated py.									
557.0	561.0	Feldspar porphyry	As 491 - 494.									

XERO COPY

XERO COPY

XERO COPY

DIAMOND DRILL RECORD

PROPERTY New Lorie Mines Limited

LOCATION: LAT. 27 / 00N
 DEP. 28 / 00W

ELEVATION OF COLLAR _____

DATUM _____

DIRECTION AT START: BEARING S 45 E Ast.
 DIP -55°

LOGGED BY J.A.S. HOR. COMP. _____

PURPOSE OF HOLE _____ VER. COMP. _____

TESTS

Ft.	Dip.	Ast. Bearing	Ft.	Dip.	Ast. Bearing	Core	
						Ft. Received	p.c. Recovery
738	-63°						

HOLE NUMBER L-3

SHEET NO. 2 of 2

SECTION FROM 561 TO 740

STARTED _____

COMPLETED _____

ULTIMATE DEPTH 740

PROPOSED DEPTH _____

DRILLED BY Continental

MONEY PRINTING SERVICE, TORONTO—4304

Distance		ROCK	DESCRIPTION	Sample No.	Length Ft.	ANALYSIS					Ave.
From	To					Av.	Ag.	Pb.	Zn.	Cu.	
561.0	571.0	Quartz Diorite	Dyke. Contact at 25% to C.A. Disseminated cubic py.								
571.0	711.0	Feldspar porphyry	As 491 - 494	5024 5025	1.4 .9	Nil Nil	Nil Nil				
711.0	718.0	Andesite	Inclusion upper contact ground. Lower contact. at 45° to C.A. Massive, fairly fine grained	5026	1.0	Nil	Nil				
718.0	733.0	Feldspar Porphyry	3-5% crystalline py. for first 3' of section, after that quite sparse.								
733.0	740.0	Andesite	As 711 - 718. 740' - END OF HOLE								

XERO COPY

XERO COPY

XERO COPY

NEW LORIE MINES LTD.

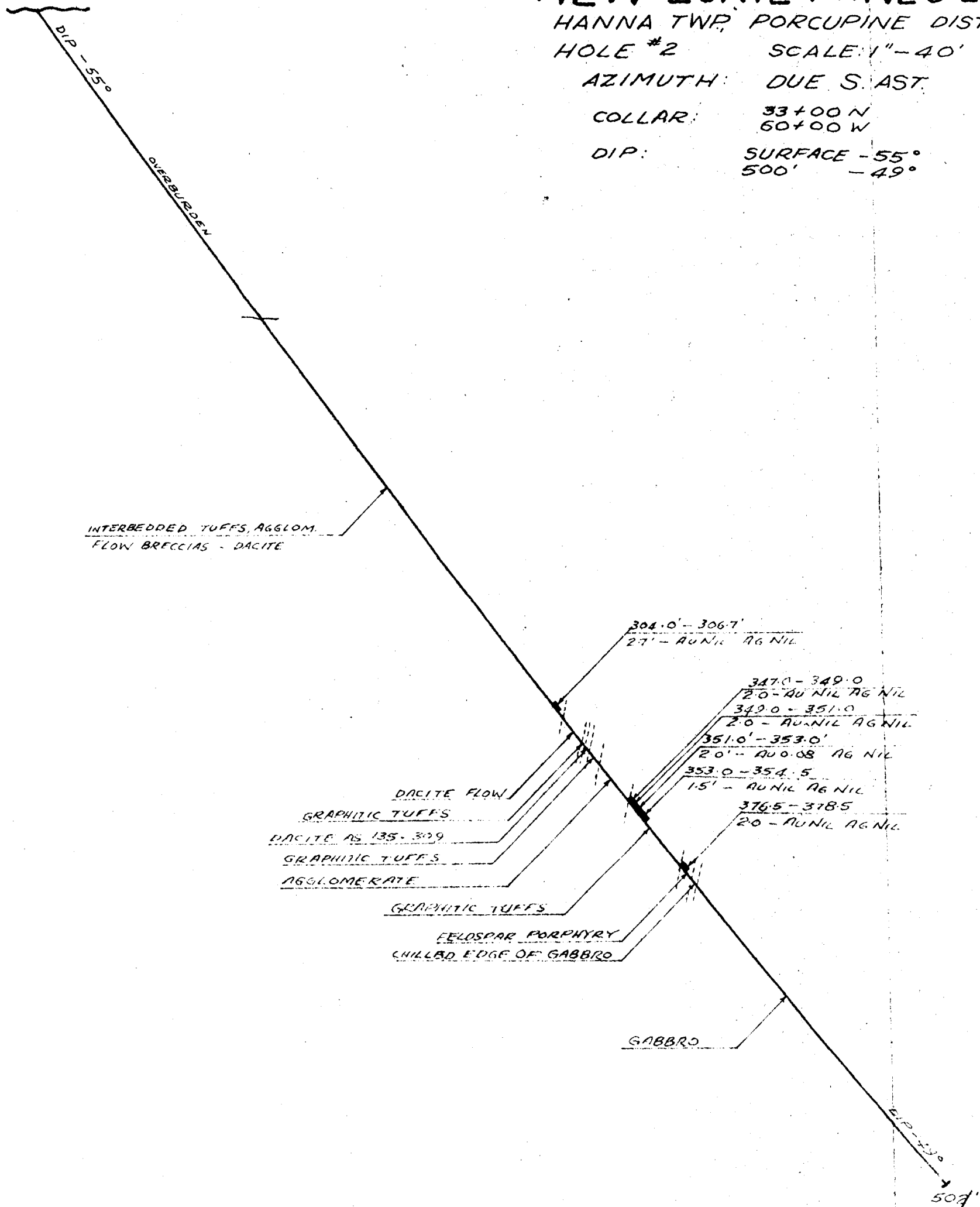
HANNA TWP. PORCUPINE DIST.

HOLE #2 SCALE: 1" = 40'

AZIMUTH: DUE S. EAST

COLLAR: 33+00 N
60+00 W

DIP: SURFACE - 55°
500' - 49°



APRIL '65 JAS

NEW LORIE MINES LTD.

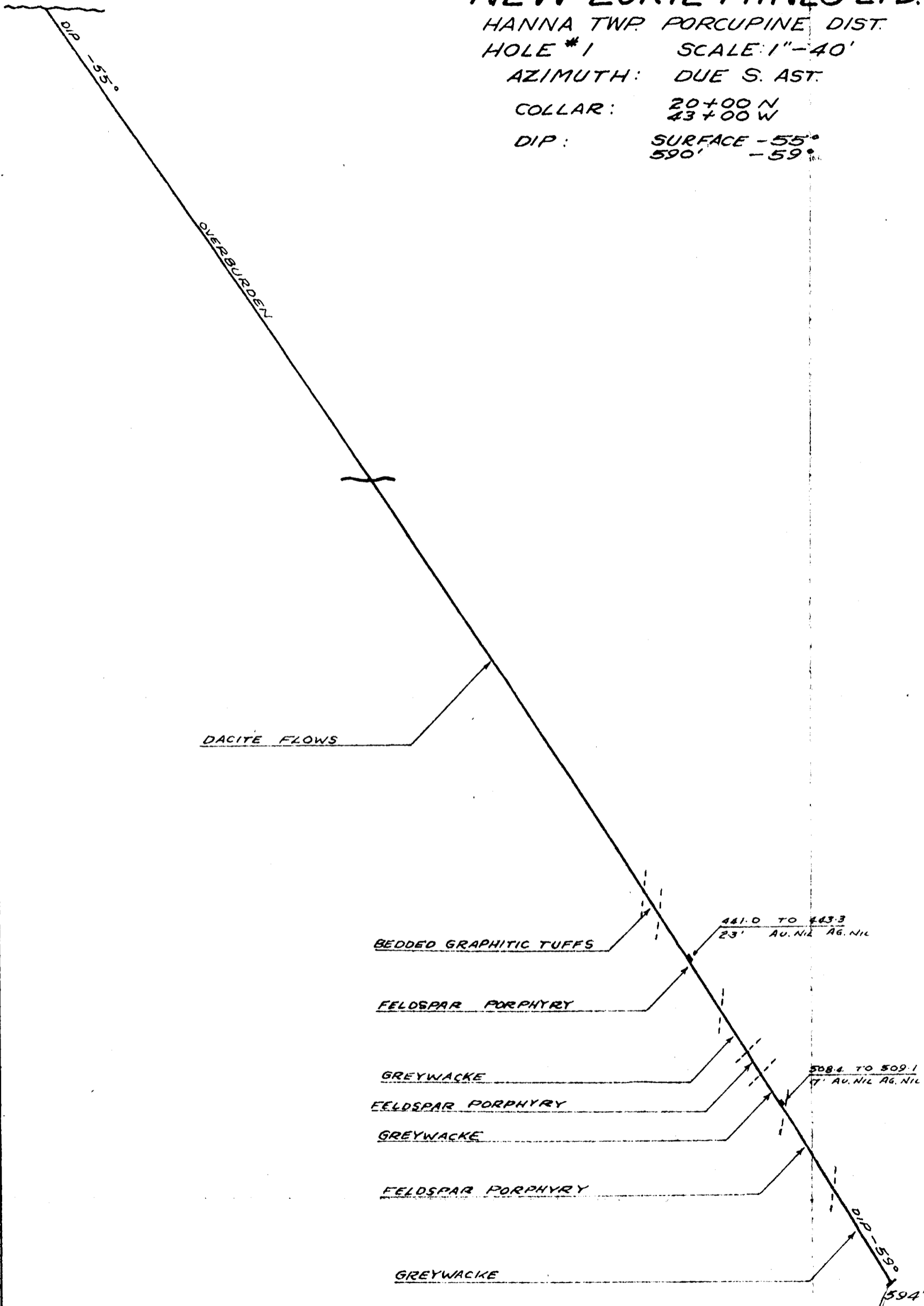
HANNA TWP. PORCUPINE DIST.

HOLE #1 SCALE: 1"=40'

AZIMUTH: DUE S. AST.

COLLAR: 20+00 N
43+00 W

DIP: SURFACE -55°
590' -59°



APRIL '65 *JKS*

[Handwritten Signature]

NEW LORIE MINES LTD.

HANNA TWP. PORCUPINE DIST.

HOLE #3 SCALE 1"=40'

AZIMUTH: S 45 E AST.

COLLAR: 27+00 N
28+00 W

DIP: SURFACE - 55°
738' - 63°

