



42A14NE0081 11 HANNA

010

Diamond Drilling

Township of Hanna

Report No: # 11

Work performed by: Baska Uranium Mines Limited

Claim No	Hole No	Footage	Date	Note
P.67462	R-101A	341'	Jan/65	(1)
	R-102	660'	Feb/65	(1)
	R-103	251'	1965	(1)
P.66174	R-104	307'	1965	(1)
	<u>4</u>	<u>1559'</u>		

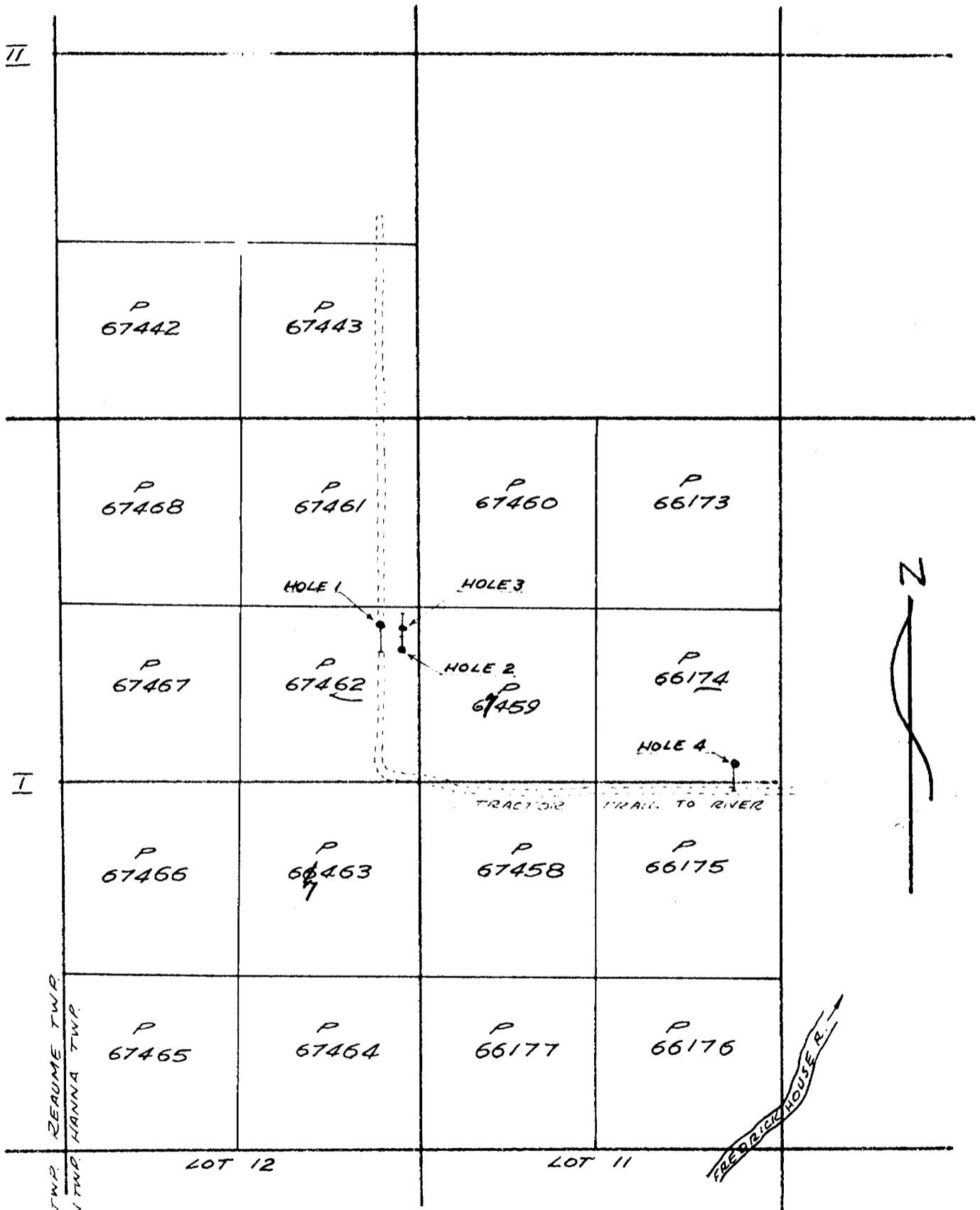
Notes: (1) (June/74)

BASKA URANIUM MINES LTD.

HANNA TWP PORCUPINE DIST.

PLAN OF 1965 DRILLING

SCALE: 1" = 1000'



APRIL '65 JAS.

PROPERTY Baska Uranium Mines Limited - HANNA TWP

DIAMOND DRILL RECORD

HOLE NUMBER R-101A

LAT. 15 / 00S

TESTS

LOCATION: DEP. 42 / 00W

Ft.	Dip.	Ast. Bearing	Ft.	Dip.	Ast. Bearing	Core	
						Ft. Received	p.c. Recovery
340	45°	Due S				292.7	86%

SHEET NO. 1

ELEVATION OF COLLAR _____

SECTION FROM 0 TO 222.8

DATUM _____

STARTED January 14, 1965

DIRECTION AT START: BEARING Due S Ast.

COMPLETED February 1, 1965

DIP -53°

ULTIMATE DEPTH 341'

LOGGED BY J.A.S. HOR. COMP. _____

DRILLED BY Continental Diamond Drill Co.

PROPOSED DEPTH _____

PURPOSE OF HOLE _____ VER. COMP. _____

HONEY PRINTING SERVICE, TORONTO—4604

Distance		ROCK	DESCRIPTION	Sample No.	Length Ft.	ANALYSIS						
From	To					Au.	Ag.	Pb.	Zn.	Cu.	Ave.	
0	150.0		Casing through overburden									
150.0	157.0		Ground core setting casing in bedrock									
157.0	208.5	Gabbro	Med. grained, massive, feldspar crystals 1/8 to 1/4 inch in size. Rock very low in ferro-magnesian minerals. Considerable chlorite as halos around feldspar early in sections. Rock becomes increasingly chloritic and shattered toward end of section. <u>Lost Core:</u> 194.0 - 195.1 198.9 - 200.0 201.0 - 202.0 Green sludge return at these sections would indicate chloritic shears.									
208.5	212.2		Lost core.									
212.2	214.6	Tuff	Banded graphitic tuff at 15 - 25° to C.N. 2% disseminated py. in lighter bands.									
214.6	220.2	Talc Schist	Talc-chlorite schist. Light py. in fractures.	5002	2.2	Nil	Nil					
220.2	222.8		Lost core.									

XERO COPY

XERO COPY

XERO COPY

DIAMOND DRILL RECORD

PROPERTY Baska Uranium Mines Limited
 LOCATION: LAT. 15 / 00S
 DEP. 42 / 00W
 ELEVATION OF COLLAR.....
 DATUM.....
 DIRECTION AT START: BEARING.....
 DIP.....
 LOGGED BY..... HOR. COMP.....
 PURPOSE OF HOLE..... VER. COMP.....

TESTS							
Ft.	Dip.	Ast. Bearing	Ft.	Dip.	Ast. Bearing	Core	
						Ft. Received	p.c. Recovery

HOLE NUMBER R-101A
 SHEET NO. 2
 SECTION FROM 222.8 TO 296.0
 STARTED.....
 COMPLETED.....
 ULTIMATE DEPTH.....
 PROPOSED DEPTH.....

DRILLED BY.....

HONEY PRINTING SERVICE, TORONTO—4604

Distance		ROCK	DESCRIPTION	Sample No.	Length Ft.	ANALYSIS						
From	To					Av.	Ag.	Pb.	Zn.	Cu.		
222.8	254.3	Talc-Chlorite	T.C. schist interbedded with graphitic tuffs at 15° to 25° to C.N. Occasional tiny stringers py. <u>Lost Core:</u> 233.0 - 224.1 243.0 - 243.5 224.8 - 227.0 244.0 - 245.0 228.1 - 230.0 232.0 - 239.0									
254.3	285.0	Graphitic Tuff	Dark grey to black massive, fine grained, numerous py crystals scattered throughout. Fracture-filling calcite stringers at 15 - 25° to C.N. Also set of same stringers following core axis. <u>Lost Core:</u> 263.0 - 264.4 273.6 - 277.2 264.8 - 266.0 279.0 - 281.5 267.1 - 268.0 282.0 - 284.9 272.0 - 273.4									
285.0	296.0	Talc-Chlorite Schist	Remnants of graphitic tuff, with small amounts of py and calcite occurring throughout.									

XERO COPY
 XERO COPY
 XERO COPY

DIAMOND DRILL RECORD

PROPERTY Baska Uranium Mines Limited
 LOCATION: LAT. 15 / 00S
 DEP. 42 / 00W
 ELEVATION OF COLLAR.....
 DATUM.....
 DIRECTION AT START: BEARING.....
 DIP.....
 LOGGED BY..... HOR. COMP.....
 PURPOSE OF HOLE..... VER. COMP.....

TESTS

Ft.	Dip.	Ast. Bearing	Ft.	Dip.	Ast. Bearing	Core	
						Ft. Received	p.c. Recovery

HOLE NUMBER R-101A
 SHEET NO. 3
 SECTION FROM 296.0 TO 341.0
 STARTED.....
 COMPLETED.....
 ULTIMATE DEPTH.....
 PROPOSED DEPTH.....

DRILLED BY.....

HONEY PRINTING SERVICE, TORONTO—4804

Distance		ROCK	DESCRIPTION	Sample No.	Length Ft.	ANALYSIS						
From	To					Au.	Ag.	Pb.	Zn.	Cu.		Ave.
296.0	341.0	Graphitic Tuff	Uniform dark grey, fine grained. Bedding mainly at 15° - 20° to C.N. Occasional 1/4 inch py stringers and scattered py crystals throughout. Stockwork of calcite fracture filling from 310 to 311. 1 inch massive py stringer at 321.0. Quartz-calcite stringer almost following core axis from 326.0 - 327.5. <u>Lost Core:</u> 296.0 - 302.5 329.0 - 330.6 311.3 - 314.4 336.2 - 337.0 322.5 - 323.7 337.6 - 339.0 Hole abandoned at 341' due to extreme caving (3 cementings during progress of hole) and 40' of sand accumulating in hole from leaking fractures in rock.									

XERO COPY

XERO COPY

XERO COPY

BASKA URANIUM MINES LTD.

HANNA TWP, PORCUPINE DIST.

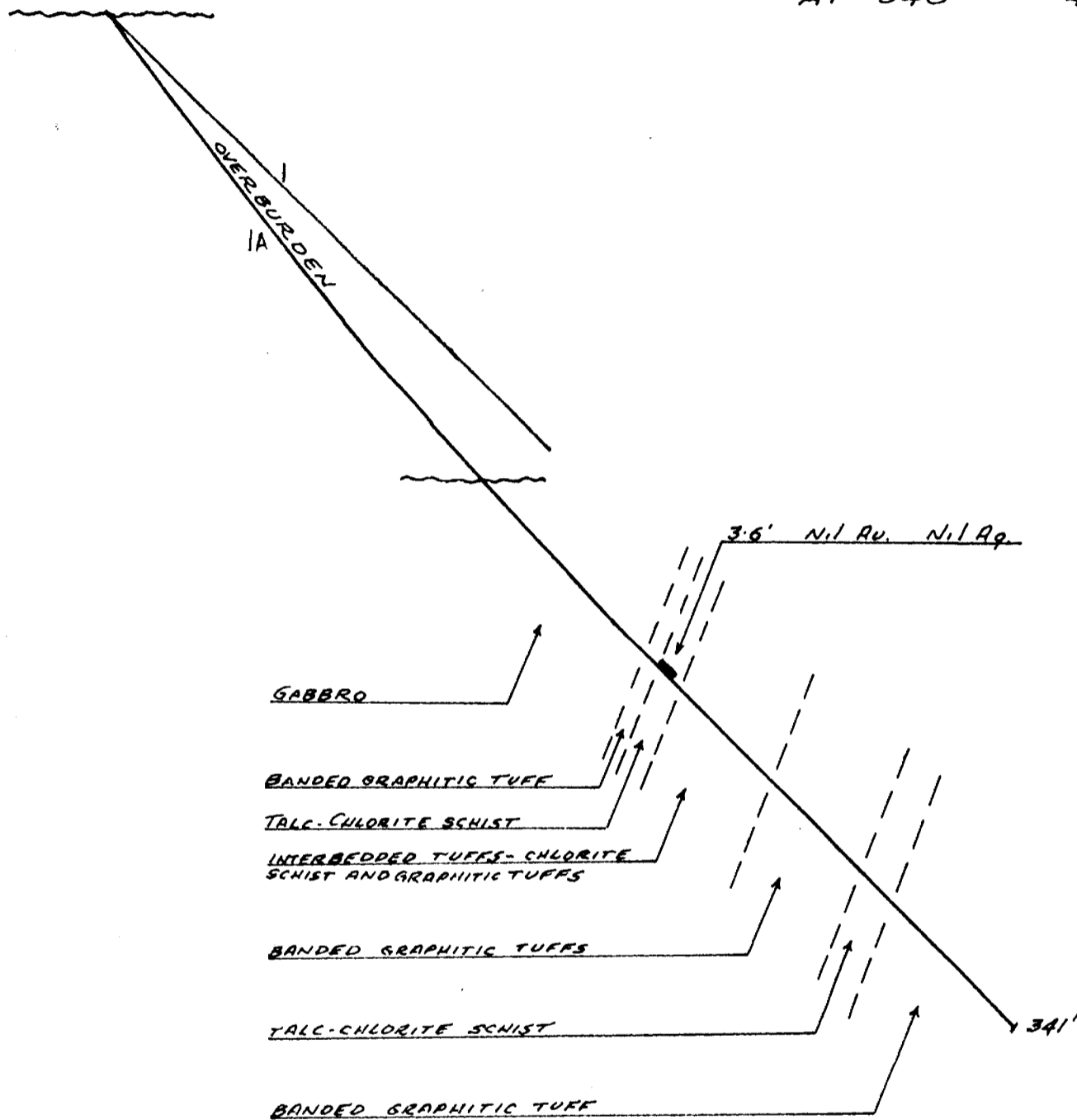
HOLE N° 1 SCALE 1" = 40'

AZIMUTH - AST. SOUTH

COLLAR 42+00W, 1500S

DIP: AT SURFACE - 53°

AT 340' - 45°



DIAMOND DRILL RECORD

TESTS

HOLE NUMBER R-102
 SHEET NO. 1
 SECTION FROM 0 TO 660.0
 STARTED February 2, 1965
 COMPLETED _____
 ULTIMATE DEPTH 660!
 PROPOSED DEPTH _____

Ft.	Dip.	Ast. Bearing	Ft.	Dip.	Ast. Bearing	Core	
						Ft. Received	p.c. Recovery
659'	42°						

PROPERTY Baska Uranium Mines Limited - HANNA TWP
 LOCATION: LAT. 18 / 00S
 DEP. 39 / 00W
 ELEVATION OF COLLAR _____
 DATUM _____
 DIRECTION AT START: BEARING Due North Ast.
 DIP -55°
 LOGGED BY J.A.S. HOR. COMP. _____
 PURPOSE OF HOLE _____ VER. COMP. _____

DRILLED BY Continental Dia. Drill Co.

HONEY PRINTING SERVICE, TORONTO-4604

Distance		ROCK	DESCRIPTION	Sample No.	Length Ft.	ANALYSIS					
From	To					Au.	Ag.	Pb.	Zn.	Cu.	Ave.
0	157.0	Overburden	Clay to approx. 100'. Boulder gravel from there to 157.0'								
157.0	164.0	Lost Core	Setting casing								
164.0	179.0	Bedded Graphitic Tuffs	Graphitic, shearing following core axis and containing 3 - 5% py as stringers and blobs throughout.								
179.0	207.5	Interbedded dacite and flow breccia	Same rock type as 164.0 - 179.0 but negligible shearing or graphite. Occasional tiny stringer of calcite cutting core at any angle. Some flow tops visible.								
207.5	211.0	Bedded graphitic tuffs	As section 164.0 - 179.0 except shearing and py stringers at 45 - 55° to core axis.	5003	3.6	Nil	Nil				
211.0	440.5		As section 179.0 - 207.5								
440.5	463.0		As section 164.0 - 179.0	5004	5.0	Nil	Nil				
463.0	477.0		As section 179.0 - 207.5	5005	5.0	Nil	Nil				
477.0	508.0		As section 164.0 - 179.0								
508.0	660.0		As section 179.0 - 207.5	5006	2.3	Nil	Nil				

XERO COPY

XERO COPY

XERO COPY

PROPERTY Baska Uranium Mines Limited
 LOCATION: LAT. 18 / 00S
 DEP. 39 / 00W
 ELEVATION OF COLLAR. -
 DATUM -
 DIRECTION AT START: BEARING
 DIP
 LOGGED BY HOR. COMP.
 PURPOSE OF HOLE VER. COMP.

DIAMOND DRILL RECORD

TESTS

Ft.	Dip.	Ast. Bearing	Ft.	Dip.	Ast. Bearing	Core	
						Ft. Received	p.c. Recovery

HOLE NUMBER R-102
 SHEET NO. 2
 SECTION FROM TO
 STARTED
 COMPLETED
 ULTIMATE DEPTH
 PROPOSED DEPTH

DRILLED BY

HONEY PRINTING SERVICE, TORONTO—4604

Distance		ROCK	DESCRIPTION	Sample No.	Length Ft.	ANALYSIS								
From	To					Au.	Ag.	Pb.	Zn.	Cu.		Ave.		
			6" quartz-calcite stringer of quartz-calcite at 564.5 - 565.0											
			12" quartz-calcite stringer of quartz-calcite at 569.0 - 570.0											
			2" quartz-calcite stringer with fault breccia along walls. Seems to be roughly following core axis from 620.0 to end of hole. This vein has py. pyrr. and cpy. in very small amounts mostly occurring as blebs in the brecciated zone on either side of the quartz-calcite stringer. From the attitude of this vein and the interpretation of geophysical surveys, it would appear that N-S faulting has taken place.											
			660' - END OF HOLE											

XERO COPY

DIAMOND DRILL RECORD

PROPERTY Baska Uranium Mines Limited - *HAND TYPED*

LOCATION: LAT. 16 / 00S
 DEP. 39 / 00W

ELEVATION OF COLLAR _____

DATUM _____

DIRECTION AT START: BEARING Due S Ast.
 DIP -55°

LOGGED BY J.A.S. HOR. COMP. _____

PURPOSE OF HOLE _____ VER. COMP. _____

TESTS

Ft.	Dip.	Ast. Bearing	Ft.	Dip.	Ast. Bearing	Core	
						Ft. Received	p.c. Recovery
250'	47 $\frac{1}{2}$ °						

HOLE NUMBER R-103

SHEET NO. 1

SECTION FROM 0 TO 251

STARTED _____

COMPLETED _____

ULTIMATE DEPTH 251

PROPOSED DEPTH _____

DRILLED BY Continental Dia. Drill Co.

HONEY PRINTING SERVICE, TORONTO-4604

Distance		ROCK	DESCRIPTION	Sample No.	Length Ft.	ANALYSIS								
From	To					Au.	Ag.	Pb.	Zn.	Cu.		Ave.		
0	166.0	Casing	Overburden											
166.0	175.0	Tuffs	Bedded, graphitic, with 3 - 5% py. as stringers and blobs throughout. Tiny stringers quartz-calcite at any angle.											
175.0	251.0	Dacite	Negligible shearing or graphite. Occasional tiny stringers of quartz-carbonate at any angle to C.A. Light grey, fine grained, massive rock.											
			251' - END OF HOLE											

[Handwritten Signature]

XERO COPY

XERO COPY

XERO COPY

PROPERTY Baska Uranium Mines Limited - Horns Tuff
 LOCATION: LAT. 24 / 00S
 DEP. 15 / 00W
 ELEVATION OF COLLAR.....
 DATUM.....
 DIRECTION AT START: BEARING Due South Ast.
 DIP. -50°
 LOGGED BY.....HOR. COMP.....
 PURPOSE OF HOLE.....VER. COMP.....

DIAMOND DRILL RECORD

TESTS

Ft.	Dip.	Ast. Bearing	Ft.	Dip.	Ast. Bearing	Core	
						Ft. Received	p.c. Recovery
450'	50°						

HOLE NUMBER R-104
 SHEET NO. 1
 SECTION FROM 0 TO 307
 STARTED.....
 COMPLETED.....
 ULTIMATE DEPTH 452
 PROPOSED DEPTH.....

DRILLED BY Continental Diamond Drill Co.

HONEY PRINTING SERVICE, TORONTO-4604

Distance		ROCK	DESCRIPTION	Sample No.	Length Ft.	ANALYSIS								
From	To					Au.	Ag.	Pb.	Zn.	Cu.			Ave.	
0	188.0	Casing												
188.0	202.0	Andesite	Vuggy, fractured, leached											
202.0	226.0	Andesite	As above but 60 - 70% ground and lost core.											
226.0	228.0	Bedded Tuff	Graphitic, 15 - 20% py. Lination at 80° to G.A.											
228.0	229.0	Lost Core												
229.0	233.0	Andesite	As 188 - 202											
233.0	235.5	Bedded Tuff	Graphitic, 30 - 40% py. as stringers and irregular masses.											
235.5	237.0	Lost Core												
237.0	239.0	Bedded Tuff	As 233 - 235.5											
239.0	266.0	Basalt	Massive basic volcanic rock, probably andesite or basalt flow											
266.0	280.0	Intermediate flows	Chloritized flow breccia, varying amounts (2 - 10%) py. Considerable quartz and interbedded tuffs	5015	2.0	Nil	Nil							
280.0	282.0	Bedded Tuff	Graphitic, small amounts py.											
282.0	307.0	Basic Flow	Basalt (?) massive, fine grained dark grey											

XERO COPY

DIAMOND DRILL RECORD

PROPERTY Baska Uranium Mines Limited
 LOCATION: LAT. 24 / 00S
 DEP. 15 / 00W
 ELEVATION OF COLLAR.....
 DATUM.....
 DIRECTION AT START: BEARING.....
 DIP.....
 LOGGED BY..... HOR. COMP.....
 PURPOSE OF HOLE..... VER. COMP.....

TESTS

Ft.	Dip.	Ast. Bearing	Ft.	Dip.	Ast. Bearing	Core	
						Ft. Received	p.c. Recovery

HOLE NUMBER R-104
 SHEET NO. 2
 SECTION FROM 307 TO 452
 STARTED.....
 COMPLETED.....
 ULTIMATE DEPTH.....
 PROPOSED DEPTH.....

DRILLED BY.....

HONEY PRINTING SERVICE, TORONTO—4604

Distance		ROCK	DESCRIPTION	Sample No.	Length Ft.	ANALYSIS							
From	To					Au.	Ag.	Pb.	Zn.	Cu.		Ave.	
307.0	342.0	Altered Tuff	Fine grained, bedding at 85° - 90° to C.A. 10 - 20% iron f'mn. (both jasper and magnetite) fairly strongly magnetic. Grades into green chloritic tuffs by 317'										
342.0	424.0	Gabbro	Dense uniformly fine grained, with several stringers and patches of quartz-carbonates.										
424.0	426.0	Vein	80% irregular quartz-carbonate area	5014	2.0	Nil	Nil						
426.0	452.0	Gabbro	As 342 - 424, becoming coarser grained toward end of hole										
			452' - END OF HOLE										

[Handwritten Signature]

XERO COPY

XERO COPY

XERO COPY

BASKA URANIUM MINES LTD.

HANNA TWP. PORCUPINE DIST.

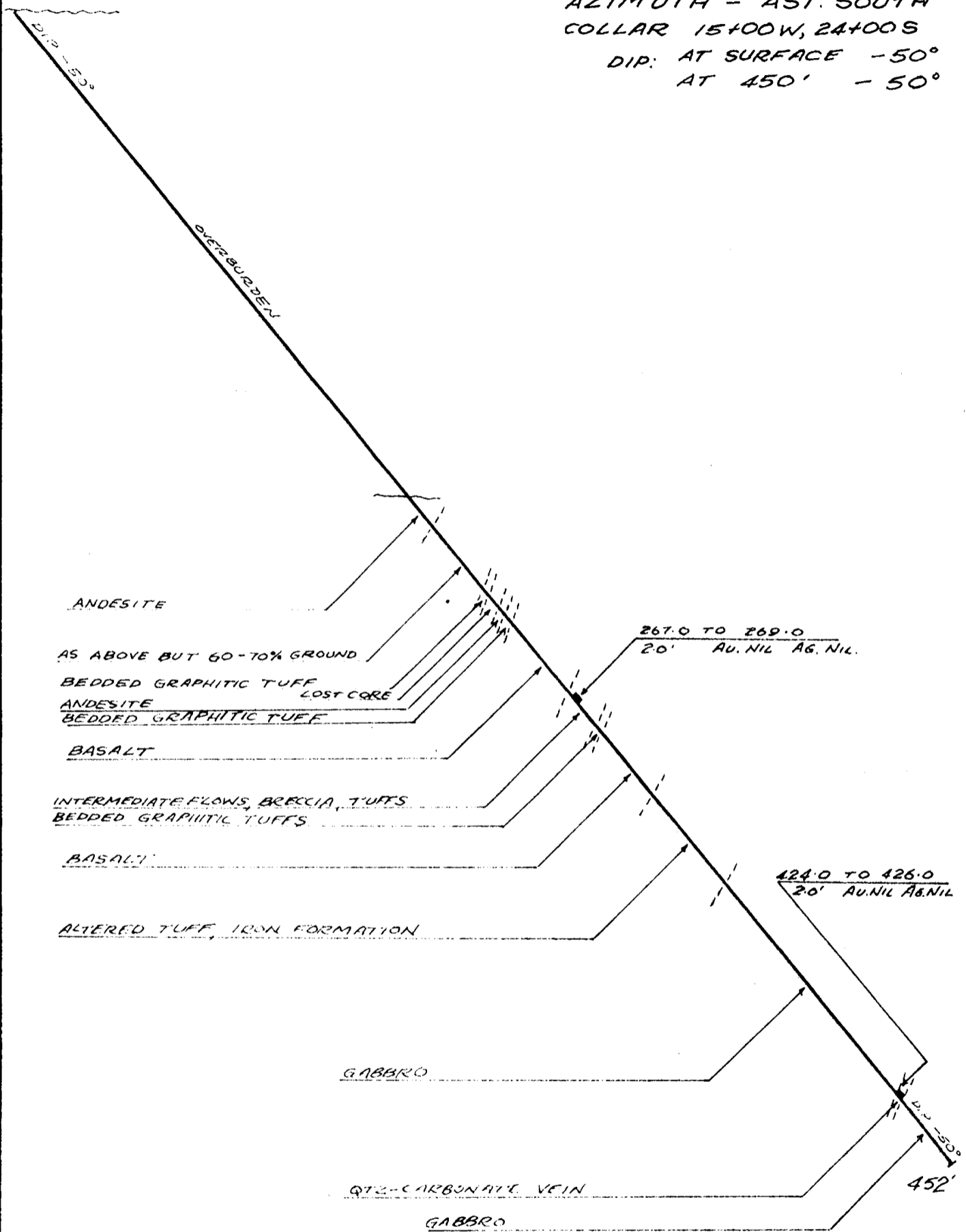
HOLE N° 4 SCALE 1" = 40'

AZIMUTH - AST. SOUTH

COLLAR 15+00W, 24+00S

DIP: AT SURFACE - 50°

AT 450' - 50°



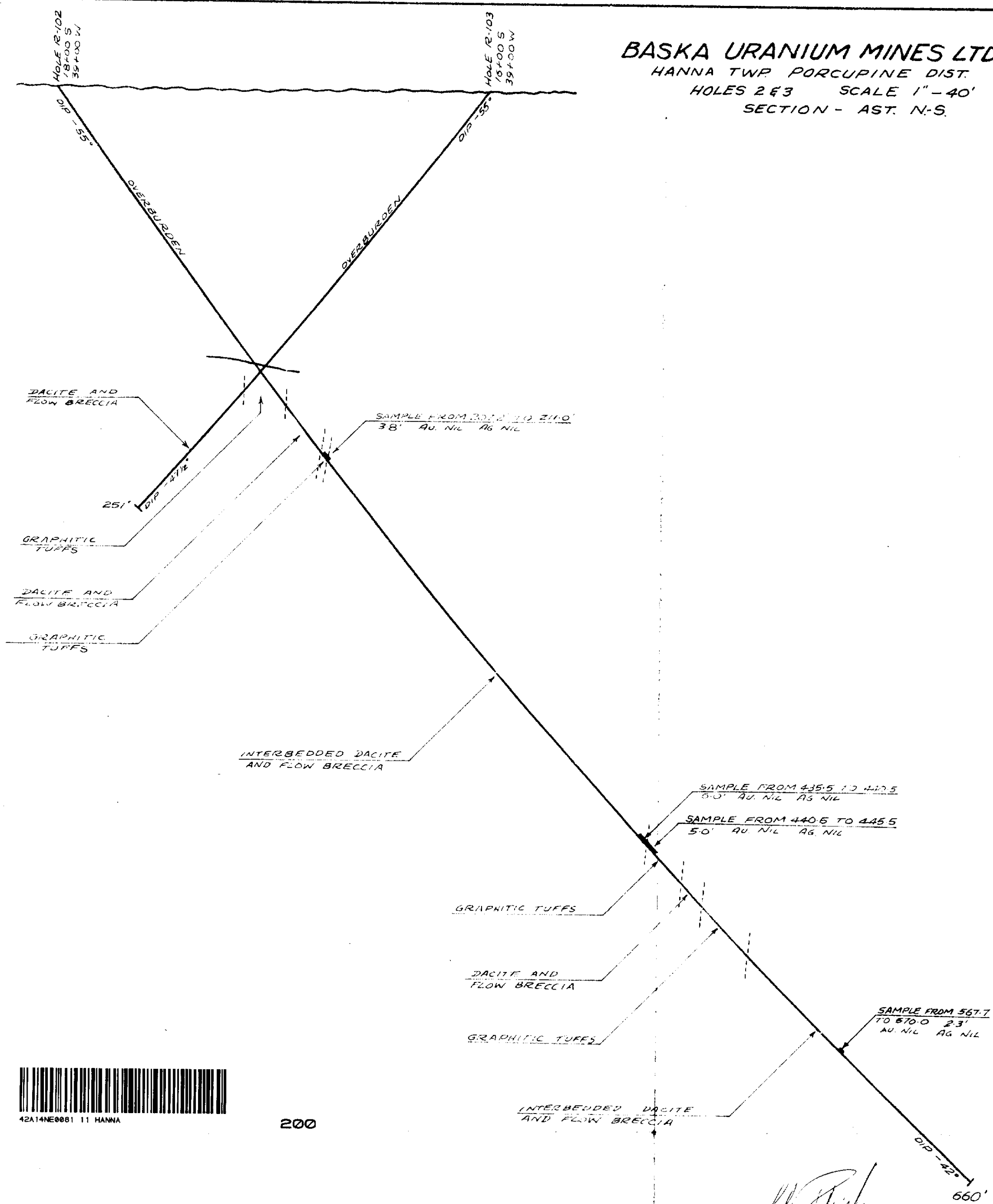
APRIL '65 JAS

BASKA URANIUM MINES LTD.

HANNA TWP PORCUPINE DIST.

HOLES 2 & 3 SCALE 1" = 40'

SECTION - AST. N-S.



42A14NE0081 11 HANNA

200

APRIL 65. 11/15

[Handwritten signature]