

MANN TOWNSHIP REPO



42A14SE0345 12 MANN

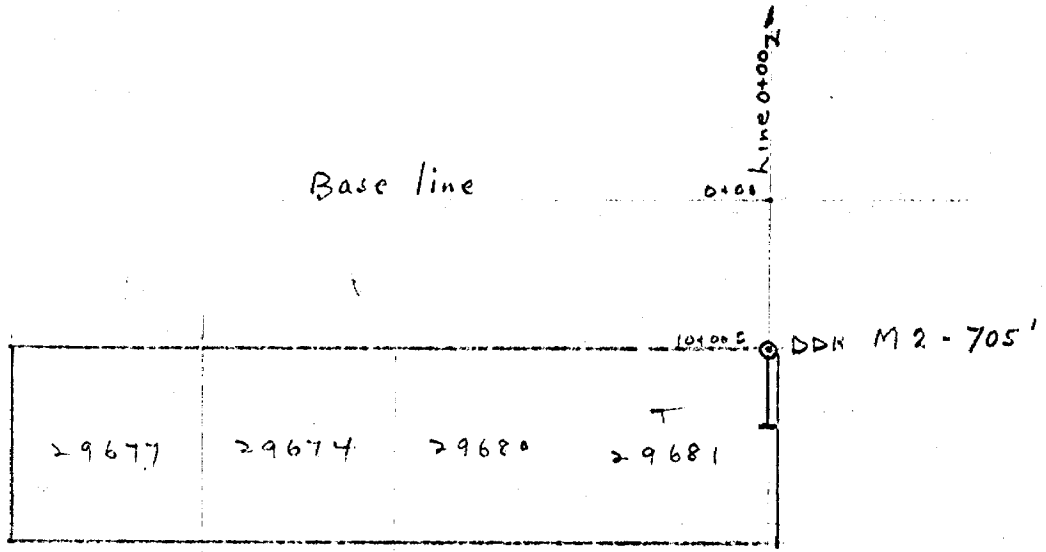
010

#12

This file contains work performed by Can. Johns-Manville
on claims:

T.29681	Hole # M-2	July/51	705'
T.29682	Hole # M-3	July/51	567
	M-6	July/51	420'
T.29686	Hole # M-4	July/51	699
	M-5	July/51	566
T.29670	Hole # M-7	Aug/51	567
	M-8	Aug/51	564
	<hr/>		<hr/>
	7		4088'

2965



Canadian John Manville Co Ltd
 Matheson Out

Plan & location of DDH M2
 Mann Twp

Scale 1" = 1320'

Aug 19/51

7-399

CANADIAN JOHNS-MANVILLE COMPANY, LIMITED

DIAMOND DRILL LOG

HOLE M-2

LOCATION:	MANN TOWNSHIP - ONTARIO.	CLAIM	T29681
	Line 0/00 10/00S	BEARING	Due S.
STARTED:	July 6, 1951	DIP	45 deg.
COMPLETED:	July 12, 1951.		
DEPTH:	705'		

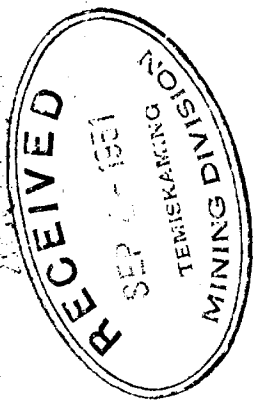
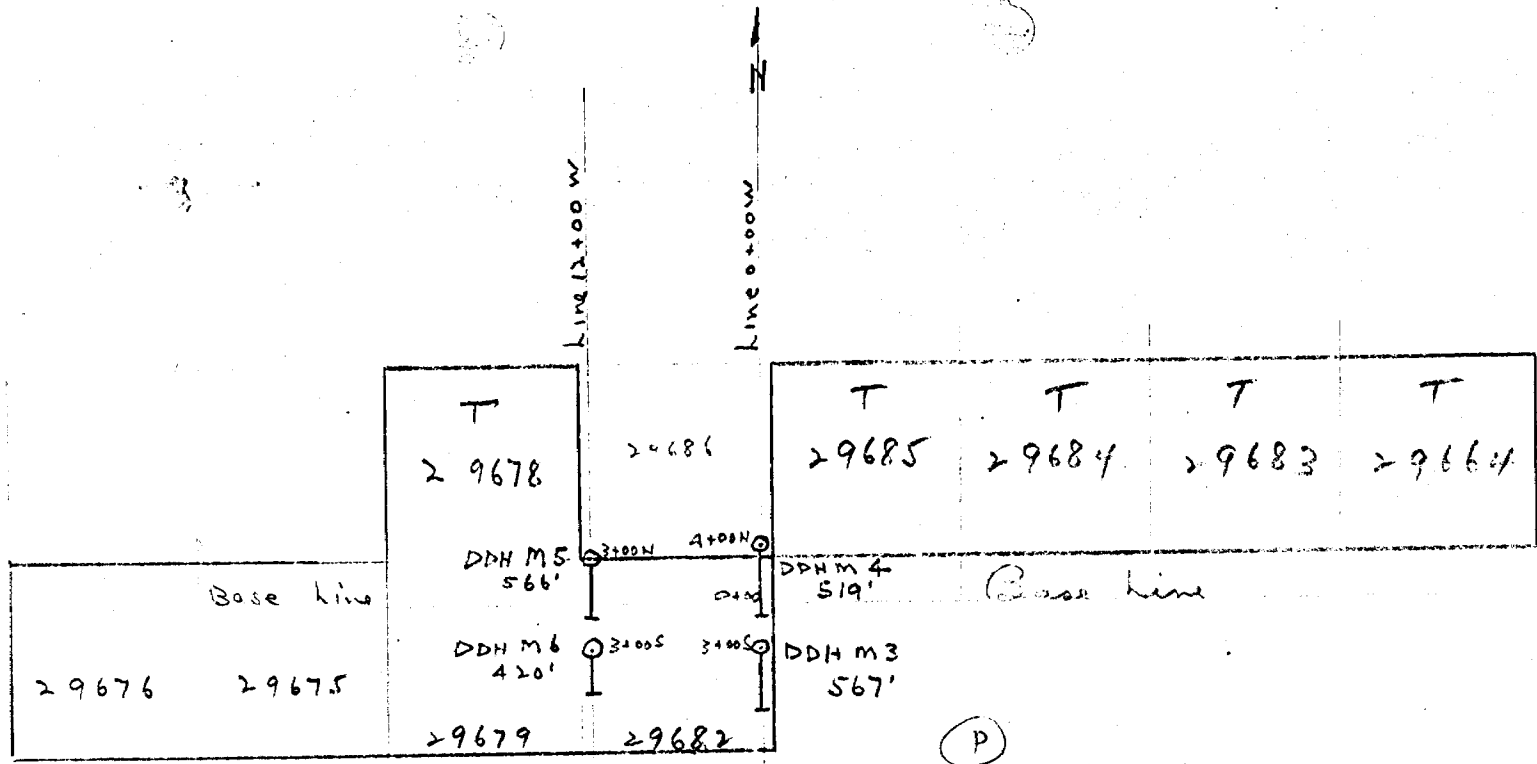
<u>FOOTAGE</u>	<u>ROCK TYPE</u>	<u>DESCRIPTION</u>
0 - 24		Casing.
24 - 705	Serpentinized peridotite.	
24 - 166		Massive & granular, slight picrolite, considerable magnetite. A few 1/16" veins of chrysotile asbestos & thread veins. Pale green & sheared.
166 - 177		A few fractures. Considerable thread veins & several at 1/16"
177 - 217		Dense.
217 - 253		" Considerable magnetite, a few picrolite veinlets. A few thread veins & occasional 1/16" veins of asbestos.
253 - 327		Very massive with some carbonate veinlets & a few thread veins. Fractured with numerous thread veins & a few at 1/16".
327 - 367		From 375-383 Sheared.
367 - 460		" 446-450 Pale grey intrusive.
460 - 548		Dense, massive & granular. A few carbonate veinlets. Occasional thread veins.
548 - 564		Dense & granular. Less serpentinization & magnetite.
564 - 667		From 595-610 Grey, carbonated. Probably Pyroxenite (?)
667 - 705		Dense, coarser grained & massive. Very granular. Less magnetite.

705 End of hole.

Logged by H. L. Garvie.

ASSESSMENT WORK

29682



Canadian John Mansfield Co Ltd
Matheson Ont

Plan & location of DDH'S M3, M4, M5, M6
Mann Twp

Scale 1" = 1320'

Aug 29/51
A.H.

CANADIAN JOHNS-MANVILLE COMPANY, LIMITED

HOLE M-3

DIAMOND DRILL LOG

LOCATION: MANN TOWNSHIP - ONTARIO
Line 0/00 3/00S
STARTED: July 12, 1951
COMPLETED: July 17, 1951
DEPTH: 567'

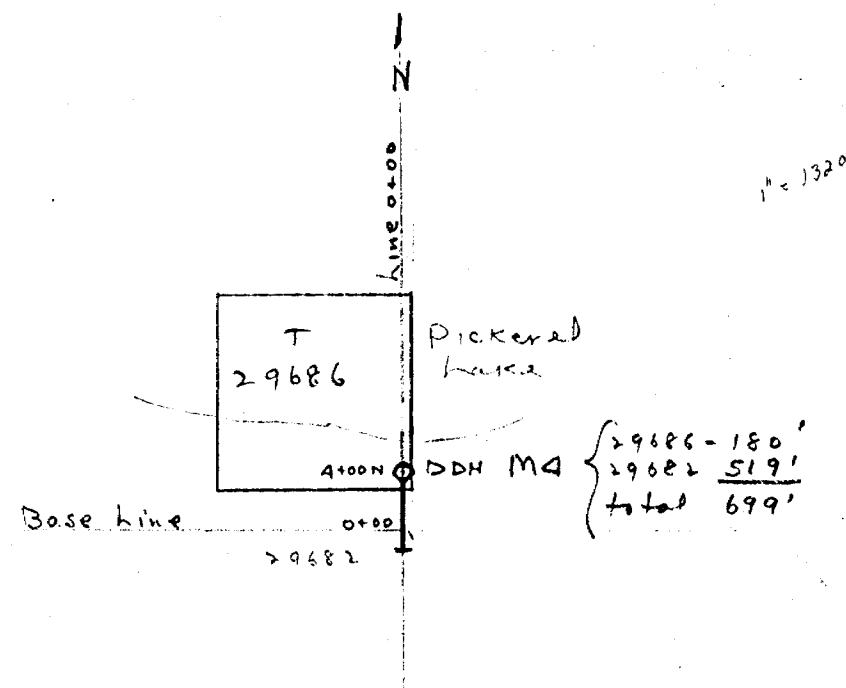
CLAIM: T29682
BEARING: Due S.
DIP: 45 deg.

<u>FOOTAGE</u>	<u>ROCK TYPE</u>	<u>DESCRIPTION</u>
0 - 25		Casing.
25 - 49	Serpentinized peridotite	Fine grained, fractured, scant magnetite. Occasional carbonate stringers.
49 - 59	Acid dyke	Fine grained & dense.
59 - 316	Serpentinized peridotite	
	From	59-70 Fractured.
	"	59-171 Medium grained & granular, poorly serpentinized with several grey phases. Some magnetite.
	"	100-171 Fractured with occasional shears with carbonate veinlets.
	"	171-316 Granular & dense, poorly serpentinized with several grey phases. Narrow fractures.
	"	295-300 Sheared with carbonate veinlets.
316-465	Pyroxenite	Dense, grey with disseminated magnetite.
	"	423-428 Chloritic shear zone.
465-509	Serpentinized peridotite	Dense & poorly serpentinized.
509-544	Grey dyke.	
	From	509-520 Sheared & talcose
	"	520-544 Carbonated & dense.
544-567	Pyroxenite	Dense & massive.
567	End of hole.	

Logged by H. L. Garvie

ASSESSMENT WORK

29686



copy log
Mann Twp

ASSESSMENT WORK

Canadian John Mannville Co Ltd
Matheson Creek

Plan. location of DDH M4
Mann Twp

Scale 1" = 1320'

Aug 29/51
A.B.

T-287

CANADIAN JOHNS-MANVILLE COMPANY LIMITED

HOLE M-4

DIAMOND DRILL LOG

LOCATION: MANN TOWNSHIP - ONTARIO
Line 0/00 4/00N
STARTED: July 18, 1951
COMPLETED: July 24, 1951
DEPTH: 699'

CLAIM: T29686
BEARING: Due S.
DIP: 45 deg.

<u>FOOTAGE</u>	<u>ROCK TYPE</u>	<u>DESCRIPTION</u>
0 - 37		Casing
37 - 164	Serpentinized dunite	From 37-129 Dense & green, granular, a few fractures, considerable magnetite in seams. Occasional 1/16" veins of chrysotile asbestos.
		" 129-164 Massive with occasional thread veins. Highly altered & silicified. Pale green alteration of crystals near contact.
164 - 179	Pyroxenite dyke	Dense, green, considerable magnetite, talcose. Slip rock in seams. Occasional 1/16" veins of asbestos & numerous thread veins.
179 - 290	Serpentinized dunite	From 247-248 Gouge. 250-275 Very massive 275-290 Fractured
290 - 628	Serpentinized peridotite	Dark & fine grained. Fractures filled with carbonate & tiny thread veins of fibre from 290-340.
		From 340-370 Coarser & granular. Numerous thread veins & occasional 1/16" veins of fibre.
370 - 440		Generally massive, coarse grained & granular. Numerous fibre veins to 1/8". Considerable magnetite. Fibre veins poorly developed. Numerous fibre veins to 1/16".
440 - 500		Occasional 1/16" & thread veins.
500 - 540		Granular, more massive, less fracturing.
500 - 628		Some 1/32" & 1/16" veins of fibre.
628 - 643	Pyroxenite.	
643 - 699	Volcanics (?)	Dark green. Fractures filled with carbonate.
699	End of hole.	

Logged by H. L. Garvie

LABORATORY WORK

T-397

CANADIAN JOHNS-MANVILLE COMPANY, LIMITED

HOLE M-5

DIAMOND DRILL LOG

LOCATION: MANN TOWNSHIP - ONTARIO
Line 12/00 W 3/00 N
STARTED: July 25, 1951
COMPLETED: July 30, 1951
DEPTH: 566'

CLAIM: T29686
BEARING: Due S.
DIP: 45 deg.

FOOTAGE

ROCK TYPE

DESCRIPTION

0 - 33		Casing
33 - 135	Pyroxenite.	Fine to medium grained, grey phases. Occasional slip rock.
135 - 503	Serpentinized peridotite	
	From	135-205 Pale to dark green narrow dunite sections, considerable magnetite in seams. Numerous veins of chrysotile asbestos up to 1/8".
		205-230 Fairly massive, some magnetite & thread veins.
		230-260 Fractured & sheared zone, magnetite. A few seams of picrolite & slip rock. Occasional gouge.
		260-278 Slightly sheared, scant magnetite. Occasional 1/16" fibre veins & thread veins.
		278-325 Fairly massive. Considerable variation in grain size. Many thread veins.
		325-370 Coarser grained & granular. Several fibre veins @ 1/16" & thread veins.
		370-430 Medium grained & granular. Several 1/16" veins & some 1/8" veins. Massive.
		430-460 Pale green & granular. Several veins of fibre @ 1/16" & thread veins. Several picrolite veinlets.
		460-470 Dark green & granular, some magnetite. Several fibre veins to 1/8" & thread veins.
		470-503 Same with occasional 1/16" fibre veins & some picrolite.
503 - 530	Grey intrusive	Carbonate veining at contact.
530 - 566	Pyroxenite	As 33-135 Grey, massive.
566	End of hole.	

Logged by H. L. Garvie

ASSESSMENT WORK

CANADIAN JOHNS-MAIVILLE COMPANY, LIMITED

HOLE M-6

DIAMOND DRILL LOG

Claim T29682

LOCATION: Line 12,00 W, 300' S
STARTED: July 31, 1951
COMPLETED: Aug. 4, 1951
DEPTH: 420'

BEARING: Due South
DIP: 45 deg.
Mann Township, Ont.

FOOTAGE

ROCK TYPE

DESCRIPTION

0- 26		Casing
26-377	Peridotite	Poorly serpentized.
		From 26-145 Grey-green, granular, a few fractures, disseminated magnetite & brown mineral (?)
		" 26-50 Occasion thread veins of asbestos.
		" 145-300 Dark grey-green, coarser grained and granular, disseminated magnetite & brown mineral.
		" 300-377 Grey-green
377-404	Grey intrusive	" 377-387 Sheared, talcose & chloritic.
		" 387-397 Fine grained, dense with fine disseminated pyrrhotite.
		" 397-399 Pyroxenite inclusion.
		" 399-400 Disseminated arsenopyrite adjacent to carbonate stringers.
		" 399-404 Dense, grey & carbonated. Massive.
404-420	Pyroxenite	

Logged by H. L. Garvie

7-377

CANADIAN JOHNS-MANVILLE COMPANY, LIMITED

DIAMOND DRILL LOG

HOLE M-7

MANH TOWNSHIP, ONT.

Claim T29670

LOCATION: Line 36⁰⁰ W, 7⁰⁰ N
 STARTED: Aug. 4, 1951
 COMPLETED: Aug. 9, 1951
 DEPTH: 567'

BEARING: Due South
 DIP: 45 deg.

FOOTAGE

ROCK TYPE

DESCRIPTION

0- 37		Casing
37-352	Peridotite, serpentized	
	From	37-200 Dark green, granular, a few fractures with picrolite veinlets, Disseminated magnetite. Numerous veins of chrysotile asbestos up to 1/8".
	"	110-120 Becoming coarser grained with seams of magnetite.
	"	150-160 Some carbonate veinlets.
	"	180-190 Finer grained.
	"	190-200 Sheared parallel to core. Picrolite veining.
	"	200-250 Dark green, granular & massive.
	"	250-310 " " to grey, very massive.
	"	310-352 Many fractures filled with carbonate. Considerable carbonate veining, disseminated brown mineral (?) & magnetite. At 303 gauge with graphitic slickensides developed.
352-372	Grey-green carbonated shear zone.	
372-417	Peridotite, serpentized	
	From	372-394 Grey green & granular, considerable carbonate veining.
	"	394-417 Fine grained, dark green & fractured. Carbonated, fine grained & dense. Considerable magnetite.
417-424	Light grey intrusive	
424-567	Peridotite, serpentized	
	From	424-449 Dark green & fractured, some carbonate veining & a few thread veins of fibre.
	"	449-476 Much carbonate veining & injection material. A few thread veins of fibre
	"	476-567 Dark green, a few fractures filled with carbonate & a few thread veins of fibre.
	"	521-543 Numerous tiny thread veins.

Logged by H. L. Garvie

ASSESSMENT WORK

T-399

NO PERIDOTITE
OR FIBRE

CANADIAN JOHNS-MANVILLE COMPANY, LIMITED

DIAMOND DRILL LOG

HOLE M-8

MANN TOWNSHIP, ONT.

Claim T29670

LOCATION: Line 36/00 W, 9/00 N
STARTED: Aug. 10, 1951
COMPLETED: Aug. 14, 1951
DEPTH: 564'

BEARING: Due North
DIP: 45 deg.

<u>FOOTAGE</u>	<u>ROCK TYPE</u>	<u>DESCRIPTION</u>
0-101		Casing
101-564	Volcanics	From 101-262 Highly carbonated, sheared, grey & altered with calcite stringers.
		At 180 2" felsite dykelet.
		At 237 6" " " soft & highly altered
		At 247 6" " " " " "
		At 248 1" barren white quartz stringer
		" 262-272 Medium grey amygdaloidal andesite with scant disseminated pyrite.
		" 272-505 Sheared & carbonated amygdaloidal volcanics. Very scant calcite veining & occasional quartz injection material.
		At 505 Silicification with scant pyrite & chalcopyrite.
		" 505-564 Darker grey, slightly silicified & brecciated zones with scant pyrite.

Logged by H. L. Garvie

EXPLORATION WORK