

63.5651



42A14SE8611 63.5651 DUFF

010

OP 89-244

L. Hill  
Mann Township Property

DIAMOND EXPLORATION AND PLATINUM SHOWING

MINISTRY OF NORTHERN  
DEVELOPMENT & MINES  
RECEIVED

JAN 30 1990

RESIDENT GEOLOGIST  
OFFICE, TIMMINS

L.E.Hill,  
122 Helen Ave.,  
South Porcupine, Ontario  
PON 1H0

Jan. 27, 1990

L.E.Hill,  
122 Helen Ave.  
P.O. Box 1022,  
South Porcupine,  
Ontario  
PON 1H0

OPAP/OMIP PROGRAMS  
INCENTIVES OFFICE  
MNDM,  
3rd Floor, 880 Bay St.,  
Toronto, Ontario  
M5S 1Z8

Sir:

Access to the property is two Miles west of Tunis Ontario, via Hwy. 11, you turn left on newmarket township Concession road 5& 6, you go due west on old Hwy 11 for 3 miles and then you keep on going due west 7 miles on a timber access road which is a good gravel road, this road takes you to the steel bridge over fredrickhouse river and beyond to Duff Township and Reaume Township. The area is pretty well cut out by timber companies and everywhere it has been replanted.

I have been working on my 12 claims that I staked in 1986. I go there in the middle of May and I stay out there all summer to around the middle of Nov. and I go to south Porcupine to buy supplies once a week.

I have a 21 foot Golden Falcon for my living quarters. I have to haul water from home also.

Last summer I did a lot of panning, and Gold Vac Sluice Box work as indicated on the map attached. The map is a tracing of an airphoto so it is very accurate.

I must start to say that "panning site" does not mean only one pan of gravel, where the most heavy minerals are found "panning site" might involve 3 to 6 pans in different spots as long as you keep recovering heavy minerals (CHROME DIOPSIDE, CHROMITE, PYROPE GARNET, PURPLE GARNETS, ROSE COLOURED GARNETS, ZIRCONS, MAGNETITE ETC.)

To give you an example on panning

1. Dig down into gravel 1' to 2' to get about a 2 lb. sample from the bottom of hole dug.
2. Then you start washing the gravels and discarding the bigger stones, washing and cleaning out sticks and shells til you end up with about a small tea saucer of fines. If you see lots of red garnets it is usually a very interesting panned sample. Then I take a piece of heavy good quality paper towel and make a square out of it about 4"x5". I tip the pan onto it and wash the fines onto the square. and put a mark on it to identify it. I also look at the sample on the wet paper with my hand lens. Take it to my camp. Dry it in a frying pan paper and all. Then I dump it on a small flat saucer & view it with my microscope which is 15X. This work I usually do in the evenings or on some rainy days. I also have looked at some samples with my ultra violet lamp at home in the fall and winter. The best samples are found where you know bedrock is not too deep (1' to 3)'. The purple and rose coloured garnets look very interesting as they are broken pieces and do not appear to be abraded so are the chromite, zircons, and magnetite.
3. To my knowledge visual I.D. is still the best for C mineral exploration, no assays of course other tests are possible if diamonds are suspected.

#### USE OF THE GOLD VAC SLUICE BOX

1. The type I have is mounted on 2 trucktubes inflated to give proper level to it. I was using it where there was maybe 4' to 6' of gravels. It sure can suck up the gravels. It really sucks up too much as it has a powerful suction pump, it does not take lo fill the riffles in the sluice box. As C stones are not very heavy (3.5 specific gravity they could be suspended in the gravels just a foot or two down. I managed to suck gravel up from about two feet down still high up from bedrock possibly 4 feet or more down.

Recovered on the East side of Wanatango Falls I got very fine magnetite crystals, fine zircons, and highly abraded garnets of a rose colour and many absolutely pure balls of quartz about 1 to 2 mm in diameter. They look unabraded. These were identified as quartz balls. Pretty well the same results on the other two sites on the East side of the river and negative results on the one site on the West side of the river.

But panning on the Island below the the falls gave a good show of the three types of garnets, zircons, magnetite etc.

PROSPECTING AND PANNING SOUTH OF THE BRIDGE AND NORTH OF THE BRIDGE.

N. of the bridge and south of the bridge has a good map of outcrops made by Mr. Dave Good (O.G.S. 1987)  
The two panning spots near the bridge - pretty well all the heavy minerals are abraded a little.  
Panning around the Platinum showing has to be done again as some very fine white specks were found.

Let me point out that working alone you have to be very careful. The river is very fast and rapids rough, maybe next summer I can hire a helper.

The days left out in Oct. and Nov. of the report were used in cutting a right of way from my camp - 1 bridge was completed, 1 bridge half finished and one more bridge built to get over a small creek to get to two sulphide showings to do my assessment work.

The heavy minerals found in the gravels, the platinum showing and the results of the last air magnetometer survey by the Ministry of Northern Development and Mines warranted the enlarging of the claim group.  
I am presently trying to option the group.

Sincerely yours,

Len E. Hill  
Jan. 29/90

*L.E. Hill*

①  
My first 12 claims - 8 are in Mann Twp. which is a surveyed township and 4 claims in Duff Twp. which is a unsurveyed township.

Mann Township claims - recorded August 1, 1986

944940 & 944944 are in the S 1/2 of N 1/2 of L12C5

944941 & 944945 are in the N 1/2 of S 1/2 of L12C5

944942 & 944946 are in the S 1/2 of S 1/2 of L12C5

944945 & 944947 are in the N 1/2 of N 1/2 of L12C4

DUFF TOWNSHIP claims - recorded August 1, 1986

944948 tie onto 944940 Mann Twp.

944949 tie onto 944941 Mann Twp.

944950 tie onto 944942 Mann Twp.

944951 tie onto 944943 Mann Twp.

added on 12 claims Mann Twp. recorded June 15, 1989

1114721, 1114723, 1114722, 1114724 - are in N 1/2 L 11C4

1114725, 1114726 are in the W 1/2 of N 1/2 of L10C4

1114719, 1114720 are 1/2 claims of S 1/2 of S 1/2 of N 1/2 L12C4

1114731, 1114732, 1114733, 1114734 N 1/2 L 12C3

added on 5 claims Duff Twp. recorded July 13, 1989

1114727 tie onto 1/2 claim 1114720 Mann Twp.

1114728 tie onto VET Lot S 1/2 L12C4 Mann Twp.

1114729 tie onto VET Lot S 1/2 L12C4 Mann Twp.

1114730 tie onto claim 1114731 Mann Twp.

1114735 tie onto claim 1114734 Mann Twp.

added on 1 River claim recorded August 1, 1989

1114736

Total claims staked by myself = 12 + 18 + 30

2

MANN TOWNSHIP

18 claims staked by claim stakers using my licence and tags recorded  
September 21, 1989

1125821, 1125822, 1125825, 1125826 are in S 1/2 L11C4

1125829, 1125830, 1125833, 1125834 are in N 1/2 L11C4

1125823 NW 1/4 of S 1/2 L10C4

1125827, 1125828 are in S 1/2 of S 1/2 L10C4

1125831, 1125832, 1125835, 1125836 are in N 1/2 L10C3

1125837 NE 1/4 of S 1/2 L10C3

1125934 - 1125937 are in S 1/2 of S 1/2 L7C4

3

REAUME & DUFF TOWNSHIPS - UNSURVEYED

Reaume Township - Matti Kangas

4 claims - 1116294, 1116295, 1116296, 1116297

Duff Twp. - 8 claims

1116286, 1116287, 1116288, 1116289, 1116290, 1116291, 1116292, 1116293

Duff Twp. - staked by L. Salo, staking outfit

1115429 to 1115466 incl. = 38 claims

1115389 to 1115416 incl. = 28 claims

1115422 to 1115426 incl. = 5 claims

1116627 to 1115634 incl. = 8 claims

1115419, 1115420 = 2 claims

1113943 to 1113950 incl. = 8 claims

Total claims staked in Reaume & Duff Townships

4 - Reaume  
8 - Duff  
38 - Duff  
28 - Duff  
5 - Duff  
8 - Duff  
2 - Duff  
8 - Duff  
101 Total

*L. E. Hill*  
*Jan 29 / 1990*

# SHALLOW LEVEL ULTRAMAFIC SILLS

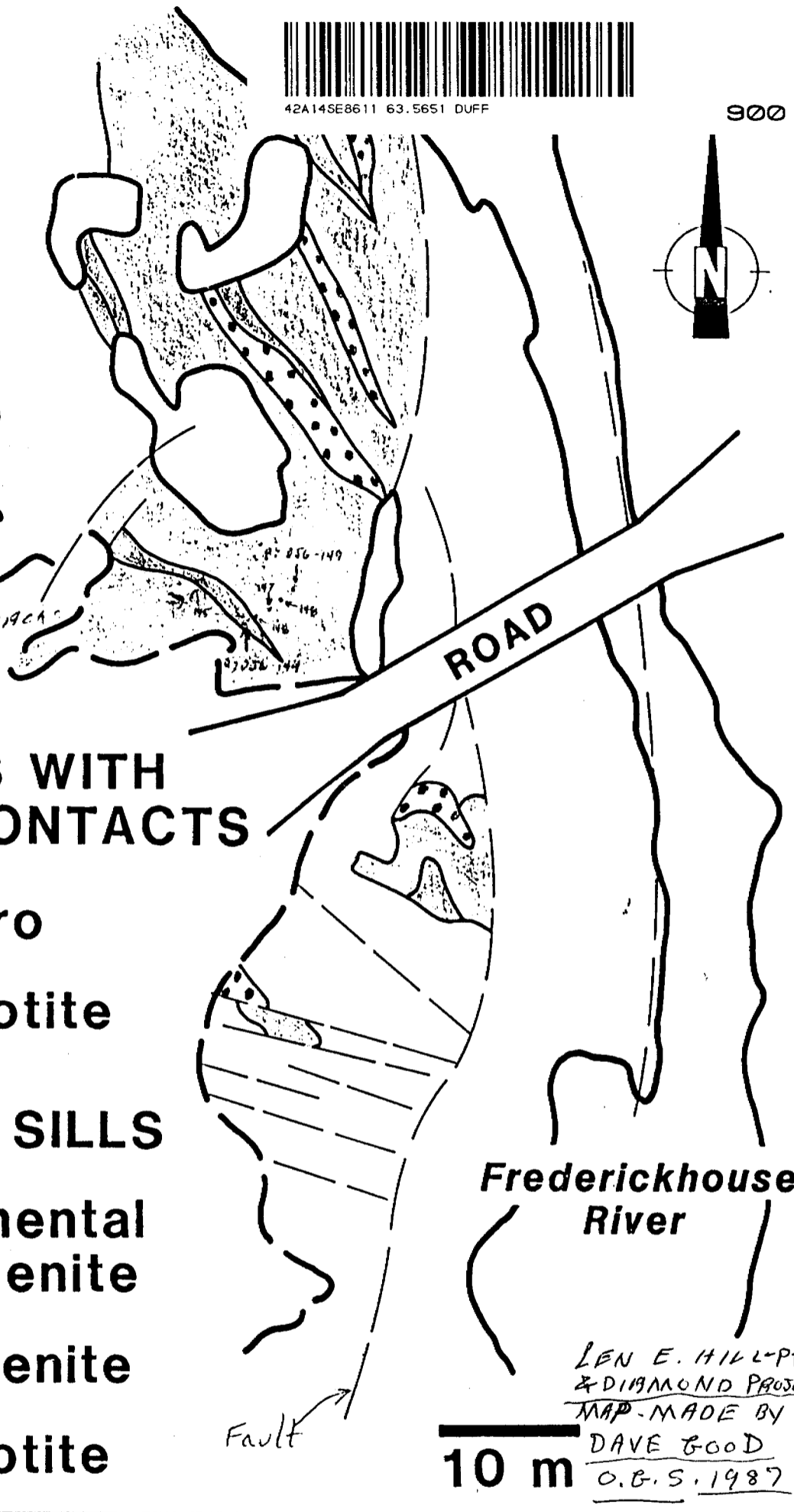
LEGEND



42A14SE8611 63.5651 DUFF

900

- ⊕ PANNING
- NR - NEGATIVE RESULTS
- CD - CHROME DIOPSIDE
- PR - PYROPE GARNET
- CH - CHROMITE
- Z - ZIRCONS
- M - MAGNETITE
- - SPHERICAL MAGNETITE
- - OLIVINE
- EDGE OF →
- O/C
- GP - PURPLE COLOUR
- GR - ROSE COLOUR
- PR, CD, CH, Z, M, ●, ○
- GP, PR, CD, CH, Z, M, ●, ○, GR
- PT. - SHOWING
- PAN & GRAVELS FROM CRACKS ON BED ROCK.
- 2 PANS - N.R.?



## INTRUSIONS WITH FAULTED CONTACTS

- Gabbro
- Peridotite

## REPETITIVE SILLS

- Fragmental Pyroxenite
- Pyroxenite
- Peridotite

Frederickhouse River

LEN E. HILL-PT.  
& DIAMOND PROJECT  
MAP - MADE BY  
DAVE GOOD  
O.B.S. 1987

10 m

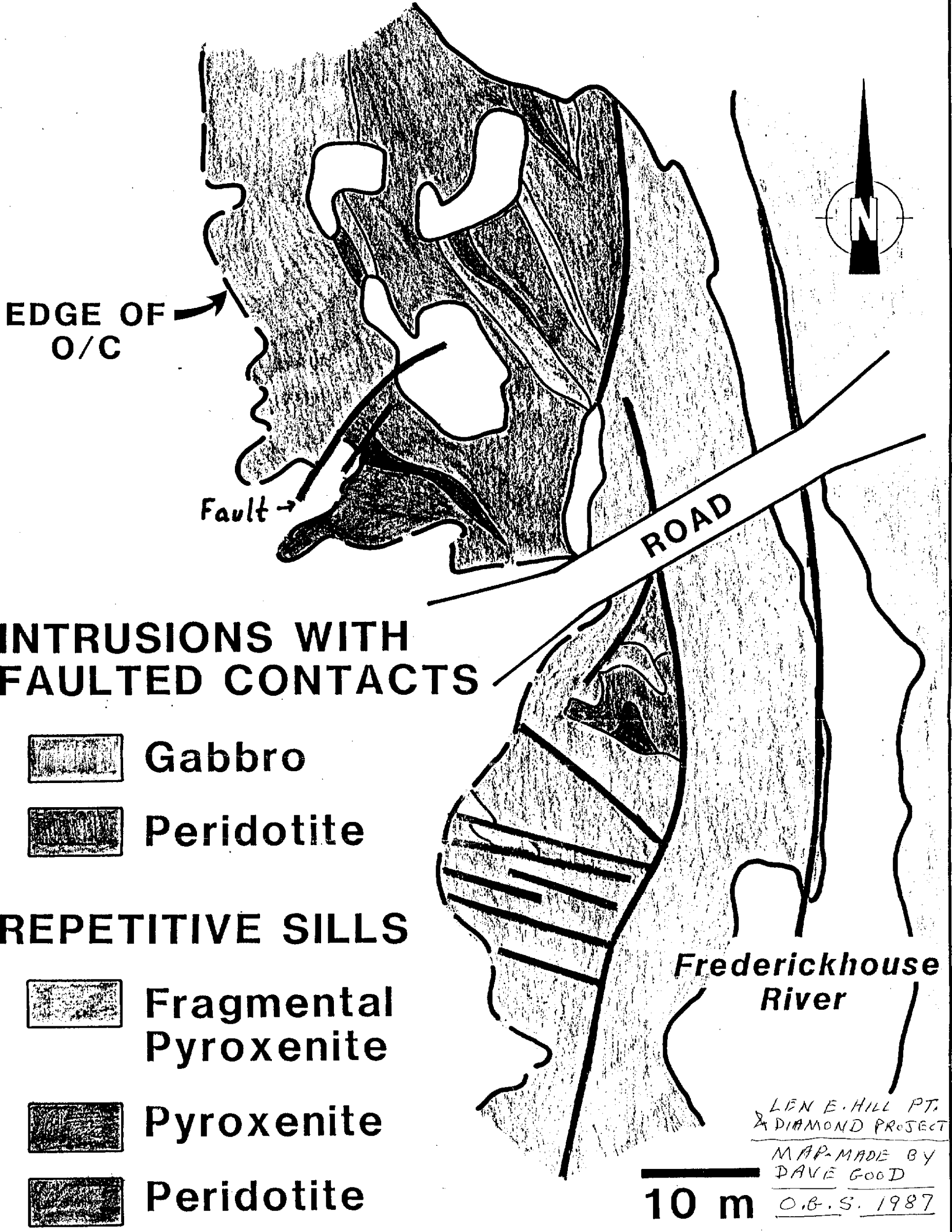
Geology by Dave Good } Ontario Geological Survey 1987  
Benjan Silver }

Len: The geology on this figure has been oversimplified. A more detailed map will be released with the report. You can reference a report in last year's Summary of Field Work: O.S. Good (1987) Summary of Field Work and other Activities 1987, by the Ontario Geological Survey. Vol 137, page 273.

Note: since this report was written, I have found justification in the literature for the PR mineralization indicated on the completion map, so please disregard the last paragraph of the section on the Man Township area.



# SHALLOW LEVEL ULTRAMAFIC SILLS



DP 89-244 63.5651



42A14SE8611 63.5651 DUFF

FREDERICK HOUSE RIVER

NORTH

10 miles to Hwy 11 FROM BAIDEE

944948  
CLAY &  
FINE SAND

944944

944940

THREE RAPIDS

BRIDGE  
944945

944949

944941

944942

944946

944950

OLD TIMBER  
HALL ROAD

LEGEND

- 5- DIABASE DIKES
- 4- SEDIMENTS
- 3- GABBRO
- 2- HYPERSTHENE  
PYROXENITE
- 1- PERIDOTITE

CONG. IV

944951

944943

944947

1114721

1114723

1114725

WANATANGO  
FALLS

TRAIL

PICKEREL  
LAKE

1114727

PORTAGE

1114719

1114722

1114724

1114726

1114728

MANN TWP.

PATENTED  
ROUND

1125821

1125822

1125823

1114729

RIVER  
CLAIM

POOL GRAVELS  
ON SHORELINE  
1114736  
POOL GRAVELS  
ON SHORELINE  
1114736

1125825

1125826

1125827

1125828

1114730

1114731

1114732

1125829

1125830

1125831

1125832

1114735

1114734

CLAY BANKS  
CLAY BANKS

1125833

1125834

1125835

1125836

LOT 1

LOT 12

63.5651  
OP 89-244  
LOT 11

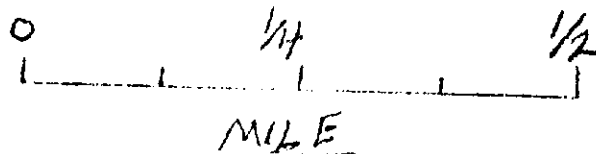
LOT 10

1125837

CONG. III



42A14SE8611 63.5651 DUFF

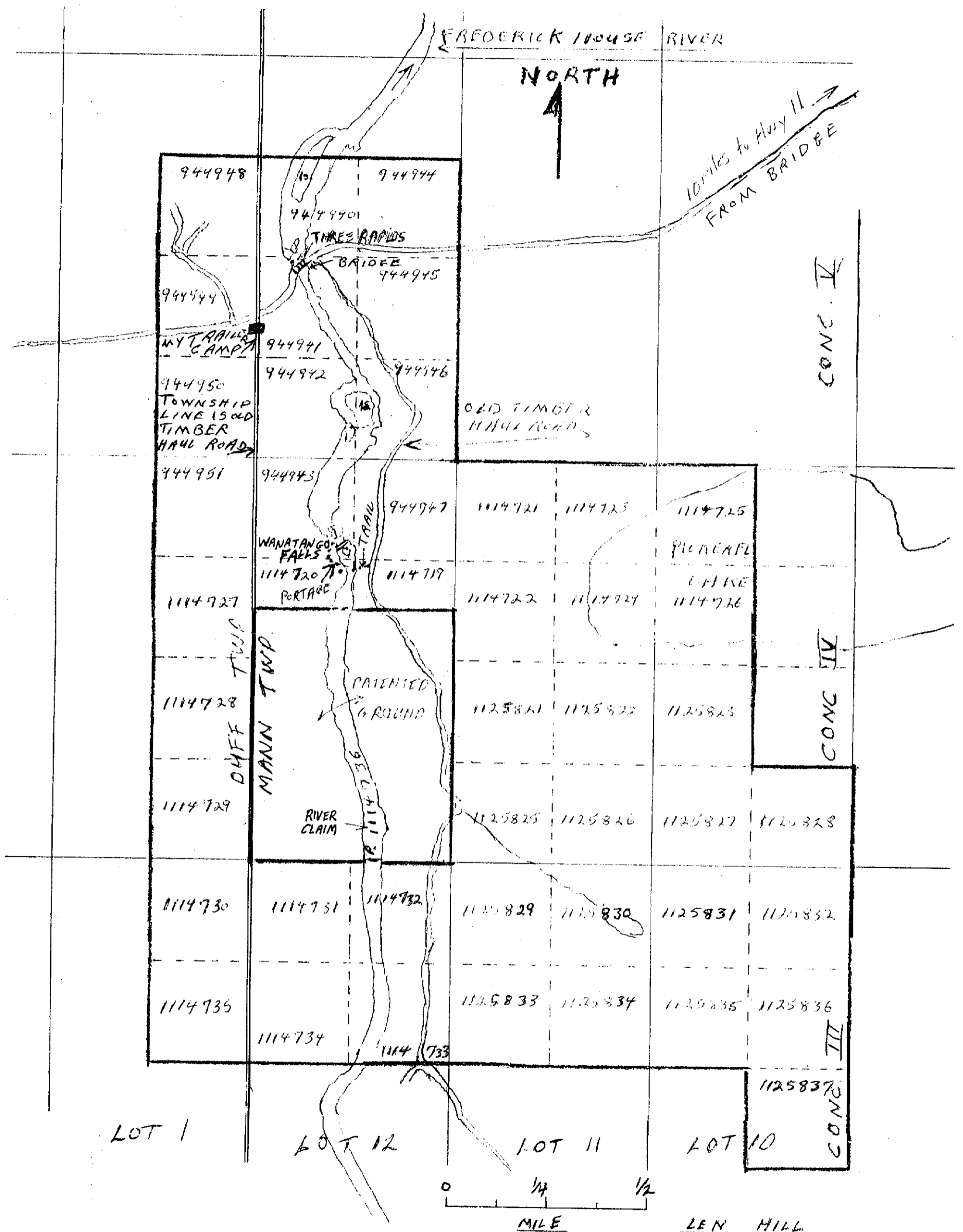


JANUARY 1990  
GEOLOGY

LEN HILL

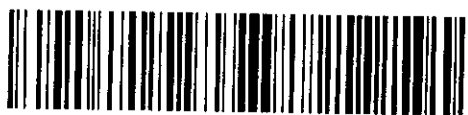
PROJECT - MANN TWP. PROJECT





LEN HILL  
 MANN TWP. PROPERTY  
 MANN TWP.  
 PORCUPINE MINING DIVISION  
 JANUARY 1990

OP 89-244  
 63.5651



42A14SE8611 63.5651 DUFF