



42A14SW0036 10 CRAWFORD

010

Diamond Drilling

Township of CRAWFORD

Report No: 10

Work performed by: Keevil Mining Group

Claim No	Hole No	Footage	Date	Note
P 69957	T65-28	400.0'	July/65	(1)

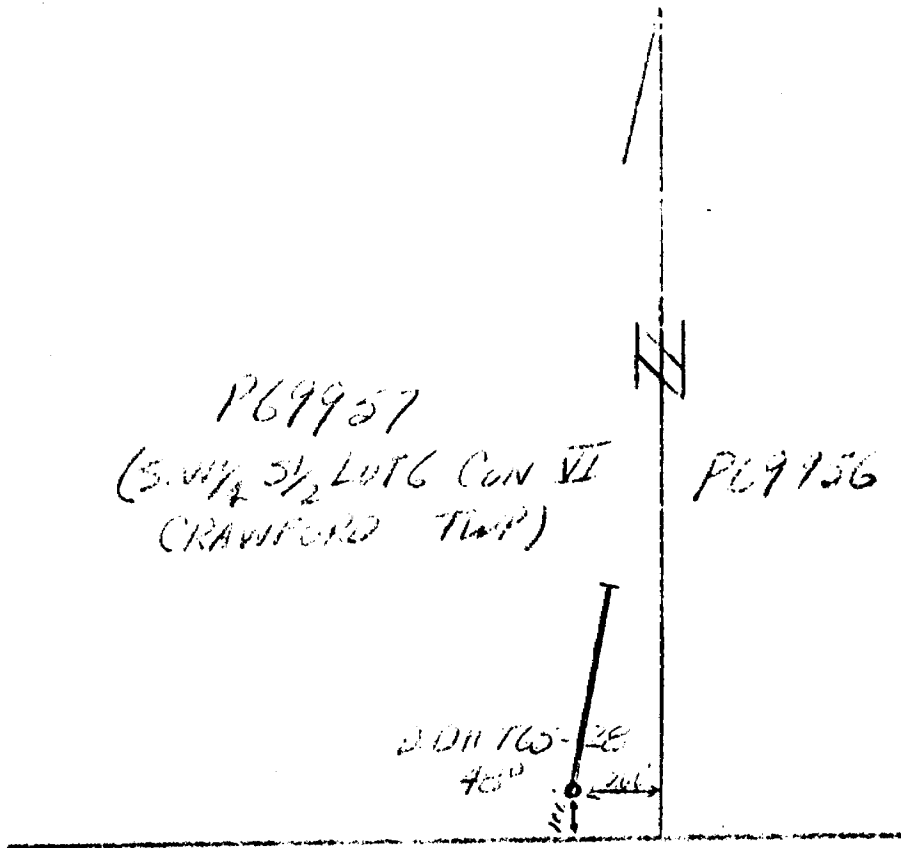
Notes: (1) 2 Location maps and cross section added to file Jan./89.

1-10

P69957
(S. 1/4 3 1/2 LOT 6 CON VI
CRAWFORD TRAP)

P69956

J.D.H. T65-28
40°



DIAMOND DRILL RECORD

1-10

KEEVIL MINING GROUP LTD. - TIMMINS AREA
PROPERTY PROPERTY 235 - CRAWFORD TOWNSHIP **HOLE NO.** T65-28

SHEET NUMBER 1 SECTION FROM _____ TO _____ STARTED July 21, 1965
 LATITUDE 1 / 00N DATUM _____ COMPLETED July 26, 1965
 DEPARTURE 11 / 30E BEARING N 15° E ULTIMATE DEPTH 400.0 ft.
 ELEVATION _____ DIP 48° PROPOSED DEPTH _____

DEPTH FEET	FORMATION	SAMPLE NO.	WIDTH OF SAMPLE	GOLD - g	SILVER - g	ZINC - g	NICKEL - g
0.0 - 60.0	OVERBURDEN			Copper	Silver	Zinc	Nickel
60.0 - 289.0	ANDESITE - Hard, medium grey, fine-grained massive flow. Pillow rims in places. The last 10 feet is a flow to fragmental.						
289.0 - 297.0	SLATE - Granitic. Regularly seared at 80° to 35° to the core axis. Quartz carbonate stringers and veinlets throughout. 10% pyrrhotite in seams and patches. 5% pyrite. Thinly disseminated chalcopyrite. Minor sphalerite.						
297.0 - 298.0	ANDESITE TUFF - Some slate. Some pyrite and pyrrhotite.						
298.0 - 299.0	QUARTZ CARBONATE VEIN - Inclusions of slate with pyrrhotite, pyrite, chalcopyrite and sphalerite.						
	289.0 - 299.0	5927	10.0	0.10	0.06	0.14	Nil
299.0 - 400.0	ANDESITE - 299.0 - 319.0 - coarse, grey green, gabbroic, massive. Scattered white to blue rounded quartz and quartz carbonate amygdules or phenocrysts.						

N.M.P., TORONTO - STOCK FORM NO. 501 REV. 12/51

DRILLED BY Continental Drilling Co. Ltd.

SIGNED

J. D. McLeod P. Eng.

DIAMOND DRILL RECORD

PROPERTY _____

HOLE NO. T05-48

SHEET NUMBER 2

SECTION FROM _____ TO _____

STARTED _____

LATITUDE _____

DATUM _____

COMPLETED _____

DEPARTURE _____

BEARING _____

ULTIMATE DEPTH _____

ELEVATION _____

DIP _____

PROPOSED DEPTH _____

DEPTH FEET	FORMATION	SAMPLE No.	WIDTH OF SAMPLE	GOLD \$	SLUDGE GOLD \$		
	Slate inclusion at 301.4.						
	319.0-354.0 - Same as above with greenish colored siliceous amygdalus or patches instead. Some chloritic patches.						
	354.0-400.0 - diabasic, massive, abundant white feldspar.						
	Massive andesite flow or gabbro sill (?)						
400.0	END OF HOLE.						

N.M.P., TORONTO—STOCK FORM NO. 501 REV. 12/51

DRILLED BY _____

SIGNED _____

INPUT

LEGEND

3

DIABASE

2

GRAPHITIC SLATE (10% Po, 5% Py)

1

ANDESITE

HOLE N^o T-65-28 STRIKE N-15°E DIP-48°
LOT 6 CON-6 CRAWFORD TOWNSHIP
SCALE 1"=100'

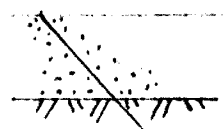
MAY 1972

P. 1/2

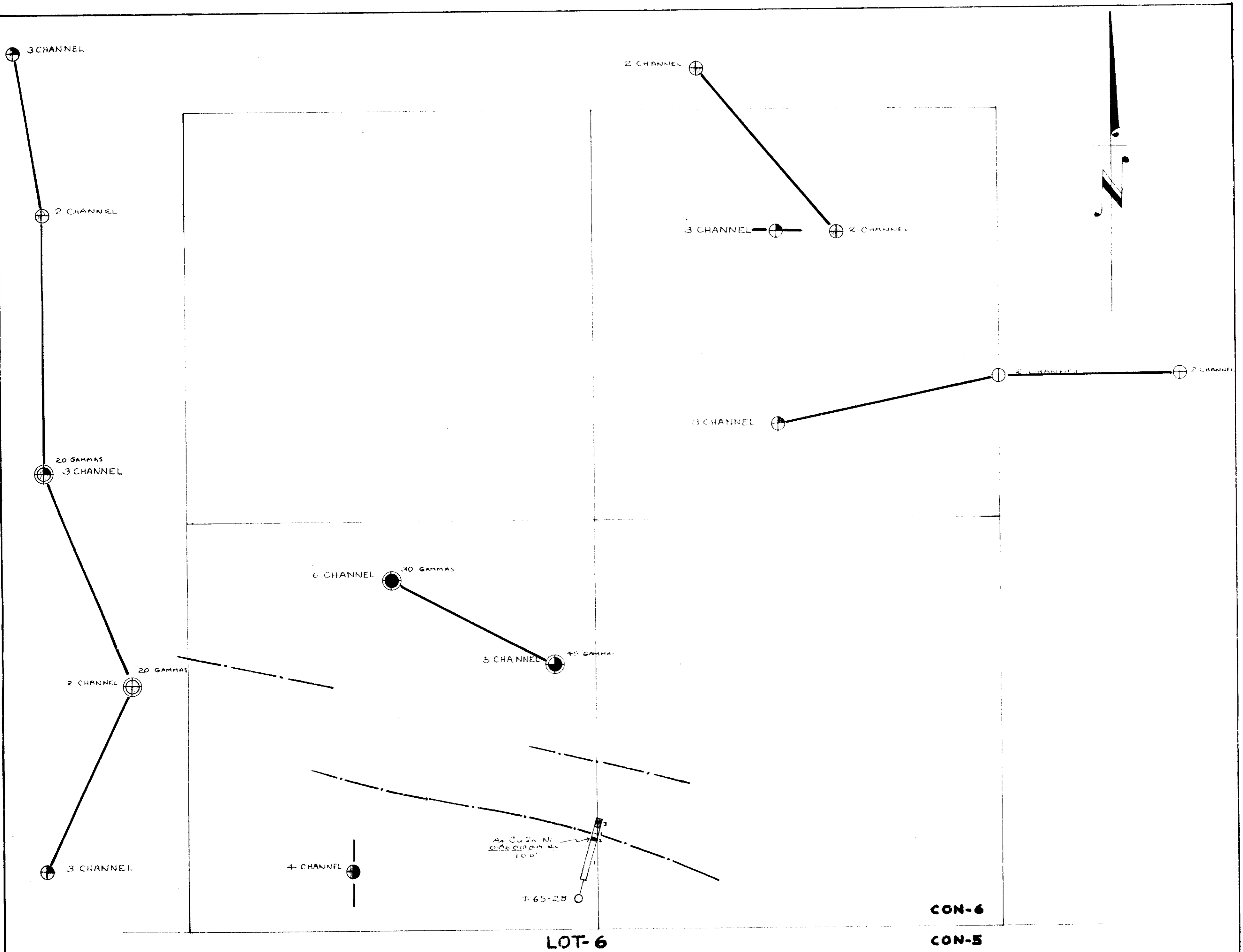
T 65-28
Keewi
Hole

EM GROUND
CONDUCTOR

EM GROUND
CONDUCTOR



Ag Cu. Zn. Ni
0.060100.44 NIL
10.0



LEGEND

- DIAMOND DRILL HOLE
- GROUND CONDUCTOR
- QUESTOR INPUT ANOMALY NORTH SOUTH FLIGHT LINES
- QUESTOR INPUT ANOMALY EAST
- 3 DIABASE
- 2 GRAPHITIC SLATE (10%Po. 5%Py
- 1 ANDESITE

MINTYRE PORCUPINE MINES LTD.

CRAWFORD TWP. ONT.

SCALE 1" = 200'

CRAWFORD III CLAIMS

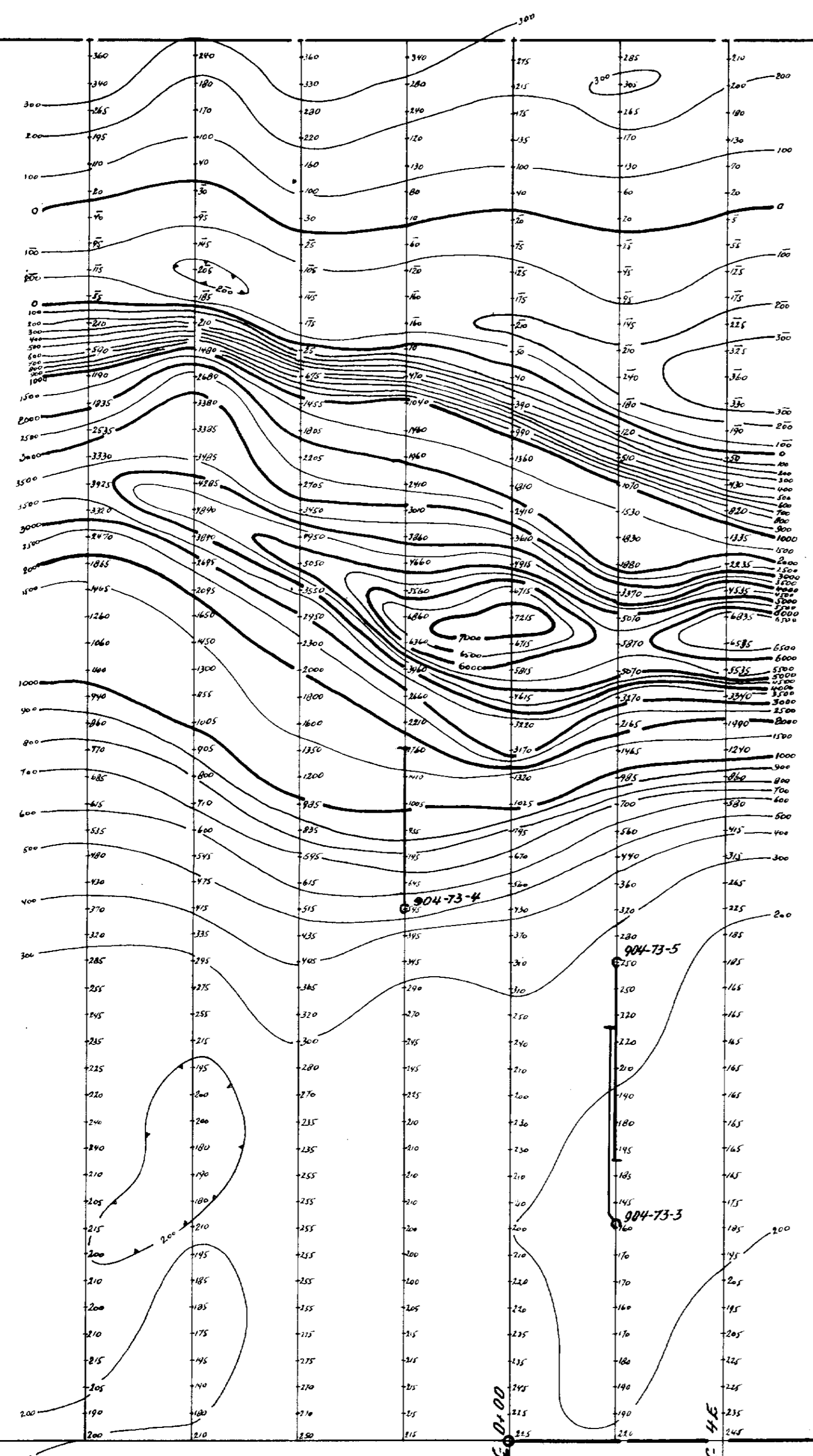
DDR #10

MAY 1972

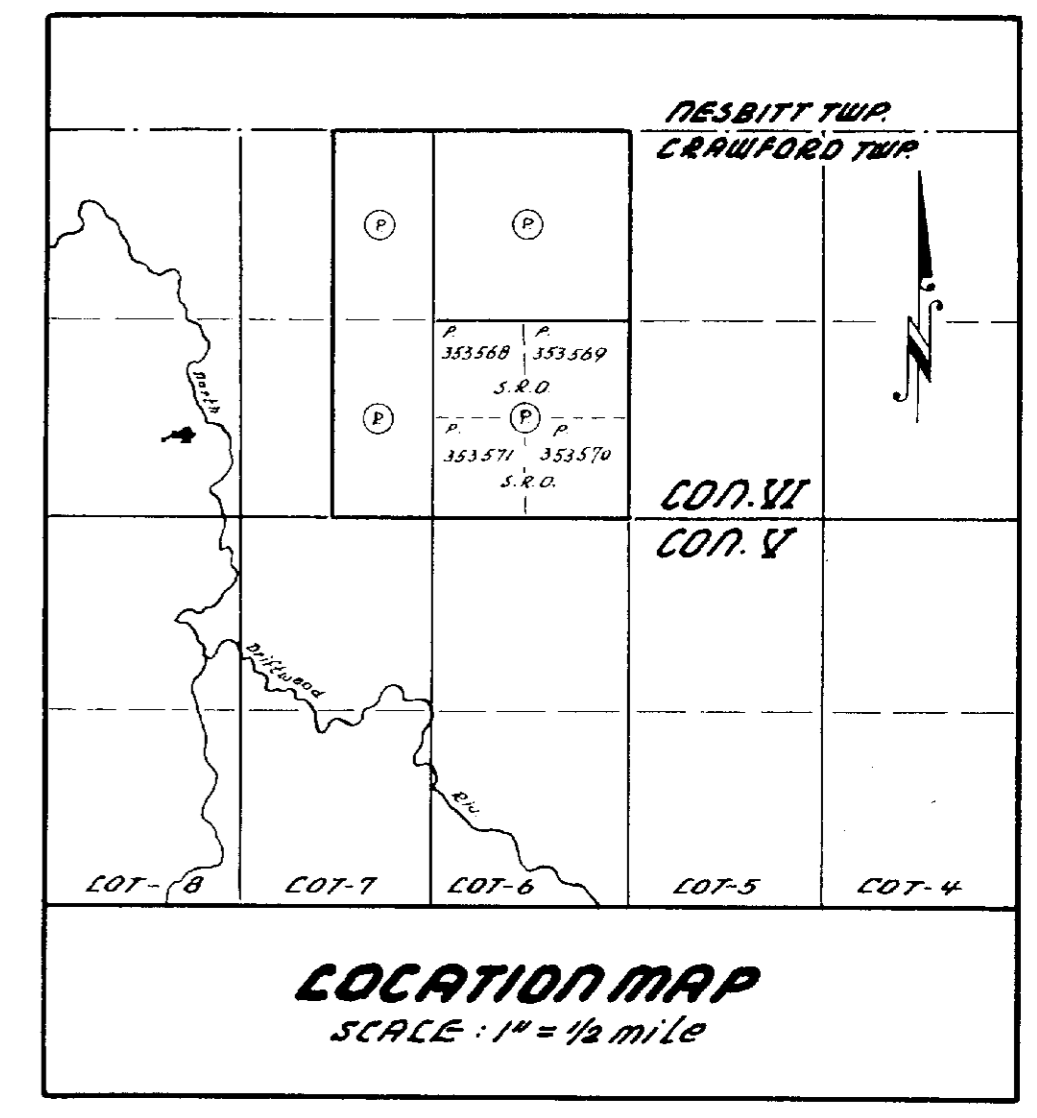


42A14SR0036 10 CRAWFORD

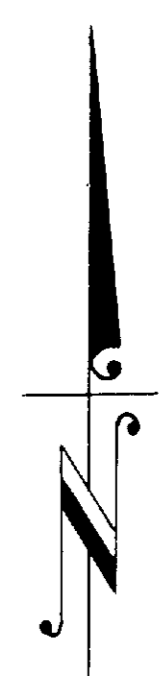
NESBITT TWP.
CRAWFORD TWP.



ANOMALY 3 AREA



LOCATION MAP
SCALE: 1" = 1/4 mile



Base Line
(cut West to Road)

L-8W L-6W L-4W L-2W L-0-00 L-2-E L-4-E L-6-E L-8-E L-10-E L-12-E L-14-E L-16-E L-18-E L-20-E

P
353568

P
353569

P
353571

P
353570

805-73-1

LOT - 7

LOT - 6

LEGEND
 ◊ Diamond Drill Hole
 ○ 25' Depth of Overburden in feet.
 --- 1000 Gamma Contour
 --- 500 Gamma Contour
 --- Magnetic Low
 Contour Intervals: Below 1000 - 100 Gammas
 Above 1000 - 500 Gammas
 Instrument used: Sharpe M.F. 1.

MONTYRE PORCUPINE MINES LIMITED
 ABITIBI OPTION
 CRAWFORD TOWNSHIP
 ONTARIO
SURFACE MAP
 SCALE: 1" = 200' DATE: Sep, 1973.
 MAGNETOMETER SURVEY &
 DRILL LOCATION

CON. VI
 CON. V
 LOT-5
 CRAWFORD TWP
 DDE # 10



210

LOT - 7

LOT-5