



42A14SW0205 2.3870 CARNEGIE

3870

010
MINING LANDS SECTION
MAY 11 1981
RECEIVED

MAX MIN II AND MAGNETIC SURVEY
of
ROSARIO, CARNEGIE TWP. CLAIMS

by:

Bruce Durham

Rosario Resources Canada Ltd.
P. O. Box 1367, Timmins, Ontario

Volume III

April 15, 1981

L.D

INTRODUCTION

Purpose of Survey

A systematic Max Min II EM and magnetic survey was carried out over staked claims held by Rosario for the purpose of exploring for base metal massive sulphides and for delineating graphitic and ultramafic marker horizons. The area covered by this report is an extension of work carried out during 1980 over portions of Lots 2 - 12 Concessions II - IV (Vol I and Vol II Dec. 1980).

Location and Access

The area covered by this report is located in western Carnegie Twp. 20 miles north of downtown Timmins and is accessible by road via Highway 655, the Camp 40 road, and interconnecting winter logging roads (see map).

Property

The unpatented claims covered by the survey are held by Rosario Resources Canada Ltd. These are:

<u>Claim No.</u>	<u>EM</u>	<u>Magnetometer</u>
P. 550886	20 days	40 days
P. 550887	20 days	40 days
P. 550888	20 days	40 days
P. 550889	20 days	40 days

Previous Work

Drilling in lot 12, Con IV S $\frac{1}{2}$ was completed (Timmins file T 1098 Abel, E.) to test a conductor. Ultramafics are reported in the hole. Inco completed 3 holes on an Abitibi half lot in lot 11 to the east of the Rosario staked claims.

There is no previous work reported for lot 12, con 6, N $\frac{1}{2}$.

However the Keevil mining group report air borne and ground EM and magnetometer surveys for lot 9 con V S $\frac{1}{2}$. (Timmins file T-1309)

The west edge of the survey area (lot 12) was covered by an Input survey for Mattagami L. in 1970 (Timmins file T617). The complete Carnegie area has also been covered by at least 3 Input surveys prior

to 1980 and new surveys were flown ~~flown~~ for parties unknown in 1980.

Rosario Resources Canada Ltd. carried out extensive magnetometer and Max Min II EM surveys as well as a limited IP survey during 1980. This work has been filed with the Ministry of Natural Resources for assessment credit. Rosario Resources Canada Ltd. also drilled 3 diamond drill holes during December 1980 and January 1981. Results of this work has also been filed with the Ministry of Natural Resources.

Survey Procedure and Instrumentation

The EM survey was carried out using a Max Min II unit manufactured in 1980 by Apex Parametrics of Toronto. A 600 foot cable (coil separation) was used for the horizontal loop moving coil configuration. Three frequencies were observed (i.e.) 1777 Hz, 888 Hz, and 444 Hz.

Lines at 400 foot spacing were read with stations at 100 foot intervals. Profiles of the inphase and out-of-phase data are plotted at 1" = 20% on maps at the back of this report. The EM and magnetic surveys were carried out during January and February 1981.

The magnetic survey was done using a Barringer GM-122 total field magnetometer. A contoured map at 50 gamma intervals is given at the back of this report.

Base lines and tie lines were read by looping back to a base station. The main base station for the whole grid including all 5 sheets is located at 99W on 2640N near the Camp 40 Road (value 59538 gammas).

Max Min II EM survey was done by Geoex Ltd. from Timmins, Ontario. The magnetic survey was done by Ben Brzuskwiewicz of Rosario Resources Canada Ltd.

The drafting was done by Ben Brzuskwiewicz, assisted by personnel from Geoex Ltd. in Timmins and base maps were prepared from survey plans by Wagih Youssef of Rosario.

Statistics

Approximately 4.3 miles of grid line was cut on the 4 claims covered by the survey (S $\frac{1}{2}$ Lot 9 Con V)

Max Min II EM readings were observed at 152 stations and magnetometer readings were observed at 228 stations.

Interpretations

Magnetics Sheet 3 (part)

An anomalous magnetic high which crosses the northern part of claim P. 550889 is interpreted to be due to the presense of ultramafic rocks. Further more, the limited lateral extent and fair width on L 180W may indicate an irregular shaped intrusive. If these rods are ultramafic flows the magnetite portion appears to have been destroyed by alteration processes. The remainder of this claim group has only weak magnetic trends.

Max Min II EM Sheet 3 (part)

Two possible conductor trends are present on the claim group. The more southerly occurs at 81N on L 160W^{a)} and may extend as far west as L 172W at 86N.^{b)} This conductor is probably a narrow graphitic zone between volcanic flows. The conductor which occurs at 95N on 160W may extend westerly to L 172W at 101N.

Conclusions and Recommendations

Both of these conductors should be verified by IP and /or vertical loop EM. If results show the northern conductor to be real, it , in particular, warrants diamond drilling since it is untested and lies adjacent to what may be an ultramafic marker horizon.

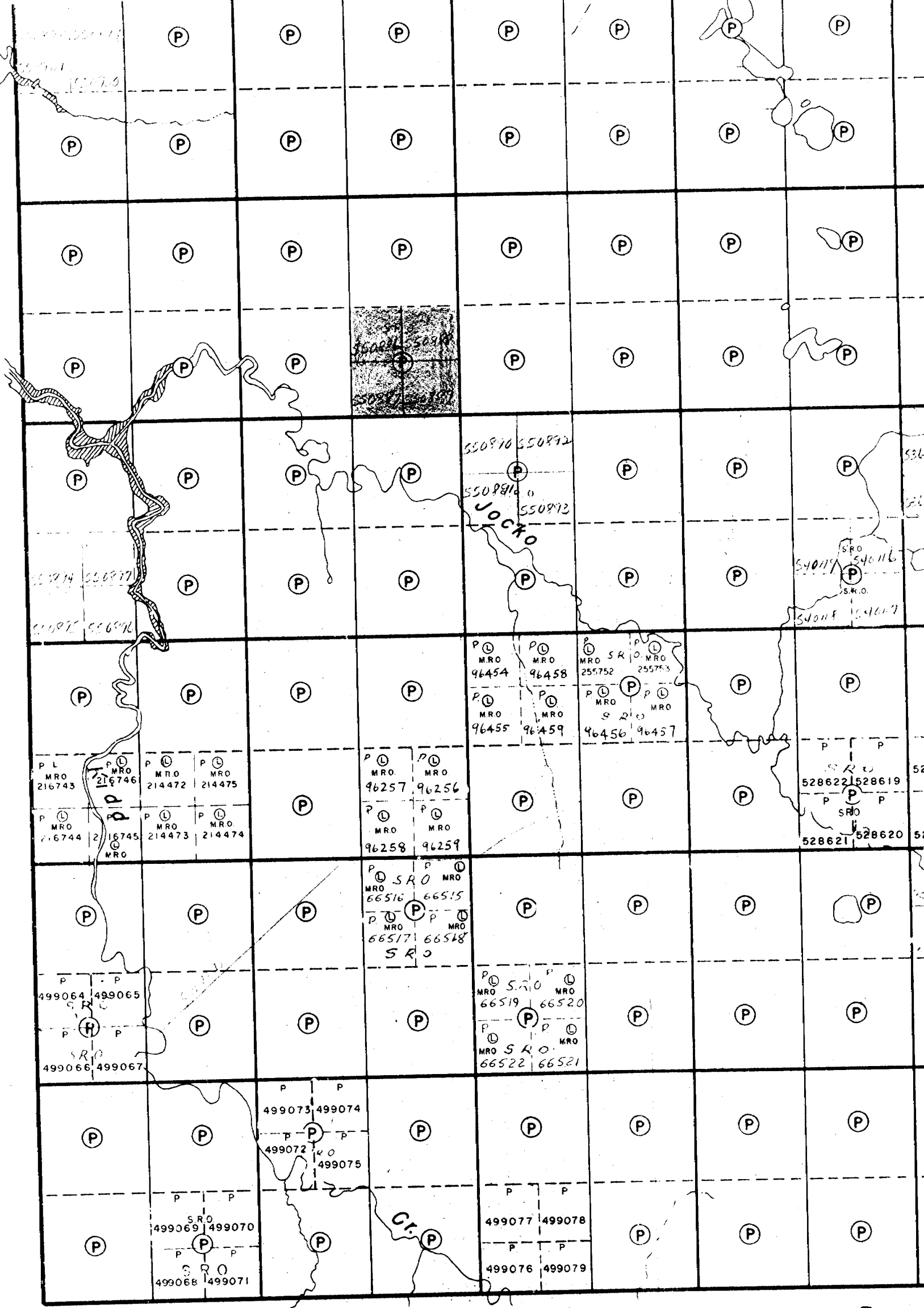
Respectfully submitted



R. B. Durham
Project Geologist

CARNEGIE IWB

Reid Twp.



12 11 10 9 8 7 6 5

Kidd Twp.

144

JK

CARNEGIE

DISTRICT
COCHRAN

PORCUPINE
MINING DIVISION

SCALE: 1-INCH = 400 FEET

LEGEND

- PATENTED LAND
- CROWN LAND SALE
- LEASES
- LOCATED LAND
- LICENSE OF OCCUPATION
- ROADS
- IMPROVED ROADS
- RAILWAYS
- POWER LINES
- MARSH OR MUSKEG

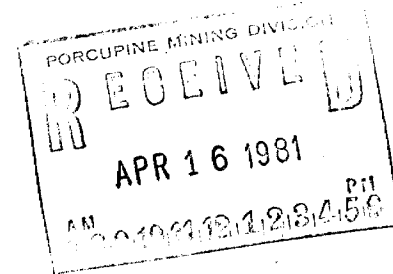
NOTES

L.O. 1344 shown thus: 

400' Surface rights reservation around rivers

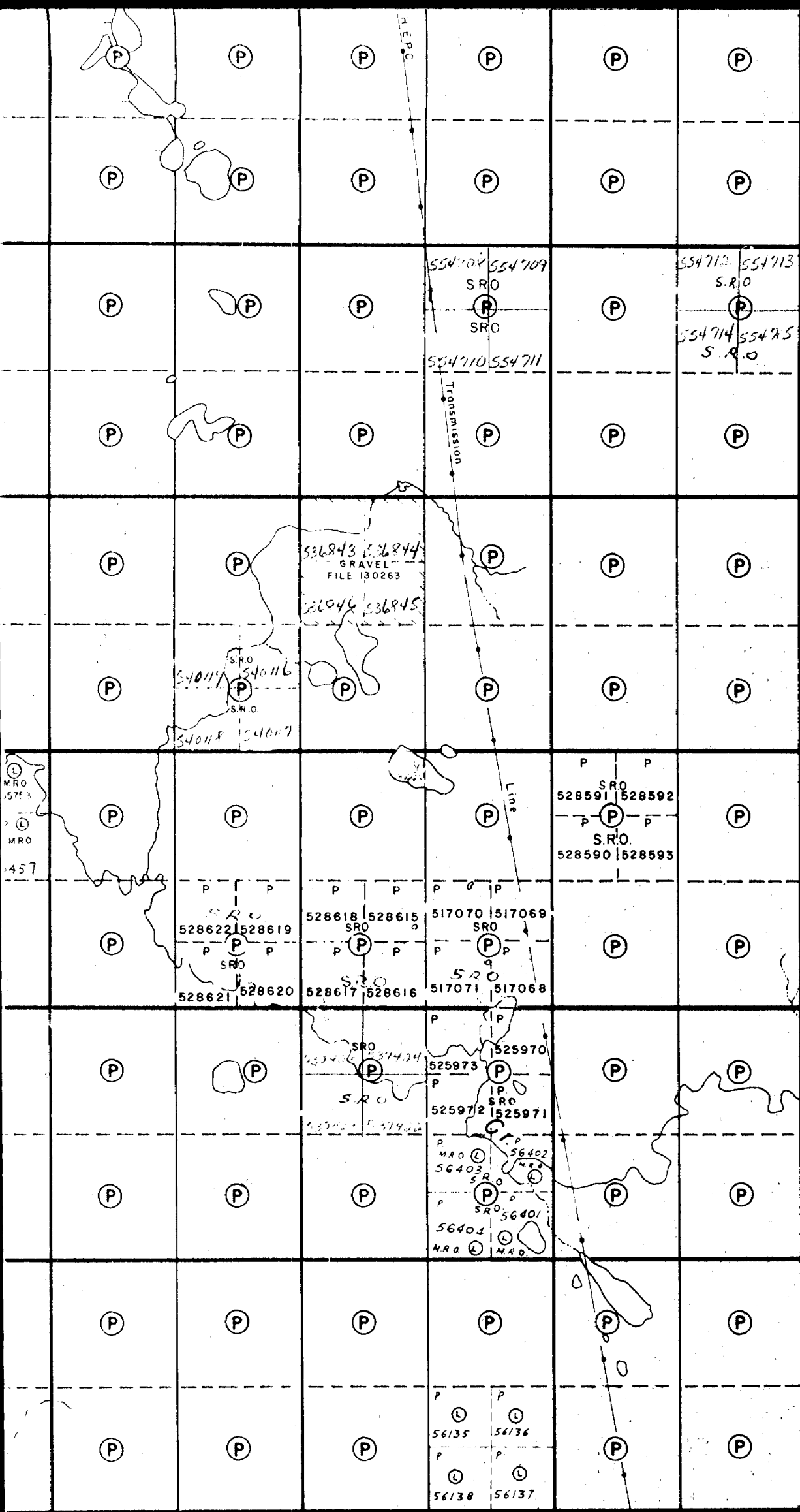


Location Map
1" = 1/2 mile



PLAN NO. — M

ONTARIO
MINISTRY OF NATURAL
SURVEYS AND MAPPING



VI

V

IV

III

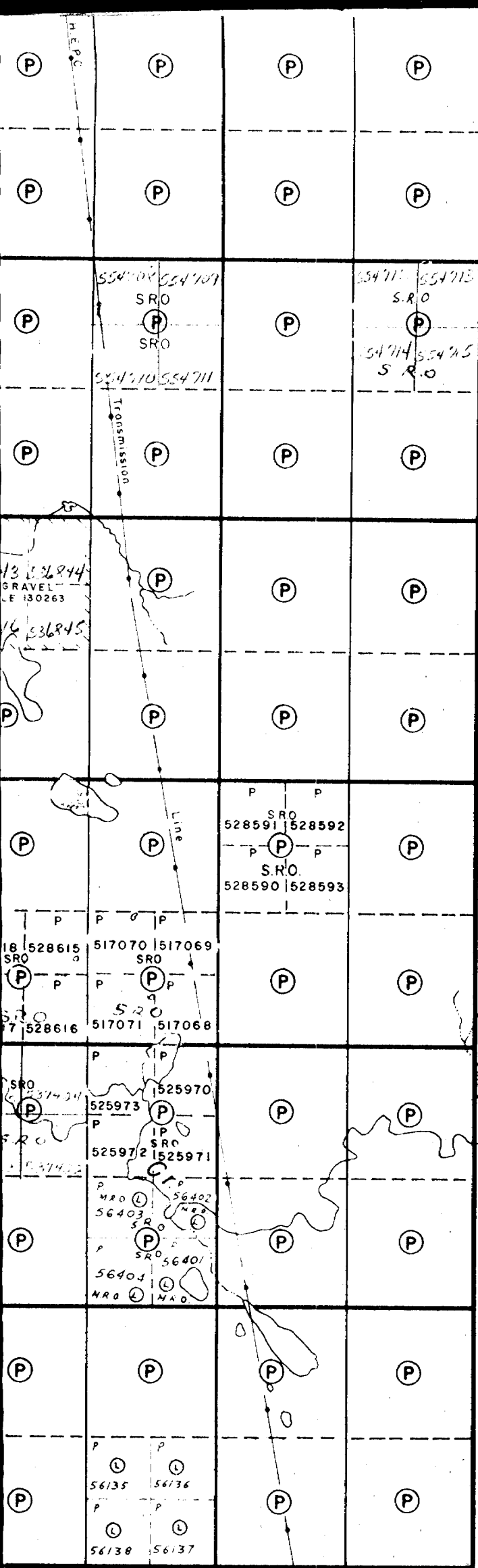
II

I

Prosser Twp.

6 5 4 3 2 1

d Twp.



VI

V

IV

III

II

I

Prosser Twp.

CARNEGIE

DISTRICT OF COCHRANE

PORCUPINE MINING DIVISION

SCALE: 1-INCH = 40 CHAINS

LEGEND

- PATENTED LAND (P)
- CROWN LAND SALE C.S.
- LEASES (L)
- LOCATED LAND Loc.
- LICENSE OF OCCUPATION L.O.
- ROADS
- IMPROVED ROADS
- RAILWAYS
- POWER LINES
- MARSH OR MUSKEG

NOTES

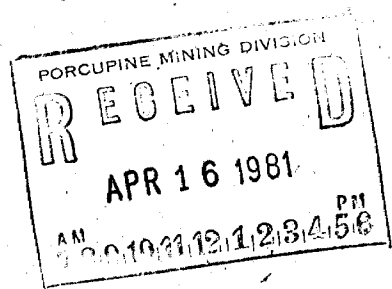
L.O. 1344 shown thus:

400' Surface rights reservation around all lakes and rivers.



900

Location Map
1" = 1/2 mile



PLAN NO. - M-441

ONTARIO
MINISTRY OF NATURAL RESOURCES
SURVEYS AND MAPPING BRANCH

CARNEGIE L.M.B.

I.P.P.M.

Crawford Twp.

THE TOWNSHIP OF
OF
CARNEGIE

DISTRICT OF
COCHRANE

PORCUPINE
MINING DIVISION

SCALE: 1-INCH=40 CHAINS

LEGEND

- PATENTED LAND (P)
- CROWN LAND SALE C.S.
- LEASES (L)
- LOCATED LAND Loc.
- LICENSE OF OCCUPATION L.O.
- ROADS
- IMPROVED ROADS
- RAILWAYS
- POWER LINES
- MARSH OR MUSKEG

NOTES

L.O. 7085 shown thus:

400' Surface rights reservation around all lakes and rivers.

DATE OF ISSUE

NOV 17 1981.

Ministry of Natural Resources
TORONTO

2.3870

PLAN NO. — M-441

ONTARIO
MINISTRY OF NATURAL RESOURCES
SURVEYS AND MAPPING BRANCH

Reid Twp.

Prosser Twp.

VI

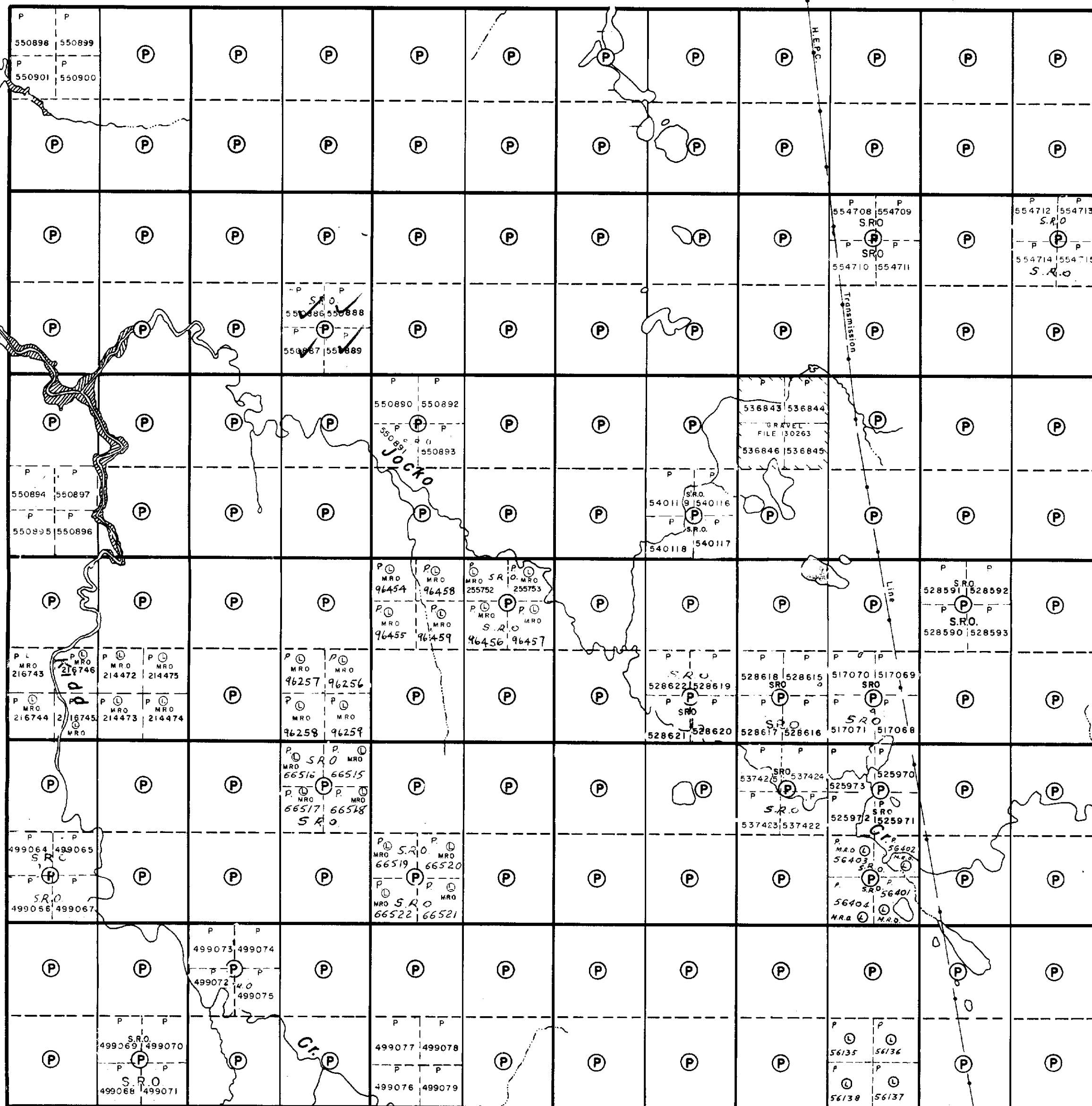
V

IV

III

II

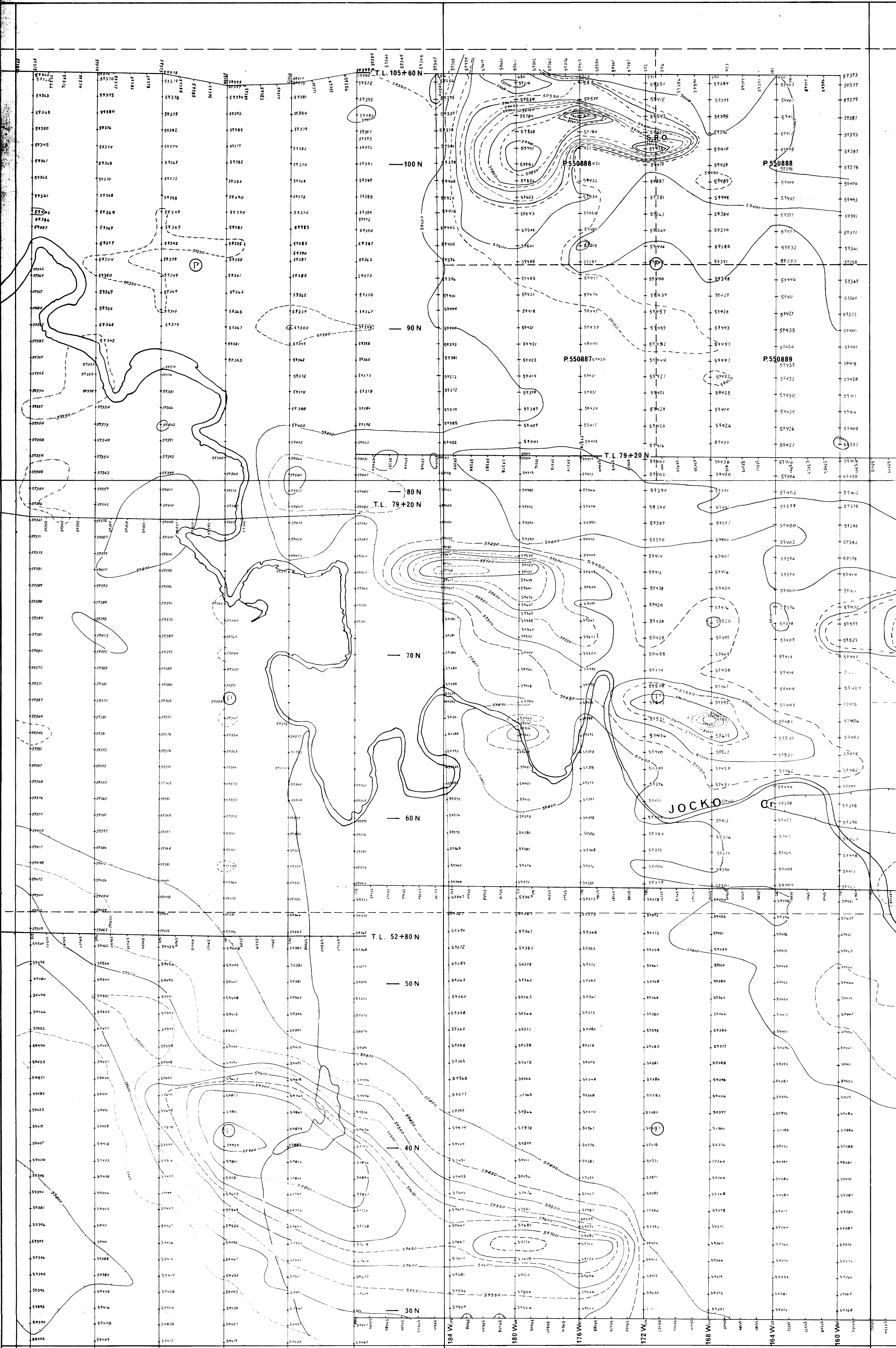
I



12 11 10 9 8 7 6 5 4 3 2 1

Kidd Twp.





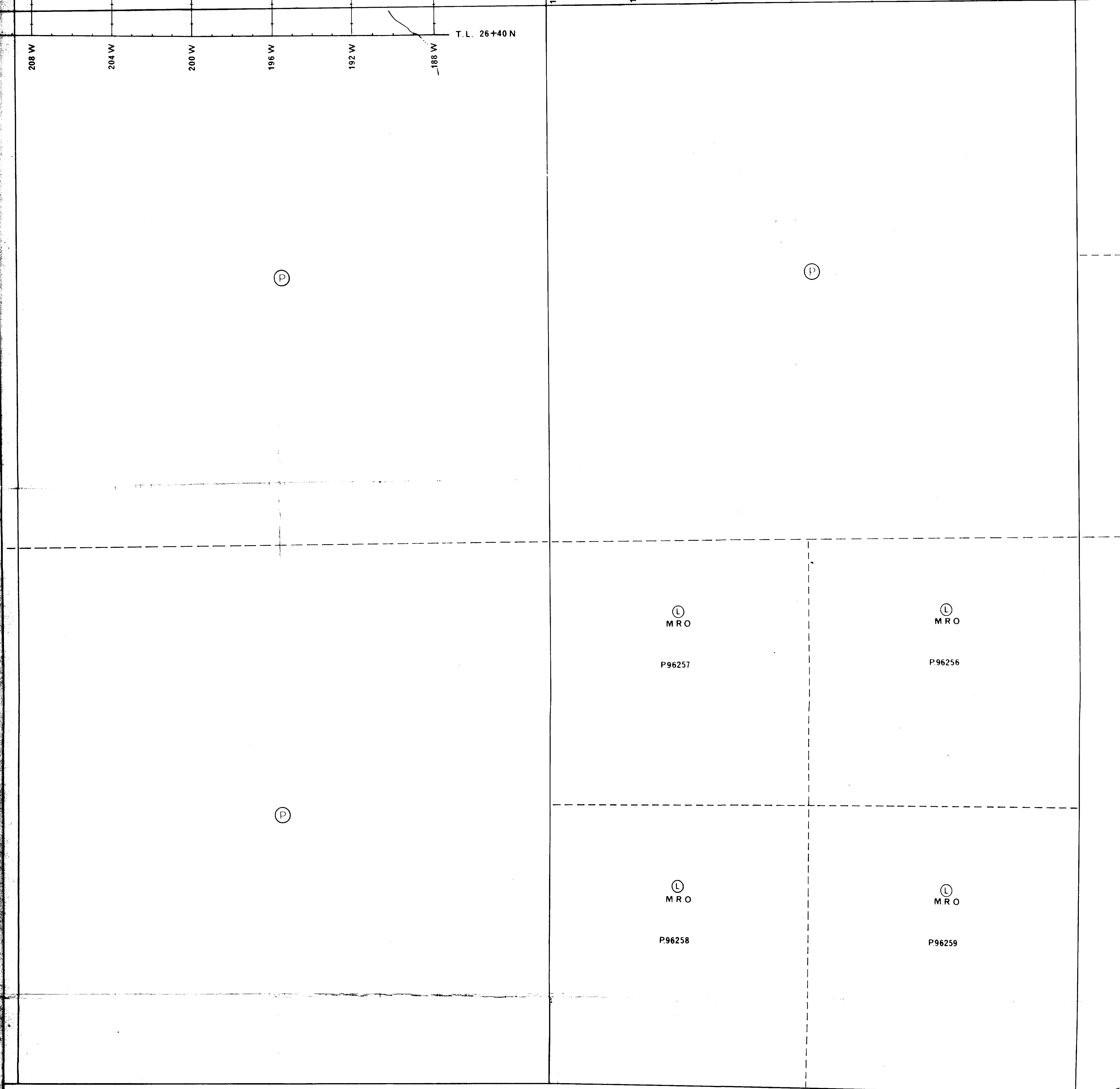
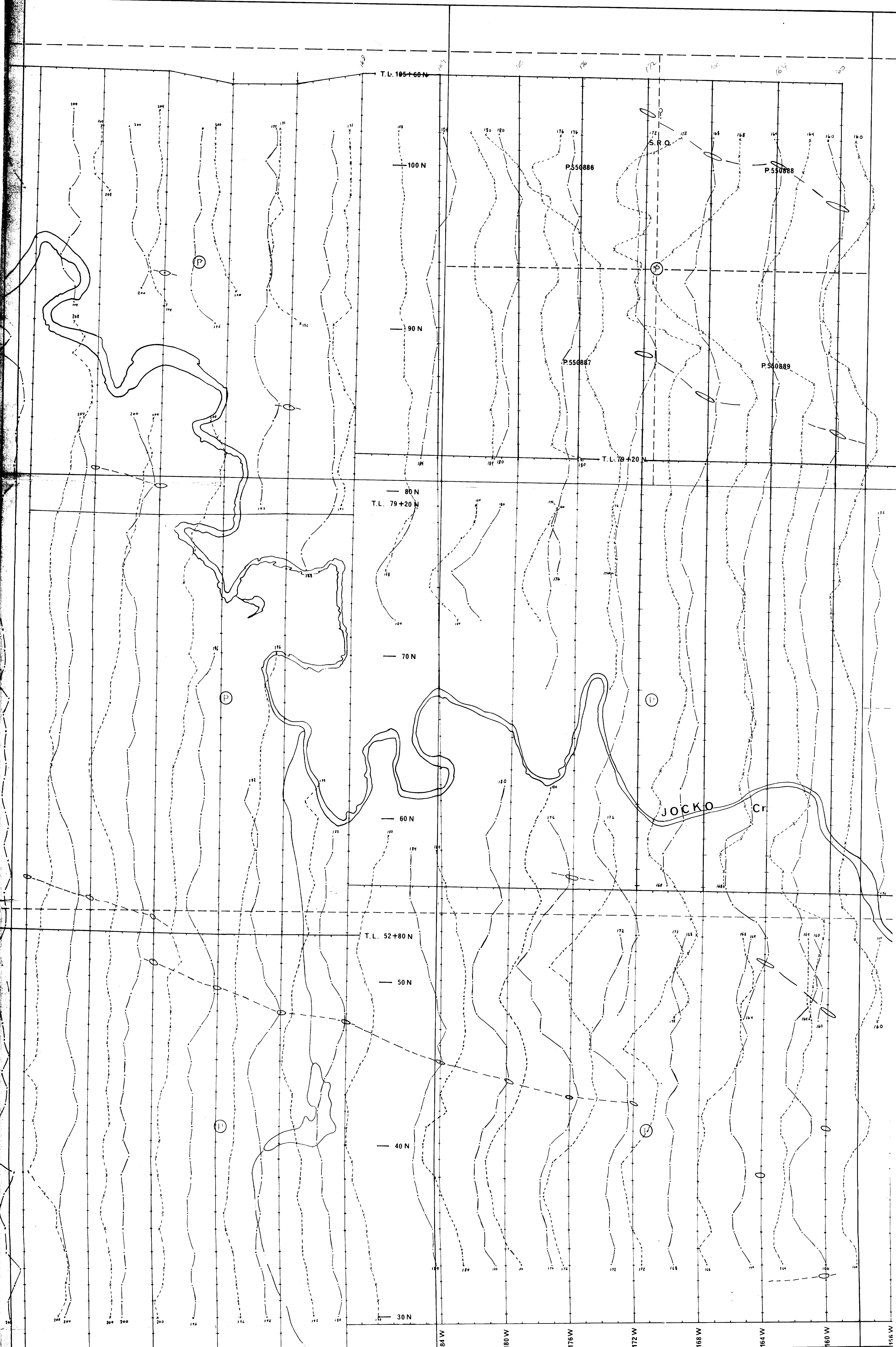
10

9

LEGEND

- Claim Post
- Claim Line
- ~ Creek
- ==== Road
- Power Line
- Ⓟ Patented Land
- Ⓛ Leases
- I.B. Iron Bar



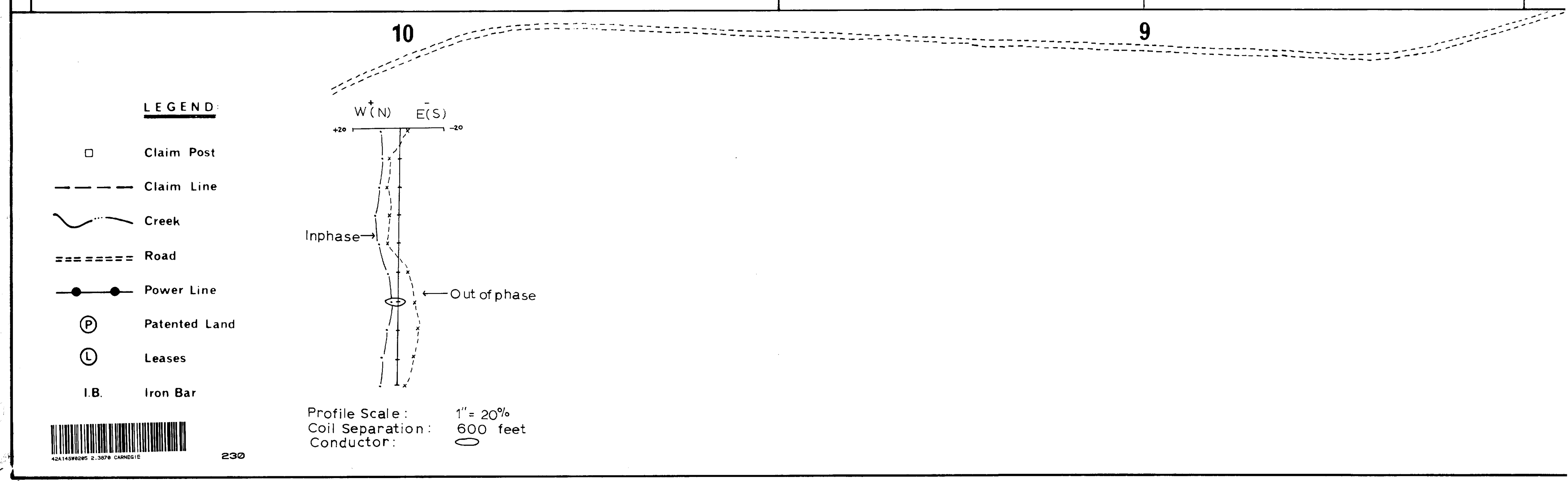
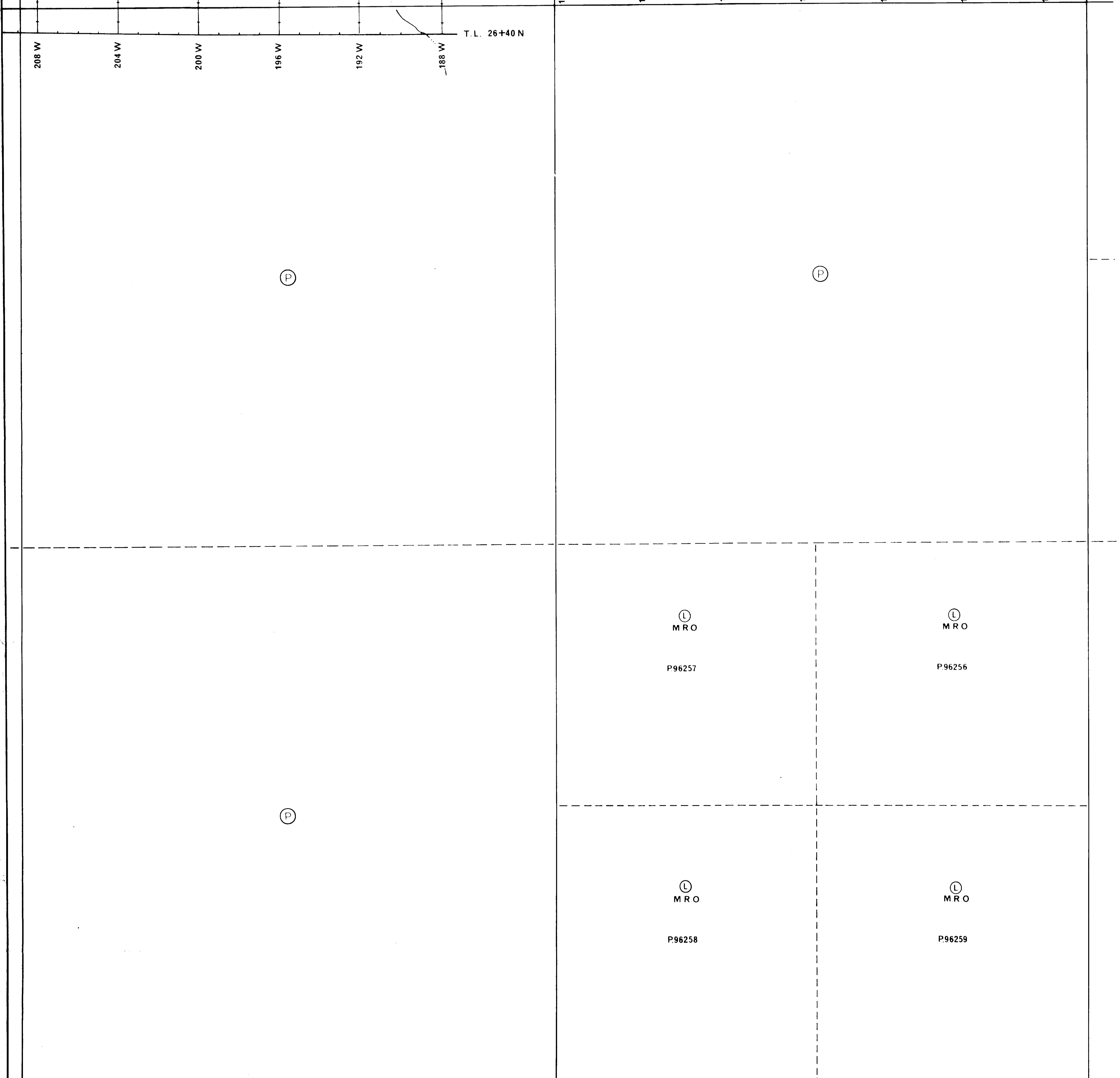
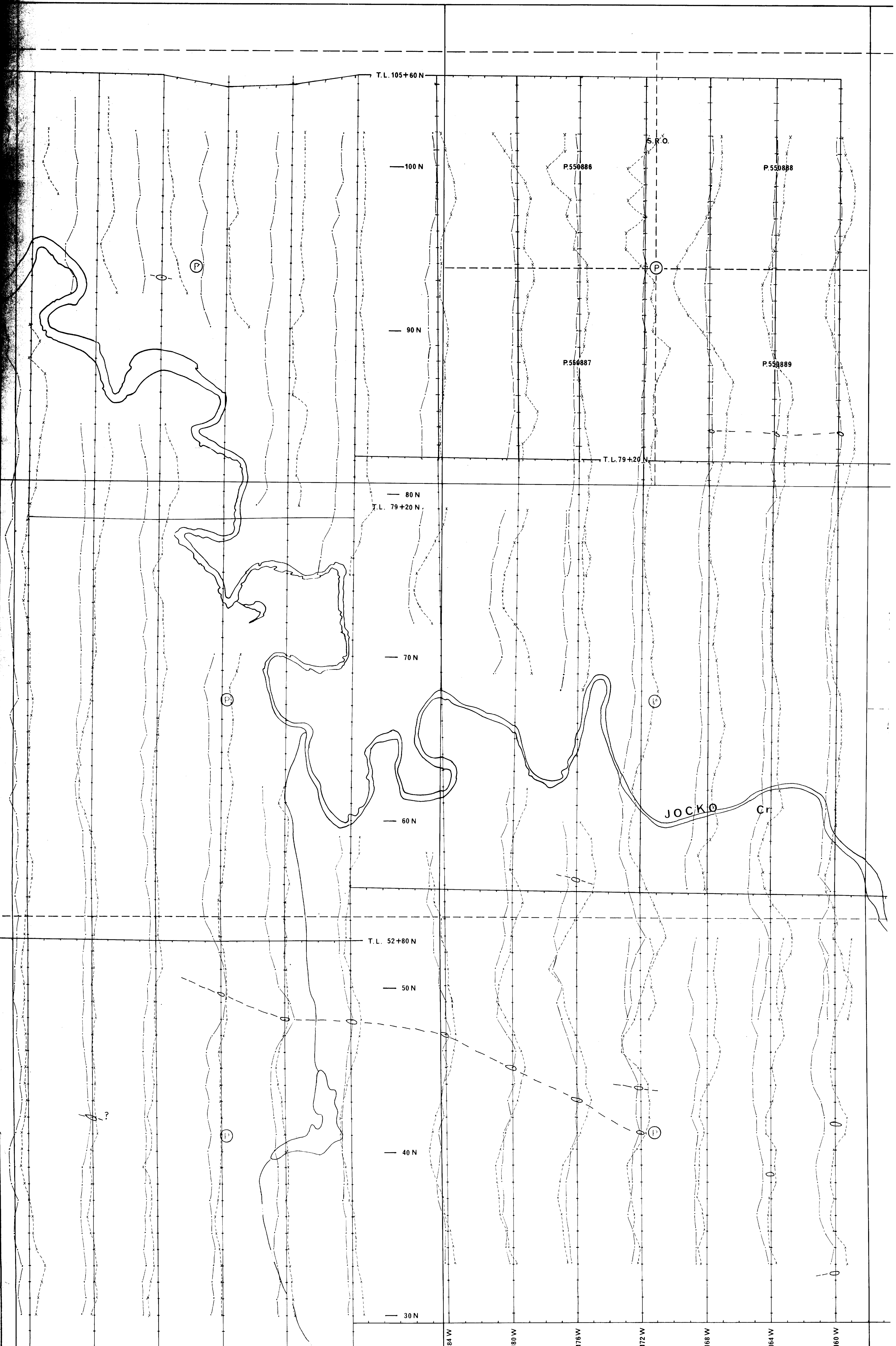


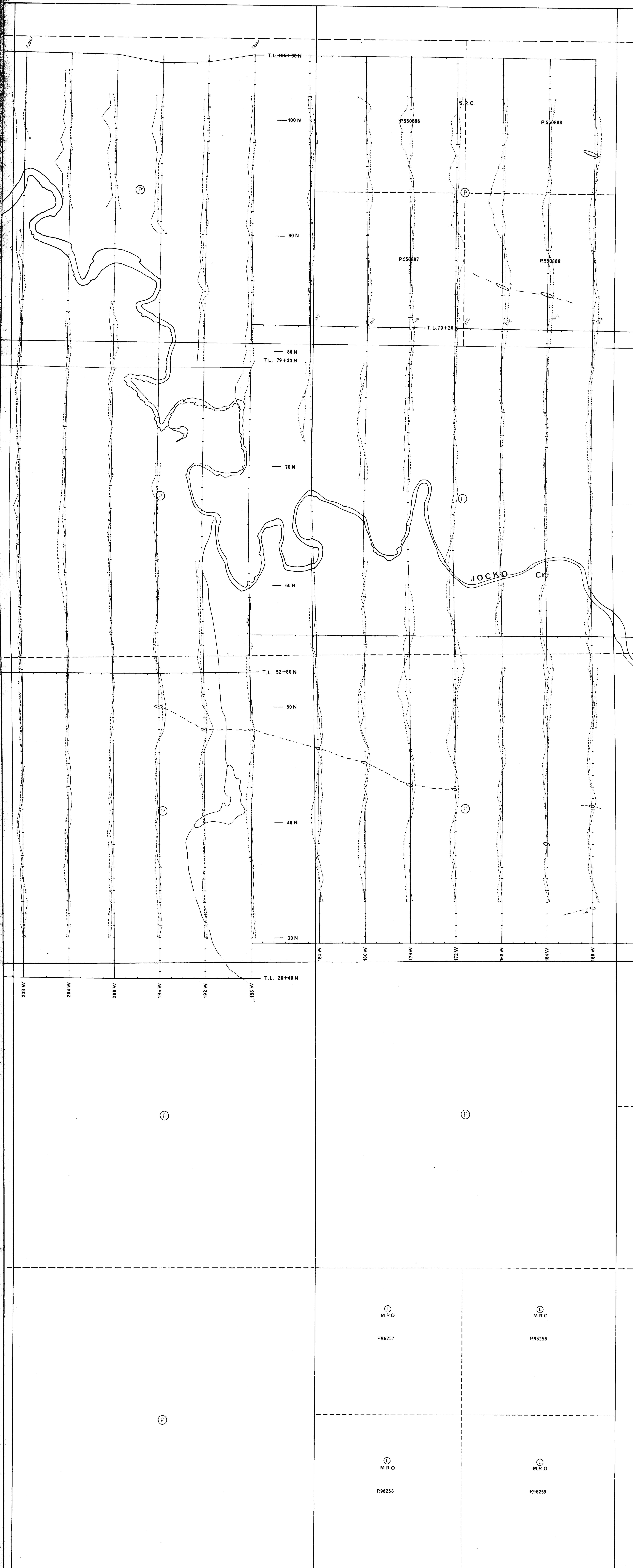
10
9

LEGEND

- Claim Post
- Claim Line
- ~ Creek
- ==== Road
- Power Line
- Ⓟ Patented Land
- Ⓛ Leases
- I.B. Iron Bar

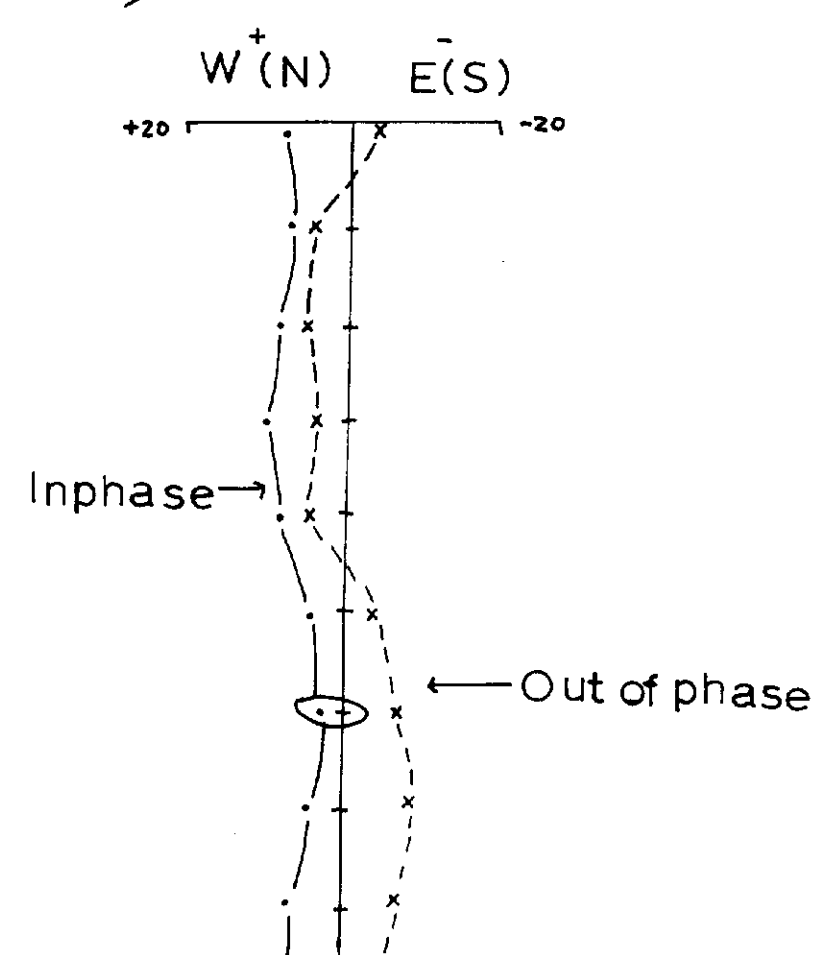
Profile Scale: 1" = 20%
Coil Separation: 600 feet
Conductor: 600 feet



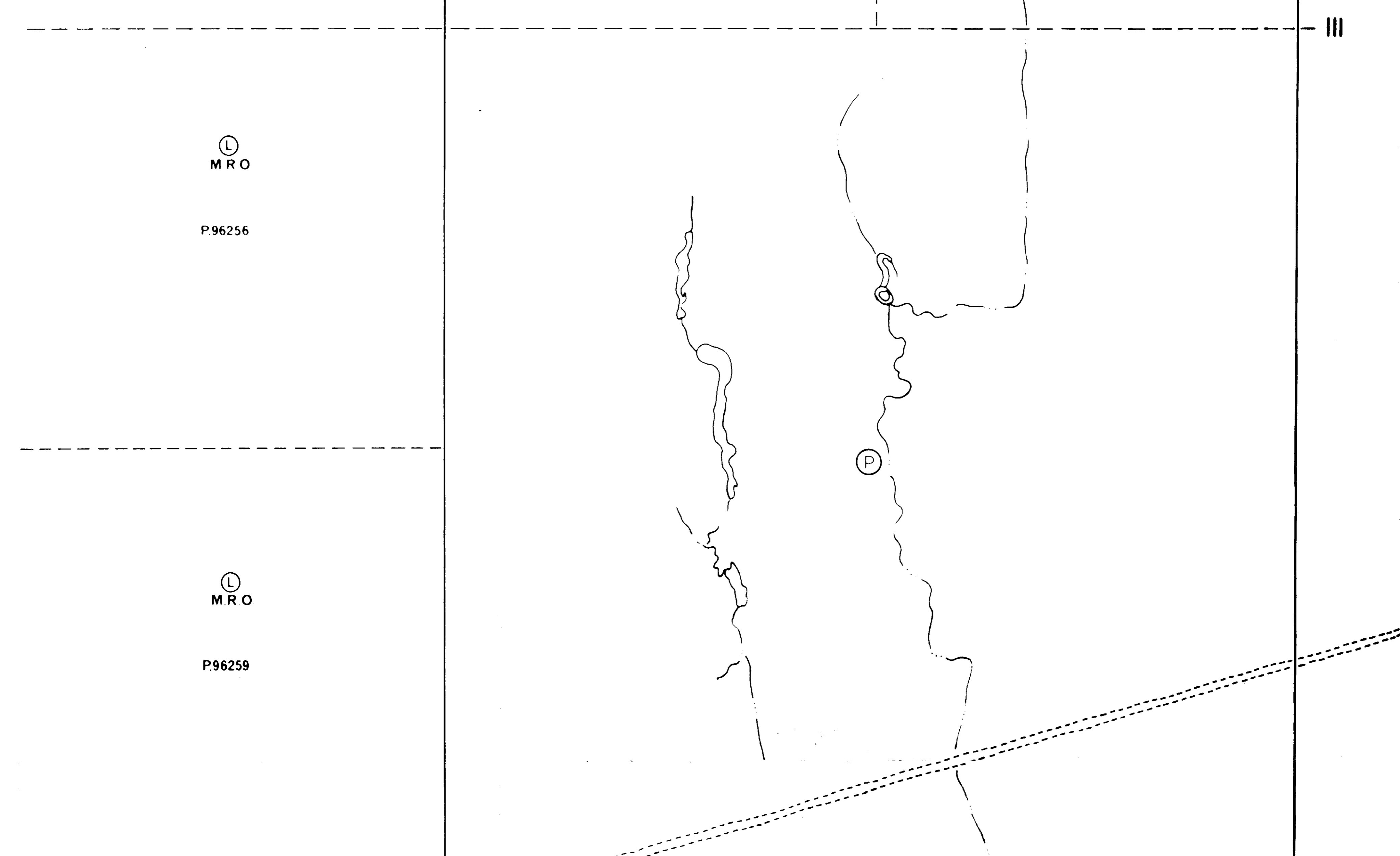
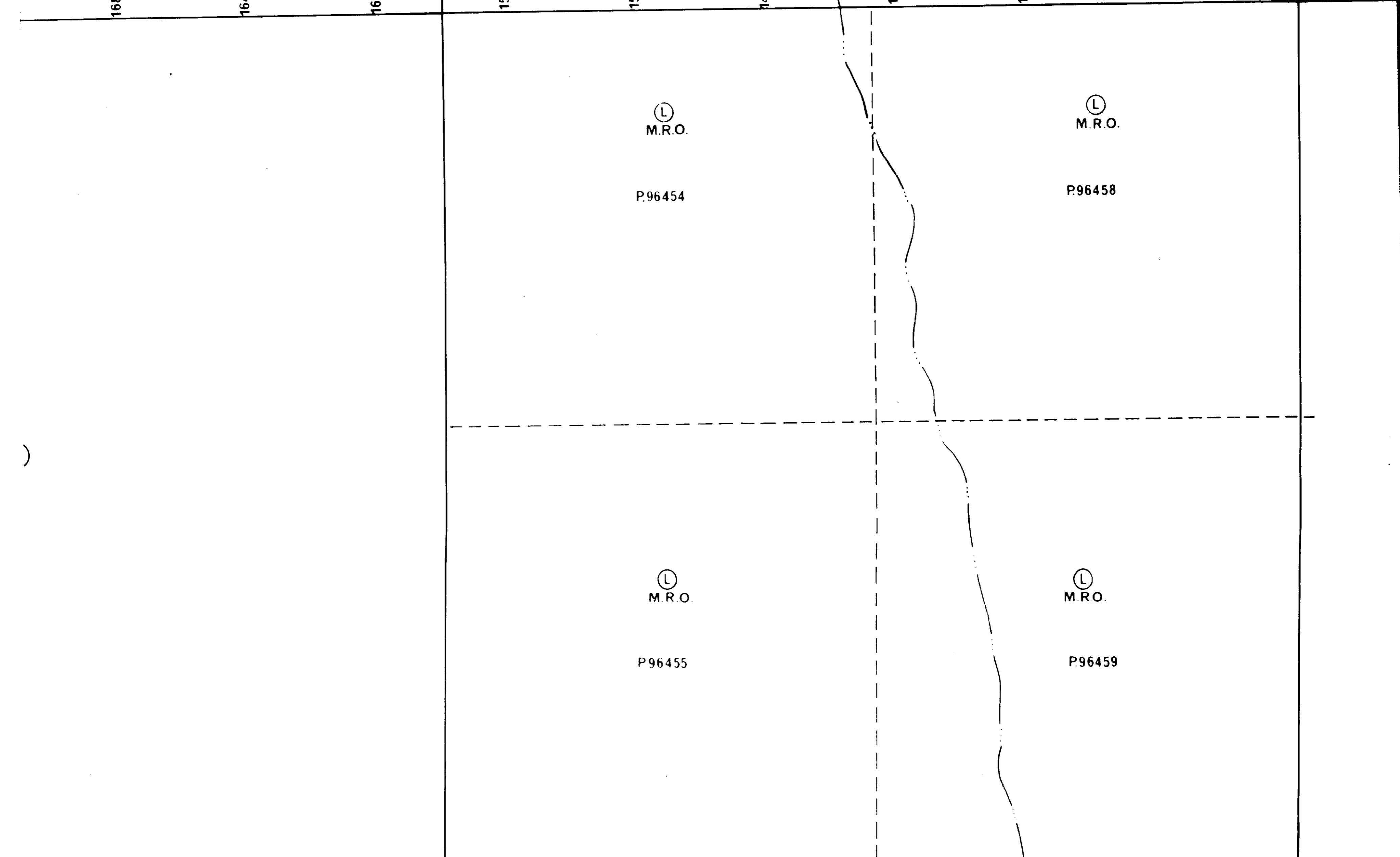
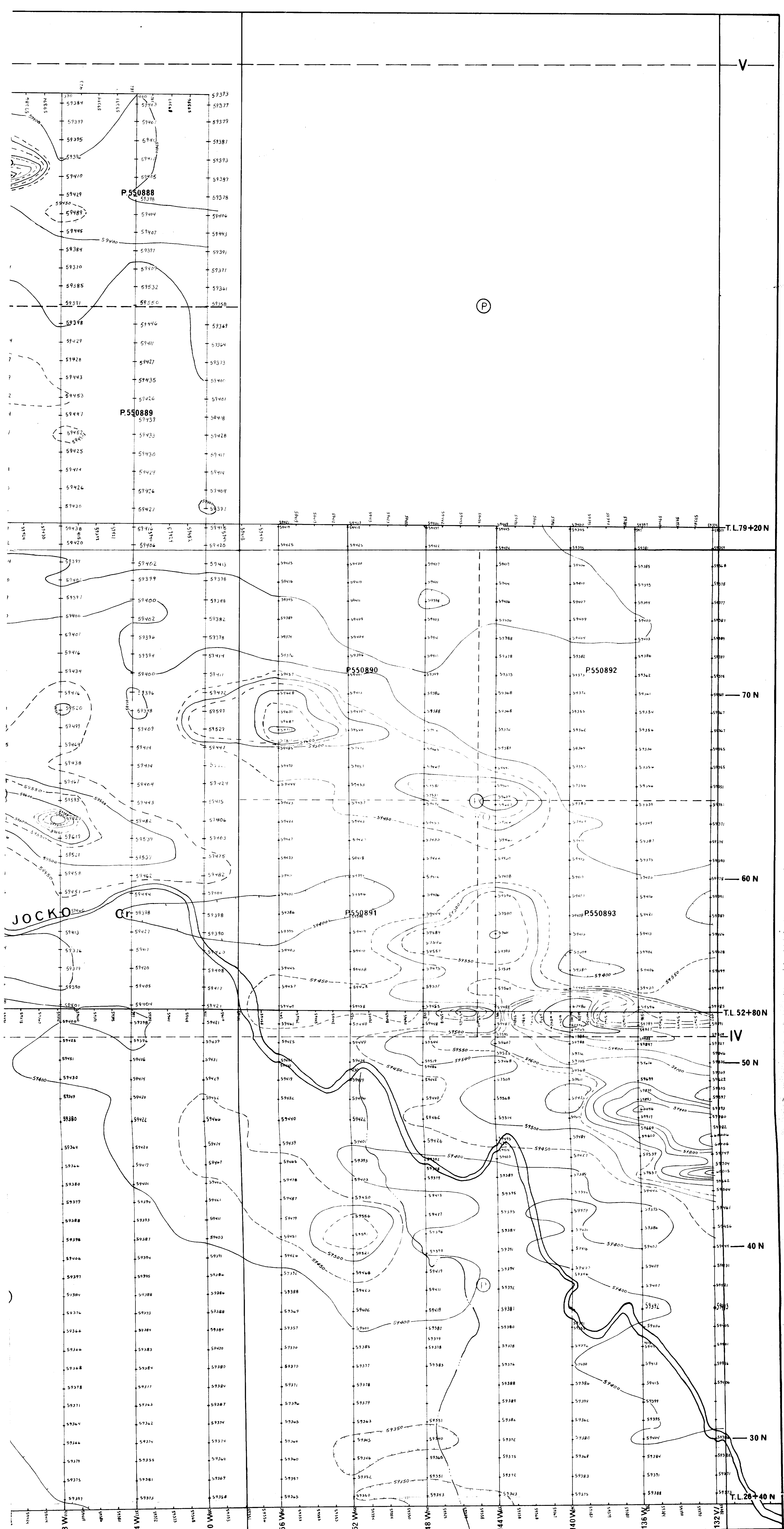


LEGEND

- Claim Post
- Claim Line
- ~ Creek
- ==== Road
- Power Line
- Ⓟ Patented Land
- Ⓛ Leases
- I.B. Iron Bar



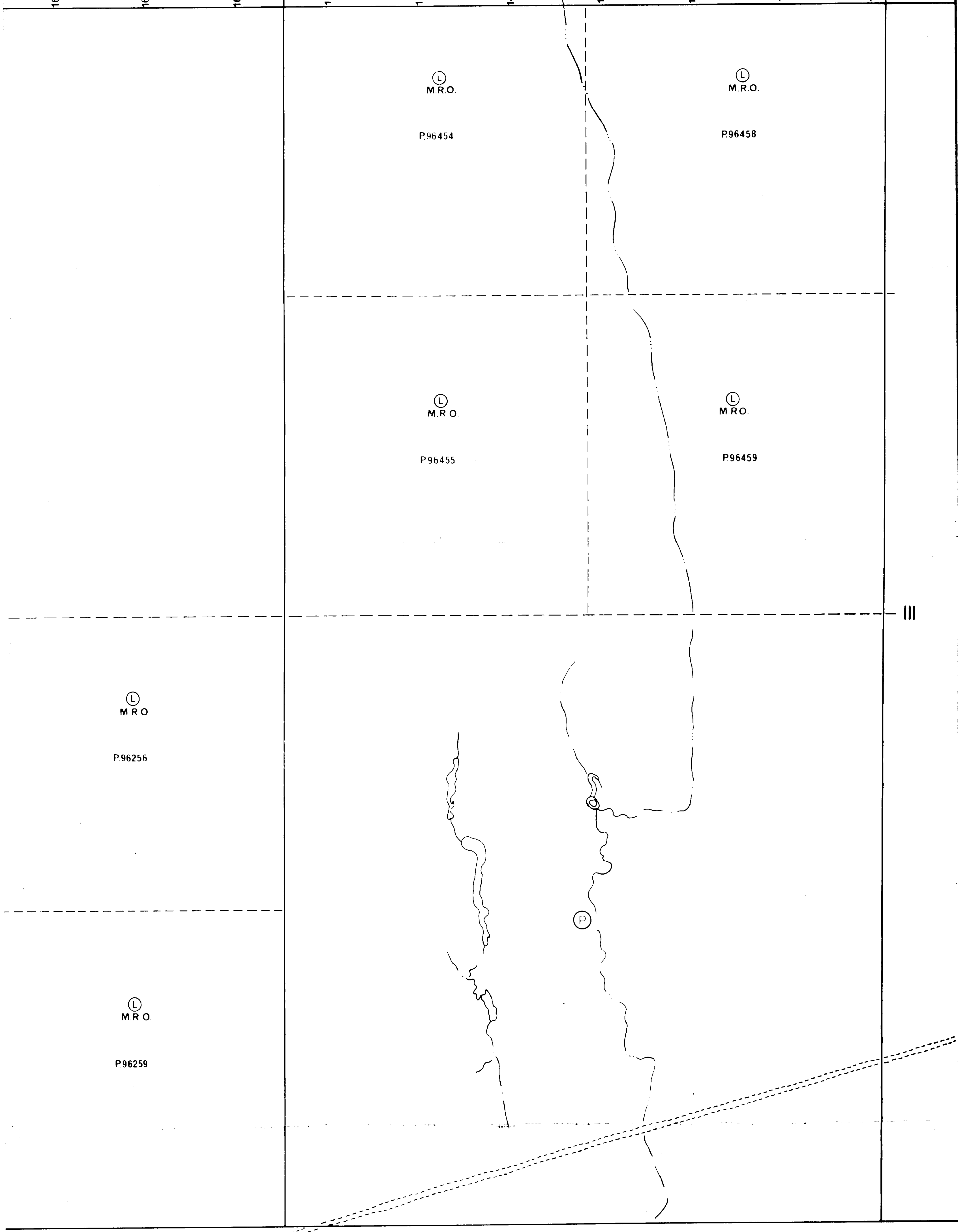
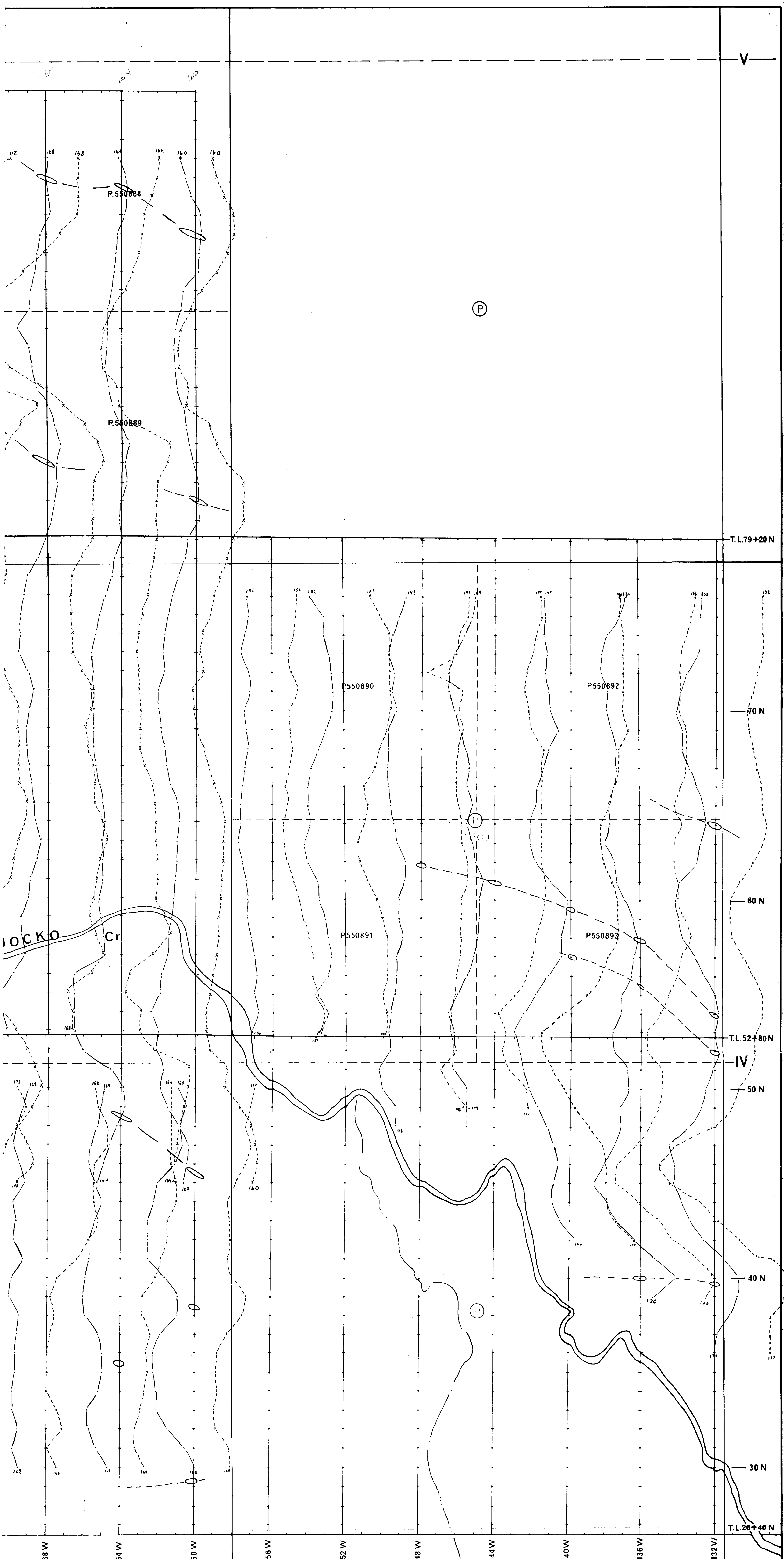
Profile Scale: 1" = 20'
 Coil Separation: 600 feet
 Conductor: Ⓟ



8

Updated April 1991 B. Buckham

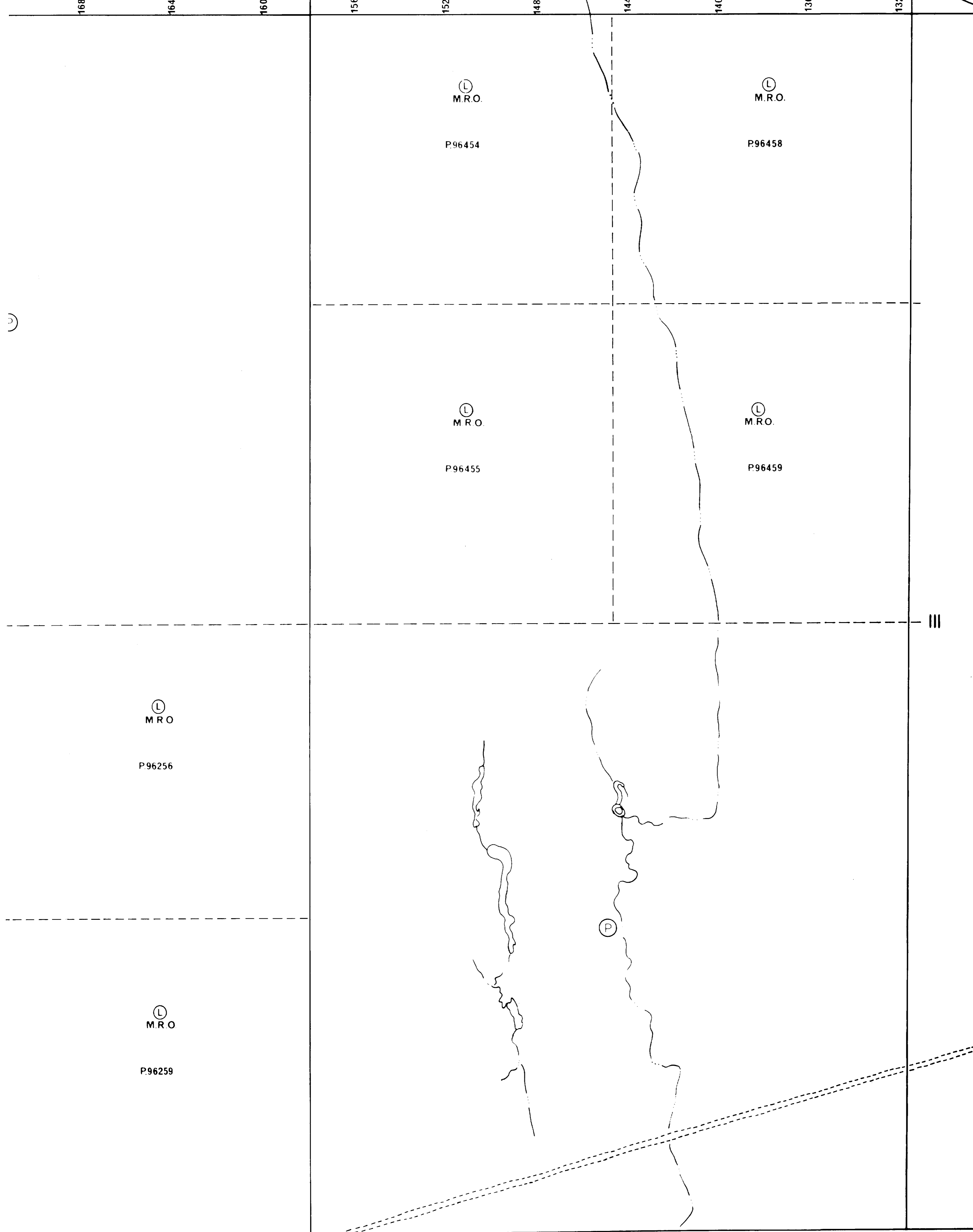
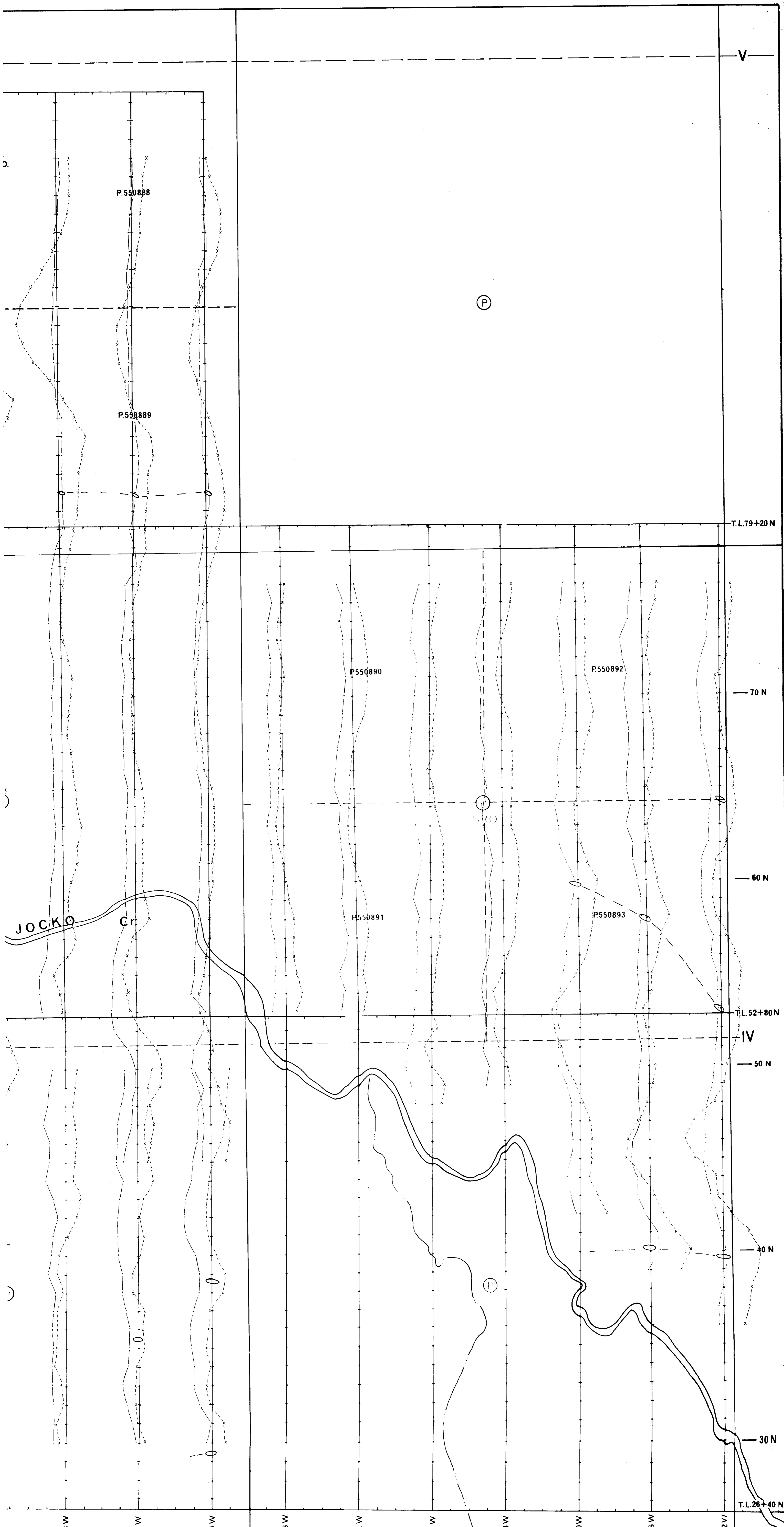
ROSARIO RESOURCES CANADA LTD.	
CARNEGIE TWP.	
TOTAL FIELD MAGNETICS SURVEY	
OPER. : GEOEX	INST. : GEOMETRICS
SCALE : 1" = 200'	DATE : JULY-OCT. 1980



8

Updated April 1981

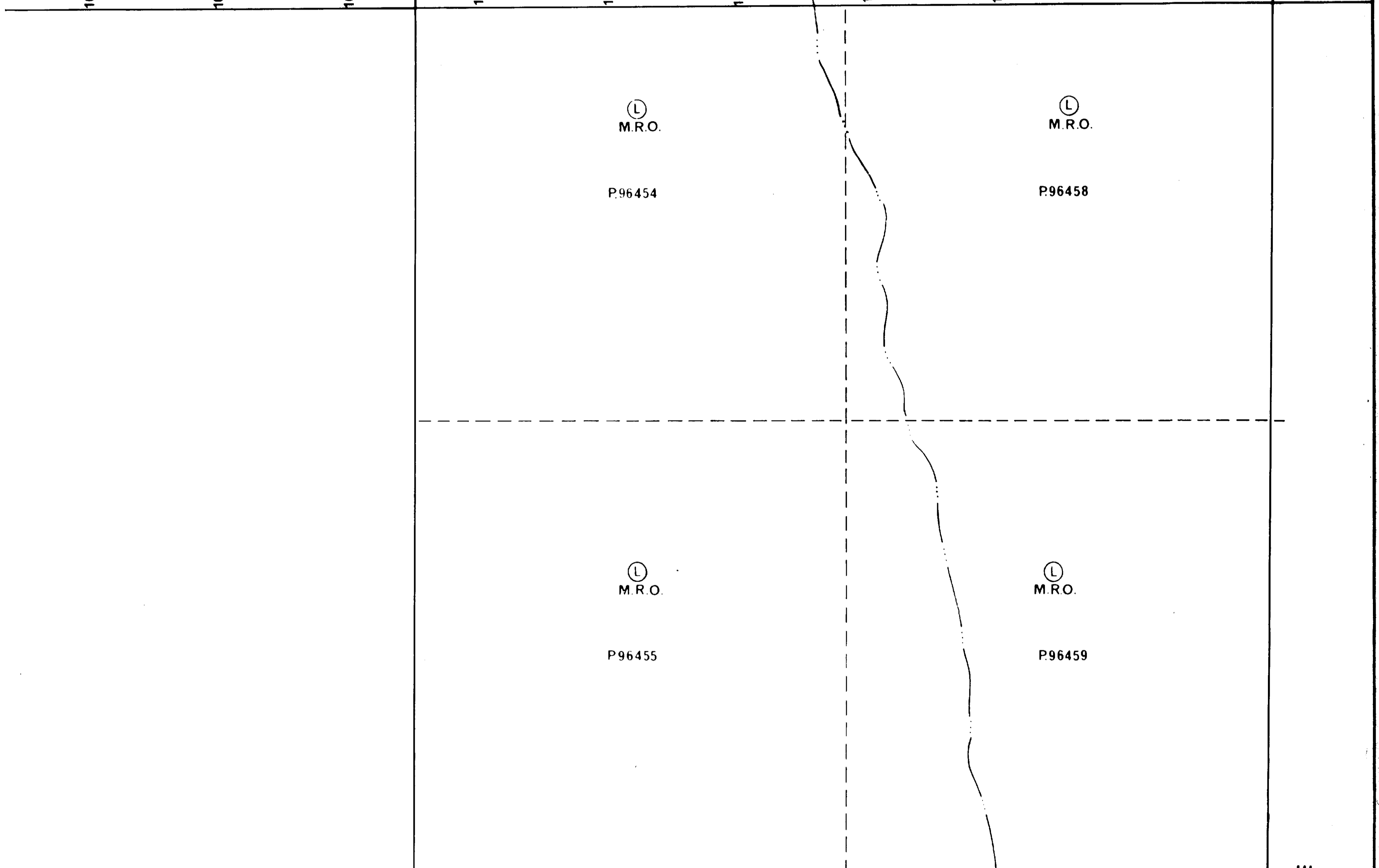
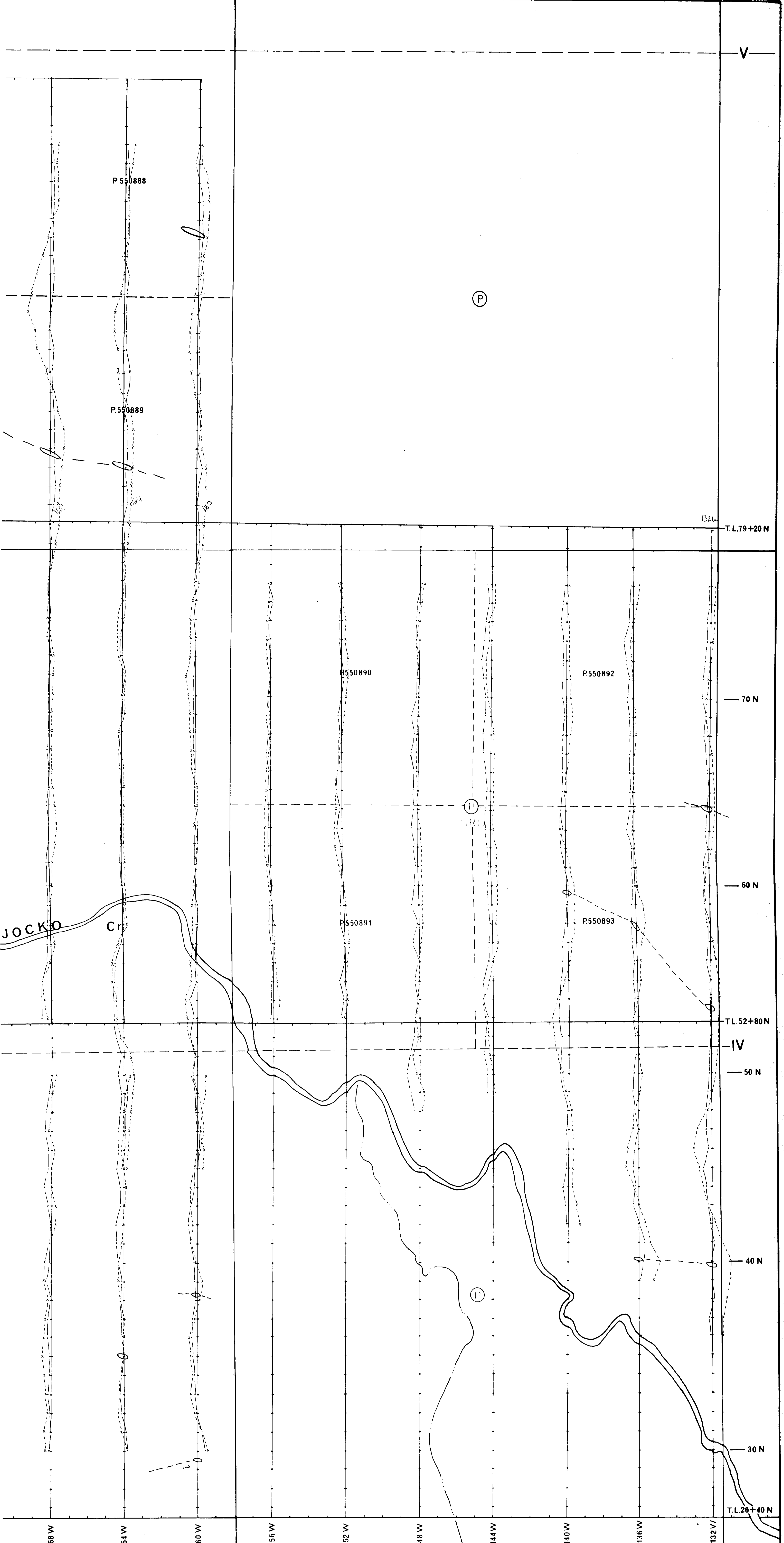
ROSARIO RESOURCES CANADA LTD.	
CARNEGIE TWP.	
MAXMIN I EM	1777 Hz
OPER. GEOEX LTD.	INST. Apex Parametrics MaxMin II
SCALE: 1" = 200'	DATE: OCT. - NOV. 1980



8

W. J. ...

ROSARIO RESOURCES CANADA LTD.	
CARNEGIE TWP.	
MAXMIN II EM 888 Hz	
OPER. GEOEX LTD.	INST. Apex Parametrics MaxMin II
SCALE 1" = 200'	DATE OCT. - NOV. 1980



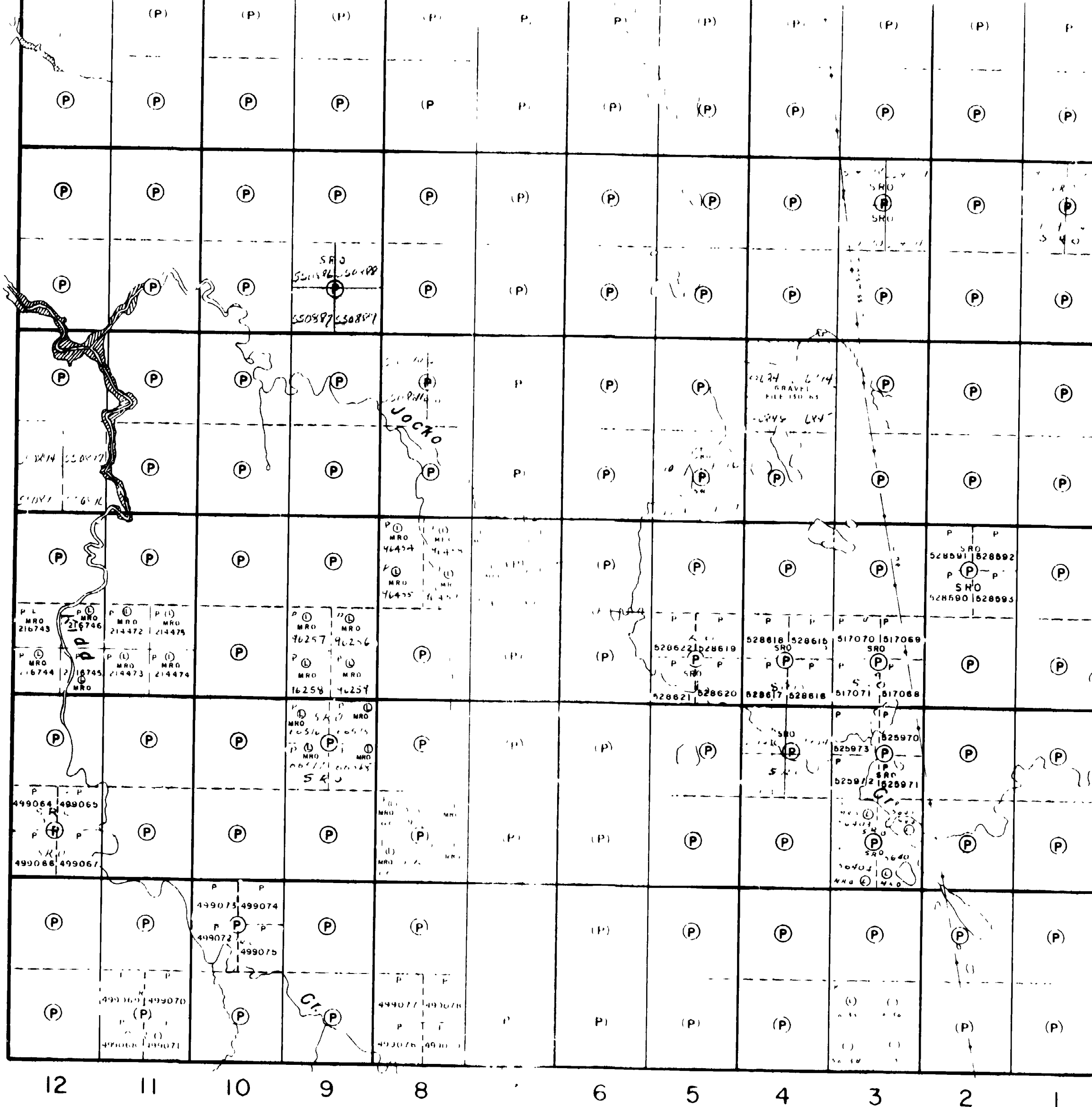
8

ROSARIO RESOURCES CANADA LTD. CARNEGIE TWP.	
MAXMIN II EM 444 Hz	
OPER : GEOEX LTD.	INST : Apex Parametrics MaxMin II
SCALE : 1" = 200'	DATE : OCT. - NOV. 1986

23700 0
184

CARNEGIE TWP

Reid Twp.



VI
V
IV
III
II
I
Prosser Twp.

CARNEGIE

DISTRICT OF COCHRANE
PORCUPINE MINING DIVISION
SCALE: 1-INCH=40 CHAINS

LEGEND

- PATENTED LAND (P)
- CROWN LAND SALE (CS)
- LEASES (L)
- LOCATED LAND (Loc)
- LICENSE OF OCCUPATION (L.O)
- ROADS
- IMPROVED ROADS
- RAILWAYS
- POWER LINES
- MARSH OR MUSKEG

NOTES

L.O. 1344 shown thus

400 Surface rights reservation around all lakes and rivers

800

Location Map
1" = 1/2 mile

APR 16 1981

PLAN NO --M-441

ONTARIO
MINISTRY OF NATURAL RESOURCES

CARNEGIE TWP

144

k Twp.