

63-1972



42A14SW0473 63.1972 LUCAS

SCOPE

010

REPORT
ON
GEOPHYSICAL SURVEYS
IN
LUCAS TOWNSHIP
TIMMINS AREA
PORCUPINE MINING DIVISION
ONTARIO
FOR
CHANCE MINES LIMITED

I INTRODUCTION

Magnetic and electromagnetic surveys were carried out over a group of eight (8) unpatented mining claims in the southwest portion of Lucas Township. The magnetic survey was to assist in outlining rock units particularly basic and ultrabasic rocks. The electromagnetic survey was employed to locate conductive sulphide deposits although the overburden in this area is considered very heavy. Very little is known of the bedrock geology.

II PROPERTY LOCATION AND ACCESS

The property is comprised of eight (8) unpatented mining claims as follows:

P-84743 - P-84746 inclusive (4 claims)
(4 claims being the north half of Lot 7, Con. 1)

P-84739 - P-84740 inclusive (2 claims)
P-84742 (1 claim)
P-84747 (1 claim)
(4 claims being the south half of Lot 6, Con. 1)

Access to the property was gained by means of truck and muskeg tractor.

III GEOPHYSICAL SURVEYS

The area is overburden covered likely to depths of 100 feet with glacial clay. Magnetic and vertical loop electromagnetic surveys were carried out over the property and grid lines spaced at 400 foot intervals running in a north-south direction.

Magnetic Survey

The magnetic survey was carried out in the field employing a fluxgate magnetometer with a sensitivity of 20 gammas per scale division and a readability of 5 gammas. The station interval for this survey work was 100 feet with 50 foot readings taken in anomalous areas. The results of

the survey are plotted on a 200 scale map and contoured at appropriate contour intervals.

Electromagnetic Survey

The electromagnetic survey was carried out employing a vertical loop dip angle survey technique. The transmitter was in a fixed location as indicated by the triangle. The traverses were run with the receivers along adjacent lines recording the dip angles. The results for two frequencies are 1000 CPS and 5000 CPS and plotted in solid and broken profile lines. The conductor axes are marked according to the legend; the zones alphabetically.

Discussion of the Geophysical Results

Two magnetic anomalies occur on the property; one at approximately 800 north on Line 4 W extending westward to Line 16 W, and the second magnetic anomaly across the centre of the south half of Lot 6, Concession 1 extending from Line 26 E to Line 4 E with a peak value at 18 + 00 S. The magnetic anomalies are typical of those occurring over basic ultrabasic intrusives in this area. This should be considered when outlining a further exploration programme. The electromagnetic zones (three in number) are discussed below in detail.

Zone A:

Zone A was traced from Line 12 E to the eastern boundary on Line 26 E. Throughout its length it follows the north flank of the magnetic anomaly. This zone appears to dip to the north and it is recommended that it be diamond drilled preferably to cut the conductor axis on Line 20 E. The hole should extend to traverse the peak of the associated magnetic anomaly.

Zone B:

Zone B was traced from Line 0 to Line 20 E and likely extends off the property in both directions. It appears as a weak anomaly with some width on Line 16. There is no magnetic correlation and at the present time; such an anomaly should be of secondary priority.

Zone C:

Zone C occurs on the north flank of the northern magnetic anomaly and is a weak zone that extends from Line 12 W to Line 4 W. Little is known of its character from the electromagnetic profile but it could be sampled at the same time the weak magnetic anomaly is tested. Examination of Zone C and associated magnetic anomaly should await the results of drilling on Zone A.

IV CONCLUSIONS AND RECOMMENDATIONS

The magnetic and electromagnetic surveys located two magnetic anomalies and three electromagnetic conductive zones. The magnetic anomalies are typical of those lying over basic ultrabasic intrusives in the area and the electromagnetic conductive zones appear to correspond to or parallel with these magnetic zones. Zone A and the associated magnetic anomaly are the most impressive anomalies of the survey. It is recommended that Zone A and the associated magnetic anomaly to the south be diamond drilled on Line 20 E to cut the conductor axes and extend on into the magnetic anomaly.

Respectfully submitted,

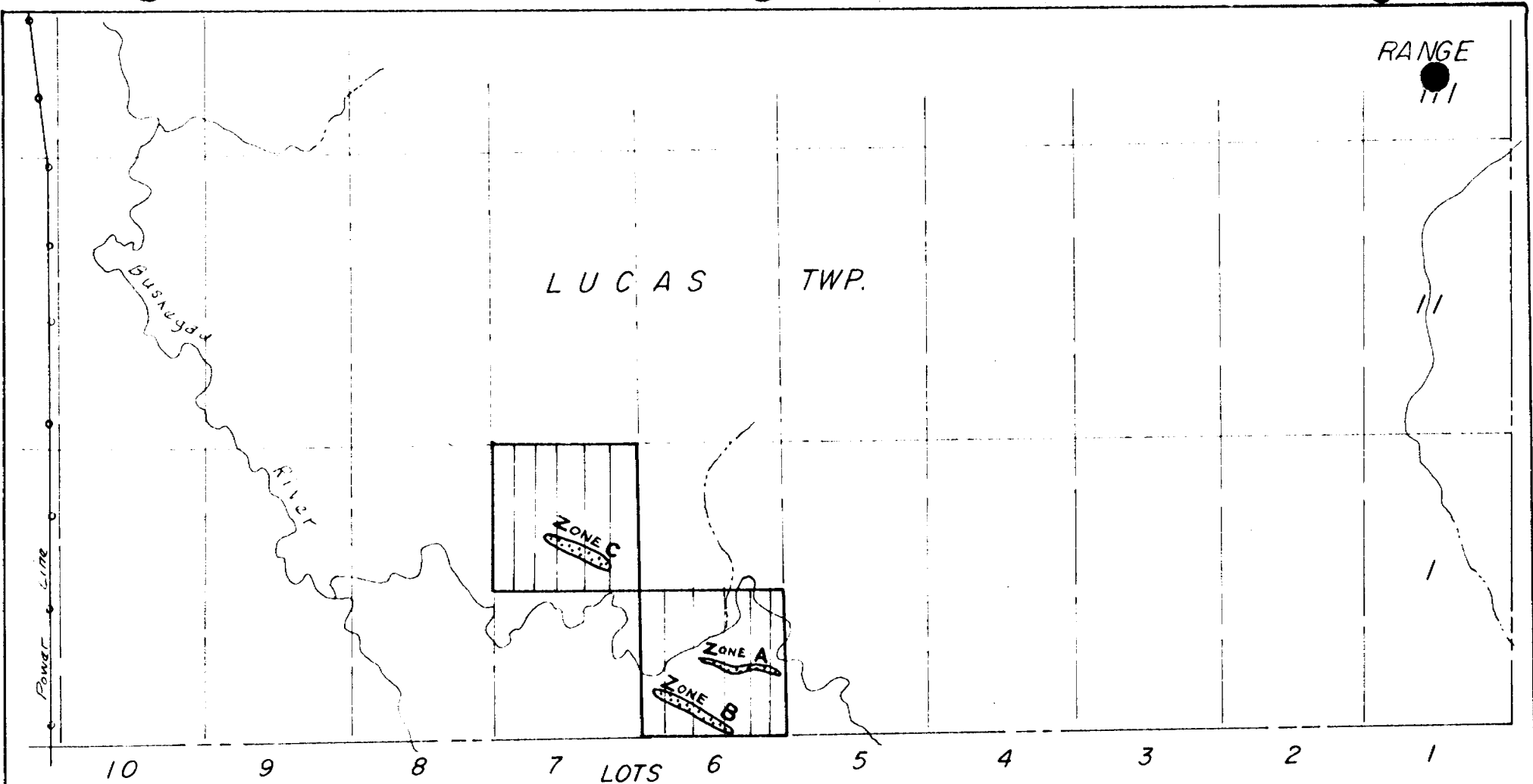
SCOPE MINING & EXPLORATION
CONSULTANTS LIMITED



T. R. Gledhill, P. Eng.,
Geophysicist

Toronto, Ontario
May, 1966

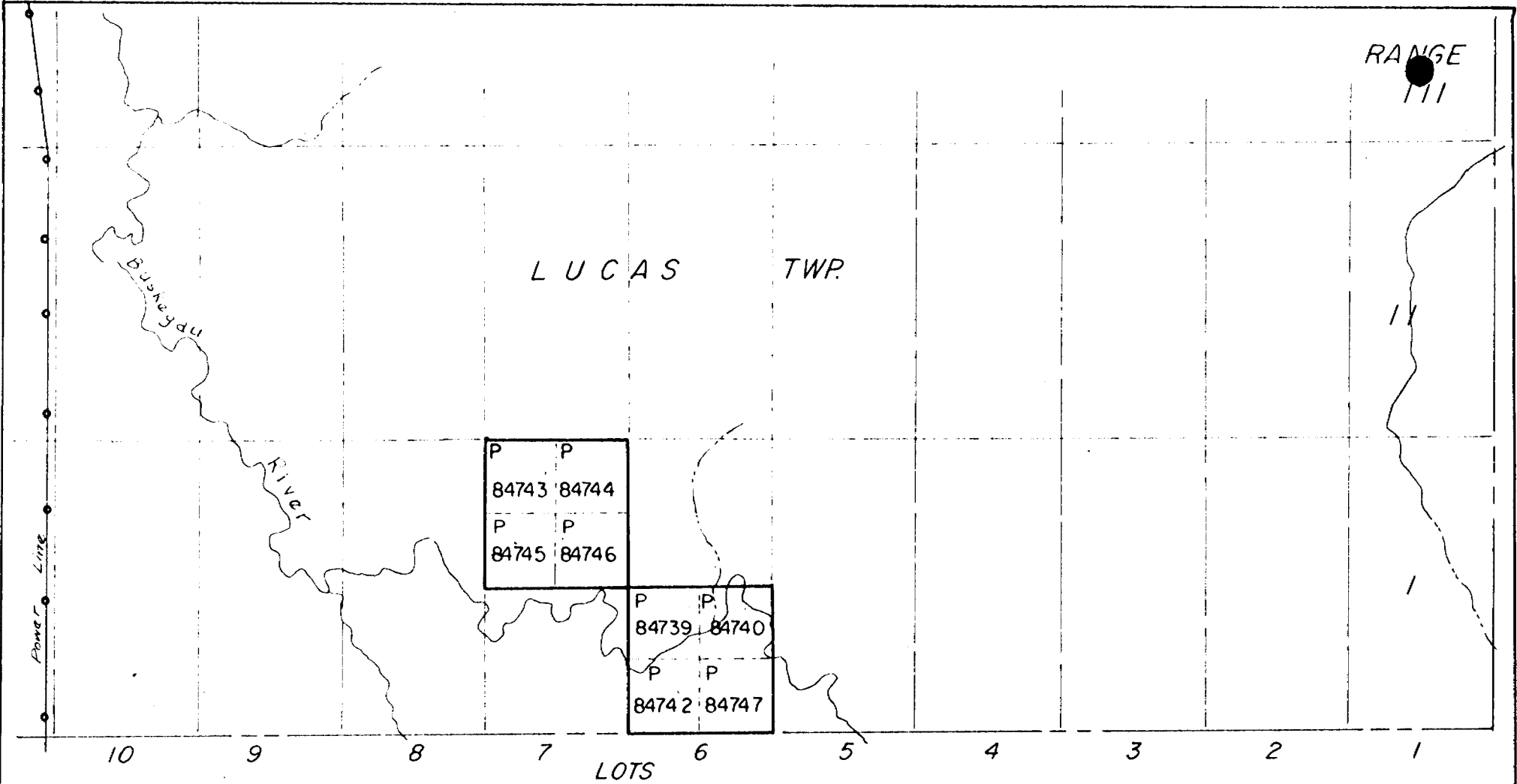




SUMMARY PLAN
 CONWEST EXPLORATION
 COMPANY LIMITED

LUCAS TOWNSHIP

Scale: 1"=1/2m.



CLAIMS PLAN
**CONWEST EXPLORATION
 COMPANY LIMITED**

LUCAS TOWNSHIP

Scale: 1" = 1/2 m.

R. 63. 1972

163

OFFICE OF MINING RECORDS



42A14SW0473 63.1972 LUCAS

LUPINE MINING DIVISION

127 THIRD AVENUE
TIMMINS, ONTARIO

900

June 28th, 1966

Mr. R. V. Scott,
Director,
Mining Lands Branch,
Ontario Department of Mines,
Parliament Buildings,
Toronto 2, Ontario

Dear Sir:

Re: Mining Claims P-84739-40[✓],
P-84742-47[✓] incl.

An assessment work credit of 43.8 days, geophysical, was recorded on each of the above mining claims on June 24th.

These claims are recorded in the name of Chance Mining and Exploration Company Limited, Suite 1001, 85 Richmond Street West, Toronto 1, Ontario.

The reports and maps are being forwarded direct to the Department.

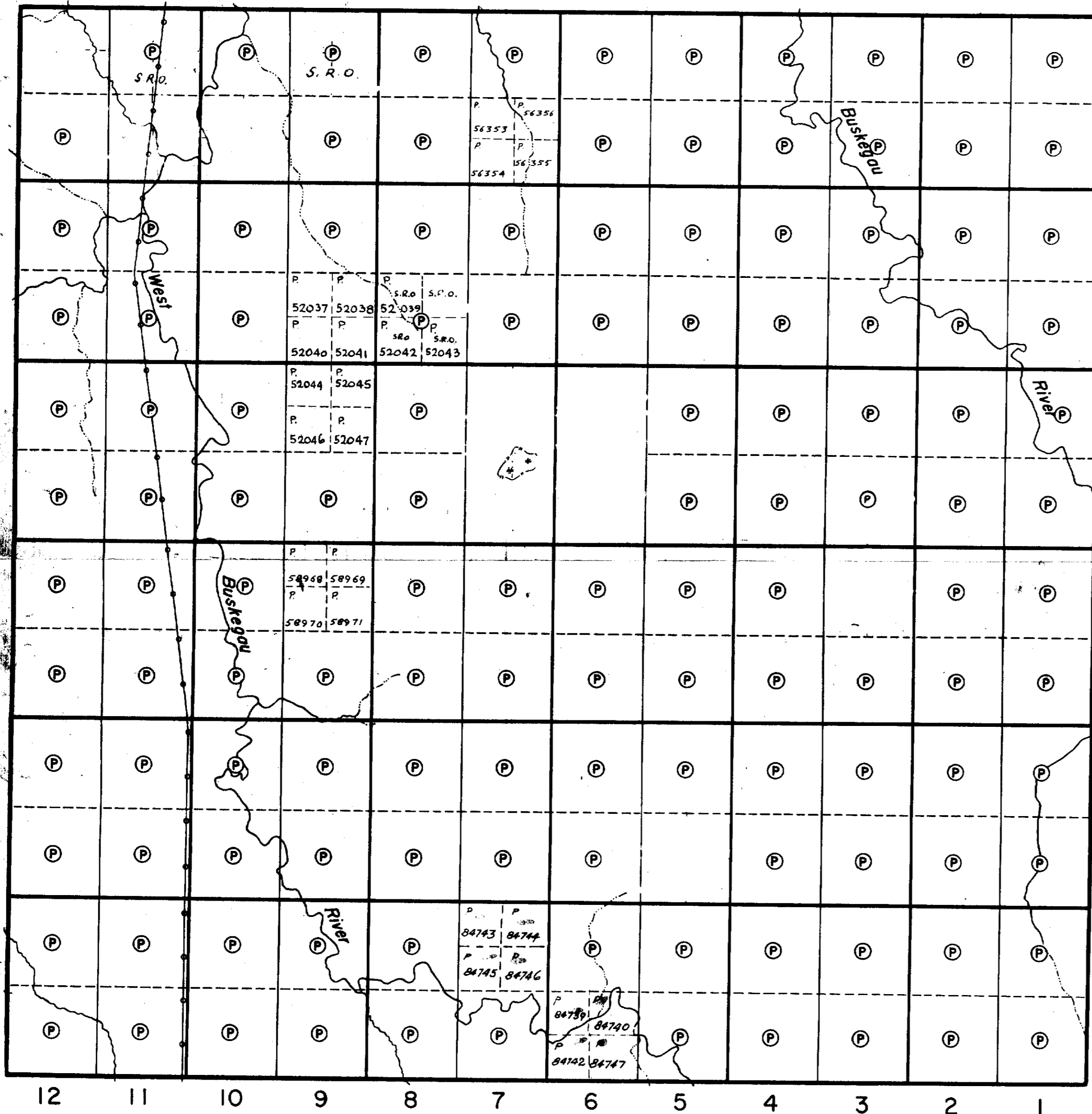
Yours very truly,

R. J. Simick,
Acting Mining Recorder.

/jt



Beck Twp.



Prosser Twp.

VI

V

IV

III

II

I

Duff Twp.

THE TOWNSHIP OF

LUCAS

DISTRICT OF COCHRANE

PORCUPINE MINING DIVISION

SCALE: 1-INCH=40 CHAINS

LEGEND

- PATENTED LAND Ⓟ
- CROWN LAND SALE C.S.
- LEASES Ⓞ
- LOCATED LAND Loc.
- LICENSE OF OCCUPATION L.O.
- ROADS
- IMPROVED ROADS
- RAILWAYS
- POWER LINES
- MARSH OR MUSKEG

NOTES

400' Surface Rights Reservation around all Lakes and Rivers.

DATE OF ISSUE
 NOV 17 1966
 ONTARIO DEPT. OF MINES

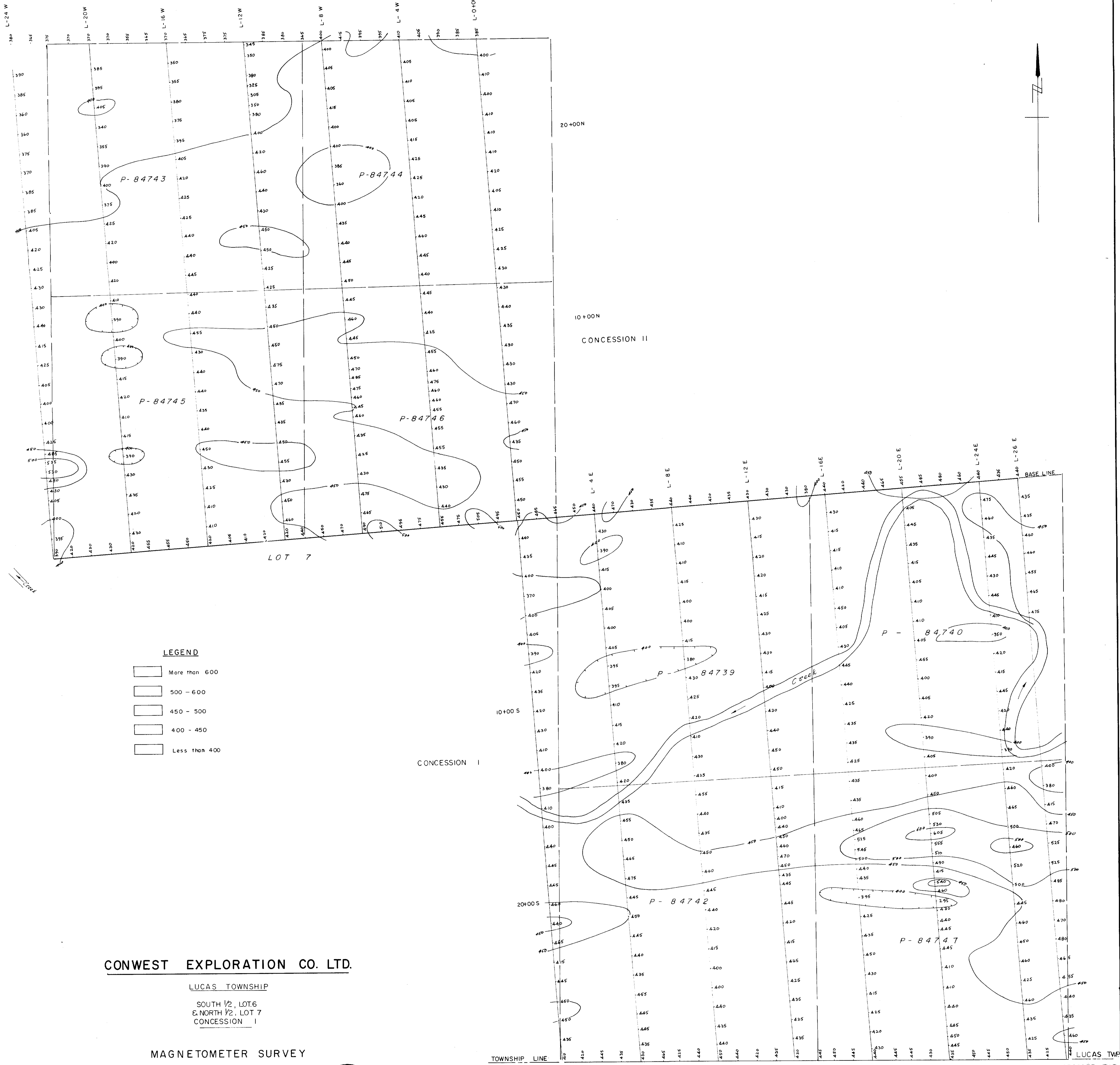
ONT. DEPT. OF MINES
 MINING LANDS BR.
 THIS MAP FOR CHECKING
 PURPOSES ONLY - MUST
 NOT BE SOLD.

PLAN NO. - M-537

DEPARTMENT OF MINES
— ONTARIO —

J.G.





LEGEND

- More than 600
- 500 - 600
- 450 - 500
- 400 - 450
- Less than 400

CONWEST EXPLORATION CO. LTD.

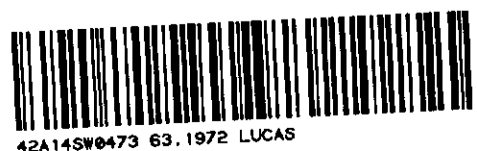
LUCAS TOWNSHIP

SOUTH 1/2, LOT 6
E. NORTH 1/2, LOT 7
CONCESSION I

MAGNETOMETER SURVEY

READINGS IN GAMMAE

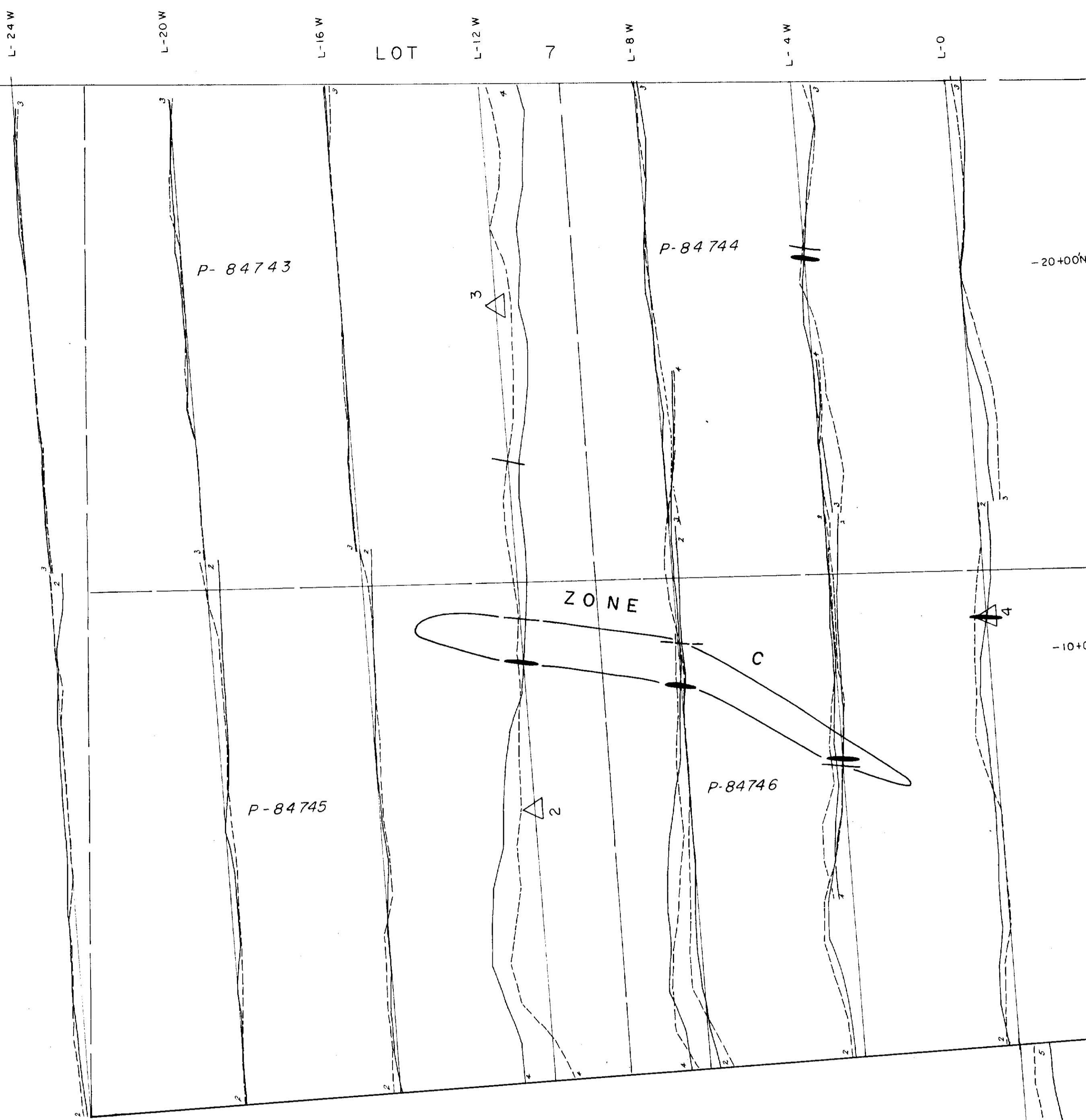
SCALE: 1" = 200'



210
63.1972

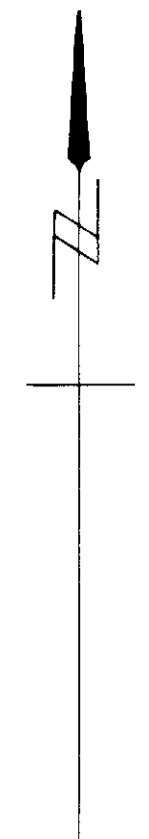
SCOPE CONSULTANTS

LUCAS TWP
PROSSER TWP



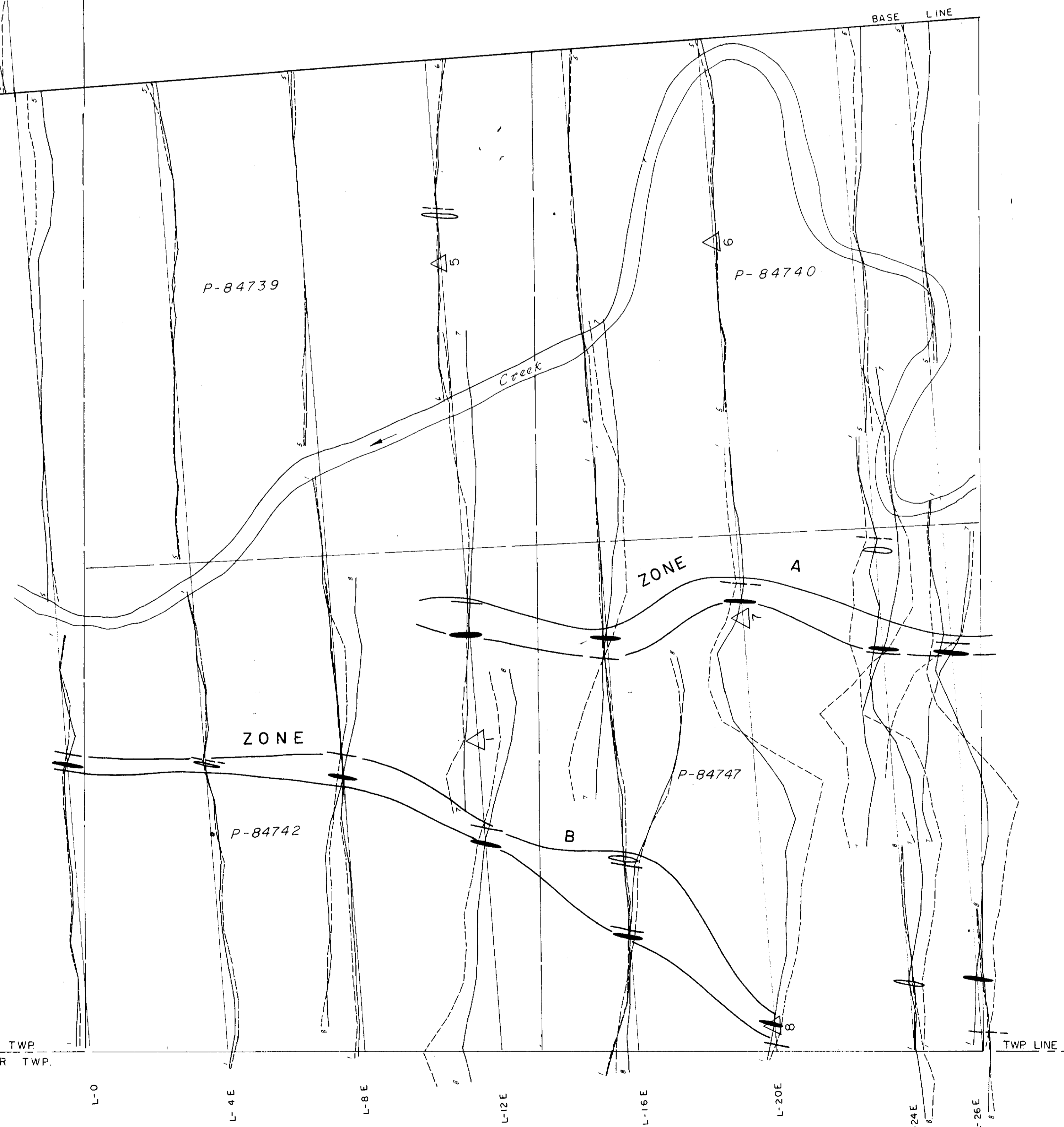
CONCESSION II

LOT 8



CONCESSION I

- LEGEND**
- CONDUCTOR AXIS
 - POSSIBLE AXIS
 - 1000 C.P.S. CURVES
 - 5000 C.P.S. CURVES
 - TRANSMITTER LOCATION



CONWEST EXPLORATION CO. LTD.

LUCAS TOWNSHIP

SOUTH 1/2, LOT 6
E. NORTH 1/2, LOT 7
CONCESSION I

ELECTROMAGNETIC SURVEY

SCALE: 1" = 200'
1" = 20° DIP.



220

63.1972

LUCAS TWP.
PROSSER TWP.

SCOPE CONSULTANTS