

Diamond Drilling



42A15SE0030 13 EDWARDS

010

Township of EDWARDS

Report No: 13

Work performed by: Great Bear Silver Mines Limited

Claim No	Hole No	Footage	Date	Note
L 373534	74-1	495'	Aug/74	(1) (2)
L 373531	74-2	497'	Sept/74	(1) (2)
L 373553	74-3	486'	Sept/74	(1) (2)
L 373522	74-4	408'	Sept/74	(1) (2)
		<u>1886'</u>		

Notes:

(1) #327/74

(2) For further information see File 63,3405

Twp.

Edwards  
Twp  
M 469.



VI

V

IV

III

II

SC

Wesley Twp.

PAT  
CRO  
LEA  
LOC  
LIC  
ROA  
IMP  
RAI  
POV  
MAI

Abit  
Road

Abit  
Line

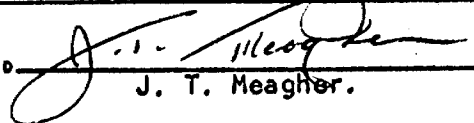
400  
river

# 327/74 Edwards Twp

# DIAMOND DRILL RECORD

PROPERTY GREAT BEAR SILVER MINES LIMITED-Edwards Township, Ontario. HOLE No. 74-1  
 SHEET NUMBER 1 of 5 Sheets SECTION FROM TO STARTED 22 Aug. 1974  
 LATITUDE L-180+35S LOCATION - Approx. 950' West & 850'S COMPLETED Sept. 1st 1974  
 DEPARTURE 2 + 00W BEARING N 45° E ULTIMATE DEPTH 495'  
 ELEVATION DIP Collar - 55°, 120' - 53° (TRUE) PROPOSED DEPTH 500'

DEPTH FEET	FORMATION	SAMPLE NO.	FROM	TO	WIDTH	ASSAY VALUES		
0 - 84'	Pipe & Casing (Pulled) Mud.							
84 - 97.5	Medium grained, Massive (Questionable Gabbro). Non magnetic, odd Carb. QTZ. Stringer containing coarse cube PY. - TR. Fine Dissem. PY in Gabbro - last 3' finer grained, contact ground.							
97.5-147	Intermediate volc. flows - A fairly fine grained gray cherty texture - sections finely banded, at 55° to core - Low in fracturing, mostly massive. (a) 124.3 irregular stringer $\frac{1}{4}$ " <sup>+</sup> of massive magnetic PYRR. containing trace Chalco.							

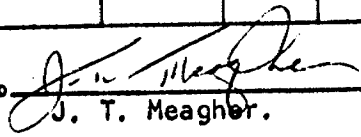
DRILLED BY Dominik Drilling Foreman - Gilles Grondin. SIGNED  J. T. Meagher.

# DIAMOND DRILL RECORD

PROPERTY Great Bear Silver Mines Limited-Edwards Township, Ontario HOLE No. 74-1  
 SHEET NUMBER 2 SECTION FROM ..... TO ..... STARTED .....  
 LATITUDE ..... DATUM ..... COMPLETED .....  
 DEPARTURE ..... BEARING ..... ULTIMATE DEPTH .....  
 ELEVATION ..... DIP ..... PROPOSED DEPTH .....

DEPTH FEET	FORMATION	SAMPLE NO.	FROM	TO	WIDTH	ASSAY VALUES		
	From 133' the odd fine dissem. streak							
	Py., Pyrr, minor chalco. Often associated with fine carb. Qtz. stringers.							
147-194.2	Sim. Above but with the addition of bands of black siltstone, partly graphitic, and 5% <sup>+</sup> streaks cube							
TURAM MEDIUM E.M. ANOMALY	Py., minor pyrrhotite. enough to make siltstone bands magnetic.							
	Section 147'-163 about 10% black bands. Section 163-175' is 80% black bands not too high in graphite..							
	3-5% fine bands dissem. Py. 70% , Pyrr 30% Tr. Chalco. Minor distortion							

DRILLED BY Dominik Drilling  
Foreman - Gilles Grondin.

SIGNED   
J. T. Meagher.

# DIAMOND DRILL RECORD

PROPERTY Great Bear Silver Mines Limited-Edwards Township, Ontario HOLE No. 74-1

SHEET NUMBER 3 SECTION FROM \_\_\_\_\_ TO \_\_\_\_\_ STARTED \_\_\_\_\_

LATITUDE \_\_\_\_\_ DATUM \_\_\_\_\_ COMPLETED \_\_\_\_\_

DEPARTURE \_\_\_\_\_ BEARING \_\_\_\_\_ ULTIMATE DEPTH \_\_\_\_\_

ELEVATION \_\_\_\_\_ DIP \_\_\_\_\_ PROPOSED DEPTH \_\_\_\_\_

DEPTH FEET	FORMATION	SAMPLE NO.	FROM	TO	WIDTH	ASSAY VALUES		
	and some carb Qtz veinlets.							
175-194	About 25% smaller well mixed in blackbands containing about 3% fine stringers sulphides but 70% Pyrr.							
	30% Py. Low in graphite, minor chalco.							
147-194.2	Continued.							
	Best section 188.0 - 188.8 containing 15% <sup>±</sup> fine disseminated streaks Pyrr.							
	Some Py and $\frac{1}{4}$ % Cu.							
194.2-495	Sharp contact @ 60° with light green softer andesite - odd minor light banding @ 60% to core - irregular stringers carb. - Qtz, making up 5 - 10% of core only odd trace Py, Pyrr							

DRILLED BY \_\_\_\_\_

SIGNED \_\_\_\_\_

# DIAMOND DRILL RECORD

PROPERTY Great Bear Silver Mines Limited - Edwards Twp., Ontario HOLE No. 74-1  
 SHEET NUMBER 4 SECTION FROM \_\_\_\_\_ TO \_\_\_\_\_ STARTED \_\_\_\_\_  
 LATITUDE \_\_\_\_\_ DATUM \_\_\_\_\_ COMPLETED \_\_\_\_\_  
 DEPARTURE \_\_\_\_\_ BEARING \_\_\_\_\_ ULTIMATE DEPTH \_\_\_\_\_  
 ELEVATION \_\_\_\_\_ DIP \_\_\_\_\_ PROPOSED DEPTH \_\_\_\_\_

DEPTH FEET	FORMATION	SAMPLE NO.	FROM	TO	WIDTH	ASSAY VALUES		
	-198' - 208' & 215' - 221.5' - Lens?							
	of medium grained massive gabbro?							
	(Sim. 84-975) contacts graditional							
	473'-479' - similar Gabbro but one							
	sharp contact @ 60°							
	-230.5 - 232.7 - 5-10% irregular							
	blebs and streaks of Pyrr in flowage							
	section - TR, PY, Minor traces of							
	chalco and honey Spalerite.							
	From 233' - Greenish gray pretty massive							
	andesite. Only scattered weak stringers							
	and injections of Carb. QTZ containing							
	the odd trace of Pyrr, Py, Chalco.							
	Trace banding mostly indistinct.							

DRILLED BY \_\_\_\_\_ SIGNED *J. H. McQueen*

# DIAMOND DRILL RECORD

PROPERTY Great Bear Silver Mines Limited, Edwards Twp., Ontario HOLE No. 74-1

SHEET NUMBER 5 SECTION FROM ..... TO ..... STARTED.....

LATITUDE ..... DATUM ..... COMPLETED.....

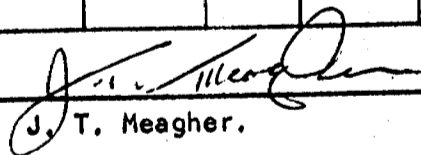
DEPARTURE ..... BEARING ..... ULTIMATE DEPTH.....

ELEVATION ..... DIP ..... PROPOSED DEPTH.....

DEPTH FEET	FORMATION	SAMPLE NO.	FROM	TO	WIDTH	ASSAY VALUES		
	From 280' - running about a dozen hairline to 1/4" carb. Qtz. stringers per 5', low in sulphides.							
	From 320' a bit red staining? in Carb. Qtz and minor epidote developed and some indications of squeezing. Core pretty massive.							
	From 400' massive. More Epidote and red staining of Carb. Qtz -What few sulphides present is as fine Cube Py. Almost no banding or jointing planes.							
	Core Recovery <span style="float: right;">99.9%</span>							

DRILLED BY Dominik Drilling.  
Foreman - Gilles Grondin

SIGNED

  
J. T. Meagher.

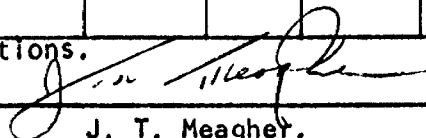
# DIAMOND DRILL RECORD

**PROPERTY** Great Bear Silver Mines Limited-Edwards Township, Ontario 74-2  
**HOLE No.** .....  
**SHEET NUMBER** 1 of 6 sheets **SECTION FROM** Location Approx. 1100' **TO** West & 330' S. of C.P. 1-373531 **STARTED** Sept. 4th 1974  
**LATITUDE** L-180+00S **DATUM** ..... **COMPLETED** .....  
**DEPARTURE** 21+90 East **BEARING** N - 45° E **ULTIMATE DEPTH** 497'  
**ELEVATION** ..... **DIP** Collar 55°, 485' 47" (True) **PROPOSED DEPTH** 500'

DEPTH FEET	FORMATION	SAMPLE NO.	FROM	TO	WIDTH	ASSAY VALUES		
0-113	Pipe and casing (Pulled) Mud.							
113-134	Peridotite - A dark gray assimilated fairly coarse crystalline structure - Quite magnetic, some stringers weak epidote and sericite, no sulphides.							
134-143	Gradual Transition to felsite - the darker rock forming minerals and magnetite gradually fading out.							
143-312	Syenite Gabbro" (Intrusive) - a fairly medium grained grayish green, massive rock, sections relatively							

Talcose - low in tension fractures, QIZ injections.  
 Dominik Drilling

**DRILLED BY** Foreman - Gilles Grondin.

**SIGNED**  J. T. Meagher.



# DIAMOND DRILL RECORD

PROPERTY Great Bear Silver Mines Limited HOLE No. 74-2

SHEET NUMBER 2 SECTION FROM ..... TO ..... STARTED .....

LATITUDE ..... DATUM ..... COMPLETED .....

DEPARTURE ..... BEARING ..... ULTIMATE DEPTH .....

ELEVATION ..... DIP ..... PROPOSED DEPTH .....

DEPTH FEET	FORMATION	SAMPLE NO.	FROM	TO	WIDTH	ASSAY VALUES		
143-312	Continued							
	-The odd very weak trace of Chalco- pyrite and Py.							
	Quartz carbonate stringers are few and far between.							
	- Around 200' a trace Py starting to appear - still non-magnetic and massive.							
	-283-286 Inclusion of fairly fine grained gray feldspathic. material, contacts gradational.							
	308-312 Porous water seam - scattered dissem. Carb. leached out.							
	- Around 300 - about 1" Qtz - Carb. stringer per 5' of core with the odd trace Py and chalco present							

DRILLED BY \_\_\_\_\_ SIGNED *[Signature]*

# DIAMOND DRILL RECORD

PROPERTY Great Bear Silver Mines Limited-Edwards Twp., Ontario HOLE No. 74-2  
 SHEET NUMBER 3 SECTION FROM ..... TO ..... STARTED .....  
 LATITUDE ..... DATUM ..... COMPLETED .....  
 DEPARTURE ..... BEARING ..... ULTIMATE DEPTH .....  
 ELEVATION ..... DIP ..... PROPOSED DEPTH .....

DEPTH FEET	FORMATION	SAMPLE NO.	FROM	TO	WIDTH	ASSAY VALUES		
312-333.5	-Gradually works into alteration zone. (312-326). Minor amount of scattered leached Carb. (326-333.5) increasing chloridization and leached carb. Minor traces Py, Pyrr, Chalco. A half dozen quartz stringers up to 6", They contain splashes of a black rock forming mineral (Non metallic) - No sulphides in Qtz veins.							
333.5-341.0	-Black siltstone and bands of gray and blk. mixed siltstone, banding at 5-20% fine disseminated seams py (Av 10% + Py), no other sulphides, black siltstone Partly graphitic - Sharp contacts - Core Recovery about 45% in this section - Loss due to soft rock and presence of water seam.							

TURAM MEDIUM E.M. ANOMALY

DRILLED BY \_\_\_\_\_

SIGNED \_\_\_\_\_

*[Handwritten Signature]*

# DIAMOND DRILL RECORD

PROPERTY Great Bear Silver Mines Limited-Edwards Twp., Ontario HOLE No. 74-2  
 SHEET NUMBER 4 SECTION FROM \_\_\_\_\_ TO \_\_\_\_\_ STARTED \_\_\_\_\_  
 LATITUDE \_\_\_\_\_ DATUM \_\_\_\_\_ COMPLETED \_\_\_\_\_  
 DEPARTURE \_\_\_\_\_ BEARING \_\_\_\_\_ ULTIMATE DEPTH \_\_\_\_\_  
 ELEVATION \_\_\_\_\_ DIP \_\_\_\_\_ PROPOSED DEPTH \_\_\_\_\_

DEPTH FEET	FORMATION	SAMPLE NO.	FROM	TO	WIDTH	ASSAY VALUES		
341-346	Transition zone - Pyrite and carbonates gradually fade out. Also schistose fades.							
346-451	Volcanic felsite - fairly similar to 143-312 a gray fine grained, Talcose, massive rock schistosity at 60° to core - scattered fine barren Qtz stringers, Rock non-magnetic and just about barren of sulphides except for the odd slickensided joint containing a Tr. of Py. Pyrr, Chalco							
	Sections 360-390, 413-450 coarser grained more massive felsite.							

DRILLED BY \_\_\_\_\_ SIGNED *J. L. [Signature]*

# DIAMOND DRILL RECORD

PROPERTY Great Bear Silver Mines Limited-Edwards Twp., Ontario HOLE No. 74-2

SHEET NUMBER 5 SECTION FROM ..... TO ..... STARTED .....

LATITUDE ..... DATUM ..... COMPLETED .....

DEPARTURE ..... BEARING ..... ULTIMATE DEPTH .....

ELEVATION ..... DIP ..... PROPOSED DEPTH .....

DEPTH FEET	FORMATION	SAMPLE NO.	FROM	TO	WIDTH	ASSAY VALUES		
451-462 <sup>±</sup>	Transition zone - rock fine grained more schistose - Trace water leached carbonate - The odd fine qtz stringers containing a trace Pyrr, Chalco.							
462-470 <sup>+</sup>	Fine grained black siltstone and mixed. Black siltstone and gray sericite schist About 60% core loss - Rust seams indicate water seams still present. A bit of graphite and less than 2% fine dissem Py. Banding at 60-70° to core.							
470-497	Transition zone - sim. 451 - 462 except							

WEAK CONDUCTOR NOT INDICATED ON E.M. MAP

DRILLED BY \_\_\_\_\_

SIGNED *J. H. Macgibbon*

# DIAMOND DRILL RECORD

PROPERTY Great Bear Silver Mines Limited -Edwards Twp., Ontario HOLE No. 74-2

SHEET NUMBER 6 SECTION FROM ..... TO ..... STARTED .....

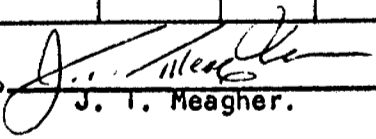
LATITUDE ..... DATUM ..... COMPLETED .....

DEPARTURE ..... BEARING ..... ULTIMATE DEPTH .....

ELEVATION ..... DIP ..... PROPOSED DEPTH .....

DEPTH FEET	FORMATION	SAMPLE NO.	FROM	TO	WIDTH	ASSAY VALUES		
	470-497' Continued, has about 25% of core distorted and							
	shattered re cemented with largely							
	hairlike seams of blk. siltstone							
	and some injected Qtz. - The odd							
	trace Py.							
	End of Hole 497'							
	Core Recovery - 96.8% (most of loss in							
	siltstone and Transition zones) softer							
	and contained water seams.							

DRILLED BY Dominik Drilling

SIGNED  J. I. Meagher.

# DIAMOND DRILL RECORD

PROPERTY Great Bear Silver Mines Limited-Edwards Twp., Ontario HOLE No. 74-3  
 SHEET NUMBER 1 of 5 SHEETS SECTION FROM Location Approx, 900 W. and 1250'S STARTED Sept. 13th 1974  
 LATITUDE 211+65 S on BL.#3 of C.P. #1 -373553. RAYON COMPLETED Sept. 22, 1974  
 DEPARTURE 24+90 SW. BEARING N-45° E ULTIMATE DEPTH 486'  
 ELEVATION \_\_\_\_\_ DIP 0+060°, 475' - 54° PROPOSED DEPTH \_\_\_\_\_

DEPTH FEET	FORMATION	SAMPLE NO.	FROM	TO	WIDTH	ASSAY VALUES		
	Note - Initial dip of hole 55° had to be abandoned at 106' when bottom of casing(deflected. off ledge?), Rods broke.							
0-147'	Casing - Mud, some small boulders and cemented gravel from 100'							
147-300	Grayish green massive, medium grained Gabbro(questionable, sim 84-97.5 DDH 74-1)							
	Trace flow structure, non magnetic -							
	Assimilated medium grained crystalline structure - Trace fine Py. - Odd small Qtz, stringer (Av-1 per 5' core), cont.							
	minor amounts py, Pyrr., Trace of chaldo.							

DRILLED BY \_\_\_\_\_

SIGNED \_\_\_\_\_

*J. J. Healy*

# DIAMOND DRILL RECORD

PROPERTY Great Bear Silver Mines Limited-Edwards Twp., Ontario HOLE No. 74-3  
 SHEET NUMBER 2 SECTION FROM \_\_\_\_\_ TO \_\_\_\_\_ STARTED \_\_\_\_\_  
 LATITUDE \_\_\_\_\_ DATUM \_\_\_\_\_ COMPLETED \_\_\_\_\_  
 DEPARTURE \_\_\_\_\_ BEARING \_\_\_\_\_ ULTIMATE DEPTH \_\_\_\_\_  
 ELEVATION \_\_\_\_\_ DIP \_\_\_\_\_ PROPOSED DEPTH \_\_\_\_\_

DEPTH FEET	FORMATION	SAMPLE NO.	FROM	TO	WIDTH	ASSAY VALUES		
	147-300 continued							
	-Section 193 - 197 - Qtz stringers carbonated.							
	201-205.5 Pink carbonate filling jointing plane.							
	Near parallel to core. - 2.9' ground core this section. Rock from 210-300 similar with some Qtz stringers but not low in sulphides.							
300-436.3	Graditlonal change to a finer grained rock with some gneissosity developed - Doesn't have Gabbro look. Classified as Volcanic Felsite fairly similar (346'-451'-74.2) Rock is more assimilated - Low in 1/8" Qtz stringers containing a trace sulphides. - from 355' gradually							

DRILLED BY \_\_\_\_\_ SIGNED *J. V. Neat*

# DIAMOND DRILL RECORD

PROPERTY Great Bear Silver Mines Limited-Edwards Twp., Ontario HOLE No. 74-3  
 SHEET NUMBER 3 SECTION FROM \_\_\_\_\_ TO \_\_\_\_\_ STARTED \_\_\_\_\_  
 LATITUDE \_\_\_\_\_ DATUM \_\_\_\_\_ COMPLETED \_\_\_\_\_  
 DEPARTURE \_\_\_\_\_ BEARING \_\_\_\_\_ ULTIMATE DEPTH \_\_\_\_\_  
 ELEVATION \_\_\_\_\_ DIP \_\_\_\_\_ PROPOSED DEPTH \_\_\_\_\_

DEPTH FEET	FORMATION	SAMPLE NO.	FROM	TO	WIDTH	ASSAY VALUES		
300-436.3	continued							
	starting to show a little flow structure.							
	@ 362' (core Block) - 6" carb. and wall							
	rock Breccia banding (weak) around 40°							
	60° to core - odd fine streak semi							
	siltstone appearing.							
	From 368 rock is finer grained and color							
	is much grayer with a light green tinge							
	-Numerous fine threads Blk. semi silt-							
	stone in flow planes - Low in Qtz and							
	sulphides.							
436.3-454	Start of layered bands of contorted							
	black siltstone - largely about 2"							
	thick but one of 2.5 feet wide. W.R.							
	similar above.							

DRILLED BY \_\_\_\_\_ SIGNED J. S. [Signature]



# DIAMOND DRILL RECORD

PROPERTY Great Bear Silver Mines Limited-Edwards Twp., Ontario HOLE No. 74-3  
 SHEET NUMBER 4 SECTION FROM \_\_\_\_\_ TO \_\_\_\_\_ STARTED \_\_\_\_\_  
 LATITUDE \_\_\_\_\_ DATUM \_\_\_\_\_ COMPLETED \_\_\_\_\_  
 DEPARTURE \_\_\_\_\_ BEARING \_\_\_\_\_ ULTIMATE DEPTH \_\_\_\_\_  
 ELEVATION \_\_\_\_\_ DIP \_\_\_\_\_ PROPOSED DEPTH \_\_\_\_\_

DEPTH FEET	FORMATION	SAMPLE NO.	FROM	TO	WIDTH	ASSAY VALUES		
436.3-454	Continued.							
	In the section about 45% (Blk. Siltstone mixed with some fine grained gray quartzite) and 5-10% fine dissem. Py and some fine carb. Qtz stringers - short sections 25-50% Pyrite - Some of the Py is present as blebs Py(fractured and recemented by Qtz - Minor Py in Adjoining W.R. Section non-magnetic and not high in graphite and fairly similar (97.5-147')	47-1.						
454'-486	- Semi Rhyolite - Rock is a little more cherty side, non magnetic, odd bit fine cube Py. and a trace Pyrr. and chalco. Only odd trace Blk. siltstone and							

DRILLED BY \_\_\_\_\_ SIGNED *[Signature]*

# DIAMOND DRILL RECORD

PROPERTY Great Bear Silver Mines Limited-Edwards Township, Ontario HOLE No. 74-3

SHEET NUMBER 5 SECTION FROM \_\_\_\_\_ TO \_\_\_\_\_ STARTED \_\_\_\_\_

LATITUDE \_\_\_\_\_ DATUM \_\_\_\_\_ COMPLETED \_\_\_\_\_

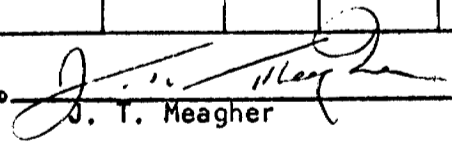
DEPARTURE \_\_\_\_\_ BEARING \_\_\_\_\_ ULTIMATE DEPTH \_\_\_\_\_

ELEVATION \_\_\_\_\_ DIP \_\_\_\_\_ PROPOSED DEPTH \_\_\_\_\_

DEPTH FEET	FORMATION	SAMPLE NO.	FROM	TO	WIDTH	ASSAY VALUES		
454'-486'	Continued							
	odd carbonate Qtz stringer, minor movement.							
	@ 478 - 8 Inch granite Qtz. stringer with several very light creamish green, soft, crystals.							
	Last 8' of Core quite massive.							
	END OF HOLE 486'							
	CORE RECOVERY. 98.7%							

DRILLED BY Dominik Drilling

SIGNED

  
J. T. Meagher

# DIAMOND DRILL RECORD

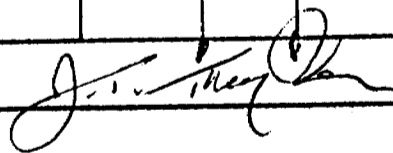
**PROPERTY** Great Bear Silver Mines Limited, Edwards Twp., Ontario **HOLE No.** 74-4  
**SHEET NUMBER** 1 of 6 sheets **SECTION FROM** Location Approx. 450' West and 575' **TO** **STARTED** Sept. 28th, 1974  
**LATITUDE** L - 108 South **BATHY** South of C.P.-1-373522 **COMPLETED** Oct. 6th, 1974  
**DEPARTURE** 3+25' N.E. **BEARING** N - 45° E **ULTIMATE DEPTH** 408'  
**ELEVATION** **DIP** 0°-45° - 300' - 46° **PROPOSED DEPTH** 400'

DEPTH FEET	FORMATION	SAMPLE NO.	FROM	TO	WIDTH	ASSAY VALUES		
	<u>NOTE</u>							
	Outcrop Gabbro(magnetic) 1+75'-2+35' N. E.							
	on 1-108S. Also outcrops volcanics on							
	L-112S.							
0- 21'	Casing - Mud boulders last 3 feet							
21- 21.7	Coarse gray Gr. - Float boulder?							
21.7-67.5	Greenish partly grey partly sillicous							
	semi basic volcanic flows, banding at							
	50° - 60° to core. Some epipote and							
	hydrothermal alteration present. Rock							
	mostly fine grained and sections of							
	core fairly magnetic - some fine							
	disseminated Py, low in Qtz stringers.							
	24-24.5 - Vein pink feldspathic Gr							

its still boulder float.

DRILLED BY \_\_\_\_\_

SIGNED \_\_\_\_\_



# DIAMOND DRILL RECORD

PROPERTY | Great Bear Silver Mines Limited ..... HOLE No. 74-4

SHEET NUMBER 2 ..... SECTION FROM ..... TO ..... STARTED .....

LATITUDE ..... DATUM ..... COMPLETED .....

DEPARTURE ..... BEARING ..... ULTIMATE DEPTH .....

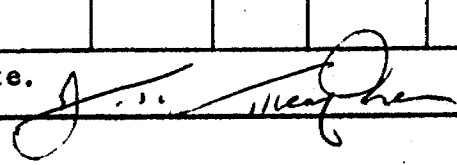
ELEVATION ..... DIP ..... PROPOSED DEPTH .....

DEPTH FEET	FORMATION	SAMPLE NO.	FROM	TO	WIDTH	ASSAY VALUES		
21.7 - 67.5	Continued 62'-67.5 Sharp contacts @ 20° with band pale, green mylonized volc.							
67.5 - 73.6	Diabase Dike-band quite magnetic Dark gray fine grained intrusive - Trace fine Py. - sharp irregular contacts.							
73.6 - 81'	Semi basic volc sim. 22' - 67.5							
81 - 159	Gradually grades into a coarse grained gabbro, by 93' has the appearance of a coarse assimilated flow type of crystalli- zation - Low in both magnetite and Py. The odd small feldspathic Qtz. Stringer with a weak trace chalcopyrite.							

Minor alteration last 5'; development of epidote.

DRILLED BY \_\_\_\_\_

SIGNED \_\_\_\_\_



# DIAMOND DRILL RECORD

**PROPERTY** Great Bear Silver Mines Limited - Edwards Twp., Quebec **HOLE No.** 74-4  
**SHEET NUMBER** 3 **SECTION FROM** ..... **TO** ..... **STARTED** .....  
**LATITUDE** ..... **DATUM** ..... **COMPLETED** .....  
**DEPARTURE** ..... **BEARING** ..... **ULTIMATE DEPTH** .....  
**ELEVATION** ..... **DIP** ..... **PROPOSED DEPTH** .....

DEPTH FEET	FORMATION	SAMPLE NO.	FROM	TO	WIDTH	ASSAY VALUES		
159 - 172.5	Diabase Dike (sim. 67.5 - 73.6) quite magnetic, irregular contacts @ 35°							
172.5-199.7	Gabbro (Sim. 81-159) First three Ft. shows alteration & development of Epidote, 1" seam diabase @175.4 - odd small stringer feldspathic - Qtz. with minor Py trace chalco. Gabbro pretty well barren of magnetite & Py.							
199.7-284	Basic volc. flow sharp contact @30° with partly banded alternate layers of green and a black flows.							

DRILLED BY \_\_\_\_\_

SIGNED \_\_\_\_\_

*Joe Meagle*

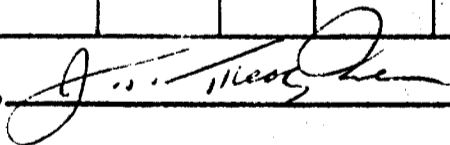
# DIAMOND DRILL RECORD

PROPERTY Great Bear Silver Mines Limited- Edwards Twp., Quebec HOLE No. 74-4  
 SHEET NUMBER 4 SECTION FROM ..... TO ..... STARTED .....  
 LATITUDE ..... DATUM ..... COMPLETED .....  
 DEPARTURE ..... BEARING ..... ULTIMATE DEPTH .....  
 ELEVATION ..... DIP ..... PROPOSED DEPTH .....

DEPTH FEET	FORMATION	SAMPLE NO.	FROM	TO	WIDTH	ASSAY VALUES		
199.7-284	Continued							
	Black bands of a rock forming							
	minerals fairly magnetic - Some							
	Increase in feldspathic qtz.							
	stringers containing pyrite and							
	trace of chalco. - Banding @ 45°							
	to core.							
	- Water seam somewhere around 200'							
	casing might have been left in.							
	The black magnetic bands taper off							
	around 265', but still vari colored.							
	banding low in qtz. stringers & movement							
	only odd trace Py.							

DRILLED BY \_\_\_\_\_

SIGNED \_\_\_\_\_



# DIAMOND DRILL RECORD

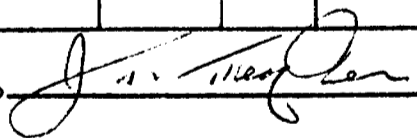
PROPERTY Great Bear Silver Mines Limited-Edwards Twp., Quebec HOLE No. 74-4  
 SHEET NUMBER 5 SECTION FROM ..... TO ..... STARTED .....  
 LATITUDE ..... DATUM ..... COMPLETED .....  
 DEPARTURE ..... BEARING ..... ULTIMATE DEPTH .....  
 ELEVATION ..... DIP ..... PROPOSED DEPTH .....

DEPTH FEET	FORMATION	SAMPLE NO.	FROM	TO	WIDTH	ASSAY VALUES		
284-317.5	Grades into light & dark gray banded volc. flow, cutting core @ 60°, finer grained and more silicious the odd fine streak pyrr. and magnetite.							
	Bands pale green basic volc. cont. fine dissem. py. 29J-295' and 312'-316'.							
	- @ 310'-2 streaks light brown cherty material ¼" thick.							
317.5-326	Dark gray with some black banding F.G. silicious rock containing 2.5% fine disseminated and banded Py.-							
	Pyrr. No apparent graphite, no movement., no chalco.							

TURAN ANOMALY

DRILLED BY \_\_\_\_\_

SIGNED \_\_\_\_\_

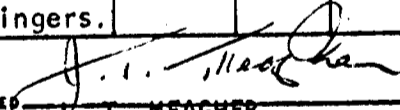


# DIAMOND DRILL RECORD

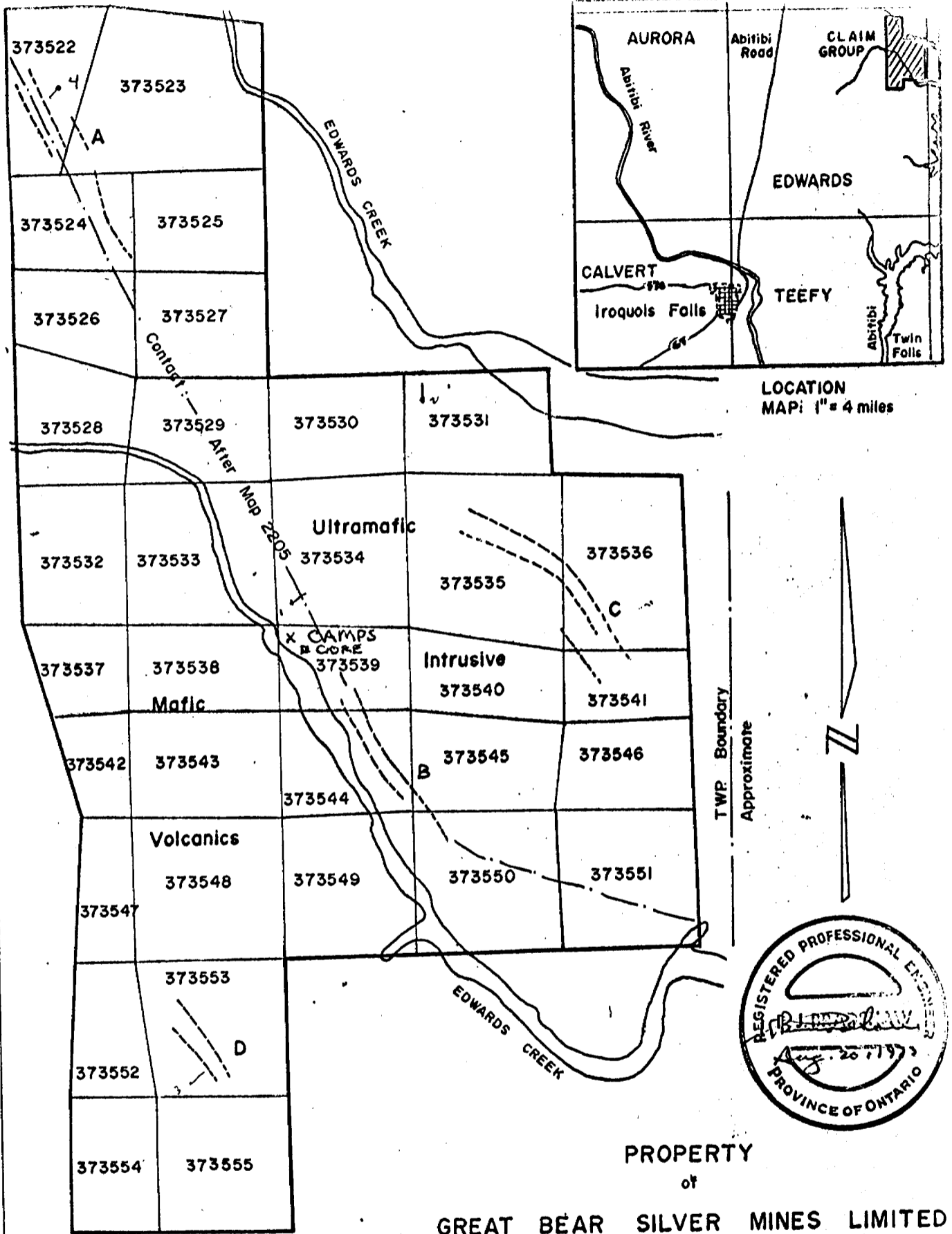
PROPERTY Great Bear Silver Mines Limited-Edwards Twp., Quebec HOLE No. 74-4  
 SHEET NUMBER 6 SECTION FROM ..... TO ..... STARTED .....  
 LATITUDE ..... DATUM ..... COMPLETED .....  
 DEPARTURE ..... BEARING ..... ULTIMATE DEPTH .....  
 ELEVATION ..... DIP ..... PROPOSED DEPTH .....

DEPTH FEET	FORMATION	SAMPLE NO.	FROM	TO	WIDTH	ASSAY VALUES		
326-357.5	Grades back to rock similar 284-316. barren of sulphides except for the odd trace pyrr. and py. 344-346 and several irregular streaks							
	<u>SPHALERITE</u> at 327'. - Last 10' shows minor alteration, banding fading minor recrystalization and minor dissem. py. - no Qtz. stringers.							
357.5-408	Diorite - fairly fine grained dense and massive rock - first 10' fairly magnetic. From 385' slightly coarser with only scattered magnetics a trace Py. Rock massive and unaltered to the end only a couple of irregular quartz stringers.							

CORE RECOVERY 100.2% END OF HOLE 408'  
 DRILLED BY DOMINIK DRILLING

SIGNED   
J. T. MEAGHER.





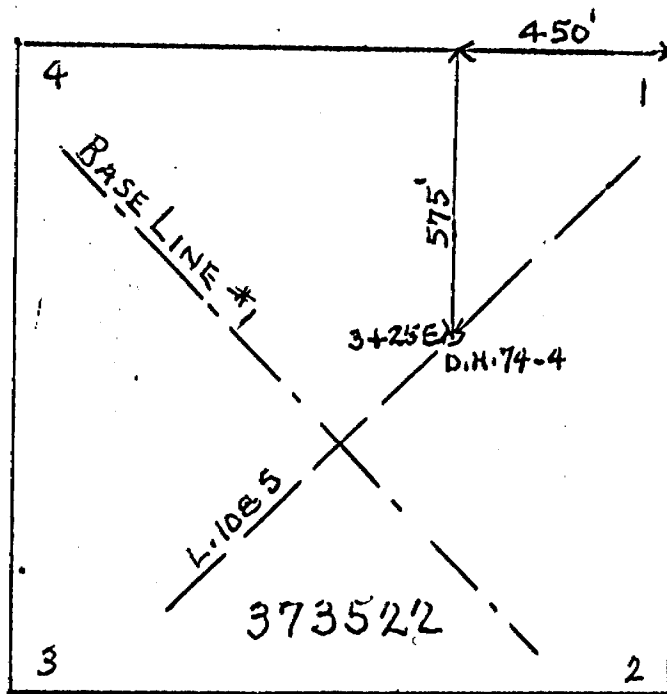
**D**  
 Conductive zone after map  
 by R.D. Bosschart, 1964.

PROPERTY  
 of  
**GREAT BEAR SILVER MINES LIMITED**  
 Edwards Township Ontario

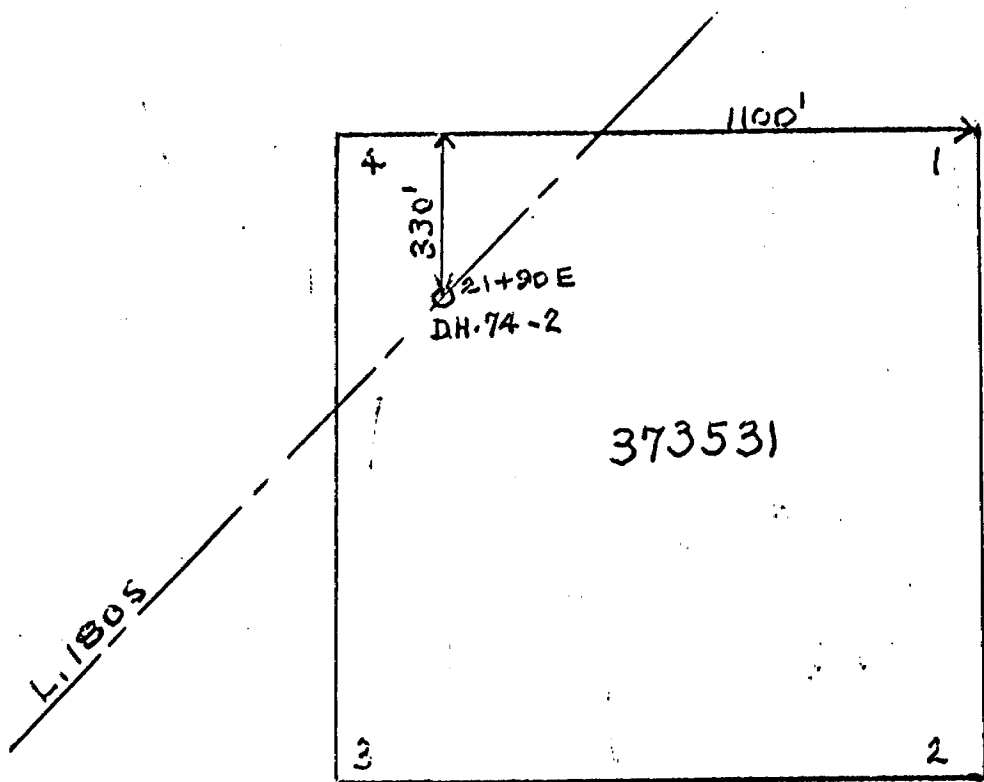
Scale: 1" = 1/4 mile

AUGUST

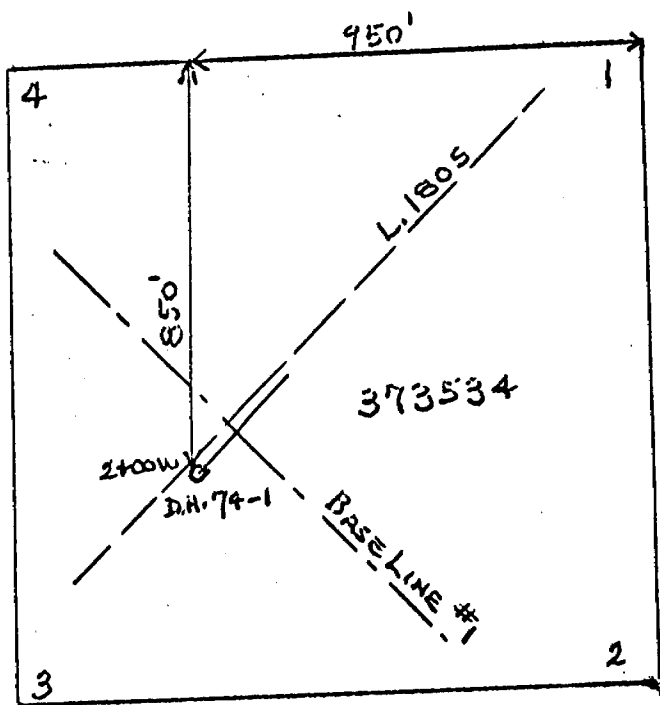
1973



SCALE	PROJECT GREAT BEAR SILVER MINES	DATE
1" = 400'	ARCA EDWARDS TWP.	9.11.11



SCALE		PROJECT: GREAT BEAR SILVER MINES	DATE
1" = 400'		AREA: EDWARDS TWP.	A. J. ...



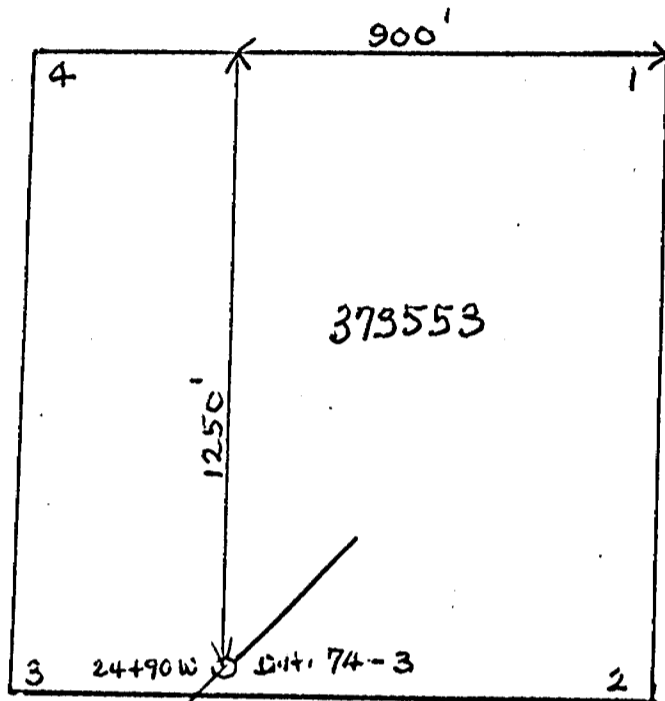
SCALE  
1" = 400'

PROJECT: GREAT BEAR SILVER MINES

AREA: EDWARDS TWP.

DATE

*[Handwritten signature]*



L. 211+655 (B.L.\*3)

SCALE	PROJECT: GREAT BEAR SILVER MINES	DATE
1" = 400'	GREAT EDWARDS TWP.	J. J. M. 11/22