



42A15SW0125 15 MCCART

010

Diamond Drilling

Township OF McCART

Report N^o: 15

Work performed by: UNION MINING CORP.

Claim N ^o	Hole N ^o	Footage	Date	Note
P 50799	U 1	761'	Oct/61	
P 50805	U 2	763'	Oct/61	

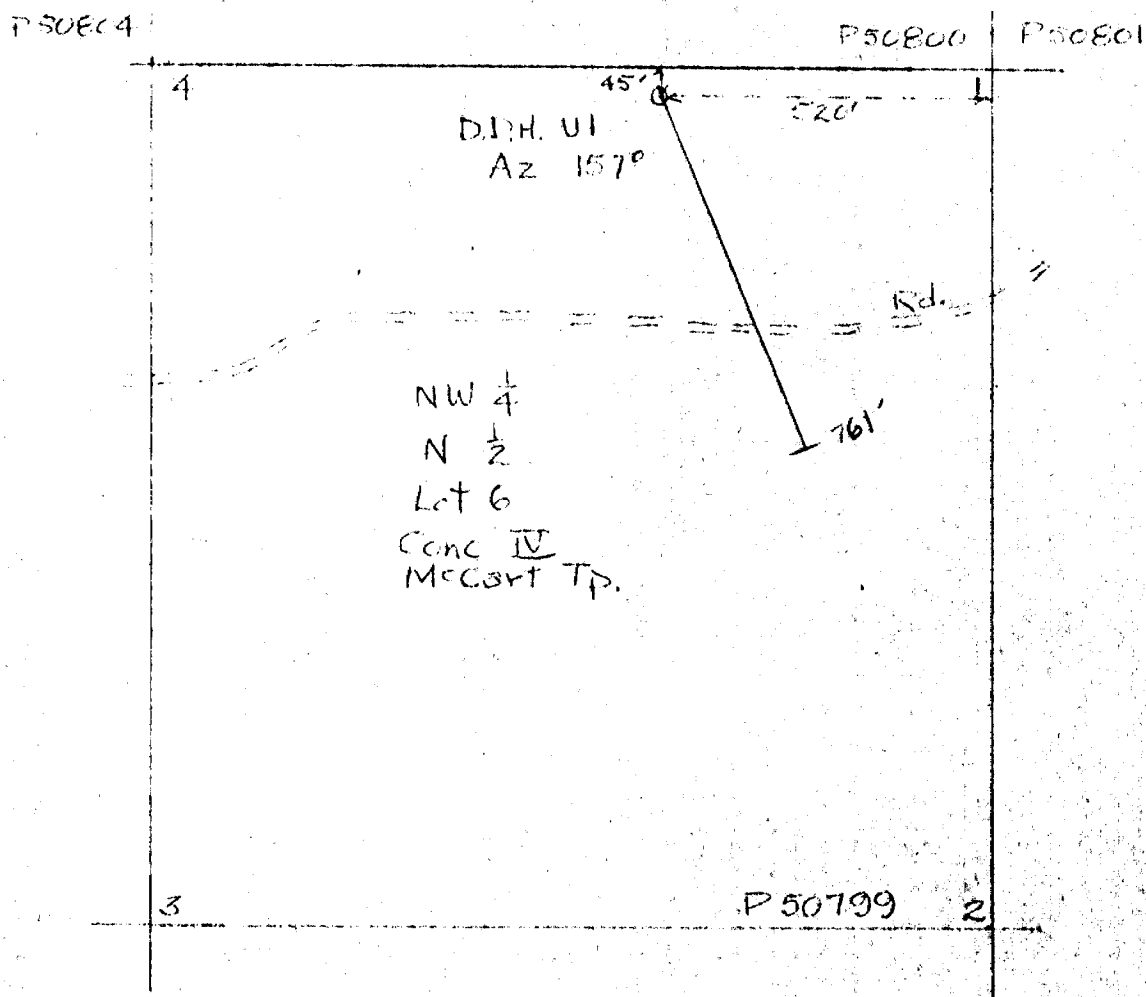
Notes:

UNION MINING CORP.

LOCATION MAP for HOLE UI
M^cCART TP. ONT.

Scale 1 in. = 300 ft.

Jan. 9, 1962

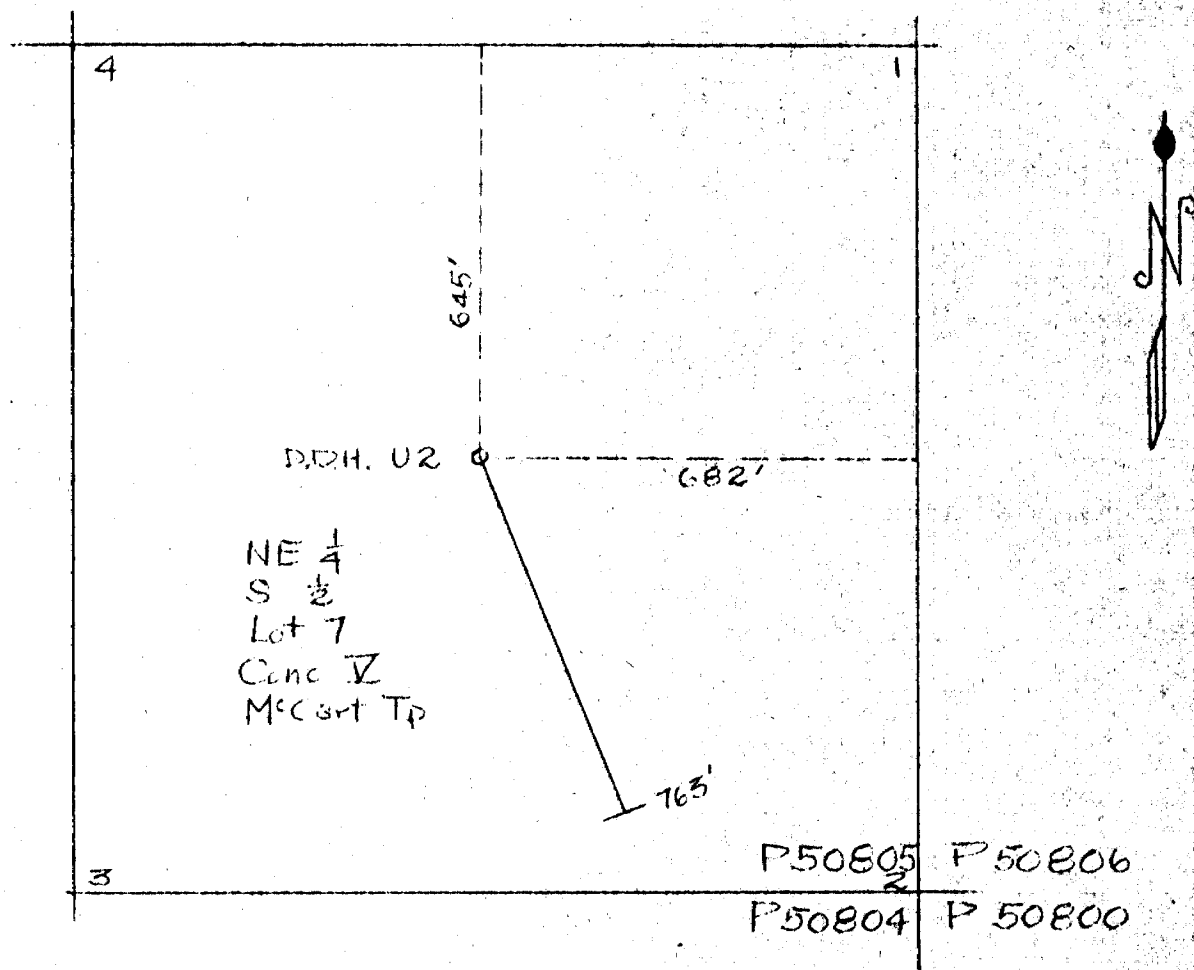


UNION MINING CORP.
LOCATION MAP for HOLE U2
M^cCART TP. ONT.

Scale: 1 in. = 300 ft.

Jan. 9, 1962

P-50799



[illegible]

DIAMOND DRILL RECORD

NAME OF COMPANY _____
 HOLE NO. _____
 LOCATION _____
 LATITUDE _____ DEPARTURE _____
 ELEVATION _____ DIP _____
 STARTED _____ FINISHED _____

FOOTAGE	NO.	FOOTAGE	NO.	FOOTAGE	NO.

HOLE NO. 17 PAGE NO. 1
 LOGGED BY L. G. Allen

FOOTAGE		DESCRIPTION	SAMPLE				ASSAYS			
FROM	TO		NO.	SUB-NO.	FOOTAGE FROM	FOOTAGE TO	FOOTAGE TOTAL			
0	10									
10	20									
20	30									
30	40									
40	50									
50	60									
60	70									
70	80									
80	90									
90	100									
100	110									
110	120									
120	130									
130	140									
140	150									
150	160									
160	170									
170	180									
180	190									
190	200									
200	210									
210	220									
220	230									
230	240									
240	250									
250	260									
260	270									
270	280									
280	290									
290	300									
300	310									
310	320									
320	330									
330	340									
340	350									
350	360									
360	370									
370	380									
380	390									
390	400									
400	410									
410	420									
420	430									
430	440									
440	450									
450	460									
460	470									
470	480									
480	490									
490	500									

CANADIAN MINING, 436 BROADVIEW AVE., TORONTO, ONT. M4M 1B6

DIAMOND DRILL RECORD

UNION MINING CORP.

NAME OF PROPERTY _____
 HOLE NO. U1 LENGTH _____
 LOCATION _____
 LATITUDE _____ DEPARTURE _____
 ELEVATION _____ AZIMUTH _____ DIP _____
 STARTED _____ FINISHED _____

FOOTAGE	DIP	AZIMUTH	FOOTAGE	DIP	AZIMUTH

HOLE NO. U1 SHEET NO. 5

REMARKS _____

LOGGED BY L. G. Harris

FOOTAGE		DESCRIPTION	SAMPLE					ASSAYS				
FROM	TO		NO.	% SULPH. IDES	FOOTAGE			%	%	OZ/TON	OZ/TON	
					FROM	TO	TOTAL					
707/6	735	Andesite: porphyritic or amygdaloidal becoming lighter grey with depth. Phenos. or amygdules gradually become less prominent with depth. Black particles scattered throughout become green with depth. Not carbonatized after 723'.										
735	761	Andesite and Dacite: Buff and grey rock with a whitish overall cast. Not noticeably carbonatized. A few calcite veinlets at various angles. Some indistinct spots.										
	761	End of hole.										

UNION MINING CORP.

NAME OF PROPERTY McCart Tp.
HOLE NO. U2 LENGTH 763'
LOCATION Cleim P 50805
LATITUDE 645' S of #1 post DEPARTURE 682' W of No. 1 post
ELEVATION _____ AZIMUTH 157° DIP -40°
STARTED Oct. 13/61 FINISHED Oct. 19/61

FOOTAGE	DIP	AZIMUTH	FOOTAGE	DIP	AZIMUTH
0	-40°				
620	-38°				

HOLE NO. 112 SHEET NO. 1

REMARKS _____

LOGGED BY L. G. Hall

[illegible]

DIAMOND DRILL RECORD

UNION MINING CORP.

NAME OF PROPERTY _____
 HOLE NO. U2 LENGTH _____
 LOCATION _____
 LATITUDE _____ DEPARTURE _____
 ELEVATION _____ AZIMUTH _____ DIP _____
 STARTED _____ FINISHED _____

FOOTAGE	DIP	AZIMUTH	FOOTAGE	DIP	AZIMUTH

HOLE NO. U2 SHEET NO. 2

REMARKS _____

LOGGED BY L. G. Hobbs

FOOTAGE		DESCRIPTION	SAMPLE				ASSAYS				
FROM	TO		NO.	S. D. I. DES.	FOOTAGE			%	%	OZ/TON	OZ/TON
					FROM	TO	TOTAL				
647	658/6	Qtz. vein: with a little andesite impurity and some pyrite.									
658/6	660	Andesite-Argillite zone: min'd. with pyrite.									
660	663/6	Qtz. vein: with pyrite.									
663/6	763	Andesite: mineralized with dissem. pyrite to about 676'. Some qtz. at 666' and 667' carrying pyrite. Beginning about 697' gobs of pyrrhotite and pyrite occur in the andesite and sometimes with calcite veins.									
	763	End.									