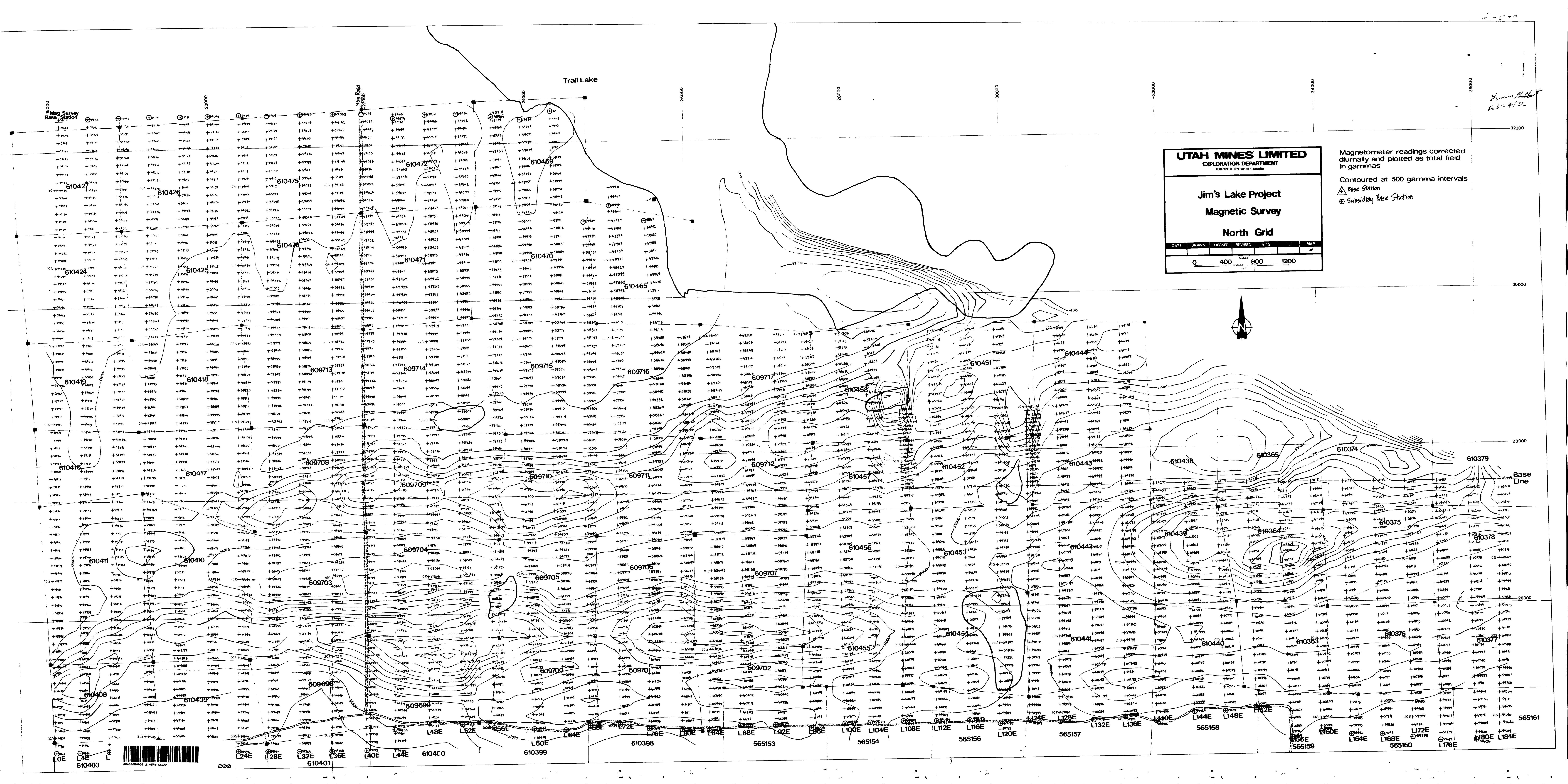


Francis Shuter
Feb 4/92



UTAH MINES LIMITED
EXPLORATION DEPARTMENT
TORONTO, ONTARIO, CANADA

Jim's Lake Project
Magnetic Survey
North Grid

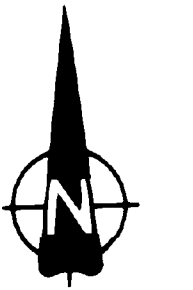
DATE	DRAWN	CHECKED	REVISED	N°S	FILE	MAP

0 400 SCALE 600 1200 OF

Magnetometer readings corrected diurnally and plotted as total field in gammas

Contoured at 500 gamma intervals

▲ Base Station
○ Subsidiary Base Station

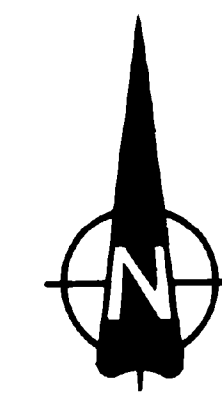
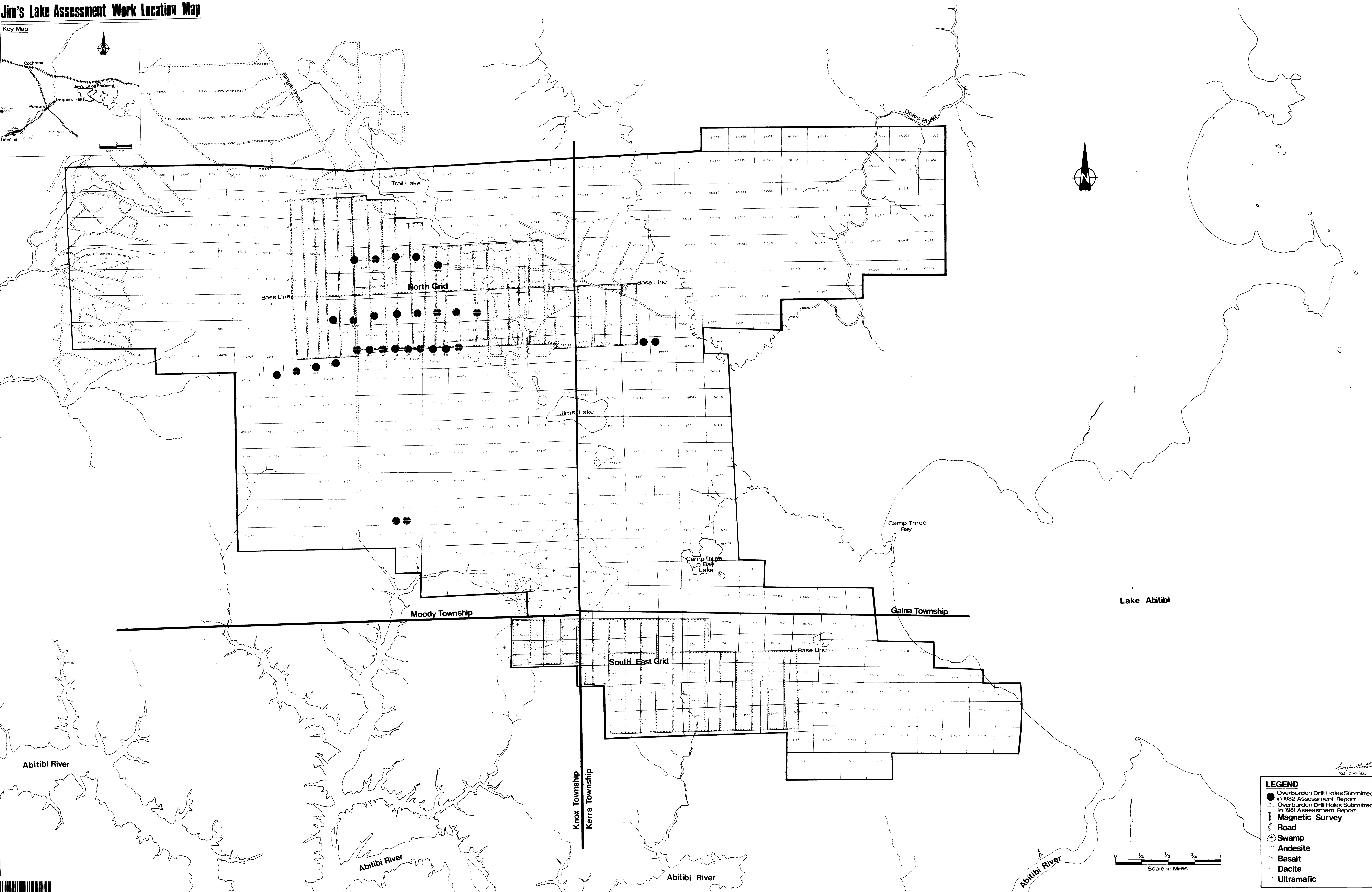
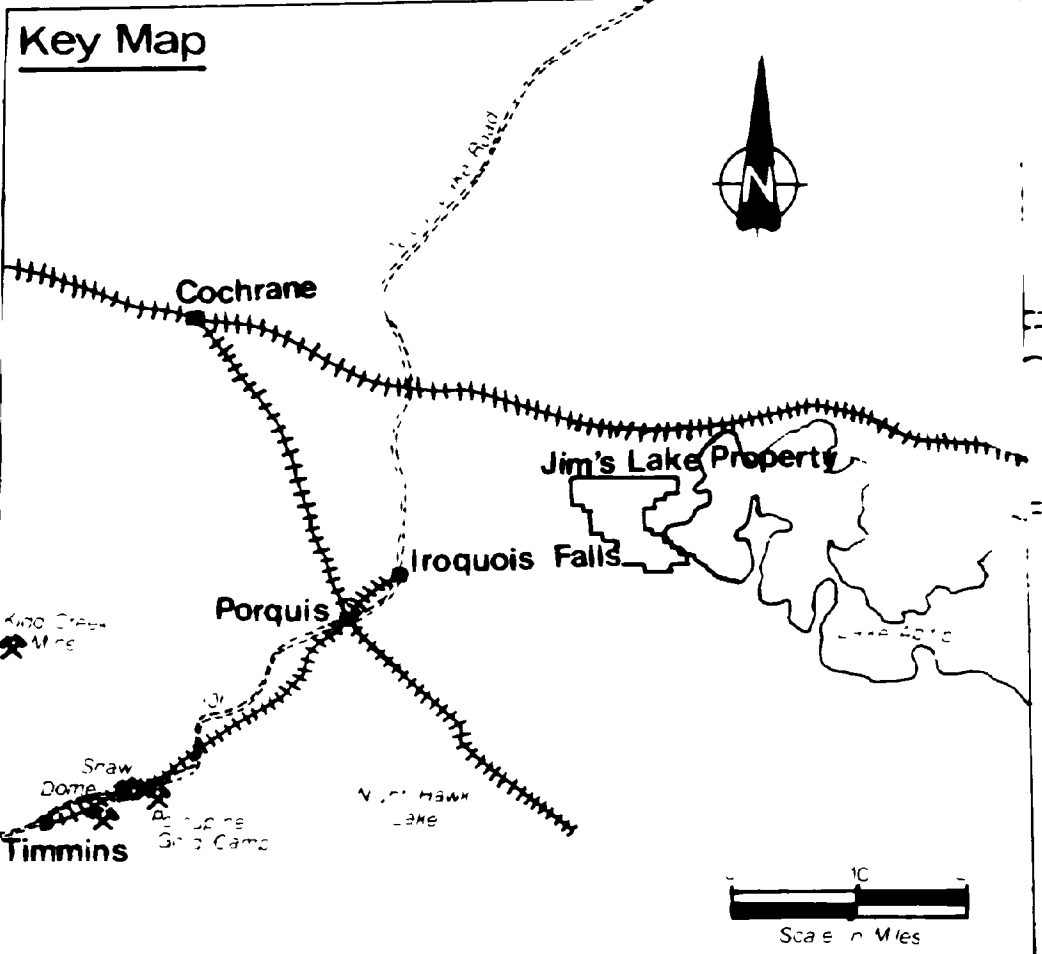


610403 610401 610402 610404 610405 610406 610407 610408 610409 610410 610411 610412 610413 610414 610415 610416 610417 610418 610419 610420 610421 610422 610423 610424 610425 610426 610427

610398 610399 610400 610401 610402 610403 610404 610405 610406 610407 610408 610409 610410 610411 610412 610413 610414 610415 610416 610417 610418 610419 610420

L24E L28E L32E L36E L40E L44E L48E L52E L56E L60E L64E L68E L72E L76E L80E L84E L88E L92E L96E L100E L104E L108E L112E L116E L120E L124E L128E L132E L136E L140E L144E L148E L152E L156E L160E L164E L168E L172E L176E L180E L184E

Jim's Lake Assessment Work Location Map



LEGEND

- Overburden Drill Holes Submitted in 1982 Assessment Report
- Overburden Drill Holes Submitted in 1981 Assessment Report
- ▭ Magnetic Survey
- Road
- ⊖ Swamp
- ⬤ Andesite
- ⬤ Basalt
- ⬤ Dacite
- ⬤ Ultramafic

*David Stewart
Feb 24/92*

