



42B01NE0154 24 KEITH

010

Diamond Drilling

Township of Keith

Report NO: 24

Work performed by: Radio Hill Mines Ltd.

Claim NO	Hole NO	Footage	Date	Note
S 129744	G-1	435'	May/67	
	G-2	435.5'	May/67	
	G-3	377'	May/67	

Notes:

DIAMOND DRILL RECORD

Hole No. G1 Sheet No. 1

Property RADIO HILL MINES Co. LTD.
 Location CLAIM 5 129744
KEITH TOWNSHIP
 Latitude 550 SOUTH Post No. 4-5129744
 Departure 230 WEST EAST
 Bearing NORTH

Dip
-50° NORTH
 Total Footage 435.0

Elev. Collar _____
 Datum _____
 Date Started MAY 13, 1967
 Date Completed MAY 18, 1967
 Drilled by CONTINENTAL D.D. Co. LTD.
 Logged by H.S. GERSON

Footage		Formation	Sample Number	Sample Footage	Sample Width	Gold Sample	Gold Sludge	Remarks
From	To							
0	26	OVERBURDEN						Bedrock 26-0'
26	204	METAVOLCANICS Andesite; massive, dense but porphyritic in places 166.5 Sharp contact intensely sheared Fuffaceous facies 203 Diorite dike						
204	222	METASEDIMENT Shaly, graphitic; dense; black in colour						
222	241	METAVOLCANICS Acidic TUFF? brecciated and cracks filled with sulphides						
241	273	METAVOLCANICS Andesite; very dense						
273	304	GRANITE Intensely sheared and metamorphosed (Sericitic-chloritic-schist)						
304	330	METAVOLCANICS Acidic in composition; poorly brecciated except from 316-317.2 Well-metallized by sulphides mainly pyrite						

Date of Examination May 25, 1967

H.S. Gerson

DIAMOND DRILL RECORD

 Hole No. G1 Sheet No. 2

Property RADIO HILL MINES CO. LTD
 Location CLAIM 5129744
KEITH TOWNSHIP
 Latitude 55.0 SOUTH Post No. 4-5129744
 Departure 230 ~~WEST~~ EAST
 Bearing NORTH

Dip -50° NORTH
 Total Footage 435.0

Elev. Collar.....
 Datum.....
 Date Started MAY 13, 1967
 Date Completed MAY 18, 1967
 Drilled by CONTINENTAL D.D. CO. LTD
 Logged by H.S. GERSON

Footage		Formation	Sample Number	Sample Footage	Sample Width	Gold Sample	Gold Sludge	Remarks
From	To							
330	337	GRANITE Gneissic in appearance						
337	348	METAVOLCANICS Acidic in composition; sheared (chloritic schist)						
348	424	METAVOLCANICS Acidic TUFF? 352.3-352.8 Diorite dike 353.3-354.0 do. 361-365.0 Porphyry; very fine phenocrysts 393-393.3 do. 404-414.5 Diorite dike						
424	429	CONTACT ZONE Intensely sheared; brecciated and cemented by white quartz						
429	435	METAVOLCANICS Andesite; intensely sheared (chloritic schist becoming talc-chloritic schist near 435.0)						
435		End D.D. Hole G1						

 Date of Examination May 25, 1967
H.S. Gerson

DIAMOND DRILL RECORD

Hole No. G2 Sheet No. 1

Property RADIO HILL MINES CO. LTD
 Location CLAIM 5 129744
KEITH TOWNSHIP

Latitude 200 SOUTH Post No. 4 - 5129744
 Departure ~~200~~ 157 EAST
 Bearing SOUTH

Dip
 |
 -50° SOUTH

Total Footage 435.5

Elev. Collar _____
 Datum _____
 Date Started MAY 20, 1967
 Date Completed MAY 23, 1967
 Drilled by CONTINENTAL D.D. CO. LTD.
 Logged by H. S. GERSON

Footage		Formation	Sample Number	Sample Footage	Sample Width	Gold Sample	Gold Sludge	Remarks
From	To							
0	73	OVERBURDEN						Bedrock 73.0'
73	143	METAVOLCANICS Andesite; intensely sheared (Talc-chlorite schist)						
		110.8-111.1 Porphyry dikelet 112.8-113.1 db.						
143	153	DIORITE Massive, even-grained rock now intensely altered						
153	220.5	METAVOLCANICS Andesite						
		186.7-187.9 Porphyry dikelet 187.9 Talc-chlorite schist 193.0-194.5 Tuffaceous band intercalated 194.5-206.7 Talc-chlorite schist 206.7-217 Basic dike (lamprophyre) 217-219 Talc-chlorite schist with fragments of granite 219.5 North contact with granite						
220.5	247.2	GRANITE Intensely metamorphosed						

Date of Examination May 25, 1967

H. S. Gerson

DIAMOND DRILL RECORD

Hole No. E2 Sheet No. 2

Property RADIO HILL MINES Co. LTD
 Location CLAIM 5-129744
KEITH TOWNSHIP
 Latitude 200 SOUTH Post No. 4-S.129744
 Departure 157 EAST
 Bearing SOUTH

Dip
 |
 - 50° SOUTH
 |
 Total Footage 435.5'

Elev. Collar _____
 Datum _____
 Date Started MAY 20, 1967
 Date Completed MAY 23, 1967
 Drilled by CONTINENTAL D.D. Co. LTD.
 Logged by H.S. GERSON

Footage		Formation	Sample Number	Sample Footage	Sample Width	Gold Sample	Gold Sludge	Remarks
From	To							
		241.7-244.9 Xenolith (sericitic schist)						
		245.7-245.9 do.						
247.2	276.8	METAVOLCANICS Acidic TUFF? Intensely sheared rhyolitic tuff now sericitic schist						
		268.9-272.1 Diorite dikelet						
276.8	290.2	METASEDIMENT Graphitic, slaty; black carbonaceous rock, dense in places.						
		279.8-290.2 Dioritic dikelet intruded at north contact						
290.2	435.5	METAVOLCANICS Andesite; somewhat silicified and metamorphosed; even-grained and even-textured for considerable part 315.0 porphyritic facies 406.0 intensely sheared (talc-chlorite schist)						
	435.5	End of d.d. Hole E2						

Date of Examination May 25, 1967

H.S. Gerson

DIAMOND DRILL RECORD

Hole No. G3 Sheet No. 1

Property RADIO HILL MINES CO. LTD.
 Location CLAIM 5-129744

Latitude 65° SOUTH Post No. 4-5129744
 Departure 330 EAST
 Bearing SOUTH 15° EAST

Dip -50° SOUTH

Total Footage 377.0'

Elev. Collar _____
 Datum _____
 Date Started May 25, 1967
 Date Completed May 26, 1967
 Drilled by CONTINENTAL D.D. CO. LTD
 Logged by H. S. GERSON

Footage		Formation	Sample Number	Sample Footage	Sample Width	Gold Sample	Gold Sludge	Remarks
From	To							
0	12	OVER BURDEN						Bedrock at 12.0'
12	41	METAVOLCANICS Andesitic in composition Altered and sheared						
41	93	DIORITIC Intrusive? Fine-grained, even-textured, massive						
93	114	METAVOLCANICS Rhyolitic flow with some tuffaceous sections						
114	128	METASEDIMENTS Phyllites						
128	138	METAVOLCANICS Rhyolitic flow with some narrow bands phyllites intercalated						
138	152	METASEDIMENTS Phyllites						
152	279	GRANITE Intensely altered and sheared now talc-sericitic schist rock						
279	301	METAVOLCANICS Andesitic in composition Altered and sheared; mainly talc schist						
301	321	METAVOLCANICS Andesitic in composition Altered and sheared; mainly talc-chloritic schist						

Date of Examination May 26, 1967

H. S. Gerson

DIAMOND DRILL RECORD

Hole No. G-3 Sheet No. 2

Property RADIO HILL MINES CO. LTD
 Location CLAIM 5-129744
KEITH TOWNSHIP
 Latitude 65° SOUTH Post No. 4-5129744
 Departure 330 EAST
 Bearing SOUTH 15° EAST

Dip - 50° SOUTH

Total Footage 377.0'

Elev. Collar _____
 Datum _____
 Date Started May 25, 1967
 Date Completed May 26, 1967
 Drilled by CONTINENTAL D. D. CO. LTD.
 Logged by H. S. GERSON

Footage		Formation	Sample Number	Sample Footage	Sample Width	Gold Sample	Gold Sludge	Remarks
From	To							
321	329	<u>DIORITIC Intrusive?</u> <u>Intensely altered</u>						
329	350.5	<u>METAVOLCANICS Andesitic in composition</u> <u>Altered and sheared; mainly talc schist</u>						
350.5	369	<u>BASIC DIKE</u> <u>Intensely altered now mainly</u> <u>chloritic schist</u>						
369	377	<u>GRANITE</u>						
377		<u>End of HOLE G-3</u>						

Date of Examination May 26, 1967

H. S. Gerson

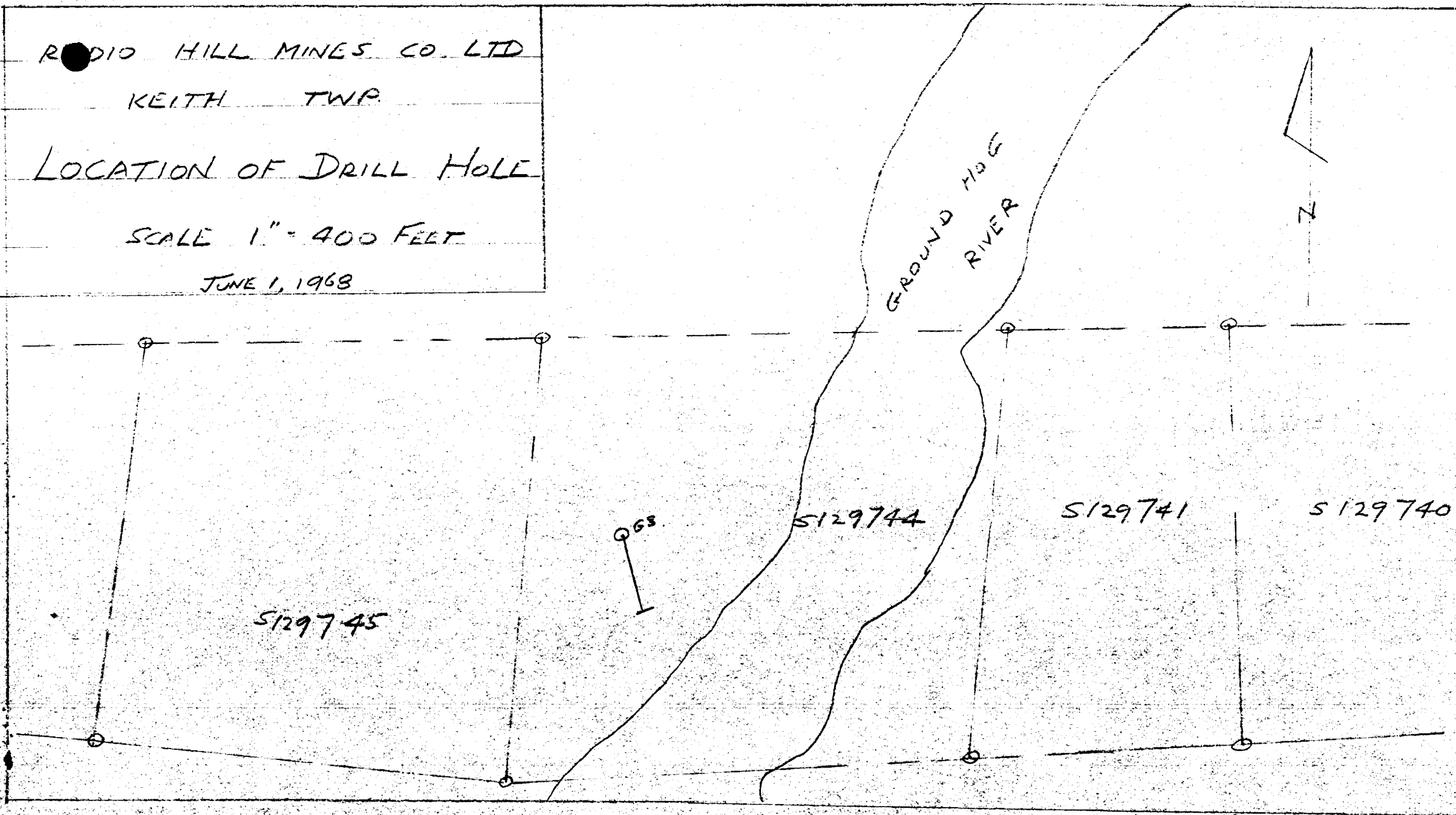
RODIO HILL MINES CO. LTD

KEITH TWP.

LOCATION OF DRILL HOLE

SCALE 1" = 400 FEET

JUNE 1, 1968



BIG HILL MINES LIMITED

KEITH

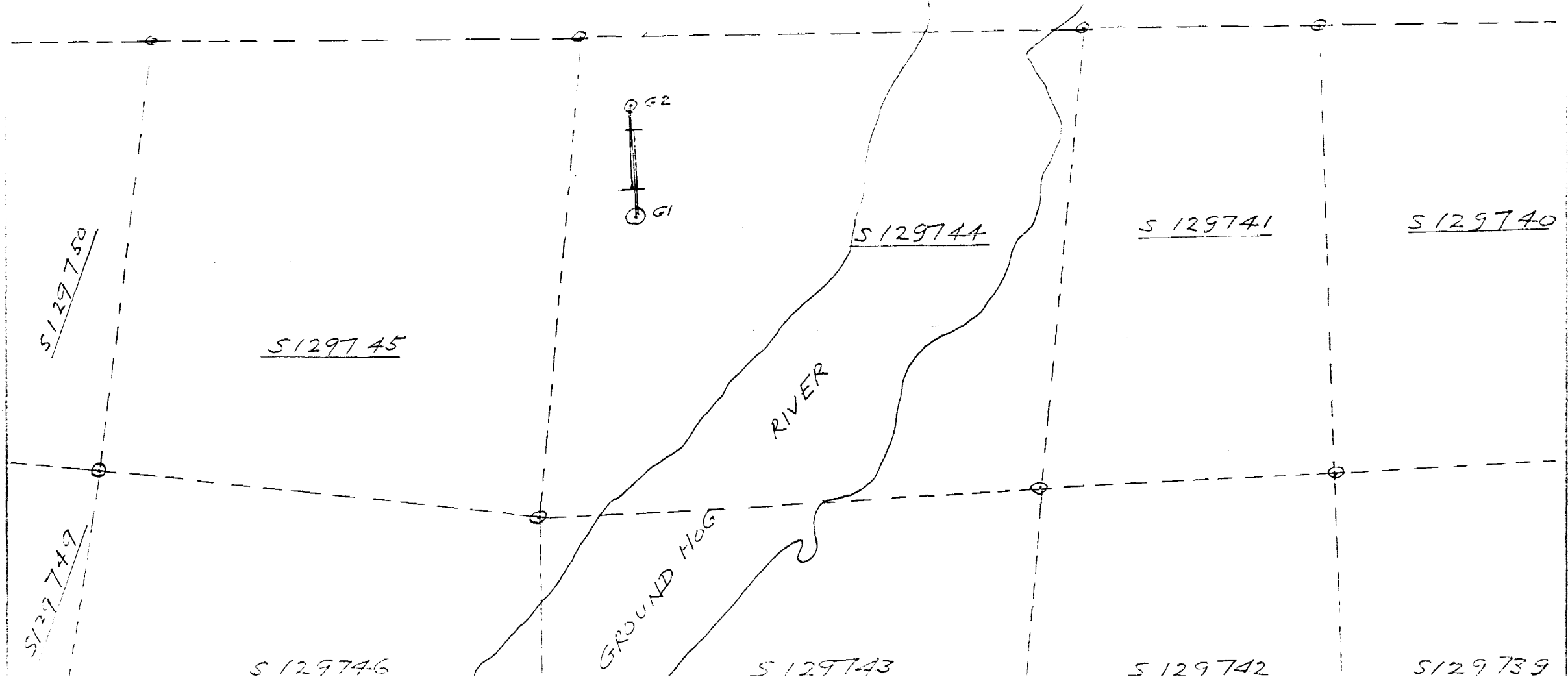
TWP

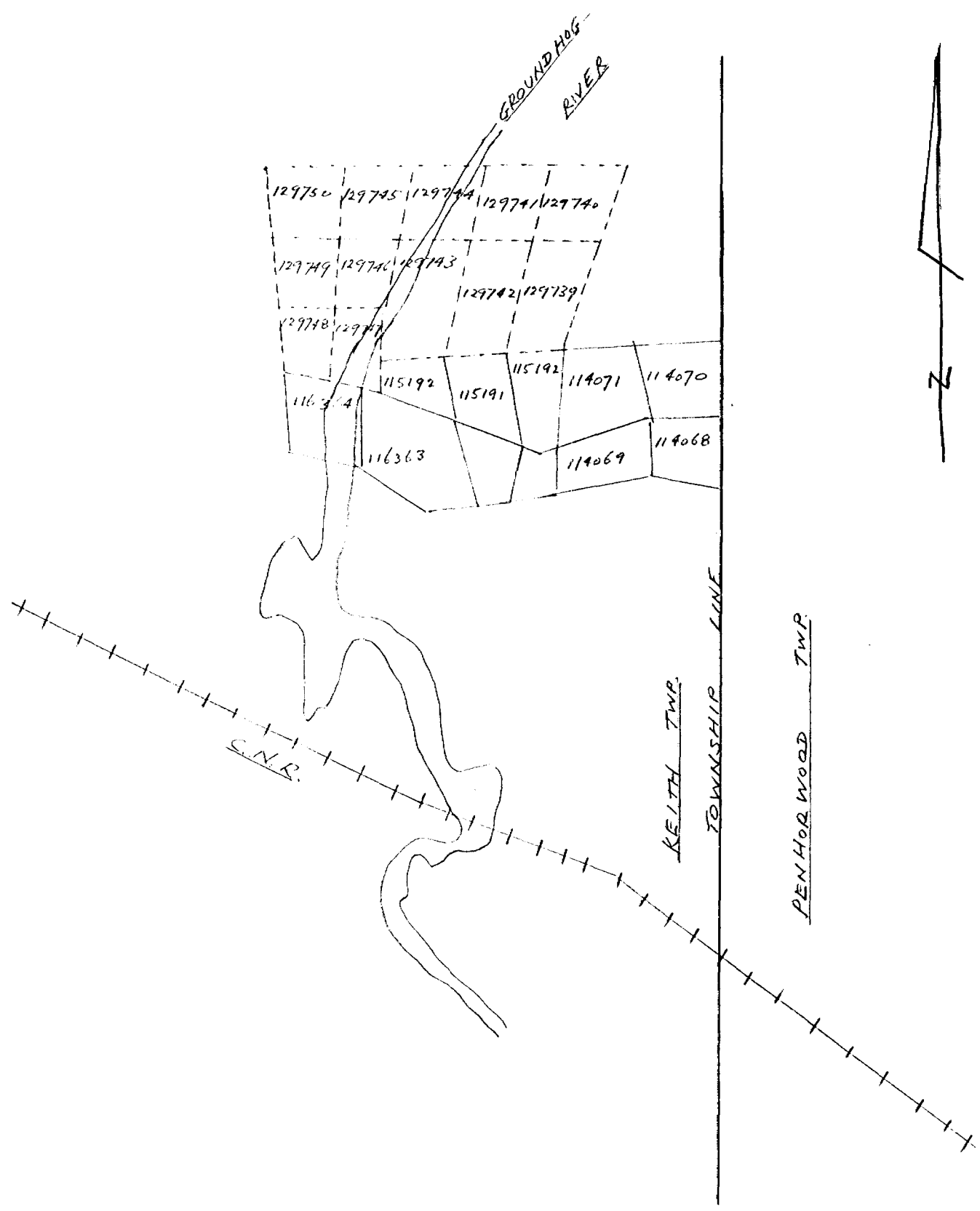
LOCATION OF DRILL HOLES

SCALE 1" = 400 FEET

JUNE 1, 1967

115F

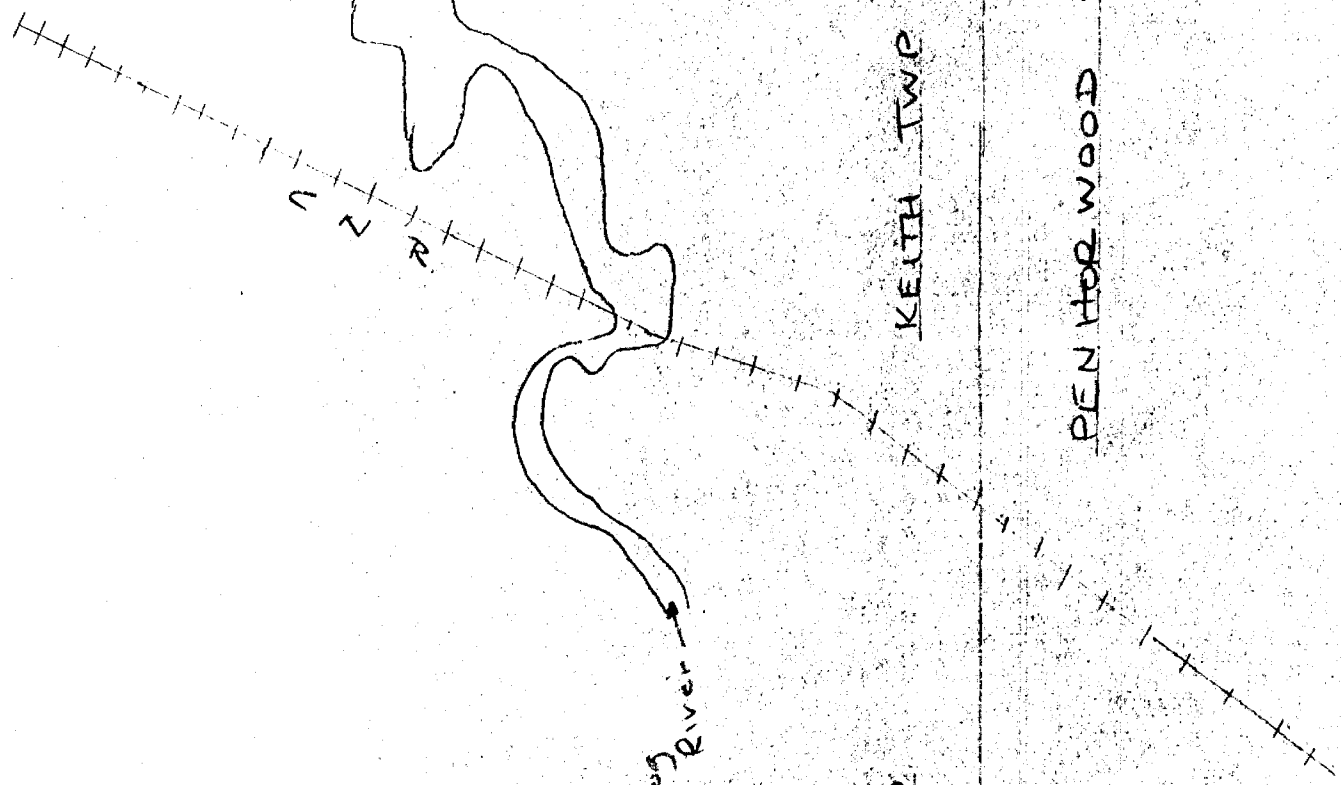
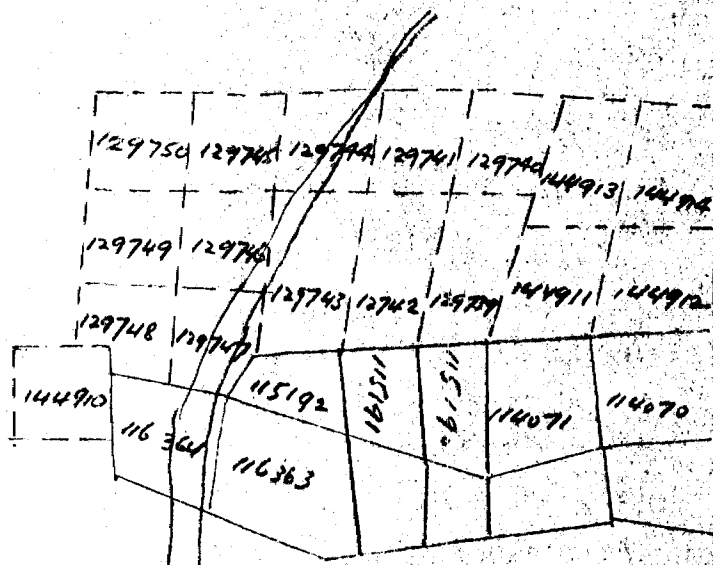




RADIO HILL MINES LIMITED
 KEITH TWP.
 LOCATION OF CLAIMS

SCALE 1" = 40 CHS

JUNE 1, 1967



Groundhog River

KEITH TWP

PEN HORWOOD TWP

KEITH TWP

TOWNSHIP LINE

RADIO HILL MINES CO LIMITED
 KEITH TWP
 LOCATION OF CLAIMS

SCALE 1" = 40 CHAINS
 JUNE 1, 1968