



42B01NE0157 12 KEITH

010

Diamond Drilling

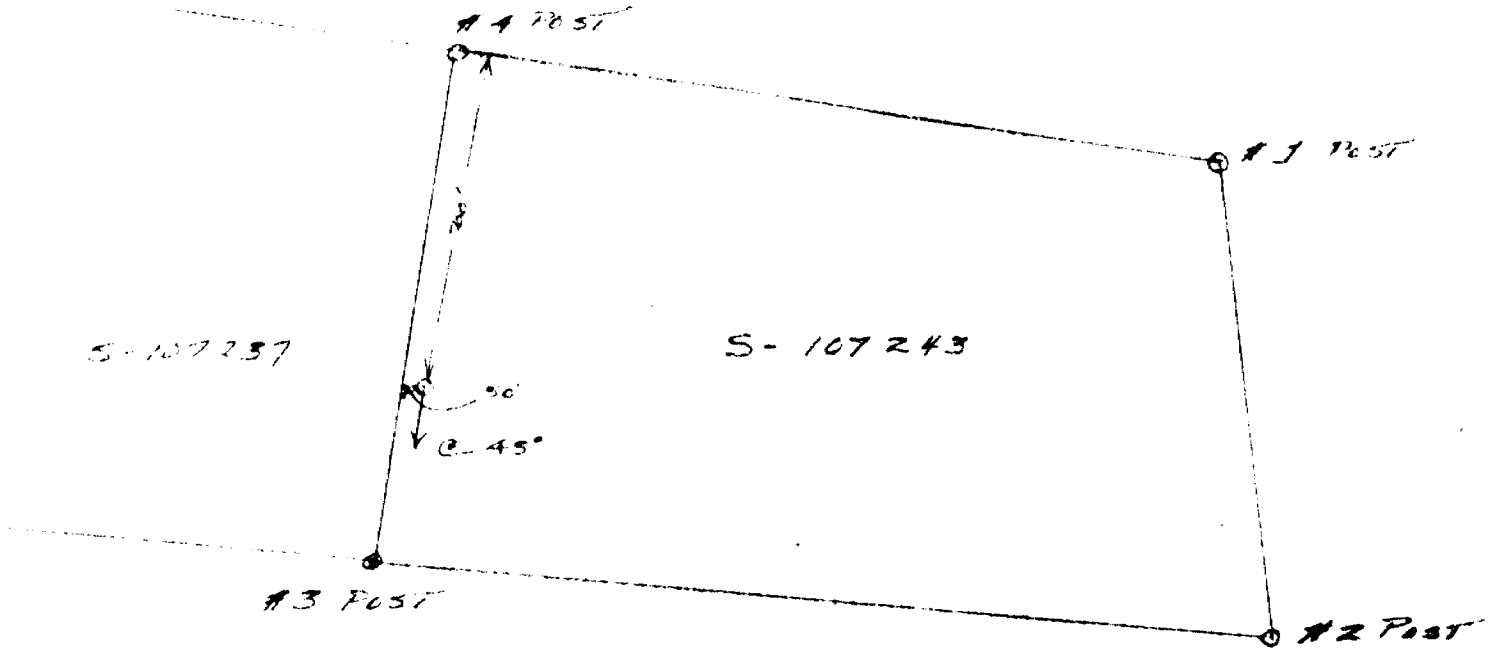
Township of Keith

Report N^o: 12

Work performed by: Algoma Ore Properties Ltd.

| Claim N ^o | Hole N ^o | Footage | Date | Note |
|----------------------|---------------------|--------------------|---------|------|
| S 107243 | 2A | 225' 157 382 | July/60 | |

Notes:



S-107237

S-107243

#4 POST

#1 POST

#3 POST

#2 POST

SCALE: 1" = 400'

ALGOMA ORE PROPERTIES LIMITED

EXPLORATION DEPARTMENT

DIAMOND DRILL HOLE NO. 2A

PROPERTY **Groundhog River**

LOCATION OF COLLAR 2+00 W 7+00S

ELEV.

AZIMUTH AT COLLAR. West side of River - 188°

on 8/107243

DIP AT COLLAR. 25° - 45°

205° - 45°

VERTICAL SECTION NO.

LENGTH 225'

CORE SIZE. 1x

REC. IN MIN. ZONE.

LOGGED BY **V.R. Veem** STARTED. **July 1/60** FINISHED. **July 13/60**

C.P.-10420-51

| FOOTAGE | DESCRIPTION | SAMPLING | | | ANALYSES | | | |
|-----------|---|----------|----|------|----------|--|--|--|
| | | FROM | TO | REC. | | | | |
| 0-22 | casing | | | | | | | |
| 22-26.5 | diorite intrusive | | | | | | | |
| 26.5-36 | pale-green-white banded lf. bands 1/2" - 1" wide | | | | 5% | | | |
| 36-50 | pale green lf. very fine grained magnetite (sample) | | | | 25% | | | |
| 50-55.5 | ditto - gray bands | | | | 25% | | | |
| 55.5-75 | black-green banded lf. bands - not magnetic, some small bands of ol. schist included. dark bands = 40% of core @ 73.5 1' of granulated schist | | | | 2% | | | |
| 75-100 | black-white lf. black bands 30-40% of core | | | | 3% | | | |
| 878 | 3" sulphides | | | | | | | |
| 891 | 1" sulphides | | | | | | | |
| 899 | small stringers pyrrhotite | | | | | | | |
| 100-125 | black-white banded lf. chert bands 3/4" long - black bands consist of green chert and a non-magnetic black band. Some patches of pyrrhotite 1/2" in diameter. | | | | 3% | | | |
| 125-150 | white-black lf. black bands = 20-25% of core | | | | | | | |
| 150-154.2 | white-buff-grey lf. | | | | 10% | | | |
| 154-155 | " " " " | | | | 5% | | | |
| 155-156 | " " " " | | | | 15% | | | |
| 156-160.8 | " " " " | | | | 5% | | | |
| | core very granulated in places | | | | | | | |

(continued.....)

[Handwritten Signature]

ALGOMA ORE PROPERTIES LIMITED

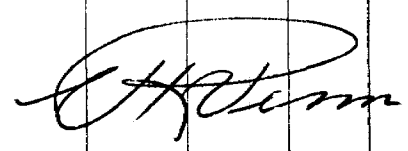
EXPLORATION DEPARTMENT

DIAMOND DRILL HOLE NO. 2A

PROPERTY **Groundhog River**

CONTINUED

C.P.-10420-51

| FOOTAGE | DESCRIPTION | SAMPLING | | | ANALYSES | | | |
|-----------------|---|----------|----|------|----------|--|--|--|
| | | FROM | TO | REC. | | | | |
| 160.8- 161.6 | lanprophyr dike | | | | | | | |
| 161.6-163 | pink banded lf. | 15% | | | | | | |
| 163-163.7 | white chert | | | | | | | |
| 163.7- 167.2 | pink and white banded lf. | 20% | | | | | | |
| 167.2- 168.5 | white chert | | | | | | | |
| 168.5-170 | broken banded lf. | 10% | | | | | | |
| 170-171.9 | " " " | 5%+ | | | | | | |
| 171.9-175 | white-buff lf. - all dark bands are magnetic | 15% | | | | | | |
| 175-186 | white-black lf. | 25% | | | | | | |
| 186-188.5 | rotted and fractured chert | | | | | | | |
| 188.5-200 | black and white lf. - 55% black bands | | | | | | | |
| 200-210 | ditto - 60% black bands | | | | | | | |
| 210-212.5 | ditto - black bands are wider | | | | | | | |
| 212.5-215 | pale gray sericite schist | | | | | | | |
| 215-218.7 | pale green gritty schist | | | | | | | |
| 218.7-225 | gray sericite schist (possibly contains FeCO ₃) | | | | | | | |
| | <p>Notes: schist 212.5 - 225 probably contains FeCO₃</p> <p style="font-size: 1.2em; font-family: cursive;">Core stored in the south-west part of S-2450 - 200' from the River at drillers' camp site.</p> <div style="text-align: right; font-family: cursive; font-size: 1.5em; margin-top: 10px;">  </div> | | | | | | | |