



42801NE0158 11 KEITH

010

Diamond Drilling

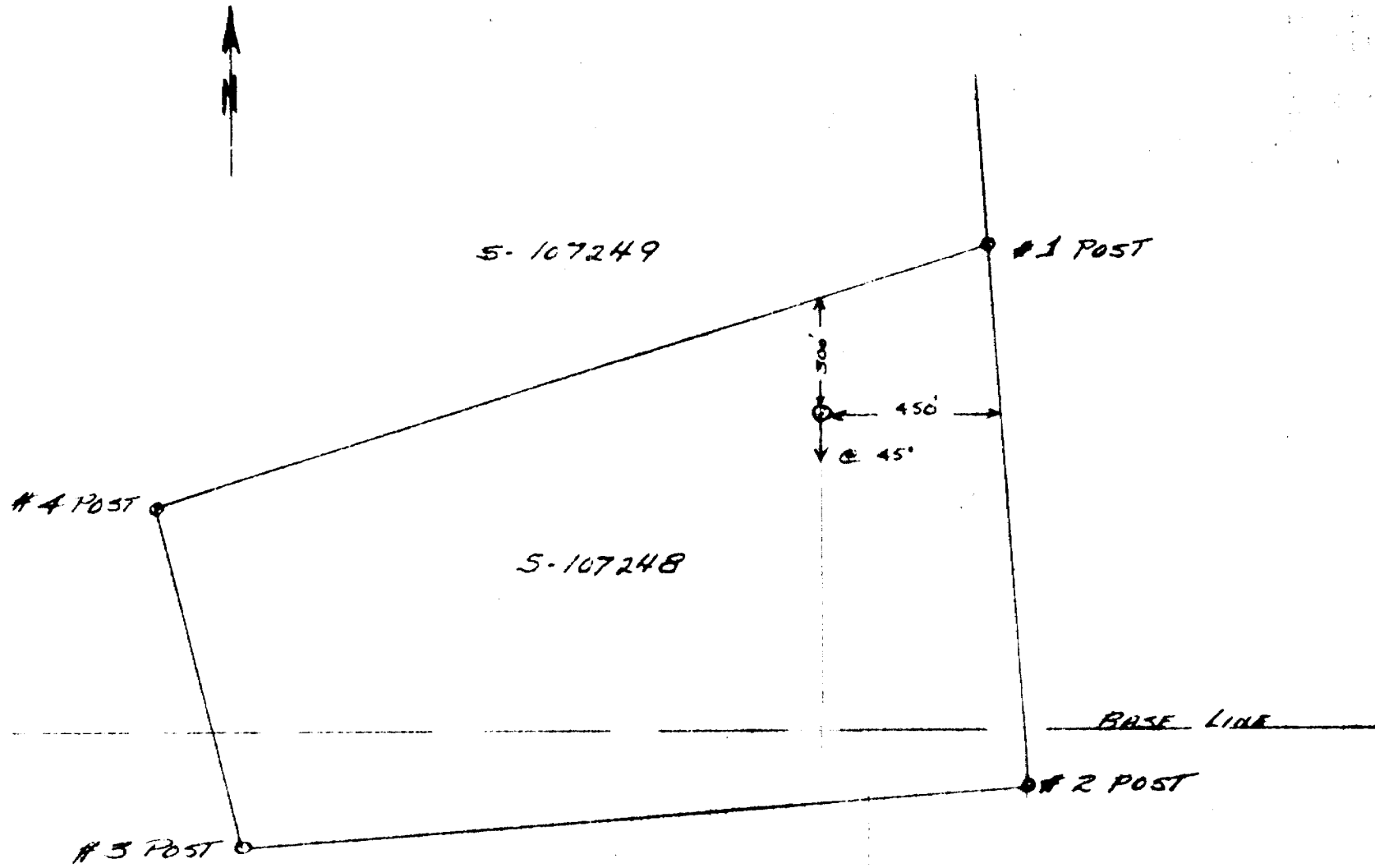
Township of Keith

Report N^o: 11

Work performed by: Algoma Ore Properties Ltd.

Claim N ^o	Hole N ^o	Footage	Date	Note
S 107248	1A	157'	June/60	

Notes:



SCALE: 1" = 400'

ALGOMA ORE PROPERTIES LIMITED

EXPLORATION DEPARTMENT

DIAMOND DRILL HOLE NO. **1A.**

PROPERTY

GRANDRIVER RIVER

LOCATION OF COLLAR **48+00E. 8+20 N.**

ELEV.

AZIMUTH AT COLLAR. **South east**

3 107248

DIP AT COLLAR.

**25° 36°
170° 34°**

VERTICAL SECTION NO.

LENGTH **175'**

CORE SIZE. **1/2"**

REC. IN MIN. ZONE.

LOGGED BY. **V.R.V.**

STARTED. **June 26/60**

FINISHED. **June 27/60**

C.P.-10420-51

FOOTAGE	DESCRIPTION	SAMPLING			ANALYSES			
		FROM	TO	REC.				
0-48	Casing							
48-50	Split section							
50-58.5	Gray - white. I.F. small patches of limonite							
58.5-59.3	Black - white banded I.F.							
59.3-62.0	Black - white banded I.F. some patches of limonite							
62-64.2	Lost core							
64.2-66.0	Gray-buff banded I.F.							
66.0-67.5	Lost core							
67.5-69	Gray - white banded I.F. some patches of limonite							
69.-71	Red jasper, banded I.F.							
71-75	" " " "							
75-76.1	" " " "							
76.1-78.5	Lost core							
78.5-80.5	Red jasper, banded I.F.							
80.5-82.9	Lost core							
82.9-87.9	Red jasper I.F.							
87.7-90	Lost core							
90-96	Black - white banded I.F. - some limonite							
96-96.9	Lost core							
96.9-97.1	Gray banded I.F.							
97.1-98.7	Lost core							
98.7-100	Gray - white banded I.F.							
100-105	Gray - " " I.F.							
105-105.5	Limonite and goethite							

Buff indicates lean cherts siderite

C.A. Allen

ALGOMA ORE PROPERTIES LIMITED

EXPLORATION DEPARTMENT

DIAMOND DRILL HOLE NO. **1A.**

PROPERTY **GROUNDHOG RIVER**

LOCATION OF COLLAR

ELEV.

AZIMUTH AT COLLAR.

DIP AT COLLAR.

VERTICAL SECTION NO.

LENGTH

CORE SIZE.

REC. IN MIN. ZONE.

LOGGED BY.

STARTED.

FINISHED.

C.P.-10420-51

FOOTAGE	DESCRIPTION	SAMPLING			ANALYSES			
		FROM	TO	REC.				
105.5-106.8	White cherts I.F.	3%						
106.8-107	2" goethite							
107-107.2	White cherts I.F.	3%						
107.2-108.2	Lost core							
108.2-110.2	White chert and bands of goethite 1/16 - 1/4" wide	0%						
110.2-110.5	Lost core							
110.5-111.1	Gray I.F.	0%						
111.1-112.0	Lost core							
112.0-115.0	Gray I.F. very fine bands some ore limonite	3%						
115.0-116.3	Lost core							
116.3-116.5	Gray I.F.	0%						
116.5-117.6	lost core							
117.6-120.3	Gray banded I.F.	10%						
120.3-125	Lost core no visible martite bands in above box							
125-134	Gray banded I.F.	15%						
134-135	Lost core							
135-137	Gray banded I.F.	15%						
137-140	Lost core							
140-142.8	Gray banded I.F.	5%						
142.8-145	Lost core							
145-147	Gray banded I.F.	3%						
147-148.2	Buff-white I.F.	2%						
148.2-148.9	Gray I.F.	25%						
148.9-150	Intermixed goethite I.F.	2%						
150-157	Split - remaining core as could best be put together shows very poor I.F. and wood indicating lost core							

Core stored in the south-west part of S-2450 - 200' from River at Killis camp site.

CH. [Signature]