



42B01NE0162 63.1102 KEITH

010

Report of Magnetometer Survey  
on Claims S-107243 and S-107237  
Groundhog River

Location and Access

The claim group is located in the northeast quarter of Keith Twp., Sudbury District. The main line of the C.N.R. crosses the west end of the property. Joburke Station is 1000' south of the property.

Reason for Survey

The survey was carried out to delineate and record the magnetic intensity of a band of iron formation.

Results of Survey

The survey accomplished its purpose and the results are shown in plan on the accompanying map.

Type of Instrument

The instrument used was a "Sharpe" model A-2, vertical force magnetometer - 20 gammas per scale division.

Instrument Operator

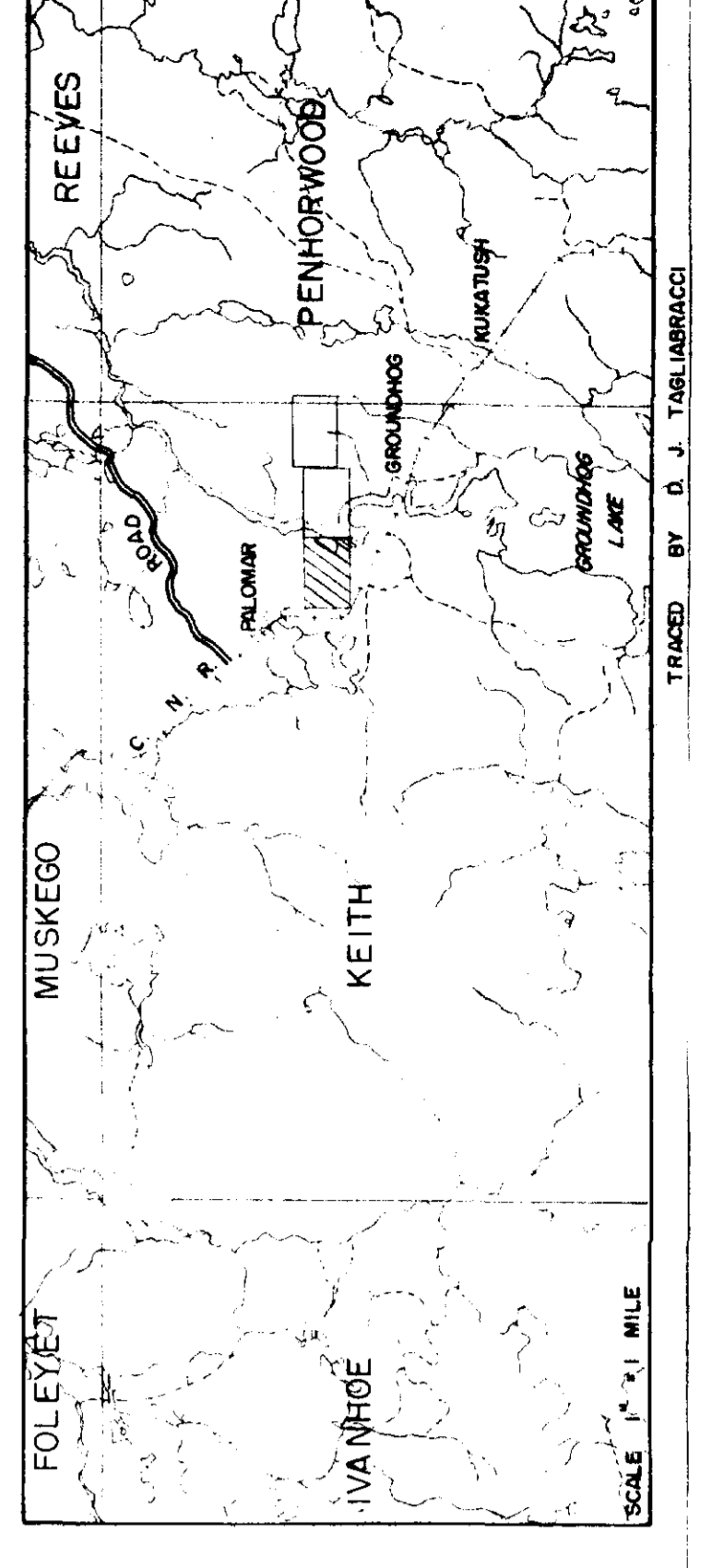
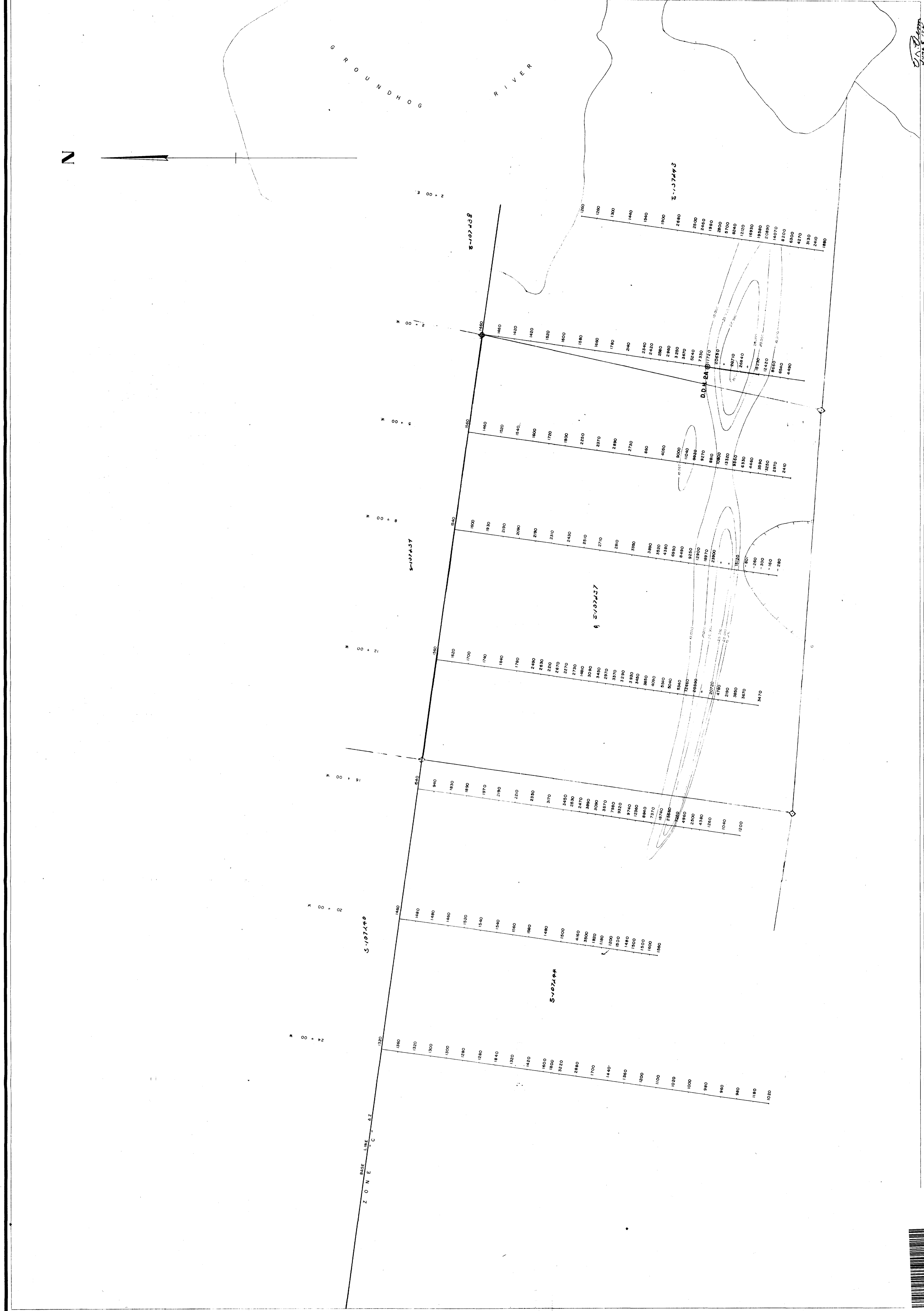
V. R. Venn, Sault Ste. Marie, Ontario.

Qualifications

1. B.Sc. Geological Engineering
2. Fieldman, 4 years with Algoma Ore Properties, Sault Ste. Marie, Ontario.

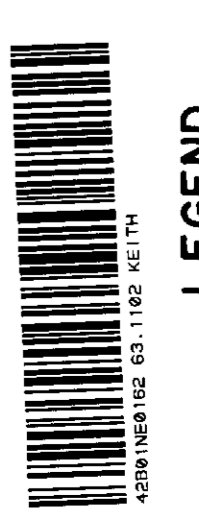
Method of Survey

A grid was laid out as shown on the accompanying maps. This grid involved 6,215 feet of cut, chained and picketed lines. Stations were established at intervals of 25 and 50 feet as was warranted. 143 stations were read.



ALGOMA ORE PROPERTIES LTD.  
 EXPLORATION DEPARTMENT  
 MAGNETOMETER SURVEY  
**GROUNDHOG RIVER IRON FORMATION**  
 KEITH TOWNSHIP, SUDBURY DISTRICT

SCALE: 1" = 100'  
 MARCH 16, 1960  
 SHEET NO. 1



LEGEND

- INSTRUMENT - SHARPE MODEL A-2 MAGNETOMETER
  - READINGS IN GAMMAS
  - OFF SCALE READINGS
  - 20000 GAMMAS + (OVER 27700 OFF SCALE)
  - 20,000 - 20000 GAMMAS
  - 10,000 - 20,000 GAMMAS
  - NEGATIVE READINGS
- CLON CONINGS  
 CLON LINES
- V.R. VEIN  
 MARCH 3, 1960