



42B01NW0016 11 MUSKEGO

010

Diamond Drilling

Township of MUSKEGO

Report NO: 11

Work performed by: Mid-North Engineering

Claim NO	Hole NO	Footage	Date	Note
S 279196	1	429.0'	Jan/71	(1)
S 279193	2	405.0'	Jan/71	(1)
S 279194	3 <i>/3</i>	455.0' <i>/1289'</i>	Jan/71	(1)

Notes:

(1) #102-71

# DIAMOND DRILL RECORD

PROPERTY UNITED MARCELE MINES LTD HOLE NO. 1  
MUSKEGO TWP

SHEET NUMBER 1 of 5 SECTION FROM \_\_\_\_\_ TO \_\_\_\_\_ STARTED \_\_\_\_\_  
 LATITUDE 1750 5 DATUM \_\_\_\_\_ COMPLETED \_\_\_\_\_  
 DEPARTURE 0700 BEARING N 45° W ULTIMATE DEPTH 429.0'  
 ELEVATION \_\_\_\_\_ DIP -45° PROPOSED DEPTH \_\_\_\_\_

DEPTH FEET	FORMATION	SAMPLE NO.	WIDTH OF SAMPLE	GOLD \$	SLUDGE GOLD \$
2.0' - 10.0'	(1751116)				
43.1'	Medium to fine grain, light grey, feebly banded, acid gneiss (Granodiorite?) white feldspar, sugary qtz., pale pink feldspar, dk. green to mag. (hornblende?) very pale pink chloritoid. Occasional zone feldspar up to 2 cm, or min. 34.0' - 38.0' - broken core.				
44.7'	Para gneiss - med. to fine grained, strongly foliated, grey. Pale green feldspar, clear qtz., ferro mag. (hornblende?). Abundant pyrite, introduced epidote. - isocrate. 1mm pastilles, pale brown secondary carb.				
48.6'	Granodiorite(?) med. to fine grained, feebly banded, light grey, gneissic. Sugar qtz., feldspar, minor green ferro mag. (biotite & hornblende?). Secondary clear qtz., fractured. Introduced minerals: pyrite, pale brown sulphide, (may be sphalerite), pale green mineral, rust.				

# DIAMOND DRILL RECORD

PROPERTY UNITED MACKIE MINES LTD HOLE NO. 1

MUSKEGO TWP

SHEET NUMBER 2 of 5 SECTION FROM \_\_\_\_\_ TO \_\_\_\_\_ STARTED \_\_\_\_\_  
 LATITUDE \_\_\_\_\_ DATUM \_\_\_\_\_ COMPLETED \_\_\_\_\_  
 DEPARTURE \_\_\_\_\_ BEARING \_\_\_\_\_ ULTIMATE DEPTH \_\_\_\_\_  
 ELEVATION \_\_\_\_\_ DIP \_\_\_\_\_ PROPOSED DEPTH \_\_\_\_\_

DEPTH FEET	FORMATION	SAMPLE NO.	WIDTH OF SAMPLE	GOLD \$	SLUDGE GOLD \$
48.6' - 57.7'	Med. to fine grained, feebly banded, light grey acid gneiss (granodiorite?). White feldspar, sugar qtz., green ferromag. (hornblende?), very pale green chlorite(?) Abundant white feldspar crystals 1-3 mm., larger specimens zoned, probably secondary. Numerous 5mm pale brown feldspar grainlets with indefinite boundaries. The white feldspars occur in the veinlets and probably postdate - no mineralization.				
76.5'	Fine grained, strongly foliated grey-green paragneiss. Cross bedding averages 60° to 80° (varies 40°-70°) qtz, feldspar, chlorite, black ferromag. Intruded by granitic material similar to section immediately above. Discrete very dark green 2-5mm pyroxene(?) crystals (may be amphibolite fragments) in clusters, layers or scattered in the metaseds and granite. Sulphides primarily in irregular fractures and associated with hematite banding for 0.2' @ 68.0'				

N.M.P. TORONTO-STOCK FORM NO. 501 REV. 12/51

DRILLED BY \_\_\_\_\_ SIGNED \_\_\_\_\_

# DIAMOND DRILL RECORD

PROPERTY UNITED MACFIE MINES LTD. HOLE NO. 1  
MUSKEGO TWP.

SHEET NUMBER 3 of 5 SECTION FROM \_\_\_\_\_ TO \_\_\_\_\_ STARTED \_\_\_\_\_  
 LATITUDE \_\_\_\_\_ DATUM \_\_\_\_\_ COMPLETED \_\_\_\_\_  
 DEPARTURE \_\_\_\_\_ BEARING \_\_\_\_\_ ULTIMATE DEPTH \_\_\_\_\_  
 ELEVATION \_\_\_\_\_ DIP \_\_\_\_\_ PROPOSED DEPTH \_\_\_\_\_

DEPTH FEET	FORMATION	SAMPLE NO.	WIDTH OF SAMPLE	GOLD \$	SLUDGE GOLD \$
76.5' - 229.5'	<i>Metasediments intruded by granite</i>				
	<i>76.5' - 112.5'</i>				
	<i>112.5' - 113.3'</i>				
	<i>113.3' - 123.7'</i>				
	<i>123.7' - 126.2'</i>				
	<i>126.2' - 128.5'</i>				
	<i>128.5' - 130.5'</i>				
	<i>130.5' - 167.9'</i>				
	<i>167.9' - 176.2'</i>				
	<i>176.2' - 187.4'</i>				
	<i>187.4' - 192.9'</i>				
	<i>192.9' - 207.6'</i>				
	<i>207.6' - 229.5'</i>				
	<i>sections less than 0.5' not noted.</i>				
	<i>Metasects: fine grained, strongly foliated, slightly cross bedded, light grey and grey-green, honey in places. Some sections with stumps Flysch.</i>				
	<i>FOLIATION 50°-70° to LCA. Qtz, feldspar ± chlorite, ± ferromag. Various sulphides interbanded, probably primary with some remobilization into fractures</i>				

N.M.P., TORONTO—STOCK FORM NO. 501 REV. 12/51

DRILLED BY \_\_\_\_\_ SIGNED \_\_\_\_\_

# DIAMOND DRILL RECORD

PROPERTY UNITED MACFIE MINES LTD.  
MUSKEGO TWP.

HOLE NO. 1

SHEET NUMBER 4 OF 5 SECTION FROM \_\_\_\_\_ TO \_\_\_\_\_ STARTED \_\_\_\_\_  
 LATITUDE \_\_\_\_\_ DATUM \_\_\_\_\_ COMPLETED \_\_\_\_\_  
 DEPARTURE \_\_\_\_\_ BEARING \_\_\_\_\_ ULTIMATE DEPTH \_\_\_\_\_  
 ELEVATION \_\_\_\_\_ DIP \_\_\_\_\_ PROPOSED DEPTH \_\_\_\_\_

DEPTH FEET	FORMATION	SAMPLE NO.	WIDTH OF SAMPLE	GOLD \$	SLUDGE GOLD \$
76.5 - 229.0 (continued)	Granitic sections: some concordant, some transgressive. Med. to fine grained, massive to moderately foliated, light grey. White feldspar, clear qtz., dk. green ferromag. (hornblende?), pale green chloritoid. Very little fracturing. Few qtz. & calcite stringers.				
289.6'	Shear zone - sections of up to 6.6' concordant & transgressive granite (similar to granite in previous section) Med. to fine grained, strongly and evenly foliated, 65° to LCH. Grey, weakly magnetic. Qtz., feldspar, chlorite, black ferromag., disseminated sulphides. Qtz stringers @ 260.0' - 263.0' & 284.0' - 287.5' (i-2 mm. pink garnets) 289.0 - 289.6 partly sheared meta sedts.				
364.0	Medium to fine grained, slightly foliated acid orthogneiss (granodiorite?), clear qtz., dk. green ferromag. (hornblende?). Accessory pyrite, pale green chloritoid(?) Rather more hornblende in upper sections.				

# DIAMOND DRILL RECORD

PROPERTY UNITED MACFIE MINES LTD. HOLE NO. 1

SHEET NUMBER 5 of 5 SECTION FROM \_\_\_\_\_ TO \_\_\_\_\_ STARTED \_\_\_\_\_  
 LATITUDE \_\_\_\_\_ DATUM \_\_\_\_\_ COMPLETED \_\_\_\_\_  
 DEPARTURE \_\_\_\_\_ BEARING \_\_\_\_\_ ULTIMATE DEPTH \_\_\_\_\_  
 ELEVATION \_\_\_\_\_ DIP \_\_\_\_\_ PROPOSED DEPTH \_\_\_\_\_

DEPTH FEET	FORMATION	SAMPLE NO.	WIDTH OF SAMPLE	GOLD \$	SLUDGE GOLD \$
289.6' - 364.0' (continued)	Secondary white felspar 1mm. - Several sections 0.2' to 2.0' grey metaseds (paragneiss) comparable to higher sections. 2mm to 1cm. brownish pink felspar veinlets crossed by hornblende and white felspar crystals.				
364.0' - 429.0'	Granodiorite(?), sheared. Gran. as in previous section plus sections 0.5' - 1.5' metaseds. Sheared to 387.0'. Much pinkish brown potash felspar primarily in less sheared sections (metasomatism?). Few thin epidote stringers. Shearing decreases after 399'. @ 404.5' - 405.0', 426.5' - 427.5' 1-2mm pale green crystals (secondary pressure mineral?)				
	429.0' - END OF HOLE				
	CORE STORED AT CORALT REFINERY, CORALT, ONT.				

N.M.P., TORONTO - STOCK FORM NO. 501 REV. 12/51

DRILLED BY Alton McKnight Drilling  
HAILEYBURY ONT.

Logged by: W. Walker.

SIGNED Copied by: [Signature]

# DIAMOND DRILL RECORD

PROPERTY UNITED MACFIE MINES LTD. HOLE NO. 2  
MUSKEGO TWP

SHEET NUMBER 1 of 3 SECTION FROM \_\_\_\_\_ TO \_\_\_\_\_ STARTED JAN. 11/71  
 LATITUDE 2+00 S DATUM \_\_\_\_\_ COMPLETED JAN. 17/71  
 DEPARTURE 2+00 W BEARING N 45° E ULTIMATE DEPTH 405'  
 ELEVATION \_\_\_\_\_ DIP -45° PROPOSED DEPTH \_\_\_\_\_

DEPTH FEET	FORMATION	SAMPLE No.	WIDTH OF SAMPLE	GOLD \$	SLUDGE GOLD \$
0.0' - 34.0'	CASING				
37.5'	Sheared paragneiss, shear @ 85° to LCA Med. to fine grain, strongly & evenly foliated; grey qtz, feldspar, chlorite black terrabag, dissem. sulphides minor sections granite				
40.4'	Sheared granodiorite				
91.1'	Granodiorite(?) - light grey, med. grain, massive or feebly foliated. white & pale buff qtz, feldspar, dk. green biotite. Occasional hairline qtz(?) stringer 46.7' - 47.5' sheared paragneiss				
113.2'	Fine grained, finely bedded, dk. grey meta siltstone with occasional pale green interbeds. Bedding @ 80° to long core axis, minor cross-bedding. Re-crystallization has produced some garnets. Some fragments may be meta morphic minerals or detrital. Much chloride, scattered sulphides				

N.M.P., TORONTO-STOCK FORM NO. 501 REV. 12/51

DRILLED BY \_\_\_\_\_ SIGNED \_\_\_\_\_

# DIAMOND DRILL RECORD

PROPERTY UNITED MACFIE MINES LTD HOLE NO. 2  
MUSKIEGO TWP.

SHEET NUMBER 2 of 3 SECTION FROM \_\_\_\_\_ TO \_\_\_\_\_ STARTED \_\_\_\_\_  
 LATITUDE \_\_\_\_\_ DATUM \_\_\_\_\_ COMPLETED \_\_\_\_\_  
 DEPARTURE \_\_\_\_\_ BEARING \_\_\_\_\_ ULTIMATE DEPTH \_\_\_\_\_  
 ELEVATION \_\_\_\_\_ DIP \_\_\_\_\_ PROPOSED DEPTH \_\_\_\_\_

DEPTH FEET	FORMATION	SAMPLE No.	WIDTH OF SAMPLE	GOLD \$	SLUDGE GOLD \$
91.1' - 113.2'	44.7' - 95.0' - introduced minerals including cher & pyrite. Several similar shorter zones. 102.3' - 103.2', 107.2' - 110.7' - granodiorite.				
137.3'	Paragneiss - sheared @ 85° to LCA.				
155.8'	Paragneiss continues as another side of sheared zone. Sections .05 to .03 of cherty fractures.				
201.3'	Sheared zone - primarily dk. gray silt-stone. Some lighter sections may be sheared meta-arkose or sheared granodiorite. Several short sections massive granodiorite & qtz. - 141.0' - 141.6' with acicular green mineral. Green cherty sections also sheared. 180.0' - 186.2' - several bands of sulphides from .05' to .4' wide pyrite, sphalerite, chalcopyrite not sheared. In upper sections shearing about 80° to LCA. Lower section 20°. Minor post				

N.M.P., TORONTO - STOCK FORM NO. 501 REV. 12/51 Shearing of vein lets.

DRILLED BY \_\_\_\_\_ SIGNED \_\_\_\_\_



# DIAMOND DRILL RECORD

PROPERTY UNITED MACFIE MINES LTD. HOLE NO. 2  
MUSKEGO TWP.

SHEET NUMBER 3 OF 3 SECTION FROM \_\_\_\_\_ TO \_\_\_\_\_ STARTED \_\_\_\_\_  
 LATITUDE \_\_\_\_\_ DATUM \_\_\_\_\_ COMPLETED \_\_\_\_\_  
 DEPARTURE \_\_\_\_\_ BEARING \_\_\_\_\_ ULTIMATE DEPTH \_\_\_\_\_  
 ELEVATION \_\_\_\_\_ DIP \_\_\_\_\_ PROPOSED DEPTH \_\_\_\_\_

DEPTH FEET	FORMATION	SAMPLE NO.	WIDTH OF SAMPLE	GOLD \$	SLUDGE GOLD \$
201.3' - 224.3'	Granodiorite - much salmon-pink felspar From 203.0' - 204.7' coarse grained and @ lower contact.				
300.0'	Sheared meta-siltstone - shearing @ 75° to LCA Several short sections massive granodiorite, especially in last 5' 227.2' - 227.6'; 245.4' - 246.4' much secondary pink felspar.				
405.0'	Granodiorite 340.0' - 346.8' - chertified meta-siltstone, several shorter sections. Sheared sections 352.4' - 353.6', 354.5' - 355.9', 357.1' - 357.6', 371.0' - 373.0', 374.1' - 374.4', 388.0' - 396.7', much salmon pink felspar especially heavy @ 389.6' - 392.2'  405.0' - END OF HOLE				
Core stored @ COBALT REFINERY, COBALT, ONT.					

N.M.P., TORONTO-STOCK FORM NO. 501 REV. 12/51

DRILLED BY ALTON MCKNIGHT DRILLING  
HAILEYBURY, ONT.

Logged by: W. Walker  
 Copied by: [Signature]  
 SIGNED

# DIAMOND DRILL RECORD

PROPERTY UNITED MACFIE MINES HOLE NO. 3  
MUSKEGO TWP. PROP

SHEET NUMBER 1 SECTION FROM \_\_\_\_\_ TO \_\_\_\_\_ STARTED JAN. 22/71  
 LATITUDE 200' N DATUM \_\_\_\_\_ COMPLETED JAN. 27/71  
 DEPARTURE LINE 0700 BEARING S 45° W ULTIMATE DEPTH 455'  
 ELEVATION \_\_\_\_\_ DIP 45° PROPOSED DEPTH \_\_\_\_\_

DEPTH FEET	FORMATION	SAMPLE NO.	WIDTH OF SAMPLE	GOLD \$	SLUDGE GOLD \$
0.0' - 18.0'	CASING.				
19.0'	ALT. SED'S - dark grey, med. grain c/a 30°				
49.0	GRANITE - med. grain - white fels., locally pink, med. dark minerals, inclusion alt. sed's, frequency increasing ↑ 49'. @ 20.5' - open fract. @ 21.5' - " " "				
67.5	ALT. SED'S - med. grain, greenish, med. epidote, weak dissem. py. c/a 10° - 30°				
74.5	GRANITE - med. grain, med. dark min.				
86.0	ALT. SED'S. - strong epid. alt., med. dissem. pyrite, dykelets fels. porph.				
90.0	GRANITE - med. grain, white fels., med. dark min..				
93.7	FELS. PORPH. - inclusion alt. sed's. weak dissem. pyrite				
126.8	ALT. SED'S. - med. grain, greenish, med. epid. weak to med. pyrite, gran. sections @ 113' - 04' med. pyrite, chalc. c/a 15° - 40°				

N.M.P., TORONTO - STOCK FORM NO. 301 REV. 12/51

DRILLED BY \_\_\_\_\_ SIGNED \_\_\_\_\_

# DIAMOND DRILL RECORD

PROPERTY UNITED MACQUE MINES HOLE NO. 3  
MUSKEGO TWP. PROP.

SHEET NUMBER 2 SECTION FROM \_\_\_\_\_ TO \_\_\_\_\_ STARTED \_\_\_\_\_  
 LATITUDE \_\_\_\_\_ DATUM \_\_\_\_\_ COMPLETED \_\_\_\_\_  
 DEPARTURE \_\_\_\_\_ BEARING \_\_\_\_\_ ULTIMATE DEPTH \_\_\_\_\_  
 ELEVATION \_\_\_\_\_ DIP \_\_\_\_\_ PROPOSED DEPTH \_\_\_\_\_

DEPTH FEET	FORMATION	SAMPLE NO.	WIDTH OF SAMPLE	GOLD \$	SLUDGE GOLD \$
126.8 - 131.0'	GRANITE - White, med. grain, wk. dark min.				
146.0'	ALT. SEDS. - med. grain, siliceous, med. dissemin. pyrite, local streaks py., weak chalc.				
	@140' - 1.0' strong biotite.				
167.5'	ALT. SEDS. - med. grain, greenish, weak local pyrite, occ. speck chalc.				
	dip $\pm 45^\circ$				
170.5'	GRANITE - white fels., med. dark min., occ. speck pyrite, chalc.				
192.5'	GRANITE - porphyritic, white to pink fels.				
209.0'	ALT. SEDS. - med. grain, greenish (med. epid.) occ. dyklets granite.				
250.0'	ALT. SEDS. - grey, med. to fine grain, weak local pyrite				
	@245.0-246.2 - med. dissemin. & streaks pyrite, chalc. & pyrr.				
315.0	ALT. SEDS. - grey, med. grain, streaks epid., weak pyrr., pyrite, very occ. speck chalc. - occ. section granite				
	@312' - 0.5' - epidote with weak pyrite,				

N.M.P., TORONTO - STOCK FORM NO. 501 REV. 12/51

V0994

DRILLED BY \_\_\_\_\_ SIGNED \_\_\_\_\_

# DIAMOND DRILL RECORD

PROPERTY UNITED MACEIE MINES HOLE NO. 3  
MUSKEGOTWP. PROP.

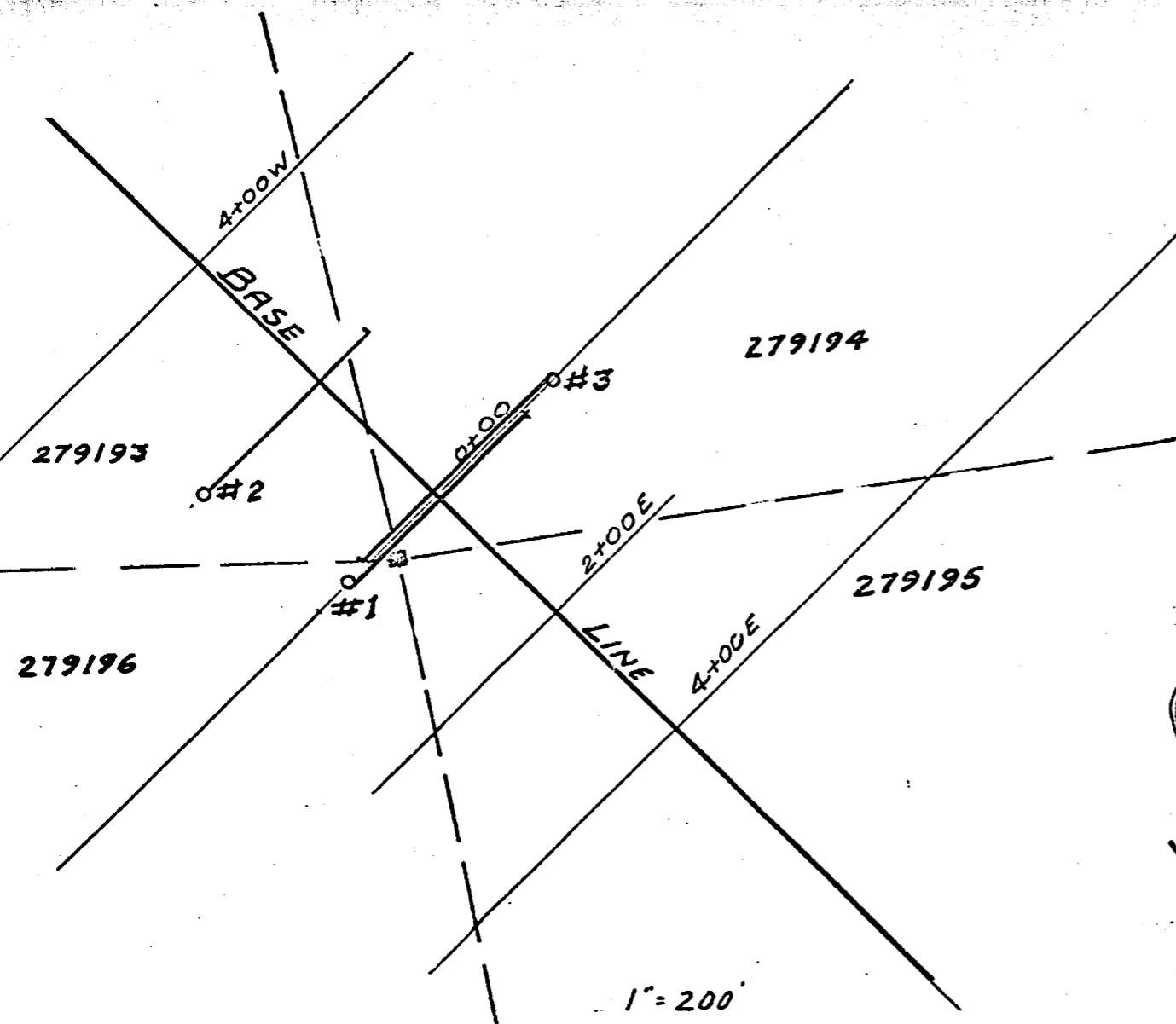
SHEET NUMBER 3 SECTION FROM \_\_\_\_\_ TO \_\_\_\_\_ STARTED \_\_\_\_\_  
 LATITUDE \_\_\_\_\_ DATUM \_\_\_\_\_ COMPLETED \_\_\_\_\_  
 DEPARTURE \_\_\_\_\_ BEARING \_\_\_\_\_ ULTIMATE DEPTH \_\_\_\_\_  
 ELEVATION \_\_\_\_\_ DIP \_\_\_\_\_ PROPOSED DEPTH \_\_\_\_\_

DEPTH FEET	FORMATION	SAMPLE NO.	WIDTH OF SAMPLE	GOLD \$	SLUDGE GOLD \$	SILVER \$
315.0 - 318.5'	ALT. SEDS - grey, med. grain, no banding					
325.8'	GRANITE - white fels.					
	Upper contact - 40°					
	Lower " 20°					
455.0'	Seds - fine to med. grain, <sup>grey</sup> weak banding (horablende gneiss) very weak fine pyrite, occasional granite.					
	@ 401' - siliceous mat, med. pyrite					
	@ 451' - 1.0' chloritized, weak pyrite					
	END OF HOLE - 455.0'					
		49.0' - 55.0'	51	6.0'	NIL	TR
		55.0' - 60.0'	52	5.0'	NIL	TR
	CORE STORED AT COBALT REFINERY, COBALT.	60.0' - 67.5'	53	7.5'	TR	TR
		74.5' - 80.0'	54	5.5'	TR	TR
		82.0' - 86.0'	55	4.0'	TR	TR
		112.5' - 117.0'	56	4.5'	TR	TR
		131.0' - 137.8'	57	6.8'	TR	TR
		141.6' - 147.5'	58	0.9'	NIL	TR

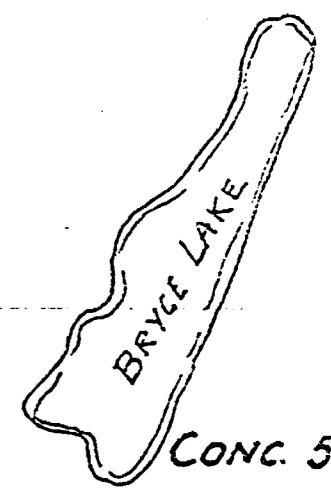
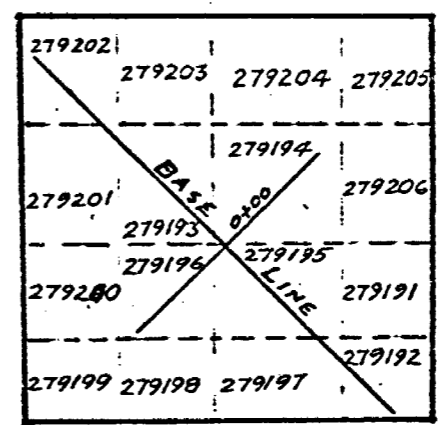
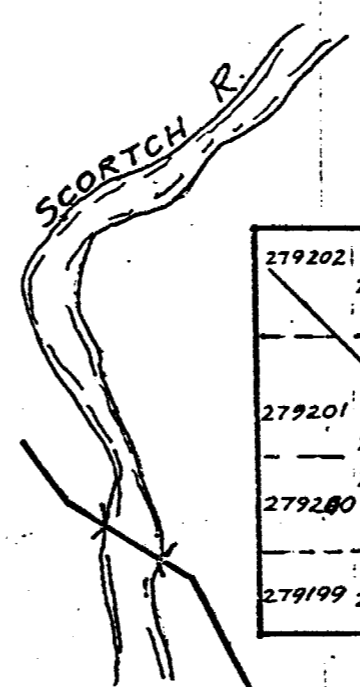
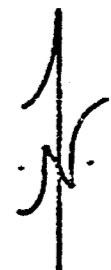
N.M.P. TORONTO-STOCK FORM NO. 501 REV. 12/51

DRILLED BY ALTON MCKNIGHT DRILLING  
HAILEYBURY, ONT.

SIGNED [Signature]



L.11 L.10 L.9



CONC. 5

CONC. 4

1" = 40 chs.

HWY. 101

UNITED MACFIE MINES LTD.

MUSKEGO TWP.

PORCUPINE MINING DIVISION

April 19/71

