



42B01NW0043 48 KEITH

010

DIAMOND DRILLING

TOWNSHIP: KEITH TWP.

REPORT NO: 48

WORK PERFORMED FOR: Dome Exploration Ltd.

RECORDED HOLDER: Same as Above [xx]
: Other []

| <u>Claim No.</u> | <u>Hole No.</u> | <u>Footage</u> | <u>Date</u> | <u>Note</u> |
|-------------------|-----------------|----------------|-------------|-------------|
| P 595862 | 182-2 | 518' | Jan/83 | (1)(2) |
| 595859-860 | 182-3 | 310' | Jan/83 | (1)(2) |
| 595858 | 182-4 | 304' | Jan/83 | (1)(2) |
| 595853 | 182-5 | 317' | Jan/83 | (1)(2) |
| 595846, 595860 | 182-6 | 320' | Jan/83 | (1)(2) |
| 595845 | 182-7 | 304' | Jan/83 | (1)(2) |
| 595594-595 | 182-10 | 478' | Jan-Feb/83 | (1)(2) |

Notes: (1) #15/84
(2) This file went missing in Nov/88 - it was replaced with a copy from the Regional Office (Nov/88) - the Regional copy did not have hole 182-1.

DOME EXPLORATION (CANADA) LIMITED

| LOCATION: 258W, 17+60S, From collar to Post #1 Claim P.595862, 63°N & 23°E | | DIAMOND DRILL RECORD | | | | HOLE NO 182-2 | | | | | |
|---|--|---|-----------------------|--|--------|--------------------|------|---------|---------|--|--|
| AZIMUTH: 180° | | PROPERTY: PROJECT 182 - Keith and Muskego Townships, Ontario | | | | CLAIM NO: P.595862 | | | | | |
| DIP: -45° | LENGTH: 518' | ELEVATION: | | CLAIM NO: P.595862 | | | | | | | |
| STARTED: January 16, 1983 | CORE SIZE: AQ | SYSTEM OF MEASURE: IMPERIAL | | SECTION: | | | | | | | |
| COMPLETED: January 17, 1983 | DIP TESTS (CORRECTED): at 518' -27°15' | | LOGGED BY: B. Needham | | | | | | | | |
| PURPOSE: GEOLOGICAL CROSS SECTION | | | | DATE LOGGED: January 1983 | | | | | | | |
| FOOTAGE from to | DESCRIPTION | SAMPLE | | | | Au dwt/ton | Ag | Cu % | Zn % | | |
| | | No. | from | to | Length | | | | | | |
| 0.0 | 12.0 | CASING IN OVERBURDEN | | | | | | | | | |
| 12.0 | 53.0 | CALC-ALKALINE ANDESITE: Massive, medium grey green, fine to medium grained, hardness 4, uniform massive texture, slight chloritization, 1-2% quartz and quartz carbonate stringers, at 40 to 80° to core axis (variable), indistinct lower contact (i.e. between 53-63.6'), light to moderate carbonatization (ankerite). | | | | | | | | | |
| | | | 13.9-16.3: | 14.4, 16.2: | 59792 | 13.9 | 16.3 | 2.4 | Tr | | |
| | | | 29.6-30.6: | 4" quartz carbonate vein, minor sericite | 59793 | 29.6 | 30.6 | 1.0 | Tr | | |
| 53.0 | 111.5 | CALC-ALKALINE ANDESITE: Flow, medium green, fine grained, hardness 3-1/2, criss-crossed by carbonate and quartz carbonate stringers, minor thicker bands of extensive carbonate impregnation, moderately chloritized, slight to moderate schistosity, trace - 1% disseminated pyrrhotite; from 53 to 63.6', 2% carbonate and quartz carbonate stringers; from 94.4 to 111.5' massive flow lenses within the flow. | | | | | | | | | |
| | | | 63.6-67.1: | 15% carbonate and quartz carbonate stringers (irregular orientation) | 59794 | 63.6 | 67.1 | 3.5 | Tr | | |

ASSESSMENT WORK
T-2465

DOME EXPLORATION (CANADA) LIMITED

| | | | | | | | | | |
|--|--|--|---|--|-----------------------------|--|----------------------------|---------------------------|--|
| LOCATION: L292W, 15+80S, from #2 Post claim P.595859 to collar 42'N and 300'W | | | DIAMOND DRILL RECORD | | | | HOLE NO 182-3 | | |
| AZIMUTH: 185° | | | PROPERTY: PROJECT 182 - Keith and Muskego Townships, Ontario | | | | CLAIM NO: P.595859 - 59.4' | | |
| DIP: -45° | | | LENGTH: 310' | | ELEVATION: | | P.595860 - 250.6' | | |
| STARTED: January 17, 1983 | | | CORE SIZE: AQ | | SYSTEM OF MEASURE: IMPERIAL | | SECTION: | | |
| COMPLETED: January 18, 1983 | | | DIP TESTS (CORRECTED): -- | | | | LOGGED BY: B. Needham | | |
| PURPOSE: TO TEST H.E.M. ANOMALY AT L292W 17+60S | | | | | | | | DATE LOGGED: January 1983 | |

| FOOTAGE | | DESCRIPTION | SAMPLE | | | | Au dwt/ton | Ag | Cu % | Zn % | | |
|---------|------|---|--------|------|------|--------|---------------|----|---------|---------|--|--------------------|
| from | to | | No. | from | to | Length | | | | | | |
| 0.0 | 8.0 | CASING IN OVERBURDEN | | | | | | | | | | |
| 8.0 | 61.4 | GREYWACKE-SILTSTONE: with slaty partings, medium to dark green grey, fine grained, hardness 3-1/2 to 4, light schistosity, moderate to heavy carbonatization (ankerite), minor quartz stringers; slaty parting or wisps are frequently contorted, dark grey to black and very fine grained; foliation at 50-75° to core axis, trace pyrite. May possibly be a mafic volcanic, plots as a tholeiitic andesite. | | | | | | | | | | |
| | | 34.3-38.8: 2-3% quartz carbonate stringers, trace pyrite and pyrrhotite. | | | | | | | | | | SPCICIMEN AT 38.3' |
| | | 44.5-47.1: 1% quartz carbonate stringers, core locally pitted and rusty, trace pyrrhotite stringers | 59820 | 44.5 | 47.1 | 2.6 | Tr | | | | | |
| | | 49.5-50.5: 1" carbonatized band, trace pyrrhotite stringers. | 31289 | 49.5 | 50.5 | 1.0 | N11 | | | | | |
| | | 56.4-61.4: Mafic tuff, heavy carbonatization, trace fine pyrrhotite stringers and blebs, chloritic bands | 31290 | 56.4 | 61.4 | 5.0 | N11 | | | | | |
| 61.4 | 93.7 | HIGH Fe THOLEIITIC BASALT: Carbonatized - medium grey green, fine grained, hardness 3-1/2 to 4, moderate carbonatization, disseminated rounded amygdules, foliation at 55-60°, trace - 2% fine grained | | | | | | | | | | |

T2465
 ASSESSMENT WORK

DOME EXPLORATION (CANADA) LIMITED
DIAMOND DRILL RECORD

HOLE No: 182-3

PAGE No: 2 of 5

| FOOTAGE from | to | DESCRIPTION | SAMPLE | | | | Au dwt/ton | Ag | Cu % | Zn % | Ni ppm |
|-----------------|-------|---|--------|-------|-------|--------|---------------|----|---------|--------------------|-----------|
| | | | No | from | to | Length | | | | | |
| | | pyrrhotite and pyrite stringers (usually parallel to foliation and/or carbonate bands or stringers), slight to moderate chloritization, trace carbonate stringers, light schistosity. | | | | | | | | | |
| | | 61.4-66.4: Trace - 1% pyrrhotite stringers. | 31291 | 61.4 | 66.4 | 5.0 | N11 | | | 44 | |
| | | 68.1-72.1: 1-2% pyrrhotite ± pyrite stringers concentrated in 0.3-0.4' carbonarized bands at 68.7, 70.0 and 71.0'. | 59821 | 68.1 | 72.1 | 4.0 | Tr | | | 52 | |
| | | 78.5-81.5: Similar to 68-72': carbonate bands at 78.6, 80.4 and 81.1'. | 59822 | 78.5 | 81.5 | 3.0 | Tr | | | | |
| | | 83.1-85.9: 10-15% carbonate impregnation, 3% pyrite + pyrrhotite stringers and grains. | 59823 | 83.1 | 85.9 | 2.8 | Tr | | | 50 | |
| | | 89.1-92.2: 2% carbonate stringers, 1-2% pyrite + pyrrhotite stringers, lower 5" heavily chloritized and carbonatized. | 59824 | 89.1 | 92.2 | 3.1 | Tr | | | | |
| 93.7 | 107.8 | SILICIFIED ZONE (DACITE TUFF): Light to medium green grey, fine grained, hardness > 5; quartz veins or stringers at 94.4, 100.9, 101.4-101.9, 102.1, 104.6; 2-3% pyrite and pyrrhotite blebs and veins, slight chloritization, slight schistosity | | | | | | | | SPECIMEN AT 106.3' | |
| | | 93.7-98.7: 1% pyrite and pyrrhotite blebs and veinlets, slight carbonatization. | 59825 | 93.7 | 98.7 | 5.0 | N11 | | | | |
| | | 98.7-103.2: 6" quartz vein, trace-1% pyrite and pyrrhotite veinlets at 5-10°. | 59826 | 98.7 | 103.2 | 4.5 | N11 | | | | |
| | | 103.2-105.9: 5% massive stringer and blebs in intensely silicified zones. | 59827 | 103.2 | 105.9 | 2.7 | | | | 33 | |

ASSESSMENT WORK

T-2465

DOME EXPLORATION (CANADA) LIMITED
DIAMOND DRILL RECORD

HOLE NO: 182-3
PAGE NO: 3 of 5

| FOOTAGE | | DESCRIPTION | SAMPLE | | | | Au dwt/ton | Ag | Cu % | Zn % | Ni ppm |
|---------|-------|---|--------|-------|-------|--------|---------------|----|---------|---------|-----------|
| from | to | | NO | from | to | Length | | | | | |
| 107.8 | 132.5 | THOLEIITIC MAFIC TUFF: Carbonatized, medium green, fine grained with medium grained rounded carbonate amygdules, hardness 4, light to moderate schistosity moderate to heavy carbonatization (ankerite), 2-3% carbonate stringers at 50°, foliation at 60°, trace to 2% pyrrhotite ± pyrite stringers, considerably more tuffaceous from 124.2 to 132.5'. | | | | | | | | | |
| | | 107.8-110.9: as above. | 59828 | 107.8 | 110.9 | 3.1 | N11 | | | | |
| | | 112.0-114.9: 1-2% pyrrhotite stringers, 1-2% carbonate stringers. | 59829 | 112.0 | 114.9 | 2.9 | N11 | | | | |
| | | 118.1-121.8: Heavily carbonatized, 1% pyrrhotite ± pyrite stringers, 3% carbonate stringers. | 59830 | 118.1 | 121.8 | 3.7 | N11 | | | | |
| | | 125.4-127.5: 4" sulphide (1%) and carbonate band at 126.9; 2% carbonate stringers. | 59831 | 125.4 | 127.5 | 2.1 | N11 | | | | |
| | | 131.7-132.6: 1% carbonate stringers. | 31216 | 131.7 | 132.6 | 0.9 | Tr | | | | |
| 132.5 | 135.0 | RHYOLITE TUFF: Light green, fine grained, hardness 4-1/2 to 5-1/2, moderate carbonatization, foliation at 55-65°, moderate schistosity, 10-15% pyrrhotite ± pyrite finely disseminated grains and blebs parallel to foliation. | | | | | | | | | |
| | | 132.6-135.0: as above. | 31217 | 132.6 | 135.0 | 2.4 | Tr | | | 61 | |
| 135.0 | 143.2 | SILICIFIED ZONE: Mafic volcanic(?) medium to dark green, fine grained, hardness 4-1/2, heavy silicification locally, moderate carbonatization, moderate to heavy chloritization, micaceous (biotite) adjacent to quartz impregnated zones, massive to semi-massive pyrrhotite + pyrite at 137.2-138.3, 139.0-140.5, 141.8-143.2'. | | | | | | | | | |

ASSESSMENT WORK
1-2465

DOME EXPLORATION (CANADA) LIMITED
DIAMOND DRILL RECORD

HOLE NO: 182-3

PAGE NO: 4 of 5

| FOOTAGE from | to | DESCRIPTION | SAMPLE | | | | Au dwt/ton | Ag | Cu % | Zn % | Ni ppm |
|-----------------|-------|--|--------|-------|-------|--------|---------------|----|---------|--------------------|-----------|
| | | | № | from | to | Length | | | | | |
| | | 135.0-137.2: Silicified, minor sulphides. | 31218 | 135.0 | 137.2 | 2.2 | Tr | | | | |
| | | 137.2-140.6: 15% pyrite + pyrrhotite 1-2" bands at 50°. | 31219 | 137.2 | 140.6 | 3.4 | Tr | | | 48 | |
| | | 140.6-142.1: Mafic tuff, unmineralized. | 31220 | 140.6 | 142.1 | 1.5 | Tr | | | | |
| | | 142.1-143.2: Silicified, 7% disseminated and semi-massive stringers of pyrrhotite and pyrite. | 31221 | 142.1 | 143.2 | 1.1 | Tr | | | 53 | |
| | | 143.2-144.2: Altered ultramafic volcanic; 2% carbonate stringers. | 31222 | 143.2 | 144.2 | 1.0 | 0.20 | | | 470 | |
| 143.2 | 217.0 | KOMATIITIC BASALT-ULTRAMAFIC: Medium to dark grey green with numerous white rounded blebs and stringers disseminated through the matrix, fine to medium grained, massive texture, hardness 2-3, moderate schistosity, chloritized, 1-2% quartz carbonate (ankerite-dolomite) stringers at approximately 65° variation in colour and grain size depending on degree of serpentinization, dolomitization and talc alteration | | | | | | | | SPECIMEN AT 158.9' | |
| | | 204.0-210.0: Flow breccia; heavy serpentinization moderate to heavy talcose alteration, pitted core. | | | | | | | | SPECIMEN AT 207.2' | |
| | | 210.0-217.0: Very heavy talc alteration, numerous quartz ankerite stringers criss cross core. | 59832 | 217.0 | 221.3 | 4.3 | Nil | | | | |
| | | 223' - 1.3' of ground core. | | | | | | | | | |
| 217.0 | 310.0 | KOMATIITIC ULTRAMAFIC: Serpentinized, talcose 217.0-228.0: Dark green grey, fine grained, talcose - serpentinized matrix, euhedral dolomite grains disseminated through matrix, trace pyrite | | | | | | | | SPECIMEN AT 223.7' | |

ASSESSMENT WORK

T-2465

DOME EXPLORATION (CANADA) LIMITED
DIAMOND DRILL RECORD

HOLE No: 182-3
PAGE No: 5 of 5

| FOOTAGE | | DESCRIPTION | SAMPLE | | | | Au dwt/ton | Ag | Cu % | Zn % | | |
|---------|-------|--|--------|------|----|--------|---------------|----|---------|---------|--|--|
| from | to | | No | from | to | Length | | | | | | |
| | | blebs, hardness < 2, base of zone is very fine grained, light grey, talcose. | | | | | | | | | | |
| | | 228-233.5: Upper 2' is dacite; at 231.5 to 233.5 radiating euhedral hornblende crystals increase in density towards base, 4' of ground core at 233.5' | | | | | | | | | | |
| | | 237.0-245.0: Similar to 204-210'. | | | | | | | | | | SPECIMEN AT 243.3 |
| | | 245.0-310.0: Light green grey, fine to medium grained, hardness 3, trace - 2% quartz carbonate stringers, light to moderate schistosity, upper 17' tinted orange yellow, disseminated medium grained porphyroblasts (dolomite?), magnetic; from 270 to 276.6' fine grained serpentized zone; serpentine veins at 298.1 and 308'. | | | | | | | | | | SPECIMEN AT 271.6 SPECIMEN AT 298.6 |
| | 310.0 | END OF HOLE | | | | | | | | | | |
| | | Probable cause of H.E.M. conductor is the sulphide zones in two units uphole of the ultramafic units | | | | | | | | | | |
| | | a) 132.5-135: 10-15% pyrrhotite + pyrite in rhyolite tuff. | | | | | | | | | | |
| | | b) massive-semi massive pyrrhotite + pyrite zones at 137.2-138.3, 139-140.5, 141.8-143.2' in silicified mafic volcanic(?). | | | | | | | | | | |
| | | No significant core radioactivity or fluorescence | | | | | | | | | | |
| | | 10' of casing left in hole (making water for hole 182-4) | | | | | | | | | | |
| | | Core stored at Dome Mines Limited South Porcupine, Ontario | | | | | | | | | | |
| | | Drilling by Moderne Diamond Drilling Ltd. Val d'Or, Quebec | | | | | | | | | | |

B. McEachern

ASSESSMENT WORK
T-2465

DOME EXPLORATION (CANADA) LIMITED

| | | | | | | | |
|---|--|-----------------------------|-----------------------------------|--|--|----------------------------|--|
| LOCATION: L288W 11+80S. From Post #3 | | | DIAMOND DRILL RECORD | | | HOLE No | |
| Claim P.595858 to collar 420'N & 140'E | | | | | | 182-4 | |
| AZIMUTH: 180° | | | PROPERTY: PROJECT 182 - Keith and | | | Muskego Townships, Ontario | |
| DIP: -45° | LENGTH: 304' | ELEVATION: | CLAIM No: P.595858 | | | | |
| STARTED: January 18, 1983 | CORE SIZE: AQ | SYSTEM OF MEASURE: IMPERIAL | SECTION: | | | | |
| COMPLETED: January 19, 1983 | DIP TESTS (CORRECTED): at 304' -36°45' | | LOGGED BY: B. Needham | | | | |
| PURPOSE: TO TEST H.E.M. CONDUCTOR AT L288W 13+40S | | | DATE LOGGED: January 1983 | | | | |

| FOOTAGE from | to | DESCRIPTION | SAMPLE | | | | Au dwt/ton | Ag | Cu % | Zn % | | |
|-----------------|-------|---|--------|------|------|--------|---------------|----|---------|---------|--|-------------------|
| | | | No. | from | to | Length | | | | | | |
| 0.0 | 64.0 | CASING IN OVERBURDEN | | | | | | | | | | |
| 64.0 | 71.3 | MAFIC TUFF: Medium green, fine grained matrix with medium grained carbonate blebs, hardness 2-1/2 to 3, moderate to heavy chloritization, moderate to heavy schistosity at 55-65°, minor crenulation folding, possibly sheared, moderate to heavy carbonatization. | | | | | | | | | | SPECIMEN AT 66.3' |
| | | 69.7-71.2: 10-15% carbonate (angerite + calcite) stringers. | 59833 | 69.7 | 71.7 | 2.0 | N11 | | | | | |
| 71.3 | 128.6 | INTERMEDIATE FLOW: Light to medium green, fine grained, hardness 3-1/2 to 4, slight carbonatization, slight chloritization, local acid lapilli tuff bands, trace quartz carbonate veinlets, carbonate veinlets at 25° and 65°, lighter bleached bands may represent minor silicification. | | | | | | | | | | SPECIMEN AT 86.2' |
| | | 98.0-99.0: 5" quartz carbonate vein at 30°. | 59834 | 98.0 | 99.0 | 1.0 | N11 | | | | | |
| 128.6 | 167.5 | MAFIC TUFF TO LAPILLI TUFF: Medium green with dark green-black irregular wisps around elongated clasts, fine grained, hardness 4-1/2 to 5, trace to 1% carbonate (ankerite) stringers, light to moderate carbonatization; minor breccia zones at | | | | | | | | | | |
| | | 154.6-156.9, 159.5, 161.7, 162.5: 1-6" wide dacitic | | | | | | | | | | |

7-2465
ASSESSMENT WORK

DOME EXPLORATION (CANADA) LIMITED
DIAMOND DRILL RECORD

HOLE No: 182-4

PAGE No: 2 of 4

| FOOTAGE from | to | DESCRIPTION | SAMPLE | | | | Au dwt/ton | Ag | Cu % | Zn % | | |
|-----------------|-------|--|--------|-------|-------|--------|---------------|----|---------|---------|--|--|
| | | | NP | from | to | Length | | | | | | |
| | | ruff bands are common. | | | | | | | | | | |
| | | 158.1-161.0: 3% quartz carbonate stringers, trace pyrite. | 59835 | 158.1 | 161.0 | 2.9 | N11 | | | | | |
| 167.5 | 168.8 | FELDSPAR PORPHYRY: Medium green grey, fine grained matrix with anhedral feldspar phenocrysts, moderate chloritization, 1-2% carbonate stringers, massive, slight carbonatization. | | | | | | | | | | |
| 168.8 | 204.2 | ANDESITIC TUFF: Medium to dark green, fine grained with very fine grained dark grey-black wisps, hardness 4, moderate to heavy chloritization, moderate to heavy carbonatization, light silicification, light to moderate schistosity at 60°. from 198.0-204.2' rock is more mafic. | | | | | | | | | | SPECIMEN AT 184.4' SPECIMEN AT 200.1' |
| 204.2 | 213.2 | INTERCALATED MAFIC TO INTERMEDIATE TUFF to LAPILLI TUFF: Light to medium green with light brown bands fine grained, hardness 3, moderate to heavy carbonatization (ankerite), 3% carbonate stringers, disseminated carbonate blebs, moderate sericitization, light to moderate chloritization, moderate to heavy schistosity, minor crenulated foliation, trace - 1% pyrrhotite and pyrite stringers and disseminated grains, upper 4" is oxidized and fragmented (shear?), intermediate bands are light green grey, more siliceous. | | | | | | | | | | SPECIMEN AT 208.6' |
| | | 209-212: 6" of ground core. | | | | | | | | | | |
| | | 204.2-209.2: Trace - 1% fine pyrrhotite stringers heavy to moderate chloritization, heavy schistosity | 31294 | 204.2 | 209.2 | 5.0 | N11 | | | | | |

ASSESSMENT WORK
1-2465

DOME EXPLORATION (CANADA) LIMITED
DIAMOND DRILL RECORD

HOLE No: 182-4
PAGE No: 3 of 4

| FOOTAGE from | to | DESCRIPTION | SAMPLE | | | | Au dwt/ton | Ag | Cu % | Zn % | Ni ppm | S % |
|-----------------|-------|--|--------|-------|-------|--------|---------------|----|---------|---------|-----------|--------|
| | | | No | from | to | Length | | | | | | |
| | | 209.2-214.2: 1-2% pyrrhotite stringers, intensely chloritized zones at 209.6, 210.2, 211.3; trace carbonate stringers, lower 1.2' heavily silicified. | 31295 | 209.2 | 214.2 | 5.0 | N11 | | | | | |
| 213.2 | 220.6 | SILICIFIED ZONE (altered mafic volcanic): light to medium green, fine grained, hard, banded, schistose, light to moderate chloritization, moderate to heavy carbonatization, rare quartz vein, local semi-massive pyrrhotite + pyrite bands, remainder of core has trace-2% sulphides parallel to foliation at 75°. | | | | | | | | | | |
| | | 214.2-215.2: Trace pyrite + pyrrhotite grains, silicified, carbonatized. | 31210 | 214.2 | 215.2 | 1.0 | 0.40 | | | 44 | 2.99 | |
| | | 215.2-216.2: 35% banded pyrite and pyrrhotite. | 31211 | 215.2 | 216.2 | 1.0 | 0.10 | | | 68 | | |
| | | 216.2-217.9: 1-3% pyrite + pyrrhotite stringers and grains, carbonatized, silicified. | 31212 | 216.2 | 217.9 | 1.7 | 0.10 | | | 46 | | |
| | | 217.9-218.9: Similar to 216-217' but 5% sulphides | 31213 | 217.9 | 218.9 | 1.0 | 0.10 | | | 56 | | |
| | | 218.9-220.6: 50% massive to semi-massive sulphides | 31214 | 218.9 | 220.6 | 1.7 | Tr | | | 100 | | |
| 220.6 | 304.0 | KOMATIITIC BASALT: Medium green, fine to medium grained, hardness 2-1/2 to 3-1/2, zones of medium grained massive flow texture, heavy chloritization, bands of intense irregular carbonate (ankerite) stringers and/or impregnation from 233.1 to 252.3' (20%) and from 274 to 304' (15-30%), relict (chloritized) spinifex texture from 275.2-285.3'. | | | | | | | | | | |
| | | 220.6-222.0: Minor sulphides. | 31215 | 220.6 | 222.0 | 1.4 | Tr | | | | | |

ASSESSMENT WORK
T-2465

DOME EXPLORATION (CANADA) LIMITED

| LOCATION: L284W 0+75S, Claim Post #4, claim P.595853 is 1095'N and 740'W of collar | | DIAMOND DRILL RECORD | | | | HOLE No 182-5 | | | | | |
|---|--|---|---------------------------|-----------------------|--------|--------------------|----|---------|---------|--|--|
| AZIMUTH: 180° | | PROPERTY: PROJECT 182 - Keith and Muskego Townships, Ontario | | | | CLAIM No: P.595853 | | | | | |
| DIP: -45° | LENGTH: 317' | ELEVATION: | | LOGGED BY: B. Needham | | | | | | | |
| STARTED: January 25, 1983 | CORE SIZE: AQ | SYSTEM OF MEASURE: IMPERIAL | | SECTION: | | | | | | | |
| COMPLETED: January 26, 1983 | DIP TESTS (CORRECTED): at 317' -32°45' | | DATE LOGGED: January 1983 | | | | | | | | |
| PURPOSE: TO TEST H.E.M. CONDUCTOR AT L284W 2+20S (10' wide) | | | | | | | | | | | |
| FOOTAGE from to | DESCRIPTION | SAMPLE | | | | Au dwt/ton | Ag | Cu % | Zn % | | |
| | | No. | from | to | Length | | | | | | |
| 0.0 | 10.0 | CASING IN OVERBURDEN | | | | | | | | | |
| 10.0 | 52.1 | DACITE TUFF: Light green to light grey, fine grained, hardness 4-1/2, moderate schistosity, light sericitization, lamination at 50° to core axis, moderate carbonation (ankerite), light to moderate chloritization, trace quartz carbonate veinlets, minor rhyolite tuff bands, oxidized pitted core at 11.8-12.4, 16.9-17.5, 46.2-47.0'. Broken core at 12.0 and 41.9'. | | | | | | | | | |
| 52.1 | 95.5 | METASEDIMENT: Siltstone, uniform medium grey, very fine to fine grained, hardness 4-5, slight sericitization, foliation and/or bedding at 40-50°, trace quartz carbonate stringers, light to moderate carbonatization, increase in shaley wisps towards base of unit, locally elongated fragments (?) (possibly tuffaceous), lower contact is indistinct. | | | | | | | | | |
| 95.5 | 146.1 | THOLEIITIC ANDESITE TUFF AND LAPILLI TUFF with slaty partings - medium to dark grey green, very fine grained with medium grained carbonate blebs, hardness 3 to 3-1/2, moderate carbonatization (ankerite) especially parallel to foliation, grey black partings (locally contorted) at 60°, fragments outlined by the above "shaley" partings, light to moderate schistosity; broken and/or pitted | | | | | | | | | |

ASSESSMENT WORK
T-2465

DOME EXPLORATION (CANADA) LIMITED
DIAMOND DRILL RECORD

HOLE No: 182-5
PAGE No: 2 of 5

| FOOTAGE from | to | DESCRIPTION | SAMPLE | | | Au dwt/ton | Ag | Cu % | Zn % | Ni ppm | S % |
|-----------------|-------|--|--------|-------|-------|---------------|------|---------|---------|-----------|--------------------------------------|
| | | | NO | from | to | | | | | | |
| | | core at 103.7-105.2, 123.6, 124.1, 143.4, 146; trace - 3% disseminated pyrrhotite ± pyrite. | | | | | | | | | |
| | | 141.1-146.1: 3-5% disseminated pyrrhotite ± pyrite | 59837 | 141.1 | 146.0 | 4.9 | N11 | | | | |
| 146.1 | 156.3 | SILICIFIED ZONE: with rhyolite tuff bands. - light grey green, fine grained, hardness > 5, variable silicification, foliation defined by sulphide rich carbonatized bands at approximately 65°, 1-5% pyrrhotite ± pyrite (local massive sulphide bands), moderate to heavy carbonatization, graphitic slaty horizon at 154.8'. | | | | | | | | | SPECIMEN AT 151.3' |
| | | 146.0-150.7: 5% ankerite stringers, 1-3% pyrrho- tite ± pyrite, chloritized. | 59838 | 146.0 | 150.7 | 4.7 | N11 | | | | |
| | | 150.7-152.0: Siliceous metasediment, 3% pyrrhotite ± pyrite. | 59839 | 150.7 | 152.0 | 1.3 | N11 | | | 41 | 4.66 |
| | | 152.0-153.2: 5% disseminated pyrrhotite. | 31223 | 152.0 | 153.2 | 1.2 | 0.20 | | | | |
| | | 153.2-156.3: 7% pyrrhotite ± pyrite. | 31224 | 153.2 | 156.3 | 3.1 | 0.20 | | | 33 | 16.8 |
| 156.3 | 175.9 | SULPHIDE IRON FORMATION: Light grey, fine grained, granular recrystallized chert with 5-30% massive to banded pyrite and minor pyrrhotite, sulphides sub- parallel to foliation, minor rhyolite tuff bands, conductive graphitic massive sulphide zone with quartz blebs from 168.7 to 173.3'. | | | | | | | | | |
| | | 156.3-158.9: 25% pyrite ± pyrrhotite concentrated in bands parallel to foliation. | | | | | | | | | SPECIMEN AT 161. SPECIMEN AT 169. |
| | | 158.9-161.9: Heavily silicified, 5% pyrrhotite ± pyrite stringers and blebs. | 31226 | 158.9 | 161.9 | 3.0 | 0.10 | | | 30 | |

ASSESSMENT WORK
1-27-65

DOME EXPLORATION (CANADA) LIMITED
DIAMOND DRILL RECORD

HOLE No: 182-5

PAGE No: 3 of 5

| FOOTAGE | | DESCRIPTION | SAMPLE | | | | Au dwt/ton | Ag | Cu % | Zn % | Ni ppm |
|---------|-------|---|--------|-------|-------|--------|---------------|--------------|---------|--------------------|-----------|
| from | to | | Nº | from | to | Length | | | | | |
| | | 161.9-165.9: Heavily silicified, 30% pyrite ± pyrrhotite stringers and blebs. | 31227 | 161.9 | 165.9 | 4.0 | 0.20 | | | 36 | |
| | | 165.9-167.8: Heavily silicified, 5% pyrite + pyrrhotite. | 31228 | 165.9 | 167.8 | 1.9 | 0.10 | | | 34 | |
| | | 167.8-170.9: Graphitic metasediment, 70-80% massive pyrite ± pyrrhotite. | 31229 | 167.8 | 170.9 | 3.1 | 0.10 | -CONDUCTIVE- | | | |
| | | 170.9-173.3: 90% massive pyrite and quartz. | 31230 | 170.9 | 173.3 | 2.4 | 0.10 | -CONDUCTIVE- | | 40 | |
| | | 173.3-175.0: Graphitic; 5% pyrite. | 31231 | 173.3 | 175.0 | 1.7 | 0.20 | -CONDUCTIVE- | | | |
| | | 175.0-176.0: Silicified, 2% pyrite cubes. | 31232 | 175.0 | 176.0 | 1.0 | 0.10 | | | | |
| 175.9 | 215.9 | FELDSPAR PORPHYRY: (felsic crystal tuff?) - light to medium green grey, fine grained matrix with medium to coarse grained feldspar phenocrysts, hardness 4-1/2 to 5, light to moderate sericitization, moderate schistosity, elongated phenocrysts at 60°, locally fragmented at 196.8, 198.4, 207.7 | | | | | | | | SPECIMEN AT 200.3' | |
| | | 176.0-178.3: Chloritized, siliceous, with 4" graphitic band at 177.5' | 59840 | 176.0 | 178.3 | 2.3 | N41 | | | | |
| 215.9 | 257.4 | QUARTZ FELDSPAR PORPHYRY: Light to medium green grey, fine to medium grained, hardness > 5, moderate schistosity at 60°, granular texture, moderate chloritization, rare carbonate stringer, trace pyrite blebs, chlorite stringers are common, 5' of core missing between 226-236' (no significant ground core). | | | | | | | | SPECIMEN AT 224.3' | |

7-2465
ASSESSMENT WORK

DOME EXPLORATION (CANADA) LIMITED
DIAMOND DRILL RECORD

HOLE NO: 182-5
PAGE NO: 4 of 5

| FOOTAGE | | DESCRIPTION | SAMPLE | | | | Au dwt/ton | Ag | Cu % | Zn % | | |
|---------|-------|--|--------|------|----|--------|---------------|----|---------|---------|--|--|
| from | to | | Nº | from | to | Length | | | | | | |
| 257.4 | 277.8 | DACITIC TO RHYOLITIC TUFF: light grey green, fine grained matrix with occasional rounded carbonate blebs, hardness > 5, slight schistosity at 70°, trace pyrite blebs, slight to moderate carbonatization (calcite + ankerite), lower 6" is slightly fragmented, rhyolite flow band from 267.5 to 268.3' | | | | | | | | | | SPECIMEN AT 264.2' |
| 277.8 | 282.0 | MAFIC VOLCANIC: Schistose, carbonatized, dark green, fine grained matrix with medium grained carbonate blebs, hardness 4, moderate to heavy schistosity, moderate chloritization, biotite rich, light to moderate carbonatization, foliation at 65°, carbonate and quartz carbonate bands throughout unit. | | | | | | | | | | SPECIMEN AT 279.0' |
| 282.0 | 317.0 | INTERCALATED MAFIC AND INTERMEDIATE FLOW AND TUFFS Medium to dark grey green, fine grained; hardness mafic 2-1/2 to 3, dacite 4; moderate carbonization (ankerite), light to moderate chloritization, foliation at 60 to 70°, dacitic bands are locally brecciated. | | | | | | | | | | SPECIMEN AT 297.5' SPECIMEN AT 315.2' |
| | | 282.0-289.1: Dacite tuff; light to medium green, fine grained, hardness 4 to 4-1/2, quartz carbonate blebs parallel to schistosity, upper 6" has trace pyrite cubes, light to moderate carbonatization, grossly laminated. | | | | | | | | | | |
| | | 289.1-293.2: Mafic flow; medium to dark green, fine grained, hardness 3, moderate chloritization, moderate carbonatization with numerous irregular carbonate blebs and stringers, light to moderate schistosity. | | | | | | | | | | |
| | | 293.2-295.9: Similar to 282-289' | | | | | | | | | | |

ASSESSMENT WORK
1-2465

DOME EXPLORATION (CANADA) LIMITED
DIAMOND DRILL RECORD

HOLE No: 182-5
 PAGE No: 5 of 5

| FOOTAGE | | DESCRIPTION | SAMPLE | | | | Au dwt/ton | Ag | Cu % | Zn % | | |
|---------|-------|---|--------|------|----|--------|---------------|----|---------|---------|--|--|
| from | to | | No | from | to | Length | | | | | | |
| | | 295.9-297.9: Similar to 289-293. | | | | | | | | | | |
| | | 297.9-300.0: Similar to 282-289. | | | | | | | | | | |
| | | 300.0-302.5: Similar to 289-293. | | | | | | | | | | |
| | | 302.5-317.0: Similar to 282-289 but more tuff- aceous, locally slightly brecciated. | | | | | | | | | | |
| | 317.0 | END OF HOLE | | | | | | | | | | |
| | | Probable cause of H.E.M. anomaly is the massive sulphide iron formation with graphitic bands from 161.9 to 176.0' | | | | | | | | | | |
| | | No significant radioactivity or fluorescence. | | | | | | | | | | |
| | | All casing pulled. | | | | | | | | | | |
| | | Core stored at Dome Mines Limited South Porcupine, Ontario | | | | | | | | | | |
| | | Drilling by Moderne Diamond Drilling Limited Val d'Or, Quebec | | | | | | | | | | |
| | | <i>B. McMillan</i> | | | | | | | | | | |
| | | | | | | | | | | | | |
| | | | | | | | | | | | | |
| | | | | | | | | | | | | |
| | | | | | | | | | | | | |
| | | | | | | | | | | | | |
| | | | | | | | | | | | | |
| | | | | | | | | | | | | |
| | | | | | | | | | | | | |
| | | | | | | | | | | | | |
| | | | | | | | | | | | | |
| | | | | | | | | | | | | |

T-2465
 ASSESSMENT WORK

DOME EXPLORATION (CANADA) LIMITED
DIAMOND DRILL RECORD

HOLE No: 182-2
PAGE No: 2 of 6

| FOOTAGE from | to | DESCRIPTION | SAMPLE | | | | Au dwt/ton | Ag | Cu % | Zn % | | |
|-----------------|-------|--|--------|-------|-------|--------|---------------|----|---------|---------|--|--|
| | | | No | from | to | Length | | | | | | |
| | | 94.4-99.0: Intense quartz carbonate impregnation from 95-97' and 98.4 to 99.0; heavy chloritization, trace pyrite (locally oxidized), local sericitization. | 59795 | 94.4 | 99.0 | 4.6 | Tr | | | | | |
| | | 103.3-105.8: Quartz carbonate impregnation, 5% chlorite blebs, trace hematite grains, trace sericite veinlets, trace pyrrhotite blebs. | 59796 | 103.3 | 105.8 | 2.5 | Tr | | | | | |
| | | 109.8-111.5: 80% quartz carbonate impregnation, Trace - 1% pyrrhotite. | 59797 | 109.8 | 111.5 | 1.7 | N11 | | | | | |
| 111.5 | 231.2 | CALC-ALKALINE ANDESITE: Massive with minor flow bands. Similar to 12-53', 3-5% carbonate stringers, minor flow bands usually have moderate chloritization and thicker carbonate stringers. | | | | | | | | | | |
| | | 133.1-134.1: 20% quartz carbonate stringers. | 59798 | 123.1 | 124.1 | 1.0 | N11 | | | | | |
| | | 139.3-143.1: 30% carbonate and quartz carbonate stringers ± blebs at 60 to 70°, stringers locally contorted. | 59799 | 139.3 | 143.1 | 3.8 | N11 | | | | | |
| | | 174.6-178.7: 10% irregular carbonate stringers. | 59800 | 174.6 | 178.7 | 4.1 | N11 | | | | | |
| | | 207.7-208.7: 60% quartz carbonate (calcite) impregnation. | 59805 | 207.7 | 208.7 | 1.0 | 0.40 | | | | | |
| | | 217.1-218.1: 50% quartz carbonate stringers and blebs, trace pyrite, tuffaceous host rock. | 59806 | 217.1 | 218.1 | 1.0 | Tr | | | | | SPECIMEN AT 157.8' SPECIMEN AT 189.8' |
| 231.2 | 265.9 | Fe THOLEIITIC MAFIC TUFF: Medium to dark green, very fine grained, hardness 3, 20% quartz carbonate and carbonate stringers, carbonatized (ankerite), trace-1% disseminated pyrrhotite, moderate chloritization, lamination at 40 to 50°, locally micro- | | | | | | | | | | |

ASSESSMENT WORK
T-02465

DOME EXPLORATION (CANADA) LIMITED

DIAMOND DRILL RECORD

HOLE No: 182-2
PAGE No: 3 of 6

| FOOTAGE from | to | DESCRIPTION | SAMPLE | | | | Au dwt/ton | Ag | Cu % | Zn % | Ni ppm |
|-----------------|-------|---|--------|-------|-------|--------|---------------|----|---------|--------------------|-----------|
| | | | No | from | to | Length | | | | | |
| | | folded and faulted. | | | | | | | | | |
| | | 231.2-235.9: 30% carbonate and quartz carbonate stringers and blebs, trace pyrrhotite. | 59807 | 231.2 | 235.9 | 4.7 | Tr | | | | |
| | | 241.8-246.4: 20% quartz carbonate (ankerite) stringers, trace pyrrhotite, lamination at 40°, microfractures (carbonate infilled) at 70 to 80°, trace chalcopyrite. | 59808 | 241.8 | 246.4 | 4.6 | Tr | | | | |
| | | | | | | | | | | SPECIMEN AT 247.3' | |
| | | 249.2-254.0: Similar to 241-246' (no chalcopyrite) | 59809 | 249.2 | 254.0 | 4.8 | Tr | | | | |
| | | 259.6-263.5: Contorted lamination; quartz carbonate bleb at 260.4, 2% carbonate stringers, 1% disseminated pyrrhotite. | 59810 | 259.6 | 263.5 | 3.9 | Tr | | | | |
| | | 263.5-265.5: 50% carbonate impregnation, 1% pyrrhotite blebs. | 59811 | 263.5 | 265.5 | 2.0 | Tr | | | 26 | |
| 265.9 | 274.0 | MAFIC VOLCANIC: Massive, similar to 12 to 53'. | | | | | | | | | |
| 274.0 | 310.1 | MAFIC TO INTERMEDIATE FLOW: Medium to dark grey green, fine grained, hardness 4-1/2 to 5, uniform texture, slight schistosity, rare quartz carbonate stringer, moderate carbonatization (ankerite). | | | | | | | | | |
| | | 305.7-310.1: 3-5% irregular quartz carbonate stringers and veinlets. | 59812 | 305.7 | 310.1 | 4.4 | Tr | | | | |
| 310.1 | 417.5 | CALC ALKALINE ANDESITE TO BASALT: with dacitic bands; dark green, fine grained, hardness 3 to 4-1/2; dacitic bands are lighter green and harder @ 5; trace carbonate stringers, rare quartz carbonate veinlets, moderate to locally heavy chloritization. | | | | | | | | | |

ASSESSMENT WORK
T-2465

DOME EXPLORATION (CANADA) LIMITED
DIAMOND DRILL RECORD

HOLE NO: 182-2
PAGE NO: 4 of 6

| FOOTAGE from | to | DESCRIPTION | SAMPLE | | | | Au dwt/ton | Ag | Cu % | Zn % | Ni ppm | S % | |
|-----------------|-------|---|----------------------------------|-------|-------|--------|---------------|----|---------|---------|-----------|--|--|
| | | | No | from | to | Length | | | | | | | |
| | | trace pyrrhotite blebs, light carbonatization, dacitic bands may represent silicification and bleaching, increase in the frequency of dacitic bands with depth, in the lower 17' there is also an increase in irregular carbonate stringers. | | | | | | | | | | SPECIMEN AT 344.8' 369.9' 411.6' | |
| | | 392.4-394.8: 30% quartz carbonate stringers and blebs, barren. | 31281 | 392.4 | 394.8 | 2.4 | 0.10 | | | | | | |
| | | 398.0-400.7: 5% quartz carbonate stringers, dacitic band from 400.0-400.6' | 31282 | 398.0 | 400.7 | 2.7 | 0.10 | | | | | | |
| | | 405.3-412.9: Trace quartz veins, trace pyrrhotite stringers. | 31283 | 405.3 | 412.9 | 7.6 | Tr | | | | | | |
| | | 407.9-412.9: Trace pyrrhotite stringers, trace-1% irregular carbonate stringers, dacitic. | 31284 | 407.9 | 412.9 | 5.0 | N11 | | | | | | |
| | | 412.9-417.5: 1% pyrrhotite blebs and stringers, 1-2% carbonate stringers, gross banding at 80-90° dacitic. | | | | | | | | | | | |
| 417.5 | 432.8 | CHERTY SLATE: With greywacke lenses, dark grey-black, very fine grained, hardness 4-5, lamination at 55°, locally contorted, 1% carbonate stringers, cherty lenses, 1-2% pyrite + pyrrhotite stringers, moderate carbonatization (calcite), graded bedding. | -LOCALLY MODERATELY CONDUCTIVE - | | | | | | | | | | |
| | | 417.5-422.2: 2% cherty lenses, 1% carbonate stringers, 2% fine pyrite and pyrrhotite veinlets. | 59813 | 417.5 | 422.2 | 4.7 | N11 | | | 86 | 1.58 | SPECIMEN AT 423.7' | |
| | | 422.2-426.3: 3% contorted quartz carbonate string-1-2% pyrrhotite + pyrite stringers, trace chalco-pyrite. | 59814 | 422.2 | 426.3 | 4.1 | N11 | | | | | | |

ASSESSMENT WORK
T-2465

DOME EXPLORATION (CANADA) LIMITED
DIAMOND DRILL RECORD

HOLE No: 182-2
PAGE No: 5 of 6

| FOOTAGE from to | DESCRIPTION | SAMPLE | | | | Au dwt/ton | Ag | Cu % | Zn % | S % |
|--------------------|---|--------|-------|-------|--------|---------------|----|---------|---------|--------------------|
| | | No | from | to | Length | | | | | |
| | 430.3-432.8: Contorted, 3% calcite blebs and stringers (faulted). 1% pyrite + pyrrhotite. | 59816 | 430.3 | 432.8 | 2.5 | N11 | | | | 1.80 |
| 432.8 | 452.0 | | | | | | | | | |
| | CALC ALKALINE ANDESITE-DACITE: Medium green, fine grained with medium to coarse grained blebs, hardness 3, 5-10% irregular carbonate (calcite) stringers. | | | | | | | | | SPECIMEN AT 434.9' |
| | 437.6-439.6: 15% calcite stringers, fractured quartz stringer. | 59817 | 437.6 | 439.6 | 2.0 | N11 | | | | |
| 452.0 | 463.0 | | | | | | | | | SPECIMEN AT 454.4' |
| | MAFIC VOLCANIC: Massive, similar to 12-53'. | | | | | | | | | |
| 463.0 | 478.5 | | | | | | | | | |
| | ARKOSE: Medium brown grey, fine to medium grained hardness 3 to 3-1/2, irregular carbonate (ankerite) stringers, biotite rich, grossly laminated, possible ripple cross bedding at 466.1-467.0', trace to 1% finely disseminated pyrite + pyrrhotite. | | | | | | | | | |
| | 463.0-466.1: 10-15% carbonate stringers, trace pyrite, pyrrhotite and chalcopyrite. | 59818 | 463.0 | 466.1 | 3.1 | N11 | | | | |
| | 466.1-471.1: 2% carbonate stringers, trace pyrite, pyrrhotite. | 31286 | 466.1 | 471.1 | 5.0 | N11 | | | | |
| | 471.1-476.1: Similar to 466-471'. | 31287 | 471.1 | 476.1 | 5.0 | N11 | | | | |
| | 476.1-478.5: Similar to 466-471'. | 31288 | 476.1 | 478.5 | 2.4 | N11 | | | | |
| 478.5 | 518.0 | | | | | | | | | |
| | Fe-Mg THOLEIITIC MAFIC LAPILLI TO ASH TUFF: Light to medium green clasts with dark green fine grained matrix, medium to coarse grained blebs, hardness 3-1/2 to 4, 2% carbonate stringers, trace pyrite + pyrrhotite, moderate chloritization, cherry slate wisps or bands, laminations at 65°. | | | | | | | | | |

7-2465
ASSESSMENT WORK

**DOME EXPLORATION (CANADA) LIMITED
DIAMOND DRILL RECORD**

HOLE NO: 182-2
PAGE NO: 6 of 6

| FOOTAGE from | to | DESCRIPTION | SAMPLE | | | | Au dwt/ton | Ag | Cu % | Zn % | | |
|-----------------|--------------|--|--------|-------|-------|--------|---------------|----|---------|---------|--|---------------------|
| | | | NO | from | to | Length | | | | | | |
| | 493.4-497.3: | Trace pyrrhotite. | 59819 | 493.4 | 497.3 | 3.9 | Nil | | | | | SPECIMENS AT 482.6' |
| | | | | | | | | | | | | 491.6' |
| | | | | | | | | | | | | 496.1' |
| | 498.2-518.0: | Mafic lapilli tuff. | | | | | | | | | | |
| 518.0 | | END OF HOLE | | | | | | | | | | |
| | | Significant change in geology with respect to Hole 182-1. (on west side of diabase dyke) Bedrock dominantly andesitic volcanics with minor meta-sediments from 417.5 - 432.8 and 463.0-478.5. No true iron formation encountered. Some evidence of faulting. | | | | | | | | | | |
| | | No significant radioactivity or fluorescence. | | | | | | | | | | |
| | | All casing pulled. | | | | | | | | | | |
| | | Core stored at Dome Mines Ltd. South Porcupine, Ontario | | | | | | | | | | |
| | | Drilling by Moderne Diamond Drilling Ltd. Val d'Or, Quebec. | | | | | | | | | | |
| | | <i>B. Needham</i> | | | | | | | | | | |

ASSESSMENT WORK
T-2465

DOME EXPLORATION (CANADA) LIMITED

LOCATION: L284W, 24+50N. From Post #3
claim P.595846 to collar 245'N & 640'E.
AZIMUTH: 180°

DIAMOND DRILL RECORD

HOLE NO
182-6

DIP: -45° LENGTH: 320' ELEVATION: PROPERTY: PROJECT 182 - Keith and
Muskego Townships, Ontario
CLAIM NO: P.595846 - 283'
P.595850 - 37'
STARTED: January 26, 1983 CORE SIZE: AQ SYSTEM OF MEASURE: IMPERIAL SECTION:
COMPLETED: January 27, 1983 DIP TESTS (CORRECTED): at 320' -31°00' LOGGED BY: B. Needham
PURPOSE: TO TEST H.E.M. CONDUCTOR AT L284W 22+90N (25' wide) DATE LOGGED: February 1983

| FOOTAGE from to | DESCRIPTION | SAMPLE | | | | Au dwt/ton | Ag | Cu % | Zn % | | |
|--------------------|--|--------|------|------|--------|---------------|----|---------|---------|--|--|
| | | No. | from | to | Length | | | | | | |
| 0.0 8.0 | CASING IN OVERBURDEN | | | | | | | | | | |
| 8.0 70.0 | FELDSPAR PORPHYRY: (feldspar porphyritic dacite) Light to medium grey to green grey, fine to medium grained with feldspar phenocrysts up to 3/8", pheno- crysts generally subrounded, hardness 5 to 5-1/2, variable phenocryst density, moderate chloritiza- tion with thin bands of intense chloritization (minor shear bands?), light to moderate schistosity feldspar core alteration; trace pyrite blebs, stringers and cubes; locally magnetic (disseminated magnetite stringers and grains), slight carbonat- ization, lower contact mixed with mafic volcanics over a 3' zone. | | | | | | | | | | |
| | 8.0-18.4: Feldspar porphyry; coarse grained, | 59841 | 8.0 | 12.3 | 4.3 | N11 | | | | | |
| | strongly magnetic; quartz stringers + magnetite at 8.4, 8.5, 9.5, 10.4, 10.6, 10.9; specular hematite at 9.9; trace pyrite blebs up to 1/2" diameter. trace chalcopyrite; intensely chloritized at 12.3, 13.3; oxidized at 14.9 to 15.1, light carbonatiz- ation. | 59842 | 12.3 | 13.5 | 1.2 | N11 | | | | | |
| | 18.4-37.8: Feldspar porphyritic dacite; light grey densely packed medium grained feldspar phenocrysts, subrounded to rounded phenocrysts, light to moder- ate chloritization, pyrite cubes at lower contact. | | | | | | | | | | |

ASSESSMENT WORK
T-2465

DOME EXPLORATION (CANADA) LIMITED
DIAMOND DRILL RECORD

HOLE No: 182-6
PAGE No: 2 of 7

| FOOTAGE | | DESCRIPTION | SAMPLE | | | | Au dwt/ton | Ag | Cu % | Zn % | | |
|---------|-------|---|--------|------|------|--------|---------------|----|---------|---------|--|-------------------|
| from | to | | No | from | to | Length | | | | | | |
| | | Thin section at 24.5' (See Appendix 6 for rock description.) | | | | | | | | | | |
| | | 37.8-50.5; Feldspar porphyry, coarse grained, variable alteration of phenocrysts to chlorite and biotite, chlorite stringers and blebs. | | | | | | | | | | |
| | | 50.5-61.1: Similar to 18-37' but slightly coarser grained and more distinct phenocrysts. | | | | | | | | | | |
| | | 61.1-70.0: Similar to 37-50', lower 3' intercalated with mafic volcanics, irregular contorted contacts. Thin section at 63.7' classified rock as a feldspar porphyritic dacite (See Appendix 6 for rock description) | | | | | | | | | | |
| | | 66.5-71.0: Moderate to heavy chloritization, 1% pyrite blebs. | 59843 | 66.5 | 71.0 | 4.5 | N11 | | | | | |
| 70.0 | 99.2 | THOLEIITIC Fe - Mg BASALT: Chloritized, magnetic Dark green, fine grained, hardness 4-1/2 to 5, moderate to heavy silicification, heavy chloritization with contorted chlorite stringers (shearing?), moderate carbonatization, 1-2% irregular ankerite stringers, trace epidote alteration, trace to 1% pyrite blebs, locally strongly magnetic, light creamy green mineral/alteration disseminated through matrix in the upper 1/2 of unit. | | | | | | | | | | SPECIMEN AT 88.5' |
| 99.2 | 146.9 | BASALT: Massive to flow banded, medium to dark green, fine grained, hardness 4 to 4-1/2, moderate to heavy chloritization, slight carbonatization, trace-1% carbonate stringers, trace pyrite, uniform texture. | | | | | | | | | | |

ASSESSMENT WORK
T-9465

DOMES EXPLORATION (CANADA) LIMITED
DIAMOND DRILL RECORD

HOLE No: 182-6
PAGE No: 3 of 7

| FOOTAGE | | DESCRIPTION | SAMPLE | | | | Au dwt/ton | Ag | Cu % | Zn % | | |
|---------|-------|--|--------|------|----|--------|---------------|----|---------|---------|--|--|
| from | to | | No | from | to | Length | | | | | | |
| | | 99.2-136.5: Massive basalt; creamy white feldspar laths, heavily chloritized matrix. | | | | | | | | | | |
| | | 125.5-126.1: Feldspar porphyry dyke, similar to 18-37'. | | | | | | | | | | |
| | | 133.0-134.2: Chlorite veinlets at 30° (shearing?). | | | | | | | | | | |
| | | 136.5-137.5: 4" calcite vein with chlorite blebs. | | | | | | | | | | |
| | | 136.5-146.9: Basalt flow. | | | | | | | | | | |
| 146.9 | 149.7 | FELDSPAR PORPHYRY DYKE: Similar to 37-50', moderately chloritized, trace pyrite cubes, medium to coarse grained. | | | | | | | | | | |
| 149.7 | 169.9 | BASALT: Similar to 99-146. | | | | | | | | | | |
| | | 168.9-169.9: 2-3" irregular quartz carbonate chlorite stringers, adjacent basalt is heavily chloritized. | | | | | | | | | | |
| 169.9 | 173.0 | FELDSPAR PORPHYRY: Coarse grained - similar to 18-37, phenocrysts have indistinct margins. | | | | | | | | | | |
| 173.0 | 197.0 | BASALT: Similar to 99-146', 3% irregular carbonate stringers and blebs from 183.5-185.0, from 173.0 to 174.7 there is a quartz vein with chlorite blebs, lower basalt is heavily chloritized at the contact. | | | | | | | | | | |
| 197.0 | 215.2 | FELDSPAR PORPHYRY: Very coarse grained - similar to 37-50', phenocrysts have distinct margins, no significant alteration of adjacent mafic volcanics, sharp contacts. | | | | | | | | | | |

ASSESSMENT WORK
1-2465

DOME EXPLORATION (CANADA) LIMITED
DIAMOND DRILL RECORD

HOLE No: 182-6

PAGE No: 4 of 7

| FOOTAGE from | to | DESCRIPTION | SAMPLE | | | | Au dwt/ton | Ag | Cu ppm | Zn % | Ni ppm | S % |
|-----------------|-------|--|--------|-------|-------|--------|---------------|----|-----------|---------|----------------------|--------|
| | | | N9 | from | to | Length | | | | | | |
| 215.2 | 227.5 | MAFIC TO INTERMEDIATE FLOW: Medium green, fine grained, hardness 3-1/2 to 4, light to moderate chloritization, light to moderate carbonatization, trace carbonate stringers, trace pyrite, uniform texture, rare pyrrhotite bleb. | | | | | | | | | | |
| 227.5 | 239.1 | FELDSPAR PORPHYRY: Coarse grained, similar to 37-50'. | | | | | | | | | SPECIMEN AT 231.8' | |
| 239.1 | 253.9 | MAFIC-INTERMEDIATE FLOW: Light to medium green, very fine grained, hardness 3-1/2, moderate carbonatization, 2-5% wispy carbonate stringers, gross foliation at 60°, trace disseminated pyrrhotite. | | | | | | | | | | |
| | | 248.9-253.9: As above. | 59846 | 248.9 | 253.9 | 5.0 | N11 | | | | | |
| 253.9 | 260.4 | QUARTZ FELDSPAR PORPHYRY: (Rhyolite tuff?) Light to medium green grey, fine to medium grained, hardness > 5, gradually becomes finer grained towards base of unit, sharp lower contact. | | | | | | | | | SPECIMEN AT 257.8' | |
| 260.4 | 285.3 | INTERCALATED METASEDIMENTS (slate, greywacke) AND MAFIC TUFFS: Banded, locally contorted bedding at 45-80°, moderate carbonatization, 3-5% irregular quartz ankerite stringers, 1-5% pyrrhotite ± pyrite (usually parallel to bedding and/or foliation). | | | | | | | | | -LOCALLY CONDUCTIVE- | |
| | | 260.4-264.0: Black graphitic slate with quartz blebs; 3-5% quartz carbonate stringers, locally brecciated, trace chalcopyrite, moderately magnetic (especially in siliceous zones: conductive). | 59847 | 260.4 | 264.0 | 3.6 | N11 | 53 | | 130 | 3.2 | |
| | | 264.0-267.5: Graphitic slate and siliceous meta-sediments; banding at 45-75°, trace - 2% carbonate stringers, locally brecciated, 1-3% pyrrhotite + | 59848 | 264.0 | 267.5 | 3.5 | N11 | | | | CONDUCTIVE | |

ASSESSMENT WORK

T-2465

DOME EXPLORATION (CANADA) LIMITED
DIAMOND DRILL RECORD

HOLE No: 182-6

PAGE No: 5 of 7

| FOOTAGE from | to | DESCRIPTION | SAMPLE | | | | Au dwt/ton | Ag | Cu ppm | Zn % | Ni ppm | S % |
|-----------------|----|--|--------|-------|-------|--------|---------------|-----|-----------|---------|-----------|--------|
| | | | No | from | to | Length | | | | | | |
| | | pyrite, minor tuffaceous bands. | | | | | | | | | | |
| | | 267.5-270.4: Mafic tuff and slate; 10-15% irregular carbonate stringers, trace-1% disseminated pyrite and pyrrhotite, trace chalcopryrite; upper 0.7' has a feldspar porphyry dyke with a quartz carbonate vein at 0-10°. | 59849 | 267.5 | 270.4 | 2.9 | N11 | 250 | | 71 | 1.33 | |
| | | 270.4-272.3: Greywacke and graphitic slate; locally brecciated, magnetic, irregular carbonate blebs and stringers, trace-2% disseminated pyrite and pyrrhotite, trace-1% specular hematite. | 59850 | 270.4 | 272.3 | 1.9 | N11 | | | | | |
| | | 272.3-273.8: Greywacke; heavy carbonatization, slaty wisps, trace pyrrhotite, bedding at 45°. | 59851 | 272.3 | 273.8 | 1.5 | N11 | | | | | |
| | | 273.8-274.8: Slate; 50% pyrrhotite + pyrite, 5% carbonate blebs. | 59801 | 273.8 | 274.8 | 1.0 | 0.10 | | | 210 | | |
| | | 274.8-278.0: Dacite tuff upper 1.1', light to medium green, fine grained, light carbonatization, foliation at 45°, barren; slate and greywacke in the lower 2.1', heavy carbonatization, 1-2% pyrrhotite + pyrite, minor graphite. | 59802 | 274.8 | 278.0 | 3.2 | Tr | | | | | |
| | | 278.0-281.7: Graphitic metasediment; local heavy carbonatization, locally contorted bedding, 25% pyrite and pyrrhotite banded at 45°, trace chalcopryrite, trace sphalerite stringers. | 59803 | 278.0 | 281.7 | 3.7 | 0.10 | | | | 140 | |
| | | 281.7-285.3: Greywacke with minor cherty slate; heavy carbonatization, 5% pyrite and pyrrhotite. | 59804 | 281.7 | 285.3 | 3.6 | 0.10 | | | | | |

ASSESSMENT WORK
T-2465

DOME EXPLORATION (CANADA) LIMITED
DIAMOND DRILL RECORD

HOLE NO: 182-6

PAGE NO: 6 of 7

| FOOTAGE | | DESCRIPTION | SAMPLE | | | | Au dwt/ton | Ag | Cu % | Zn % | | |
|---------|-------|--|--------|-------|-------|--------|---------------|----|---------|---------|--|--------------------|
| from | to | | NO | from | to | Length | | | | | | |
| 285.3 | 298.5 | INTERMEDIATE TUFF AND LAPILLI TUFF: Light to medium green, fine grained, hardness 4, light to moderate chloritization, light to moderate schistosity at 60°, trace pyrite and pyrrhotite. | | | | | | | | | | |
| | | | | | | | | | | | | SPECIMEN AT 288.3' |
| | | 290.0-291.2: Quartz carbonate stringers with chlorite blebs, trace pyrite + pyrrhotite. | 31296 | 289.8 | 291.2 | 1.4 | Nil | | | | | |
| 298.5 | 302.2 | RHYOLITE FLOW: Light to medium grey, fine grained, hardness > 5, slight chloritization, trace carbonate stringers, trace-1% quartz stringers and blebs, pyrrhotite and pyrite in quartz veins at 298.7, 299.4, 300.3; chlorite blebs and grains disseminated through matrix. | | | | | | | | | | |
| | | | | | | | | | | | | SPECIMEN AT 301.7' |
| | | 298.5-300.5: 1% quartz veins, trace pyrite and pyrrhotite. | 59852 | 298.5 | 300.5 | 2.0 | Nil | | | | | |
| 302.2 | 312.3 | INTERMEDIATE TUFF AND LAPILLI TUFF: Similar to 285-298; moderate carbonatization, foliation at 75°, minor quartz carbonate stringers. | | | | | | | | | | |
| 312.3 | 317.7 | FELDSPAR PORPHYRY: Similar to 37-50', chloritized. | | | | | | | | | | |
| 317.7 | 320.0 | RHYOLITE TUFF: Light grey green, fine grained, hardness 4, disseminated biotite flakes, moderate carbonatization, trace disseminated pyrrhotite and pyrite, foliation at 70°. | | | | | | | | | | |
| | | | | | | | | | | | | SPECIMEN AT 319.0 |
| | 320.0 | END OF HOLE | | | | | | | | | | |
| | | Probable cause of H.E.M. conductor is the locally conductive graphitic and sulphide bearing meta-sediment unit from 260.4 to 285.3' | | | | | | | | | | |

ASSESSMENT WORK
T-2465

DOME EXPLORATION (CANADA) LIMITED

| | | | | |
|---|---|-----------------------------|----------------------------|--|
| LOCATION: L304W 31+15N, From Post #3 | DIAMOND DRILL RECORD | | | HOLE NO |
| Claim P.595845 to collar 855'N & 315'E | | | | 182-7 |
| AZIMUTH: 180° | | | | PROPERTY: PROJECT 182 - Keith and Muskego Townships, Ontario |
| DIP: -45° | LENGTH: 304' | ELEVATION: | | CLAIM NO: P.595845 |
| STARTED: January 28, 1983 | CORE SIZE: AQ | SYSTEM OF MEASURE: IMPERIAL | SECTION: | |
| COMPLETED: January 29, 1983 | DIP TESTS (CORRECTED): at 304' -36° 45' | | LOGGED BY: B. Needham | |
| PURPOSE: TO TEST H.E.M. CONDUCTOR AT L304W 29+50N | | | DATE LOGGED: February 1983 | |

| FOOTAGE | | DESCRIPTION | SAMPLE | | | | Au dwt/ton | Ag | Cu % | Zn % | | |
|---------|------|---|--------|------|----|--------|---------------|----|---------|---------|--|-------------------|
| from | to | | No. | from | to | Length | | | | | | |
| 0.0 | 54.0 | CASING IN OVERBURDEN | | | | | | | | | | |
| 54.0 | 54.5 | FELSIC VOLCANIC: Light to medium grey, fine grained, hardness 4-1/2, light carbonatization, light chloritization, grossly foliated. | | | | | | | | | | |
| 54.5 | 79.1 | FELDSPAR PORPHYRY DACITE: with rhyolite lapilli tuff bands. Light to medium green grey, medium to coarse grained feldspar phenocrysts, hardness > 5, minor disseminated biotite, slight to moderate chloritization, trace disseminated pyrite, light schistosity, chlorite infilled irregular fractures, trace carbonate stringers. | | | | | | | | | | |
| | | 61.8-65.5: Rhyolite lapilli tuff, light grey fine grained, hardness 4-1/2, moderate schistosity at 60° to core axis, light sericitization and chloritization, subangular to subrounded fragments. | | | | | | | | | | SPECIMEN AT 61.9' |
| | | 72.0-79.1: Feldspar phenocrysts significantly less abundant, oxidized zone at 79.0' (feldspar preferentially leached). | | | | | | | | | | SPECIMEN AT 78.0' |
| 79.1 | 83.5 | SHALE AND GREYWACKE: Dark grey to black, very fine grained, hardness 4 to 4-1/2, moderate carbonatization, light silicification, fine lamination at 70 to 80° locally offset by microfaulting at 0-10° | | | | | | | | | | |

ASSESSMENT WORK

7-2465

DOME EXPLORATION (CANADA) LIMITED
DIAMOND DRILL RECORD

HOLE No: 182-7
PAGE No: 2 of 5

| FOOTAGE | | DESCRIPTION | SAMPLE | | | | Au dwt/ton | Ag | Cu % | Zn % | S % |
|---------|-------|--|--------|-------|-------|--------|---------------|--------------|---------|---------|--------|
| from | to | | No | from | to | Length | | | | | |
| | | irregular carbonate stringers crosscut bedding, lenses of felsic tuff within unit. | | | | | | | | | |
| 83.5 | 90.0 | QUARTZ FELDSPAR PORPHYRY: Light to green grey, medium to coarse grained, phenocrysts, hardness > 5, disseminated biotite, trace disseminated pyrite, phenocrysts locally densely packed, light chloritization, rare quartz carbonate stringer. | | | | | | | | | |
| 90.0 | 92.8 | SHALE AND GREYWACKE: Similar to 79.1-83.5. | | | | | | | | | |
| 92.8 | 97.9 | DACITE: Light to medium grey, fine grained, hardness 4-1/2 to 5, uniform texture, light to moderate schistosity, irregular quartz carbonate stringers, light to moderate chloritization. | | | | | | | | | |
| 97.9 | 137.0 | GRAPHITIC SHALE AND GREYWACKE: Similar to 79.1-83.5 but shale is graphitic and the sediments are more cherty and/or silicified from 126.3 to 137.0. | | | | | | | | | |
| | | 97.9-102.9: 1% carbonate stringers. | 59853 | 97.9 | 102.9 | 5.0 | N11 | | | | |
| | | 120.0-125.0: Greywacke, locally brecciated and heavily carbonatized, trace carbonate stringers, trace pyrite and pyrrhotite. | 59854 | 120.0 | 125.0 | 5.0 | N11 | | | | |
| | | 125.0-129.2: 1% carbonate stringers, trace - 1% pyrite and pyrrhotite blebs and stringers, trace bornite. | 59855 | 125.0 | 129.2 | 4.2 | N11 | -CONDUCTIVE- | | | |
| | | 129.2-132.0: Trace-1% disseminated pyrite and stringers, light carbonatization. | 59856 | 129.2 | 132.0 | 2.8 | N11 | | | 0.88 | |
| | | 132.0-133.0: Trace disseminated pyrite. | 31248 | 132.0 | 133.0 | 1.0 | 0.80 | | | 6.84 | |

ASSESSMENT WORK
T-2465

DOME EXPLORATION (CANADA) LIMITED
DIAMOND DRILL RECORD

HOLE No: 182-7
PAGE No: 3 of 5

| FOOTAGE from | to | DESCRIPTION | SAMPLE | | | | Au dwt/ton | Ag | Cu % | Zn % | S % |
|-----------------|-------|---|--------|-------|-------|--------|---------------|--------------|---------|-------------------|--------|
| | | | No | from | to | Length | | | | | |
| | | 133.0-137.0: Semi massive to massive pyrite with trace quartz blebs and stringers; graphitic. | 31249 | 133.0 | 137.0 | 4.0 | 0.10 | -CONDUCTIVE- | | 22.80 | |
| 137.0 | 194.1 | INTERMEDIATE AND ACID LAPILLI TUFF: Light to medium grey green with creamy white clasts and veinlets fine to very fine grained, hardness > 5, light to moderate carbonatization, 1-2% carbonate blebs and stringers, trace disseminated pyrite, gross foliation at 70-80°, slight chloritization. | | | | | | | | | |
| | | 137.0-138.0: Trace pyrrhotite and pyrite. | 31250 | 137.0 | 138.0 | 1.0 | 0.20 | | | | |
| | | 138.0-143.0: 1% finely disseminated pyrrhotite, 3% carbonate stringers and bands. | 31297 | 138.0 | 143.0 | 5.0 | N11 | | | | |
| | | 143.0-148.0: Trace pyrrhotite, 1% carbonate veinlets. | | | | | | | | | |
| 194.1 | 304.0 | FELDSPAR PORPHYRY DACITE: and minor rhyolite tuff bands. Medium grey to green grey, medium to coarse grained feldspar phenocrysts, hardness > 5, light to moderate chloritization with trace to 1% chlorite blebs; trace disseminated pyrite ± pyrrhotite blebs carbonate stringers at 30°, occasional band of non porphyritic dacite flow. | | | | | | | | | |
| | | 194.1-203.2: Coarse grained, poorly defined feldspar phenocrysts. | | | | | | | | | |
| | | 203.2-205.2: Very diffuse feldspar phenocrysts, rare K feldspar phenocryst. | | | | | | | | | |
| | | 205.2-210.8: Poorly defined feldspar phenocrysts, moderate to heavy chloritization. | | | | | | | | | |
| | | | | | | | | | | SPECIMEN AT 207.4 | |

ASSESSMENT WORK

T-2465

DOME EXPLORATION (CANADA) LIMITED
DIAMOND DRILL RECORD

HOLE No: 182-7
PAGE No: 4 of 5

| FOOTAGE | | DESCRIPTION | SAMPLE | | | | Au dwt/ton | Ag | Cu % | Zn % | | |
|---------|-------|---|--------|-------|-------|--------|---------------|----|---------|---------|--|--------------------|
| from | to | | No | from | to | Length | | | | | | |
| | | 210.8-218.3: Heavily chloritized matrix † minor biotite, light to moderate schistosity, locally foliated (possibly sheared), 1-3% carbonate stringers, trace pyrite, local microfracturing. | 59857 | 214.5 | 219.5 | 5.0 | N11 | | | | | |
| | | 218.3-230.7: Sheared; chlorite veinlets are common at approximately 20-30°, very diffuse feldspar phenocrysts. | 59858 | 225.8 | 230.8 | 5.0 | N11 | | | | | SPECIMEN AT 221.5' |
| | | 230.7-275.7: Medium to coarse grained phenocrysts low to moderate phenocryst density, partial feldspar alteration, trace - 1% carbonate veinlets. | | | | | | | | | | SPECIMEN AT 261.8' |
| | | 275.7-279.3: Rhyolite lapilli tuff, light to medium grey, fine grained with fine to medium grained chlorite and biotite grains, hardness > 5, trace to 1% disseminated pyrite, very minor carbonate stringers, uniform texture. | | | | | | | | | | SPECIMEN AT 276.6' |
| | | 274.3-279.3: 1% pyrite, chlorite veinlets. | 59859 | 274.3 | 279.3 | 5.0 | N11 | | | | | |
| | | 279.3-294.2: Similar to 218-230. | | | | | | | | | | SPECIMEN AT 281.8' |
| | | 294.2-294.5: Shear?: broken-fragmented core. | | | | | | | | | | |
| | | 294.5-304.0: Similar to 210-218'; more intense feldspar phenocryst alteration. | | | | | | | | | | |
| | 304.0 | END OF HOLE | | | | | | | | | | |
| | | Probable cause of H.E.M. anomaly is the locally graphitic shale and greywacke unit and/or the massive sulphide from 153.0 to 137.0. | | | | | | | | | | |
| | | All casing pulled from hole. Hole not cemented. | | | | | | | | | | |

ASSESSMENT WORK

T-27465

DOMES EXPLORATION (CANADA) LIMITED

| LOCATION: L244W, 25+80N. From post #2 | | | | DIAMOND DRILL RECORD | | | | HOLE No 182-10 | | | | |
|---|-------|--|--------|--|------|-----------------------------|---------------|--|---------|---------|--|--|
| Claim P.595595 to collar 240'N and 325'E | | | | | | | | PROPERTY: PROJECT 182 - Keith and Muskego Townships, Ontario | | | | |
| AZIMUTH: 180° | | | | | | | | CLAIM No: P.595595 ≈ 283' | | | | |
| DIP: -45° | | | | LENGTH: 478' | | ELEVATION: | | P.595594 ≈ 195' | | | | |
| STARTED: January 30, 1983 | | | | CORE SIZE: AQ | | SYSTEM OF MEASURE: IMPERIAL | | SECTION: | | | | |
| COMPLETED: February 1, 1983 | | | | DIP TESTS (CORRECTED): at 478' -29°45' | | | | LOGGED BY: B. Needham | | | | |
| PURPOSE: GEOLOGICAL CROSS SECTION AND TO TEST MASSIVE PYRITE ZONE ON THE NORTH SHORE OF THE PENINSULA | | | | | | | | DATE LOGGED: February 1983 | | | | |
| FOOTAGE from | to | DESCRIPTION | SAMPLE | | | | Au dwt/ton | Ag | Cu % | Zn % | | |
| | | | No. | from | to | Length | | | | | | |
| 0.0 | 54.0 | CASING IN OVERBURDEN | | | | | | | | | | |
| 54.0 | 96.9 | FELDSPAR PORPHYRITIC AND CRYSTAL TUFF DACITE: Medium green grey, fine grained matrix with medium to coarse grained (maximum diameter 1/4") phenocrysts, hardness > 5, light to moderate chloritization, slight carbonatization; zones of K-metasomatism (?) at 54.6-57.3, 60.0-61.6, 65.6-66.9, 75.8-76.6; trace pyrite grains, upper 5' is light to moderately fractured at 0-30° to the core axis, core is broken locally. | | | | | | | | | | |
| | | 54.0-59.0: Zones of K-metasomatism, 3-5% chlorite veinlets and blebs, possible shearing. | 59890 | 54.0 | 59.0 | 5.0 | 0.10 | | | | | |
| | | 59.0-62.6: Fine grained felsic volcanic. | | | | | | | | | | |
| | | 68.5-73.5: Trace pyrite, altered phenocrysts. | 59891 | 68.5 | 73.5 | 5.0 | Tr | | | | | |
| | | 73.5-96.9: Equigranular, porphyritic felsic, crystal tuff (?), light to moderate chloritization. | | | | | | | | | | |
| | | 78.5-83.5: Trace disseminated pyrite. | 59892 | 78.5 | 83.5 | 5.0 | Tr | | | | | |
| 96.9 | 129.1 | MAFIC TO INTERMEDIATE FLOW ± rhyolite bands. Medium green, fine grained, hardness 4, massive texture, rare amygdale; 2% light green, hard. | | | | | | | | | | |

ASSESSMENT WORK

T-2465

DOME EXPLORATION (CANADA) LIMITED
DIAMOND DRILL RECORD

HOLE NO: 182-10

PAGE NO: 2 of 9

| FOOTAGE from | to | DESCRIPTION | SAMPLE | | | | Au dwt/ton | Ag | Cu % | Zn % | | |
|-----------------|-------|---|--------|-------|-------|--------|---------------|----|---------|---------|--|--------------------|
| | | | NO | from | to | Length | | | | | | |
| | | rhyolite bands with trace pyrite. | | | | | | | | | | |
| | | 96.9-99.5: Trace pyrite in rhyolite bands. | 59893 | 96.9 | 99.5 | 2.6 | Tr | | | | | |
| | | 128.3-129.3: Trace-1% pyrite, 2" pyrite and pyrrhotite bleb adjacent to quartz carbonate vein. | 31251 | 128.3 | 129.3 | 1.0 | Tr | | | | | SPECIMEN AT 105.5' |
| 129.1 | 168.7 | SILICIFIED BASALT with RHYOLITE BANDS: Light to medium green, fine grained, hardness 4 to 5, locally contorted and fragmented, chlorite blebs and stringers are common, gross foliation at 60°, gradually becomes more rhyolitic and/or silicified with depth, trace-1% pyrite with a semi-massive sulphide zone from 155.8-165.9'. | | | | | | | | | | |
| | | 133.3-134.3: 1/4 to 1" quartz carbonate vein, 1% pyrite and pyrrhotite; whole rock analyses at 134.2 plots as a calc alkaline dacite. | 31252 | 133.3 | 134.3 | 1.0 | Tr | | | | | |
| | | 145.8-155.8: Trace disseminated pyrite, minor quartz stringers, heavily chloritized from 147.4 to 148.3'. | 59894 | 145.8 | 150.8 | 5.0 | Tr | | | | | |
| | | | 59895 | 150.8 | 155.8 | 5.0 | Tr | | | | | |
| | | 155.8-158.2: 5-10% pyrite and pyrrhotite stringers and bands at 65°. | 31253 | 155.8 | 158.2 | 2.4 | Tr | | | | | |
| | | 158.2-161.1: Heavily silicified, foliation at 55-70°; 10-15% pyrite ± pyrrhotite blebs. | 31254 | 158.2 | 161.1 | 2.9 | Tr | | | | | |
| | | 161.1-165.9: Heavily silicified; banded semi-massive to massive pyrite ± pyrrhotite at 50°. | 31255 | 161.1 | 163.0 | 1.9 | Tr | | | | | |
| | | | 31256 | 163.0 | 165.9 | 2.9 | Tr | | | | | |
| | | 165.9-168.7: Similar to 145-155'; silicified. | 31257 | 165.9 | 168.7 | 2.8 | Tr | | | | | SPECIMEN AT 156.0' |

ASSESSMENT WORK

T-2465

DOME EXPLORATION (CANADA) LIMITED
DIAMOND DRILL RECORD

HOLE NO: 182-10
PAGE NO: 3 of 9

| FOOTAGE from | to | DESCRIPTION | SAMPLE | | | | Au dwt/ton | Ag | Cu % | Zn % | | |
|-----------------|-------|---|--------|-------|-------|--------|---------------|----|---------|---------|--|--------------------|
| | | | NO | from | to | Length | | | | | | |
| 168.7 | 190.5 | FELDSPAR PORPHYRITIC DACITE: Medium grey, fine grained matrix with medium to coarse grained phenocrysts, hardness > 5, chlorite blebs and veinlets are common, trace-1% disseminated pyrite, light carbonatization, trace-1% quartz carbonate stringers, whole rock analyses at 174.2' plots as a calc-alkaline dacite. | | | | | | | | | | |
| | | 168.7-178.7: As above; rhyolite band at 169.5'. | 59896 | 168.7 | 173.7 | 5.0 | Tr | | | | | |
| | | | 59897 | 173.7 | 178.0 | 5.0 | Tr | | | | | |
| | | 178.5-190.5: Dacitic to felsic volcanic; dark grey, fine grained with rare feldspar phenocryst, hardness > 5, rare chlorite blebs, trace-1% pyrite. | | | | | | | | | | SPECIMEN AT 185.3' |
| | | 178.7-181.7: 1/4-1/2" quartz carbonate vein at 0-10°, trace-1% pyrite, locally silicified. | 59898 | 178.7 | 181.7 | 3.0 | 0.20 | | | | | |
| | | 185.5-190.5: 3% quartz carbonate stringers at approximately 15 and 80°, trace disseminated pyrite. | 59899 | 185.5 | 190.5 | 5.0 | Tr | | | | | |
| 190.5 | 203.3 | DACITIC TO FELSIC CRYSTAL TUFF: Medium to dark grey, densely packed medium grained quartz feldspar phenocrysts with the rare, coarse grained phenocryst, hard, rare rhyolite clast, biotite and chlorite in the matrix, 1% carbonate stringers, trace pyrite, quartz veins at 194.9, 195.0, 195.3'. | | | | | | | | | | |
| | | 194.1-195.9: as above. | 59900 | 194.1 | 195.9 | 1.8 | Tr | | | | | SPECIMEN AT 197.7' |
| 203.3 | 210.7 | ALTERED FELDSPAR PORPHYRY: Similar to 168-190' but feldspar phenocrysts are anhedral generally, some euhedral phenocrysts are heavily chloritized and biotiferous. | | | | | | | | | | |

ASSESSMENT WORK
T-3465

DOME EXPLORATION (CANADA) LIMITED
DIAMOND DRILL RECORD

HOLE NO: 182-10
PAGE NO: 4 of 9

| FOOTAGE from | to | DESCRIPTION | SAMPLE | | | | Au dwt/ton | Ag | Cu % | Zn % | | |
|-----------------|-------|---|--------|-------|-------|--------|---------------|----|---------|---------|--|--------------------|
| | | | NO | from | to | Length | | | | | | |
| | | 203.3-206.2: 1% disseminated pyrite. | 59901 | 203.3 | 206.2 | 2.9 | Tr | | | | | SPECIMEN AT 208.7' |
| 210.7 | 213.1 | BASALT: Massive, chloritized. Dark green, fine grained feldspar laths, hardness 4 to 4-1/2, heavily chloritized, light to moderate carbonatization, trace pyrite cubes, alteration bands at contacts. | | | | | | | | | | |
| | | 210.7-211.7: 3/8" carbonate vein with trace tourmaline. | 59902 | 210.7 | 211.7 | 1.0 | Tr | | | | | SPECIMEN AT 211.9' |
| 213.1 | 227.6 | FELDSPAR PORPHYRITIC DACITE: Similar to 168-190', disseminated chlorite and biotite blebs, 2" band of semi-massive pyrite at 219.5', lower contact grades into the rhyolite lapilli tuff, sulphides at 70'. | | | | | | | | | | |
| | | 218.1-220.6: As above. | 59903 | 218.1 | 220.6 | 2.5 | 0.10 | | | | | |
| 227.6 | 251.9 | RHYOLITE CRYSTAL TUFF AND FLOW: Dark grey to light green, very fine grained with medium grained phenocrysts, hardness > 5, in tuffaceous zone disseminated chlorite blebs are common, trace disseminated pyrite, variable phenocryst density. | | | | | | | | | | SPECIMEN AT 227.9' |
| | | 229.2-235.2: Flow: light yellow green, uniform texture, minor orange stringers. | | | | | | | | | | SPECIMEN AT 231.3' |
| 251.9 | 265.2 | ALTERED FELDSPAR PORPHYRY: Similar to 203-210'. | | | | | | | | | | |
| 265.2 | 270.8 | FELSIC VOLCANIC: Light to dark grey, very fine to fine grained, hardness > 5, biotite and chlorite blebs and veinlets occur in irregular voids, trace pyrite, grossly schistose, 1% irregular carbonate stringers. | | | | | | | | | | |

T-2465
ASSESSMENT WORK

DOME EXPLORATION (CANADA) LIMITED
DIAMOND DRILL RECORD

HOLE NO: 182-10

PAGE NO: 5 of 9

| FOOTAGE | | DESCRIPTION | SAMPLE | | | | Au dwt/ton | Ag | Cu % | Zn % | | |
|---------|-------|--|--------|-------|-------|--------|---------------|----|---------|---------|--|--------------------|
| from | to | | Nº | from | to | Length | | | | | | |
| 270.8 | 275.4 | ALTERED FELDSPAR PORPHYRY: Similar to 203-210' | | | | | | | | | | |
| 275.4 | 285.8 | FELSIC VOLCANIC: Similar to 265-270'. | | | | | | | | | | SPECIMEN AT 279.5' |
| | | 280.8-285.8: Trace pyrite blebs, trace-1% carbonate stringers, heavily chloritized zone from 282.6-283.2'. | 59904 | 280.8 | 285.8 | 5.0 | Tr | | | | | |
| 285.8 | 293.4 | BASALT: Massive, chloritized. Medium green and white "salt & pepper" texture, fine to medium grained, hardness 3, 2% carbonate stringers, minor acid volcanic bands at 286.6 and 291.6'. | | | | | | | | | | SPECIMEN AT 287.2' |
| 293.4 | 315.6 | FELSIC VOLCANIC: Similar to 265-270'; chlorite veins at 288.3 and 288.7', finely disseminated magnetite (locally). -MAGNETIC- | | | | | | | | | | SPECIMEN AT 297.7' |
| | | 304.3-306.2: Carbonate veins at 304.5, 304.6, 304.8; white quartz stringer at 305.8'; foliation at 60°, upper 1.4' of sample is magnetic. | 59905 | 304.3 | 306.2 | 1.9 | Tr | | | | | |
| | | 310.0-315.0: 5% white quartz veins, trace pyrite. | 59906 | 310.0 | 315.0 | 5.0 | Tr | | | | | |
| 315.6 | 319.8 | RHYOLITE CRYSTAL TUFF: Similar to 227-251'; light to moderate carbonatization, trace pyrite, locally moderately magnetic. -LOCALLY MAGNETIC- | | | | | | | | | | |
| | | 315.0-319.8: Locally sheared, quartz vein at 317.4' | 59907 | 315.0 | 319.8 | 4.8 | 0.10 | | | | | |
| 319.8 | 325.4 | FELDSPAR PORPHYRITIC DACITE: Medium grey to light green, fine grained, hardness > 5, locally magnetic, trace pyrite. -LOCALLY MAGNETIC- | | | | | | | | | | |
| | | 323.4-325.4: 3-5% carbonate stringers, trace pyrite and pyrrhotite, magnetic. | 59908 | 323.4 | 325.4 | 2.0 | 0.10 | | | | | |

T-2465
ASSESSMENT WORK

DOME EXPLORATION (CANADA) LIMITED
DIAMOND DRILL RECORD

HOLE NO: 182-10
PAGE NO: 6 of 9

| FOOTAGE | | DESCRIPTION | SAMPLE | | | | Au dwt/ton | Ag | Cu % | Zn % | | |
|---------|-------|--|--------|-------|-------|--------|---------------|----|---------|---------|--|--|
| from | to | | NO | from | to | Length | | | | | | |
| 325.4 | 357.0 | FELDSPAR PORPHYRY: Chloritized, coarse grained. (TONALITE?): Medium green grey, fine grained chloritized matrix, coarse grained phenocrysts have indistinct grain boundaries, hardness > 5-1/2, trace disseminated pyrite, moderate chloritization, light to moderate carbonatization, non-foliated, locally moderately magnetic, -LOCALLY MAGNETIC- | | | | | | | | | | |
| | | 329.3-330.3: Silicified, trace irregular quartz stringer, trace pyrite. | 59909 | 329.3 | 330.3 | 1.0 | Tr | | | | | |
| | | 342.4-347.4: Trace-1% carbonate stringers. | 59910 | 342.4 | 347.4 | 5.0 | Tr | | | | | |
| | | 347.4-350.6: Similar to 227-251': trace-1% pyrite local siliceous pink alteration. | 59911 | 347.4 | 350.6 | 3.2 | Tr | | | | | |
| | | 350.6-352.3: Feldspar porphyritic dacite: trace pyrite, trace magnetite. | 59912 | 350.6 | 352.3 | 1.7 | 0.20 | | | | | |
| | | 352.3-357.0: Similar to 227-251'. | 59913 | 352.3 | 357.0 | 4.7 | 0.10 | | | | | |
| 357.0 | 383.4 | RHYOLITE LAPILLI TUFF: Light green grey, fine grained matrix with fine to coarse grained subhedral clasts, hardness > 5, moderate to heavy chloritiz- ation, upper 10' has carbonate stringers, locally sheared, sharp lower contact, whole rock analyses at 364.2' plots as a calc alkaline dacite. | | | | | | | | | | |
| | | 357.0-362.0: 1% carbonate veinlets, trace pyrite. | 59914 | 357.0 | 362.0 | 5.0 | Tr | | | | | |
| | | 376.9-378.4: 1% pyrite blebs. | 59915 | 376.9 | 378.4 | 1.5 | 0.10 | | | | | |
| 383.4 | 406.8 | RHYOLITE CRYSTAL TUFF: Similar to 227-251', dense- ly packed phenocrysts (feldspar and quartz) decrease in grain size with depth. | | | | | | | | | | |

ASSESSMENT WORK

T-2465

DOME EXPLORATION (CANADA) LIMITED
DIAMOND DRILL RECORD

HOLE No: 182-10
PAGE No: 7 of 9

| FOOTAGE from | to | DESCRIPTION | SAMPLE | | | | Au dwt/ton | Ag | Cu % | Zn % | | |
|-----------------|-------|---|--------|-------|-------|--------|---------------|----|---------|---------|--|--|
| | | | No | from | to | Length | | | | | | |
| | | 401.5-402.5: Pyrite veinlet at 20°. | 59916 | 401.5 | 402.5 | 1.0 | 0.20 | | | | | |
| 406.8 | 411.7 | FELDSPAR PORPHYRITIC DACITE (TONALITE?): Similar to 325-357'; diffuse phenocrysts. | | | | | | | | | | |
| | | 406.8-411.7: 1% carbonate stringers; quartz veins at 407.3, 409.6, 410.9'. | 59917 | 406.8 | 411.7 | 4.9 | 0.20 | | | | | |
| 411.7 | 421.3 | ALTERED FELDSPAR PORPHYRY: Similar to 203-210'; 1% blebs, chlorite blebs and stringers are common. moderate carbonatization; quartz veins at 418.9-419.3, 420.0-420.3'; whole rock analyses at 414.2' plots as a calc alkaline andesite to dacite. - MODERATE MAGNETIC - | | | | | | | | | | |
| | | 411.7-421.3: As above. | 59918 | 411.7 | 415.4 | 3.7 | 0.20 | | | | | |
| | | | 59919 | 415.4 | 420.4 | 5.0 | 0.10 | | | | | |
| | | Note: core was put in Box 16 from right to left. | 59920 | 420.4 | 421.3 | 0.9 | 0.20 | | | | | |
| 421.3 | 433.4 | RHYOLITE LAPILLI AND CRYSTAL TUFF ± feldspar porphyritic dacite: Similar to 357-383; 3-5% disseminated pyrite blebs and stringers associated with heavily chloritized matrix, minor carbonate stringers, whole rock analyses at 424.2' plots as a calc alkaline dacite. | | | | | | | | | | |
| | | 421.3-423.7: 3-5% pyrite and chlorite stringers, irregular quartz stringer. | 59921 | 421.3 | 423.7 | 2.4 | 0.40 | | | | | |
| | | 423.7-428.7: Minor carbonate stringers, trace pyrite; silicified. | 59922 | 423.7 | 428.7 | 5.0 | 0.10 | | | | | |
| | | 431.6-433.4: 1% pyrite, trace carbonate stringers | 59923 | 431.6 | 433.4 | 1.8 | 0.10 | | | | | |

ASSESSMENT WORK

T-2465

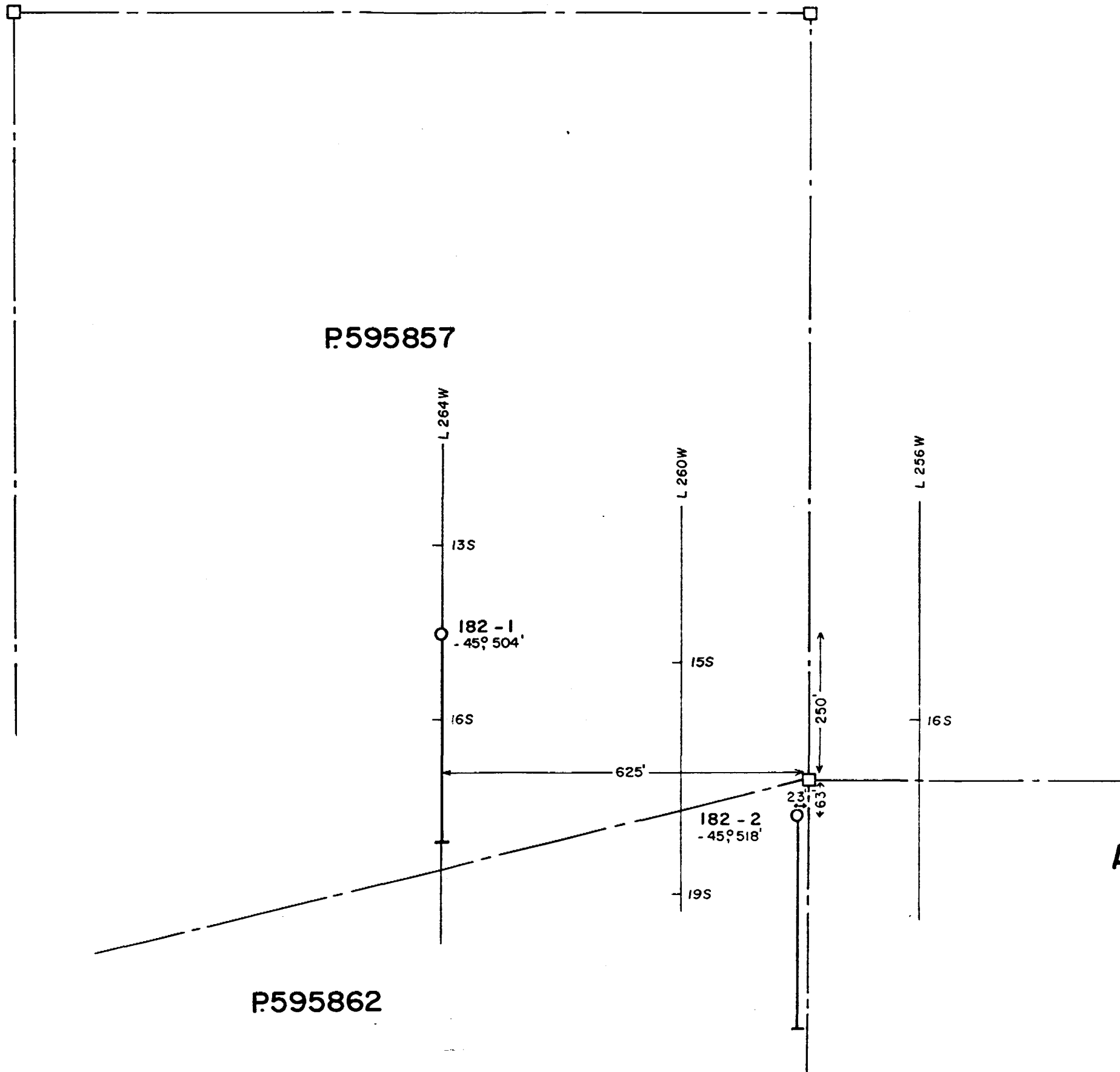
DOME EXPLORATION (CANADA) LIMITED
DIAMOND DRILL RECORD

WOLE No: 182-10
PAGE No: 8 of 9

| FOOTAGE from | to | DESCRIPTION | SAMPLE | | | | Au dwt/ton | Ag | Cu % | Zn % | | |
|-----------------|-------|--|--------|-------|-------|--------|---------------|----|---------|---------|--|--|
| | | | NS | from | to | Length | | | | | | |
| 433.4 | 445.9 | FELSIC VOLCANIC: Similar to 265-270'; greenish, trace finely disseminated pyrite, trace carbonate veinlets at 40-60°, light to moderate chloritization. | 59924 | 440.9 | 445.9 | 5.0 | Tr | | | | | |
| 445.9 | 447.7 | FELDSPAR PORPHYRY (TONALITE): Similar to 325-357'; thin section at 447.2' classified rock as a tonalite. | | | | | | | | | | |
| 447.7 | 452.3 | ALTERED FELSIC VOLCANIC: Medium grey to pinkish grey, fine grained, hardness 3-1/2 to 4, heavy carbonatization, trace pyrite veinlets and blebs associated with trace carbonate stringers. - MAGNETIC - | | | | | | | | | | |
| | | 447.7-452.3: As above. | 59925 | 447.7 | 452.3 | 4.6 | 0.40 | | | | | |
| 452.3 | 466.5 | FELSIC CRYSTAL TUFF-FELDSPAR PORPHYRITIC DACITE: equigranular densely packed feldspar phenocrysts; similar to 227-251'; medium green grey to pinkish green, -LOCALLY MAGNETIC- | | | | | | | | | | |
| 466.5 | 469.8 | ALTERED FELSIC VOLCANIC: Similar to 447-452'. | 59926 | 466.5 | 469.8 | 3.3 | 0.10 | | | | | |
| 469.8 | 478.2 | FELSIC CRYSTAL TUFF-FELDSPAR PORPHYRITIC DACITE: Similar to 452-466'. | | | | | | | | | | |
| | | 473.5-475.2: Net like network of quartz carbonate stringers at 0-10°, bleached from 474.1-479.9', fractured (possible shear at 60°). | 59927 | 473.5 | 475.2 | 1.7 | 0.10 | | | | | |
| | 478.2 | END OF HOLE | | | | | | | | | | |
| | | Rocks encountered were dominantly acid volcanic and upper level acid intrusives. Massive sulphide | | | | | | | | | | |

ASSESSMENT WORK

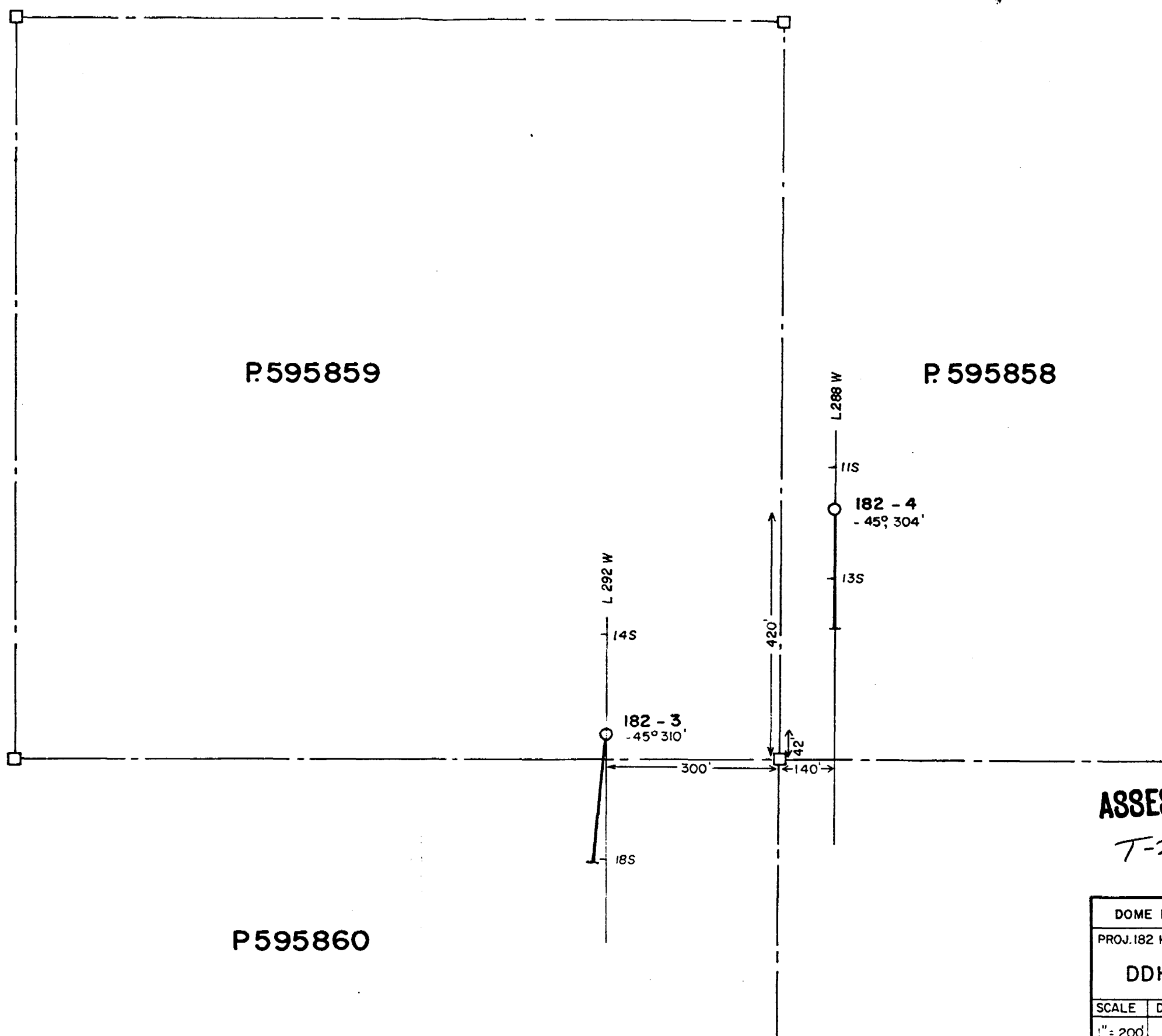
T-2465



ASSESSMENT WORK

T-2465

| | | | | |
|--------------------------------------|-----------|------|------------|----------|
| DOME EXPLORATION (CANADA) LTD. | | | | |
| PROJ. 182 KEITH & MUSKEGO TWP., ONT. | | | | |
| DDH LOCATIONS | | | | |
| SCALE | DATE | BY | N.T.S. No. | DWG. No. |
| 1" = 200' | DEC. 1983 | T.S. | 42-8-1 | 182-14 |



P.595859

P.595858

P.595860

L.292 W
145
185

182 - 3
- 45° 31'

300'

420'

140'

L.288 W
115
135

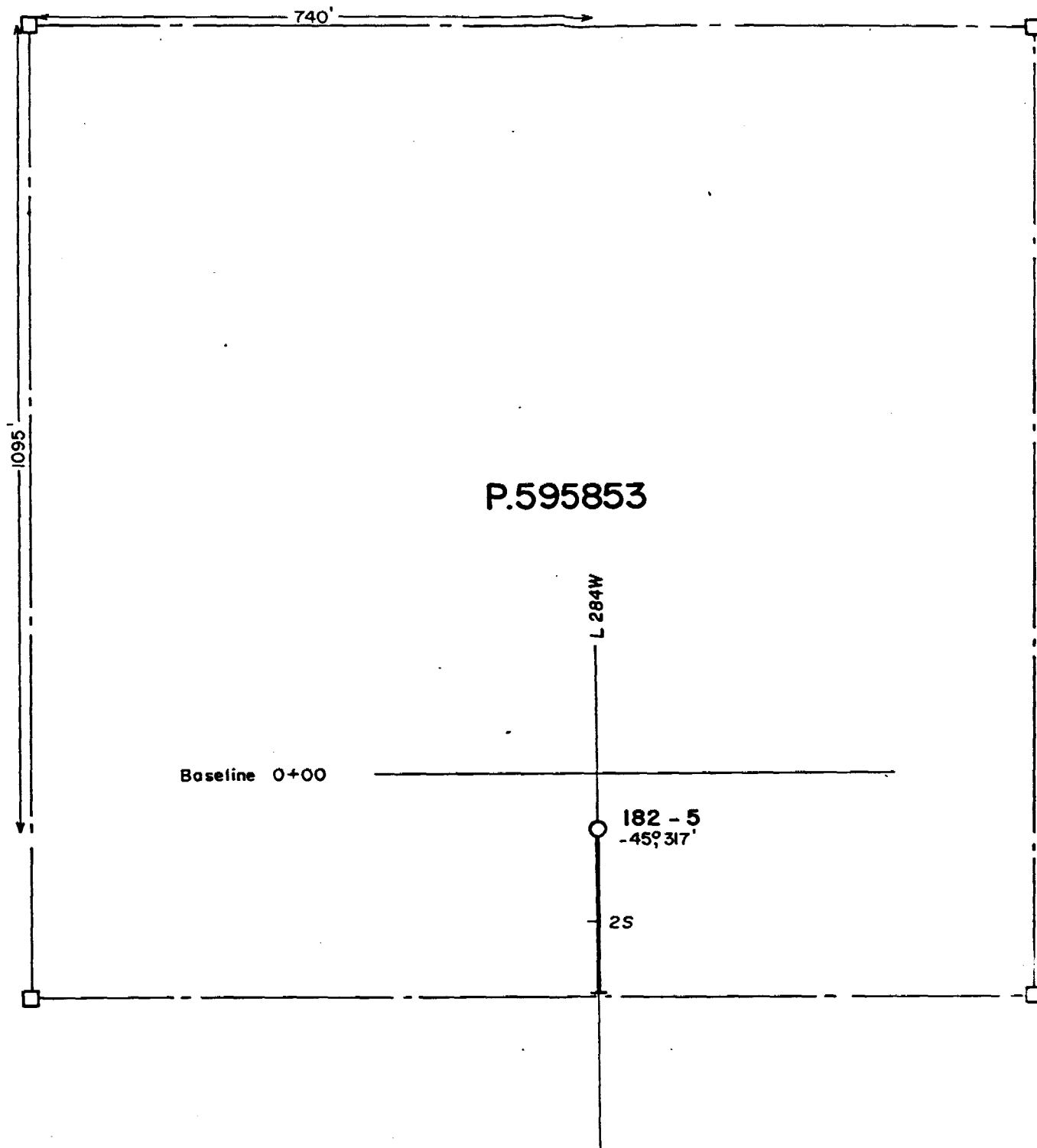
182 - 4
- 45° 30'

ASSESSMENT WORK

T-2465



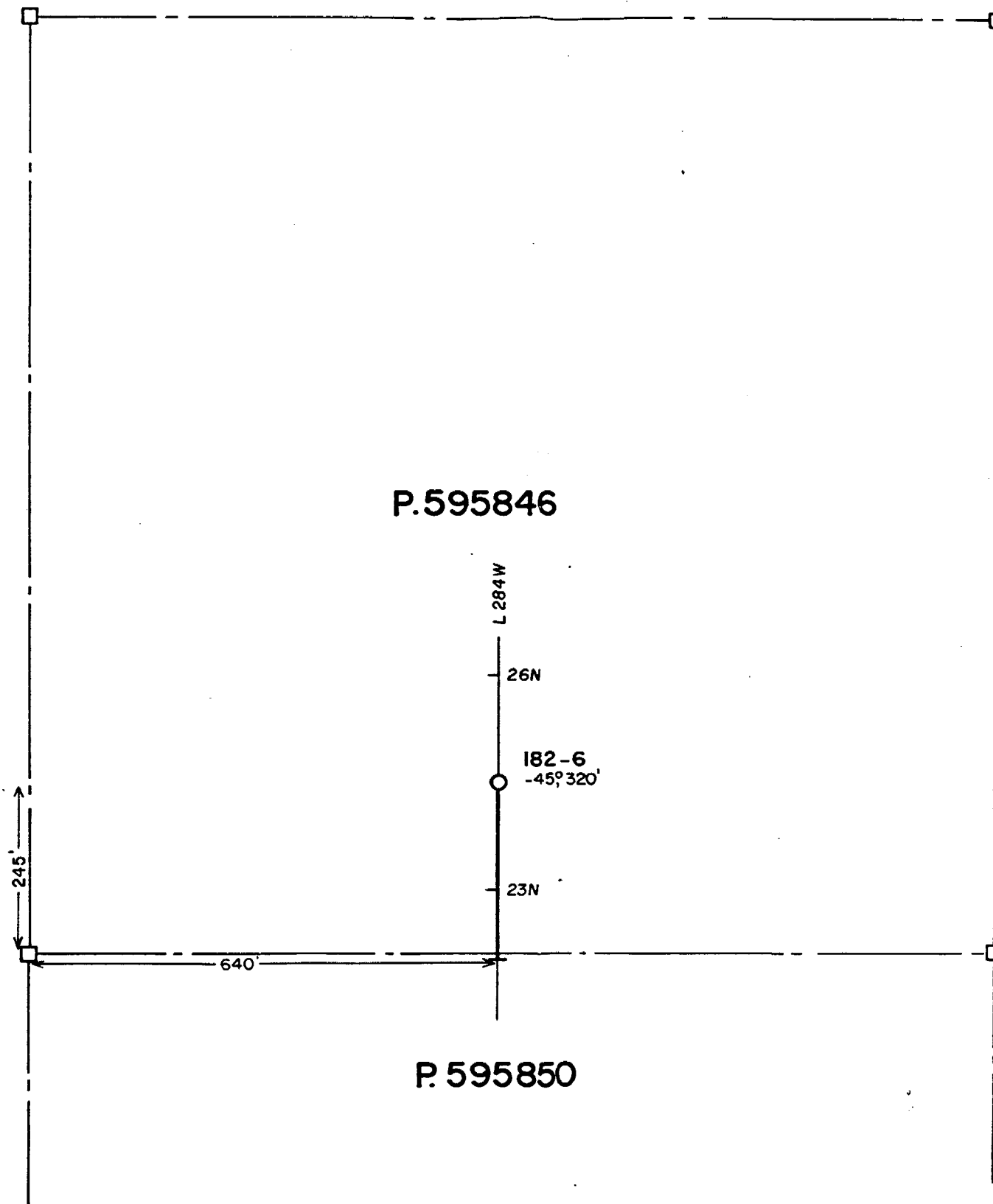
| | | | | |
|--------------------------------------|----------|------|------------|----------|
| DOME EXPLORATION (CANADA) LTD. | | | | |
| PROJ. 182 KEITH & MUSKEGO TWP., ONT. | | | | |
| DDH LOCATIONS | | | | |
| SCALE | DATE | BY | N.T.S. No. | DWG. No. |
| 1" = 200' | DEC 1983 | T.S. | 42-B-1 | 182-15 |



ASSESSMENT WORK

T-2465

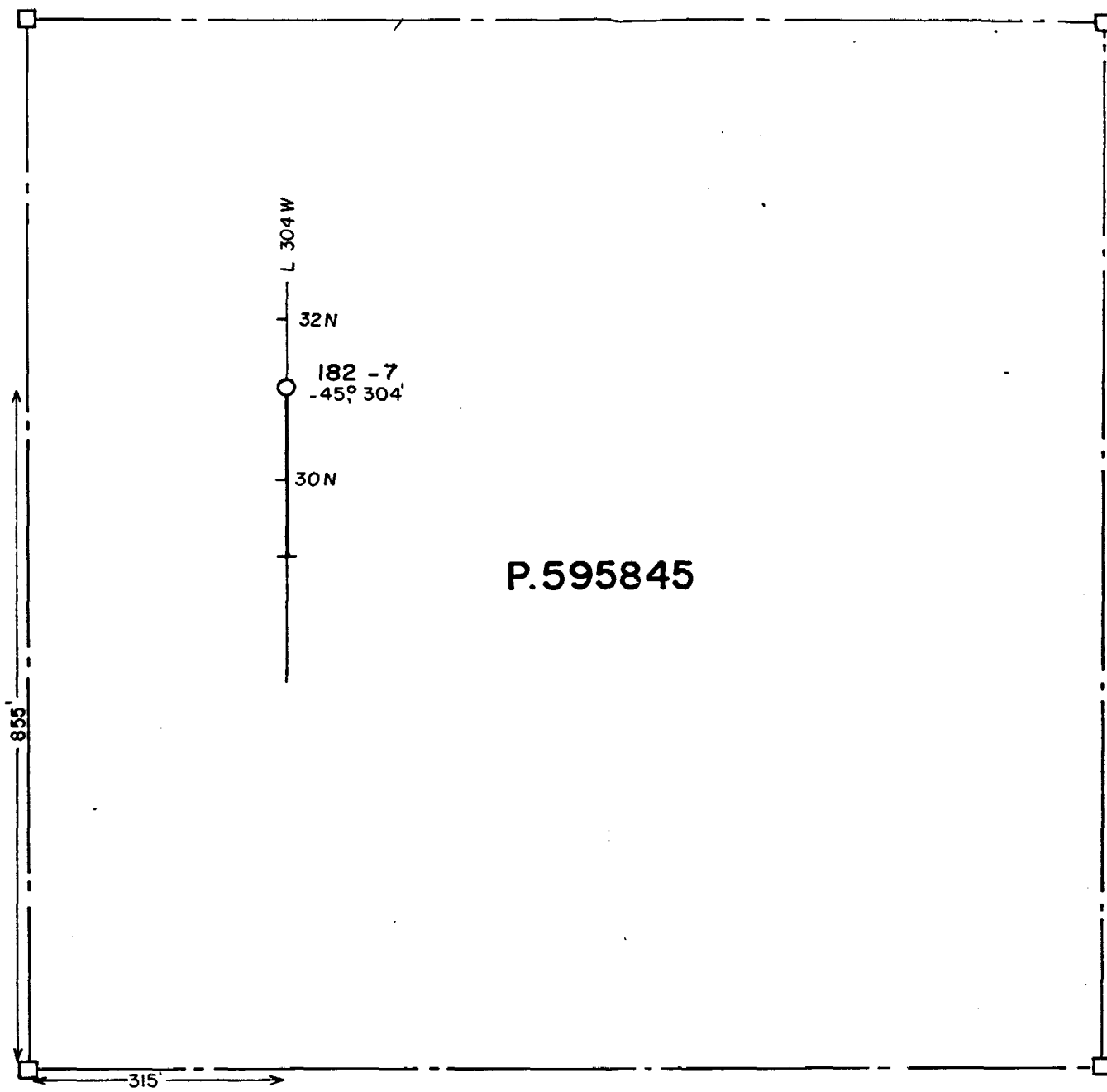
| DOME EXPLORATION (CANADA) LTD. | | | | |
|-------------------------------------|-----------|------|------------|----------|
| PROJ. 182 KEITH & MUSKEGO TWP, ONT. | | | | |
| DDH LOCATIONS | | | | |
| SCALE | DATE | BY | N.T.S. No: | DWG. No: |
| 1" = 200' | DEC. 1983 | T.S. | 42-B-1 | 182-16 |



ASSESSMENT WORK

T-2465

| | | | | |
|-------------------------------------|--------------|------|------------|----------|
| DOME EXPLORATION (CANADA) LTD. | | | | |
| PROJ. 182 KEITH & MUSKEGO TWP, ONT. | | | | |
| DDH LOCATIONS | | | | |
| SCALE | DATE | BY | N.T.S. No. | DWG. No. |
| 1" = 200' | DEC. 1983 | T.S. | 42-B-1 | 182-17 |

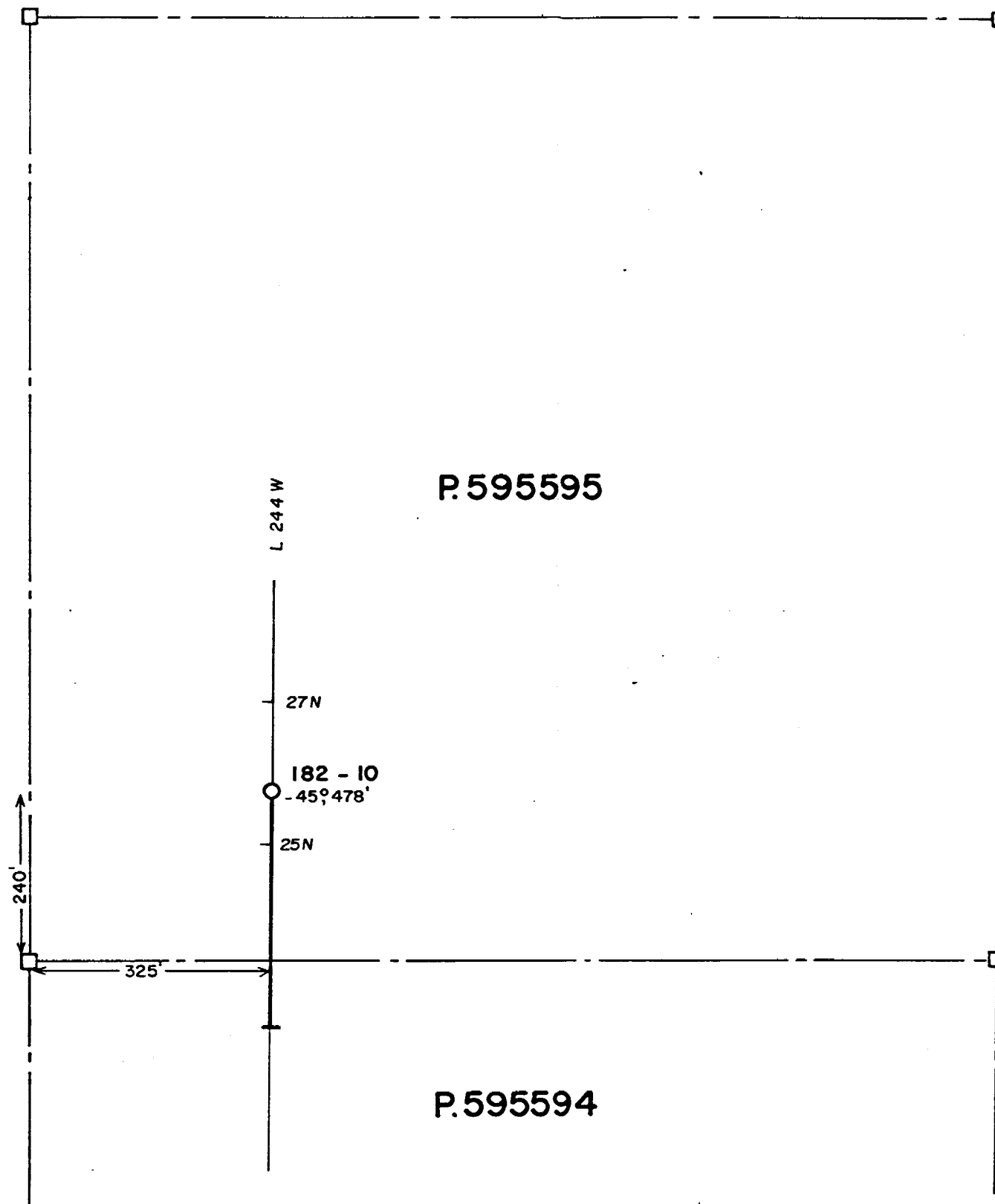


P.595845



ASSESSMENT WORK
T-2465

| | | | | |
|-------------------------------------|-----------|------|------------|----------|
| DOME EXPLORATION (CANADA) LTD. | | | | |
| PROJ. 182 KEITH & MUSKEGO TWP, ONT. | | | | |
| DDH LOCATIONS | | | | |
| SCALE | DATE | BY | N.T.S. No: | DWG. No: |
| 1" = 200' | DEC. 1983 | T.S. | 42-B-1 | 182-18 |



P.595595

P.595594

ASSESSMENT WORK

T-2465



| | | | | |
|-------------------------------------|-----------|------|------------|----------|
| DOME EXPLORATION (CANADA) LTD. | | | | |
| PROJ. 182 KEITH & MUSKEGO TWP, ONT. | | | | |
| DDH LOCATIONS | | | | |
| SCALE | DATE | BY | N.T.S. No. | DWG. No. |
| 1" = 200' | DEC. 1983 | T.S. | 42-B-1 | 182-21 |

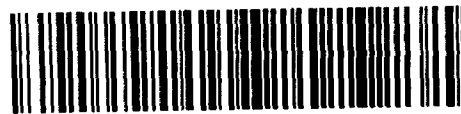


Ministry of
Natural
Resources

Report
of Work

PROJECT 182

#15/84
The Min



42801NW0043 48 KEITH

900

Name and Postal Address of Recorded Holder

DOMEX EXPLORATION (CANADA) LIMITED

Muskogo & Keith Exp.

A. 21304

BOX 270, SUITE 2700, 1 FIRST CANADIAN PLACE, TORONTO, ONTARIO M5X 1H1

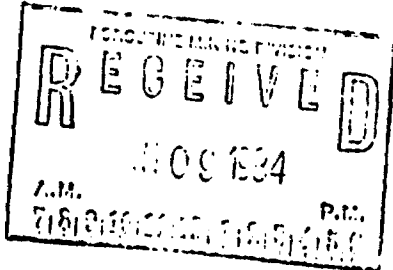
Summary of Work Performance and Distribution of Credits

| Total Work Days Cr. claimed 4023 | Mining Claim | | Work Days Cr. | Mining Claim | | Work Days Cr. | Mining Claim | | Work Days Cr. |
|--|-----------------------|--------|---------------|--------------|--------|---------------|--------------|--------|---------------|
| | Prefix | Number | | Prefix | Number | | Prefix | Number | |
| for Performance of the following work. (Check one only) | SEE ATTACHED SCHEDULE | | | | | | | | |
| <input type="checkbox"/> Manual Work | | | | | | | | | |
| <input type="checkbox"/> Shaft Sinking Drifting or other Lateral Work. | | | | | | | | | |
| <input type="checkbox"/> Compressed Air, other Power driven or mechanical equip. | | | | | | | | | |
| <input type="checkbox"/> Power Stripping | | | | | | | | | |
| <input checked="" type="checkbox"/> Diamond or other Core drilling | | | | | | | | | |
| <input type="checkbox"/> Land Survey | | | | | | | | | |

All the work was performed on Mining Claim(s): SEE ATTACHED SCHEDULE

Required Information eg: type of equipment, Names, Addresses, etc. (See Table Below)

| HOLE NO. | LENGTH (ft) | DATES DRILLED |
|----------|-------------|------------------------|
| 182-1 | 504 | Jan. 13-15, 1983 |
| 182-2 | 518 | Jan. 16-17, 1983 |
| 182-3 | 310 | Jan. 17-18, 1983 |
| 182-4 | 304 | Jan. 18-19, 1983 |
| 182-5 | 317 | Jan. 25-26, 1983 |
| 182-6 | 320 | Jan. 26-27, 1983 |
| 182-7 | 304 | Jan. 28-29, 1983 |
| 182-8 | 306 | Jan. 27-28, 1983 |
| 182-9 | 361 | Feb. 1-2, 1983 |
| 182-10 | 478 | Jan. 30 - Feb. 1, 1983 |
| 182-11A | 301 | Jan. 30 - Feb. 1, 1983 |



ASSESSMENT WORK
T-2465

All core AQ
Drilling by Moderne Diamond Drilling Ltd.
Val d'Or, Quebec

| | |
|--------------------------------|--|
| Date of Report Jan. 3, 1984 | Recorded Holder or Agent (Signature) <i>E. H. Piquish</i> |
|--------------------------------|--|

Certification Verifying Report of Work

I hereby certify that I have a personal and intimate knowledge of the facts set forth in the Report of Work annexed hereto, having performed the work or witnessed same during and/or after its completion and the annexed report is true.

Name and Postal Address of Person Certifying

L. B. Halladay, P.O. Box 270, 1 First Canadian Place, Toronto, Ontario M5X 1H1

Date Certified

Jan. 3, 1984

Certified by (Signature)

L. B. Halladay

Table of Information/Attachments Required by the Mining Recorder

| Type of Work | Specific Information per type | Other Information (Common to 2 or more types) | Attachments |
|---|---|---|--|
| Manual Work | Nil | Names and addresses of men who performed manual work/operated equipment, together with dates and hours of employment. | Work Sketch: these are required to show the location and extent of work in relation to the nearest claim post. |
| Shaft Sinking, Drifting or other Lateral Work | | | |
| Compressed air, other power driven or mechanical equip. | Type of equipment | Names and addresses of owner or operator | |
| Power Stripping | Type of equipment and amount expended. Note: Proof of actual cost must be submitted within 30 days of recording. | | |

PROJECT 182

SCHEDULE OF CLAIMS

| <u>Claim No.</u> | <u>Work Days Cr.</u> | <u>Claim No.</u> | <u>Work Days Cr.</u> |
|------------------|----------------------|------------------|----------------------|
| P.595565 | 80 | P.595650 | 80 |
| P.595566 | 80 | P.595651 | 80 |
| P.595567 | 80 | P.595652 | 80 |
| P.595568 | 80 | P.595653 | 80 |
| P.595569 | 80 | P.595654 | 80 |
| P.595570 | 80 | P.595655 | 80 |
| P.595571 | 80 | P.595656 | 80 |
| P.595572 | 80 | | |
| | | P.595845 | 80 |
| P.595584 | 80 | P.595846 | 80 |
| P.595585 | 80 | P.595847 | 80 |
| P.595586 | 80 | P.595848 | 80 |
| P.595587 | 80 | P.595849 | 80 |
| P.595588 | 80 | P.595850 | 80 |
| P.595589 | 80 | P.595851 | 80 |
| P.595590 | 80 | P.595852 | 80 |
| P.595591 | 80 | P.595853 | 80 |
| P.595592 | 80 | P.595854 | 80 |
| P.595593 | 80 | P.595855 | 80 |
| P.595594 | 80 | P.595856 | 80 |
| P.595595 | 80 | P.595857 | 80 |
| P.595596 | 80 | P.595858 | 80 |
| | | P.595859 | 80 |
| P.595647 | 80 | P.595860 | 80 |
| P.595648 | 80 | P.595861 | 103 |
| P.595649 | 80 | P.595862 | 80 |
| | | P.595863 | 80 |

All the work was performed on Mining Claims:

P.595552, P.595566, P.595568, P.595594, P.595595, P.595596,
P.595845, P.595846, P.595850, P.595853, P.595857, P.595858,
P.595859, P.595860, P.595862.

[Handwritten signature]
[Handwritten initials]

ASSESSMENT WORK

T-2465.