



42B01NW0073 23 KEITH

010

### Diamond Drilling

Township of Keith

Report N<sup>o</sup>: 23

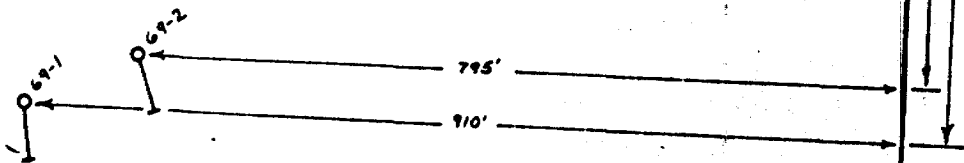
Work performed by: D. M. Ross/Mining Oriented Investments Ltd.

Claim N <sup>o</sup>	Hole N <sup>o</sup>	Footage	Date	Note
S 154834	69-1	104'	May/69	(1)
	69-2	101.2'	May/69	(1)
		<u>205.2</u>		

Notes:  
(1) 229/69



S 154834



S 154835

Core stored in Robt Barr  
Striker Township



DAVID C. HOPKINSON, P.E. ENGINEER IN CHARGE  
 MOIL  
 KEITH TWP.  
 D. D. H. LOCATION PLAN  
 1" = 200'  
 July 28/69  
*ETH*

PROPERTY Mining Oriented Investments Ltd.

TESTS

SHEET 1  
HOLE NO. 69-1

TOTAL DEPTH 104.0 CO-ORDINATES COLLAR  
 LOCATION S-154834 LAT. \_\_\_\_\_ DEP. \_\_\_\_\_  
 LOGGED BY Lalonde ELEVATION \_\_\_\_\_  
 DATE BEGUN May 24, 1969 AZIMUTH 177° 00'  
 DATE FINISHED May 21, 1969 ANGLE -50°

FOOTAGE	LGTH.	DESCRIPTION	SAMP. #
0.0 - 27.8	27.8	Siliceous tuff. V.f. to f. gr. Bedding. to to st. gr. Intruded by numerous qtz veins and veinlets which usually carry py. and pyrr. and a little chalc. Sulphides may locally be dissem. in the siliceous bedded tuffs. Several narrow massive sulphides 3/4" - 2 3/4" wide thru sect. May locally be crenulated.	
27.8 - 88.0	60.2	Siliceous tuff. F. to locally v.f. gr. Some bedding. to st. gr. to locally gr. or st. gr. Intruded by qtz veins and veinlets which may carry some sulphides and may locally be numerous. Sulphides may locally be finely and sparsely disseminated in the bedded tuffs. Locally crenulated.	
88.0 - 104.0	16.0	Siliceous tuff. V.f. gr. Bedded and crenulated. to st. gr. to gr. Intruded by qtz veins and veinlets which usually carry py. and pyrr. with a few streaks of chalc. Sulphides may locally be dissem. or occur as small massive blebs along the crenulated bedding planes.	
		XRP. (C. 840° diam.) core	

#229/59 - Keith Jump

David M. Ross

S-154834



PROPERTY Mining Oriented Investments Ltd.

TESTS

SHEET 1  
HOLE NO. 69-2

TOTAL DEPTH 101.2 CO-ORDINATES COLLAR  
LOCATION S-154834 LAT. \_\_\_\_\_ DEP. \_\_\_\_\_  
LOGGED BY Salanda ELEVATION \_\_\_\_\_  
DATE BEGUN May 29, 1969 AZIMUTH 168° 30'  
DATE FINISHED June 1, 1969 ANGLE -50°

FOOTAGE	LGTH.	DESCRIPTION	SAMP. #
0.0 - 54.5	54.5	Siliceous tuff. F. to v. f. gr. Some bedding which may be crenulated. Gr. to locally dk. gr. Intruded by qtz. veins and veinlets which may carry some pyrr. and py. and small speck of chalc. Locally some sparse dissem. sulphides along the crenulated bedding. Some carb. associated with qtz. veins. Few small scattered blebs of sulphides.	
54.5 - 66.5	12.0	Siliceous tuff. V. f. to f. gr. Bedded and crenulated. Dk. gr. to gr. Intruded by qtz. veins and veinlets which may carry py., pyrr. and some chalc. Sulphides sparsely dissem. usually along crenulated bedding planes, but may locally approach massive.	
66.5 - 87.9	21.4	Siliceous tuff. F. to v. f. gr. Bedded locally crenulated. Intruded by qtz. veinlets and veins which may carry some py. and pyrr. and rare speck chalc. Few sulphide blebs. Dk. gr. to gr.	
87.9 - 101.2	13.3	Siliceous tuff. V. f. to f. gr. Bedded, may be crenulated. Gr. to dk. gr. Intruded by qtz. veins and veinlets which carry py. and some chalc. Sulphides sparse to locally approaching mass. dissem. along locally	

