



42B01SE0013 24 PENHORWOOD

010

DIAMOND DRILLING

TOWNSHIP: PENHORWOOD TWP.

REPORT NO: 24

WORK PERFORMED FOR: Roseval Silica Inc.

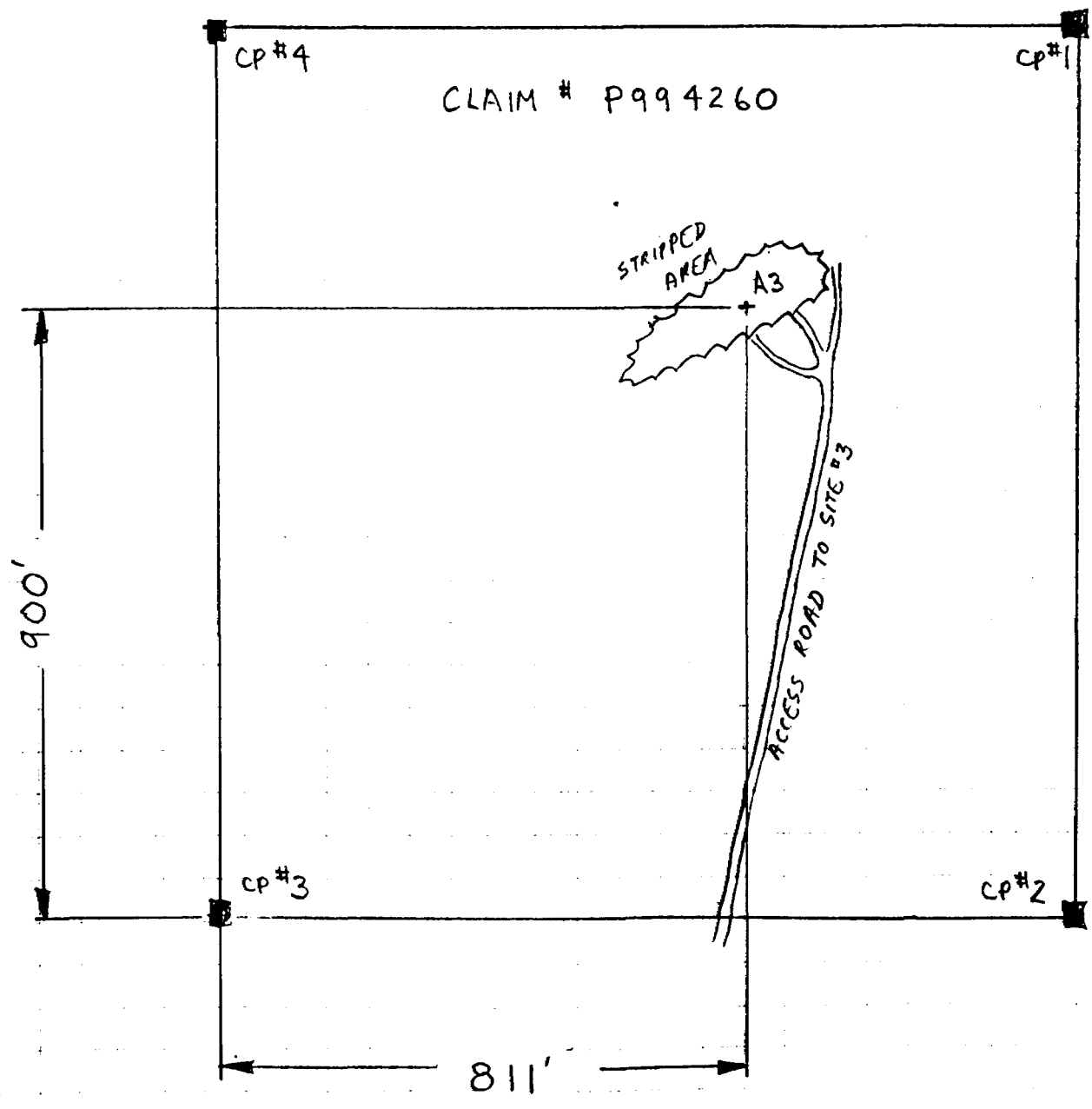
RECORDED HOLDER: SAME AS ABOVE (xx)

: OTHER ( )

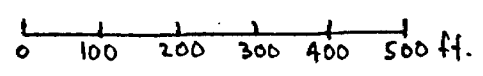
<u>CLAIM NO.</u>	<u>HOLE NO.</u>	<u>FOOTAGE</u>	<u>DATE</u>	<u>NOTE</u>
P 994260	RS-89-06	238'	Sept/89	(1)
	RS-89-07	288'	Sept/89	(1)
	RS-89-09	238'	Sept/89	(1)
	<i>13</i>	<i>764'</i>		

NOTES: (1) # W9006.020, filed Jan/90

INDEX MAP - SITE #3



Scale.



R. Komareckka

NOV. 11 1989

LOCATION ROSEVAL

N. \_\_\_\_\_ FOOTAGE/ANG. \_\_\_\_\_

E. \_\_\_\_\_ DIP -45° ON SURFACE.

ELEV. \_\_\_\_\_ DIP -29.0° @ 238'

AZ. 146° DIP \_\_\_\_\_

E.H. van Hees

Geological Services Inc.

ONTARIO GEOLOGICAL SURVEY  
ASSESSMENT FILES  
OFFICE  
JAN 15 1990  
RECEIVED

HOLE NO. RS-89-06

SHEET 1 OF 6

LOGGED BY: KIAN JENSEN

DATE Sept 30/89

CORE SIZE BQ

FROM	TO	DESCRIPTION	FROM	TO	SAMPLE NO.	LENGTH	Au O.P.T.
0.0	2.0	CASING					
2.0	59.0	SILICIFIED GRANITE OR METAVOLCANICS					
		- fine grained, pinkish brown with minor sections of pale greenish buff grading to pale greenish buff at 38.0 feet, sericitic alteration					
		- cut by narrow quartz veinlets 1/4" to 2.3 feet, occasionally veinlets have minor pyrite mineralization, minor granitic inclusion					
		- sulphides 1% to 2% overall, locally up to 5% very fine grained to fine grained pyrite; 18.0' to 59.0' up to 2% to 3% fine pyrite					
		- significant quartz veining at 3.6' to 4.2' CA=70°; 11.4' to 12.9' CA=55° and 85°; 13.5' to 15.9' CA=50° and broken; 16.5' to 17.8' CA=65° and irregular (with granitic inclusions and wispy pyrite in vein ~2%); 19.7' to 20.4' CA=irregular and 80° (1% to 2% pyrite); 23.3' to 24.4' CA=40° to 45°; 25.5' to 28.5' numerous 2" to 6" quartz veinlets.					
			16.5	18.0	14427		
			18.0	23.0	14428		
			43.0	48.0	14429		
			48.0	53.0	14430		
			53.0	59.0	14431		

LOCATION ROSEVAL

HOLE NO. RS-89-06

N. \_\_\_\_\_ FOOTAGE/ANG. \_\_\_\_\_

SHEET 2 OF 6

E. \_\_\_\_\_ DIP \_\_\_\_\_  
 ELEV. \_\_\_\_\_ DIP \_\_\_\_\_  
 AZ. \_\_\_\_\_ DIP \_\_\_\_\_

E.H. van Hees

LOGGED BY: KIAN JENSEN  
 DATE \_\_\_\_\_

Geological Services Inc.

FROM	TO	DESCRIPTION	FROM	TO	SAMPLE NO.	LENGTH	Au O.P.T.		
59.0	63.6	QUARTZ VEIN	59.0	63.6	15499				
		- milky white quartz, minor chloritic mafic to ultramafic metavolcanic inclusions from 62.0' to 63.2' with 1% to 2% fine grained pyrite and blebs associated with the metavolcanics							
		- 62.7' - local splashes of chalcopyrite in quartz vein.							
63.6	73.3	TALCOSE CHLORITIC SCHIST							
		- fine grained, blackish to blackish dark green, mafic to ultramafic, extremely schistose, wispy carbonate stringers parallel to schistosity, with minor wispy to kinkled quartz carbonate veinlets at 63.95' and 69.9' to 70.05'.							
		- scattered to <1% fine grained euhedral pyrite							
		- 67.4' - shearing CA=52°							
73.3	114.6	QUARTZ VEIN	73.3	78.0	15500				
		- milky white quartz with scattered chlorite on fractures <1%,	78.0	83.0	14351				
		- minor black green talcose chloritic schist inclusions at 81.0';	83.0	88.0	14352				

LOCATION ROSEVAL

HOLE NO. RS-89-06

N. \_\_\_\_\_ FOOTAGE/ANG. \_\_\_\_\_

SHEET 3 OF 6

E. \_\_\_\_\_  
 ELEV. \_\_\_\_\_  
 AZ. \_\_\_\_\_

DIP \_\_\_\_\_  
 DIP \_\_\_\_\_  
 DIP \_\_\_\_\_

E.H. van Hees  
*Geological Services Inc.*

LOGGED BY: KIAR JENSEN  
 DATE \_\_\_\_\_

FROM	TO	DESCRIPTION	FROM	TO	SAMPLE NO.	LENGTH	Au O.P.T.		
		81.7' to 81.9' ; 82.35' to 82.5' , 83.0'	88.0	93.0	14353				
		- 86.6' to 87.5' - quartz sample to G.L.	93.0	98.0	14354				
		- 87.75' to 93.0' - chloritic inclusions 10% to 15%	98.0	103.0	14355				
		- 90.0' to 90.15' - granitic inclusions	103.0	108.0	14356				
		- 90.75' to 91.25' - talcose chloritic schist inclusion	108.0	114.6	14357				
		- 93.1' to 93.5' - talcose chloritic schist inclusion							
		- 93.5' to 95.3' - granitic inclusion with 1% to 2% fine grained pyrite							
		- 95.3' - contact kinkled CA ~ 45°							
		- 95.3' to 103.0' - <0.5% chloritic inclusions							
		- 103.0' to 114.6' - milky white quartz, no inclusion, barren of sulphides							
		- 112.2' to 113.5' - sample to G.L.							
114.6	122.6	CHLORITIC TALCOSE SCHIST							
		- as above, no carbonatization, trace to <1% fine grained pyrite	119.5	123.0	14358				
		- 118.5' - schistosity CA = 63°							
		- 119.5' to 121.1' - quartz vein with chloritic inclusions at 120.7' to 120.8'							
		- 119.5' to 123.0' - 50% quartz 50% C.T.S.							

LOCATION ROSEVAL

HOLE NO. RS-89-06

N. \_\_\_\_\_ FOOTAGE/ANG. \_\_\_\_\_

SHEET 4 OF 6

E. \_\_\_\_\_ DIP \_\_\_\_\_

E.H. van Hees

LOGGED BY: KIAN JENSEN

ELEV. \_\_\_\_\_ DIP \_\_\_\_\_

Geological Services Inc.

AZ. \_\_\_\_\_ DIP \_\_\_\_\_

DATE \_\_\_\_\_

FROM	TO	DESCRIPTION	FROM	TO	SAMPLE NO.	LENGTH	Au O.P.T.		
		- 122.6' - Contact CA = 35° irregular	123.0	128.0	14359				
			128.0	133.0	14360				
122.6	221.7	QUARTZ VEIN	133.0	138.0	14361				
		- milky white quartz with chloritic talcose schist inclusions at	138.0	143.0	14362				
		124.0' to 124.55'; 124.6' to 125.4'; 127.7' to 128.3'; 129.1' to 129.8' (with	143.0	148.0	14363				
		granitic inclusions at 129.6' to 129.75'); 130.7' to 131.0'; 132.7'; 137.1' to	148.0	153.0	14364				
		137.3'; 140.5' to 141.0' (with 1% to 2% fine grained pyrite); 158.2' to	153.0	158.0	14365				
		158.4' (carbonate chloritic talcose schist);	158.0	163.0	14366				
		- 165.4' to 167.2' - sample to G.L. pure milky white quartz.	163.0	168.0	14367				
		- 181.5' to 183.5' - sample to G.L. pure milky white quartz	168.0	173.0	14368				
		- 184.2' - pale green mica inclusion	173.0	178.0	14369				
		- 184.7' to 186.4' - medium grey, fine grained volcanic tuff CA = 80° and 40°	178.0	184.7	14370				
		- 186.4' to 187.2' - medium grey tuff inclusions and wispy chloritic inclusions	187.0	193.0	14371				
		- 187.2' to 187.6' - emerald green chrome mica flecks.	193.0	198.0	14372				
		- 191.7' to 191.85' - chloritic volcanic inclusions	198.0	203.0	14373				
		- 192.6' to 192.85' - chloritic volcanic inclusion with green chrome mica	203.0	208.0	14374				
		- 196.15' to 196.3' - patches and wisps of chrome mica							

LOCATION ROSEVAL

HOLE NO. RS-89-06

N. \_\_\_\_\_ FOOTAGE/ANG. \_\_\_\_\_

SHEET 5 OF 6

E. \_\_\_\_\_ DIP \_\_\_\_\_

E.H. van Hees

LOGGED BY: KIAN JENSEN

ELEV. \_\_\_\_\_ DIP \_\_\_\_\_

Geological Services Inc.

DATE \_\_\_\_\_

AZ. \_\_\_\_\_ DIP \_\_\_\_\_

FROM	TO	DESCRIPTION	FROM	TO	SAMPLE NO.	LENGTH	Au O.P.T.
		-205.1' - carbonate mass with chrome mica	208.0	213.0	14375		
		-205.4' to 207.7' - fine to medium grained, greyish green metavolcanic inclusion with white carbonate patches on contacts and minor chrome mica flecks,	213.0	218.0	14376		
		- quartz veinlets at 205.9' to 206.4' 1" wide, low angle to CA; 206.9' to 207.3' irregular quartz veinlet; 1" at 207.5' CA=50°					
221.7	238.0	MAFIC METAVOLCANICS TO CHLORITIC SCHIST					
		- fine grained, black to greyish black green, with greyish to grey buff stretched fragments, scattered fine grained pyrite					
		- 223.0' - schistosity CA=74° to 75°					
		- 223.6' to 224.0' - quartz veinlet with minor carbonate					
		- 229.0' to 238.0' - grading into chloritic schist					
		- 227.0' to 227.3' - quartz veinlet CA=53°					
		- 230.2' to 230.7' - quartz veinlet with chloritic wisps CA=58°					
		- 235.55 to 235.75' - quartz veinlet CA=70°					

LOCATION ROSEVAL

N. \_\_\_\_\_ FOOTAGE/ANG. \_\_\_\_\_

E. \_\_\_\_\_ DIP \_\_\_\_\_

ELEV. \_\_\_\_\_ DIP \_\_\_\_\_

AZ. \_\_\_\_\_ DIP \_\_\_\_\_

E.H. van Hees

Geological Services Inc.

HOLE NO. RS-89-06

SHEET 6 OF 6

LOGGED BY: KIAN JENSEN

DATE \_\_\_\_\_

FROM	TO	DESCRIPTION	FROM	TO	SAMPLE NO.	LENGTH	Au O.P.T.
238.0	251.8	QUARTZ VEIN	238.0	243.0	14432		
		- whitish with orange to orange-red carbonate, 10% to 20% ;	243.0	248.0	14433		
		- chloritic inclusions about 1%,	248.0	251.8	14434		
		- quartz whitish to greyish white					
251.8	288.0	CHLORITIC SCHIST					
		- fine grained, black green, carbonated wisps and patches, minor					
		2" to 4" irregular quartz carbonate veinlets, scattered to trace					
		pyrite, fine grained,					
		- 272.0' - 1" mud seam					
		- 272.9' - 1" mud seam					
		- 273.7' to 277.45' - LOST CORE					
		- 287.5' - 1" mud seam					
288.0		END OF HOLE					





LOCATION ROSEVAL

HOLE NO. RS-89-07

N. \_\_\_\_\_ FOOTAGE/ANG. \_\_\_\_\_

SHEET 1 OF 8

E. DIP -45° ON SURFACE

E.H. van Hees

ONTARIO GEOLOGICAL SURVEY  
ASSESSMENT FILES LOGGED BY: \_\_\_\_\_  
OFFICE DATE \_\_\_\_\_  
JAN 15 1990

LOGGED BY: KIAN JENSEN

ELEV. \_\_\_\_\_ DIP 31.5° @ 288'

Geological Services Inc.

Sept 30/89

AZ. \_\_\_\_\_ DIP \_\_\_\_\_

CORE SIZE BQ

140°

FROM	TO	DESCRIPTION	FROM	TO	SAMPLE NO.	LENGTH	Au O.P.T.		
0.0	5.0	CASING							
5.0	63.9	SILICIFIED GRANITE OR METAVOLCANICS							
		- fine grained, pinkish brown with sections of pale greenish buff (sericitic alteration), pale green fine grained to aphaneritic from 24.0' to 63.9'; overall 1% to 2% pyrite very fine grained to fine grained with local sections up to 3% to 5%							
		- 4.5' to 5.6' - quartz vein with pink granitic inclusions							
		- 7.0' to 8.6' - quartz vein with brownish to rusty brown staining on fractures CA = irregular and 50° at 8.6'							
		- 20.5' to 21.0' - quartz vein breccia with granite fragments angular							
		- 21.0' - crumbly core, possible shearing							
		- 21.4' to 22.3' - greyish quartz vein with pink granite inclusions							
		- 22.4' to 23.0' - quartz vein breccia with pink granite inclusions							
		- 24.6' to 25.1' - quartz vein							
		- 26.2' to 27.8' - quartz vein with numerous granitic inclusions							
		- 37.9' to 39.3' - quartz vein minor inclusions granitic							

LOCATION ROSEVAL

HOLE NO. RS-89-07

N. \_\_\_\_\_ FOOTAGE/ANG. \_\_\_\_\_

SHEET 2 OF 8

E. \_\_\_\_\_  
 ELEV. \_\_\_\_\_  
 AZ. \_\_\_\_\_

DIP \_\_\_\_\_  
 DIP \_\_\_\_\_  
 DIP \_\_\_\_\_

E.H. van Hees

Geological Services Inc.

LOGGED BY: KIAN JENSEN  
 DATE \_\_\_\_\_

FROM	TO	DESCRIPTION	FROM	TO	SAMPLE NO.	LENGTH	Au O.P.T.		
		-41.3' to 42.6' - quartz vein with minor inclusions	48.0	53.0	14435				
		-63.9' - CONTACT irregular CA ~ 72°	53.0	58.0	14436				
			58.0	63.9	14437				
63.9	68.0	QUARTZ VEIN	63.9	68.0	14378				
		-white with about 5% chloritic metavolcanic inclusions							
		-68.0' - contact irregular							
68.0	82.5	CHLORITIC SCHIST							
		- fine grained, black to black green, schistose to contorted							
		schistosity, wispy carbonate parallel to schistosity, trace pyrite							
		-68.0' to 71.7' - carbonated, contorted schistosity							
		-69.3' to 71.2' - numerous 1" to 2" quartz and/or quartz							
		carbonate contorted stringers							
		-71.7' to 82.5' - black green, chloritic schist with contorted							
		to wrinkled schistosity, locally uncontorted.							
		-81.5' schistosity CA = 50°							

LOCATION ROSEVAL

HOLE NO. RS-89-07

N. \_\_\_\_\_ FOOTAGE/ANG. \_\_\_\_\_

SHEET 3 OF 8

E. \_\_\_\_\_  
 ELEV. \_\_\_\_\_  
 AZ. \_\_\_\_\_

DIP \_\_\_\_\_  
 DIP \_\_\_\_\_  
 DIP \_\_\_\_\_

E.H. van Hees

Geological Services Inc.

LOGGED BY: KIAN JENSEN  
 DATE \_\_\_\_\_

FROM	TO	DESCRIPTION	FROM	TO	SAMPLE NO.	LENGTH	Au O.P.T.		
82.5	117.0	QUARTZ VEIN	82.5	86.5	14379				
		- whitish to greyish quartz vein with chloritic schist metavolcanic inclusions, generally barren of sulphides	86.5	90.5	14380				
		- 82.5' to 90.5' - 2% to 3% chloritic schist inclusions about 1/4" in vein	95.5	100.5	14381				
		- 90.5' contact CA = 80° to 85°	102.3	106.9	14382				
		- 90.5' to 95.5' - carbonated chloritic schist	108.0	113.3	14383				
		- 95.5' - contact irregular CA ~ 80°	114.5	117.0	14384				
		- 95.5' to 100.5' - Quartz vein with 2% to 3% chloritic schist inclusions							
		- 98.8' to 99.2' - chloritic volcanic inclusion							
		- 100.5' to 102.3' - contorted chloritic schist, both contacts irregular							
		- 102.3' to 106.9' - greyish quartz vein with 5% chloritic schist inclusions							
		- 104.5' to 106.15' - pinkish granitic inclusions with chlorite about 30% to 35% of core							
		- 106.9' - contact irregular							
		- 106.9' to 108.0' - chloritic schist with 1% to 2% 1mm euhedral pyrite							

LOCATION ROSE VAL

HOLE NO. RS-89-07

N. \_\_\_\_\_ FOOTAGE/ANG. \_\_\_\_\_

SHEET 4 OF 8

E. \_\_\_\_\_ DIP \_\_\_\_\_

E.H. van Hees

LOGGED BY: KIAN JENSEN

ELEV. \_\_\_\_\_ DIP \_\_\_\_\_

Geological Services Inc.

DATE \_\_\_\_\_

AZ. \_\_\_\_\_ DIP \_\_\_\_\_

FROM	TO	DESCRIPTION	FROM	TO	SAMPLE NO.	LENGTH	Au O.P.T.		
		-108.0' to 113.3' - quartz vein with chloritic inclusion at 109.0' to 109.5'							
		-113.3' to 114.5' - chloritic schist with irregular 1" quartz stringer and 1% fine grained pyrite (50% quartz / 50% volcanics)							
		-114.5' to 117.0' - quartz vein							
		-117.0' - contact CA=40°							
117.0	152.1	CHLORITIC SCHIST							
		- fine grained, greyish black green to black green, carbonated, contorted and wrinkled schistosity, overall scattered to <1% fine grained pyrite locally 1/8" blebs and up to 1% to 2% fine grained pyrite.							
		- <1% quartz veinlets and stringers from 3/4" to 3" wide, some wrinkled, CA range from 25° to 80°							
152.1	194.8	QUARTZ VEIN							
		-milky white with chloritic schist inclusions to greyish green to greyish black green meta-volcanic inclusions, barren of sulphides							

LOCATION ROSEVAL

HOLE NO. RS-89-07

N. \_\_\_\_\_ FOOTAGE/ANG. \_\_\_\_\_

SHEET 5 OF 8

E. \_\_\_\_\_  
 ELEV. \_\_\_\_\_  
 AZ. \_\_\_\_\_

DIP \_\_\_\_\_  
 DIP \_\_\_\_\_  
 DIP \_\_\_\_\_

E.H. van Hees

Geological Services Inc.

LOGGED BY: KIAN JENSEN

DATE \_\_\_\_\_

FROM	TO	DESCRIPTION	FROM	TO	SAMPLE NO.	LENGTH	Au O.P.T.
		-152.1' - contact irregular CA = 45° to 50°	152.1	157.0	14385		
		-152.1' to 157.0' - <1% chloritic inclusions at 152.1' to 152.8'	157.0	162.0	14386		
		-157.0' to 162.0' - quartz vein with chloritic schist and carbonated inclusions at 159.8' to 160.3'	162.0	167.7	14387		
			169.0	171.4	14388		
		-163.0' to 163.1' - chloritic schist band	173.7	178.0	14389		
		-167.6' to 168.9' - carbonated chloritic schist, both contacts CA = 40°	178.0	183.0	14390		
		-169.1' - 1/2" chloritic volcanic inclusion	183.0	188.0	14391		
		-170.8' to 171.1' - chloritic volcanic inclusion	188.0	191.8	14392		
		-171.4' to 173.7' - carbonated chloritic tuffaceous metavolcanic inclusion	191.8	194.8	14393		
		-173.7' - quartz vein contact CA = 45°					
		-173.7' to 187.6' - Quartz vein - milky white, no inclusions					
		-187.6' to 187.7' - chloritic inclusion					
		-188.0' to 191.8' - quartz vein with inclusions ~20% of core					
		-190.3' to 191.2' and 191.6' to 191.8' volcanic inclusions					
		-191.8' to 194.8' - quartz vein with 25% to 30% inclusions					
		-194.8' - contact CA ~ 25°					

LOCATION ROSEVAL

HOLE NO. RS-89-07

N. \_\_\_\_\_ FOOTAGE/ANG. \_\_\_\_\_

SHEET 6 OF 8

E. \_\_\_\_\_ DIP \_\_\_\_\_

E.H. van Hees

LOGGED BY: KIAN JENSEN

ELEV. \_\_\_\_\_ DIP \_\_\_\_\_

Geological Services Inc.

DATE \_\_\_\_\_

AZ. \_\_\_\_\_ DIP \_\_\_\_\_

FROM	TO	DESCRIPTION	FROM	TO	SAMPLE NO.	LENGTH	Au O.P.T.
194.8	198.9	MASSIVE MAFIC METAVOLCANICS					
		- fine grained, massive, greyish green to greyish black green, slightly carbonated, poorly developed schistosity, trace sulphides					
198.9	206.7	QUARTZ VEIN	199.0	202.3	14394		
		- white with mafic volcanic inclusions	202.3	206.7	14395		
		- 198.9' - contact irregular CA = 20°					
		- 198.9' to 200.1' - about 40% mafic volcanic inclusions					
		- 201.8' to 202.3' - mafic volcanic inclusion					
		- 204.1' to 204.3' - mafic volcanic inclusion					
		- 205.5' to 206.7' - low angle mafic volcanic inclusion with about 20% chloritic inclusions					
		- 206.7' - contact CA = 25°					
206.7	212.3	MASSIVE MAFIC METAVOLCANICS					
		- as above, 3% of total 1" quartz stringers, trace pyrite					

LOCATION ROSEVAL

N. \_\_\_\_\_ FOOTAGE/ANG. \_\_\_\_\_  
 E. \_\_\_\_\_ DIP \_\_\_\_\_  
 ELEV. \_\_\_\_\_ DIP \_\_\_\_\_  
 AZ. \_\_\_\_\_ DIP \_\_\_\_\_

E.H. van Hees  
 Geological Services Inc.

HOLE NO. RS-89-07

SHEET 7 OF 8

LOGGED BY: KIAN JENSEN  
 DATE \_\_\_\_\_

FROM	TO	DESCRIPTION	FROM	TO	SAMPLE NO.	LENGTH	Au O.P.T.
212.3	222.7	QUARTZ VEIN	212.3	218.5	14396		
		- milky white	220.2	222.7	14397		
		- 215.6' to 216.8' - sample to G.L.					
		- 218.5' to 220.2' - mafic metavolcanic tuff inclusion					
		- 222.7' - contact CA = 85°					
222.7	249.0	MAFIC METAVOLCANIC					
		- as above, possibly tuff to fine lapilli tuffaceous fragmental, gradual increase in chlorite content with depth, trace pyrite,					
		- 223.4' to 224.1' - quartz carbonate veinlet with pinkish tint					
		- 224.5' - 1/8" euhedral pyrite					
		- 228.2' to 229.1' - quartz veinlet, CA = 47° at 229.1'					
		- 229.0' to 233.0' - gradual increase in chlorite					
		- 234.8' to 235.2' - quartz veinlet CA ~ 80°					
		- 247.8' to 248.5' - quartz carbonate veinlet CA ~ 75°					
		- 249.0' - broken core, extreme increase in chlorite					

LOCATION ROSEVAL

HOLE NO. RS-89-07

N. \_\_\_\_\_ FOOTAGE/ANG. \_\_\_\_\_

SHEET 8 OF 8

E. \_\_\_\_\_ DIP \_\_\_\_\_

E.H. van Hees

LOGGED BY: KIAN JENSEN

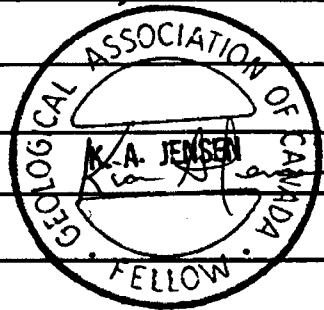
ELEV. \_\_\_\_\_ DIP \_\_\_\_\_

Geological Services Inc.

DATE \_\_\_\_\_

AZ. \_\_\_\_\_ DIP \_\_\_\_\_

FROM	TO	DESCRIPTION	FROM	TO	SAMPLE NO.	LENGTH	Au O.P.T.
249.0	288.0	TALCOSE CHLORITIC SCHIST					
		- fine grained, talcose, black green, wispy carbonate parallel to straight and contorted schistosity, very soft, locally crumbly possibly representing fault zone					
		- 258.4' to 258.8' - mud seam					
		- 258.8' to 267.2' - LOST CORE					
		- 267.2' to 271.3' - mud seam and broken crumbly core					
		- 274.0' to 275.5' - LOST CORE					
		- 275.5' to 276.0' - mud seam					
		- 276.4' to 276.9' - low angle, fine grained, blood purple felsic intrusive and at 277.8'					
		- 279.5' to 280.0' - blood purple felsic intrusive, contacts ground					
288.0		END OF HOLE					





LOCATION ROSEVAL

HOLE NO. RS-89-08

N. \_\_\_\_\_ FOOTAGE/ANG. \_\_\_\_\_

SHEET 1 OF 8

E. \_\_\_\_\_ DIP -45° @ SURFACE

E.H. van Hees

LOGGED BY: KIAN JENSEN

ELEV. \_\_\_\_\_ DIP -39.0° @ 238'

Geological Services Inc.

DATE

Oct 2 / 89

AZ. 135°

DIP \_\_\_\_\_

CORE SIZE BQ

ONTARIO GEOLOGICAL SURVEY  
ASSESSMENT FILES  
OFFICE  
JAN 15 1990 FROM TO  
RECEIVED

FROM	TO	DESCRIPTION	FROM	TO	SAMPLE NO.	LENGTH	Au O.P.T.
0.0	11.0	CASING					
11.0	38.8	SILICIFIED GRANITE OR VOLCANICS					
		- fine grained, pale greenish buff pink to buff pink, minor sections of sericitic alteration, 2% to 3% fine grained pyrite occasional quartz stringer and veinlets about 10% of total unit					
		- 26.3' to 27.5' - about 50% quartz stringers and veinlets					
		- 28.3' to 29.95' - quartz vein with buff green inclusions 30%					
		- 31.5' - 1 1/2" quartz stringer CA=20°					
		- 34.0' to 34.7' - fine grained to aphaneritic, pinkish					
		- 34.7' to 35.3' - rusty yellow, crumbly core					
		- 36.0' to 38.8' - fine grained, pinkish	36.0	38.0	14438		
		- 37.1' to 37.5' - irregular quartz stringer with chlorite, 1% to 2% fine grained pyrite, ~1% chalcopyrite.					
		- 37.5' to 38.0' - chlorite seams with <1% pyrite					

LOCATION ROSEVAL

HOLE NO. RS-89-08

N. \_\_\_\_\_ FOOTAGE/ANG. \_\_\_\_\_

SHEET 2 OF 8

E. \_\_\_\_\_ DIP \_\_\_\_\_

E.H. van Hees

LOGGED BY: KIAN JENSEN

ELEV. \_\_\_\_\_ DIP \_\_\_\_\_

Geological Services Inc.

DATE \_\_\_\_\_

AZ. \_\_\_\_\_ DIP \_\_\_\_\_

FROM	TO	DESCRIPTION	FROM	TO	SAMPLE NO.	LENGTH	Au O.P.T.
38.8	62.3	MAFIC TUFFACEOUS METAVOLCANICS - fine grained, chloritic black green to carbonated medium brown. - massive, uniform, occasional fine lapilli size fragments, trace to scattered fine grained pyrite, poorly developed schistosity - 38.8' to 42.0' - blackish green - 48.4' to 52.0' - blackish green to dark grey - 56.3' to 62.2' - blackish green to blackish grey - 47.0' - schistosity CA=67°					
62.3	67.5	QUARTZ VEIN - milky white, barren of sulphides - 62.3' - contact CA=50° - 63.2' to 63.5' - mafic metavolcanic inclusion - 67.5' - contact CA=36°	62.3	67.5	14398		
67.1	69.1	MAFIC METAVOLCANICS - fine grained, contorted schistosity, medium brown to pale green					

LOCATION ROSEVAL

HOLE NO. RS-89-08

N. \_\_\_\_\_ FOOTAGE/ANG. \_\_\_\_\_

SHEET 3 OF 8

E. \_\_\_\_\_ DIP \_\_\_\_\_

E.H. van Hees

LOGGED BY: KIAN JENSEN

ELEV. \_\_\_\_\_ DIP \_\_\_\_\_

Geological Services Inc.

DATE \_\_\_\_\_

AZ. \_\_\_\_\_ DIP \_\_\_\_\_

FROM	TO	DESCRIPTION	FROM	TO	SAMPLE NO.	LENGTH	Au O.P.T.
		with minor sericitic alteration, trace sulphides					
69.1	70.1	QUARTZ VEIN - greyish white, barren of sulphides and inclusions - 69.1' - contact CA = 70° - 70.1' - contact CA = 25°					
70.1	70.2	MAFIC METAVOLCANICS - fine grained, dark green, contorted schistosity					
70.2	72.9	DIABASE DIKE - aphaneritic, black, trace very fine sulphides, magnetic - contacts CA = 40° at 70.2', CA = broken at 72.9'					
72.9	73.3	MAFIC METAVOLCANICS - as above, contorted					

LOCATION ROSEVAL

HOLE NO. RS-89-08

N. \_\_\_\_\_ FOOTAGE/ANG. \_\_\_\_\_

SHEET 4 OF 8

E. \_\_\_\_\_ DIP \_\_\_\_\_

E.H. van Hees

LOGGED BY: KIAN JENSEN

ELEV. \_\_\_\_\_ DIP \_\_\_\_\_

Geological Services Inc.

DATE \_\_\_\_\_

AZ. \_\_\_\_\_ DIP \_\_\_\_\_

FROM	TO	DESCRIPTION	FROM	TO	SAMPLE NO.	LENGTH	Au O.P.T.		
73.3	92.0	QUARTZ VEIN							
		-73.3' to 78.8' - greyish white to whitish, barren of sulphides							
		-73.3' - contact CA=35° contorted							
		-73.3' to 74.7' - greyish white							
		-75.2' to 75.8' - black green, chloritic schist inclusion							
		-76.25' to 76.9' - chloritic schist inclusion							
		-77.3' to 78.8' - chloritic schist inclusion							
		-78.8' to 92.0' - white, barren	78.8	84.0	14399				
		-78.8' - contact CA=60°	84.0	88.0	14400				
		-83.9' to 84.2' - chloritic metavolcanic inclusion	88.0	92.0	14401				
		-89.5' to 90.2' - chlorite on fractures and small granitic inclusions							
		- total about 70% quartz							
		- 92.0' - contact CA=40°							
92.0	97.1	MAFIC CHLORITIC METAVOLCANIC							
		- fine grained, chloritic massive uniform, 2% to 3% fine grained pyrite							
		occasional pyrite blebs up to 15%							

LOCATION ROSEVAL

HOLE NO. RS-89-08

N. \_\_\_\_\_ FOOTAGE/ANG. \_\_\_\_\_

SHEET 5 OF 8

E. \_\_\_\_\_ DIP: \_\_\_\_\_

E.H. van Hees

LOGGED BY: KIAN JENSEN

ELEV. \_\_\_\_\_ DIP: \_\_\_\_\_

Geological Services Inc.

DATE: \_\_\_\_\_

AZ. \_\_\_\_\_ DIP: \_\_\_\_\_

FROM	TO	DESCRIPTION	FROM	TO	SAMPLE NO.	LENGTH	Au O.P.T.
		-93.0' - schistosity CA = 58°					
97.1	103.7	QUARTZ VEIN					
		- whitish, barren of sulphides					
		- 97.1' to 99.0' - veining with granitic inclusions at 97.6' to 97.7'					
		- 99.0' to 100.5' - granitic intrusive or fragment CA ~ 60°					
		- 100.5' to 101.5' - chloritic, contorted metavolcanics					
		- 101.5' - contact CA = 64° to 65°					
		- 101.5' to 103.7' - veining, white					
		- 103.7' - contact CA = 45°					
103.7	168.6	MAFIC METAVOLCANIC					
		- fine grained massive chloritic, medium to dark green					
		- scattered pyrite < 1%, locally 1% to 2% 1/8" euhedral pyrite					
		- 104.5' - schistosity CA = 70°					
		- 107.0' to 108.0' - quartz veinlet with pinkish staining, 2% patchy					
		bleb pyrite, contacts CA = 40° irregular and 50°, possible graphitic					

LOCATION ROSEVAL

HOLE NO. RS-89-08

N. \_\_\_\_\_ FOOTAGE/ANG. \_\_\_\_\_

SHEET 6 OF 8

E. \_\_\_\_\_ DIP \_\_\_\_\_  
 ELEV. \_\_\_\_\_ DIP \_\_\_\_\_  
 AZ. \_\_\_\_\_ DIP \_\_\_\_\_

E.H. van Hees  
Geological Services Inc.

LOGGED BY: KIAN JENSEN  
 DATE \_\_\_\_\_

FROM	TO	DESCRIPTION	FROM	TO	SAMPLE NO.	LENGTH	Au O.P.T.
		-116.0' - schistosity CA=40°					
		-117.5' to 119.35' - quartz vein, white					
		-117.5' - contact CA=57°					
		-118.6' to 118.8' - mafic metavolcanic inclusion					
		-119.35' - contact CA=33°					
		-120.6' to 122.6' - white quartz vein, barren					
		-120.6' - contact CA=50°					
		-122.6' - contact CA=60°					
		-123.8' - pyrite bleb					
		-123.0' to 138.0' - contorted, carbonated,					
		-125.7' to 126.85' - white quartz vein, contacts CA=60°+50°					
		-136.6' to 138.0' - white quartz vein, contacts irregular CA=70°+85°					
		-145.5' to 147.3' - white quartz vein, barren					
		-146.3' to 147.3' - sample to G.L.					
		-153.6' to 154.6' - pinkish white quartz vein, contacts CA=irregular + 60°					
		-154.6' to 156.0' - white quartz vein, contact CA=55° at 156.0'					
		-156.15' to 156.45' - whitish quartz veinlet, contacts CA=80°+40°					

LOCATION ROSEVAL

HOLE NO. RS-89-08

N. \_\_\_\_\_ FOOTAGE/ANG. \_\_\_\_\_

SHEET 7 OF 8

E. \_\_\_\_\_  
 ELEV. \_\_\_\_\_  
 AZ. \_\_\_\_\_

DIP \_\_\_\_\_  
 DIP \_\_\_\_\_  
 DIP \_\_\_\_\_

E.H. van Hees  
Geological Services Inc.

LOGGED BY: KIAN JENSEN  
 DATE \_\_\_\_\_

FROM	TO	DESCRIPTION	FROM	TO	SAMPLE NO.	LENGTH	Au O.P.T.
		-157.55' to 158.4' - quartz vein contacts CA = 40° and 65°, whitish					
168.6	202.7	QUARTZ VEIN	170.0	175.6	14402		
		-milky white, barren of sulphides	175.6	178.6	14403		
		-168.6' to 170.0' - irregular quartz stringers and veinlets with 50%	178.6	184.5	14404		
		to 55% mafic metavolcanic inclusions	184.5	189.0	14405		
		- quartz vein with mafic metavolcanic inclusions as follows	189.0	194.0	14406		
		- 170.0' to 175.6' - 35% with chlorite	194.0	198.0	14407		
		- 175.6' to 178.6' - 2%	198.0	202.7	14408		
		- 178.6' to 184.5' - 50% to 60%					
		- 184.5' to 189.0' - 5% to 10%					
		- 189.0' to 194.0' - 3% to 5%					
		- 194.0' to 198.0' - 2% to 3%, chrome mica patch at 196.5'					
		- 198.0' to 202.7' - 3%					
202.7	208.2	MAFIC METAVOLCANICS, as above					
		- 203.5' - schistosity CA = 70°					

LOCATION ROSEVAL

HOLE NO. RS-89-08

N. \_\_\_\_\_ FOOTAGE/ANG. \_\_\_\_\_

SHEET 8 OF 8

E. \_\_\_\_\_ DIP \_\_\_\_\_

E.H. van Hees

LOGGED BY: KIRN JENSEN

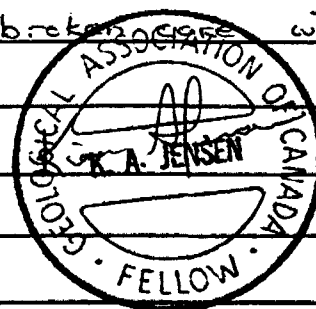
ELEV. \_\_\_\_\_ DIP \_\_\_\_\_

Geological Services Inc.

DATE \_\_\_\_\_

AZ. \_\_\_\_\_ DIP \_\_\_\_\_

FROM	TO	DESCRIPTION	FROM	TO	SAMPLE NO.	LENGTH	Au O.P.T.
		-204.65' to 204.8' - quartz veinlet, CA=55°					
		-205.15' to 205.8' - quartz veinlet, glassy white,					
208.2	214.4	QUARTZ VEIN	208.2	214.4	14409		
		- glassy, white, barren of sulphides					
		- 208.2' - contact CA=50°					
		- 208.7' to 208.8' - chloritic metavolcanic inclusion					
		- 210.8' to 211.9' - metavolcanic inclusion, contacts both CA=75°					
		- 214.4' - contact CA=56°					
214.4	238.0	MAFIC METAVOLCANICS					
		- fine grained, chloritic, black green, as above, brecciated with occasional quartz stringers					
238.0		END OF HOLE.					





2.

DOCUMENT No.  
W 9006-020

Instructions  
- Please type or print.  
- For each type of work performed, a separate Report of Work should be completed.

SEE ATTACHMENT.



42B01SE0013 24 PENHORWOOD

Mining Act

Report of Work

900

Name and Address of Recorded Holder:  
**Roseval Silica Inc**  
 150 de Brullon Boucherville Quebec J4B 2J2  
 Telephone No. **T-4950**  
**1-514-655-0157**

Summary of Distribution of Credits and Work Performance

Mining Division	Mining Claim			Work Days Cr.	Mining Claim			Work Days Cr.	Mining Claim			Work Days Cr.
	Prefix	Number	Work Days Cr.		Prefix	Number	Work Days Cr.		Prefix	Number	Work Days Cr.	
<b>PORCOPINE</b>												
Township or Area <b>PENHORWOOD TWP</b>	P	994486	16		P	994634	16		P	994644	16	
Total Assessment Credits Claimed <b>814 DAYS</b>	P	994625	16		P	994635	16		P	994645	16	
Type of Work Performed (Check one only)  <input type="checkbox"/> Manual Work <input type="checkbox"/> Shaft Sinking Drifting or other Lateral Work <input type="checkbox"/> Mechanical equipment <input type="checkbox"/> Power Stripping other than Manual (maximum credit allowed - 100 days per claim) <input checked="" type="checkbox"/> Diamond or other Core drilling <input type="checkbox"/> Core Specimens	P	994626	16		P	994636	16		P	994646	17	
	P	994627	16		P	994637	16		P	994647	16	
	P	994628	16		P	994638	16		P	994648	16	
	P	994629	16		P	994639	16		P	994649	16	
	P	994630	16		P	994640	16		P	994650	16	
	P	994631	16		P	994641	16		P	994651	16	
	P	994632	16		P	994642	16		P	994652	16	
	P	994633	16		P	994643	16		P	994653	16	

Dates when work was performed  
 From: **SEPT. 5 /89** To: **SEPT. 12 /89**  
 Total No. of Days Performed: **814**  
 Total No. of Days Claimed: **814**  
 Total No. of Days to be Claimed at a Future Date: **0**

All the work was performed on Mining Claim(s): Indicate no. of days performed on each claim. * (See note No. 1 on reverse side)		Mining Claim	No. of Days	Mining Claim	No. of Days	Mining Claim	No. of Days	Mining Claim	No. of Days
		<b>P994260</b>	<b>814</b>						
Mining Claim	No. of Days	Mining Claim	No. of Days	Mining Claim	No. of Days	Mining Claim	No. of Days	Mining Claim	No. of Days

Required Information eg. type of equipment, Names, Addresses, etc. (See Table on reverse side)  
 If space below is insufficient, attach schedules with required information and location sketches

DRILL CONTRACTOR DATES OF DRILLING

Ed Colbert Diamond Drilling  
 Exploration Ltd.  
 167 Lakeshore  
 Timmins Ontario

Sept. 5 - Sept. 12  
 1989

ONTARIO GEOLOGICAL SURVEY  
 ASSESSMENT FILES  
 OFFICE

JAN 15 1990

RECEIVED

RECORDED

DEC 18 1989

Certification of Beneficial Interest \* (See Note No. 2 on reverse side)

I hereby certify that, at the time the work was performed, the claims covered in this report or witnessed same during and/or after its completion and the annexed report is true.

Date: **OCT. 17, 1989** Recorded/Holder or Agent (Signature): *Robert G. Komarechka*

Certification Verifying Report of Work

I hereby certify that I have a personal and intimate knowledge of the facts set forth in the Report of Work annexed hereto, having performed the work or witnessed same during and/or after its completion and the annexed report is true.

Name and Address of Person Certifying:  
**Robert Gerald Komarechka**  
**Apt #1 396 EVA AVE, SODBURY, ONTARIO**  
**P3C 4N3**

Telephone No.: **(705) 673-0873** Date: **OCT. 17, 1989** Certified By (Signature): *Robert G. Komarechka*

For Office Use Only

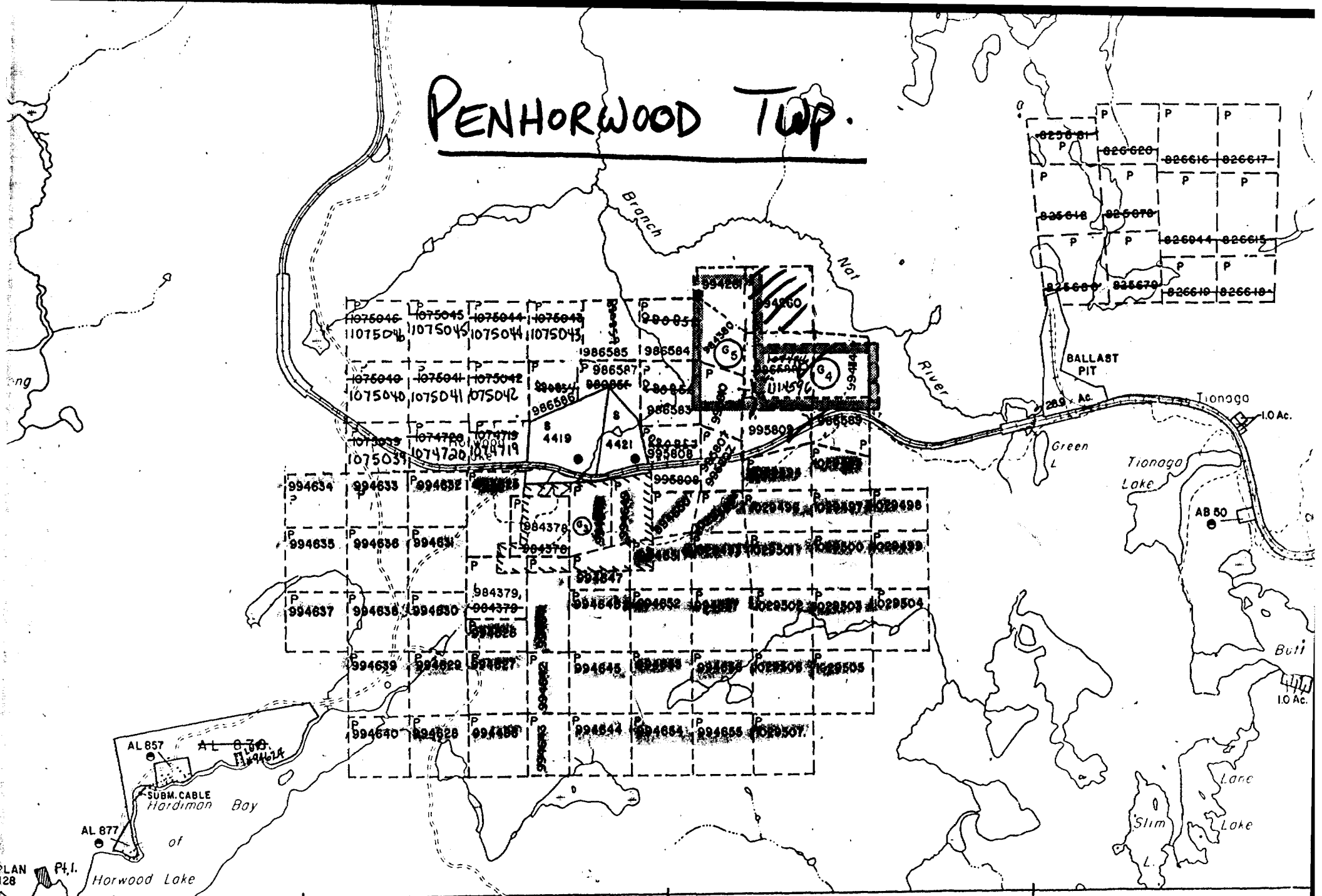
Work Assignments	Received Stamp 
------------------	--------------------

ATTACHED SHEET OF REMAINING ALLOCATION OF  
814 MAN DAYS OF DIAMOND DRILLING ON CLAIM #P994260

PREFX	MINING CLAIM NUMBER	WORK DAYS CREDIT
P	994654	16
P	994655	16
P	994656	16
P	994657	16
P	1029492	16
P	1029493	16
P	1029494	16
P	1029495	17
P	1029496	17
P	1029497	17
P	1029498	17
P	1029499	17
P	1029500	17
P	1029501	17
P	1029502	17
P	1029503	17
P	1029504	17
P	1029505	17
P	1029506	17
P	1029507	17

*Robert G. Komarechka*

# PENHORWOOD TWP.



# HARDIMAN TWP.

ROSEVILLE DRAINAGE INC.	
TOWN	SUNNYVALE
PROJECT	SEWERAGE SYSTEM IMPROVEMENT
DATE	10/10/00
BY	DR. J. M. ...
SCALE	AS SHOWN

