



42B01SE0016 26 PENHORWOOD

010

DIAMOND DRILLING

TOWNSHIP: PENHORWOOD TWP.

REPORT NO: 26

WORK PERFORMED FOR: La société de Gestion Maskous Inc.

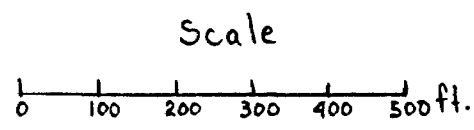
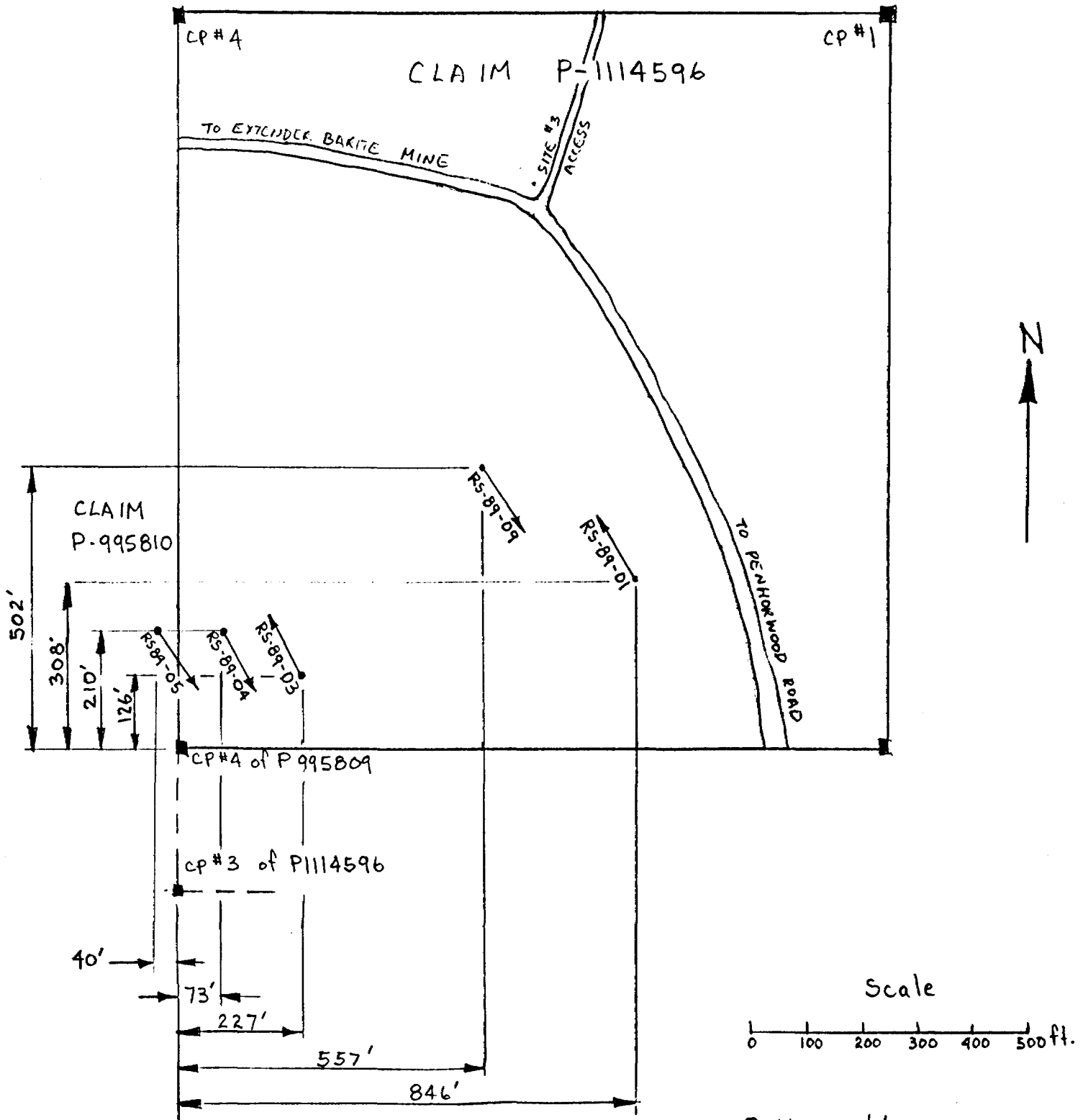
RECORDED HOLDER: SAME AS ABOVE (xx)

: OTHER ()

<u>CLAIM NO.</u>	<u>HOLE NO.</u>	<u>FOOTAGE</u>	<u>DATE</u>	<u>NOTE</u>
P 114596	RS-89-04	200'	Sept/89	(1)
	RS-89-05	198'	Sept/89	(1)
	RS-89-09	208'	Sept/89	(1)

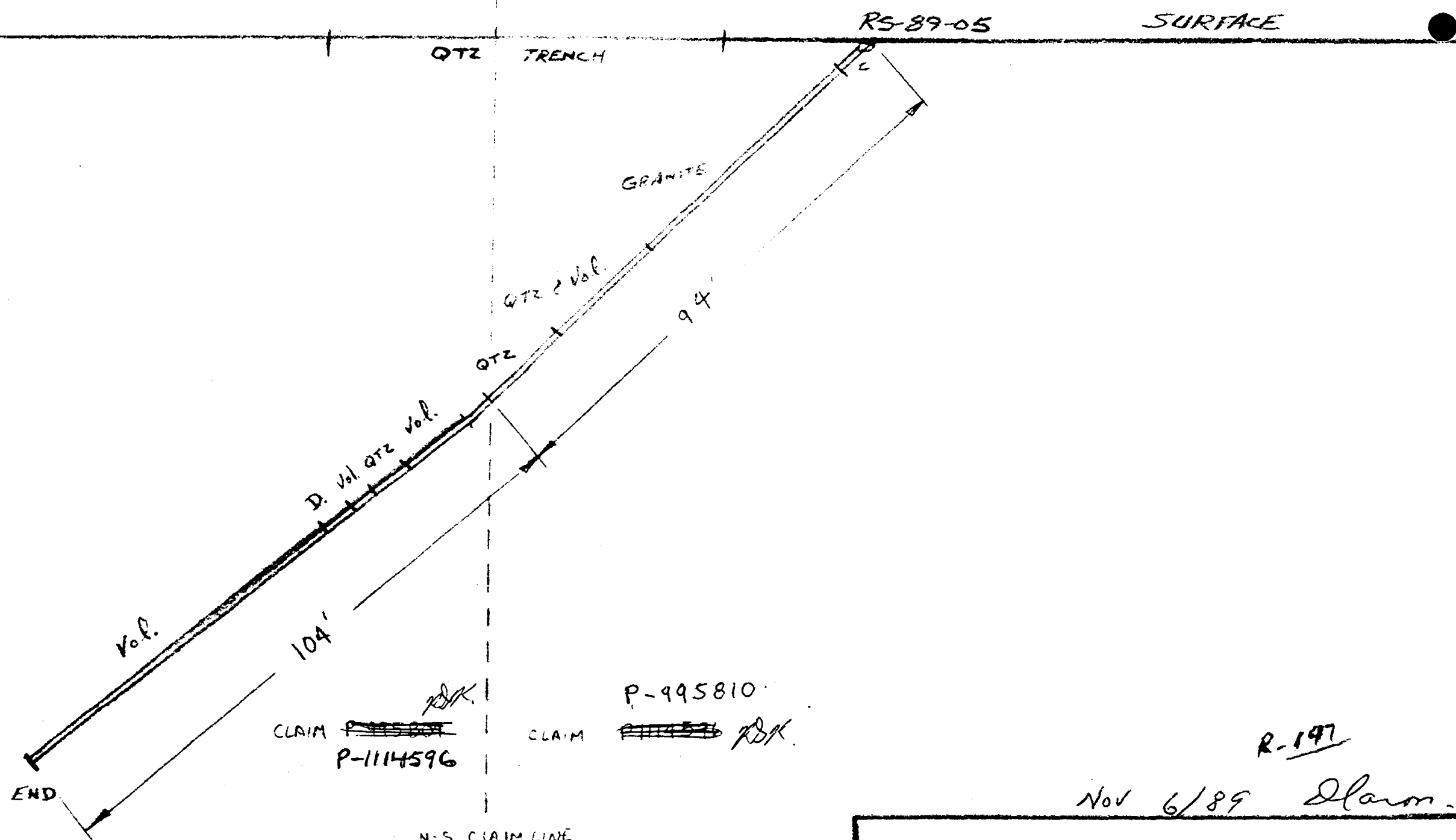
NOTES: (1) # W9006.001, filed Feb/90

INDEX MAP - SITE #2



B. Komarechka

NOV 11 1989



N-S CLAIM LINE
 BETWEEN SOUTH BOUNDARY OF P114596
 AND NORTH BOUNDARY OF P995809

Nov 6/89 *slaron.*

ROSEVAL SILICA INC.	
TIONAGA SITE No 2a	
HOLE # RS89-5	
	SCALE 1:250
	DATE 18/10/89
Drawn By D. CARON	

LOCATION ROSEVAL

HOLE NO. RS-89-04

N. _____ FOOTAGE/ANG. _____

SHEET 1 OF 4

E. _____ DIP -50° @ collar

E.H. van Hees

LOGGED BY: KIAN JENSEN

ELEV. _____ DIP -43.0° @ 200'

Geological Services Inc.

DATE Oct 2/89

AZ. 153° CORE SIZE BQ

FROM	TO	DESCRIPTION	FROM	TO	SAMPLE NO.	LENGTH	Au O.P.T.
0.0	19.0	CASING					
	5.8						
19.0	32.0	GRANITE					
	9.7	-fine grained, mottled pinkish pale brown, overall 1% to 2% fine grained pyrite with odd patches or blebs					
		-26.0' to 27.0' - milky white quartz vein with pinkish granitic inclusions					
		-contacts CA = 40°					
32.0	52.5	SILICIFIED GRANITE OR METAVOLCANICS					
	16.0	-fine grained, buff pink to greyish green buff, sections aphaneritic massive uniform, scattered to 1% to 2% very fine pyrite					
		-possible silicified massive altered tuff					
		-scattered quartz stringers and veinlets <5% of core					
52.5	53.0	MAFIC METAVOLCANIC					
		-fine grained, chloritic, blackish to black green, contorted schistosity,					

ONTARIO GEOLOGICAL SURVEY
 ASSESSMENT FILES
 OFFICE

 JAN 11 1990

 RECEIVED

LOCATION ROSEVAL

HOLE NO. RS-89-04

N. _____ FOOTAGE/ANG. _____

SHEET 2 OF 4

E. _____ DIP _____

E.H. van Hees

LOGGED BY: KIAN JENSEN

ELEV. _____ DIP _____

Geological Services Inc.

DATE _____

AZ. _____ DIP _____

FROM	TO	DESCRIPTION	FROM	TO	SAMPLE NO.	LENGTH	Au O.P.T.
53.0	57.4	QUARTZ VEIN	53.0	57.4	14410		
16.1		- milky white, <1% chloritic metavolcanic inclusions					
		- contact at 53' CA=60°					
57.4	62.0	QUARTZ VEIN	57.4	62.0	14411		
18.9		- whitish to pinkish brown white with chloritic metavolcanic inclusions					
		and chlorite about 30% of core,					
		- 62.0' - contact CA=50°					
62.0	70.0	MAFIC METAVOLCANICS	62.0	68.0	14412		
21.3		- fine grained, chloritic, massive, uniform, contorted schistosity					
		- 2% to 3% 1/8" euhedral pyrite locally up to 10% 3/16" euhedral pyrite					
		- 68.0' to 69.0' - quartz vein with chloritic inclusions, CA=61° contacts					
70.0	103.6	QUARTZ VEIN	70.0	75.0	14413		
21.3	31.5	- milky white, barren of sulphides	75.0	80.0	14414		
		- 70.0' to 71.0' - quartz vein with 20% chlorite inclusions	80.0	85.0	14415		

LOCATION ROSEVAL

HOLE NO. RS-89-04

N. _____ FOOTAGE/ANG. _____

SHEET 3 OF 4

E. _____ DIP _____

E.H. van Hees

LOGGED BY: KIAN JENSEN

ELEV. _____ DIP _____

Geological Services Inc.

DATE _____

AZ. _____ DIP _____

FROM	TO	DESCRIPTION	FROM	TO	SAMPLE NO.	LENGTH	Au O.P.T.
		-71.0' to 103.6' - occasional wisp of chlorite <0.5% / 5 feet	85.0	88.0	14416		
		- 82.8' - chrome mica patch	88.0	93.0	14417		
			93.0	98.0	14418		
103.6	110.0	QUARTZ VEIN	98.0	103.6	14419		
	33.5	- whitish to greyish white barren	103.6	110.0	14420		
		-103.6' to 104.2' - granitic inclusions					
		- 104.2' to 104.9' - volcanic inclusions					
		- 105.4' to 105.7' - volcanic inclusions					
		- 106.4' to 110.0' - chlorite fracture filling about 40% of core					
110.0		SILICIFIED METAVOLCANIC TUFF					
		- aphaneritic, silicified, hard to brittle, local sections of laminated tuff with massive sections; banding brownish dark grey to blackish dark green, pinkish buff, grey to greyish brown, quartz fracture filling					
		- 110.0' to 110.6' - trace sulphides with local 1% to 2% fine grained pyrite					
		- 110.6' to 112.3' - pink buff					
		- 112.3' to 140.5' - grey to greyish brown, prominent laminated tuff 1/2" to 1"					

LOCATION ROSEVAL

HOLE NO. RS-89-04

N. _____ FOOTAGE/ANG. _____

SHEET 4 OF 4

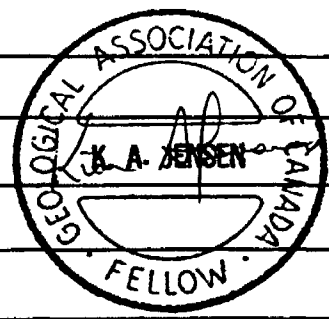
E. _____ DIP _____

E.H. van Hees
Geological Services Inc.

LOGGED BY: KIAN JENSEN
DATE _____

ELEV. _____ DIP _____
AZ. _____ DIP _____

FROM	TO	DESCRIPTION	FROM	TO	SAMPLE NO.	LENGTH	Au O.P.T.
		-138.8' to 140.5' - silicified with 80% with quartz stringers					
		-140.5' to 168.0 - laminated, brownish dark grey and blackish, 1/2" to 1"					
		-146.8' - bedding CA=70°					
		-163.5' - bedding CA=62°					
		-167.7' - bedding CA=60°					
		-168.0' to 200.0' - gradual decrease in silicification, laminated tuff					
		brownish black to black and blackish grey band 1/4" to 1"					
		-187.5' - bedding CA=75°					
200.0		END OF HOLE.					
60.9							



LOCATION ROSEVAL

N. _____ FOOTAGE/ANG. _____

E. _____ DIP 45° @ collar

ELEV. _____ DIP 37.75° @ 198'

AZ. 161° DIP _____

CORE SIZE BQ

E.H. van Hees

Geological Services Inc.

ONTARIO GEOLOGICAL SURVEY
 ASSESSMENT FILES
 OFFICE
 JAN 11 1990
 RECEIVED

HOLE NO. RS-89-05

SHEET 1 OF 5

LOGGED BY: KIAN JENSEN
 DATE: Oct 2/89

FROM	TO	DESCRIPTION	FROM	TO	SAMPLE NO.	LENGTH	Au O.P.T.
0.0	10.0	CASING - bedrock at 6.5 feet					
6.5	53.75	SILICIFIED GRANITE OR METAVOLCANICS					
		- fine grained, salmon pink to greyish pink, massive, trace to scattered very fine grained pyrite,					
		- 9.2' to 9.7' - quartz vein, contacts ground					
		- 12.2' to 13.7' - blackish to greyish black					
		- 18.3' - 1/2" quartz stringer CA=55°					
		- 18.8' - 1" quartz stringer CA=40°					
		- 21.4' to 21.55' - quartz stringer CA=23°, 2% to 3% fine grained euhedral pyrite					
		- 33.0' to 46.0' - pale greenish grey					
		- 46.0' to 53.75' - pinkish buff					
53.75	75.3	QUARTZ VEIN AND CHLORITIC MAFIC METAVOLCANICS					
		- milky white to glass white quartz veining in fine grained, chloritic black green to black, massive to contorted metavolcanics					

LOCATION ROSEVAL

HOLE NO. RS-89-05

N. _____ FOOTAGE/ANG. _____

SHEET 2 OF 5

E. _____ DIP _____

E.H. van Hees

LOGGED BY: KIAN JENSEN

ELEV. _____ DIP _____

Geological Services Inc.

AZ. _____ DIP _____

DATE _____

FROM	TO	DESCRIPTION	FROM	TO	SAMPLE NO.	LENGTH	Au O.P.T.
		-53.75' to 56.3' - 50% veining					
		-55.7' to 56.1' - pinkish buff granitic inclusion					
		-56.3' to 58.2' - glass white quartz vein					
		-58.2' to 63.0' - 50% veining grading to 40% veining					
		-63.0' to 64.3' - mafic metavolcanics, scattered pyrite					
		-64.3' to 65.4' - milky white quartz vein, contact CA = irregular and 60°					
		-69.1' to 69.8' - milky white quartz vein, contacts CA = 70° in opposite directions					
		-70.4' to 71.8' - 60% quartz veining					
		-71.8' to 75.3' - mafic to buff brown metavolcanics with minor quartz stringers					
75.3	94.0	QUARTZ VEIN	75.3	80.0	14421		
		-75.3' to 85.0' - glassy white, brittle, 35% chloritic inclusions 83.0' to	80.0	85.0	14422		
		83.2'	85.0	88.7	14423		
		-85.0' to 86.3' - metavolcanics, black green, inclusion	88.7	94.0	14424		
		-86.3' to 88.7' - milky white with 20% chloritic inclusions					
		-87.9' to 88.0' - granitic inclusions					
		-88.7' to 94.0' - white, 3% fracture filling chlorite, and rusty staining					

LOCATION ROSEVAL

N. _____ FOOTAGE/ANG. _____

E. _____ DIP _____

ELEV. _____ DIP _____

AZ. _____ DIP _____

E.H. van Hees

Geological Services Inc.

HOLE NO. RS-89-05

SHEET 3 OF 5

LOGGED BY: KIRN JENSEN

DATE _____

FROM	TO	DESCRIPTION	FROM	TO	SAMPLE NO.	LENGTH	Au O.P.T.
94.0	112.0	SILICIFIED ALTERED MAFIC METAVOLCANICS					
		- fine grained, dark green to brownish, silicified, massive, local sections of pinkish hard felsic dikelets. 20% to 25% quartz stringers					
		- scattered to trace pyrite					
		- 102.95' - 1/8" seam of euhedral pyrite					
		- 111.0' to 112.0' - increasing to 60% quartz veining greyish.					
112.0	119.4	QUARTZ VEIN	112.0	114.9	14425		
		- 112.0' to 114.9' - whitish with <2% pale green chlorite staining	114.9	119.0	14426		
		- 114.9' to 119.4' - whitish with 40% to 60% chlorite fracture filling/inclusions					
119.4	123.6	ALTERED METAVOLCANICS					
		- fine grained, pale greenish grey to grey, massive, poor to no schistosity, occasional quartz and pinkish calcite stringers					
123.6	129.0	FELSIC DIKE					
		- aphaneritic, salmon pink, hard, minor epidote alteration					

LOCATION ROSEVAL

N. _____ FOOTAGE/ANG. _____
 E. _____ DIP _____
 ELEV. _____ DIP _____
 AZ. _____ DIP _____

E.H. van Hees
 Geological Services Inc.

HOLE NO. RS-89-05
 SHEET 4 OF 5

LOGGED BY: KIAN JENSEN
 DATE _____

FROM	TO	DESCRIPTION	FROM	TO	SAMPLE NO.	LENGTH	Au O.P.T.
		-126.7' to 127.2' - altered metavolcanic inclusion					
		-126.9' - locally 3% fine grained pyrite					
129.0	137.0	SILICIFIED SERICITIC METAVOLCANICS					
		-fine grained, pale green to pale pinkish green, sericitic alteration, massive, poor schistosity, trace sulphides					
		-130.6' to 131.0' - salmon pink felsic dike					
137.0	198.0	WEAKLY ALTERED METAVOLCANICS					
		-fine grained, decreasing alteration and silicification, pale brownish grey to blackish green, trace to scattered sulphides.					
		-138.0' to 138.7' - milky white quartz vein, contacts CA = 50° + 60°					
		-158.9' to 161.5' - pale greenish sericite alteration					
		-161.5' - contact CA = 63°					
		-161.5' to 168.0' - pale grey					
		-166.0' - bedding CA = 65°					

LOCATION ROSEVAL

N. _____ FOOTAGE/ANG. _____

E. _____ DIP 55° @ collar

ELEV. _____ DIP 49.5° @ 208'

AZ. 145° DIP _____

E.H. van Hees

Geological Services Inc.

CORE SIZE BQ

ONTARIO GEOLOGICAL SURVEY
ASSESSMENT FILES
OFFICE
JAN 11 1990
RECEIVED

HOLE NO. RS-89-09

SHEET 1 OF 2

LOGGED BY: KIAN JENSEN

DATE: Oct 2/89

FROM	TO	DESCRIPTION	FROM	TO	SAMPLE NO.	LENGTH	Au O.P.T.
0.0	3.0	CASING					
3.0	208.0	GRANITE					
		- fine grained, buff grey to buff to buff brown with minor pinkish brown to orange brown section, local sections medium grained					
		- 1% to 2% fine grained pyrite					
		- 3.0' to 4.8' - white quartz vein contact CA = 25° at 4.8'					
		- 5.9' to 8.7' - 40% to 45% quartz stringers and veinlets					
		- 8.7' to 11.1' - glassy white to greyish white quartz vein					
		- 11.1' to 11.6' - 5% fine grained pyrite on fractures					
		- 45.5' to 46.9' - pinkish quartz vein with scattered pyrite < 1%					
		- 59.5' to 61.2' - numerous quartz stringers about 25%					
		- 61.2' to 98.0' - medium to coarse grained granite					
		- 89.5' - 1/8" pyrite seam CA = 30°					
		- 98.0' to 103.8' - fine grained buff brown					
		- 103.8' to 107.7' - 1/4" to 1/2" low angle quartz stringer					

LOCATION ROSEVAL

HOLE NO. RS-89-09

N. _____ FOOTAGE/ANG. _____

SHEET 2 OF 2

E. _____ DIP _____

E.H. van Hees

LOGGED BY: KIAN JENSEN

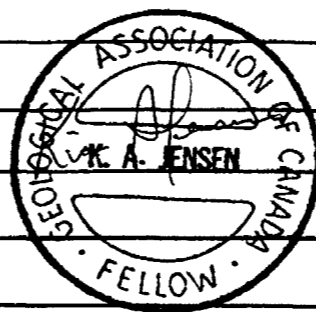
ELEV. _____ DIP _____

Geological Services Inc.

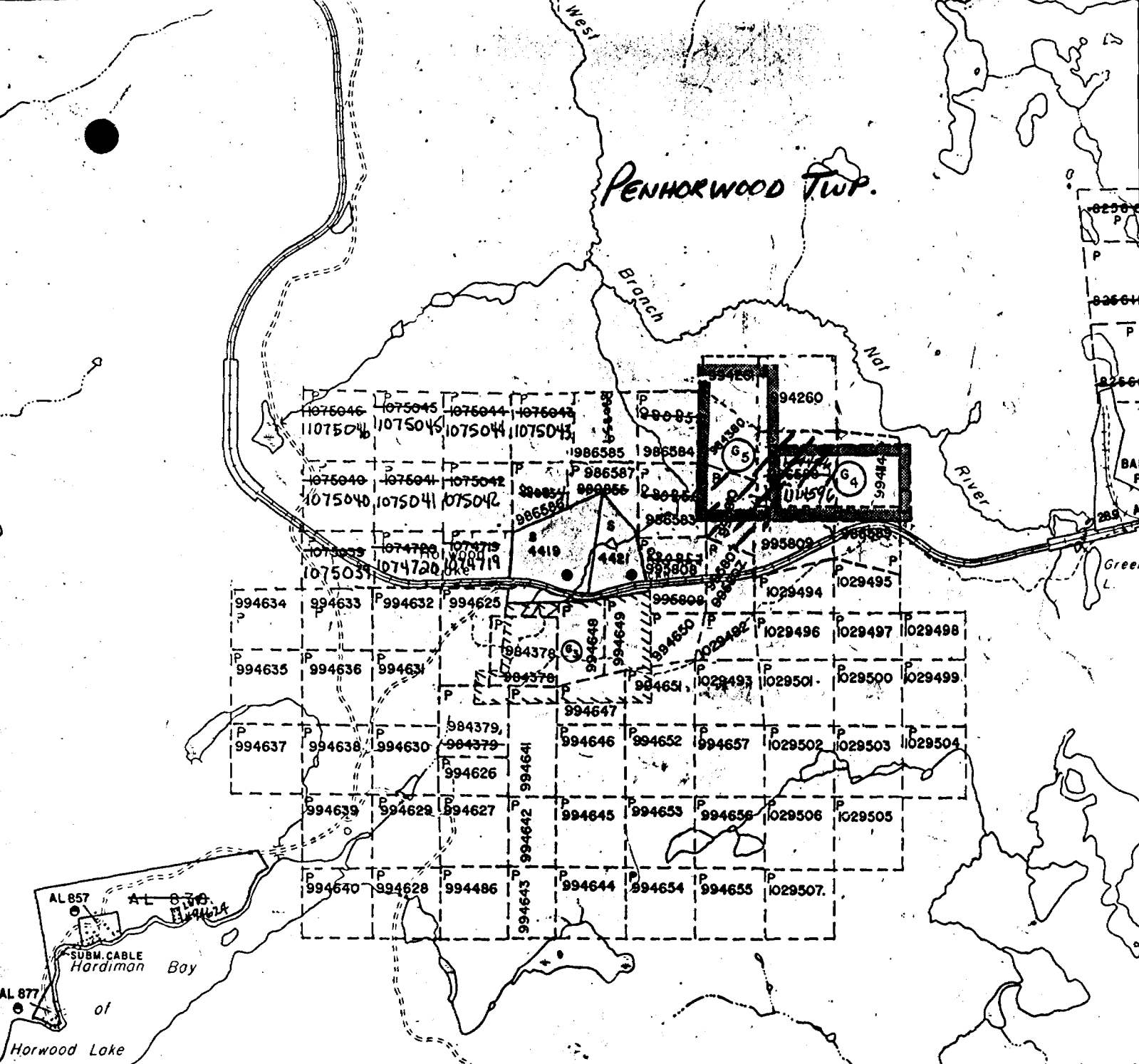
DATE _____

AZ. _____ DIP _____

FROM	TO	DESCRIPTION	FROM	TO	SAMPLE NO.	LENGTH	Au O.P.T.
		-132.0' to 134.6' - mafic chloritic metavolcanic inclusion and quartz stringer, contacts CA = 62° and 40°					
		-134.6' - 5% to 7% pyrite on contact.					
		-157.4' to 158.0' - low angle white quartz veinlet or stringer					
		-158.8' to 159.4' - white quartz carbonate veinlet CA = 25°					
		-159.4' to 160.6' - glassy greyish white low angle quartz stringer					
		-162.4' to 163.4' - glassy greyish white low angle quartz stringer					
		-175.0' to 178.0' - 1/4" to 1/2" low angle white quartz stringer					
		-178.1' to 178.4' - quartz veinlet with granitic inclusions, contacts CA = 50°					
		-188.3' to 188.5' - quartz veinlet CA = 25°					
		-201.2' - 1/2" low angle quartz stringer					
		-206.5' to 208.0' - pale pinkish and minor sericitic alteration					
208.0		END OF HOLE.					



PENHORWOOD TWP.



HARDIMAN TW

DOCUMENT No.
W 9006-001



900

Mining Act Report of Work

Name and Address of Recorded Holder La Societe de Gestion Maskours Inc.	Prospector's Licence No. 7-5171
150 de Brullon Boucherville Quebec J4B 2J2	Telephone No. 1-514-655 0157

Mining Division PORCUPINE	Mining Claim		Work Days Cr.	Mining Claim		Work Days Cr.	Mining Claim		Work Days Cr.
	Prefix	Number		Prefix	Number		Prefix	Number	
Township or Area PENHORWOOD	P	995809	55	P	986586	56			
Total Assessment Credits Claimed 606 DAYS	P	986583	55						
Type of Work Performed (Check one only) <input type="checkbox"/> Manual Work <input type="checkbox"/> Shaft Sinking Drifting or other Lateral Work <input type="checkbox"/> Mechanical equipment <input type="checkbox"/> Power Stripping other than Manual (maximum credit allowed - 100 days per claim) <input checked="" type="checkbox"/> Diamond or other Core drilling <input type="checkbox"/> Core Specimens	P	1114596	55						
	P	995810	55						
	P	995807	55						
	P	995808	55						
	P	986589	55						
	P	986584	55						
	P	986585	55						
	P	986587	55						

Dates when work was performed From: SEPT 1 /89 To: SEPT 15 /89	Total No. of Days Performed 606	Total No. of Days Claimed 606	Total No. of Days to be Claimed at a Future Date 606
---	---	---	--

All the work was performed on Mining Claim(s): Indicate no. of days performed on each claim. * (See note No. 1 on reverse side)				Mining Claim P1114596	No. of Days 55	Mining Claim P995807	No. of Days 55	Mining Claim P995808	No. of Days 55	Mining Claim P986589	No. of Days 55	Mining Claim P986584	No. of Days 55	Mining Claim P986585	No. of Days 55	Mining Claim P986587	No. of Days 55
---	--	--	--	---------------------------------	------------------------------	--------------------------------	------------------------------	--------------------------------	------------------------------	--------------------------------	------------------------------	--------------------------------	------------------------------	--------------------------------	------------------------------	--------------------------------	------------------------------

Required information eg. type of equipment, Names, Addresses, etc. (See Table on reverse side)
If space below is insufficient, attach schedules with required information and location sketches

DRILL CONTRACTOR **DATES OF DRILLING**

Ed Colbert Diamond Drilling & Exploration Ltd.
167 Lakeshore
Timmins, Ontario

SEPT 1 - Sept 5 1989
Sept. 13 - Sept 15 1989

ONTARIO GEOLOGICAL SURVEY
ASSESSMENT FILES
OFFICE

JAN 11 1990

RECEIVED

Certification of Beneficial Interest * (See Note No. 2 on reverse side)

I hereby certify that, at the time the work was performed, the claims covered in this report of work were recorded in the current recorded holder's name or held under a beneficial interest by the current recorded holder.

Date: **OCT. 17, 1989** Recorded Holder or Agent (Signature): **Robert G. Komarechka**

Certification Verifying Report of Work

I hereby certify that I have a personal and intimate knowledge of the facts set forth in the Report of Work annexed hereto, having performed the work or witnessed same during and/or after its completion and the annexed report is true.

Name and Address of Person Certifying: **Robert Gerald Komarechka Apt #1 396 Eva Ave, Sudbury, Ontario**

Telephone No.: **(705) 673-0873** Date: **OCT. 17, 1989** Certified By (Signature): **Robert G. Komarechka**

For Office Use Only

Work Assignments	Received Stamp
	<div style="border: 1px solid black; padding: 5px; display: inline-block;"> <p>RECORDED</p> <p>DEC 18 1989</p> </div> <div style="border: 1px solid black; padding: 5px; display: inline-block; margin-left: 20px;"> <p>PORCUPINE MINING DIVISION</p> <p>RECEIVED</p> <p>DEC. 18 1989</p> <p>10:30 fu</p> </div>