



42B02SE0002 10 CARTY

Diamond Drilling

010

Township of CARTY

Report NO: 10

Work performed by: Keevil Mining Group Limited

Claim NO	Hole NO	Footage	Date	Note
S 121418	65-4	354.0'	Feb/65	

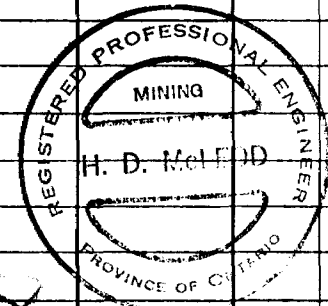
Notes:

# DIAMOND DRILL RECORD

PROPERTY KEEVIL MINING GROUP LTD.  
PROJECT IVANHOE - PROPERTY 31 HOLE NO. 64-4  
CARTY TWP

SHEET NUMBER 1 SECTION FROM \_\_\_\_\_ TO \_\_\_\_\_ STARTED February 5, 1965  
 LATITUDE 54 00N DATUM \_\_\_\_\_ COMPLETED February 8, 1965  
 DEPARTURE 324 00E BEARING South ULTIMATE DEPTH 354.0  
 ELEVATION \_\_\_\_\_ DIP 45° PROPOSED DEPTH \_\_\_\_\_

DEPTH FEET	FORMATION	SAMPLE No.	WIDTH OF SAMPLE	GOLD \$	SLUDGE GOLD \$
0.0 - 21.0	OVERBURDEN				
21.0 - 140.0	GRANITE GNEISS - Coarse-grained grey mixture of quartz feldspar, hornblende and biotite. Lineated at 80° to the core axis. At 120.0' small red garnets appear and increase in size and number along the section.				
140.0 - 153.0	HORNBLLENDE GNEISS - Coarse-grained, garnetiferous. Lineated at 80° to 85° to the core axis. Disseminated large grains of pyrite throughout. Grains of magnetite in some sections. Semi-massive stringers of pyrite and pyrrhotite increase in number along the section to a 6" vein of sulphide at 153.0 feet. 15% sulphide.				
	144.0 - 153.0	4900	9.0		
153.0 - 241.0	HORNBLLENDE GNEISS - Fine-grained, black mixture of hornblende, feldspar and quartz. Lineated at 85° to the core axis. 191.0-192.5 - Pegmatite dike, - Coarse, pink.				
241.0 - 274.0	PEGMATITE - Coarse grained, pink.				
274.0 - 296.0	GRANITE GNEISS - Narrow pegmatite dikes.				
296.0 - 307.0	PEGMATITE				
307.0 - 354.0	GRANITE GNEISS - Narrow pegmatite dikes. Lineated at 85° to the core axis.				
354.0	END OF HOLE				

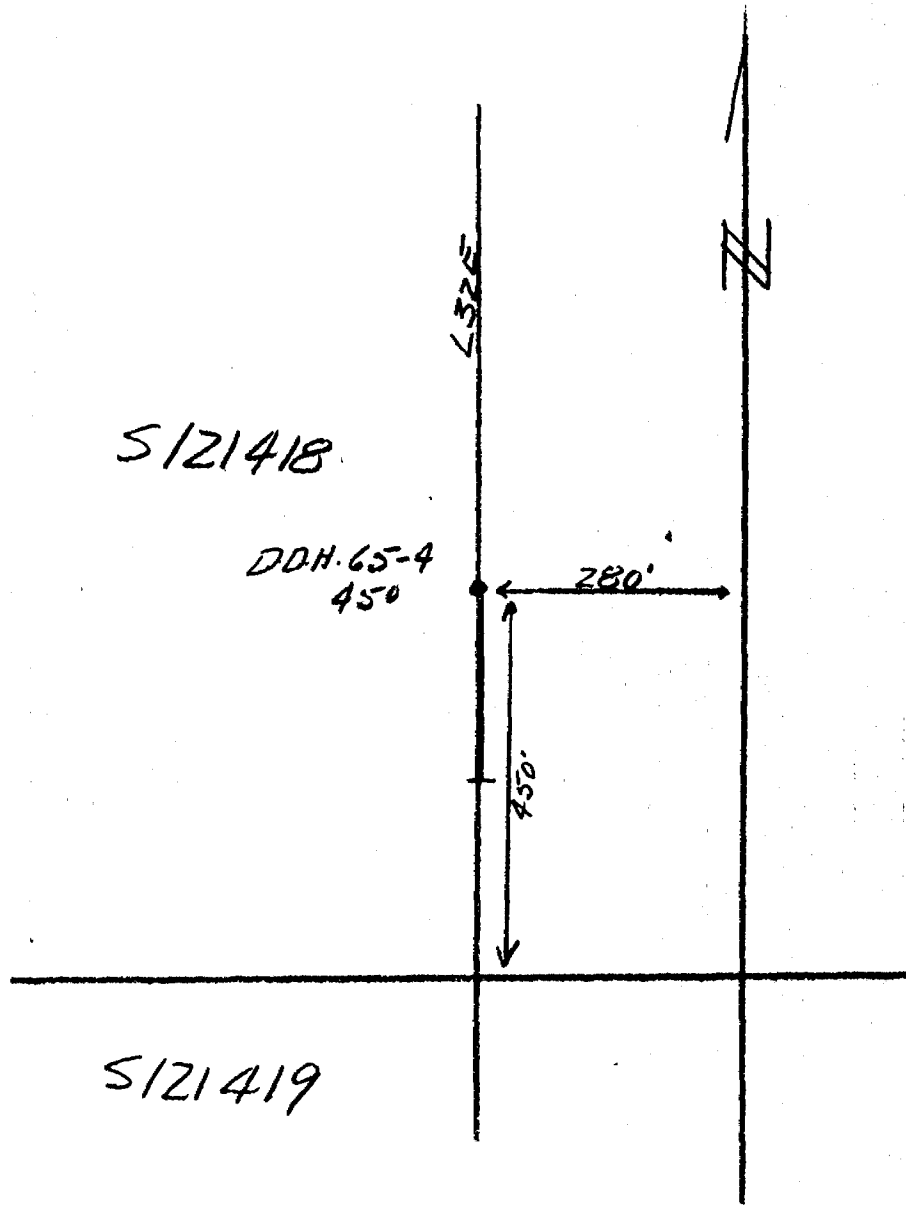


*Handwritten:* P-121418

DRILLED BY Continental Drilling Co.

SIGNED H. D. McLeod

CARTY TWP



S121418

DDH. 65-4  
450

280'

450'

S121419