



42B02SE0003 11 CARTY

Diamond Drilling

010

Township of CARTY

Report NO: 11

Work performed by: Keevil Mining Group Limited

Claim NO	Hole NO	Footage	Date	Note
S 121423	65-05	358.0'	Feb/65	

Notes:

DIAMOND DRILL RECORD

1-11

PROPERTY _____

KEEVIL MINING GROUP LTD.
PROJECT IVANHOE - GROUP 31
CARTY TWP

HOLE NO. 68-5

SHEET NUMBER 1

SECTION FROM _____ TO _____

STARTED February 11, 1965

LATITUDE 8 / 20N

DATUM _____

COMPLETED February 15, 1965

DEPARTURE 52 / 00E

BEARING South

ULTIMATE DEPTH 358.0 ft.

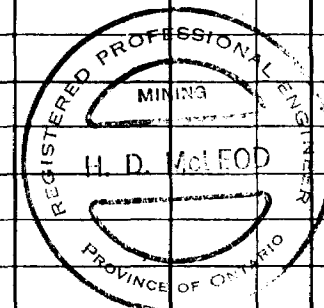
ELEVATION _____

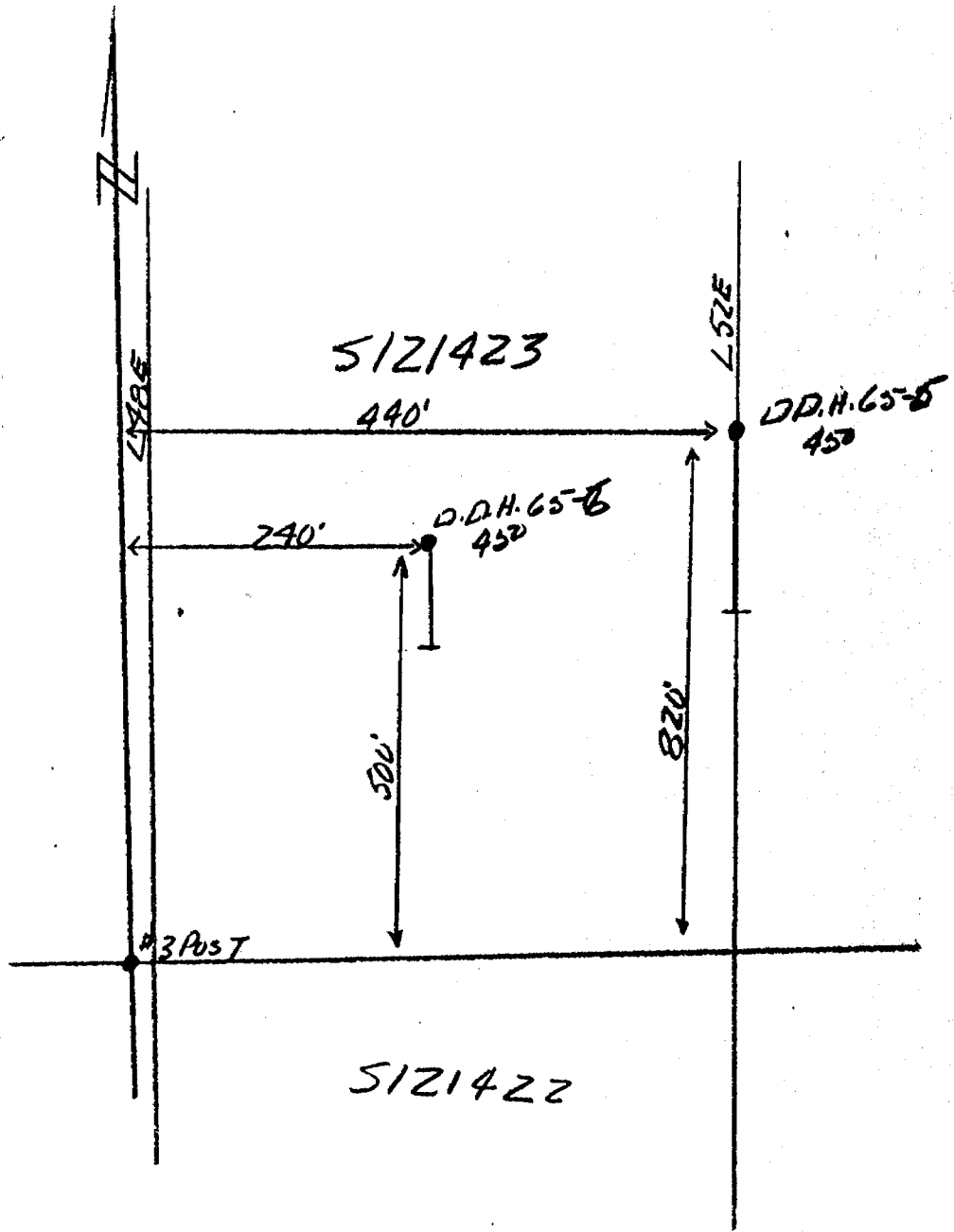
DIP 45°

PROPOSED DEPTH _____

DEPTH FEET	FORMATION	SAMPLE NO.	WIDTH OF SAMPLE	GOLD g	SLUDGE GOLD g
0.0 - 81.0	OVERBURDEN				
81.0 - 83.0	GRANITE - Medium-grained, pink				
83.0 - 160.0	HORNBLLENDE GNEISS - Fine-grained, thinly bedded at 80° to 85° to the core axis. Pink granite stringers.				
160.0 - 284.0	GRANITE GNEISS - Slightly banded hornblende - rich granite gneiss. Coarse-grained, grey to 186.0 then much pink material with some pegmatite. Evenly banded at 80° to the core axis.				
284.0 - 358.0	HORNBLLENDE GNEISS - Coarse-grained. 290.0-292.0 -Thinly disseminated small grains of chalcopryite, pyrite and magnetite. 314.0 -2" section of disseminated pyrite, pyrrhotite, chalcopryite and magnetite. 341.0-358.0-Large patches and grains of red garnet. A few grains of chalcopryite.				
358.0	END OF HOLE				

R-121423





5121423

440'

240'

500'

820'

D.D.H. 65-5
45D

D.D.H. 65-B
45D

#3 Post

5121422

L 52E

L 49E