



42B08NW0005 20 NOVA

010

Diamond Drilling

Township of NOVA

Report NO: 20

Work performed by: Area Mines Limited

Claim NO	Hole NO	Footage	Date	Note
S.121931	2	391'	July/64	

Notes:

AREA MINES LIMITED
(NO PERSONAL LIABILITY)

*Sudbury Dist
Nova Trup
Hibernia Group*

DRILL HOLE #2

Location: 8 + 50N - Line 12E
Direction: North
Dip: 52°

Depth: 391
Start: July 4 1964
End: July 12 1964

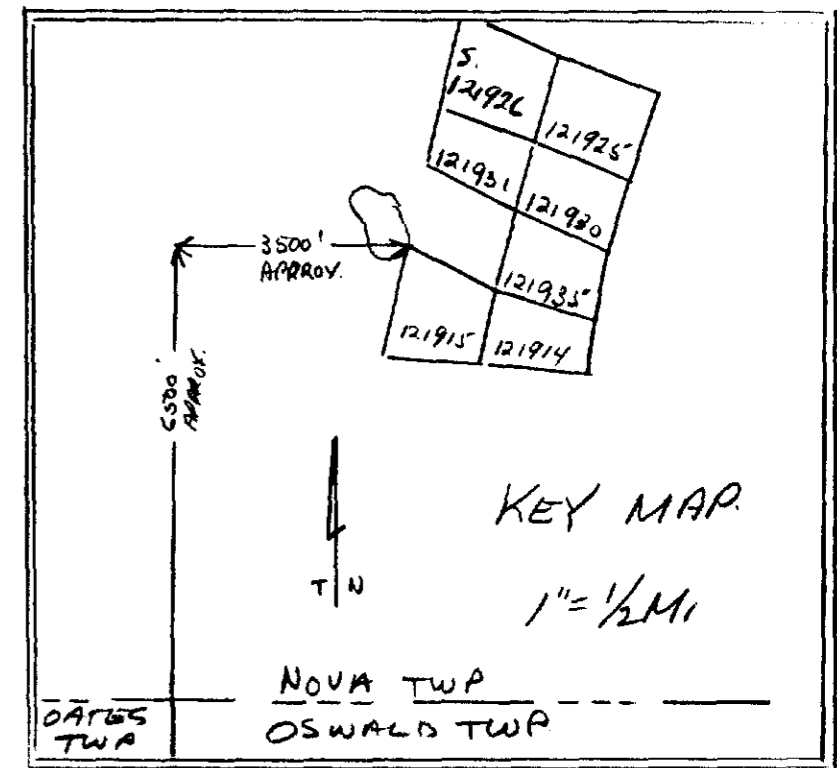
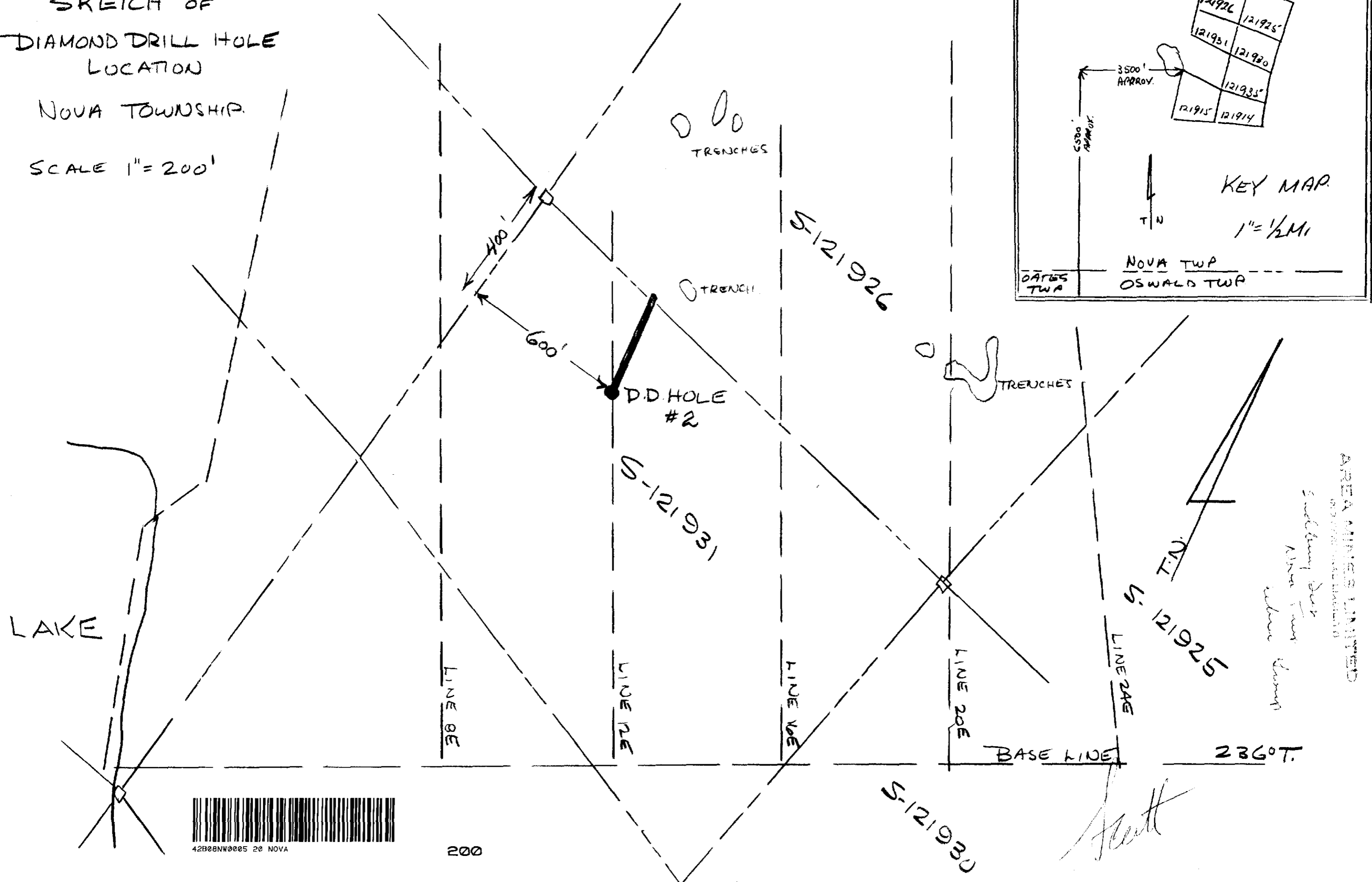
- 0 - 22 Casing.
- 22 - 28 Chlorite - grunerite schist (metasediment?) schistosity at 70° to core axis, disseminated pyrite, minor magnetite, trace chalcopyrite.
- 28 - 122 Banded massive quartzite, 70° to core axis. Stringers of pyrite, pyrrhotite, flecks of magnetite, chalcopyrite. Dark red-brown chlorite along fracture planes.
- 122 - 165 Chlorite - grunerite schist, 70 - 75° to core axis. Disseminated pyrite, flecks chalcopyrite.
- 169 - 391 Banded massive quartzite with stringers of pyrite, pyrrhotite. minor chalcopyrite, magnetite, chlorite, grades toward iron formation at end of hole.
- 182.5 - 186 Contains 35% pyrite and pyrrhotite, flecks chalcopyrite.
- 186 - 191 Massive pyrrhotite, disseminated pyrite.
- 327 - 345 Gneissic texture.
- 345 - 347 Quartz stringers cut core at irregular contacts, silicification.
- 347 - 391 Gneissic texture.

121931

SKETCH OF
DIAMOND DRILL HOLE
LOCATION

NOVA TOWNSHIP.

SCALE 1" = 200'



Scott