



42B09NW0016 13 BELFORD

010

Diamond Drilling

Township of BELFORD

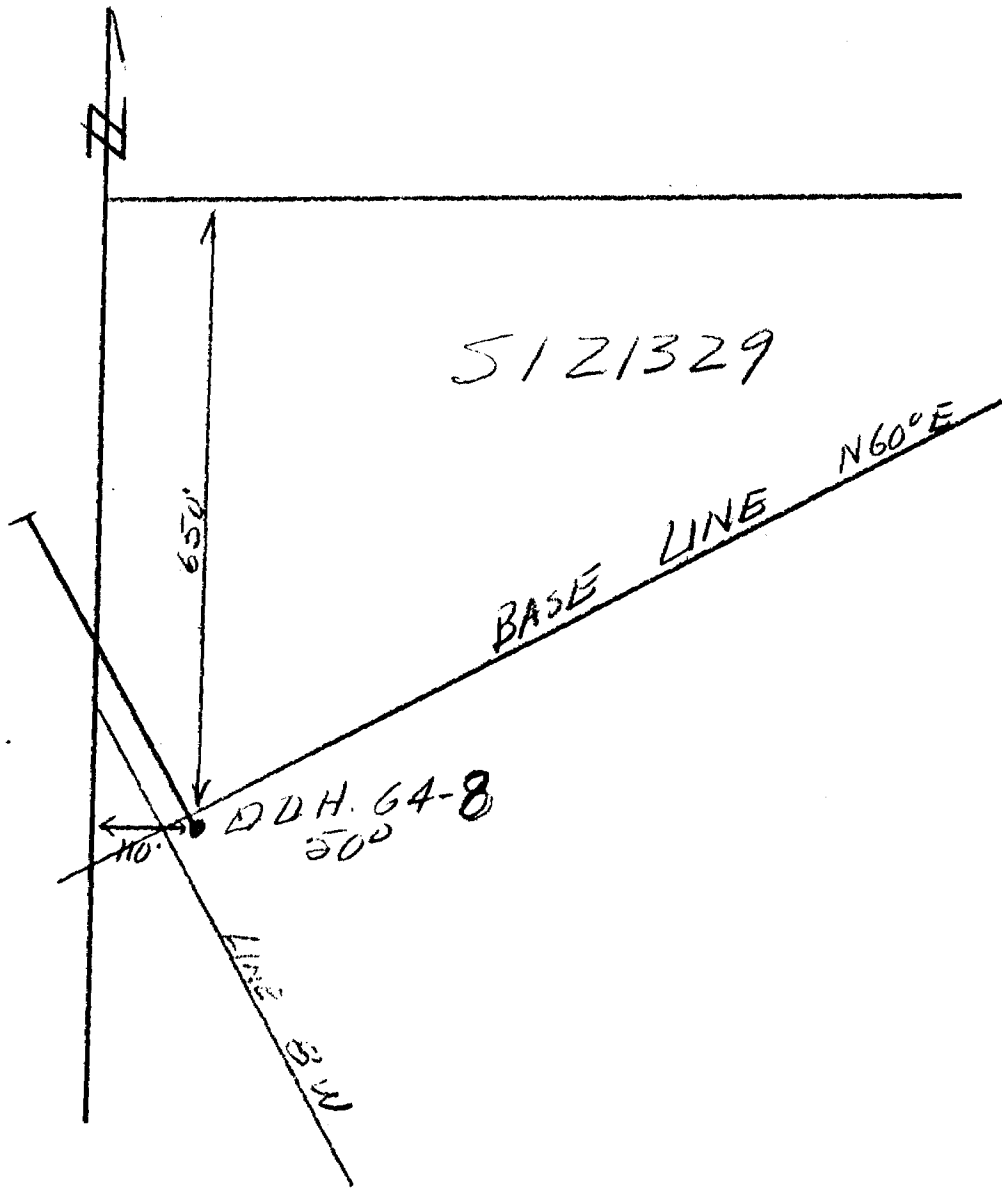
Report No 13

Work performed by: Keevil Mining Group

Claim No	Hole No	Footage	Date	Note
S 121329	64-8	434.0'	Sept/64	
	65-1	150.0'	Sept/64	
	66-4	535.0'	Mar/66	
S 121334	64-9	480.0'	Sept/64	
	66-1	423.0'	Feb/66	
S 121338 (121337)	66-2	240.0'	Feb/66	
	66-3	509.0'	Feb/66	
S 121330 (121335)	66-5	475.0'	Mar/66	

3246.

Notes:



DIAMOND DRILL RECORD

S-121329

KEEVIL MINING GROUP LTD.
PROPERTY _____ **PROJECT** IVANHOE -- ANOMALIES 13-14 **HOLE NO.** 64-8

SHEET NUMBER 1 SECTION FROM _____ TO _____ STARTED Sept. 5, 1964
 LATITUDE 0 / 50S DATUM _____ COMPLETED Sept. 15, 1964
 DEPARTURE 7 / 50W BEARING N30°W ULTIMATE DEPTH 434.0 ft.
 ELEVATION _____ DIP 50° PROPOSED DEPTH _____

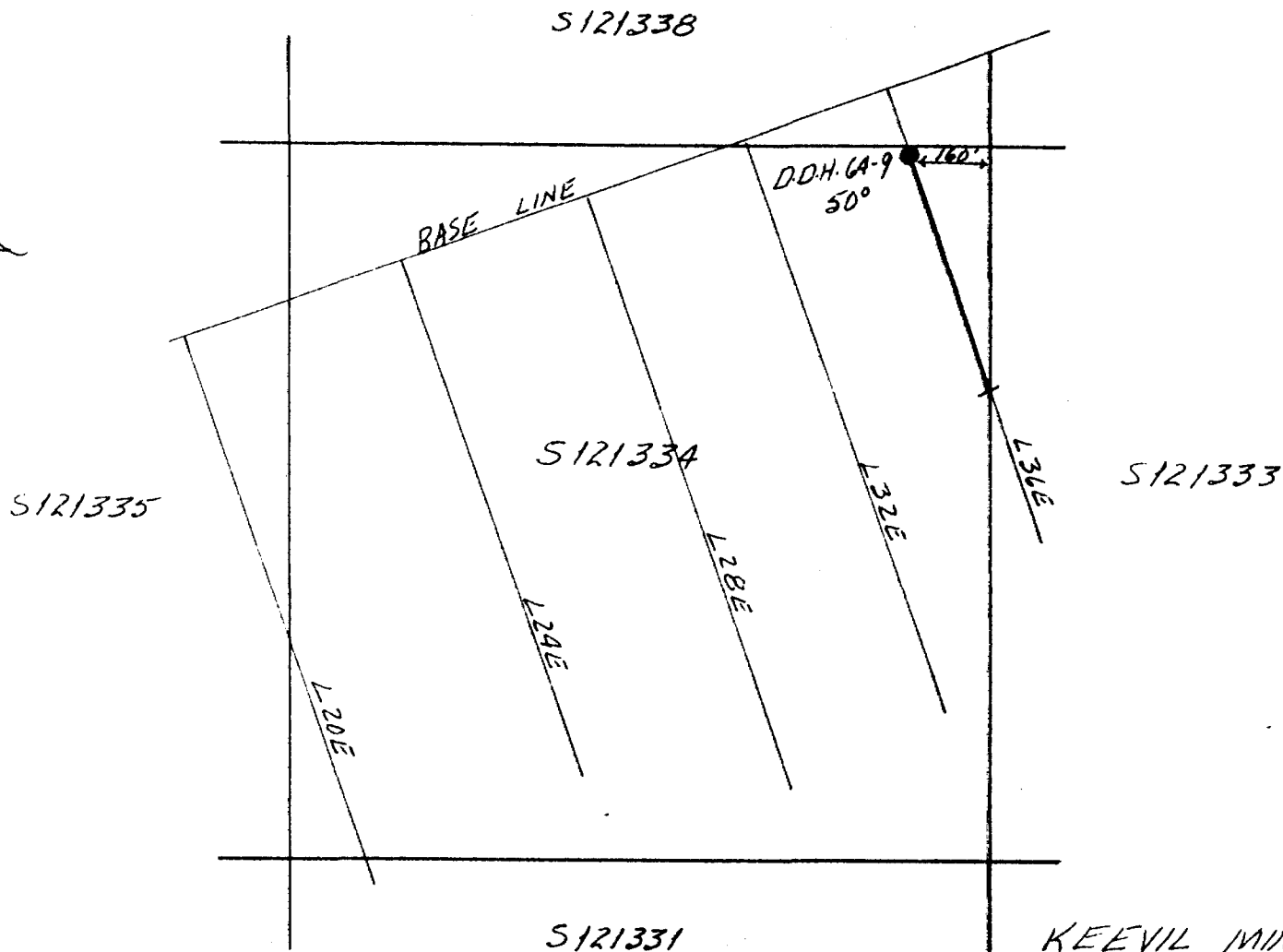
DEPTH FEET	FORMATION	SAMPLE NO.	WIDTH OF SAMPLE	GOLD \$	SLUDGE GOLD \$
0.0 - 290.0	OVERBURDEN				
290.0 - 321.0	SLATE - Hard, black, uniform, non-graphitic, bedded regularly at 60° to the core axis. Scattered seams, narrow stringers and nodules of pyrite comprise 5% of the section. Specimens tested indicate that this material is the conductor.				
321.0 - 434.0	TALC - White rounded to angular phenocrysts to 1/4" in a fine dark grey groundmass. Mainly talc but considerable carbonate, probably magnesium carbonate present. Some very fine disseminated pyrite in places. Slightly chloritic at the end with minor pyrrhotite and chalcopyrite.				
434.0	END OF HOLE				
		311.2 - 321.2	4237	10.0	
		321.2 - 331.2	4238	10.0	
		427.0 - 434.0	4239	7.0	



DRILLED BY B oyles Bros.

SIGNED J. O. m. Ford

S. 121329



KEEVIL MINING GROUP.
PROJECT IVANHOE
GROUP 1 - BELFORD TWP.

Feb. 1966.

DIAMOND DRILL RECORD

S121329

PROPERTY KEEVIL MINING GROUP LTD. HOLE NO. 65-1
PROJECT IVANHOE - GROUP 1, Belford Twp.
 SHEET NUMBER 1 SECTION FROM _____ TO _____ STARTED Sept. 5/64
 LATITUDE 0 + 50S DATUM _____ COMPLETED Sept. 15/64
 DEPARTURE 7 + 50W. BEARING N 30° W. ULTIMATE DEPTH 150 feet
 ELEVATION _____ DIP 50° PROPOSED DEPTH _____

DEPTH FEET	FORMATION	SAMPLE NO.	WIDTH OF SAMPLE			
0.0 - 150.0	OVERBURDEN					

NUGGET-3566-2M

DRILLED BY Boyles Bros. Drilling Ltd.

SIGNED *[Signature]*

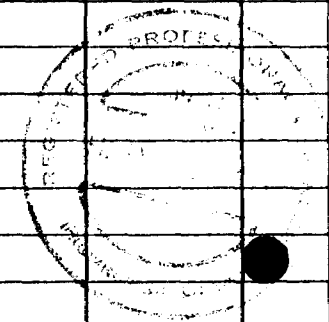
DIAMOND DRILL RECORD

THE KEEVIL MINING GROUP LTD. - PROJECT IVANHOE
 PROPERTY Anomalies 13-14, BELFORD TOWNSHIP

HOLE NO. 64-9

SHEET NUMBER 1 SECTION FROM _____ TO _____ STARTED Sept. 24, 1964.
 LATITUDE 2 / 00S DATUM _____ COMPLETED Oct. 6, 1964.
 DEPARTURE 36 / 00W BEARING S 30° E ULTIMATE DEPTH 480.0 feet.
 ELEVATION _____ DIP 50° PROPOSED DEPTH _____

DEPTH FEET	FORMATION	SAMPLE No.	WIDTH OF SAMPLE	GOLD %	SLUDGE GOLD †
0.0 - 110.0	<u>OVERBURDEN</u>				
110.0 - 229.0	<u>ANDESITE OR DACITE</u> - Probably pillowed, fine grained, grey, massive, some amygdaloidal sections. Scattered slaty seams to 3" wide containing seams and stringers of pyrrhotite with some pyrite and chalcopryite. These lie regularly at 30° to the core axis. At 172.0 feet the rock becomes lighter in color and more siliceous. Patches of biotite mica are present throughout. Some dioritic sections, numbers of quartz-carbonate stringers. A few seams of sulphides as above.				
229.0 - 244.0	<u>SLATEY SECTION</u> - Appears to be black lava rather than slate. Some pyrrhotite with minor amounts of chalcopryite.				
244.0 - 274.0	<u>DACITE</u> - As above.				
274.0 - 309.0	<u>RHYOLITE</u> - Numbers of narrow slaty seams with seams and stringers of pyrrhotite, pyrite and chalcopryite. The seams at 35° to 40° to the core axis. Overall 2% to 3% sulphides.				



W.D. McLeod P. Eng.

DIAMOND DRILL RECORD

PROPERTY _____ HOLE NO. 64-9

SHEET NUMBER 2 SECTION FROM _____ TO _____ STARTED _____

LATITUDE _____ DATUM _____ COMPLETED _____

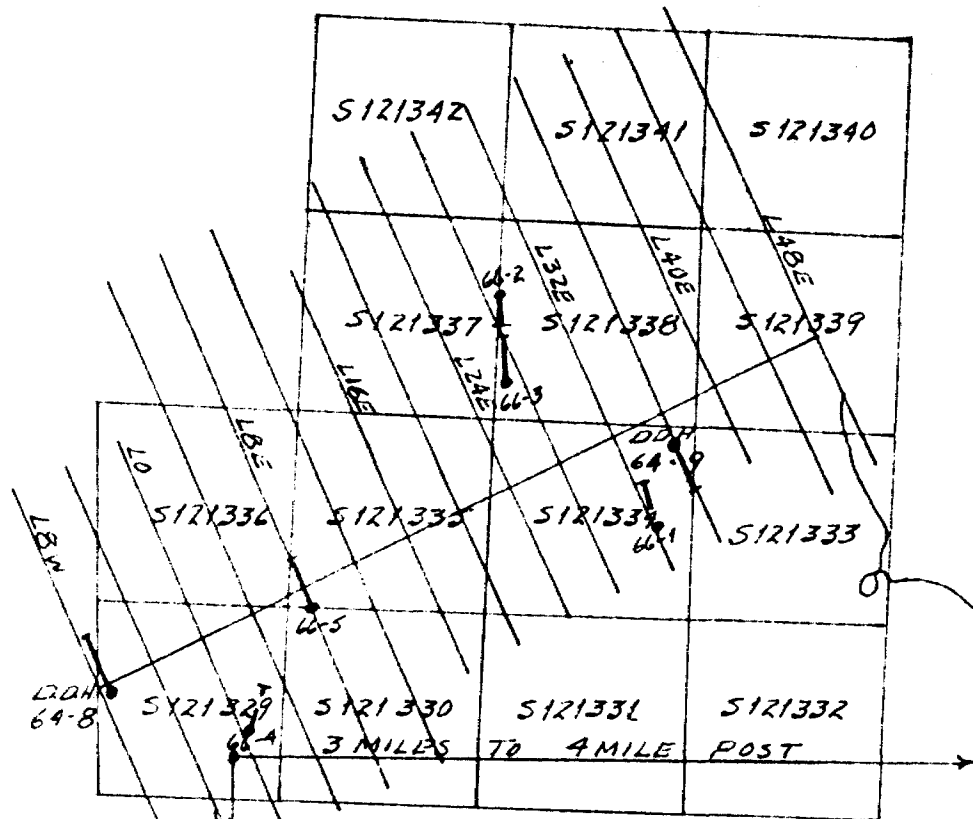
DEPARTURE _____ BEARING _____ ULTIMATE DEPTH _____

ELEVATION _____ DIP _____ PROPOSED DEPTH _____

DEPTH FEET	FORMATION	SAMPLE NO.	WIDTH OF SAMPLE	GOLD \$	SLUDGE GOLD \$
309.0 - 406.0	<u>RHYOLITE</u> - Light grey with darker sections, massive, uniform, possibly pillowed, widely scattered 1" slaty seams with seams of pyrrhotite, pyrite and chalcopyrite.				
406.0 - 411.0	<u>SLATE</u> - Black, non-graphitic, some pyrite, bedded at 45° to the core axis.				
411.0 - 443.0	<u>RHYOLITE</u> - Medium grained, greenish, altered material possibly a highly altered basic rock. Rare seams of pyrrhotite with minor amounts of chalcopyrite.				
443.0 - 480.0	<u>RHYOLITE</u> - Light grey, hard, siliceous, fresh, possibly pillowed, two or three widely scattered stringers of massive pyrrhotite with minor amounts of chalcopyrite.				
480.0	<u>END OF HOLE.</u>				

N.M.P., TORONTO-STOCK FORM NO. 501 REV. 12/51

DRILLED BY Boyles Bros. Ltd. SIGNED _____



BELFORD TWP.

KEEVIL MINING GROUP LTD.
 PROJECT IVANHOE
PROPERTY 1.

SCALE 1" = 1/4 MILES JAN 1965

DIAMOND DRILL RECORD

THE KEEVIL MINING GROUP LTD.
PROJECT IVANHOE - GROUP 1.

S-121329

PROPERTY _____

HOLE NO. 66-1

SHEET NUMBER 1

SECTION FROM _____ TO _____

STARTED February 8, 1966

LATITUDE 6 / 20S

DATUM _____

COMPLETED February 11, 1966

DEPARTURE 32 / 00E

BEARING N 20° W

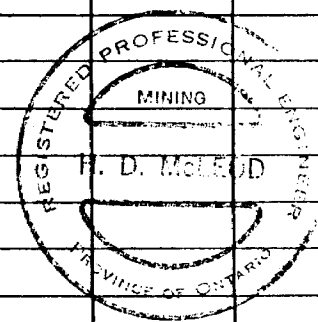
ULTIMATE DEPTH 423.'0

ELEVATION _____

DIP 50°

PROPOSED DEPTH _____

DEPTH FEET	FORMATION	SAMPLE NO.	WIDTH OF SAMPLE	GOLD %	SLUDGE Silver
0.0 - 115.0	OVERBURDEN				
115.0 - 191.5	ANDESITE - Medium to dark grey, medium grained, massive. Some siliceous amygdaloidal sections throughout, probably pillows. Sporadic slaty seams up to 3" wide at 40°-50° to core axis filled with seams, stringers and disseminated grains of pyrrhotite, pyrite and traces of chalcopyrite. Overall 3-5% sulphides.				
151.5-163.5	Altered, becoming lighter in colour. Considerable siliceous with some bluish quartz stringers up to 2" wide. Seams and stringers of pyrrhotite and pyrite with some chalcopyrite. 5-10% sulphides in this particular section.	5981	12.0	NIL	NIL
191.5 - 380.5	RHYOLITE - Light grey colour. Scattered slaty seams up to 3" wide with seams, stringers and nodules of massive pyrite, pyrrhotite, and some chalcopyrite up to 335.'0. Spacings of seams 2"-24" and at 55°-60° to core axis. Overall 5-15% sulphides.				



N.M.P., TORONTO - STOCK FORM NO. 501 REV. 12/51

DRILLED BY Continental D. D. Co. Ltd.

SIGNED F. D. McLeod

DIAMOND DRILL RECORD

PROPERTY _____

HOLE NO. 66-1

SHEET NUMBER 2

SECTION FROM _____ TO _____

STARTED _____

LATITUDE _____

DATUM _____

COMPLETED _____

DEPARTURE _____

BEARING _____

ULTIMATE DEPTH _____

ELEVATION _____

DIP _____

PROPOSED DEPTH _____

DEPTH FEET	FORMATION	SAMPLE NO.	WIDTH OF SAMPLE	GOLD \$	SLUDGE GOLD \$ Silver	Copper	Nickel
	From 335.10 mineralization is increasing by closely spaced seams and more disseminated grains of pyrite and pyrrhotite up 25% sulphides. Pyrrhotite is magnetic.						
	335.5 - 345.5	5977	10.0		NIL	0.03	TR.
	375.0 - 380.5	5978	5.5		0.02	0.03	0.01
380.5 - 384.5	<u>SERICITE-TALC-CARBONATE SCHIST</u> - Light grey with light greenish stringers of talc and numerous quartz carbonate stringers. Slightly chloritic. Some 1/8" seams and stringers of pyrite and pyrrhotite with traces of chalcopyrite. Overall 1-3% sulphides.						
	380.5 - 384.5	5979	4.0	NIL	NIL		
384.5 - 389.5	<u>SLATE</u> - Distinct contact at 60° to core axis. Fine grained, hard, black, weakly graphitic. Regularly bedded at 60° to core axis. 1-2% pyrrhotite and pyrite in narrow stringers and seams.						
	384.5 - 389.5	5890	5.0	NIL	TR.		

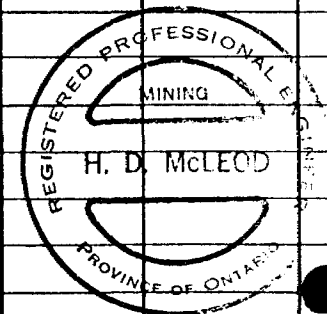
DIAMOND DRILL RECORD

THE KEEVIL MINING GROUP LTD.
PROJECT IVANHOE - GROUP 1.

PROPERTY _____ HOLE NO. 66-3

SHEET NUMBER 1 SECTION FROM _____ TO _____ STARTED February 26, 1966
 LATITUDE 6 / 20 N DATUM _____ COMPLETED March 3, 1966
 DEPARTURE 27 / 00 E BEARING N 10° W ULTIMATE DEPTH 509.10
 ELEVATION _____ DIP 50° PROPOSED DEPTH _____

DEPTH FEET	FORMATION	SAMPLE NO.	WIDTH OF SAMPLE	GOLD \$	SLUDGE GOLD \$
0.0 - 206.0	CASING - (Overburden probably down to 197.10)				
206.0 - 216.5	DACITE - Probably pillowed. Fine grained, dark grey, hard and massive. A few greenish sections with white bluish amygdaloides. Some pronounced thin slaty seams at 50°-60° to core axis. / 1% combined pyrite and pyrrhotite in seams.				
216.5 - 240.5	RHYOLITE - Medium to light greenish grey, medium to coarse grained. Sheared at 25° to core axis. Carbonated chloritic along the shearing. A few 1"-2" white bluish quartz stringers at 50° to core axis. At contact (216.5) 6" of sandy seam. Traces of pyrite and pyrrhotite.				
240.5 - 253.5	SLATEY SECTION - It appears to be black lava rather than slate. Distinct contact, some regular bedding and some definite lineations at 45° to core axis. Chloritic and talcose in places. Some pyrite, pyrrhotite and traces of granular chalcopryrite.				
253.5 - 257.0	RHYOLITE - As above.				



DRILLED BY Continental D. D. Co. Ltd.

SIGNED H. D. McLeod

DIAMOND DRILL RECORD

PROPERTY _____ HOLE NO. 66-3

SHEET NUMBER 2 SECTION FROM _____ TO _____ STARTED _____
 LATITUDE _____ DATUM _____ COMPLETED _____
 DEPARTURE _____ BEARING _____ ULTIMATE DEPTH _____
 ELEVATION _____ DIP _____ PROPOSED DEPTH _____

DEPTH FEET	FORMATION	SAMPLE No.	WIDTH OF SAMPLE	GOLD \$	SLUDGE GOLD \$	Copper	Nickel
257.0 - 259.0	SLATE - Black, hard, uniform, non-graphitic, bedded at 50° to core axis.						
259.0 - 262.0	LAMPROPHYRE DIKE - A dark grey, medium to coarse grained, dioritic. Contacts sharp and chilled at 50° to core axis.						
262.0 - 337.0	ANDESITE OR DACITE - Medium to fine grained, medium to dark grey, Hard and massive. Uniform texture. Sheared at 25° and 45° to core axis in places and chloritic along the shearing. Altered from 330.5-336.0 . At 313.5 = 6" barren quartz vein at 45° to core axis and at 330.5 = 7" irregular barren quartz. Some pyrite and pyrrhotite.						
337.0 - 345.3	SLATE - Fine, black, hard, non-graphitic. Contacts and evenly bedded at 60° to core axis. Some granular pyrite in seams.						
	337.0 - 343.5	5982	6.5				
345.3 - 365.5	ANDESITE OR DACITE - As above.						
365.5 - 396.0	RHYOLITE - Medium grained, greenish grey, hard, massive and uniform. Siliceous. Groundmass is crystalline and glassy. Sheared at 25°- 30° to core axis.						

DRILLED BY Continental D. D. Co. Ltd. SIGNED _____

DIAMOND DRILL RECORD

PROPERTY _____ HOLE NO. 66-3

SHEET NUMBER 3 SECTION FROM _____ TO _____ STARTED _____
 LATITUDE _____ DATUM _____ COMPLETED _____
 DEPARTURE _____ BEARING _____ ULTIMATE DEPTH _____
 ELEVATION _____ DIP _____ PROPOSED DEPTH _____

DEPTH FEET	FORMATION	SAMPLE NO.	WIDTH OF SAMPLE	GOLD \$	SLUDGE GOLD \$	Copper Nickel
396.0 - 406.5	ANDESITE - Medium grey, medium grained, massive, uniform and soft. Altered and bleached 18" out from contact (406.4) with minor tarnished granular pyrite.					
406.5 - 413.0	GRAPHITIC SLATE - Black, fine grained, graphitic, bedded at 60°-70° to core axis. Scattered splashes and seams of pyrite \neq 1%. At 407.15 = 24" of altered, graphitic, chloritic dark grey andesite with some scattered pyrite in seams and patches.	5983	6.5			
413.0 - 464.5	TALC-CARBONATE ZONE - Light grey-green mixture of talc and carbonate with numerous white rounded to angular phenocrysts to 3/8" in a fine dark grey ground mass. Mainly talc. Sheared at 25° and 45° to core axis. Some fine disseminated pyrite and traces of pyrrhotite.					
464.5 - 471.0	GRAPHITE - Altered, graphitic dark grey andesite in the first 2 feet with some disseminated pyrite. The rest of section broken core due to the soft, steel-grey to black graphite and a few inches of massive graphitic slates. Contacts at 60°-70° to core axis. Scattered seams and patches of pyrite \neq 1%.					

DIAMOND DRILL RECORD

THE KEEVIL MINING GROUP LTD.

PROPERTY _____

PROJECT IVANHOE - GROUP 1.

HOLE NO. 66-4

SHEET NUMBER 1

SECTION FROM _____ TO _____

STARTED March 6, 1966

LATITUDE 7 / 40 S

DATUM _____

COMPLETED March 11, 1966

DEPARTURE 0 / 60 E

BEARING N 5° E

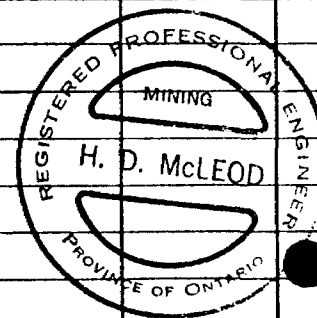
ULTIMATE DEPTH 535.10

ELEVATION _____

DIP 50°

PROPOSED DEPTH _____

DEPTH FEET	FORMATION	SAMPLE NO.	WIDTH OF SAMPLE	GOLD \$	SLUDGE GOLD \$
0.0 - 106.0	OVERBURDEN				
106.0 - 201.0	CLIVINE - DIABASE DIKE - Medium to dark grey, medium to coarse grained. Small yellowish green grains of olivine with glassy luster and transparent. Some shearing at 40° to core axis. A few 1" = 24" very fine grained, highly altered, fragmental and slightly chloritic andesitic sections, cutting the core axis at 20°-30°. The sections contain minor pyrite.				
201.0 - 235.0	TUFF - Medium grained, dark grey. Altered, slightly talcy and graphitic along thin beds. Fragmental. Poor bedding at 45° to core axis.				
235.0 - 251.0	SLATEY SECTION - Slightly graphitic and talcy along bedding and seams. Some irregular bedding 30° and 50° to core axis.				
251.0 - 416.0	RHYOLITE - Medium to light grey, medium grained with darker sections. Uniform and massive. At 336 - 18" altered slatey section, bedded at 45° to core axis.				
416.0 - 431.0	ANDESITE - Medium to fine grained, medium grey. Altered with some irregular quartz stringers and				



N.M.P., TORONTO-STOCK FORM NO. 901 REV. 12/51

DRILLED BY Continental D. D. Co. Ltd.

SIGNED H. D. McLeod P. Eng.

DIAMOND DRILL RECORD

PROPERTY _____ HOLE NO. 66-4

SHEET NUMBER 2 SECTION FROM _____ TO _____ STARTED _____
 LATITUDE _____ DATUM _____ COMPLETED _____
 DEPARTURE _____ BEARING _____ ULTIMATE DEPTH _____
 ELEVATION _____ DIP _____ PROPOSED DEPTH _____

DEPTH FEET	FORMATION	SAMPLE NO.	WIDTH OF SAMPLE	GOLD \$ Cu	SLUDGE GOLD \$ Zn	Ag
	minor pyrite.					
431.0 - 454.5	SLATEY SECTION - Graphitic along bedding and lination. Bedded at 45°- 50° to core axis. Some pyrite in seams.					
454.5 - 466.5	GRAPHITE - Soft steel-grey to black graphite. Numerous threads and narrow stringers of quartz and carbonate. Bedding at 50° to core axis. ≠ 3% pyrite in seams, threads and nodules. Traces of chalcoppyrite.					
	454.5 - 466.5	1001	12.0	0.04	0.06	0.04
466.5 - 474.5	ANDESITE - Altered, medium grey, medium grained. Some graphitic slatey seams and quartz carbonate threads. Some pyrite in seams.					
474.5 - 480.0	GRAPHITIC SLATE - Same as above with ≠ 10% pyrite and traces of chalcoppyrite.					
	474.5 - 480.0	1002	5.5	0.05	0.02	NIL
480.0 - 488.0	ANDESITE - Same as above.					
488.0 - 501.5	GRAPHITE - Same as above with ≠ 5% pyrite and traces of chalcoppyrite.					
	488.0 - 501.5	1003	13.5	0.05	0.10	●

DIAMOND DRILL RECORD

PROPERTY _____ HOLE NO. 66-4

SHEET NUMBER 3 SECTION FROM _____ TO _____ STARTED _____
 LATITUDE _____ DATUM _____ COMPLETED _____
 DEPARTURE _____ BEARING _____ ULTIMATE DEPTH _____
 ELEVATION _____ DIP _____ PROPOSED DEPTH _____

DEPTH FEET	FORMATION	SAMPLE No.	WIDTH OF SAMPLE	GOLD \$	SLUDGE GOLD \$
501.5 - 535.0	TALC ZONE - Altered flow (?). Mixture of talc, chlorite and carbonate. Soft, Medium-grained, dark to black in colour. Traces of pyrite.				
535.0	END OF HOLE.				

N.M.P., TORONTO-STOCK FORM NO. 801 REV. 12/51

DRILLED BY Continental D. D. Co. Ltd. SIGNED _____

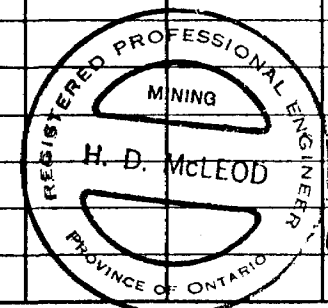
DIAMOND DRILL RECORD

THE KEEVIL MINING GROUP LTD.
 PROJECT IVANHOE - GROUP 1.

PROPERTY _____ HOLE NO. 66-5

SHEET NUMBER 1 SECTION FROM _____ TO _____ STARTED March 12, 1966
 LATITUDE 1 / 40 S DATUM _____ COMPLETED March 16, 1966
 DEPARTURE 8 / 00 E BEARING N 30° W ULTIMATE DEPTH 475.10
 ELEVATION _____ DIP 50° PROPOSED DEPTH _____

DEPTH FEET	FORMATION	SAMPLE NO.	WIDTH OF SAMPLE	GOLD \$ Copper	SLUDGE Zinc \$ Silver
0.0 - 206.0	OVERBURDEN				
206.0 - 236.0	ANDESITE - Medium to fine grained, medium grey to greenish grey. Massive and uniform. Slightly chloritic. Sheared at 30° and 50° to core axis. Some sulphides. At 216.0' and 223.5' = 30" slatey section: fine grained, dark grey, hard, bedded at 55° to core axis.				
236.0 - 241.0	SLATE - Fine grained, dark grey and hard. Slightly graphitic and siliceous. Bedded at 50° to core axis.				
241.0 - 371.5	ANDESITE - Medium to fine grained, medium grey to greenish grey. Massive and uniform. Slightly chloritic. Some shearing at 30° and 50° to core axis. Some short sections of porphyritic texture. At 304.5 = 24" slatey section, slightly graphitic and bedded at 50° to core axis. Minor pyrite. Altered and bleached the last 5 feet to the contact with minor pyrite.				
371.5 - 400.5	GRAPHITE - Soft steel grey to black graphite. Numerous threads and narrow stringers of quartz and carbonate. Bedded from 50° to 70° to core axis. 5 - 10% pyrite in seams, threads and nodules.				



N.M.P., TORONTO-STOCK FORM NO. 501 REV. 12/51

DRILLED BY Continental D. D. Co. Ltd.

SIGNED H. D. McLeod P. Eng.

DIAMOND DRILL RECORD

PROPERTY _____ HOLE NO. 66-5

SHEET NUMBER 2 SECTION FROM _____ TO _____ STARTED _____

LATITUDE _____ DATUM _____ COMPLETED _____

DEPARTURE _____ BEARING _____ ULTIMATE DEPTH _____

ELEVATION _____ DIP _____ PROPOSED DEPTH _____

DEPTH FEET	FORMATION	SAMPLE NO.	WIDTH OF SAMPLE	GOLD & Copper	SLUDGE GOLD & Zinc	Silver
	375.5 - 385.0	1004	11.5	0.06	0.02	TR.
	385.0 - 400.5	1005	15.5	0.07	0.07	0.05
400.5 - 475.0	TALC ZONE - Altered flows (?). Mixture of talc, chlorite and carbonate. Soft, medium grained, dark to black in colour. From 436.0 - 468.0 = a section with numerous white rounded to angular phenocrysts to 3/8" in a medium grained dark grey ground mass. Mainly talc.					
475.0	END OF HOLE.					