



42809SW0008 63.778 BELFORD

010

3. 778

GROUND MAGNETOMETER SURVEY

NOVA and BELFORD TWP.

SUDBURY MINING DIVISION

GENERAL

A total of 173 claims were staked by C. C. Huston and Associates, 2001-80 Richmond St. West, in Nova, Belford, Montcalm and Strachan Townships, Sudbury Mining Division. These claims form a contiguous block.

The staking of the claims and the ground magnetometer survey were instigated by an aeromagnetic anomaly located in the area early in 1956. This survey is primarily a ground investigation of the magnetic anomalous area.

GROUND MAGNETOMETER SURVEY AREA

A total of 34 claims were covered by the ground magnetometer survey in Nova and Belford Townships.

The claims covered are:

S 94370 to S 94381 inclusive	12
S 94384 S 94385	2
S 94386 S 94389	2
S 94392 S 94393	2
S 94466 to S 94477 inclusive	10
S 97756 to S 97759 inclusive	4
	34

GROUND MAGNETOMETER SURVEY

This magnetometer survey was done under the direction of C. C. Huston and Associates, between May 24th and August 27th 1956.

The instrument used was a "Sharpe" vertical intensity magnetometer with a sensitivity of 22 gammas per scale division. In this survey 26.0 miles of picket lines and a total of 1476 stations were established.

GEOLOGY

The area is mainly flat spruce swamp with very little outcropping.

There is some small outcrops of coarse grained Keewatin flows in the north central part of the claim group, and a few outcrops of

Algonian granite along the south boundary of the claim group.

MAGNETICS

The contoured magnetic intensity data shows a maximum intensity of approximately 11,000 gammas over a fairly broad area, which has several small areas of maximum intensity. The magnetics are interpreted to be the magnetic expression of a basic or mafic rock type mass.

From the contour spacing of the magnetics it was believed that the overburden was quite deep in most parts of the property. Later, drilling confirmed this.

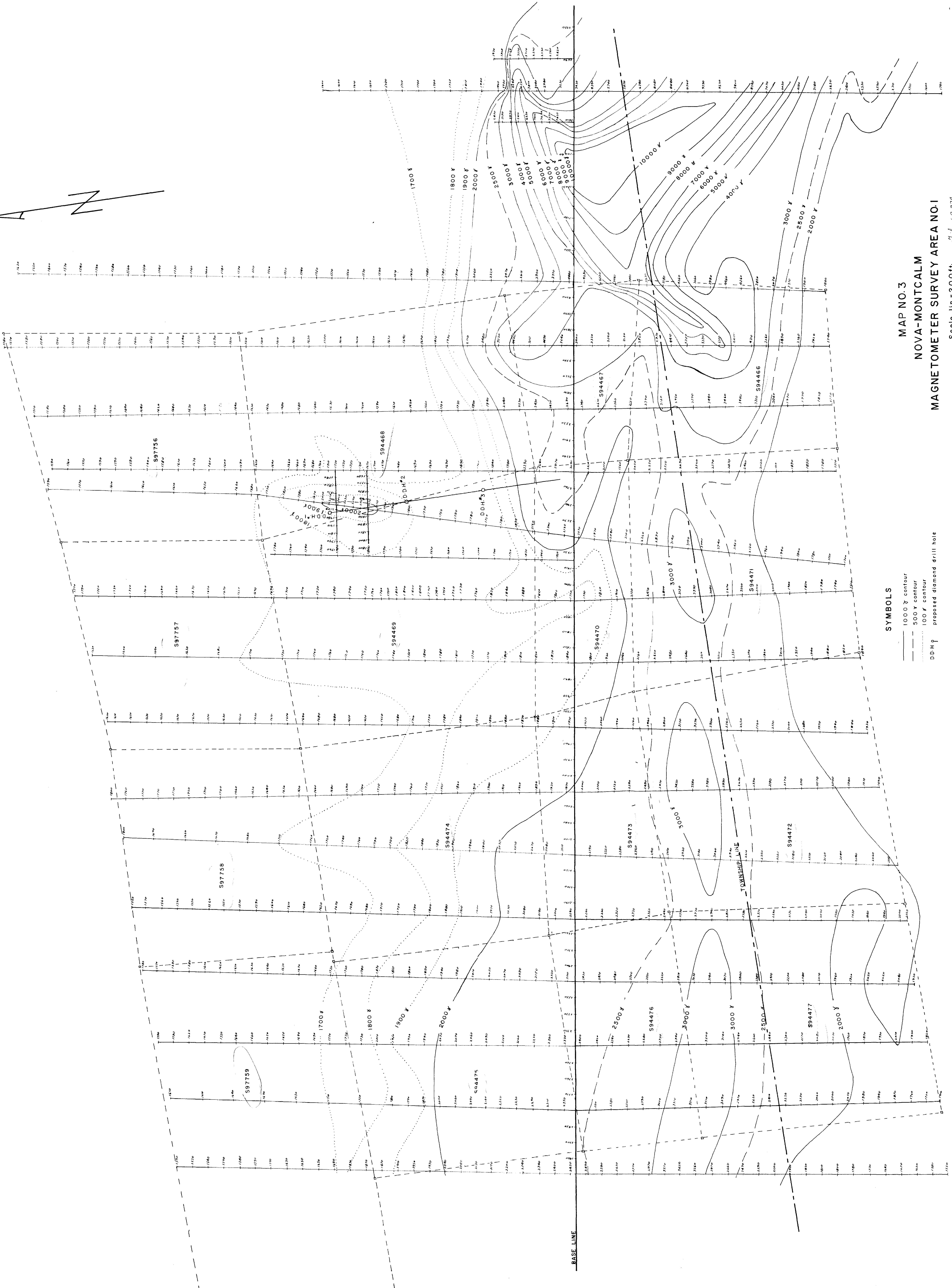
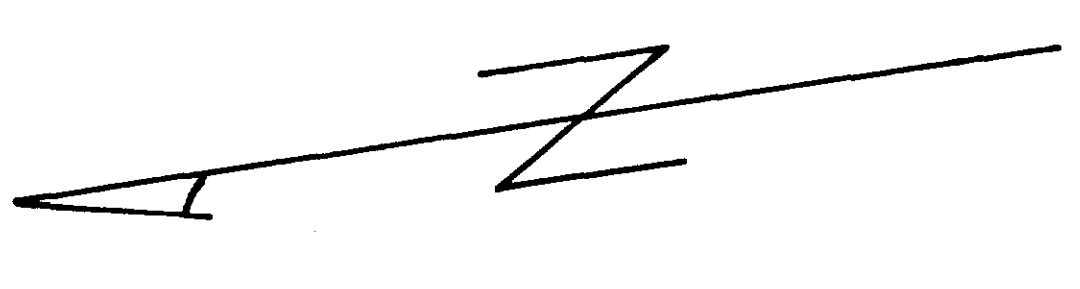
BREAKDOWN OF MAN-DAYS REQUIRED FOR SURVEY

a) Line Cutters

1. J. Poole, Bryson Quebec May 24th to June 9th	12 days
2. R. Contant, Fauquier Ontario July 11th to July 24th	12 days
3. G. Belanger, 6 McCamus Ave. Kirkland Lake, Ont. June 25th - August 27th	45 days
4. B. St.Pierre, 33 Kirkpatrick St. Kirkland L. Ont. June 25th to August 27th	44 days
5. M. Beauvais, Moonbeam Ontario July 11th to August 21st	36 days
6. L. Neron, Moonbeam Ontario July 17th to July 23rd.	6 days
7. D. Shave, 18 Murdoch St. Kapuskasing Ontario June 19th - August 20th	<u>25</u> days
TOTAL	180 days

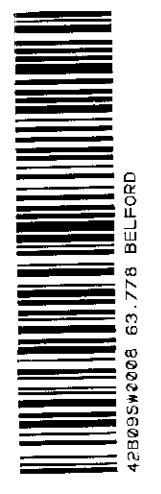
b) INSTRUMENT OPERATORS & TECHNICAL ASSISTANTS

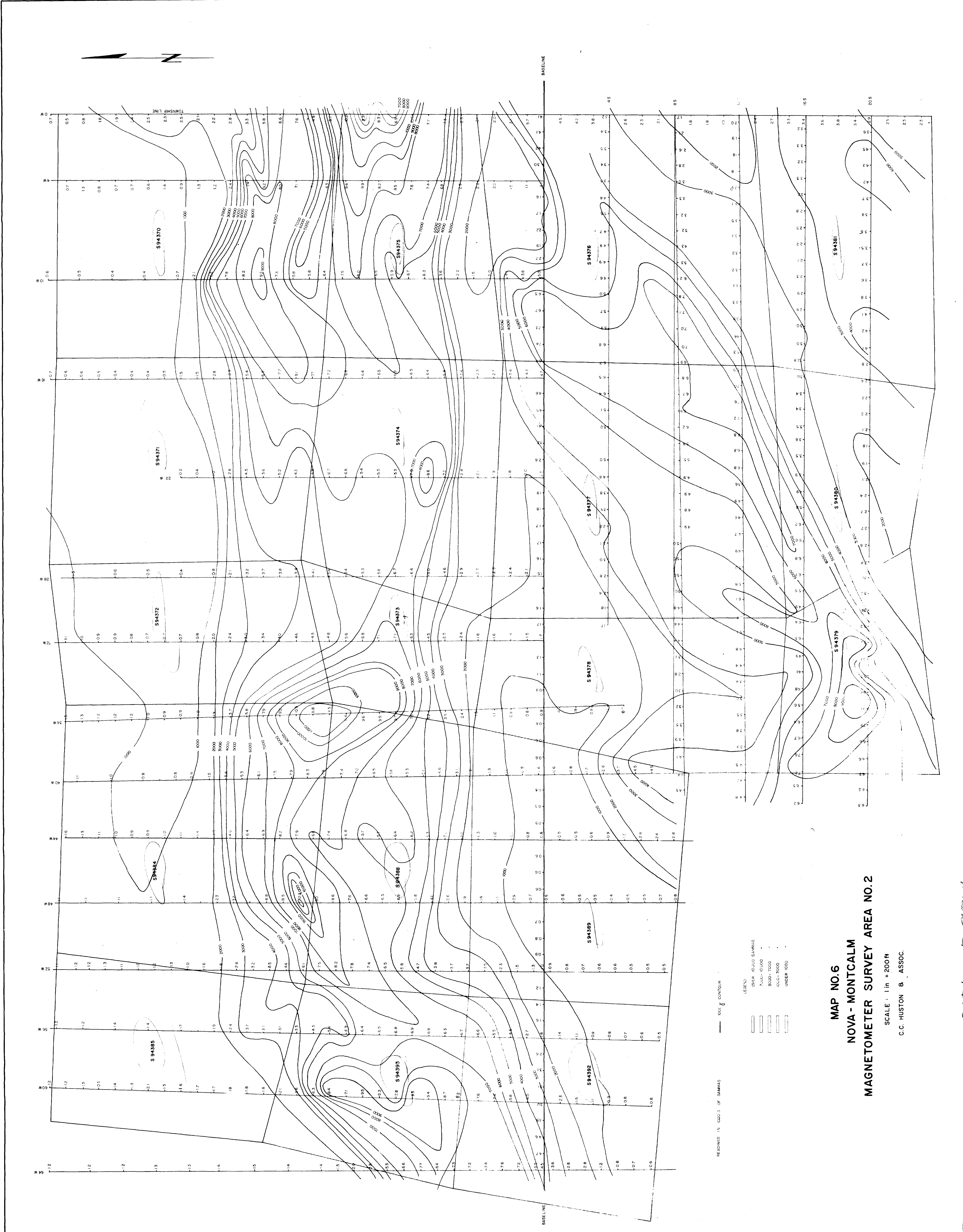
1. N. Firth 2001-80 Richmond St. West, Toronto, Ont. May 24th - August 27th	67 days
2. W. Tencate 2001-80 Richmond St. West, Toronto, Ont. May 25th - August 21st	65 days
3. D. Shave 18 Murdoch Street, Kapuskasing, Ont. June 19th - August 20th	<u>25</u> days
TOTAL	157 days



SYMBOLS
1000 γ contour
500 γ contour
100 γ contour
DDH # proposed diamond drill hole

MAP NO. 3
NOVA-MONTCALM
MAGNETOMETER SURVEY AREA NO. 1
Scale 1 in. = 200 ft. File 63778
C-C. Huston & Assoc.





MAP NO. 6
NOVA - MONTCALM
MAGNETOMETER SURVEY AREA NO. 2
SCALE: 1 in = 200 ft
C.C. HUSTON & ASSOC.

*Checked against N. Smith
P. By*