



42C03NW0025 42C03NW0017 ST. GERMAIN

010

PROSPECTING GEOPHYSICS LTD.

GEOPHYSICAL & GEOLOGICAL SURVEYS

70 CHISWELL CRESCENT, WILLOWDALE, ONTARIO M2N 6E1 • TEL. 416-226-2588

REPORT ON
GEOCHEMICAL SOIL SAMPLING SURVEY
ON PROPERTY OF
MACMILLAN ENERGY CORP., LTD.
MISHIBISHU LAKE AREA, ONTARIO

BY

PROSPECTING GEOPHYSICS LTD.

RECEIVED

MAR 27 1985

MINING LANDS SECTION

WILLOWDALE, ONTARIO

DECEMBER 30, 1985



42C03NW0025 42C03NW0017 ST. GERMAIN

010C

TABLE OF CONTENTS

	<u>PAGE</u>
INTRODUCTION	1
PROPERTY	2
PREVIOUS WORK	2
GEOLOGY	2
SURVEY METHODS AND PROCEDURE ...	4
RESULTS OF THE SURVEY	5
Plates 1 and 2	5
Plate 3	7
Plate 4	8
CONCLUSIONS AND RECOMMENDATIONS.	8

MAPS

Soil Geochemical Survey	
Western and Central Grids ..	Plate 1
Western and Central Grids ..	Plate 2
Central Grid.....	Plate 3
East Grid	Plate 4
Property - Geological Map	Fig. 3.

REPORT ON
GEOCHEMICAL SOIL SAMPLING SURVEY
ON PROPERTY OF
MACMILLAN ENERGY CORP., LTD.
MISHIBISHU LAKE AREA, ONTARIO

INTRODUCTION

A surface exploration program was carried out on the property of MacMillan Energy Corp. Ltd. in November-December, 1984. The program consisted of geochemical soil sampling and V.L.F. electromagnetic surveys in three separate areas of the property. The object of the program was to obtain targets for a diamond drilling program planned for 1985.

The results of the exploration are covered in the writer's report dated February 6, 1985, at which time, recommendations were made for the future exploration of the property. The program outlined some targets for further exploration south-east of the Westfield-Windarra ground, but no work had been done to investigate the area northwest of their property, where drilling had shown good gold values in the Magnacon zone. As a result, it was recommended that any investigation by diamond drilling on the MacMillan ground be deferred until Westfield completed their drilling and further exploration was carried out on the MacMillan property to investigate the northwest extension of the Westfield-Windarra shear zone.

A geochemical soil sampling survey has recently been completed, covering some 274 claims on the MacMillan property. This includes all of the claims to the west of the Westfield-Windarra property, where drilling is presently in progress by Muschocho Explorations Ltd. The following report and accompanying maps describe the results of the survey and provides recommendations for the further exploration of the property.

-2-

PROPERTY

The MacMillan Energy Corp. property originally consisted of 1,083 contiguous unpatented claims in the Mishibishu Lake area of Ontario. The ground on which the present and 1984 exploration programs have been conducted includes 340 claims, that completely surround the Muschoco-Westfield-Windarra holdings. The list of claims are shown in Appendix A.

The property is situated some 72 kilometres southeast of Hemlo, but is only about 40 kilometres west of the Trans-Canada Highway. Access and service are by fixed wing aircraft to Mishibishu Lake and helicopter from White River.

PREVIOUS WORK

Previous work on the MacMillan Energy property has consisted of airborne geophysical surveys followed by ground exploration programs in selected areas in the summers of 1983 and 1984. These latter programs included prospecting, sampling, geological mapping, geochemical soil sampling and electromagnetic surveys which outlined some targets for further exploration.

Considerable diamond drilling has now been completed on the 59 claim group referred to as the Westfield-Windarra property which is completely surrounded by the MacMillan claims. The results of this work have been very encouraging and there is every indication that the strong shear zone within which the gold-bearing zones occur, extends into the MacMillan ground both to the northwest and southeast. The latest results reported by Muschocho Explorations Ltd., the operator, shows a drill intersection of 1.04 oz. gold per ton over 4.5 feet within 1,600 feet (487 m) of their west boundary with MacMillan Energy's property.

GEOLOGY

The geology of the MacMillan property has been described in previous reports by the writer and is briefly described here

-3-

GEOLOGY (cont'd.)

for use in the interpretation of the results of the exploration program. The property of MacMillan Energy Corp. Ltd. is located within a northwest trending belt of early Precambrian Archean metavolcanic and metasedimentary rocks referred to as the Mishibishu Lake belt. The belt is intruded by both granitic and ultrabasic rocks. The rock types found on both the MacMillan and the 59 claim property now being explored by Westfield Minerals and Muschocho Explorations, includes a sequence of intermediate to basic metavolcanics overlain by felsic metavolcanic rocks. The felsic metavolcanics are normally tuffaceous with some interbedded argillaceous and other sediments. A fairly wide band of felsic metavolcanics interbedded with sediments extends across both the MacMillan and Westfield-Muschocho properties in a northwest direction.

Both the metasediments and the underlying metavolcanics have been intruded by basic and felsic intrusives. The most prominent intrusive in the vicinity of the MacMillan property is the Mishibishu Lake stock, which is a body of massive porphyritic monzonite covering an area of about 28 square kilometres. It intrudes the metasedimentary and metavolcanic assemblage around Mishibishu Lake, Mishi Lake, and Katzenbach Lake. The MacMillan property covers the north contact of the intrusive with the metasedimentary-metavolcanic rocks.

The metasedimentary-metavolcanic assemblage is favourable for both gold and base metal mineralization, but most of the exploration and discoveries have been for gold. The most significant discoveries in the area to-date are those north of the Mishibishu Lake on the 59 claim group which is completely surrounded by the MacMillan claims. The west block of 19 claims is now being developed by Muschocho Explorations Ltd., and the balance of 49 claims by Westfield Minerals Ltd.

GEOLOGY (cont'd.)

The gold mineralization found on the 59 claims group is associated with a major northwest striking shear zone that extends across the property for a length of 6,700 metres, with a width up to 760 metres. The shear zone is strong and quite continuous and almost certainly extends onto the MacMillan ground. As mentioned earlier, drilling by Muschocho Explorations Ltd. has obtained economic values within 487 metres of the MacMillan property.

The gold mineralization is found in quartz and quartz-carbonate veins, and also in pyritic cherty tuff units. Geological mapping on the MacMillan property has revealed outcrops that contain similar cherty tuffs with disseminated pyrite on the projected strike of the shear zone.

Drilling to-date on the Magnacon zone by Muschocho Explorations Ltd. has indicated that the gold bearing zone has a fairly flat dip to the north. The initial drill results extend to a depth of 500 feet but the zone is still open at depth and along strike in both directions.

SURVEY METHODS AND PROCEDURE

The soil sampling was carried out in three areas on the property, two of which are contiguous. The samples were taken along north-south lines at 200 metre intervals that have been blazed and flagged. The sample interval along the lines is 60 metres with the exception of a portion of the Western Grid where the lines were at 100 metre spacing and the samples at 25 metres.

The samples were taken of the "B" horizon where feasible but where this was not possible, a sample of the humus material was obtained. These were later dried and sieved to obtain a minus 80 mesh fraction and then sent to the assay laboratory for gold determinations. The analysis was carried out by fire assaying, using the aqua regia extraction method and the results

-5-

SURVEY METHODS AND PROCEDURE (cont'd.)

are reported in parts per billion. The lower detection limit for a 10 gram sample is 5 ppb and anything less than 5 ppb is reported as <5.

The Western and Central Grids that are contiguous use a common base line (Base line 0) that was cut and chained for a length of some 9,400 metres. However, the surveys on each grid were carried out independently and use two different systems for numbering the lines. The Western Grid has line numbers from L0, L65E etc., to L780E and L65W etc., to L1170W. The Central Grid starts at L0 north of the base line and the line numbers are L7E, L14E etc., to L308E.

RESULTS OF THE SURVEY

The soil sampling survey was of a reconnaissance nature due to the extensive coverage. As mentioned previously, the work was carried out in three areas and these are referred to as the West, Central and East Grids. The West and Central Grids are contiguous but the East Grid is in a separate area adjacent to the 1984 grid, as shown on the key map.

The results are plotted on four separate but contiguous maps on a scale of 1:5000 and only results of 5 ppb or higher are shown on the maps. All other values are below the limit of detection and only the sample location is shown on the map. In addition to the four maps referred to as Plates 1, 2, 3 and 4, a geological map of the property (Fig. 3) is included and the areas covered by the surveys carried out in 1985 and 1984 are shown. Approximate locations of all geochemical anomalies found in the surveys are shown on this map and these are discussed below.

Plates 1 and 2

Plate 1 covers most of the area west of the Muschocho-Westfield-Windarra holdings, while Plate 2 covers the area

Plates 1 and 2 (cont'd.)

surveyed north and south of their holdings. There are a number of very interesting geochemical anomalies on these maps, particularly in the areas immediately west and south of the Muschocho ground where drilling of the Magnacon zone has been underway.

The major anomalous area is on claims 601822 and 601823 starting at line 0 and extending eastward to the boundary with the Muschocho ground, a distance of about 1,000 metres. There would appear to be several parallel zones, but the values are not continuous. This area is surveyed using line spacing at 100 metres and the sampling interval is 25 metres. Values range from 10 to 720 ppb and there are numerous values over 100 ppb, so it would appear that the gold-bearing zone that exists on the Muschocho ground extends onto the MacMillan property. Further west, on the MacMillan property on line 195W, there is a high of 2100 ppb which is on strike with the above zone, but another 600 metres west. This would be in the vicinity of a surface gold assay of 0.06 oz. gold per ton. (See Fig. 3)

Further to the south on Plate 1, some rather continuous and high values were found on line 260W. These range from 10 to 2000 ppb and cover a width of over 500 metres. Nothing was found on either side of this, but one must remember that the line spacing here is 200 metres. The values appear to be in the vicinity of a creek that actually comes from the Muschocho ground, and the creek also goes through another anomalous area on the MacMillan ground, south of the Muschocho property. There is thus the possibility that these values have been transported by the creek.

Another strong anomalous area is shown on Plate 2 south and west of the Muschocho ground. Anomalous values are found at the north ends of lines 650E, 715E and 780E in claim 601742.

-7-

Plates 1 and 2 (cont'd.)

This is very close to the boundary of the Muschocho property and would appear to represent something separate from their drill indicated zones. Further south on line 215E there is a wide area of anomalous values up to 1740 ppb, but the lines immediately west have little in the way of anomalous values. However, on line 390E, some 900 metres to the west, some further values are found along the projected strike. This is in the vicinity of known surface gold values and a northeast striking fault zone, thus making a favourable geological environment.

The western part of Plate 1 and the northern portion of Plate 2 show only isolated anomalous values and thus, without more detailed work, it is difficult to assess their significance. On line 161E in claim 601765, a value of 275 ppb was obtained north of the Westfield ground, but the potential of this ground is the down-dip extension of the gold-bearing zones outlined in both the Muschocho and Westfield drilling. Diamond drilling has shown that the zones dip quite flatly to the north and thus could extend onto the MacMillan ground at a reasonable depth.

Plate 3

This map covers the area immediately east of Plate 2, which is the balance of the Central Grid, which covers the ground north of the Westfield property. The map also covers part of the area surveyed in 1984, the results of which are shown on Plate 1S Mishi Lake, 1984. (See Fig. 3)

Only isolated values were found in this part of the 1985 survey, such as on line 273E, claim 601727, with a value of 90 ppb. On line 182E at the north end, a value of 1295 ppb was obtained, but this appears to be off the property.

Plate 4

This map covers the East Grid which is located some 3,600 metres southeast of the Westfield-Windarra holdings and is immediately southeast of the work carried out in 1984 on the Mishi grid - Plate 2S (See Fig. 3) The survey in 1984 outlined some anomalous values along the projected strike of the Westfield gold-bearing zone as shown on Fig. 3.

The present survey on the East grid has encountered some rather interesting values in the south-central portion of claims 644679 and 661005. Anomalous values with a high of 2870 ppb were obtained on two lines 200 metres apart. Line 49 has a series of anomalous values and since the samples are at 60 metre intervals, this is fairly significant. The trend of the anomaly appears to be northwest and there are a few scattered values above background further northwest but they are rather isolated. The geological location of this anomaly appears to be at the southwest end of a narrow band of felsic metavolcanics and about 400 metres west of a gold occurrence (See Fig. 3) This is on the general trend of other geochemical anomalies picked up in previous surveys and would be within the projected extension of the favourable horizon extending through the Muschocho-Westfield holdings.

The other anomalous area is further to the east and contains mostly low values but one sample gave 1780 ppb. This, again, appears to be related to a lens of felsic meta-volcanics.

CONCLUSIONS AND RECOMMENDATIONS

The geochemical soil sampling program recently completed has been successful in outlining several areas of potential gold-bearing zones. These results, combined with those of the 1984 program, clearly indicate that the favourable gold-bearing horizon that crosses the Muschocho-Westfield holdings, extends onto the MacMillan property, both to the northwest

-9-

CONCLUSIONS AND RECOMMENDATIONS (cont'd.)

and southeast. This is particularly noticeable to the west of the Muschocho ground where anomalous values are found along strike for over 1000 metres. Since this is the area that economic gold values have been obtained in drilling on the Muschocho ground within 250 metres of the MacMillan boundary, the anomalous values are particularly significant.

In addition to the anomalies along the strike of the Muschocho-Westfield zone, there are other significant anomalies on the MacMillan property that suggest new gold-bearing zones. The most important area is just south of the Muschocho ground where anomalous values are found in a favourable geological environment and there is some known gold mineralization.

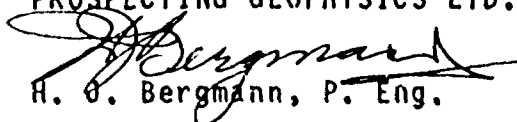
Another significant area is in the southern part of the MacMillan ground where soil sampling gave good values in the vicinity of a creek. All of these areas warrant further investigation.

Diamond drilling is recommended for the area immediately west of the Muschocho ground, which could consist initially of a north-south cross-section. The cross-section should be located after correlating the geochemical results with available information from Muschocho Explorations Ltd.

The second area that is a potential drill target is that to the south of the Muschocho ground. However, prior to drilling here, it is important that the property boundary be accurately determined and again, correlation with available data on the Muschocho ground is important.

It is recommended that the other anomalies be investigated by prospecting and geological examination as it is quite possible some of them could be explored initially by trenching.

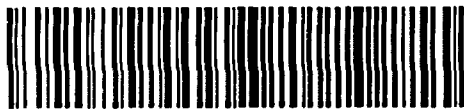
Respectfully submitted,
PROSPECTING GEOPHYSICS LTD.


H. O. Bergmann, P. Eng.

Willowdale, Ontario
December 30, 1985

APPENDIX AList of Claims Covered in 1984 & 1985 Exploration Programs

SSM 601900
SSM 629242 TO 629239
SSM 629245
SSM 601601 to 601612
SSM 601628 to 601639
SSM 601655 to 601666
SSM 601674 to 601685
SSM 601689 to 601782
SSM 601784 to 601836
SSM 722575 to 722590
SSM 644598 to 644599
SSM 644601 to 644604
SSM 644608 to 644610
SSM 644616 to 644618
SSM 644600
SSM 644605 to 644607
SSM 601882 to 601897
SSM 601839 to 601858
SSM 601861 to 601879
SSM 644648 to 644661
SSM 644663 to 644681
SSM 661003 to 661005
SSM 661008 to 661010
SSM 661051 to 661052
SSM 661056 to 661057
SSM 661061 to 661062
SSM 661066 to 661067
SSM 661071 to 661072
SSM 661080
SSM 661088 to 661089



42C03NW0025 42C03NW0017 ST. GERMAIN

900

File _____



Ontario

Ministry of Natural Resources

GEOPHYSICAL - GEOLOGICAL - GEOCHEMICAL
TECHNICAL DATA STATEMENT

TO BE ATTACHED AS AN APPENDIX TO TECHNICAL REPORT
FACTS SHOWN HERE NEED NOT BE REPEATED IN REPORT
TECHNICAL REPORT MUST CONTAIN INTERPRETATION, CONCLUSIONS ETC.

Type of Survey(s) Geochemical Soil Sampling
Township or Area Mishibishu Lake Area and St. Germain
Claim Holder(s) MacMillan Energy Corp. Ltd.

Survey Company Prospecting Geophysics Ltd.
Author of Report H. J. Bergmann, P. Eng.
Address of Author 70 Chiswell Crescent Willowdale, Ont M2N 6E1
Covering Dates of Survey Sept. 18-Dec. 30, 1985
(linecutting to office)
Total Miles of Line Cut 31.8

MINING CLAIMS TRAVERSED
List numerically

(prefix) (number)

See attached list

SPECIAL PROVISIONS
CREDITS REQUESTED

DAYS
per claim

ENTER 40 days (includes
line cutting) for first
survey.

ENTER 20 days for each
additional survey using
same grid.

- Geophysical
 - Electromagnetic _____
 - Magnetometer _____
 - Radiometric _____
 - Other _____
- Geological _____
- Geochemical _____

AIRBORNE CREDITS (Special provision credits do not apply to airborne surveys)

Magnetometer _____ Electromagnetic _____ Radiometric _____
(enter days per claim)

DATE DEC. 30, 1985 SIGNATURE [Signature]
Author of Report or Agent

Res. Geol. _____ Qualifications _____

Previous Surveys

File No.	Type	Date	Claim Holder

TOTAL CLAIMS 290

OFFICE USE ONLY

If space insufficient, attach list

GEOPHYSICAL TECHNICAL DATA

GROUND SURVEYS - If more than one survey, specify data for each type of survey

Number of Stations 4,990 Number of Readings 4,899
Station interval 25 m and 60 m Line spacing 100 m and 200 m
Profile scale
Contour interval

MAGNETIC
Instrument
Accuracy - Scale constant
Diurnal correction method
Base Station check-in interval (hours)
Base Station location and value

ELECTROMAGNETIC
Instrument
Coil configuration
Coil separation
Accuracy
Method: [] Fixed transmitter [] Shoot back [] In line [] Parallel line
Frequency (specify V.L.F. station)
Parameters measured

GRAVITY
Instrument
Scale constant
Corrections made
Base station value and location
Elevation accuracy

INDUCED POLARIZATION RESISTIVITY
Instrument
Method [] Time Domain [] Frequency Domain
Parameters - On time Frequency
- Off time Range
- Delay time
- Integration time
Power
Electrode array
Electrode spacing
Type of electrode

GEOCHEMICAL SURVEY - PROCEDURE RECORD

Numbers of claims from which samples taken See attached list

Total Number of Samples 4945

Type of Sample Clay and humous
(Nature of Material)

Average Sample Weight 10 grams

Method of Collection Hand augur

Soil Horizon Sampled "B"

Horizon Development _____

Sample Depth 20 cm.

Terrain Slightly rugged with some
swampy areas.

Drainage Development _____

Estimated Range of Overburden Thickness 0-10m.

SAMPLE PREPARATION

(Includes drying, screening, crushing, ashing)

Mesh size of fraction used for analysis 80

General _____

ANALYTICAL METHODS

Values expressed in: per cent
p. p. m.
p. p. b.

Cu, Pb, Zn, Ni, Co, Ag, Mo, As, (circle)

Others Gold

Field Analysis (_____ tests)

Extraction Method _____

Analytical Method _____

Reagents Used _____

Field Laboratory Analysis

No. (_____ tests)

Extraction Method _____

Analytical Method _____

Reagents Used _____

Commercial Laboratory (_____ tests)

Name of Laboratory Bondar-Clegg

Extraction Method Aqua Regia

Analytical Method Fire Assay

Reagents Used _____

General _____

LIST OF CLAIMS

CLAIM NUMBERS

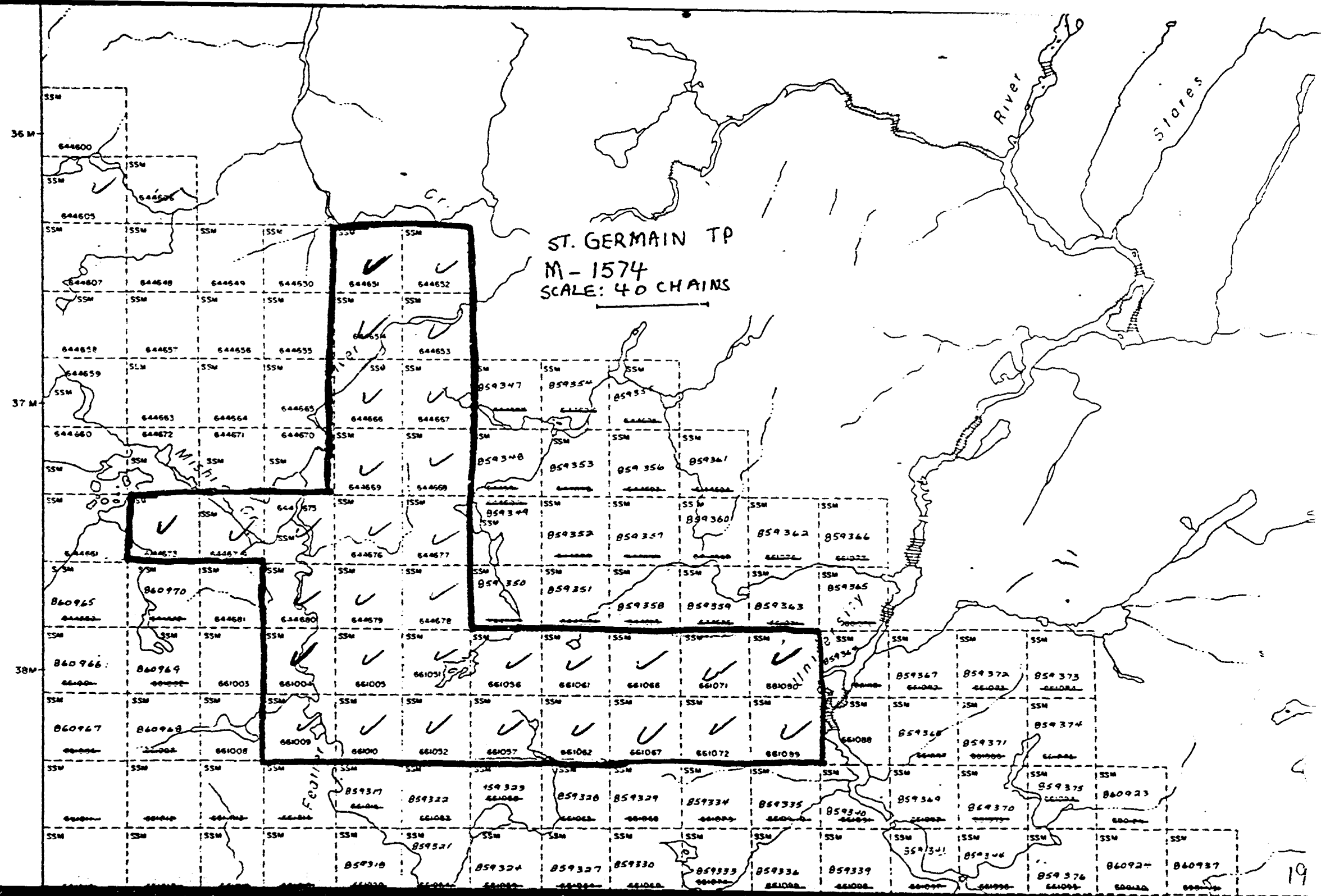
NUMBER OF CLAIMS

/ SSM644596 to 644599	2
/ 601601 to 601612	12
/ 601628 to 601639	12
/ 601655 to 601666	12
/ 601674 to 601685	12
/ 601689 to 601761	73
/ 601763 to 601782	20
/ 601784 to 601824	41
/ 601827 to 601836	10
/ 601839 to 601858	20
/ 601861 to 601879	19
/ 601882 to 601897	16
/ 601900	1
722580 to 722582 (40 days Geuchem. already approved)	3
/ 629238 to 629239	2
/ 629242 to 629243	2
/ 629245	1

TOTAL NUMBER OF CLAIMS:

258

- 3
255

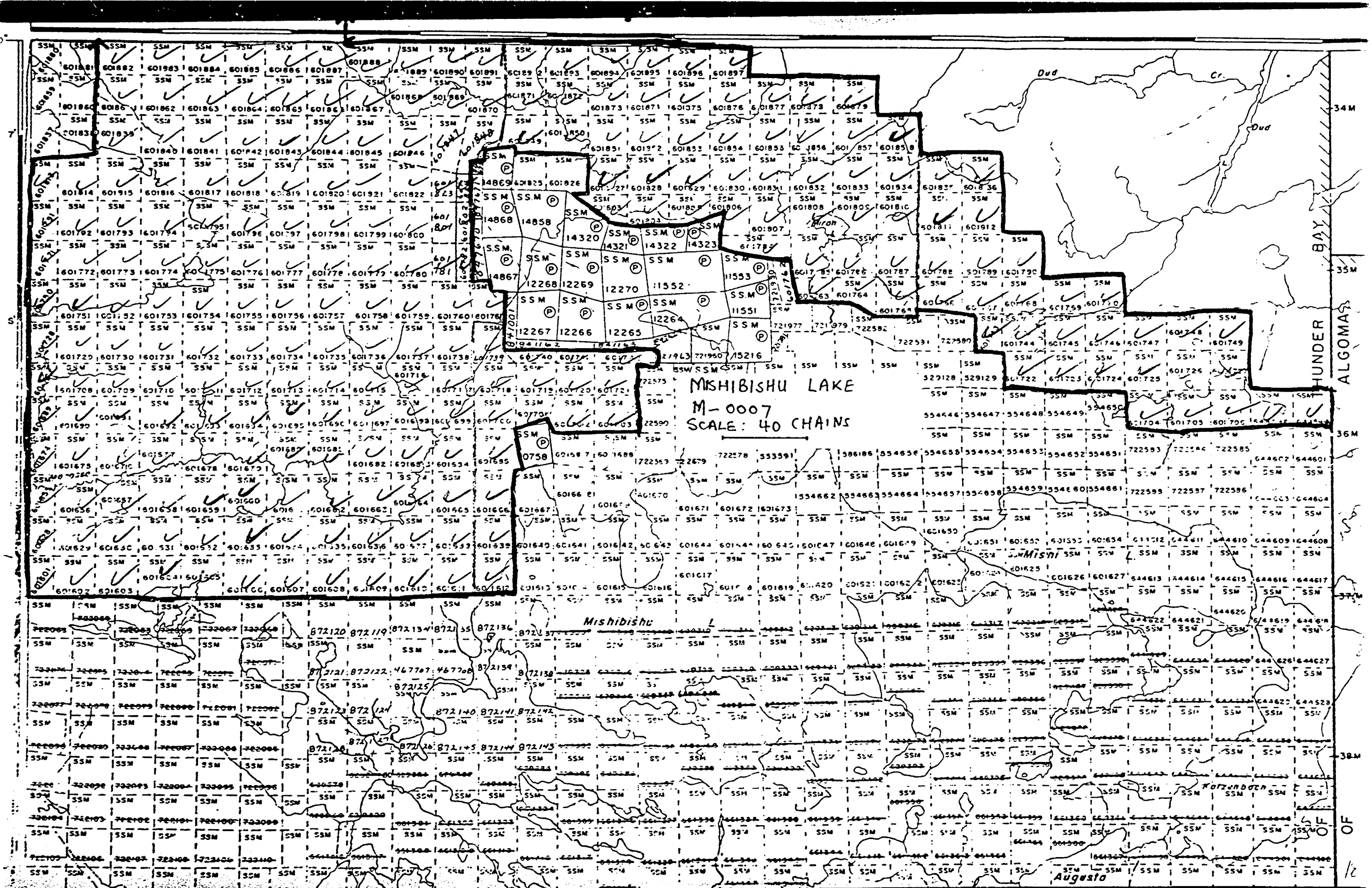


ST. GERMAIN TP
M-1574
SCALE: 40 CHAINS

36 M

37 M

38 M



MISHIBISHU LAKE
M-0007
SCALE: 40 CHAINS

Dud Cr.

HUNTER BAY ALGOMA

Mishibishu

Augusta



Ministry of Northern Affairs and Mines

Report of Work (Geophysical, Geological, Geochemical and Expenditures)

#33-86

28993

Instructions: - Please type or print. - If number of mining claims traversed exceeds space on this form, attach a list. Note: - Only days credits calculated in the "Expenditures" section may be entered in the "Expend. Days Cr." columns. - Do not use shaded areas below.

R.P. May 21.

Mining Act

Form header with fields: Type of Survey(s) Geochemical Soil Sampling, Township or Area St. Germain, Claim Holder(s) MacMillan Energy Corp. Ltd., Address Suite 810 - 625 Howe Street, Vancouver, B.C., Survey Company Prospecting Geophysics Ltd., Date of Survey (from & to) 15 Day, 10 Mo., 85 Yr. to 9 Day, 11 Mo., 85 Yr., Total Miles of line Cut 7.8, Name and Address of Author (of Geo-Technical report) H. J. Bergmann, 70 Chiswell Crescent, Willowdale, Ontario M2N 6E1

Special Provisions table with columns: Special Provisions, Geophysical, Days per Claim, Geological, Geochemical. Includes Man Days section with 'RECEIVED' stamp and 'MINING LANDS SECTION' stamp.

Mining Claims Traversed table with columns: Mining Claim (Prefix, Number), Expend. Days Cr. Lists claim numbers from 644651 to 661067.

SAULT STE MARIE MINING DIV. RECEIVED APR 1 1986 stamp

Expenditures (excludes power stripping) section with fields for Type of Work Performed, Calculation of Expenditures Days Credits, and Instructions.

Total number of mining claims covered by this report of work. 32

Date Feb. 10, 1986 and Recorded Holder or Agent (Signature) field.

For Office Use Only section with fields for Total Days Cr. Recorded, Date Recorded, Date Approved as Recorded, Mining Recorder, and Branch Director.

Certification Verifying Report of Work: I hereby certify that I have a personal and intimate knowledge of the facts set forth in the Report of Work annexed hereto, having performed the work or witnessed same during and/or after its completion and the annexed report is true.

Name and Postal Address of Person Certifying: H. J. Bergmann, 70 Chiswell Crescent, Willowdale, Ontario M2N 6E1. Date Certified: Feb. 10, 1986. Certified by (Signature): H. J. Bergmann.

Assessment Work Breakdown

Man Days are based on eight (8) hour Technical or Line-cutting days. Technical days include work performed by consultants, draftsmen, etc..

Type of Survey						
Geochemical Soil Sampling						
Technical Days	X	7	=	Technical Days Credits	+	Line-cutting Days
113				791		11
			=	Total Credits	+	No. of Claims
				802		32
			=			
				Days per Claim		
				25		

Type of Survey						
Technical Days	X	7	=	Technical Days Credits	+	Line-cutting Days
<input type="text"/>				<input type="text"/>		<input type="text"/>
			=	Total Credits	+	No. of Claims
				<input type="text"/>		<input type="text"/>
			=			
				Days per Claim		
				<input type="text"/>		

Type of Survey						
Technical Days	X	7	=	Technical Days Credits	+	Line-cutting Days
<input type="text"/>				<input type="text"/>		<input type="text"/>
			=	Total Credits	+	No. of Claims
				<input type="text"/>		<input type="text"/>
			=			
				Days per Claim		
				<input type="text"/>		

Type of Survey						
Technical Days	X	7	=	Technical Days Credits	+	Line-cutting Days
<input type="text"/>				<input type="text"/>		<input type="text"/>
			=	Total Credits	+	No. of Claims
				<input type="text"/>		<input type="text"/>
			=			
				Days per Claim		
				<input type="text"/>		

[Faint, illegible text or stamp, possibly a date or reference number]

Assessment Work Breakdown

Man Days are based on eight (8) hour Technical or Line-cutting days. Technical days include work performed by consultants, draftsmen, etc..

Type of Survey

Geochemical Soil Sampling

Technical Days		Technical Days Credits		Line-cutting Days		Total Credits		No. of Claims		Days per Claim		
1128	X	7	=	7896	+	116	=	8,012	+	258	=	31

Type of Survey

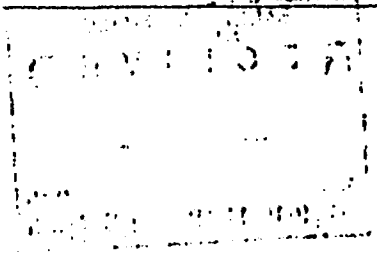
Technical Days		Technical Days Credits		Line-cutting Days		Total Credits		No. of Claims		Days per Claim		
	X	7	=		+		=		+		=	

Type of Survey

Technical Days		Technical Days Credits		Line-cutting Days		Total Credits		No. of Claims		Days per Claim		
	X	7	=		+		=		+		=	

Type of Survey

Technical Days		Technical Days Credits		Line-cutting Days		Total Credits		No. of Claims		Days per Claim		
	X	7	=		+		=		+		=	



LIST OF CLAIMS

CLAIM NUMBERS

NUMBER OF CLAIMS

/ SSM 644598 to 644599	2
/ 601601 to 601612	12
/ 601628 to 601639	12
/ 601655 to 601666	12
/ 601674 to 601685	12
/ 601689 to 601761	73
/ 601763 to 601782	20
/ 601784 to 601824	41
/ 601827 to 601836	10
/ 601839 to 601858	20
/ 601861 to 601879	19
/ 601882 to 601897	16
/ 601900	1
722580 to 722582 (40 days Geuchemico! already approved)	3
/ 629238 to 629239	2
/ 629242 to 629243	2
/ 629245	1

TOTAL NUMBER OF CLAIMS:

258

- 3

255

H. J. BERGMANN, P. ENG.
MINING ENGINEER

70 CHISWELL CRESCENT
WILLOWDALE, ONTARIO
M2N 6E1

TELEPHONE:(416) 226-2388

March
February 20, 1986

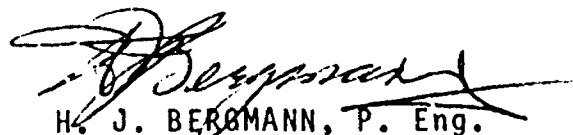
Mr. S. E. Yundt, Director
Land Management Branch
Whitney Block-Queen's Park
Room 6643
Toronto, Ontario
M7A 1W3

Dear Mr. Yundt:

Enclosed you will find two copies of the report and maps covering geochemical soil sampling surveys carried out on the property of MacMillan Energy Corp. Ltd. in the Mishibishu Lake area.

The work has been filed with the Mining Recorder at Sault Ste. Marie, Ontario. If there is any further information required, please let me know.

Yours very truly,


H. J. BERGMANN, P. Eng.

HJB:bss
Encls.

RECEIVED
MAR 27 1986
MINING LANDS SECTION

April 4, 1986

File: 2.8993

Mining Recorder
Ministry of Northern Development and Mines
875 Queen Street East
Box 669
Sault Ste. Marie, Ontario
P6A 2B3

Dear Madam:

We received reports and maps on March 27, 1986 for a Geochemical Survey submitted under Special Provisions (credit for Performance and Coverage) on Mining Claims SSH 601900, et al, in the Area of Mishibishu Lake and St. Germain.

This material will be examined and assessed and a statement of assessment work credits will be issued.

We do not have a copy of the report of work which is normally filed with your office prior to the submission of this technical data. Please forward a copy as soon as possible.

Yours sincerely,

J.C. Smith, Supervisor
Mining Lands Section

Whitney Block, 6th Floor
Queen's Park
Toronto, Ontario
M7A 1W3

Telephone: (416) 965-4888

AB/mc

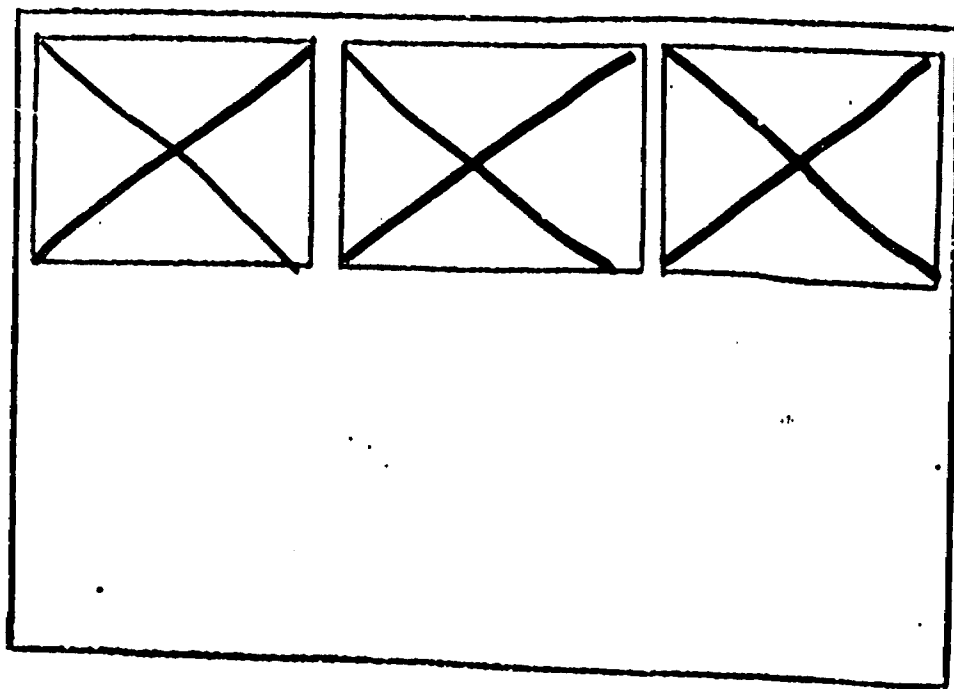
cc: MacMillan Energy Corp.
Suite 810
625 Howe Street
Vancouver, B.C.
V6C 2T6

H.J. Bergmann
70 Chiswell Crescent
Willowdale, Ontario
M2N 6E1

• SEE ACCOMPANYING
MAP(S) IDENTIFIED AS

42C/03 NW-0017 #1-2

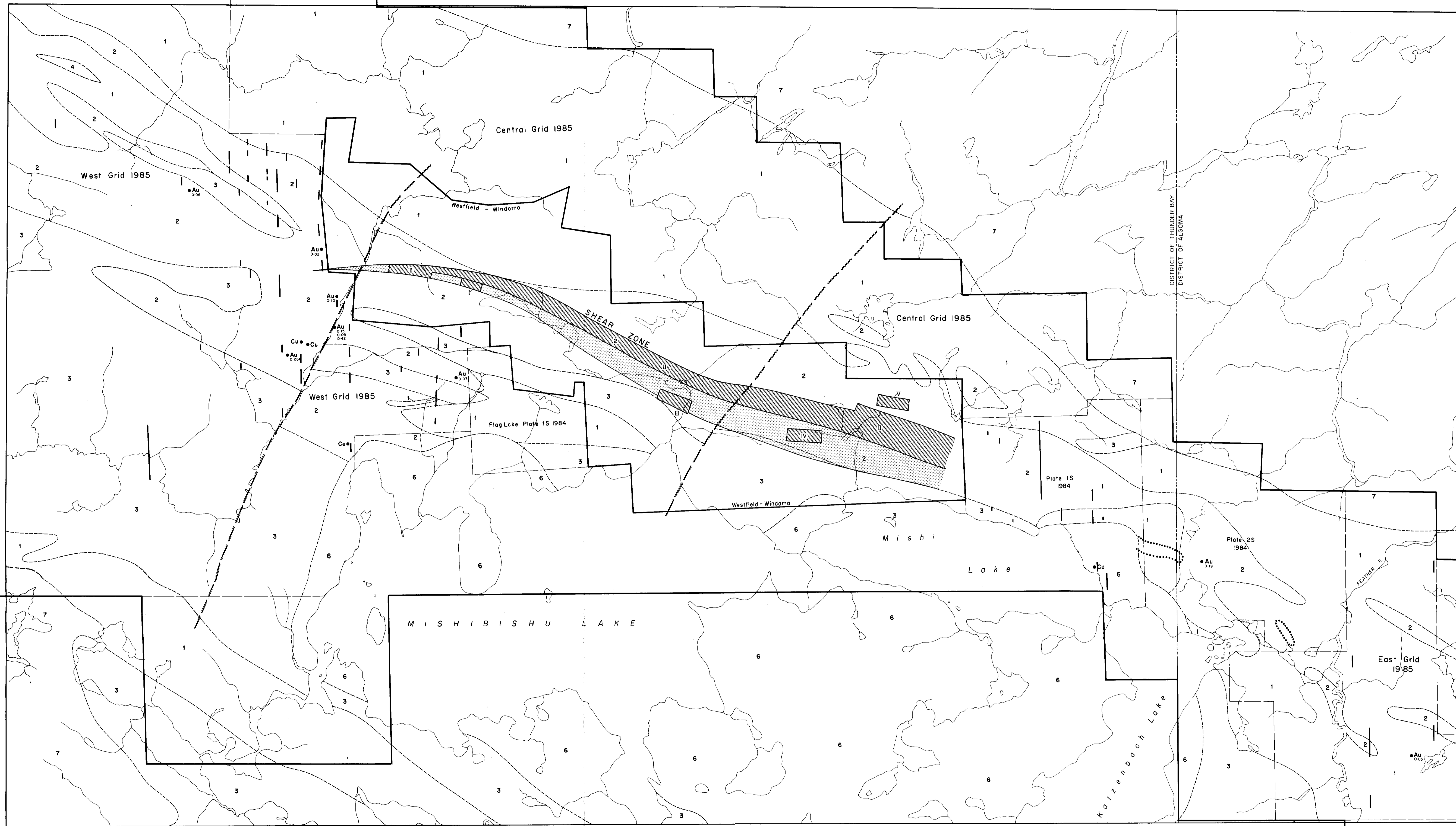
LOCATED IN THE MAP
CHANNEL IN THE FOLLOWING
SEQUENCE (X)



FOR ADDITIONAL
INFORMATION

SEE MAPS:

42C/03NW-0017 #3-5



LEGEND

- | | | | |
|---|-------------------------------------|----------|-------------------------------|
| 7 | BATHOLITHIC GRANITIC ROCKS | [Symbol] | ASSUMED FAULT |
| 6 | PORPHYRITIC MONZONITE | [Symbol] | GEOLOGICAL CONTACT |
| 4 | POLYMICITIC CONGLOMERATE | Au | GOLD MINERALIZATION |
| 3 | METASEDIMENTS | 0.10 | GOLD VALUES Oz Au/ton |
| 2 | FELSIC METAVOLCANICS | Cu | COPPER MINERALIZATION |
| 1 | MAFIC TO INTERMEDIATE METAVOLCANICS | [Symbol] | GEOCHEMICAL ANOMALY 1983 |
| | | [Symbol] | GEOCHEMICAL ANOMALY 1984-1985 |

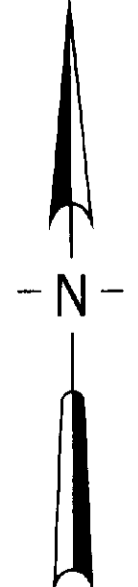
NOTE:

Westfield - Windarra Shear Zone etc.
 taken from map published in the
 Northern Miner Sept. 13-1984

KNOWN GOLD OCCURRENCES ON
 WESTFIELD - WINDARRA

I MAGNACON
 II NORTHWEST
 III AMICHI
 IV HOLLINGER
 V DISCOVERY

42c/03 NW-0017 #1



DRAWN BY
 WILLIAM JAMAL and ASSOCIATES LTD.

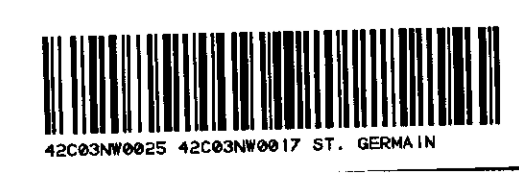
18993

MACMILLAN ENERGY CORPORATION

MISHIBISHU LAKE AREA
 SAULT STE MARIE MINING DIVISION

PROPERTY - GEOLOGICAL MAP

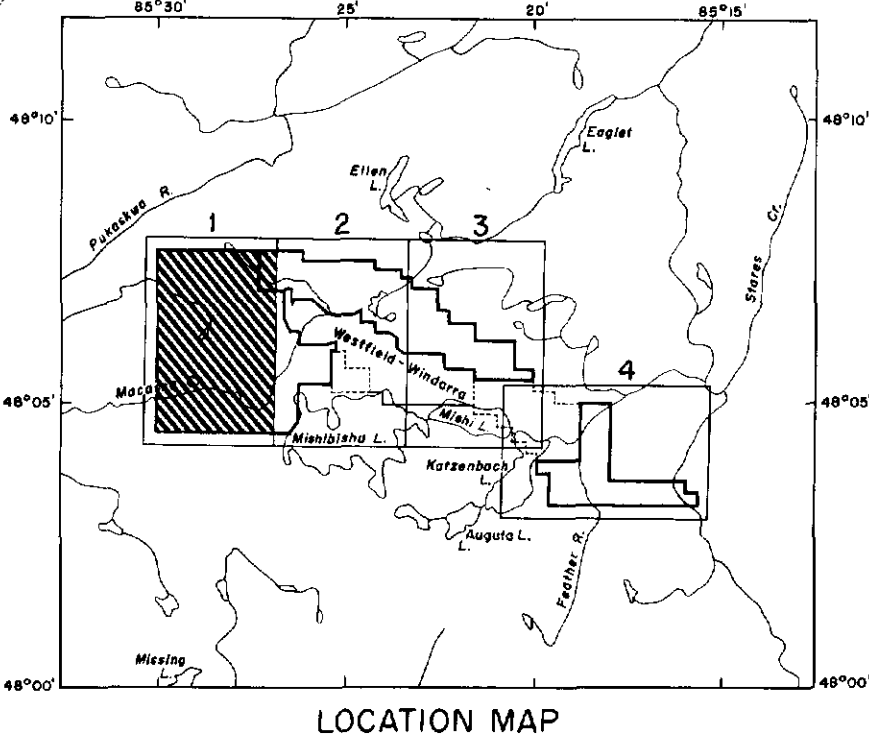
<i>W. J. Jamal</i>	DATE DECEMBER 1984
SCALE 1" = 1320 feet	FIGURE 3



MACMILLAN ENERGY CORPORATION
 MISHIBISHU LAKE AREA
 SAULT STE MARIE MINING DIVISION
 WEST and CENTRAL GRID
 SOIL GEOCHEMICAL SURVEY

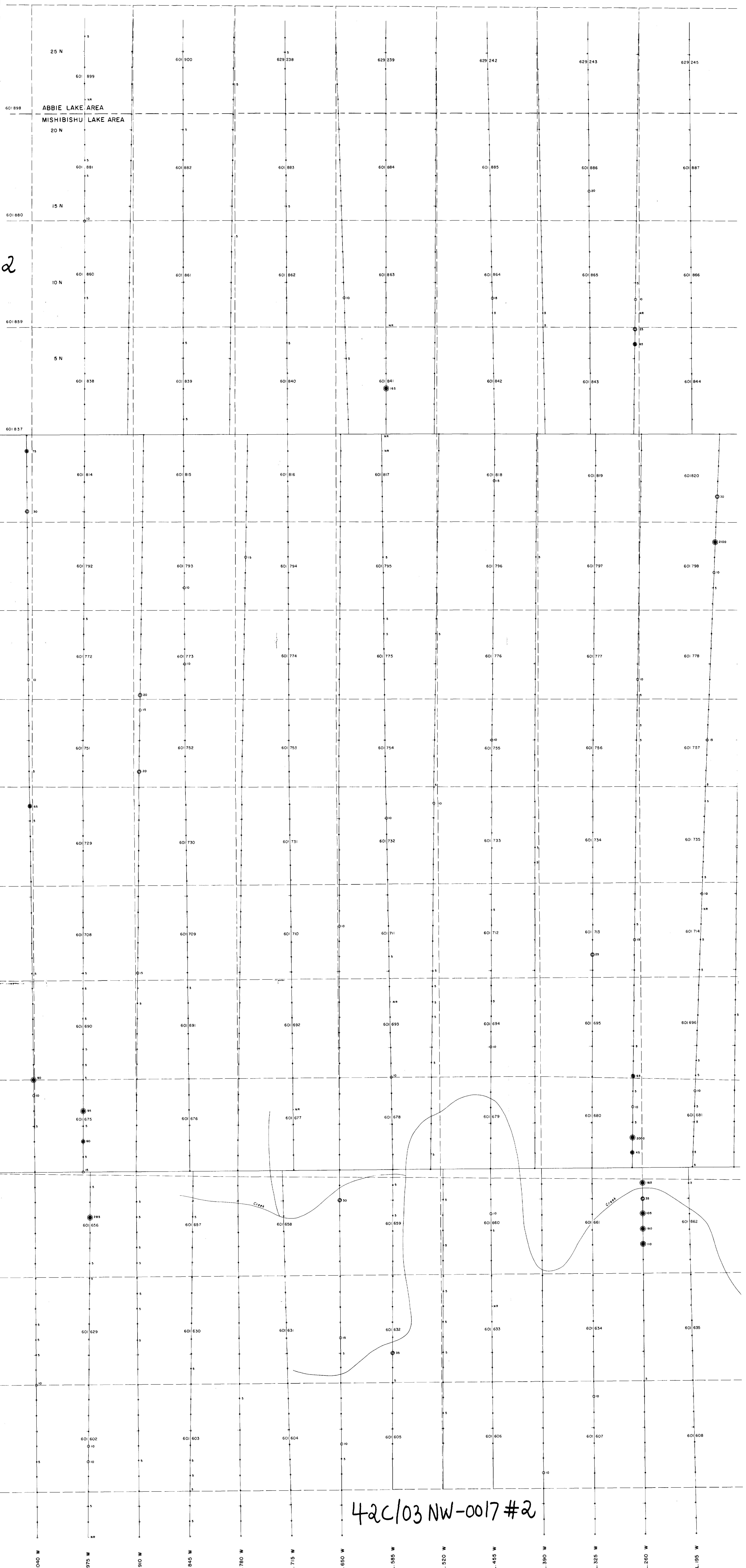
Served by: PROSPECTING GEOPHYSICS LTD. INT. S. No. 42 C/3 Date: Oct Nov - 1985
 Scale: 1:5,000 PLATE 1

Stegman
 21514/85
 2893

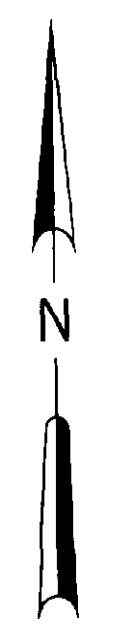


42c/03 NW-0017 #2

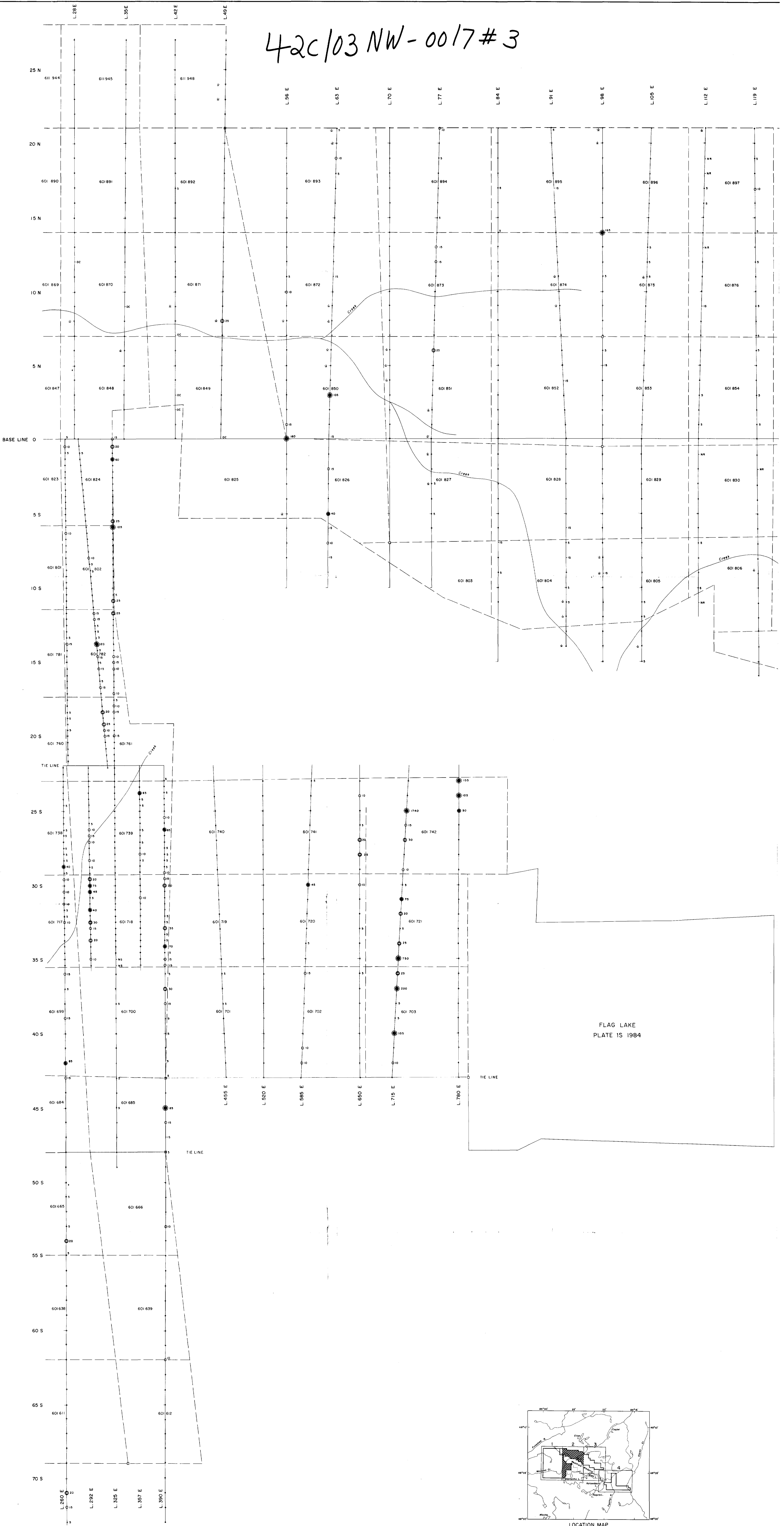
LEGEND
 Circle only indicates value is less than five (C.S. ppb).....
 5-9 ppb ○
 10-19 ppb ○
 20-39 ppb ○
 40-79 ppb ○
 80 ppb+ over ●
 OUTCROP DC
 NO READING NR
 INSUFFICIENT SAMPLE IS



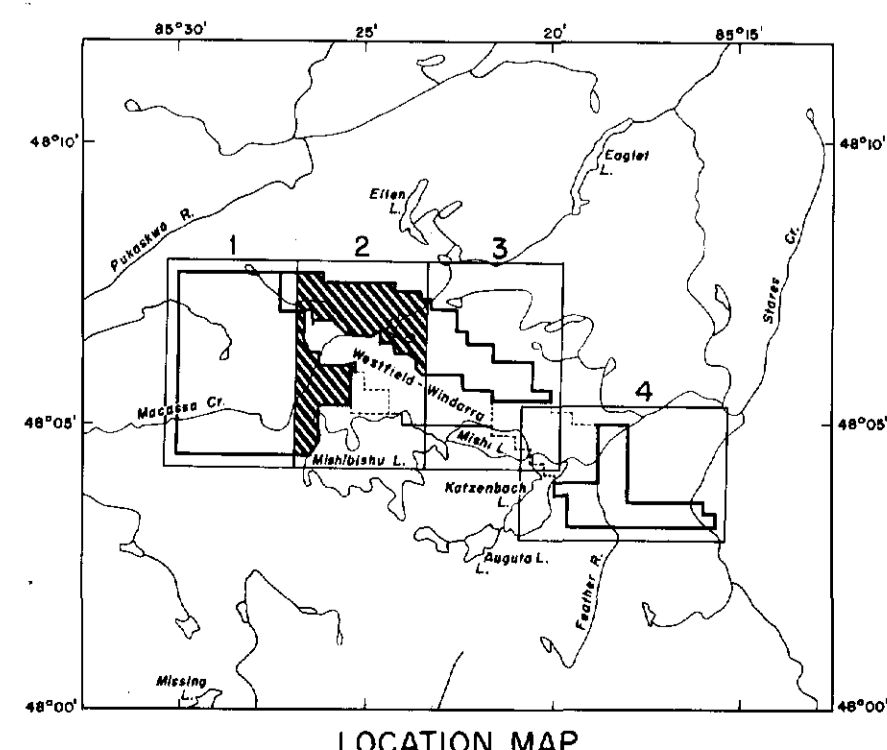
42c/03 NW-0017 #2



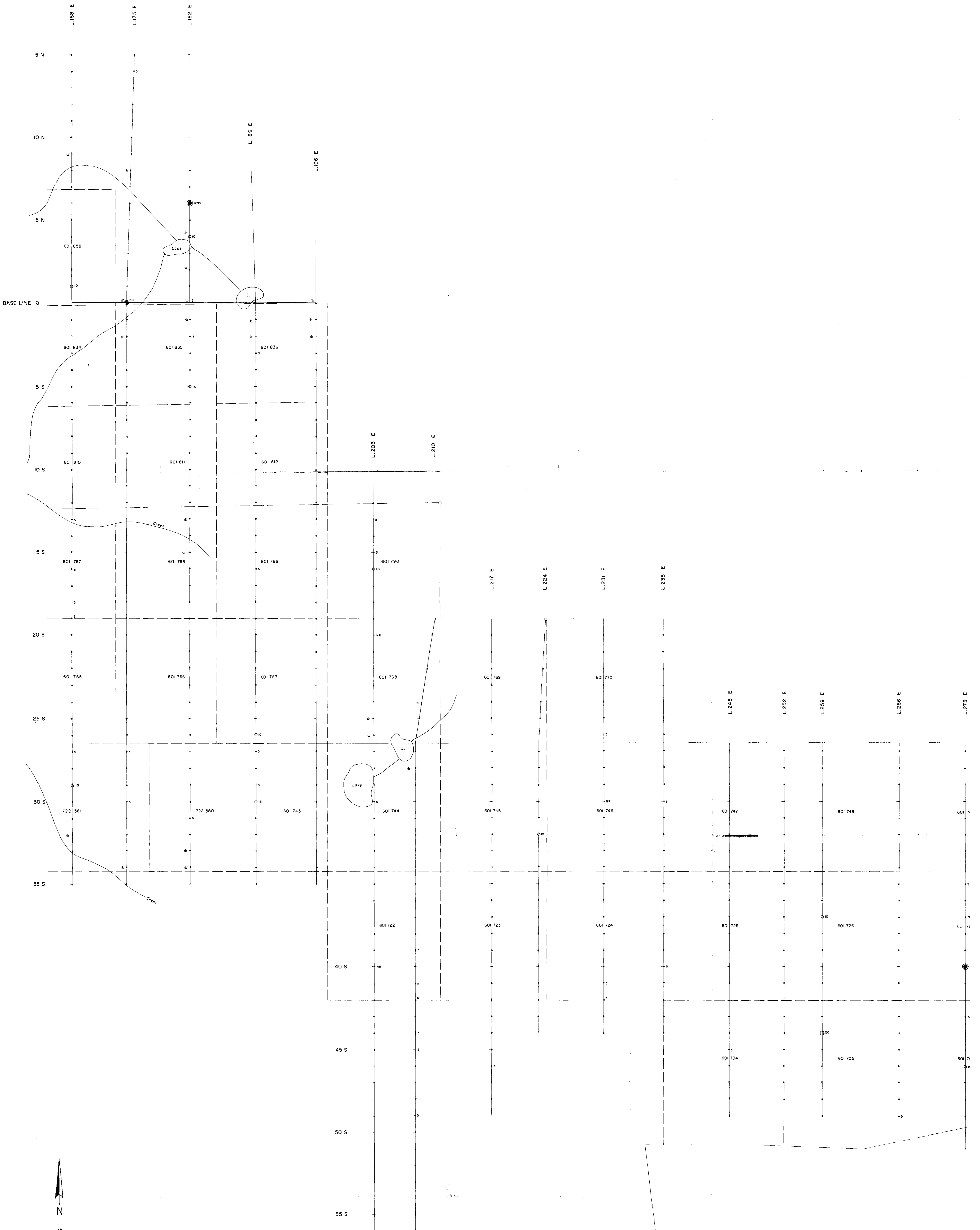
42C/03 NW-0017#3



FLAG LAKE
PLATE 1S 1984



42C/03 NW-0017 # 4



42C/03 NW-0017

PLATE 1S 1984

#4 28993

230
COMPILED AND DRAWN BY
 WILLIAM JAMAL and ASSOCIATES LTD.

MACMILLAN ENERGY CORPORATION
 MISHIBISHU LAKE AREA
 SAULT STE MARIE MINING DIVISION

**CENTRAL GRID
 SOIL GEOCHEMICAL SURVEY**

Project No. 42 C/3 Date Oct Nov - 1985
 Scale 1:5,000

PLATE 3

LEGEND

Circle only indicates value is less than five (<5 ppb) ...

5-9 ppb ...

10-19 ppb ...

20-39 ppb ...

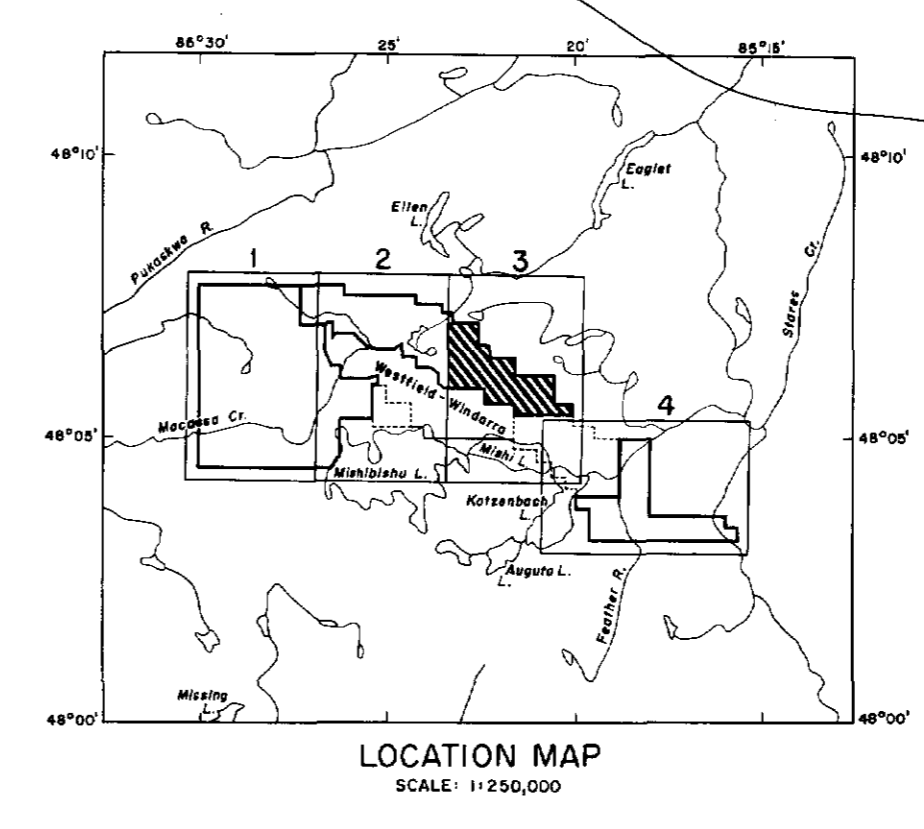
40-79 ppb ...

80 ppb-over ...

OUTCROP ... OC

NO READING ... NR

INSUFFICIENT SAMPLE ... IS



42C/03NW-0017#5

PLATE 1S 1984

PLATE 2S 1984

Mishi
Lake

Katzenbach
Lake

Lake

25 N

20 N

15 N

10 N

5 N

BASE LINE 0

5 S

10 S

644 673

644 681

661 008

644 674

644 680

661 003

661 009

644 675

644 680

661 004

661 000

644 676

644 679

661 005

661 010

644 677

644 678

661 005

661 019

644 678

644 678

661 051

661 052

644 679

644 678

661 056

661 057

644 680

644 678

661 061

661 062

L000

L7E

L18E

L21E

L28E

L35E

L42E

L49E

L56E

L63E

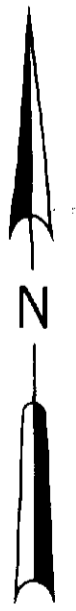
L70E

L77E

L84E

L91E

L98E



LEGEND

Circle only indicates value is less than five (5 ppb)

5-9 ppb

10-19 ppb

20-39 ppb

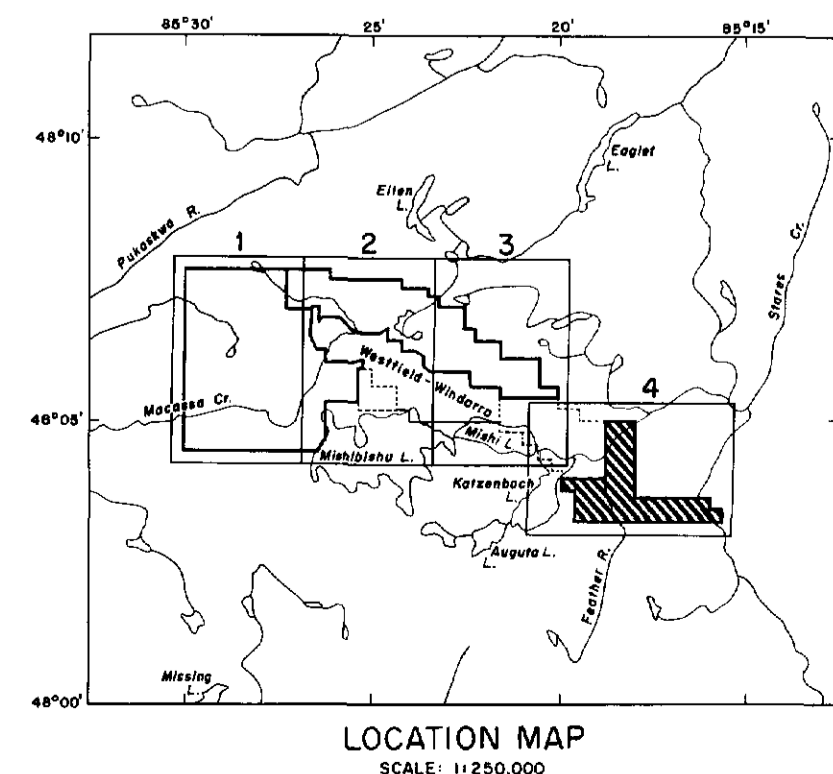
40-79 ppb

80 ppb - over

OUTCROP

NO READING

INSUFFICIENT SAMPLE



LOCATION MAP
SCALE: 1:250,000

#5

28993



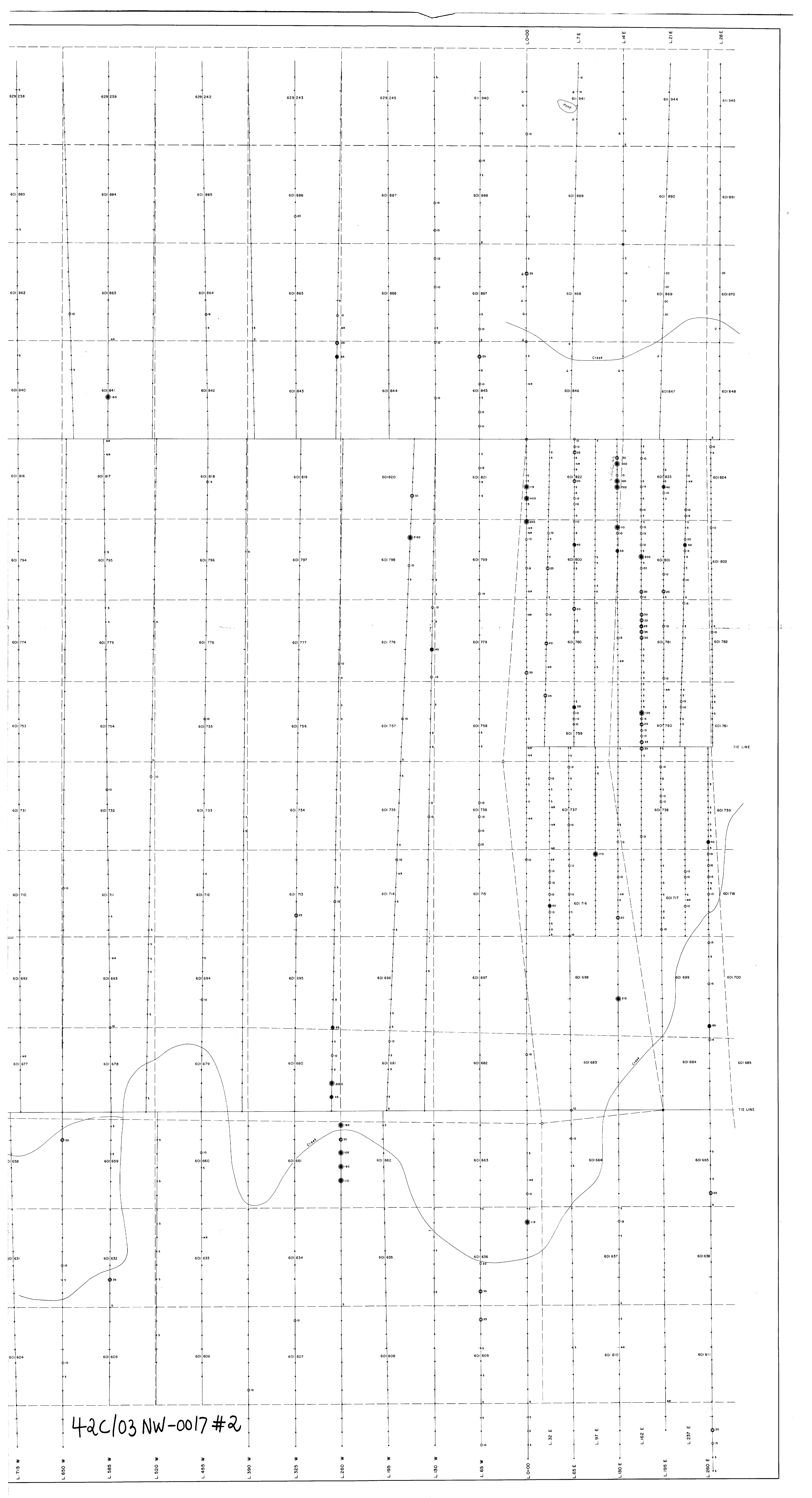
240

COMPILERS AND DRAWN BY
WILLIAM JAMAL AND ASSOCIATES LTD.

MACMILLAN ENERGY CORPORATION
MISHIBISHU LAKE AREA
SAULT STE MARIE MINING DIVISION
EAST GRID, St. Germain Twp.
SOIL GEOCHEMICAL SURVEY

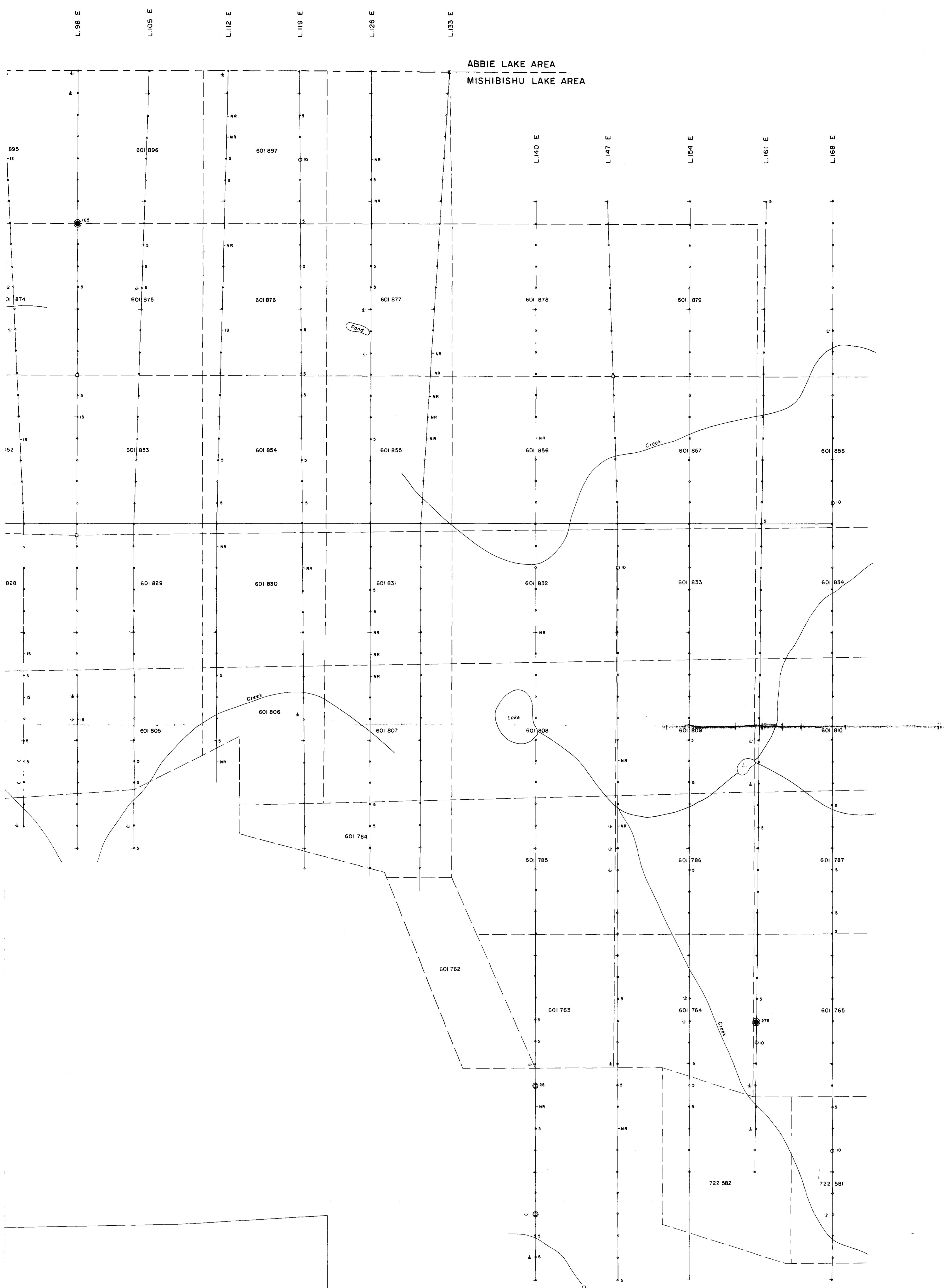
PROSPECTING GEOPHYSICS LTD. 42 C/3
Date 1:5,000
PLATE 4

William Jamal

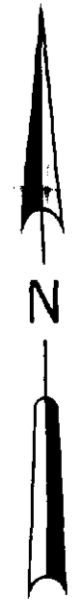


42C/03 NW-0017 #2

ABBIE LAKE AREA
MISHIBISHU LAKE AREA

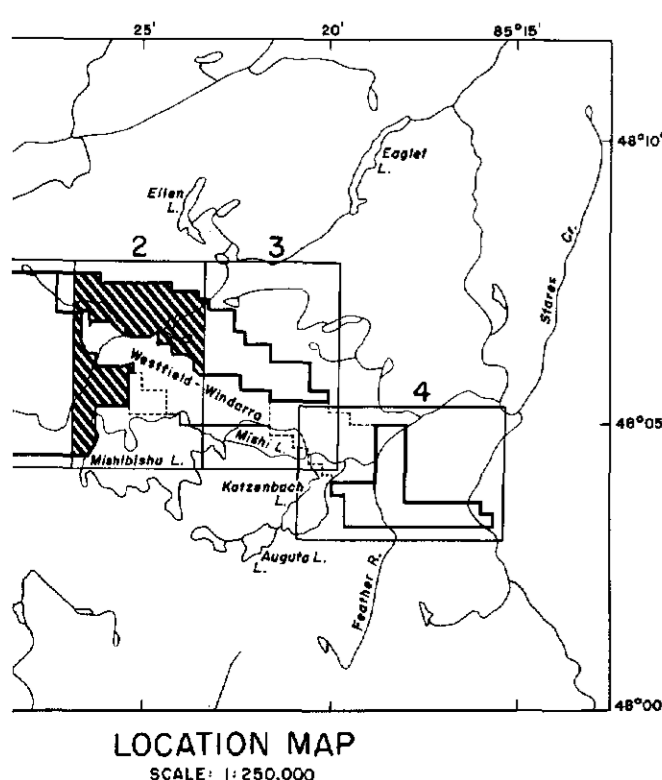


FLAG LAKE
PLATE 1S 1984



42c/03 NW-0017 #3

28993



LEGEND

- Circle only indicates value is less than five (<5 ppb) . . .
- 5-9 ppb
- 10-19 ppb
- 20-39 ppb
- 40-79 ppb
- 80 ppb - over
- OUTCROP OC
- NO READING NR
- INSUFFICIENT SAMPLE IS

COMPILED and DRAWN by
WILLIAM JAMAL and ASSOCIATES LTD.

MACMILLAN ENERGY CORPORATION		
MISHIBISHU LAKE AREA SAULT STE MARIE MINING DIVISION		
WEST and CENTRAL GRID SOIL GEOCHEMICAL SURVEY		
Survey by PROSPECTING GEOPHYSICS LTD.	INT. No. 42 C/3	Date Oct Nov. - 1985
Scale 1:5,000	PLATE 2	

[Handwritten signature]

L.217 E
L.224 E
L.231 E
L.238 E

L.245 E
L.252 E
L.259 E
L.266 E
L.273 E
L.280 E

DISTRICT OF THUNDER BAY
DISTRICT OF ALGOMA

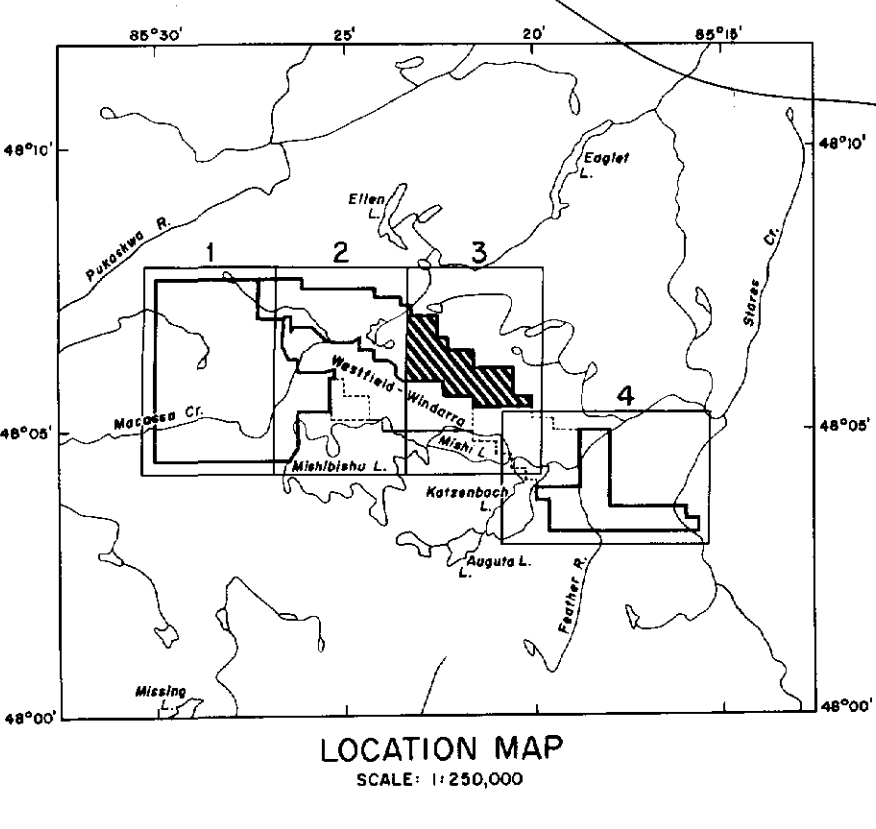
TIE LINE (26+50 S)

TIE LINE

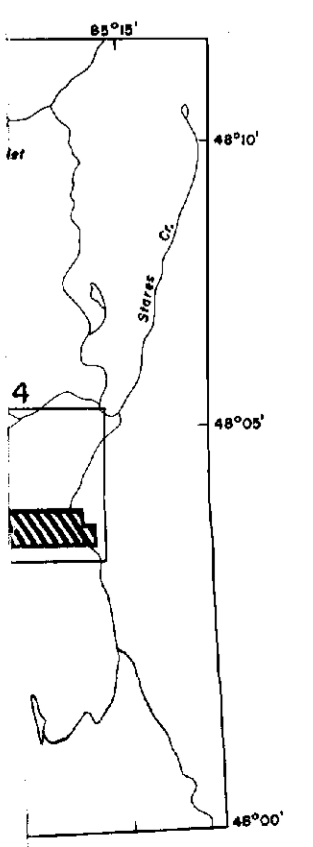
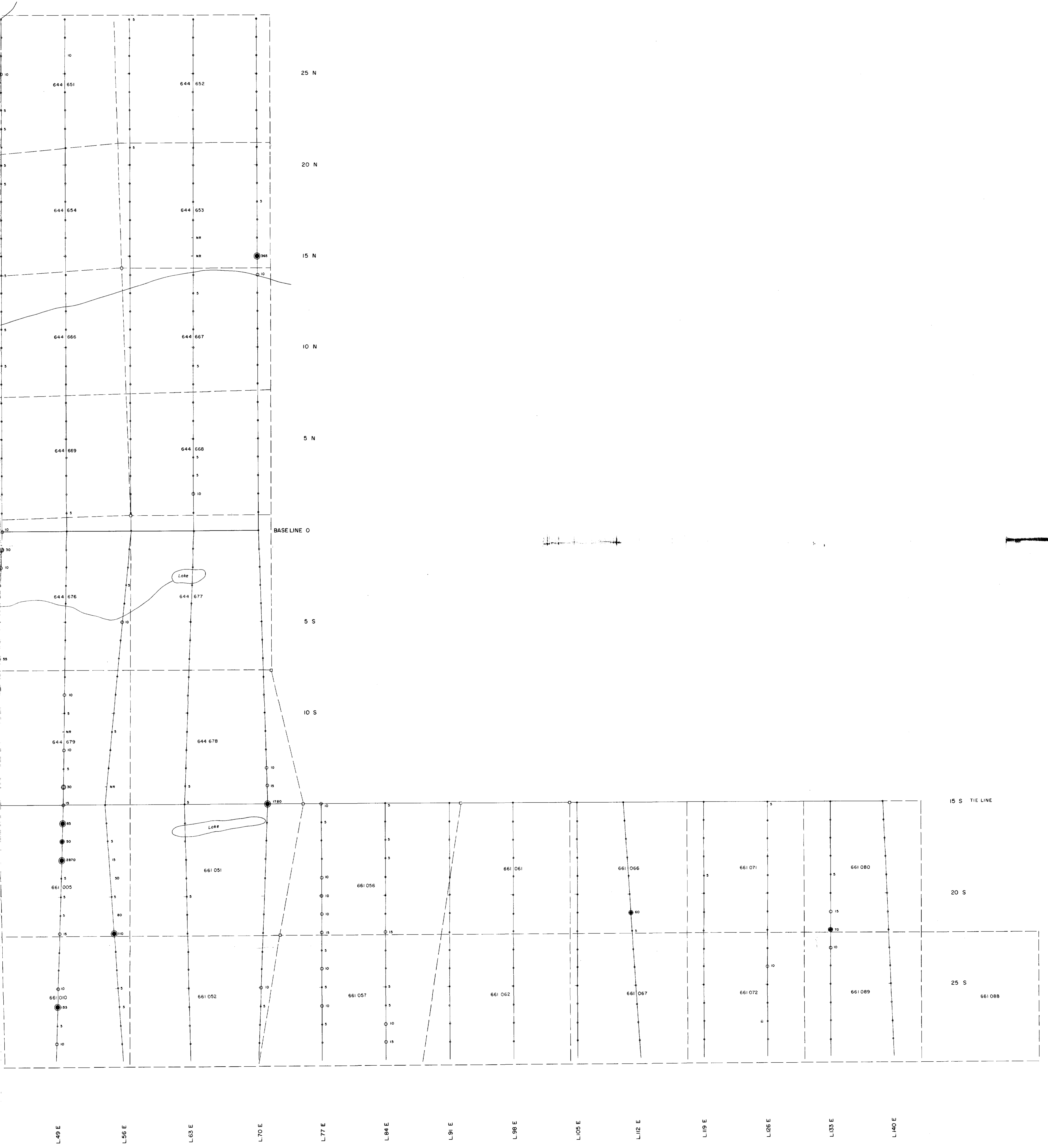
42C/03NW-0017#4

PLATE 1S 1984

PLATE 2S 1984



Mishi Lake



42c/03NW-0017#5