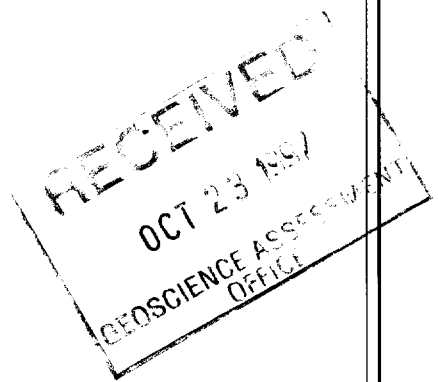


2.17768

CHANNEL SAMPLING
ON THE M-1 GRID OF THE
MISHI GOLD PROPERTY

Prepared for
Mishibishu Gold Corporation
Vancouver, British Columbia

October 3, 1997



2.17768



Bruce C. Wilson
Structural Geologist

Phone or Fax (613) 544-2171
347 Albert St., Kingston, Ontario, Canada, K7L 3W1



42C03SW0086 2.17768 MISHIBISHU LAKE

SUMMARY

The current sampling program was conducted to see if there is near surface gold that could be extracted from stripped outcrops on the M-1 grid. It is a preliminary "reconnaissance" study. Channels were laid out to maximize the probability of finding gold. Consequently, where gold values are poor no further work is justified and where gold values are good further work is required.

A total of 547 samples were taken. In one outcrop area 6 contiguous samples contained an average of 5.91 grams / tonne over 3.6 metres, 3 contiguous samples contained an average of 6.96 grams / tonne over 1.8 metres, 4 contiguous samples contained an average of 14.3 grams / tonne over 2.4 metres, and 5 contiguous samples contained an average of 6.93 grams / tonne over 3.0 metres. In another outcrop area one sample contained 116 grams / tonne over 0.6 metre, 2 contiguous samples contained an average of 16.6 grams / tonne over 1.2 metres, 2 contiguous samples contained an average of 83.3 grams / tonne over 1.2 metres, and 5 contiguous samples contained an average of 32.9 grams / tonne over 3 metres.

Three outcrop areas may contain economically recoverable gold. Areas where gold values appear to be good and mining would be feasible should be carefully delineated and sampled in detail. Each channel should extend across the entire area of interest. To help remove sampling bias, channels should be evenly spaced.

2 . 1 7 7 6 8

TABLE OF CONTENTS

INTRODUCTION	1
The Mishi Gold property	1
Location and access	1
Summary of exploration and development	1
General regional geology	1
General property geology	3
The study area	3
Previous channel samples	6
 CHANNEL SAMPLING	 6
Objectives	6
Sampling procedure	6
Results	7
Recommendations	7
 REFERENCES	 8
 STATEMENT OF QUALIFICATION	 9
 APPENDICES	 10
Appendix A List of claims	
Appendix B Certificates of analyses	
List of Figures	2. 17763
Figure 1. Location and access	2
Figure 2. Geology of the M-1 grid	4
Figure 3. The Study area	5
List of Maps	
Map 1. Area's "C", "B", "D"	
Map 2. Area "H" White Swan	
Map 3. Area "k"	
Map 4. Area "O" Granges Glory	



INTRODUCTION

The Mishi Gold property

The Mishi Gold property is held by MacMillan Gold Corporation of and is currently under option to Mishibishu Gold Corporation. It consists of 491 contiguous mining claims and 3 leased claims located in the Sault Ste. Marie Mining Division. All claims are in good standing. Work was performed on claims that lie within the Mishibishu Lake Area G-3772. A detailed list of property claims is presented in the appendices.

This report covers channel sampling performed on a portion of the M-1 grid of the Mishi Gold property between August 8 and September 8, 1997.

Location and access

The M-1 grid of the Mishi Gold property is located about 55 km west of Wawa Ontario. It can be reached from Wawa by following Highway 17 for 50 km, and a gravel road that ultimately leads to the Eagle River Mine for another 50 km (Figure 1).

Summary of exploration and development

Previous exploration of the M-1 grid has been carried out mainly by Granges Incorporated. Work has included line cutting, prospecting, magnetic and electromagnetic surveys, mapping, channel sampling, bulk sampling, and diamond drilling. Much of the work has been submitted for assessment credit.

General regional geology

The Mishi Gold property lies in the northern portion of the Mishibishu Lake greenstone belt, south of the Kabenung Lake greenstone belt and southwest of the Michipicoten greenstone belt (Figure 1) in the Wawa Subprovince of the Superior Province of the Canadian shield.

The Mishibishu Lake greenstone belt consists of volcanic rocks, related hypabyssal rocks, and sedimentary rocks that have been metamorphosed, deformed, and intruded by granitoid plutons and diabase dikes. The dikes are probably Keweenawan (Reid and Reilly, 1987). The rest of the rocks are probably Archean.

The metamorphic grade of the supracrustal rocks (the volcanic rocks, related hypabyssal rocks, and sedimentary rocks) is greenschist facies, except close to some of the felsic plutons where it is amphibolite facies (Reid and Reilly, 1987) or hornblende-hornfels facies (Bennett and Thurston, 1977). Because all of the supracrustal rocks are metamorphosed, I shall not use the prefix "meta" in naming the rocks.

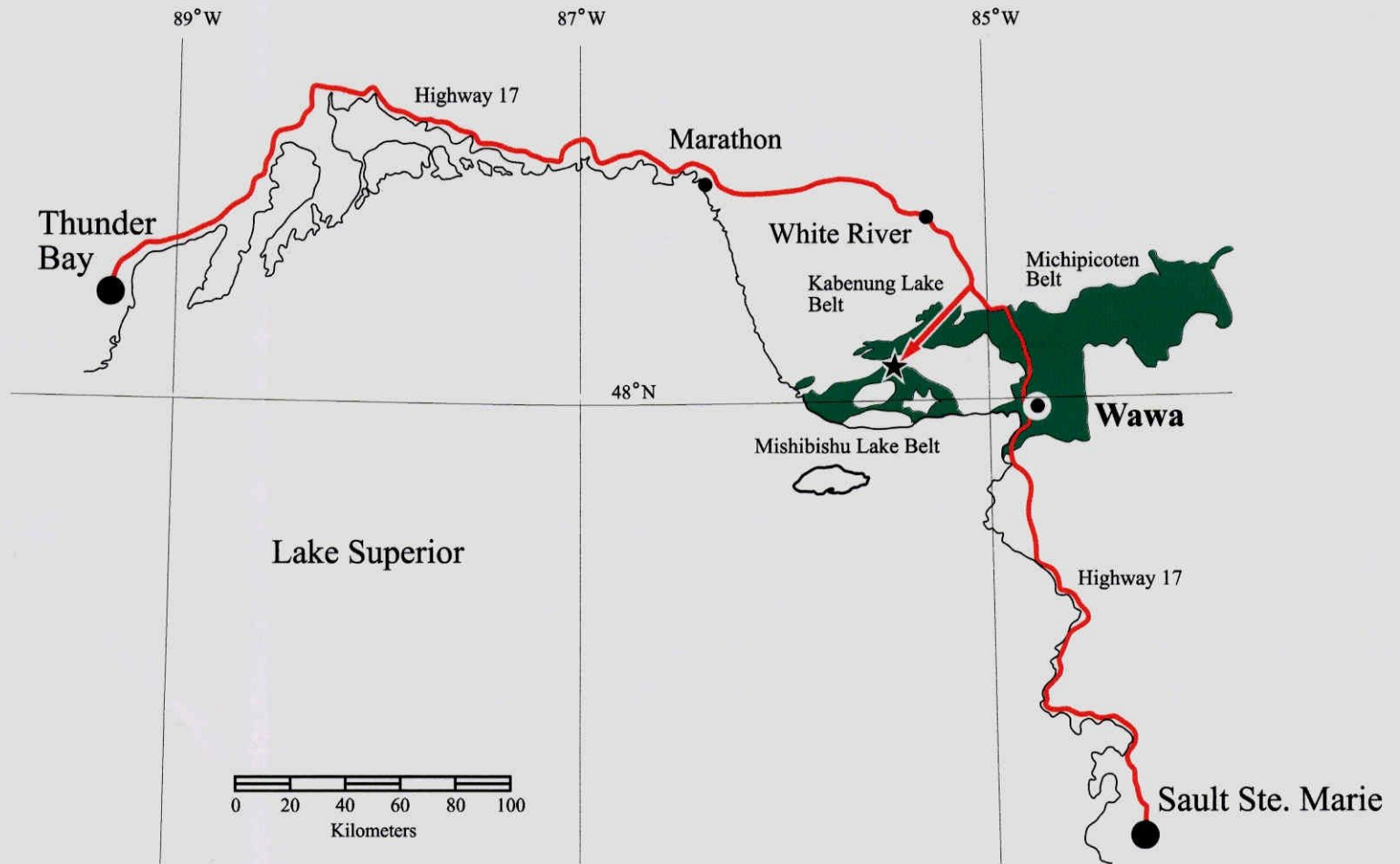


Figure 1. Location and access. The location of the Mishi Gold Property is represented by a star, and the gravel road into the M-1 grid from Highway 17 is represented by a straight arrow. After the Geological Map of Northern Ontario.

The supracrustal rocks were probably deposited adjacent to, and perhaps in part on, granitoid rocks. The overall form of the greenstone belt developed as the supracrustal rocks subsided and the surrounding and underlying granitoid rocks rose.

Bedrock is partially covered by Pleistocene deposits consisting predominantly of ground moraine, tills, and clays (Reid and Reilly, 1987).

General property geology

According to Bates and Miree (1991) the M-1 grid contains, from north to south:

- 1) mafic volcanic rocks including flows, sills, and tuffs
- 2) felsic to intermediate tuffs and hypabyssal rocks
- 3) clastic sedimentary rocks including argillite (mudstone), wacke, and conglomerate

All of the supracrustal rocks are metamorphosed, and portions of them are metasomatized (hydrothermally altered).

Except for the possible occurrence of quartz-feldspar porphyry, all of the rocks within the study area were originally pyroclastic or epiclastic. Most rocks were tuffs or mudstones, and some rocks were lapilli tuffs or conglomerates. Few of the clastic rocks look like “pristine” tuffs, or like “well-worked” mudstones or conglomerates. Where the rocks are unaltered, the primary mafic mineral is commonly amphibole. Mica is rare or absent. Compositional banding is common, but colours tend to be white or shades of green like volcanic rocks, not shades of grey or brown like sedimentary rocks. Relative to their volcanic source, the rocks are distal pyroclastic rocks or proximal epiclastic rocks.

The supracrustal rocks are cut by two sets of diabase dikes. Dikes of one set strike approximately northwest, and dikes of the other set strike approximately north-northeast.

According to Heather (1986), the Mishi Gold property is transected by a “deformation zone” that is characterized by shear zones and related structural features. Bates and Miree (1991) report that there is ductile deformation within several shear zones, and brittle-ductile deformation within a zone they call the Western Structural Zone (Figure 2). I did not see any evidence for shear zones. Structural features that are supposedly related to shear zones are related to different events. The predominant structural feature, conjugate contractural kink bands, could not be related to the proposed shear zones. Deformation is brittle-ductile throughout the study area (defined below), and the same structural features occur everywhere (see Wilson, 1997).

The study area

The study area consisted of stripped outcrop areas that I have named A to Q (Figure 3). Some of the outcrop areas were given names by geologists of Granges Incorporated: outcrop area A was known as KK; outcrop area C was known as MM; the southern portion of outcrop area D was known as Tension; outcrop area E was known as Confusion Corner; outcrop area F was known as Jake’s Place; the northern portion of

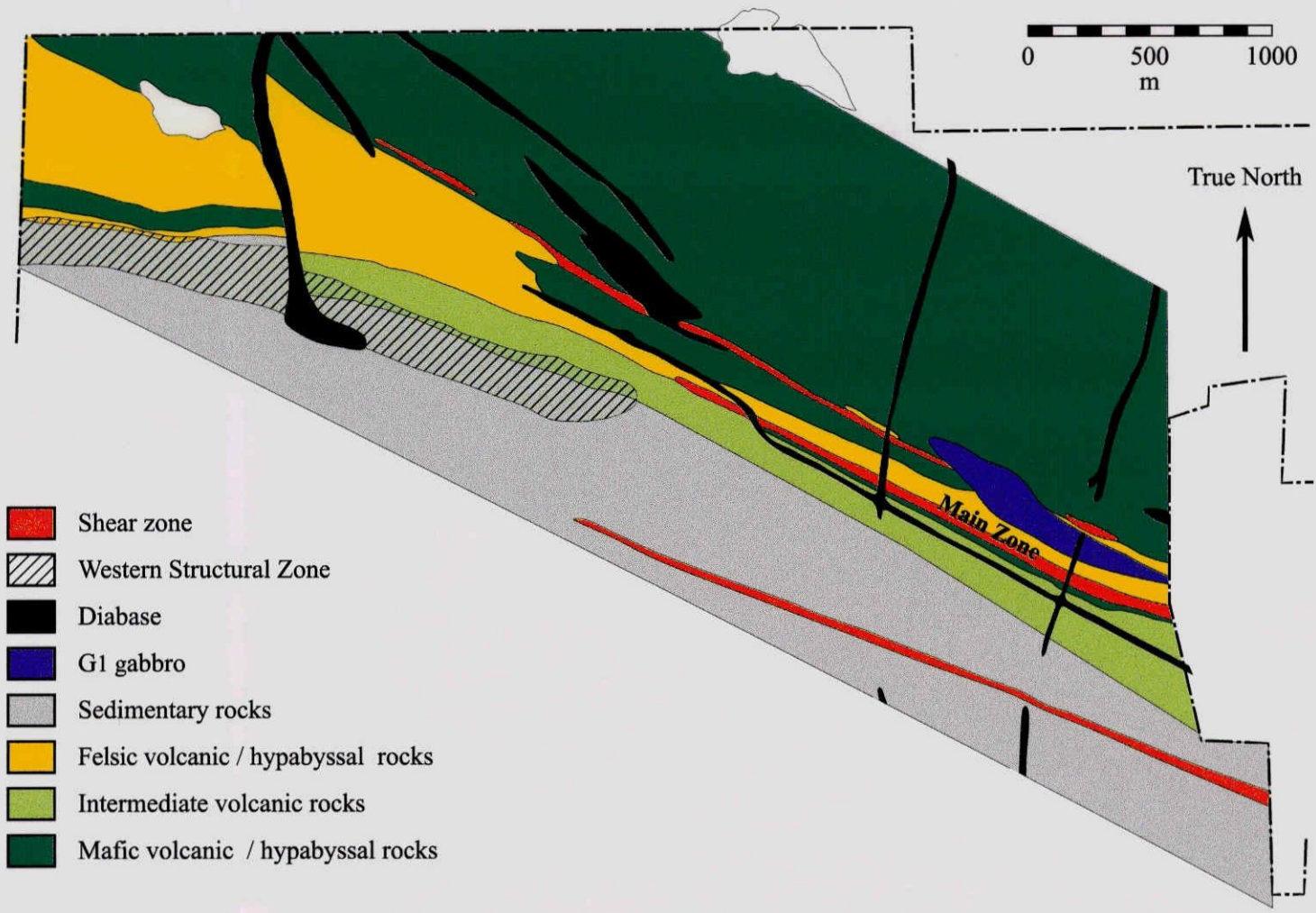
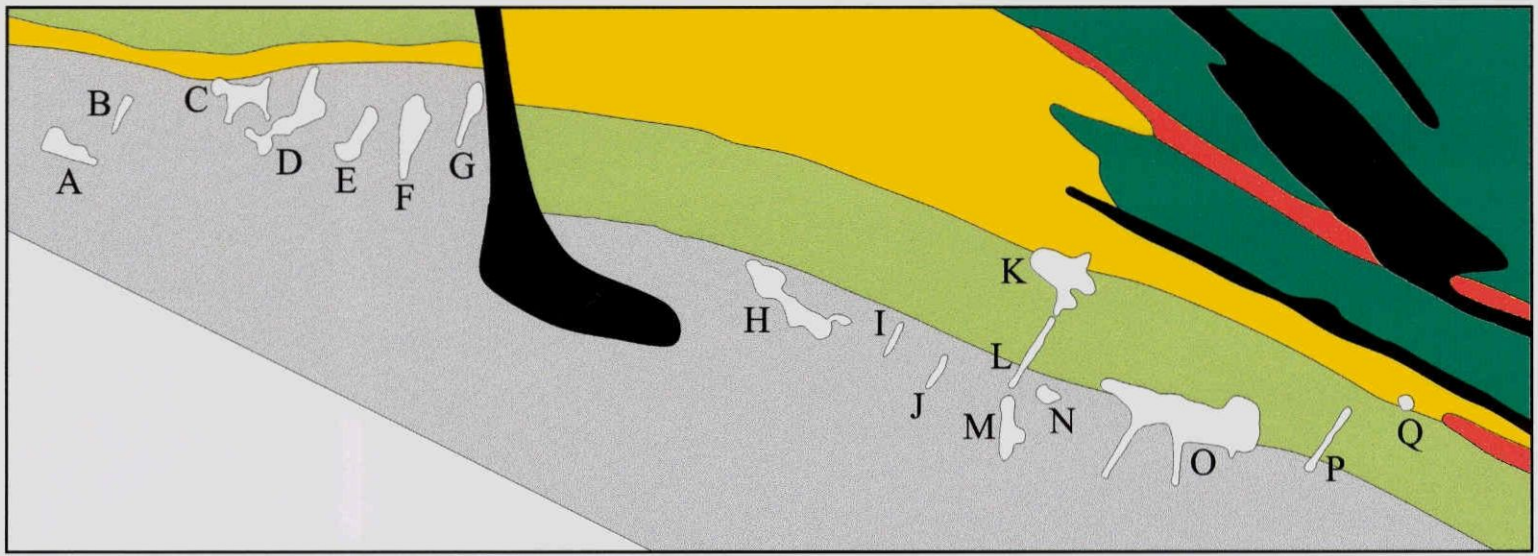
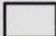
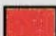







Figure 2. Geology of the M-1 grid. After a map by Granges Incorporated.

5



-  Outcrop area
-  Shear zone
-  Diabase
-  Sedimentary rocks
-  Felsic volcanic / hypabyssal rocks
-  Intermediate volcanic rocks
-  Mafic volcanic / hypabyssal rocks

True North

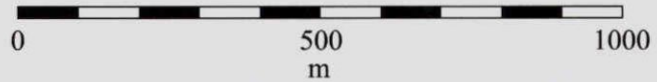


Figure 3. The study area. After a map by Granges Incorporated.

outcrop area G was known as Cliff Hanger; outcrop area H was known as White Swan; outcrop area O was known as Granges Glory; and outcrop area Q was known as Warren's Whopper.

Previous channel samples

Granges Incorporated sampled channels at outcrop areas C, D, E, F, G, H, and O. Available results for outcrop area C are shown on Map 2, available results for outcrop area D are shown on Map 3, and available results for outcrop area O are shown on Map 6. Data for outcrop area H were not available at the time of the study. Of 160 samples taken from outcrop area E, 17 contained more than 1 gram of gold / tonne of rock, 5 contained more than 2 grams / tonne, and 3 contained more than 3 grams / tonne. Of 89 samples taken from outcrop area F, 3 contained more than 1 gram / tonne. At outcrop area G, where 47 samples were taken, the only reported values are 3.997 grams / tonne over 0.5 metres, 1.44 grams / ton over 0.5 metres, and 2.194 grams / tonne over 0.5 metres.

CHANNEL SAMPLING

Objectives

In a report for Granges Incorporated, Bates and Miree (1991) noted that at outcrop area O, 'if small-scale extremely selective mining methods were effectively utilized, near surface mineralization might be extracted economically'. Assuming that the Main Zone would soon be brought into production as an open pit, the current sampling program was conducted to see if there is near surface gold that could be extracted within the study area.

Sampling procedure

Within the study area, gold is found in, and adjacent to, smoky quartz veins and pods (Bates and Miree 1991). Veins commonly occur in aggregates. Strike lengths of individual veins are generally shorter than the distances between channels. Only a few aggregates are long enough to be cut by more than one channel.

This is a preliminary "reconnaissance" study. Channels were laid out to maximize the amount of smoky quartz they transect, and thus maximize the probability of finding gold. Consequently, where gold values are poor no further work is justified and where gold values are good further work is required.

Channels were laid out by Bruce C. Wilson. Samples intervals were originally laid out at 0.3 m, but were changed to 0.6 m. Wherever possible, channels are perpendicular to the strikes of smoky quartz veins. Samples were chipped, bagged, and tagged by Joseph N. Dion, geologist (6303 - 315 Southamptton Drive SW, Calgary,

Alberta, T2W 2T6). Channel sawing was supervised by Bruce C. Wilson and Joseph N. Dion. Saw cuts generally exceeded 3 centimetres in depth.

A total of 547 samples were taken: 41 at outcrop area B; 120 at outcrop area C; 11 at outcrop area D; 223 at outcrop areas H; 94 at outcrop area K; and 58 at outcrop area O.

Results

A detailed list of results is presented in the appendices.

At outcrop areas B (Map 1), D (Map 3), and K (Map 5), only a few samples contained more than 1 gram of gold / tonne of rock, and none contained more than 4 grams / tonne.

At outcrop area C (Map 2), 42 samples contained more than 1 gram / tonne, 7 samples contained more than 5 grams / tonne, and one sample contained more than 10 grams / tonne.

At outcrop area H (Map 4), 50 samples contained more than 1 gram / tonne, 20 samples contained more than 5 grams / tonne, and 11 samples contained more than 10 grams / tonne. In an aggregate of smoky quartz veins at the east end of the outcrop area: 6 contiguous samples contained 2.95, 3.81, 6.24, 14.6, 5.28, and 2.57 grams / tonne for an average of 5.91 grams / tonne over 3.6 metres; 3 contiguous samples contained 14.7, 2.23, and 3.94 grams / tonne for an average of 6.96 grams / tonne over 1.8 metres; 4 contiguous samples contained 3.77, 44.5, 3.74, and 5.25 grams / tonne for an average of 14.3 grams / tonne over 2.4 metres; and 5 contiguous samples contained 13.6, about 0.50, 2.71, 3.05, and 14.8 grams / tonne for an average of 6.93 grams / tonne over 3.0 metres.

At outcrop area O (Map 6), 20 samples contained more than 1 gram / tonne, 12 samples contained more than 5 grams / tonne, and 8 samples contained more than 10 grams / tonne. In relatively thick smoky quartz veins: one sample contained 116 grams / tonne; 2 contiguous samples contained 27.0 and 6.17 grams / tonne for an average of 16.6 grams / tonne over 1.2 metres; 2 contiguous samples contained 139 and 27.5 grams / tonne for an average of 83.3 grams / tonne over 1.2 metres; and 5 contiguous samples contained 25.3, 51.0, 64.8, 6.27, and 17.2 grams / tonne for an average of 32.9 grams / tonne over 3 metres.

Recommendations

Outcrop areas C, H, and O may contain economically recoverable gold. To determine where gold can be extracted, and how much there may be, further sampling is required.

Areas where gold values appear to be good and mining would be feasible should be carefully delineated and sampled in detail. Each channel should extend across the entire area of interest. To help remove sampling bias, channels should be evenly spaced.

Dated at Kingston, Ontario this 3rd day of October, 1997.

Bruce Wilson.

Bruce Wilson

55
83 1 17 7 0 43

REFERENCES

- Bates, Warren, and Miree, Heather, 1991
Mishi Lake joint venture project. Report for Granges Incorporated, Vancouver, British Columbia, 72 pages plus appendices.
- Bennett, Gerald, and Thurston, P. C., 1977
Geology of the Pukaskwa River - University River area, Districts of Algoma and Thunder Bay. Ontario Division of Mines, GR153, 60 pages, accompanied by Maps 2332 and 2333, scale 1:63,360 or 1 inch to 1 mile, and a chart.
- Heather, K. B., 1986
Mineralization of the Mishibishu Lake Greenstone Belt. *in*: Summary of field work and other activities 1986, Ontario Geological Survey, Edited by P. C. Thurston, Owen L. White, R. B. Barlow, M. E. Cherry, and A. C. Colvine, Ontario Geological Survey Miscellaneous Paper 132, pages 283 to 291.
- Reid, R. G., and Reilly, B. A., 1987
Mishibishu Lake area, Districts of Algoma and Thunder Bay. *in*: Summary of field work and other activities 1987, Ontario Geological Survey, Edited by R. B. Barlow, Burkhard O Dressler, and Owen L. White, Ontario Geological Survey Miscellaneous Paper 137, pages 138 to 145.
- Wilson, B. C., 1997
A re-examination of structural geology and gold on the M-1 grid of the Mishi Gold property. Report for Mishibishu Gold Corporation.

STATEMENT OF QUALIFICATION

I, Bruce Wilson, of the city of Kingston, in the province of Ontario, do hereby certify that:

1. I am a self-employed, consulting structural geologist.
2. I received an Honours B.Sc. in geology from Queen's University at Kingston, Ontario in 1974, and an M.Sc. in geology from Queen's University at Kingston, Ontario, in 1976.
3. I have practiced geology since 1976.

Dated at Kingston, Ontario this 3rd day of October, 1997.

A handwritten signature in cursive script that reads "Bruce Wilson".

Bruce Wilson
Structural Geologist

APPENDICES

APPENDIX A - LIST OF CLAIMS FOR MISHI GOLD PROPERTY

Client: 162922 - MACMILLAN GOLD CORP.

Total Claims: 490

Township: MISHIBISHU LAKE

Claim Number	Recording Date	Due Date	Claim Status	Percent /Option	Work Required	Work Applied	Total Reserve	Claim Bank
SS 1037469	1987-OCT-27	1997-OCT-27	A	100.00 Y	400	3,600	0	800
SS 1163972	1997-FEB-19	1999-FEB-19	A	100.00	1,600	0	0	0
SS 1163973	1997-FEB-19	1999-FEB-19	A	100.00	400	0	0	0
SS 601601	1982-OCT-12	1997-OCT-10E	A	100.00	800	5,200	0	0
SS 601602	1982-OCT-12	1997-OCT-10E	A	100.00	800	5,200	0	0
SS 601603	1982-OCT-12	1997-OCT-10E	A	100.00	800	5,200	0	0
SS 601604	1982-OCT-12	1997-OCT-10E	A	100.00	800	5,200	0	0
SS 601605	1982-OCT-12	1997-OCT-10E	A	100.00	800	5,200	0	0
SS 601606	1982-OCT-12	1997-OCT-10E	A	100.00	800	5,200	0	0
SS 601607	1982-OCT-12	1997-OCT-10E	A	100.00	800	5,200	0	0
SS 601608	1982-OCT-12	1997-OCT-10E	A	100.00	800	5,200	0	0
SS 601609	1982-OCT-12	1997-OCT-10E	A	100.00	800	5,200	0	0
SS 601610	1982-OCT-12	1997-OCT-10E	A	100.00	800	5,200	0	0
SS 601611	1982-OCT-12	1997-OCT-10E	A	100.00	800	5,200	0	0
SS 601612	1982-OCT-12	1997-OCT-10E	A	100.00	800	5,200	0	0
SS 601613	1982-OCT-12	1997-OCT-10E	A	100.00	800	5,200	0	0
SS 601614	1982-OCT-12	1997-OCT-10E	A	100.00	800	5,200	0	0
SS 601615	1982-OCT-12	1997-OCT-10E	A	100.00	800	5,200	0	0
SS 601616	1982-OCT-12	1997-OCT-10E	A	100.00	800	5,200	0	0
SS 601617	1982-OCT-12	1997-OCT-10E	A	100.00	800	5,200	0	0
SS 601618	1982-OCT-12	1997-OCT-10E	A	100.00	800	5,200	0	0
SS 601619	1982-OCT-12	1997-OCT-10E	A	100.00	800	5,200	0	0
SS 601620	1982-OCT-12	1997-OCT-10E	A	100.00	800	5,200	0	0
SS 601621	1982-OCT-12	1997-OCT-10E	A	100.00	800	5,200	0	0
SS 601622	1982-OCT-12	1997-OCT-10E	A	100.00	800	5,200	0	0
SS 601623	1982-OCT-12	1997-OCT-10E	A	100.00	800	5,200	0	0
SS 601624	1982-OCT-12	1997-OCT-10E	A	100.00	800	5,200	0	0
SS 601628	1982-OCT-12	1997-OCT-10E	A	100.00	800	5,200	0	0
SS 601629	1982-OCT-12	1997-OCT-10E	A	100.00	800	5,200	0	0
SS 601630	1982-OCT-12	1997-OCT-10E	A	100.00	800	5,200	0	0
SS 601631	1982-OCT-12	1997-OCT-10E	A	100.00	800	5,200	0	0
SS 601632	1982-OCT-12	1997-OCT-10E	A	100.00	800	5,200	0	0
SS 601633	1982-OCT-12	1997-OCT-10E	A	100.00	800	5,200	0	0
SS 601634	1982-OCT-12	1997-OCT-10E	A	100.00	800	5,200	0	0
SS 601635	1982-OCT-12	1997-OCT-10E	A	100.00	800	5,200	0	0
SS 601636	1982-OCT-12	1997-OCT-10E	A	100.00	800	5,200	0	0
SS 601637	1982-OCT-12	1997-OCT-10E	A	100.00	800	5,200	0	0
SS 601638	1982-OCT-12	1997-OCT-10E	A	100.00	800	5,200	0	0
SS 601639	1982-OCT-12	1997-OCT-10E	A	100.00	800	5,200	0	0
SS 601640	1982-OCT-12	1997-OCT-10E	A	100.00	800	5,200	0	0
SS 601641	1982-OCT-12	1997-OCT-10E	A	100.00	800	5,200	0	0
SS 601642	1982-OCT-12	1997-OCT-10E	A	100.00	800	5,200	0	0
SS 601643	1982-OCT-12	1997-OCT-10E	A	100.00	800	5,200	0	0
SS 601644	1982-OCT-12	1997-OCT-10E	A	100.00	800	5,200	0	0
SS 601645	1982-OCT-12	1997-OCT-10E	A	100.00	800	5,200	0	0
SS 601646	1982-OCT-12	1997-OCT-10E	A	100.00	800	5,200	0	0
SS 601647	1982-OCT-12	1997-OCT-10E	A	100.00	800	5,200	0	0

Client: 162922 - MACMILLAN GOLD CORP.

Total Claims: 490

SS	601648	1982-OCT-12	1997-OCT-10E	A	100.00	800	5,200	0	C
SS	601649	1982-OCT-12	1997-OCT-10E	A	100.00	800	5,200	0	C
SS	601650	1982-OCT-12	1997-OCT-10E	A	100.00	800	5,200	0	C
SS	601651	1982-OCT-12	1997-OCT-10E	A	100.00	800	5,200	0	C
SS	601654	1982-OCT-12	1997-OCT-10E	A	100.00	800	5,200	0	C
SS	601655	1982-OCT-12	1997-OCT-10E	A	100.00	800	5,200	0	C
SS	601656	1982-OCT-12	1997-OCT-10E	A	100.00	800	5,200	0	C
SS	601657	1982-OCT-12	1997-OCT-10E	A	100.00	800	5,200	0	C
SS	601658	1982-OCT-12	1997-OCT-10E	A	100.00	800	5,200	0	C
SS	601659	1982-OCT-12	1997-OCT-10E	A	100.00	800	5,200	0	C
SS	601660	1982-OCT-12	1997-OCT-10E	A	100.00	800	5,200	0	C
SS	601661	1982-OCT-12	1997-OCT-10E	A	100.00	800	5,200	0	C
SS	601662	1982-OCT-12	1997-OCT-10E	A	100.00	800	5,200	0	C
SS	601663	1982-OCT-12	1997-OCT-10E	A	100.00	800	5,200	0	C
SS	601664	1982-OCT-12	1997-OCT-10E	A	100.00	800	5,200	0	C
SS	601665	1982-OCT-12	1997-OCT-10E	A	100.00	800	5,200	0	C
SS	601666	1982-OCT-12	1997-OCT-10E	A	100.00	800	5,200	0	C
SS	601667	1982-OCT-12	1997-OCT-10E	A	100.00	800	5,200	0	C
SS	601668	1982-OCT-12	1997-OCT-10E	A	100.00	800	5,200	0	C
SS	601669	1982-OCT-12	1997-OCT-10E	A	100.00	800	5,200	0	C
SS	601670	1982-OCT-12	1997-OCT-10E	A	100.00	800	5,200	0	C
SS	601671	1982-OCT-12	1997-OCT-10E	A	100.00	800	5,200	0	C
SS	601672	1982-OCT-12	1997-OCT-10E	A	100.00	800	5,200	0	C
SS	601673	1982-OCT-12	1997-OCT-10E	A	100.00	800	5,200	0	C
SS	601674	1982-OCT-13	1997-OCT-10E	A	100.00	800	5,200	0	C
SS	601675	1982-OCT-13	1997-OCT-10E	A	100.00	800	5,200	0	C
SS	601676	1982-OCT-13	1997-OCT-10E	A	100.00	800	5,200	0	C
SS	601677	1982-OCT-13	1997-OCT-10E	A	100.00	800	5,200	0	C
SS	601678	1982-OCT-13	1997-OCT-10E	A	100.00	800	5,200	0	C
SS	601679	1982-OCT-13	1997-OCT-10E	A	100.00	800	5,200	0	C
SS	601680	1982-OCT-12	1997-OCT-10E	A	100.00	800	5,200	0	C
SS	601681	1982-OCT-12	1997-OCT-10E	A	100.00	800	5,200	0	C
SS	601682	1982-OCT-12	1997-OCT-10E	A	100.00	800	5,200	0	C
SS	601683	1982-OCT-12	1997-OCT-10E	A	100.00	800	5,200	0	C
SS	601684	1982-OCT-12	1997-OCT-10E	A	100.00	800	5,200	0	C
SS	601685	1982-OCT-12	1997-OCT-10E	A	100.00	800	5,200	0	C
SS	601687	1982-OCT-12	1997-OCT-10E	A	100.00	800	5,200	0	C
SS	601688	1982-OCT-12	1997-OCT-10E	A	100.00	800	5,200	0	C
SS	601689	1982-OCT-13	1997-OCT-10E	A	100.00	800	5,200	0	C
SS	601690	1982-OCT-13	1997-OCT-10E	A	100.00	800	5,200	0	C
SS	601691	1982-OCT-13	1997-OCT-10E	A	100.00	800	5,200	0	C
SS	601692	1982-OCT-13	1997-OCT-10E	A	100.00	800	5,200	0	C
SS	601693	1982-OCT-13	1997-OCT-10E	A	100.00	800	5,200	0	C
SS	601694	1982-OCT-13	1997-OCT-10E	A	100.00	800	5,200	0	C
SS	601695	1982-OCT-12	1997-OCT-10E	A	100.00	800	5,200	0	C
SS	601696	1982-OCT-12	1997-OCT-10E	A	100.00	800	5,200	0	C
SS	601697	1982-OCT-12	1997-OCT-10E	A	100.00	800	5,200	0	C
SS	601698	1982-OCT-12	1997-OCT-10E	A	100.00	800	5,200	0	C
SS	601699	1982-OCT-12	1997-OCT-10E	A	100.00	800	5,200	0	C
SS	601700	1982-OCT-12	1997-OCT-10E	A	100.00	800	5,200	0	C
SS	601701	1982-OCT-12	1997-OCT-10E	A	100.00	800	5,200	0	C
SS	601702	1982-OCT-12	1997-OCT-10E	A	100.00	800	5,200	0	C

Client: 162922 - MACMILLAN GOLD CORP.

Total Claims: 490

SS	601703	1982-OCT-12	1997-OCT-10E	A	100.00	800	5,200	0	0
SS	601704	1982-OCT-12	1997-OCT-10E	A	100.00	800	5,200	0	0
SS	601705	1982-OCT-12	1997-OCT-10E	A	100.00	800	5,200	0	0
SS	601706	1982-OCT-12	1997-OCT-10E	A	100.00	800	5,200	0	0
SS	601707	1982-OCT-13	1997-OCT-10E	A	100.00	800	5,200	0	0
SS	601708	1982-OCT-13	1997-OCT-10E	A	100.00	800	5,200	0	0
SS	601709	1982-OCT-13	1997-OCT-10E	A	100.00	800	5,200	0	0
SS	601710	1982-OCT-13	1997-OCT-10E	A	100.00	800	5,200	0	0
SS	601711	1982-OCT-13	1997-OCT-10E	A	100.00	800	5,200	0	0
SS	601712	1982-OCT-13	1997-OCT-10E	A	100.00	800	5,200	0	0
SS	601713	1982-OCT-12	1997-OCT-10E	A	100.00	800	5,200	0	0
SS	601714	1982-OCT-12	1997-OCT-10E	A	100.00	800	5,200	0	0
SS	601715	1982-OCT-12	1997-OCT-10E	A	100.00	800	5,200	0	0
SS	601716	1982-OCT-12	1997-OCT-10E	A	100.00	800	5,200	0	0
SS	601717	1982-OCT-12	1997-OCT-10E	A	100.00	800	5,200	0	0
SS	601718	1982-OCT-12	1997-OCT-10E	A	100.00	800	5,200	0	0
SS	601719	1982-OCT-12	1997-OCT-10E	A	100.00	800	5,200	0	0
SS	601720	1982-OCT-12	1997-OCT-10E	A	100.00	800	5,200	0	0
SS	601721	1982-OCT-12	1997-OCT-10E	A	100.00	800	5,200	0	0
SS	601722	1982-OCT-12	1997-OCT-10E	A	100.00	800	5,200	0	0
SS	601723	1982-OCT-12	1997-OCT-10E	A	100.00	800	5,200	0	0
	601724	1982-OCT-12	1997-OCT-10E	A	100.00	800	5,200	0	0
SS	601725	1982-OCT-12	1997-OCT-10E	A	100.00	800	5,200	0	0
SS	601726	1982-OCT-12	1997-OCT-10E	A	100.00	800	5,200	0	0
SS	601727	1982-OCT-12	1997-OCT-10E	A	100.00	800	5,200	0	0
SS	601728	1982-OCT-13	1997-OCT-10E	A	100.00	800	5,200	0	0
SS	601729	1982-OCT-13	1997-OCT-10E	A	100.00	800	5,200	0	0
SS	601730	1982-OCT-13	1997-OCT-10E	A	100.00	800	5,200	0	0
SS	601731	1982-OCT-13	1997-OCT-10E	A	100.00	800	5,200	0	0
SS	601732	1982-OCT-13	1997-OCT-10E	A	100.00	800	5,200	0	0
SS	601733	1982-OCT-13	1997-OCT-10E	A	100.00	800	5,200	0	0
SS	601734	1982-OCT-13	1997-OCT-10E	A	100.00	800	5,200	0	0
SS	601735	1982-OCT-13	1997-OCT-10E	A	100.00	800	5,200	0	0
SS	601736	1982-OCT-13	1997-OCT-10E	A	100.00	800	5,200	0	0
SS	601737	1982-OCT-13	1997-OCT-10E	A	100.00	800	5,200	0	0
SS	601738	1982-OCT-13	1997-OCT-10E	A	100.00	800	5,200	0	C
SS	601739	1982-OCT-13	1997-OCT-10E	A	100.00	800	5,200	0	C
SS	601740	1982-OCT-12	1997-OCT-10E	A	100.00	800	5,200	0	C
SS	601741	1982-OCT-12	1997-OCT-10E	A	100.00	800	5,200	0	C
SS	601742	1982-OCT-12	1997-OCT-10E	A	100.00	800	5,200	0	C
SS	601743	1982-OCT-12	1997-OCT-10E	A	100.00	800	5,200	0	C
SS	601744	1982-OCT-12	1997-OCT-10E	A	100.00	800	5,200	0	C
SS	601745	1982-OCT-12	1997-OCT-10E	A	100.00	800	5,200	0	C
SS	601746	1982-OCT-12	1997-OCT-10E	A	100.00	800	5,200	0	C
SS	601747	1982-OCT-12	1997-OCT-10E	A	100.00	800	5,200	0	C
SS	601748	1982-OCT-12	1997-OCT-10E	A	100.00	800	5,200	0	C
SS	601749	1982-OCT-12	1997-OCT-10E	A	100.00	800	5,200	0	C
	601750	1982-OCT-13	1997-OCT-10E	A	100.00	800	5,200	0	C
SS	601751	1982-OCT-13	1997-OCT-10E	A	100.00	800	5,200	0	C
SS	601752	1982-OCT-13	1997-OCT-10E	A	100.00	800	5,200	0	C
SS	601753	1982-OCT-13	1997-OCT-10E	A	100.00	800	5,200	0	C
SS	601754	1982-OCT-13	1997-OCT-10E	A	100.00	800	5,200	0	C

Client: 162922 - MACMILLAN GOLD CORP.

Total Claims: 490

SS	601755	1982-OCT-25	1997-OCT-24E	A	100.00	800	5,200	0	0
SS	601756	1982-OCT-25	1997-OCT-24E	A	100.00	800	5,200	0	0
SS	601757	1982-OCT-25	1997-OCT-24E	A	100.00	800	5,200	0	0
SS	601758	1982-OCT-25	1997-OCT-24E	A	100.00	800	5,200	0	0
SS	601759	1982-OCT-25	1997-OCT-24E	A	100.00	800	5,200	0	0
SS	601760	1982-OCT-25	1997-OCT-24E	A	100.00	800	5,200	0	0
SS	601761	1982-OCT-25	1997-OCT-24E	A	100.00	800	5,200	0	0
SS	601762	1982-OCT-08	1997-OCT-07E	A	100.00	800	5,200	0	0
SS	601763	1982-OCT-08	1997-OCT-07E	A	100.00	800	5,200	0	0
SS	601764	1982-OCT-08	1997-OCT-07E	A	100.00	800	5,200	0	0
SS	601765	1982-OCT-08	1997-OCT-07E	A	100.00	800	5,200	0	0
SS	601766	1982-OCT-08	1997-OCT-07E	A	100.00	800	5,200	0	0
SS	601767	1982-OCT-08	1997-OCT-07E	A	100.00	800	5,200	0	0
SS	601768	1982-OCT-08	1997-OCT-07E	A	100.00	800	5,200	0	0
SS	601769	1982-OCT-08	1997-OCT-07E	A	100.00	800	5,200	0	0
SS	601770	1982-OCT-08	1997-OCT-07E	A	100.00	800	5,200	0	0
SS	601771	1982-OCT-13	1997-OCT-10E	A	100.00	800	5,200	0	0
SS	601772	1982-OCT-13	1997-OCT-10E	A	100.00	800	5,200	0	0
SS	601773	1982-OCT-13	1997-OCT-10E	A	100.00	800	5,200	0	0
SS	601774	1982-OCT-13	1997-OCT-10E	A	100.00	800	5,200	0	0
SS	601775	1982-OCT-13	1997-OCT-10E	A	100.00	800	5,200	0	0
	601776	1982-OCT-25	1997-OCT-24E	A	100.00	800	5,200	0	0
	601777	1982-OCT-25	1997-OCT-24E	A	100.00	800	5,200	0	0
SS	601778	1982-OCT-25	1997-OCT-24E	A	100.00	800	5,200	0	0
SS	601779	1982-OCT-25	1997-OCT-24E	A	100.00	800	5,200	0	0
SS	601780	1982-OCT-25	1997-OCT-24E	A	100.00	800	5,200	0	0
SS	601781	1982-OCT-25	1997-OCT-24E	A	100.00	800	5,200	0	0
SS	601782	1982-OCT-25	1997-OCT-24E	A	100.00	800	5,200	0	0
SS	601784	1982-OCT-08	1997-OCT-07E	A	100.00	800	5,200	0	0
SS	601785	1982-OCT-08	1997-OCT-07E	A	100.00	800	5,200	0	0
SS	601786	1982-OCT-08	1997-OCT-07E	A	100.00	800	5,200	0	0
SS	601787	1982-OCT-08	1997-OCT-07E	A	100.00	800	5,200	0	0
SS	601788	1982-OCT-08	1997-OCT-07E	A	100.00	800	5,200	0	0
SS	601789	1982-OCT-08	1997-OCT-07E	A	100.00	800	5,200	0	0
SS	601790	1982-OCT-08	1997-OCT-07E	A	100.00	800	5,200	0	0
SS	601803	1982-OCT-13	1997-OCT-10E	A	100.00	800	5,200	0	0
SS	601804	1982-OCT-13	1997-OCT-10E	A	100.00	800	5,200	0	0
SS	601805	1982-OCT-13	1997-OCT-10E	A	100.00	800	5,200	0	0
SS	601806	1982-OCT-13	1997-OCT-10E	A	100.00	800	5,200	0	0
SS	601807	1982-OCT-13	1997-OCT-10E	A	100.00	800	5,200	0	0
SS	601808	1982-OCT-13	1997-OCT-10E	A	100.00	800	5,200	0	0
SS	601809	1982-OCT-08	1997-OCT-07E	A	100.00	800	5,200	0	0
SS	601810	1982-OCT-08	1997-OCT-07E	A	100.00	800	5,200	0	0
SS	601811	1982-OCT-08	1997-OCT-07E	A	100.00	800	5,200	0	0
SS	601812	1982-OCT-08	1997-OCT-07E	A	100.00	800	5,200	0	0
SS	601826	1982-OCT-13	1997-OCT-10E	A	100.00	800	5,200	0	0
SS	601827	1982-OCT-13	1997-OCT-10E	A	100.00	800	5,200	0	0
	601828	1982-OCT-13	1997-OCT-10E	A	100.00	800	5,200	0	0
SS	601829	1982-OCT-13	1997-OCT-10E	A	100.00	800	5,200	0	0
SS	601830	1982-OCT-13	1997-OCT-10E	A	100.00	800	5,200	0	0
SS	601831	1982-OCT-13	1997-OCT-10E	A	100.00	800	5,200	0	0
SS	601832	1982-OCT-13	1997-OCT-10E	A	100.00	800	5,200	0	0

Client: 162922 - MACMILLAN GOLD CORP.

Total Claims: 490

SS	601833	1982-OCT-08	1997-OCT-07E	A	100.00	800	5,200	0	0
SS	601834	1982-OCT-08	1997-OCT-07E	A	100.00	800	5,200	0	0
SS	601835	1982-OCT-08	1997-OCT-07E	A	100.00	800	5,200	0	0
SS	601836	1982-OCT-08	1997-OCT-07E	A	100.00	800	5,200	0	0
SS	601850	1982-OCT-13	1997-OCT-10E	A	100.00	800	5,200	0	0
SS	601851	1982-OCT-13	1997-OCT-10E	A	100.00	800	5,200	0	0
SS	601852	1982-OCT-13	1997-OCT-10E	A	100.00	800	5,200	0	0
SS	601853	1982-OCT-13	1997-OCT-10E	A	100.00	800	5,200	0	0
SS	601854	1982-OCT-13	1997-OCT-10E	A	100.00	800	5,200	0	0
SS	601855	1982-OCT-13	1997-OCT-10E	A	100.00	800	5,200	0	0
SS	601856	1982-OCT-13	1997-OCT-10E	A	100.00	800	5,200	0	0
SS	601857	1982-OCT-08	1997-OCT-07E	A	100.00	800	5,200	0	0
SS	601858	1982-OCT-08	1997-OCT-07E	A	100.00	800	5,200	0	0
SS	601872	1982-OCT-13	1997-OCT-10E	A	100.00	800	5,200	0	0
SS	601873	1982-OCT-13	1997-OCT-10E	A	100.00	800	5,200	0	0
SS	601874	1982-OCT-13	1997-OCT-10E	A	100.00	800	5,200	0	0
SS	601875	1982-OCT-13	1997-OCT-10E	A	100.00	800	5,200	0	0
SS	601876	1982-OCT-13	1997-OCT-10E	A	100.00	800	5,200	0	0
SS	601877	1982-OCT-13	1997-OCT-10E	A	100.00	800	5,200	0	0
SS	601879	1982-OCT-08	1997-OCT-07E	A	100.00	800	5,200	0	0
SS	601893	1982-OCT-13	1997-OCT-10E	A	100.00	800	5,200	0	0
SS	601894	1982-OCT-13	1997-OCT-10E	A	100.00	800	5,200	0	0
SS	601895	1982-OCT-13	1997-OCT-10E	A	100.00	800	5,200	0	0
SS	601896	1982-OCT-13	1997-OCT-10E	A	100.00	800	5,200	0	0
SS	601897	1982-OCT-13	1997-OCT-10E	A	100.00	800	5,200	0	0
SS	644598	1982-OCT-08	1997-OCT-07E	A	100.00	800	5,200	0	0
SS	644599	1982-OCT-08	1997-OCT-07E	A	100.00	800	5,200	0	0
SS	644601	1982-OCT-08	1997-OCT-07E	A	100.00	800	5,200	0	0
SS	644602	1982-OCT-08	1997-OCT-07E	A	100.00	800	5,200	0	0
SS	644603	1982-OCT-08	1997-OCT-07E	A	100.00	800	5,200	0	0
SS	644604	1982-OCT-08	1997-OCT-07E	A	100.00	800	5,200	0	0
SS	644608	1982-OCT-08	1997-OCT-07E	A	100.00	800	5,200	0	0
SS	644609	1982-OCT-08	1997-OCT-07E	A	100.00	800	5,200	0	0
SS	644610	1982-OCT-08	1997-OCT-07E	A	100.00	800	5,200	0	0
SS	644611	1982-OCT-08	1997-OCT-07E	A	100.00	800	5,200	0	0
SS	644612	1982-OCT-08	1997-OCT-07E	A	100.00	800	5,200	0	0
SS	644613	1982-OCT-08	1997-OCT-07E	A	100.00	800	5,200	0	0
SS	644614	1982-OCT-08	1997-OCT-07E	A	100.00	800	5,200	0	0
SS	644615	1982-OCT-08	1997-OCT-07E	A	100.00	800	5,200	0	0
SS	644616	1982-OCT-08	1997-OCT-07E	A	100.00	800	5,200	0	0
SS	644617	1982-OCT-08	1997-OCT-07E	A	100.00	800	5,200	0	0
SS	644618	1982-OCT-08	1997-OCT-07E	A	100.00	800	5,200	0	0
SS	644619	1982-OCT-08	1997-OCT-07E	A	100.00	800	5,200	0	0
SS	644620	1982-OCT-08	1997-OCT-07E	A	100.00	800	5,200	0	0
SS	644621	1982-OCT-08	1997-OCT-07E	A	100.00	800	5,200	0	0
SS	644622	1982-OCT-08	1997-OCT-07E	A	100.00	800	5,200	0	0
SS	644626	1982-OCT-08	1997-OCT-07E	A	100.00	800	5,200	0	0
SS	644627	1982-OCT-08	1997-OCT-07E	A	100.00	800	5,200	0	0
SS	644628	1982-OCT-08	1997-OCT-07E	A	100.00	800	5,200	0	0
SS	644629	1982-OCT-08	1997-OCT-07E	A	100.00	800	5,200	0	0
SS	722575	1983-DEC-30	1997-DEC-30E	A	100.00	800	4,800	0	0
SS	722576	1983-DEC-30	1997-DEC-30E	A	100.00	800	4,800	0	0

Client: 162922 - MACMILLAN GOLD CORP.

Total Claims: 490

SS	722577	1983-DEC-30	1997-DEC-30E	A	100.00	800	4,800	0	0
SS	722578	1983-DEC-30	1997-DEC-30E	A	100.00	800	4,800	0	0
SS	722579	1983-DEC-30	1997-DEC-30E	A	100.00	800	4,800	0	0
SS	722581	1983-DEC-30	1997-DEC-30E	A	100.00	800	4,800	0	0
SS	722582	1983-DEC-30	1997-DEC-30E	A	100.00	800	4,800	0	0
SS	722583	1983-DEC-30	1997-DEC-30	A	100.00	400	5,200	0	0
SS	722584	1983-DEC-30	1997-DEC-30	A	100.00	400	5,200	0	0
SS	722585	1983-DEC-30	1997-DEC-30	A	100.00	400	5,200	0	0
SS	722586	1983-DEC-30	1997-DEC-30	A	100.00	400	5,200	0	0
SS	722587	1983-DEC-30	1997-DEC-30	A	100.00	400	5,200	0	0
SS	722588	1983-DEC-30	1997-DEC-30	A	100.00	400	5,200	361	0
SS	722589	1983-DEC-30	1997-DEC-30E	A	100.00	800	4,800	0	0
SS	722590	1983-DEC-30	1997-DEC-30E	A	100.00	800	4,800	0	0
SS	872119	1985-NOV-04	1997-NOV-04	A	100.00	400	4,400	0	0
SS	872120	1985-NOV-04	1997-NOV-04	A	100.00	400	4,400	0	0
SS	872121	1985-NOV-04	1997-NOV-04	A	100.00	400	4,400	0	0
SS	872122	1985-NOV-04	1997-NOV-04	A	100.00	400	4,400	0	0
SS	872123	1985-NOV-04	1997-NOV-04	A	100.00	400	4,400	0	0
SS	872124	1985-NOV-04	1997-NOV-04	A	100.00	400	4,400	0	0
SS	872125	1985-NOV-04	1997-NOV-04	A	100.00	400	4,400	0	0
SS	872126	1985-NOV-04	1997-NOV-04	A	100.00	400	4,400	0	0
SS	872127	1985-NOV-04	1997-NOV-04	A	100.00	400	4,400	0	0
SS	872128	1985-NOV-04	1997-NOV-04	A	100.00	400	4,400	0	0
SS	872134	1985-NOV-04	1997-NOV-04	A	100.00	400	4,400	0	0
SS	872135	1985-NOV-04	1997-NOV-04	A	100.00	400	4,400	0	0
SS	872136	1985-NOV-04	1997-NOV-04	A	100.00	400	4,400	0	0
SS	872137	1985-NOV-04	1997-NOV-04	A	100.00	400	4,400	0	0
SS	872138	1985-NOV-04	1997-NOV-04	A	100.00	400	4,400	0	0
SS	872139	1985-NOV-04	1997-NOV-04	A	100.00	400	4,400	0	0
SS	872140	1985-NOV-04	1997-NOV-04	A	100.00	400	4,400	0	0
SS	872141	1985-NOV-04	1997-NOV-04	A	100.00	400	4,400	0	0
SS	872142	1985-NOV-04	1997-NOV-04	A	100.00	400	4,400	0	0
SS	872143	1985-NOV-04	1997-NOV-04	A	100.00	400	4,400	0	0
SS	872144	1985-NOV-04	1997-NOV-04	A	100.00	400	4,400	0	0
SS	872145	1985-NOV-04	1997-NOV-04	A	100.00	400	4,400	0	0
SS	924720	1986-NOV-12	1997-NOV-12	A	100.00 Y	400	4,000	0	400
SS	924721	1986-NOV-12	1997-NOV-12	A	100.00 Y	400	4,000	0	400

Township: ST. GERMAIN

Claim Number	Recording Date	Due Date	Claim Status	Percent /Option	Work Required	Work Applied	Total Reserve	Claim Bank	
SS	1087725	1988-NOV-24	1997-NOV-24	A	100.00	400	3,200	0	1,200
SS	644600	1982-OCT-08	1997-OCT-07E	A	100.00	800	5,200	0	0
SS	644605	1982-OCT-08	1997-OCT-07E	A	100.00	800	5,200	0	0
SS	644606	1982-OCT-08	1997-OCT-07E	A	100.00	800	5,200	0	0
SS	644607	1982-OCT-08	1997-OCT-07E	A	100.00	800	5,200	0	0
SS	644648	1982-OCT-08	1997-OCT-07E	A	100.00	800	5,200	0	0
SS	644649	1982-OCT-08	1997-OCT-07E	A	100.00	800	5,200	0	0
SS	644650	1982-OCT-08	1997-OCT-07E	A	100.00	800	5,200	0	0
SS	644651	1982-OCT-08	1997-OCT-07E	A	100.00	800	5,200	0	0

Client: 162922 - MACMILLAN GOLD CORP.

Total Claims: 490

SS	644652	1982-OCT-08	1997-OCT-07E	A	100.00	800	5,200	0	0
SS	644653	1982-OCT-08	1997-OCT-07E	A	100.00	800	5,200	0	0
SS	644654	1982-OCT-08	1997-OCT-07E	A	100.00	800	5,200	0	0
SS	644655	1982-OCT-08	1997-OCT-07E	A	100.00	800	5,200	0	0
SS	644656	1982-OCT-08	1997-OCT-07E	A	100.00	800	5,200	0	0
SS	644657	1982-OCT-08	1997-OCT-07E	A	100.00	800	5,200	0	0
SS	644658	1982-OCT-08	1997-OCT-07E	A	100.00	800	5,200	0	0
SS	644659	1982-OCT-08	1997-OCT-07E	A	100.00	800	5,200	0	0
SS	644660	1982-OCT-08	1997-OCT-07E	A	100.00	800	5,200	0	0
SS	644661	1982-OCT-08	1997-OCT-07E	A	100.00	800	5,200	0	0
SS	644663	1982-OCT-08	1997-OCT-07E	A	100.00	800	5,200	0	0
SS	644664	1982-OCT-08	1997-OCT-07E	A	100.00	800	5,200	0	0
SS	644665	1982-OCT-08	1997-OCT-07E	A	100.00	800	5,200	0	0
SS	644666	1982-OCT-08	1997-OCT-07E	A	100.00	800	5,200	0	0
SS	644667	1982-OCT-08	1997-OCT-07E	A	100.00	800	5,200	0	0
SS	644668	1982-OCT-08	1997-OCT-07E	A	100.00	800	5,200	0	0
SS	644669	1982-OCT-08	1997-OCT-07E	A	100.00	800	5,200	0	0
SS	644670	1982-OCT-08	1997-OCT-07E	A	100.00	800	5,200	0	0
SS	644671	1982-OCT-08	1997-OCT-07E	A	100.00	800	5,200	0	0
SS	644672	1982-OCT-08	1997-OCT-07E	A	100.00	800	5,200	0	0
SS	644673	1982-OCT-08	1997-OCT-07E	A	100.00	800	5,200	0	0
SS	644674	1982-OCT-08	1997-OCT-07E	A	100.00	800	5,200	0	0
	644675	1982-OCT-08	1997-OCT-07E	A	100.00	800	5,200	16,593	0
SS	644676	1982-OCT-08	1997-OCT-07E	A	100.00	800	5,200	0	0
SS	644677	1982-OCT-08	1997-OCT-07E	A	100.00	800	5,200	0	0
SS	644678	1982-OCT-08	1997-OCT-07E	A	100.00	800	5,200	0	0
SS	644679	1982-OCT-08	1997-OCT-07E	A	100.00	800	5,200	0	0
SS	644680	1982-OCT-08	1997-OCT-07E	A	100.00	800	5,200	0	0
SS	644681	1982-OCT-08	1997-OCT-07E	A	100.00	800	5,200	0	0
SS	661003	1982-OCT-08	1997-OCT-07E	A	100.00	800	5,200	0	0
SS	661004	1982-OCT-08	1997-OCT-07E	A	100.00	800	5,200	0	0
SS	661005	1982-OCT-08	1997-OCT-07E	A	100.00	800	5,200	0	0
SS	661008	1982-OCT-08	1997-OCT-07E	A	100.00	800	5,200	0	0
SS	661009	1982-OCT-08	1997-OCT-07E	A	100.00	800	5,200	0	0
SS	661010	1982-OCT-08	1997-OCT-07E	A	100.00	800	5,200	0	0
SS	661051	1982-OCT-08	1997-OCT-07E	A	100.00	800	5,200	0	0
SS	661052	1982-OCT-08	1997-OCT-07E	A	100.00	800	5,200	0	0
SS	661056	1982-OCT-08	1997-OCT-07E	A	100.00	800	5,200	0	0
SS	661057	1982-OCT-08	1997-OCT-07E	A	100.00	800	5,200	0	0
SS	661061	1982-OCT-08	1997-OCT-07E	A	100.00	800	5,200	0	0
SS	661062	1982-OCT-08	1997-OCT-07E	A	100.00	800	5,200	0	0
SS	661066	1982-OCT-08	1997-OCT-07E	A	100.00	800	5,200	0	0
SS	661067	1982-OCT-08	1997-OCT-07E	A	100.00	800	5,200	0	0
SS	661071	1982-OCT-08	1997-OCT-07E	A	100.00	800	5,200	0	0
SS	661072	1982-OCT-08	1997-OCT-07E	A	100.00	800	5,200	0	0
SS	661080	1982-OCT-08	1997-OCT-07E	A	100.00	800	5,200	0	0
SS	661088	1982-OCT-08	1997-OCT-07E	A	100.00	800	5,200	0	0
	661089	1982-OCT-08	1997-OCT-07E	A	100.00	800	5,200	0	0
	859283	1985-OCT-30	1997-OCT-30	A	100.00	400	4,400	0	0
SS	859284	1985-OCT-30	1997-OCT-30	A	100.00	400	4,400	0	0
SS	859285	1985-OCT-30	1997-OCT-30	A	100.00	400	4,400	0	0
SS	859286	1985-OCT-30	1997-OCT-30	A	100.00	400	4,400	0	0

Client: 162922 - MACMILLAN GOLD CORP.

Total Claims: 490

SS	859287	1985-OCT-30	1997-OCT-30	A	100.00	400	4,400	0	0
SS	859288	1985-OCT-30	1997-OCT-30	A	100.00	400	4,400	0	0
SS	859289	1985-OCT-30	1997-OCT-30	A	100.00	400	4,400	0	0
SS	859290	1985-OCT-30	1997-OCT-30	A	100.00	400	4,400	0	0
SS	859291	1985-OCT-30	1997-OCT-30	A	100.00	400	4,400	0	0
SS	859292	1985-OCT-30	1997-OCT-30	A	100.00	400	4,400	0	0
SS	859293	1985-OCT-30	1997-OCT-30	A	100.00	400	4,400	0	0
SS	859294	1985-OCT-30	1997-OCT-30	A	100.00	400	4,400	0	0
SS	859295	1985-OCT-30	1997-OCT-30	A	100.00	400	4,400	0	0
SS	859296	1985-OCT-30	1997-OCT-30	A	100.00	400	4,400	0	0
SS	859297	1985-OCT-30	1997-OCT-30	A	100.00	400	4,400	0	0
SS	859298	1985-OCT-30	1997-OCT-30	A	100.00	400	4,400	0	0
SS	859299	1985-OCT-30	1997-OCT-30	A	100.00	400	4,400	0	0
SS	859300	1985-OCT-30	1997-OCT-30	A	100.00	400	4,400	0	0
SS	859301	1985-OCT-30	1997-OCT-30	A	100.00	400	4,400	0	0
SS	859302	1985-OCT-30	1997-OCT-30	A	100.00	400	4,400	0	0
SS	859303	1985-OCT-30	1997-OCT-30	A	100.00	400	4,400	320	0
SS	859304	1985-OCT-30	1997-OCT-30	A	100.00	400	4,400	0	0
SS	859305	1985-OCT-30	1997-OCT-30	A	100.00	400	4,400	0	0
SS	859306	1985-OCT-30	1997-OCT-30	A	100.00	400	4,400	0	0
SS	859307	1985-OCT-30	1997-OCT-30	A	100.00	400	4,400	0	0
SS	859308	1985-OCT-30	1997-OCT-30	A	100.00	400	4,400	0	0
SS	859309	1985-OCT-30	1997-OCT-30	A	100.00	400	4,400	0	0
SS	859310	1985-OCT-30	1997-OCT-30	A	100.00	400	4,400	0	0
SS	859311	1985-OCT-30	1997-OCT-30	A	100.00	400	4,400	0	0
SS	859312	1985-OCT-30	1997-OCT-30	A	100.00	400	4,400	0	0
SS	859313	1985-OCT-30	1997-OCT-30	A	100.00	400	4,400	0	0
SS	859314	1985-OCT-30	1997-OCT-30	A	100.00	400	4,400	0	0
SS	859315	1985-OCT-30	1997-OCT-30	A	100.00	400	4,400	0	0
SS	859316	1985-OCT-30	1997-OCT-30	A	100.00	400	4,400	0	0
SS	859317	1985-OCT-30	1997-OCT-30	A	100.00	400	4,400	0	0
SS	859318	1985-OCT-30	1997-OCT-30	A	100.00	400	4,400	0	0
SS	859319	1985-OCT-30	1997-OCT-30	A	100.00	400	4,400	0	0
SS	859320	1985-OCT-30	1997-OCT-30	A	100.00	400	4,400	0	0
SS	859321	1985-OCT-30	1997-OCT-30	A	100.00	400	4,400	0	0
SS	859322	1985-OCT-30	1997-OCT-30	A	100.00	400	4,400	0	0
SS	859323	1985-OCT-30	1997-OCT-30	A	100.00	400	4,400	0	0
SS	859324	1985-OCT-30	1997-OCT-30	A	100.00	400	4,400	0	0
SS	859325	1985-OCT-30	1997-OCT-30	A	100.00	400	4,400	0	0
SS	859326	1985-OCT-30	1997-OCT-30	A	100.00	400	4,400	0	0
SS	859327	1985-OCT-30	1997-OCT-30	A	100.00	400	4,400	0	0
SS	859328	1985-OCT-30	1997-OCT-30	A	100.00	400	4,400	0	0
SS	859329	1985-OCT-30	1997-OCT-30	A	100.00	400	4,400	0	0
SS	859330	1985-OCT-30	1997-OCT-30	A	100.00	400	4,400	0	0
SS	859331	1985-OCT-30	1997-OCT-30	A	100.00	400	4,400	0	0
SS	859332	1985-OCT-30	1997-OCT-30	A	100.00	400	4,400	0	0
SS	859333	1985-OCT-30	1997-OCT-30	A	100.00	400	4,400	21	0
SS	859334	1985-OCT-30	1997-OCT-30	A	100.00	400	4,400	0	0
SS	859335	1985-OCT-30	1997-OCT-30	A	100.00	400	4,400	0	0
SS	859336	1985-OCT-30	1997-OCT-30	A	100.00	400	4,400	0	0
SS	859337	1985-OCT-30	1997-OCT-30	A	100.00	400	4,400	0	0
SS	859338	1985-OCT-30	1997-OCT-30	A	100.00	400	4,400	0	0

Client: 162922 - MACMILLAN GOLD CORP.

Total Claims: 490

SS	859339	1985-OCT-30	1997-OCT-30	A	100.00	400	4,400	0	0
SS	859340	1985-OCT-30	1997-OCT-30	A	100.00	400	4,400	0	0
SS	859341	1985-OCT-30	1997-OCT-30	A	100.00	400	4,400	0	0
SS	859342	1985-OCT-30	1997-OCT-30	A	100.00	400	4,400	0	0
SS	859343	1985-OCT-30	1997-OCT-30	A	100.00	400	4,400	0	0
SS	859344	1985-OCT-30	1997-OCT-30	A	100.00	400	4,400	0	0
SS	859345	1985-OCT-30	1997-OCT-30	A	100.00	400	4,400	0	0
SS	859346	1985-OCT-30	1997-OCT-30	A	100.00	400	4,400	0	0
SS	859347	1985-OCT-30	1997-OCT-30	A	100.00	400	4,400	0	0
SS	859348	1985-OCT-30	1997-OCT-30	A	100.00	400	4,400	0	0
SS	859349	1985-OCT-30	1997-OCT-30	A	100.00	400	4,400	0	0
SS	859350	1985-OCT-30	1997-OCT-30	A	100.00	400	4,400	0	0
SS	859351	1985-OCT-30	1997-OCT-30	A	100.00	400	4,400	0	0
SS	859352	1985-OCT-30	1997-OCT-30	A	100.00	400	4,400	0	0
SS	859353	1985-OCT-30	1997-OCT-30	A	100.00	400	4,400	0	0
SS	859354	1985-OCT-30	1997-OCT-30	A	100.00	400	4,400	0	0
SS	859356	1985-OCT-30	1997-OCT-30	A	100.00	400	4,400	0	0
SS	859357	1985-OCT-30	1997-OCT-30	A	100.00	400	4,400	0	0
SS	859358	1985-OCT-30	1997-OCT-30	A	100.00	400	4,400	0	0
SS	859359	1985-OCT-30	1997-OCT-30	A	100.00	400	4,400	0	0
SS	859360	1985-OCT-30	1997-OCT-30	A	100.00	400	4,400	0	0
SS	859361	1985-OCT-30	1997-OCT-30	A	100.00	400	4,400	0	0
SS	859362	1985-OCT-30	1997-OCT-30	A	100.00	400	4,400	0	0
SS	859363	1985-OCT-30	1997-OCT-30	A	100.00	400	4,400	0	0
SS	859364	1985-OCT-30	1997-OCT-30	A	100.00	400	4,400	0	0
SS	859365	1985-OCT-30	1997-OCT-30	A	100.00	400	4,400	0	0
SS	859366	1985-OCT-30	1997-OCT-30	A	100.00	400	4,400	0	0
SS	859367	1985-OCT-30	1997-OCT-30	A	100.00	400	4,400	0	0
SS	859368	1985-OCT-30	1997-OCT-30	A	100.00	400	4,400	0	0
SS	859369	1985-OCT-30	1997-OCT-30	A	100.00	400	4,400	0	0
SS	859370	1985-OCT-30	1997-OCT-30	A	100.00	400	4,400	0	0
SS	859371	1985-OCT-30	1997-OCT-30	A	100.00	400	4,400	0	0
SS	859372	1985-OCT-30	1997-OCT-30	A	100.00	400	4,400	0	0
SS	859373	1985-OCT-30	1997-OCT-30	A	100.00	400	4,400	0	0
SS	859374	1985-OCT-30	1997-OCT-30	A	100.00	400	4,400	0	0
SS	859375	1985-OCT-30	1997-OCT-30	A	100.00	400	4,400	0	0
SS	859376	1985-OCT-30	1997-OCT-30	A	100.00	400	4,400	0	0
SS	860923	1986-JAN-23	1998-JAN-23	A	100.00	400	4,400	0	0
SS	860924	1986-JAN-23	1998-JAN-23	A	100.00	400	4,400	0	0
SS	860925	1986-JAN-23	1998-JAN-23	A	100.00	400	4,400	0	0
SS	860926	1986-JAN-23	1998-JAN-23	A	100.00	400	4,400	0	0
SS	860927	1986-JAN-23	1998-JAN-23	A	100.00	400	4,400	0	0
SS	860928	1986-JAN-23	1998-JAN-23	A	100.00	400	4,400	0	0
SS	860929	1986-JAN-23	1998-JAN-23	A	100.00	400	4,400	0	0
SS	860930	1986-JAN-23	1998-JAN-23	A	100.00	400	4,400	0	0
SS	860931	1986-JAN-23	1998-JAN-23	A	100.00	400	4,400	0	0
SS	860932	1986-JAN-23	1998-JAN-23	A	100.00	400	4,400	0	0
SS	860933	1986-JAN-23	1998-JAN-23	A	100.00	400	4,400	0	0
SS	860934	1986-JAN-23	1998-JAN-23	A	100.00	400	4,400	0	0
SS	860935	1986-JAN-23	1998-JAN-23	A	100.00	400	4,400	0	0
SS	860936	1986-JAN-23	1998-JAN-23	A	100.00	400	4,400	0	0
SS	860937	1986-JAN-23	1998-JAN-23	A	100.00	400	4,400	0	0

Client: 162922 - MACMILLAN GOLD CORP.

Total Claims: 490

SS	860938	1986-JAN-23	1998-JAN-23	A	100.00	400	4,400	0	C
SS	860939	1986-JAN-23	1998-JAN-23	A	100.00	400	4,400	0	C
SS	860940	1986-JAN-23	1998-JAN-23	A	100.00	400	4,400	0	C
SS	860941	1986-JAN-23	1998-JAN-23	A	100.00	400	4,400	0	C
SS	860942	1986-JAN-23	1998-JAN-23	A	100.00	400	4,400	0	C
SS	860943	1986-JAN-23	1998-JAN-23	A	100.00	400	4,400	0	C
SS	860944	1986-JAN-23	1998-JAN-23	A	100.00	400	4,400	0	C
SS	860945	1986-JAN-23	1998-JAN-23	A	100.00	400	4,400	0	C
SS	860946	1986-JAN-23	1998-JAN-23	A	100.00	400	4,400	0	C
SS	860947	1986-JAN-23	1998-JAN-23	A	100.00	400	4,400	0	C
SS	860948	1986-JAN-23	1998-JAN-23	A	100.00	400	4,400	0	C
SS	860949	1986-JAN-23	1998-JAN-23	A	100.00	400	4,400	0	C
SS	860950	1986-JAN-23	1998-JAN-23	A	100.00	400	4,400	0	C
SS	860951	1986-JAN-23	1998-JAN-23	A	100.00	400	4,400	0	C
SS	860952	1986-JAN-23	1998-JAN-23	A	100.00	400	4,400	0	C
SS	860953	1986-JAN-23	1998-JAN-23	A	100.00	400	4,400	0	C
SS	860954	1986-JAN-23	1998-JAN-23	A	100.00	400	4,400	0	C
SS	860955	1986-JAN-23	1998-JAN-23	A	100.00	400	4,400	0	C
SS	860956	1986-JAN-23	1998-JAN-23	A	100.00	400	4,400	0	C
SS	860957	1986-JAN-23	1998-JAN-23	A	100.00	400	4,400	0	C
SS	860958	1986-JAN-23	1998-JAN-23	A	100.00	400	4,400	0	C
SS	860959	1986-JAN-23	1998-JAN-23	A	100.00	400	4,400	0	C
SS	860960	1986-JAN-23	1998-JAN-23	A	100.00	400	4,400	0	C
SS	860961	1986-JAN-23	1998-JAN-23	A	100.00	400	4,400	63	C
SS	860962	1986-JAN-23	1998-JAN-23	A	100.00	400	4,400	0	C
SS	860963	1986-JAN-23	1998-JAN-23	A	100.00	400	4,400	0	C
SS	860964	1986-JAN-23	1998-JAN-23	A	100.00	400	4,400	0	C
SS	860965	1986-JAN-23	1998-JAN-23	A	100.00	400	4,400	0	C
SS	860966	1986-JAN-23	1998-JAN-23	A	100.00	400	4,400	0	C
SS	860967	1986-JAN-23	1998-JAN-23	A	100.00	400	4,400	0	C
SS	860968	1986-JAN-23	1998-JAN-23	A	100.00	400	4,400	0	C
SS	860969	1986-JAN-23	1998-JAN-23	A	100.00	400	4,400	0	C
SS	860970	1986-JAN-23	1998-JAN-23	A	100.00	400	4,400	0	C

*** End of Report ***

APPENDIX B - CERTIFICATES OF ANALYSES



XRAL Laboratories
A Division of SGS Canada Inc.

1885 Leslie Street
Don Mills, Ontario
Canada M3B 3J4
Tel: (416) 445-5755
Fax: (416) 445-4152

CERTIFICATE OF ANALYSIS

Work Order: 017090

To: Mishibishu Gold Corp
Attn: Jim Millard
Box 87
Wawa
Ontario
P0S 1K0

Date : 25/09/97

Copy 1 to :

Copy 2 to :

P.O. No. :
Project No. : Mishibishu M1
No. of Samples : 64 Rocks
Date Submitted : 03/09/97
Report Comprises : Cover Sheet plus
Pages 1 to 2

Distribution of unused material:

Pulps: Pulps - no instructions
Rejects: Rejects - no instructions

Certified By :

Dr. Hugh de Souza, General Manager
XRAL Laboratories

Report Footer: L.N.R. = Listed not received I.S. = Insufficient Sample
n.a. = Not applicable -- = No result
I.N.F. = Composition of this sample makes detection impossible by this method
M after a result denotes ppb to ppm conversion, % denotes ppm to % conversion

XRAL**XRAL Laboratories**
A Division of SGS Canada Inc.

Work Order: 017090

Date: 25/09/97

FINAL

Page 1 of 2

Element. Method. Det.Lim. Units.	Au FA30/1 1 ppb	Au FAG30 0.03 g/mt
125501	17	n.a.
125502	35	n.a.
125503	21	n.a.
125504	25	n.a.
125505	21	n.a.
125506	24	n.a.
125507	85	n.a.
125508	277	n.a.
125509	2	n.a.
125510	60	n.a.
125511	21	n.a.
125512	9	n.a.
125513	> 10000	14.8
125514	3150	3.05
125515	2770	2.71
125516	549	n.a.
125517	> 10000	13.6
125518	3	n.a.
125519	617	n.a.
125520	5350	5.11
125521	9	n.a.
125522	1840	2.06
125523	707	n.a.
125524	5390	5.35
125525	4050	3.74
125526	> 10000	44.5
125527	3720	3.77
125528	607	n.a.
125529	56	n.a.
125530	288	n.a.
125531	1390	1.44
125532	19	n.a.
125533	15	n.a.
125534	12	n.a.
125535	108	n.a.
125536	174	n.a.
125537	88	n.a.
125538	2370	2.57
125539	4920	5.28
125540	> 10000	14.6
125541	5810	6.24
125542	3500	3.81
125543	2950	2.95
125544	2540	2.33
125545	4080	3.94



XRAL Laboratories
A Division of SGS Canada Inc.

Work Order: 017090

Date: 25/09/97

FINAL

Page 2 of 2

Element. Method. Det.Lim. Units.	Au FA30/1 1 ppb	Au FAG30 0.03 g/mt
125546	2270	2.23
125547	> 10000	14.7
125548	891	n.a.
125549	146	n.a.
125550	2510	2.33
125551	7270	7.75
125552	124	n.a.
125553	549	n.a.
125554	87	n.a.
125555	295	n.a.
125556	2310	2.26
125557	74	n.a.
125558	143	n.a.
125559	1300	1.17
125560	31	n.a.
125561	16	n.a.
125562	1030	1.06
125563	> 10000	23.4
125564	91	n.a.
*Dup 125501	19	n.a.
*Dup 125513	> 10000	n.a.
*Dup 125525	3940	n.a.
*Dup 125537	81	n.a.
*Dup 125549	143	n.a.
*Dup 125561	14	n.a.



XRAL Laboratories
A Division of SGS Canada Inc.

1885 Leslie Street
Don Mills, Ontario
Canada M3B 3J4
Tel: (416) 445-5755
Fax: (416) 445-4152

CERTIFICATE OF ANALYSIS

Work Order: 017140

To: **Mishibishu Gold Corp**
Attn: **Jim Millard**
Box 87
Wawa
Ontario
POS 1K0

Date : 25/09/97

Copy 1 to :


Copy 2 to :

P.O. No. :
Project No. : Mishibishu M1
No. of Samples : 107 ROCKS
Date Submitted : 05/09/97
Report Comprises : Cover Sheet plus
Pages 1 to 3

Distribution of unused material:

Pulps: Pulps - no instructions
Rejects: Rejects - no instructions

Certified By :



Dr. Hugh de Souza, General Manager
XRAL Laboratories

Report Footer: L.N.R. = Listed not received I.S. = Insufficient Sample
n.a. = Not applicable -- = No result
I.N.F. = Composition of this sample makes detection impossible by this method
M after a result denotes ppb to ppm conversion, % denotes ppm to % conversion



XRAL Laboratories
A Division of SGS Canada Inc.

Work Order: 017140

Date: 25/09/97

FINAL

Page 1 of 3

Element. Method. Det.Lim. Units.	Au FA30/5 1 ppb	Au FAG30 0.03 g/mt
125565	70	n.a.
125566	1530	1.44
125567	> 10000	10.9
125568	147	n.a.
125569	461	n.a.
125570	97	n.a.
125571	42	n.a.
125572	78	n.a.
125573	2270	2.47
125574	> 10000	14.9
125575	> 10000	11.7
125576	121	n.a.
125577	92	n.a.
125578	65	n.a.
125579	22	n.a.
125580	26	n.a.
125581	185	n.a.
125582	231	n.a.
125583	2290	2.23
125584	126	n.a.
125585	70	n.a.
125586	497	n.a.
125587	2490	2.54
125588	63	n.a.
125589	8050	8.26
125590	617	n.a.
125591	100	n.a.
125592	1830	1.82
125593	1100	1.20
125594	2650	2.57
125595	154	n.a.
125596	> 10000	21.5
125597	> 10000	12.3
125598	136	n.a.
125599	508	n.a.
125600	30	n.a.
125601	26	n.a.
125602	2	n.a.
125603	3	n.a.
125604	7	n.a.
125605	335	n.a.
125606	685	n.a.
125607	7920	8.16
125608	155	n.a.
125609	15	n.a.



XRAL Laboratories
A Division of SGS Canada Inc.

Work Order: 017140

Date: 25/09/97

FINAL

Page 2 of 3

Element. Method. Det.Lim. Units.	Au FA30/5 1 ppb	Au FAG30 0.03 g/mt
125610	3	n.a.
125611	70	n.a.
125612	376	n.a.
125613	15	n.a.
125614	294	n.a.
125615	54	n.a.
125616	63	n.a.
125617	51	n.a.
125618	1300	1.23
125619	1150	1.30
125620	3410	3.33
125621	5130	5.14
125622	6640	6.38
125623	> 10000	15.8
125624	33	n.a.
125625	32	n.a.
125626	151	n.a.
125627	160	n.a.
125628	181	n.a.
125629	615	n.a.
125630	52	n.a.
125631	13	n.a.
125632	7	n.a.
125633	9	n.a.
125634	721	n.a.
125635	3970	4.05
125636	96	n.a.
125637	1030	1.37
125638	11	n.a.
125639	170	n.a.
125640	97	n.a.
125641	1770	1.85
125642	789	n.a.
125643	2900	2.78
125644	326	n.a.
125645	14	n.a.
125646	114	n.a.
125647	446	n.a.
125648	959	n.a.
125649	17	n.a.
125650	24	n.a.
125651	1350	1.41
125652	881	n.a.
125653	1050	1.13
125654	201	n.a.



XRAL Laboratories
A Division of SGS Canada Inc.

Work Order: 017140

Date: 25/09/97

FINAL

Page 3 of 3

Element. Method. Det.Lim. Units.	Au FA30/5 1 ppb	Au FAG30 0.03 g/mt
125655	4	n.a.
125656	20	n.a.
125657	33	n.a.
125658	10	n.a.
125659	12	n.a.
125660	139	n.a.
125661	173	n.a.
125662	25	n.a.
125663	53	n.a.
125664	31	n.a.
125665	2	n.a.
125666	1	n.a.
125667	373	n.a.
125668	1410	1.82
125669	100	n.a.
125670	14	n.a.
125671	34	n.a.
*Dup 125565	74	n.a.
*Dup 125577	77	n.a.
*Dup 125589	8440	n.a.
*Dup 125601	36	n.a.
*Dup 125613	9	n.a.
*Dup 125625	42	n.a.
*Dup 125637	1190	n.a.
*Dup 125649	22	n.a.
*Dup 125661	215	n.a.



XRAL Laboratories
A Division of SGS Canada Inc.

1885 Leslie Street
Don Mills, Ontario
Canada M3B 3J4
Tel: (416) 445-5755
Fax: (416) 445-4152

CERTIFICATE OF ANALYSIS

Work Order: 01. 192

To: Mishibishu Gold Corp
Attn: Jim Millard
Box 87
Wawa
Ontario
POS 1K0

Date : 22/09/97

Copy 1 to :

Copy 2 to :

P.O. No. :
Project No. : Mishibishu M1
No. of Samples : 77 Rock
Date Submitted : 10/09/97
Report Comprises : Cover Sheet plus
Pages 1 to 2

Distribution of unused material:

Pulps: Pulps - no instructions
Rejects: Rejects - no instructions

Certified By :

Dr. Hugh de Souza, General Manager
XRAL Laboratories

Report Footer: L.N.R. = Listed not received I.S. = Insufficient Sample
n.a. = Not applicable -- = No result
I.N.F. = Composition of this sample makes detection impossible by this method
M after a result denotes ppb to ppm conversion, % denotes ppm to % conversion



XRAL Laboratories
A Division of SGS Canada Inc.

Work Order: 017192

Date: 22/09/97

FINAL

Page 1 of 2

Element. Method. Det.Lim. Units.	Au FA30/1 1 ppb	Au FAG30 0.03 g/mt
125672	19	n.a.
125673	2	n.a.
125674	323	n.a.
125675	121	n.a.
125676	8	n.a.
125677	9	n.a.
125678	12	n.a.
125679	253	n.a.
125680	16	n.a.
125681	8	n.a.
125682	6	n.a.
125683	20	n.a.
125684	23	n.a.
125685	8	n.a.
125686	28	n.a.
125687	11	n.a.
125688	48	n.a.
125689	142	n.a.
125690	9	n.a.
125691	5	n.a.
125692	2	n.a.
125693	8	n.a.
125694	12	n.a.
125695	6	n.a.
125696	48	n.a.
125697	105	n.a.
125698	434	n.a.
125699	17	n.a.
125700	8	n.a.
125701	188	n.a.
125702	28	n.a.
125703	20	n.a.
125704	349	n.a.
125705	7	n.a.
125706	43	n.a.
125707	4	n.a.
125708	6	n.a.
125709	20	n.a.
125710	574	n.a.
125711	3	n.a.
125712	2	n.a.
125713	184	n.a.
125714	58	n.a.
125715	103	n.a.
125716	46	n.a.

Work Order: 017192

Date: 22/09/97

FINAL

Page 2 of 2

Element. Method. Det.Lim. Units.	Au FA30/1 1 ppb	Au FAG30 0.03 g/mt
125717	144	n.a.
125718	31	n.a.
125719	4	n.a.
125720	215	n.a.
125721	12	n.a.
125722	374	n.a.
125723	245	n.a.
125724	44	n.a.
125725	58	n.a.
125726	311	n.a.
125727	134	n.a.
125728	16	n.a.
125729	10	n.a.
125730	37	n.a.
125731	5	n.a.
125732	58	n.a.
125733	20	n.a.
125734	24	n.a.
125735	46	n.a.
125736	207	n.a.
125737	66	n.a.
125738	359	n.a.
125739	285	n.a.
125740	271	n.a.
125741	1100	1.20
125742	559	n.a.
125743	1630	1.71
125744	2960	3.19
125745	857	n.a.
125746	642	n.a.
125747	2200	2.13
125748	1680	1.54
*Dup 125672	20	n.a.
*Dup 125684	21	n.a.
*Dup 125696	55	n.a.
*Dup 125708	7	n.a.
*Dup 125720	175	n.a.
*Dup 125732	61	n.a.
*Dup 125744	2890	n.a.



XRAL Laboratories
A Division of SGS Canada Inc.

1885 Leslie Street
Don Mills, Ontario
Canada M3B 3J4
Tel: (416) 445-5755
Fax: (416) 445-4152

CERTIFICATE OF ANALYSIS

Work Order: 017193

To: **Mishibishu Gold Corp**
Attn: **Jim Millard**
Box 87
Wawa
Ontario
POS 1K0

Date : 25/09/97

Copy 1 to :

Copy 2 to :

P.O. No. :
Project No. : **Mishibishu M1**
No. of Samples : **77 Rock**
Date Submitted : **11/09/97**
Report Comprises : **Cover Sheet plus**
Pages 1 to 2

Distribution of unused material:

Pulps: Pulps - no instructions
Rejects: Rejects - no instructions

Certified By :

Dr. Hugh de Souza, General Manager
XRAL Laboratories

Report Footer: L.N.R. = Listed not received I.S. = Insufficient Sample
n.a. = Not applicable -- = No result
I.N.F. = Composition of this sample makes detection impossible by this method
M after a result denotes ppb to ppm conversion, % denotes ppm to % conversion



XRAL Laboratories
A Division of SGS Canada Inc.

Work Order: 017193

Date: 25/09/97

FINAL

Page 1 of 2

Element. Method. Det.Lim. Units.	Au FA30/1 1 ppb	Au FAG3 0.03 g/mt
125749	56	n.a.
125750	1220	1.44
125751	1650	1.71
125752	274	n.a.
125753	1480	1.41
125754	282	n.a.
125755	269	n.a.
125756	228	n.a.
125757	413	n.a.
125758	272	n.a.
125759	2840	2.95
125760	2220	2.57
125761	3910	3.74
125762	188	n.a.
125763	292	n.a.
125764	3210	3.29
125765	154	n.a.
125766	247	n.a.
125767	411	n.a.
125768	486	n.a.
125769	1950	2.02
125770	1350	1.20
125771	750	n.a.
125772	744	n.a.
125773	1270	1.17
125774	168	n.a.
125775	227	n.a.
125776	2080	2.06
125777	1270	1.47
125778	603	n.a.
125779	1650	1.71
125780	2400	2.16
125781	4840	4.94
125782	2390	2.50
125783	2220	2.13
125784	>10000	12.0
125785	909	n.a.
125786	1650	1.54
125787	9080	9.15
125788	346	n.a.
125789	384	n.a.
125790	173	n.a.
125791	656	n.a.
125792	3220	3.63
125793	2760	2.67

XRAL**XRAL Laboratories**
A Division of SGS Canada Inc.

Work Order: 017193

Date: 25/09/97

FINAL

Page 2 of 2

Element.	Au	Au
Method.	FA30/1	FAG30
Det.Lim.	1	0.03
Units.	ppb	g/mt
125794	1940	2.02
125795	1680	1.44
125796	3950	3.81
125797	3830	4.01
125798	388	n.a.
125799	486	n.a.
125800	302	n.a.
125801	4810	5.28
125802	6190	6.58
125803	2350	2.06
125804	1500	1.44
125805	436	n.a.
125806	192	n.a.
125807	241	n.a.
125808	3510	3.77
125809	6880	6.79
125810	1450	1.65
125811	984	n.a.
125812	294	n.a.
125813	325	n.a.
125814	109	n.a.
125815	48	n.a.
125816	42	n.a.
125817	470	n.a.
123533	1300	1.34
123534	381	n.a.
123535	250	n.a.
123536	1010	1.06
123537	217	n.a.
123538	303	n.a.
123539	379	n.a.
123540	1820	1.71
*Dup 125749	58	n.a.
*Dup 125761	3840	n.a.
*Dup 125773	1090	n.a.
*Dup 125785	926	n.a.
*Dup 125797	3870	n.a.
*Dup 125809	6500	n.a.
*Dup 123536	1100	n.a.



XRAL Laboratories
A Division of SGS Canada Inc.

1885 Leslie Street
Don Mills, Ontario
Canada M3B 3J4
Tel: (416) 445-5755
Fax: (416) 445-4152

CERTIFICATE OF ANALYSIS

Work Order: 017204

To: Mishibishu Gold Corp
Attn: Jim Millard
Box 87
Wawa
Ontario
P0S 1K0

Date : 30/09/97

Copy 1 to :

Copy 2 to :

P.O. No. :
Project No. : Mishibishu M1
No. of Samples : 222 Rock
Date Submitted : 10/09/97
Report Comprises : Cover Sheet plus
Pages 1 to 6

Distribution of unused material:
Pulps: Pulps - no instructions
Rejects: Rejects - no instructions

Certified By :

Dr. Hugh de Souza, General Manager
XRAL Laboratories

Report Footer: L.N.R. = Listed not received I.S. = Insufficient Sample
n.a. = Not applicable -- = No result
I.N.F. = Composition of this sample makes detection impossible by this method
M after a result denotes ppb to ppm conversion, % denotes ppm to % conversion



XRAL Laboratories
A Division of SGS Canada Inc.

Work Order: 017204

Date: 30/09/97

FINAL

Page 1 of 6

Element.	A	su
Method.	FA30/1	F. 30
Det.Lim.	1	0.03
Units.	ppb	g/mt
125888	10	n.a.
125889	2670	2.47
125890	23	n.a.
125891	27	n.a.
125892	14	n.a.
125893	24	n.a.
125894	117	n.a.
125895	7	n.a.
125896	41	n.a.
125897	2270	2.54
125898	29	n.a.
125899	12	n.a.
125900	56	n.a.
125901	27	n.a.
125902	9	n.a.
125903	40	n.a.
125904	181	n.a.
125905	21	n.a.
125906	35	n.a.
125907	275	n.a.
125908	2900	2.71
125909	371	n.a.
125910	103	n.a.
125911	319	n.a.
125912	855	n.a.
125913	92	n.a.
125914	123	n.a.
125915	66	n.a.
125916	9	n.a.
125917	23	n.a.
125918	9	n.a.
125919	49	n.a.
125920	5	n.a.
125921	14	n.a.
125922	51	n.a.
125923	27	n.a.
125924	106	n.a.
125925	45	n.a.
125926	8	n.a.
125927	11	n.a.
125928	73	n.a.
125929	2	n.a.
125930	60	n.a.
125931	22	n.a.
125932	27	n.a.



XRAL Laboratories
A Division of SGS Canada Inc.

Work Order: 017204

Date: 30/09/97

FINAL

Page 2 of 6

Element. Method. Det.Lim. Units.	Au FA30/1 1 ppb	Au FAG30 0.03 g/mt
125933	19	n.a.
125934	21	n.a.
125935	33	n.a.
125936	5	n.a.
125937	4	n.a.
125938	230	n.a.
125939	43	n.a.
125940	162	n.a.
125941	146	n.a.
125942	28	n.a.
125943	16	n.a.
125944	10	n.a.
125945	51	n.a.
125946	87	n.a.
125947	105	n.a.
125948	58	n.a.
125949	26	n.a.
125950	53	n.a.
125951	514	n.a.
125952	266	n.a.
125953	225	n.a.
125954	13	n.a.
125955	92	n.a.
125956	6	n.a.
125957	4	n.a.
125958	3	n.a.
125959	1	n.a.
125960	47	n.a.
125961	12	n.a.
125962	23	n.a.
125963	10	n.a.
125964	<1	n.a.
125965	1	n.a.
125966	1020	1.27
125967	1140	1.10
125968	926	n.a.
125969	617	n.a.
125970	87	n.a.
125971	44	n.a.
125972	6	n.a.
125973	57	n.a.
125974	930	n.a.
125975	53	n.a.
125976	8	n.a.
125977	8	n.a.



XRAL Laboratories
A Division of SGS Canada Inc.

Work Order: 017204

Date: 30/09/97

FINAL

Page 3 of 6

Element.	Au	Au
Method.	FA30/1	FAG30
Det.Lim.	1	0.03
Units.	ppb	g/mt
125978	>10000	25.3
125979	>10000	51.0
125980	>10000	64.8
125981	6180	6.27
125982	>10000	17.2
125983	191	n.a.
125984	>10000	139
125985	>10000	27.5
125986	1610	1.47
125987	135	n.a.
125988	138	n.a.
125989	101	n.a.
125990	30	n.a.
125991	190	n.a.
125992	3540	3.84
125993	164	n.a.
125994	31	n.a.
125995	5	n.a.
125996	409	n.a.
125997	38	n.a.
125998	72	n.a.
125999	4400	4.46
126000	565	n.a.
123501	187	n.a.
123502	42	n.a.
123503	302	n.a.
123504	9310	9.46
123505	354	n.a.
123506	37	n.a.
123507	32	n.a.
123508	184	n.a.
123509	3540	3.43
123510	>10000	116
123511	40	n.a.
123512	42	n.a.
123513	23	n.a.
123514	111	n.a.
123515	5860	6.17
123516	>10000	27.0
123517	2900	3.29
123518	3910	3.91
123519	922	n.a.
123520	480	n.a.
123521	5180	5.04
123522	4550	4.80



XRAL Laboratories
A Division of SGS Canada Inc.

Work Order: 017204

Date: 30/09/97

FINAL

Page 4 of 6

Element. Method. Det.Lim. Units.	Au FA30/1 1 ppb	Au FAG30 0.03 g/mt
123523	617	n.a.
123524	320	n.a.
123525	86	n.a.
123526	20	n.a.
123527	24	n.a.
123528	9	n.a.
123529	10	n.a.
123530	8	n.a.
123531	7	n.a.
123532	16	n.a.
123541	5	n.a.
123542	214	n.a.
123543	29	n.a.
123544	214	n.a.
123545	33	n.a.
123546	1210	1.30
123547	234	n.a.
125818	3380	3.36
125819	823	n.a.
125820	108	n.a.
125821	76	n.a.
125822	95	n.a.
125823	176	n.a.
125824	1670	1.75
125825	6660	6.72
125826	651	n.a.
125827	346	n.a.
125828	3050	3.09
125829	668	n.a.
125830	43	n.a.
125831	238	n.a.
125832	1010	1.03
125833	377	n.a.
125834	439	n.a.
125835	219	n.a.
125836	2050	2.33
125837	473	n.a.
125838	3930	3.77
125839	1440	1.61
125840	7510	7.82
125841	3450	3.77
125842	81	n.a.
125843	307	n.a.
125844	150	n.a.
125845	105	n.a.



XRAL Laboratories
A Division of SGS Canada Inc.

Work Order: 017204

Date: 30/09/97

FINAL

Page 5 of 6

Element. Method. Det.Lim. Units.	Au FA30/1 1 ppb	Au FAG30 0.03 g/mt
125846	484	n.a.
125847	588	n.a.
125848	560	n.a.
125849	633	n.a.
125850	460	n.a.
125851	154	n.a.
125852	40	n.a.
125853	30	n.a.
125854	339	n.a.
125855	497	n.a.
125856	583	n.a.
125857	187	n.a.
125858	288	n.a.
125859	1400	1.44
125860	279	n.a.
125861	96	n.a.
125862	1150	1.37
125863	619	n.a.
125864	254	n.a.
125865	34	n.a.
125866	191	n.a.
125867	39	n.a.
125868	26	n.a.
125869	12	n.a.
125870	171	n.a.
125871	16	n.a.
125872	955	n.a.
125873	39	n.a.
125874	1410	1.54
125875	283	n.a.
125876	49	n.a.
125877	41	n.a.
125878	16	n.a.
125879	20	n.a.
125880	8	n.a.
125881	2	n.a.
125882	28	n.a.
125883	54	n.a.
125884	33	n.a.
125885	30	n.a.
125886	12	n.a.
125887	7	n.a.
*Dup 125888	9	n.a.
*Dup 125900	68	n.a.
*Dup 125912	823	n.a.



XRAL Laboratories
A Division of SGS Canada Inc.

Work Order: 017204

Date: 30/09/97

FINAL

Page 6 of 6

Element.	Au	Au
Method.	FA30/1	FAG30
Det.Lim.	1	0.03
Units.	ppb	g/mt
*Dup 125924	84	n.a.
*Dup 125936	6	n.a.
*Dup 125948	69	n.a.
*Dup 125960	54	n.a.
*Dup 125972	9	n.a.
*Dup 125984	> 10000	n.a.
*Dup 125996	406	n.a.
*Dup 123508	183	n.a.
*Dup 123520	483	n.a.
*Dup 123532	18	n.a.
*Dup 125822	93	n.a.
*Dup 125834	450	n.a.
*Dup 125846	482	n.a.
*Dup 125858	273	n.a.
*Dup 125870	203	n.a.
*Dup 125882	24	n.a.



Declaration of Assessment Work Performed on Mining Land

Mining Act, Subsection 85(2) and 88(3), R.S.O. 1990

Transaction Number (office use)
129750.00890
Assessment Files Research Imaging

OW - 11

Personal information collected on this form is obtained under the authority of subsections 85(2) and 88(3) of the Mining Act. Under section 8 of the Mining Act, the information is a public document. Questions about this collection should be directed to the Information Access Officer, Ministry of Northern Development and Mines, 6th Floor, 933 Ramsey Lake Road, Sudbury, Ontario N3H 5K9.



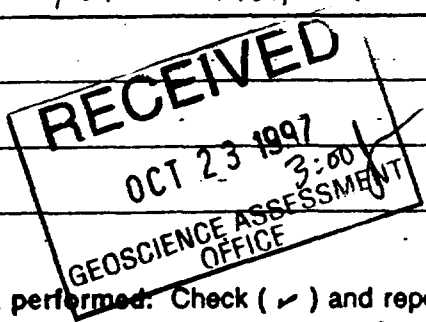
42C03SW0086 2.17768 MISHIBISHU LAKE

900 m 0240.

Instructions: - For work
- Please type or print in ink.

1. Recorded holder(s) (Attach a list if necessary)

Name MACMILLAN GOLD CORP	Client Number 162922
Address 365 BAY ST., 11th Floor TORONTO, ON M5H 2V1	Telephone Number 416-363-1124
	Fax Number 416-360-0728
Name	Client Number
Address	Telephone Number
	Fax Number



2. Type of work performed: Check (✓) and report on only ONE of the following groups for this declaration.

- Geotechnical: prospecting, surveys, assays and work under section 18 (regs) Physical: drilling, stripping, trenching and associated assays Rehabilitation

Work Type CHANNEL SAMPLING	Office Use
	Commodity
	Total \$ Value of Work Claimed 44,801
Dates Work Performed From 05/08/97 To 03/10/97	NTS Reference
Global Positioning System Data (if available)	Mining Division SSM
Township/Area MISHIBISHU LAKE AREA	Resident Geologist District SSM
M or G-Plan Number G-3772	

- Please remember to: - obtain a work permit from the Ministry of Natural Resources as required;
- provide proper notice to surface rights holders before starting work;
- complete and attach a Statement of Costs, form 0212;
- provide a map showing contiguous mining lands that are linked for assigning work;
- include two copies of your technical report.

2.17768

3. Person or companies who prepared the technical report (Attach a list if necessary)

Name BRUCE C. WILSON	Telephone Number 613-544-2171
Address 347 ALBERT ST., KINGSTON, ON K7L 3W1	Fax Number AS ABOVE
Name	Telephone Number
Address	Fax Number
Name	Telephone Number
Address	Fax Number

4. Certification by Recorded Holder or Agent

I, JAMES E. MILLARD (Print Name), do hereby certify that I have personal knowledge of the facts set forth in this Declaration of Assessment Work having caused the work to be performed or witnessed the same during or after its completion and, to the best of my knowledge, the annexed report is true.

Signature of Recorded Holder or Agent <i>JEMillard</i>	Date OCT. 22/97
Agent's Address 16 BROADWAY AVE, WAWA ON K0A 1K0	Telephone Number 705-856-8195
	Fax Number 705-856-8196

James E. Millard - 21/98

Work to be recorded and distributed. Work can only be assigned to claims that are contiguous (adjoining) to the mining land where work was performed, at the time work was performed. A map showing the contiguous link must accompany this form.

W 9750.00894

Mining Claim Number. Or if work was done on other eligible mining land, show in this column the location number indicated on the claim map.	Number of Claim Units. For other mining land, list hectares.	Value of work performed on this claim or other mining land.	Value of work applied to this claim.	Value of work assigned to other mining claims.	Bank Value of work to be distributed at a future date.
eg TB 7827	16 ha	\$26,825	N/A	\$24,000	\$2,825
eg 1234567	12	0	\$24,000	0	0
eg 1234568	2	\$8,892	\$4,000	0	\$4,892
1 CLM - 377	5000147	0			
2 CLM - 378	5000148	22,401 ✓	N/A	14800	7601
3 CLM - 379	5000149	22,400 ✓	N/A	14800	7600
4 601750	1		800 ✓		
5 601751	1		800 ✓		
6 601752	1		800 ✓		
7 601753	1		800 ✓		
8 601754	1		800 ✓	2017788	
9 601755	1		800 ✓		
10 601756	1		800 ✓		
11 601757	1		800 ✓		
12 601758	1		800 ✓		
13 601759	1		800 ✓		
14 601762	1		800 ✓		
15 601771	1		800 ✓		
Column Totals					

RECEIVED
 OCT 23 1997
 GEOSCIENCE ASSESSMENT OFFICE

I, JAMES E. MILLARD (Print Full Name), do hereby certify that the above work credits are eligible under subsection 7 (1) of the Assessment Work Regulation 6/96 for assignment to contiguous claims or for application to the claim where the work was done.

Signature of Recorded Holder or Agent Authorized in Writing JEMillard Date OCT 22/97

6. Instructions for cutting back credits that are not approved.

Some of the credits claimed in this declaration may be cut back. Please check (✓) in the boxes below to show how you wish to prioritize the deletion of credits:

- 1. Credits are to be cut back from the Bank first, followed by option 2 or 3 or 4 as indicated.
- 2. Credits are to be cut back starting with the claims listed last, working backwards; or
- 3. Credits are to be cut back equally over all claims listed in this declaration; or
- 4. Credits are to be cut back as prioritized on the attached appendix or as follows (describe):

CLM 378
CLM 379

Note: If you have not indicated how your credits are to be deleted, credits will be cut back from the Bank first, followed by option number 2 if necessary.

For Office Use Only	
Received Stamp	Deemed Approved Date
	Date Notification Sent
Date Approved	Total Value of Credit Approved
Approved for Recording by Mining Recorder (Signature)	

Work to be recorded and distributed. Work can only be assigned to claims that are contiguous (adjoining) to mining land where work was performed, at the time work was performed. A map showing the contiguous link, must accompany this form.

W9750.00894

Claim Number. Or if work was done on other eligible mining land, show in this column the location number indicated on the claim map.	Number of Claim Units. For other mining land, list hectares.	Value of work performed on this claim or other mining land.	Value of work applied to this claim.	Value of work assigned to other mining claims.	Bank. Value of work to be distributed at a future date.
TB 7827	16 ha	\$26,825	N/A	\$24,000	\$2,825
1234567	12	0	\$24,000	0	0
1234568	2	\$8,892	\$4,000	0	\$4,892
601772	1		800 ✓		
601773	1		800 ✓		
601774	1		800 ✓		
601775	1		800 ✓		
601776	1		800 ✓		
601777	1		800 ✓		
601778	1		800 ✓		
601779	1		800 ✓		
601780	1		800 ✓		
601737	1		800 ✓		
601736	1		800 ✓		
601735	1		800 ✓		
601734	1		800 ✓		
601733	1		800 ✓		
601732	1		800 ✓		
Column Totals					

2.17768

RECEIVED
 OCT 23 1997
 8:00
 GEOSCIENCE ASSESSMENT
 OFFICE

_____, do hereby certify that the above work credits are eligible under subsection 7 (1) of the Assessment Work Regulation 6/96 for assignment to contiguous claims or for application to the claim where the work was done.

Signature of Recorded Holder or Agent Authorized in Writing _____ Date _____

Instructions for cutting back credits that are not approved.

Some of the credits claimed in this declaration may be cut back. Please check (✓) in the boxes below to show how you wish to prioritize the deletion of credits:

- 1. Credits are to be cut back from the Bank first, followed by option 2 or 3 or 4 as indicated.
- 2. Credits are to be cut back starting with the claims listed last, working backwards; or
- 3. Credits are to be cut back equally over all claims listed in this declaration; or
- 4. Credits are to be cut back as prioritized on the attached appendix or as follows (describe):

Note: If you have not indicated how your credits are to be deleted, credits will be cut back from the Bank first, followed by option number 2 if necessary.

Recorder Office Use Only

Received Stamp	Deemed Approved Date	Date Notification Sent
	Date Approved	Total Value of Credit Approved
Approved for Recording by Mining Recorder (Signature)		

Personal information collected on this form is obtained under the authority of subsection 6(1) of the Assessment Work Regulation 6/96. Under section 8 of the Mining Act, the information is a public record. This information will be used to review the assessment work and correspond with the mining land holder. Questions about this collection should be directed to the Chief Mining Recorder, Ministry of Northern Development and Mines, 6th Floor, 933 Ramsey Lake Road, Sudbury, Ontario, P3E 6B5.

Work Type	Units of Work <small>Depending on the type of work, list the number of hours/days worked, metres of drilling, kilometres of grid line, number of samples, etc.</small>	Cost Per Unit of work	Total Cost
GEO TECHNICAL SURVEY	CONSULTANTS / CONTRACTORS		
CONSULTANT	FEE'S / LABOURS / REPORTING		\$27,009.
	APPROXIMATELY 100 PERSON DAYS		
	547 CHANNEL SAMPLES TAKEN		
Associated Costs (e.g. supplies, mobilization and demobilization).			
	equipment rentals and supplies		1,138 6,089.
	ASSAYING		8,126.
	Transportation Costs		1,138.
	Food and Lodging Costs		2,439.
Total Value of Assessment Work			\$44,801.

RECEIVED
 OCT 23 1997
 GEOSCIENCE ASSESSMENT OFFICE

2017768

Calculations of Filing Discounts:

1. Work filed within two years of performance is claimed at 100% of the above Total Value of Assessment Work.
2. If work is filed after two years and up to five years after performance, it can only be claimed at 50% of the Total Value of Assessment Work. If this situation applies to your claims, use the calculation below:

TOTAL VALUE OF ASSESSMENT WORK $\times 0.50 =$ Total \$ value of worked claimed.

Note:
 - Work older than 5 years is not eligible for credit.
 - A recorded holder may be required to verify expenditures claimed in this statement of costs within 45 days of a request for verification and/or correction/clarification. If verification and/or correction/clarification is not made, the Minister may reject all or part of the assessment work submitted.

Certification verifying costs:

I, JAMES E. MILLARD (please print full name), do hereby certify, that the amounts shown are as accurate as may reasonably be determined and the costs were incurred while conducting assessment work on the lands indicated on the accompanying Declaration of Work form as AGENT I am authorized (recorded holder, agent, or state company position with signing authority) to make this certification.

Signature <i>J E Millard</i>	Date Oct. 22, 1997
---------------------------------	-----------------------

March 3, 1998

MACMILLAN GOLD CORP.
365 BAY STREET
11TH FLOOR
TORONTO, ONTARIO
M5H-2V1

Geoscience Assessment Office
933 Ramsey Lake Road
6th Floor
Sudbury, Ontario
P3E 6B5

Telephone: (888) 415-9846
Fax: (705) 670-5881

Dear Sir or Madam:

Submission Number: 2.17768

Status

Subject: Transaction Number(s): W9750.00894 Approval After Notice

We have reviewed your Assessment Work submission with the above noted Transaction Number(s). The attached summary page(s) indicate the results of the review. **WE RECOMMEND YOU READ THIS SUMMARY FOR THE DETAILS PERTAINING TO YOUR ASSESSMENT WORK.**

If the status for a transaction is a 45 Day Notice, the summary will outline the reasons for the notice, and any steps you can take to remedy deficiencies. The 90-day deemed approval provision, subsection 6(7) of the Assessment Work Regulation, will no longer be in effect for assessment work which has received a 45 Day Notice.

Please note any revisions must be submitted in **DUPLICATE** to the Geoscience Assessment Office, by the response date on the summary.

If you have any questions regarding this correspondence, please contact Lucille Jerome by e-mail at jeromel2@epo.gov.on.ca or by telephone at (705) 670-5858.

Yours sincerely,



ORIGINAL SIGNED BY
Blair Kite
Supervisor, Geoscience Assessment Office
Mining Lands Section

Work Report Assessment Results

Submission Number: 2.17768

Date Correspondence Sent: March 03, 1998

Assessor: Lucille Jerome

Transaction Number	First Claim Number	Township(s) / Area(s)	Status	Approval Date
W9750.00894	CLM 378	MISHIBISHU LAKE	Approval After Notice	March 02, 1998

Section:

17 Assays ASSAY

The revisions outlined in the Notice dated January 21, 1998, have been corrected. Accordingly, assessment work credit has been approved as outlined on the Declaration of Assessment Work Form accompanying this submission.

Correspondence to:

Resident Geologist
Sault Ste. Marie, ON

Recorded Holder(s) and/or Agent(s):

James Millard
WAWA, ON, CAN

Assessment Files Library
Sudbury, ON

MACMILLAN GOLD CORP.
TORONTO, ONTARIO

C-315

WISHIBISHU LAKE

C-315

WISHIBISHU LAKE

REFERENCE

AREAS WITHDRAWN FROM DISPOSITION

R.O. - MINING RIGHTS ONLY

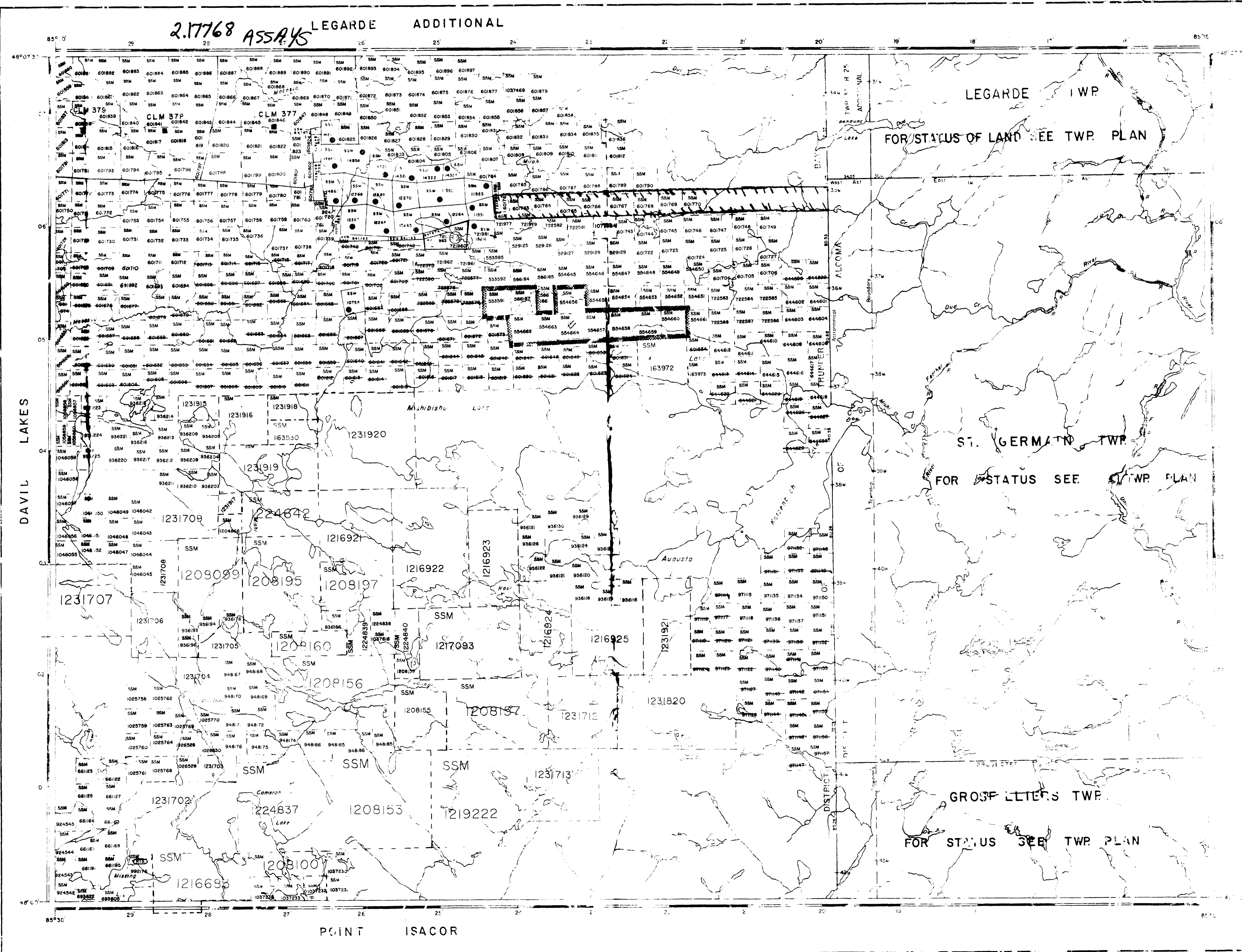
R.O. - SURFACE RIGHTS ONLY

R.O. - MINING AND SURFACE RIGHTS

System	Order No.	Date	Disposition	File
	002/88	24/10/88	MBS	

SURFACE RIGHTS APPLICATION UNDER P.L.A. FOR AREA SHOWN THUS

W-50M-8/87 JAN/2/87 SPO 195/50



REFERENCES

LEGEND

- FIG. WAYS AND ROUTE No.
- OTHER ROADS
- RAILS
- SURVEY LINES
- TOWNSHIPS, BASE LINES, ETC.
- LOTS, MINING CLAIMS, PARCELS, ETC.
- UNSURVEYED LINES
- LOT LINES
- PARCEL BOUNDARY
- MINING CLAIMS ETC.
- RAILWAY AND RIGHT OF WAY
- UTILITY LINES
- NON-PRESENTIAL REACH
- FLOODING OF FLOODING RIGHTS
- SUBDIVISION OR COMPOSITE PLAN
- RESERVATIONS
- ORIGINAL SHOT LINE
- MARSH OR MISKEG
- MINES
- TRAVERSE MONUMENT
- (CITY) LAND USE PERMIT

DISPOSITION OF CROWN LANDS

TYPE OF DOCUMENT	SYMBOL
PATENT, SURFACE & MINING RIGHTS	○
SURFACE RIGHTS ONLY	○
MINING RIGHTS ONLY	○
LEASE, SURFACE & MINING RIGHTS	○
SURFACE RIGHTS ONLY	○
MINING RIGHTS ONLY	○
LICENCE OF OCCUPATION	○
ORDER-IN-COUNCIL	○
RESERVATION	○
CANCELLED	○
SANITIZING LEVEL	○

NOTE: MINING RIGHTS IN PARCELS PATENTED PRIOR TO MAY 6, 1913, VESTED IN ORIGINAL PATENTEE BY THE PUBLIC LANDS ACT, R.S.O. 1970, CHAP. 290, SEC. 63, SUBSEC. 1.

SCALE: 1 INCH = 40 CHAINS

FEET: 0 1000 2000 4000 6000 8000

METRES: 0 100 200 400 600 800

DATE OF ISSUE

JAN 29 1998

PROVINCIAL RECORDING OFFICE - SUDBURY

THE 1925 MAGNETIC BEARING APPROX. $6^{\circ} 30'$

ANNUAL CHANGE IN INCREASING $10' 30''$

THE INFORMATION THAT APPEARS ON THIS MAP HAS BEEN COMPILED FROM VARIOUS SOURCES AND ACCURACY IS NOT GUARANTEED. THOSE WISHING TO STAKE MINING CLAIMS SHOULD CONSULT WITH THE MINING RECORDER, MINISTRY OF NORTHERN DEVELOPMENT AND MINES FOR ADDITIONAL INFORMATION ON THE STATUS OF THE LANDS SHOWN HEREON.

AREA

MISHIBISHU LAKE

NORTHERN ADMINISTRATIVE DISTRICT

WAWA

MINING DIVISION

SAULT STE. MARIE

LAND TITLES / REGISTRY DIVISION

ALGOMA

Ministry of Natural Resources
Ontario

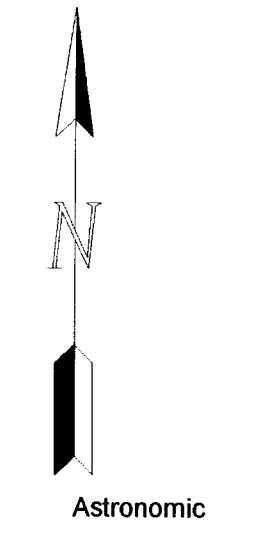
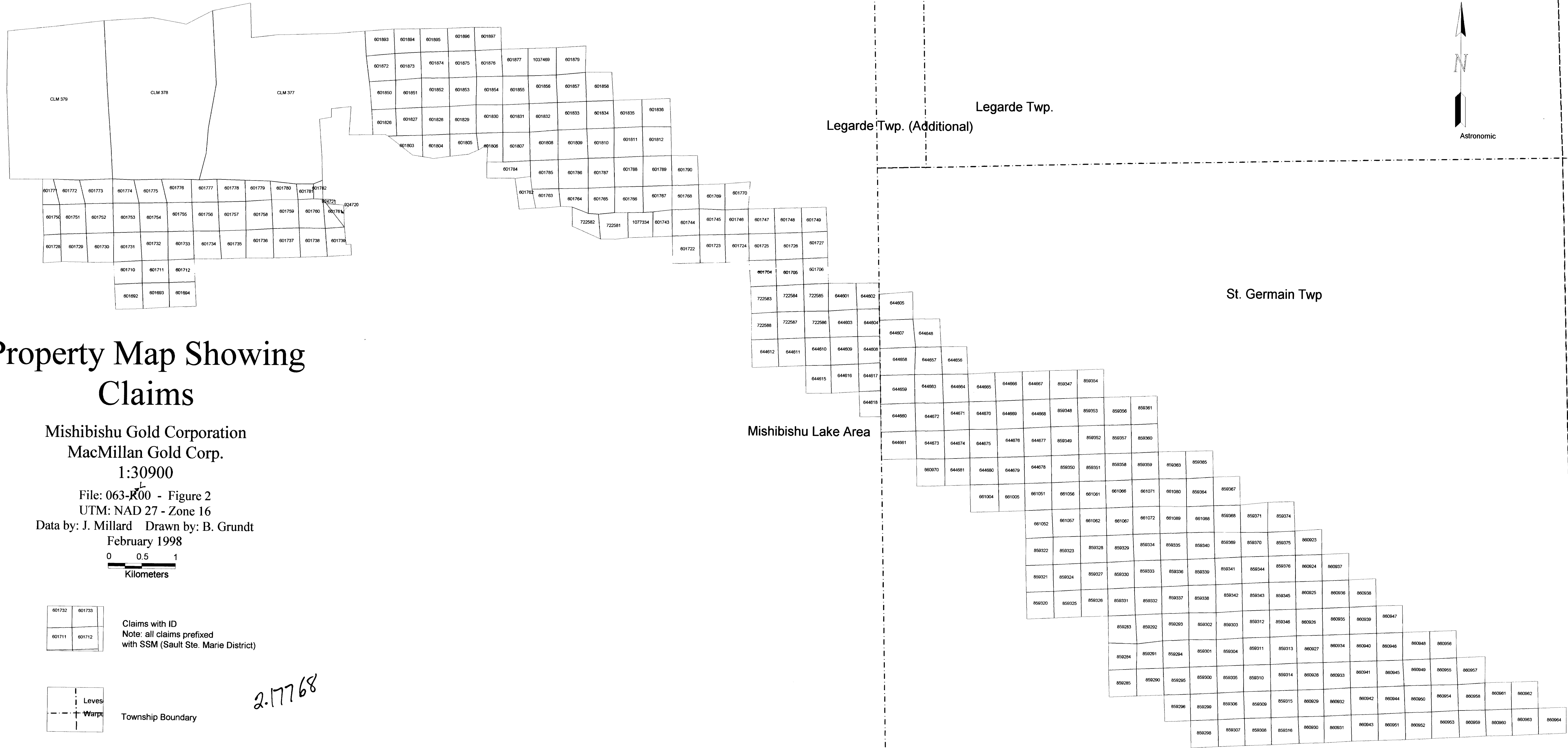
Ministry of Northern Development
and Mines

FEBRUARY 1997

C-3772

TRIM TO THIS LINE ALL AROUND

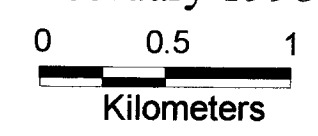




Property Map Showing Claims

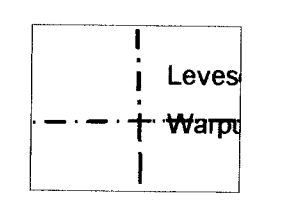
Mishibishu Gold Corporation
 MacMillan Gold Corp.
 1:30900

File: 063-R00 - Figure 2
 UTM: NAD 27 - Zone 16
 Data by: J. Millard Drawn by: B. Grundt
 February 1998



601732	601733
601711	601712

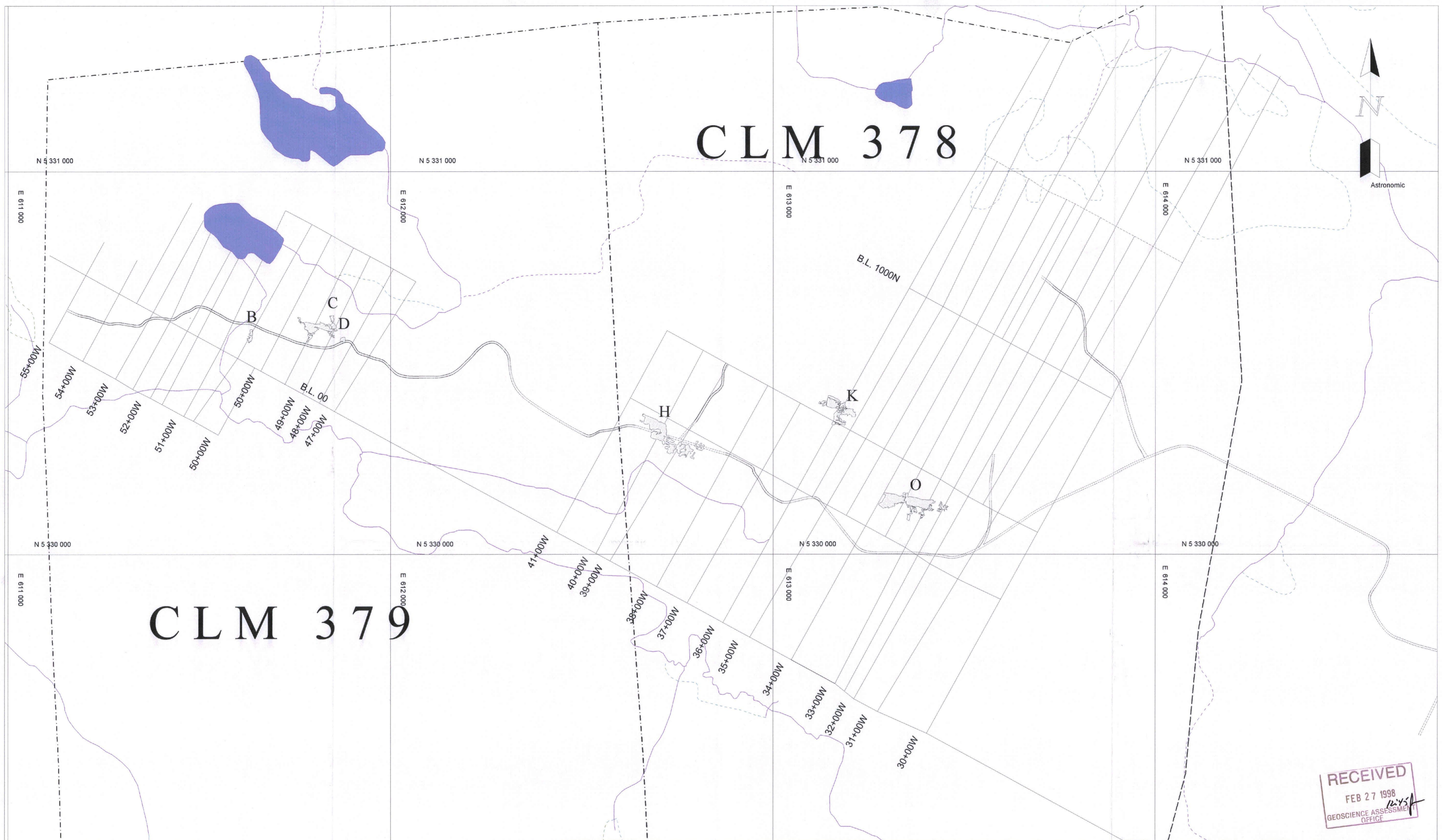
Claims with ID
 Note: all claims prefixed with SSM (Sault Ste. Marie District)



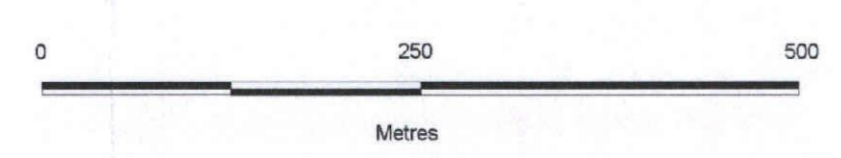
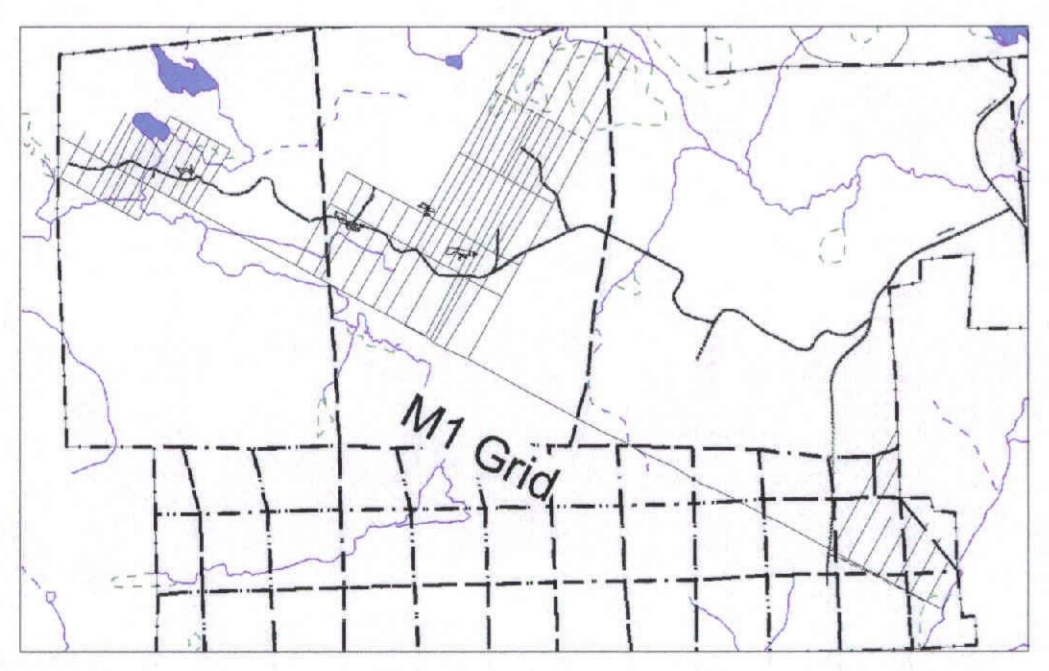
Township Boundary



2.17768





RECEIVED
 FEB 27 1998
 GEOSCIENCE ASSESSMENT OFFICE



 Channel Sample Area
 Access Trails

Location Plan Showing Channel Sample Areas

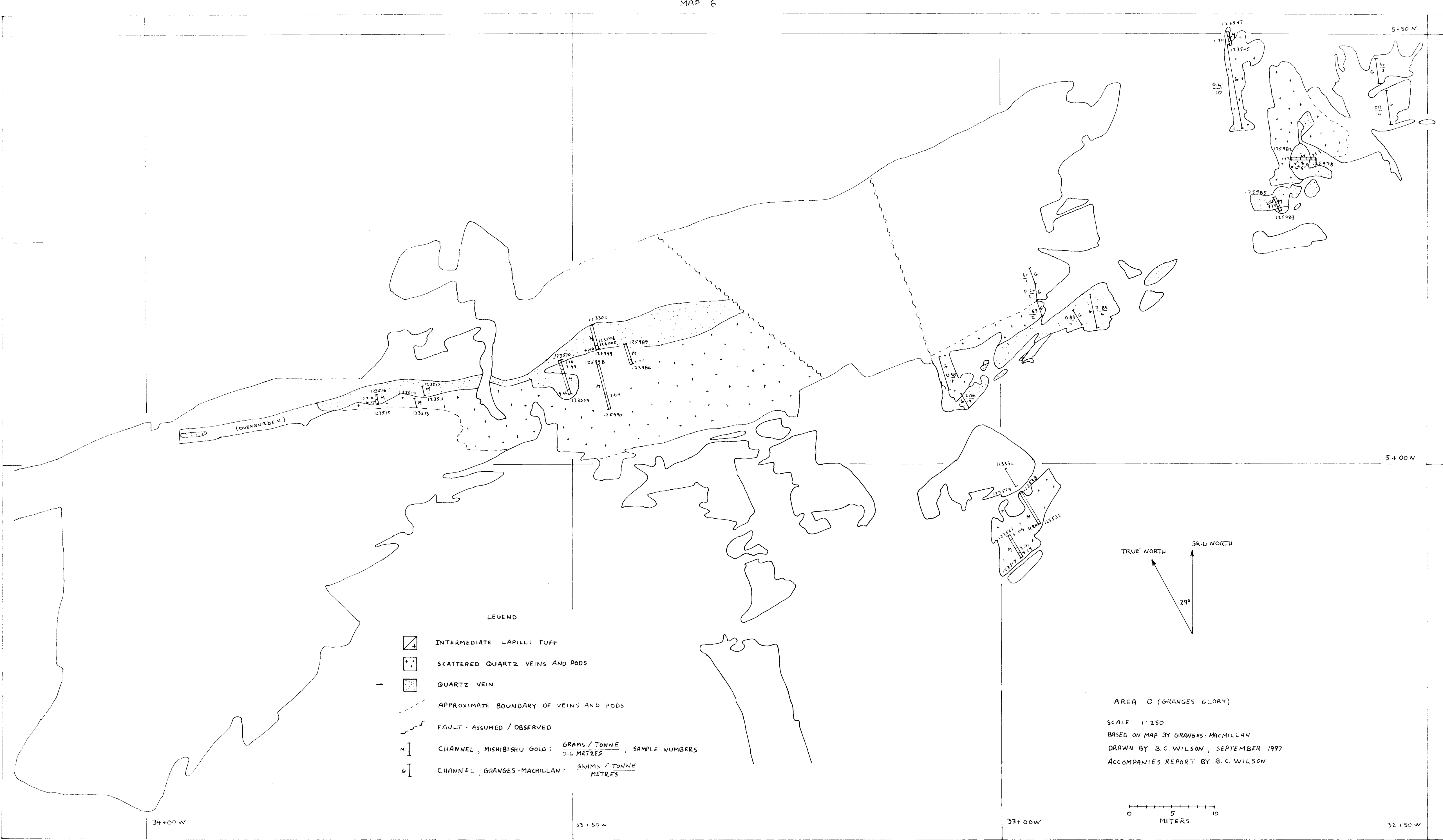
Mishibishu Gold Corporation
 MacMillan Gold Corp.
 1:5000

File: 063-R00 - Figure 1
 UTM: NAD 27 - Zone 16
 Data by: J. Millard Drawn by: B. Grundt
 February 1998

RECEIVED
 FEB 27 1998
 GEOSCIENCE ASSESSMENT OFFICE

2.17768

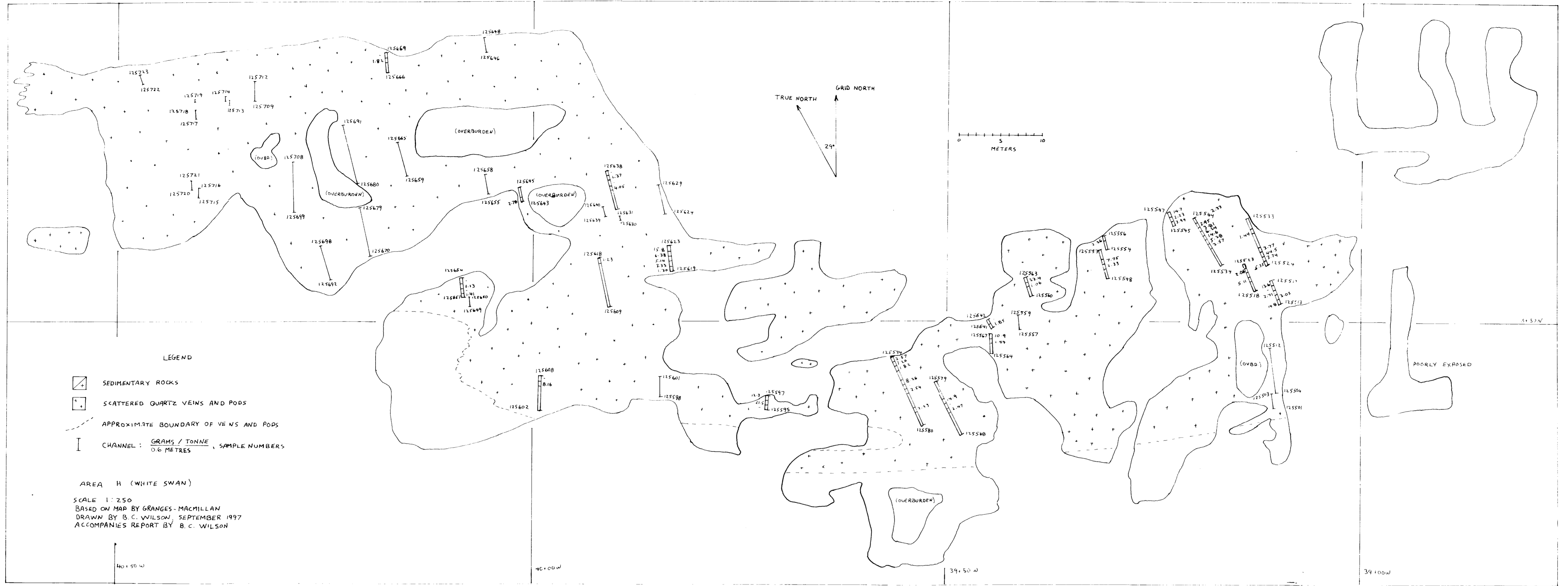




MAP 4
AREA 'O'
GRANGES GLORY

2.17768

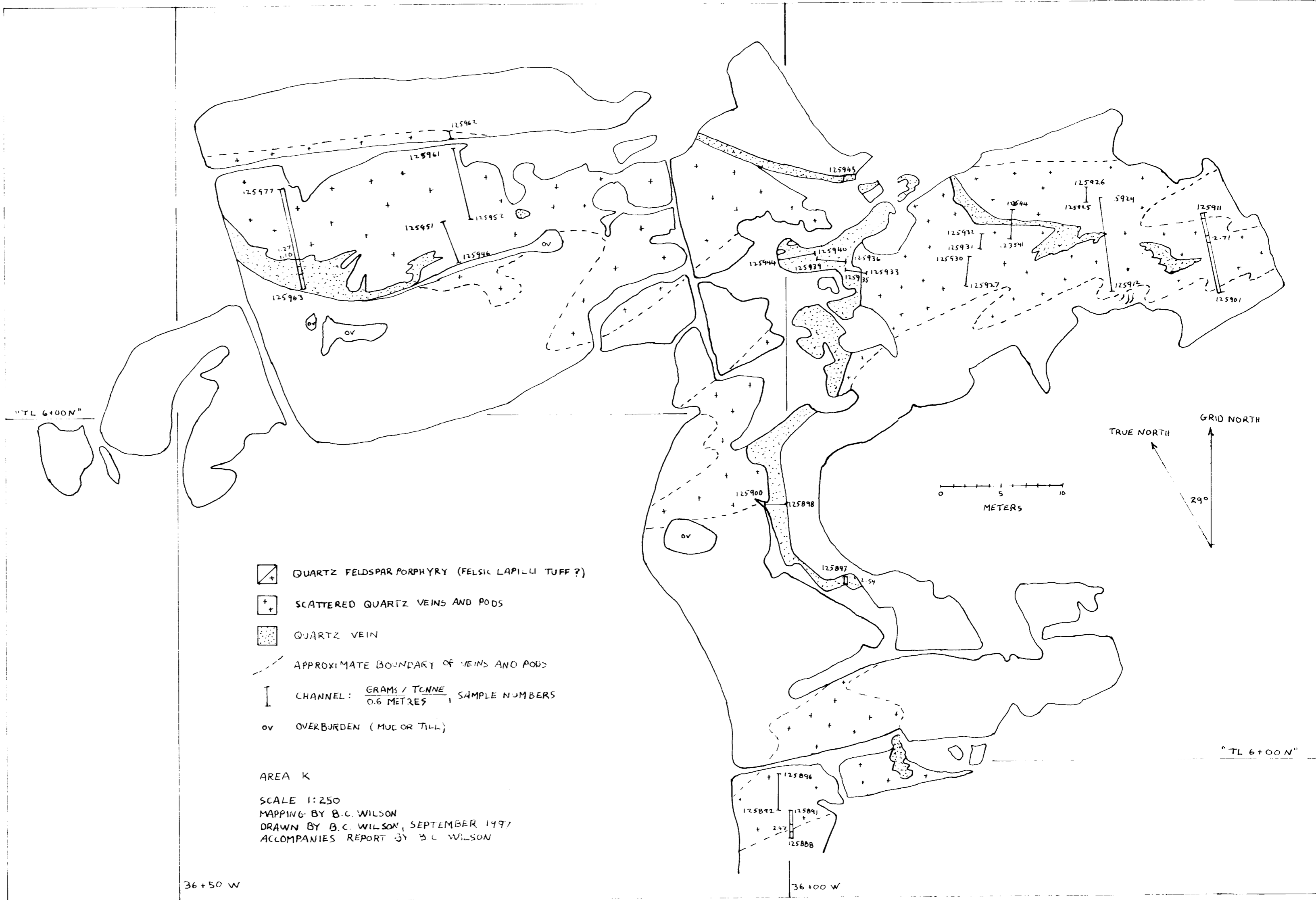




MAP 2
AREA "H"
WHITE SWAN

2.17708





MAP 3
AREA 'K'

2010

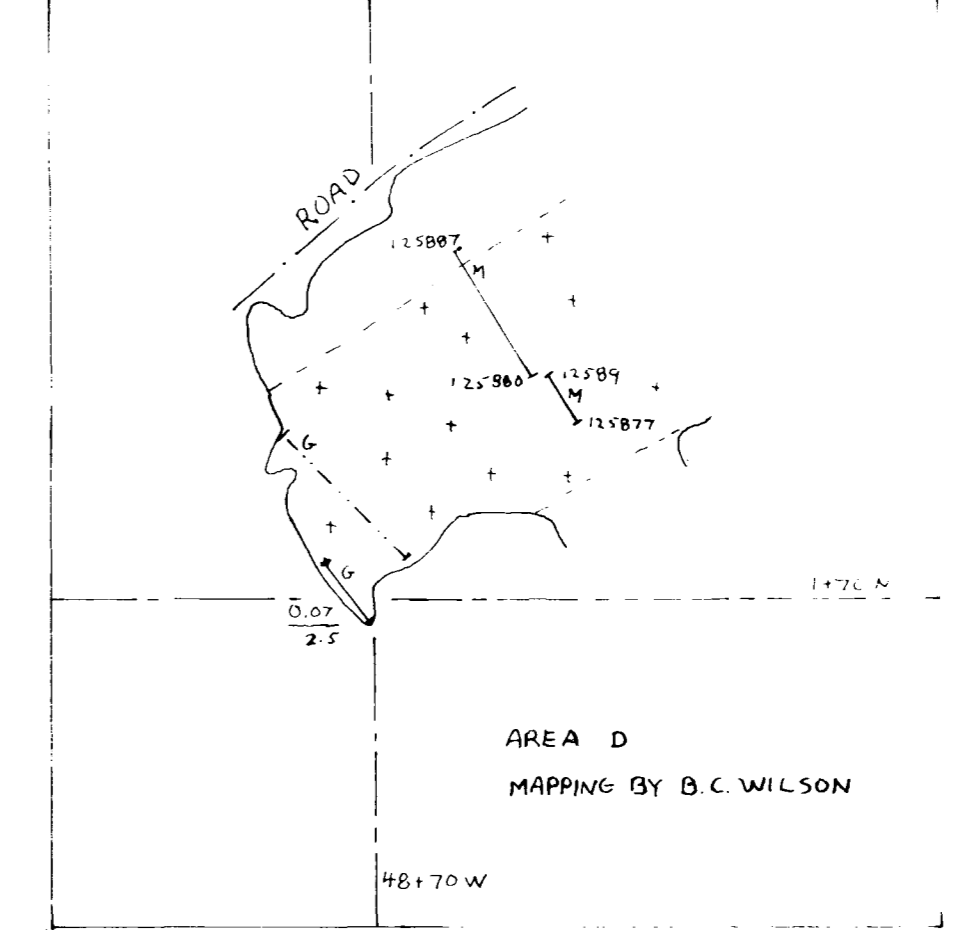
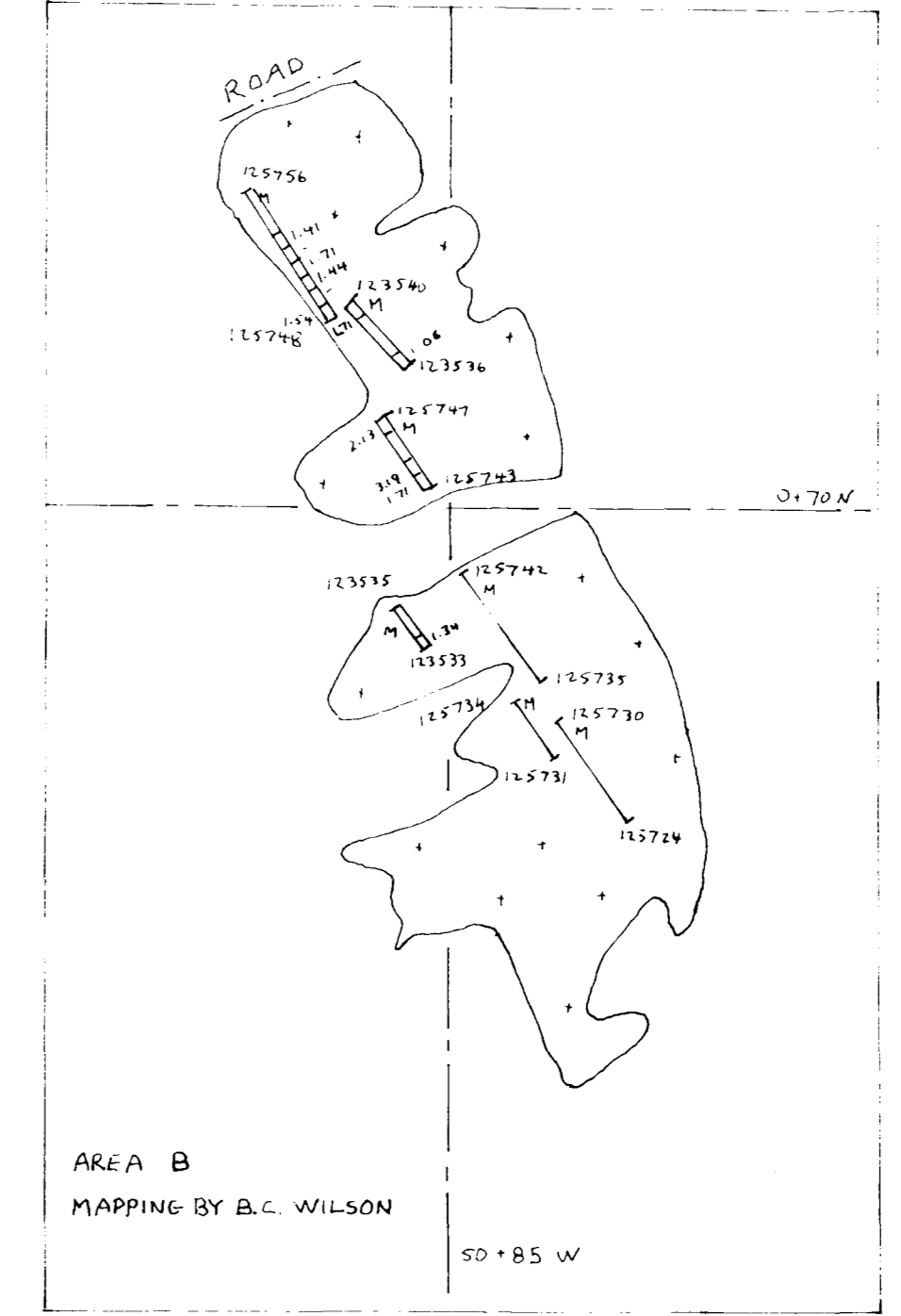
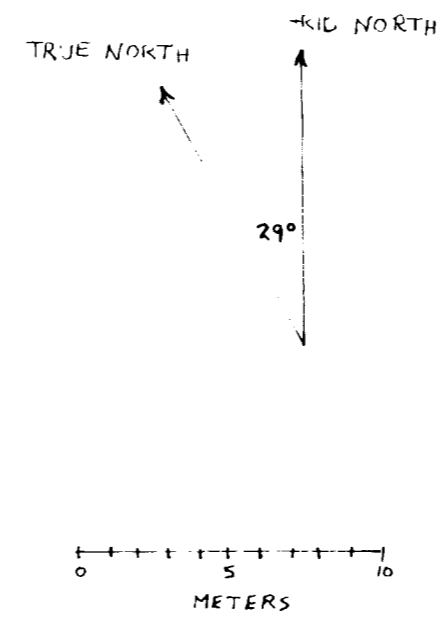




LEGEND

- SEDIMENTARY ROCKS
- SCATTERED QUARTZ VEINS AND PODS
- APPROXIMATE BOUNDARY OF VEINS AND PODS
- CHANNEL, MISHIBISHU GOLD: GRAMS / TONNE, SAMPLE NUMBER, 0.6 METRE
- CHANNEL, GRANGES-MACMILLAN: GRAMS / TONNE, METRES
- CHANNEL, GRANGES-MACMILLAN, ASSAY VALUE UNKNOWN

SCALE 1:250
 DRAWN BY B.C. WILSON, SEPTEMBER 1997
 ACCOMPANIES REPORT BY G. WILSON



MAP 1
 AREAS C, B, D

2-17763

