



42C03SW0113 41N13NE0012 DAVID LAKES

010

REPORT ON
COMBINED HELICOPTER-BORNE
MAGNETIC, ELECTROMAGNETIC,
AND VLF-EM SURVEY
OF THE
MAPLE LAKE CLAIMS
ONTARIO

RECEIVED

FEB 28 1983

MINING LANDS SECTION

for
BRASS RING RESOURCES LIMITED
by
AERODAT LIMITED
FEBRUARY 1983



42C03SW0113 41N13NE0012 DAVID LAKES

010C

TABLE OF CONTENTS

	<u>Page No.</u>
1. INTRODUCTION	1 - 1
2. SURVEY AREA/CLAIM NUMBERS AND LOCATIONS	2 - 1
3. AIRCRAFT EQUIPMENT	3 - 1
3.1 Aircraft	3 - 1
3.2 Equipment	3 - 1
3.2.1 Electromagnetic System	3 - 1
3.2.2 VLF-EM	3 - 1
3.2.3 Magnetometer	3 - 2
3.2.4 Magnetic Base Station	3 - 2
3.2.5 Radar Altimeter	3 - 2
3.2.6 Tracking Camera	3 - 3
3.2.7 Analog Recorder	3 - 3
3.2.8 Digital Recorder	3 - 4
4. DATA PRESENTATION	4 - 1
4.1 Base Map and Flight Path Recovery	4 - 1
4.2 Electromagnetic Profile Maps	4 - 2
4.3 Magnetic Contour Maps	4 - 4
4.4 VLF-EM Contour Maps	4 - 5
4.5 Electromagnetic Survey Conductor Symbolization	4 - 6
4.6 Interpretation Maps	4 - 8
APPENDIX I - General Interpretive Considerations	

LIST OF MAPS

(Scale: 1/15,840)

- | | |
|-------|--|
| Map 1 | Interpreted Conductive Units |
| Map 2 | Airborne Electromagnetic Survey Profile Map
(955 Hz. coaxial) |
| Map 3 | Total Field Magnetic Map |
| Map 4 | VLF-EM Total Field Contours |

Data provided but not included in report:

- 1 - master map (2 colour) of coaxial and coplanar profiles with flight path
- 2 - anomaly list providing estimates of depth and conductivity thickness
- 3 - analogue records of data obtained in flight

1. INTRODUCTION

This report describes an airborne geophysical survey carried out on behalf of Brass Ring Resources Limited by Aerodat Limited. Equipment operated included a 3 frequency electromagnetic system, a VLF-EM system, and a magnetometer.

The survey was flown in February 10 to February 22, 1983 from an operations base at Wawa Ontario. A total of 317 line miles were flown, at a nominal line spacing of 660 feet. Of the total flown, this report describes 63 line miles.

2. SURVEY AREA/CLAIM NUMBERS AND LOCATIONS

The mining claim numbers and locations covered by this survey are indicated on the map in the following pocket.

3. AIRCRAFT EQUIPMENT

3.1 Aircraft

The helicopter used for the survey was an Aerospatial Astar 350D owned and operated by North Star Helicopters. Installation of the geophysical and ancillary equipment was carried out by Aerodat. The survey aircraft was flown at a nominal altitude at 60 meters.

3.2 Equipment

3.2.1 Electromagnetic System

The electromagnetic system was an Aerodat/Geonics 3 frequency system. Two vertical coaxial coil pairs were operated at 955 and 4130 Hz and a horizontal coplanar coil pair at 4500 Hz. The transmitter-receiver separation was 7 meters. In-phase and quadrature signals were measured simultaneously for the 3 frequencies with a time-constant of 0.1 seconds. The electromagnetic bird was towed 30 meters below the helicopter.

3.2.2 VLF-EM System

The VLF-EM System was a Herz 2A. This instrument measures the total field and vertical

quadrature component of two selected frequencies. The sensor was towed in a bird 15 meters below the helicopter.

The sensor aligned with the flight direction is designated as "LINE", and the sensor perpendicular to the line direction as "ORTHO". The "LINE" station used was NAA, Cutler Maine, 17.8 KHz or NLK, Jim Creek Washington, 24.8 KHz. The "ORTHO" station was NSS, Annapolis Maryland, 21.4 KHz. The NSS transmitter was operating on a very limited schedule and was not available during a large part of the survey.

3.2.3 Magnetometer

The magnetometer was a Geometrics G-803 proton precession type. The sensitivity of the instrument was 1 gamma at a 1.0 second sample rate. The sensor was towed in a bird 15 meters below the helicopter.

3.2.4 Magnetic Base Station

An IFG proton precession type magnetometer was operated at the base of operations to record diurnal variations of the earths magnetic field. The clock of the base station was synchronized with that of the airborne system

to facilitate later correlation.

3.2.5 Radar Altimeter

A Hoffman HRA-100 radar altimeter was used to record terrain clearance. The output from the instrument is a linear function of altitude for maximum accuracy.

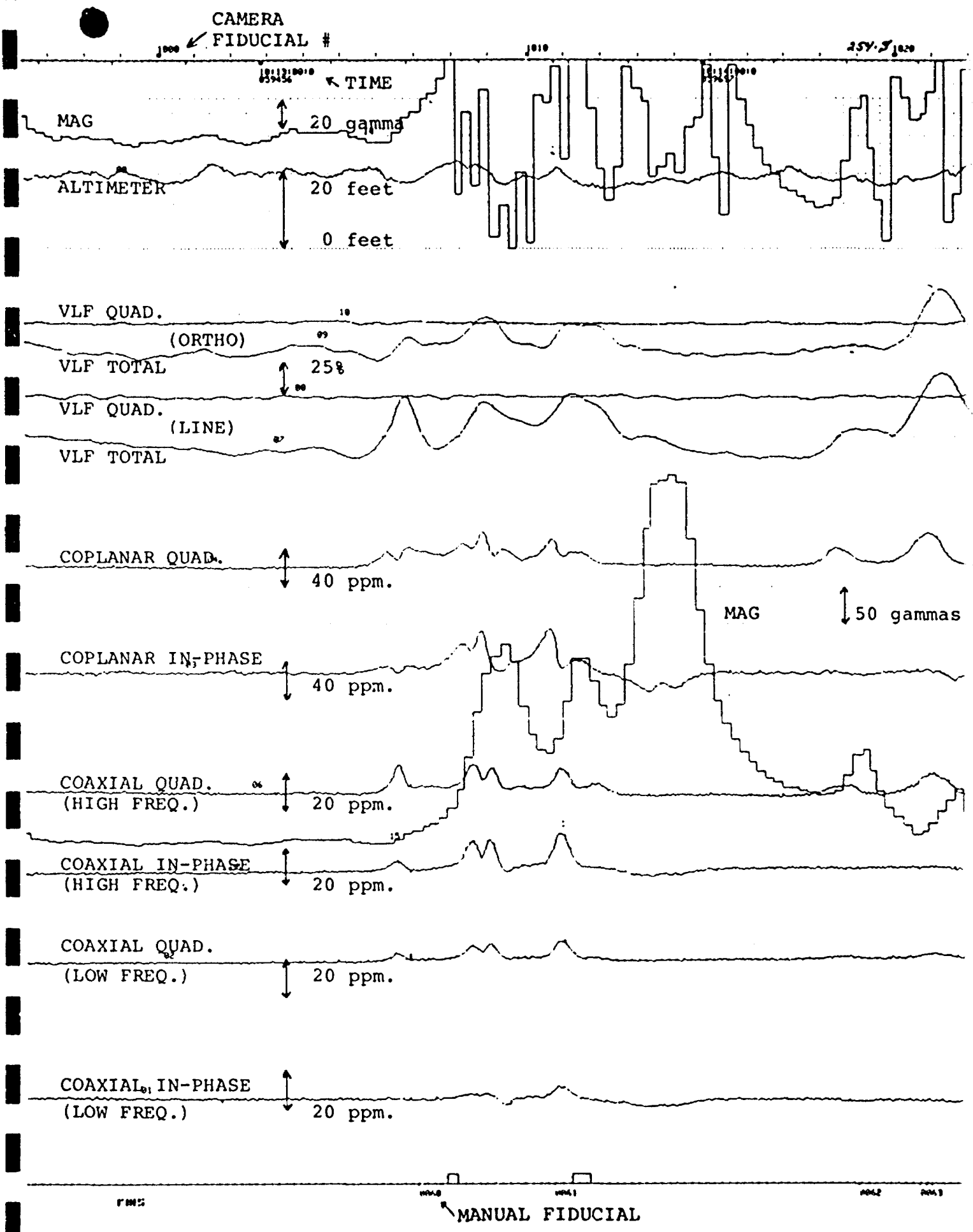
3.2.6 Tracking Camera

A Geocam tracking camera was used to record flight path on 35 mm film. The camera was operated in strip mode and the fiducial numbers for cross reference to the analog and digital data were imprinted on the margin of the film.

3.2.7 Analog Recorder

A RMS dot-matrix recorder was used to display the data during the survey. A sample record with channel identification and scales is presented on the following page.

ANALOG CHART



3.2.8 Digital Recorder

A Perle DAC/NAV data system recorded the survey data on cassette magnetic tape. Information recorded was as follows:

<u>Equipment</u>	<u>Interval</u>
EM	0.1 second
VLF-EM	0.5 second
magnetometer	0.5 second
altimeter	1.0 second
fiducial (time)	1.0 second
fiducial (manual)	0.2 second

4. DATA PRESENTATION

4.1 Base Map and Flight Path Recovery

The base map photomosaic at a scale of 1/15,840 was constructed from available aerial photography. The flight path was plotted manually on this base and digitized for use in the computer compilation of the maps. The flight path is presented with fiducials for cross reference to both the analog and digital data.

4.2 Electromagnetic Profile Maps

The electromagnetic data was recorded digitally at a high sample rate of 10/second with a small time constant of 0.1 second. A two stage digital filtering process was carried out to reject major sferic events, and reduce system noise.

Local atmospheric activity can produce sharp, large amplitude events that cannot be removed by conventional filtering procedures. Smoothing or stacking will reduce their amplitude but leave a broader residual response that can be confused with a geological phenomenon. To avoid this possibility, a computer algorithm searches out and rejects the major "sferic" events.

The signal to noise was further enhanced by the application of a low pass filter. The filter was applied digitally. It has zero phase shift which prevents any lag or peak displacement from occurring and it suppresses only variation with a wavelength less than about 0.25 seconds. This low effective time constant permits maximum profile shape resolution.

Following the filtering processes, a base level correction was made. The correction applied is a linear function of time that ensures that the corrected amplitude of the various inphase and quadrature components

is zero when no conductive or permeable source is present. This filtered and levelled data was then presented in profile map form.

The in-phase and quadrature responses of the coaxial 955 Hz configuration are plotted with the flight path and presented on the photomosaic base.

The in-phase and quadrature responses of the coaxial 4500 Hz and the coplanar 4130 Hz configuration are plotted with flight path and are available as a two colour overlay.

4.3 Magnetic Contour Maps

The aeromagnetic data was corrected for diurnal variations by subtraction of the digitally recorded base station magnetic profile. No correction for regional variation is applied.

The corrected profile data was interpolated onto a regular grid at a 2.5 mm interval using a cubic spline technique. The grid provided the basis for threading the presented contours at a 10 gamma interval.

4.4 VLF-EM Contour and Profile Maps

The VLF-EM "LINE" signal, was compiled in map form. The mean response level of the total field signal was removed and the data was gridded and contoured at an interval of 2%. When the "ORTHO" signal was available it was compiled in a similar fashion.

4.5 Electromagnetic Conductor Symbolization

The electromagnetic profile maps were used to identify those anomalies with characteristics typical of bedrock conductors. The in-phase and quadrature response amplitudes at 4130 Hz were digitally applied to a phasor diagram for the vertical half-plane model and estimates of conductance (conductivity thickness) were made. The conductance levels were divided into categories as indicated in the map legend; the higher the number, the higher the estimated conductivity thickness product.

As discussed in Appendix I the conductance should be used as a relative rather than absolute guide to conductor quality. A conductance value of less than 2 mhos is typical for conductive overburden material and electrolytic conductors in faults and shears. Values greater than 4 mhos generally indicate some electronic conduction by certain metallic sulphides and/or graphite. Gold, although highly conductive, is not expected to occur in sufficient concentration to directly produce an electromagnetic anomaly; however, accessory mineralization such as pyrite or

graphite can produce a measurable response.

With the aid of the profile maps, responses of similar characteristics may be followed from line to line and conductor axes identified.

The distinction between conductive bedrock and overburden anomalies is not always clear and some of the symbolized anomalies may not be of bedrock origin. It is also possible that a response may have been mistakenly attributed to overburden and therefore not included in the symbolization process. For this reason, as geological and other geophysical information becomes available, reassessment of the significance of the various conductors is recommended.

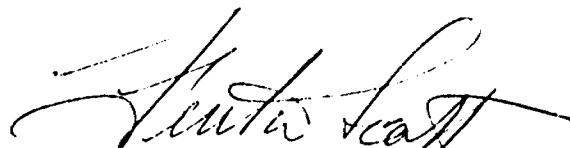
4.6 INTERPRETATION MAPS

The conductive trends are shown and discriminated for descriptive purposes.

These conductors are described below:

- 1 Moderate, one quarter mile, slightly magnetic conductor adjacent to cross-cutting magnetic low.
- 2 Weak conductor, three-quarter miles long, along north flank of magnetic high.
- 3 One-quarter mile conductor along crest of formational magnetic feature.
- 4 Weak conductor along north flank of magnetic feature.
- 5 Cross-cutting trend demonstrated by VLF response. Left-lateral faulting shown by displacement of iron formation.

Respectfully submitted,



Fenton Scott, P. Eng.

JUNE 8, 1983.

APPENDIX I

GENERAL INTERPRETIVE CONSIDERATIONS

Electromagnetic

The Aerodat 3 frequency system utilizes 2 different transmitter-receiver coil geometries. The traditional coaxial coil configuration is operated at 2 widely separated frequencies and the horizontal coplanar coil pair is operated at a frequency approximately aligned with one of the coaxial frequencies.

The electromagnetic response measured by the helicopter system is a function of the "electrical" and "geometrical" properties of the conductor. The "electrical" property of a conductor is determined largely by its conductivity and its size and shape; the "geometrical" property of the response is largely a function of the conductors shape and orientation with respect to the measuring transmitter and receiver.

Electrical Considerations

For a given conductive body the measure of its conductivity or conductance is closely related to the measured phase shift between the received and transmitted electromagnetic field. A small phase shift indicates a relatively high conductance, a large phase shift lower conductance. A small phase shift results in a large in-phase to quadrature

ratio and a large phase shift a low ratio. This relationship is shown quantitatively for a vertical half-plane model on the accompanying phasor diagram. Other physical models will show the same trend but different quantitative relationships.

The phasor diagram for the vertical half-plane model, as presented, is for the coaxial coil configuration with the amplitudes in ppm as measured at the response peak over the conductor. To assist the interpretation of the survey results the computer is used to identify the apparent conductance and depth at selected anomalies. The results of this calculation are presented in table form in Appendix I and the conductance and in-phase amplitude are presented in symbolized form on the map presentation.

The conductance and depth values as presented are correct only as far as the model approximates the real geological situation. The actual geological source may be of limited length, have significant dip, its conductivity and thickness may vary with depth and/or strike and adjacent bodies and overburden may have modified the response. In general the conductance estimate is less affected by these limitations than the depth estimate but both should be considered a relative rather than absolute guide to the anomalies properties.

Conductance in mhos is the reciprocal of resistance in ohms and in the case of narrow slab like bodies is the product of electrical conductivity and thickness.

Most overburden will have an indicated conductance of less than 2 mhos; however, more conductive clays may have an apparent conductance of say 2 to 4 mhos. Also in the low conductance range will be electrolytic conductors in faults and shears.

The higher ranges of conductance, greater than 4 mhos, indicate that a significant fraction of the electrical conduction is electronic rather than electrolytic in nature. Materials that conduct electronically are limited to certain metallic sulphides and to graphite. High conductance anomalies, roughly 10 mhos or greater are generally limited to sulphide or graphite bearing rocks.

Sulphide minerals with the exception of sphalerite, cinnabar and stibnite are good conductors; however, they may occur in a disseminated manner that inhibits electrical conduction through the rock mass. In this case the apparent conductance can seriously under rate the quality of the conductor in geological terms. In a similar sense the relatively non-conducting sulphide minerals noted above may be present in significant concentration in association with minor conductive

sulphides, and the electromagnetic response only relate to the minor associate mineralization. Indicated conductance is also of little direct significance for the identification of gold mineralization. Although gold is highly conductive it would not be expected to exist in sufficient quantity to create a recognizable anomaly but minor accessory sulphide mineralization could provide a useful indirect indication.

In summary the estimated conductance of a conductor can provide a relatively positive identification of significant sulphide or graphite mineralization; however, a moderate to low conductance value does not rule out the possibility of significant economic mineralization.

Geometrical Considerations

Geometrical information about the geologic conductor can often be interpreted from the profile shape of the anomaly. The change in shape is primarily related to the change in inductive coupling among the transmitter, the target, and the receiver.

In the case of a thin, steeply dipping, sheet-like conductor, the coaxial coil pair will yield a near symmetric peak over the conductor. On the other hand the coplanar coil pair will pass through a null couple relationship and yield a minimum over the conductor, flanked by positive side lobes. As the dip of the conductor decreases from vertical, the coaxial

anomaly shape changes only slightly, but in the case of the coplanar coil pair the side lobe on the down dip side strengthens relative to that on the up dip side.

As the thickness of the conductor increases, induced current flow across the thickness of the conductor becomes relatively significant and complete null coupling with the coplanar coils is no longer possible. As a result, the apparent minimum of the coplanar response over the conductor diminishes with increasing thickness, and in the limiting case of a fully 3 dimensional body or a horizontal layer or half-space, the minimum disappears completely.

A horizontal conducting layer such as overburden will produce a response in the coaxial and coplanar coils that is a function of altitude (and conductivity if not uniform). The profile shape will be similar in both coil configurations with an amplitude ratio (coplanar/coaxial) of about 4/1.*

In the case of a spherical conductor, the induced currents are confined to the volume of the sphere, but not relatively restricted to any arbitrary plane as in the case of a sheet-like form. The response of the coplanar coil pair directly over the sphere may be up to 8* times greater than that of the coaxial coil pair.

In summary a steeply dipping, sheet-like conductor will display a decrease in the coplanar response coincident with the peak of the coaxial response. The relative strength of this coplanar null is related inversely to the thickness of the conductor; a pronounced null indicates a relatively thin conductor. The dip of such a conductor can be inferred from the relative amplitudes of the side-lobes.

Massive conductors that could be approximated by a conducting sphere will display a simple single peak profile form on both coaxial and coplanar coils, with a ratio between the coplanar to coaxial response amplitudes as high as 8.*

Overburden anomalies often produce broad poorly defined anomaly profiles. In most cases the response of the coplanar coils closely follow that of the coaxial coils with a relative amplitude ratio of 4.*

Occasionally if the edge of an overburden zone is sharply defined with some significant depth extent, an edge effect will occur in the coaxial coils. In the case of a horizontal conductive ring or ribbon, the coaxial response will consist of two peaks, one over each edge; whereas the coplanar coil will yield a single peak.

* It should be noted at this point that Aerodat's definition of the measured ppm unit is related to the primary field sensed in the receiving coil without normalization to the maximum coupled (coaxial configuration). If such normalization were applied to the Aerodat units, the amplitude of the coplanar coil pair would be halved.

Magnetics

The Total Field Magnetic Map shows contours of the total magnetic field, uncorrected for regional variation. Whether an EM anomaly with a magnetic correlation is more likely to be caused by a sulphide deposit than one without depends on the type of mineralization. An apparent coincidence between an EM and a magnetic anomaly may be caused by a conductor which is also magnetic, or by a conductor which lies in close proximity to a magnetic body. The majority of conductors which are also magnetic are sulphides containing pyrrhotite and/or magnetite. Conductive and magnetic bodies in close association can be, and often are, graphite and magnetite. It is often very difficult to distinguish between these cases. If the conductor is also magnetic, it will usually produce an EM anomaly whose general pattern resembles that of the magnetics. Depending on the magnetic permeability of the conducting body, the amplitude of the inphase EM anomaly will be weakened, and if the conductivity is also weak, the inphase EM anomaly may even be reversed in sign.

VLF Electromagnetics

The VLF-EM method employs the radiation from powerful military radio transmitters as the primary signals. The magnetic field associated with the primary field is elliptically polarized in the vicinity of electrical conductors. The Herz Totem uses three coils in the X. Y. Z. configuration to measure the total field and vertical quadrature component of the polarization ellipse.

The relatively high frequency of VLF 15-25 KHz provides high response factors for bodies of low conductance. Relatively "disconnected" sulphide ores have been found to produce measurable VLF signals. For the same reason, poor conductors such as sheared contacts, breccia zones, narrow faults, alteration zones and porous flow tops normally produce VLF anomalies. The method can therefore be used effectively for geological mapping. The only relative disadvantage of the method lies in its sensitivity to conductive overburden. In conductive ground the depth of exploration is severely limited.

The effect of strike direction is important in the sense of the relation of the conductor axis relative to the energizing electromagnetic field. A conductor aligned along a radius drawn from a transmitting station will be

in a maximum coupled orientation and thereby produce a stronger response than a similar conductor at a different strike angle. Theoretically it would be possible for a conductor, oriented tangentially to the transmitter to produce no signal. The most obvious effect of the strike angle consideration is that conductors favourably oriented with respect to the transmitter location and also near perpendicular to the flight direction are most clearly rendered and usually dominate the map presentation.

The total field response is an indicator of the existence and position of a conductivity anomaly. The response will be a maximum over the conductor, without any special filtering, and strongly favour the upper edge of the conductor even in the case of a relatively shallow dip.

The vertical quadrature component over steeply dipping sheet like conductor will be a cross-over type response with the cross-over closely associated with the upper edge of the conductor.

The response is a cross-over type due to the fact that it is the vertical rather than total field quadrature component that is measured. The response shape is due largely to geometrical rather than conductivity considerations and the distance between the maximum and minimum on either side of the cross-over is related to target depth. For a given target geometry, the larger this distance the greater the

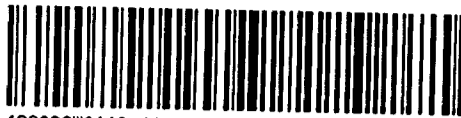
depth.

The amplitude of the quadrature response, as opposed to shape is function of target conductance and depth as well as the conductivity of the overburden and host rock. As the primary field travels down to the conductor through conductive material it is both attenuated and phase shifted in a negative sense. The secondary field produced by this altered field at the target also has an associated phase shift. This phase shift is positive and is larger for relatively poor conductors. This secondary field is attenuated and phase shifted in a negative sense during return travel to the surface. The net effect of these 3 phase shifts determine the phase of the secondary field sensed at the receiver.

A relatively poor conductor in resistive ground will yield a net positive phase shift. A relatively good conductor in more conductive ground will yield a net negative phase shift. A combination is possible whereby the net phase shift is zero and the response is purely in-phase with no quadrature component.

A net positive phase shift combined with the geometrical cross-over shape will lead to a positive quadrature response on the side of approach and a negative on the side of departure. A net negative phase shift would produce the reverse. A further sign reversal occurs with a 180 degree

change in instrument orientation as occurs on reciprocal line headings. During digital processing of the quadrature data for map presentation this is corrected for by normalizing the sign to one of the flight line headings.

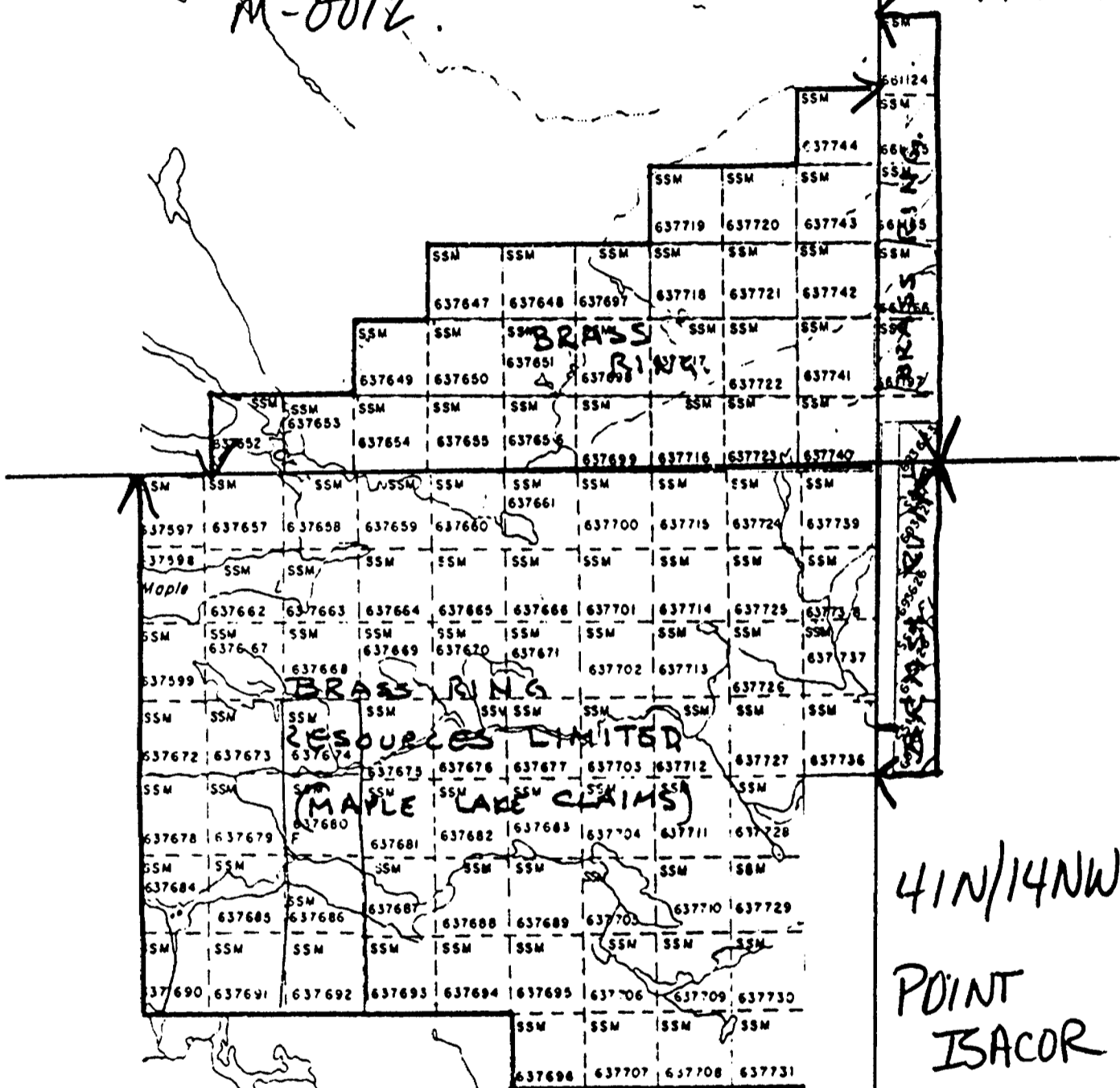


42C03SW0113 41N13NE0012 DAVID LAKES

900

42C/04SE
DAVID LK
M-0012

MISHIBISMA
LK.
42C/03SW
M-0007



41N/13NE
M-20. PILOT HARBOUR

41N/14NW
POINT
ISACOR
M-0006

2.5659

AREA OF
47 N / 13 NE
PILOT HARBOUR

M-20

DISTRICT OF
THUNDER BAY

SAULT STE. MARIE
MINING DIVISION

SCALE: 1-INCH = 40 CHAINS

LEGEND

- PATENTED LAND
- CROWN LAND SALE
- LEASES
- LOCATED LAND
- LICENSE OF OCCUPATION
- MINING RIGHTS ONLY
- SURFACE RIGHTS ONLY
- ROADS
- IMPROVED ROADS
- KING'S HIGHWAYS
- RAILWAYS
- POWER LINES
- MARSH OR MUSKOG
- MINES

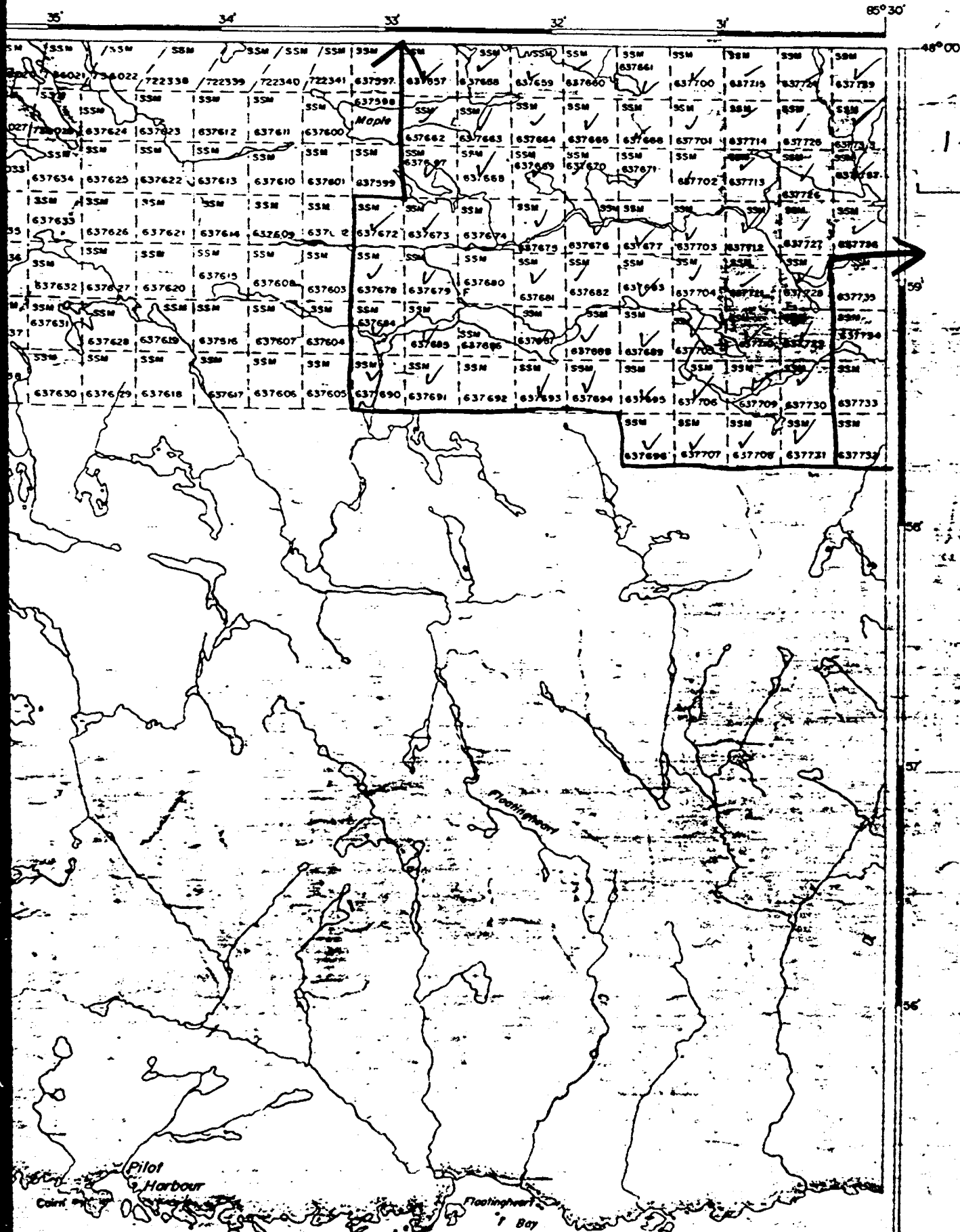
NOTES

400' Surface Rights Reservation
 Land under Lake Superior withdrawn
 from storage by Order in Council
 dated April 30, 1912

DATE OF ISSUE

JAN 3 1984

Ministry of Natural Resources
TORONTO



85°30'

48°00'

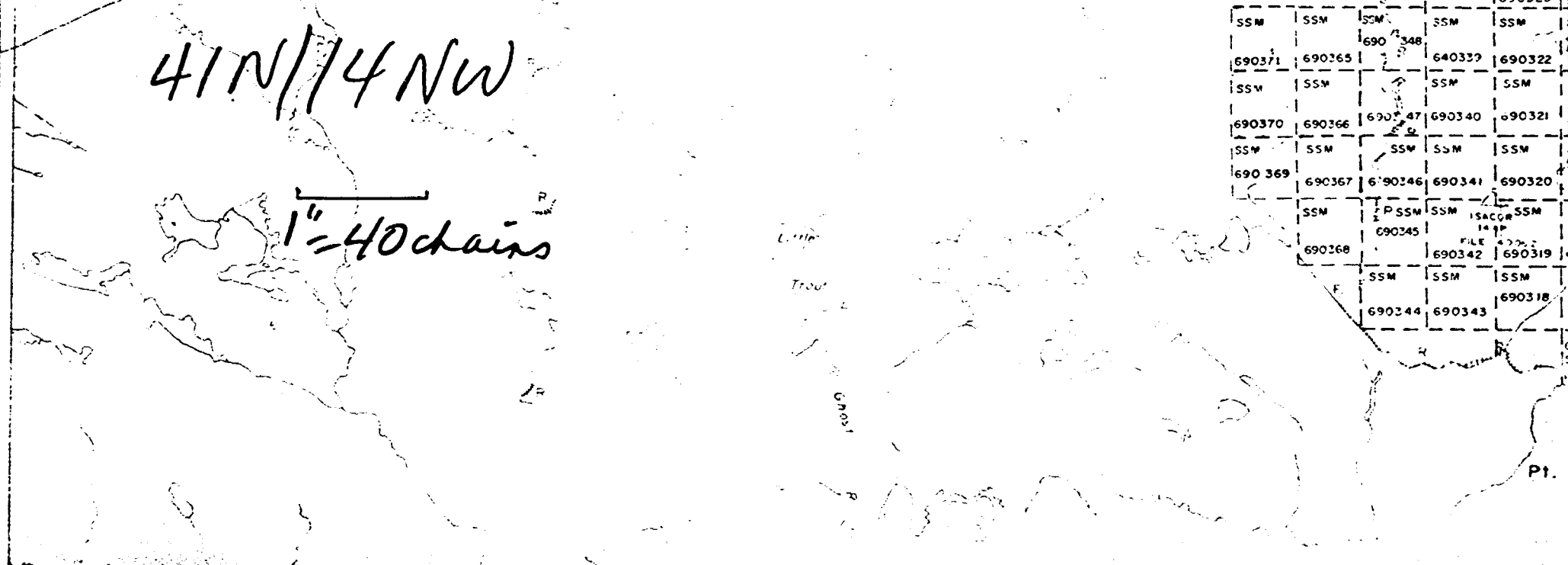
693522	Missing 693605	693604	693597	693586	690893	690892	690573	690872	690853	690852	690832	690831	690810	690809	751709	751710	751719	751720	751730	751731	751743	751744					
SSM	SSM	SSM	SSM	SSM	SSM	SSM	SSM	SSM	SSM	SSM	SSM	SSM	SSM	SSM	SSM	SSM	SSM	SSM	SSM	SSM	SSM	SSM					
693621	693606	693603	693598	693585	690894	690891	690874	690871	690854	690851	690833	690830	690811	751701	751708	751711	751718	751721	751729	751732	751742	751745					
SSM	SSM	SSM	SSM	SSM	SSM	SSM	SSM	SSM	SSM	SSM	SSM	SSM	SSM	SSM	SSM	SSM	SSM	SSM	SSM	SSM	SSM	SSM					
693620	693607	693602	693589	693584	690895	690890	690875	690870	690855	690850	690834	690829	690812	751702	751707	751712	751717	751722	751728	751733	751744	751746					
SSM	SSM	SSM	SSM	SSM	SSM	SSM	SSM	SSM	SSM	SSM	SSM	SSM	SSM	SSM	SSM	SSM	SSM	SSM	SSM	SSM	SSM	SSM					
693619	693608	693601	693590	693583	690896	690889	690876	690869	690856	690849	690835	690828	690813	751703	751706	751713	751716	751723	751727	751734	751740	751747					
SSM	SSM	SSM	SSM	SSM	SSM	SSM	SSM	SSM	SSM	SSM	SSM	SSM	SSM	SSM	SSM	SSM	SSM	SSM	SSM	SSM	SSM	SSM					
693618	693609	693600	693591	693582	690897	690888	SSM	SSM	690868	690857	690848	690836	690827	690814	751704	751705	751714	751715	751724	751726	751735	751739	751748				
SSM	SSM	SSM	SSM	SSM	SSM	SSM	SSM	SSM	SSM	SSM	SSM	SSM	SSM	SSM	SSM	SSM	SSM	SSM	SSM	SSM	SSM	SSM	SSM				
693617	693610	693599	693592	693581	693574	690887	690878	690867	690858	690847	SSM	SSM	690826	690815	690808	690395	690391	690380	751725	751736	751738	751749					
SSM	SSM	SSM	SSM	SSM	SSM	SSM	SSM	SSM	SSM	SSM	SSM	SSM	SSM	SSM	SSM	SSM	SSM	SSM	SSM	SSM	SSM	SSM	SSM				
693629	693616	693611	693604	693593	693580	693575	690886	690873	690865	690853	690846	690838	690825	690816	690807	690397	690394	690382	690379	690357	690356	690331	SSM				
SSM	SSM	SSM	SSM	SSM	SSM	SSM	SSM	SSM	SSM	SSM	SSM	SSM	SSM	SSM	SSM	SSM	SSM	SSM	SSM	SSM	SSM	SSM	SSM				
693615	693612	693597	693594	693573	693576	690885	690880	690865	690860	690845	690833	690824	690817	690806	690398	690393	690383	690378	690358	690355	690332	690329					
SSM	SSM	SSM	SSM	SSM	SSM	SSM	SSM	SSM	SSM	SSM	SSM	SSM	SSM	SSM	SSM	SSM	SSM	SSM	SSM	SSM	SSM	SSM	SSM				
693614	693613	693596	693595	693572	693577	690884	690881	690864	690861	690844	690840	690823	690818	690805	690399	690392	690384	690377	690359	690354	690332	690328					
SSM	SSM	SSM	SSM	SSM	SSM	SSM	SSM	SSM	SSM	SSM	SSM	SSM	SSM	SSM	SSM	SSM	SSM	SSM	SSM	SSM	SSM	SSM	SSM				
690883	690892	690863	690862	690843	690841	690822	690804	690400	690391	690385	690376	690360	690353	690324	690327	690326	690442	690821	690820	690803	690801	690386	690375	690361	690352	690335	690325
SSM	SSM	SSM	SSM	SSM	SSM	SSM	SSM	SSM	SSM	SSM	SSM	SSM	SSM	SSM	SSM	SSM	SSM	SSM	SSM	SSM	SSM	SSM	SSM	SSM	SSM	SSM	SSM
690802	690389	690387	690374	690372	690336	690325	690324	690323	690322	690321	690320	690319	690318	690317	690316	690315	690314	690313	690312	690311	690310	690309	690308	690307	690306	690305	690304
SSM	SSM	SSM	SSM	SSM	SSM	SSM	SSM	SSM	SSM	SSM	SSM	SSM	SSM	SSM	SSM	SSM	SSM	SSM	SSM	SSM	SSM	SSM	SSM	SSM	SSM	SSM	SSM
690372	690364	690349	690338	690323	690322	690321	690320	690319	690318	690317	690316	690315	690314	690313	690312	690311	690310	690309	690308	690307	690306	690305	690304	690303	690302	690301	690300
SSM	SSM	SSM	SSM	SSM	SSM	SSM	SSM	SSM	SSM	SSM	SSM	SSM	SSM	SSM	SSM	SSM	SSM	SSM	SSM	SSM	SSM	SSM	SSM	SSM	SSM	SSM	SSM
690371	690365	690348	690337	690322	690321	690320	690319	690318	690317	690316	690315	690314	690313	690312	690311	690310	690309	690308	690307	690306	690305	690304	690303	690302	690301	690300	690299
SSM	SSM	SSM	SSM	SSM	SSM	SSM	SSM	SSM	SSM	SSM	SSM	SSM	SSM	SSM	SSM	SSM	SSM	SSM	SSM	SSM	SSM	SSM	SSM	SSM	SSM	SSM	SSM
690370	690366	690347	690340	690321	690320	690319	690318	690317	690316	690315	690314	690313	690312	690311	690310	690309	690308	690307	690306	690305	690304	690303	690302	690301	690300	690299	690298
SSM	SSM	SSM	SSM	SSM	SSM	SSM	SSM	SSM	SSM	SSM	SSM	SSM	SSM	SSM	SSM	SSM	SSM	SSM	SSM	SSM	SSM	SSM	SSM	SSM	SSM	SSM	SSM
690369	690367	690346	690341	690320	690319	690318	690317	690316	690315	690314	690313	690312	690311	690310	690309	690308	690307	690306	690305	690304	690303	690302	690301	690300	690299	690298	690297
SSM	SSM	SSM	SSM	SSM	SSM	SSM	SSM	SSM	SSM	SSM	SSM	SSM	SSM	SSM	SSM	SSM	SSM	SSM	SSM	SSM	SSM	SSM	SSM	SSM	SSM	SSM	SSM
690368	690345	690342	690319	690318	690317	690316	690315	690314	690313	690312	690311	690310	690309	690308	690307	690306	690305	690304	690303	690302	690301	690300	690299	690298	690297	690296	690295
SSM	SSM	SSM	SSM	SSM	SSM	SSM	SSM	SSM	SSM	SSM	SSM	SSM	SSM	SSM	SSM	SSM	SSM	SSM	SSM	SSM	SSM	SSM	SSM	SSM	SSM	SSM	SSM
690344	690343	690318	690317	690316	690315	690314	690313	690312	690311	690310	690309	690308	690307	690306	690305	690304	690303	690302	690301	690300	690299	690298	690297	690296	690295	690294	690293
SSM	SSM	SSM	SSM	SSM	SSM	SSM	SSM	SSM	SSM	SSM	SSM	SSM	SSM	SSM	SSM	SSM	SSM	SSM	SSM	SSM	SSM	SSM	SSM	SSM	SSM	SSM	SSM

POINT ISACOR

M-0006

41N/14NW

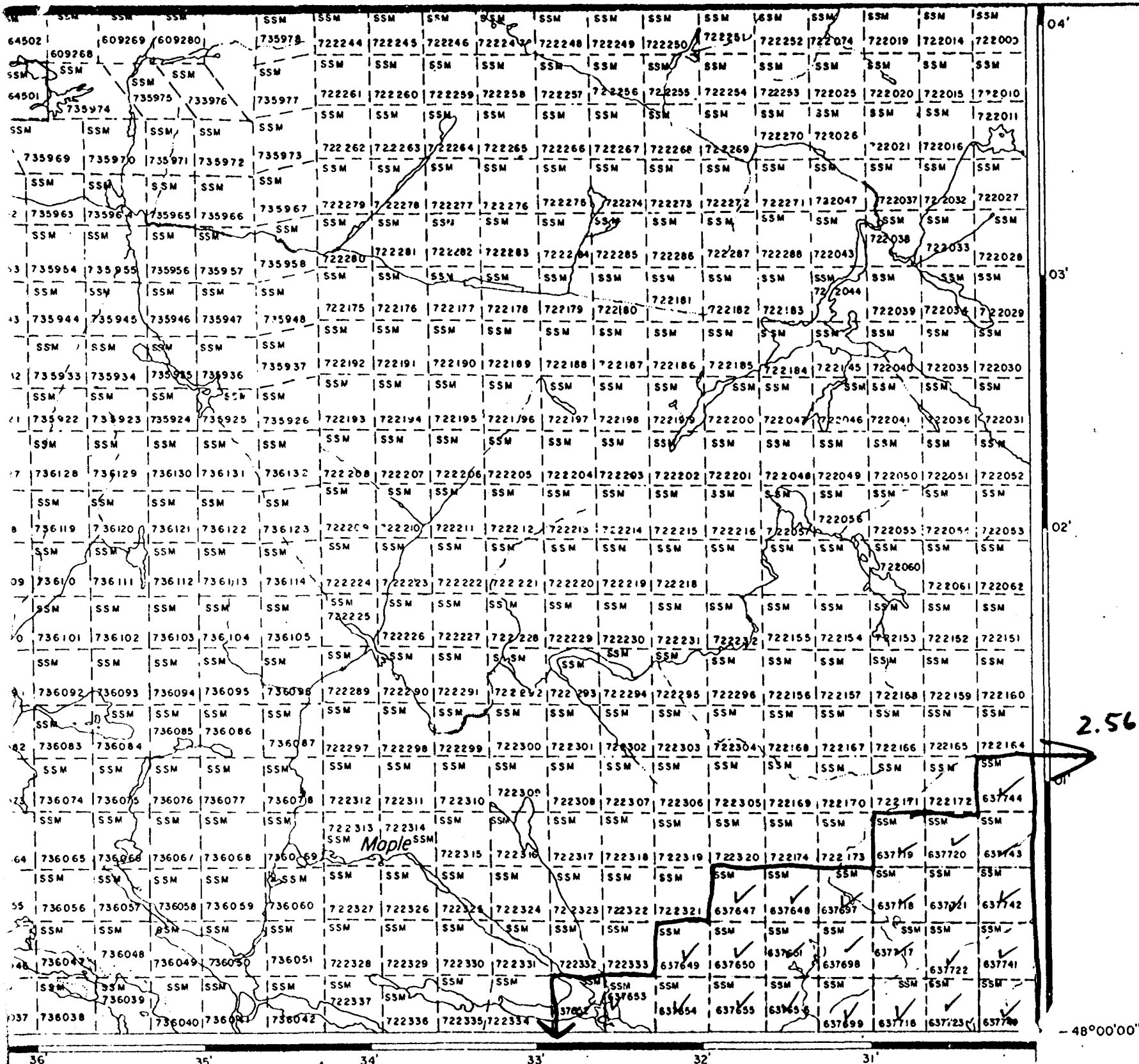
1"=40 chains



Pt.



1" = 40 chains (429/035W)



DAVID LAKES

M. A. 117

1/4 2nd ALLOT

1" = 40 chains

85°30'00"

File: 2.5659



Ministry of Natural Resources

Report of Work (Geophysical, Geological, Geochemical and Expenditures)

2.5659

The Mining Act

Instructions: - Please type or print. - If number of mining claims traversed exceeds space on this form, attach a list. Note: - Only days credits calculated in the "Expenditures" section may be entered in the "Expend. Days Cr." columns. - Do not use shaded areas below.

Form header section containing: Type of Survey(s) Airborne Electromagnetic, Magnetic, VLF-EM; Claim Holder(s) David Krutz; Address 639 2nd Avenue Val d'Or Que. J9P 1W5; Survey Company Aerodat Limited; Date of Survey (from & to) 10 Day 2 Mo. 83 Yr. 15 Day 2 Mo. 83 Yr.; Total Miles of line Cut 3.15; Name and Address of Author (of Geo-Technical report) Fenton Scott 17 Malabar Place, Don Mills, Ontario M3B 1A4

Credits Requested per Each Claim in Columns at right

Mining Claims Traversed (List in numerical sequence)

Table with 3 columns: Special Provisions, Geophysical, Days per Claim. Rows include: For first survey: Enter 40 days; For each additional survey: Enter 20 days; Man Days: Complete reverse side; Airborne Credits: Note: Special provisions credits do not apply to Airborne Surveys.

Table with 4 columns: Mining Claim Prefix, Mining Claim Number, Expend. Days Cr., Mining Claim Prefix, Mining Claim Number, Expend. Days Cr. Contains list of claims: SSM 661124, 25, 661165, 66, 661197.

Form section: Expenditures (excludes power stripping); Type of Work Performed: MINING LANDS SECTION; Calculation of Expenditure Days Credits: Total Expenditures \$ + 15 = Total Days Credits; Instructions: Total Days Credits may be apportioned at the claim holder's choice.

Date: October 28/83; Recorded Holder or Agent (Signature): [Signature]

For Office Use Only: Total Days Cr. Recorded: 378; Date Recorded: November 1, 1983; Mining Recorder: [Signature]; Date Approved or Recorded: Dec 15/83

Certification Verifying Report of Work: I hereby certify that I have a personal and intimate knowledge of the facts set forth in the Report of Work annexed hereto, having performed the work or witnessed same during and/or after its completion and the annexed report is true.

Name and Postal Address of Person Certifying: Fenton Scott 17 Malabar Place, Don Mills, Ontario M3B 1A4; Date Certified: Oct 28/83; Certified by (Signature): [Signature]



Ministry of
Natural
Resources

Report of Work
(Geophysical, Geological,
Geochemical and Expenditures)

2.5659

Instructions: - Please type or print.
- If number of mining claims traversed exceeds space on this form, attach a list.
Note: - Only days credits calculated in the "Expenditures" section may be entered in the "Expend. Days Cr." columns.
- Do not use shaded areas below.

The Mining Act

File: 2.5659

Type of Survey(s) Airborne Electromagnetic, Magnetic, VLF-EM	Township or Area David Lakes
Claim Holder(s) David Recoskie	Prospector's Licence No. K19810
Address 106 Johnson Street Val d'Or Quebec J9P 3H7	
Survey Company Aerodat Limited	Date of Survey (from & to) 10 2 83 15 2 83 Day Mo. Yr. Day Mo. Yr.
Name and Address of Author (of Geo-Technical report) Fenton Scott 17 Malabar Place Don Mills Ontario	
Total Miles of line Cut 28	

Credits Requested per Each Claim in Columns at right

Mining Claims Traversed (List in numerical sequence)

Special Provisions	Geophysical	Days per Claim
For first survey: Enter 40 days. (This includes line cutting)	- Electromagnetic	
	- Magnetometer	
For each additional survey: using the same grid: Enter 20 days (for each)	- Radiometric	
	- Other	
	Geological	
	Geochemical	

Man Days	Geophysical	Days per Claim
Complete reverse side and enter total(s) here	- Electromagnetic	
	- Magnetometer	
	- Radiometric	
	- Other	
	Geological	
	Geochemical	

Airborne Credits	Electromagnetic	Days per Claim
Note: Special provisions credits do not apply to Airborne Surveys.	Magnetometer	25.2
	Radiometric VLF	25.2

Mining Claim			Mining Claim		
Prefix	Number	Expend. Days Cr.	Prefix	Number	Expend. Days Cr.
SSM	637697	✓	SSM	637720	✓
	98	✓		21	✓
	99	✓		22	✓
	700	✓		23	✓
	01	✓		24	✓
	02	✓		25	✓
	03	✓		26	✓
	04	✓		27	✓
	05	✓		28	✓
	06	✓		29	✓
	07	✓		30	✓
	08	✓		31	✓
	09	✓		736	✓
	10	✓		37	✓
	11	✓		38	✓
	12	✓		39	✓
	13	✓		40	✓
	14	✓		41	✓
	15	✓		42	✓
	16	✓		43	✓
	17	✓		44	✓
	18	✓			
	19	✓			

RECEIVED
NOV 1 1983
P.M.
HAULT STC. MARIE
11810, 10, 11, 12, 13, 14, 15, 16

Expenditures (excludes power stripping)

Type of Work Performed **RECEIV**

Performed on Claim(s) **NOV 3 1983**

MINING LAND: SEC.

Calculation of Expenditure Days Credits

Total Expenditures \$ + 15 =

Total Days Credits

Instructions
Total Days Credits may be apportioned at the claim holder's choice. Enter number of days credits per claim selected in columns at right.

Total number of mining claims covered by this report of work. **44**

For Office Use Only

Total Days Cr. Recorded	Date Recorded	Mining Recorder
3326.4	November 1, 1983	Frank St. Jules
	Date Approved as Recorder	Branch Supervisor
	Dec 15 1983	[Signature]

Date **October 28/83**

Recorded Holder or Agent (Signature) **[Signature]**

Certification Verifying Report of Work

I hereby certify that I have a personal and intimate knowledge of the facts set forth in the Report of Work annexed hereto, having performed the work or witnessed same during and/or after its completion and the annexed report is true.

Name and Postal Address of Person Certifying
Fenton Scott 17 Malabar Place Don Mills Ontario

Date Certified **Oct 28/83**

Certified by (Signature) **[Signature]**



Report of Work
(Geophysical, Geological,
Geochemical and Expenditures)

2.5659

File: 2.5659

- Instructions: - Please type or print.
- If number of mining claims traversed exceeds space on this form, attach a list.
Note: - Only days credits calculated in the "Expenditures" section may be entered in the "Expend. Days Cr." columns
- Do not use shaded areas below.

The Mining Act

Type of Survey(s) Airborne Electromagnetic, Magnetic, VLF	Township or Area David Lakes Pt. Isacor, Pilot Harbour
Claim Holder(s) Real Mangeau	Prospector's Licence No. K19808
Address 1070 - 7ieme Rue Apt. #21 Val d'Or Quebec J9P 3R5	
Survey Company Aerodat Limited	Date of Survey (from & to) 20 2 83 15 2 83
Name and Address of Author (o. Geo-Technical report) Fenton Scott 17 Malabar Place, Don Mills, Ontario	
Total Miles of line Cut 89	

Credits Requested per Each Claim in Columns at right			Mining Claims Traversed (List in numerical sequence)					
Special Provisions	Geophysical	Days per Claim	Mining Claim		Expend. Days Cr.	Mining Claim		Expend. Days Cr.
			Prefix	Number		Prefix	Number	
For first survey: Enter 40 days. (This includes line cutting) For each additional survey: using the same grid: Enter 20 days (for each)	Electromagnetic		SSM	637647	✓	SSM	637670	✓
	Magnetometer			48	✓		71	✓
	Radiometric			49	✓		72	✓
	Other			50	✓		73	✓
Man Days Complete reverse side and enter total(s) here	Geological			51	✓		675	✓
	Geochemical			52	✓		76	✓
	Geophysical			53	✓		77	✓
	Electromagnetic			54	✓		78	✓
	Magnetometer			55	✓		79	✓
	Radiometric			56	✓		681	✓
	Other			57	✓		82	✓
	Geological			58	✓		83	✓
	Geochemical			59	✓		84	✓
	Electromagnetic			60	✓		85	✓
	Magnetometer			61	✓		687	✓
	Radiometric			62	✓		88	✓
				63	✓		89	✓
				64	✓		90	✓
				65	✓		91	✓
				66	✓		693	✓
				67	✓		94	✓
				68	✓		95	✓
				69	✓		96	✓

BAULT STE MARIE
MINING DIV.
RECEIVED
NOV 1 1983
A.M.
11 10 11 12 11 13

Expenditures (excludes power stripping)

Type of Work Performed	Performed on Claim(s)
	NOV 1 1983
MINING LANDS SECT.	

Calculation of Expenditure Days Credits

Total Expenditures	Total Days Credits
\$	15

Date: 28 October/83
Recorded Holder or Agent (Signature): *[Signature]*

For Office Use Only

Total Days Cr. Recorded	Date Recorded	Mining Recorder
3,477.6	November 1, 1983	<i>[Signature]</i>
	Date Approved as Recorded	Branch Director
	83.12.01	<i>[Signature]</i>

Certification Verifying Report of Work

I hereby certify that I have a personal and intimate knowledge of the facts set forth in the Report of Work annexed hereto, having performed the work or witnessed same during and/or after its completion and the annexed report is true.

Name and Postal Address of Person Certifying
Fenton Scott 17 Malabar Place Don Mills, Ontario M3B 1A4

Date Certified: Oct 28/83
Certified by (Signature): *[Signature]*

Filed on SSM 637647



Ministry of Natural Resources

Report of Work
(Geophysical, Geological,
Geochemical and Expenditures)

File: 2-5659

Instructions: - Please type or print.
- If number of mining claims traversed exceeds space on this form, attach a list.
Note: - Only days credits calculated in the "Expenditures" section may be entered in the "Expend. Days Cr." columns.
- Do not use shaded areas below.

The Mining Act

Type of Survey(s) Airborne Electromagnetic, Magnetic, VLF-EM		Township or Area Pt. Isacor, Pilot Harbor													
Claim Holder(s) Raymond Champagne		Prospector's Licence No. M21154													
Address c/o 169 Perreault Avenue Vald'or Que. J9P 2H1															
Survey Company Aerodat Limited		Date of Survey (from & to)													
		<table border="1"> <tr> <td>Day</td> <td>Mo.</td> <td>Yr.</td> <td>Day</td> <td>Mo.</td> <td>Yr.</td> </tr> <tr> <td>10</td> <td>2</td> <td>83</td> <td>10</td> <td>2</td> <td>83</td> </tr> </table>		Day	Mo.	Yr.	Day	Mo.	Yr.	10	2	83	10	2	83
Day	Mo.	Yr.	Day	Mo.	Yr.										
10	2	83	10	2	83										
		Total Miles of line Cut 2.4													
Name and Address of Author (of Geo-Technical report) Fenton Scott 17 Malabar Place, Don Mills, Ontario.															

Credits Requested per Each Claim in Columns at right		
Special Provisions For first survey: Enter 40 days. (This includes line cutting) For each additional survey: using the same grid: Enter 20 days (for each)	Geophysical	Days per Claim
	- Electromagnetic	
	- Magnetometer	
	- Radiometric	
	- Other	
	Geological	
	Geochemical	
Man Days Complete reverse side and enter total(s) here	Geophysical	Days per Claim
	- Electromagnetic	
	- Magnetometer	
	- Radiometric	
	- Other	
	Geological	
	Geochemical	
Airborne Credits Note: Special provisions credits do not apply to Airborne Surveys.	Electromagnetic	Days per Claim 25.2
	Magnetometer	25.2
	Radiometric	25.2

Mining Claims Traversed (List in numerical sequence)					
	Mining Claim		Expend. Days Cr.		
	Prefix	Number			
	SSM	693624	✓		
		25	✓		
		26	✓		
		27	✓		

SAULY STE MARIE
RECEIVED
NOV 1 1983
A.M.
11:16

Expenditures (excludes power stripping)

Type of Work Performed

Performed on Claim(s)

Calculation of Expenditure Days Credits

Total Expenditures \$ [] + 15 = Total Days Credits []

Instructions
Total Days Credits may be apportioned at the claim holder's choice. Enter number of days credits per claim selected in columns at right.

Total number of mining claims covered by this report of work. 4

For Office Use Only		
Total Days Recorded	Date Recorded	Mining Recorder
302.4	November 1, 1983	Mr. St. Jules
	Date Entered or Recoded	Branch Director
	Dec 15/83	

Date	Recorded Holder or Agent (Signature)
Oct. 28/83	[Signature]

Certification Verifying Report of Work

I hereby certify that I have a personal and intimate knowledge of the facts set forth in the Report of Work annexed hereto, having performed the work or witnessed same during and/or after its completion and the annexed report is true.

Name and Postal Address of Person Certifying	
Fenton Scott 17 Malabar Place, Don Mills, Ontario.	
Date Certified	Certified by (Signature)
Oct 28/83	[Signature]

Filed on SSM 637647



Report of Work
(Geophysical, Geological,
Geochemical and Expenditures)

Instructions: - Please type or print.
- If number of mining claims traversed exceeds space on this form, attach a list.
Note: - Only days credits calculated in the "Expenditures" section may be entered in the "Expend. Days Cr." columns.
- Do not use shaded areas below.

The Mining Act

Type of Survey(s) Airborne Electromagnetic, magnetic, VLF-EM		Township or Area Michibishu Lake	
Claim Holder(s) Rene Allard		Pt. Sacor, Pilot Harbor	
Address Vassan, Co. Abitibi, Quebec		Prospector's Licence No. M21155	
Survey Company Aerodat Limited		Date of Survey (from & to) Day Mo. 83 Day Mo. 83 19 2 83 20 2 83	Total Miles of line Cut 0.63
Name and Address of Author (of Geo-Technical report)			

Credits Requested per Each Claim in Columns at right

Special Provisions	Geophysical	Days per Claim
		Days per Claim
For first survey: Enter 40 days. (This includes line cutting) For each additional survey: using the same grid: Enter 20 days (for each)	- Electromagnetic	
	- Magnetometer	
	- Radiometric	
	- Other	
	Geological	
Man Days Complete reverse side and enter total(s) here RECEIVED NOV 3 1983 MINING LANDS SECTION	Geophysical	Days per Claim
	- Electromagnetic	
	- Magnetometer	
	- Radiometric	
	- Other	
Airborne Credits Note: Special provisions credits do not apply to Airborne Surveys.	Electromagnetic	25.2
	Magnetometer	25.2
	Radiometric VLF	25.2

Mining Claims Traversed (List in numerical sequence)			Mining Claims Traversed (List in numerical sequence)		
Prefix	Number	Expend. Days Cr.	Prefix	Number	Expend. Days Cr.
SSM	693623				

SAULT STE. MARIE
RECEIVED
NOV 1 1983

Expenditures (excludes power stripping)

Type of Work Performed

Performed on Claim(s)

Calculation of Expenditure Days Credits

Total Expenditures \$ + 15 = Total Days Credits

Instructions

Total Days Credits may be apportioned at the claim holder's choice. Enter number of days credits per claim selected in columns at right.

Date **Oct 28 1983** Recorded Holder or Agent (Signature) *[Signature]*

For Office Use Only

Total Days Cr. Recorded	Date Recorded	Mining Recorder
75.6	November 1, 1983	<i>Mr. St Jules</i>
	Date Approved as Recorded	Branch Director
	<i>Dec 15 1983</i>	<i>[Signature]</i>

Certification Verifying Report of Work

I hereby certify that I have a personal and intimate knowledge of the facts set forth in the Report of Work annexed hereto, having performed the work or witnessed same during and/or after its completion and the annexed report is true.

Name and Postal Address of Person Certifying
Fenton Scott 17 Malabar Place, Don Mills, Ontario

Date Certified **Oct. 28/83** Certified by (Signature) *[Signature]*



Geotechnical
Report
Approval

File
2.5659

Nov. 9/83

Mining Lands Comments

To: Geophysics *Roger Barlow.*

Comments

<input checked="" type="checkbox"/> Approved	<input type="checkbox"/> Wish to see again with corrections	Date <i>Dec 5/83</i>	Signature <i>R Barlow</i>
--	---	----------------------	---------------------------

To: Geology - Expenditures

Comments

<input type="checkbox"/> Approved	<input type="checkbox"/> Wish to see again with corrections	Date	Signature
-----------------------------------	---	------	-----------

To: Geochemistry

Comments
<i>L.D.</i>

<input type="checkbox"/> Approved	<input type="checkbox"/> Wish to see again with corrections	Date	Signature
-----------------------------------	---	------	-----------

To: Mining Lands Section, Room 6462, Whitney Block. (Tel: 5-1380)



Ministry of Natural Resources

File _____

GEOPHYSICAL - GEOLOGICAL - GEOCHEMICAL
TECHNICAL DATA STATEMENT

TO BE ATTACHED AS AN APPENDIX TO TECHNICAL REPORT
FACTS SHOWN HERE NEED NOT BE REPEATED IN REPORT
TECHNICAL REPORT MUST CONTAIN INTERPRETATION, CONCLUSIONS ETC.

Type of Survey(s) AIRBORNE E.M., MAGNETIC, V.L.F.
Township or Area PILOT HARBOUR, Pt ISACOK, 2C.
Claim Holder(s) ROCCO A SCHIRALLI IN TRUST.
Survey Company AEKODAT LIMITED
Author of Report FENTON SCOTT
Address of Author 17 MALABAR PLACE, DON MILLS
Covering Dates of Survey _____
(linecutting to office)
Total Miles of Line Cut _____

MINING CLAIMS TRAVERSED
List numerically

(prefix) (number)

SPECIAL PROVISIONS
CREDITS REQUESTED

DAYS
per claim

ENTER 40 days (includes
line cutting) for first
survey.

ENTER 20 days for each
additional survey using
same grid.

- Geophysical
- Electromagnetic _____
- Magnetometer _____
- Radiometric _____
- Other _____
Geological _____
Geochemical _____

AIRBORNE CREDITS (Special provision credits do not apply to airborne surveys)

Magnetometer 25 Electromagnetic 25 Radiometric 25
(enter days per claim)

DATE: June 24/83 SIGNATURE: Fenton Scott
Author of Report or Agent

Res. Geol. _____ Qualifications _____

Previous Surveys

File No.	Type	Date	Claim Holder

TOTAL CLAIMS _____

OFFICE USE ONLY

If space insufficient, attach list

SELF POTENTIAL.

Instrument _____ Range _____

Survey Method _____

Corrections made _____

RADIOMETRIC

Instrument _____

Values measured _____

Energy windows (levels) _____

Height of instrument _____ Background Count _____

Size of detector _____

Overburden _____

(type, depth - include outcrop map)

OTHERS (SEISMIC, DRILL WELL LOGGING ETC.)

Type of survey _____

Instrument _____

Accuracy _____

Parameters measured _____

Additional information (for understanding results) _____

AIRBORNE SURVEYS

Type of survey(s) MAGNETOMETEL B.M. V.L.F.

Instrument(s) GEOMETRILS G-803 AGROBAT 3 FREQ. TOTEM 2A

(specify for each type of survey)

Accuracy 0.5 GAMMAS 1 PPM. 1%

(specify for each type of survey)

Aircraft used AF STAK HELICOPTER AEROSPATIALE.

Sensor altitude 150' 100' 150'

Navigation and flight path recovery method VISUAL NAVIGATION, MANUAL AND

AUTOMATIC FIDUCIALS - ON BOARD CAMERA

Aircraft altitude 200' Line Spacing 660'

Miles flown over total area 317 Over claims only 63

REPORT ON THE MAPLE LAKE PROPERTY, BRASS RING RESOURCES INC.

TABLE I - CLAIM LIST

SSM.	637647	to	637673	27
	637675	to	637679	5
	637681	to	637685	5
	637687	to	637691	5
	637693	to	637731	39
	637736	to	637744	9
	661124	to	661125	2
	661165	to	661166	2
	661197			1
	693623	to	693627	5

Total: 100 claims

Total of 100 contiguous claims for approximately 1619 hectares (4000 acres). All the claims are located in Sault Ste. Marie mining division, Ontario.

1983 07 07

2.5659

Mrs. M.V. St. Jules
Mining Recorder
875 Queen Street East
P.O. Box 669
Sault Ste. Marie, Ontario
P6A 5N2

Dear Madam:

We have received reports and maps for an Airborne Geophysical (Electromagnetic and Magnetometer) survey submitted on Mining Claims SSM 637647 et al in the Area of Pilot Harbour.

This material will be examined and assessed and a statement of assessment work credits will be issued.

We do not have a copy of the report of work which is normally filed with you prior to the submission of this technical data. Please forward a copy as soon as possible.

Yours very truly,

E.F. Anderson
Director
Land Management Branch

Whitney Block, Room 6450
Queen's Park
Toronto, Ontario
M7A 1W3
Phone: (416) 965-1380

A. Barr:mc

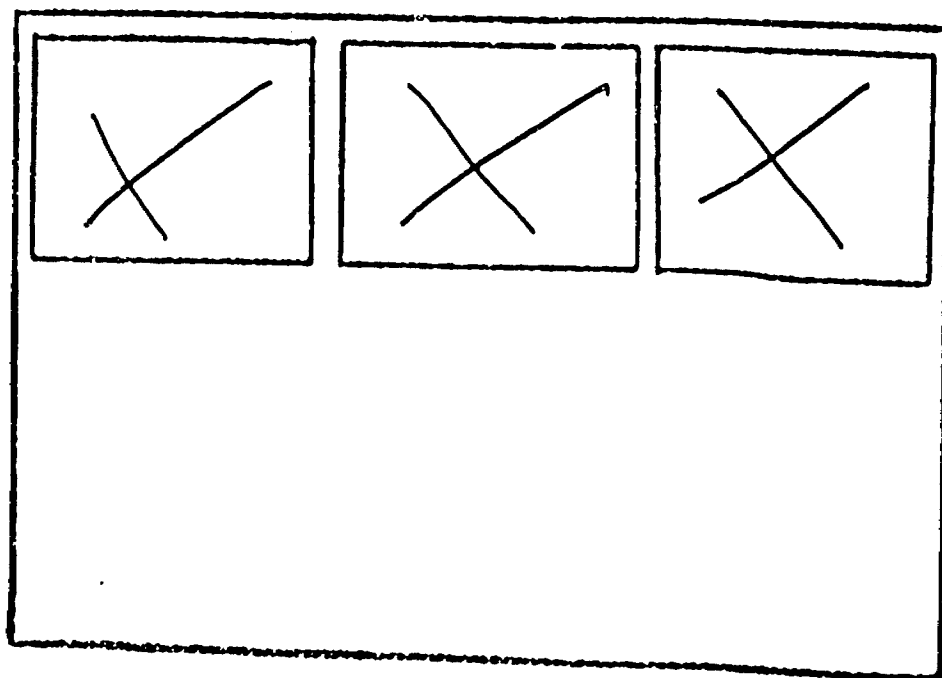
cc: Rocco A. Schiralli (In Toddt)
Suite 420
181 University Avenue
Toronto, Ontario
M5H 3M7

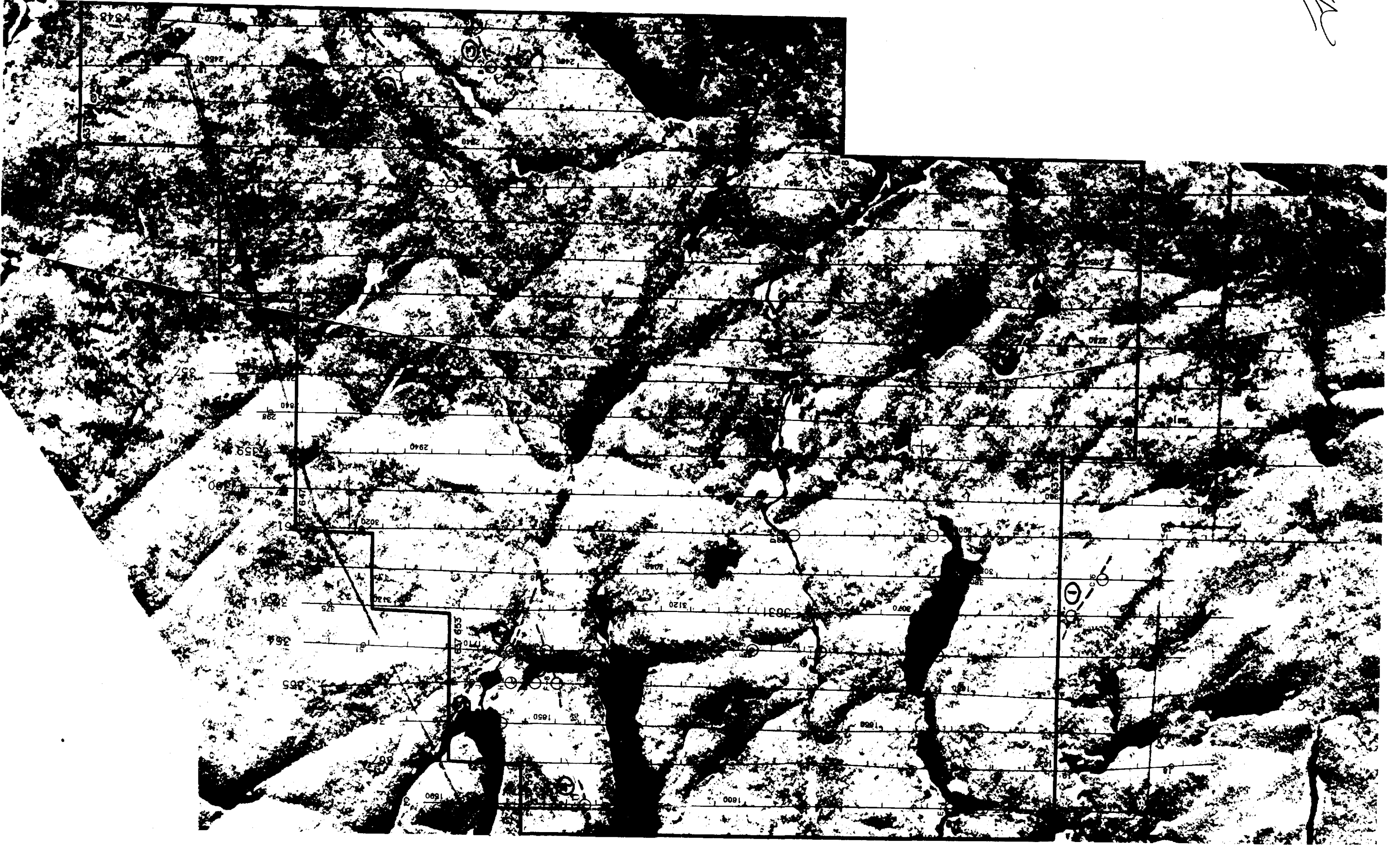
cc: Fenton Scott
17 Malabar Place
Don Mills, Ontario
M3B 1A4

SEE ACCOMPANYING
MAP(S) IDENTIFIED AS
41N/13NE-0012 #1

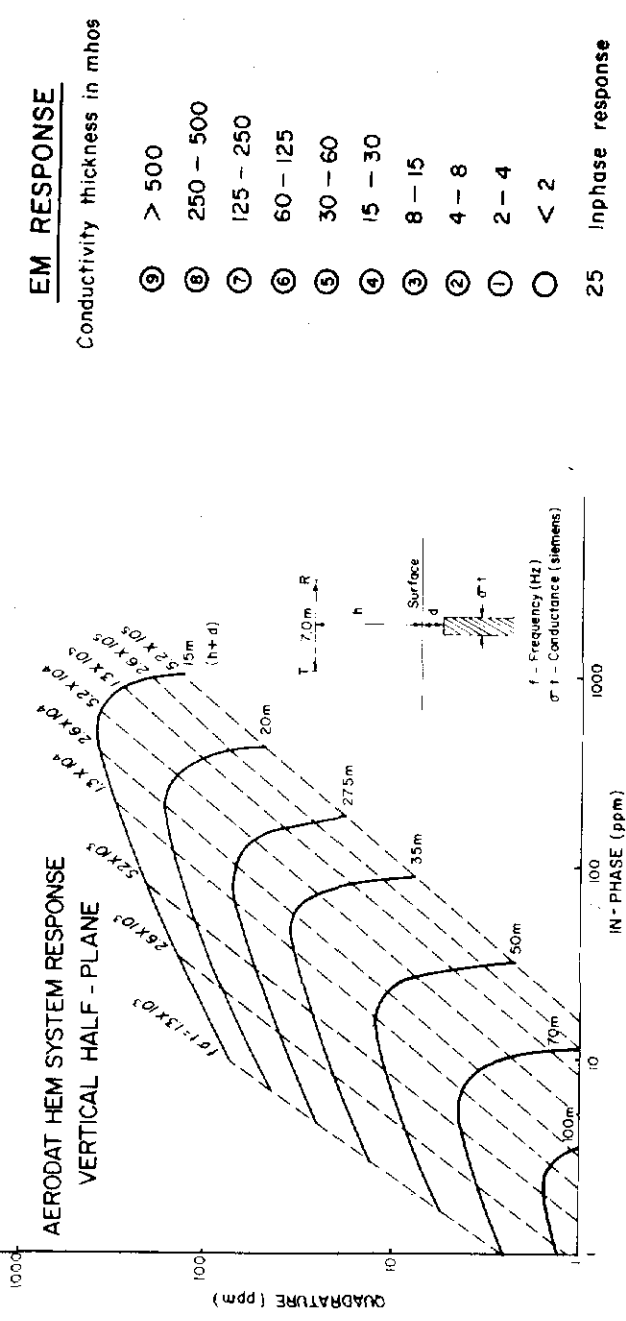
_____ 2
_____ 3

LOCATED IN THE MAP
CHANNEL IN THE FOLLOWING
SEQUENCE (X)





Horizontal control based on photo laydown
 Average bird height 30 metres
 Line spacing 660 feet



PROSPECTING GEOPHYSICS LTD.

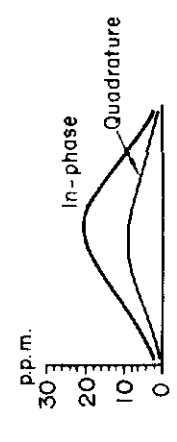
AIRBORNE ELECTROMAGNETIC SURVEY

BRASS RING RESOURCES
 MAPLE LAKE CLAIMS
 ONTARIO

DATE: February, March 1983
 N.T.S. No: 41N, 42C
 MAP No: 1

AERODAT LIMITED

Michael Scott



41N/13NE - 0012 #1

PROSPECTING GEOPHYSICS LTD.

AIRBORNE ELECTROMAGNETIC SURVEY

PROFILES

BRASS RING RESOURCES
 MAPLE LAKE CLAIMS
 ONTARIO

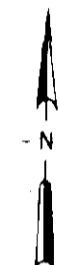
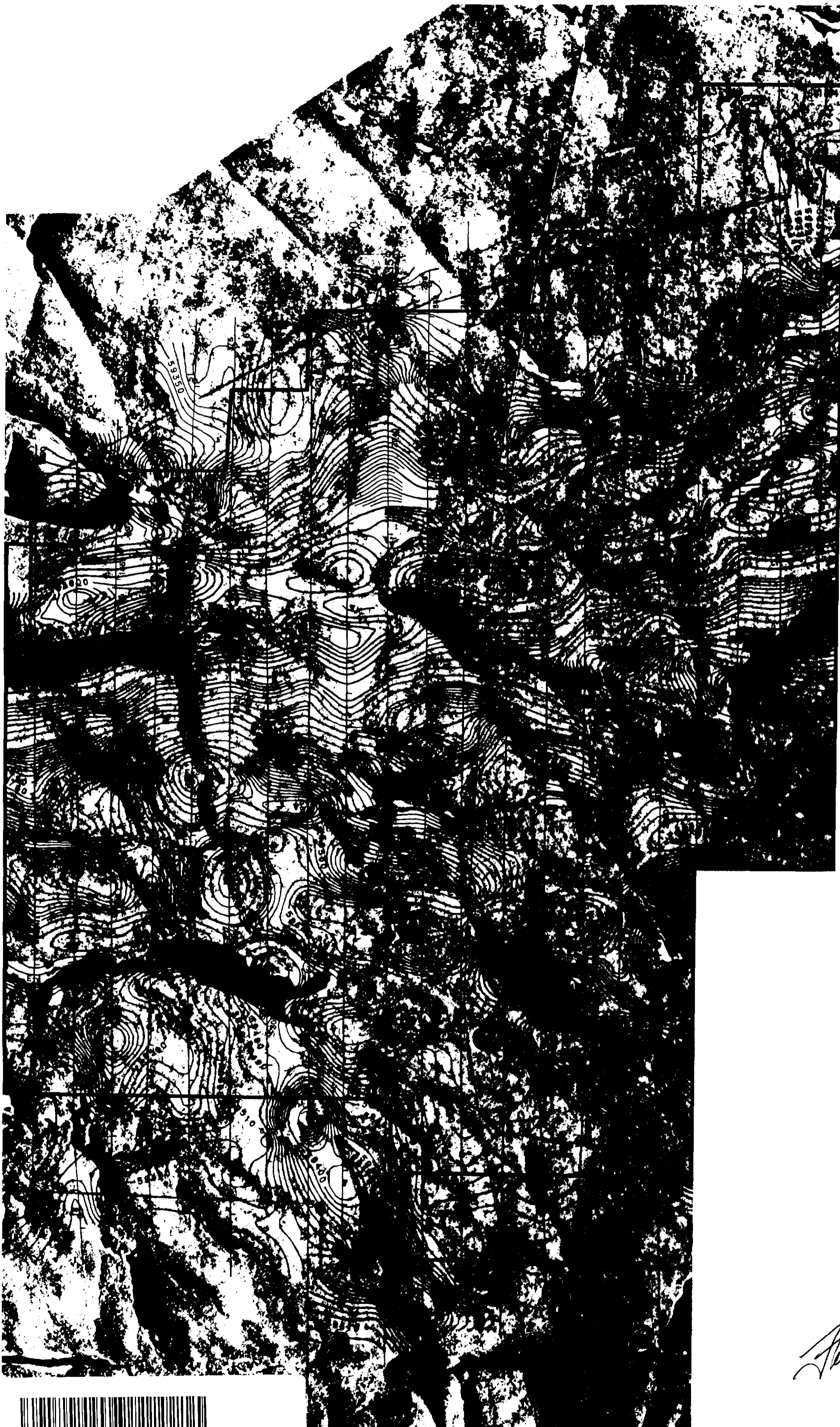
SCALE 1/15,840
 1/2 Mile
 1/2 Kilometre

DATE: February, March 1983
 N.T.S. No: 41N, 42C
 MAP No: 2

AERODAT LIMITED

Michael Scott





LEGEND

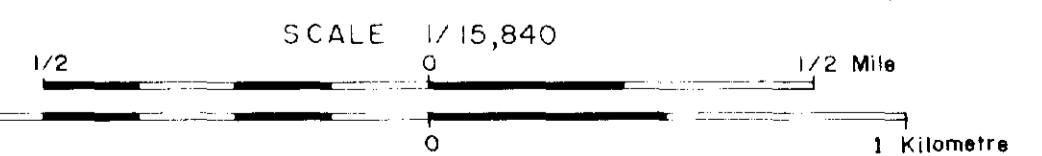
- 100 gammas
- 50 gammas
- 10 gammas

41N/13NE-0012 #2

PROSPECTING GEOPHYSICS LTD.

TOTAL FIELD MAGNETIC MAP

BRASS RING RESOURCES
MAPLE LAKE CLAIMS
ONTARIO

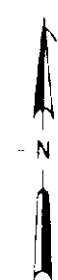
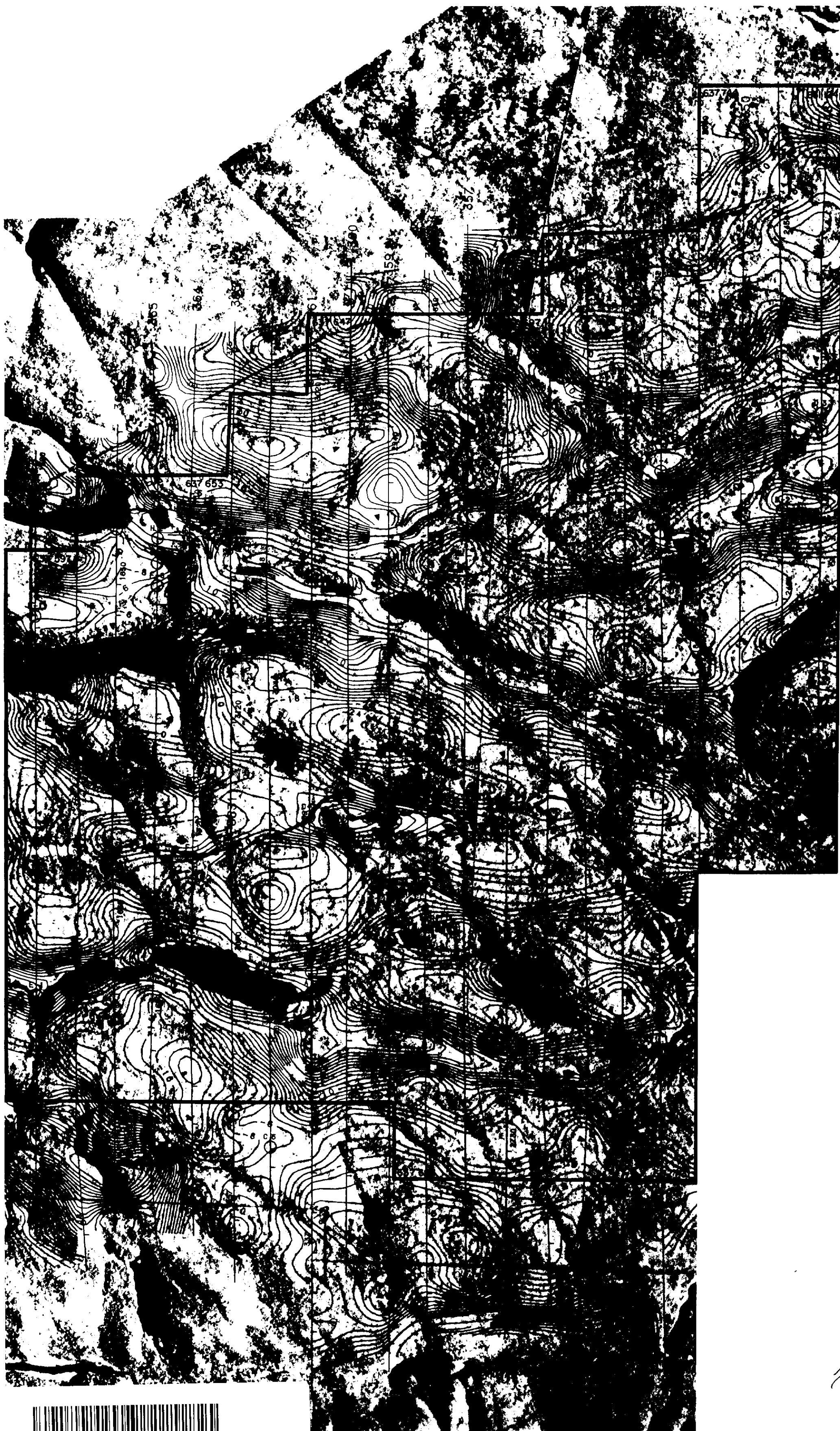


Scott

AERODAT LIMITED

DATE:	February, March 1983
N.T.S. No.:	41N, 42C
MAP No.:	3





LEGEND

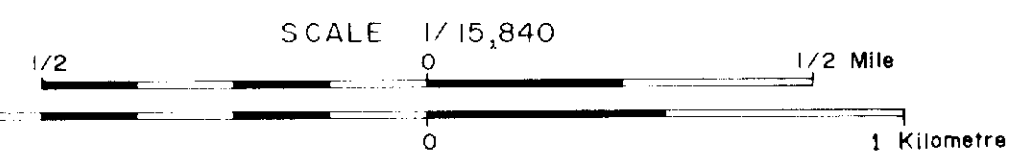
- 100 gammas
- 50 gammas
- 10 gammas

41N/13NE-0012 #3

PROSPECTING GEOPHYSICS LTD.

VLF-EM
"LINE" NAA (MAINE) 17.8 KHz.

BRASS RING RESOURCES
MAPLE LAKE CLAIMS
ONTARIO



Handwritten signature

AERODAT LIMITED

DATE: February, March 1983

N.T.S. No: 41N, 42C

MAP No: 4

