

63.4860



42C04NE0025 63.4860 PUKASKWA RIVER

010

ADDENDUM

A  
REPORT  
ON  
THE  
1986 DRILLING PROGRAM  
ON  
THE  
MISHIBISHU - PUKASKWA PROPERTY  
OF  
CAPTAIN CONSOLIDATED RESOURCES LTD.

Oakville, Ontario  
August 11, 1987

J. F. White

OM 86-7-P-260



42C04NE0025 63.4860 PUKASKWA RIVER

010C

TABLE OF CONTENTS

Introduction.....1  
Property Location and Access.....1  
History.....1  
General Location Map.....2  
Dril Program.....3  
Claim Location Map.....7  
Approx. Grid Locations.....8

Appendix I     Drill Hole Logs, Location Sketches and Sections

Apprndix II    Letter Re Drill Core Analyses

## INTRODUCTION

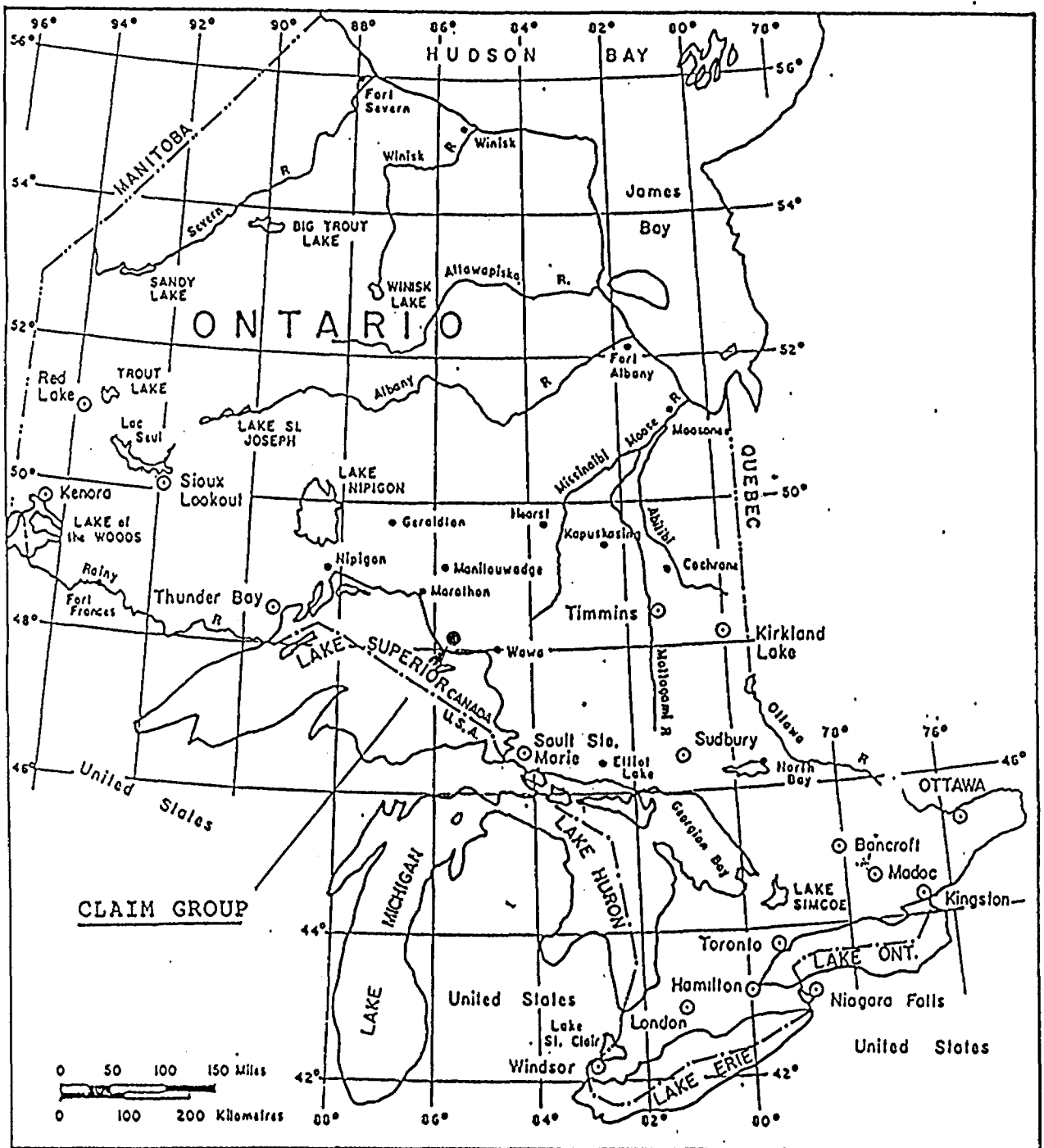
This report has been prepared as an addendum to the report entitled "Exploration Report for Captain Consolidated Resources Ltd., and Koala Resources Limited in the Mishubishi - Pukaskwa Area - Ontario" dated December 22, 1986 by Fenton Scott, P.Eng. Based on the recommendations by Mr. Scott, a series of nine drill holes were completed on the Captain Consolidated Resources Ltd. property during the period November ~~28~~ to December 6, 1986. The purpose of this report is to describe the drilling program and document the results.

## PROPERTY LOCATION AND ACCESS

The property consists of 124 contiguous mineral claims located in the Sault Ste. Marie Mining Division at  $48^{\circ}10'$  north latitude and  $84^{\circ}35'$  east longitude. Wawa, the nearest community, lies 40 miles to the east-southeast of the property. Access is by helicopter.

## HISTORY

Prior work history on the property is covered in Mr. Scott's report together with details and results of the 1986 program of line cutting and grid location, geological surveying, rock and soil sampling, and



CAPTAIN CONSOLIDATED RESOURCES LTD.

CLAIM GROUP

MISHIBISHU - PUKASKWA AREA

SAULT STE. MARIE M.D.

GENERAL LOCATION MAP

VLFEM surveying. Mr. Scott's report recommended nine drill holes to test selected geophysical targets. These holes were completed in December 1986.

#### DRILL PROGRAM

A helicopter-supported drill program was initiated on November 18, 1986. Mr. Will Brown acted as field supervisor under the direction of Mr. Terry Ryan, geologist. Canadian Longyear Limited of North Bay, Ontario was the drill contractor. The work was done using a J.K.S. 300 diamond drill. Drill core was stored in boxes at the drill camp. Split core samples were taken of all sulphide zones and quartz veins and run for gold. The drilling was filed for assessment credit with the Ontario Ministry of Natural Resources on March 26, 1987. Total footage drilled was 2307 feet. Detailed core logs are attached hereto as Appendix I. Individual hole locations are shown on the claim sketch plans also included in Appendix I.

The following is a brief description of each of the drill holes.

#### D.D. Hole No. H-1

Location: Claim No. SSM691704, Grid No. 8 Line 4+05 West, 10 metres north of baseline.

Bearing: S30<sup>0</sup>E Dip: -45<sup>0</sup> Length: 257'

Purpose: Test coincident anomalous rock assay and VLF conductor.

Results: Hole encountered largely mafic and cherty tuff. Conductor is attributed to pyrite and pyrrhotite concentrations at depth of 236.8' to 242.6'. No significant assays.

D.D. Hole No. H-2

Location: Claim No. SSM691665, Grid Nos. 11 and 12, 10 metres east of Line R 1 E, 135 metres north of baseline.

Bearing: S40°E Dip: -45° Length: 257'

Purpose: Test coincident anomalous rock assays and VLF conductor.

Results: Hole encountered a narrow zone of magnetite and sulphide iron formation (11 feet) at a depth of 78'. This is considered the cause of the VLF conductor. Remainder of the hole is logged essentially as mafic to intermediate tuff. No significant assays.

D.D. Hole No. H-3

Location: Claim SSM708431, Grids 11 and 12 Line R3+30E, 200 metres South.

Bearing: S30°W Dip: -45° Length 257'

Purpose: Test "gold-bearing limonite zone with coincident soil geochemical anomaly."

Results: From 17 to 37 feet split core averaged 214 ppb Au. No other assays of significance. Most of the hole encountered white biotite granite.

D.D. Hole No. H-4

Location: Claim SSM691781 Grid 17 Line C4W, 300 metres south of claim line.

Bearing: S23°W Dip: -45° Length: 267'

Purpose: Test VLFEM anomaly with coincident gold values in soil samples.

Results: Conductor caused by massive sulphide stringers at 216' - 226'. Hole encountered mafic tuff. One 5 foot core sample from 132 to 137 feet returned an original assay result of more than 10,000 ppb Au (more than 0.41 oz./ton) Initial check analyses confirmed these results but later analysis of these sample pulps and of re-sampled core returned only traces. See attached letter by F. Scott (Appendix II).

D.D. Hole No. H-5

Location: Claim SSM691790, Grids 14 and 15, Line 4+20E, 2+20N.

Bearing: S30<sup>0</sup>W Dip: -45<sup>0</sup> Length 269'

Purpose: Test coincident EM and soil anomaly.

Result: Conductor may be caused by a fault zone. Hole is mainly mafic tuff. One core sample from 162' to 167' returned an original assay of 3840 ppb Au (0.11 oz. Au/ton). Initial check analyses confirmed these results. Later analyses of these sample pulps and of re-sampled core gave only traces. See attached letter by F. Scott (Appendix II).

D.D. Hole No. H-6

Location: Claim SSM691797, Grid 13, 15 metres west of Line 9, 165 metres north of baseline.

Bearing: South Dip: -45<sup>0</sup> Length: 285'

Purpose: "Test EM target with high rock sample gold content."

Results: Conductor is attributed to sulphide accumulations as fracture fillings and stringers between 77.7' and 142.5'. No significant assays.

D.D. Hole No. H-7

Location: Claim SSM708439, Grid 20, 100 metres northeast of Line 13 at 1+00 North.

Bearing: South Dip: -45<sup>0</sup> Length: 251'

Purpose: "Test sulphide iron formation with elevated gold content in bedrock and soils."

Results: The iron formation was encountered from 67.6' to 84.6' in the hole. Balance of the hole was essentially mafic tuff and garnetiferous metasediment. No significant assays.

D.D. Hole No. H-8

Location: Claim SSM691762, Grid 16, Line 7, 90 metres south of claim line-baseline.

Bearing: South Dip:  $-45^{\circ}$  Length: 227'

Purpose: Test "coincident EM anomaly with higher gold content in bedrock."

Results: Hole encountered sulphide iron formation from 65.8' to 191.8'. Locally sulphide content is 25%. No significant assays.

D.D. Hole No. H-9

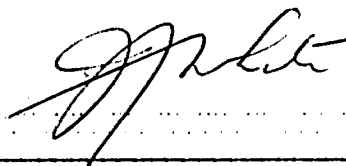
Location: Claim SSM691762, Grid 16, Line 6, 20 metres north of baseline.

Bearing: South Dip:  $-45^{\circ}$  Length: 227'

Purpose: Test coincident EM and soil anomaly.

Results: Sulphide rich iron formation encountered between 105' and 111'. Top of the hole is in white biotite granite, balance is in tuff and metasediment. All assays less than 15 ppb Au.

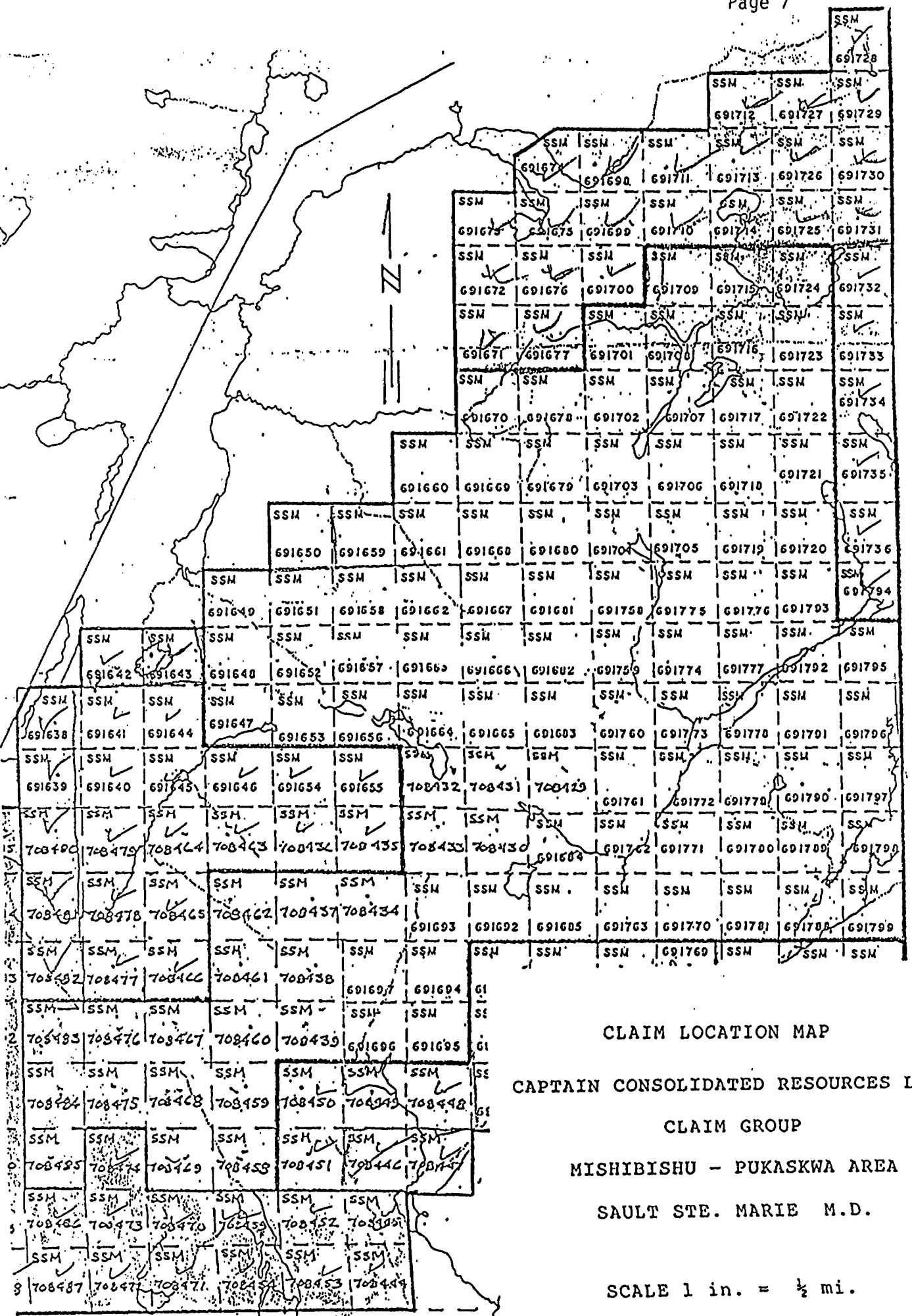
Respectfully submitted



J. F. White

Oakville, Ontario  
August 11, 1987





CLAIM LOCATION MAP

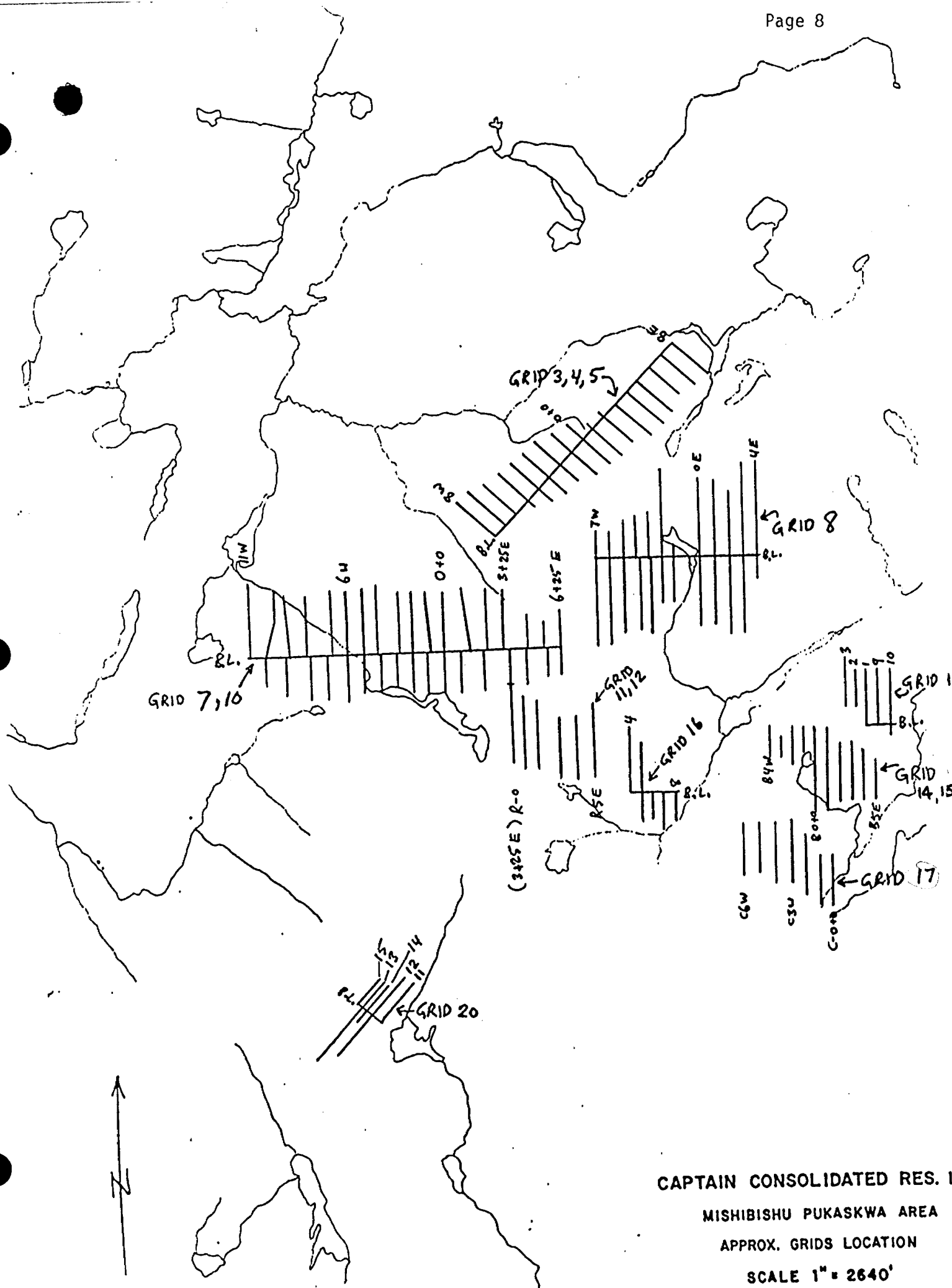
CAPTAIN CONSOLIDATED RESOURCES LT

CLAIM GROUP

MISHIBISHU - PUKASKWA AREA

SAULT STE. MARIE M.D.

SCALE 1 in. = 1/2 mi.



CAPTAIN CONSOLIDATED RES. L  
MISHIBISHU PUKASKWA AREA  
APPROX. GRIDS LOCATION  
SCALE 1" = 2640'

APPENDIX I





Complete this form and related sketch in duplicate.

Fill in on every page

Hole No. H-4 Page No. 2

Drilling Company		Collar Elevation	Bearing of hole from true North	Total Footage	Dip of Hole at Collar	Address/Location where core stored	Map Reference No.	Claim No.	
Date Hole Started	Date Completed	Date Logged	Logged by		FL		Location (Twp., Lot, Con. or Lat. and Long.)		
Exploration Co., Owner or Optionee		Date Submitted	Submitted by (Signature)		FL				
					FL		Property Name		

Footage		Rock Type	Description Colour, grain size, texture, minerals, alteration, etc.	Planar Feature Angle °	Core Specimen Footage †	Your Sample No.	Sample Footage		Sample Length	Assays †	
From	To						From	To		As (pph)	As (oz/c)
			51.0 - 51.3. <i>Stromeyer corol. flints of chalcocite at contact with above section - contact in the cherty zone - contact at 35° to C.A.</i>								
			68.0 - 68.1. <i>Core becomes siliceous, very fine grained, dark greenish grey - may be a chert.</i>			0094	67	69	2.0		25
						0095	69	72	3.0		17
						0096	72	77	5.0		10
69.1	117.6	Galena	<i>fine to medium grained, dark greenish-grey color, massive to moderately foliated at 45° to 50° to C.A. greenish slightly chloritized.</i>			0097	107	112	5.0		19
			107 - 117.6. <i>Local section appears to be finer grained core becomes slightly strongly magnetic locally.</i>			0098	112	117.6	5.6		140
			<i>- Pyrite and pyrrhotite occur as minor disseminations &lt; 1%. - Chalcocite occurs occasionally as segregation in both pyrite and pyrrhotite.</i>								
			114.6 - 115.0. <i>gray-white quartz vein with chlorite - barren of chalcocite.</i>								
117.6	207.2	Mafic to intermediate hypocrystic	<i>dark grey to black characterized by irregular layers of highly material alternating with dark matrix. Irregular layering random distribution locally weak to strong magnetic. - Small flake of slightly chloritized biotite occur throughout the section. - locally the light layers appear fragmented with pebble sized fragments. - local section sectors of more massive rock.</i>			0099	117.6	122	4.4		37
						0100	122	127	5.0		25
						0101	127	132	5.0		92
						0102	132	137	5.0		710,000 70.41





**Diamond Drilling Log**

Complete this form and related sketch in duplicate.

Fill in on every page

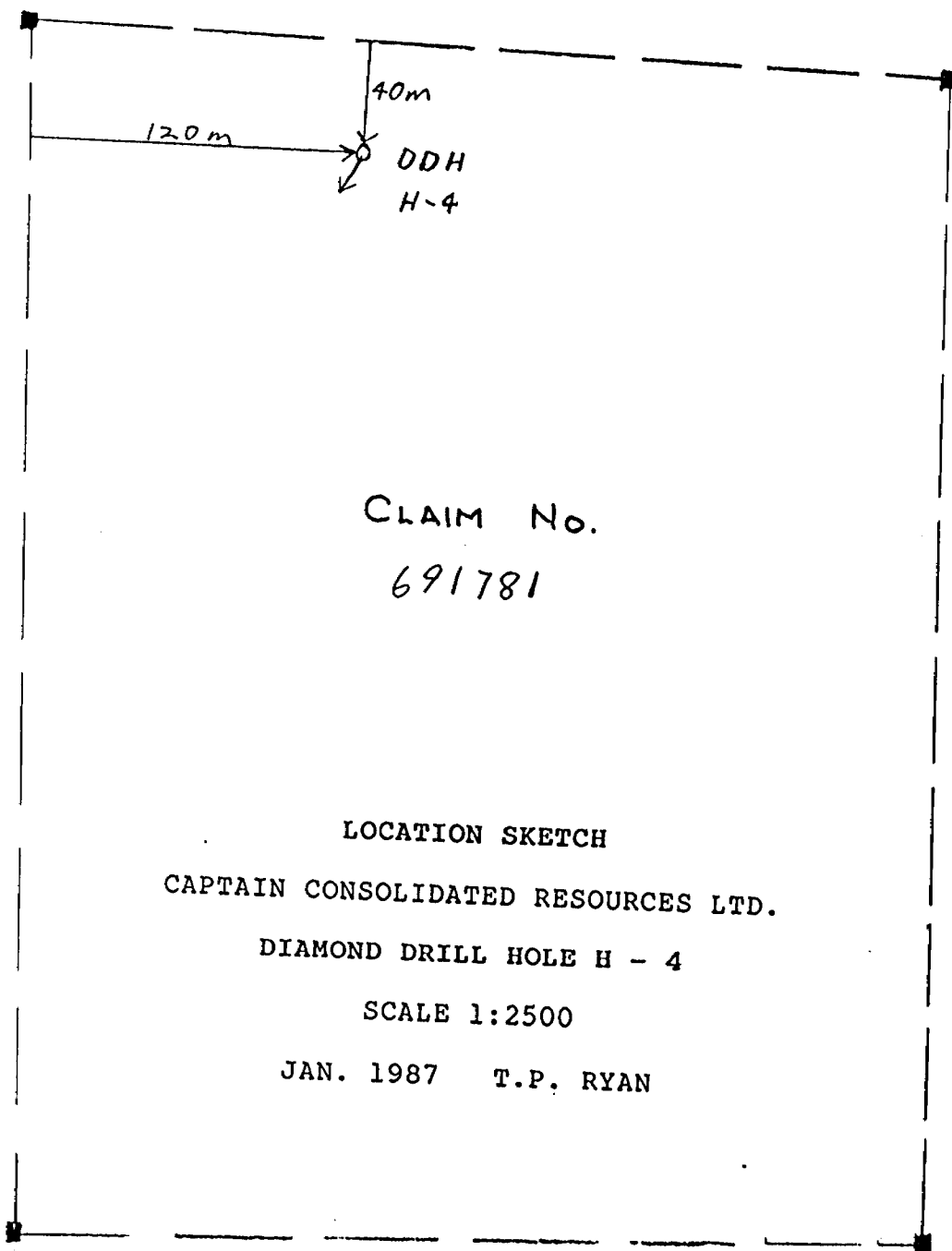
Hole No. **H-4** Page No. **4**

Drilling Company		Collar Elevation	Bearing of hole from true North	Total Footage	Dip of Hole at Collar	Address/Location where core stored	Map Reference No.	Claim No.
Date Hole Started	Date Completed	Date Logged	Logged by		Fl.			
Exploration Co., Owner or Optionee		Date Submitted	Submitted by (Signature)		Fl.			
					Fl.			
							Location (Twp., Lot, Con. or Lat. and Long.)	
							Property Name	

Footage		Rock Type	Description Colour, grain size, texture, minerals, alteration, etc.	Planar Feature Angle *	Core Specimen Footage †	Your Sample No.	Sample Footage		Sample Length	Assays ‡ Au (ppb)
From	To						From	To		
216.3	226.3	Mica schist	<p>Conducted zone: probably a mafic lith. very fine grained granoblastic consisting of biotite, K-feldspar, perovskite, muscovite and quartz.</p> <ul style="list-style-type: none"> <li>- somewhat laminated weak banding</li> <li>- locally to moderately chloritized</li> </ul> <p>Serpentine - dominated by pyrochlore occurring as fine dissemination and trails or massive thin plates that are never wider than 1"</p> <p>Pyrochlore &gt; quartz, with occasional peak of chlorophane.</p> <ul style="list-style-type: none"> <li>- Serpentine up to 15% of section</li> <li>- Pyrochlore placed K-feldspar to Ni powder test</li> <li>- Pyrochlore determined at 60° to C.A.</li> <li>- Only the massive pyrochlore occurs in the structure is conductive, the rock is not conductive.</li> <li>- There are ~ 35 pyrochlore structures in this section</li> </ul>			0107	216.3	221.3	5.0	16
						0108	221.3	226.3	5.0	19
226.3	237.6	Koepfite	<p>Dark green to black; very fine grained, magnetically chloritized.</p> <ul style="list-style-type: none"> <li>- Strongly magnetic locally.</li> <li>- weakly chloritized pyrochlore &lt; 2% locally up to 3%</li> <li>- 232.6 - 233.4 - increase in pyrochlore or biotite ~ 15% to 20% of section</li> <li>- 233.4 - 237.6 - biotite and magnetite locally or calc. locally.</li> </ul>			0109	226.3	232.6	6.3	6
						0110	232.6	237.6	5.0	9







CLAIM No.  
691781

LOCATION SKETCH  
CAPTAIN CONSOLIDATED RESOURCES LTD.  
DIAMOND DRILL HOLE H - 4  
SCALE 1:2500  
JAN. 1987 T.P. RYAN



Diamond Drilling Log

Complete this form and related sketch in duplicate.

Fill in on every page

Hole No. H-7 Page No. 1

Drilling Company		Collar Elevation	Bearing of hole from true North S 50° W	Total Footage 251'	Dip of Hole at Collar 45°	Address/Location where core stored Camp	Map Reference No.	Claim No. 708439
Date Hole Started December 3, 1985	Date Completed December 4, 1986	Date Logged Dec 5/6, 1986	Logged by TERRANCE P. Ryan	Ft.	Ft.		Location (Twp., Lot, Con. or Lat. and Long.) 708439	Property Name Maine Consolidated Resources Ltd.
Exploration Co., Owner or Optionee Maine Consolidated Resources Ltd.		Date Submitted	Submitted by (Signature)	Ft.	Ft.			
				Ft.	Ft.			

Footage From	Footage To	Rock Type	Description Colour, grain size, texture, minerals, alteration, etc.	Planar Feature Angle *	Core Specimen Footage †	Your Sample No.	Sample Footage		Sample Length	Assays †	
							From	To			
0	10	Overburden				0255	10	17	7		16
10	22.6	Medium to Intermediate Tuff	- dark grey, fine to medium grained, strongly foliated at 50° to C.A. - light grey beds alternate with dark grey to black fine grained chloritic beds			0256	17	22.6	5.6		25
						0257	22.6	26.3	3.7		23
						0258	26.3	32	5.7		5
						0259	32	36.4	4.4		45
22.6	26.3	Medium to coarse grained Tuff	- chloritic beds increase from 19.3 to end of section - pink quartz occurs locally in tuff - brecciated and poorly phyllophitic chloritic matrix - trace sulphides								
26.3	36.4	Medium to coarse grained Tuff	- dominant to very coarse mixed with coarse tuff - 60% quartz, 40% tuff - tuff, fine grained, black, foliated and micaceous - chloritic - trace quartz								
36.4	39.1	Medium to coarse grained Tuff	- fine grained, light grey, dominated by fine grained quartz and chlorite - moderately foliated and tapered at 90° to C.A. - brecciated zone replaced near end of section 26.3 - 27.2 brecciated & quartz 27.2 - 36.4 quartz & chlorite								
39.1		Medium to coarse grained Tuff	- medium to dark grey, fine grained, micaceous chloritic groundmass with coarse and local clay more tabular matrix - foliation and bedding at 70° to C.A.								

\* For features such as foliation, bedding, schistosity, measured from the long axis of the core.

† Additional credit available. See Assessment Work Regulations.



**Diamond  
Drilling  
Log**

Complete this form and  
related sketch in duplicate.

Fill in on  
every page

Hole No. **11-7** Page No. **2**

Drilling Company		Collar Elevation	Bearing of hole from true North	Total Footage	Dip of Hole at Collar	Address/Location where core stored	Map Reference No.	Claim No.	
Date Hole Started	Date Completed	Date Logged	Logged by		FL		Location (Twp., Lot, Con. or Lat. and Long.)		
Exploration Co., Owner or Optionee		Date Submitted	Submitted by (Signature)		FL				
					FL		Property Name		

Footage		Rock Type	Description Colour, grain size, texture, minerals, alteration, etc.	Planar Feature Angle *	Core Specimen Footage †	Your Sample No.	Sample Footage		Sample Length	Assays †	
From	To						From	To			
39.1	56.75	Tuff	<p>Similar to section 10-22.6 - coarse to medium grained and thin bedded - light grey massive alteration with dark grey to black matrix consisting of chlorite and sericite - locally some phlogopite - possible small fragments of quartz locally - thin veins of calcite throughout the section on vertical cleavage and horizontal into bands</p> <p>54.5-55 - quartz vein with chlorite</p>			0260	42	47	5	Ag	65
						0261	47	52	5		65
						0262	52	57	5		65
56.75	60.0	Mafic Tuff	<p>Similar to section 36.9-38.1, matrix fine to medium grained. Fine grained groundmass with remnants of light grey quartz rich material. Quite disseminated <math>\approx 1\%</math></p>			0263	57	62	5		75
60.0	61.1	Metasediment	Similar to section 26.3-36.9								
61.1	67.6	Mafic Tuff	<p>Similar to section 56.75-60.0</p> <p>61.1-62.9 - quartz crystals 62.9-67.6 - calcite &amp; chlorite Tuff - coarse bedded chlorite matrix alteration with light grey matrix - alteration contactal zone end of section</p>			0264	62	67.6	5.6		8



Complete this form and related sketch in duplicate.

Fill in on every page

Hole No. 14-7  
Page No. 3

Drilling Company		Collar Elevation	Bearing of hole from true North	Total Footage	Dip of Hole at Collar	Address/Location where core stored	Map Reference No.	Claim No.
Date Hole Started	Date Completed	Date Logged	Logged by		FL		Location (Twp., Lot, Con. or Lat. and Long.)	Property Name
Exploration Co., Owner or Optionee		Date Submitted	Submitted by (Signature)		FL			
					FL			

Footage		Rock Type	Description Colour, grain size, texture, minerals, alteration, etc.	Planar Feature Angle *	Core Specimen Footage †	Your Sample No.	Sample Footage		Sample Length	Assays †	
From	To						From	To			
67.6	87.6	Iron formation	massive bedded oxide and sulphide facies IF - characterized by grey cherty beds alternating with massive magnetite laminae, chlorite, hematite bands			0265	67.6	72	4.4	As. pp 6	11
						0266	72	77.7	5.7		25
						0267	77.7	82	4.3		25
						0268	82	87.6	2.6		25
			67.6-69.8 - minor ferrite alteration and small Fe mineralization, section characterized by abundant yellow quartz grains and pale green material								
			69.8-70.5 grey quartz vein with black & pinkish-brown garnet crystals								
			70.5-76.6 - dominated by light to medium grey cherty beds alternating with magnetite, hematite and possibly quartz beds - 5% Fe								
			76.6-77.7 Iron vein with massive chlorite stringer and hematite								
			77.7-81.0 - magnetite, hematite IF mixed with strongly chloritized material								
			81.0-87.6 - sulphide - hematite facies iron mineralization and possibly hematite - 25% Fe - cherty beds with quartz - hematite								
87.6	110.0	Garnet Magnetite	characterized by pink quartz and hematite crystals and hematite on hematite grains - hematite then 50% of section - hematite and quartz contain quartz - hematite			0269	87.6	87	2.4		25
						0270	87	92	5		25
						0271	92	97	5		16

\* For features such as foliation, bedding, schistosity, measured from the long axis of the core.

† Additional credit available. See Assessment Work Regulations.



Complete this form and  
related sketch in duplicate.

Fill in on  
every page

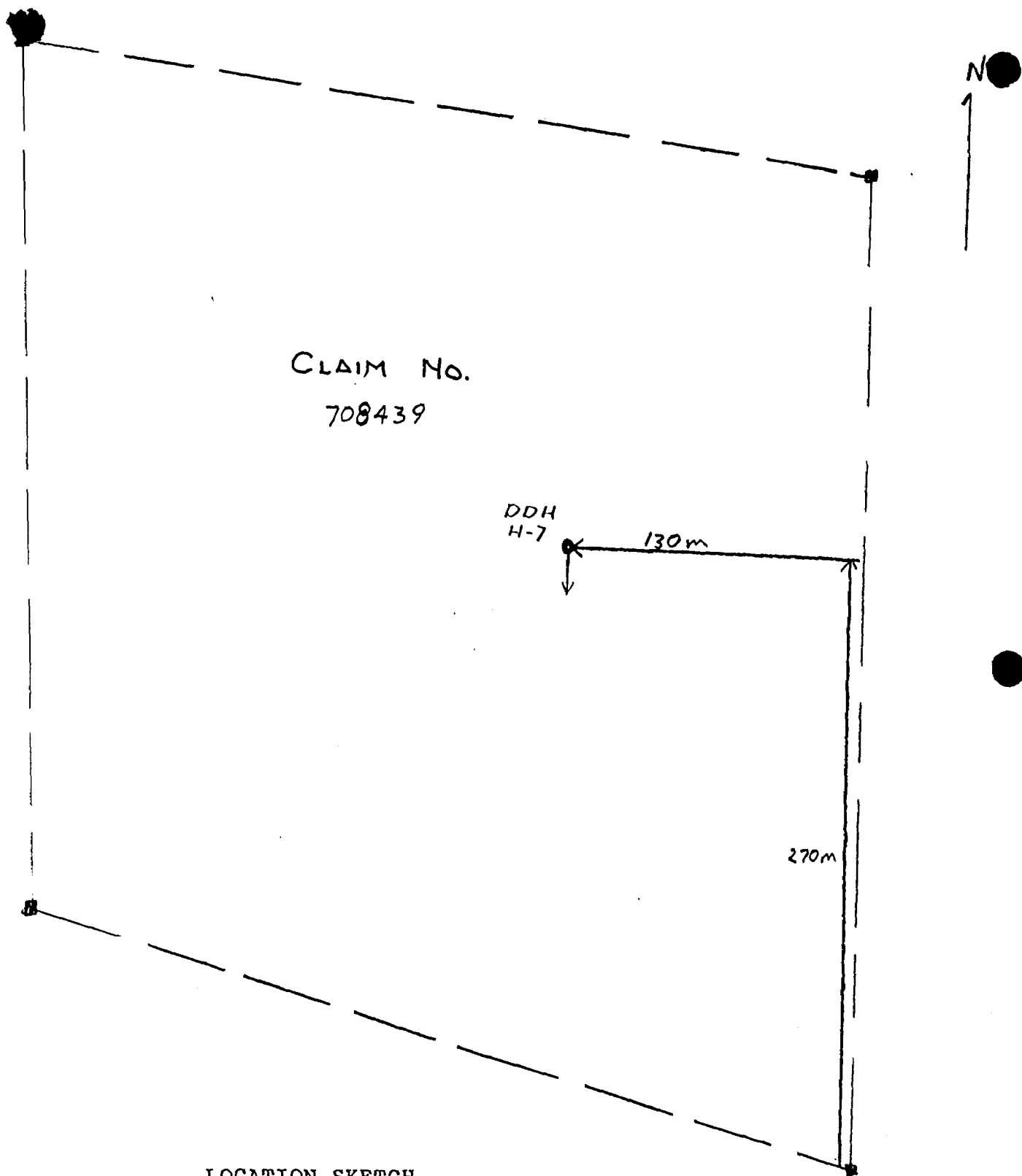
Hole No. **4-7** Page No. **4**

Drilling Company		Collar Elevation	Bearing of hole from true North	Total Footage	Dip of Hole at Collar	Address/Location where core stored	Map Reference No.	Claim No.	
Date Hole Started	Date Completed	Date Logged	Logged by	FL	FL		Location (Twp., Lot, Con. or Lat. and Long.)		
Exploration Co., Owner or Optionee		Date Submitted	Submitted by (Signature)	FL			FL	Property Name	
				FL					

Footage		Rock Type	Description Colour, grain size, texture, minerals, alteration, etc.	Planar Feature Angle *	Core Specimen Footage †	Your Sample No.	Sample Footage		Sample Length	Assays †	
From	To						From	To			
84.6	110	Conc. L.	Lenses and laminae and laminae of quartzite - - Flattest crystalline texture. Small dark lens - <u>Chlorite</u> foliation end of Section - foliation at 75° to 90° to CA - trace sulphide  NOTE - Box 5 core from footages 84.2 to 112.4 was changed at old site.								
110	210.9	Metasediment	Shaly matrix of laminated and bedded sand grains about size to green (chlorite) layers with light grey quartz cementation  - <u>Chlorite</u> foliation - <u>Chlorite</u> foliation parallel to foliation at 65° to 75° to CA - Local section upper to lower - <u>Chlorite</u> foliation 112.6 - 112.9 - <u>Chlorite</u> from laminae along cleavage of <u>Chlorite</u> formation 210.9 - <u>Chlorite</u> contact at 90° to CA			0272	117	122	5		21
						0273	177	182	5		25
						0274	177	182	5		25
						0275	202	207	5		25
210.9	231.3	Conc. White - Section	Section to section 84.6 - 110			0276	217	222	5		25
231.3	251	Metasediment	Section to 110-210.9 - with some sand matrix. <u>Chlorite</u> - <u>Chlorite</u> and <u>Chlorite</u> - <u>Chlorite</u> section <u>Chlorite</u> more pronounced than section 110-210.9 with local <u>Chlorite</u> and <u>Chlorite</u> fragments.  - <u>Chlorite</u> foliation at 90° to CA			0277					
						0278	237	242	5		25
						0279	242	247	5		25

\* For features such as foliation, bedding, schistosity, measured from the long axis of the core.

† Additional credit available. See Assessment Work Regulations.



CLAIM NO.  
708439

DDH  
H-7

130m

270m

LOCATION SKETCH

CAPTAIN CONSOLIDATED RESOURCES LTD.

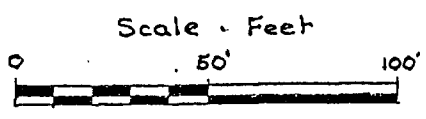
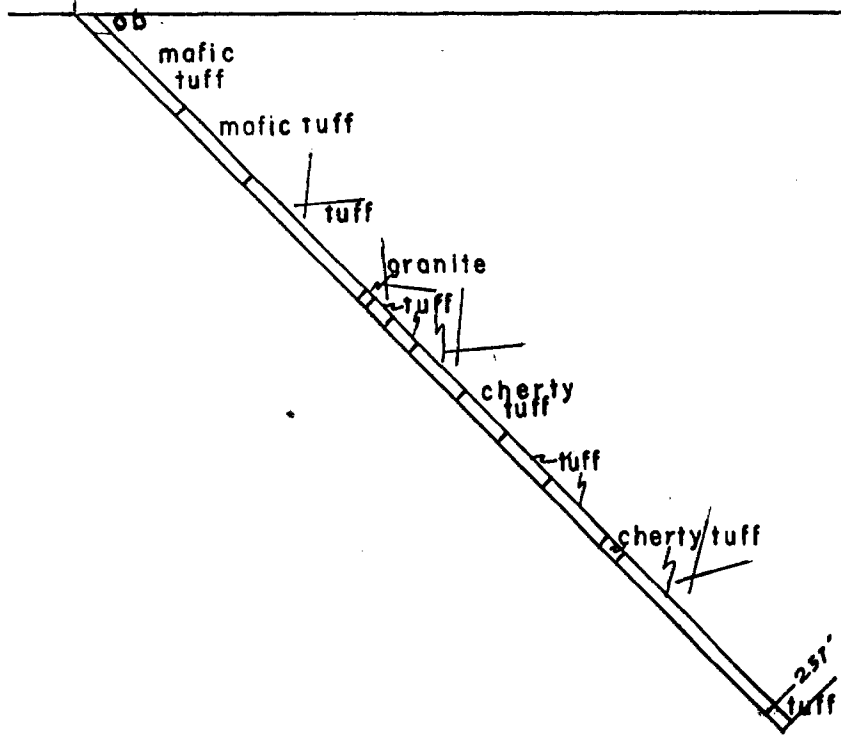
DIAMOND DRILL HOLE H - 7

SCALE 1:2500

JAN. 1987 T.P. RYAN

DDH - H - 1  
DIP - 45°

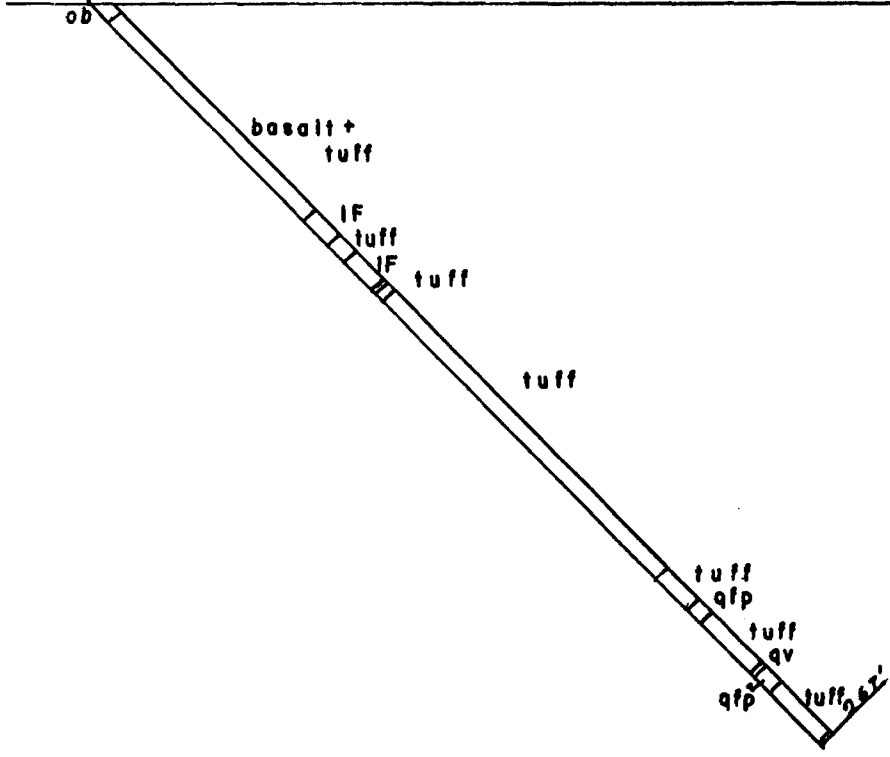
S 30° E



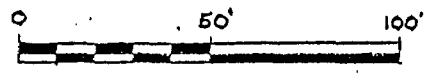
date Dec 26	CAPTAIN CONSOLIDATED	scale 1" = 40'
<i>[Signature]</i>	PROFILE DDH - H - 1	

DDH - H - 2  
 DIP - 45  
 DEPTH - 267'

S40°W



Scale - Feet

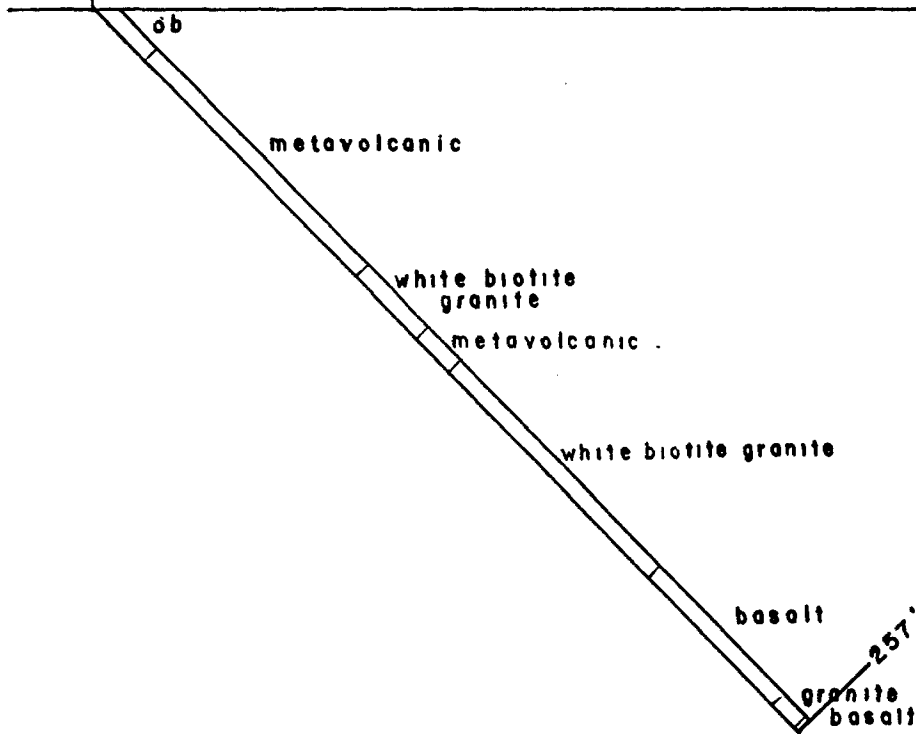


date DEC/84	CAPTAIN CONSOLIDATED	scale 1/2" = 40'
<i>[Signature]</i>	PROFILE DDH - H - 2	

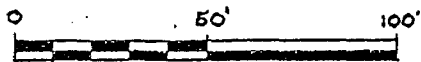


DDH-H-3  
DIP -45  
DEPTH 257'

S30°W



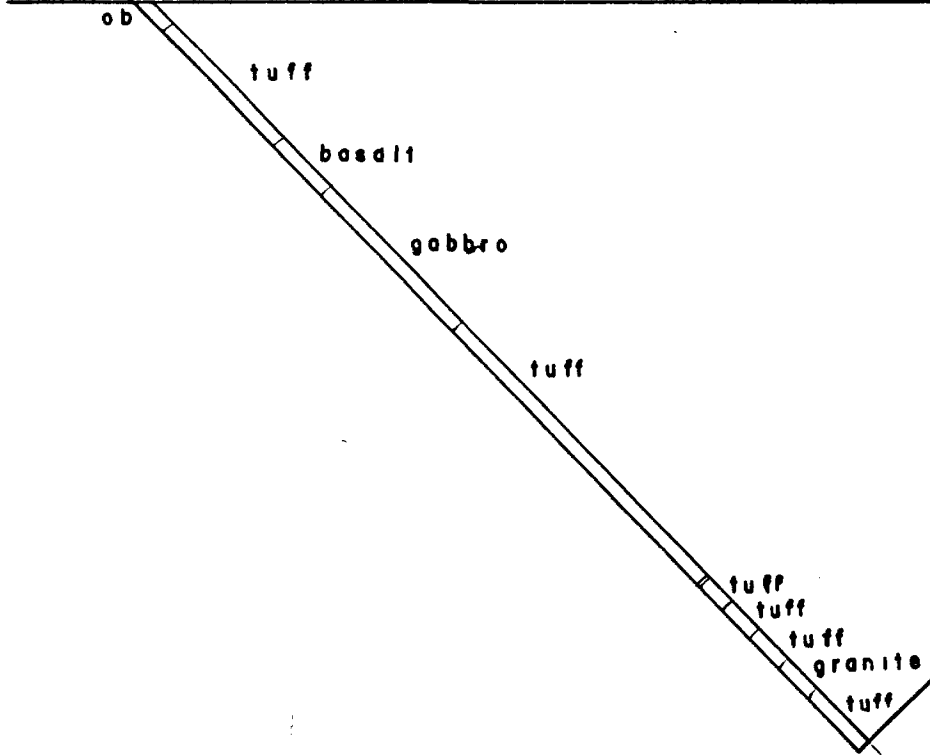
Scale - Feet



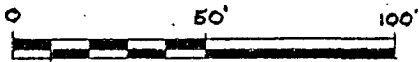
date Dec '80	CAPTAIN CONSOLIDATED	scale 1" = 40'
<i>[Signature]</i>	PROFILE DDH-H-3	

DDH-H-4  
DIP - 45  
DEPTH - 267'

S 23° W

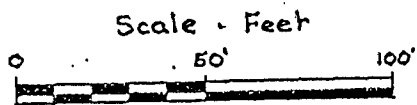
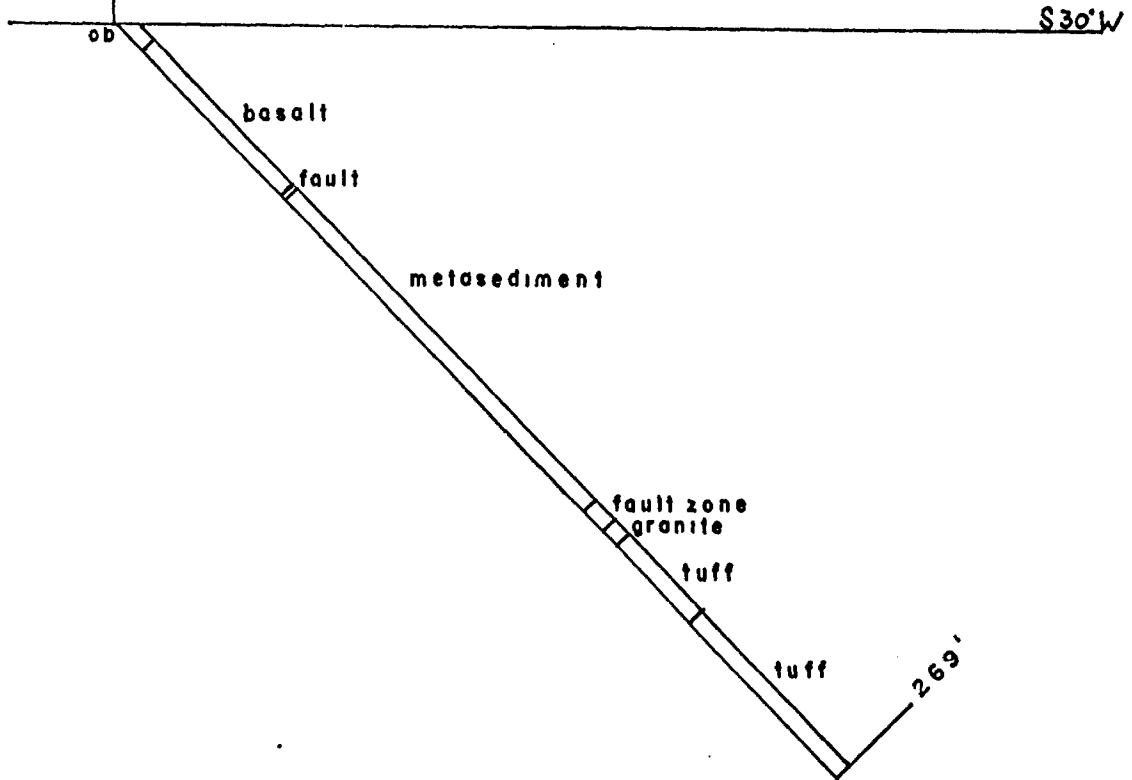


Scale - Feet



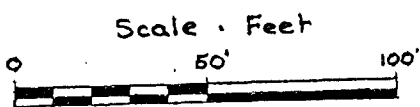
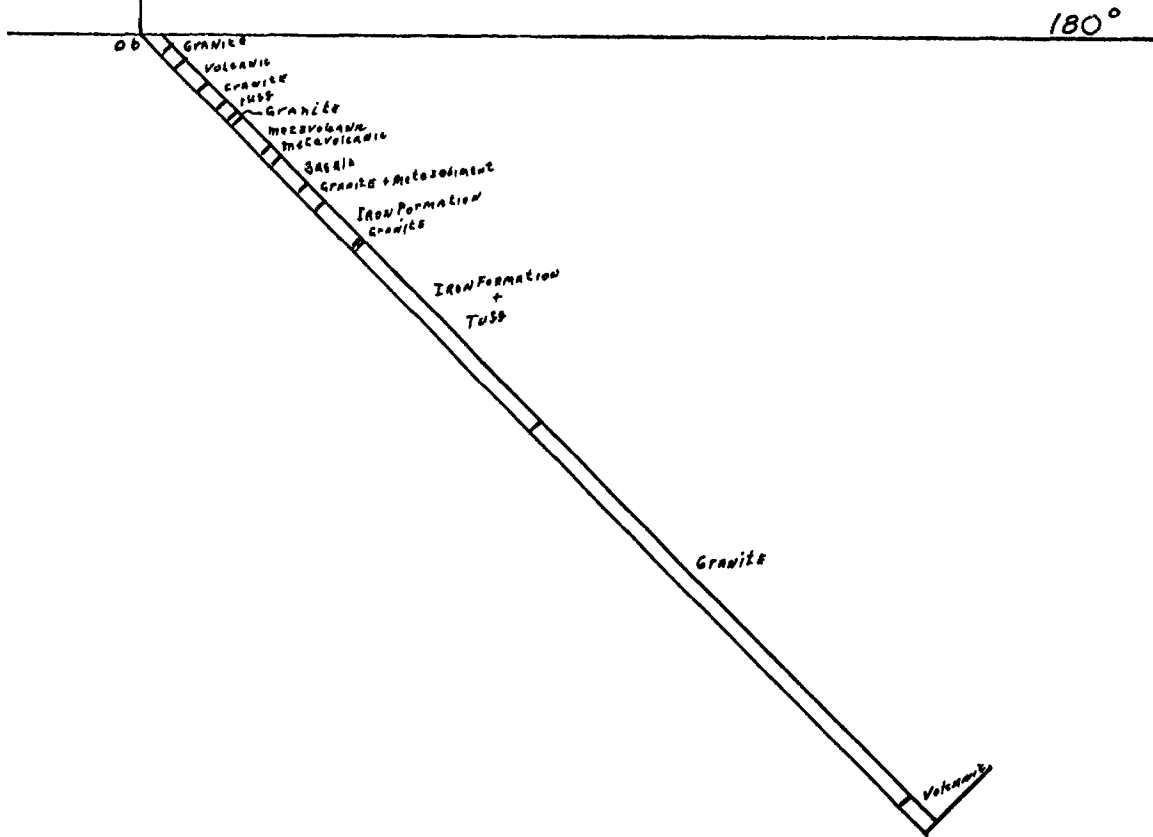
date Dec '66	CAPTAIN CONSOLIDATED	scale 1/50'
<i>[Signature]</i>	PROFILE DDH-H-4	

DDH-H-5  
DIP - 45  
DEPTH - 269'



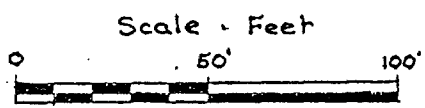
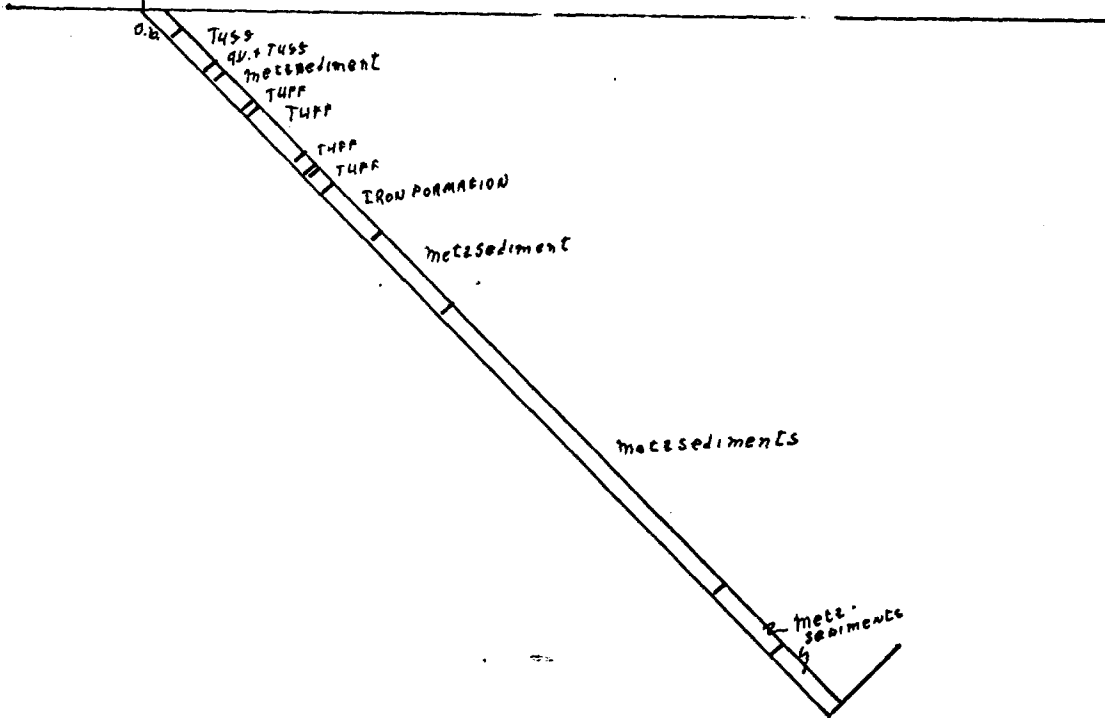
date Dec/86	CAPTAIN CONSOLIDATED	scale 1"=40'
<i>[Signature]</i>	PROFILE DDH-H-5	

DDH - H - 6  
 DIP - 45  
 DEPTH - 285'



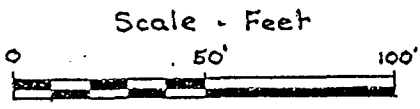
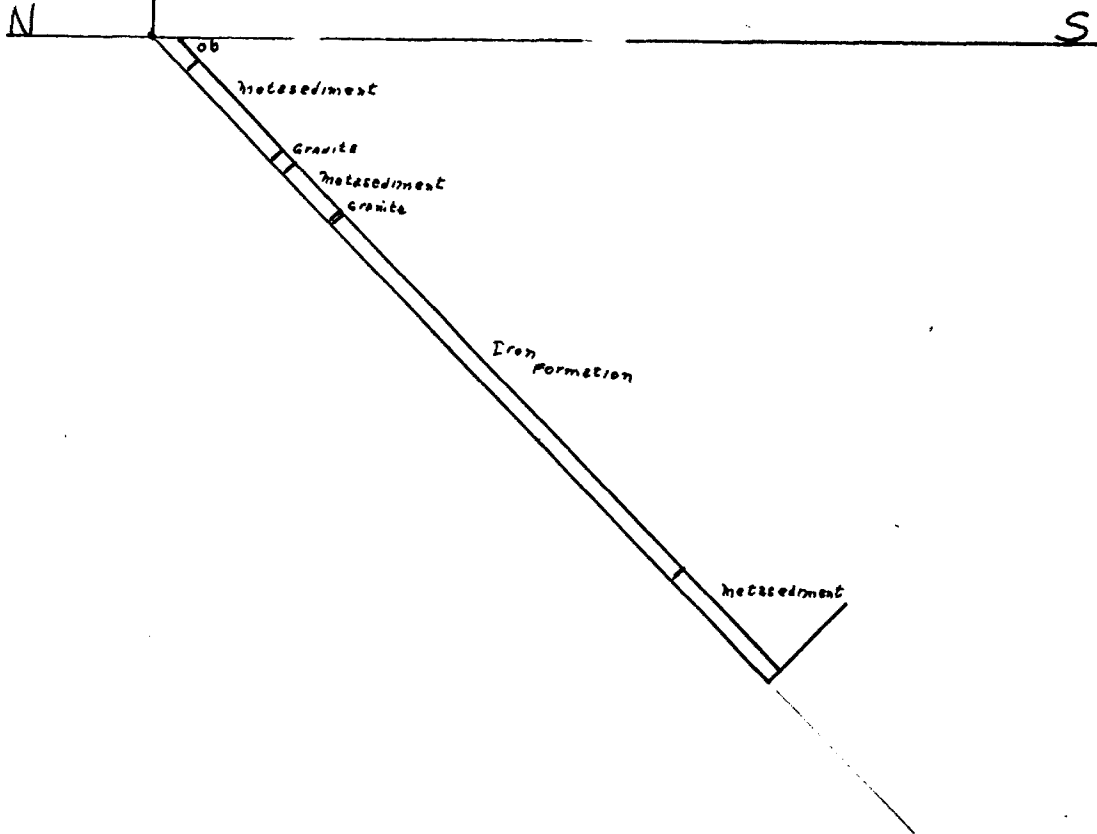
date	CAPTAIN	scale
Dec/81	CONSOLIDATED	1" = 50'
<i>[Signature]</i>	PROFILE DDH - H - 6	

DDH - H-7  
 DIP - 45°  
 DEPTH - 251'



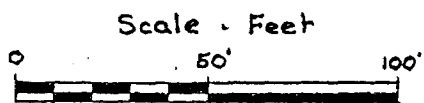
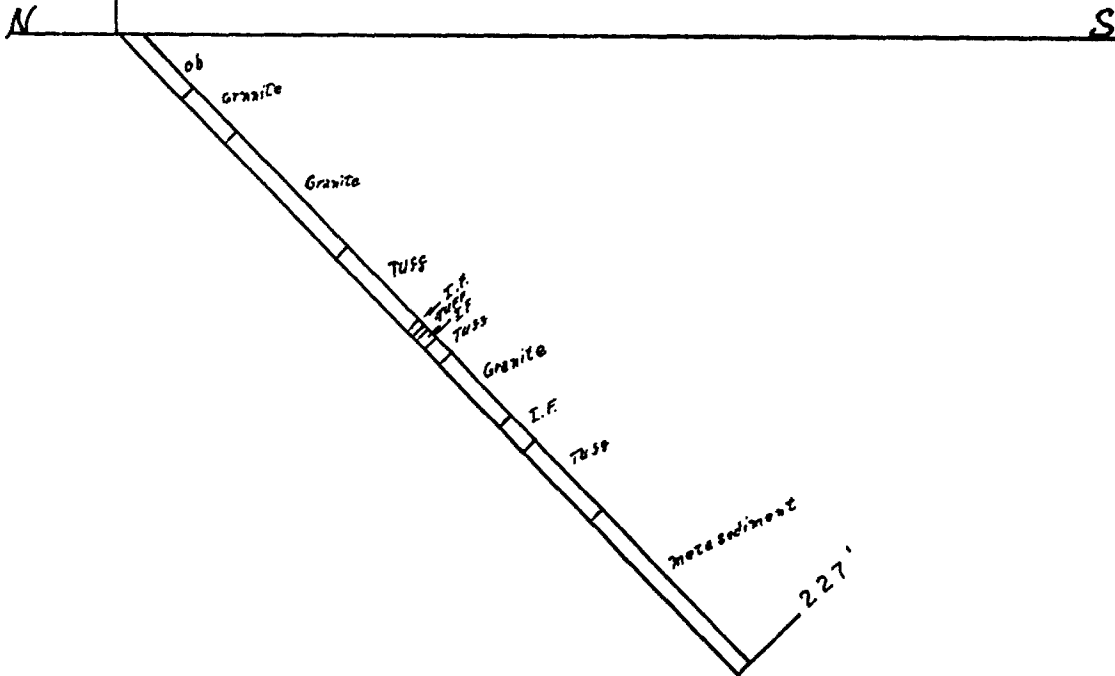
date Dec/66	CAPTAIN CONSOLIDATED	scale 1" = 40'
<i>[Signature]</i>	PROFILE DDH - H-7	

DDH-H-8  
 DIP-45°  
 DEPTH-227'



date DEC/86	CAPTAIN CONSOLIDATED	scale 1"=40'
<i>[Signature]</i>	PROFILE DDH-H-8	

DDH-H-9  
 DIP - 45°  
 DEPTH - 227



date Dec 1/80	CAPTAIN CONSOLIDATED	scale 1"=40'
<i>[Signature]</i>	PROFILE DDH-H-9	

FENTON SCOTT MANAGEMENT  
17 Malabar Place  
Don Mills, Ontario  
M3B 1A4

August 20, 1987

Captain Consolidated Resources Ltd.  
Suite 400  
250 Dundas Street West  
Toronto, ontario  
M5T 2Z5

Gentlemen:

This letter is an attempt to describe and offer possible explanations of the analytical discrepancies on drill core from your Mishubishi Lake District Gold Prospect in Ontario.

In November and December, 1986, nine diamond drill holes were put down on the property to test geophysical indications at locations where overlying soils or adjacent bedrock showed higher than normal gold content.

A total of 334 samples were sent to Assayers (Ontario) Limited in Toronto. These split drill cores were analysed for gold content prior to January 8, 1987. Three of these samples, numbered 102, 140, and 184 were reported to show significant values.

Prior to reporting the gold assays, the laboratory re-assayed the pulps from samples 102 and 184 and obtained corroborative results. This re-assay selection included umpire assays for other customers, and one sample for Fenton Scott Management. This sample for Fenton Scott Management has been checked at another laboratory with comparable results, although numbering procedure is not clear.

As part of a property examination circa March 1987, a mining company assayed parts of the remaining split cores from the property. They reported only background gold values.

Continued.....



On receipt of this information, Captain Consolidated Resources Ltd. ordered that the relevant pulps and rejects from this core samples be re-assayed at Assayers (Ontario) Limited. In addition a number of samples were sent to D'or Val Mines Limited and Bourlamaque Assay Office for analysis. In total, 211 of the 334 samples were tested again, including all significant numbers.

All of the re-assays showed only background gold values.

In May, 1987, an extensive discussion of analytical procedures took place with personnel of Assayers (Ontario) Limited. No obvious discrepancies or errors were noted, and all standard procedures appeared to have been followed.

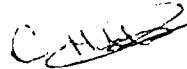
There are several possible explanations for the reported high values:

1. Instrumentation Failure.
2. Inadvertent "Salting" in the Laboratory.  
(The fact that check samples also ran make the above explanations unlikely).
3. Inadvertent "misnumbering" of samples at Laboratory.
4. Nugget effect where gold occurred in discrete particles in two sample runs only.

None of these explanations appears satisfactory. The fact that surface sampling showed anomalous gold values in the vicinity of the diamond drill holes makes resolution of the mystery more important.

Cordially yours,

**FENTON SCOTT MANAGEMENT**



Fenton Scott,  
(Per C. Hutchison)



**ASSAYERS (ONTARIO) LIMITED**

33 CHAUNCEY AVENUE TORONTO, ONTARIO M8Z 2Z2 · TELEPHONE (416) 239-3527

*DORVAL MINES*

*70 SAMPLES*

*1 TO DORVAL*

*1 TO ASSAYERS*

*GET REJECTS FOR EXAMINATION*

**Certificate of Analysis**

Certificate No. FS-79/01/5775

Date: January 8, 1987

Received \_\_\_\_\_ 334 Samples of Drill Core

Submitted by Fenton Scott Management Inc. Att'n: Mr. E. Scott

Sample No.	Au ppb	Sample No.	Au ppb	Sample No.	Au ppb
0001	51	0021	<5	0041	58
0002	30	0022	<5	0042	27
0003	<5	0023	<5	0043	205
0004	<5	0024	<5	0044	318
0005	<5	0025	10	✓0045✓	256
0006	<5	0026	<5	✓0046✓	294
0007	<5	0027	<5	✓0047✓	41
0008	<5	0028	<5	0048	<5
0009	<5	0029	<5	0049	23
0010	123	✓0030✓	<5	0050	<5
0011	37	✓0031✓	<5	0051	<5
0012	<5	✓0032✓	175	0052	<5
0013	<5	0033	<5	0053	<5
0014	36	0034	<5	0054	<5
0015	<5	0035	<5	0055	<5
0016	<5	0036	<5	0056	<5
0017	<5	0037	68	0057	<5
0018	<5	0038	123	0058	<5
0019	<5	0039	17	0059	<5
0020	<5	0040	13	0060	<5

*FENTON:  
FS 79 REJECTS IN  
SHED. G.*

ASSAYERS (ONTARIO) LIMITED

Per \_\_\_\_\_  
*J. van Engelen* Mgr.



# ASSAYERS (ONTARIO) LIMITED

33 CHAUNCEY AVENUE TORONTO, ONTARIO M8Z 2Z2 · TELEPHONE (416) 239-3527

## Certificate of Analysis

Certificate No. ES-79/02/5775

Date: January 8, 1987

Received \_\_\_\_\_ 334 Samples of Drill Core

Submitted by Fenton Scott Management Inc. Att'n: Mr. F. Scott

Sample No.	Au ppb	Sample No.	Au ppb	Sample No.	Au ppb oz/to
0061	<5	0082	<5	0102 ✓	>10000 .41
0062	<5	0083	3	0103 ✓	33
0063	<5	0084	<5	0104 ✓	20
0064	<5	0085	<5	0105 ✓	10
0065	<5	0086	<5	0106 ✓	12
0066	<5	0087	<5	0107 ✓	16
0067	<5	0088	<5	0108 ✓	19
0068	<5	0089	<5	0109	6
0069	<5	0090	<5	0110	9
0070	<5	0091	<5	0111	<5
0071	<5	0092	<5	0112	<5
0072	82	0093	<5	0113	<5
0073	<5	0094	<5	0114	6
0074	<5	0095	17	0115	<5
0075	<5	0096	10	0116	19
0076	<5	✓0097 ✓	19	0117	24
0077	<5	✓0098 ✓	140	0118	<5
0078	<5	✓0099 ✓	37	0119 ✓	5
0079	<5	✓0100 ✓	<5	0120 ✓	9
0080	7	✓0101 ✓	92	0121 ✓	85
0081	No Sample				

ASSAYERS (ONTARIO) LIMITED

Per \_\_\_\_\_

J. van Engelen (Mgr.)



# ASSAYERS (ONTARIO) LIMITED

33 CHAUNCEY AVENUE TORONTO, ONTARIO M8Z 2Z2 · TELEPHONE (416) 239-3527

## Certificate of Analysis

Certificate No. FS-79/03/5775

Date: January 8, 1987

Received 334 Samples of Drill Core

Submitted by Fenton Scott Management Inc. Att'n: Mr. E. Scott

Sample No.	Au ppb	oz/ton	Sample No.	Au ppb	Sample No.	Au ppb
0122 ✓	91		0142	15	0162	5
0123 ✓	85		0143	10	0163	<5
0124 ✓	75		0144	11	0164	<5
0125	121		0145	21	0165	<5
0126	6		0146	12	0166	<5
0127	16		0147	10	0167	<5
0128	11		0148	25	0168	72
0129	<5		0149	12	0169	69
0130	<5		0150	<5	0170	58
0131	<5		0151	<5	0171	No Sample
0132	<5		0152	6	0172	16
0133	<5		0153	12	0173	<5
0134	19		0154	<5	0174	20
0135	<5		0155	<5	0175	31
0136	<5		0156	<5	0176	<5
0137	<5		0157	<5	0177	<5
0138 ✓	<5		0158	<5	0178 ✓	21
0139 ✓	<5		0159	<5	0179 ✓	82
0140 ✓	1217	.042	0160	<5	0180 ✓	<5
0141 ✓	16		0161	6	0181	31

ASSAYERS (ONTARIO) LIMITED

Per J. Van Engelen

J. Van Engelen Mgr.



# ASSAYERS (ONTARIO) LIMITED

33 CHAUNCEY AVENUE TORONTO, ONTARIO M8Z 2Z2 · TELEPHONE (416) 239-3527

## Certificate of Analysis

Certificate No. FS-79/04/5775 Date: January 8, 1987

Received 334 Samples of Drill Core

Submitted by Eaton Scott Management Inc. Att'n: Mr. D. McPhee

Sample No.	Au ppb	oz/ton	Sample No.	Au ppb	Sample No.	Au ppb
✓ 0182 ✓	38		0202	35	0222	<5
✓ 0183 ✓	31		0203	22	0223	<5
✓ 0184 ✓	3840	.11	0204	26	0224	<5
✓ 0185 ✓	38		0205	24	0225	<5
✓ 0186 ✓	12		0206	26	0226	<5
✓ 0187 ✓	12		0207	5	0227	<5
0188	10		0208	7	0228	<5
0189	20		0209	<5	0229	<5
0190	16		0210	<5	0230	<5
0191	16		0211	5	0231	<5
0192	25		0212	31	0232	<5
0193	11		0213	12	0233	<5
0194	11		0214	12	0234	<5
0195	10		0215	5	0235	<5
0196	25		0216	5	0236	<5
0197	95		0217	8	0237	<5
0198	17		0218	5	0238	12
0199	20		0219	<5	0239	33
0200	25		0220	<5	0240	<5
0201	<5		0221	<5	0241	6

ASSAYERS (ONTARIO) LIMITED

Per \_\_\_\_\_

J. van Engelen Mgr.



# ASSAYERS (ONTARIO) LIMITED

33 CHAUNCEY AVENUE TORONTO, ONTARIO M8Z 2Z2 · TELEPHONE (416) 239-3527

## Certificate of Analysis

Certificate No. FS-79/05/5775

Date: January 8, 1987

Received 337 Samples of Drill Core

Submitted by Fenton Scott Management Inc. Att'n: Mr. F. Scott

Sample No.	Au ppb	Sample No.	Au ppb	Sample No.	Au ppb
0242	9	0262	<5	0282	<5
0243	9	0263	75	0283	<5
0244	16	0264	8	0284	<5
0245	11	0265	11	0285	17
0246	12	0266	<5	0286	8
0247	6	0267	<5	0287	<5
0248	23	0268	<5	0288	<5
0249	6	0269	<5	0289	<5
0250	19	0270	<5	0290	<5
0251	23	0271	16	0291	<5
0252	10	0272	21	0292	31
0253	29	0273	<5	0293	10
0254	19	0274	<5	0294	12
0255 ✓	16	0275	<5	0295	<5
0256 ✓	25	0276	<5	0296	<5
0257 ✓	23	0277	<5	0297	10
0258	5	0278	<5	0298	8
0259	<5	0279	<5	0299	<5
0260	<5	0280	<5	0300	7
0261	<5	0281	<5	0301	8

ASSAYERS (ONTARIO) LIMITED

Per \_\_\_\_\_

J. van Eggelen Mgr.



# ASSAYERS (ONTARIO) LIMITED

33 CHAUNCEY AVENUE TORONTO, ONTARIO M8Z 2Z2 · TELEPHONE (416) 239-3527

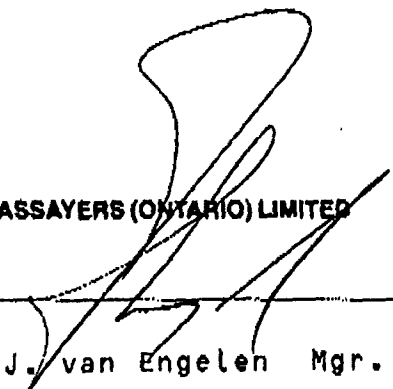
## Certificate of Analysis

Certificate No. FS-79/06/5775 Date: January 8, 1987  
Received 334 Samples of Drill Core  
Submitted by Fenton Scott Management Inc. Att'n: Mr. F. Scott

Sample No.	Au ppb	Sample No.	Au ppb
0302	5	0322	<5
0303	<5	0323	<5
0304	<5	0324	<5
0305	10	0325	<5
0306	14	0326	<5
0307	<5	0327	<5
0308	<5	0328	<5
0309	<5	0329	<5
0310	<5	0330	<5
0311	7	0331	<5
0312	<5	0332	<5
0313	7	0333	<5
0314	15	0334	<5
0315	<5		
0316	<5		
0317	<5		
0318	<5		
0319	<5		
0320	<5		
0321	<5		

ASSAYERS (ONTARIO) LIMITED

Per

  
J. van Engelen Mgr.



# ASSAYERS (ONTARIO) LIMITED

33 CHAUNCEY AVENUE TORONTO, ONTARIO M8Z 2Z2 · TELEPHONE (416) 239-3527

## Certificate of Analysis

Certificate No. FS-79/6112

Date: April 1, 1987

Received \_\_\_\_\_ 4 Samples of Pulps

Submitted by Fenton Scott Management Inc. Att'n: Mr. F. Scott

Sample No.	S %	Cu ppm
0102	0.07	70
0107	3.48	299
0140	0.55	422
0184	0.02	59

ASSAYERS (ONTARIO) LIMITED

Per \_\_\_\_\_

J. van Engelen Mgr.

ANALYTICAL CHEMISTS · ASSAYING · CONSULTING · ORE DRESSING · REPRESENTATION



# Mines d'Or Val Ltée

C.P. 1270 - Val d'Or J9P 4P8

Tél. (819) 736-4544 ext. 111

7

## LABORATOIRE D'ANALYSES PYROANALYSE

PROVENANCE: FENTON SCOTT

DATE: 21-4-87

Echantillon	Essai N°	Pesée (g)	Bille poids (mg)			Au ppm	Ag ppm	Solution volume (ml)	Au g/t	Ag g/t
			Ag + Au	Au	Ag					
79119	1	15.02				TR	10	TR		
79120	2	14.99				TR		TR		
79121	3	15.10				TR		TR		
79123	4	15.04				TR		TR		
79123	5	14.96				TR		TR		
79124	6	15.00				TR		TR		
79138	7	15.02				TR		TR		
79139	8	15.02				TR		TR		
	9									
	10									
	11									
	12									
	13									
	14									
	15									
	16									
	17									
	18									
	19									
	20									
	21									
	22									
	23									
	24									

Gravimétrique:  $g/t = \frac{\text{Bille poids (mg)} \times 1000}{\text{pesée g}}$

Volumétrique:  $g/t = \frac{\text{Solution volume (ml)} \times \text{ppm}}{\text{pesée (g)}}$

CHEF ANALYSTE: [Signature]

[Signature]

*CANTAIN  
FPP LWR*



# LABORATOIRE D'ANALYSE BOURLAMAQUE LTÉE BOURLAMAQUE ASSAY LABORATORIES LTD.

Prospecting Geophysics Limited,

CERTIFICAT D'ANALYSES  
CERTIFICATE OF ANALYSIS

No 47907

ECHANTILLONS pulps and rejects  
SAMPLES

VAL D'OR, QUÉ., April 22 19 87

RECU DE Fenton Scott  
RECEIVED FROM

ANALYSES 30 Au  
ASSAYS

3 riffle & Pulverize

Echantillon Au oz/ton

Echantillon Au oz/ton

79	0030	Trace
	0031	Trace
	0032	Trace
FS.79	0045	Trace
	0046	Trace
	0047	Trace
FS.79	0097	Trace
	0098	Trace
	0099	Trace
	0100	Trace
	0101	Trace
	0102	Trace (reject)
	0103	Trace
	0104	Trace
	0105	Trace
	0106	Trace
	0107	Trace (reject)
	0108	Trace
FS.79	178	Trace
	179	Trace
	180	Trace
	182	Trace

FS.79	183	Trace
	184	Trace (reject)
	185	Trace
	186	Trace
	187	Trace
FS.79	255	Trace
	256	Trace
	257	Trace

*[Signature]*  
ANALYSTE / ASSAYER



ANALYTICAL CHEMISTS (CANADA) LIMITED  
 270 BALDWIN AVENUE TORONTO, ONTARIO M2Z 2Z2 - TELEPHONE (416) 739-3527

### Certificate of Analysis

Certificate No. FS-029701 Date: May 27, 1987

Received 158 Samples of Recuts

Submitted by Fenton Scott Management Inc. Att'n: Mr. Fenton Scott

Sample No.	Au ppb	Sample No.	Au ppb	Sample No.	Au ppb
0022	<5	0042	<5	0062	<5
0023	<5	0043	<5	0063	<5
0024	<5	0044	<5	0064	<5
0025	5	0045	<5	0065	29
0026	<5	0046	<5	0085	<5
0027	9	0047	<5	0086	<5
0028	<5	0048	<5	0087	<5
0029	<5	0049	<5	0088	<5
0030	<5	0050	<5	0089	<5
0031	<5	0051	<5	0090	36
0032	10	0052	<5	0091	<5
0033	<5	0053	<5	0092	22
0034	<5	0054	<5	0093	<5
0035	<5	0055	<5	0103	<5
0036	<5	0056	<5	0104	<5
0037	7	0057	<5	0105	<5
0038	23	0058	<5	0106	<5
0039	<5	0059	<5	0108	<5
0040	7	0060	<5	0109	40
0041	<5	0061	<5	0110	<5

ANALYTICAL CHEMISTS (CANADA) LIMITED

Per

J. van Engelen Mgr.



ASSAYERS (ONTARIO) LIMITED

31 CHANCERY AVENUE TORONTO, ONTARIO M6Z 2Z2 - TELEPHONE (416) 239-3527

### Certificate of Analysis

Certificate No. **FS-079/Q2**

Date: **May 27, 1987**

Received **158** Samples of **Recuts**

Submitted by **Fenton Scott Management Inc.** Att'n: **Mr. Fenton Scott**

Sample No.	Au ppb	Sample No.	Au ppb	Sample No.	Au ppb
0111	<5	0193	<5	0225	<5
0112	<5	0194	12	0238	<5
0113	<5	0195	<5	0239	<5
0175	<5	0196	<5	0240	10
0176	<5	0197	<5	0241	<5
0177	<5	0198	<5	0242	<5
0178	<5	0199	<5	0243	41
0179	<5	0212	<5	0244	<5
0180	<5	0213	<5	0245	<5
0181	<5	0214	<5	0246	<5
0182	<5	0215	10	0247	5
0183	15	0216	<5	0262	<5
0185	10	0217	<5	0263	<5
0186	<5	0218	<5	0264	<5
0187	<5	0219	<5	0265	5
0188	<5	0220	<5	0266	<5
0189	<5	0221	<5	0267	<5
0190	<5	0222	5	0268	<5
0191	<5	0223	<5	0269	10
0192	<5	0224	9	0270	<5

ASSAYERS (ONTARIO) LIMITED

Per

*J. van Engelen*  
**J. van Engelen Mgr.**



ASSAYERS (ONTARIO) LIMITED

23 CHALLENGER AVENUE TORONTO, ONTARIO M8Z 2Z2 TELEPHONE (416) 239-3527

### Certificate of Analysis

Certificate No. **FS-079203** Date: **May 27, 1987**

Recovery **158** Samples of **Recuts**

Submitted by **Fenton Scott Management Inc.** Attn: **Mr. Fenton Scott**

Sample No.	Au ppb	Sample No.	Au ppb
0271	<5	0302	<5
0272	<5	0303	<5
0273	<5	0304	<5
0274	<5	0305	<5
0275	<5	0306	<5
0276	8	0307	<5
0277	<5	0308	<5
0278	<5	0309	<5
0279	10	0310	<5
0280	<5	0311	<5
0281	<5	0312	<5
0282	<5	0313	<5
0283	<5	0314	<5
0284	<5	0315	<5
0285	<5	0331	<5
0286	<5	0332	<5
0287	15	0333	<5
0288	<5	0334	<5
0289	<5		
0290	<5		

ASSAYERS (ONTARIO) LIMITED

Per

*J. van Engelen*  
J. van Engelen Mgr.

1000 AVENUE TORONTO, ONTARIO M4Z 2Z2 TELEPHONE (416) 239-3527

### Certificate of Analysis

Certificate No. **FS-79** Date: **May 27, 1987**

Quantity **10** Pulps (from storage)

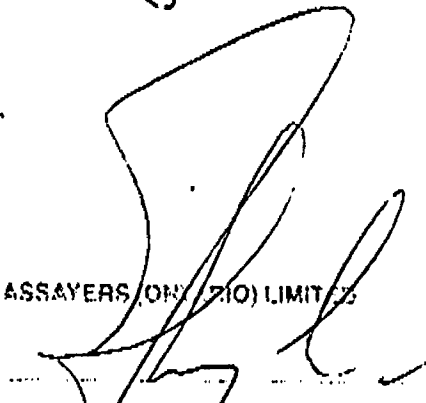
Submitted by **Fenton Scott Management Inc.** Att'n: **Mr. F. Scott**

#### REASSAY

Sample No.	Au ppb
0097	<5
0098	<5
0099	<5
0100	<5
0101	<5
0107(recut)	<5
0184(recut)	<5
0255	<5
0256	<5
0257	<5

ASSAYERS (ONTARIO) LIMITED

Per



J. van Engelen Mgr.



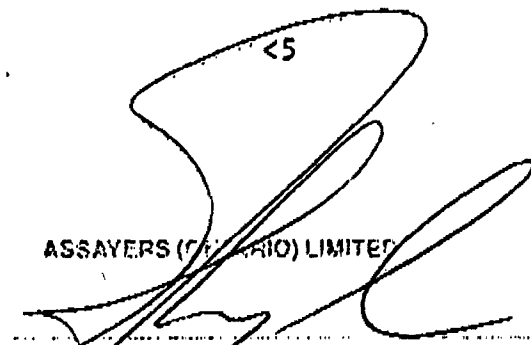
**ASSAYERS (ONTARIO) LIMITED**

150 BAYVIEW AVENUE TORONTO, ONTARIO M2Z 0Z9 - TELEPHONE (416) 239-3527

**Certificate of Analysis**

Certificate No. **FS-79** Date **May 27, 1987**  
 Received **13** Samples of **Pulps**  
 Submitted by **Fenton Scott Management Inc.** Att'n: **Mr. Fenton Scott**

Sample No.	1ST REASSAY	2ND RESSAY
	Au ppb	Au ppb
0102 -	<5	<5
0107 -	<5	16
0119 -	<5	14
0120 -	<5	12
0121 -	<5	<5
0122 -	<5	<5
0123 -	<5	<5
0124 -	<5	<5
0138	<5	<5
0139	23	13
0140	71	12
0141	<5	12
0184	<5	<5

Per   
**J. Van Engelen Mgr.**

APPENDIX II





42C04NE0025 63.4860 PUKASKWA RIVER

900

#63.4860

OM 86-7-P-260

THIS SUBMITTAL CONSISTED OF VARIOUS REPORTS, SOME OF WHICH HAVE BEEN CULLED FROM THIS FILE. THE CULLED MATERIAL HAD BEEN PREVIOUSLY SUBMITTED UNDER THE FOLLOWING RECORD SERIES (THE DOCUMENTS CAN BE VIEWED IN THESE SERIES):

① Exploration Report for Captain Consolidated → Toronto file: #2.9668, Reports of Resources Ltd. + Koala Resources Ltd. in the work #146 and #147 for 1987. Mishibishi - Pukaskwa Area - Ontario, F. Scott, Dec. 22/86.

② Diamond Drilling, Captain Consolidated → Toronto file: PUKASKWA RIVER DDR #11, Resources Ltd., Nov-Dec/86. Holes Reports of Work #57 to #60 for 1987. #H-1 to H-3, H-5, H-6, H-8, H-9.