

Diamond Drilling



42C16SW0013 11 LIZAR

010

Township of LIZAR

Report No 11

Work performed by: Mid-North Engineering

Claim No	Hole No	Footage	Date	Note
SSM 500698	NR-L-78-1	635.0	July/78	(1)
	NR-L-78-2	696.0	Aug/78	(1)
	NR-L-78-3	659.0	Aug/78	(1)
	NR-L-78-4	712.0	Sept/78	(1)

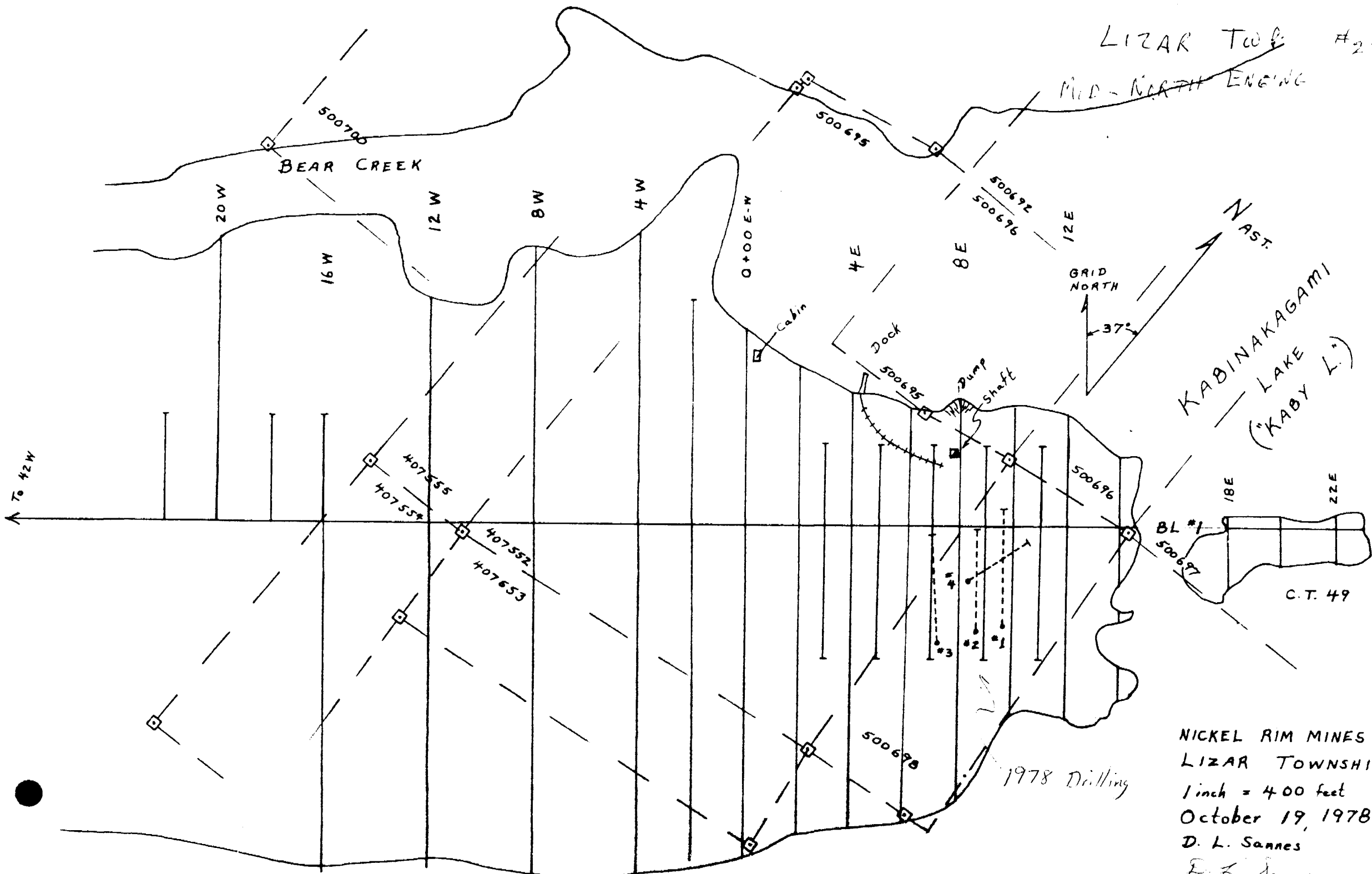
2702.0

Notes:

(1) #226-78

LIZAR TWP #226-10

MID-NORTH ENGINE



NICKEL RIM MINES LTD  
 LIZAR TOWNSHIP  
 1 inch = 400 feet  
 October 19, 1978  
 D. L. Sannes  
 F. L. Sannes

PROPERTY NICKEL RIM MINES LIMITED - LIZAR TOWNSHIP, ONTARIO Core Size: AXT HOLE No: NR-L 78-1  
 Location: 9+60 E, 3+80 S Recovery: 96-98 % Length: 635 f +  
 Lat 48° 51' 37" N Long 84° 28' 58" W Elev: 1057 Started: July 23, 1978 Completed: Aug. 7, 1978 Logged by: David L. Sannes Date: July 28 - Aug 4/78  
 Assays by: X-Ray Assay Labs - Toronto Drilled by: Amalgamated Drilling - Thunder Bay Bearing: 323° Ast Dip: Head: -56°, 200' = -51°  
 (Grid North) 400' = -44° 580' = -43°

Interval	Description:	C.A.	N. B.	SAMPLES				ASSAYS					
				from:	to:	No:	length:	g/t					
C - 14	Casing - No core - Casing left in place.			14	20	776	6	Nil	- Sludge				
				20	40	777	20	Nil	- Sludge				
14 - 17.0	MAFIC VOLCANIC	30'		40	60	778	20	Nil	- Sludge				
	5-10% trondhjemite dikes			60	80	779	20	Nil	- Sludge				
17.0 - 27.4	TRONDHJEMITE - Granite Porphyry type	45'		16.7	22.7	711	6.0	Nil					
	1% pyrite, minor chlorite and epidote.												
	No shear type quartz			22.7	27.7	712	5.0	Nil					
	Least 2" are fracture-type quartz with 1% pyrite, minor chlorite and gubbae.			27.7	35.0	713	7.3	Nil					
				35.0	42.0	714	7.0	Nil					
27.4 - 72.5	TRONDHJEMITE - Feldspar + Quartz Porphyry type	38'		42.0	49.0	715	7.0	Nil					
	64.0 - 72.5 - Increasingly fractured and altered			49.0	59.0	716	10.0	Nil					
	down-hole. Siliceous with epidote and hematized feldspar. 1% pyrite.			59.0	66.0	717	7.0	Nil					
				66.0	71.0	718	5.0	Nil					
72.5 - 82.0	MAFIC VOLCANIC	30'		71.0	76.0	719	5.0	Nil					
				76.0	82.0	720	6.0	Nil					
82.0 - 135.0	DIABASE												
	118.5 - 120.7 = Epidote rich section with up to 15% magnetite			117.0	122.0	721	5.0	Nil					
			Magnet.	122.0	127.5	722	5.5	Nil					
135.0 - 166.8	MAFIC VOLCANIC	38'		145.5	150.5	723	5.0	Nil					

PROPERTY: NICKEL RIM MINES LTD - LIZAR TWP.

Core Size: HOLE No: NR-L 78-1

Location: Recovery: % Length:

Lat: Long Elev: Started: Completed: Logged by: Date:

Assays by: Drilled by: Bearing: Dip: Head:

Interval	Description:	C.A.	N. B.	SAMPLES				ASSAYS			
				from:	to:	No:	length:	oz/E Au			
166.8-174.5	TRONDHJEMITE - Feld. + Qtz Por. type No vein quartz.	40°		166.8-177.0	724	10.2	Nil				
174.5-229.6	MAFIC VOLCANIC.			177.0-182.0	725	5.0	Nil				
	183.0-184.5 = Fracture type quartz vein with minors pyrite + chalc.			182.0-187.0	726	5.0	Nil				
	225.0-227.0 = Fracture zone. 10-20% quartz with 2-1% chalc. + pyrrhotite.			187.0-192.0	727	5.0	Tr				
				224.0-229.0	728	5.0	Tr				
229.6-233.0	TRONDHJEMITE - Feld. + Qtz Por type Highly siliceous.			229.0-234.0	729	5.0	Nil				
233.0-239.0	MAFIC VOLCANIC Miner trends.			234.0-239.0	730	5.0	Nil				
239.0-312.7	BRECCIA UNIT	45°									
	40-50% volcanic fragments in trends			239.0-249.0	731	10.0	Nil				
	284-299 = volcanic with minor trend			249.0-259.0	732	10.0	Nil				
	299-302 = trend			259.0-269.0	733	10.0	Nil				
	306-307 = lamprophyre			269.0-279.0	734	10.0	Nil				
				279.0-289.0	735	10.0	Nil				
				289.0-299.0	736	10.0	Nil				
				299.0-309.0	737	10.0	Nil				
				309.0-313.0	738	4.0	Nil				

PROPERTY: NICKEL RIM MINES LTD. - LIZAR TWP. Core Size: \_\_\_\_\_ HOLE No: NR-L 78-1  
 Location: \_\_\_\_\_ Recovery: \_\_\_\_\_ % Length: \_\_\_\_\_  
 Lat: \_\_\_\_\_ Long: \_\_\_\_\_ Elev: \_\_\_\_\_ Started: \_\_\_\_\_ Completed: \_\_\_\_\_ Logged by: \_\_\_\_\_ Date: \_\_\_\_\_  
 Assays by: \_\_\_\_\_ Drilled by: \_\_\_\_\_ Bearing: \_\_\_\_\_ Dip: Head: \_\_\_\_\_

Interval	Description:	C.A.	N. B.	SAMPLES				ASSAYS		
				from:	to:	No:	length:	oz/t Au		
312.7-635.0	TRONDHEMITE 30-50% medium-grained phenocrysts of feldspar and/or quartz in a fine-grained matrix (quartz-feldspar). 2-10% biotite. Minor pyrite and occasional chalcopyrite. Highly variable texture ranging from quartz-eye rich to feldspar rich to mixed quartz-feldspar to schist with few phenocrysts. Shearing varies from weak to intense. Normally, the most strongly-sheared sections are also the most quartz-eye rich, indicating that textural variations are simply a function of deformation.									
312.7-319.0	Quartz Perphyry type.	40°		313.0-319.0	739	6.0	Nil			
	No shear quartz, moderately sericitic		sericitic	319.0-323.0	740	4.0	Nil			
331.5-342.4	Qtz Per. type	45°		323.0-329.0	741	6.0	Tr			
	Common white (Kaolin?) shearing, little quartz			329.0-339.0	742	10.0	Tr			
				339.0-349.0	743	10.0	Tr			
				349.0-359.0	744	10.0	Nil			
				359.0-369.0	745	10.0	Nil			
				369.0-379.0	746	10.0	Nil			
				379.0-389.0	747	10.0	Nil			





PROPERTY NICKEL RIM MINES LIMITED - LIZAR TOWNSHIP, ONTARIO Core Size: AXT HOLE No: NR-L 78F2  
 Location: 8+60 E, 4+00 S Recovery: 98-99% Length: 690 ft  
 Lat: 48°51'39"N Long: 84°25'59"W Elev: 1059' Started: Aug. 5, 1978 Completed: Aug. 17, 1978 Logged by: David L. Sannes Date: Aug. 13-18, 1978  
 Assays by: X-Ray Assay Labs - Toronto Drilled by: Analgomatic Drilling - Thunder Bay Bearing: 323° Ast Dip: Head: -60 1/2', 200' = -57 1/2'  
 (Grid North) 400' = -53 3/4', 595' = -53'

Interval	Description:	C.A.	N. B.	SAMPLES				ASSAYS						
				from:	to:	No:	length:	oz/E	g/t	g/t	g/t			
0 - 16	Casing - No Core - Casing left in place.													
16 - 16.5	Mafic Volcanic	33°		16 - 20	20 - 40	832	833	4	20	Nil	Nil	-51 g/t		
16.5 - 26.0	TRENDAJEMITE (Felsic Sill) Quartz + Feldspar Porphyry type - sill Minor chert-type quartz with chalcopyrite	32°		40 - 60	60 - 80	834	835	20	20	Nil	Nil	-51 g/t		
26.0 - 26.0				16.0 - 26.0		780		10.0		Nil				
26.0 - 66.5	Mafic Volcanic 38.4 = 3 cm w/ 2 quartz stringers 2-5% csp+p+py. 42.0 - 44.5 = Felsic sill (Trend.) 55.7 - 57.3 = " " " 57.7 - 59.5 = " " "	36°		38.0 - 42.5		781		4.5		Nil				
	55.0 - 60.0			782		5.0		Tr						
	65.0 - 66.5 = shered, silicified section w/ 2-3% chalc.	35°		65.5 - 74.5		783		9.0		Tr				
66.5 - 83.0	FELSIC SILL (Trend.) - as 42-44 etc.	33°		74.5 - 83.0		784		8.5		Nil				
83.0 - 96.5	BRECCIA UNIT 70-80% volcanic - in trend.	30°												
96.5 - 102 1/2	TRENDAJEMITE - Feldspar Porphyry type Light grey, moderately shered.	40°												
	102 1/2 and 105 1/2 = Two, 1 ft. diabase dikes.			101.5 - 107.0		785		5.5		Nil				



PROPERTY: NICKEL RIM MINES LIMITED - LIZAR TOWNSHIP

Core Size: \_\_\_\_\_ HOLE No: NR-L 78-2

Location: \_\_\_\_\_ Recovery: \_\_\_\_\_ % Length: \_\_\_\_\_

Lat: \_\_\_\_\_ Long: \_\_\_\_\_ Elev: \_\_\_\_\_ Started: \_\_\_\_\_ Completed: \_\_\_\_\_ Logged by: \_\_\_\_\_ Date: \_\_\_\_\_

Assays by: \_\_\_\_\_ Drilled by: \_\_\_\_\_ Bearing: \_\_\_\_\_ Dip: Head: \_\_\_\_\_

Interval	Description:	C.A.	N. B.	SAMPLES				ASSAYS		
				from:	to:	No:	length:	oz/lb Au		
148.3 - 225.7	DIABASE									
225.7 - 256.3	MAFIC VOLCANIC	37°								
	237.5 - 240.5 - Much shearing with quartz-epidote fracturing. Minor pyrophyllite.			236.0 - 241.0	787	5.0	Tr			
	253 - 256.3 - Well fractured with hematitic quartz-feldspar webbing									
256.3 - 261.2	TRONDHJEMITE - Highly altered. Strongly sheared and highly siliceous. Minor chalc. and pyrite.	33°		255.0 - 261.5	788	6.5	Nil			
261.2 - 279.5	MAFIC VOLCANIC	35°								
	267 - 270 = BRECCIA w/ 40% trond.									
279.5 - 393.5	BRECCIA UNIT	35°		285.0 - 295.0	789	10.0	Nil			
	279.5 - 313 - 25-35% Trond.									
	313 - 340 - 50-60% Trond.			323.0 - 333.0	790	10.0	Nil			
	340 - 352 - 10% Trond.									
	352 - 372 - 40% Trond.			353.0 - 363.0	791	10.0	Nil			
	372 - 393.5 - 20-40% Trond.									
	385 = one ft. zone w/ 60-70% fracture quartz. 1% pyrite, minor chalc. and magnetite.			383.0 - 388.0	792	5.0	Nil			
				388.0 - 394.0	793	6.0	Nil			

PROPERTY: NICKEL RIM MINES LTD - LIZAR TWP.

Core Size:

HOLE No: NR-L 78-2

Location:

Recovery:

% Length:

Lat:

Long:

Elev:

Started:

Completed:

Logged by:

Date:

Assays by:

Drilled by:

Bearing:

Dip: Head:

Interval	Description:	C.A.	N. B.	SAMPLES				ASSAYS					
				from:	to:	No:	length:	oz/t Au					
393.5-696.0	TRONDHJEMITE Composed of quartz + feldspar with 5-10% biotite. Dominantly Feldspar Porphyry type which is moderately sheared, light to medium gray, medium to fine grained with abundant feldspar phenocrysts and lesser quartz "eyes". Minor pyrite.	38°											
				394.0-400.0		794	6.0	Nil					
				400.0-405.0		795	5.0	Nil					
404.3-406.4	Quartz Porphyry type Strongly sheared, purplish gray colour												
	405.5 = Quartz with Visible Gold 1" to 1 1/2" tapering, shear-type quartz vein with 1/2% pyrrhotite and one grain of sphalerite (w/galena?). About 30 dust-size particles of gold.	39°	V.G.	405.0-406.0		796	1.0	0.54	Note: All V.G. included in sample.				
				406.0-411.0		797	5.0	Nil					
				411.0-418.5		798	7.5	Nil					
		39°		418.5-424.5		799	6.0	Nil					
				424.5-437.5		800	9.0	Tr					
429.9-443.7	Quartz Porphyry type	40°		433.5-440.0		801	6.5	0.01					
	433.8-439.0 - Alternating sections of bleached, sericitic trond, and banded chlorite-biotite-amphibole.												
	440.5-442.3 = Lamprophyre												
447.1-448.5	Qtz. Por. w/ a 1/4" qtz vein	39°		446.0-452.0		803	6.0	Tr					
480.5-483.0	Qtz. Por. - no vein qtz.	40°		487.0-493.0		804	6.0	Tr					
509.3-513.2	Qtz. Por. w/ two qtz veins (1/4" & 1/2") 1-3% pyrite			503.0-508.0		805	5.0	Tr					
				508.0-513.0		806	5.0	Tr					

PROPERTY: NICKEL RIVER MINES LTD. - LIZAR TWP.

Core Size:

HOLE No: NR-L 78-2

Location:

Recovery:

% Length:

Lat:

Long:

Elev:

Started:

Completed:

Logged by:

Date:

Assays by:

Drilled by:

Bearing:

Dip: Head:

Interval	Description:	C.A.	N. B.	SAMPLES				ASSAYS					
				from:	to:	No:	length:	oz/t Au					
393.5-696.0	(Continued)												
513.2-519.3	Fractured zone with 20% scarse-grained, glassy quartz (fracture type) Much massive chlorite, scattered pyrite, cubas, minor magnetite and very minor chalco.			513.0-519.5	807	6.5	Ni/						
				519.5-526.0	808	6.5	Tr						
				526.0-532.0	809	6.0	Ni/						
538.7-543.1	Strongly sheared, very fine grained, dark gray 1/2-1% pyrite	40° 43		532.0-539.0	810	7.0	Tr						
	540.2-541.7 = Qtz Por 7 1% py			539.0-543.0	811	4.0	Tr						
543.1-544.0	Quartz zone Shear-type Qtz w/ 10% "fracture Qtz" 2-3% pyrite, minor po + py + molybdenite. No visible gold.		Qtz	543.0-544.0	812	1.0	0.32						
			MoS <sub>2</sub>										
544.0-547.0	Quartz Periphery type Few shear quartz veins with minor sphalerite	43°	Zn	544.0-547.0	813	3.0	Tr						
565.0-572.1	Qtz Por, type	40°		547.0-553.0	814	6.0	Tr						
	568.4-571.1 - Highly sericitic w/ two shear Qtz. (1/4" & 1/2") minor py,		Sericite	553.0-559.0	815	6.0	Tr						
				559.0-565.0	816	6.0	Tr						
				565.0-568.0	817	3.0	Tr						
				568.0-572.0	818	4.0	0.01						

PROPERTY: NICKEL RIM MINES LTD - LIZAR TWP. Core Size: \_\_\_\_\_ HOLE No: NR-L 78-2  
 Location: \_\_\_\_\_ Recovery: \_\_\_\_\_ % Length: \_\_\_\_\_  
 Lat: \_\_\_\_\_ Long: \_\_\_\_\_ Elev: \_\_\_\_\_ Started: \_\_\_\_\_ Completed: \_\_\_\_\_ Logged by: \_\_\_\_\_ Date: \_\_\_\_\_  
 Assays by: \_\_\_\_\_ Drilled by: \_\_\_\_\_ Bearing: \_\_\_\_\_ Dip: Head: \_\_\_\_\_

Interval	Description:	C.A.	N. B.	SAMPLES				ASSAYS					
				from:	to:	No:	length:	oz/l	g/t				
393.5 - 696.0	(Continued)												
572.1 - 580.0	Quartz - Serecitic Schist 15-20% shear type quartz veins to 1 1/2" Two main vein clusters are 573.4 - 573.9 and 574.8 - 575.8 Most serecitic section is 573.0 - 578.2 Quartz contains up to 1/2% (combined) sphalerite, galena, molybdenite, chalcocite and pyrrhotite as hairline fracture-fillings Some coarse pyrite - generally at gtz margins Visible gold @ 572.2 and 574.5. 572.2 - Three pinpoints - very difficult to see. 574.5 - About 20 dust-size particles. (Note: Most of V.G. is in retained 1/2 of core)	43°	ZONE										
			Quartz	572.0 - 576.0	819	4.0	0.10						
			Serecitic	576.0 - 580.0	820	4.0	0.02						
			V.G.	580.0 - 583.0	821	3.0	Nil						
				583.0 - 588.0	822	5.0	Tr						
				588.0 - 593.0	823	5.0	Tr						
				593.0 - 600.0	824	7.0	Tr						
601.0 - 605.5	Quartz Porphyry type Highly serecitic - no shear quartz	43"		600.0 - 606.0	825	6.0	0.02						
			Serecitic	606.0 - 613.0	826	7.0	Nil						
613.3 - 616.5	Quartz Por. type A 1/4" gtz - barren	45°		613.0 - 621.0	827	8.0	Tr						
622.3 - 629.0	Qtz. Por. type 622.3 - 625.6 - Serecitic w/ 15% shear quartz minor pyrite, possible grain of galena.	51°											
			Serecitic	621.0 - 629.0	828	8.0	Tr						

















PROPERTY NICKEL RIM MINES LTD. - LIZAR TWP.

Core Size:

HOLE No: NR-2 78-4

Location:

Recovery:

% Length:

Lat

Long:

Elev:

Started:

Completed:

Logged by:

Date:

Assays by:

Drilled by:

Bearing:

Dip: Head:

Interval	Description:	C. A.	N. B.	SAMPLES				ASSAYS					
				from:	to:	No:	length:	Cr/E Au					
186.0-712.0	(Continued)												
384.5-395.5	Quartz Per. type - few quartz eyes												
384.4-385.3	50% shear quartz w/ 2-3% chalc + pyrite, minor galena and pyrrhotite		Cu Pb	384.5-385.5	879	1.0	Nil						
403.2-404.5	Lampicphyre												
420.8-421.8	"												
429.3-432.0	"	5-10'											
		22'		434.0-441.0	880	7.0	Nil						
451.5-457.5	Quartz Per. type												
451.5-452.5	Highly sericitic	20'	Sericite	451.5-452.5	881	1.0	Tr						
452.5-454.5	Shear Quartz with visible gold Occasional sericite shears. To 1% combined sphalerite and galena, minor pyrrhotite and a trace of chalc. 1/2% pyrite Approximately 20 dust-size gold particles in the lower 0.5 ft. Also about 10 grains in a chip of shattered core (sample # 882). True width of vein is about 0.8 ft.		V.G. Zn Pb	452.5-454.0	882	1.5	0.48						
454.5-457.5	Highly siliceous with no vein quartz or sericite.	19		454.6-457.5	884	2.9	Tr						
				462.0-466.0	885	4.0	Nil						
				466.0-470.0	886	4.0	Tr						



