



42C16SW0017 10 LIZAR

010

Diamond Drilling

Township of LIZAR

Report NO 10

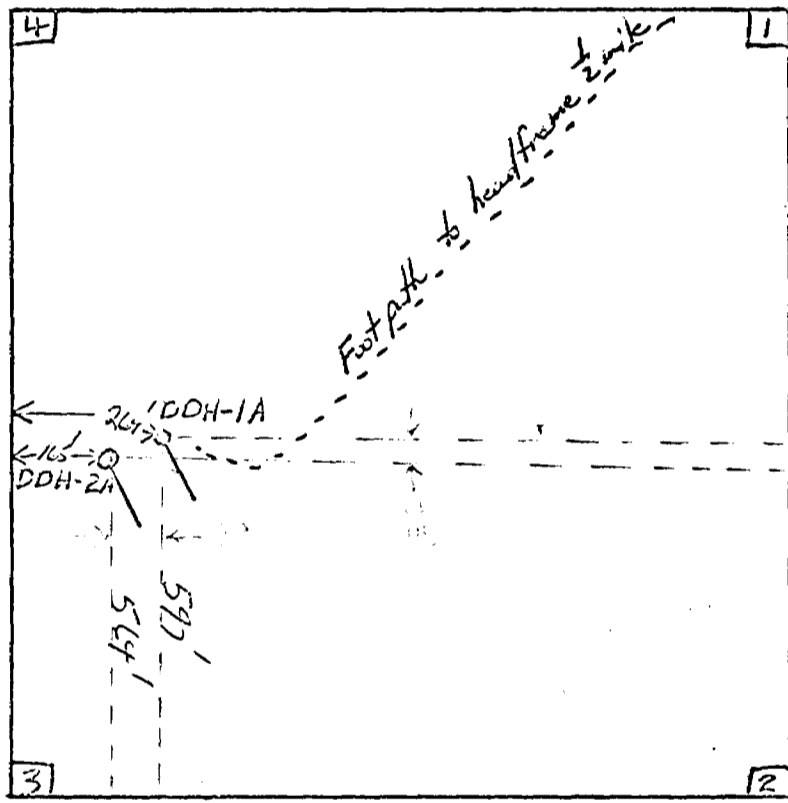
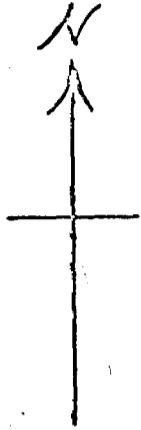
Work performed by: Primrock Mining

Claim NO	Hole NO	Footage	Date	Note
SSM 83323	1-A	125.0'	1969-70	(1)
	2-A	125.0'	1969-70	(1)

Notes:

(1) #5/70

Location Map for D.D.H 1A, 2A
 Claim # 83323



Start in by building
 on kitchen to go out later
 west of back frame

Scale 1" = 330'

5/70 Liza Top
 Premises by 2 Eggs. Fed

Diamond Drill Log.

Hole No 1A.
Total length 125'
Core EXT
Bearing S. 20° E
Inclination 70°
Claim No 83323.

- 0-25' Greenstone with more than 10% feldspars and quartz. The feldspars and quartz occurring as small bands about 1/10" in width. The greenstone is also weakly mineralized with pyrite occurring as flecks and in places small veinlets.
- 25'-55'9" Greenstone only the quartz feldspar banding is more pronounced and the pyrite is more abundant.
- 55'9"-85' Porphyritic quartz the phenocrysts being a light blue quartz about 1/10" in diameter. Pyrite is distributed throughout the section along with fine particles of biotite.
- 85'-95' Vein material composed of 2 generations of quartz. The second generation quartz is weakly mineralized and a bluish color. The remaining quartz has a texture like that of a fine grained poorly cemented sandstone.

45' - 115' - Porphyritic quartz as before
115' - 125' - Gneiss diorite.

Logged by

John McEwen

Diamond Drill Log.

Hole No 2A
Total length 125'
Core EXT
Bearing S.20°E.
Inclination 70°
Claim No 83323.

0-45' Greenstone with more than 10%
feldspars. The feldspars and quartz
occur in small bands about 1/10" in
width. Greenstone is weakly mineralized
with pyrite.

45'-62 7/8" Porphyritic quartz. The phenocrysts being
a light blue quartz about 1/10" in
diameter. Pyrite and small particles of
biotite are distributed throughout.

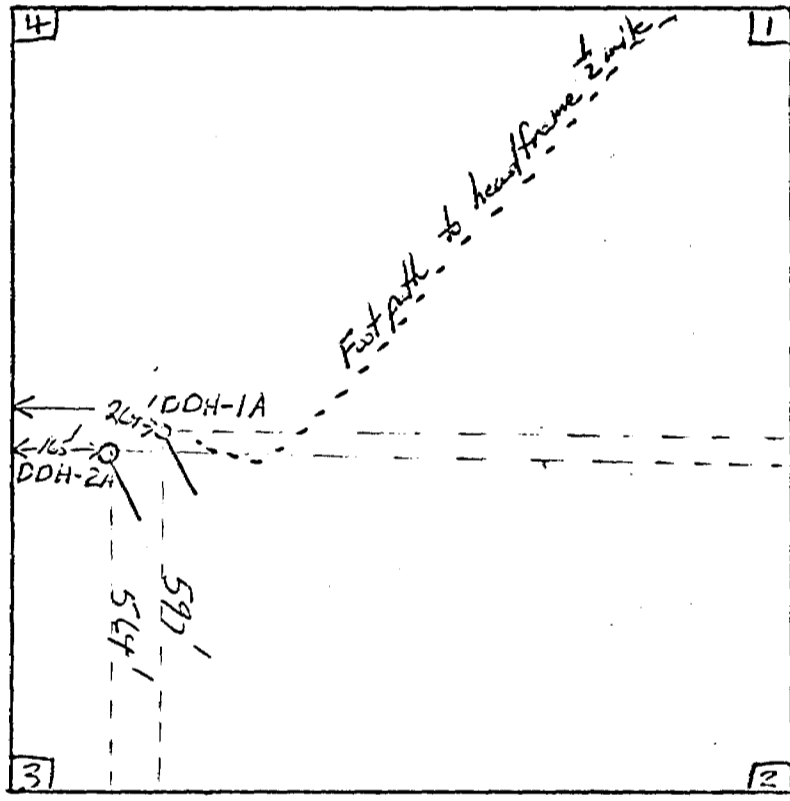
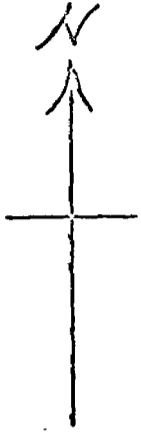
62 7/8" - 69' Vein material composed of 2 generations
of quartz. The second generation
quartz is weakly mineralized and a
bluish colour. Along the contact of
the bluish quartz are bands of
a darker blue to black colour caused
by the presence of galena. The
remaining vein material is well mineralized
with pyrite and.

69'-80' - Porphyritic quartz as before
80'-125' - Granit Diorite

Logged by

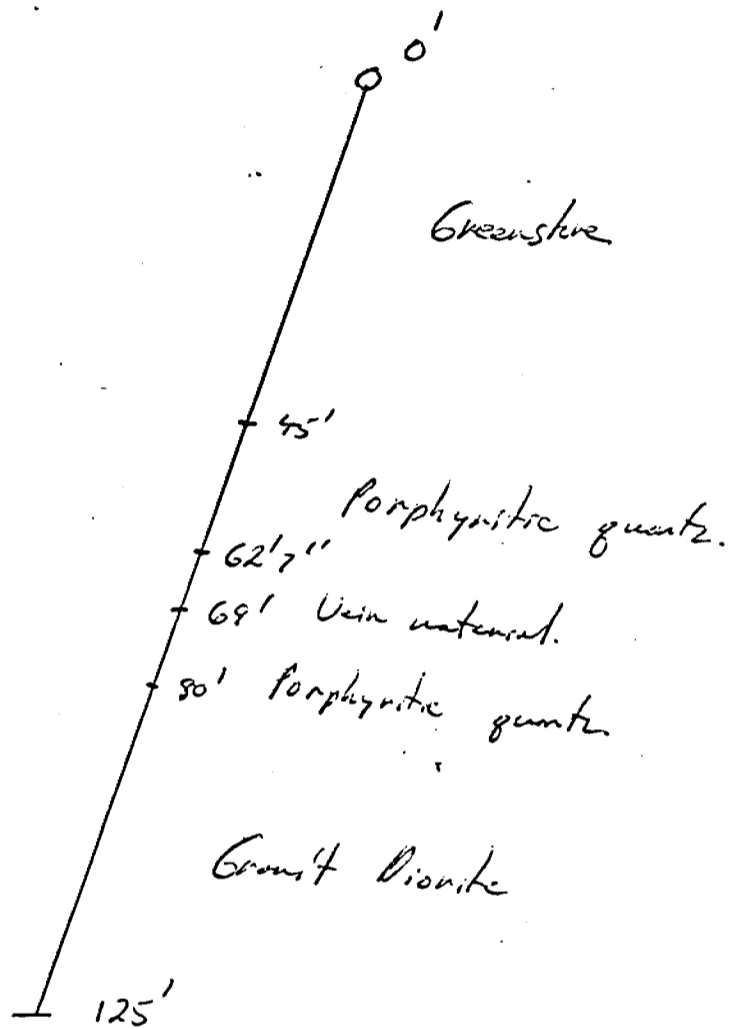
John McEwen

Location Map for D.D.H 1A, 2A
Claim # 83323



Scale 1" = 330'

Profile DDH 2A. Bearing S 20° E.
Inclination 70°
Scale 1" = 25'



Lore McCarthy