



42D15SW0109 13 SYINE

010

DIAMOND DRILLING

Township: Syine

Report No: 13

WORK PERFORMED FOR: Michan Exploration Inc.

RECORDED HOLDER: SAME AS ABOVE [x]

: OTHER [ ]

<u>CLAIM NO.</u>	<u>HOLE NO.</u>	<u>FOOTAGE</u>	<u>DATE</u>	<u>NOTE</u>
TB 603912	4410-87-1	400'	Jan/87	(1)
	4410-87-2	451'	Jan/87	(1)
	4410-87-3	472'	Jan-Feb/87	(1)
	4410-87-4	546'	Feb/87	(1)
	4410-87-5	1006'	Feb/87	(1)
TB 603915	4410-87-6	500'	Feb/87	(1)
	4410-87-7A	501'	Feb/87	(1)
	4410-87-8	497'	Feb/87	(1)
TB 603912	4410-87-9	600'	Feb/87	(1)

NOTES: (1) #140-87(filed in July/87)

# David R. Bell Geological Services Inc.

## DIAMOND DRILL HOLE RECORD

Project 4410

Company Micham Exploration Inc.

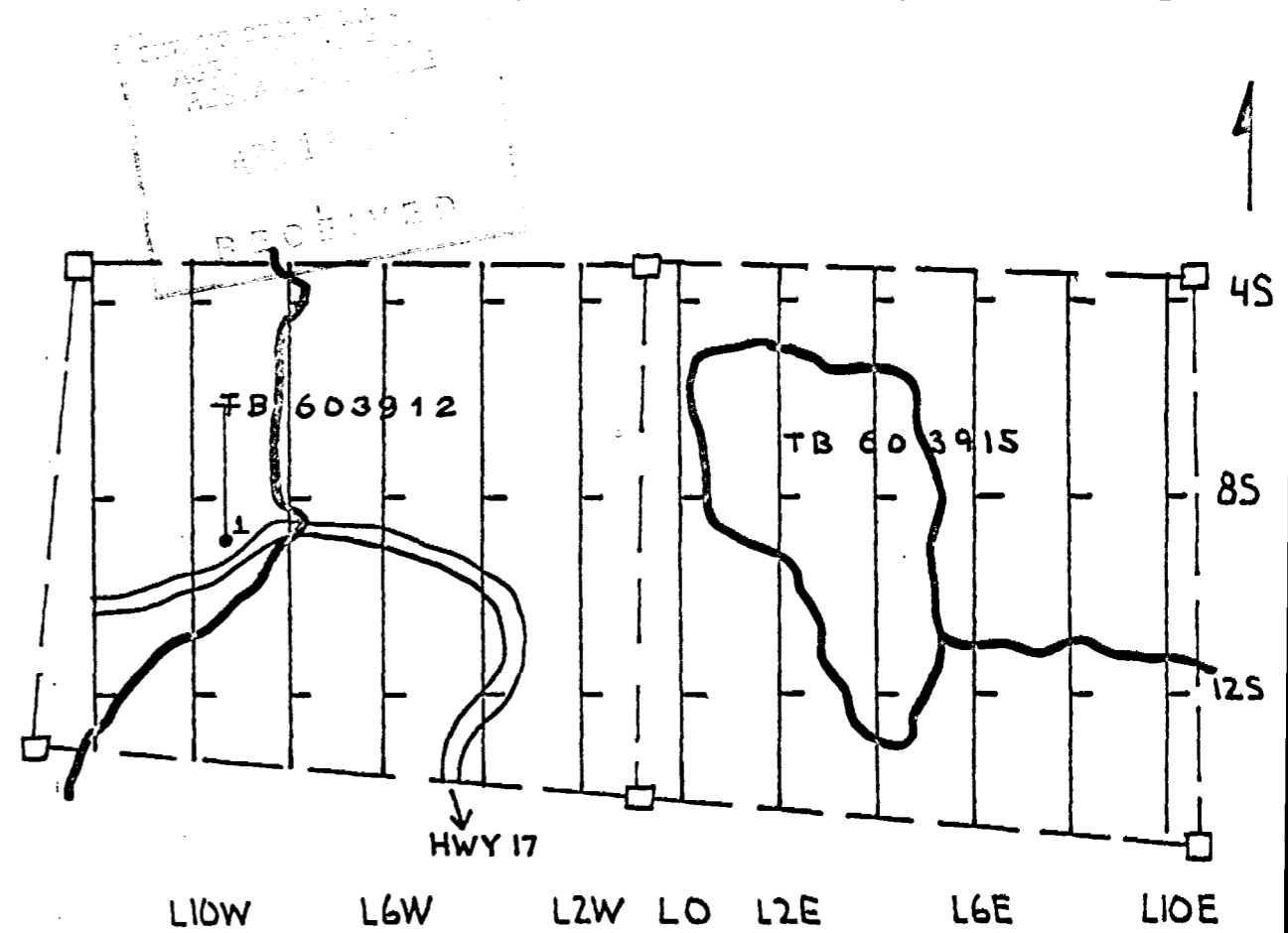
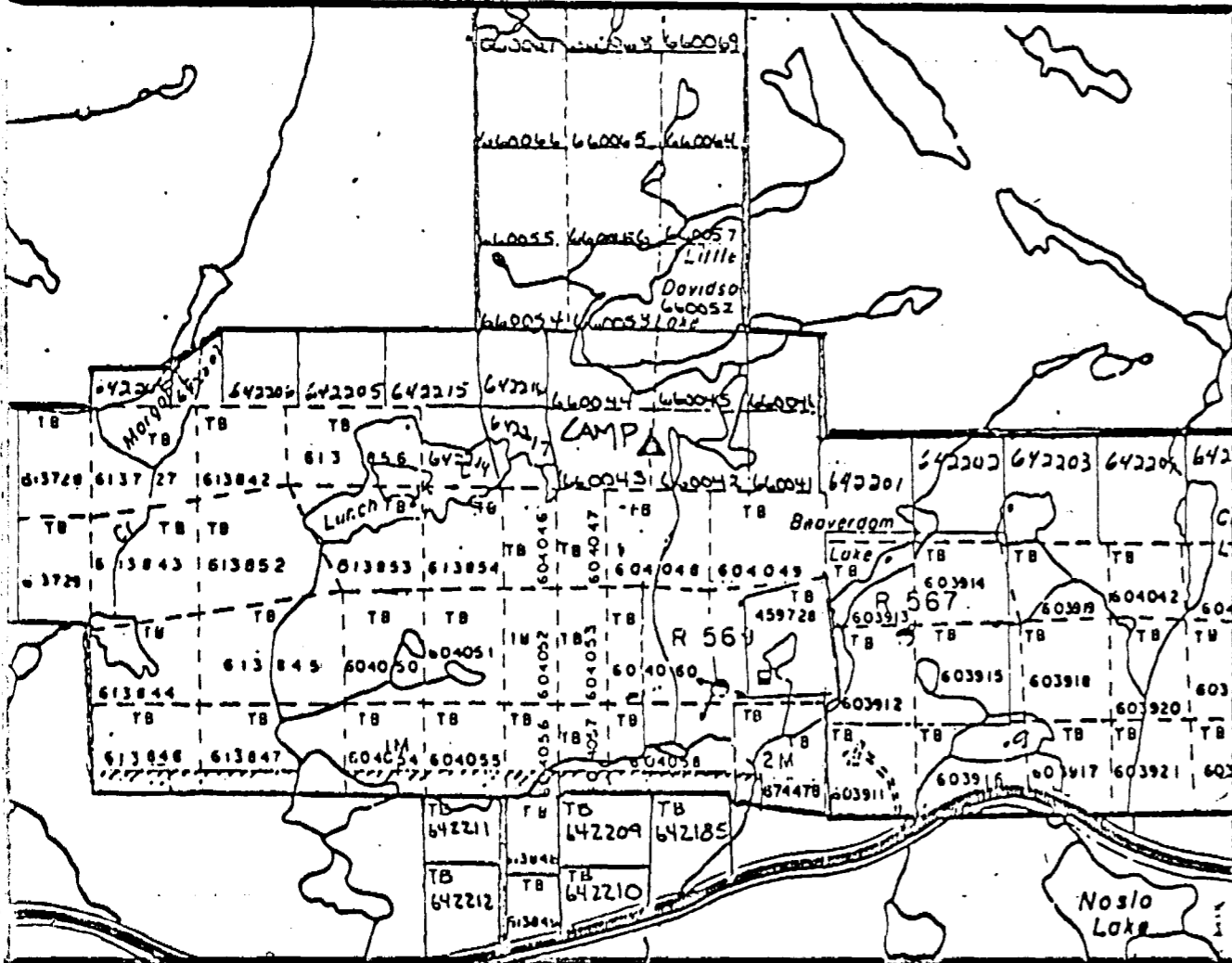
Hole No. 4410-87-1

LOCATION		DIP TEST		LEVEL	HORIZONTAL COMPONENT	DATE STARTED
AREA or TWP. Syine Township	FOOTAGE	ANGLE		ELEVATION	283'	Jan. 24/87
		RECORDING	CORRECTED			
	0		-50			
CLAIM NO. TB603912	150		-45	LATITUDE	280'	DATE FINISHED
	300		-42			
NTS	UTM			9+35W	BEARING	LOGGED BY
				9+00S	0'	
					LENGTH	PURPOSE
					400' BQ core	TOT. RECOVERY
					CORE LOCATION	

DIAMOND DRILL HOLE LOCATION SKETCHES  
CLAIM MAP Scale: 1 inch to 1/4 mile

DIAMOND DRILL HOLE LOCATION  
WITH RESPECT TO CLAIM BOUNDARIES  
Scale: 1 inch to 400 feet

Signature *M. Simunovic*



# David R. Bell Geological Services Inc.

## DIAMOND DRILL HOLE LOG

PROJECT 4410

Company Micham Exploration Inc.

HOLE No. 4410-87-1

1 of 8

	FOOTAGE		ROCK TYPE AND DESCRIPTION (alteration, structure, mineralization)	CORE ANGLES TO AXIS	% SULPHIDES	SAMPLE			
	FROM	TO				NUMBER	FROM	TO	LENGTH
	0	9	<u>Overburden:</u> casing left in hole						
	9	164	<p><u>Mafic Tuff</u> - medium ash tuff</p> <ul style="list-style-type: none"> <li>-chloritic and biotitic</li> <li>-both felsic and mafic fragments up to .05 of an inch in diameter, occasionally up to .1 or .2</li> <li>-felsics are comprised of qz and feldspar</li> <li>-possible amphibole needles present</li> <li>-extremely chloritic on slip plans with minor hematite locally</li> <li>-some larger up to 2 inches wide felsic bands (possible fragments) 25-27 feet</li> <li>-no carb except locally on some slip planes</li> <li>-weak foliation has been developed 55° local variations</li> <li>-≈10 feet narrow 2" qz-carb vein, hematite on contacts</li> </ul> <p><u>Sample</u> - 4410-1801 10-12</p> <ul style="list-style-type: none"> <li>-qz-carb vein hematite on contacts</li> <li>-also more felsic alt. over entire sample</li> </ul> <p><u>Sample</u> - 4410-1802 25-30</p> <ul style="list-style-type: none"> <li>-felsic banding</li> <li>-hematite assoc. locally with fracturing</li> <li>-minor silic. - tr py</li> </ul> <p><u>Sample</u> - 4410-1803 30-35</p> <ul style="list-style-type: none"> <li>-same as 1802</li> </ul> <p><u>Sample</u> - 4410-1804 35-39</p> <ul style="list-style-type: none"> <li>-same as 1802</li> </ul> <p>-58.7 fault .5 inches in diameter</p> <ul style="list-style-type: none"> <li>-clay and breccia fragments</li> <li>-48° to core axis</li> </ul>						
						1801	10	12	2
						1802	25	30	5
						1803	30	35	5
						1804	35	39	4

# David R. Bell Geological Services Inc.

## DIAMOND DRILL HOLE LOG

 PROJECT 4410

 HOLE No. 4410-87-1

 Page 2 of 8

 Company Micham Exploration Inc.

FOOTAGE		ROCK TYPE AND DESCRIPTION (alteration, structure, mineralization)	CORE ANGLES TO AXIS	% SULPHIDES	SAMPLE			
FROM	TO				NUMBER	FROM	TO	LENGTH
164	246	-≈75 feet qz-carb vein barren -≈82-83 minor hematite filled fractures qz-carb as well -possible that some thin units of flow may exist with the tuff -86-88 ft. possible garnets present  -foliation still around 50° -150.15 .5 inch fault zone (brecciation)  <u>Sample - 4410-1805 149.85-154</u> -fracturing probably due to fault -silicified, carb in fractures -py along possible fault developed foliation 70° -≈1% py -possible minor sericite has developed  <u>Sample - 4410-1806 154-157.2</u> -same as 1805 except much weaker -≈164 brown biotite sections appear in core  <u>Basalt - fg-mg basalt</u> -appear to contain vesicles locally -may be a very fine ash tuff -≈169.15 brown biotitic sections appear regularly -also felsic siliceous alt. - <1% py and po assoc.  <u>Sample - 4410-1807 169.15-174.1</u> -biotitic sections -local felsic alt. - <1% py and po  <u>Sample - 4410-1808 174.1-179.1</u> -same as 1807	70° 1%					
				1805	149.85	154	4.15	
				1806	154	157.2	3.2	
				1807	169.15	174.1	4.95	
				1808	174.1	179.1	5	

# David R. Bell Geological Services Inc.

## DIAMOND DRILL HOLE LOG

PROJECT 4410

Company Micham Exploration Inc.

HOLE No. 4410-87-1

Page 3 of 8

	FOOTAGE		ROCK TYPE AND DESCRIPTION (alteration, structure, mineralization)	CORE ANGLES TO AXIS	% SULPHIDES	SAMPLE			
	FROM	TO				NUMBER	FROM	TO	LENGTH
			<p>Sample - 4410-1809 179.1-184 -same as 1807</p>			1809	179.1	184	4.9
			<p>Sample - 4410-1810 184-189 -same as 1807</p>			1810	184	189	5
			<p>Sample - 4410-1811 189-194 -same as 1807</p>			1811	189	194	5
			<p>Sample - 4410-1812 194-197.7 -same as 1807</p>			1812	194	197.7	3.7
			<p>-at <math>\approx</math> 216 start getting some localized sections of very minor sericitic alt. -also start getting some hematization assoc. with this in fractures as well -only traces of pyrite assoc. with this -some local shearing -garnets present 232.2-233.5 -this degree of alteration continues to approx. 246 -221-222.3 mafic tuff coarse grained -fol. <math>\approx</math> 65°</p>	65°					
			<p>Sample - 4410-1813 216-221 -as described above</p>			1813	216	221	5
			<p>Sample - 4410-1814 221-226 -same as 1813</p>			1814	221	226	5
			<p>Sample - 4410-1815 226-231 -same as 1813</p>			1815	226	231	5
			<p>Sample - 4410-1816 231-236 -same as 1813</p>			1816	231	236	5

# David R. Bell Geological Services Inc.

## DIAMOND DRILL HOLE LOG

 PROJECT 4410

 Company Micham Exploration Inc.

 HOLE No. 4410-87-1

 Page 4 of 8

	FOOTAGE		ROCK TYPE AND DESCRIPTION (alteration, structure, mineralization)	CORE ANGLES TO AXIS	SULPHIDES	SAMPLE			
	FROM	TO				NUMBER	FROM	TO	LENGTH
			Sample - 4410-1817 236-241 -same as 1813			1817	236	241	5
			Sample - 4410-1818 241-246 -same as 1813			1818	241	246	5
246	313.65		<u>Carbonatized-Sericitized Shear</u> -sericitization is very minor -slight purple hue due to minor hematization -hematization increases after 261 -≈266 core becomes magnetic -1-2% magnetite present -also after this point py increases to 1-2% along foliation -foliation 266 65-75° -qz-carb fractures throughout -appears to be cherty like fragments						
			Sample - 4410-1819 246-250.9 -weak carb-seric. shear -tr py -qz-carb fract.  -246 possible fault some mud and brecc.			1819	246	250.9	4.9
			Sample - 4410-1820 250.9-256 -same as 1819			1820	250.9	256	5.1
			Sample - 4410-1821 256-261 -same as 1819			1821	256	261	5
			Sample - 4410-1822 261-265.9 -same as 1819			1822	261	265.9	4.9

# David R. Bell Geological Services Inc.

## DIAMOND DRILL HOLE LOG

 PROJECT 4410

 HOLE No. 4410-87-1

 Page 5 of     

 Company Micham Exploration Inc.

FOOTAGE		ROCK TYPE AND DESCRIPTION (alteration, structure, mineralization)	CORE ANGLES TO AXIS	% SULPHIDES	SAMPLE				
FROM	TO				NUMBER	FROM	TO	LENGTH	
		-266 magnetite comes in -more intense shearing and hematization of the core -1-2% py along fol. -1-2% magnetite -carb along fol.  Sample - 4410-1823 265.9-269.8 -as described above 266 on  Sample - 4410-1824 269.8-272.55 -weak section in above alt. -less shearing  Sample - 4410-1825 272.55-276 -same as 1823  -277.15-277.65 fault clay seam -brecciation -approx. angle 52°  Sample - 4410-1826 276-278.55 -same as 1823  Sample - 4410-1827 278.55-280.15 -qz-vein -appears barren  Sample - 4410-1828 280.15-283.15 -same as 1823  Sample - 4410-1829 283.15-286 -qz-vein -host rock inclusion of altered rock  Sample - 4410-1830 286-290.45 -same as 1829							
					1823	265.9	269.8	3.9	
					1824	269.8	272.55	2.75	
					1825	272.55	276	3.45	
					1826	276	278.55	2.55	
					1827	278.55	280.15	1.6	
					1828	280.15	283.15	3.0	
					1829	283.15	286	2.85	
					1830	286	290.45	4.45	

# David R. Bell Geological Services Inc.

## DIAMOND DRILL HOLE LOG

PROJECT 4410

Company Micham Exploration Inc.

HOLE No. 4410-87-1

Page 6 of 8

FOOTAGE		ROCK TYPE AND DESCRIPTION (alteration, structure, mineralization)	CORE ANGLES TO AXIS	% SULPHIDES	SAMPLE				
FROM	TO				NUMBER	FROM	TO	LENGTH	
		-after this large qz-vein more qz-veining occurs but alteration of the host rock decreases -also, except for very localized sections, core is no longer magnetic  <u>Sample - 4410-1831 290.45-292.6</u> -carb and silic. -mineral content py decreases to 1% -minor qz-veining -localized sections of massive py and cpy  -blebs of cpy present now  <u>Sample - 4410-1832 292.6-294.6</u> -qz vein -blebs py and cpy  <u>Sample - 4410-1833 294.6-298.3</u> -section of slightly better alteration -minor ser, carb -magnetite and py 1-2%  -fol. 296  <u>Sample - 4410-1834 298.3-300.1</u> -qz-vein with inclusions of host altered rock  <u>Sample - 4410-1835 300.1-302.3</u> -minor silic. -carb -hematite assoc. with qz-veining -1% py disseminated -this alt. dies with depth within sample  <u>Sample - 4410-1836 302.3-304.8</u> -qz-vein with inclusions of altered rock							
			55°	1	1831	290.45	292.6	2.15	
					1832	292.6	294.6	2.0	
					1833	294.6	298.3	3.7	
					1834	298.3	300.1	1.8	
					1835	300.1	302.3	2.2	
				1%	1836	302.3	304.8	2.5	



# David R. Bell Geological Services Inc.

## DIAMOND DRILL HOLE LOG

 PROJECT 4410

 HOLE No. 4410-87-1

 Page 7 of     

 Company Micham Exploration Inc.

	FOOTAGE		ROCK TYPE AND DESCRIPTION (alteration, structure, mineralization)	CORE ANGLES TO AXIS	SULPHIDES	SAMPLE			
	FROM	TO				NUMBER	FROM	TO	LENGTH
			Sample - 4410-1837 304.8-309.8 -alteration weak -carb along fol. -py along fol.  -310, .3 inch clay and brecc. seam <u>fault zone</u>	70°		1837	304.8	309.8	5.0
			Sample - 4410-1838 309.8-313.65 -alteration all but gone -some py assoc. with qz-carb veins			1838	309.8	313.65	3.85
	313.65	400	Mafic Tuff - green fg pyroxene rich -has some minor interbeds of lapilli tuff 313.65-324.45						
			Sample - 4410-1839 313.65-316.9 -some interbeds of lapilli tuff -carb alt.  -≈326 start getting bands of biotitic alteration as well as chlorite, intense to approx. 360 feet -also find felsic fragments locally -minor qz-carb veining -tr py -≈350 fol.	63°		1839	313.65	316.9	3.25
			Sample - 4410-1840 316.9-321.9 -mafic tuff tr py			1840	316.9	321.9	5
			Sample - 4410-1841 321.9-326 -same as 1840			1841	321.9	326	4.1
			Sample - 4410-1842 326-331 -mafic tuff -biotitic and chloritic banding			1842	326	331	5

# David R. Bell Geological Services Inc.

## DIAMOND DRILL HOLE LOG

PROJECT 4410

HOLE No. 4410-87-1

Page 8 of 8

Company Micham Exploration Inc.

	FOOTAGE		ROCK TYPE AND DESCRIPTION (alteration, structure, mineralization)	CORE ANGLES TO AXIS	% SULPHIDES	SAMPLE			
	FROM	TO				NUMBER	FROM	TO	LENGTH
			<u>Sample - 4410-1843</u> 331-336 -same as 1842			1843	331	336	5
			<u>Sample - 4410-1844</u> 336-341 -same as 1842			1844	336	341	5
			<u>Sample - 4410-1845</u> 341-346 -same as 1842			1845	341	346	5
			End of Hole 400'						

# David R. Bell Geological Services Inc.

## DIAMOND DRILL HOLE RECORD

Project 4410

Company Micham Exploration Inc.

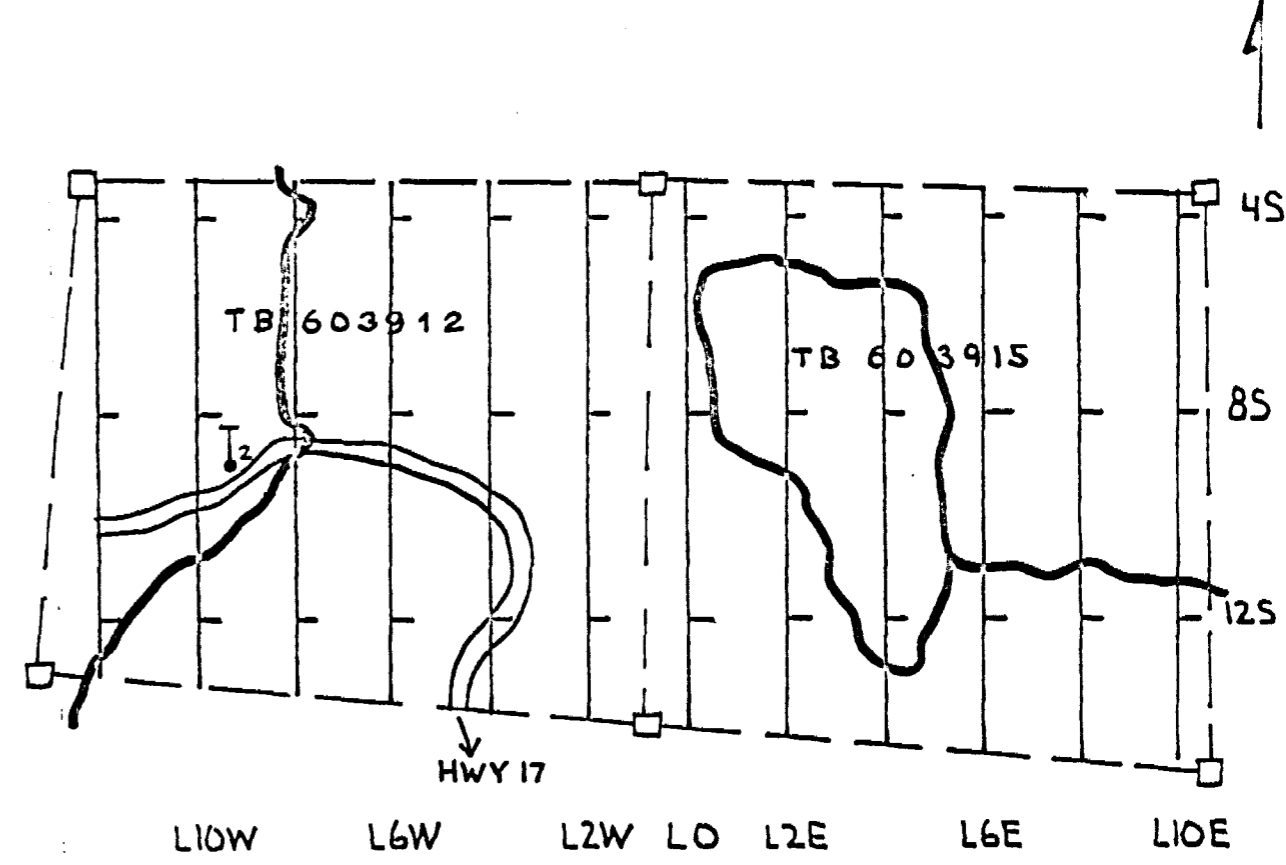
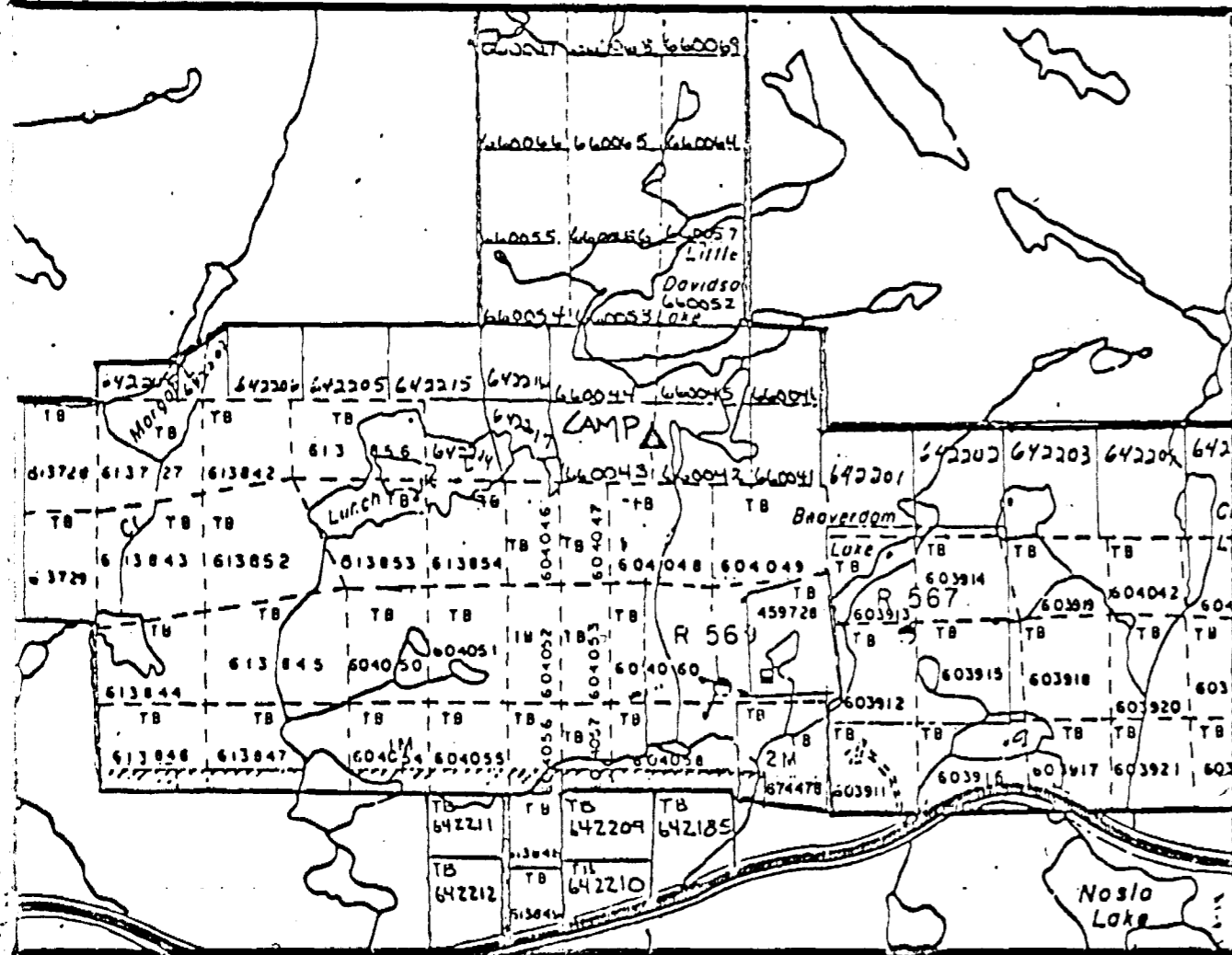
Hole No. 4410-87-2

LOCATION	DIP TEST		LEVEL	HORIZONTAL COMPONENT	DATE STARTED	
AREA or TWP. Syne Township	FOOTAGE	ANGLE		77'	Jan. 27/87	
		0	RECORDING	CORRECTED	VERTICAL COMPONENT	DATE FINISHED
				-80	442	Jan. 29/87
				-80	BEARING	LOGGED BY
CLAIM NO. TB603912	150		-80	0	M. Simunovic	
	300		-80	LATITUDE	LENGTH	
	450		-80	L9+35W	451 BQ core	
NTS	UTM			DEPARTURE	CORE LOCATION	
				L9+00S	TOT. RECOVERY	

**DIAMOND DRILL HOLE LOCATION SKETCHES CLAIM MAP** Scale: 1 inch to 1/4 mile

**DIAMOND DRILL HOLE LOCATION WITH RESPECT TO CLAIM BOUNDARIES** Scale: 1 inch to 400 feet

Signature *Mike Simunovic B.Sc.*



# David R. Bell Geological Services Inc.

## DIAMOND DRILL HOLE LOG

 PROJECT 4410

 HOLE No. 4410-87-2 Page 1 of 3

 Company Micham Exploration Inc.

	FOOTAGE		ROCK TYPE AND DESCRIPTION (alteration, structure, mineralization)	CORE ANGLES TO AXIS	SULPHIDES	SAMPLE			
	FROM	TO				NUMBER	FROM	TO	LENGTH
	0	4	<u>Overburden</u> : casing left in hole						
	4	278.7	<p><u>Mafic Tuff</u> - pyroxene rich, some possible amphiboles present</p> <p>-chloritic on slip seams</p> <p>-felsic fragments up to .1 of an inch</p> <p>-both qz and feldspar fragments</p> <p>-some brown biotitic banding</p> <p>-fol. 25° at 32"</p> <p>-some felsic banding</p> <p><u>Sample - 4410-1846 13.85-17.6</u></p> <p>-minor silic. and hem.</p> <p>-tr py</p> <p>-foliated (sheared)</p> <p>-after this point very little, if any, alteration of interest</p> <p>-tuff contains traces of py</p> <p>-some minor qz-carb veining, some of which contains minor hematitic veining</p> <p>-some minor units of flow (or just a very fine grained tuff) may be present</p> <p><u>Sample - 4410-1847 64-67.6</u></p> <p>-qz-vein</p> <p>-appears barren</p> <p><u>Sample - 4410-1848 67.6-72.6</u></p> <p>-minor shearing of tuff assoc. with intrusion of vein</p> <p>-170.8 <u>fault</u> clay seam present, brecciation</p> <p>-≈ 2.0 foot section above the fault which is hematized and silicified</p> <p>-after the fault to ≈ 180' the core is weakly altered</p>	25°					
						1846	13.85	17.6	3.75
						1847	64	67.6	3.6
						1848	67.6	72.6	5.0

# David R. Bell Geological Services Inc.

## DIAMOND DRILL HOLE LOG

PROJECT 4410

HOLE No. 4410-87-2

Page 2 of 3

Company Micham Exploration Inc.

FOOTAGE		ROCK TYPE AND DESCRIPTION (alteration, structure, mineralization)	CORE ANGLES TO AXIS	% SULPHIDES	SAMPLE				
FROM	TO				NUMBER	FROM	TO	LENGTH	
		-at $\approx$ 180 silicification and shearing of the core increases -also py present along foliation -some possible cherty beds around 186.5' (possible iron formation) -magnetic here with py, magnetite -also po present in some fracture filling -this alteration may be the result of the above fault  Sample - 4410-1849 169.5-170.8 -minor silic. -hematization -carb -tr py  Sample - 4410-1850 170.8-173 -minor silic. and shear -tr py  Sample - 4410-1851 173-178 -same as 1850  Sample - 4410-1852 178-180.3 -same as 1850 -minor biotite banding  Sample - 4410-1853 180.3-185 -silic. and cherty -minor hematization -fol. -py along fol. 1-2%  Sample - 4410-1854 185-187.7 -same as 1853 except more intense -locally magnetic due to po and magnetite							
			33°						
					1849	169.5	170.8	1.3	
					1850	170.8	173	2.2	
					1851	173	178	5.0	
					1852	178	180.3	2.3	
					1853	180.3	185	4.7	
					1854	185	187.7	2.7	

# David R. Bell Geological Services Inc.

## DIAMOND DRILL HOLE LOG

PROJECT 4410

Company Micham Exploration Inc.

HOLE No. 4410-87-2

Page 3 of 3

	FOOTAGE		ROCK TYPE AND DESCRIPTION (alteration, structure, mineralization)	CORE ANGLES TO AXIS	% SULPHIDES	SAMPLE			
	FROM	TO				NUMBER	FROM	TO	LENGTH
			<p>Sample - 4410-1855 187.7-191.05 -same as 1854</p> <p>-at this point the alt. weakens -start getting some brown biotite banding now -still some localized sections of silicification, carb as well</p>			1855	187.7	191.05	3.35
			<p>Sample - 4410-1856 191.05-193.7 -tuff with brown biotite banding -tr py</p>	23°		1856	191.05	193.7	2.65
			<p>Sample - 4410-1857 193.7-195.1 -6 inch section of silic. and brecc. -tr py -silic. appears bedded</p>			1857	193.7	195.1	1.4
			<p>Sample - 4410-1858 195.1-197.5 -8 inch section of carb and 1% py</p> <p>-≈226-256 tuff coarses -chloritic fragments or growths up to .1 of an inch in diameter</p>			1858	195.1	197.5	2.4
278.7	345		<p><u>Basalt</u> - fine grained -green, pyroxene rich -possibly may be a very fine ash tuff -300.4 start getting brown biotite banding -fol. 305' -some localized sections of felsic alteration -some qz-carb veining -local silicification with minor sericitic alt. -some hematization assoc. with fracturing</p>	43°					

# David R. Bell Geological Services Inc.

## DIAMOND DRILL HOLE LOG

PROJECT 4410

HOLE No. 4410-87-2

Page 4 of 8

Company Micham Exploration Inc.

FOOTAGE		ROCK TYPE AND DESCRIPTION (alteration, structure, mineralization)	CORE ANGLES TO AXIS	% SULPHIDES	SAMPLE			
FROM	TO				NUMBER	FROM	TO	LENGTH
		<p>Sample - 4410-1859 300.45-305                      -biotitic banding                      -local felsic alt.                      -tr py                      -minor fract. with assoc. silic. and hem.</p>			1859	300.45	305	4.55
		<p>Sample - 4410-1860 305-310                      -same as 1859</p>			1860	305	310	5
		<p>Sample - 4410-1861 310-315                      -same as 1859</p>			1861	310	315	5
		<p>Sample - 4410-1862 315-320                      -same as 1859</p>			1862	315	320	5
		<p>Sample - 4410-1863 320-325                      -same as 1859</p>			1863	320	325	5
		<p>Sample - 4410-1864 325-330                      -same as 1859</p>			1864	325	330	5
		<p>Sample - 4410-1865 330-335                      -same as 1859</p>			1865	330	335	5
		<p>-335 start getting more hematitic alt.                      -foliation varies here 30-40°                      - ≈ 345 core becomes pervasively carbonatized</p>	30-40					
		<p>Sample - 4410-1866 335-340                      -same as 1859                      -more hem.</p>			1866	335	340	5
		<p>Sample - 4410-1867 340-345                      -same as 1866</p>			1867	340	345	5

# David R. Bell Geological Services Inc.

## DIAMOND DRILL HOLE LOG

PROJECT 4410

Company Micham Exploration Inc.

HOLE No. 4410-87-2 Page 5 of 8

	FOOTAGE		ROCK TYPE AND DESCRIPTION (alteration, structure, mineralization)	CORE ANGLES TO AXIS	% SULPHIDES	SAMPLE				
	FROM	TO				NUMBER	FROM	TO	LENGTH	
	345	405	<p><u>Carbonate-Sericite Schist</u>                      -core becomes pervasively carbonatized locally silic.                      -initially hematization appears to drop off                      -picks up again approx. 362.5                      -initially shearing is weak but increases with depth                      -initially sulphide content is low as well                      -not a good alt. zone, alteration is localized and spotty                      -sericitic alt. is weak</p> <p><u>Sample - 4410-1868 345-350</u>                      -minor shearing                      -pervasively carbonatized                      -tr py on fol.                      -minor hem. alt.</p> <p><u>Sample - 4410-1869 350-355</u>                      -carb                      -tr-1% py locally</p> <p><u>Sample - 4410-1870 355-358.5</u>                      -same as 1869</p> <p><u>Sample - 4410-1871 358.5-362.7</u>                      -shearing intensifies                      -carb                      -localized sect. of 5% py</p> <p>-361.16 minor <u>fault</u> clay</p> <p><u>Sample - 4410-1872 362.7-365</u>                      -hematized and sheared                      -carb                      -sericitic alt.                      -locally 2-5% py                      -qz-carb fract.                      -fol.</p>							
				34°		1868	345	350	5	
						1869	350	355	5	
						1870	355	358.5	3.5	
						1871	358.5	362.7	4.2	
				35°						
						1872	362.7	365	2.3	
				35°						



# David R. Bell Geological Services Inc.

## DIAMOND DRILL HOLE LOG

PROJECT 4410

Company Micham Exploration Inc.

HOLE No. 4410-87-2

Page 6 of 8

FOOTAGE		ROCK TYPE AND DESCRIPTION (alteration, structure, mineralization)	CORE ANGLES TO AXIS	% SULPHIDES	SAMPLE			
FROM	TO				NUMBER	FROM	TO	LENGTH
		<p><u>Sample - 4410-1873 365-370</u> -section of very weak alt. and mineralization</p> <p>-very little qz veining -large vein in zone located in hole 1 is no longer present</p>			1873	365	370	5.0
		<p><u>Sample - 4410-1874 370-373.4</u> -same as 1872</p> <p>-373.4 core becomes locally magnetic</p>			1874	370	373.4	3.4
		<p><u>Sample - 4410-1875 373.4-375.75</u> -loc. mag and silic. -hem -sheared -carb along fol. -1-2% py along fol.</p>	35°		1875	373.4	375.75	2.35
		<p><u>Sample - 4410-1876 375.75-378.85</u> -same as 1875</p>			1876	375.75	378.85	3.1
		<p><u>Sample - 4410-1877 378.85-382.15</u> -same as 1875 except hem. drops off -very locally magnetic</p>			1877	378.85	382.15	3.3
		<p><u>Sample - 4410-1878 382.15-385.55</u> -section of very weak alt. and shearing in zone - &lt;1% py</p>			1878	382.15	385.55	3.4
		<p><u>Sample - 4410-1879 385.55-388.4</u> -increase in alt., hem. -magnetic -locally py 1-2% -minor serc. alt.</p>			1879	385.55	388.4	2.85

# David R. Bell Geological Services Inc.

## DIAMOND DRILL HOLE LOG

 PROJECT 4410

 HOLE No. 4410-87-2

 Page 7 of     

 Company Micham Exploration Inc.

FOOTAGE		ROCK TYPE AND DESCRIPTION (alteration, structure, mineralization)	CORE ANGLES TO AXIS	* SULPHIDES	SAMPLE			
FROM	TO				NUMBER	FROM	TO	LENGTH
405	451	-389.65 <u>fault zone</u> 3" clay and brecc. -391 same -possibly may represent one large zone  <u>Sample - 4410-1880</u> 388.4-391.2 -alt. weakening -minor sericite loc. -tr- <1% py  <u>Sample - 4410-1881</u> 391.2-395 -loc. hem and serc. -carb -tr py  <u>Sample - 4410-1882</u> 395-400 -minor shearing -carb  <u>Sample - 4410-1883</u> 400-405 -same as 1882	35°					
		<u>Intermediate-Mafic Tuff</u> -biotite rich -both feldspar and qz fragments -some qz-carb veining -carb alt. -1% py  <u>Sample - 4410-1884</u> 425-430 -mafic tuff -carb -1% py  -this unit is different from that in hole 1 -no biotite banding						
		1880 388.4 391.2 2.8						
		1881 391.2 395 3.8						
		1882 395 400 5						
		1883 400 405 5						
		1884 425 430 5						

# David R. Bell Geological Services Inc.

## DIAMOND DRILL HOLE LOG

PROJECT 4410  
 HOLE No. 4410-87-2 Page 8 of 8

Company Micham Exploration Inc.

	FOOTAGE		ROCK TYPE AND DESCRIPTION (alteration, structure, mineralization)	CORE ANGLES TO AXIS	% SULPHIDES	SAMPLE				
	FROM	TO				NUMBER	FROM	TO	LENGTH	
			- ≈ 434.75-441.1 lamprophyre dike - mafic - 435.8-437 fault zone - chloritized - brecc. may be due to intrusion of dike - some brecc. at lower end of dike as well  End of Hole 451							

# David R. Bell Geological Services Inc.

## DIAMOND DRILL HOLE RECORD

Project - 4410

Company Micham Exploration Inc.

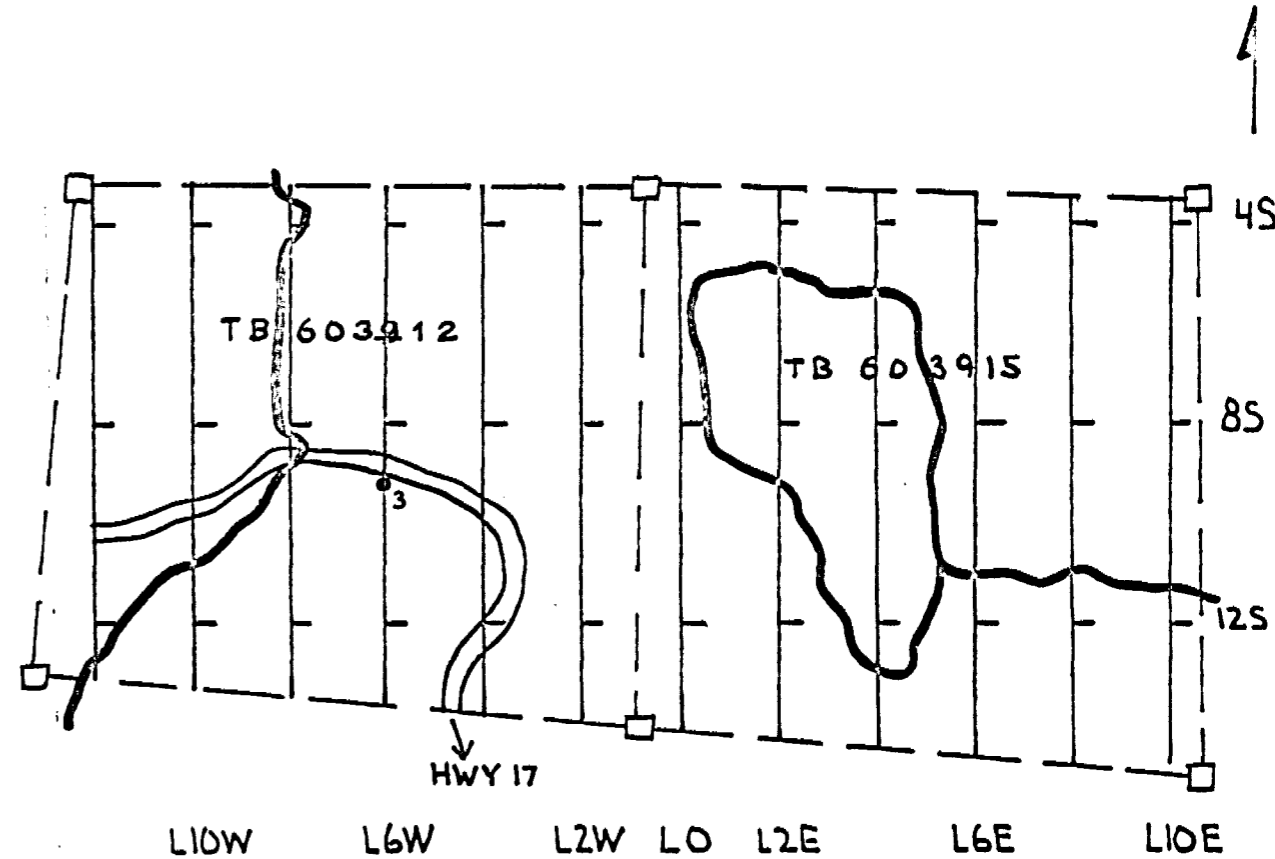
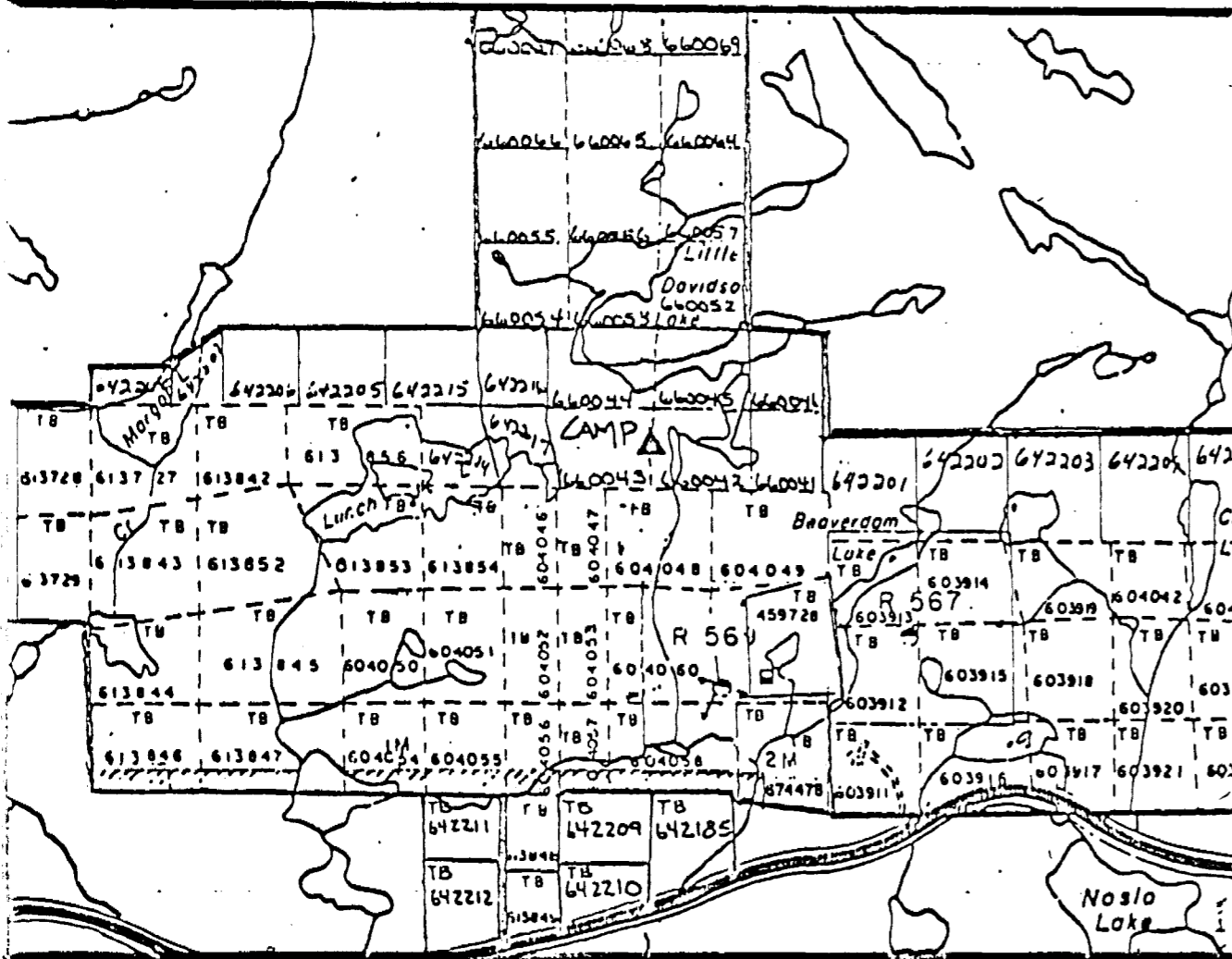
Hole No. 4410-87-3

LOCATION	DIP TEST		LEVEL	HORIZONTAL COMPONENT	DATE STARTED
AREA or TWP. Syne Township	FOOTAGE	ANGLE		300'	Jan. 29/87
		RECORDING	CORRECTED	VERTICAL COMPONENT	DATE FINISHED
CLAIM NO. TB603912	0		-50	363	Feb. 1/87
	150		-50	BEARING	LOGGED BY
	300		-50		
450		-50	LATITUDE	LENGTH	PURPOSE
NTS	UTM		DEPARTURE	472 BQ core	TOT. RECOVERY
			9+00S	CORE LOCATION	

DIAMOND DRILL HOLE LOCATION SKETCHES  
CLAIM MAP Scale: 1 inch to 1/2 mile

DIAMOND DRILL HOLE LOCATION  
WITH RESPECT TO CLAIM BOUNDARIES  
Scale: 1 inch to 400 feet

Signature *M. Simunovic*



# David R. Bell Geological Services Inc.

## DIAMOND DRILL HOLE LOG

PROJECT 4410

HOLE No. 4410-87-3

Page 1 of

Company Micham Exploration Inc.

FOOTAGE		ROCK TYPE AND DESCRIPTION (alteration, structure, mineralization)	CORE ANGLES TO AXIS	SULPHIDES	SAMPLE			
FROM	TO				NUMBER	FROM	TO	LENGTH
0	45	Overburden: casing left in hole						
45	111.6	<p><u>Basalt</u> - grey-green in colour                      -fine grained massive in texture                      -pyroxene rich                      -no carb                      -tr py                      -very little qz-carb veining</p> <p>55.45-63 - <u>Mafic Lapilli Tuff</u>                      -felsic and mafic fragments up to .1 of an inch in length                      -chloritic on slip planes                      -fine grained mafic matrix of chlorite and biotite, pyroxene?                      -upper contact                      -lower contact difficult to distinguish</p> <p>-at 63 back into basalt                      -65-70 highly silicified section in core                      -70 6" fault zone, clay and brecc.                      -silicification possibly due to fault</p> <p><u>Sample</u> - 4410-1885 65-70                      -silicified section in core                      -tr py</p> <p>-81.75-95.8 variably silicified section in core                      -somewhat appears to be silic. beds (chert)                      -may just be silicification parallel to foliation                      -some py along foliation locally                      -other than this only a trace of py exists                      -silic. may be due to proximity to granite</p> <p><u>Sample</u> - 4410-1886 81.75-85                      -as described above</p>	17°					
			50°					
					1885	65	70	5
					1886	81.75	85	3.25

# David R. Bell Geological Services Inc.

## DIAMOND DRILL HOLE LOG

PROJECT 4410

HOLE No. 4410-87-3

Page 2 of     

Company Micham Exploration Inc.

	FOOTAGE		ROCK TYPE AND DESCRIPTION (alteration, structure, mineralization)	CORE ANGLES TO AXIS	% SULPHIDES	SAMPLE			
	FROM	TO				NUMBER	FROM	TO	LENGTH
			<p>Sample - 4410-1887 85-90 -same as 1886</p> <p>Sample - 4410-1888 90-94 -same as 1886</p> <p>Sample - 4410-1889 94-95.8 -same as 1886 -weakening</p>			1887	85	90	5
			<p>101.3-105 <u>Mafic Lapilli Tuff</u> -actually 3 separate beds separated by 3 narrow units of basalt -each is carbonatized while the basalt is not -both felsic and mafic fragments -fragments of alkali feldspar as well -fine grained matrix (pyroxene rich) -biotitic fragments</p>			1888	90	94	4
			<p>101.3-105 <u>Mafic Lapilli Tuff</u> -actually 3 separate beds separated by 3 narrow units of basalt -each is carbonatized while the basalt is not -both felsic and mafic fragments -fragments of alkali feldspar as well -fine grained matrix (pyroxene rich) -biotitic fragments</p>			1889	94	95.8	1.8
	111.6	129	<p><u>Granodiorite</u> -silicification of basalt above contact -contact variable approx. 90° -phenocrysts of feldspar and quartz up to .2 of an inch -also biotite and chlorite in a fine grained qz-rich matrix -alkali feldspar in matrix as well -lower contact 129</p>	90°					
	129	149	<p><u>Basalt</u> - amphibolitized, probably due to intursion of the granodiorite -chloritic on slip planes -tr py -leucoxene growths</p>	25°					

# David R. Bell Geological Services Inc.

## DIAMOND DRILL HOLE LOG

PROJECT 4410

HOLE No. 4410-87-3

Page 3 of 9

 Company Micham Exploration Inc.

	FOOTAGE		ROCK TYPE AND DESCRIPTION (alteration, structure, mineralization)	CORE ANGLES TO AXIS	% SULPHIDES	SAMPLE			
	FROM	TO				NUMBER	FROM	TO	LENGTH
	149	174.35	<u>Granodiorite</u> -same as described 111.6-129 -contact -some epidote on fractures -lower contact	30° 40°					
	174.35	205.7	<u>Intermediate - Mafic Lapilli Tuff</u> -some felsic fragments in a biotite rich matrix -may be part of a flow which has been highly altered by the granodiorite -appears in some sections that vesicles have developed						
	205.7	227	<u>Granodiorite</u> - same as described 111.6-129 feet						
	227	258	<u>Basalt</u> - initial 20 feet is coarser grained and amphibolitized due to contact with granodiorite -after this core is fine grained, massive grey-green in colour -some leucoxene growths present -pyroxene rich -chloritic on slip planes -tr py -minor qz-carb veining						
	258	269	<u>Granodiorite</u> - same as described 111.6-129						
	269	331.85	<u>Basalt</u> - same as 227-258						
	331.85	368.3	<u>Mafic Tuff and Carbonate Sericite Schist</u> -initially brown biotite banding can be seen with some bands of silic. and seric. -felsic fragments and some mafic in a mafic matrix -some localized sections of carb-seric. schist -tr-2% py along fol. -some chloritic banding -fol. or beds -tuff locally carb. as well	60°					

# David R. Bell Geological Services Inc.

## DIAMOND DRILL HOLE LOG

 PROJECT 4410

 HOLE No. 4410-87-3

 Page 4 of 5

 Company Micham Exploration Inc.

	FOOTAGE		ROCK TYPE AND DESCRIPTION (alteration, structure, mineralization)	CORE ANGLES TO AXIS	% SULPHIDES	SAMPLE			
	FROM	TO				NUMBER	FROM	TO	LENGTH
			<u>Sample - 4410-1890</u> 331.85-335 -as described above			1890	331.85	335	3.15
			<u>Sample - 4410-1891</u> 335-340 -same as 1890			1891	335	340	5
			<u>Sample - 4410-1892</u> 340-345 -same as 1890			1892	340	345	5
			<u>Sample - 4410-1893</u> 345-349.85 -same as 1890  -tuff is coarser grained and carbonatized now -tr- 1% py -slightly sericitic -fol. vaires from 30-50°	30-50°		1893	345	349.85	4.85
			<u>Sample - 4410-1894</u> 349.85-355 -as described above			1894	349.85	355	5.15
			<u>Sample - 4410-1895</u> 355-360 -same as 1894			1895	355	360	5
			<u>Sample - 4410-1896</u> 360-365 -same as 1894			1896	360	365	5
			<u>Sample - 4410-1897</u> 365-368.3 -same as 1894			1897	365	368.3	3.3
	368.3	432.85	<u>Carbonate-Sericite Schist</u> -sheared -highly sericitized -carb. varies -beige in colour -muddy in appearance -minor qz-veining as well as large veins throughout						



# David R. Bell Geological Services Inc.

## DIAMOND DRILL HOLE LOG

 PROJECT 4410

 HOLE No. 4410-87-3

 Page 5 of 9

 Company Micham Exploration Inc.

	FOOTAGE		ROCK TYPE AND DESCRIPTION (alteration, structure, mineralization)	CORE ANGLES TO AXIS	% SULPHIDES	SAMPLE				
	FROM	TO				NUMBER	FROM	TO	LENGTH	
			-2-5% py throughout -locally less mineralization -some qz-veins contain gelena and sphalerite, as well as chalcopyrite -fol. varies but 55° 370'  <u>Sample - 4410-1898 368.3-372.4</u> -sericitized and carb -2-5% py  <u>Sample - 4410-1899 372.4-375.6</u> -weaker section of alt. -tr py  <u>Sample - 4410-1900 375.6-380.6</u> -same as 1898 -contains some .5 inch qz-veins which contain sphalerite and gelena -some chalcopyrite as well  <u>Sample - 4410-1901 380.6-384.6</u> -same as 1898 -some massive blebs of py  <u>Sample - 4410-1902 384.6-386.45</u> -qz-vein -tr py (blebs) -some gelena  <u>Sample - 4410-1903 386.45-390.85</u> -same as 1898 -fol.  <u>Sample - 4410-1904 390.85-394.9</u> -same as 1898	55°						
						1898	368.3	372.4	4.1	
						1899	372.4	375.6	3.2	
						1900	375.6	380.6	5.0	
						1901	380.6	384.6	4.0	
						1902	384.6	386.45	1.85	
						1903	386.45	390.85	4.4	
						1904	390.85	394.9	4.05	

# David R. Bell Geological Services Inc.

## DIAMOND DRILL HOLE LOG

 PROJECT 4410

 HOLE No. 4410-87-3

 Page 6 of 9

 Company Micham Exploration Inc.

FOOTAGE		ROCK TYPE AND DESCRIPTION (alteration, structure, mineralization)	CORE ANGLES TO AXIS	* SULPHIDES	SAMPLE			
FROM	TO				NUMBER	FROM	TO	LENGTH
		Sample - 4410-1905 394.9-396.85 -qz-vein -py and chalcopyrite along fractures massive			1905	394.9	396.85	1.95
		Sample - 4410-1906 396.85-400.85 -same as 1898			1906	396.85	400.85	4.0
		Sample - 4410-1907 400.85-403.3 -same as 1898 -fol.	55-65°		1907	400.85	403.3	2.45
		403.3-409.2 qz-vein -appears barren -possible dolomite						
		Sample - 4410-1908 403.3-405 -qz-vein -barren			1908	403.3	405	1.7
		Sample - 4410-1909 405-409.2 -same as 1908  -still carbonate-sericite schist but core has now become slightly hematized locally, as well as magnetic			1909	405	409.2	4.2
		Sample - 4410-1910 409.2-414.3 -carb and serc. -minor hem. -magnetic -2-5% py locally average 1%			1910	409.2	414.3	5.1
		Sample - 4410-1911 414.3-419.05 -same as 1910 -fol. $\approx$ 65°	65°		1911	414.3	419.05	4.75
		417.15 <u>fault</u> clay and brecc. $\approx$ 90°						

# David R. Bell Geological Services Inc.

## DIAMOND DRILL HOLE LOG

PROJECT 4410

Company Micham Exploration Inc.

HOLE No. 4410-87-3

Page 7 of 4

	FOOTAGE		ROCK TYPE AND DESCRIPTION (alteration, structure, mineralization)	CORE ANGLES TO AXIS	% SULPHIDES	SAMPLE			
	FROM	TO				NUMBER	FROM	TO	LENGTH
			<p>Sample - 4410-1912 419.05-423.35 -same as 1910</p>			1912	419.05	423.35	4.3
			<p>Sample - 4410-1913 423.35-426 -qz-vein -massive py and cpy present</p>			1913	423.35	426	2.65
			<p>Sample - 4410-1914 426-428 -hematized and sericitized -narrow qz-veins -1-2% py in fract.</p>			1914	426	428	2
			<p>Sample - 4410-1915 428-432.85 -minor hem. loc. -seric. loc. mag -1-3% py -carb</p>			1915	428	432.85	4.85
	432.85	460.85	<p><u>Mafic Tuff &amp; Carbonate Sericite Schist</u> -same as described 331.85-368.3</p>						
			<p>Sample - 4410-1916 432.85-435 -mafic tuff carb -tr py</p>			1916	432.85	435	2.15
			<p>Sample - 4410-1917 435-439.4 -sheared tuff, loc. mag -carb -minor serc. -1-2% py locally</p>			1917	435	439.4	4.4
			<p>-435.6 fault clay seam and brecc. major</p>						

# David R. Bell Geological Services Inc.

## DIAMOND DRILL HOLE LOG

PROJECT 4410

Company Micham Exploration Inc.

HOLE No. 4410-87-3 Page 8 of 8

	FOOTAGE		ROCK TYPE AND DESCRIPTION (alteration, structure, mineralization)	CORE ANGLES TO AXIS	% SULPHIDES	SAMPLE			
	FROM	TO				NUMBER	FROM	TO	LENGTH
			<p><u>Sample - 4410-1918</u> 439.4-443.6                      -shear loc. mag                      -carb                      -minor serc.                      - &lt;1% py</p> <p>-above fault seems to be present in all holes drilled                      -may be the cause of the mineralization</p>			1918	439.4	443.6	4.2
			<p><u>Sample - 4410-1919</u> 443.6-445.5                      -sheared and carb. tuff                      -minor serc.                      -magnetic</p>			1919	443.6	445.5	1.9
			<p><u>Sample - 4410-1920</u> 445.5-450.5                      -carb tuff                      -magnetic</p>			1920	445.5	450.5	5
			<p><u>Sample - 4410-1921</u> 450.5-452                      -same as 1920</p>			1921	450.5	452	1.5
			<p><u>Sample - 4410-1922</u> 452-454.35                      -carb, magnetic                      -minor seric.                      -1% py</p>			1922	452	454.35	2.35
			<p><u>Sample - 4410-1923</u> 454.35-457.3                      -hem. and serc.                      -carb                      - &lt;1% py                      -1% magnetic</p>			1923	454.35	457.3	2.95

# David R. Bell Geological Services Inc.

## DIAMOND DRILL HOLE LOG

PROJECT 4410

Company Micham Exploration Inc.

HOLE No. 4410-87-3 Page 9 of 9

	FOOTAGE		ROCK TYPE AND DESCRIPTION (alteration, structure, mineralization)	CORE ANGLES TO AXIS	% SULPHIDES	SAMPLE			
	FROM	TO				NUMBER	FROM	TO	LENGTH
			<u>Sample - 4410-1924</u> 457.3-459.7 -alt. dying -serc. and carb - <1% py -1% mag			1924	457.3	459.7	2.4
			<u>Sample - 4410-1925</u> 459.7-460.85 -weak shearing -tr py -magnetic and carb			1925	459.7	460.85	1.15
	460.85	472	<u>Mafic Tuff</u> -back into mafic tuff -magnetic  End of Hole 472'						



# David R. Bell Geological Services Inc.

## DIAMOND DRILL HOLE LOG

 PROJECT 4410

 HOLE No. 4410-87-4

 Page 1 of 1

 Company Micham Exploration Inc.

FOOTAGE		ROCK TYPE AND DESCRIPTION (alteration, structure, mineralization)	CORE ANGLES TO AXIS	% SULPHIDES	SAMPLE			
FROM	TO				NUMBER	FROM	TO	LENGTH
0	35	Overburden: casing left in hole						
35	77.9	Basalt - fine grained, green -massive texture -amphibolitized -pyroxene rich -chloritic on slip planes - $\approx$ 71 fol. 35°	35°					
77.9	177.1	Intermediate-Mafic Lapilli Tuff -felsic and mafic fragments in a mafic-intermediate matrix rich in qz and biotite  Sample - 4410-1926 88.9-93.9 -slightly silic. -potassic alt. -tr py -shr.  -98.2 fault clay and brecc. -qz-carb veining in this area (major) -minor slickensides  - $\approx$ 100 feet tuff coarsens -106-113 potassic alt. -110.3 minor fault  -117.7 fault major clay and breccia -151.75 clay and brecc. fault minor -152.7 clay and brecc. fault minor	25°					
					1926	88.9	93.9	5.0
177.1	421.1	Basalt - green, massive in texture, medium grained -amphibolitized -not a real definite contact just grades -226-236 well developed laths of plagioclase	67° 35°					

# David R. Bell Geological Services Inc.

## DIAMOND DRILL HOLE LOG

 PROJECT 4410

 HOLE No. 4410-87-4

 Page 2 of     

 Company Micham Exploration Inc.

FOOTAGE		ROCK TYPE AND DESCRIPTION (alteration, structure, mineralization)	CORE ANGLES TO AXIS	% SULPHIDES	SAMPLE				
FROM	TO				NUMBER	FROM	TO	LENGTH	
		-236-246 localized sections of massive pyrrhotite -some cpy in fractures here -246-248 garnets present  Sample - 4410-1927 245.7-247.7 -garnets present -po locally 50% -loc. carb  -may be some minor units of mafic ash tuff present as well  -341-353.3 Mafic Tuff -fine grained biotite and chlorite rich -mafic and felsic frags. -biotitic banding -fol. 346 45°  -after this unit basalt is much finer grained -very little qz-carb veining							
421.1	528.5	<u>Carbonate-Sericite Schist</u> -alteration is not as strong as hole 3 above this one -carb and sericite alt. present -highly sheared -locally hematized -magnetite present -mineralization varies throughout but ~1-3% -qz-veining present -appears to be an alt. of the basalt  Sample - 4410-1928 421.1-426 -locally sericitic -tr py -minor carb	45°			1927	245.7	247.7	2.0
						1928	421.1	426	4.9



# David R. Bell Geological Services Inc.

## DIAMOND DRILL HOLE LOG

 PROJECT 4410

 Company Micham Exploration Inc.

 HOLE No. 4410-87-4 Page 3 of    

	FOOTAGE		ROCK TYPE AND DESCRIPTION (alteration, structure, mineralization)	CORE ANGLES TO AXIS	% SULPHIDES	SAMPLE			
	FROM	TO				NUMBER	FROM	TO	LENGTH
			Sample - 4410-1929 426-431 -loc. serc. - <1% py -carb			1929	426	431	5
			Sample - 4410-1930 431-432.55 -slightly serc. -carb - <1% py loc. 2-5% -fol. 432 45° varies locally			1930	431	432.55	1.55
			Sample - 4410-1931 432.55-435.15 -hematitic and potassic alt. -highly magnetic locally -magnetite along fol. -contains a section of granite -≈1% py -carb			1931	432.55	435.15	2.6
			Sample - 4410-1932 435.15-438.8 -sheared -1-2% py -1-2% py in clots -carb -contains some highly sericitic sections			1932	435.15	438.8	3.65
			Sample - 4410-1933 438.8-442.6 -highly sericitized section -fine diss. magnetite -highly hematitic locally - <1% py			1933	438.8	442.6	3.8
			Sample - 4410-1934 442.6-447.3 -highly sericitic -carb -diss. magnetite			1934	442.6	447.3	4.7

# David R. Bell Geological Services Inc.

## DIAMOND DRILL HOLE LOG

 PROJECT 4410

 Company Micham Exploration Inc.

 HOLE No. 4410-87-4

 Page 5 of 7

FOOTAGE		ROCK TYPE AND DESCRIPTION (alteration, structure, mineralization)	CORE ANGLES TO AXIS	% SULPHIDES	SAMPLE			
FROM	TO				NUMBER	FROM	TO	LENGTH
		Sample - 4410-1940 462.25-466 -minor sericite -carb -~1% py -diss. mag -locally hematized along fol.	45°		1940	462.25	466	3.75
		Sample - 4410-1941 466-470.15 -same as 1940		1941	466	470.15	4.15	
		Sample - 4410-1942 470.15-473.5 -same as 1940		1942	470.15	473.5	3.35	
		Sample - 4410-1943 473.5-475.4 -qz vein -appears to be barren -some py assoc. with inclusions of host		1943	473.5	475.4	1.9	
		Sample - 4410-1944 475.4-477.4 -irregular qz-veining -locally 10% py assoc. with host -carb -hematite and mag locally		1944	475.4	477.4	2	
		Sample - 4410-1945 477.4-482.3 -same as 1940		1945	477.4	482.3	4.9	
		Sample - 4410-1946 482.3-486 -same as 1940		1946	482.3	486	3.7	
		Sample - 4410-1947 486-491 -same as 1940		1947	486	491	5	
		Sample - 4410-1948 491-496 -same as 1940 -fol.	40°	1948	491	496	5	

# David R. Bell Geological Services Inc.

## DIAMOND DRILL HOLE LOG

 PROJECT 4410

 Company Micham Exploration Inc.

 HOLE No. 4410-87-4 Page 6 of 6

FOOTAGE		ROCK TYPE AND DESCRIPTION (alteration, structure, mineralization)	CORE ANGLES TO AXIS	% SULPHIDES	SAMPLE			
FROM	TO				NUMBER	FROM	TO	LENGTH
		-494.25 fault, clay seam and brecc.	55°					
		<u>Sample - 4410-1949 496-499.7</u> -only minor sericite -loc. sections of magnetite up to 3 inches in width -carb only assoc. with these sections -1-2% py assoc. with these sections as well			1949	496	499.7	3.7
		<u>Sample - 4410-1950 499.7-505.15</u> -same as 1949			1950	499.7	505.15	5.45
		<u>Sample - 4410-1951 505.15-508.6</u> -silic. and loc. carb (not in the areas of intense silic., here only fractures) -slightly mag locally -minor py along fol. -hem.			1951	505.15	508.6	3.45
		<u>Sample - 4410-1952 508.6-512.75</u> -qz-veining barren -minor serc. and carb -tr py			1952	508.6	512.75	4.15
		-509.3 - <u>fault</u> minor clay and brecc. -509.7 - same	60°					
		<u>Sample - 4410-1953 512.75-516.5</u> -minor shear -loc. carb -loc. section of hem. and mag -tr py			1953	512.75	516.5	3.75
		<u>Sample - 4410-1954 516.5-520.75</u> -minor shear -carb along fol. -loc. sericite			1954	516.5	520.75	4.25

# David R. Bell Geological Services Inc.

## DIAMOND DRILL HOLE LOG

PROJECT 4410

Company Micham Exploration Inc.

HOLE No. 4410-87-4

Page 7 of     

	FOOTAGE		ROCK TYPE AND DESCRIPTION (alteration, structure, mineralization)	CORE ANGLES TO AXIS	% SULPHIDES	SAMPLE			
	FROM	TO				NUMBER	FROM	TO	LENGTH
			<u>Sample - 4410-1955</u> 520.75-526 -minor shearing -biotite banding -tr py -loc. carb			1955	520.75	526	5.25
			<u>Sample - 4410-1956</u> 526-528.5 -same as 1955			1956	526	528.5	2.5
	528.5	546	<u>Basalt - fine grained</u> -grey-green -qz-carb veining present -some lighter more felsic sections which may be vesicles or variolites  End of Hole 546'						

# David R. Bell Geological Services Inc.

## DIAMOND DRILL HOLE RECORD

Project - 4410

Company Micham Exploration Inc.

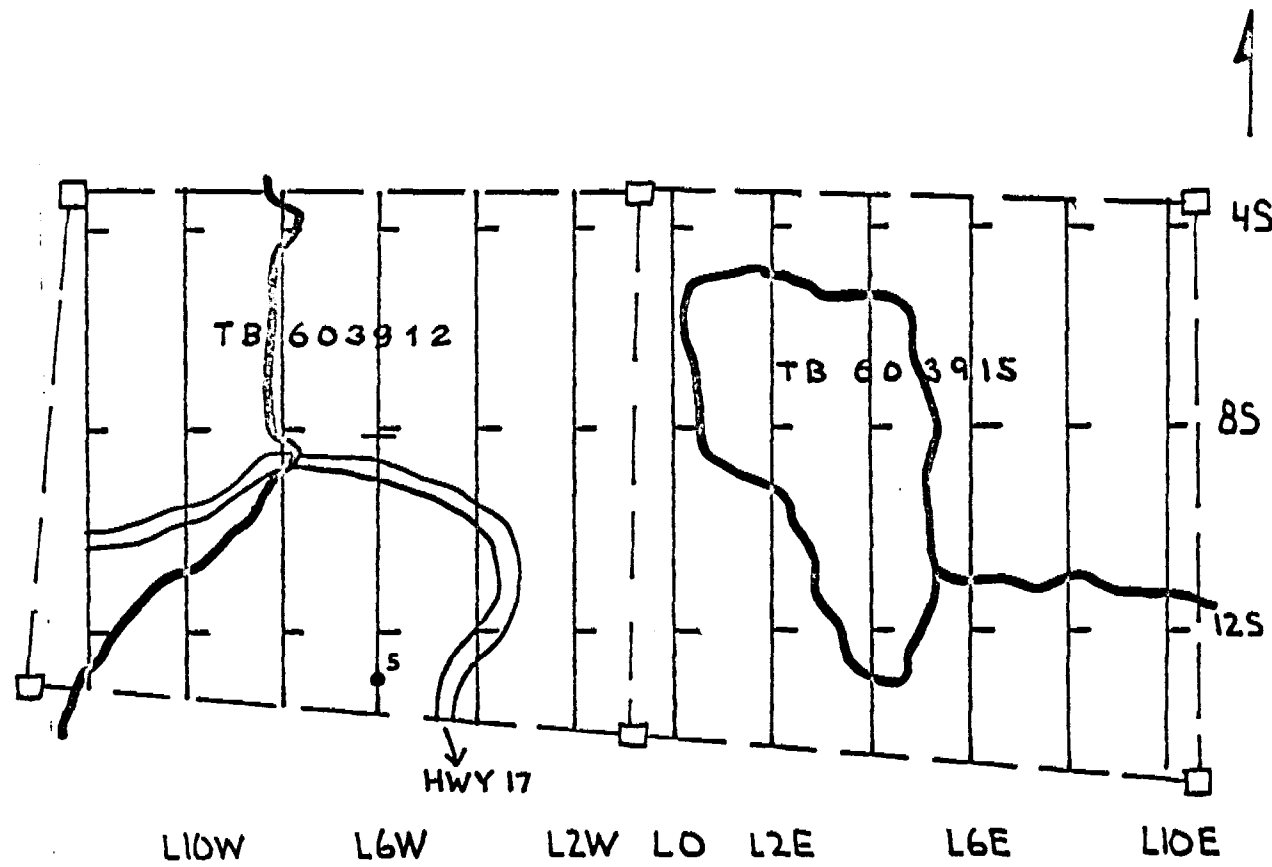
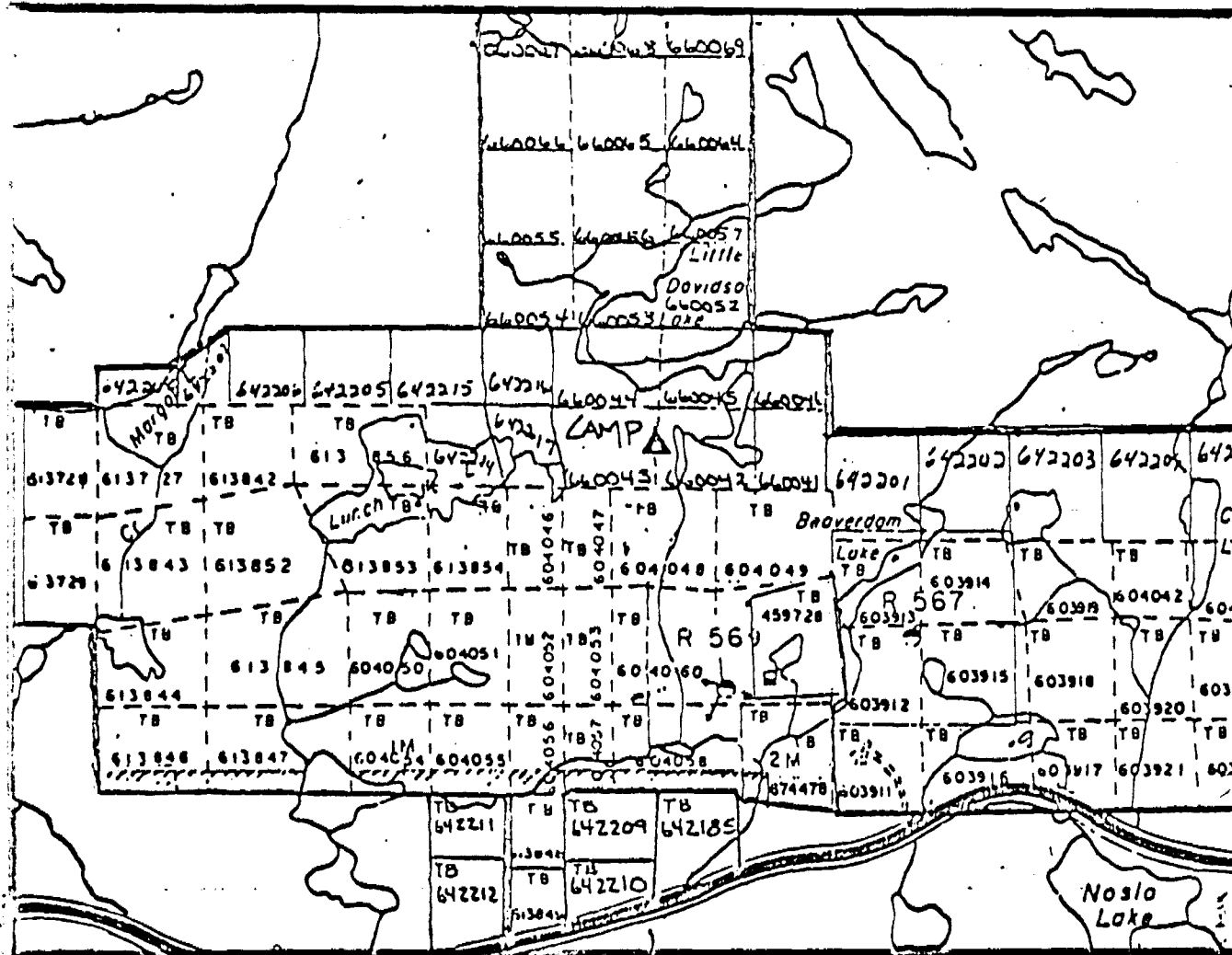
Hole No. 4410-87-5

LOCATION	DIP TEST		LEVEL	HORIZONTAL COMPONENT	DATE STARTED	
	FOOTAGE	ANGLE				
AREA or TWP Syine Township		CLAIM NO. TB603912	RECORDING	CORRECTED	VERTICAL COMPONENT	DATE FINISHED
	0			-60	494	Feb. 3/87
	150			-60	823	Feb. 7/87
	300			-60	0	LOGGED BY M. Simunovic
	450			-60	BEARING	
600		-60	LATITUDE	1006 BQ core	PURPOSE	
750		-60 -60	L6W	CORE LOCATION	TOT. RECOVERY	
NTS	UTM		DEPARTURE	13+00S		

DIAMOND DRILL HOLE LOCATION SKETCHES 900  
CLAIM MAP Scale: 1 inch to 1/4 mile

DIAMOND DRILL HOLE LOCATION WITH RESPECT TO CLAIM BOUNDARIES  
Scale: 1 inch to 400 feet

Signature *Miche Simunovic*



# David R. Bell Geological Services Inc.

## DIAMOND DRILL HOLE LOG

PROJECT 4410

HOLE No. 4410-87-5 Page 1 of 7

Company Micham Exploration Inc.

FOOTAGE		ROCK TYPE AND DESCRIPTION (alteration, structure, mineralization)	CORE ANGLES TO AXIS	% SULPHIDES	SAMPLE			
FROM	TO				NUMBER	FROM	TO	LENGTH
0	17	Overburden: casing left in hole						
17	29.15	<u>Mafic Tuff</u> - may possibly be a recrystallized metamorphosed basalt by the intrusion of granodiorite -biotite, pyroxene rich -minor amphibole -minor felsic component -very grainy						
29.15	34.85	<u>Granodiorite</u> -same as previous holes						
34.85	193.1	<u>Basalt</u> - initial foot is very similar to the above tuff -just grades into a massive uniform fine grained basalt -green, fine grained -46-48 minor intrusion of granodiorite -localized sections of epidotization also hematization from 49 feet on -53.4 6" section where euhedral laths of plagioclase are present -68-69 feet section of epidotization and brecciation here -this may represent an area of flow top						
		<u>Sample</u> - 4410-1957 60-65 -minor hem. -epidotization loc. -tr py			1957	60	65	5.0
		<u>Sample</u> - 4410-1958 65-70 -same as 1957			1958	65	70	5.0
		<u>Sample</u> - 4410-1959 70-75 -same as 1957			1959	70	75	5.0
		<u>Sample</u> - 4410-1960 75-80 -same as 1957			1960	75	80	5.0

# David R. Bell Geological Services Inc.

## DIAMOND DRILL HOLE LOG

PROJECT 4410

Company Micham Exploration Inc.

HOLE No. 4410-87-5

Page 2 of 7

	FOOTAGE		ROCK TYPE AND DESCRIPTION (alteration, structure, mineralization)	CORE ANGLES TO AXIS	% SULPHIDES	SAMPLE				
	FROM	TO				NUMBER	FROM	TO	LENGTH	
			<p><u>Sample - 4410-1961 80-85</u> -same as 1957</p> <p>-≈90-102.2 large fault zone -several sections of brecciation and clay -hematization and epidote throughout -foliated here 101</p> <p><u>Sample - 4410-1962 85-90</u> -same as 1957</p> <p><u>Sample - 4410-1963 90-95</u> -epidotization and hematization -minor carb -fault zone brecc. -tr py</p> <p><u>Sample - 4410-1964 95-100</u> -same as 1963</p> <p><u>Sample - 4410-1965 100-105</u> -same as 1963</p> <p><u>Sample - 4410-1966 105-110</u> -same as 1957</p> <p><u>Sample - 4410-1967 110-115</u> -same as 1957</p> <p><u>Sample - 4410-1968 115-120</u> -same as 1957</p> <p><u>Sample - 4410-1969 120-125</u> -same as 1957 -garnets present in this section</p> <p>-after this point hematization and epidotization dropp off -garnets present till ≈ 131 -still minor alt. locally</p>	53°						
						1961	80	85	5.0	
						1962	85	90	5.0	
						1963	90	95	5.0	
						1964	95	100	5.0	
						1965	100	105	5.0	
						1966	105	110	5.0	
						1967	110	115	5.0	
						1968	115	120	5.0	
						1969	120	125	5.0	

# David R. Bell Geological Services Inc.

## DIAMOND DRILL HOLE LOG

PROJECT 4410

Company Micham Exploration Inc.

HOLE No. 4410-87-5

Page 3 of     

	FOOTAGE		ROCK TYPE AND DESCRIPTION (alteration, structure, mineralization)	CORE ANGLES TO AXIS	% SULPHIDES	SAMPLE			
	FROM	TO				NUMBER	FROM	TO	LENGTH
			<p>Sample - 4410-1970 161-165.5</p> <p>-hematization and epidotization of core</p> <p>-tr py</p> <p>-fol. 175</p> <p>-still minor epidote and hem. throughout core locally</p> <p>-a lot of qz-carb intrusion and minor alteration</p> <p>-probably due to the large fault present above and the proximity of this hole to the contact of the granitic porphyry to the south</p>	50°		1970	161	165.5	4.5
193.1	800.95		<p><u>Mafic Tuff</u></p> <p>-6" section of brecc. at top</p> <p>-rich in biotite and chlorite</p> <p>-very grainy texture</p> <p>-massive not foliated</p> <p>-very little qz-carb veining</p> <p>-minor crystals of magnetite present</p> <p>-254.45-259 shearing present</p> <p>-fault at 258.8 qz-carb vein here</p> <p>-clay and brecciation</p> <p>-293.7-304.2 fault zone clay and brecciation</p>	55°					
			<p>Sample - 4410-1971 291.5-293.7</p> <p>-brecc. and hem., silic.</p> <p>-tr py</p> <p>-possible cherty beds</p> <p>-fol.</p>	60°		1971	291.5	293.7	2.2
			<p>Sample - 4410-1972 293.7-297.9</p> <p>-brecc. and hem.</p> <p>-car. in fractures</p> <p>-tr py</p>			1972	293.7	297.9	4.2



# David R. Bell Geological Services Inc.

## DIAMOND DRILL HOLE LOG

PROJECT 4410

Company Micham Exploration Inc.

HOLE No. 4410-87-5 Page 4 of 7

	FOOTAGE		ROCK TYPE AND DESCRIPTION (alteration, structure, mineralization)	CORE ANGLES TO AXIS	% SULPHIDES	SAMPLE			
	FROM	TO				NUMBER	FROM	TO	LENGTH
			-315 minor fault, clay and brecc. -≈346 tuff becomes very fine grained -still a grainy texture -also is locally magnetic -weak foliation  Sample - 4410-1973 400.8-402.3 -minor hem. -fol. felsic sections -tr py  -≈426 gets coarser again -magnetic -sections in core of minor hematization -484.05-487.1 intermediate tuff in core -lapilli sized fragments both felsic and mafic  -≈476 coarsening ends -now fine again with local coarsening eg., 510.5-512 -some local minor hematized sections 486-516 -core is still slightly magnetic -assoc. with this is minor felsic alt. epidotization -down to 576 core is still slightly magnetic locally -some felsic sections which may be larger fragments -610.5 fault (minor) clay and brecc. -magnetic nature ends -621-627.5 biotite banding -felsic alt. -tr py -fol.  Sample - 4410-1974 621-626 -biotitic banding -felsic bands -tr py	55°		1973	400.8	402.3	1.5
				60°					
				40°					
				40°		1974	621	626	5.0

# David R. Bell Geological Services Inc.

## DIAMOND DRILL HOLE LOG

PROJECT 4410

Company Micham Exploration Inc.

HOLE No. 4410-87-5

Page 5 of     

	FOOTAGE		ROCK TYPE AND DESCRIPTION (alteration, structure, mineralization)	CORE ANGLES TO AXIS	SULPHIDES	SAMPLE				
	FROM	TO				NUMBER	FROM	TO	LENGTH	
			-648.2 - fault minor clay and brecc. -no angle possible core is broken  Sample - 4410-1975 731.7-733.85 -silic. hem. -tr py  Sample - 4410-1976 747.35-751.45 -silic. -loc. serc. and Hem. -qz-vein -tr py  -≈ 716 basalt? -726 brown biotite banding present -fol. 776' -777-800.95 massive section appears to be a basalt -no alteration at all -very fine grained	40°						
	800.95	824.8	<u>Carbonate-Sericite Schist</u> -sheared -alteration is very weak -carb and sericite very locally - <1% py -minor hematization locally -slightly magnetic locally  Sample - 4410-1977 800.95-804.5 -carbonatized -local hematization -slightly sericitic -tr py			1977	800.95	804.5	3.55	

# David R. Bell Geological Services Inc.

## DIAMOND DRILL HOLE LOG

PROJECT 4410

Company Micham Exploration Inc.

HOLE No. 4410-87-5 Page 6 of 7

	FOOTAGE		ROCK TYPE AND DESCRIPTION (alteration, structure, mineralization)	CORE ANGLES TO AXIS	% SULPHIDES	SAMPLE			
	FROM	TO				NUMBER	FROM	TO	LENGTH
			<p><u>Sample - 4410-1978</u> 804.5-808.15                      -carb in fract.                      -local weak hem.                      - &lt;1% py</p>			1978	804.5	808.15	3.65
			<p><u>Sample - 4410-1979</u> 808.15-811.35                      -same as 1978</p>			1979	808.15	811.35	3.2
			<p><u>Sample - 4410-1980</u> 811.35-813.2                      -sheared                      -carb in fract.                      -tr py</p>			1980	811.35	813.2	1.85
			<p>-813.2-814.3 fault zone clay and brecc.</p>	40°					
			<p><u>Sample - 4410-1981</u> 813.2-816.5                      -carbonatized                      -weakly sericitized                      -tr py</p>			1981	813.2	816.5	3.3
			<p><u>Sample - 4410-1982</u> 816.5-818.1                      -carbonatized                      -highly hematized                      -minor sericite                      -tr py</p>			1982	816.5	818.1	1.6
			<p><u>Sample - 4410-1983</u> 818.1-820.05                      -carbonatized                      -minor hem and seric.                      -tr py</p>			1983	818.1	820.05	1.95
			<p><u>Sample - 4410-1984</u> 820.05-824.8                      -minor silic. and hem. assoc. with fract.</p>			1984	820.05	824.8	4.75

# David R. Bell Geological Services Inc.

## DIAMOND DRILL HOLE LOG

PROJECT 4410

Company Micham Exploration Inc.

HOLE No. 4410-87-5

Page 7 of     

FOOTAGE		ROCK TYPE AND DESCRIPTION (alteration, structure, mineralization)	CORE ANGLES TO AXIS	% SULPHIDES	SAMPLE					
FROM	TO				NUMBER	FROM	TO	LENGTH		
824.8	1006	<p>Mafic Tuff - same as described above except a lot of biotite banding present now</p> <p>Sample - 4410-1985 847.2-851 -shearing -biotitic alteration -minor sericite -tr py</p> <p>Sample - 4410-1986 851-855.55 -same as 1985</p> <p>Sample - 4410-1987 855.55-861.55 -same as 1986</p> <p>-felsic bands present as well</p> <p>-912.15-916.95 lamprophyre dike -mafic -chloritic on slip planes -highly magnetic -chloritic clots -some plagioclase phenocrysts as well -talcose on contacts</p> <p>Sample - 4410-1988 921.75-926 -sheared -biotite banding -some qz-carb veining</p> <p>Sample - 4410-1989 926-931 -same as 1988</p> <p>-960' fol.</p> <p>-no change to end of hole -End of Hole 1006'</p>	45°							
							1985	847.2	851	3.8
							1986	851	855.55	4.55
							1987	855.55	861.55	6.0
							1988	921.75	926	4.25
							1989	926	931	5



# David R. Bell Geological Services Inc.

## DIAMOND DRILL HOLE LOG

 PROJECT 4410

 Company Micham Exploration Inc.

 HOLE No. 4410-87-6 Page 1 of 8

	FOOTAGE		ROCK TYPE AND DESCRIPTION (alteration, structure, mineralization)	CORE ANGLES TO AXIS	% SULPHIDES	SAMPLE					
	FROM	TO				NUMBER	FROM	TO	LENGTH		
	0	22	Overburden: casing left in hole								
	22	70.4	Basalt - fine grained -massive green -garnets present -initial 40' is highly ground and blocky - ≈ 55-59 mafic tuff contacts ground								
	70.4	155.8	Carbonate-Sericite Schist -silicified and sericitized -very minor carb -tr to 1% diss. py -initial 25 feet is weakly altered -locally alt. is intense -py and po present locally 2% -some very weak to relatively unaltered sections in first 25 feet -local hematization in this section  Sample - 4410-2051 69.4-71.75 -silic. -sericitized locally -local hem. -po and py locally 2-3%  -appears bedded -some silicified sections look like chert beds -many sections still look like an altered basalt  Sample - 4410-2052 71.75-75 -same as 2051  Sample - 4410-2053 75-80 -same as 2051  Sample - 4410-2054 80-85 -same as 2051	60°							
						2051	69.4	71.75	2.35		
						2052	71.75	75	3.25		
						2053	75	80	5.0		
						2054	80	85	5.0		

# David R. Bell Geological Services Inc.

## DIAMOND DRILL HOLE LOG

PROJECT 4410

HOLE No. 4410-87-6 Page 2 of     

Company Micham Exploration Inc.

	FOOTAGE		ROCK TYPE AND DESCRIPTION (alteration, structure, mineralization)	CORE ANGLES TO AXIS	% SULPHIDES	SAMPLE			
	FROM	TO				NUMBER	FROM	TO	LENGTH
			<p><u>Sample - 4410-2055 85-90</u> -this section appears to be a silic. basalt -no shearing of fol.</p>			2055	85	90	5.0
			<p><u>Sample - 4410-2056 90-95</u> -same as 2055 except minor fractures present here with tiny halos of alteration</p> <p>-95-128.6 intense silic. and seric. -little to no carbonatization -tr to &lt;1% py diss. -minor lamprophyre dikes present -some possible cherty sections -very local hematitic alt.; actually confined locally 100-103.8 -in some sections silic. appears to be assoc, with fracturing -does not appear to be any po in this section</p>			2056	90	95	5.0
			<p><u>Sample - 4410-2057 95-100</u> -silic. and seric. -tr to &lt;1% py in fract.</p>			2057	95	100	5.0
			<p><u>Sample - 4410-2058 100-103.8</u> -silic. and seric. -hem. loc. assoc. with fract. -diss. py &lt;1%</p>			2058	100	103.8	3.8
			<p><u>Sample - 4410-2059 103.8-107.25</u> -lamprophyre dike</p>			2059	103.8	107.25	3.45
			<p><u>Sample - 4410-2060 107.25-111.8</u> -highly seric. and silic. -fol. bedded? -py along fol. &lt;1% -some less silic. beds contain more py 2%</p>	70°		2060	107.25	111.8	4.55

# David R. Bell Geological Services Inc.

## DIAMOND DRILL HOLE LOG

PROJECT 4410

Company Micham Exploration Inc.

HOLE No. 4410-87-6

Page 3 of     

	FOOTAGE		ROCK TYPE AND DESCRIPTION (alteration, structure, mineralization)	CORE ANGLES TO AXIS	% SULPHIDES	SAMPLE				
	FROM	TO				NUMBER	FROM	TO	LENGTH	
			Sample 4410-2060 cont'd -py also assoc. with fract. -fractures with halos of alt. -some possible argillaceous beds  -Sample - 4410-2061 111.8-115 -highly silic. and seric. -diss. py <1%  Sample - 4410-2062 115-116.75 -same as 2060  Sample - 4410-2063 116.75-122 -highly sericitized section -possible tuff many qz. frags present -py - 1-2% -minor carb  Sample - 4410-2064 122-125 -silicified, minor sericite -sheared -diss. py 1-2% -fol.	60-65°						
						2061	111.8	115	3.2	
						2062	115	116.75	1.75	
						2063	116.75	122	5.25	
						2064	122	125	3.0	
						2065	125	128.6	3.6	
						2066	128.6	133.6	5.0	
						2067	133.6	138.6	5.0	



# David R. Bell Geological Services Inc.

## DIAMOND DRILL HOLE LOG

 PROJECT 4410

 HOLE No. 4410-87-6

 Page 4 of 8

 Company Micham Exploration Inc.

	FOOTAGE		ROCK TYPE AND DESCRIPTION (alteration, structure, mineralization)	CORE ANGLES TO AXIS	% SULPHIDES	SAMPLE			
	FROM	TO				NUMBER	FROM	TO	LENGTH
			Sample - 4410-2068 138.6-143.35 -same as 2066			2068	138.6	143.35	4.75
			Sample - 4410-2069 143.35-148 -same as 2066			2069	143.35	148	4.65
			Sample - 4410-2070 148-149.8 -dead section in alt. -mafic tuff?			2070	148	149.8	1.8
			Sample - 4410-2071 149.8-154.65 -slightly more sericitic			2071	149.8	154.65	4.85
			Sample - 4410-2072 154.65-155.8 -same as 2071			2072	154.65	155.8	1.15
	155.8	397.15	Basalt - fine grained -green -massive, none foliated -amphibolitized -tr py  -291-304.25 - minor silic. locally also minor sericitization -very weak carb -tr-2% py locally -local foliation -possible carb-seric. schist zone	60°					
			Sample - 4410-2073 291-295 -as described above			2073	291	295	4
			Sample - 4410-2074 295-299.3 -same as 2073			2074	295	299.3	4.3

# David R. Bell Geological Services Inc.

## DIAMOND DRILL HOLE LOG

PROJECT 4410

Company Micham Exploration Inc.

HOLE No. 4410-87-6 Page 5 of 8

	FOOTAGE		ROCK TYPE AND DESCRIPTION (alteration, structure, mineralization)	CORE ANGLES TO AXIS	% SULPHIDES	SAMPLE			
	FROM	TO				NUMBER	FROM	TO	LENGTH
			<p><u>Sample - 4410-2075</u> 299.3-304.25 -same as 2073</p> <p>-back into fine grained basalt - ≈ 323 becomes foliated with brown biotite banding</p>	55-60°		2075	299.3	304.25	4.95
			<p><u>Sample - 4410-2076</u> 332.1-336.6 -slightly silic. and seric. -tr to &lt;1% py</p>			2076	332.1	336.6	4.5
			<p><u>Sample - 4410-2077</u> 336.6-339.25 -same as 2076</p> <p>-back into fine grained basalt -350.2-374.9 possible zone of carb-seric. schist -alteration is very weak -weak silic. and seric. -no carb -1-2% po and py magnetic -minor shearing -fol.</p>	70°		2077	336.6	339.25	2.65
			<p><u>Sample - 4410-2078</u> 350.2-355 -minor seric. and silic. -1-2% po and py</p>			2078	350.2	355	4.8
			<p><u>Sample - 4410-2079</u> 355-360 -same as 2078</p>			2079	355	360	5.0
			<p><u>Sample - 4410-2080</u> 360-365 -same as 2078</p>			2080	360	365	5.0
			<p><u>Sample - 4410-2081</u> 365-370 -same as 2078</p>			2081	365	370	5.0

# David R. Bell Geological Services Inc.

## DIAMOND DRILL HOLE LOG

PROJECT 4410

Company Micham Exploration Inc.

HOLE No. 4410-87-6 Page 6 of 8

FOOTAGE		ROCK TYPE AND DESCRIPTION (alteration, structure, mineralization)	CORE ANGLES TO AXIS	SULPHIDES	SAMPLE			
FROM	TO				NUMBER	FROM	TO	LENGTH
		<p>Sample - 4410-2082 370-374.9 -same as 2078 except slightly more sericitic locally</p> <p>-back into fine grained basalt</p>			2082	370	374.9	4.9
397.15	435.2	<p><u>Carbonate-Sericite Schist</u> -minor silic. and sericitization -locally sericitization is more intense -some carb, mostly along fol. -tr to 1-2% py locally -only minor qz-veining</p>						
		<p>Sample - 4410-2083 397.15-402.2 -minor silicification -minor sericitization -1-2% py in fract.</p>			2083	397.15	402.2	5.05
		<p>Sample - 4410-2084 402.2-404.7 -silicified -minor sericite -1-2% py in fract.</p>			2084	402.2	404.7	2.5
		<p>Sample - 4410-2085 404.7-409 -weakly altered -minor seric. locally - &lt;1% py</p>			2085	404.7	409	4.3
		<p>Sample - 4410-2086 409-413.1 -sericitized -intense silic. in proximity to qz-veins -1-2% py -fol.</p>	55°	1-2%	2086	409	413.1	4.1

# David R. Bell Geological Services Inc.

## DIAMOND DRILL HOLE LOG

PROJECT 4410

HOLE No. 4410-87-6

Page 7 of 8

Company Micham Exploration Inc.

	FOOTAGE		ROCK TYPE AND DESCRIPTION (alteration, structure, mineralization)	CORE ANGLES TO AXIS	% SULPHIDES	SAMPLE			
	FROM	TO				NUMBER	FROM	TO	LENGTH
			<u>Sample - 4410-2087</u> 413.1-415.9 -sericitized -minor silic. - <1% py			2087	413.1	415.9	2.8
			<u>Sample - 4410-2088</u> 415.9-418.9 -minor seric. -tr py			2088	415.9	418.9	3.0
			<u>Sample - 4410-2089</u> 418.9-421.15 -qz-veining and silic. -1% py in fract.			2089	418.9	421.15	2.25
			<u>Sample - 4410-2090</u> 421.15-425.55 -minor qz-veining and silic. -sericitized - <1% py some local sect. 2%			2090	421.15	425.55	4.4
			<u>Sample - 4410-2091</u> 425.55-428 -sericitized -minor silic. -1% py			2091	425.55	428	2.45
			<u>Sample - 4410-2092</u> 428-430.15 -minor sericite -1% py			2092	428	430.15	2.15
			<u>Sample - 4410-2093</u> 430.15-433.3 -sericitized -1% py  -431 possible fault clay core is ground			2093	430.15	433.3	3.15
			<u>Sample - 4410-2094</u> 433.3-435.2 -alt. dying -minor sericite -1% py			2094	433.3	435.2	1.9

# David R. Bell Geological Services Inc.

## DIAMOND DRILL HOLE LOG

PROJECT 4410

Company Micham Exploration Inc.

HOLE No. 4410-87-6

Page 8 of 8

	FOOTAGE		ROCK TYPE AND DESCRIPTION (alteration, structure, mineralization)	CORE ANGLES TO AXIS	% SULPHIDES	SAMPLE				
	FROM	TO				NUMBER	FROM	TO	LENGTH	
	435.2	500	<p>Mafic Tuff</p> <p>-fine grained</p> <p>-both felsic and mafic frags.</p> <p>-pyroxene rich</p> <p>-brown biotite banding</p> <p>-tr &lt;1% py</p>							
			<p>Sample - 4410-2095 450.8-454.25</p> <p>-sericitized</p> <p>-minor silic.</p> <p>-tr py</p>			2095	450.8	454.25	3.45	
			<p>Sample - 4410-2096 454.25-457.15</p> <p>-same as 2095</p> <p>-local sections of silic.</p>			2096	454.25	457.15	2.9	
			<p>Sample - 4410-2097 472.9-474.35</p> <p>-silic</p> <p>-tr py</p>			2097	472.9	474.35	1.45	
			<p>Sample - 4410-2098 478.1-479.7</p> <p>-same as 2097</p>			2098	478.1	479.7	1.6	
			<p>Sample - 4410-2099 487-488.5</p> <p>-same as 2097</p>			2099	487	488.5	1.5	
			- End of Hole 500'							

# David R. Bell Geological Services Inc.

## DIAMOND DRILL HOLE RECORD

Project 4410

Company Micham Exploration Inc.

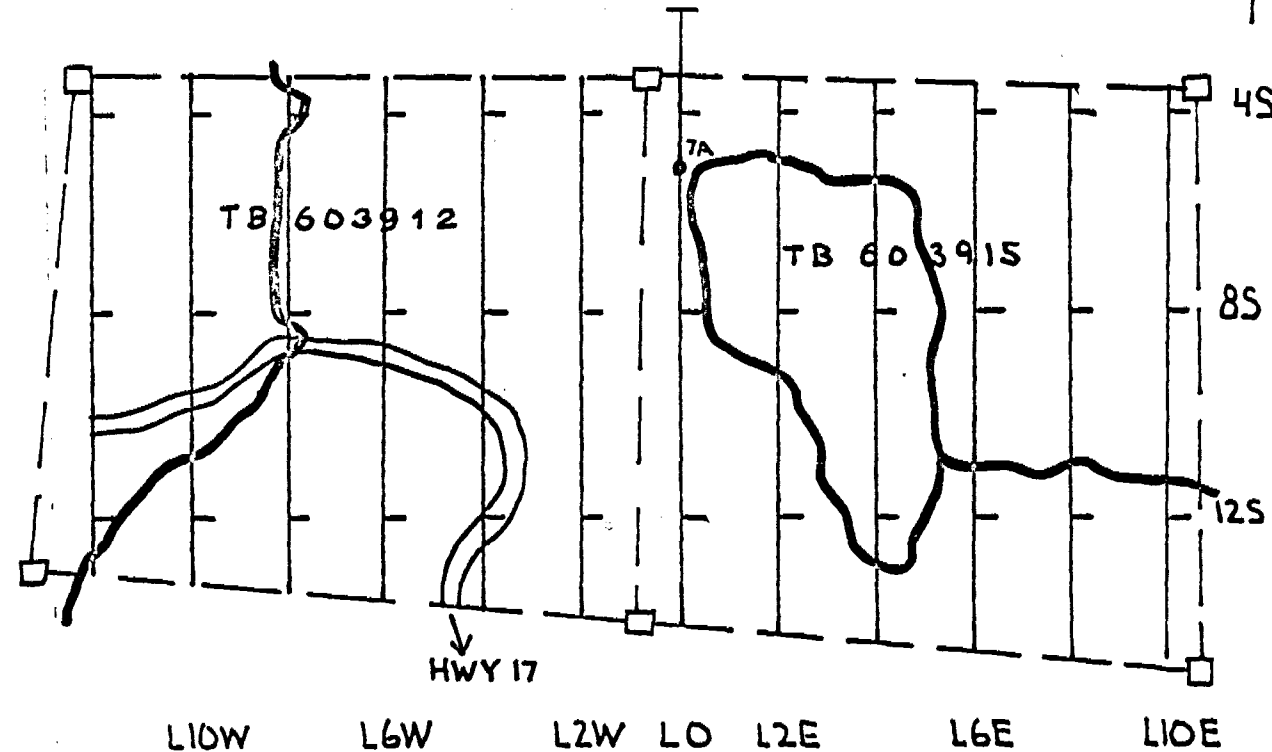
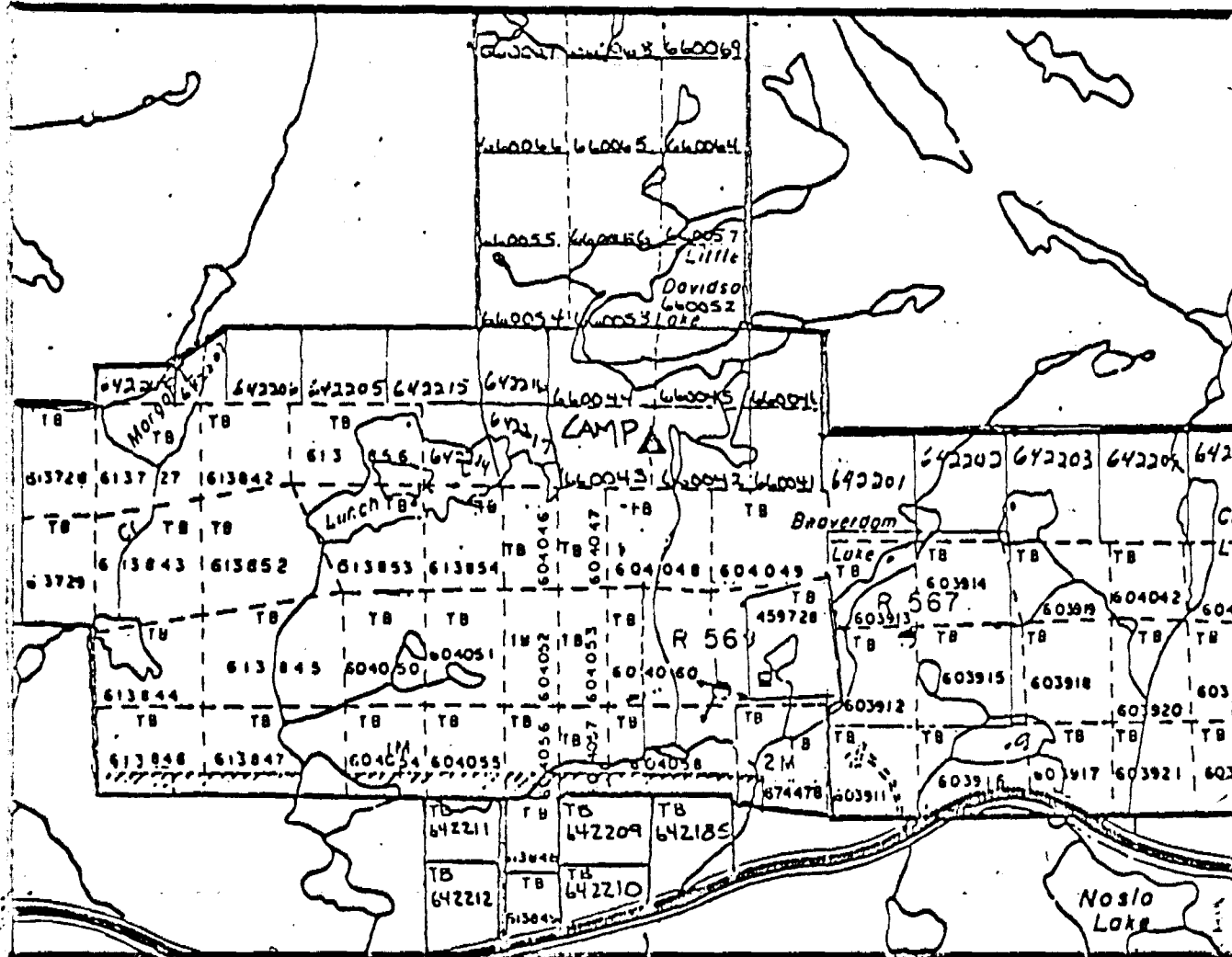
Hole No. 4410-87-7A

LOCATION		DIP TEST		LEVEL	HORIZONTAL COMPONENT	DATE STARTED
AREA or TWP.	FOOTAGE	ANGLE		ELEVATION	VERTICAL COMPONENT	DATE FINISHED
		RECORDING	CORRECTED			
Syine Township	0		-50		329	Feb. 8/87
CLAIM NO. TB603915	150		-50		375	Feb. 10/87
	300		-48		0	LOGGED BY M. Simunovic
	500		-47		LENGTH 501 BQ core	PURPOSE
NTS	UTM			LATITUDE 1.0	CORE LOCATION	TOT. RECOVERY
				DEPARTURE 5+10S		

**DIAMOND DRILL HOLE LOCATION SKETCHES**  
CLAIM MAP Scale: 1 inch to 1/4 mile

**DIAMOND DRILL HOLE LOCATION WITH RESPECT TO CLAIM BOUNDARIES**  
Scale: 1 inch to 400 feet

Signature *Mike Simunovic*



# David R. Bell Geological Services Inc.

## DIAMOND DRILL HOLE LOG

PROJECT 4410

Company Micham Exploration Inc.

HOLE No. 4410-87-7A Page 1 of 5

	FOOTAGE		ROCK TYPE AND DESCRIPTION (alteration, structure, mineralization)	CORE ANGLES TO AXIS	% SULPHIDES	SAMPLE			
	FROM	TO				NUMBER	FROM	TO	LENGTH
	0	20	Overburden: casing left in hole						
	20	50	Basalt - fine grained -massive -green -amphibolitized						
	50	146	Mafic Tuff - appears to grade from basalt to tuff -no definite contact -coarse ash to lapilli tuff pyroxene and chlorite rich matrix -possible that these felsic fragments may be leucoxene and feldspar phenocrysts and the host is a basalt flow rather than a pyroclastic -90-125 tuff is finer grained						
	146	198.8	Basalt massive, very fine grained -no flow textures, amphibolitized						
	198.8	227.45	Carbonate-Sericite Schist -weak alt., silicification, intense sericitization locally -local carb -pyrrhotite present 1-3% -fol.	55°					
			Sample - 4410-1990 198.8-203.8 -silic. minor, highly seric. locally -local carb., tr py			1990	198.8	203.8	5.0
			Sample - 4410-1991 203.8-205.65 -same as 1990			1991	203.8	205.65	1.85
			Sample - 4410-1992 205.65-210.65 -sericitized -1-3% po -local carb			1992	205.65	210.65	5.0

# David R. Bell Geological Services Inc.

## DIAMOND DRILL HOLE LOG

PROJECT 4410

Company Micham Exploration Inc.

HOLE No. 4410-87-7A Page 2 of 5

FOOTAGE		ROCK TYPE AND DESCRIPTION (alteration, structure, mineralization)	CORE ANGLES TO AXIS	% SULPHIDES	SAMPLE			
FROM	TO				NUMBER	FROM	TO	LENGTH
		Sample 4410-1992 cont'd -minor silic. - <1% py						
		<u>Sample</u> - 4410-1993 210.65-215.65 -same as 1992			1993	210.65	215.65	5.0
		<u>Sample</u> - 4410-1994 215.65-220.65 -same as 1992			1994	215.65	220.65	5.0
		<u>Sample</u> - 4410-1995 220.65-225.65 -same as 1992			1995	220.65	225.65	5.0
		<u>Sample</u> - 4410-1996 225.65-227.45 -alt. dies out -mafic tuff			1996	225.65	227.45	1.8
227.45	261.9	<u>Basalt</u> - fine grained -massive -green-grey -vesicles present to 246'						
261.9	308.65	<u>Carbonate-Sericite Schist</u> -sheared -locally carb along fol. and in fractures -sericitization varies -minor silic. -local hematization -1-3% py along fol. locally						
		<u>Sample</u> - 4410-1997 261.9-264.25 -sericitized -minor silic. -loc. carb -tr py			1997	261.9	264.25	2.35



# David R. Bell Geological Services Inc.

## DIAMOND DRILL HOLE LOG

PROJECT 4410

Company Micham Exploration Inc.

HOLE No. 4410-87-7A

Page 3 of     

FOOTAGE		ROCK TYPE AND DESCRIPTION (alteration, structure, mineralization)	CORE ANGLES TO AXIS	% SULPHIDES	SAMPLE			
FROM	TO				NUMBER	FROM	TO	LENGTH
		<p>Sample - 4410-1998 264.25-266.7                      -loc. intense seric.                      -minor silic.                      -loc. carb                      - &lt;1% py along fol.</p>	55-65°		1998	264.25	266.7	2.45
		<p>Sample - 4410-1999 266.7-270.35                      -sericitized                      -loc. hem.                      -loc. carb.                      - &lt;1% py                      -minor silic.</p>		1999	266.7	270.35	3.65	
		<p>Sample - 4410-2000 270.35-272.55                      -weak sericitization                      -carb along fol.                      - &lt;1% py                      -minor silic.</p>		2000	270.35	272.55	2.2	
		<p>Sample - 4410-2001 272.55-276                      -weakly sericitized                      -minor carb                      - &lt;1% py</p>		2001	272.55	276	3.45	
		<p>Sample - 4410-2002 276-280.25                      -same as 2001</p>		2002	276	280.25	4.25	
		<p>Sample - 4410-2003 280.25-282.5                      -same as 2001</p>		2003	280.25	282.5	2.25	
		<p>Sample - 4410-2004 282.5-286                      -highly sericitized                      -minor carb                      - &lt;1% py</p>		2004	282.5	286	3.5	

# David R. Bell Geological Services Inc.

## DIAMOND DRILL HOLE LOG

PROJECT 4410

Company Micham Exploration Inc.

HOLE No. 4410-87-7A Page 4 of 5

FOOTAGE		ROCK TYPE AND DESCRIPTION (alteration, structure, mineralization)	CORE ANGLES TO AXIS	% SULPHIDES	SAMPLE			
FROM	TO				NUMBER	FROM	TO	LENGTH
		Sample - 4410-2005 286-288.95 -same as 2004			2005	286	288.95	2.95
		Sample - 4410-2006 288.95-291.35 -qz-vein -inclusions of host rock which contain py			2006	288.95	291.35	2.4
		Sample - 4410-2007 291.35-293.85 -same as 2006			2007	291.35	293.85	2.5
		Sample - 4410-2008 293.85-295.65 -qz-veining, with host rock -qz-vein contains massive py while host contains 2-5% py -host is sericitized, carb in fract.			2008	293.85	295.65	1.8
		Sample - 4410-2009 295.65-297.7 -qz-veining -sericitized host - <1% py			2009	295.65	297.7	2.05
		Sample - 4410-2010 297.7-302.5 -same as 2009			2010	297.7	302.5	4.8
		Sample - 4410-2011 302.5-306 -highly sericitized -local carb and hem. - <1% py			2011	302.5	306	3.5
		Sample - 4410-2012 306-308.65 -weak sericitization -loc. carb			2012	306	308.65	2.65
308.65	386	Mafic Tuff -mafic fragments in a mafic matrix -some more felsic sections as well (appears to grade into these)						

# David R. Bell Geological Services Inc.

## DIAMOND DRILL HOLE LOG

PROJECT 4410

Company Micham Exploration Inc.

HOLE No. 4410-87-7A Page 5 of 5

	FOOTAGE		ROCK TYPE AND DESCRIPTION (alteration, structure, mineralization)	CORE ANGLES TO AXIS	% SULPHIDES	SAMPLE					
	FROM	TO				NUMBER	FROM	TO	LENGTH		
			-mafic frags. are very apparent in the felsic sections -chloritic on slip planes  <u>Sample - 4410-2013 358-362.75</u> -sericitized -py and po < 1% -local carb  -364 clots of pyrrhotite  <u>Sample - 4410-2014 376-378.1</u> -1-3% py and po -3" section massive po -minor silic.  -381-382 lapilli sized fragments -possible that this area represents flow top -biotite banding and fracturing								
	386	446	<u>Basalt - fine grained</u> -green -massive -pyroxene and chlorite rich								
	446	501	<u>Mafic Tuff</u> -brown biotite banding -felsic and mafic frags -some sections of lapilli sized fragments 456-466 -some chloritic banding -some larger felsic bands up to 1 inch, may be large fragments -472-473 fault clay and brecc.  -End of Hole 501'	50°							

# David R. Bell Geological Services Inc.

## DIAMOND DRILL HOLE RECORD

Project - 4410

Company Micham Exploration Inc.

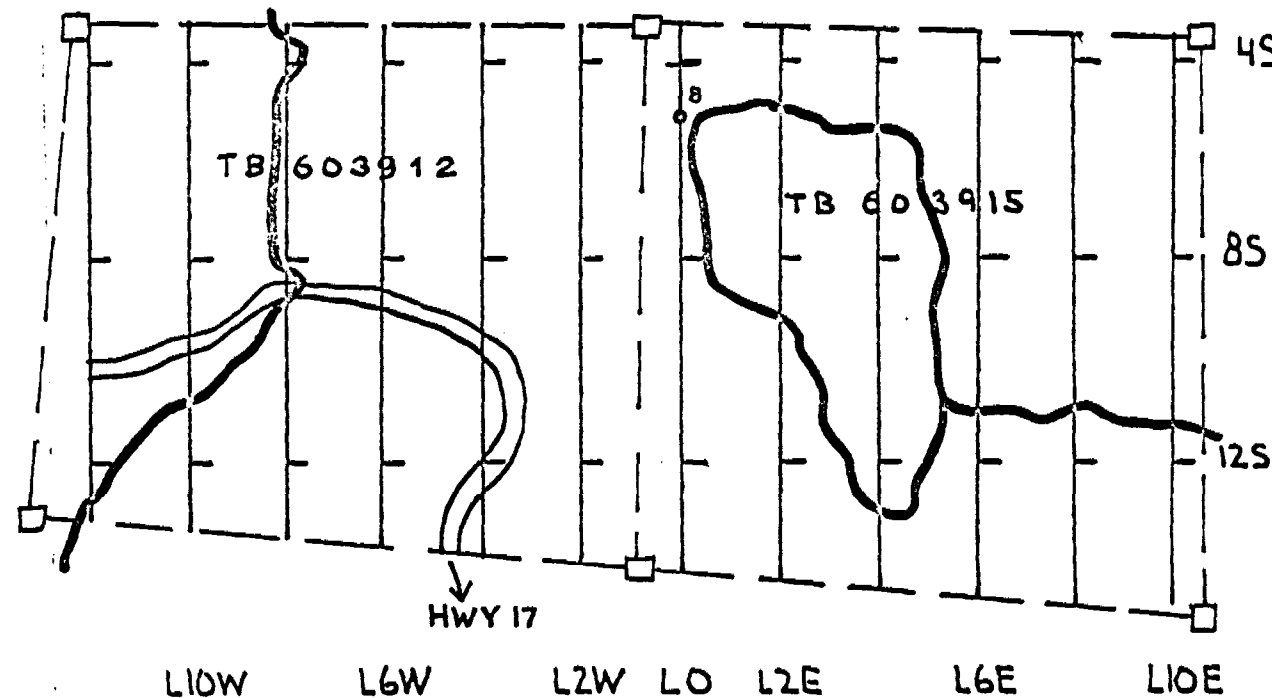
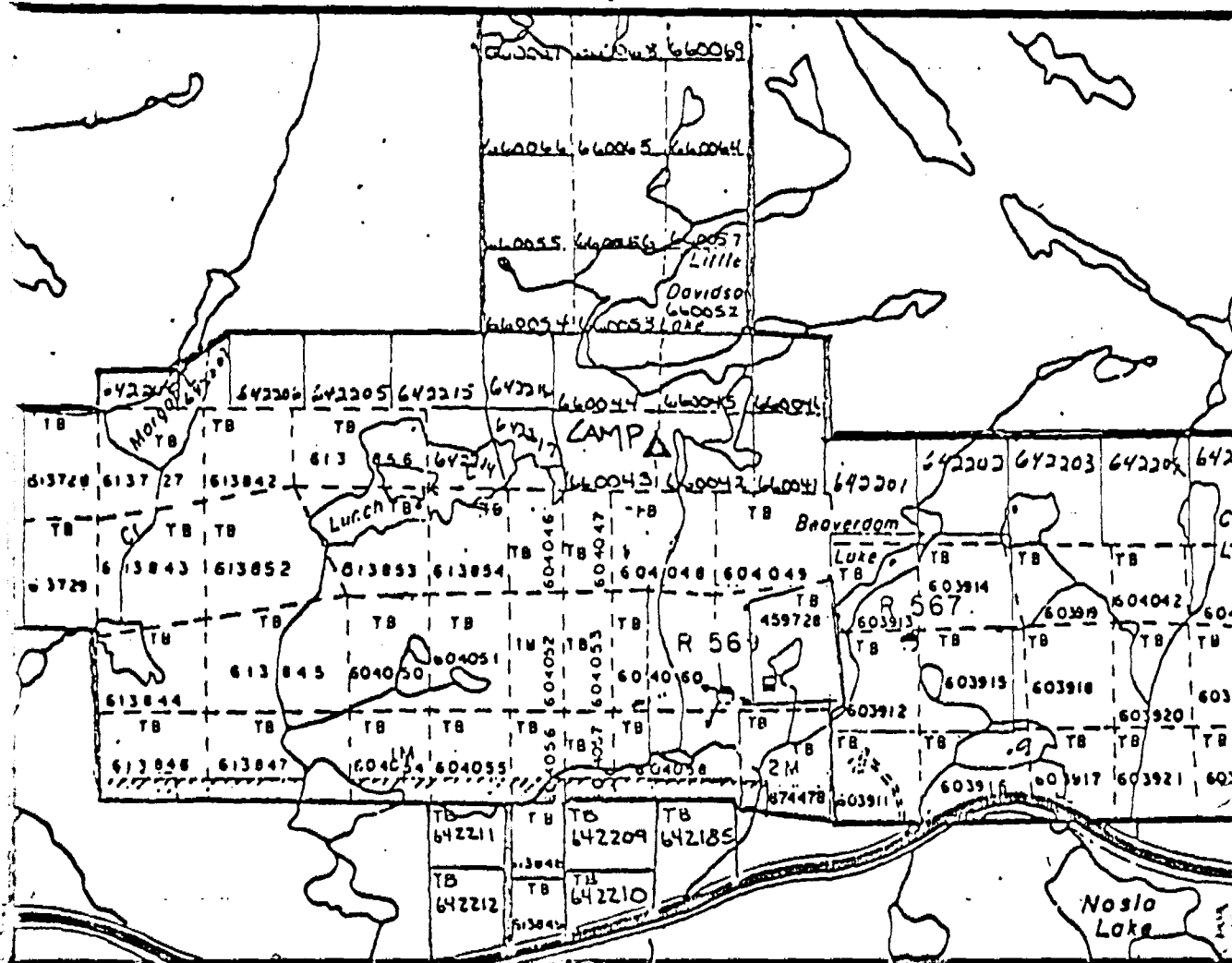
Hole No. 4410-87-8

LOCATION	DIP TEST		LEVEL	HORIZONTAL COMPONENT	DATE STARTED
AREA or TWP. <b>Syine Township</b>	FOOTAGE	ANGLE		104	Feb. 11/87
		RECORDING	CORRECTED	VERTICAL COMPONENT	DATE FINISHED
	0		-80	487	Feb. 15/87
	150		-80	BEARING	LOGGED BY
CLAIM NO. <b>TB603915</b>	300		-77	0	M. Simunovic
NTS	UTM	450		-76	PURPOSE
					497 BQ core
					CORE LOCATION
			ELEVATION		
			LATITUDE	L0	
			DEPARTURE	5+10S	

**DIAMOND DRILL HOLE LOCATION SKETCHES**  
CLAIM MAP Scale: 1 inch to 1/2 mile

**DIAMOND DRILL HOLE LOCATION WITH RESPECT TO CLAIM BOUNDARIES**  
Scale: 1 inch to 400 feet

Signature *Mike Simunovic B.Sc.*



# David R. Bell Geological Services Inc.

## DIAMOND DRILL HOLE LOG

 PROJECT 4410

 HOLE No. 4410-87-8

 Page 1 of 2

 Company Micham Exploration Inc.

	FOOTAGE		ROCK TYPE AND DESCRIPTION (alteration, structure, mineralization)	CORE ANGLES TO AXIS	% SULPHIDES	SAMPLE			
	FROM	TO				NUMBER	FROM	TO	LENGTH
	0	25	<u>Overburden:</u> casing left in hole						
	25	192.5	<u>Basalt</u> - green, massive -fine grained -amphibolized (amphibole crystals apparent) -chlorite and pyroxene present  Sample - 4410-2015 26.1-29.9 -sericitized -local hem. -py along fol. <1% -carb along fol. -3l' possible vesicles			2015	26.1	29.9	3.8
	192.5	290	<u>Mafic Tuff</u> -felsic fragments in a pyroxene and chl. rich matrix -may, as in hole 7, present a coarse basalt flow with leuxocene and feldspar phenocrysts  Sample - 4410-2016 274-276.65 -sericitized -minor silic. and hem. -carb along fol. -1% py along fol.  -this may represent upper alteration zone as found in hole 7	35°		2016	274	276.65	2.65
	290	378.55	<u>Basalt</u> - fine grained -massive -green -327-330 fault zone -slickensides present but core is broken and ground -no angle possible -= 335 get a coarsening of grain size						

# David R. Bell Geological Services Inc.

## DIAMOND DRILL HOLE LOG

PROJECT 4410

HOLE No. 4410-87-8

Page 2 of 5

Company Micham Exploration Inc.

FOOTAGE		ROCK TYPE AND DESCRIPTION (alteration, structure, mineralization)	CORE ANGLES TO AXIS	% SULPHIDES	SAMPLE			
FROM	TO				NUMBER	FROM	TO	LENGTH
		-gradual change, not a sharp contact -core also becomes highly magnetic -possible intrusive (diabase to gabbro) or a coarse flow center, ends 378.55 -no definite contacts						
378.55	421.2	<u>Carbonate-Sericite Schist</u> -alteration is very weak -carbonatized but weakly sericitic -local hematization -minor qz-veining  <u>Sample - 4410-2017 378.55-383.2</u> -carbonatized -minor sericite locally -sheared -1-2% py along fol.  <u>Sample - 4410-2018 383.2-385.45</u> -qz-vein -hematized host inclu. -py and cpy in fract.  <u>Sample - 4410-2019 385.45-386.75</u> -sericitized, minor silic. -minor carb in fract. -minor hem. -py along fol. 1-2%  <u>Sample - 4410-2020 386.75-389.45</u> -carb minor seric. -tr py  <u>Sample - 4410-2021 389.45-392.65</u> -same as 2020	35°					
					2017	378.55	383.2	4.65
					2018	383.2	385.45	2.25
					2019	385.45	386.75	1.3
					2020	386.75	389.45	2.7
					2021	389.45	392.65	3.2

# David R. Bell Geological Services Inc.

## DIAMOND DRILL HOLE LOG

PROJECT 4410

Company Micham Exploration Inc.

HOLE No. 4410-87-8

Page 3 of 5

	FOOTAGE		ROCK TYPE AND DESCRIPTION (alteration, structure, mineralization)	CORE ANGLES TO AXIS	% SULPHIDES	SAMPLE			
	FROM	TO				NUMBER	FROM	TO	LENGTH
			Sample - 4410-2022 392.65-394.15 -qz-vein -tr py			2022	392.65	394.15	1.5
			Sample - 4410-2023 394.15-397.45 -same as 2020			2023	394.15	397.45	3.3
			Sample - 4410-2024 397.45-401.85 -same as 2020			2024	397.45	401.85	4.4
			Sample - 4410-2025 401.85-404.15 -qz-veining -sericitization -minor silic. and carb -minor hem. -py along fol. 1%	40°		2025	401.85	404.15	2.3
			Sample - 4410-2026 404.15-407 -same as 2025			2026	404.15	407	2.85
			Sample - 4410-2027 407-411.15 -silic. and sericitized -minor carb -minor hem. -sheared -1-2% py			2027	407	411.15	4.15
			Sample - 4410-2028 411.15-414.95 -local sericitization and silic. -minor carb -tr py			2028	411.15	414.95	3.8

# David R. Bell Geological Services Inc.

## DIAMOND DRILL HOLE LOG

PROJECT 4410

Company Micham Exploration Inc.

HOLE No. 4410-87-8

Page 4 of     

	FOOTAGE		ROCK TYPE AND DESCRIPTION (alteration, structure, mineralization)	CORE ANGLES TO AXIS	% SULPHIDES	SAMPLE				
	FROM	TO				NUMBER	FROM	TO	LENGTH	
			<p>Sample - 4410-2029 414.95-418.8</p> <ul style="list-style-type: none"> <li>-minor carb</li> <li>-local silic. and seric.</li> <li>-py assoc. with silic. and seric.</li> <li>-some possible cherty beds</li> </ul> <p>-417 fault clay and brecc.</p>	36°						
			<p>Sample - 4410-2030 418.8-421.2</p> <ul style="list-style-type: none"> <li>-sericitized (minor)</li> <li>-carbonatized</li> </ul>			2029	414.95	418.8	3.85	
	421.2	476	<p><u>Mafic Tuff</u></p> <ul style="list-style-type: none"> <li>-felsic and mafic frags in mafic matrix</li> <li>-fine grained</li> <li>-foliated with localized unfoliated sections</li> </ul>	35°						
			<p>Sample - 4410-2031 461.15-463</p> <ul style="list-style-type: none"> <li>-minor silic.</li> <li>-brown biotite</li> <li>-po 1%</li> </ul>			2030	418.8	421.2	2.4	
			<p>Sample - 4410-2032 463-467</p> <ul style="list-style-type: none"> <li>-carb and silic.</li> <li>-brecc.</li> <li>-tr py</li> <li>-yellow mineral in fractures?, sulphur?</li> </ul>			2031	461.15	463	1.85	
			<p>Sample - 4410-2033 467-472</p> <ul style="list-style-type: none"> <li>-same as 2032</li> <li>-pyrrhotite present throughout</li> </ul>			2032	463	467	4	
	476	497	<p><u>Basalt</u> - fine grained</p> <ul style="list-style-type: none"> <li>-massive</li> <li>-green</li> <li>-vesicles present</li> </ul>			2033	467	472	5.0	



# David R. Bell Geological Services Inc.

## DIAMOND DRILL HOLE LOG

PROJECT 4410

HOLE No. 4410-87-8

Page 5 of 5

Company Micham Exploration Inc.

	FOOTAGE		ROCK TYPE AND DESCRIPTION (alteration, structure, mineralization)	CORE ANGLES TO AXIS	% SULPHIDES	SAMPLE				
	FROM	TO				NUMBER	FROM	TO	LENGTH	
			-472 vesicles with pyrrhotite -some leucoxene growths  -End of Hole 497'							

# David R. Bell Geological Services Inc.

## DIAMOND DRILL HOLE RECORD

Project - 4410

Company Micham Exploration Inc.

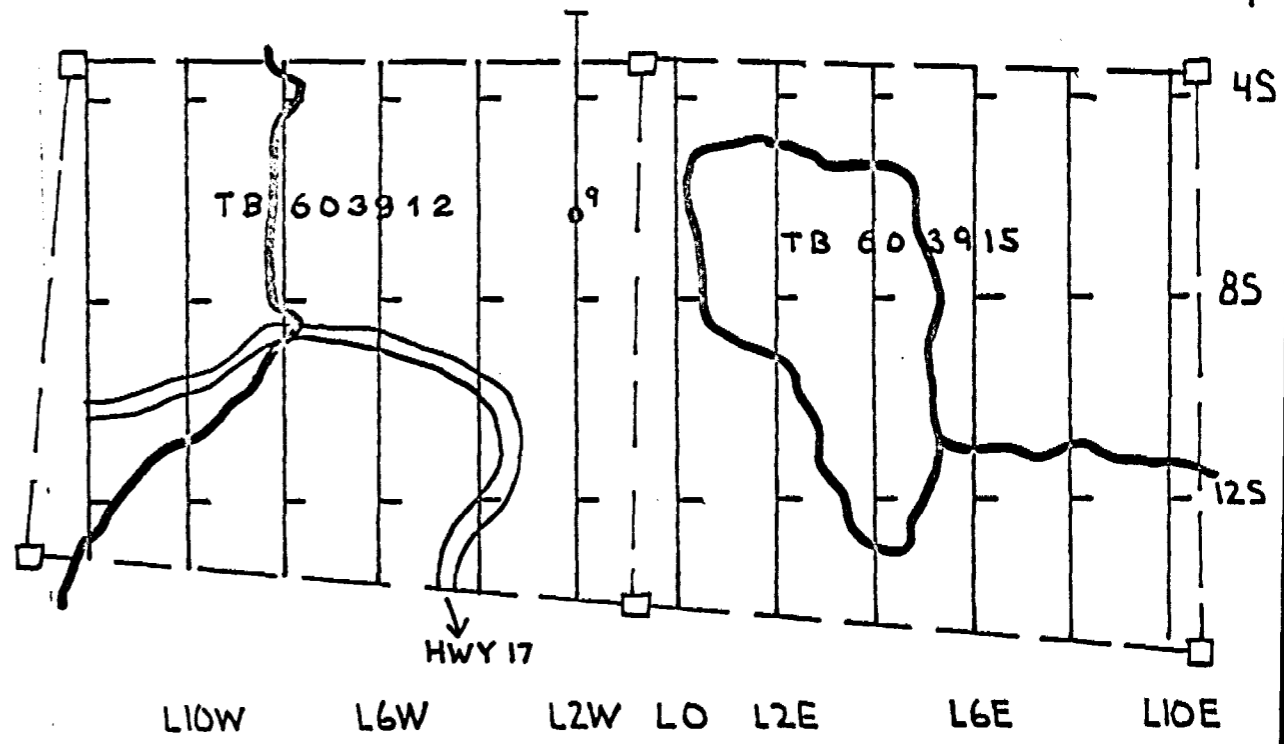
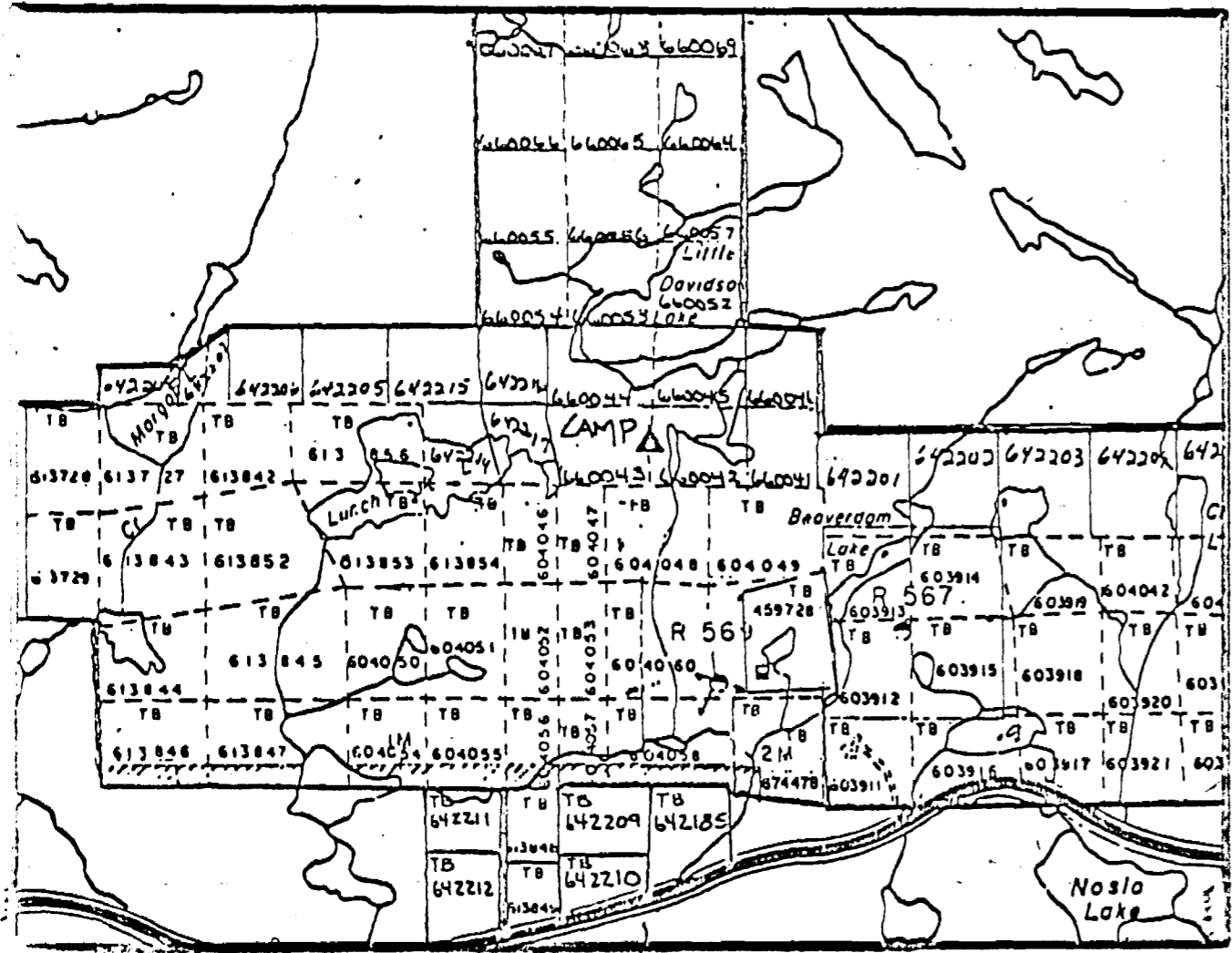
Hole No. 4410-87-9

LOCATION	DIP TEST		LEVEL	HORIZONTAL COMPONENT	DATE STARTED	
AREA or TWP. <b>Syine Township</b>	FOOTAGE	ANGLE		412	Feb. 15/87	
		RECORDING	CORRECTED	VERTICAL COMPONENT	516	
	0	-50	BEARING			0°
	150	-47		DATE FINISHED	Feb. 18/87	
	300	-47				
450	-45	LATITUDE	L2W			
600	-47			LENGTH	600 BQ core	
CLAIM NO. <b>TB603912</b>			DEPARTURE			6+30S
NTS	UTM			CORE LOCATION	TOT. RECOVERY	

**DIAMOND DRILL HOLE LOCATION SKETCHES**  
CLAIM MAP Scale: 1 inch to 1/2 mile

**DIAMOND DRILL HOLE LOCATION WITH RESPECT TO CLAIM BOUNDARIES**  
Scale: 1 inch to 400 feet

Signature *Mike Simunovic*



# David R. Bell Geological Services Inc.

## DIAMOND DRILL HOLE LOG

PROJECT 4410

HOLE No. 4410-87-9 Page 1 of 1

Company Micham Exploration Inc.

	FOOTAGE		ROCK TYPE AND DESCRIPTION (alteration, structure, mineralization)	CORE ANGLES TO AXIS	% SULPHIDES	SAMPLE			
	FROM	TO				NUMBER	FROM	TO	LENGTH
	0	32	Overburden - casing left in hole						
	32	116	<u>Basalt</u> - initially slightly brownish in colour due to biotite (2 feet) -after this fine grained green in colour -very weak foliation -amphibolitized -tr py -48.5 feet, weak fault zone -py present here -coarser grained 70-83.3 - $\approx$ 89						
	116	176.7	<u>Mafic Tuff</u> -fine to medium grained ash -felsic and mafic fragments -pyroxene rich -fragments of qz and feldspar  <u>Sample</u> - 4410-2101 163.4-165.8 -silic. -minor carb - < 1% py and po -fol.			2101	163.4	165.8	2.4
	176.7	226.8	<u>Basalt</u> - same as described 32-116 - $\approx$ 208 gets slightly coarser grained  218-226.8 minor silic. -sericitized -very minor carb -may be the extension (westerly) of the upper Carbonate-Sericite Schist Zone intersected in hole 8 -biotite locally, minor shearing -1-2% py locally along fol. -py in clots also	60°					

# David R. Bell Geological Services Inc.

## DIAMOND DRILL HOLE LOG

 PROJECT 4410

 Company Micham Exploration Inc.

 HOLE No. 4410-87-9

 Page 2 of     

FOOTAGE		ROCK TYPE AND DESCRIPTION (alteration, structure, mineralization)	CORE ANGLES TO AXIS	% SULPHIDES	SAMPLE			
FROM	TO				NUMBER	FROM	TO	LENGTH
		Sample - 4410-2102 218-220.05 -as described above			2102	218	220.05	2.05
		Sample - 4410-2103 220.05-223.55 -same as 2102			2103	220.05	223.55	3.5
		Sample - 4410-2104 223.55-226.8 -same as 2102			2104	223.55	226.8	3.25
226.8	289.25	<u>Mafic Tuff</u> -fine grained -some coarser sections -same as described 116-176.7  -250.25-260.55 <u>Granodiorite</u> -minor shearing at contacts						
289.25	335.75	<u>Carbonate-Sericite Schist</u> -weak alteration -sheared -localized sections of intense sericitization -carb along foliation -minor silic. -py and cpy present 1-2% -qz-veining, most barren -minor hematization locally	60°	1-2				
		Sample - 4410-2105 289.25-290.9 -sericitized -carb. on fol. -minor silic. and hem. -1-2% py and cpy			2105	289.25	290.9	1.65
		Sample - 4410-2106 290.9-292.6 -qz-vein -inclusions of sericitized host			2106	290.9	292.6	1.7

# David R. Bell Geological Services Inc.

## DIAMOND DRILL HOLE LOG

PROJECT 4410

HOLE No. 4410-87-9

Page 3 of

Company Micham Exploration Inc.

	FOOTAGE		ROCK TYPE AND DESCRIPTION (alteration, structure, mineralization)	CORE ANGLES TO AXIS	% SULPHIDES	SAMPLE			
	FROM	TO				NUMBER	FROM	TO	LENGTH
			Sample 4410-2106 cont'd -py and cpy and gelena assoc. with contacts of qz and host						
			Sample - 4410-2107 292.6-295.85 -same as 2105			2107	292.6	295.85	3.25
			Sample - 4410-2108 295.85-299.5 -qz-veining throughout -hem. assoc. with contacts -some host inclusions -<1% py in fractures			2108	295.85	299.5	3.65
			Sample - 4410-2109 299.5-304.6 -minor shearing -alt. very weak -core magnetic now -tr py			2109	299.5	304.6	5.1
			Sample - 4410-2110 304.6-307.5 -same as 2109			2110	304.6	307.5	2.9
			Sample - 4410-2111 307.5-311.15 -sericitized -minor silic. and carb -minor hem. -1-2% py -minor qz-veining			2111	307.5	311.15	3.65
			Sample - 4410-2112 311.15-315 -minor sericite -carbonatized -minor silicification -tr py -minor shear			2112	311.15	315	3.85

# David R. Bell Geological Services Inc.

## DIAMOND DRILL HOLE LOG

PROJECT 4410

HOLE No. 4410-87-9 Page 4 of     

Company Micham Exploration Inc.

	FOOTAGE		ROCK TYPE AND DESCRIPTION (alteration, structure, mineralization)	CORE ANGLES TO AXIS	% SULPHIDES	SAMPLE			
	FROM	TO				NUMBER	FROM	TO	LENGTH
			<p><u>Sample - 4410-2113</u> 315-318.85 -same as 2112</p>			2113	315	318.85	3.85
			<p><u>Sample - 4410-2114</u> 318.85-323.1 -same as 2112</p>			2114	318.85	323.1	4.25
			-320.3 minor fault clay seam	55°					
			<p><u>Sample - 4410-2115</u> 323.1-325.75 -sericitized -carbonatized -minor silic. -1-2% py 5% locally</p>			2115	323.1	325.75	2.65
			<p><u>Sample - 4410-2116</u> 325.75-330.1 -minor seric. and carb -1% py</p>			2116	325.75	330.1	4.35
			<p><u>Sample - 4410-2117</u> 330.1-334.3 -mafic tuff -tr py</p>			2117	330.1	334.3	4.2
			<p><u>Sample - 4410-2118</u> 334.3-335.75 -highly silicified -1% po in fract. -magnetic</p>			2118	334.3	335.75	1.45
	335.75	497.1	<p><u>Mafic Tuff</u> - same as described 116-176.7 -some brown biotite rich sections now</p>						
			<p>-376.4-388.4 possible carb-seric. schist -highly sericitized -minor silic. -1-2% py and po</p>						

# David R. Bell Geological Services Inc.

## DIAMOND DRILL HOLE LOG

PROJECT 4410

HOLE No. 4410-87-9

Page 5 of     

Company Micham Exploration Inc.

FOOTAGE		ROCK TYPE AND DESCRIPTION (alteration, structure, mineralization)	CORE ANGLES TO AXIS	% SULPHIDES	SAMPLE			
FROM	TO				NUMBER	FROM	TO	LENGTH
		<u>Sample - 4410-2119</u> 376.4-380.15 -as described above			2119	376.4	380.15	3.75
		<u>Sample - 4410-2120</u> 380.15-385 -same as 2119 -fol.	65°		2120	380.15	385	4.85
		<u>Sample - 4410-2121</u> 385-388.4 -same as 2119 except more po. -5% locally  -unaltered tuff -po present locally			2121	385	388.4	3.4
		<u>Sample - 4410-2122</u> 406.1-407.3 -locally carbonatized -50% po locally  -435.4-436.4 qz-vein barren -after this qz-carb veining intensifies for ≈ 3.0 feet -also appears to be larger lapilli sized fragments here	35°		2122	406.1	407.3	1.2
		<u>Sample - 4410-2123</u> 448.75-450.8 -carb -tr po -felsic alt.  -478.5-479.65 lamprophyre dike -larger felsic bands in core, may represent fragments			2123	448.75	450.8	2.05
497.1	600	<u>Basalt - fine grained</u> -massive -green -very little qz-carb veining -tr py						

# David R. Bell Geological Services Inc.

## DIAMOND DRILL HOLE LOG

PROJECT 4410

HOLE No. 4410-87-9

Page 6 of     

Company Micham Exploration Inc.

	FOOTAGE		ROCK TYPE AND DESCRIPTION (alteration, structure, mineralization)	CORE ANGLES TO AXIS	% SULPHIDES	SAMPLE			
	FROM	TO				NUMBER	FROM	TO	LENGTH
			-567.6 fault, clay seam and brecc. -556-569 very soft sandy section  -End of Hole 600'	60°					



# David R. Bell Geological Services Inc.

## DIAMOND DRILL HOLE RECORD

Project - 4410

Hole No. 4410-87-10

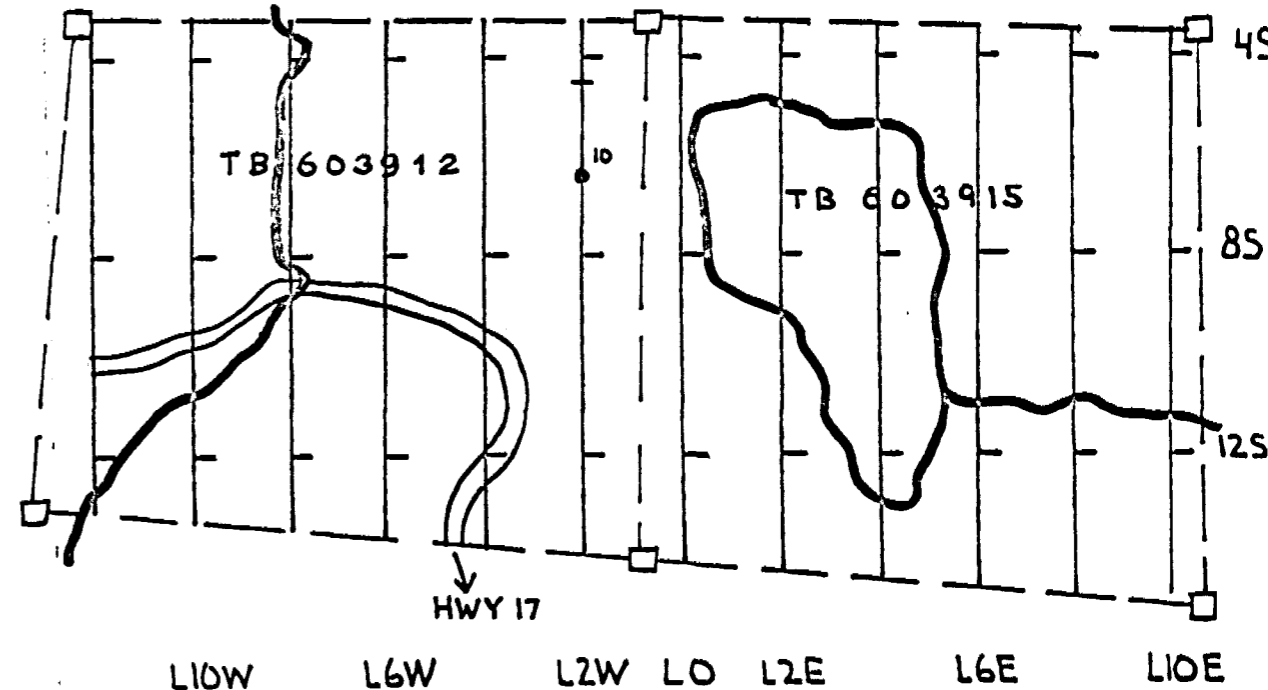
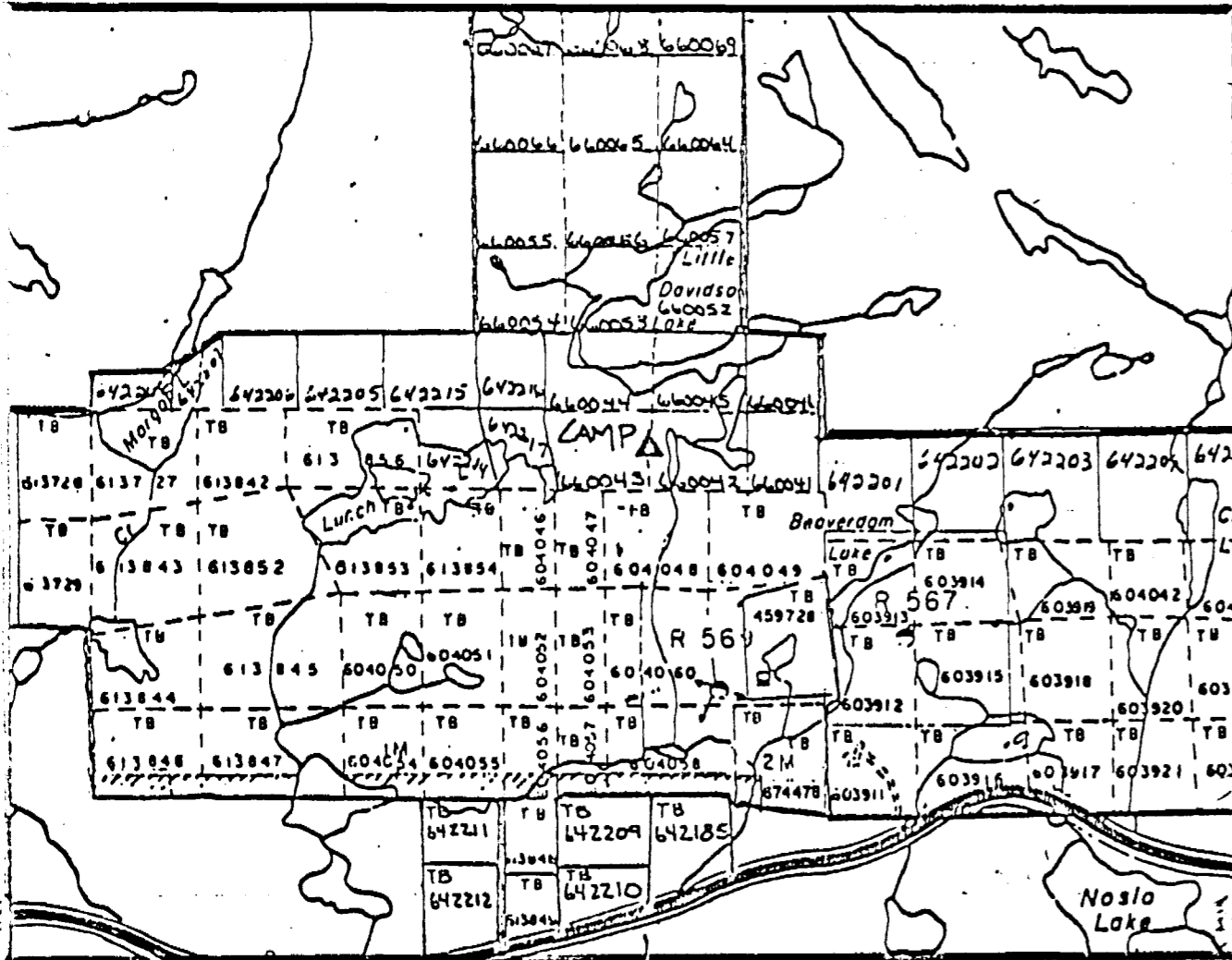
Company Micham Exploration Inc.

LOCATION	DIP TEST		LEVEL	HORIZONTAL COMPONENT	DATE STARTED
AREA or TWP. Syine Township	FOOTAGE	ANGLE		197	Feb. 18/87
		RECORDING	CORRECTED	VERTICAL COMPONENT	DATE FINISHED
CLAIM NO. TB612912	0			476	Feb. 21/87
	150			BEARING	LOGGED BY
	300			0°	M. Simunovic
NTS UTM	450			LATITUDE	PURPOSE
				L2W	516 BQ core
			DEPARTURE	6+30S	TOT RECOVERY

**DIAMOND DRILL HOLE LOCATION SKETCHES**  
CLAIM MAP Scale: 1 inch to 1/2 mile

**DIAMOND DRILL HOLE LOCATION WITH RESPECT TO CLAIM BOUNDARIES**  
Scale: 1 inch to 400 feet

Signature *M. Simunovic*



# David R. Bell Geological Services Inc.

## DIAMOND DRILL HOLE LOG

 PROJECT 4410

 Company Micham Exploration Inc.

 HOLE No. 4410-87-10

 Page 1 of 1

FOOTAGE		ROCK TYPE AND DESCRIPTION (alteration, structure, mineralization)	CORE ANGLES TO AXIS	% SULPHIDES	SAMPLE			
FROM	TO				NUMBER	FROM	TO	LENGTH
0	30	<u>Overburden:</u> casing left in hole						
30	131	<u>Basalt</u> - green, massive -fine grained -amphibolitized  <u>Sample</u> - 4410-2124 31.15-36 -minor silic. and sericite -tr py  <u>Sample</u> - 4410-2125 36-40.25 -same as 2124  <u>Sample</u> - 4410-2126 40.25-42.35 -same as 2124  -very little fracturing -very weak foliation			2124	31.15	36	4.85
					2125	36	40.25	4.25
					2126	40.25	42.35	2.1
131	180	<u>Mafic Tuff</u> -fine grained -felsic and mafic frags -pyroxene rich -most felsic frags are feldspar						
180	253.45	<u>Basalt</u> -same as described 30-131  -246.2-253.45 may represent upper zone of carb- seric. schist -silicified and sericitized -no carb -initially 1-2% py and po -248.7-253.45 5-10% py and po, tr cpy -fol.	45-55					

# David R. Bell Geological Services Inc.

## DIAMOND DRILL HOLE LOG

PROJECT 4410

Company Micham Exploration Inc.

HOLE No. 4410-87-10

Page 2 of 5

	FOOTAGE		ROCK TYPE AND DESCRIPTION (alteration, structure, mineralization)	CORE ANGLES TO AXIS	% SULPHIDES	SAMPLE			
	FROM	TO				NUMBER	FROM	TO	LENGTH
			<p>Sample - 4410-2127 246.2-248.7 -silic. -minor seric -1-2% py and po</p>			2127	246.2	248.7	2.5
			<p>Sample - 4410-2128 248.7-253.45 -silic. and seric. -5-10% py and po -tr cpy</p>			2128	248.7	253.45	4.75
	253.45	346	<p><u>Mafic Tuff</u> -same as described 131-180 -local brown biotite banding -296-347.7 possible basalt -fine grained -329.75-335 granodiorite -same as hole 9 -minor shearing and silic. assoc. with contacts</p>						
	346	388	<p><u>Carbonate-Sericite Schist</u> -highly sericitized -minor silicification -minor carb, restricted to fractures and along foliation -qz-veining -sheared -1-2% py throughout locally &lt;1 -qz-vein contains cpy -very minor local hematization -mineralization mostly along fol.</p>	35°					
			<p>Sample - 4410-2129 346-350.1 -minor sericitization -tr py</p>			2129	346	350.1	4.1

# David R. Bell Geological Services Inc.

## DIAMOND DRILL HOLE LOG

PROJECT 4410

Company Micham Exploration Inc.

HOLE No. 4410-87-10

Page 3 of 6

	FOOTAGE		ROCK TYPE AND DESCRIPTION (alteration, structure, mineralization)	CORE ANGLES TO AXIS	SULPHIDES	SAMPLE			
	FROM	TO				NUMBER	FROM	TO	LENGTH
			<p>Sample - 4410-2130 350.1-354                      -highly sericitized                      -minor silic.                      -tr-1% py                      -minor carb along fol.</p>			2130	350.1	354	3.9
			<p>Sample 4410-2131 354-356                      -qz-vein                      -inclusions of host rock                      -py, cpy and gelena in clots                      -hematization</p>			2131	354	356	2
			<p>Sample - 4410-2132 356-359.45                      -highly sericitized                      -minor silic.                      -qz-veining                      -1-2% py local 5%                      -hem. assoc. with qz-veining                      -358 7 inch section of mafic tuff</p>			2132	356	359.45	3.45
			<p>Sample - 4410-2133 359.45-361.95                      -sericitized                      -minor silic. and qz-veining                      -1-2% py locally</p>			2133	359.45	361.95	2.5
			<p>Sample 4410-2134 361.95-366.2                      -sericitized                      -minor silic.                      -1-2% py along fol.</p> <p>-362.1 possible fault, clay, core broken no angle, minor</p>			2134	361.95	366.2	4.25
			<p>Sample - 4410-2135 366.2-368.1                      -weak section                      -minor sericite and silic.                      -tr py</p>			2135	366.2	368.1	1.9

# David R. Bell Geological Services Inc.

## DIAMOND DRILL HOLE LOG

PROJECT 4410

Company Micham Exploration Inc.

HOLE No. 4410-87-10

Page 4 of     

	FOOTAGE		ROCK TYPE AND DESCRIPTION (alteration, structure, mineralization)	CORE ANGLES TO AXIS	% SULPHIDES	SAMPLE			
	FROM	TO				NUMBER	FROM	TO	LENGTH
			<u>Sample - 4410-2136</u> 368.1-369.5 -silic. and sericitized -1-2% py -5% locally			2136	368.1	369.5	1.4
			<u>Sample - 4410-2137</u> 369.5-371.5 -highly silic. and seric. -tr-1% py			2137	369.5	371.5	2
			<u>Sample - 4410-2138</u> 371.5-374.3 -qz-veining with inclusions of host -1% py -qz veins contain cpy			2138	371.5	374.3	2.8
			<u>Sample - 4410-2139</u> 374.3-376.3 -same as 2138			2139	374.3	376.3	2
			<u>Sample - 2140</u> 376.3-378.65 -seric. and silic. -4" qz-vein with cpy -1-2% py  -376.3 minor fault brecc. and clay	50°		2140	376.3	378.65	2.35
			<u>Sample - 4410-2141</u> 378.65-383.2 -minor silic. -seric. -1-2% py  -379-380 fault zone clay-brecc.	45°		2141	378.65	383.2	4.55
			<u>Sample - 4410-2142</u> 383.2-385.3 -minor silic. and seric. -tr py			2142	383.2	385.3	2.1

# David R. Bell Geological Services Inc.

## DIAMOND DRILL HOLE LOG

PROJECT 4410

Company Micham Exploration Inc.

HOLE No. 4410-87-10 Page 5 of     

	FOOTAGE		ROCK TYPE AND DESCRIPTION (alteration, structure, mineralization)	CORE ANGLES TO AXIS	% SULPHIDES	SAMPLE			
	FROM	TO				NUMBER	FROM	TO	LENGTH
			<p>Sample - 4410-2143 385.3-388 -same as 2142 except slightly more seric.</p>			2143	385.3	388	2.7
388	516		<p><u>Mafic Tuff</u> -felsic and mafic fragments, occasionally lapilli sized -brown biotite banding -tr py -chloritic on slip planes -local fol.</p>	45°					
			<p>Sample - 4410-2144 428.45-431.3 -minor seric. -1% py</p>			2144	428.45	431.3	2.85
			<p>Sample - 4410-2145 431.3-434.15 -some brecciation -minor seric. and silic. -1% py</p>			2145	431.3	434.15	2.85
			<p>-≈ 439.8 increased biotite banding and bleaching in core -also larger fragments evident locally</p>						
			<p>End of Hole 516</p>						

ONTARIO GEOLOGICAL SURVEY  
ASSESSMENT FILES  
RESEARCH OFFICE

APR 16 1987

RECEIVED



420155W0109 13 SYINE

900

Ontario  
 Name and Address of Recorded Holder

Mini

Micham Exploration Inc. c/o David R. Bell

T1185

Geological Services Inc. 261 Third Ave., Timmins, Ontario

Summary of Work Performance and Distribution of Credits

Total Work Days Cr. claimed <b>1705 - 3934</b>	Mining Claim		Work Days Cr.	Mining Claim		Work Days Cr.	Mining Claim		Work Days Cr.	
	Prefix	Number		Prefix	Number		Prefix	Number		
for Performance of the following work. (Check one only) <input type="checkbox"/> Manual Work <input type="checkbox"/> Shaft Sinking Drifting or other Lateral Work. <input type="checkbox"/> Compressed Air, other Power driven or mechanical equip. <input type="checkbox"/> Power Stripping <input checked="" type="checkbox"/> Diamond or other Core drilling <input type="checkbox"/> Land Survey	See attached List									

All the work was performed on Mining Claim(s): **TB603912 and 603915 SEE BELOW - WORK ASSIGNMENTS**

Required Information eg: type of equipment, Names, Addresses, etc. (See Table Below)

Diamond Drilling Company: Forages Firsa  
 34 Ste-Anne  
 Ville-Marie, Quebec  
 (819)622-0152

Drill: Longyear 38  
 Caterpillar 518 for moves

Drilling performed from January 19, 1987 to February 21, 1987

*Credits Available - 3934*  
*Credits Used - 1705*  
*Credit Balance 2229*

*Work Assignments:*  
 TB603912 - 2436 days - Balance 0  
 TB603915 - 1498 days - Balance 2502

THUNDER BAY MINING DIVISION  
 RECEIVED  
 APR 2 1987

MM 7, 8, 9, 10, 11, 12, 13, 14, 15, 16, 17, 18, 19, 20, 21, 22, 23, 24, 25, 26, 27, 28, 29, 30, 31

Date of Report	Recorded Holder or Agent (Signature)
Mar 31/87	Mike Simunovic

Certification Verifying Report of Work

I hereby certify that I have a personal and intimate knowledge of the facts set forth in the Report of Work annexed hereto, having performed the work or witnessed same during and/or after its completion and the annexed report is true.

Name and Postal Address of Person Certifying  
 Mike Simunovic 338 McLean Drive  
 Timmins, Ontario P4N 4W4

Date Certified	Certified by (Signature)
Mar 31/87	Mike Simunovic

Table of Information/Attachments Required by the Mining Recorder

Type of Work	Specific information per type	Other information (Common to 2 or more types)	Attachments
Manual Work.	Nil	Names and addresses of men who performed manual work/operated equipment, together with dates and hours of employment.	Work Sketch: these are required to show the location and extent of work in relation to the nearest claim post.
Shaft Sinking, Drifting or other Lateral Work			
Compressed air, other power driven or mechanical equip.	Type of equipment	Names and addresses of owner or operator together with dates when drilling/stripping done.	Work Sketch (as above) in duplicate
Power Stripping	Type of equipment and amount expended. Note: Proof of actual cost must be submitted within 30 days of recording.		
Diamond or other core drilling	Signed core log showing; footage, diameter of core, number and angles of holes.	Nil	Nil
Land Survey	Name and address of Ontario land surveyer.		

LIST OF CLAIMS

#4410

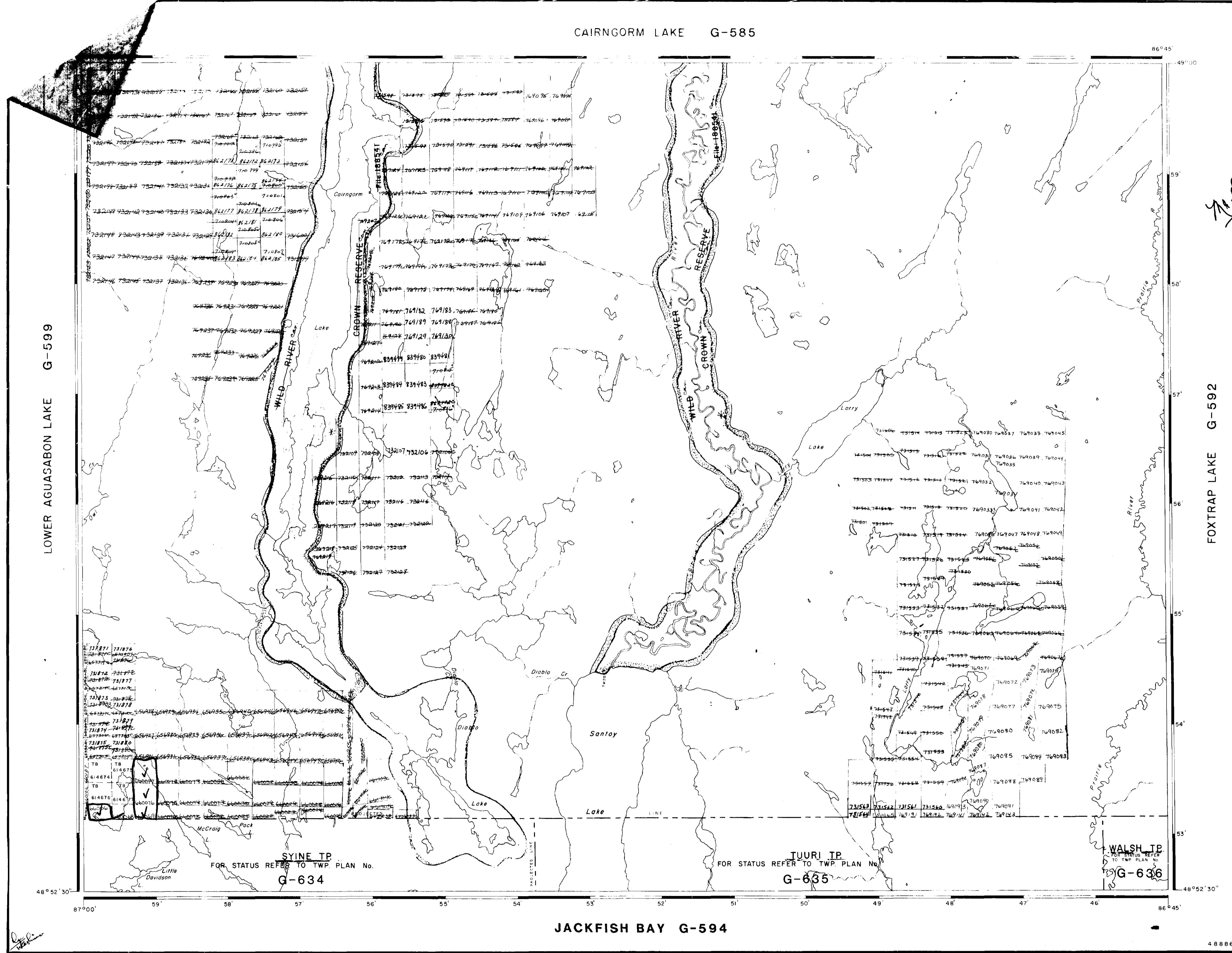
<u>Claim #</u>	<u>Days Credit</u>	<u>Claim #</u>	<u>Days Credit</u>
TB642185	40	TB642219	25
TB642201	25	TB642220	25
TB642202	40	TB660041	60
TB642203	40	TB660042	60
TB642204	25	TB660043	40
TB642205	40	TB660044	8
TB642206	40	TB660045	60
TB642207	40	TB660046	60
TB642208	40	TB660052	60
TB642209	40	TB660054	60
TB642210	40	TB660055	60
TB642211	40	TB660057	60
TB642212	40	TB660064	60
TB642214	40	TB660066	60
TB642215	60	TB660067	60
TB642216	60	TB660069	60
TB642217	40	TB660076	60
TB642218	25	TB660077	60
		TB674478	52

Total of 37 claims

RECEIVED  
 APR 2 1968  
 U.S. DEPARTMENT OF JUSTICE  
 FEDERAL BUREAU OF INVESTIGATION  
 WASHINGTON, D.C.



CAIRNGORM LAKE G-585



REFERENCES

AREAS WITHDRAWN FROM DISPOSITION

SR - SURFACE RIGHTS    MR - MINING RIGHTS

Description	Order No.	Date	Disposition	File
*				
* Disposition by exploratory licence of occupation only				

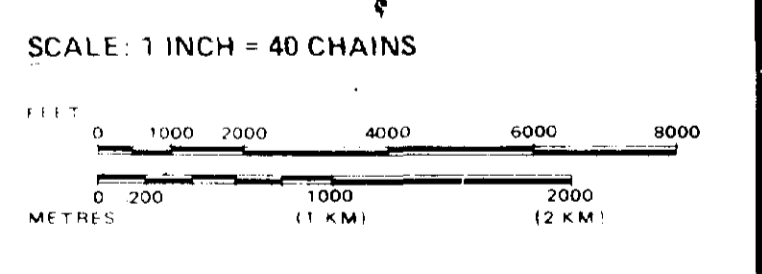
LEGEND

HIGHWAY AND ROUTE No	
OTHER ROADS	
TRAILS	
SURVEYED LINES	
TOWNSHIPS, BASE LINES, ETC	
LOTS, MINING CLAIMS, PARCELS ETC	
UNSURVEYED LINES	
LOT LINES	
PARCEL BOUNDARY	
MINING CLAIMS ETC	
RAILWAY AND RIGHT OF WAY	
UTILITY LINES	
NON PERENNIAL STREAM	
FLOODING OR FLOODING RIGHTS	
SUBDIVISION OR COMPOSITE PLAN	
RESERVATIONS	
ORIGINAL SHORELINE	
MARSH OR MUSKEG	
MINES	
TRAVERSE MONUMENT	

DISPOSITION OF CROWN LANDS

TYPE OF DOCUMENT	SYMBOL
PATENT, SURFACE & MINING RIGHTS	
" SURFACE RIGHTS ONLY	
" MINING RIGHTS ONLY	
LEASE, SURFACE & MINING RIGHTS	
" SURFACE RIGHTS ONLY	
" MINING RIGHTS ONLY	
LICENCE OF OCCUPATION	
ORDER IN COUNCIL	
RESERVATION	
CANCELLED	
SAND & GRAVEL	

NOTE: MINING RIGHTS IN PARCELS PATENTED PRIOR TO MAY 6, 1913, VESTED IN ORIGINAL PATENTEE BY THE PUBLIC LANDS ACT, R.S.O. 1970, CHAP. 380, SEC. 63, SUBSEC. 1



AREA

**SANTOY LAKE**

M. N. R. ADMINISTRATIVE DISTRICT

**TERRACE BAY**

MINING DIVISION *GERALDTON*

**THUNDER BAY**

LAND TITLES / REGISTRY DIVISION

**THUNDER BAY**

Ministry of Natural Resources  
Land Management Branch  
Ontario

Date MARCH, 1982  
Number **G-612**

