



42E03SE0022 10 UPPER AGUASABON LAKE

010

Diamond Drilling

Area of UPPER AGUASABON LAKE

Report N^o 10

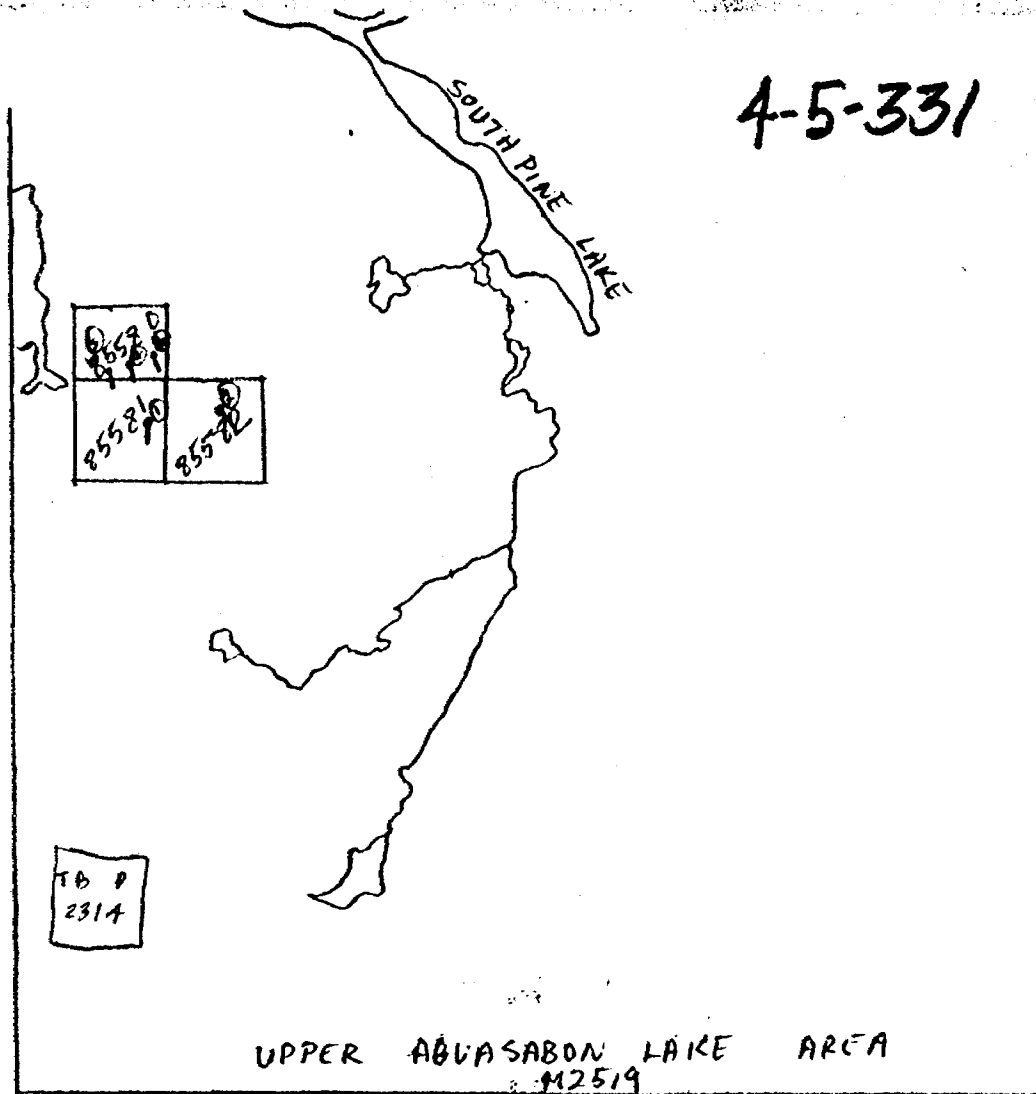
Work performed by: Valmont Mining Exploration Limited

| Claim N ^o | Hole N ^o | Footage | Date | Note |
|----------------------|---------------------|---------|--------|------|
| TB 85581 | 1 | 200.0' | Oct/58 | |
| TB 85582 | 2 | 205.0' | Oct/58 | |
| TB 85580 | 3 | 197.0' | Oct/58 | |
| | 4 | 202.0' | Oct/58 | |
| | 5 | 197.0' | Oct/58 | |

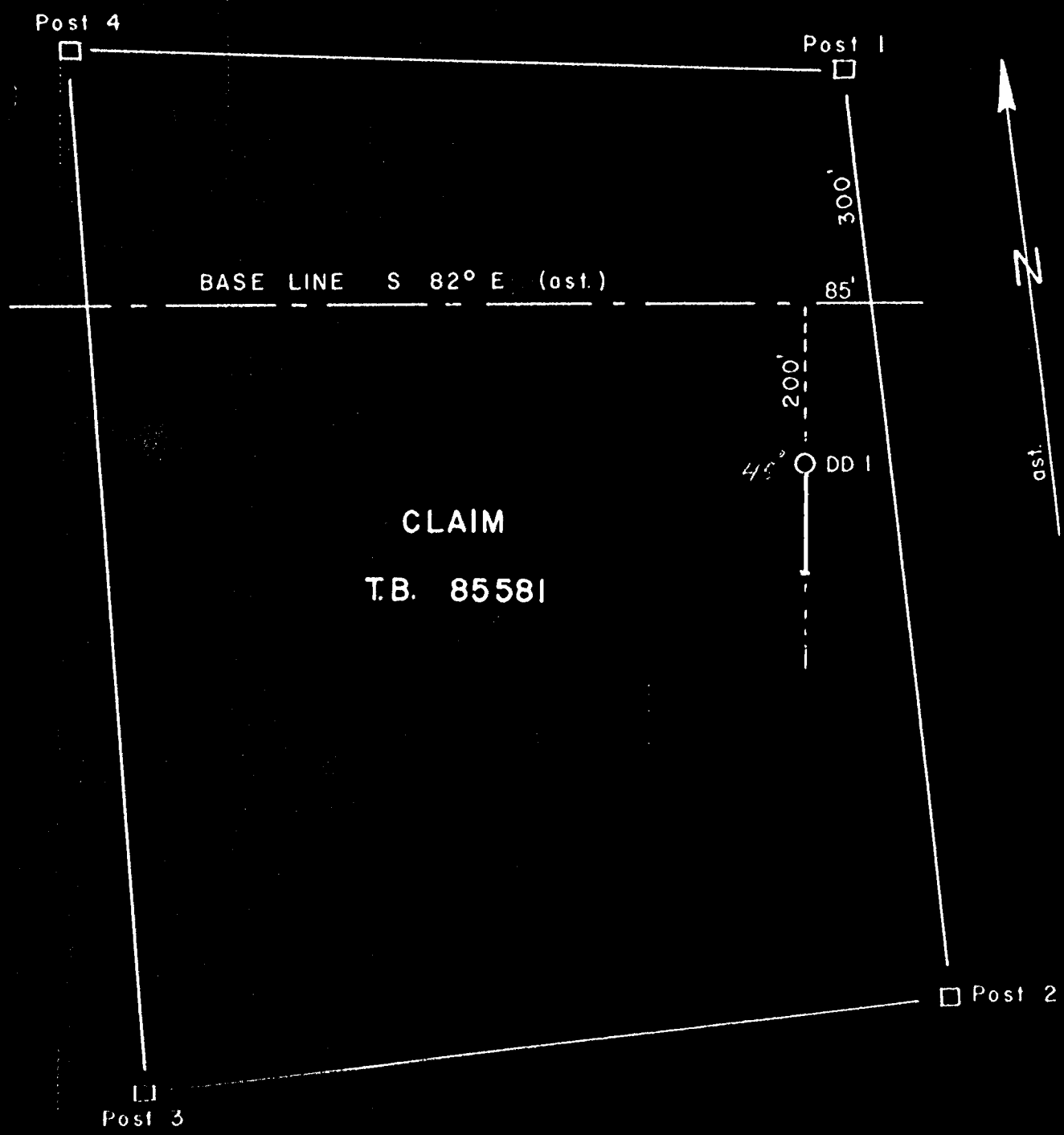
5 DDA 1001'

Notes:

4-5-331



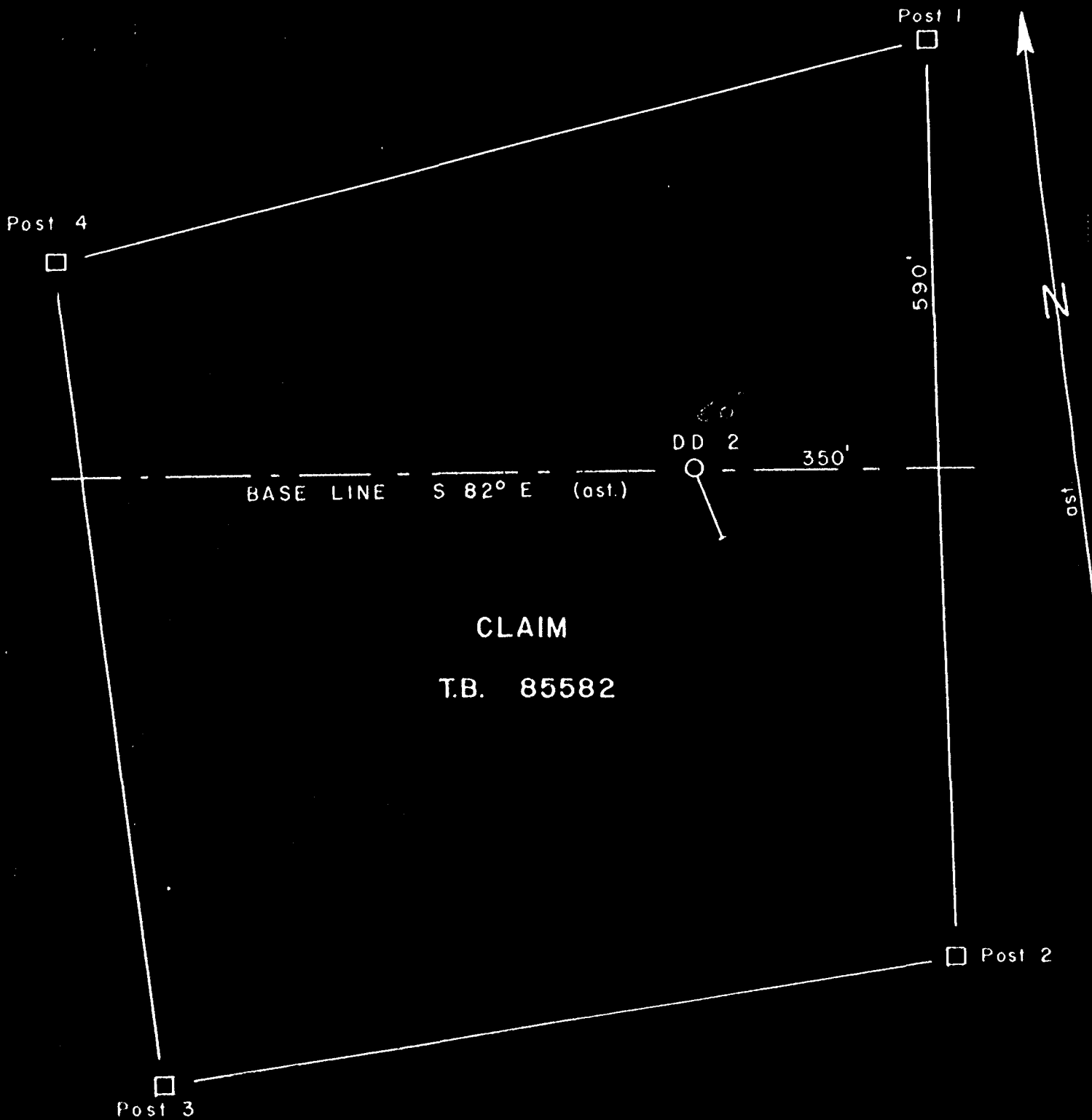
UPPER ABWASABON LAKE AREA
M2519



CLAIM
T.B. 85581

PLAN SHOWING LOCATION OF DRILL HOLES IN
RELATION TO CLAIM POSTS

Scale: 1" = 200'

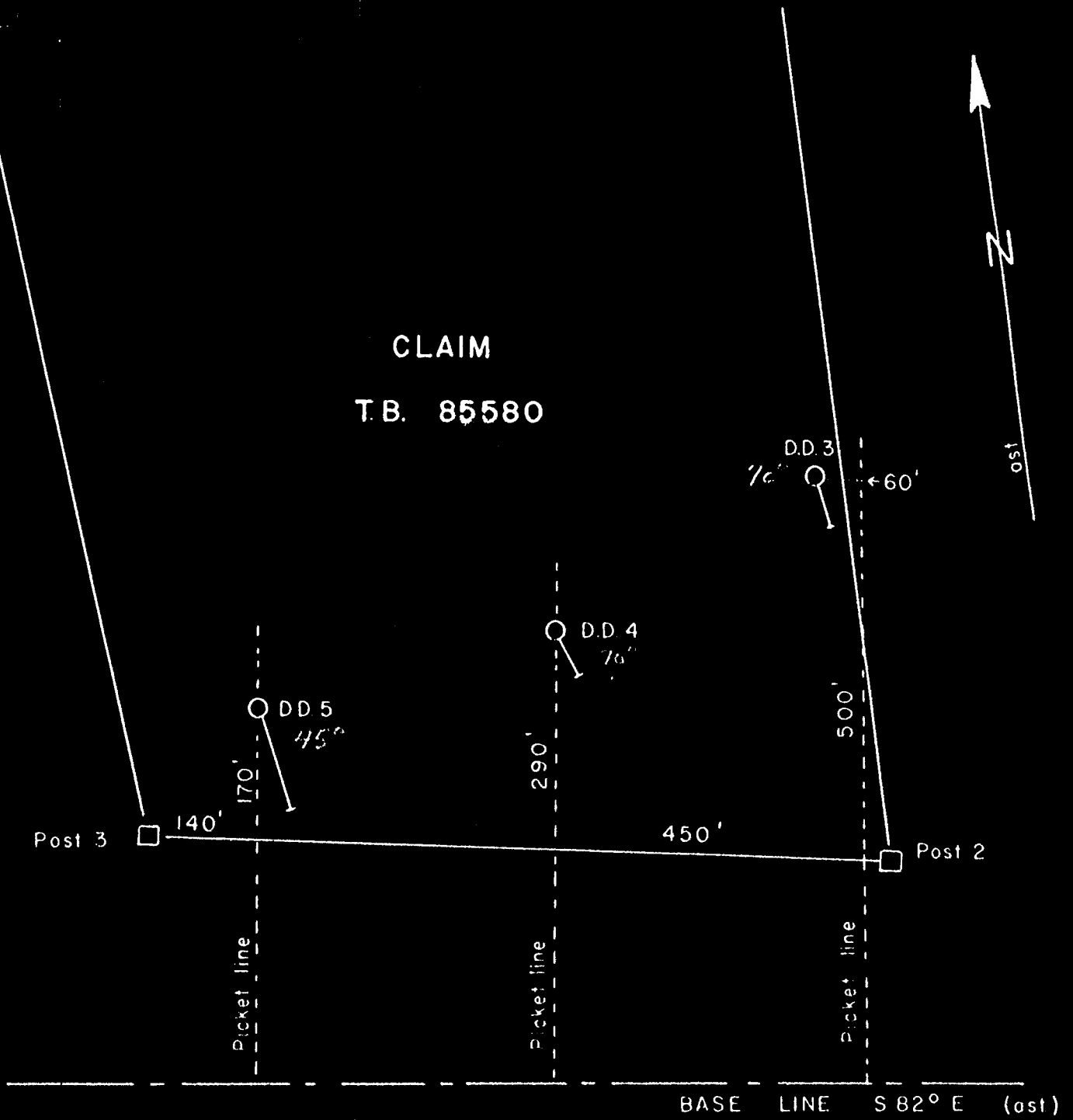


CLAIM
T.B. 85582

PLAN SHOWING LOCATION OF DRILL HOLES IN
RELATION TO CLAIM POSTS

Scale: 1" = 200'

CLAIM
T.B. 85580



PLAN SHOWING LOCATION OF DRILL HOLES IN
RELATION TO CLAIM POSTS

Scale: 1" = 200'

Diamond Drill Record

PROPERTY Big Duck Lake

COMPANY VALMONT MINING EXPLORATION LTD.

HOLE No. 1

PROJECT No.

SHEET NUMBER 1 of

BEARING South

STARTED Oct. 4/58

LATITUDE 2 + 00S

DIP at Collar

Angle - 45°

COMPLETED Oct. 7/58

DEPARTURE L - 52E

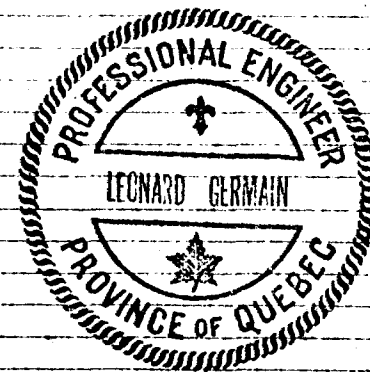
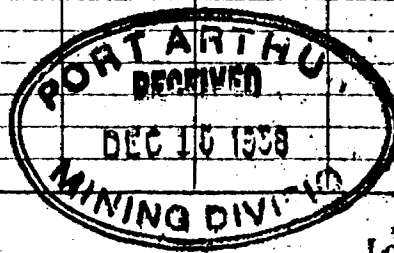
at
at
at
at

PROPOSED DEPTH

ELEVATION

ULTIMATE DEPTH 200.0'

| Footage | | Sample No. | Sample Width | Assays for | Formation and Remarks |
|---------|-------|------------|--------------|------------|---|
| From | To | | | | |
| 0.0 | 2.0 | | | | Casing. |
| 2.0 | 133.5 | | | | <u>Mainly Porphyritized Tuffs</u> Alternating beds of light and dark grey - fine to medium grained - bedding @ 60° - 70° to core axis. Occasional small white quartz injection a few very small pyrite veinlets - some short grey feldspar porphyry sections. 131.5 - 133.5 a few small pyrite and pyrrhotite stringers parallel to bedding. |
| 133.5 | 200.0 | | | | <u>Mica Garnet Schist</u> Fine to medium grained - mainly dark grey - well banded - bedding @ 60° - 80° to core axis 141.0 - 142.2 fine disseminated pyrite also occasional very narrow pyrite stringer some sections flecked with small purple garnets. 200.0 end of hole. |



LG

Diamond Drill Record

PROPERTY Big Duck Lake

COMPANY VALMONT MINING EXPLORATION LTD.

HOLE No. 2

PROJECT No.

SHEET NUMBER 1 of

BEARING S 15°E

STARTED Oct. 8/58

LATITUDE 0 + 05N

DIP at Collar Angle - 60°

COMPLETED Oct. 10/58

DEPARTURE 61 + 50 E

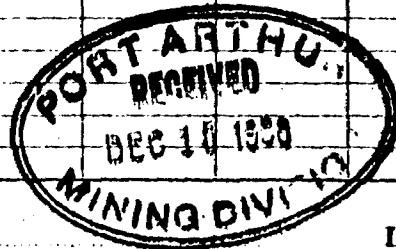
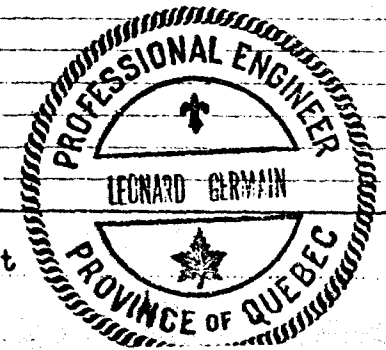
 at
at
at
at

PROPOSED DEPTH

ELEVATION

ULTIMATE DEPTH 205.0'

| Footage | | Sample No. | Sample XXXX | Assays for | | | | | Formation and Remarks |
|---------|-------|--------------------|--|------------|-------|-------|--------|-------|---|
| From | To | | | Au | Ag | Cu | Pb | Zn | |
| 0.0 | 1.0 | | Length Wt. | | | | | | Casing. |
| 1.0 | 129.7 | | | | | | | | Mainly perphyritized tuffs. Light to dark grey - well banded - bedding @ 60° - 70° to core axis. Fine to medium grained - some sections of grey feldspar porphyry. Fine disseminated pyrite in porphyritic sections. 54.6 - 55.2 lost core 59.0 - 60.0 lost core 72.4 - 73.5 lost core 65.2 - 65.7 section 40% pyrrhotite 108.1 - 108.8 lost core |
| 129.7 | 205.0 | | | | | | | | Mica garnet schist. Fine to medium grained, well banded light to dark grey - bedding @ 60° - 70° to core axis. 129.7 - 130.3 narrow pyrite stringers in black tuff. 139.8 - 155.6 many veinlets (up to 1/8" wide) of fine pyrite and pyrrhotite occurring parallel to bedding. Also some fine disseminated pyrite and pyrrhotite. Most sections flecked with small purple garnets. 205.0 end of hole. |
| | | 430 140.0-150.0 | 10.0' 4 ³ / ₈ "# | Point | Point | Point | Traces | Point | |

R.D. 2M 40

Drilled by Boyles Bros.

Logged by James O. Stewart

Diamond Drill Record

COMPANY VALMONT MINING EXPLORATION LTD.

PROPERTY Big Duck Lake

HOLE No. 3

PROJECT No.

SHEET NUMBER 1 of

BEARING S 10°E

STARTED Oct. 11/58

LATITUDE 8 + 10 N

DIP at Collar

Angle - 70°

COMPLETED Oct. 13/58

DEPARTURE 57 + 40 E

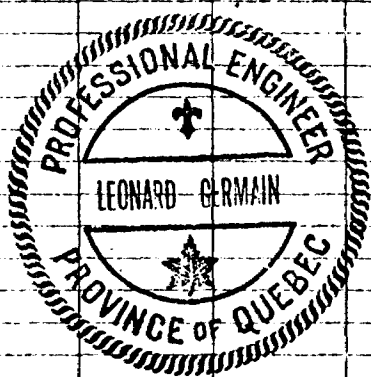
at
at
at
at

PROPOSED DEPTH

ELEVATION

ULTIMATE DEPTH 197.0

| Footage | | Sample No. | Sample XXXX Length Wt | Assays for | | | | | Formation and Remarks |
|---------|-------|------------|-------------------------------------|------------|-------|--------|-------|-------|---|
| From | To | | | Au | Ag | Cu | Pb | Zn | |
| 0.0 | 2.5 | | | | | | | | Casing. |
| 2.5 | 62.5 | | | | | | | | Mica Garnet Schist. Light to dark grey - medium grained bedding @ 40 - 500 to core axis flecked with small purple garnets. |
| | | 440 | 6.5' 2 1/2# | Traces | 0.06% | Traces | Point | 0.25% | 26.6 - 33.0 and 39.7 - 42.0 mainly fine grained black tuff with short sections (up to 0.3 feet wide) of quartz carbonate in stringers and irregular masses. There are graphitic shear planes parallel to bedding at 29.0 and 45.0. The above quartz carbonate contains some disseminated pyrite and pyrrhotite with a few small crystals of sphalerite at 27.4, 29.6, 30.3, 31.6, 39.8, 40.6, 41.3, 42.0. |
| | | 26.5-33.0 | | | | | | | From 52.0 to 62.5 there are very narrow black tuff sections with some pyrite and pyrrhotite - also occasional quartz carbonate injections. A few grains of sphalerite at 52.2 |
| 62.5 | 68.0 | | | | | | | | Gabbro. Medium grained massive - dark grey contacts broken. |
| 68.0 | 187.8 | | | | | | | | Mica Garnet Schist. As above with black fine grained tuff beds as at 71.5, 72.5, 78.7, 79.4, 98.5 - 100.1, 157.7, 158.2, 178.2, 179.2 plus additional short sections. |
| | | 441 | 1.6' 2# | Point | 0.20% | Point | Point | 0.4% | |
| | | 98.5-100.1 | | | 8cts. | | | | Within the above tuff are quartz carbonate injections and inclusions containing disseminated and stringers of pyrite and pyrrhotite with crystals of sphalerite at 72.0, 74.3, 79.0, 98.8, 99.1. A few chalcopyrite crystals at 72.0 |



JS

Diamond Drill Record

PROPERTY Big Duck Lake

COMPANY VALMONT MINING EXPLORATION LTD.

HOLE No. 4

PROJECT No.

SHEET NUMBER 1 of

BEARING S 20° E

STARTED Oct. 14/58

LATITUDE 6 + 00N

DIP at Collar

Angle - 70°

COMPLETED Oct. 17/58

DEPARTURE L - 48 E

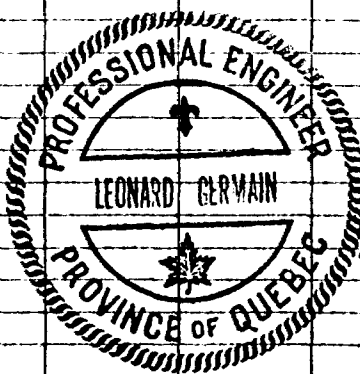
at
at
at
at

PROPOSED DEPTH

ELEVATION

ULTIMATE DEPTH 202.0

| Footage | | Sample No. | Sample Width Length | Wt. | Assays for | | | | | Formation and Remarks |
|---------|-------|-------------|---------------------------|--------|------------|-------|--------|--------|-------|--|
| From | To | | | | Au | Ag | Cu | Pb | Zn | |
| 0.0 | 1.5 | | | | | | | | | Casing. |
| 1.5 | 39.0 | | | | | | | | | Hornblende Schist. Dark greenish grey - medium grained bedding or schistosity @ 45° - 55° to core axis alternating bands of light greenish grey and dark greenish grey in some sections - occasional oxidized zone to 26.6 some garnetiferous sections. |
| 39.0 | 161.3 | 431 | sludge | loz. | Point | Point | Traces | Traces | 0.20% | Mica Garnet Schist. Fine to medium grey, light to dark grey, well banded, bedding @ 45° - 55° to core axis. Some sections flecked with small purple garnets. Some pyrite and pyrrhotite as disseminated crystals and as stringers along bedding planes. |
| | | 432 | 5.0' | 1 1/2" | Point | Point | Traces | Point | 0.20% | 56.9 - 57.7 lost core |
| | | 97.5-102.5 | | | | | | | | 59.3 - 60.0 " " |
| | | 433 | 1.0' | 1" | Point | Point | Traces | Point | 0.20% | 68.1 - 69.3 " " |
| | | 114.0-115.0 | | | | | | | | From 73.3 - 161.3 there are beds of fine grained black tuff varying in width from 0.3 feet to 4.0 feet alternating with the grey mica schist. |
| | | | | | | | | | | The beds of black tuff are mineralized with fine pyrite and pyrrhotite as narrow veinlets and as disseminated crystals. Within the tuffs are injections or inclusions of quartz carbonate generally parallel to bedding planes. There are usually a few small crystals of sphalerite and very few crystals of chalcop- |



R.D. 2M 21040

Drilled by Boyles Bros.

Logged by James O. Stewart

Diamond Drill Record

PROPERTY Big Duck Lake

COMPANY VALMONT MINING EXPLORATION LTD.

HOLE No. 4

PROJECT No.

SHEET NUMBER 2 of

BEARING S 20° E

STARTED Oct. 14/58

LATITUDE 6 + 00N

DIP at Collar

Angle - 70°

COMPLETED Oct. 17/58

DEPARTURE L - 48 E

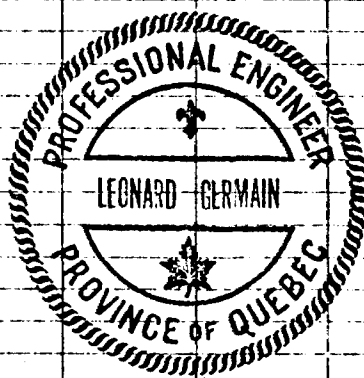
 at
at
at
at

PROPOSED DEPTH

ELEVATION

ULTIMATE DEPTH 202.0

| Footage | | Sample No. | Sample Length | Wt | Assays for | | | | | Formation and Remarks |
|---------|-------|-------------|---------------|--------|------------|-------|--------|-------|-------|--|
| From | To | | | | Au | Ag | Cu | Pb | Zn | |
| | | | | | | | | | | Tuff sections as from |
| | | | | | | | | | | 73.2 - 76.2 118.0 - 119.0 |
| | | | | | | | | | | 80.3 - 80.8 123.9 - 124.2 |
| | | | | | | | | | | 84.0 - 84.6 137.6 - 139.0 |
| | | | | | | | | | | 97.5 - 102.5 141.5 - 144.0 |
| | | | | | | | | | | 106.2 - 107.5 |
| | | | | | | | | | | 109.3 - 110.2 plus some very narrow sections |
| | | | | | | | | | | 111.7 - 113.1 |
| | | | | | | | | | | 114.0 - 115.2 |
| | | | | | | | | | | 115.8 - 116.8 |
| | | | | | | | | | | Quartz carbonate sections with sphalerite as at |
| | | | | | | | | | | 99.0, 100.4, 102.0, 107.0. Specks of chalcop- |
| | | | | | | | | | | pyrite at 110.1 and 114.5. Chalcopyrite and |
| | | | | | | | | | | sphalerite at 143.4 and 147.5. |
| | | | | | | | | | | There are graphite shears parallel to bedding |
| | | | | | | | | | | planes at: 73.5, 74.8, 76.0, 76.7, 97.0, 100.0, |
| | | | | | | | | | | 102.0, 105.0, 110.1, 110.7, 110.9, 111.2, 112.0, |
| | | | | | | | | | | 115.0, 116.5, 143.0, 143.8, 148.1. |
| | | | | | | | | | | 128.0 - 128.9 lost core |
| | | | | | | | | | | 148.5 - 151.9 lost core |
| 161.3 | 167.7 | | | | | | | | | Gabbro. Dark grey, medium grained, massive, contacts @ 70° to core axis. |
| 167.7 | 202.0 | 434 | 3.7' | 1 1/2# | Point | Point | Traces | Point | 0.12% | Mainly Black Tuff. Except from 167.7 - 176.4 and 200.0 - 202.0 which are sections of mica garnet schist with minor disseminated pyrite and pyrrhotite. |
| | | 176.3-180.0 | | | | | | | | |
| | | 435 | 2.6' | 1# | Point | Point | Traces | Point | 0.12% | |
| | | 181.3-183.9 | | | | | | | | |
| | | 436 | 5.0' | 2 1/2# | point | Point | Traces | Point | 0.20% | |
| | | 195.0-200.0 | | | | | | | | |



Diamond Drill Record

PROPERTY Big Duck Lake

COMPANY VALMONT MINING EXPLORATION LTD.

HOLE No. 4

PROJECT No.

SHEET NUMBER 3 of

BEARING S 20° E

STARTED Oct. 14/58

LATITUDE 6 + 00N

DIP at Collar

Angle - 70°

COMPLETED Oct. 17/58

DEPARTURE L - 48 E

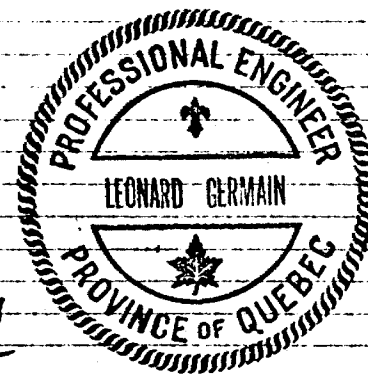
at
at
at
at

PROPOSED DEPTH

ELEVATION

ULTIMATE DEPTH 202.0

| Footage | | Sample No. | Sample Width | Assays for | | | Formation and Remarks |
|---------|----|------------|--------------|------------|--|--|--|
| From | To | | | | | | |
| | | | | | | | The tuff has injections and inclusions of quartz carbonate with disseminated and lenses of pyrite and pyrrhotite parallel to bedding planes. |
| | | | | | | | There are several graphite shears as at 176.7, 178.3, 179.2, 183.2 and 195.3 |
| | | | | | | | 174.2 - 174.8 test core |
| | | | | | | | 180.3 - 181.3 " " |
| | | | | | | | 184.0 - 184.8 " " |
| | | | | | | | 186.6 - 187.6 " " |
| | | | | | | | 188.4 - 190.0 " " |
| | | | | | | | 190.5 - 191.2 " " |
| | | | | | | | 192.0 - 195.0 " " |
| | | | | | | | 202.0 end of hole. |



R.D. 2M-21040

Drilled by Boyles Bros.

Logged by James O. Stewart

Diamond Drill Record

PROPERTY Big Duck Lake

COMPANY VALMONT MINING EXPLORATION LTD.

HOLE No. 5

PROJECT No.

SHEET NUMBER 1 of

BEARING S 10° E

STARTED Oct. 17/58

LATITUDE 4 + 90N

DIP at Collar

Angle - 45°

COMPLETED Oct. 20/58

DEPARTURE L - 44 E

at
at
at
at

PROPOSED DEPTH

ELEVATION

ULTIMATE DEPTH 197.0

| Footage | | Sample No. | Sample Length | Sample Wt. | Assays for | | | | | Formation and Remarks | |
|---------|-------|------------|---------------|------------|------------|--------|-------|--------|-------|--|---|
| From | To | | | | Au | Ag | Cu | Pb | Zn | | |
| 0.0 | 1.5 | | | | | | | | | Casing. | |
| 1.5 | 10.5 | | | | | | | | | Hornblende Schist. Medium to dark green, medium grained, bedding @ 70° to core axis graphite shear from 7.5 - 8.1 some fine disseminated pyrite & pyrrhotite. | |
| 10.5 | 197.0 | | | | | | | | | Mica Garnet Schist. Light to dark grey bands - fine to medium grained, bedding @ 65° - 70° to core axis. Flecked throughout with small purple garnets - some very fine disseminated pyrite and pyrrhotite - with occasional stringer of pyrite parallel to bedding planes. | |
| | | 108.37 | 111.0 | 1' | 1# | Point | Point | Traces | Point | 0.40% | |
| | | 134.4 | 136.2 | 1.8' | 2# | Point | Point | Point | Point | 0.67% | |
| | | 145.0 | 147.0 | 2.0' | 2# | Traces | 0.01% | Point | Point | 0.40% | |
| | | | | | | | | | | | 31.0 - 31.2 black tuff bed with disseminated pyrite and a few small crystals of sphalerite and chalcopyrite. Graphite at 31.2. Small crystal of sphalerite in quartz carbonate at 41.4. Graphite shear at 50.0. A few very short sections of lost core. |
| | | | | | | | | | | | 80.7 - 81.1 black tuff with some graphite and a few crystals of sphalerite with pyrite and pyrrhotite. Graphite shears at 81.2 and 82.5. |
| | | | | | | | | | | | 108.9 - 111.0 black tuff with considerable graphite - some quartz carbonate containing a few crystals of sphalerite with stringers and crystals of pyrite and pyrrhotite. |
| | | | | | | | | | | | 116.1 - 116.8 lost core |
| | | | | | | | | | | | 119.5 - 120.0 lost core |
| | | | | | | | | | | | 147.1 - 147.7 lost core |

