



42E16W0147 15 ASHMORE

010

Diamond Drilling

Township of Ashmore

Report No: 15

Work performed by: Mrs. H. M. Holm

Claim No	Hole No	Footage	Date	Note
TB 103702	1	134'	June/66	(1)
TB 132424	1	160'	June/70	(1)(2)
TB 117821	1	160'	Aug/72	(1)(3)

Notes: (...) date placed on file
 (1) (May/74)
 (2) 121/70
 (3) 178/72

Highway Number 11

-----to Longlac ----->

***Diamond Drill Hole Number 1

is located 300 feet north of Post No. 2,

Mining Claim T.B. 103702, and about 35 feet

west of the claim line. Area well marked.

*** Total footage of d.d. hole (1966 & 1967)-134 feet.

***Test Pit No. 1 is located 150 feet south-

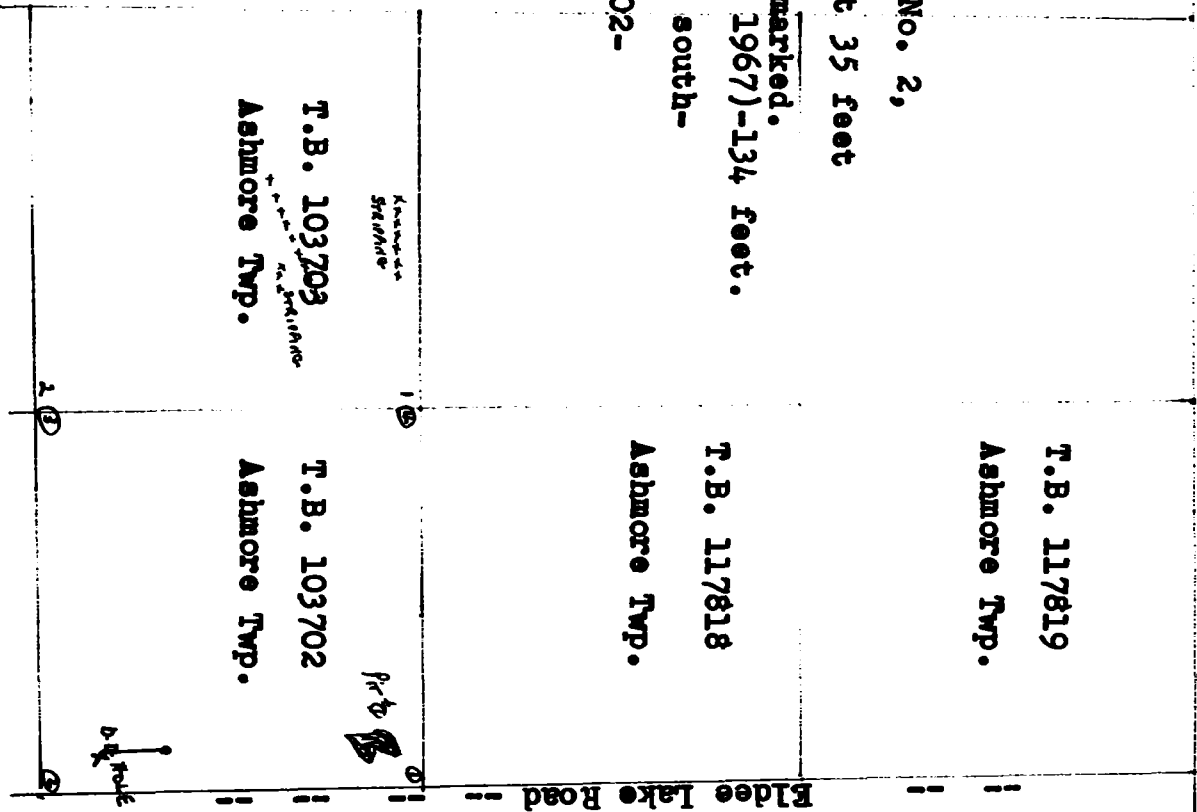
west of Post No. 1, Claim No. 103702-

space clearly cut and marked out.

***Pit approx. 27 feet wide

Approx. 6 feet to 10 feet wide

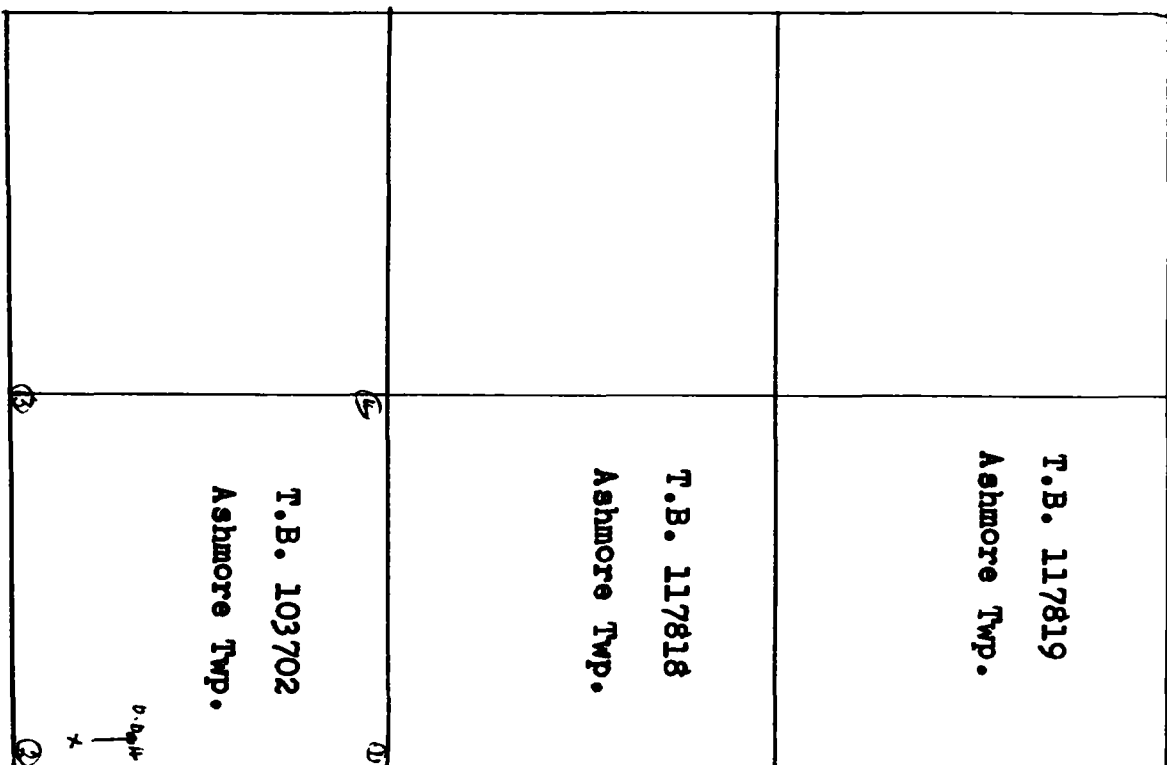
Depth varying 4 feet to 5 feet



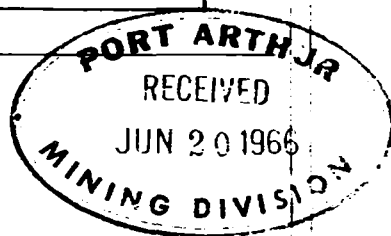
North

Diamond Drill Hole Number 1
is located 300 feet north of
Post Number 2, Mining Claim
T.B. 103702, and about 35 feet
west of the claim line. Area
well marked.

Highway No. 11 - - - - -



Ridee Lake Road - - - - -



DIAMOND DRILL RECORD

Hole No. (1) Sheet No. (1)

Property: **Mining Claims T.B. 103702 and T.B. 103703**
 Location: **Ashmore Township, District of Thunder Bay**

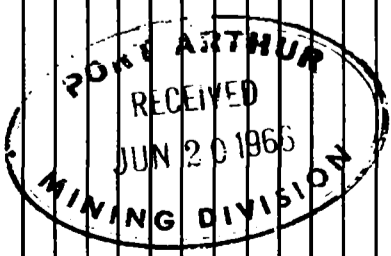
Dip **4.5 degrees**

Latitude:
 Departure:
 Bearing:

Elev. Collar
 Datum:
 Date Started: **June 2nd., 1966**
 Date Completed: **June 16th., 1966**
 Drilled by: **John Wodlan**
 Logged by: **John Wodlan and Hilda M. Holm**

Total Footage: **102 feet (continuing later, when replacement parts received from Toronto, have a broken clutch)**

Footage		Formation	Sample Number	Sample Footage	Sample Width	Gold Sample	Gold Sludge	Remarks
From	To							
1 ft.	5 ft.	Diorite lightly mineralized with pyrites						
5 ft.	10 ft.	Diorite, some feldspar sections and narrow quartz stringers, medium mineralized with chalc-sulphides and pyrites						
10 ft.	15 ft.	Greywacke and wider quartz stringers-pyrites						
15 ft.	25 ft.	Greywacke with quartz in more abundance - no mineralization						
25 ft.	32 ft.	Diorite and quartz stringers, with some pyrites and sulphides						
32 ft.	40 ft.	Greywacke and quartz, lightly mineralized with pyrites						
40 ft.	50 ft.	Fine grained diorite with narrow quartz stringers lightly mineralized with sulphides						
50 ft.	63 ft.	Greywacke and a good deal of a quartz type rock finely disseminated with sulphides and pyrites						
63 ft.	75 ft.	Fine grained greywacke with narrow quartz stringers with fine chalcopyrite, sulphide and pyrite mineralization.						
75 ft.	80 ft.	a greenish type rock (greenstone)? with quartz containing sections of finely grained chalc-sulphides and pyrites.						
80 ft.	93 ft.	Greywacke and a bluish type quartz						
93 ft.	102 ft.	Diorite with sections of quartz stringers finely mineralized all through with pyrites, some chalcopyrites and sulphides.						
This hole will be continued deeper as soon as replacement parts to drill arrive from Toronto.								



Date of Examination: **June 16th., 1966.**

John Wodlan
John Wodlan
Hilda M. Holm
Hilda M. Holm

DIAMOND DRILL RECORD

Hole No. (1.) Sheet No. (2.)

Property Mining Claims T.B. 103702 and T.B. 103703 Dip 4.5 degrees

Location Ashmore Township, District of Thunder Bay

Latitude
Departure
Bearing

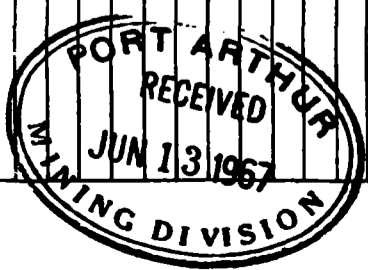
Now reporting an additional footage of 32 feet
Total footage of Hole #1-134 feet

Elev. Collar
Datum June 29th., 1966
Date Started recommenced after replacement parts (installed).
Date Completed July 1st., 1966.
Drilled by John Wodlan
Logged by John Wodlan and H. M. Holm

Footage		Formation	Sample Number	Sample Footage	Sample Width	Gold Sample	Gold Sludge	Remarks
From	To							
102'	106'	Diorite with sections of quartz stringers, pyrites some chalcopyrite						
106'	116'	Diorite - not as many quartz stringers-pyrites						
116'	128'	Greywacke coming in, - some rhyolite - very difficult to drill rock breaking continuously						
128'	131'	Lost core -						
131'	134'	Rhyolite - dacite formation - stringers - drill jamming - hole had to be abandoned						
*The first 102' of this d.d. hole reported June 16th., 1965 -								

Handwritten: All lost core
~~102' to 134'~~

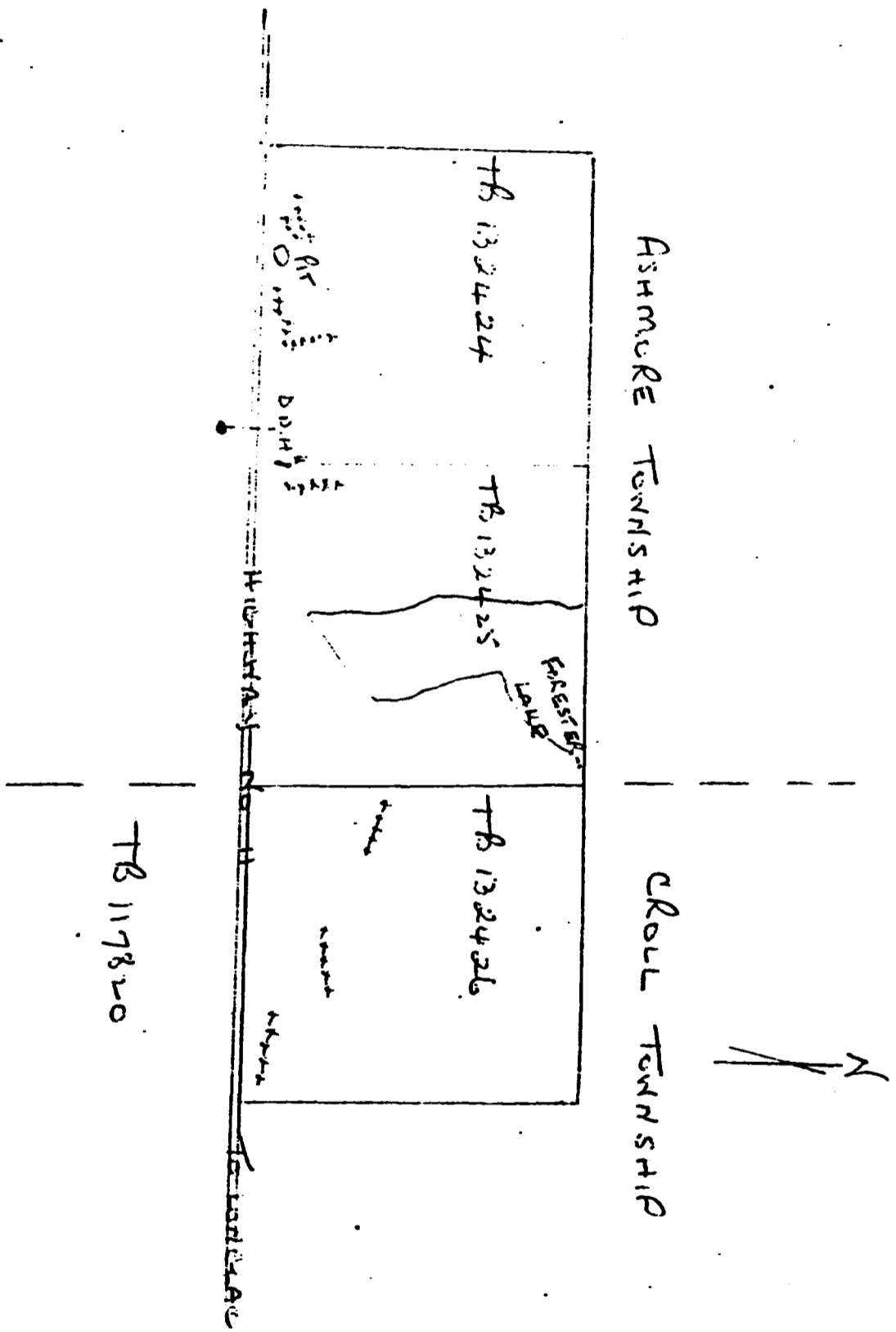
Handwritten: 12 1/2
10 1/2



Date of Examination July 3rd., 1966.

Signature: John Wodlan
JOHN WODLAN

Signature: H. M. Holm
H. M. HOLM



#121/70 Ashmore Sup & Croft Sup

per H. M. Hobbs

DIAMOND DRILL RECORD

Hole No. 1 Sheet No. 1

Property Mrs. Hilda M. Holm
 Location Ashmore Township, District of Thunder Bay

Dip 50°
 South to North

Latitude
 Departure
 Bearing

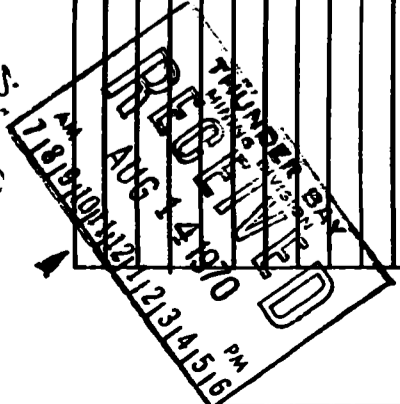
and located 210' west of
 No. 2 post T.B. 132424 and
 20 feet north of East-West Claim line
 Total Footage 160 feet by Boyles Kray

Elev. Collar
 Datum
 Date Started June 16th, 1970
 Date Completed July 3rd, 1970
 Drilled by John Wodlan, Geraldton, Ontario
 Inspected by John Wodlan and H. M. Holm,
 Geraldton, Ontario.

Footage		Formation	Sample Number	Sample Footage	Sample Width	Gold Sample	Gold Sludge	Remarks
From	To							
1'	25'	Rhyolite - no mineralization						
26'	40'	Rhyolite with stringers of gabbro - sparse mineralization with sulphides and pyrites					****	Core 15/16 Inch.
40'	50'	gabbro-mineralization sulphides, calco & pyrites						Boyles Kray Diamond Drill
50'	51'	lost core						
51'	75'	good grade of mineralization, sulphides and calco						
75'	81'	gabbro - sulphides and some (zinc)? sent for assay						
81'	84'	good mineralization as above (gabbro, with copper, zinc?)						
84'	90'	gabbro, calco and pyrite mineralization						
90'	100'	gabbro with calco and pyrites						
100'	101'6"	lost core						
100'6"	112'	rock change to rhyolite, sparse mineralization with sulphides and pyrites						
112'	115'	rhyolite with cubed pyrites						
115'	119'	rhyolite with sparse mineralization of sulphides						
119'	125'	gabbro - no visible mineralization						
125'	127'	rhyolite-gabbro-greenstone streaks						
127'	136'	rhyolite, some gabbro streaks mineralized with pyrites and calco.						
136'	137'6"	lost core						
137'6"	150'	rhyolite and greenstone mineralization pyrites, calco						
150'	155'	rhyolite well mineralized with calco and (zinc)?						
155'	160'	gabbro, well mineralized with calco and (zinc)?						
		160' - end of hole						
Core stored in warehouse located at 115 Hogarth Avenue, GERALDTON, Ontario.								

Date of Examination

John Wodlan et al
McArthur



ASTORE TOWNSHIP

CROLL TOWNSHIP

North

T.B. 132424

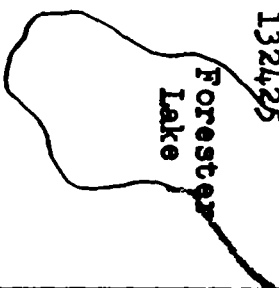
T.B. 132425

T.B. 132426

T.B. 117821

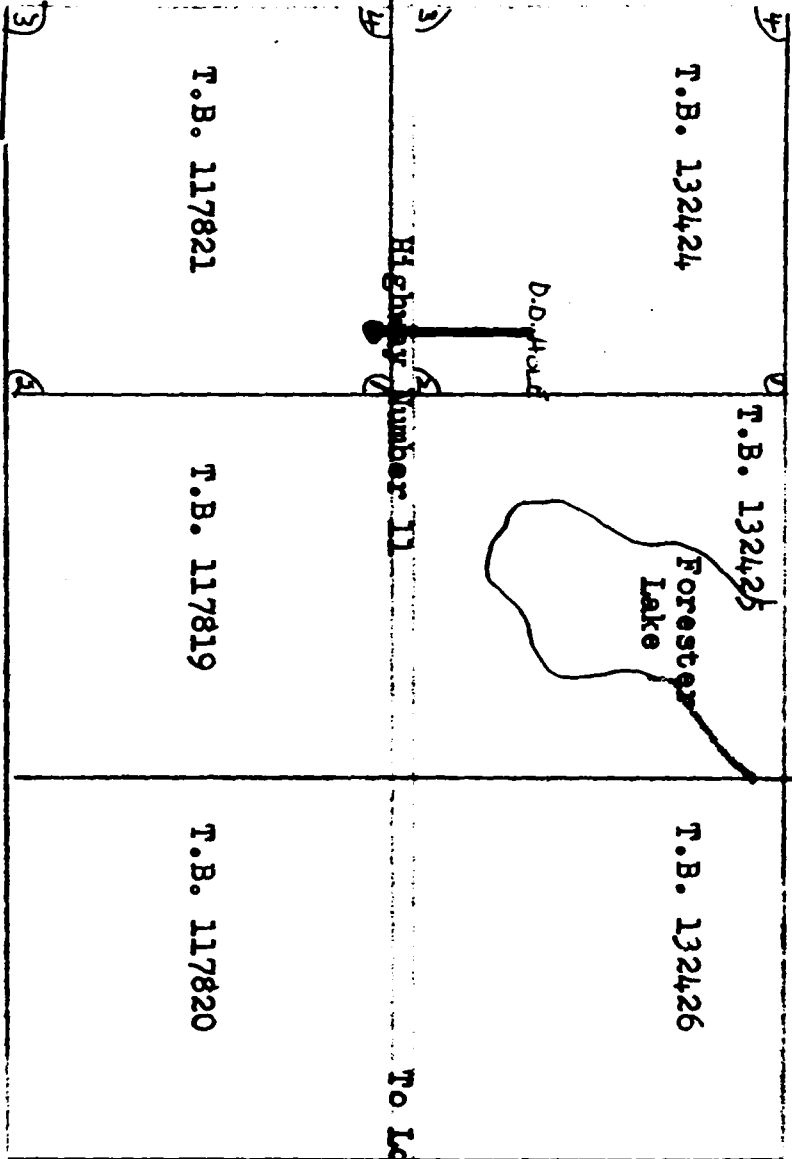
T.B. 117819

T.B. 117820



D.D. ROAD

Highway Number 11 To Langlac



Start a new page for every new hole, but fill in top portion of form only on first page for each hole.

DRILLING COMPANY ANY	DRILL LOG # 2015-0000	BOYLS & KRAY 15/16"	COLLAR ELEVATION	BEARING OF HOLE FROM REFERENCE POINT	TOTAL FOOTAGE	DIP OF HOLE AT	LOCATION OF HOLE IN RELATION TO A FIXED POINT ON THE CLAIM	MAP REFERENCE NO.	CLAIM NO.
DATE HOLE STARTED August 8/72	DATE COMPLETED August 20/72	DATE LOGGED Aug. 21/72	DATE SUBMITTED Aug. 21/72	LOGGED BY H.K. Holm & J. Wodlan	160'	60 degrees	South-west 45° - 450' from No. 2 Post on Claim T.B. 132424	PROPERTY NAME Ashmore Township Hole on 117821	T.B. 117821
EXPLORATION CO., OWNER OR OPTIONEE Mrs. H. M. Holm -Geraldton, Ontario									

FOOTAGE FROM TO	ROCK TYPE	DESCRIPTION	PLANAR FEATURE ANGLE	CORE SPECIMEN FOOTAGE +	YOUR SAMPLE NUMBER	SAMPLE FOOTAGE FROM TO	SAMPLE LENGTH	ASSAYS +	
1' 35'	quartzite and gabbro?	quartzite and gabbro? - sparse banded mineralization with sulphides and oligoclite visible in some sections							
36' 45'	quartzite?	quartzite? and some greenstone - scattered sulphide mineralization throughout							
46' 50'	banded formation	banded formation of quartzite with quartz stringers - copper sulphide mineralization							
51' 65'	gabbro	gabbro with good copper mineralization and some chlorite							
66' 75'	greenstone	greenstone - with some sulphide net. rhab							
75' 100'	rhylolite	rhylolite - with sparsely mineralized areas of pyrites							
101' 128'	rhylolite	rhylolite and quartzite with bands (narrow of quartz) some mineralization of sulphides							
129' 145'	gabbro	gabbro with mineralization of sulphides - some oligoclites							
145' 160'	quartzite	quartzite - narrow stringers of sulphide mineralization							
-end of hole- 160 feet									
All core is stored at the warehouse and locked up address 109 Hogarth Avenue, Geraldton, Ontario.									

* For features such as foliation, bedding, schistosity, measured from the long axis of the core.

+ Additional credit available. See Assessment Work Regulations.

[Handwritten signatures and notes]

178/32 - ...